



**COMPLETION
& PRODUCTION
SERVICES CO.**

**COMPENSATED
DENSITY / NEUTRON
LOG**

Company L.D. DRILLING, INC.
Well LOCKWOOD #1-35
Field WILDCAT
County GOVE State KANSAS

Company L.D. DRILLING, INC.
Well LOCKWOOD #1-35
Field WILDCAT
County GOVE
State KANSAS

Location: API #: 15-063-22073
352' FSL & 1806 FWL
NE - SW - SE - SW
SEC 35 TWP 11S RGE 31W
Permanent Datum GROUND LEVEL Elevation 2933
Log Measured From KELLY BUSHING 5' A.G.L.
Drilling Measured From KELLY BUSHING
Other Services
DIL
MICRO
Elevation
K.B. 2938
D.F. 2936
G.L. 2933

Date	1/10/13		
Run Number	ONE		
Depth Driller	4609		
Depth Logger	4611		
Bottom Logged Interval	4587		
Top Log Interval	3500		
Casing Driller	342		
Casing Logger	242		
Bit Size	7.875		
Type Fluid in Hole	CHEMICAL MUD	CHLORIDES 3500 PPM	
Density / Viscosity	9.6 / 54		
pH / Fluid Loss	9.0 / 9.6		
Source of Sample	FLOWLINE		
Rim @ Meas. Temp	1.40 @ 60F		
Rmf @ Meas. Temp	1.05 @ 60F		
Rmc @ Meas. Temp	1.68 @ 60F		
Source of Rmf / Rmc	MEASURED		
Rim @ BHT	0.69 @ 121F		
Time Circulation Stopped	2 HOURS		
Time Logger on Bottom			
Maximum Recorded Temperature	121F		
Equipment Number	860		
Location	HAYS, KS.		
Recorded By	IAN MABB		
Witnessed By	KIM SHOEMAKER		

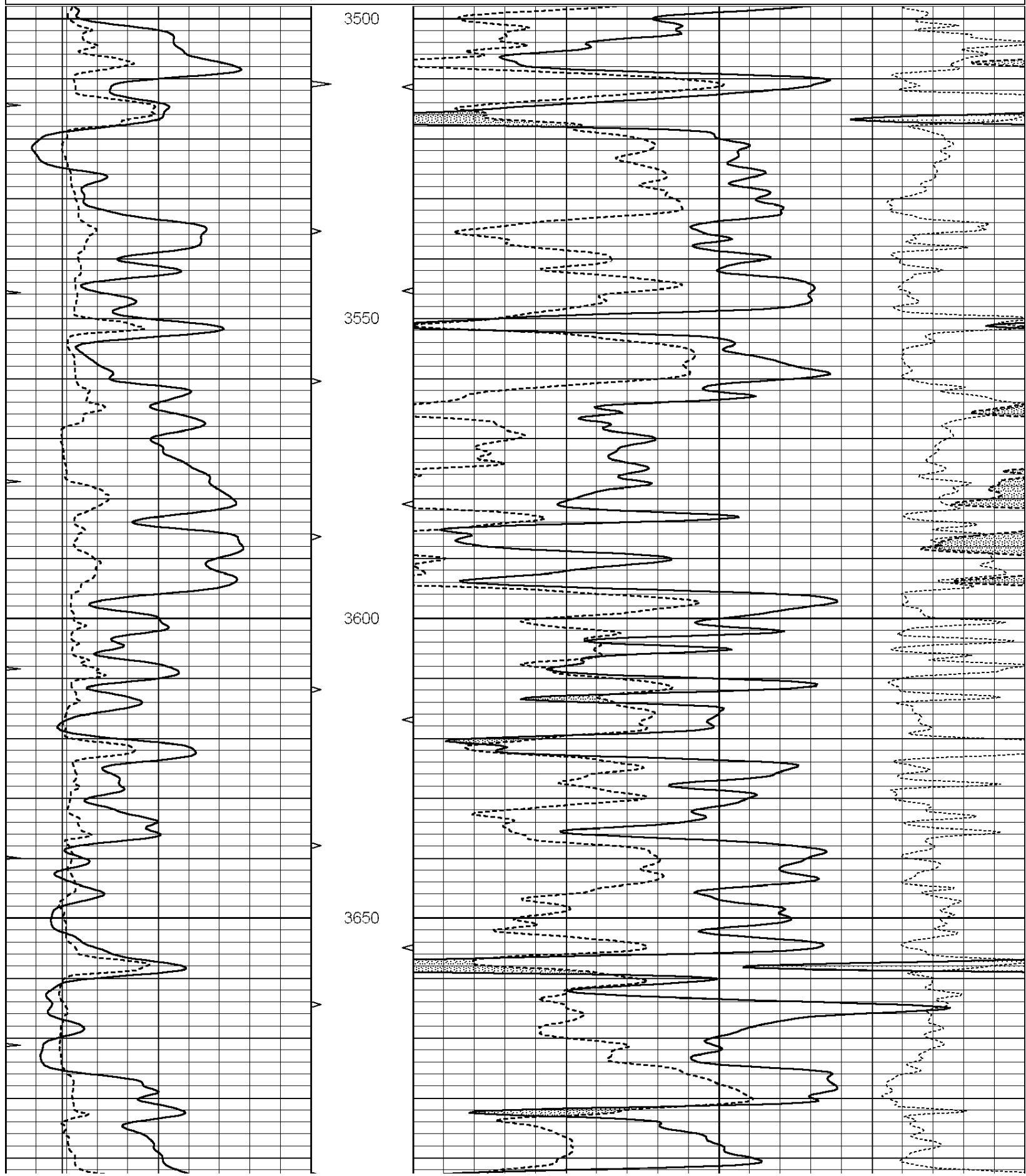
<<< Fold Here >>>

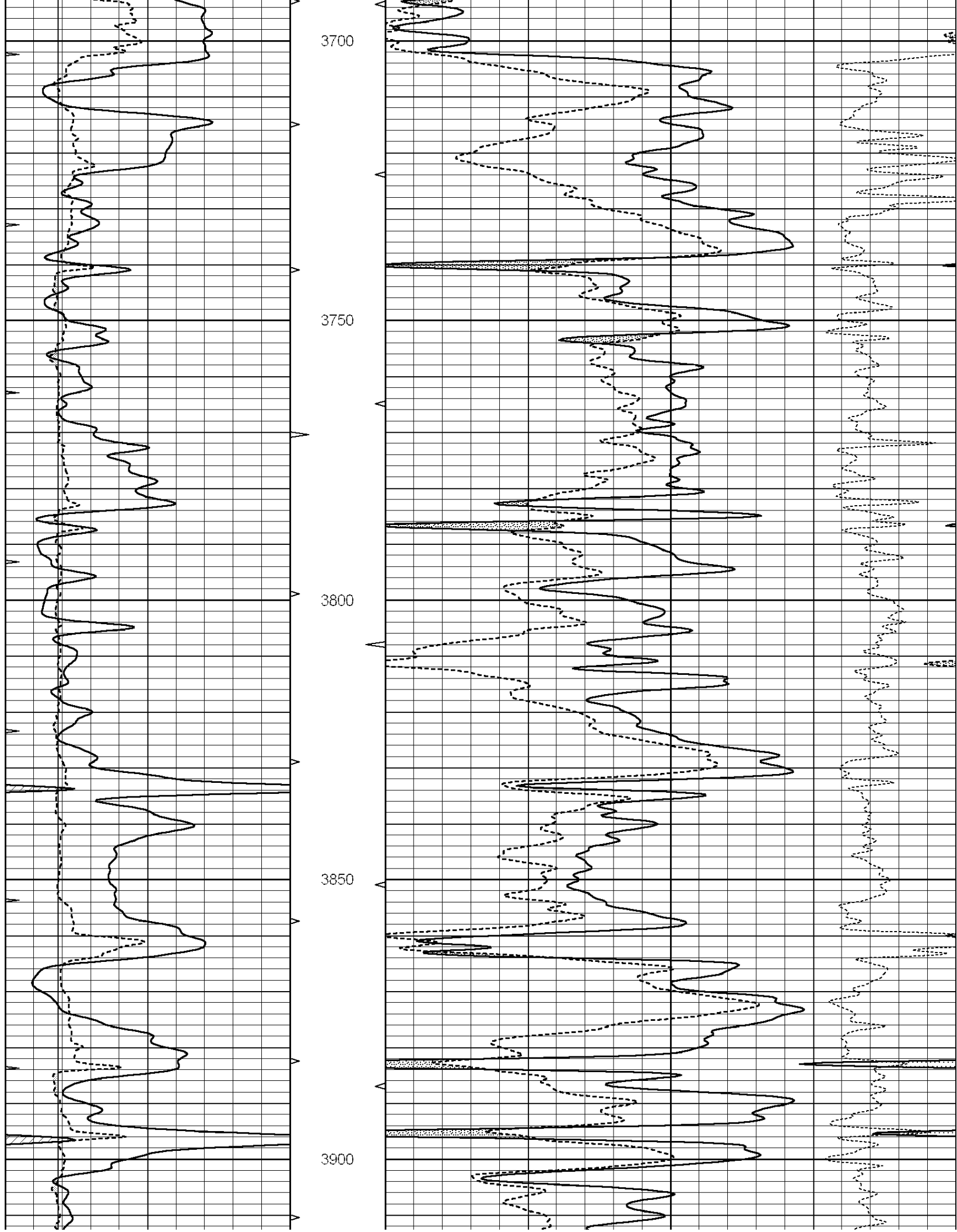
All interpretations are opinions based on inferences from electrical or other measurements and we cannot and do not guarantee the accuracy or correctness of any interpretation, and we shall not, except in the case of gross or willful negligence on our part, be liable or responsible for any loss, costs, damages, or expenses incurred or sustained by anyone resulting from any interpretation made by any of our officers, agents or employees. These interpretations are also subject to our general terms and conditions set out in our current Price Schedule.

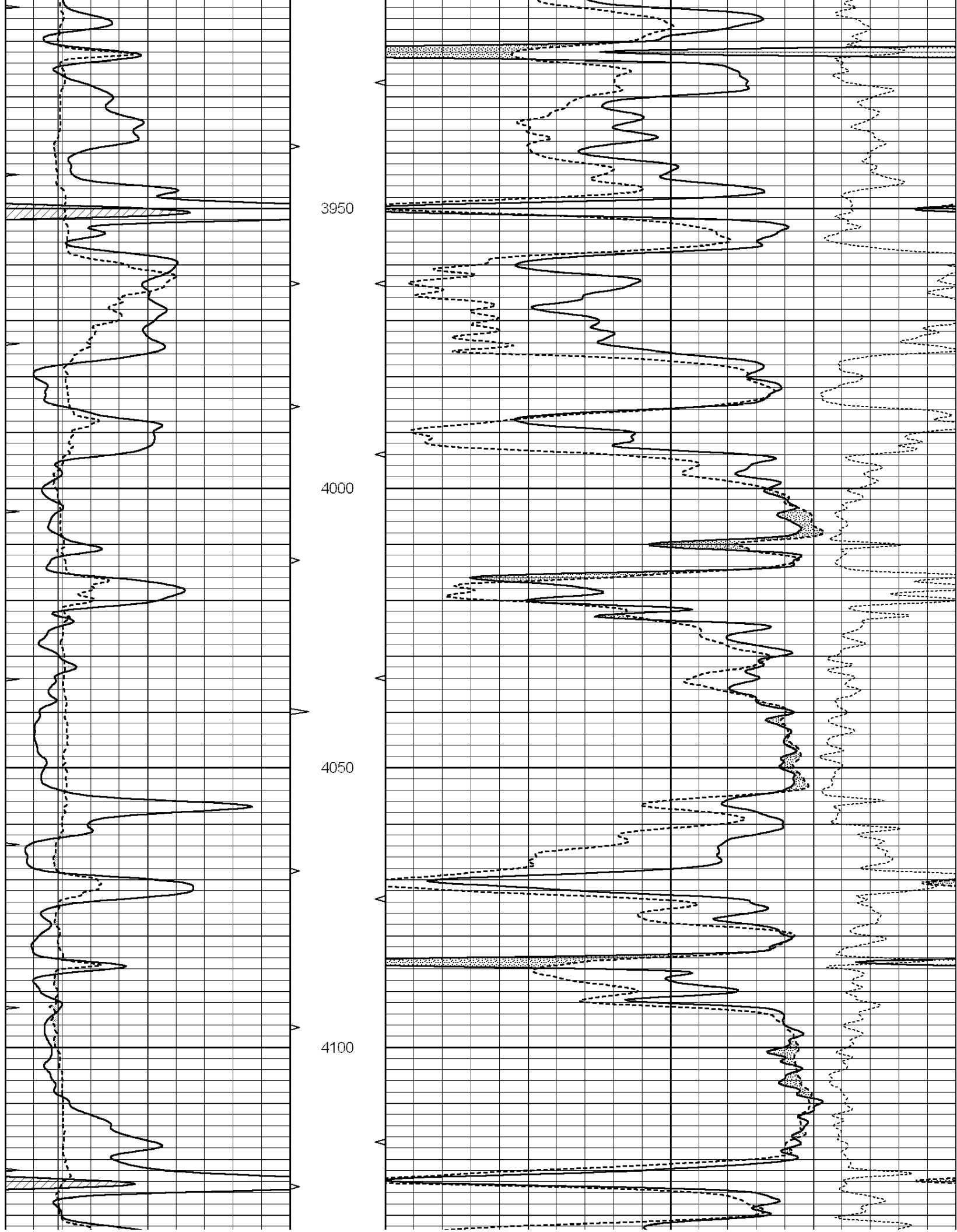
Comments

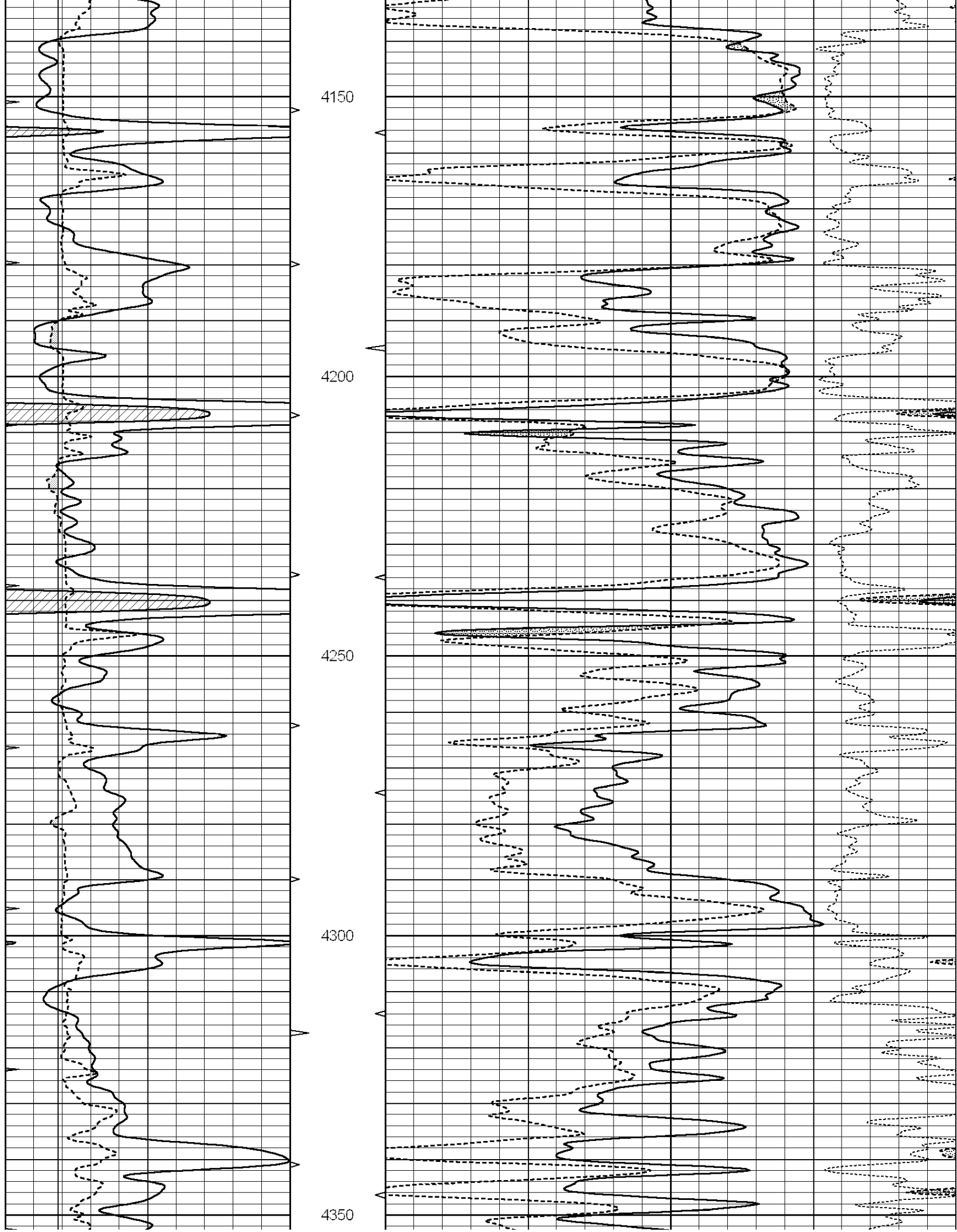
NABORS COMPLETION & PRODUCTION CO.
785-628-6395
THANK YOU FOR YOUR BUSINESS
DIRECTIONS: I-70 & CAMPAS RD.- SOUTH 5 MILES - E 1/2 NORTH INTO

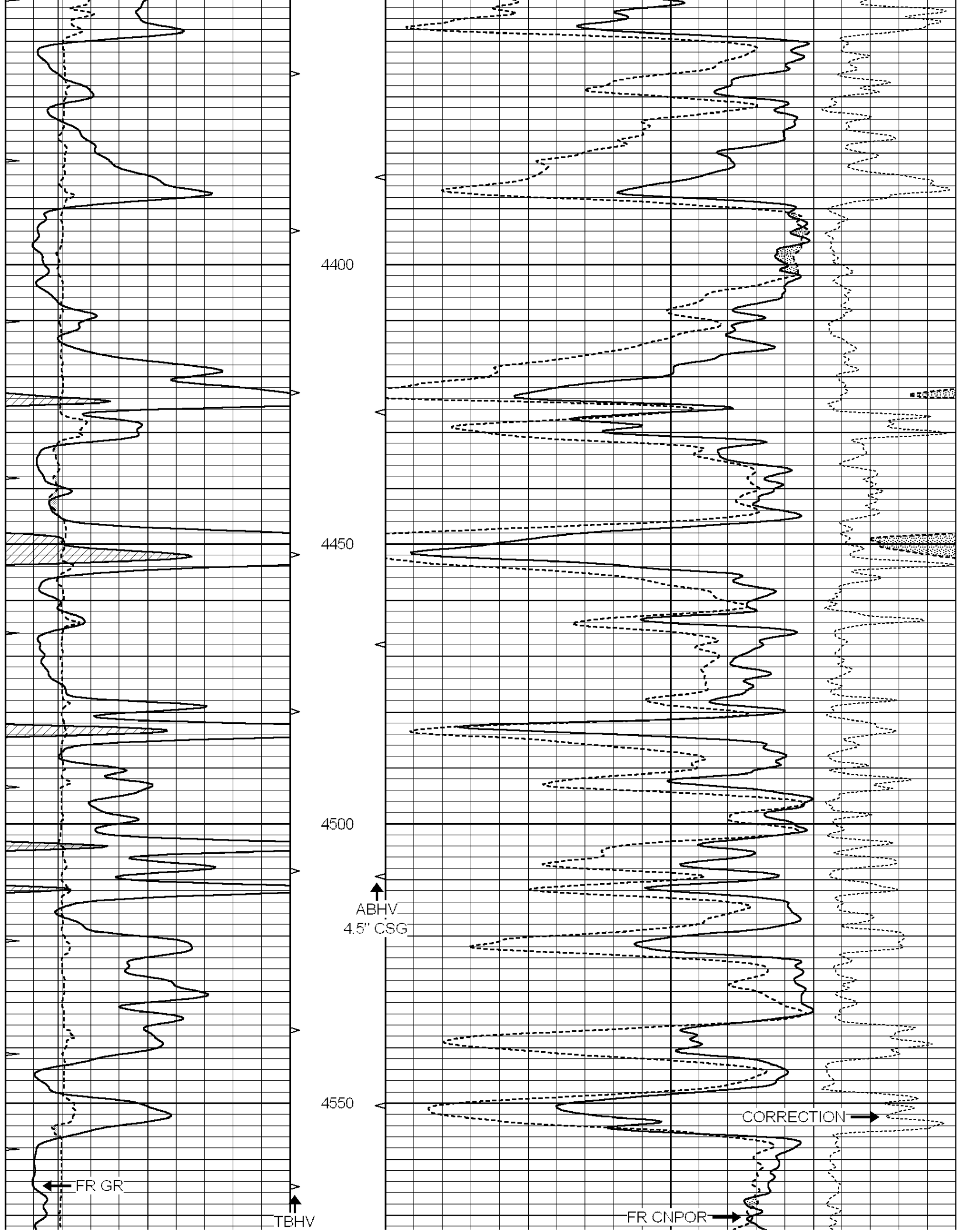
0	GAMMA RAY (GAPI)	150	ABHV	30	COMPENSATED DENSITY (pu)	-10
6	CALIPER (in)	16	10 (ft3)	0 30	COMPENSATED NEUTRON (pu)	-10
0	MINMK	20	TBHV		-0.25 CORRECTION (g/cc)	0.25
			0 (ft3)	10		











4400

4450

4500

4550

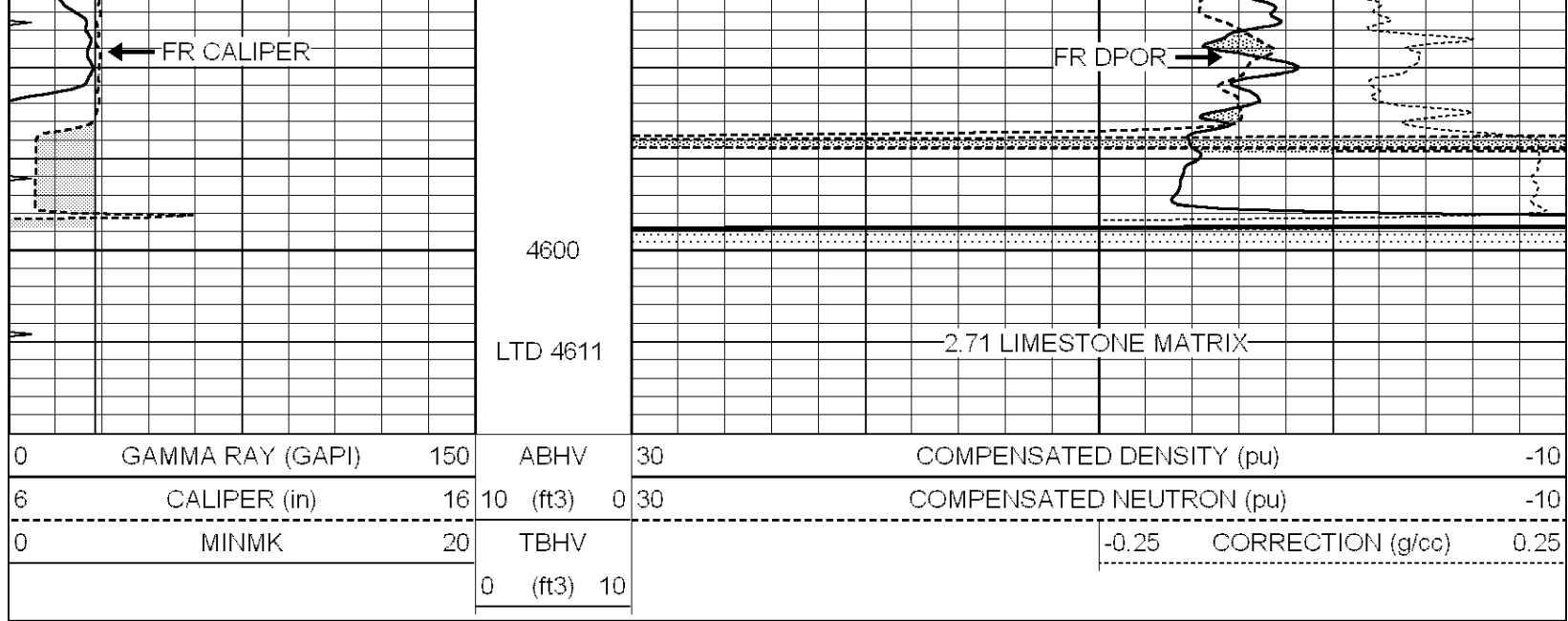
ABHV
4.5" CSG

CORRECTION

FR GR

TBHV

FR CNPOR

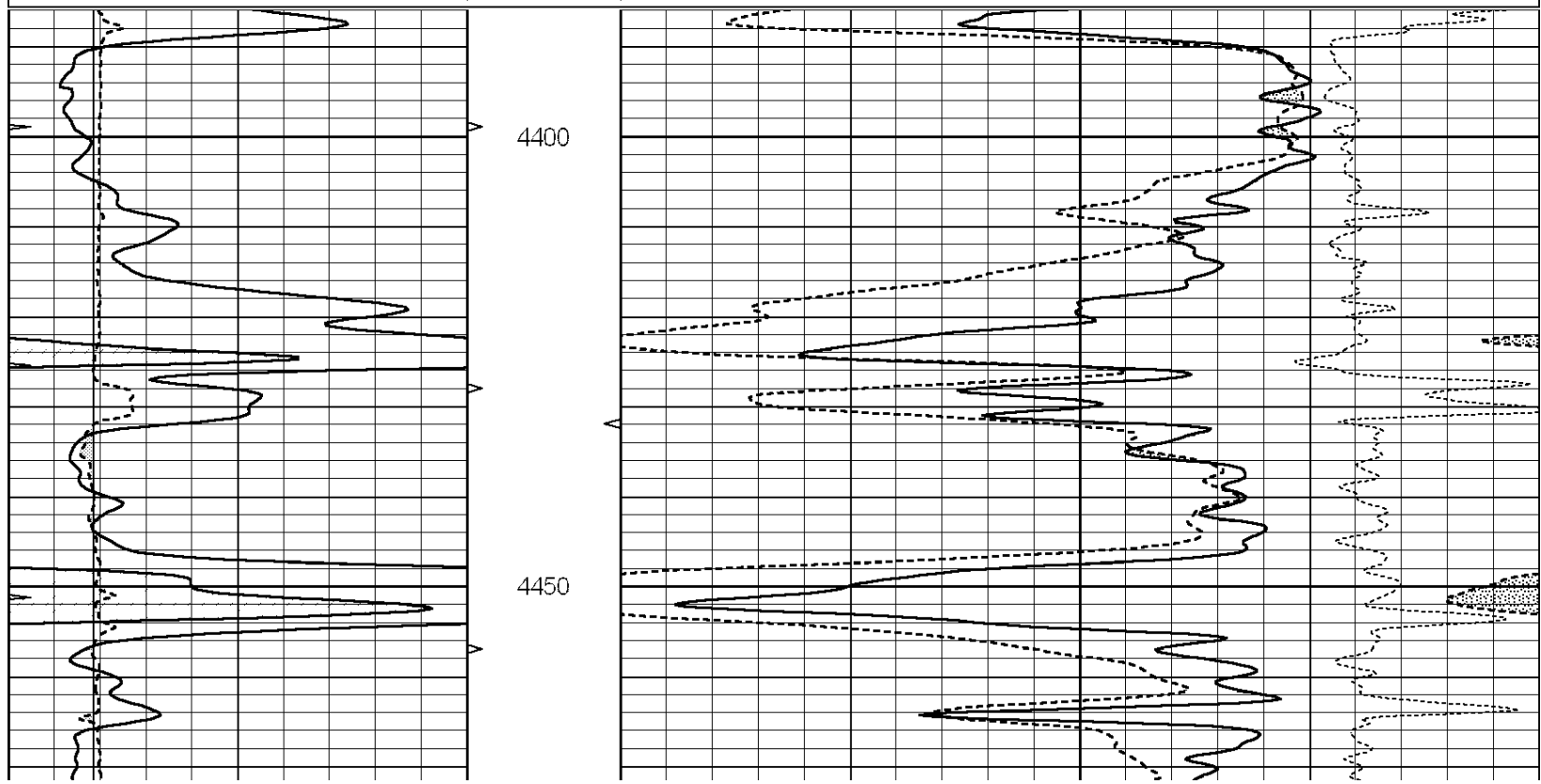


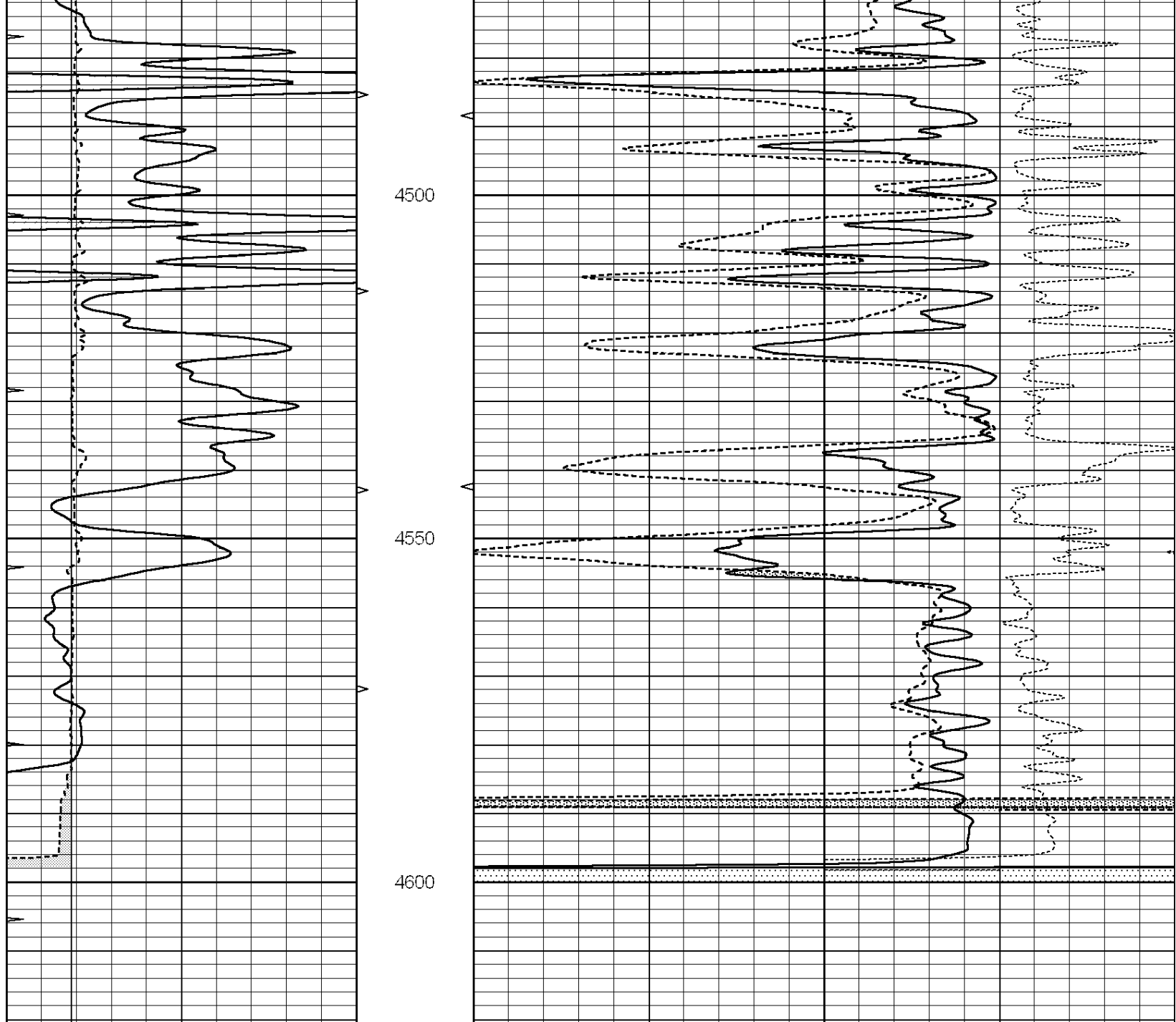

COMPLETION & PRODUCTION SERVICES CO.

REPEAT SECTION

Database File: 010174ddn.db
 Dataset Pathname: pass7
 Presentation Format: den_neu
 Dataset Creation: Thu Jan 10 02:55:31 2013 by Log Open-Cased 090629
 Charted by: Depth in Feet scaled 1:240

0	GAMMA RAY (GAPI)	150	ABHV	30	COMPENSATED DENSITY (pu)	-10
6	CALIPER (in)	16	10 (ft3)	0 30	COMPENSATED NEUTRON (pu)	-10
0	MINMK	20	TBHV		-0.25 CORRECTION (g/cc)	0.25
			0 (ft3)	10		





0	GAMMA RAY (GAPI)	150	ABHV	30	COMPENSATED DENSITY (pu)	-10
6	CALIPER (in)	16	10 (ft3)	0 30	COMPENSATED NEUTRON (pu)	-10
0	MINMK	20	TBHV		-0.25 CORRECTION (g/cc)	0.25
			0 (ft3)	10		

Calibration Report

Database File: 010174ddn.db
 Dataset Pathname: pass8.2
 Dataset Creation: Thu Jan 10 03:51:26 2013 by Calc Open-Cased 090629

Dual Induction Calibration Report

Serial-Model: PROBE7-DILG
 Surface Cal Performed: Wed Jul 30 06:14:24 2008
 Downhole Cal Performed: Mon Jul 28 12:02:56 2008
 After Survey Verification Performed: Mon Jul 28 12:02:56 2008

Surface Calibration

Readings

References

Results

Loop:	Air	Loop		Air	Loop		m	b
Deep	-0.014	0.629	V	0.000	400.000	mmho/m	621.923	8.759
Medium	0.039	0.728	V	0.000	464.000	mmho/m	673.322	-26.058
Internal:	Zero	Cal		Zero	Cal		m	b
Deep	0.011	0.610	V	0.000	400.000	mmho/m	667.135	-7.256
Medium	0.005	0.712	V	0.000	464.000	mmho/m	655.677	-3.102

Downhole Calibration								
	Readings			References			Results	
	Zero	Cal		Zero	Cal		m'	b'
Deep	0.000	0.000	mmho/m	14.508	388.384	mmho/m	1.000	0.000
Medium	0.000	0.000	mmho/m	166.367	504.400	mmho/m	1.000	0.000
LL3		7.500	V		1400.000	Ohm-m		
		0.000	V		20.000	Ohm-m		
		-7.200	V		4000.000	mmho-m		

After Survey Verification								
	Readings			Targets			Results	
	Zero	Cal		Zero	Cal		m'	b'
Deep	0.000	0.000	mmho/m	0.000	0.000	mmho/m	0.000	0.000
Medium	0.000	0.000	mmho/m	0.000	0.000	mmho/m	0.000	0.000
LL3		1.000	Ohm-m		1.000	Ohm-m		
		0.000	Ohm-m		0.000	Ohm-m		
		1.000	mmho-m		1.000	mmho-m		

Compensated Density Calibration Report								
Serial-Model:				GEAR1-GEARHART				
Source / Verifier:				147 / 147				
Master Calibration Performed:				Fri Jan 04 10:55:17 2013				

Master Calibration								
	Density			Far Detector		Near Detector		
Magnesium	1.710	g/cc		1205.77		610.74	cps	
Aluminum	2.590	g/cc		271.21		419.72	cps	
Spine Angle = 75.89				Density/Spine Ratio = 0.572				
	Size			Reading				
Small Ring	7.40	in		4.69	V			
Large Ring	14.00	in		6.52	V			

Compensated Neutron Calibration Report								
Serial Number:				NUE_2I				
Tool Model:				G				

CALIBRATION								
	Detector		Readings		Target		Normalization	
	Short Space	1.00	cps	1.00	cps	1.0000		
	Long Space	1.00	cps	1.00	cps	1.0000		

Gamma Ray Calibration Report								
Serial Number:			GR2					
Tool Model:			OPEN					
Date:			07-03-2014 11:00:10					

Performed: Mon Jan 07 22:30:14 2013

Calibrator Value: 200.0 GAPI

Background Reading: 0.0 cps

Calibrator Reading: 740.0 cps

Sensitivity: 0.3000 GAPI/cps