



MICRO
RESISTIVITY
LOG

Company	Palomino Petroleum, Inc.	
Well	McVicker Trusts #1	
Field	Wildcat	
County	Ness	State
Location:	7441 FSL & 5581 W-L	API #: 15 135 25642
SEC	13	TMP
Ground Level	205	RGE
Elevation	2689'	
Log Measured From	KB 5' AGL	
Drilling Measured From	3-4-13	
Run Number	Two	
Depth Logger	4102	
Tool Joint Interval	4102	
Casein Logger	3702	
Casein Driller	218	
Casein Logger	218	
Casein Driller	718	
Casein Logger	718	
Type Fluid in Hole	Chemical Mud	
Density / Viscosity	9.2/549	
pH / Fluid Loss	9.5/7.2	
Source of Sample	FH	
Run @ Mass Temp	1.0@102degF	
Run @ Mass Temp	1.0@102degF	
Run @ Mass Temp	1.0@102degF	
Source of Refr / Rnc	Cancelled	
Run @ BHT	96@116degF	
Time Circulation Stopped	6:00 a.m.	
Time Logger on Bottom	7:00 a.m.	
Maximum Recorded Temperature	118 degF	
Equipment Number	1127	
Location	Hays, KS	
Recorded By	Gisela Pflanzl	
Reviewed By	M Ryan Shaw	

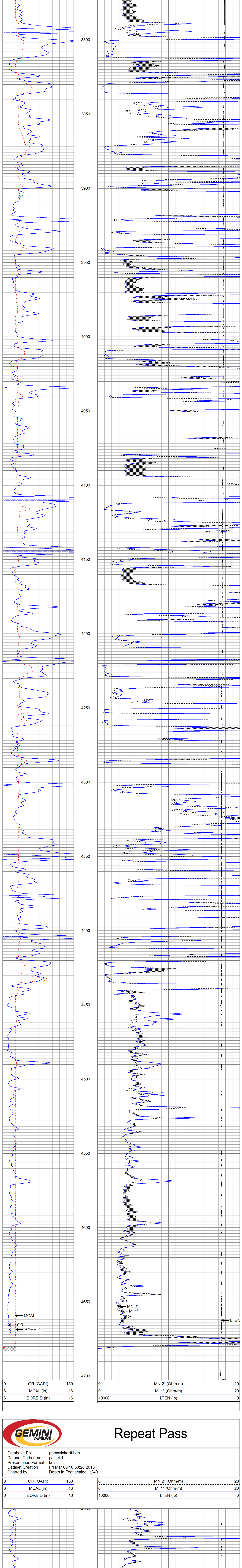
All Interpretations are opinions based on inferences from electrical or other measurements and we cannot and do not guarantee the accuracy or correctness of any interpretation, and we shall not, except in the case of gross or willful negligence on our part, be liable or responsible for any loss, costs, damages, or expenses incurred or sustained by anyone resulting from any interpretation made by any of our officers, agents or employees. These interpretations are also subject to our general terms and conditions set out in our current Price Schedule.

Comments

Thank you for using Gemini Wireline
785-625-1182

Main Pass

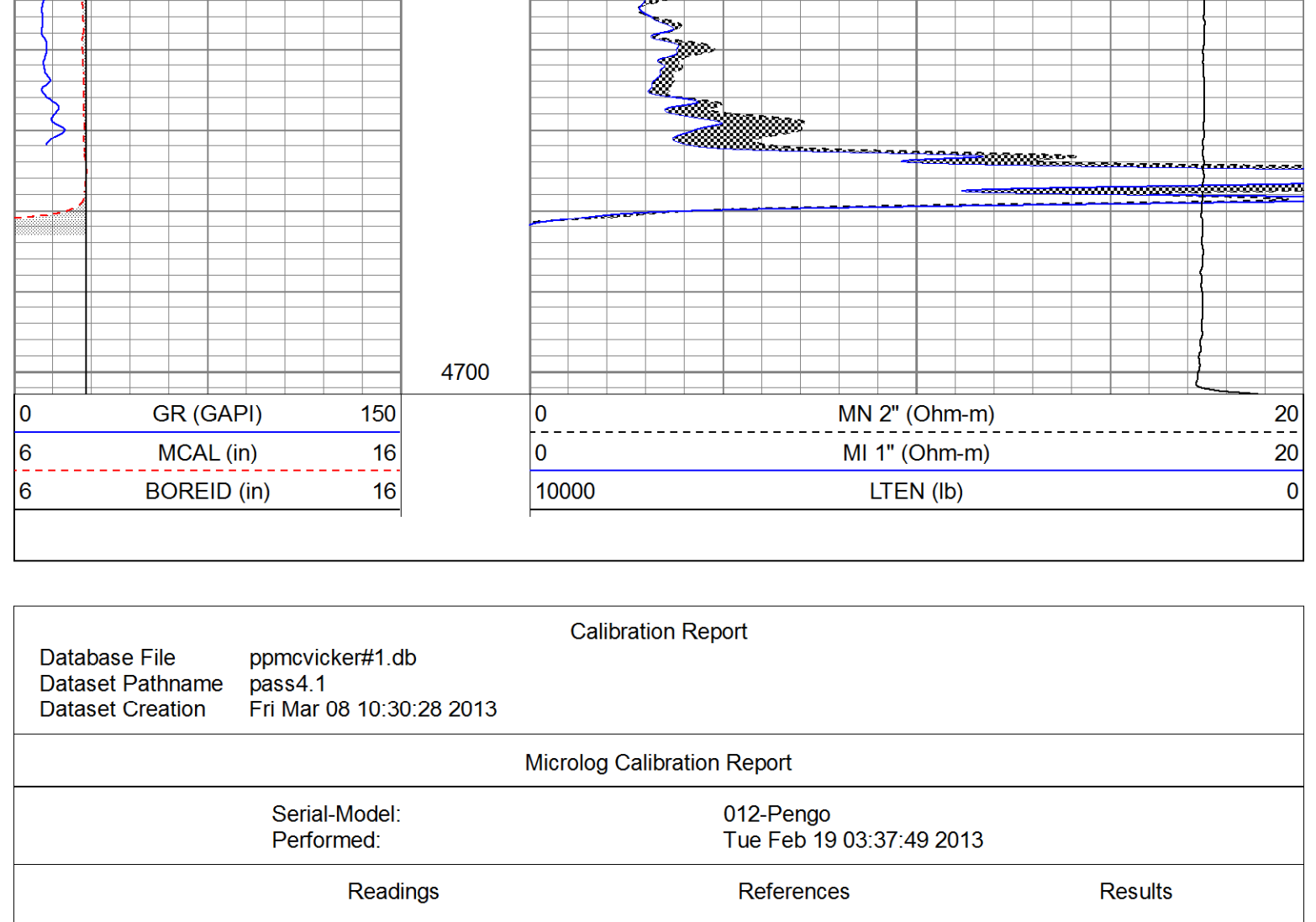
Database File	ppmckicker#1.db	
Dataset Pathname	pass5.1	
Presentation Format	kml	
Dataset Creation	Fri Mar 08 10:49:59 2013	
Charted by	Depth in Feet scaled 1:240	



GR (GAPI)	150	MN 2" (Ohm-m)	20
MCAL (in)	16	MI 1" (Ohm-m)	20
BOREID (in)	16	LTEN (lb)	0

Repeat Pass

Database File	ppmckicker#1.db	
Dataset Pathname	pass4.1	
Presentation Format	kml	
Dataset Creation	Fri Mar 08 10:30:28 2013	
Charted by	Depth in Feet scaled 1:240	



GR (GAPI)	150	MN 2" (Ohm-m)	20
MCAL (in)	16	MI 1" (Ohm-m)	20
BOREID (in)	16	LTEN (lb)	0

Calibration Report

Database File	ppmckicker#1.db	
Dataset Pathname	pass4.1	
Dataset Creation	Fri Mar 08 10:30:28 2013	

Microlog Calibration Report

Serial-Model:	012-Pengo	
Performed:	Tue Feb 19 03:37:49 2013	

	Readings			References		Results	
	Zero	Cal		Zero	Cal	m	b
Normal	0.0254	0.4358	V	0.0000	12.0000	Ohm-m	29.2405
Inverse	0.0063	0.5619	V	0.0000	8.0000	Ohm-m	-0.0910
Caliper	3.2460	6.8378	V	8.6000	15.0000	in	1.7818

Gamma Ray Calibration Report

Serial Number:	2000	
Tool Model:	P2000	
Performed:	Mon Mar 04 15:15:17 2013	

Calibrator Value:	1.0	GAPI
Background Reading:	0.0	cps
Calibrator Reading:	1.0	cps
Sensitivity:	0.2200	GAPI/cps

Sensor	Offset (ft)	Schematic	Description	Length (ft)	O.D. (in)	Weight (lb)
GR	28.59		GR-P2000 (2000)	3.67	3.25	40.00
MCAL	21.51		ML-Pengo (012)	6.97	3.50	100.00
MI	21.51		SLT-G (101127)	15.71	3.50	250.00
MN	21.51		Oh-Long	4.50	3.50	50.00
WF4	14.25					
WF3	13.25					
WF2	10.25					
WF1	9.25					

Dataset: ppmckicker#1.db: field/well/run1/pass4.1
Total length: 30.84 ft
Total weight: 440.00 lb
O.D.: 3.50 in