



**MIDWEST SURVEYS**  
 LOGGING - PERFORATING - CONSULTING SERVICES  
 P. O. Box 68, Osawatomie, KS 66064  
 913 / 755 - 2128

**GAMMA RAY / NEUTRON / CCL**

File No.

Company **Bobcat Oilfield Services, Inc.**

Well **Rigney No. 3W-12**

Field **Louisburg**

County **Miami** State **Kansas**

Location **1671' FSL & 4511' FEL  
NW-SE-NW-SW**

Other Services **Perforate**

Sec. **12** Twp. **17S** Rge. **24E** Elevation **NA**

Permanent Datum **GL** K.B. **NA**

Log Measured From **GL** D.F. **NA**

Drilling Measured From **GL** G.L. **NA**

Date **02-05-2013**

Run Number **One**

Depth Driller **475.0**

Depth Logger **469.0**

Bottom Logged Interval **468.0**

Top Log Interval **20.0**

Fluid Level **Full**

Type Fluid **Water**

Density / Viscosity **NA**

Salinity - PPM Cl **NA**

Max Recorded Temp **NA**

Estimated Cement Top **0.0**

Equipment No. **107** Location **Osawatomie**

Recorded By **Steve Vindisch**

Witnessed By **Bob Eberhart**

BORE-HOLE RECORD		CASING RECORD	
NO.	BIT FROM TO	SIZE	WGT. FROM TO
One	8.75" 0.0 20.0	6.50"	15.0# 0.0
Two	5.625" 20.0 475.0	2.875"	6.5# 0.0

<<< Fold Here >>>

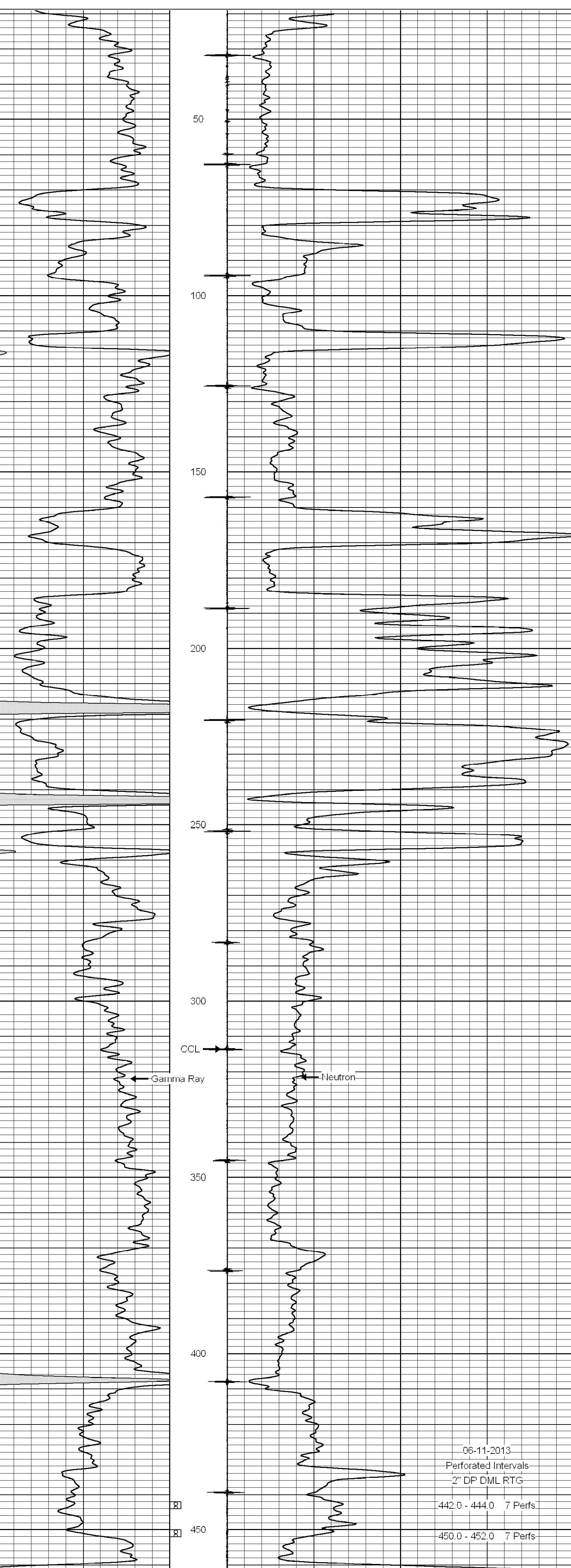
All interpretations are opinions based on inferences from electrical or other measurements and we cannot and do not guarantee the accuracy or correctness of any interpretation, and we shall not, except in the case of gross or willful negligence on our part, be liable or responsible for any loss, costs, damages, or expenses incurred or sustained by anyone resulting from any interpretation made by any of our officers, agents or employees. These interpretations are also subject to our general terms and conditions set out in our current Price Schedule.

**Comments**

Drilling Contractor :  
**Dale Jackson Production Company**

Database File: rigney3w12.db  
 Dataset Pathname: pass1  
 Presentation Format: gr-n-ccl  
 Dataset Creation: Tue Feb 05 14:49:49 2013 by Log SCH 111116  
 Charted by: Depth in Feet scaled 1:240

0	Gamma Ray (cps)	150	10	Neutron (cps)	2100
150	Gamma Ray (cps)	300			



06-11-2013  
 Perforated Intervals  
 2" DP DML RTG  
 442.0 - 444.0 7 Perfs.  
 450.0 - 452.0 7 Perfs.

0	Gamma Ray (cps)	150	10	Neutron (cps)	2100
150	Gamma Ray (cps)	300			