



DIGITAL LOG

(785) 625-3858

Dual Compensated  
Porosity Log

15-165-21,979-00-00

API No.

Company **Black Tea Oil, LLC.**  
Well **Mcantyre No.1**  
Field **Otis-Albert**  
County **Rush** State **Kansas**

Location **SE NE SW SE  
885' FSL & 1535' FEL**

Sec: **27** Twp: **18 S** Rge: **16 W**

Other Services  
DIL  
MEL/BHCS

Elevation

K.B. 1983  
D.F.  
G.L. 1976

Permanent Datum Ground Level Elevation 1976  
Log Measured From Kelly Bushing 7 Ft. Above Perm. Datum  
Drilling Measured From Kelly Bushing

Date 6/15/2012

Run Number One

Type Log CNL / CDL

Depth Driller 3694

Depth Logger 3695

Bottom Logged Interval 3674

Top Logged Interval 2900

Type Fluid In Hole Chemical

Salinity, PPM CL 9000

Density 9.4

Level Full

Max. Rec. Temp. F 113

Operating Rig Time 4 Hours

Equipment -- Location 15 Days

Recorded By D Kerr

Witnessed By Ted Pfau

| Borehole Record |       |      |      | Casing Record |      |      |      |
|-----------------|-------|------|------|---------------|------|------|------|
| Run No.         | Bit   | From | To   | Size          | Wgt. | From | To   |
| 1               | 12.25 | 00   | 1030 | 8.625         | 24#  | 00   | 1030 |
| 2               | 7.875 | 1030 | 3694 |               |      |      |      |

<<< Fold Here >>>

All interpretations are opinions based on inferences from electrical or other measurements and we cannot and do not guarantee the accuracy or correctness of any interpretation, and we shall not, except in the case of gross or willful negligence on our part, be liable or responsible for any loss, costs, damages, or expenses incurred or sustained by anyone resulting from any interpretation made by any of our officers, agents or employees. These interpretations are also subject to our general terms and conditions set out in our current Price Schedule.

Comments

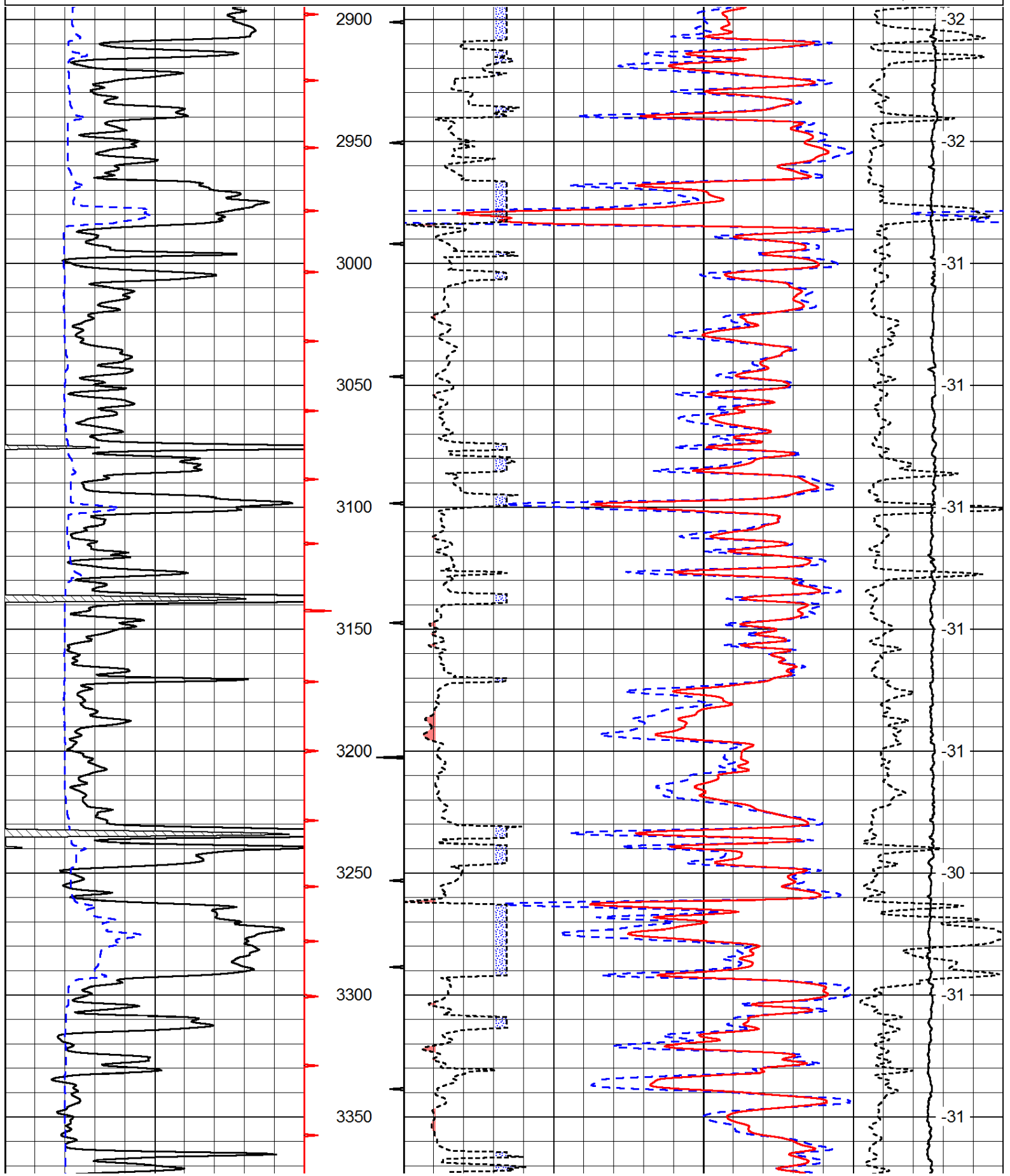
Thank you for using Log-Tech, Inc.  
(785) 625-3858

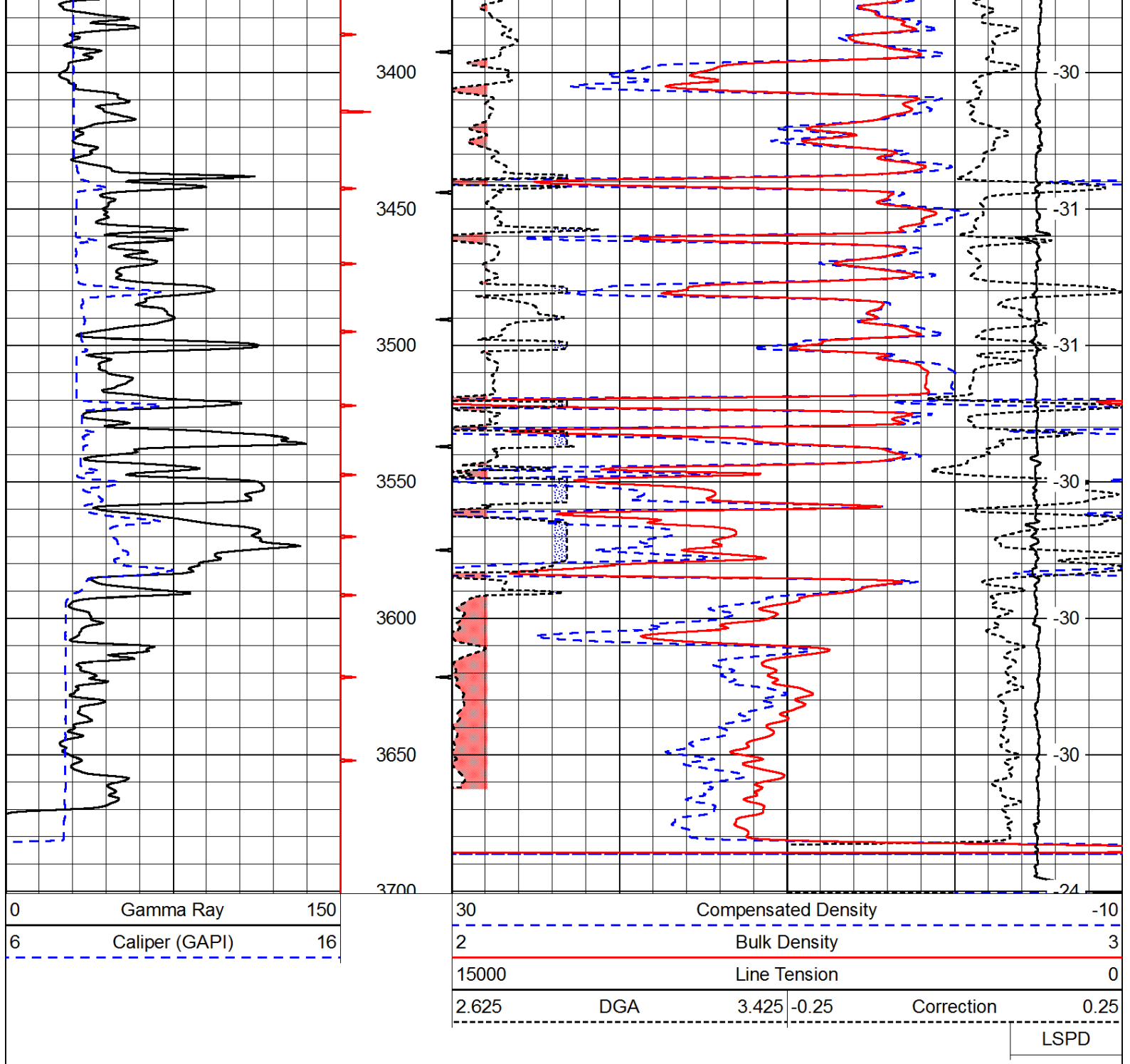
Albert KS, 3 1/2 west,  
1 South, 1/2 West,  
North Into

Database File: c:\warrior\data\black tea oil\_mcantyre #1\blacktea\_mcantyre\_1hd.db  
Dataset Pathname: DIL/blktstk2  
Presentation Format: cdl  
Dataset Creation: Fri Jun 15 16:08:16 2012  
Charted by: Depth in Feet scaled 1:600

|   |                |     |
|---|----------------|-----|
| 0 | Gamma Ray      | 150 |
| 6 | Caliper (GAPI) | 16  |

|            |                     |       |       |
|------------|---------------------|-------|-------|
| 30         | Compensated Density |       | -10   |
| 2          | Bulk Density        |       | 3     |
| 15000      | Line Tension        |       | 0     |
| 2.625      | DGA                 | 3.425 | -0.25 |
| Correction |                     |       | 0.25  |
| LSPD       |                     |       |       |





Database File: c:\warrior\data\black tea oil\_mcantyre #1\blacktea\_mcantyre\_1hd.db  
 Dataset Pathname: DIL/blktstk2  
 Presentation Format: cndlspec  
 Dataset Creation: Fri Jun 15 16:08:16 2012  
 Charted by: Depth in Feet scaled 1:240

