



DIGITAL LOG (785) 625-3858

Dual Induction Log

15-165-21,979-00-00

API No.

Company Black Tea Oil, LLC.

Well Mcantyre No.1

Field Otis-Albert

County Rush State Kansas

Location SE NE SW SE  
885' FSL & 1535' FEL

Other Services  
CNL/CDL  
MEL/BHCS

Sec: 27 Twp: 18 S Rge: 16 W

Permanent Datum Ground Level Elevation 1976  
Log Measured From Kelly Bushing 7 Ft. Above Perm. Datum  
Drilling Measured From Kelly Bushing

Elevation  
K.B. 1983  
D.F. 1976  
G.L. 1976

Date 6/15/2012

Run Number One

Depth Driller 3694

Depth Logger 3695

Bottom Logged Interval 3694

Top Log Interval 1000

Casing Driller 8.625 @ 1030

Casing Logger 1029

Bit Size 7.875

Type Fluid in Hole Chemical

Salinity,ppm CL 9000

Density / Viscosity 9.4 52

pH / Fluid Loss 9.0 8.8

Source of Sample Flowline

Rm @ Meas. Temp .60 @ 85

Rmf @ Meas. Temp .45 @ 85

Rmc @ Meas. Temp .81 @ 85

Source of Rmf / Rmc Charts

Rm @ BHT .45 @ 113

Operating Rig Time 4 Hours

Max Rec. Temp. F 113

Equipment Number 15

Location Hays

Recorded By D.Kerr

Witnessed By Ted Pfau

<<< Fold Here >>>

All interpretations are opinions based on inferences from electrical or other measurements and we cannot and do not guarantee the accuracy or correctness of any interpretation, and we shall not, except in the case of gross or willful negligence on our part, be liable or responsible for any loss, costs, damages, or expenses incurred or sustained by anyone resulting from any interpretation made by any of our officers, agents or employees. These interpretations are also subject to our general terms and conditions set out in our current Price Schedule.

Comments

Thank you for using Log-Tech, Inc.  
(785) 625-3858

Albert KS, 3 1/2 west,  
1 South, 1/2 West,  
North Into

Database File: c:\warrior\data\black tea oil\_mcantyre #1\blacktea\_mcantyre\_1hd.db  
Dataset Pathname: DIL/blktstk2  
Presentation Format: dil2in  
Dataset Creation: Fri Jun 15 16:08:16 2012  
Charted by: Depth in Feet scaled 1:600

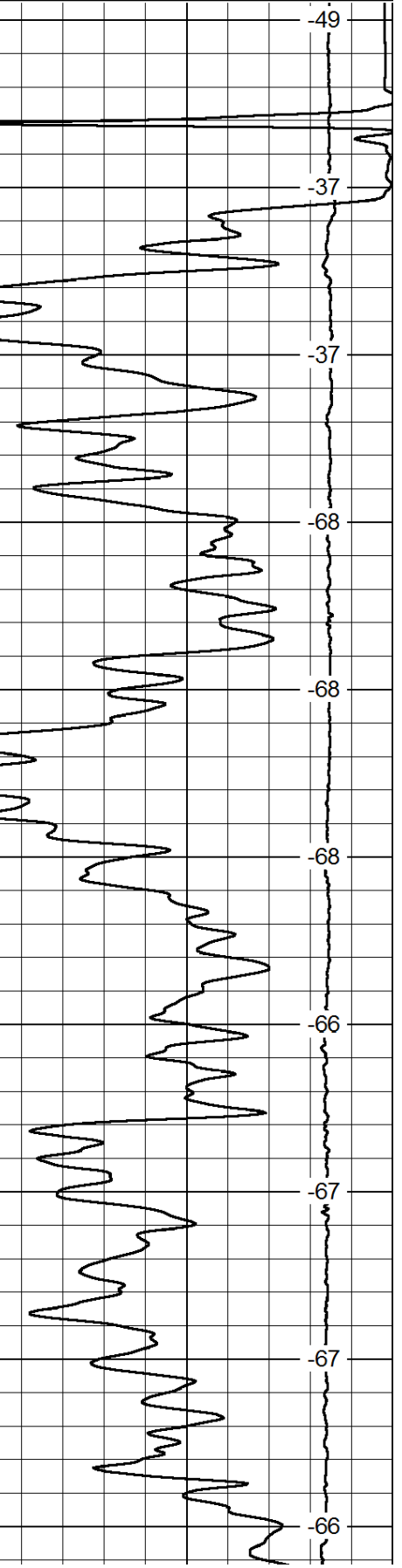
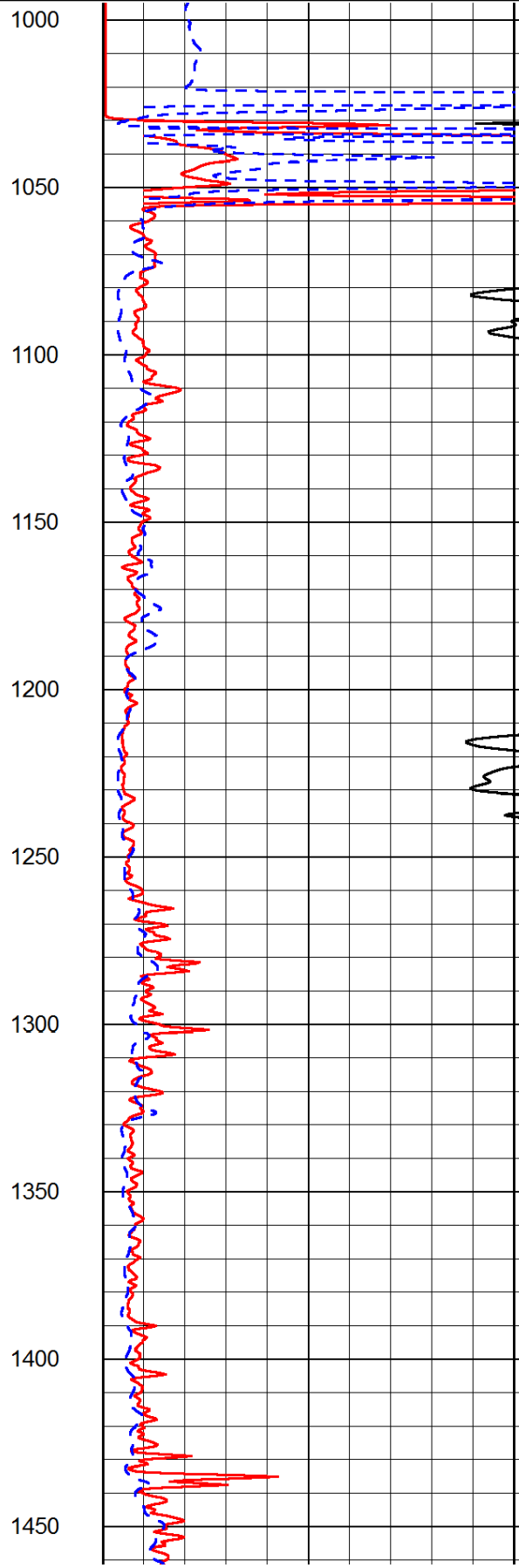
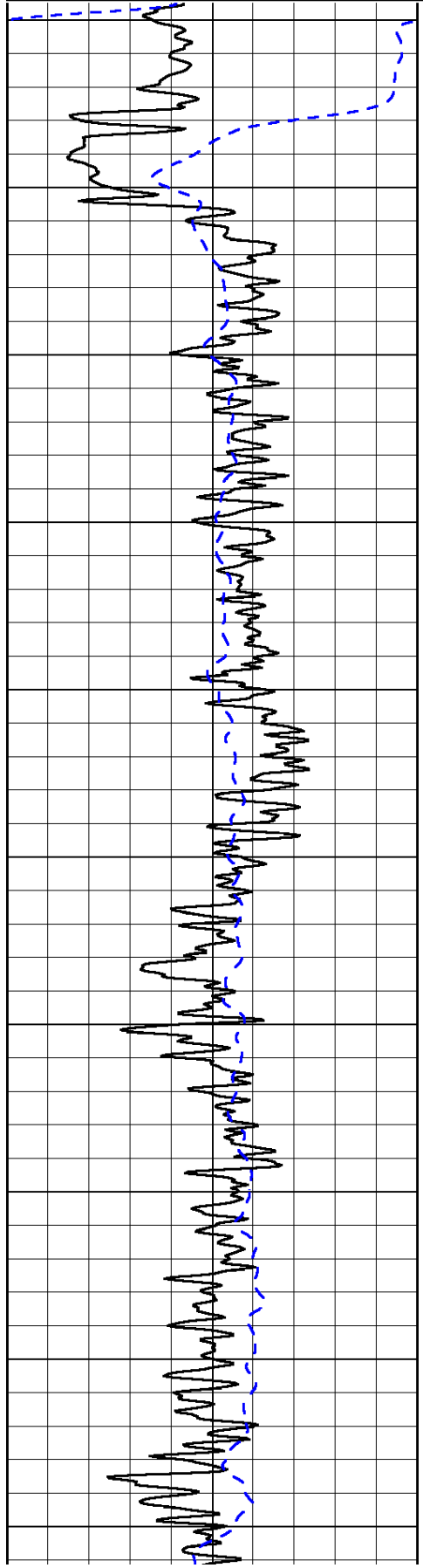
0	Gamma Ray	150
-200	SP (mV)	0

0	Shallow Resistivity	50
0	Deep Resistivity	50

LSPD

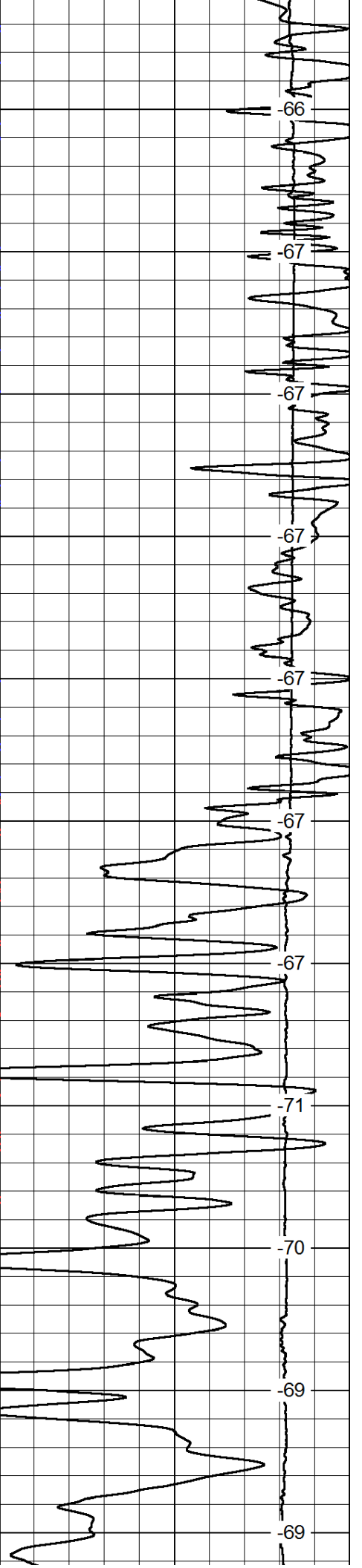
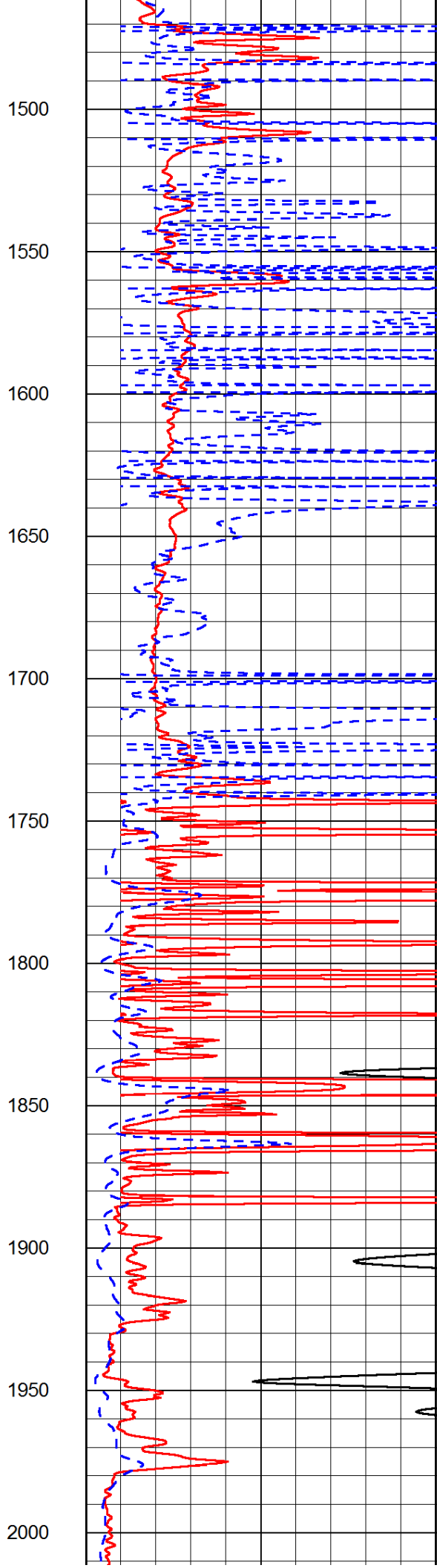
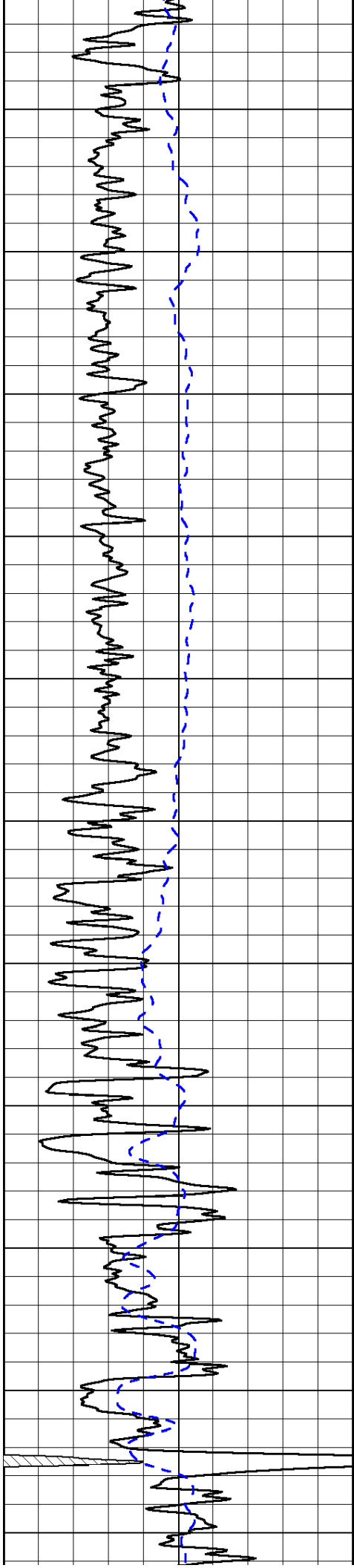
1000	Conductivity	0
15000	Line Tension	0

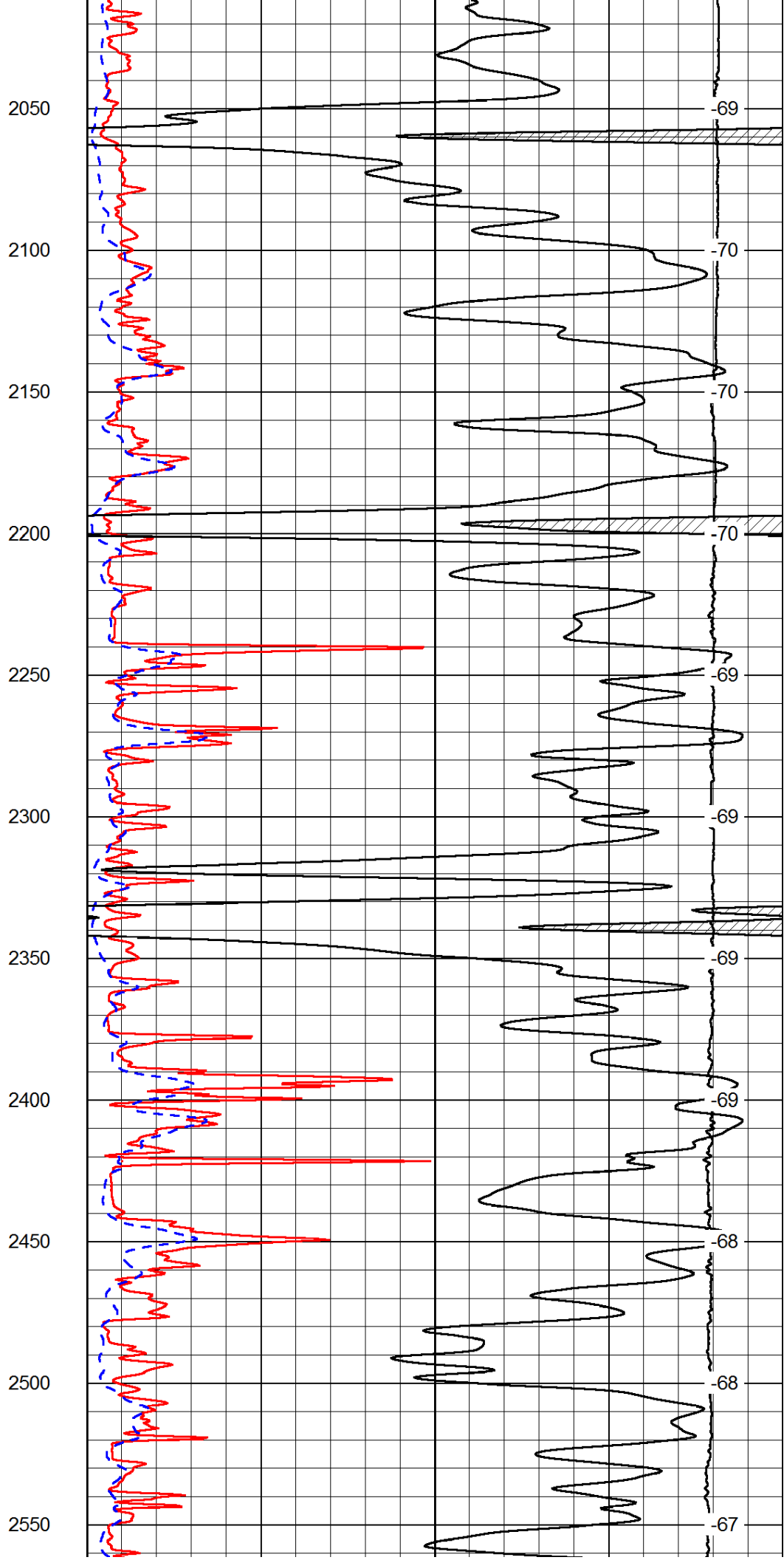
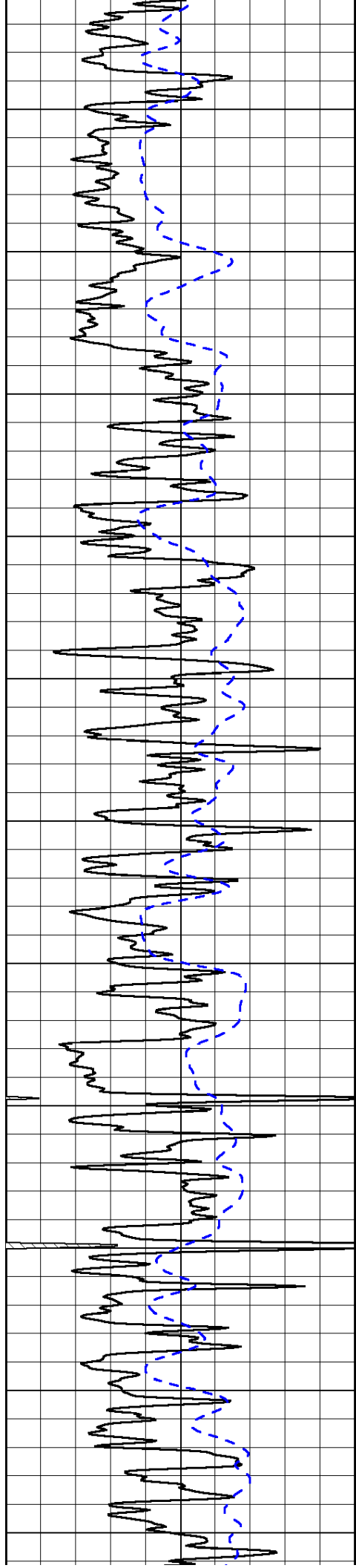
50	Shallow Resistivity	500
50	Deep Resistivity	500

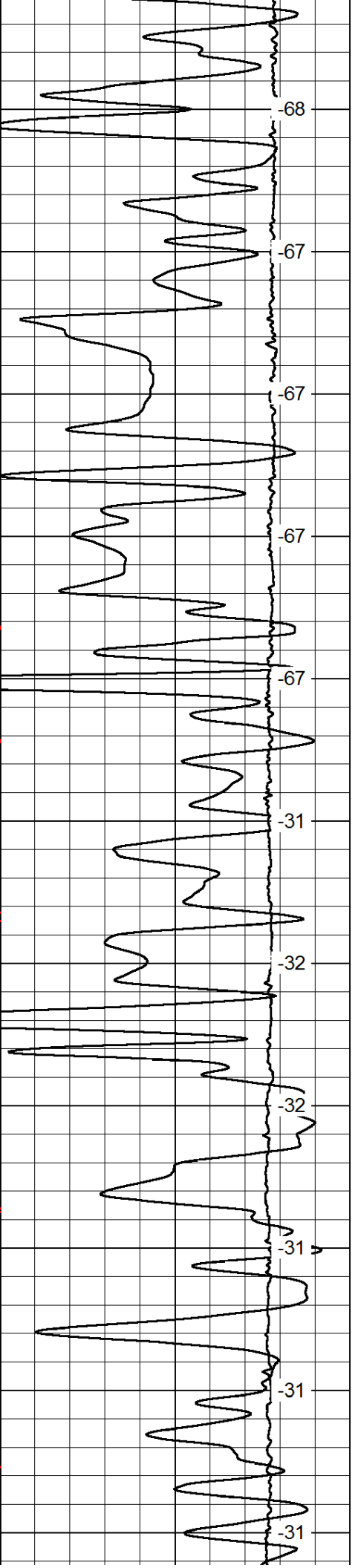
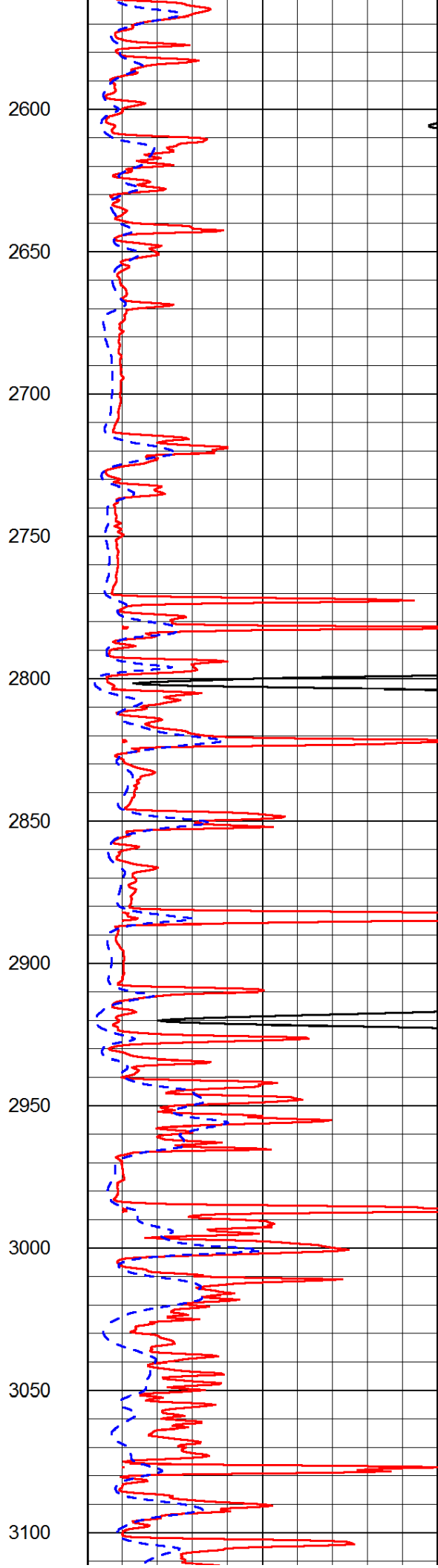
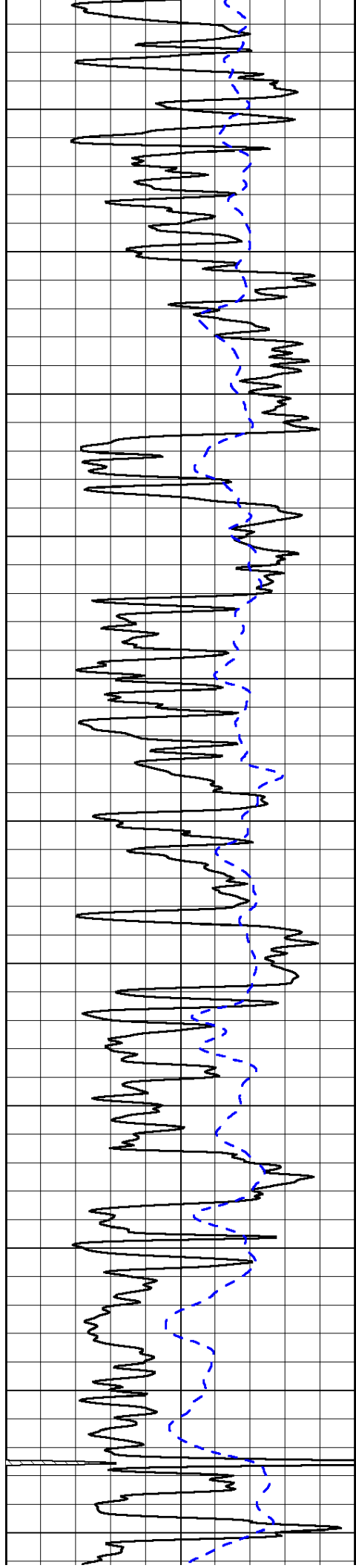


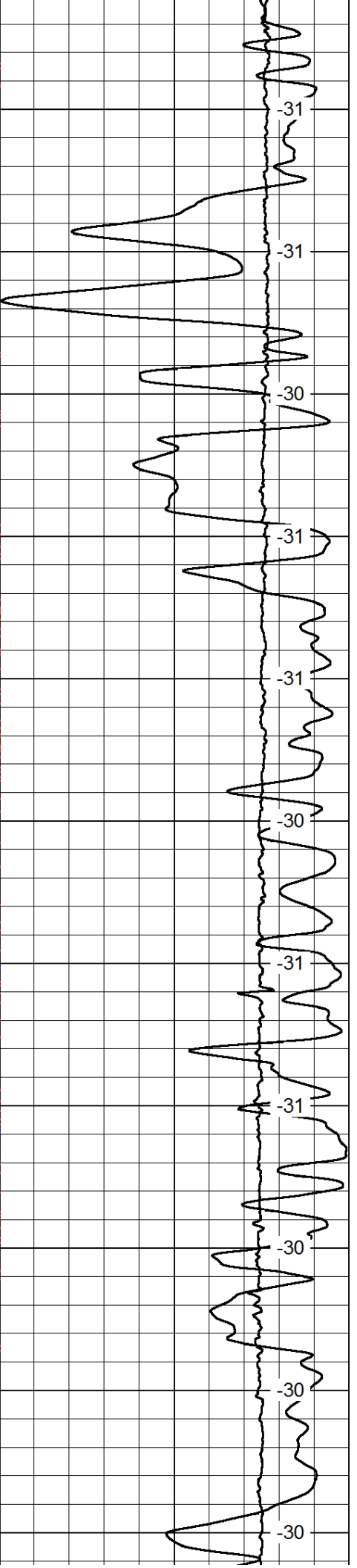
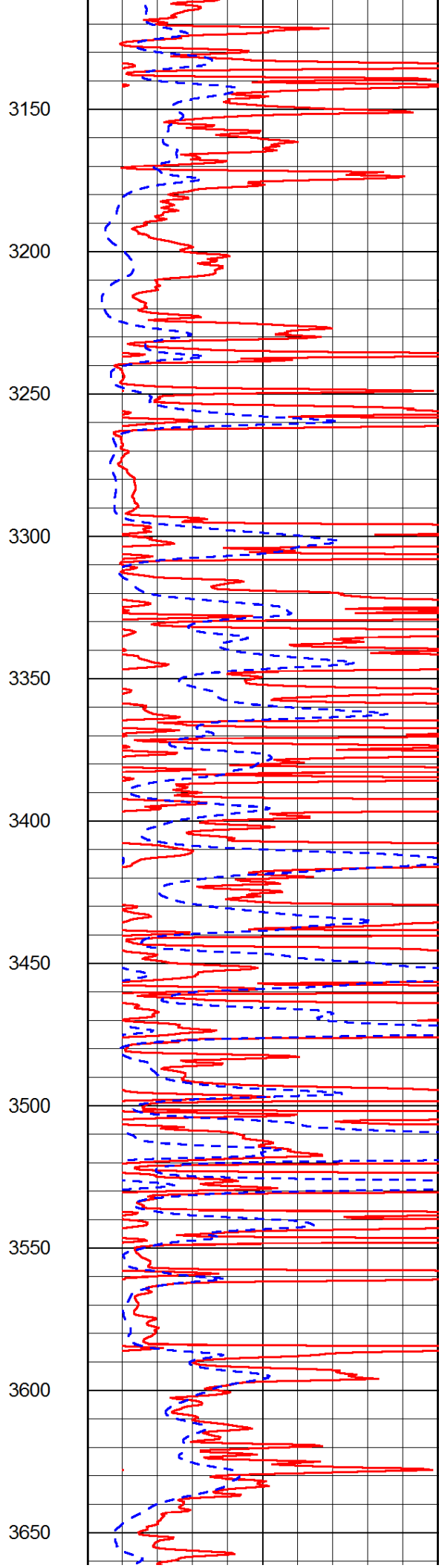
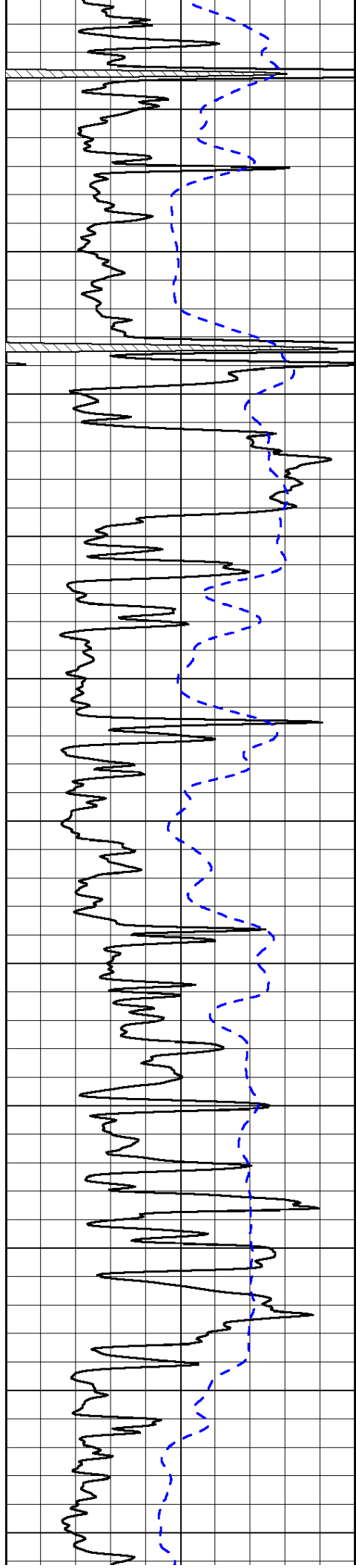
1000  
1050  
1100  
1150  
1200  
1250  
1300  
1350  
1400  
1450

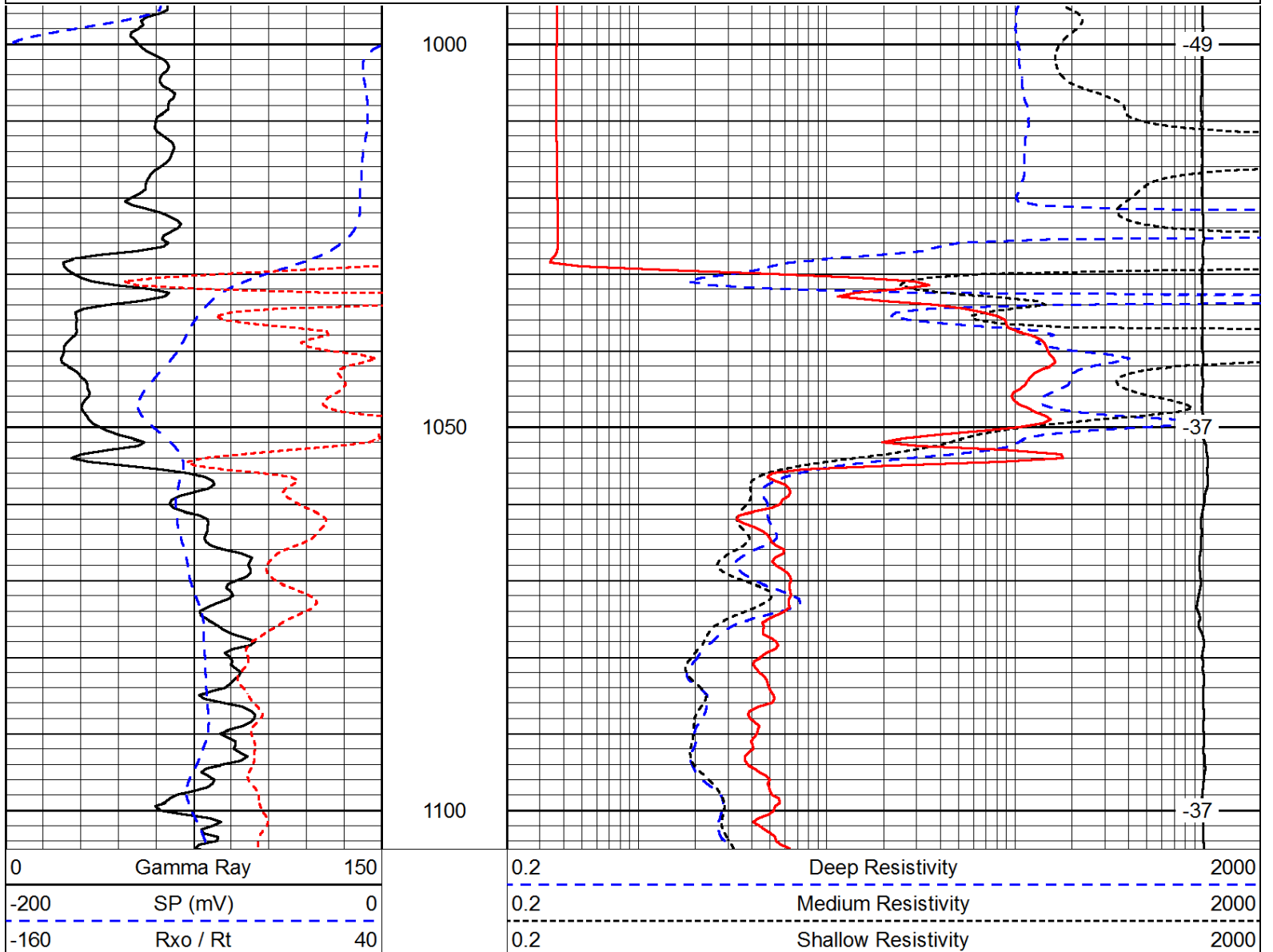
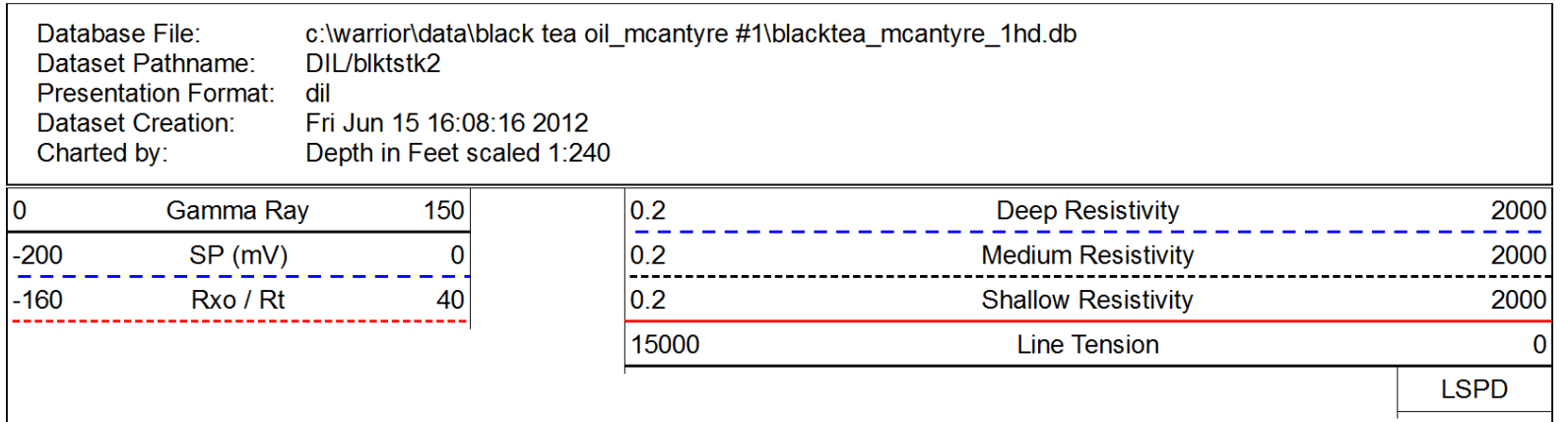
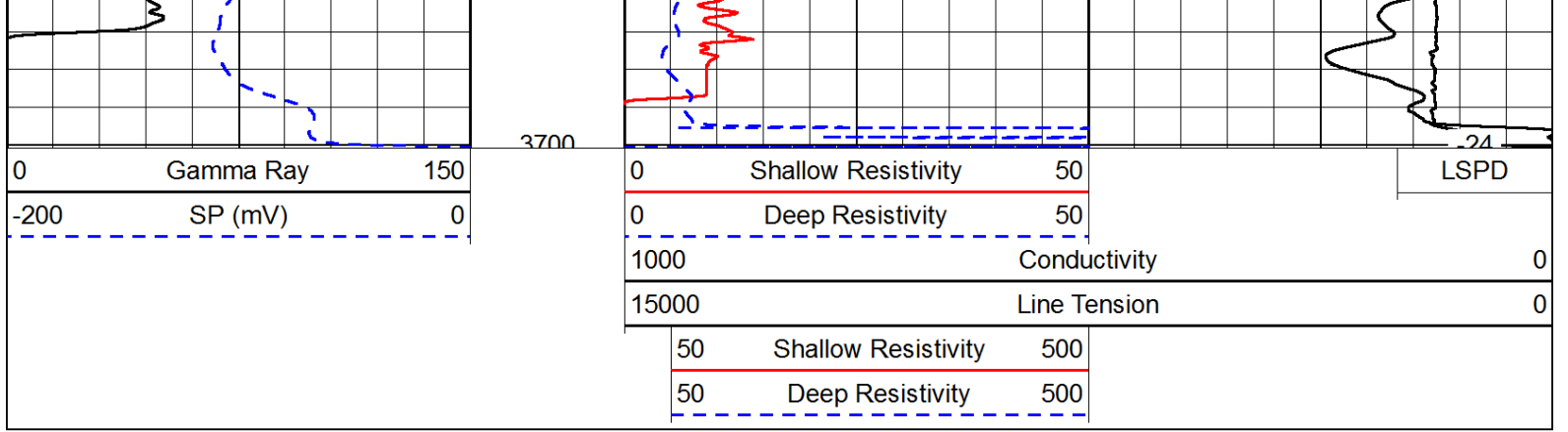
49  
37  
37  
68  
68  
68  
68  
66  
67  
67  
66







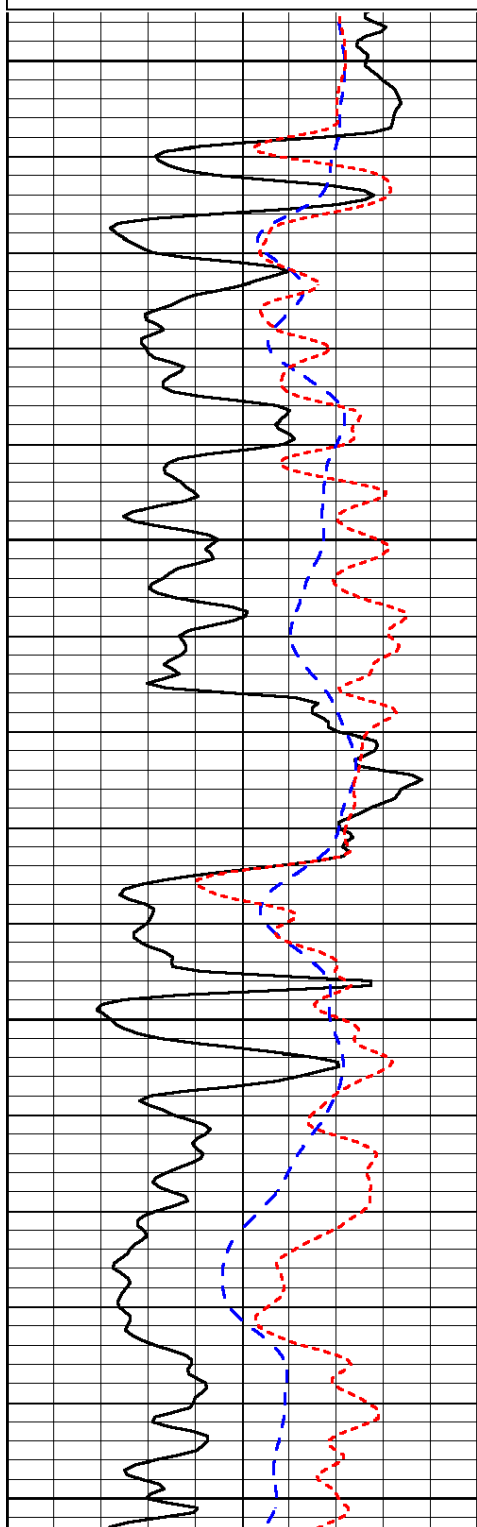




Database File: c:\warrior\data\black tea oil\_mcantyre #1\blacktea\_mcantyre\_1hd.db  
 Dataset Pathname: DIL/blktstk2  
 Presentation Format: dil  
 Dataset Creation: Fri Jun 15 16:08:16 2012  
 Charted by: Depth in Feet scaled 1:240

0	Gamma Ray	150
-200	SP (mV)	0
-160	Rxo / Rt	40

0.2	Deep Resistivity	2000
0.2	Medium Resistivity	2000
0.2	Shallow Resistivity	2000
15000	Line Tension	0

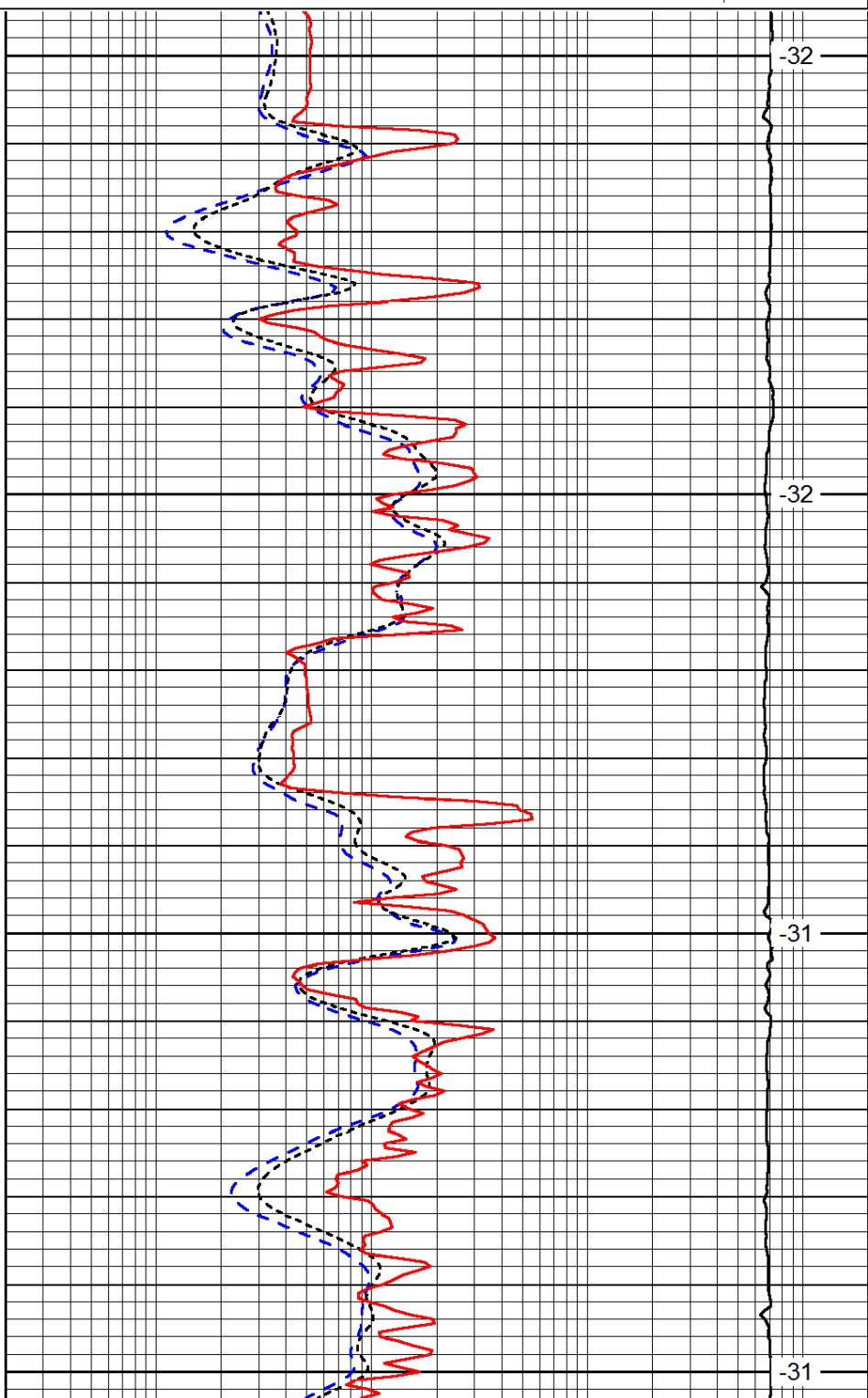


2900

2950

3000

3050



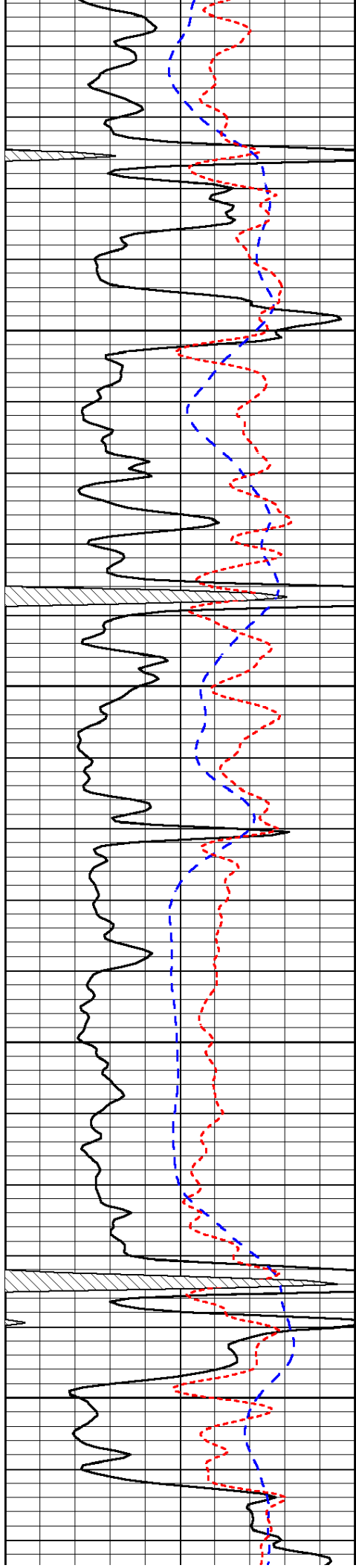
-32

-32

-31

-31



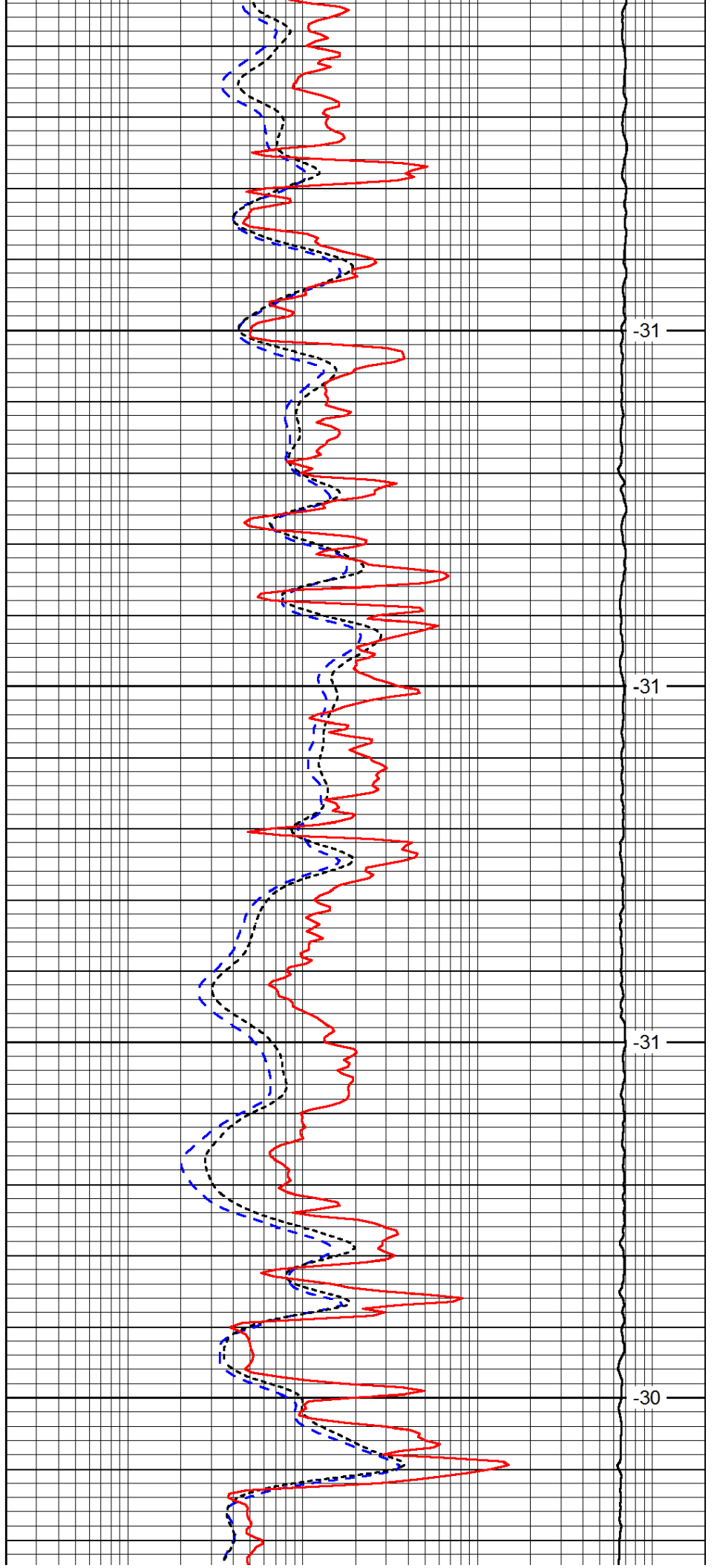


3100

3150

3200

3250

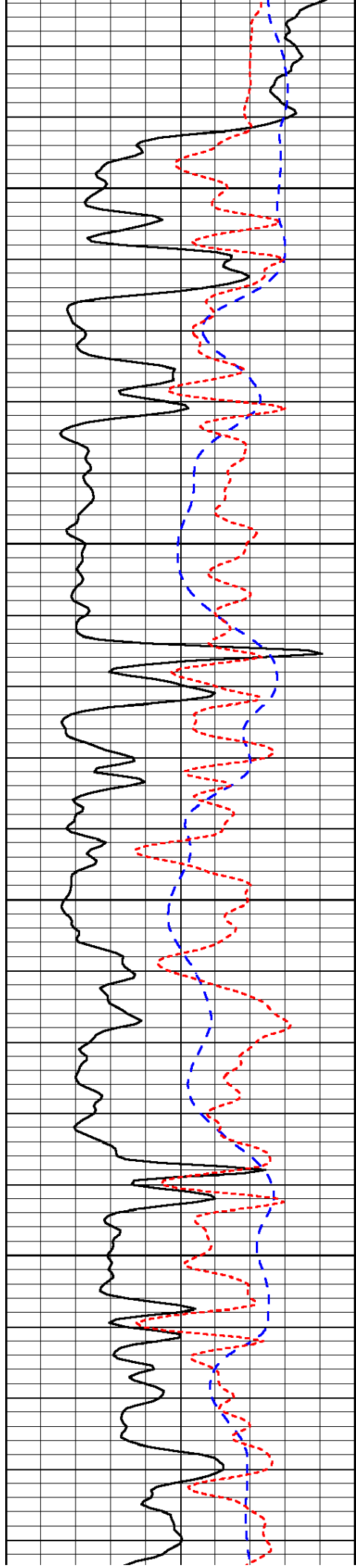


-31

-31

-31

-30

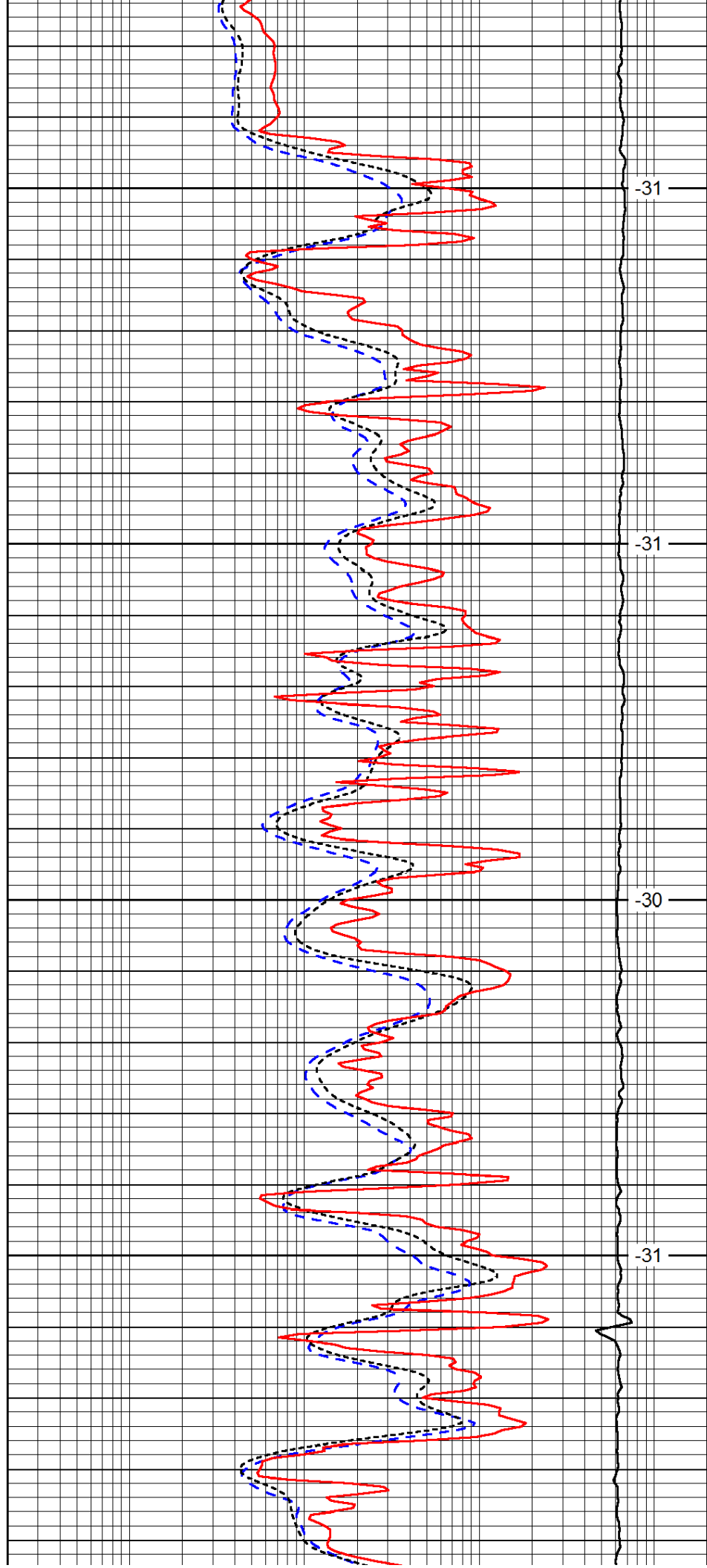


3300

3350

3400

3450

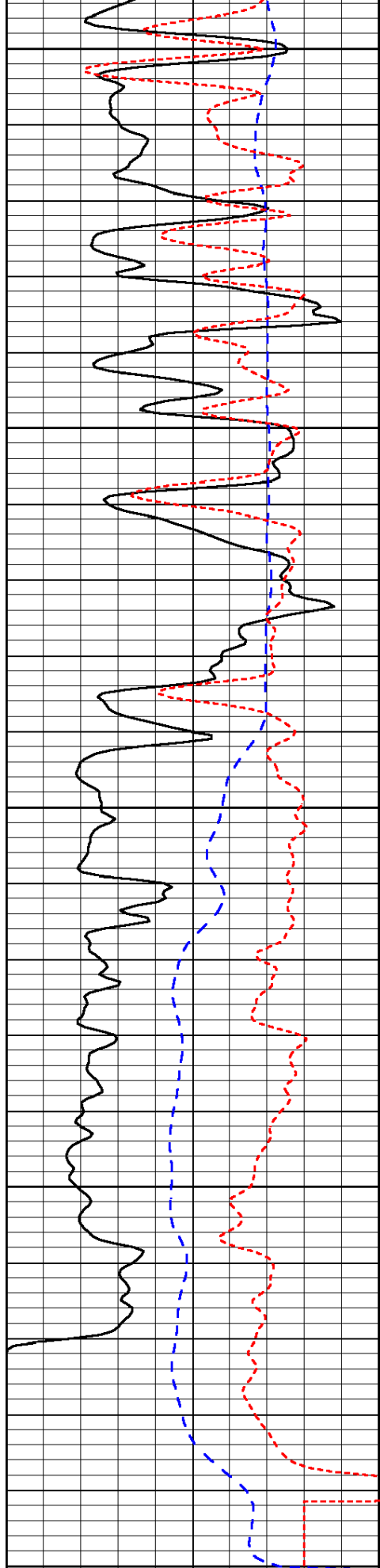


-31

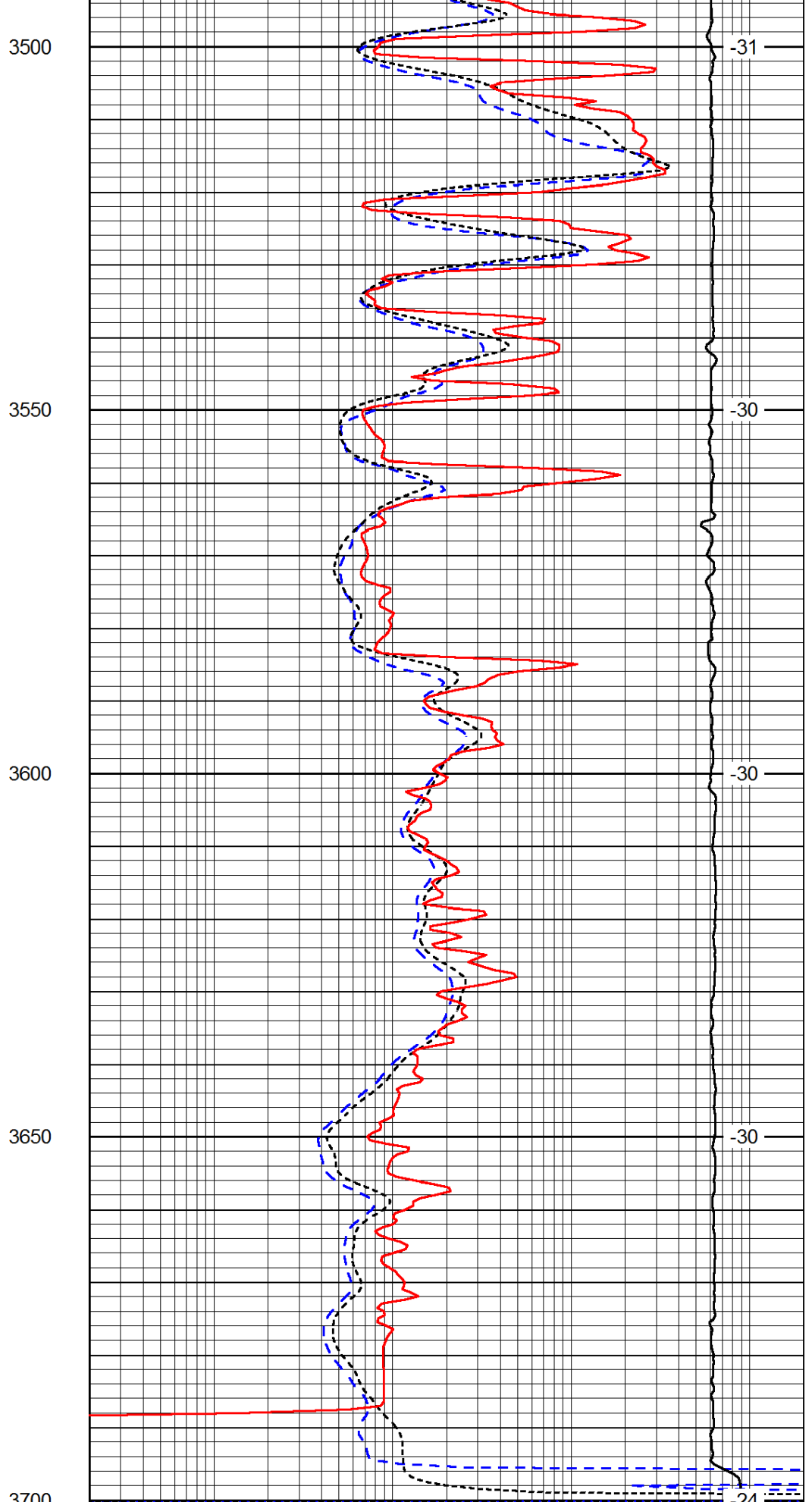
-31

-30

-31



0	Gamma Ray	150
-200	SP (mV)	0
-160	Rxo / Rt	40



0.2	Deep Resistivity	2000
0.2	Medium Resistivity	2000
0.2	Shallow Resistivity	2000

15000

Line Tension

0

LSPD