



DIGITAL LOG (785) 625-3858

Microresistivity Log

15-165-21,979-00-00

API No.

Company Black Tea Oil, LLC.

Well Mcantyre No.1

Field Otis-Albert

County Rush State Kansas

Location

SE NE SW SE
885' FSL & 1535' FEL

Sec: 27 Twp: 18 S Rge: 16 W

Permanent Datum Ground Level Elevation 1976
Log Measured From Kelly Bushing 7 Ft. Above Perm. Datum

Drilling Measured From Kelly Bushing

Other Services
CNL/CDL
DIL/BHCS

Elevation
K.B. 1983
D.F. 1976
G.L. 1976

Date 6/15/2012

Run Number Two

Depth Driller 3694

Depth Logger 3695

Bottom Logged Interval 3694

Top Log Interval 2900

Casing Driller 8.625 @ 1030

Casing Logger 1029

Bit Size 7.875

Type Fluid in Hole Chemical

Salinity,ppm CL 9000

Density / Viscosity 9.4 52

pH / Fluid Loss 9.0 8.8

Source of Sample Flowline

Rm @ Meas. Temp .60 @ 85

Rmf @ Meas. Temp .45 @ 85

Rmc @ Meas. Temp .81 @ 85

Source of Rmf / Rmc Charts

Rm @ BHT .45 @ 113

Operating Rig Time 4 Hours

Max Rec. Temp. F 113

Equipment Number 15

Location Hays

Recorded By D.Kerr

Witnessed By Ted Pfau

<<< Fold Here >>>

All interpretations are opinions based on inferences from electrical or other measurements and we cannot and do not guarantee the accuracy or correctness of any interpretation, and we shall not, except in the case of gross or willful negligence on our part, be liable or responsible for any loss, costs, damages, or expenses incurred or sustained by anyone resulting from any interpretation made by any of our officers, agents or employees. These interpretations are also subject to our general terms and conditions set out in our current Price Schedule.

Comments

Thank you for using Log-Tech, Inc.
(785) 625-3858

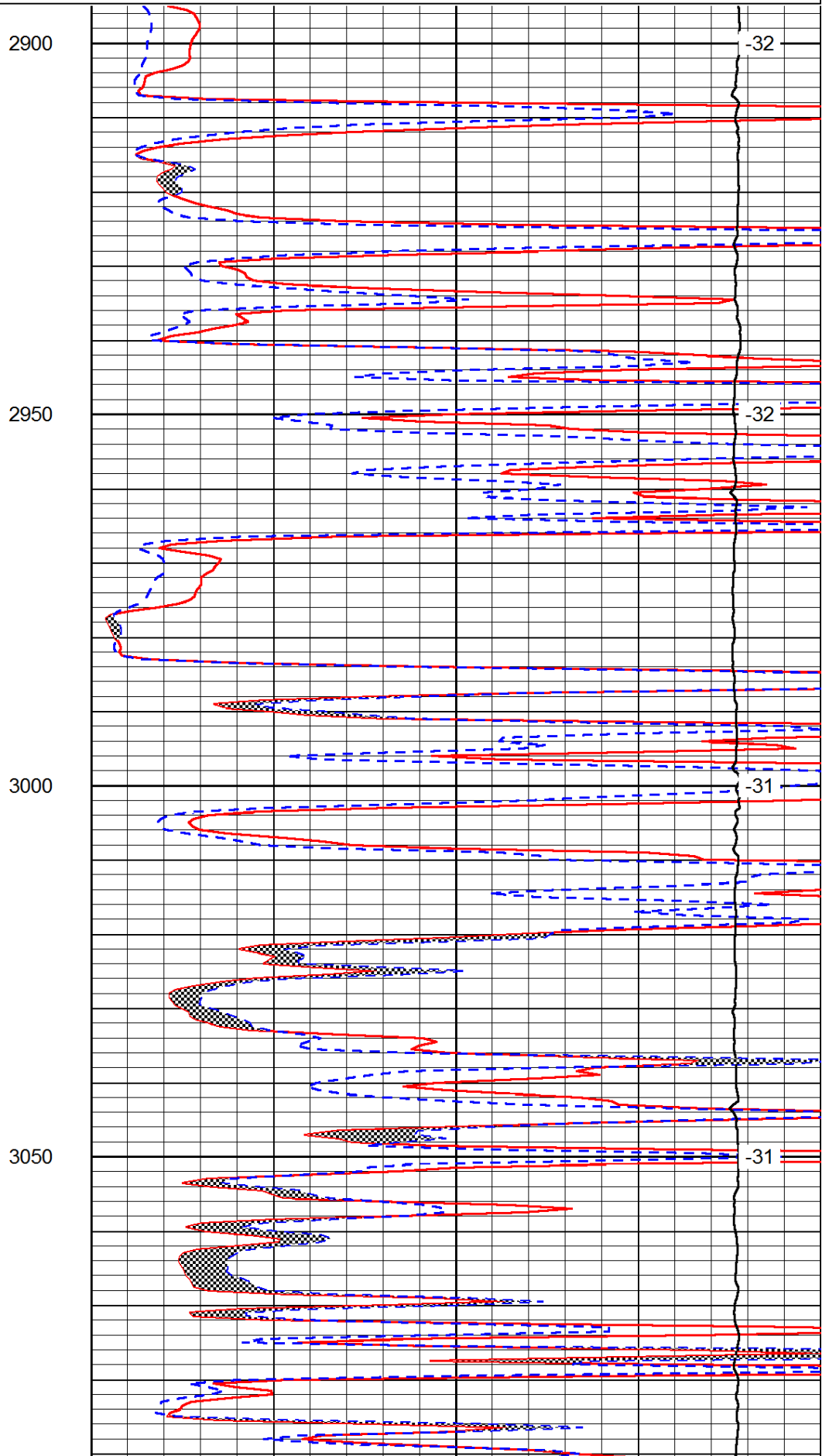
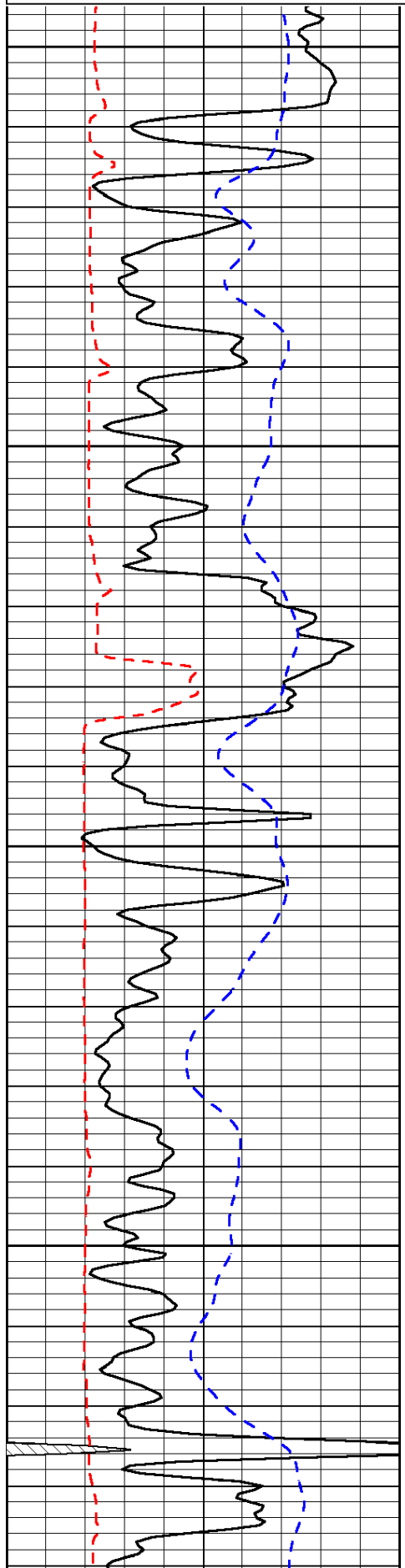
Albert KS, 3 1/2 west,
1 South, 1/2 West,
North Into

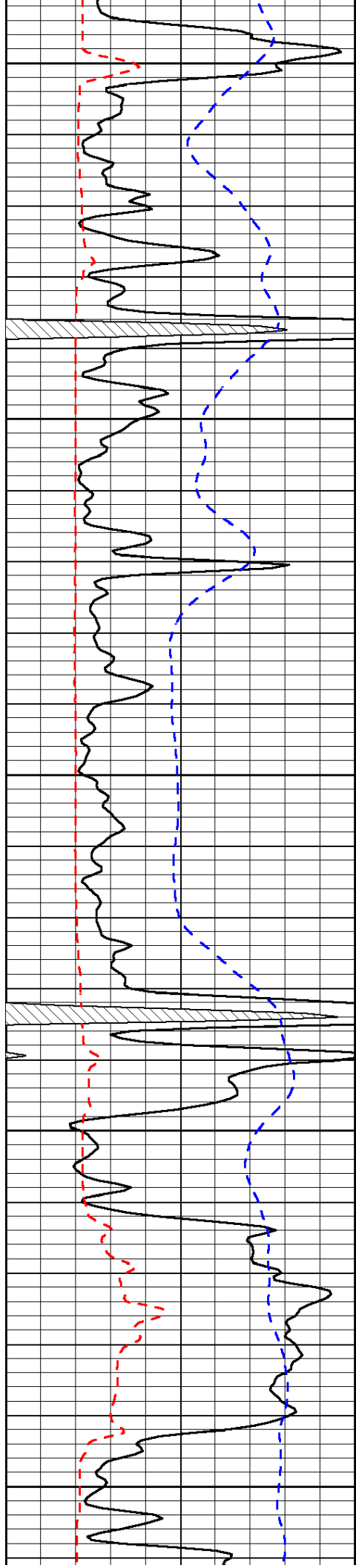
Database File: c:\warrior\data\black tea oil_mcantyre #1\blacktea_mcantyre_1hd.db
Dataset Pathname: DIL/blktstk2
Presentation Format: micro
Dataset Creation: Fri Jun 15 16:08:16 2012
Charted by: Depth in Feet scaled 1:240

0	Gamma Ray	150
6	Micro Log Caliper (GAPI)	16
-200	SP (mV)	0

0	Micro Inverse 1 X 1	40
0	Micro Normal 2"	40
15000	Line Weight	0

LSPD





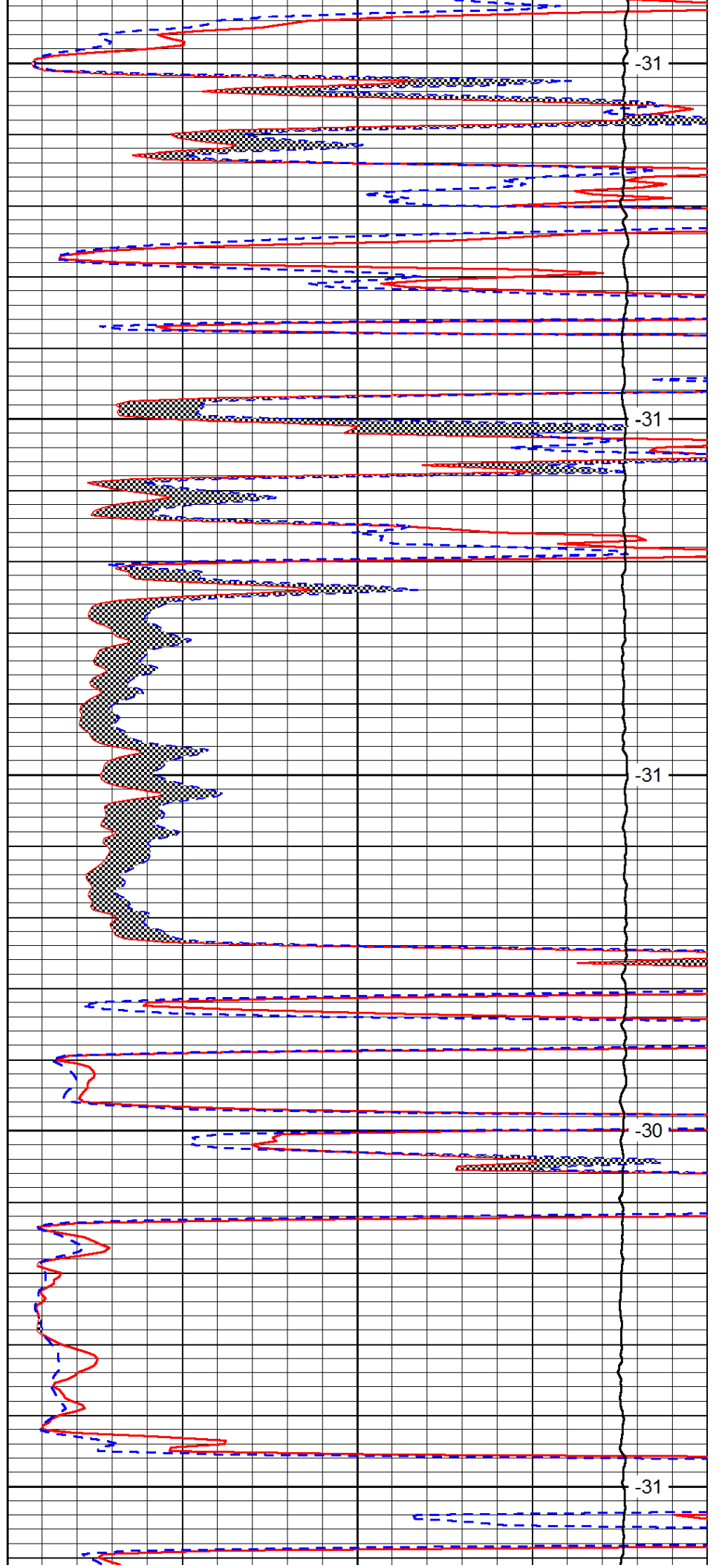
3100

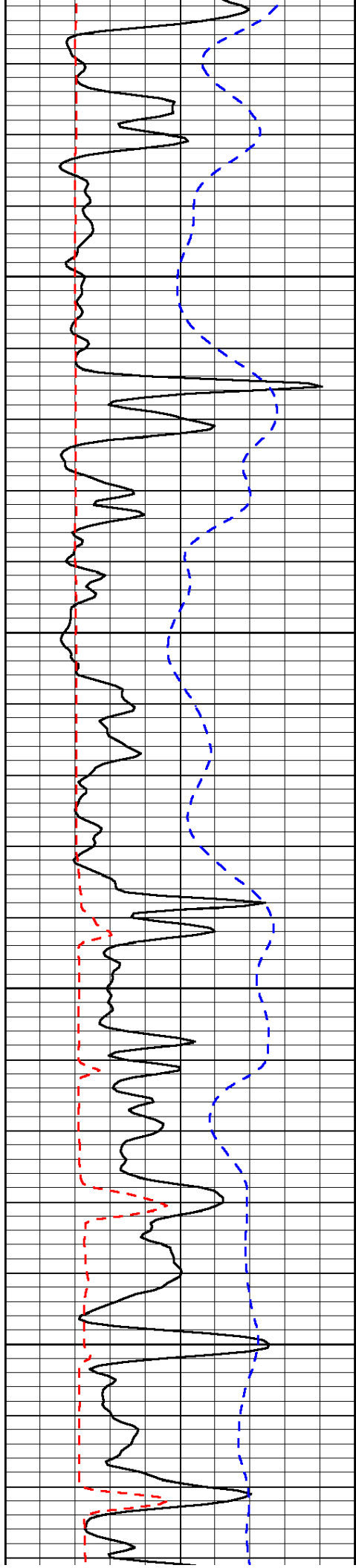
3150

3200

3250

3300



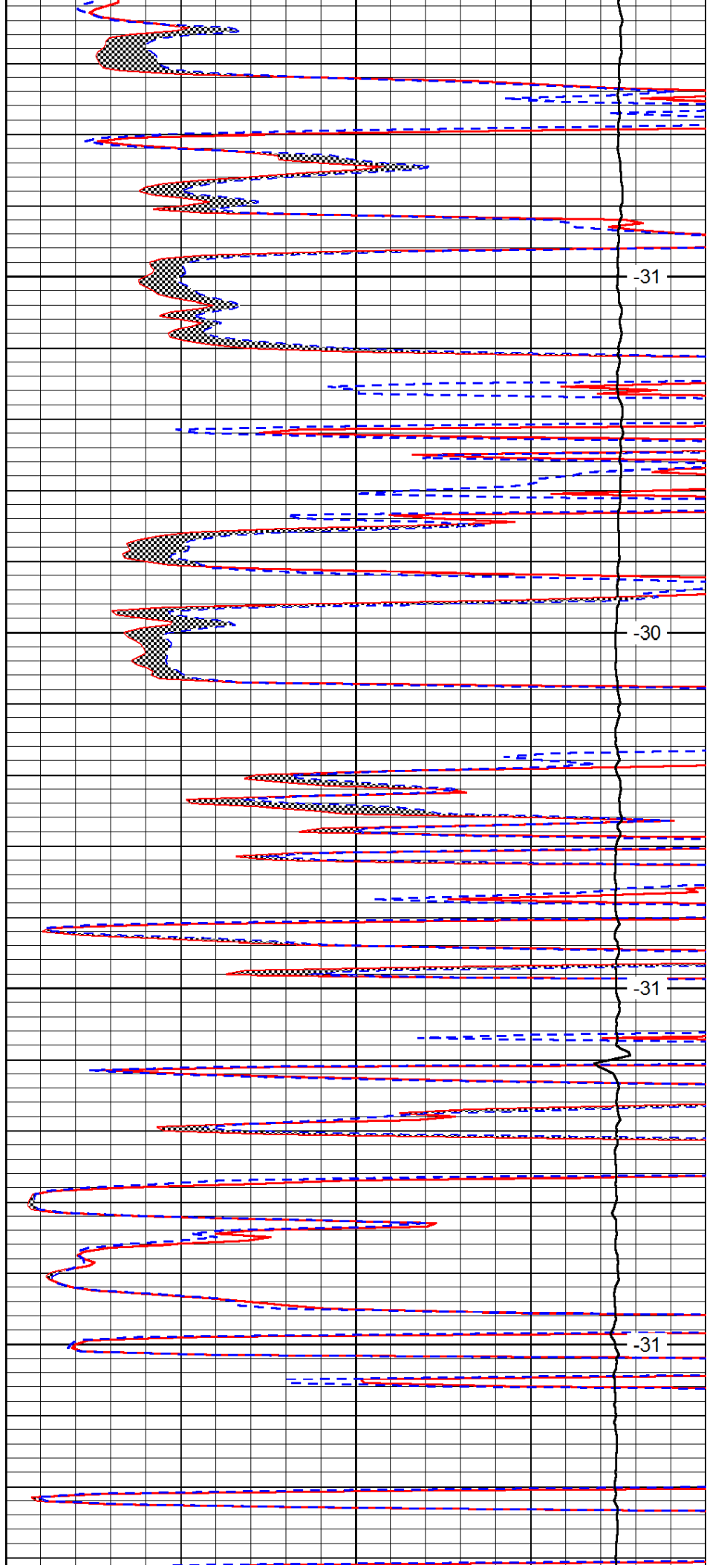


3350

3400

3450

3500

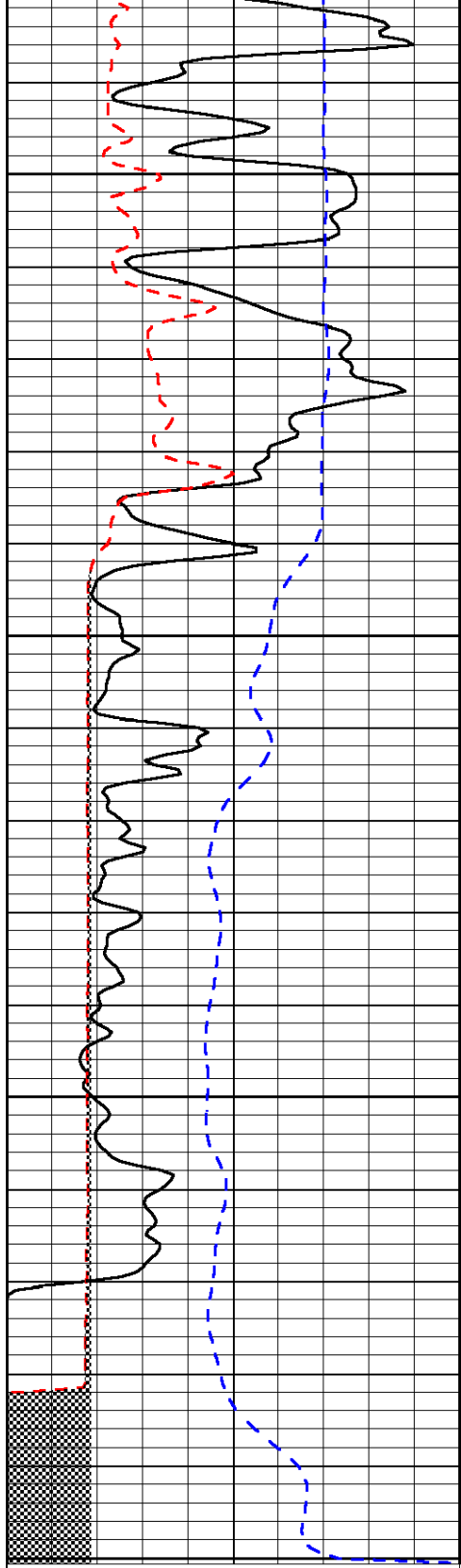


-31

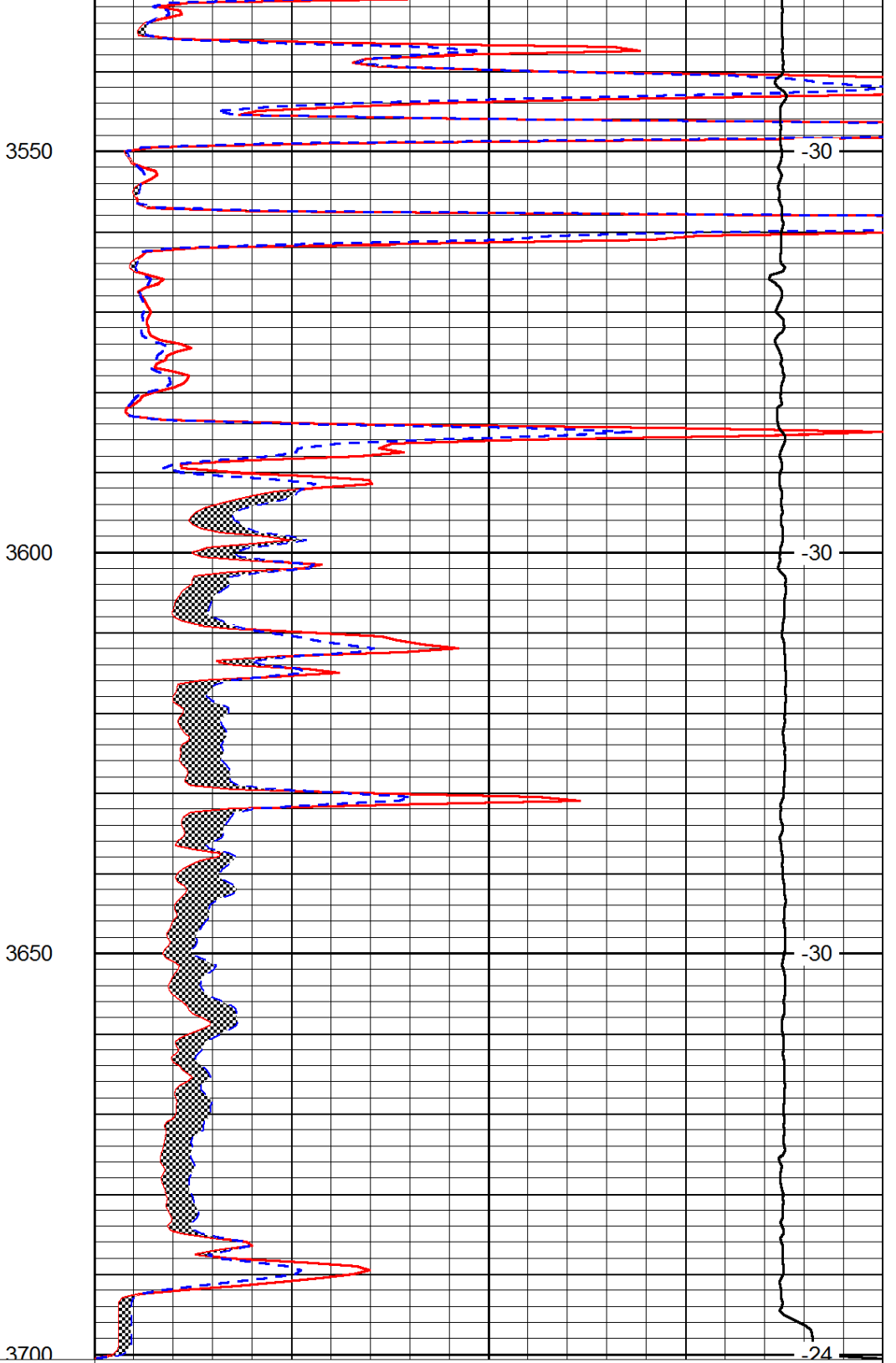
-30

-31

-31



0	Gamma Ray	150
6	Micro Log Caliper (GAPI)	16
-200	SP (mV)	0



0	Micro Inverse 1 X 1	40
0	Micro Normal 2''	40
15000	Line Weight	0

LSPD