



DIGITAL LOG (785) 625-3858

Borehole Compensated
Sonic Log

15-165-21,979-00-00

API No.

Company Black Tea Oil, LLC.
Well Mcantyre No.1
Field Otis-Albert
County Rush
State Kansas

Location SE NE SW SE
885' FSL & 1535' FEL

Sec: 27 Twp: 18 S Rge: 16 W

Other Services
CNL/CDL
MEL/DIL

Permanent Datum Ground Level Elevation 1976
Log Measured From Kelly Bushing 7 Ft. Above Perm. Datum
Drilling Measured From Kelly Bushing

Elevation
K.B. 1983
D.F.
G.L. 1976

Date	6/15/2012	
Run Number	Two	
Type Log	BHC Sonic	
Depth Driller	3694	
Depth Logger	3695	
Bottom Logged Interval	3684	
Top Logged Interval	1000	
Type Fluid In Hole	Chemical	
Salinity, PPM CL	9000	
Density	9.4	
Level	Full	
Max. Rec. Temp. F	113	
Operating Rig Time	4 Hours	
Equipment -- Location	15 Days	
Recorded By	D Kerr	
Witnessed By	Ted Pfau	

Borehole Record

Casing Record

Run No.	Bit	From	To	Size	Wgt.	From	To
1	12.25	00	1030	8.625	24#	00	1030
2	7.875	1030	3694				

<<< Fold Here >>>

All interpretations are opinions based on inferences from electrical or other measurements and we cannot and do not guarantee the accuracy or correctness of any interpretation, and we shall not, except in the case of gross or willful negligence on our part, be liable or responsible for any loss, costs, damages, or expenses incurred or sustained by anyone resulting from any interpretation made by any of our officers, agents or employees. These interpretations are also subject to our general terms and conditions set out in our current Price Schedule.

Comments

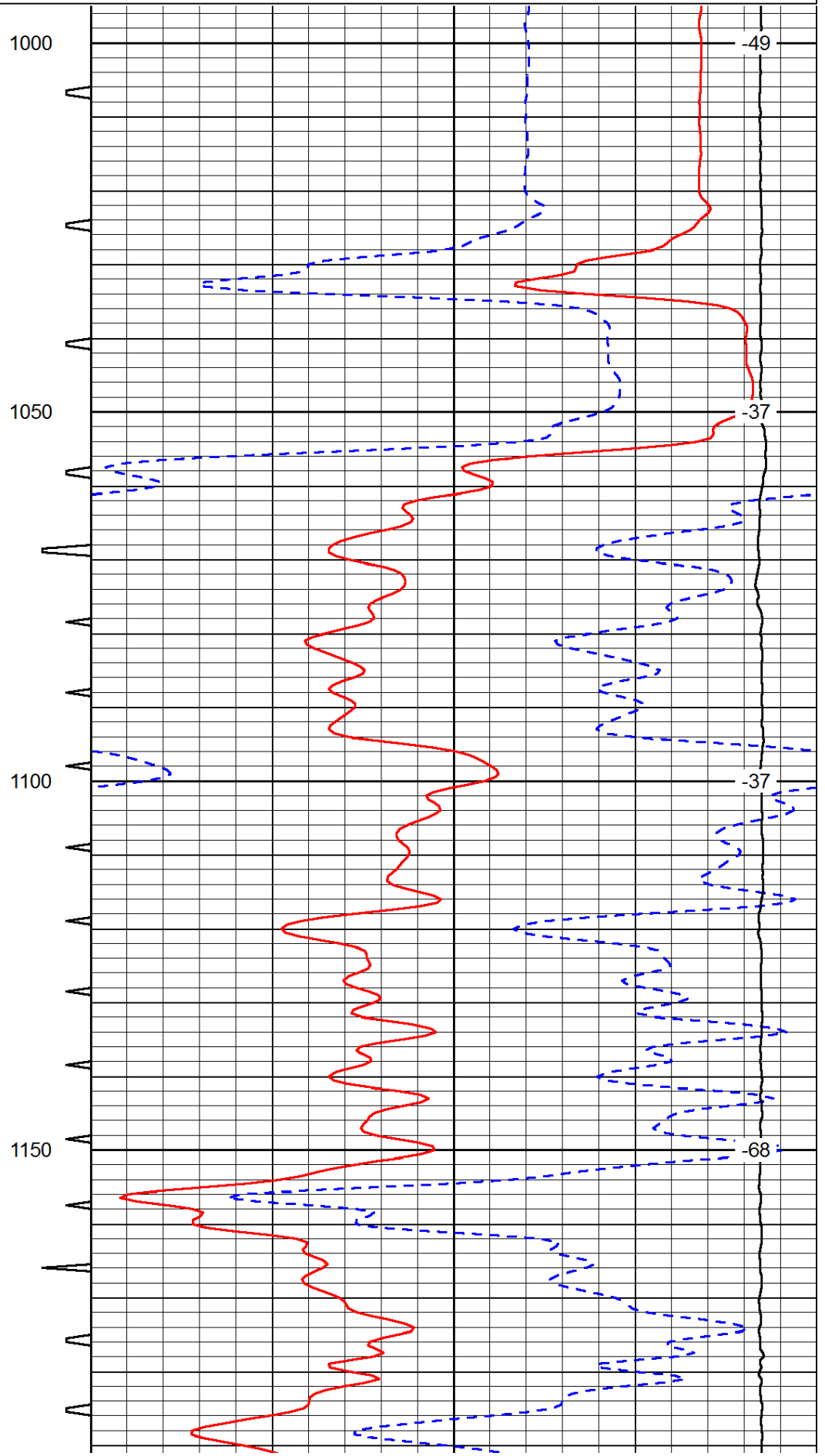
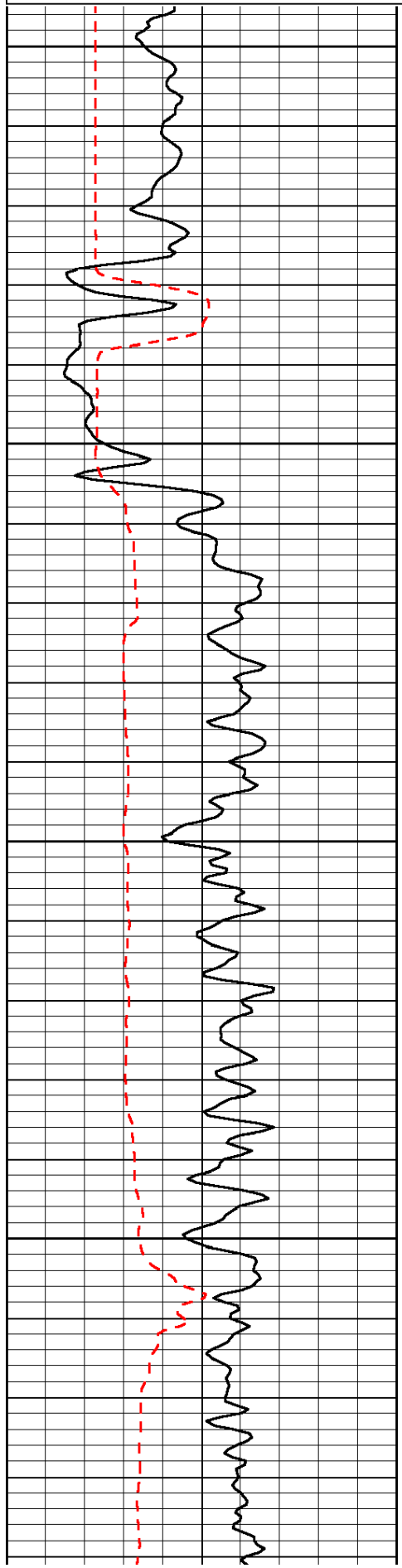
Thank you for using Log-Tech, Inc.
(785) 625-3858

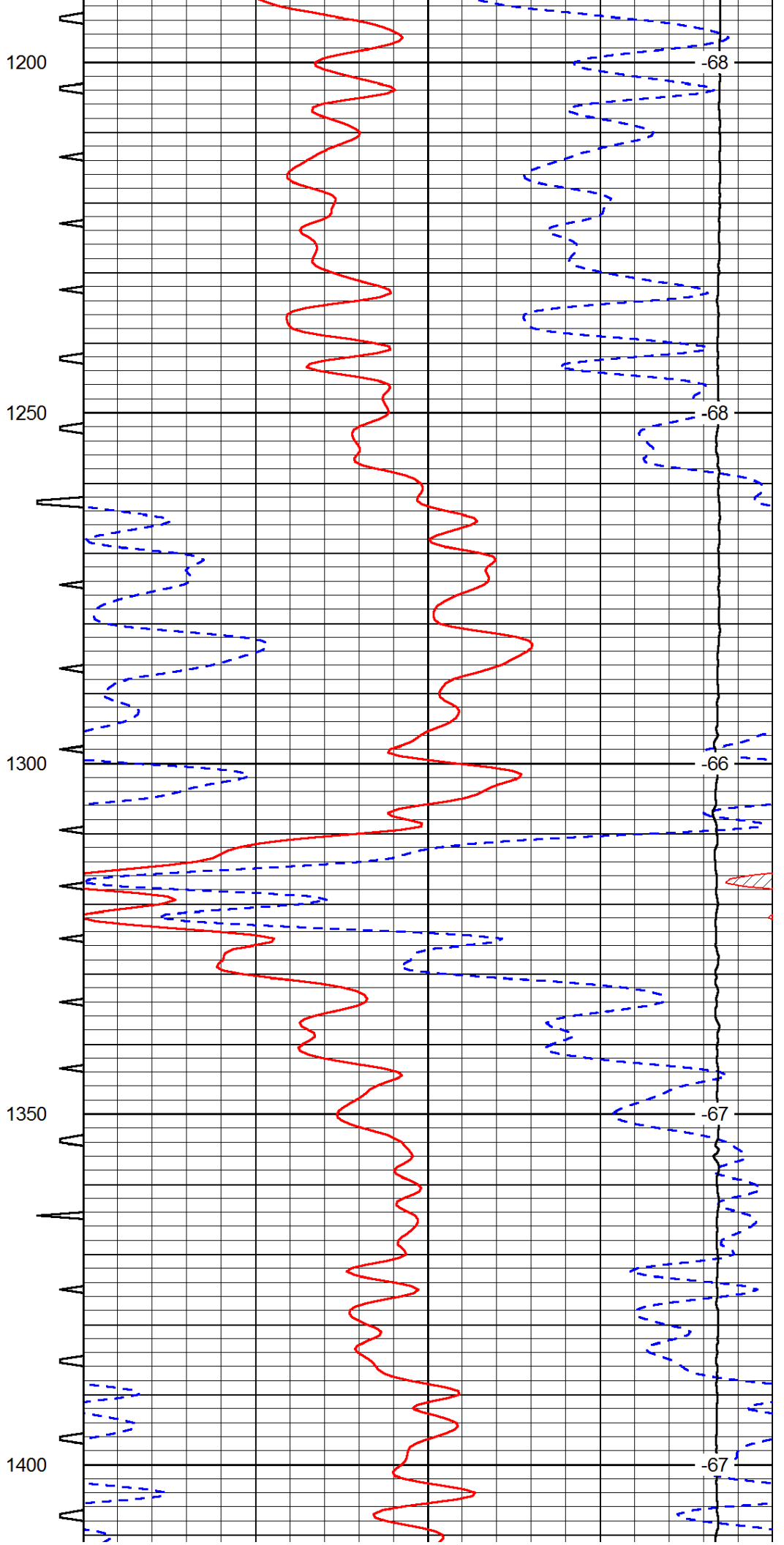
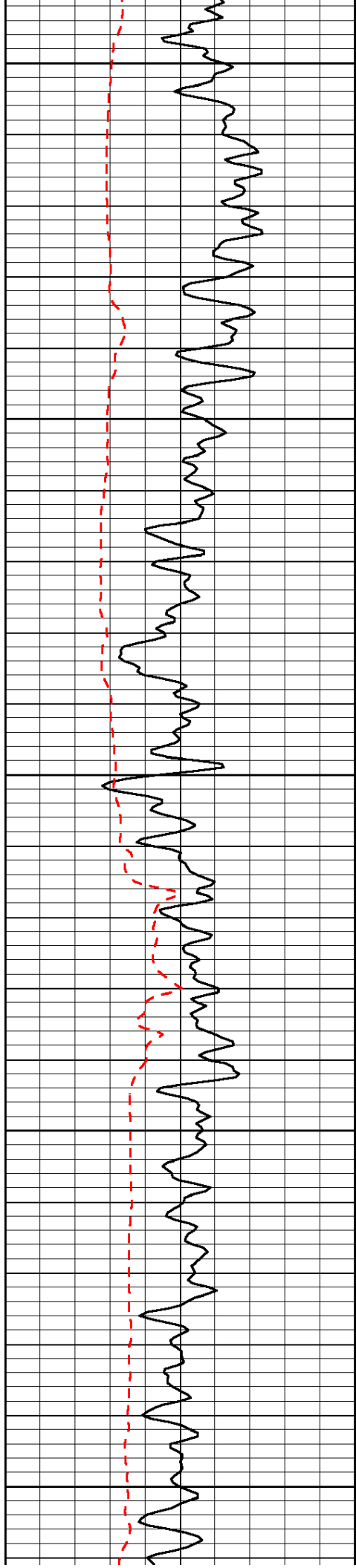
Albert KS, 3 1/2 west,
1 South, 1/2 West,
North Into

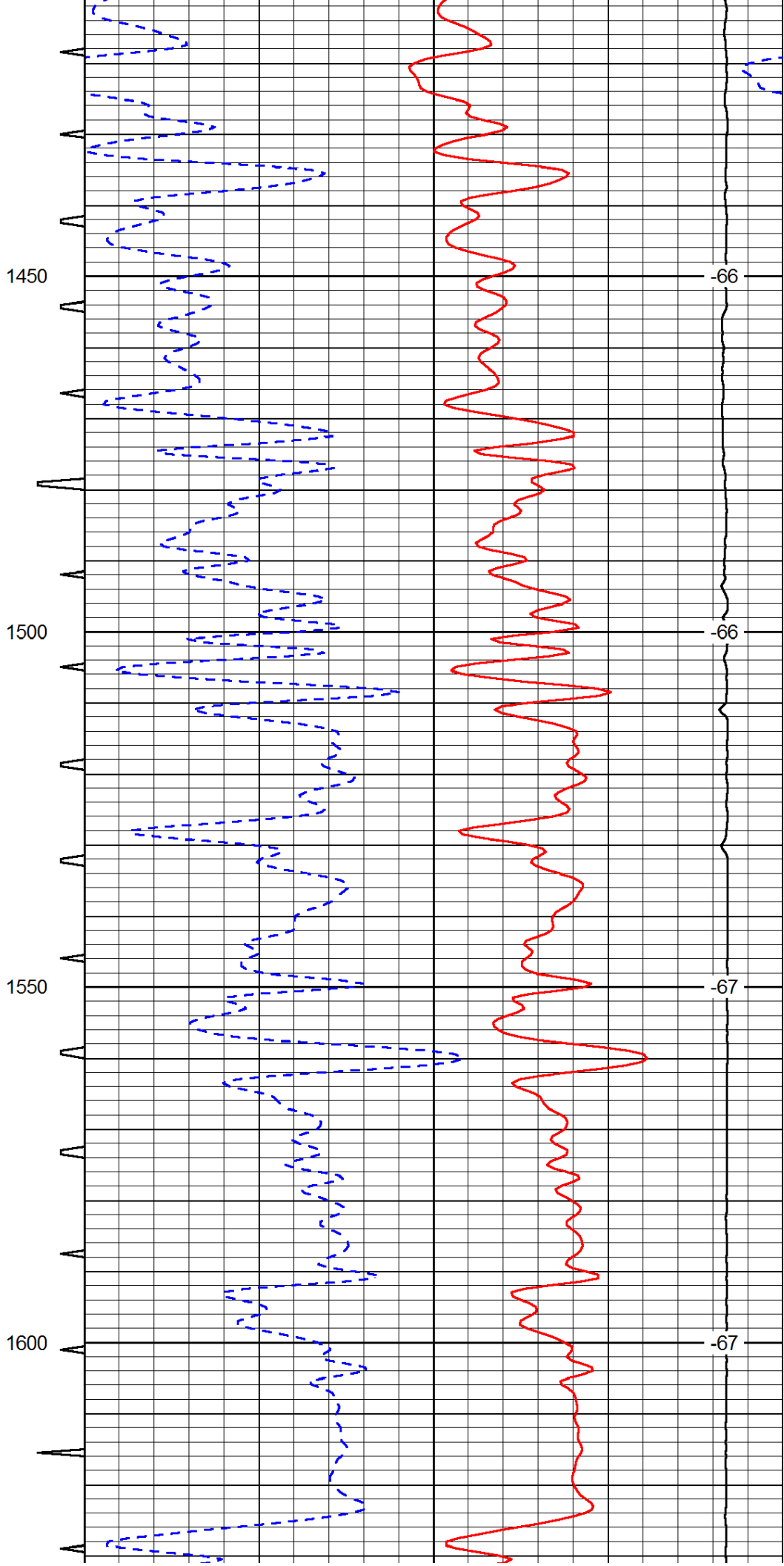
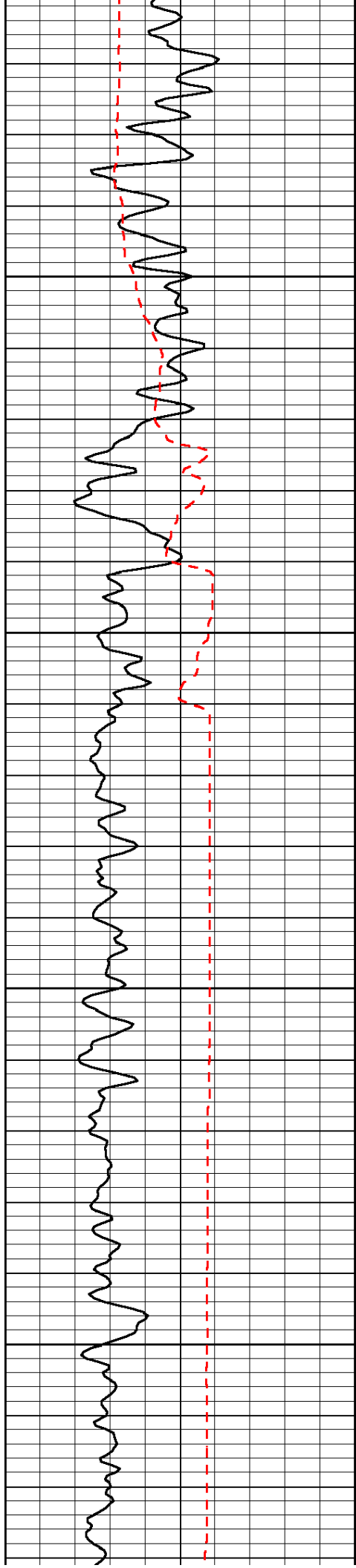
Database File: c:\warrior\data\black tea oil_mcantyre #1\blacktea_mcantyre_1hd.db
 Dataset Pathname: DIL/blktstk2
 Presentation Format: sonic
 Dataset Creation: Fri Jun 15 16:08:16 2012
 Charted by: Depth in Feet scaled 1:240

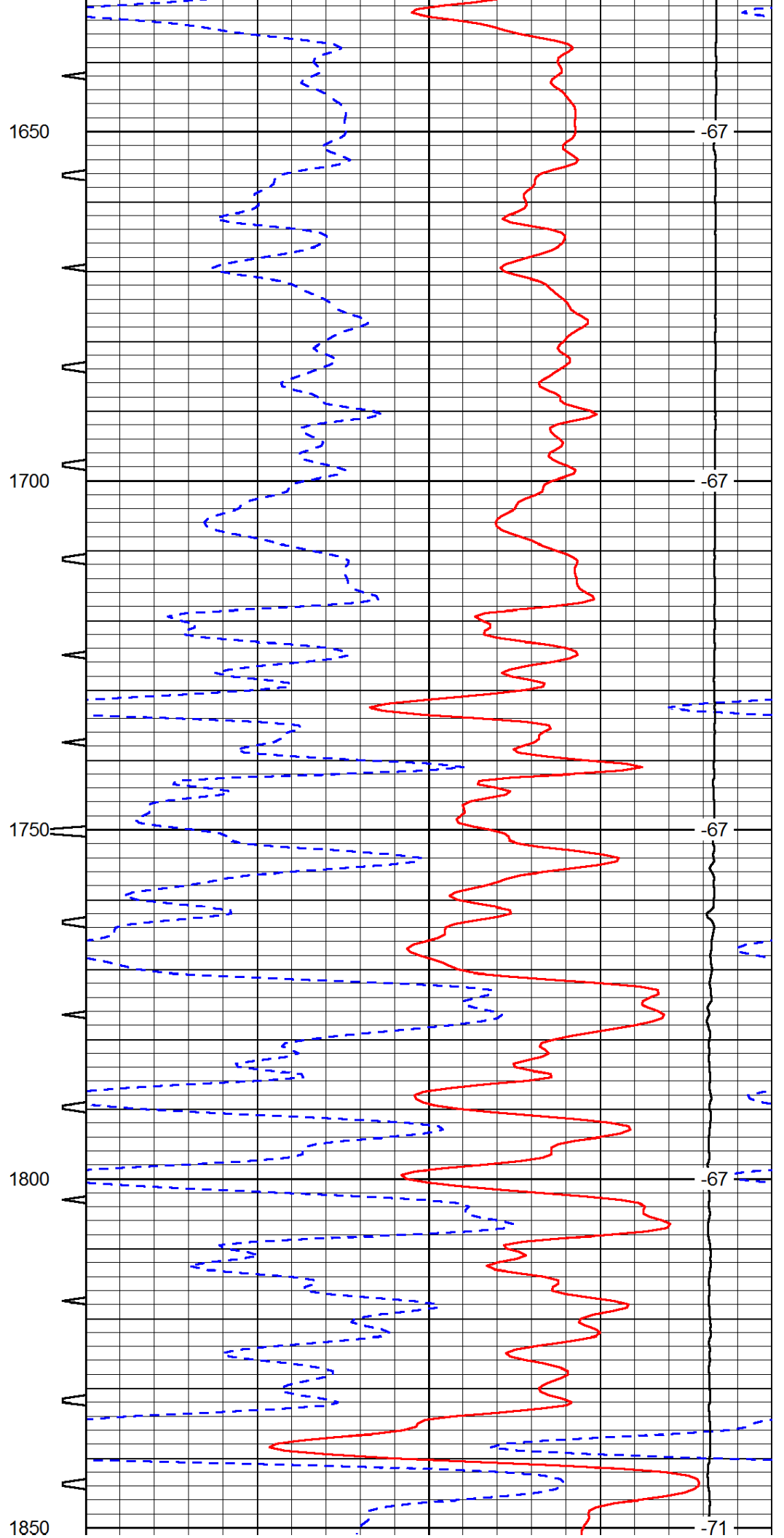
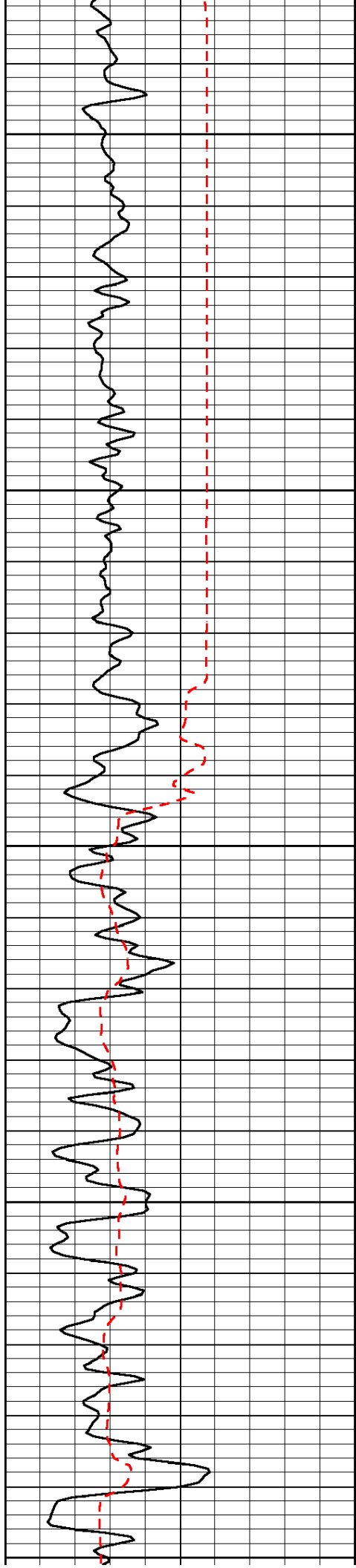
0	Gamma Ray	150	Sonic Int	140	Delta Time (usec/ft)	40
150	Gamma Ray	300	5	0	SPOR	-10
6	Caliper (GAPI)	16		15000	LTEN (lb)	0

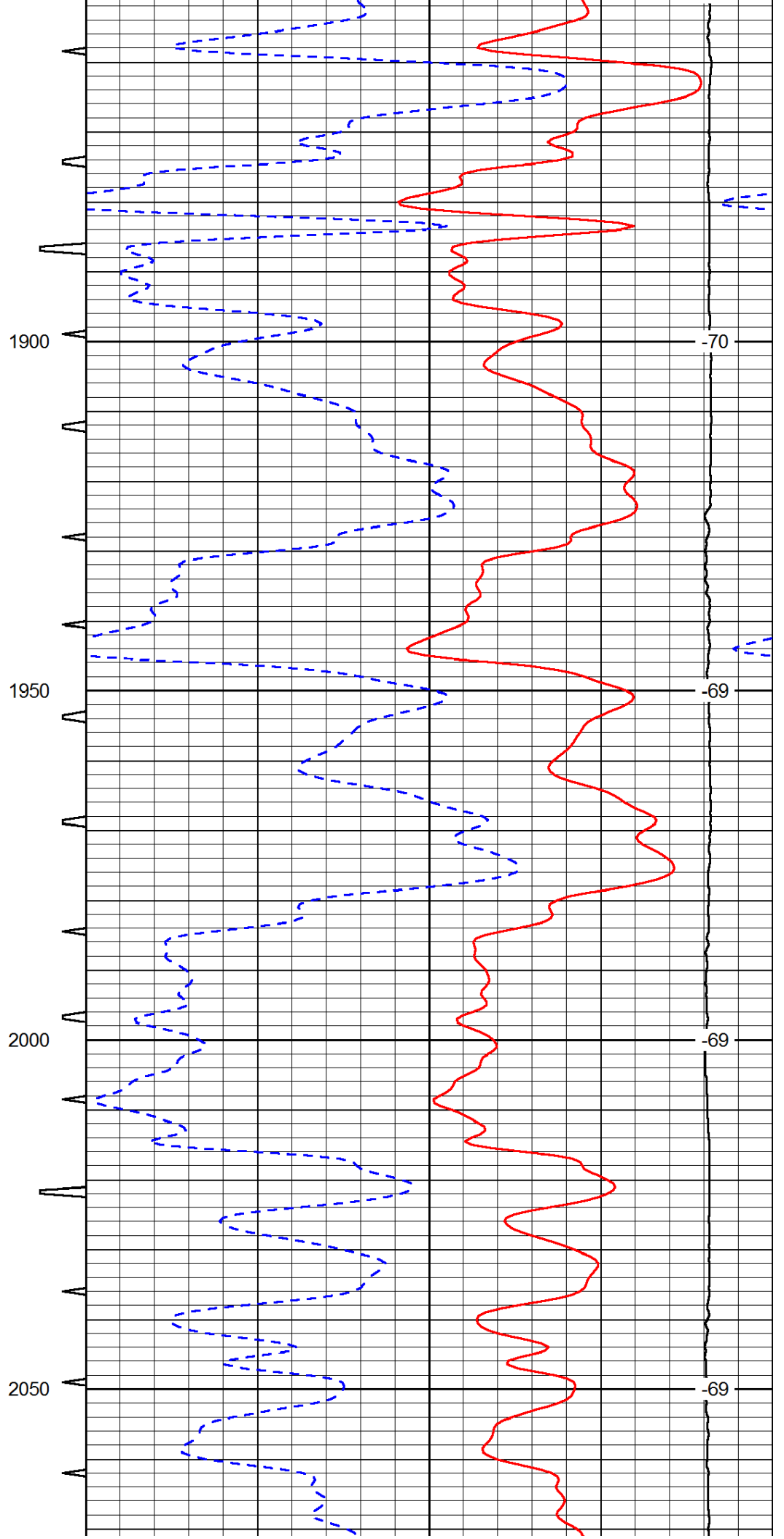
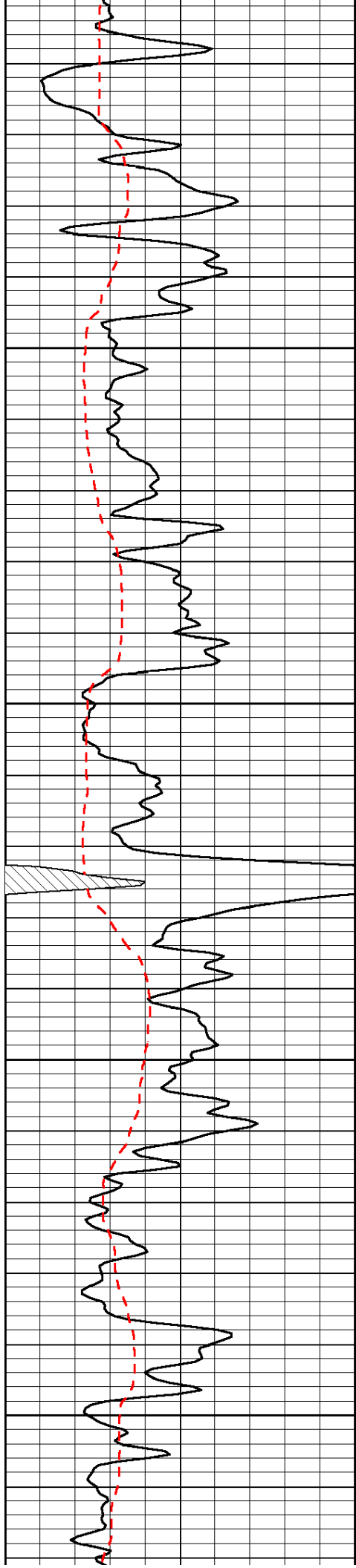
LSPD

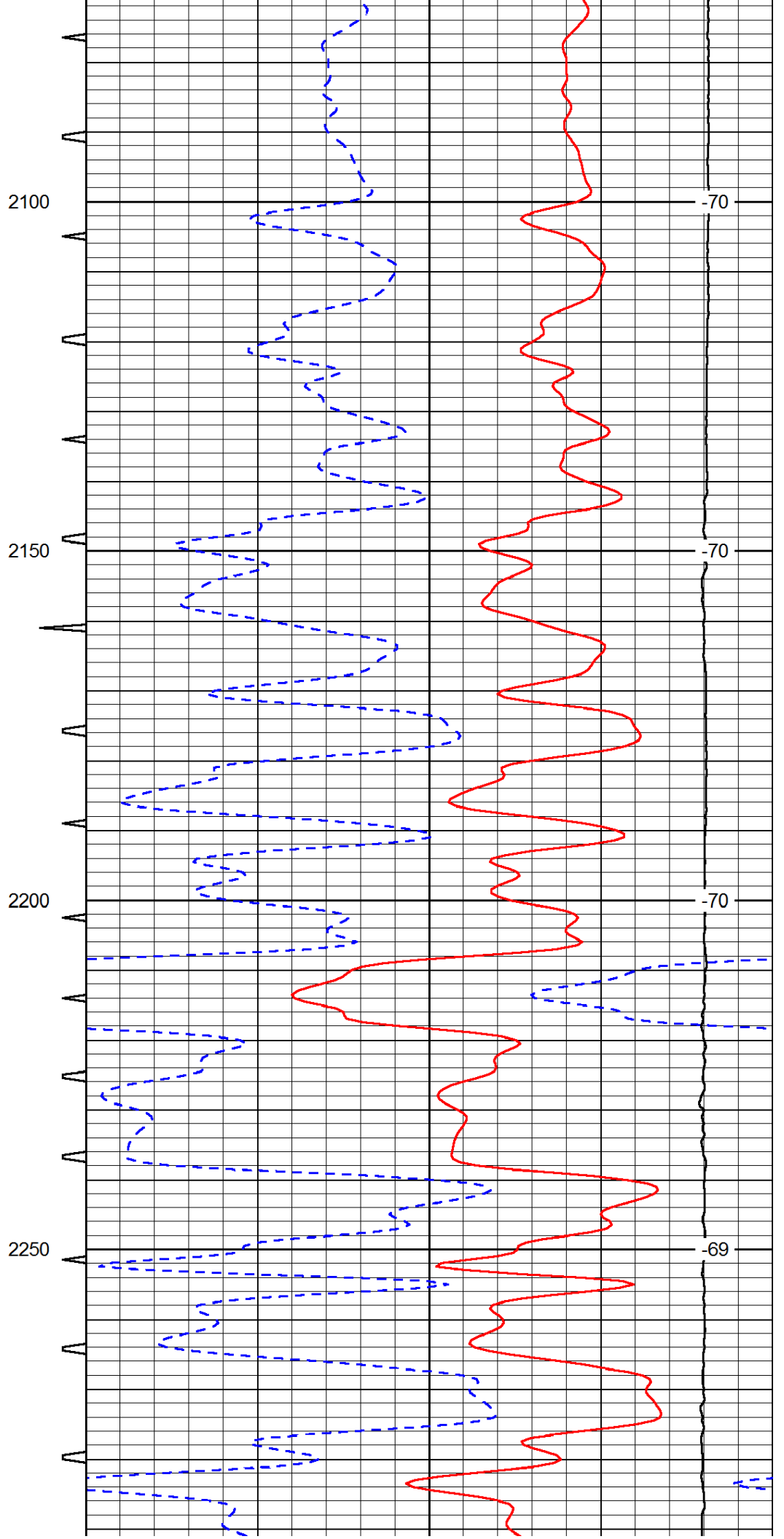
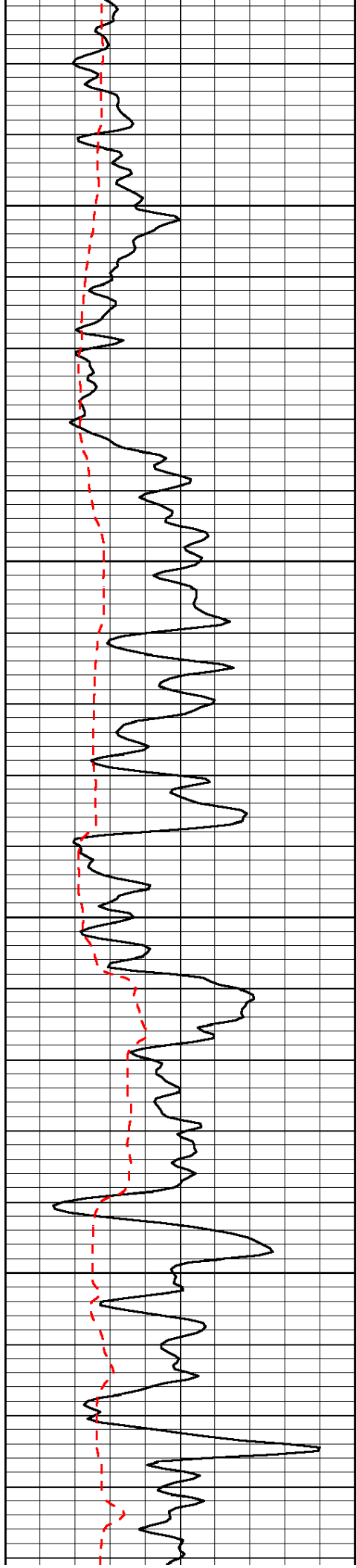


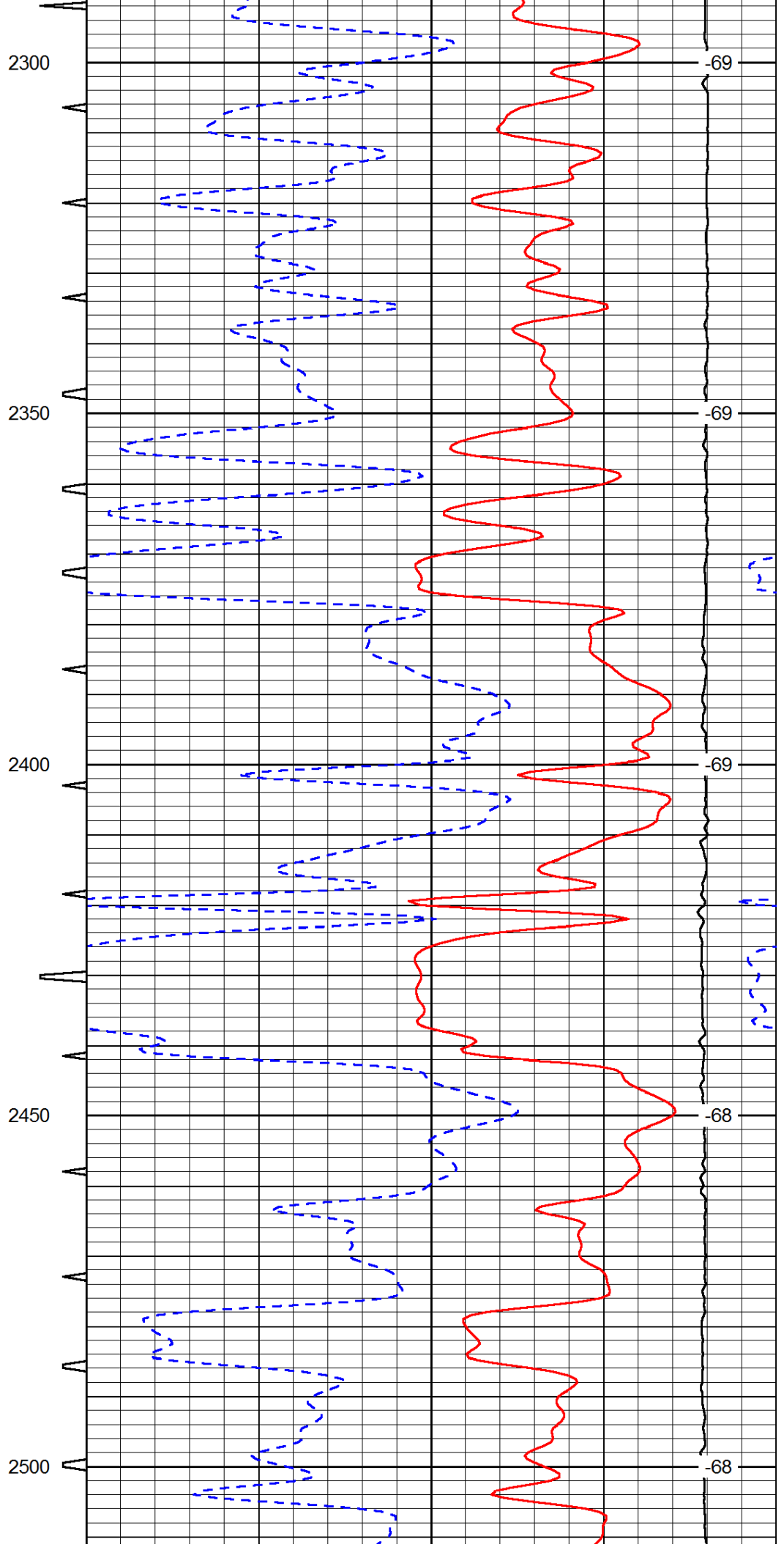
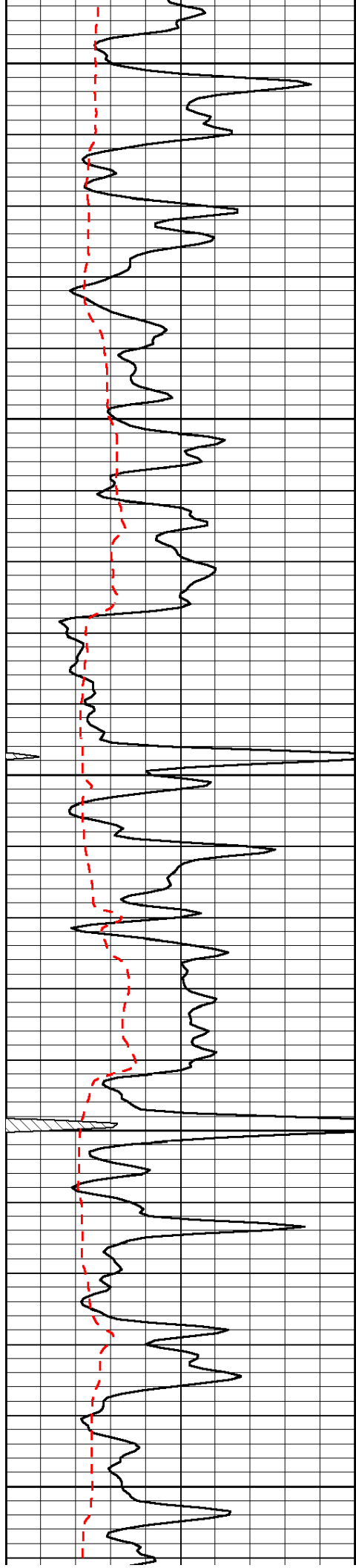


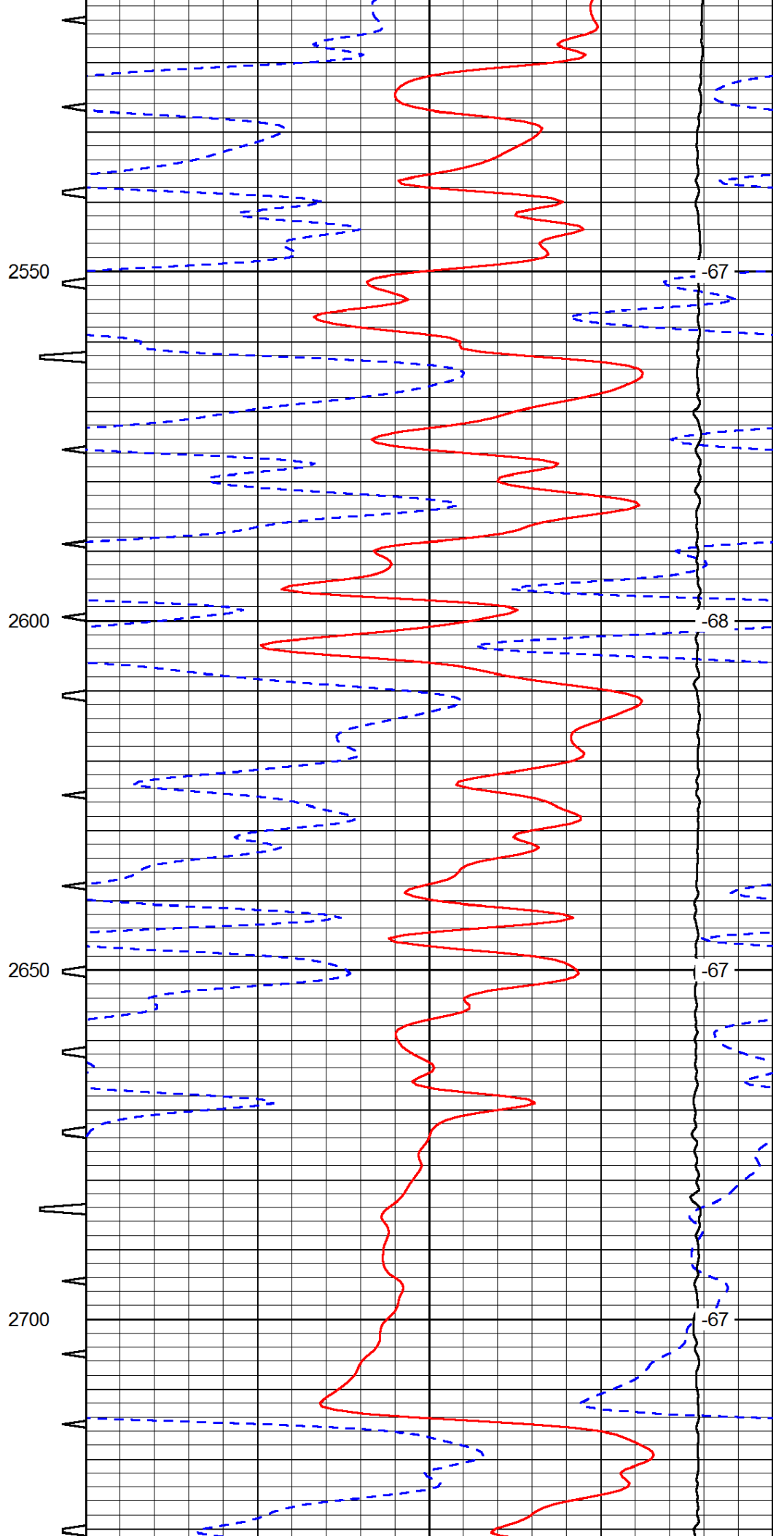
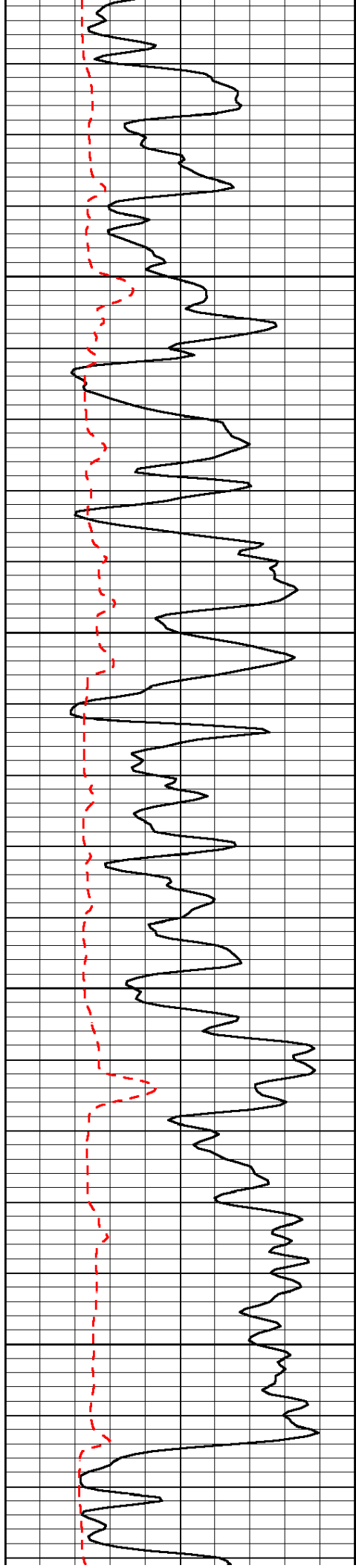


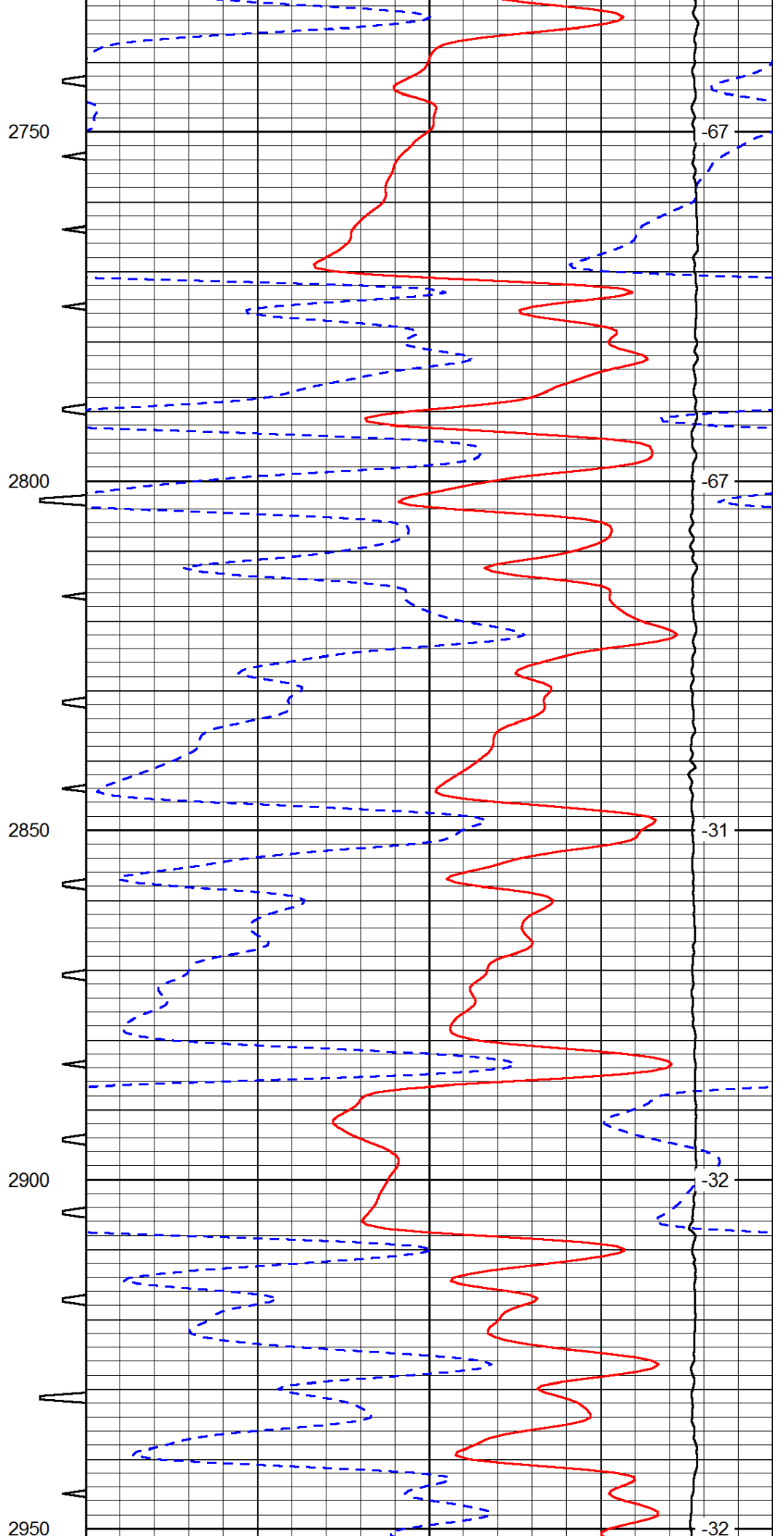
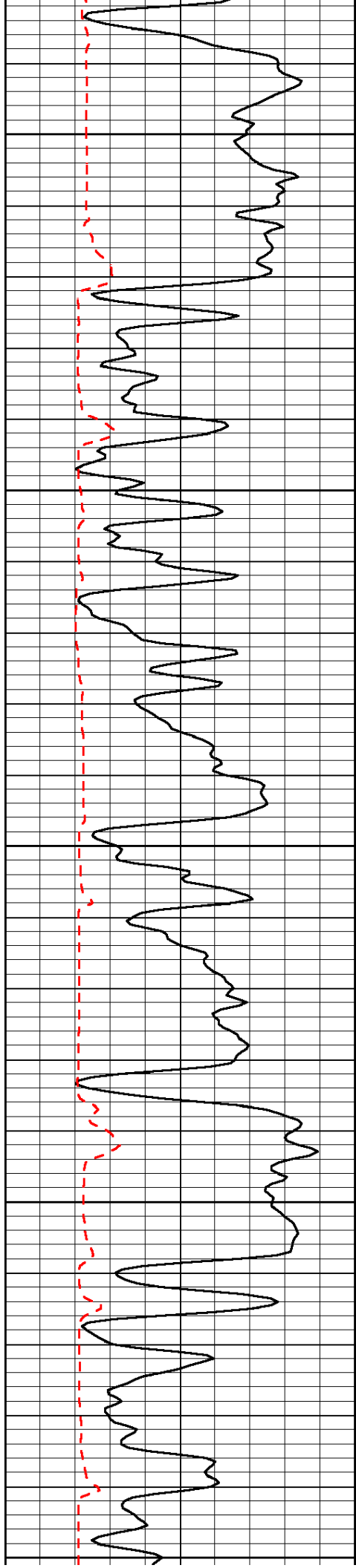


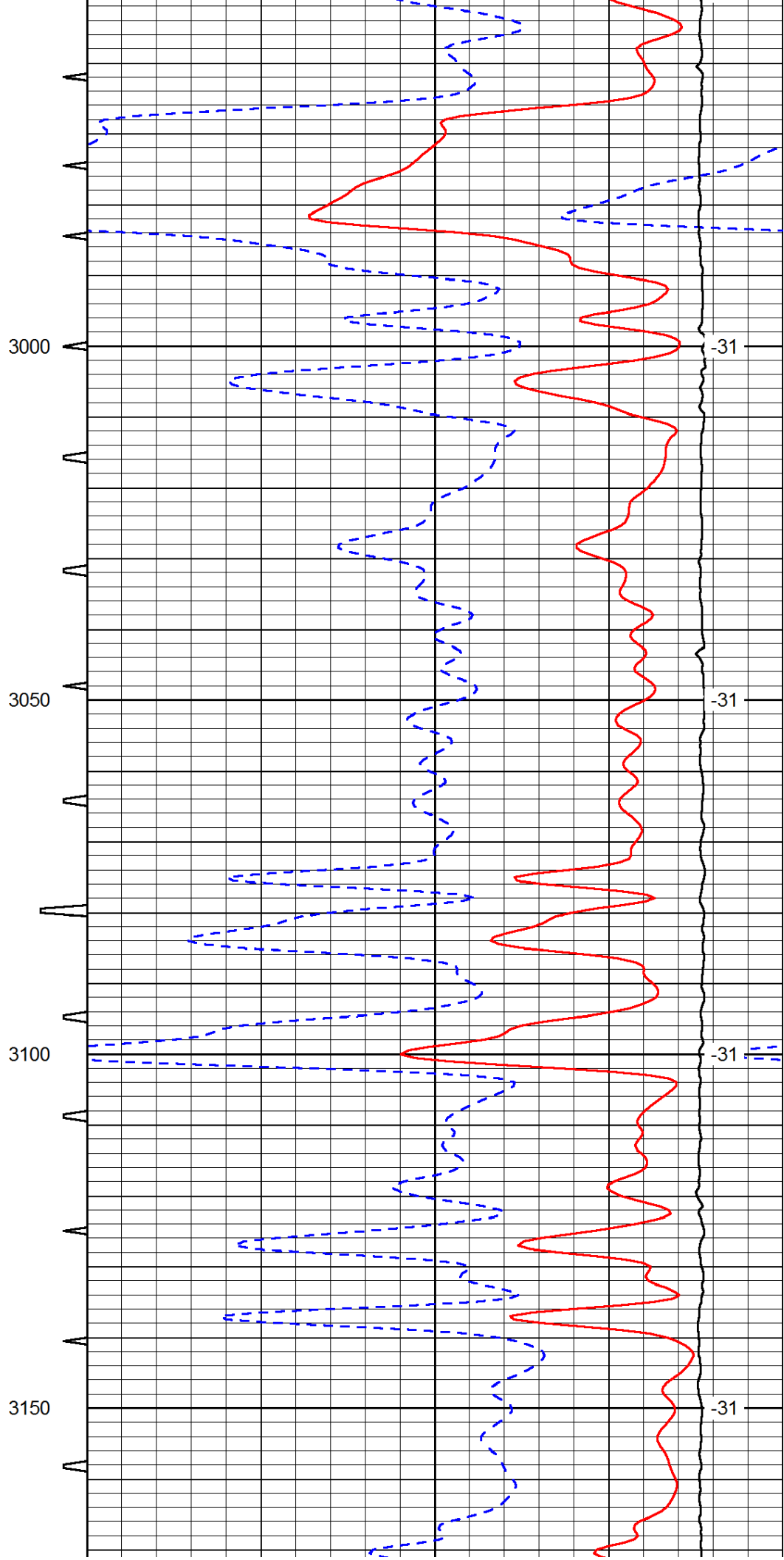
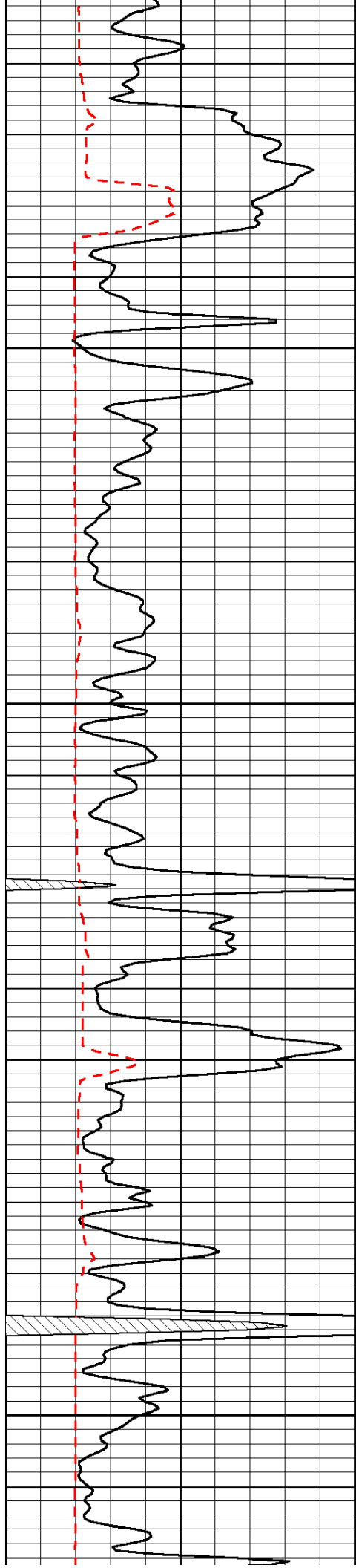


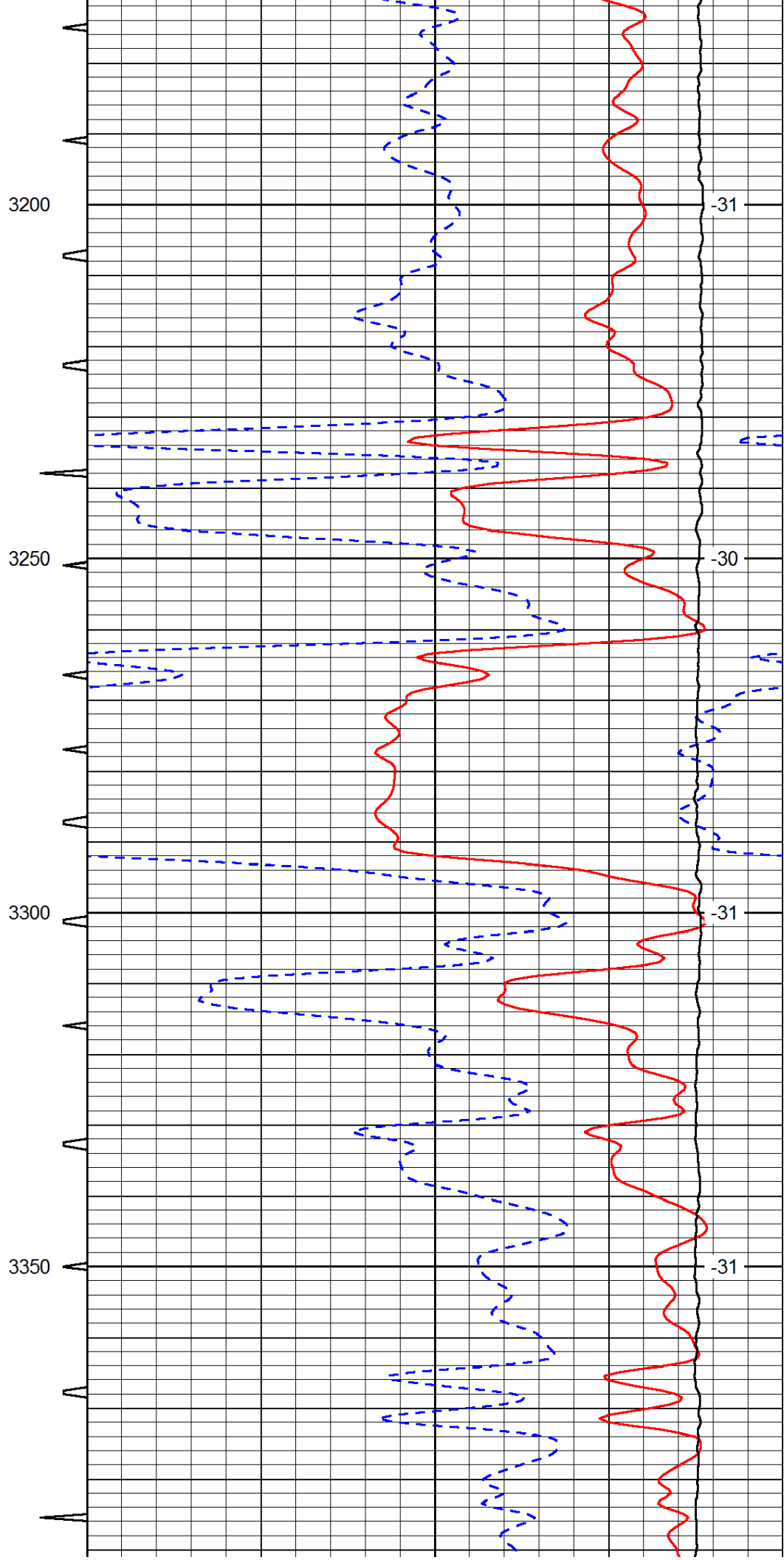
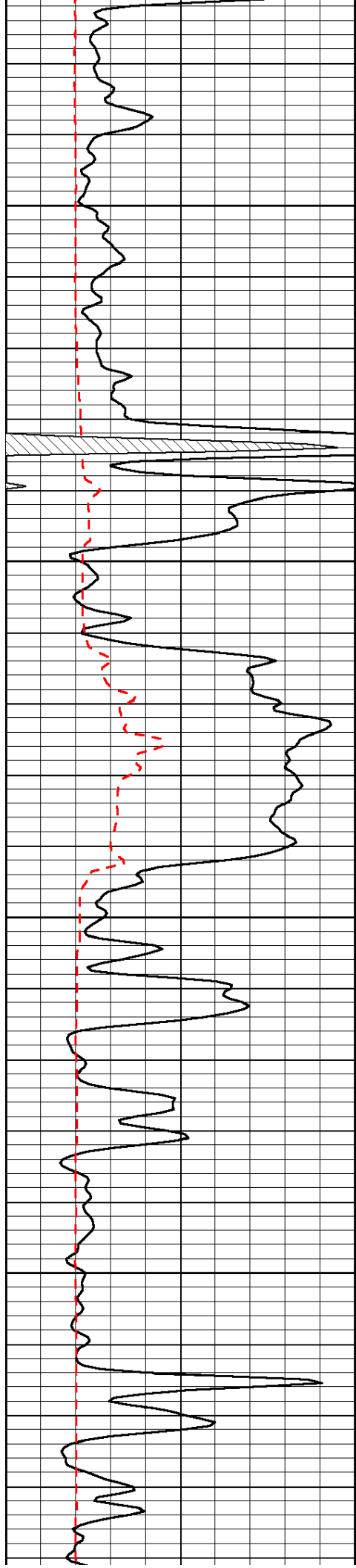


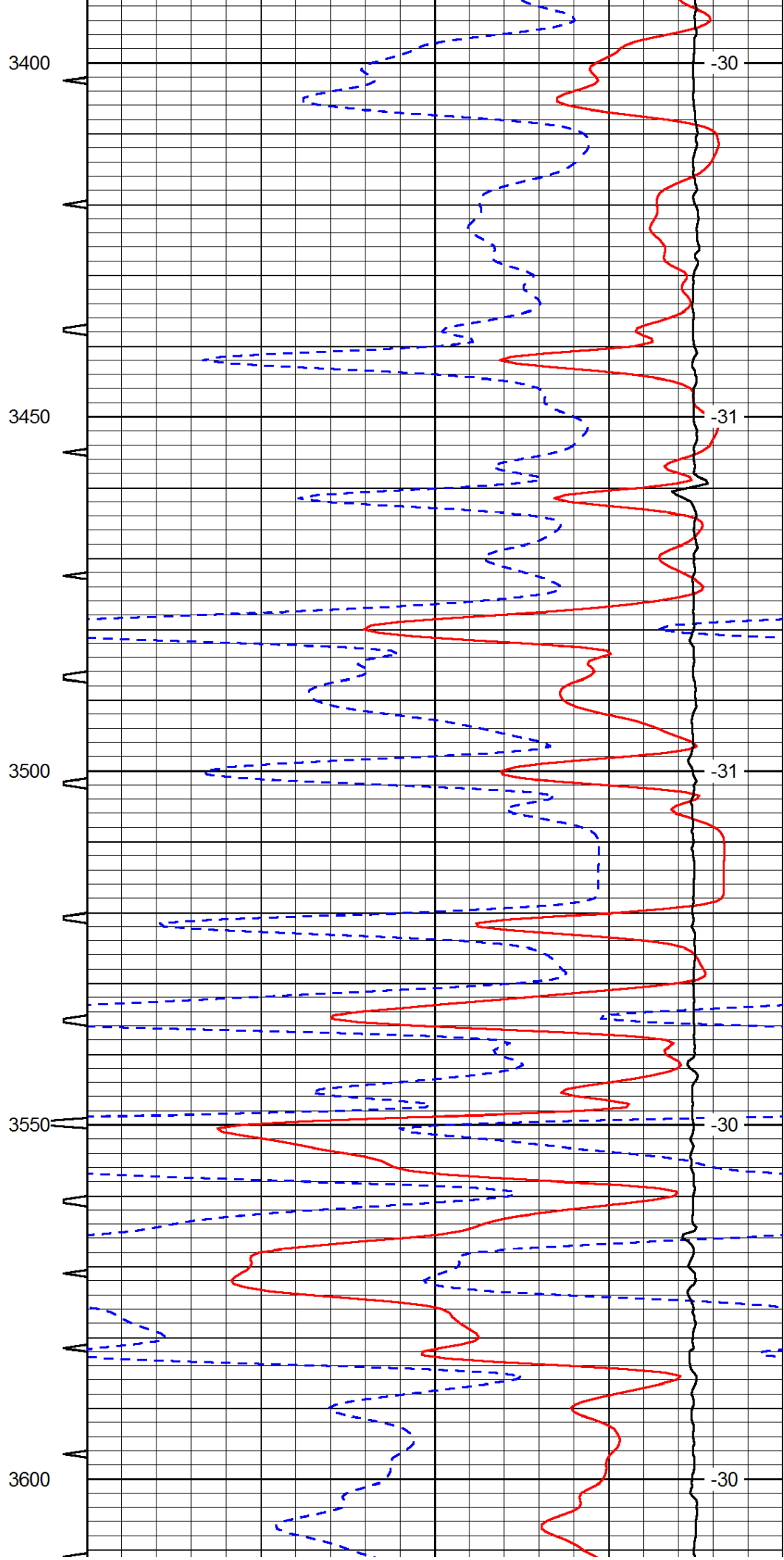
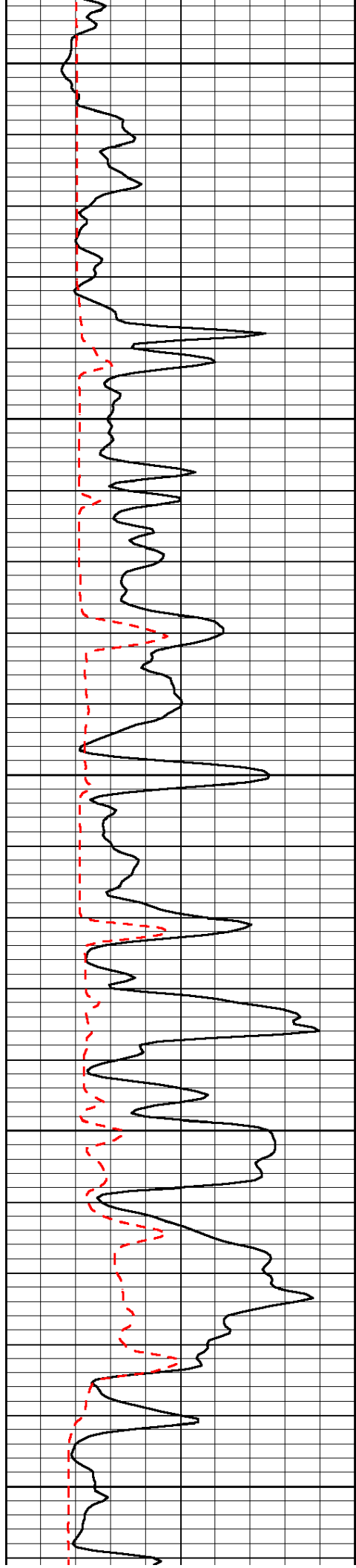


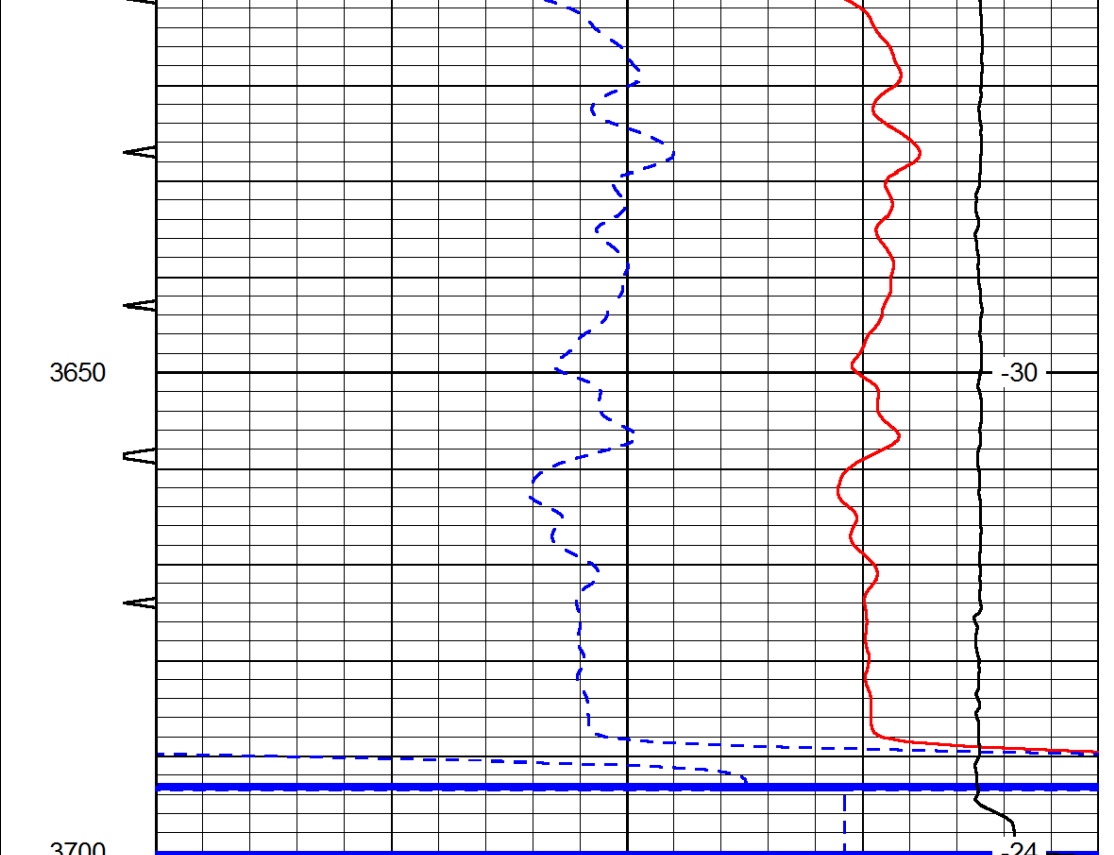
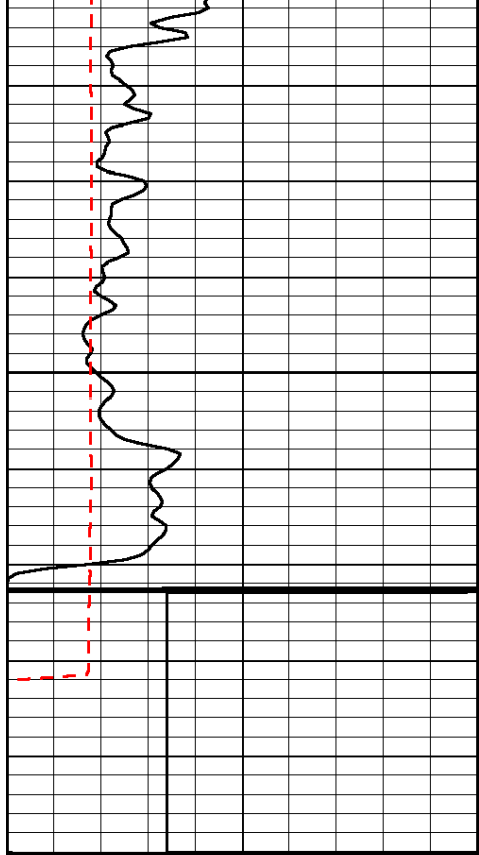












0	Gamma Ray	150	Sonic Int	140	Delta Time (usec/ft)	40
150	Gamma Ray	300	5	0	SPOR	-10
6	Caliper (GAPI)	16		15000	LTEN (lb)	0

LSPD