



(785) 625-3858

Sonic Cement
Bond Log

15-165-21,979-00-00

API No.

Company Black Tea Oil, LLC.
Well Mcantyre No. 1
Field Otis-Albert
County Rush
State Kansas

Location SE NE SW SE
885' FSL & 1535' FEL
Sec: 27 Twp: 18 S Rge: 16 W

Other Services

Permanent Datum Ground Level Elevation 1976
Log Measured From Kelly Bushing 7 Ft. Above Perm. Datum
Drilling Measured From Kelly Bushing

Elevation
K.B. 1983
D.F.
G.L. 1976

Run Number	One	
Date Survey	6-22-2012	
Date Cementing	6-16-2012	
Type Cementing Operation	Primary	
Depth Driller	3694	
Depth Logger	3632	
Logged Interval	3631 to 2400	to
Casing Driller	5.5 @ TD	@
Float Collar -- D.V. Tool	////	////
Squeeze Depth	////	
Amount & Type Cement	////	
Amount & Type Admix	////	
Type Fluid In Hole	Water	
Fluid Level	Full	
Salinity PPM CL	////	
Weight lb/gal -- Vis.	////	////
Approx. Logged Cement Top	2606	
Calculated Cement Top	////	
Max. Hole Temperature	113	
Tool No.	R-1	
Spacing Recorded	3-5	
Equipment -- Location	72 Hays	
Recorded By	J Vaughn	D Walker
Witnessed By	Chris Leiker	

<<< Fold Here >>>

All interpretations are opinions based on inferences from electrical or other measurements and we cannot and do not guarantee the accuracy or correctness of any interpretation, and we shall not, except in the case of gross or willful negligence on our part, be liable or responsible for any loss, costs, damages, or expenses incurred or sustained by anyone resulting from any interpretation made by any of our officers, agents or employees. These interpretations are also subject to our general terms and conditions set out in our current Price Schedule.

Comments

Thank you for using LOG TECH, INC. 785.625.3858

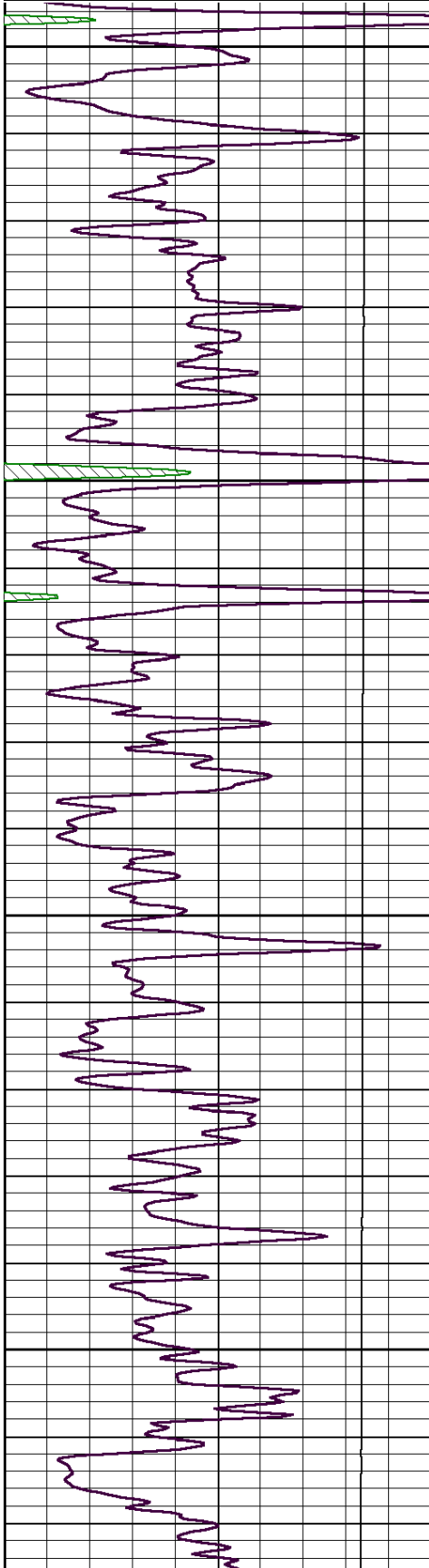
Albert KS, 3 1/2 west to 380th Rd
1 South To Rd R,
1/2 West, North Into



Main Pass

Database File: black tea.db
 Dataset Pathname: pass4
 Presentation Format: cbldr
 Dataset Creation: Fri Jun 22 11:21:06 2012 by Log SCH 111116
 Charted by: Depth in Feet scaled 1:240

0	Gamma Ray	150	amp3ft	8	Casing Collars	-1	200	wvf5ft	1200
			(mV)	0	Amplified Amplitude (mV)	100			
			-100	10	Pipe Amplitude (mV)	20			



2400

2450

2500

2550

