



Pioneer Energy Services

# Microresistivity Log

15-109-21114-00-00

API No.

Company **New Gulf Operating, LLC**

Well **Byron #1-31**

Field

County **Logan**

State

**Kansas**

Location

**1295' FSL & 1572' FEL**

Other Services  
CNL/CDL  
DIL

Sec: **31** Twp: **14S** Rge: **34W**

Permanent Datum **Ground Level** Elevation **3019**

Log Measured From **Kelly Bushing** 10 Ft. Above Perm. Datum

Elevation  
K.B. 3029  
D.F.  
G.L. 3019

Drilling Measured From **Kelly Bushing**

Date **8/20/2012**

Run Number **Two**

Depth Driller **4785**

Depth Logger **4784**

Bottom Logged Interval **4783**

Top Log Interval **3450**

Casing Driller **8.625 @ 262**

Casing Logger **260**

Bit Size **7.875**

Type Fluid in Hole **Chemical**

Salinity,ppm CL **8000**

Density / Viscosity **9.3 58**

pH / Fluid Loss **10.0 10.4**

Source of Sample **Flowline**

Rm @ Meas. Temp **0.80 @ 75**

Rmf @ Meas. Temp **0.60 @ 75**

Rmc @ Meas. Temp **1.08 @ 75**

Source of Rmf / Rmc **Charts**

Rm @ BHT **0.48 @ 126**

Operating Rig Time **5 Hours**

Max Rec. Temp. F **126**

Equipment Number **91**

Location **Hays**

Recorded By **D. Schmidt**

Witnessed By **John Goldsmith**

<<< Fold Here >>>

All interpretations are opinions based on inferences from electrical or other measurements and we cannot and do not guarantee the accuracy or correctness of any interpretation, and we shall not, except in the case of gross or willful negligence on our part, be liable or responsible for any loss, costs, damages, or expenses incurred or sustained by anyone resulting from any interpretation made by any of our officers, agents or employees. These interpretations are also subject to our general terms and conditions set out in our current Price Schedule.

### Comments

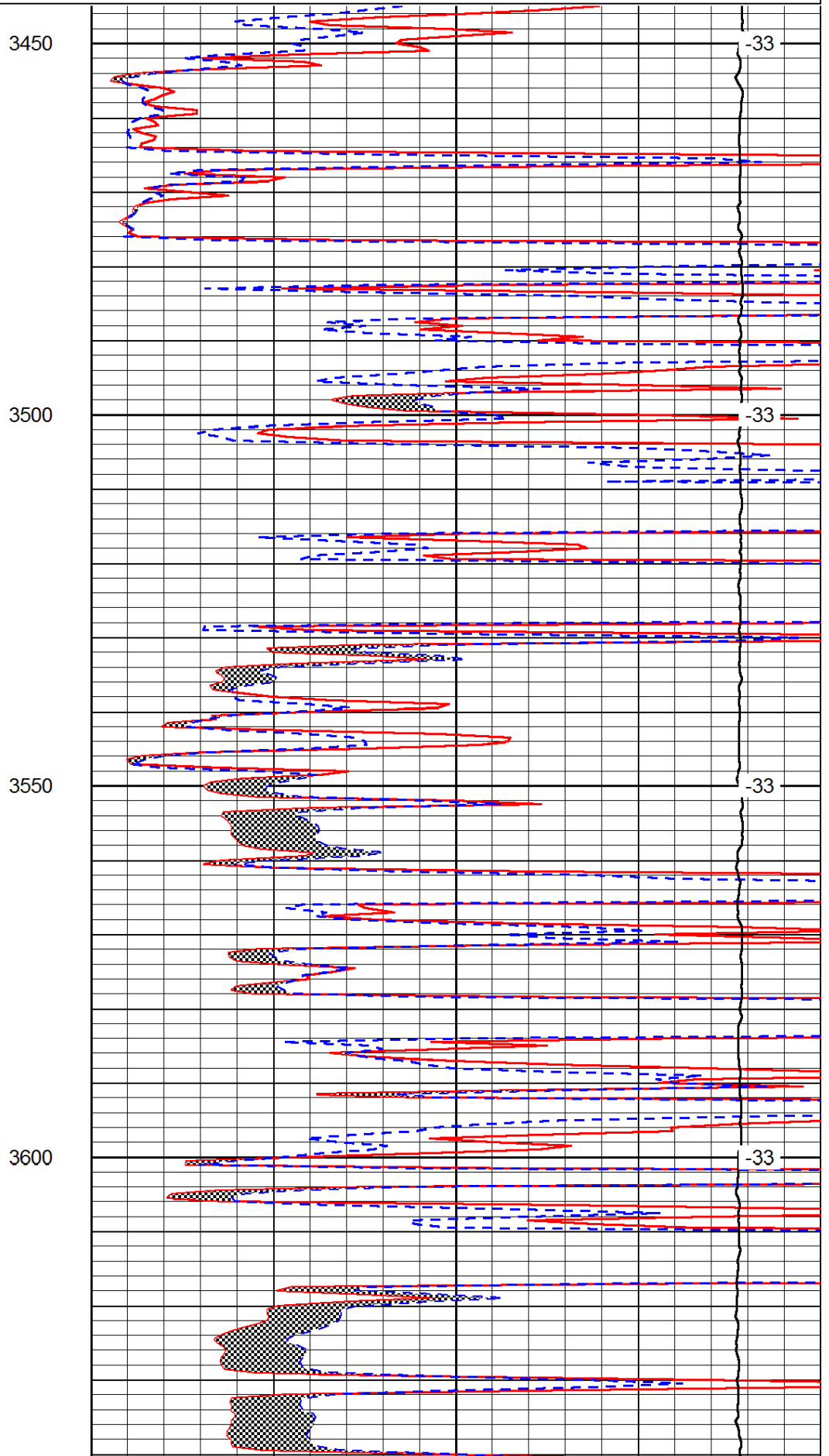
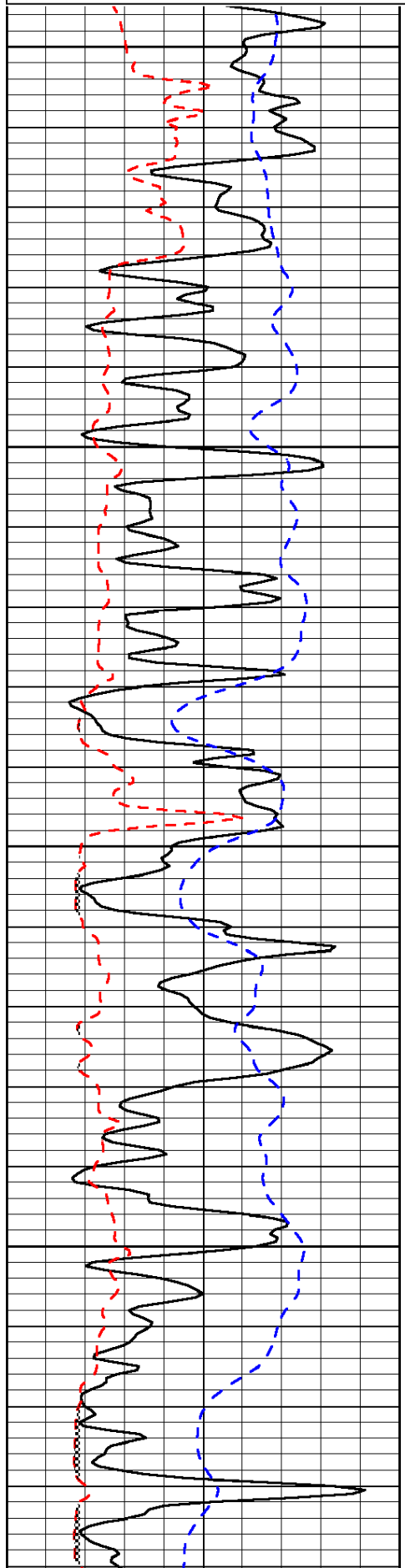
Thank you for using Pioneer Energy Services  
[www.pioneerenergy.com](http://www.pioneerenergy.com)  
 785 625 3858  
 Russell Springs,  
 1 East to Rd 270, 8 /14 South to Gold Road,  
 2 1/2 East to location

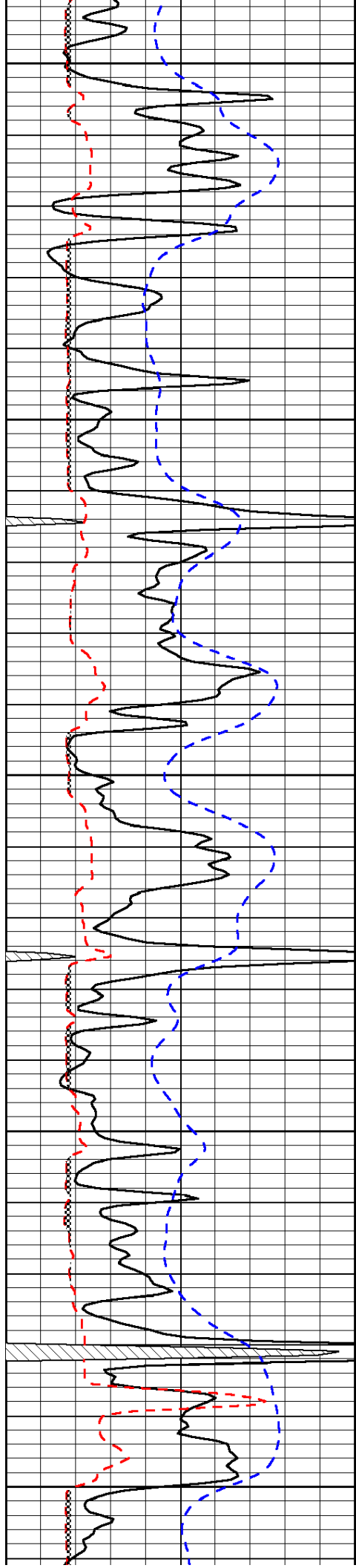
Database File: c:\warrior\data\new gulf\_byron #1-31\newgulf\_082012hd.db  
 Dataset Pathname: dil/ngstack  
 Presentation Format: micro  
 Dataset Creation: Mon Aug 20 16:23:12 2012  
 Charted by: Depth in Feet scaled 1:240

0	Gamma Ray	150
6	Micro Log Caliper (GAPI)	16
-200	SP (mV)	0

0	Micro Inverse 1 X 1	40
0	Micro Normal 2"	40
15000	Line Weight	0

LSPD





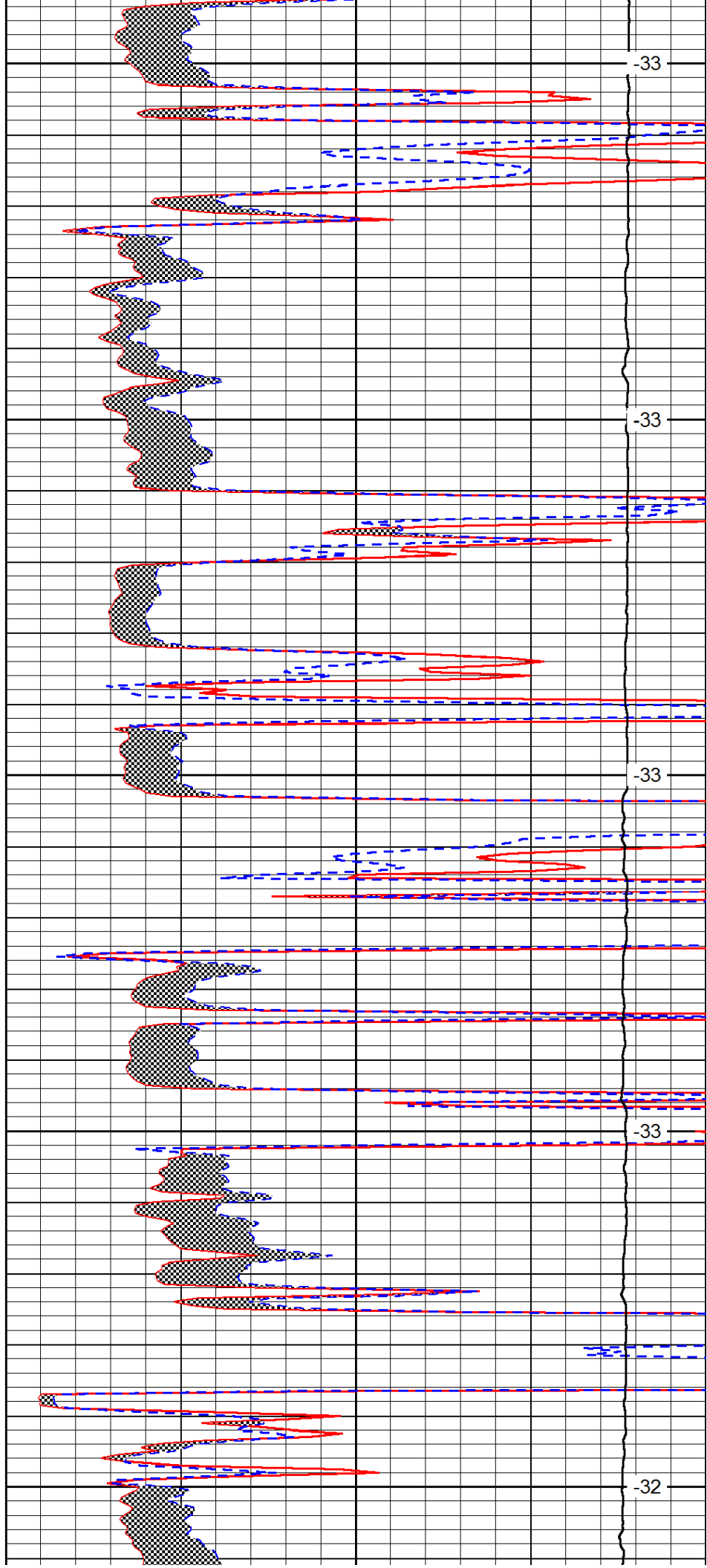
3650

3700

3750

3800

3850



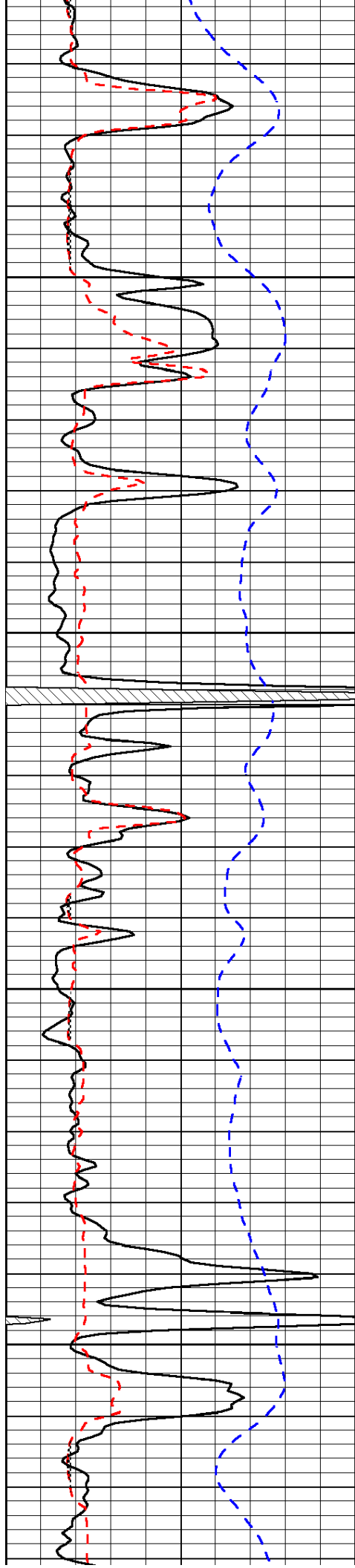
-33

-33

-33

-33

-32

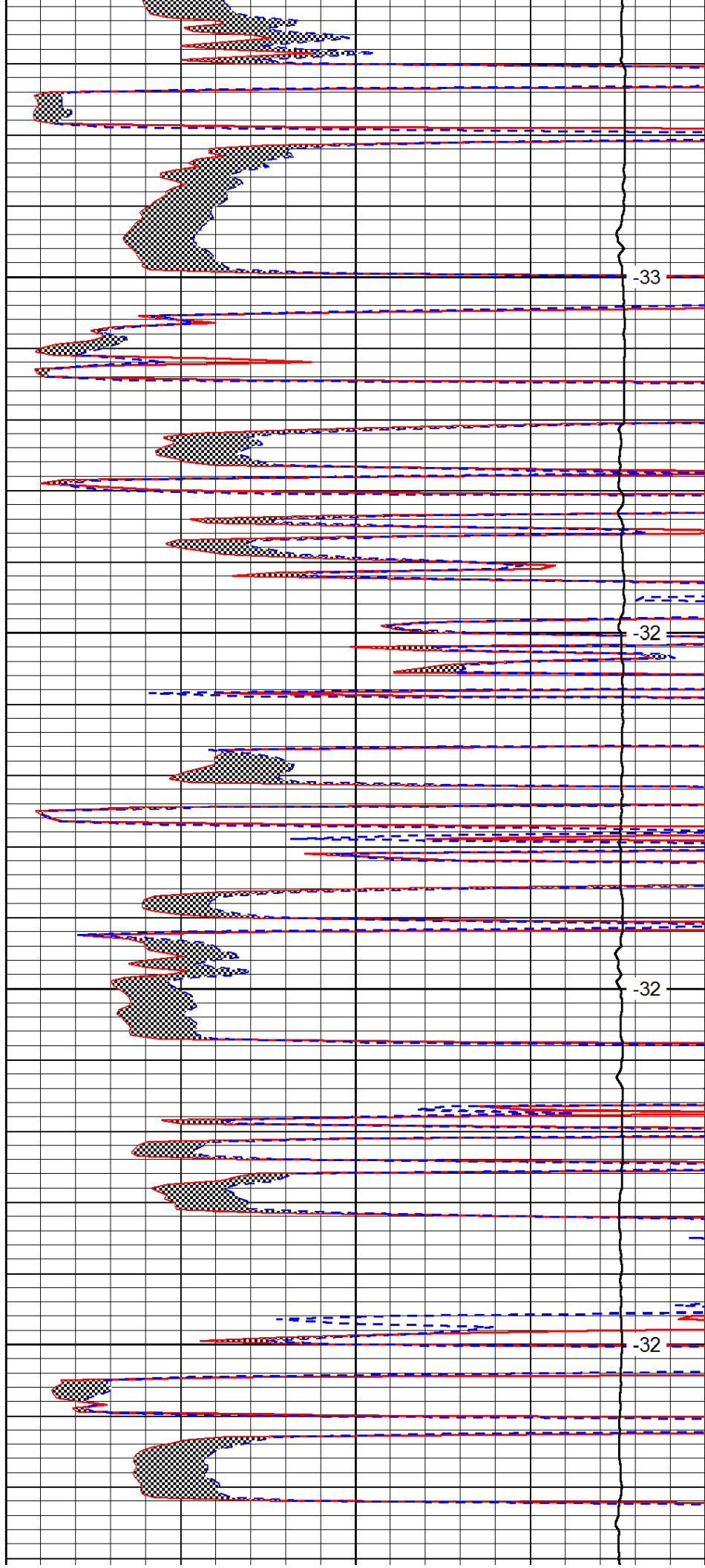


3900

3950

4000

4050

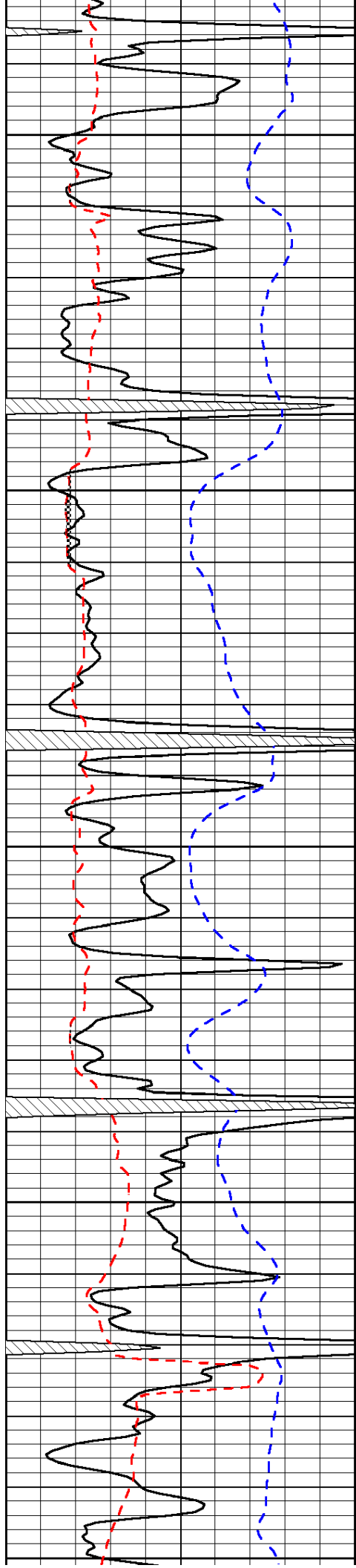


-33

-32

-32

-32



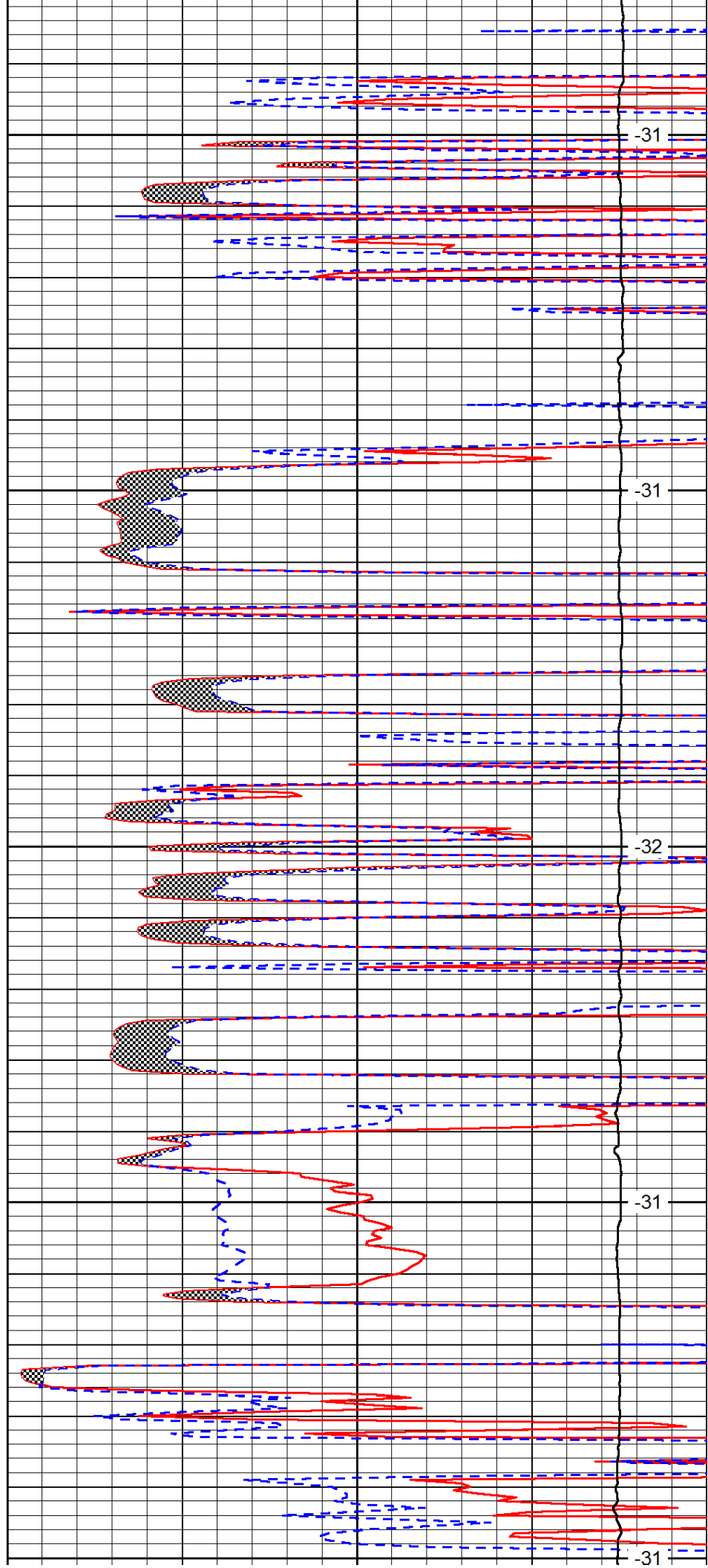
4100

4150

4200

4250

4300



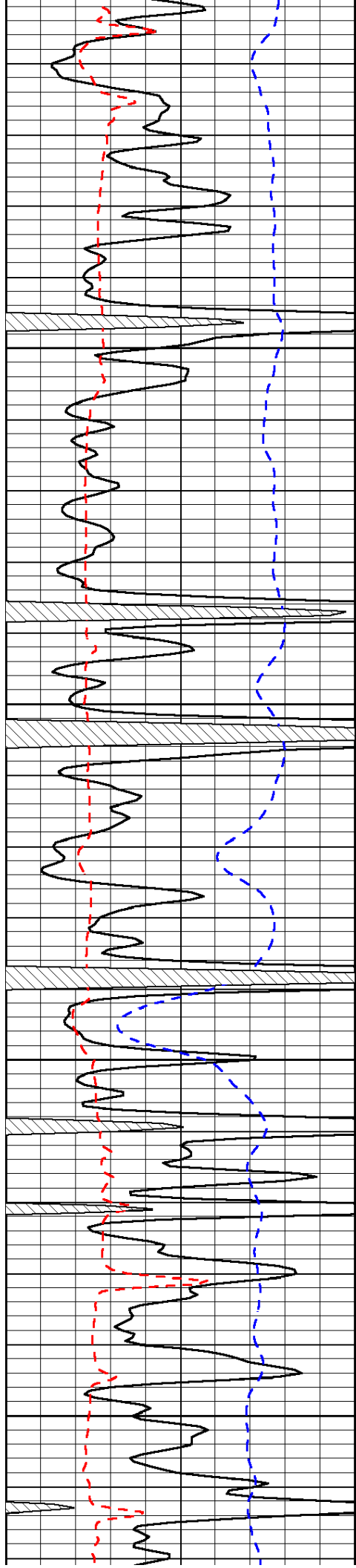
-31

-31

-32

-31

-31

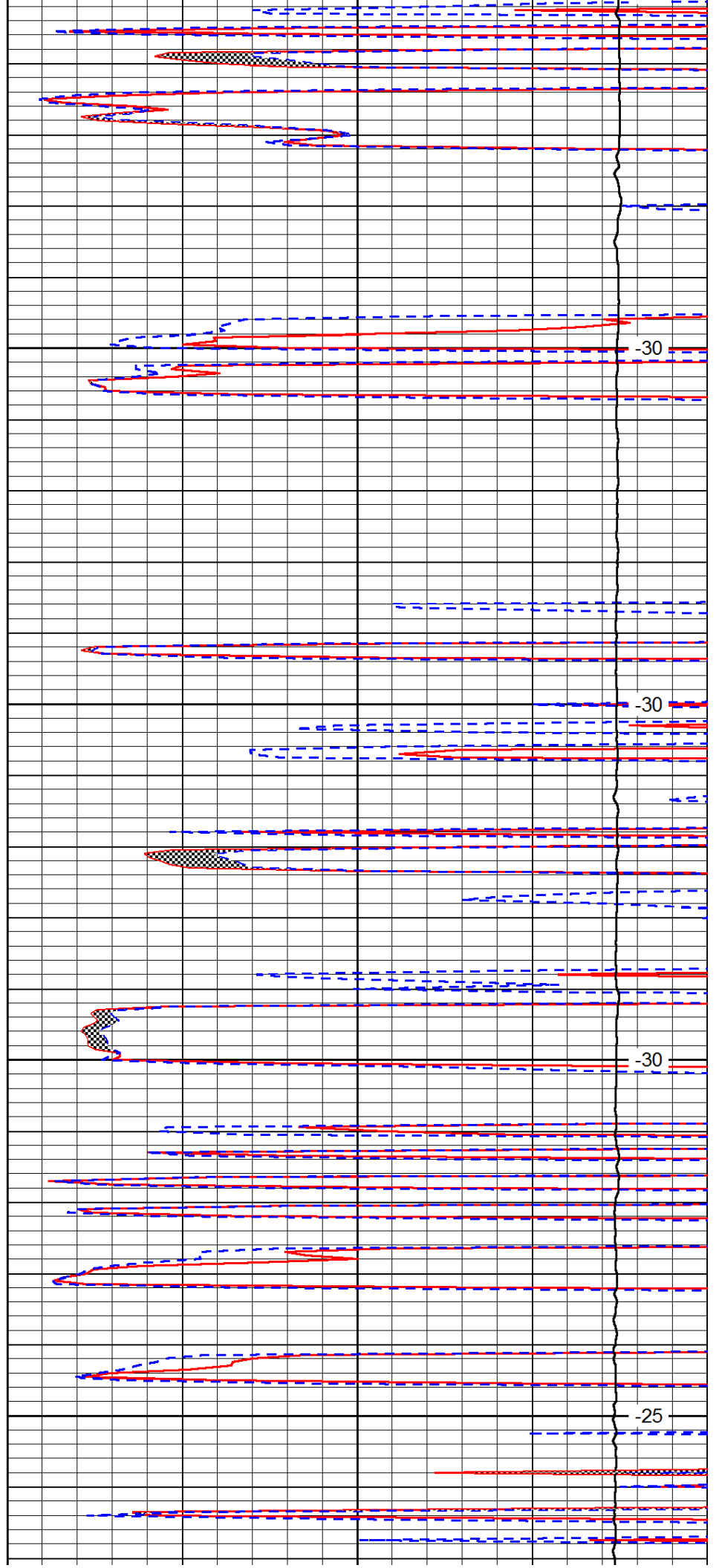


4350

4400

4450

4500

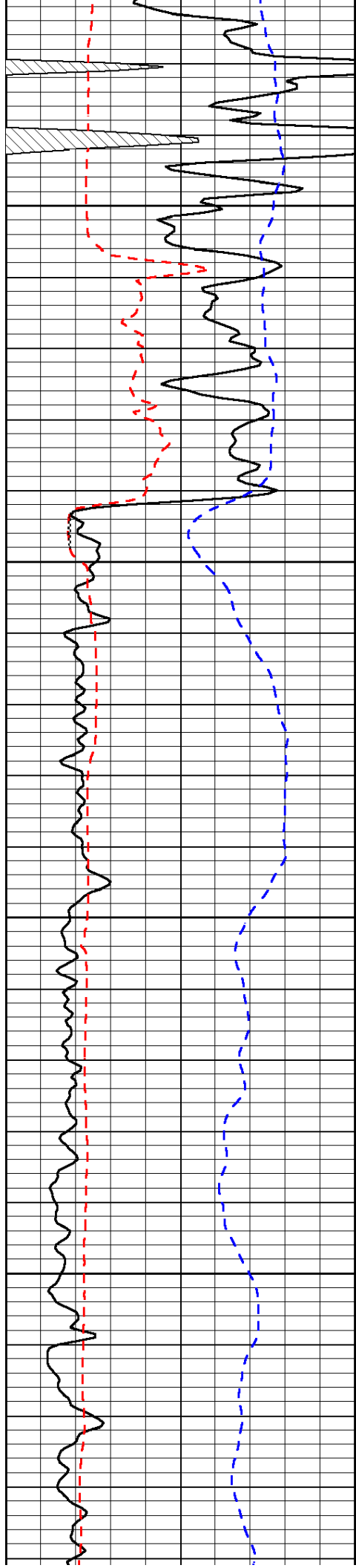


-30

-30

-30

-25

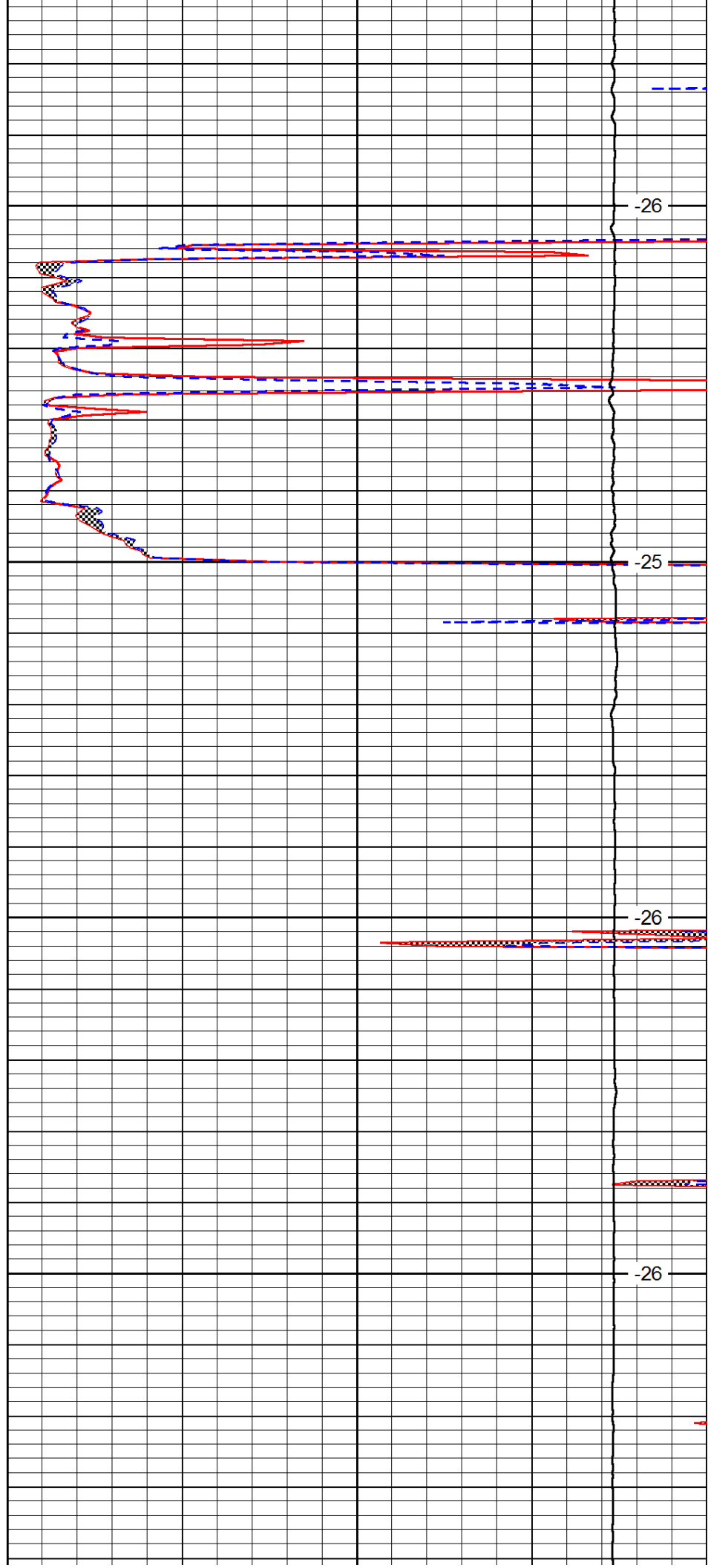


4550

4600

4650

4700

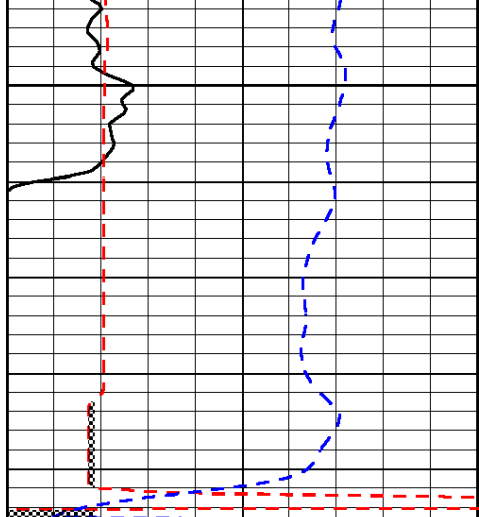


-26

-25

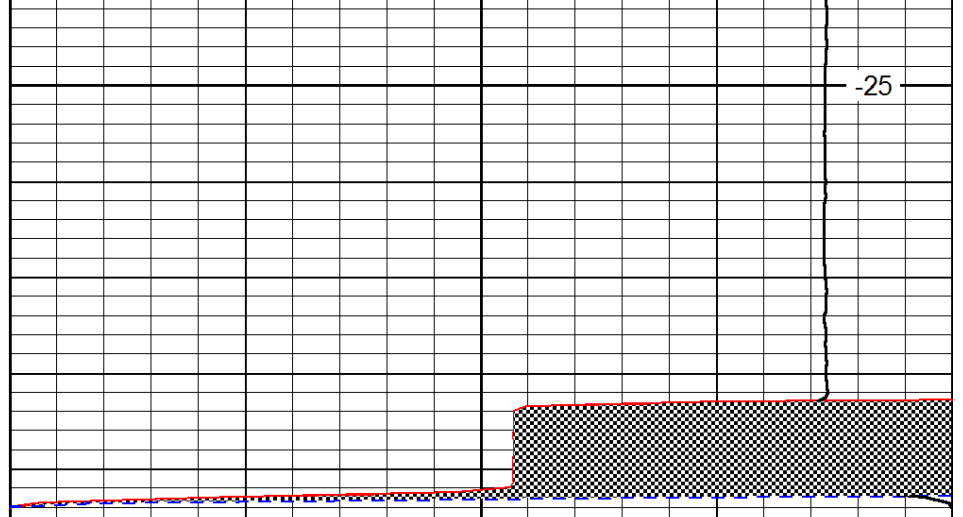
-26

-26



4750

0	Gamma Ray	150
6	Micro Log Caliper (GAPI)	16
-200	SP (mV)	0



-25

0	Micro Inverse 1 X 1	40
0	Micro Normal 2"	40
15000	Line Weight	0

LSPD