



Pioneer Energy Services

Dual Induction Log

15-109-21114-00-00

API No.

Company **New Gulf Operating, LLC**

Well **Byron #1-31**

Field

County **Logan**

State

Kansas

Location **1295' FSL & 1572' FEL**

Sec: **31**

Twp: **14S**

Rge: **34W**

Other Services
CNL/CDL
MEL

Permanent Datum **Ground Level**

Log Measured From **Kelly Bushing**

Drilling Measured From **Kelly Bushing**

10 Ft. Above Perm. Datum

Elevation

K.B. 3029

D.F. 3019

Date **8/20/2012**

Run Number **One**

Depth Driller **4785**

Depth Logger **4784**

Bottom Logged Interval **4783**

Top Log Interval **250**

Casing Driller **8.625 @ 262**

Casing Logger **260**

Bit Size **7.875**

Type Fluid in Hole **Chemical**

Salinity,ppm CL **8000**

Density / Viscosity **9.3 58**

pH / Fluid Loss **10.0 10.4**

Source of Sample **Flowline**

Rm @ Meas. Temp **0.80 @ 75**

Rmf @ Meas. Temp **0.60 @ 75**

Rmc @ Meas. Temp **1.08 @ 75**

Source of Rmf / Rmc **Charts**

Rm @ BHT **0.48 @ 126**

Operating Rig Time **5 Hours**

Max Rec. Temp. F **126**

Equipment Number **91**

Location **Hays**

Recorded By **D. Schmidt**

Witnessed By **John Goldsmith**

<<< Fold Here >>>

All interpretations are opinions based on inferences from electrical or other measurements and we cannot and do not guarantee the accuracy or correctness of any interpretation, and we shall not, except in the case of gross or willful negligence on our part, be liable or responsible for any loss, costs, damages, or expenses incurred or sustained by anyone resulting from any interpretation made by any of our officers, agents or employees. These interpretations are also subject to our general terms and conditions set out in our current Price Schedule.

Comments

Thank you for using Pioneer Energy Services
www.pioneerenergy.com
 785 625 3858
 Russell Springs,
 1 East to Rd 270, 8 /14 South to Gold Road,
 2 1/2 East to location

Database File: c:\warrior\data\new gulf_byron #1-31\newgulf_082012hd.db
 Dataset Pathname: dil/ngstack
 Presentation Format: dil2in
 Dataset Creation: Mon Aug 20 16:23:12 2012
 Charted by: Depth in Feet scaled 1:600

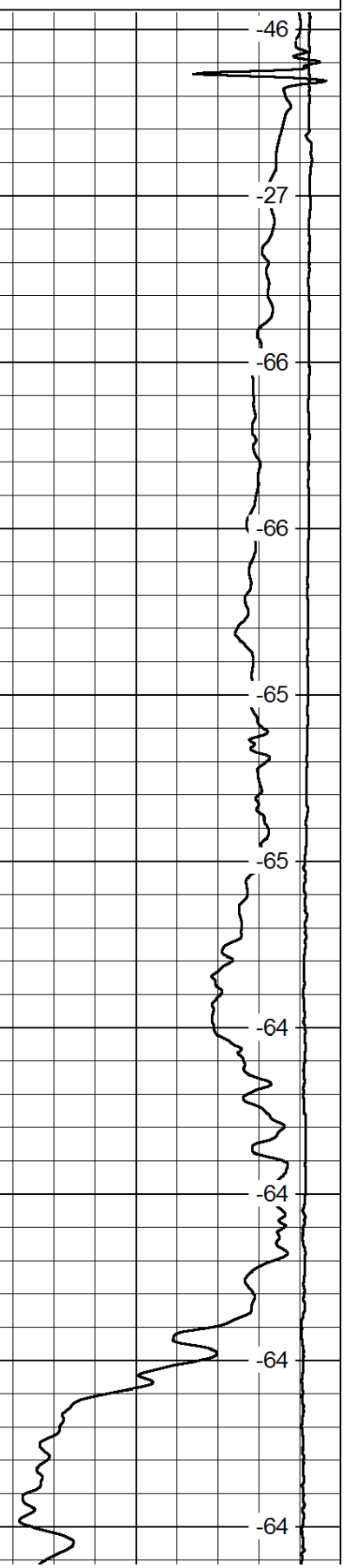
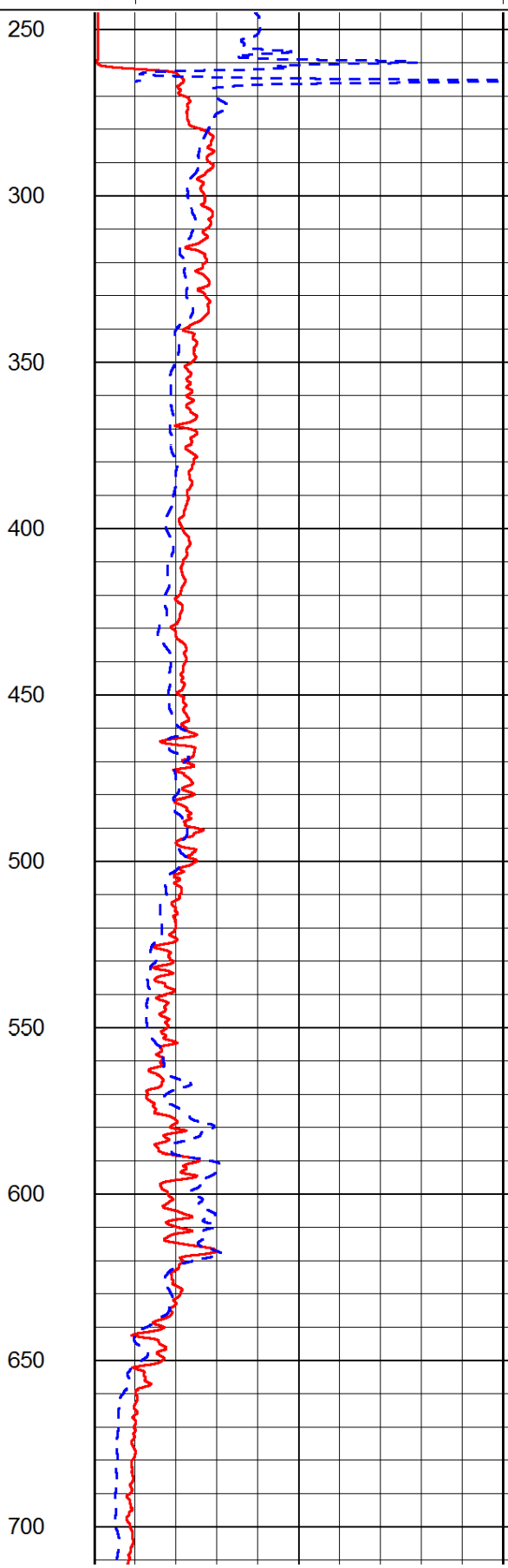
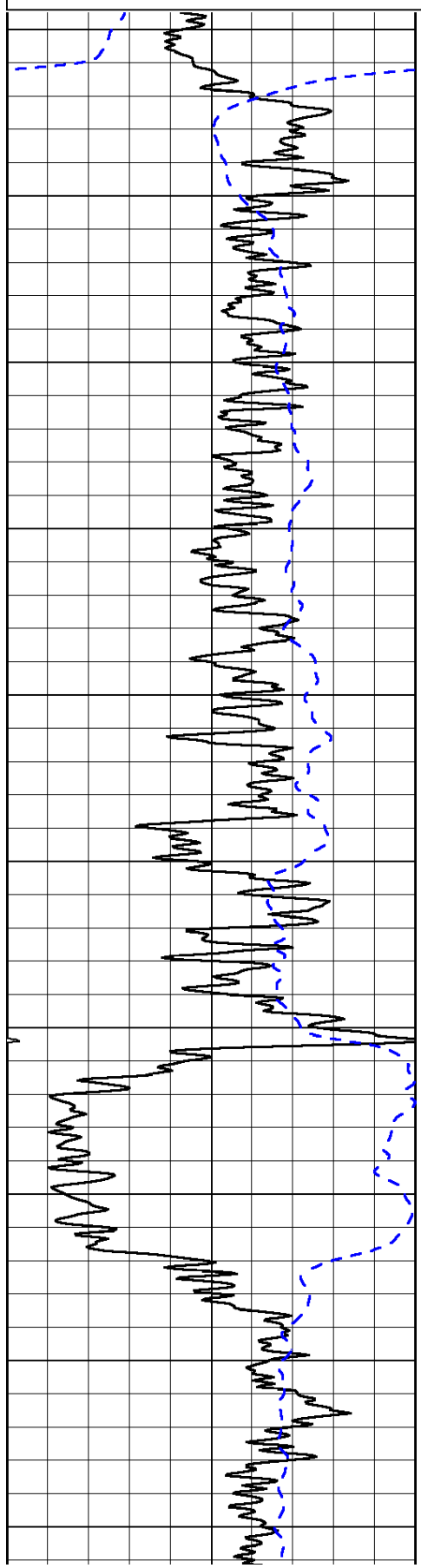
0	Gamma Ray	150
-200	SP (mV)	0

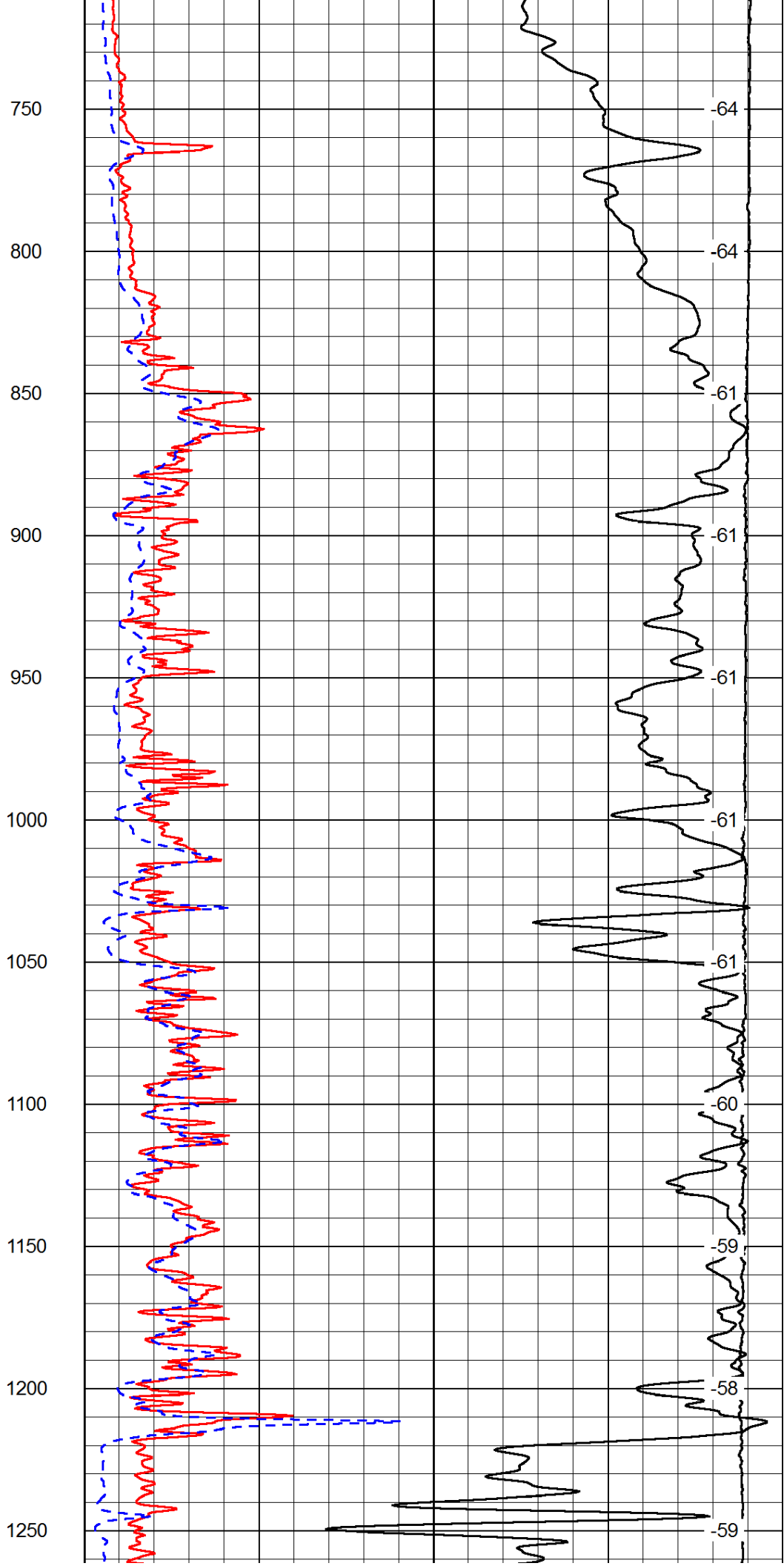
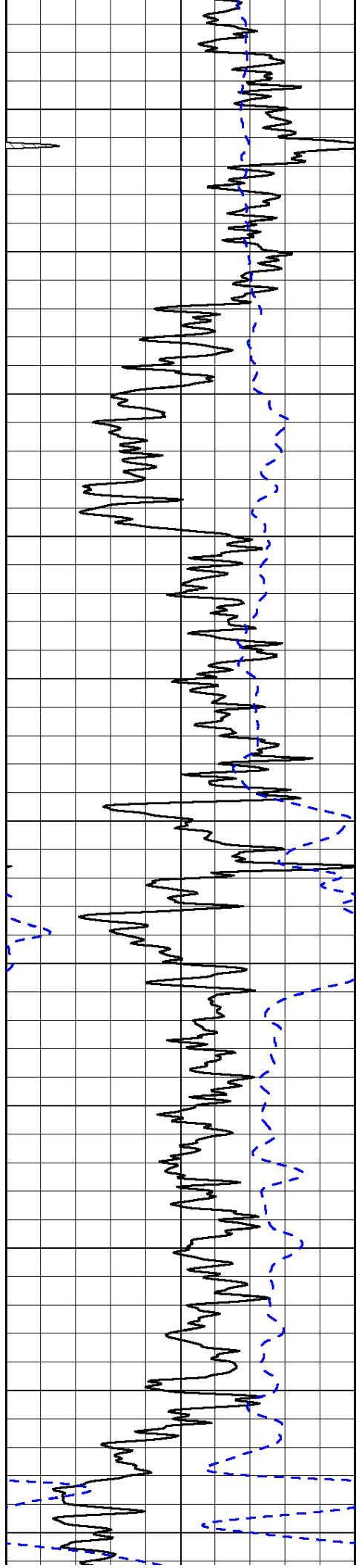
0	Shallow Resistivity	50
0	Deep Resistivity	50

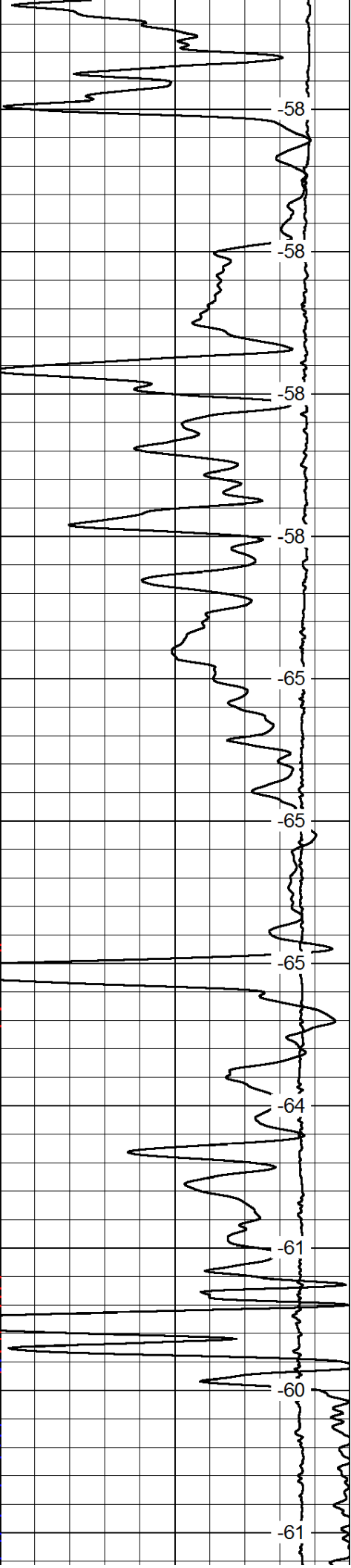
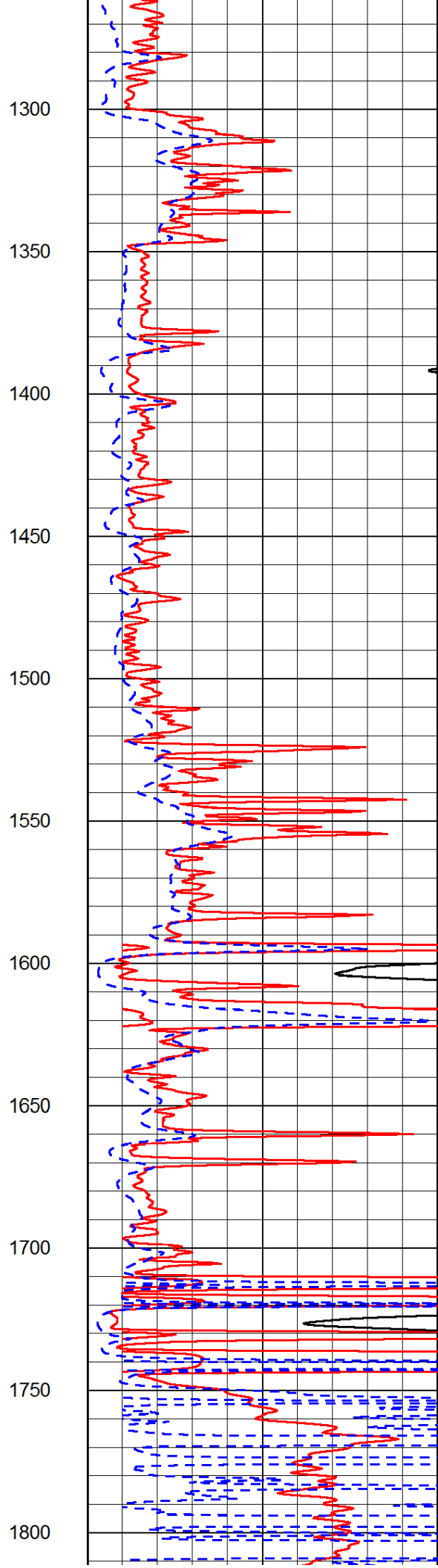
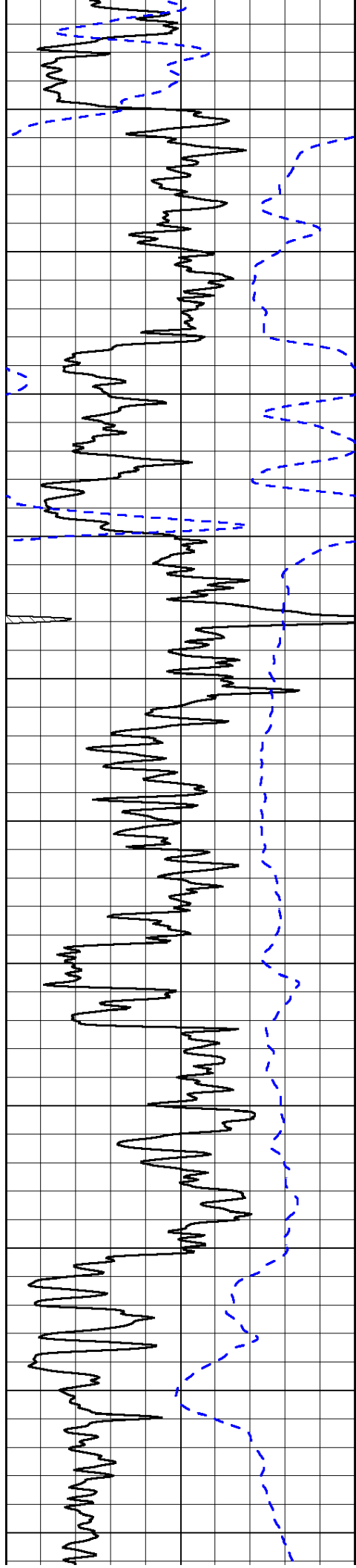
LSPD

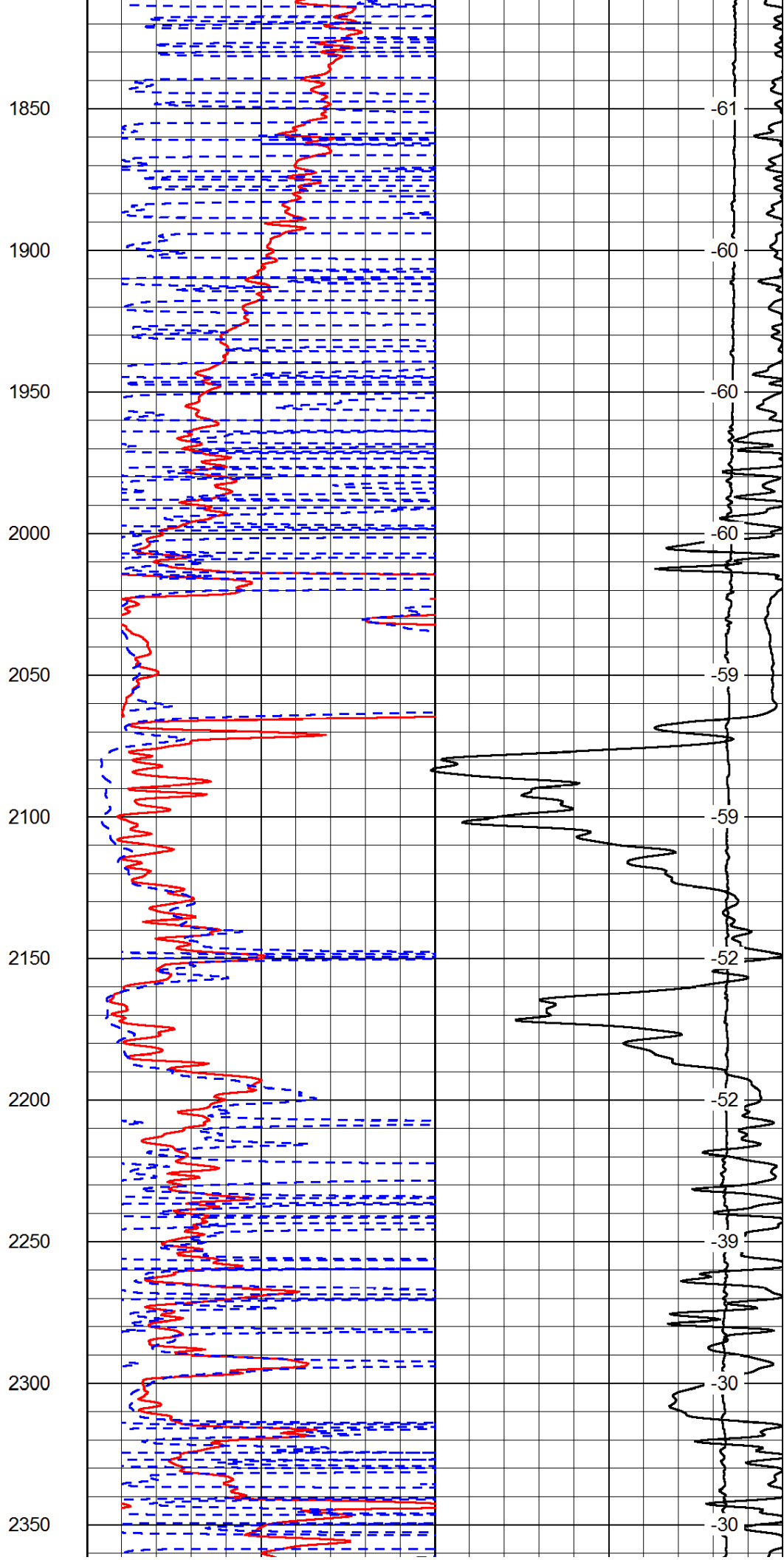
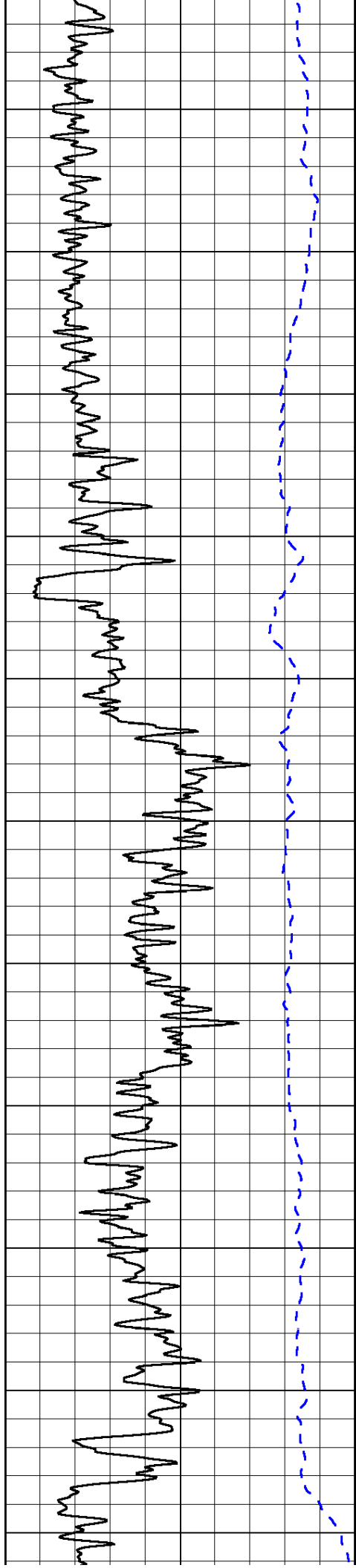
1000	Conductivity	0
15000	Line Tension	0

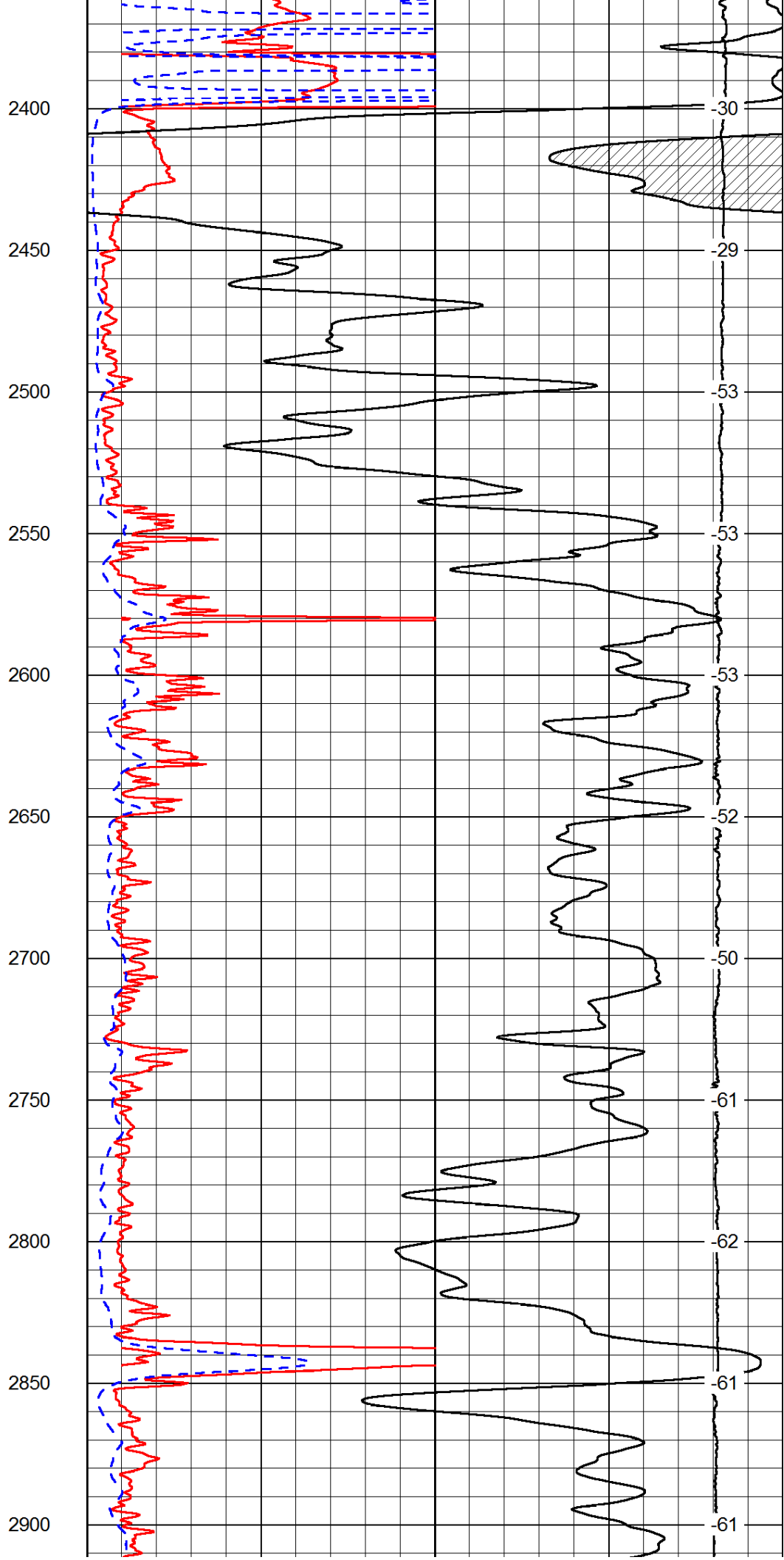
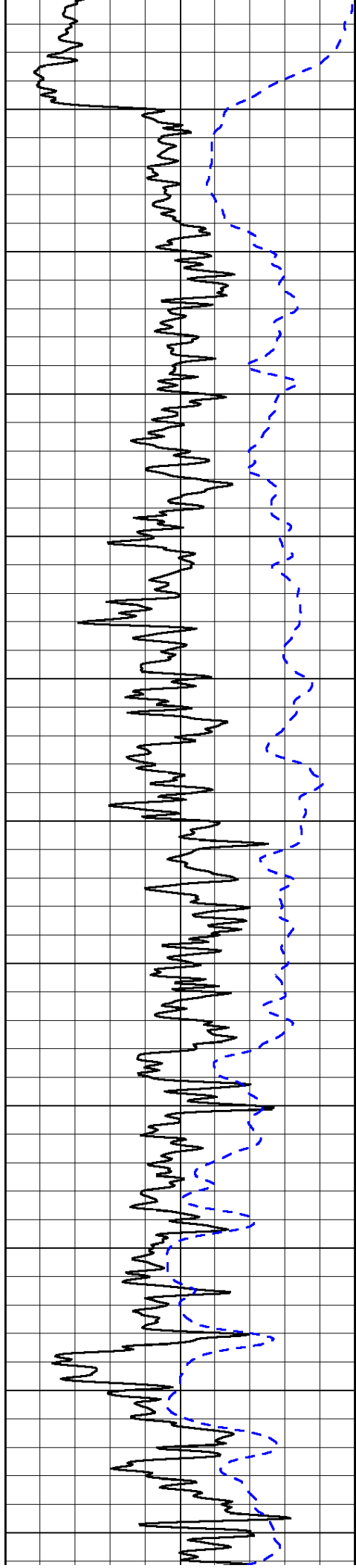
50	Shallow Resistivity	500
50	Deep Resistivity	500

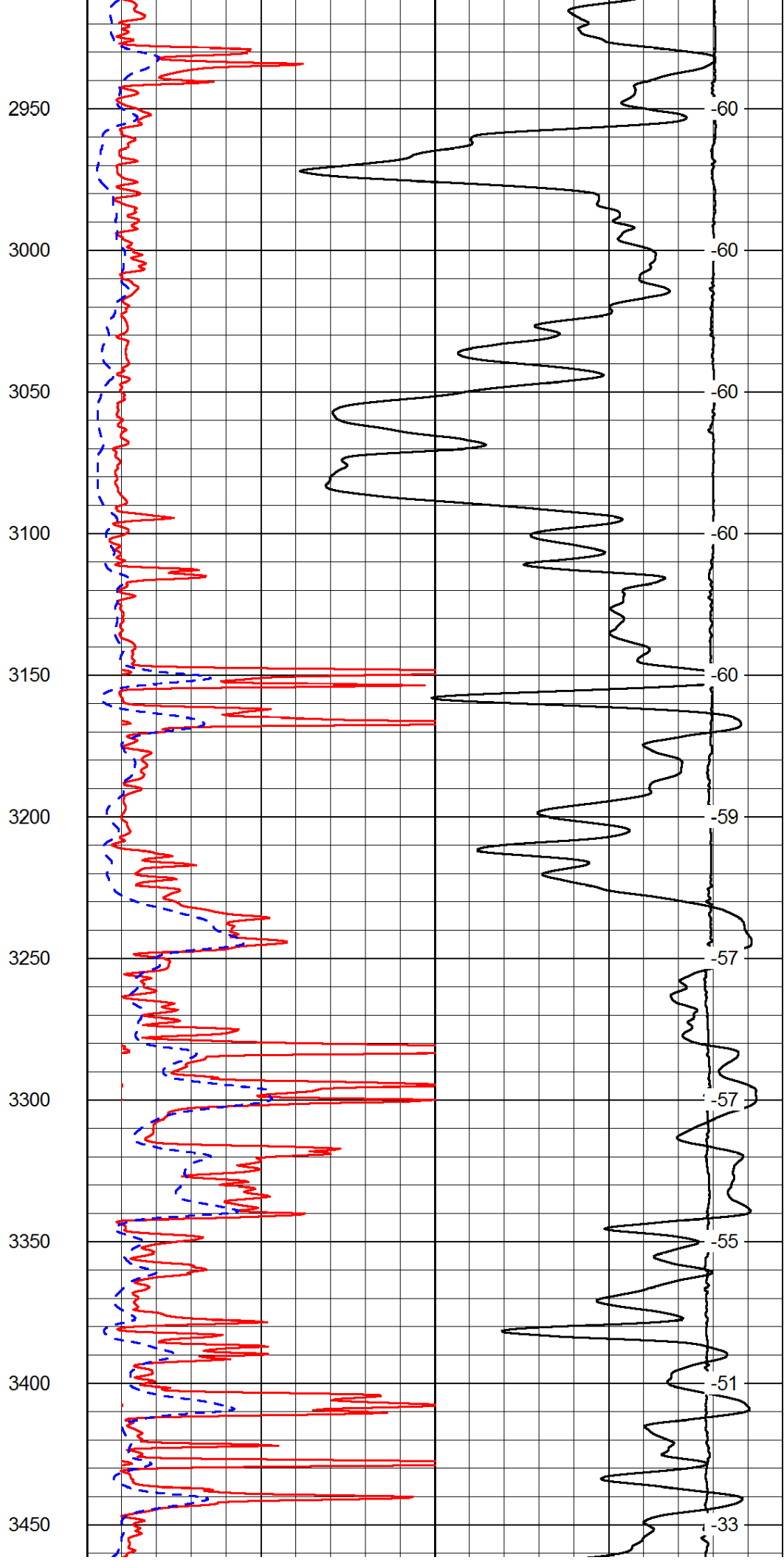
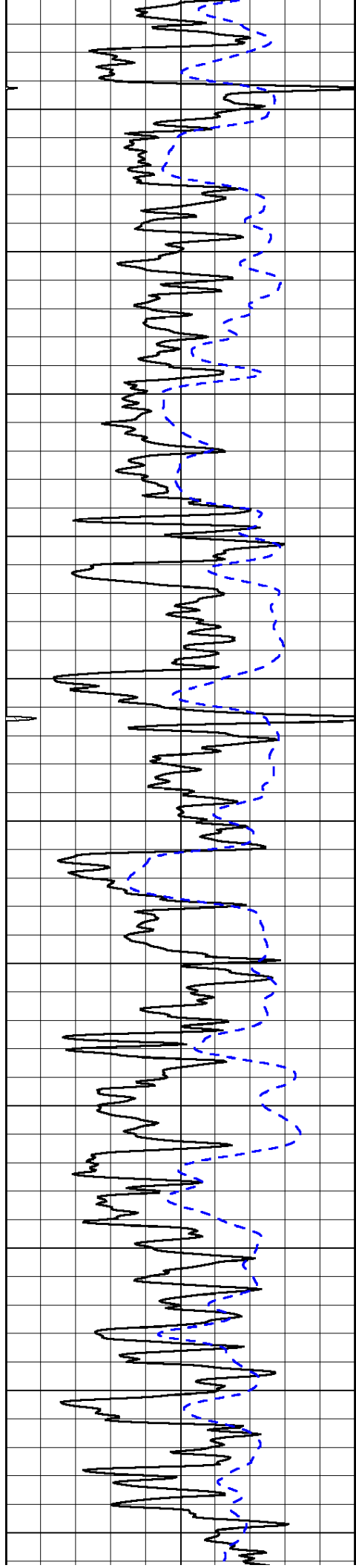


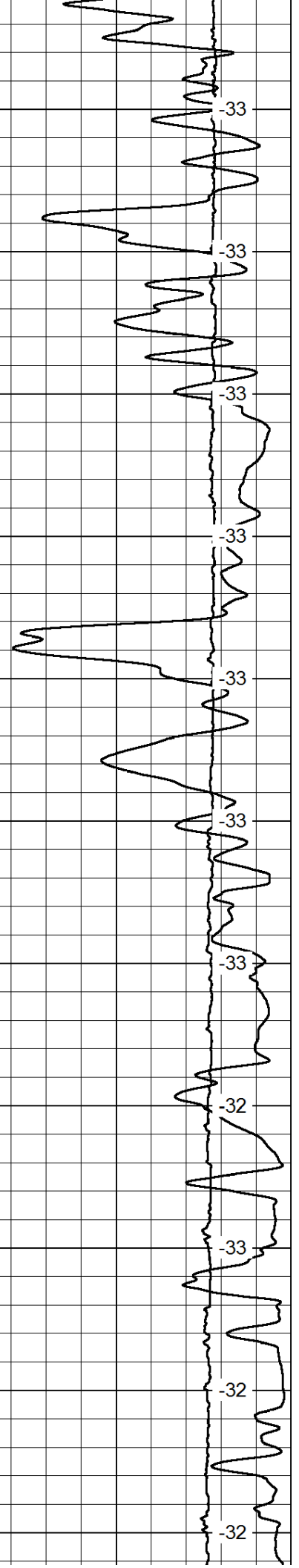
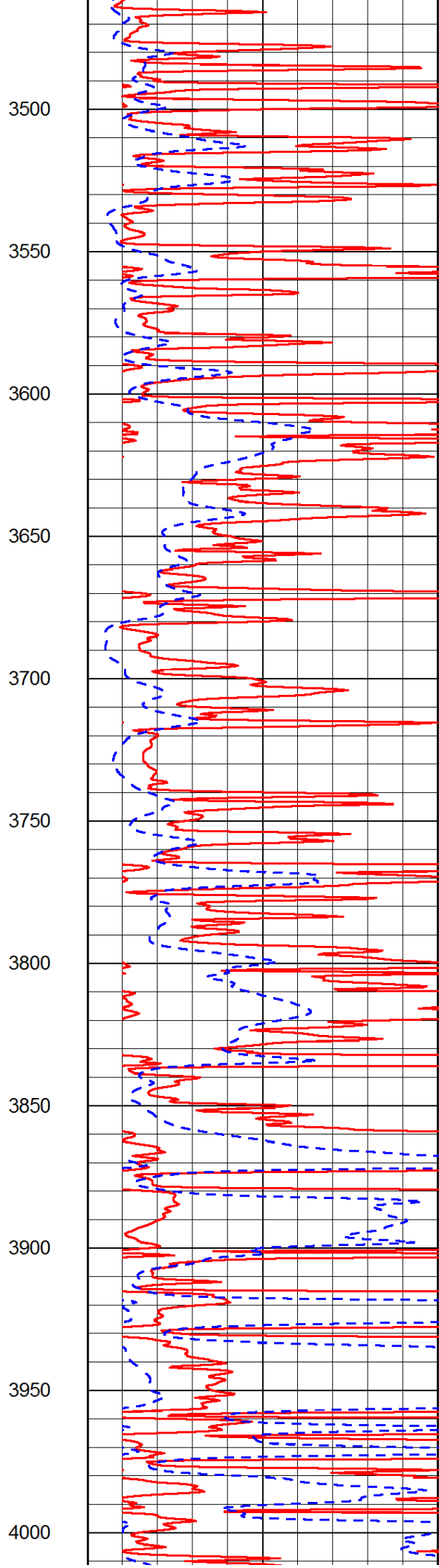
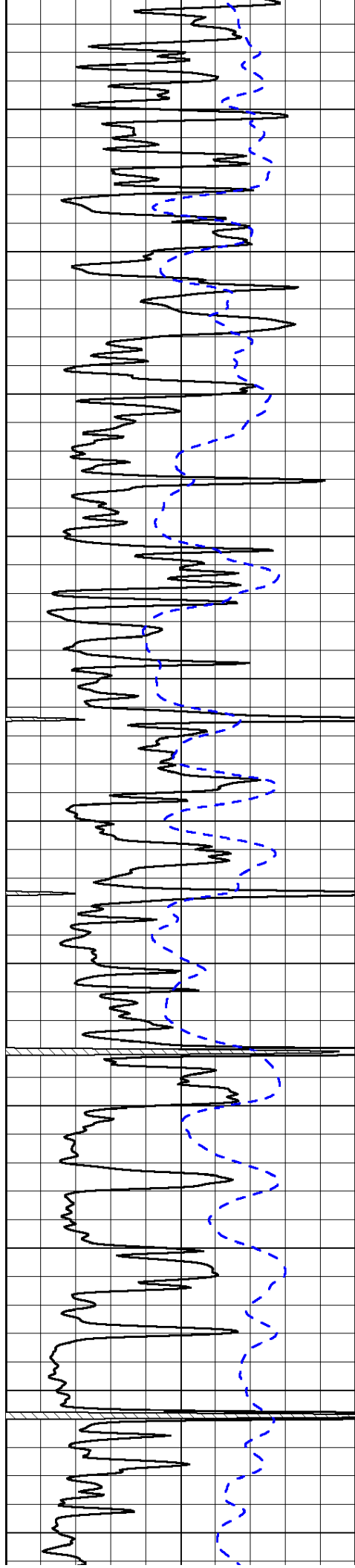


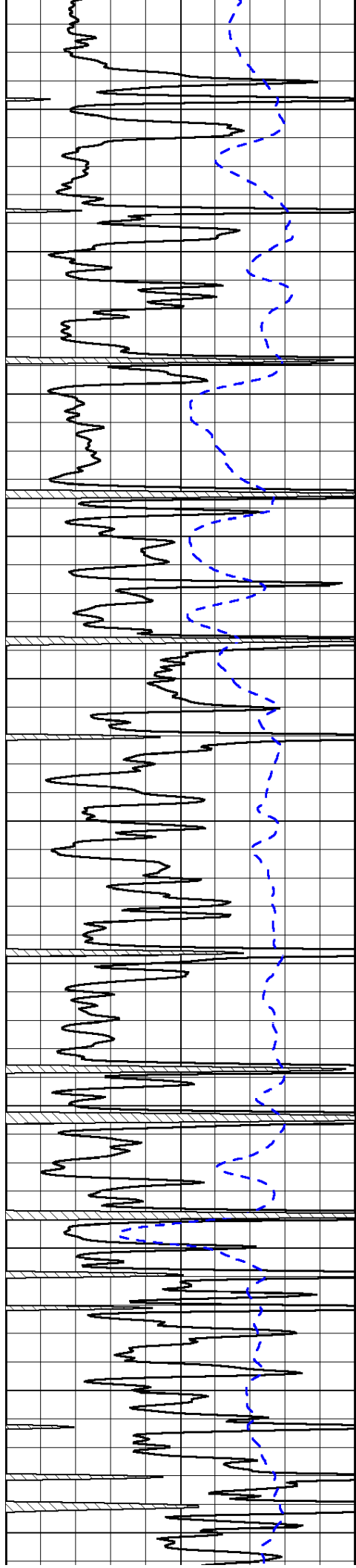




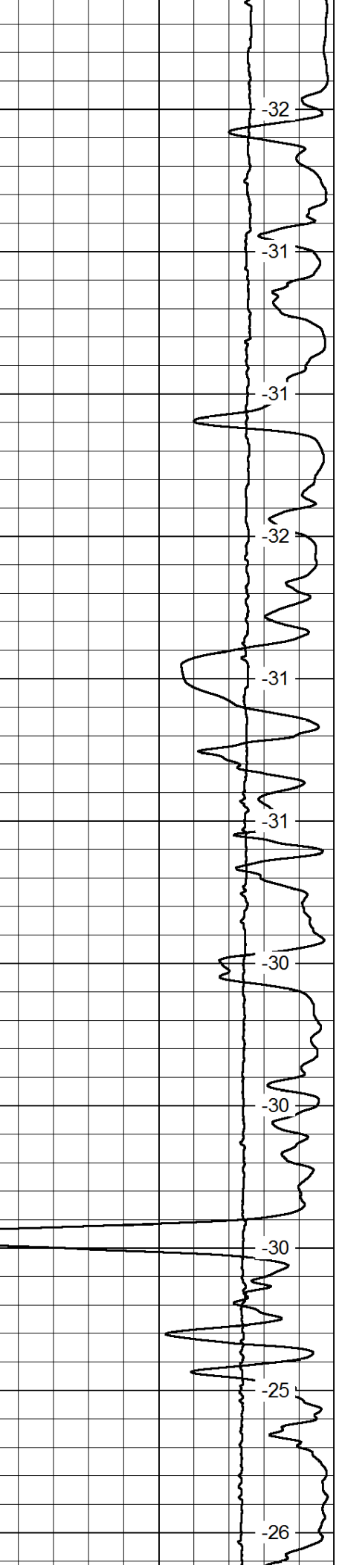
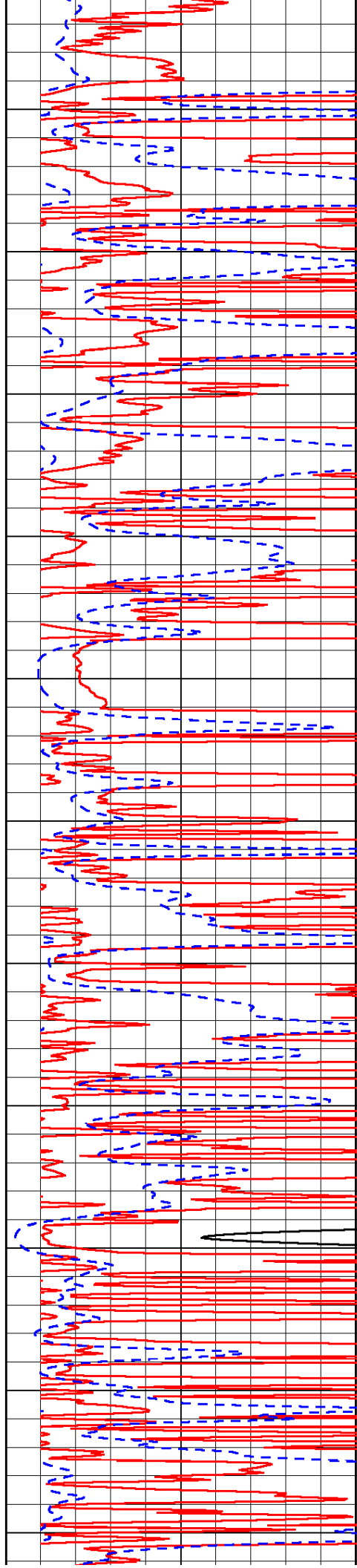




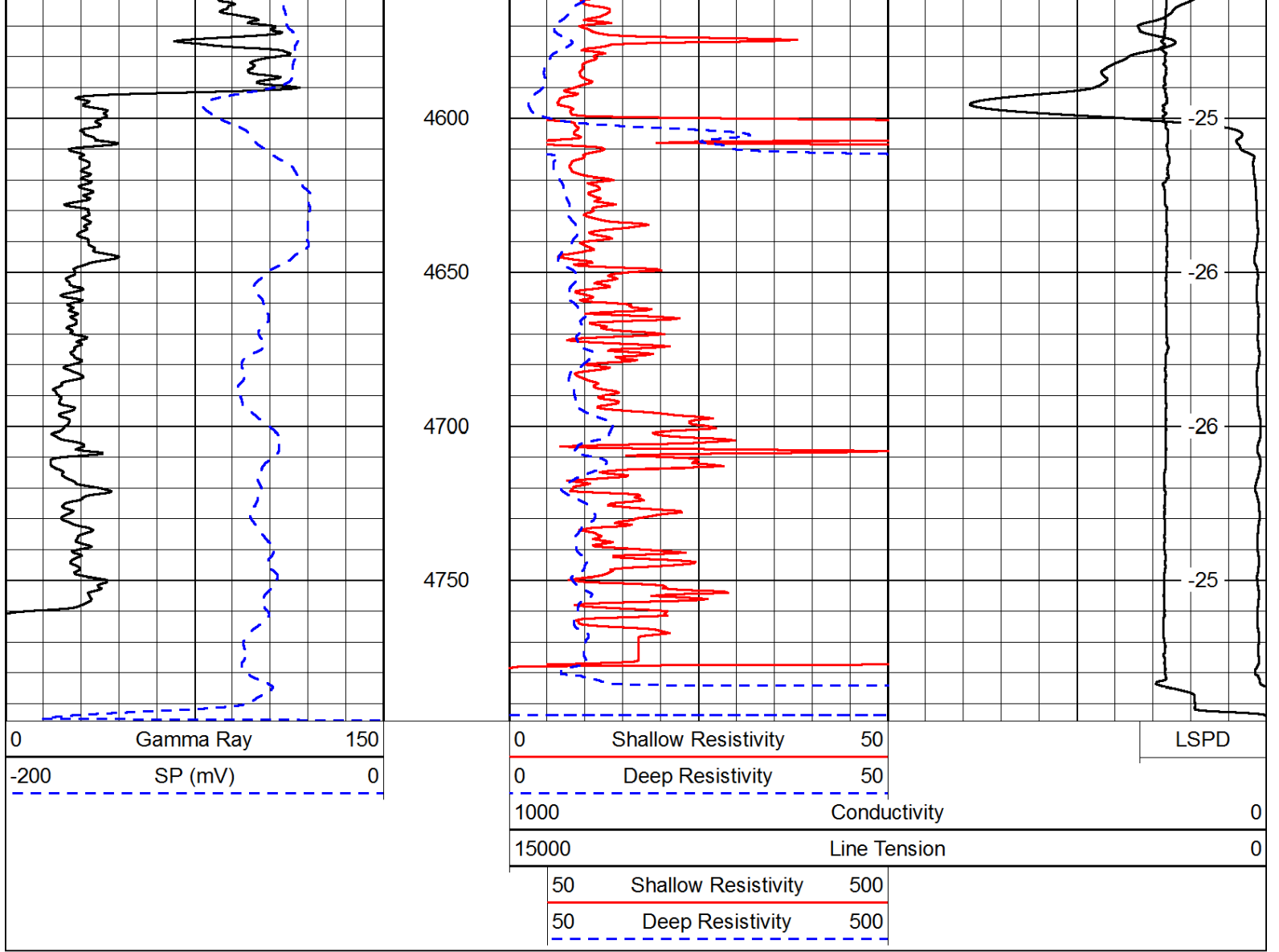




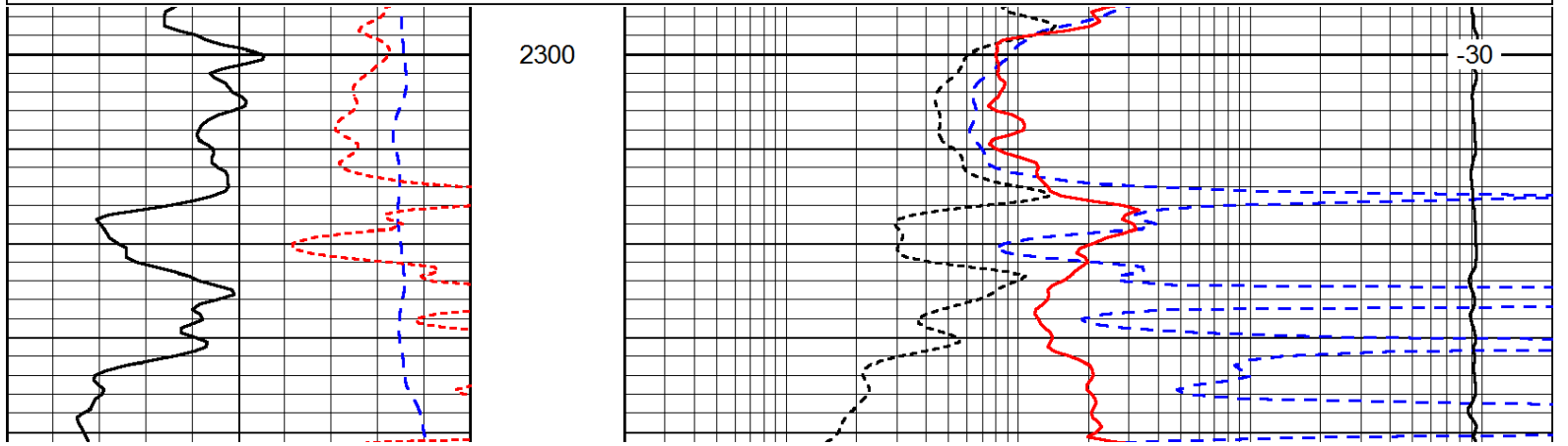
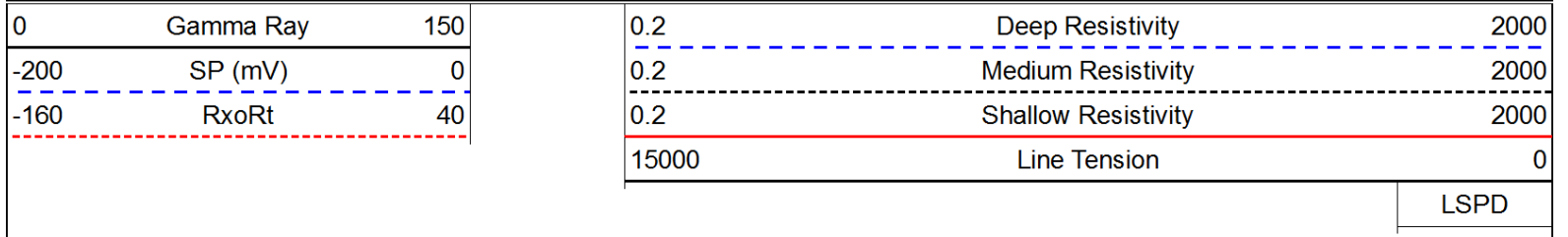
4050
4100
4150
4200
4250
4300
4350
4400
4450
4500
4550

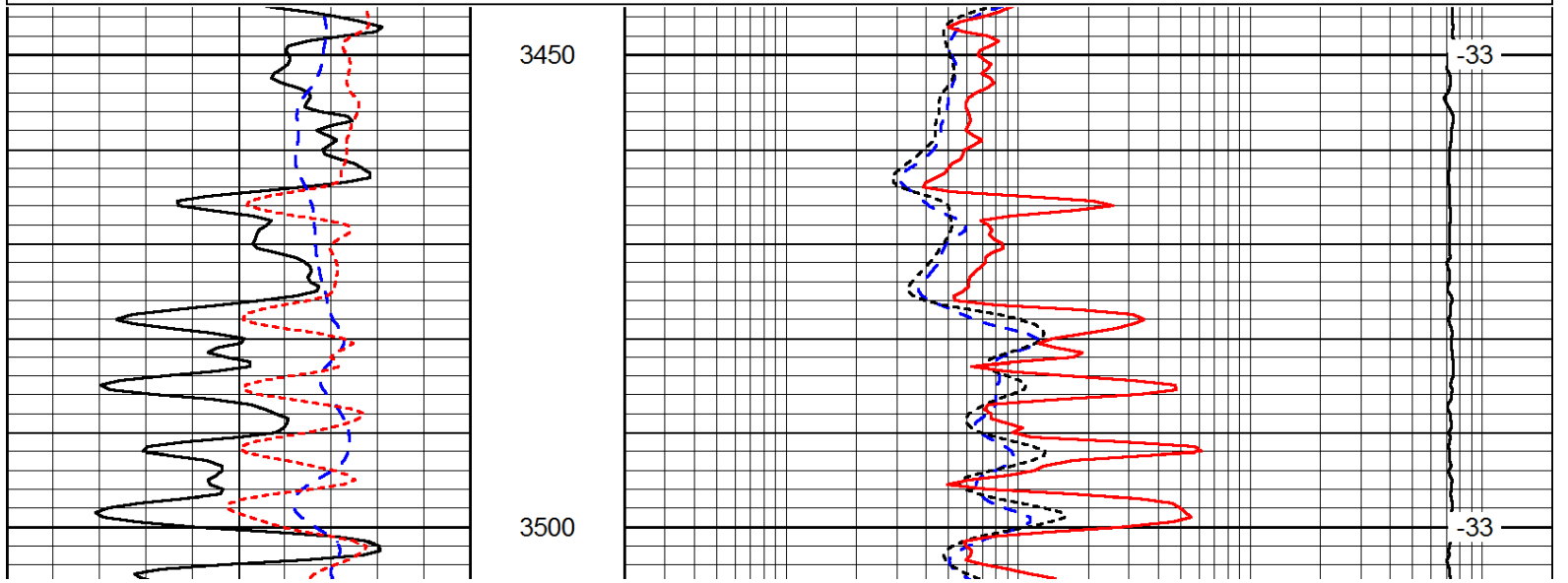
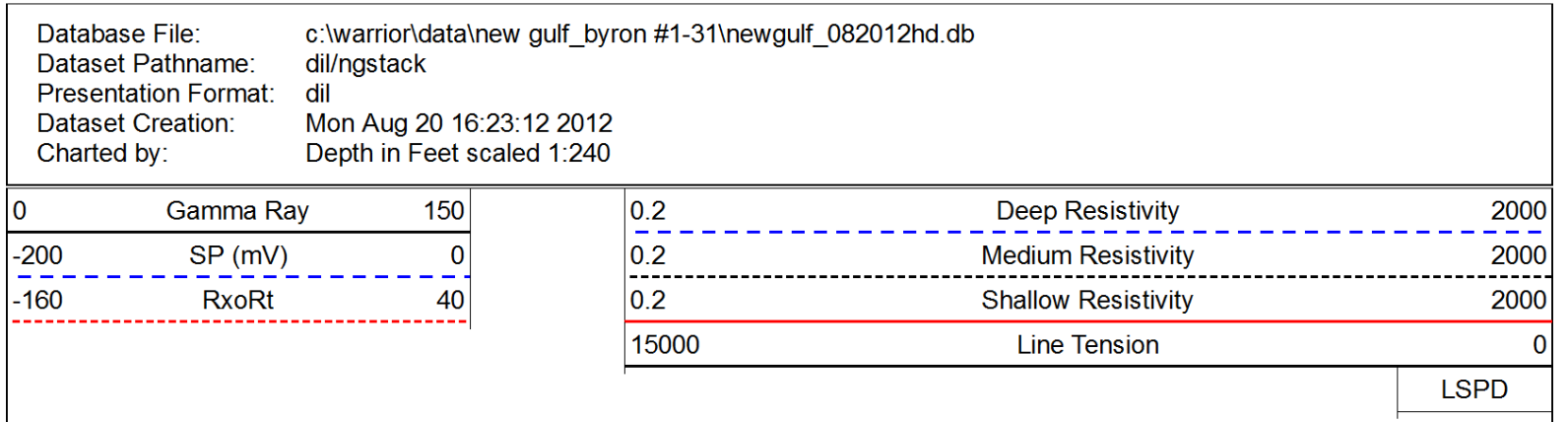
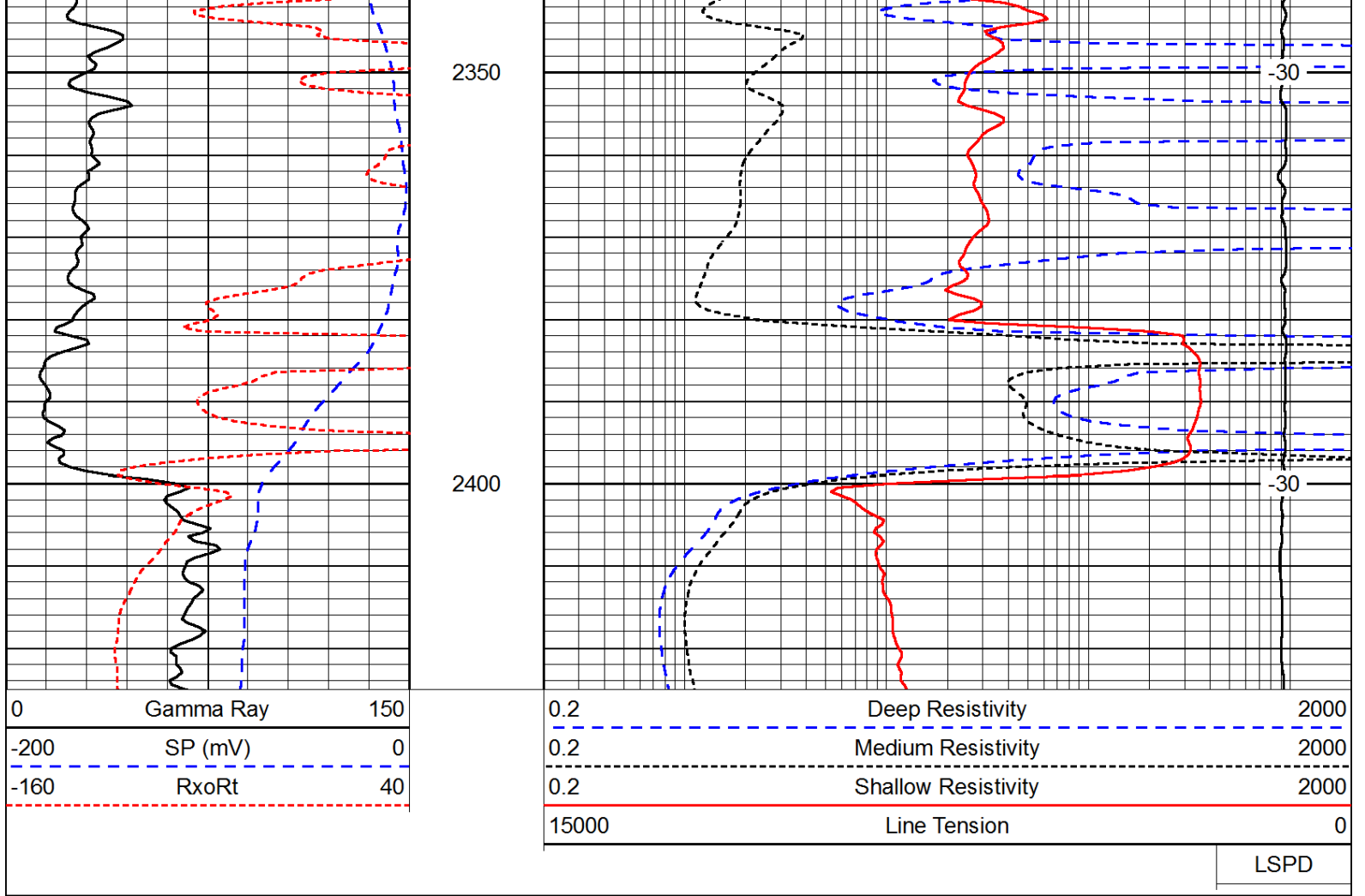


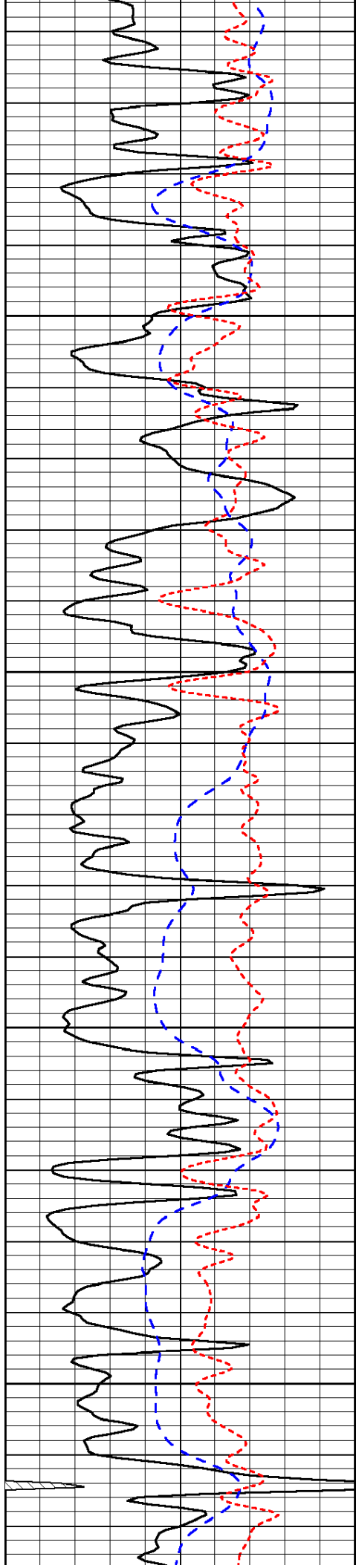
-32
-31
-31
-32
-31
-31
-30
-30
-30
-25
-26



Database File: c:\warrior\data\new gulf_byron #1-31\newgulf_082012hd.db
 Dataset Pathname: dil/ngstack
 Presentation Format: dil
 Dataset Creation: Mon Aug 20 16:23:12 2012
 Charted by: Depth in Feet scaled 1:240





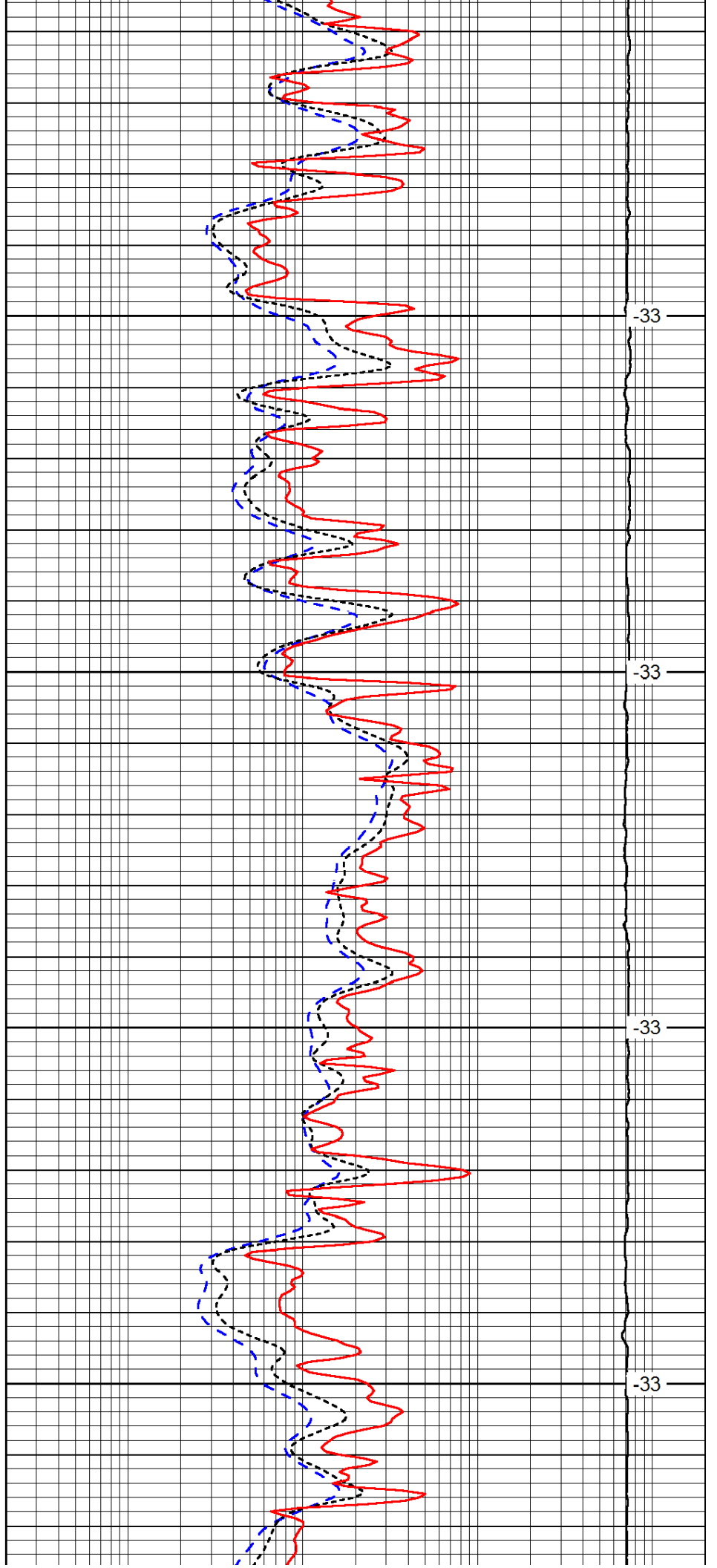


3550

3600

3650

3700

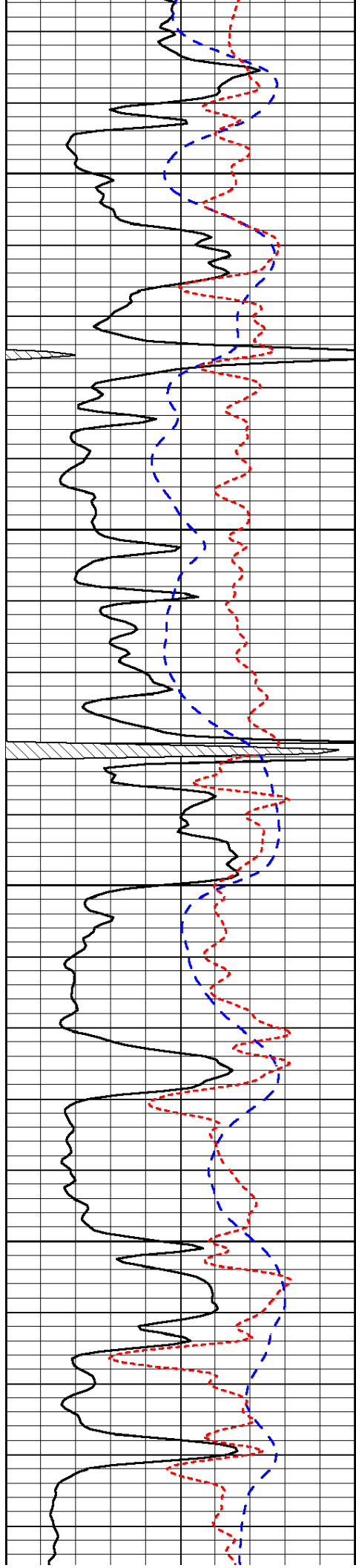


-33

-33

-33

-33

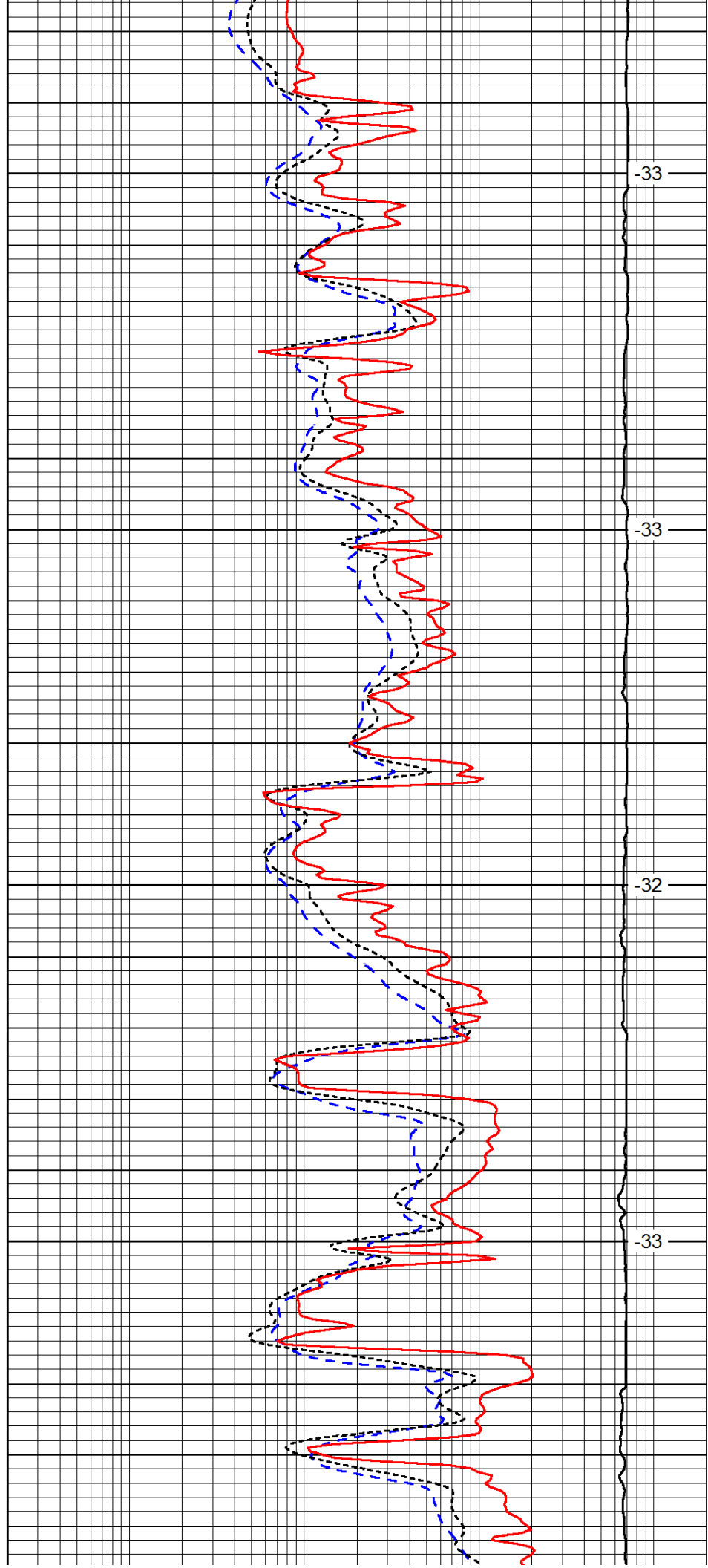


3750

3800

3850

3900

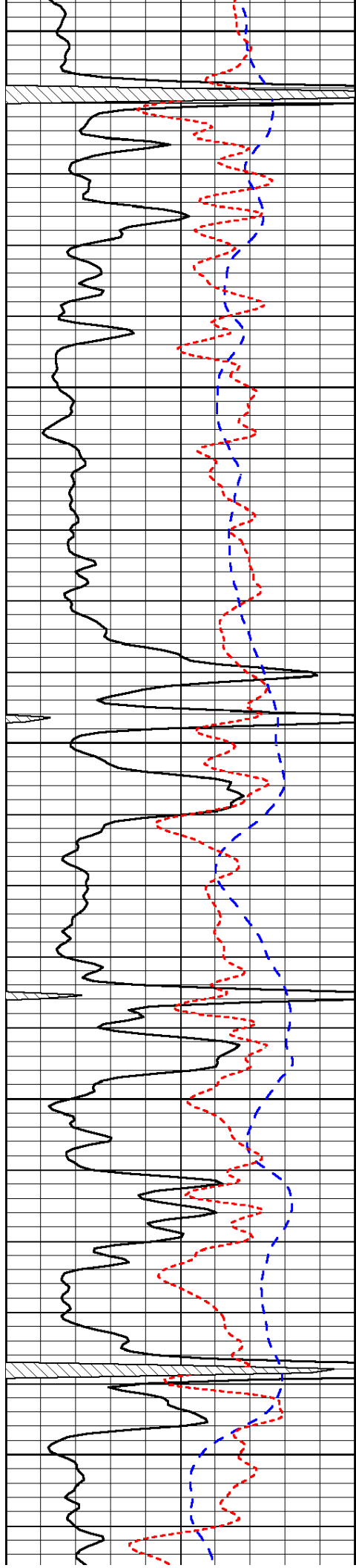


-33

-33

-32

-33



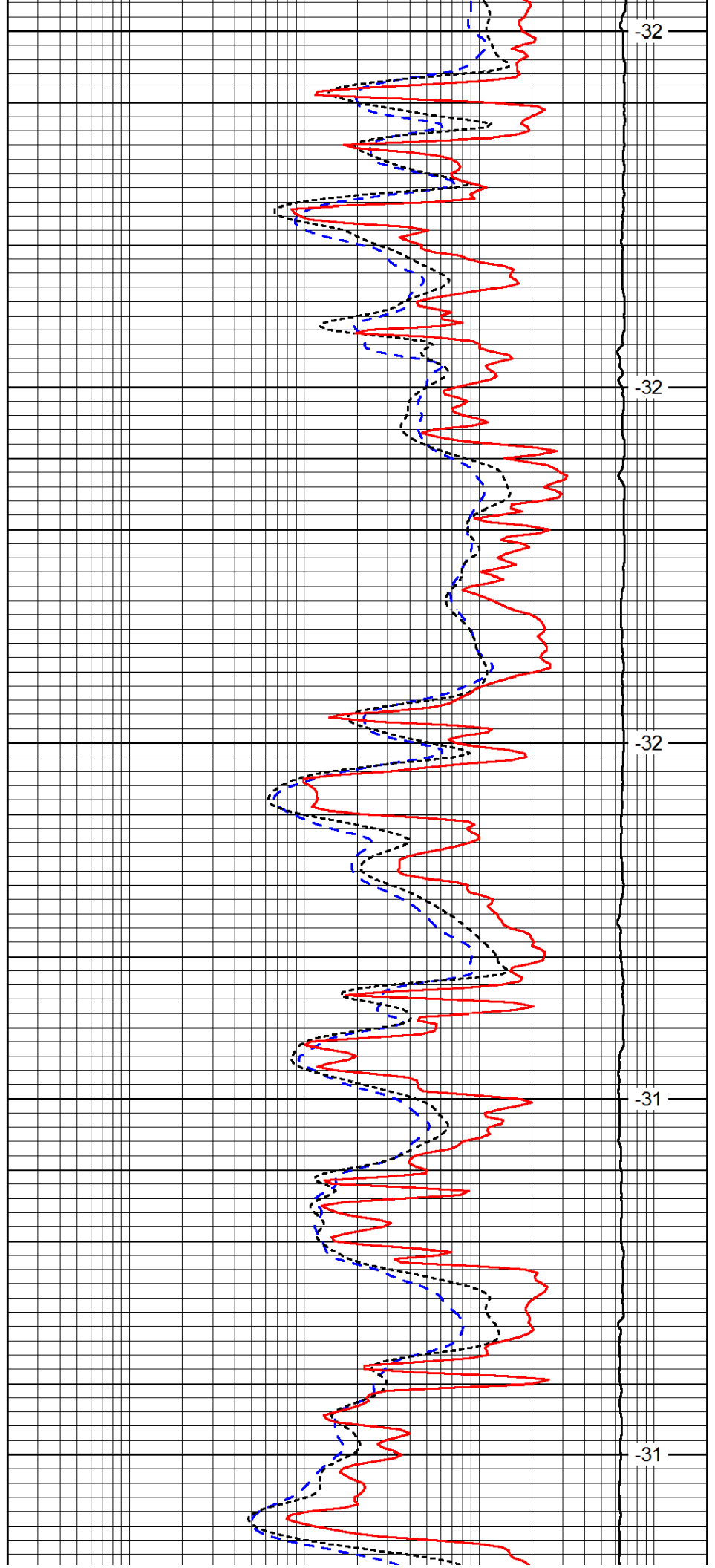
3950

4000

4050

4100

4150



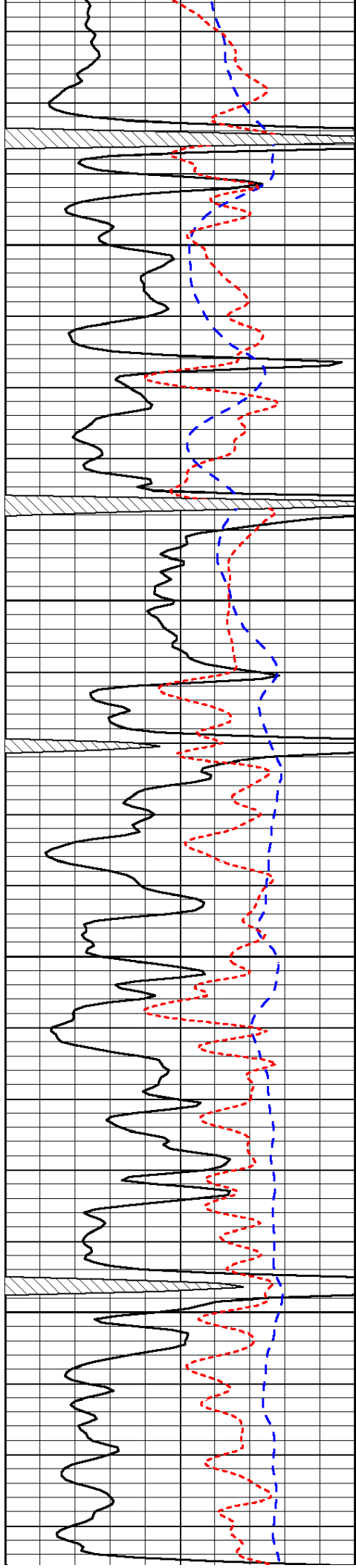
-32

-32

-32

-31

-31

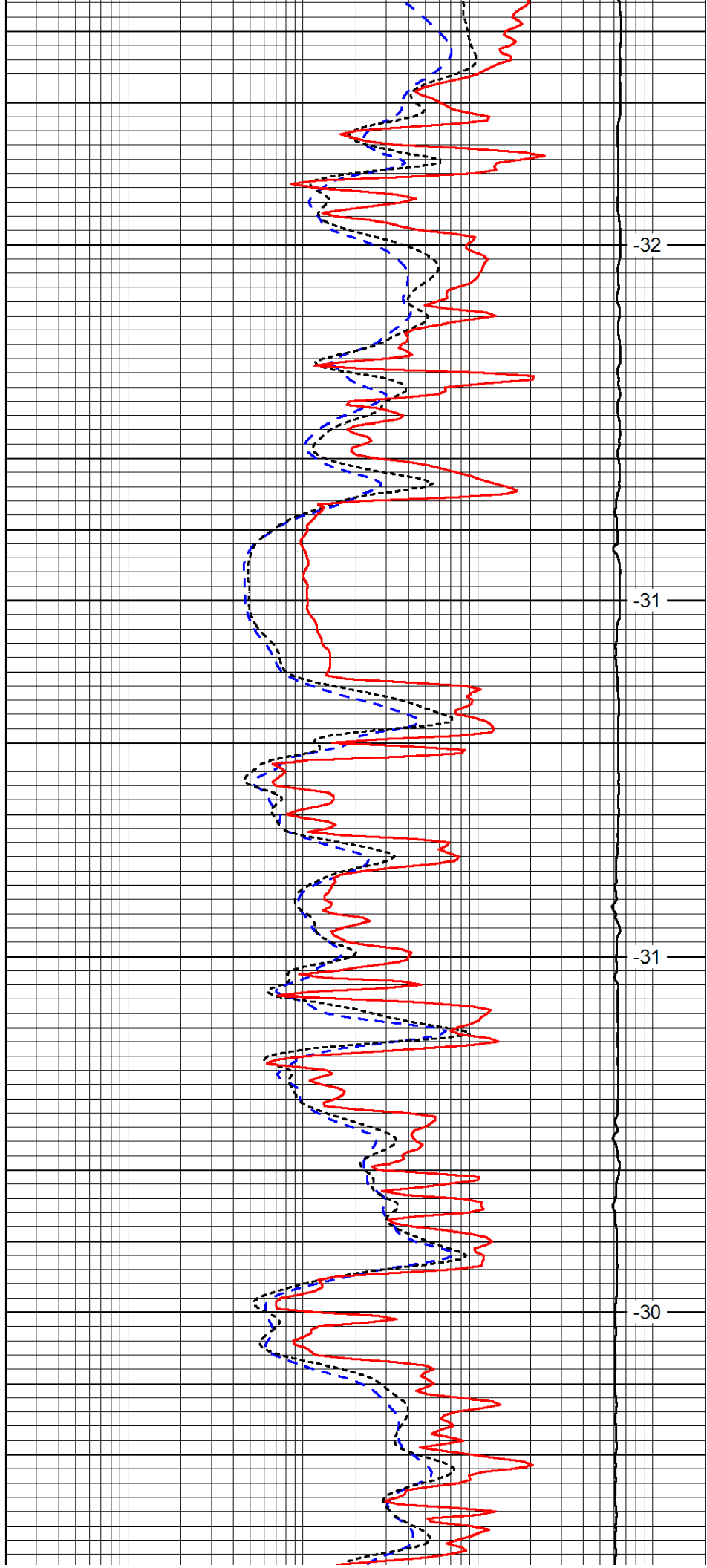


4200

4250

4300

4350

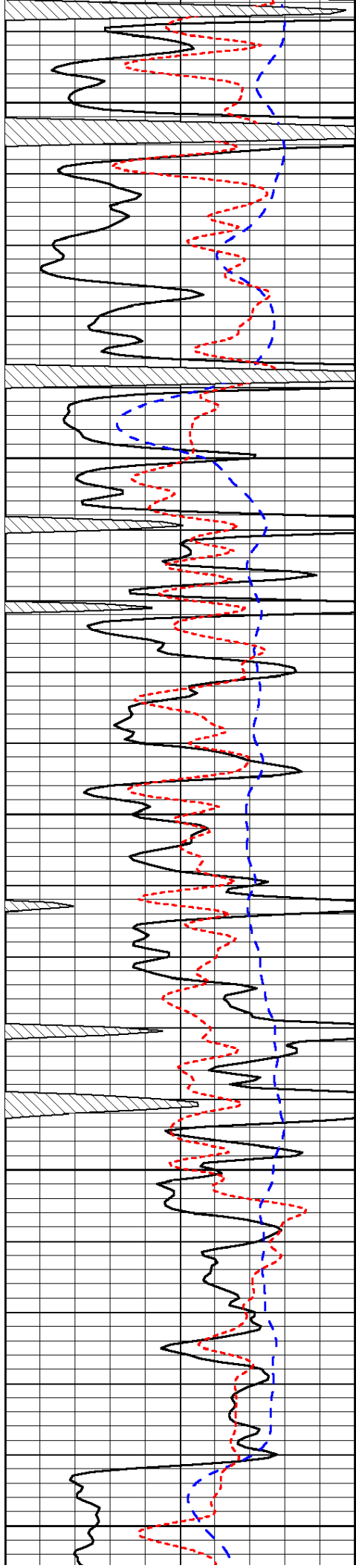


-32

-31

-31

-30



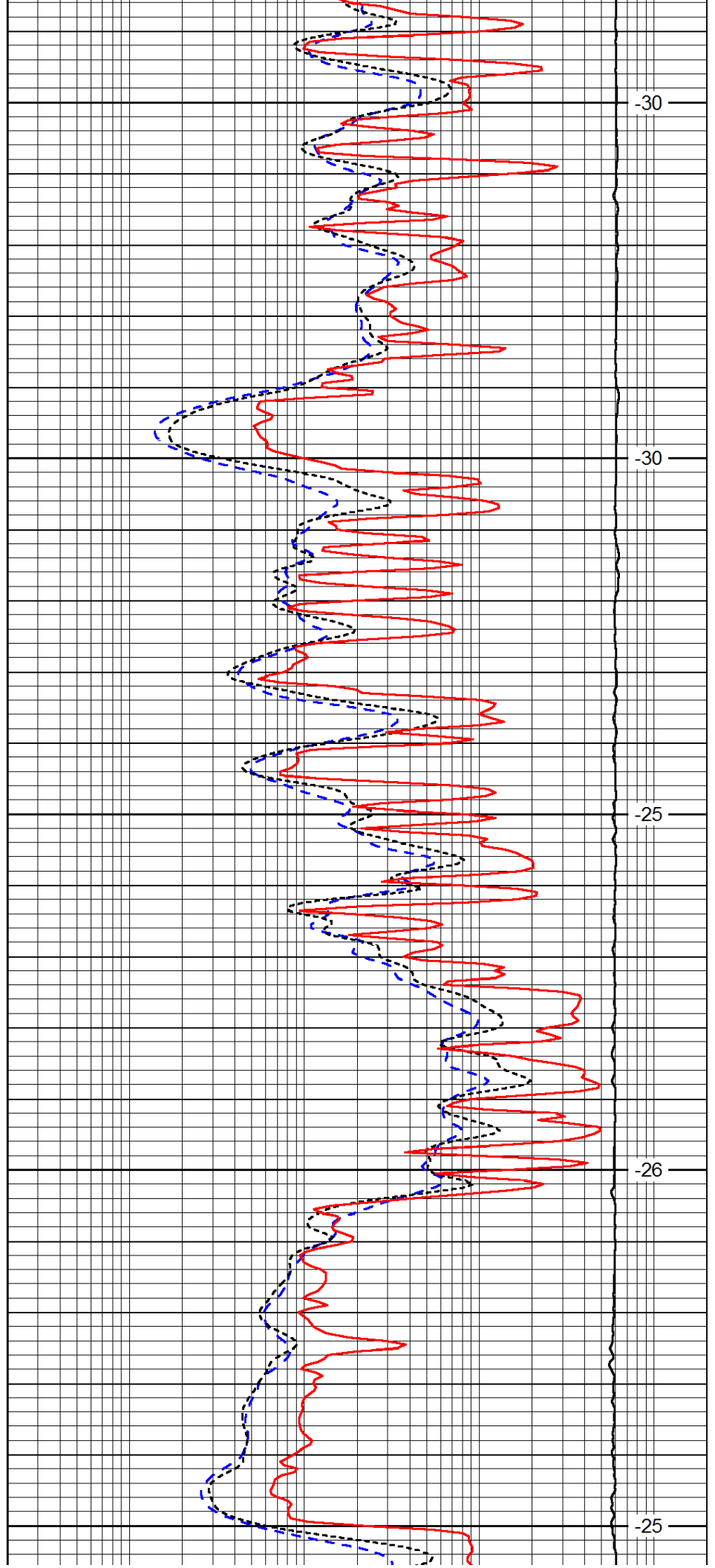
4400

4450

4500

4550

4600



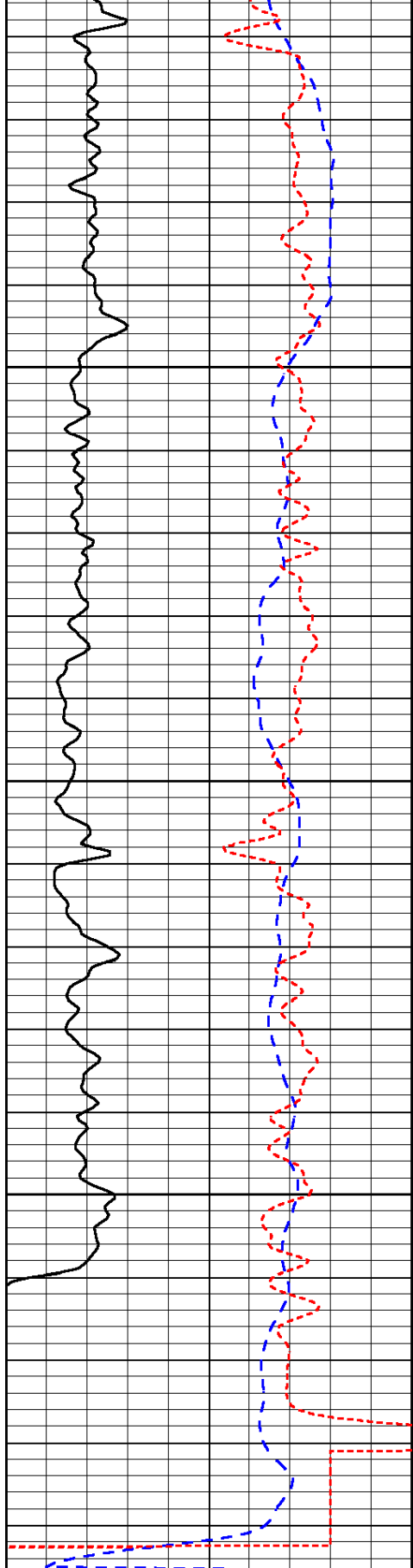
-30

-30

-25

-26

-25

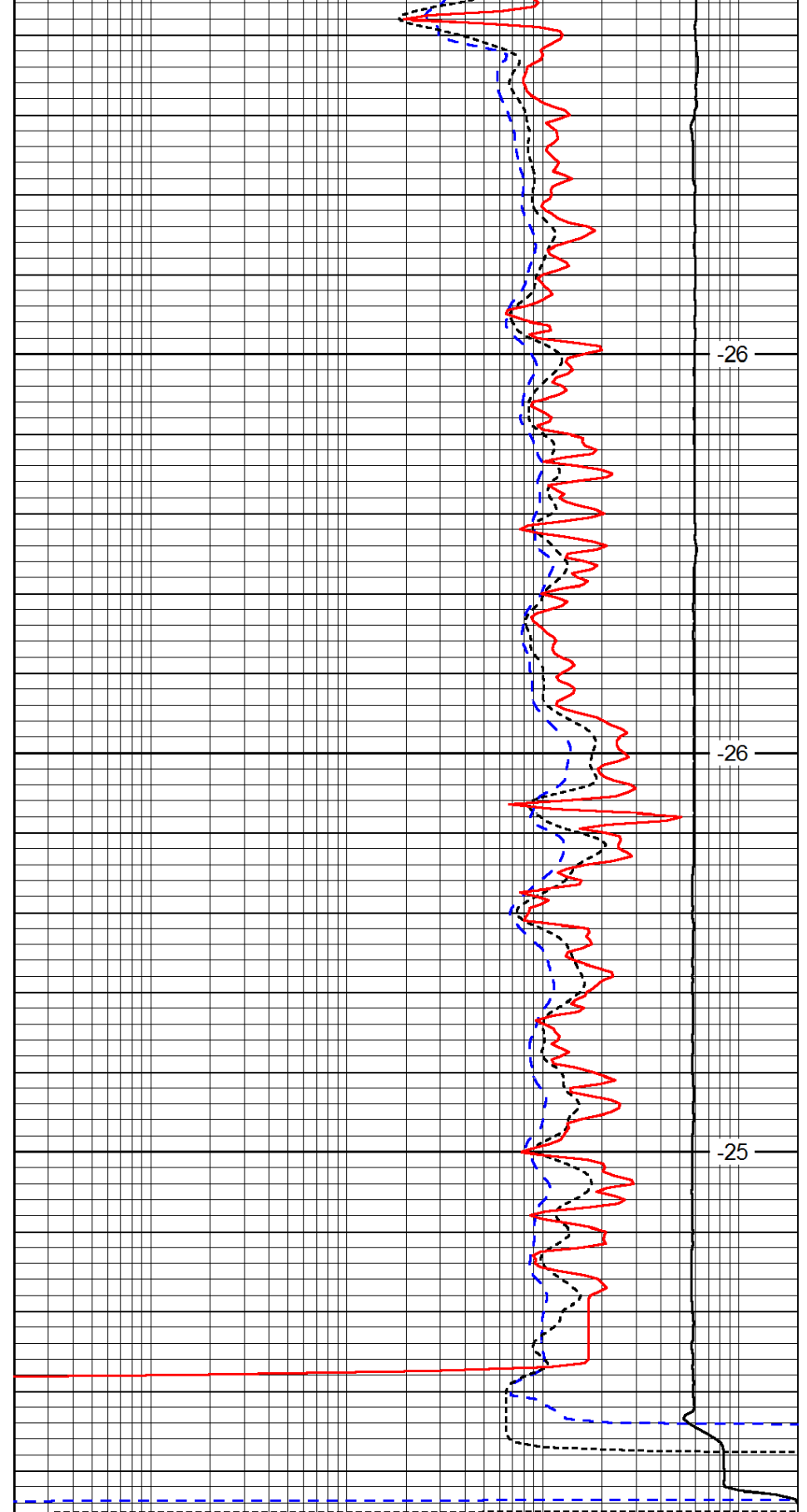


0	Gamma Ray	150
-200	SP (mV)	0
-160	RxoRt	40

4650

4700

4750



-26

-26

-25

0.2	Deep Resistivity	2000
0.2	Medium Resistivity	2000
0.2	Shallow Resistivity	2000
15000	Line Tension	0

LSPD