



Pioneer Energy Services

## Dual Compensated Porosity Log

15-109-21114-00-00

API No.

Company **New Gulf Operating, LLC**  
 Well **Byron #1-31**  
 Field  
 County **Logan** State **Kansas**

Location **1295' FSL & 1572' FEL**  
 Sec: **31** Twp: **14S** Rge: **34W**

Permanent Datum **Ground Level** Elevation **3019**  
 Log Measured From **Kelly Bushing** 10 Ft. Above Perm. Datum  
 Drilling Measured From **Kelly Bushing**

Other Services  
 DIL  
 MEL  
 Elevation  
 K.B. 3029  
 D.F.  
 G.L. 3019

Date	8/20/2012	
Run Number	One	
Type Log	CNL / CDL	
Depth Driller	4785	
Depth Logger	4784	
Bottom Logged Interval	4763	
Top Logged Interval	3450	
Type Fluid In Hole	Chemical	
Salinity, PPM CL	8000	
Density	9.3	
Level	Full	
Max. Rec. Temp. F	126	
Operating Rig Time	5 Hours	
Equipment -- Location	91 Hays	
Recorded By	D. Schmidt	
Witnessed By	John Goldsmith	

Borehole Record				Casing Record			
Run No.	Bit	From	To	Size	Wgt.	From	To
1	12.25	00	262	8.625	24#	00	262
2	7.875	262	4785				

<<< Fold Here >>>

All interpretations are opinions based on inferences from electrical or other measurements and we cannot and do not guarantee the accuracy or correctness of any interpretation, and we shall not, except in the case of gross or willful negligence on our part, be liable or responsible for any loss, costs, damages, or expenses incurred or sustained by anyone resulting from any interpretation made by any of our officers, agents or employees. These interpretations are also subject to our general terms and conditions set out in our current Price Schedule.

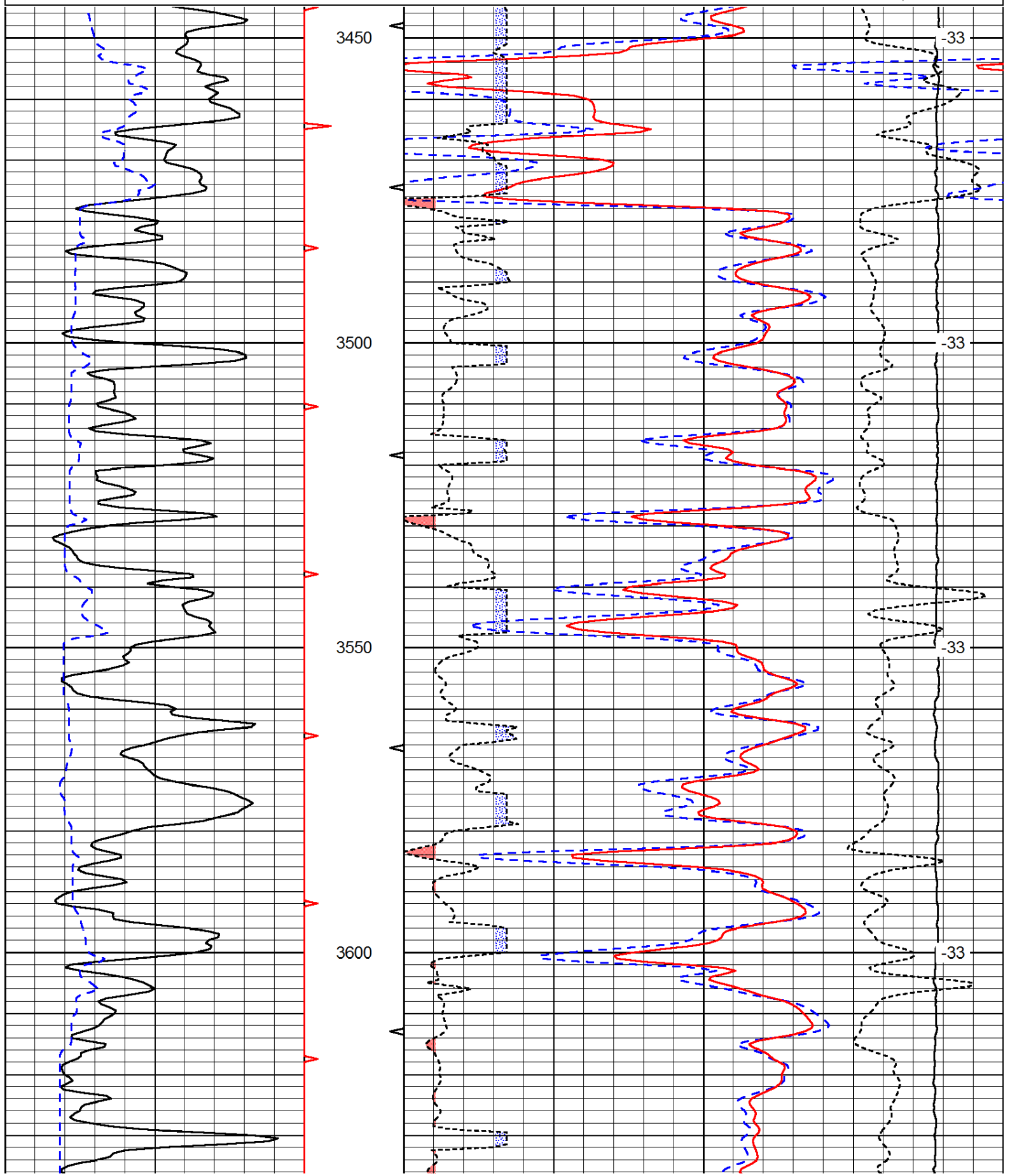
### Comments

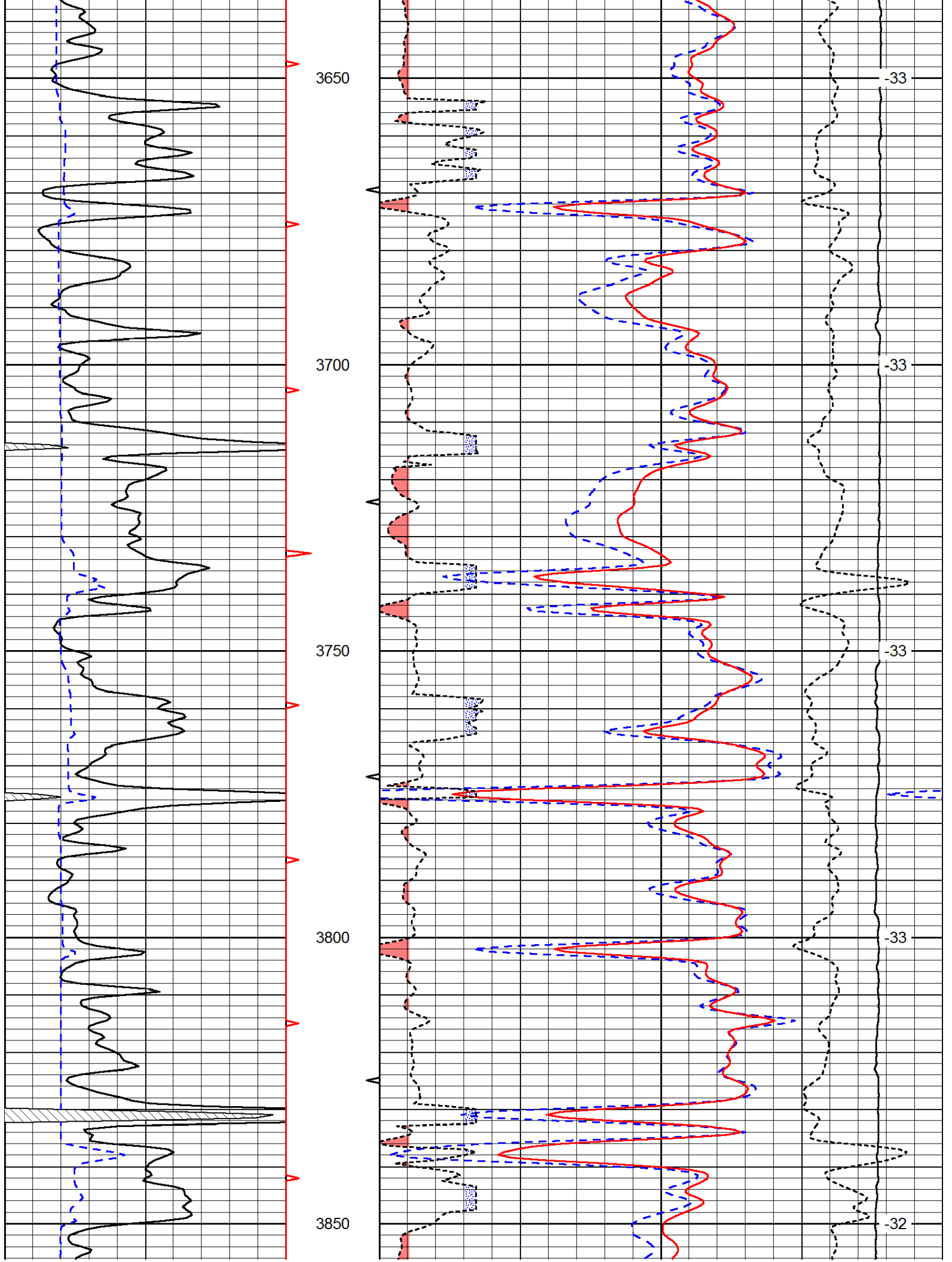
Thank you for using Pioneer Energy Services  
[www.pioneerenergy.com](http://www.pioneerenergy.com)  
 785 625 3858  
 Russell Springs,  
 1 East to Rd 270, 8 /14 South to Gold Road,  
 2 1/2 East to location

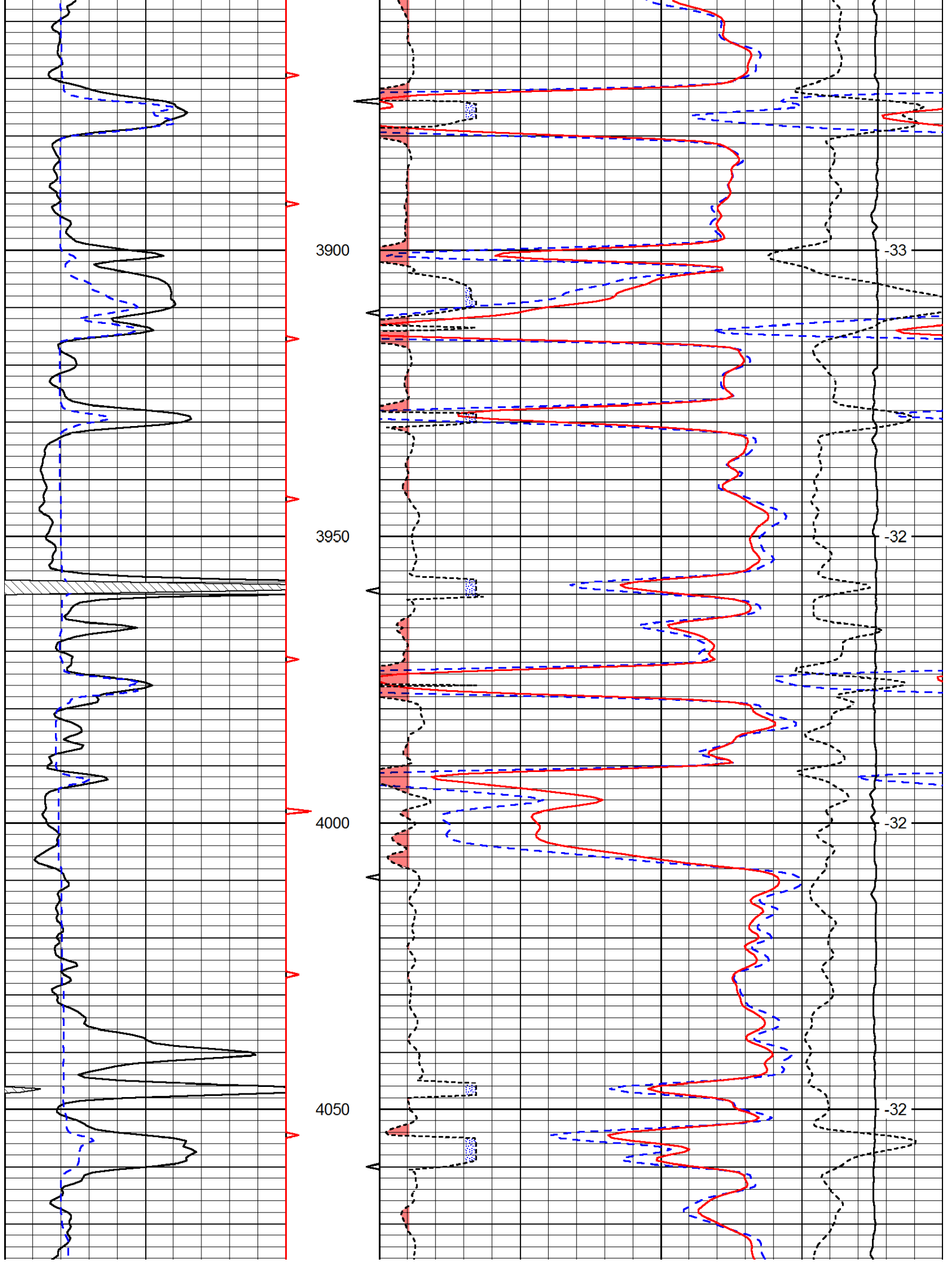
Database File: c:\warrior\data\new gulf\_byron #1-31\newgulf\_082012hd.db  
 Dataset Pathname: dil/ngstack  
 Presentation Format: cdl  
 Dataset Creation: Mon Aug 20 16:23:12 2012  
 Charted by: Depth in Feet scaled 1:240

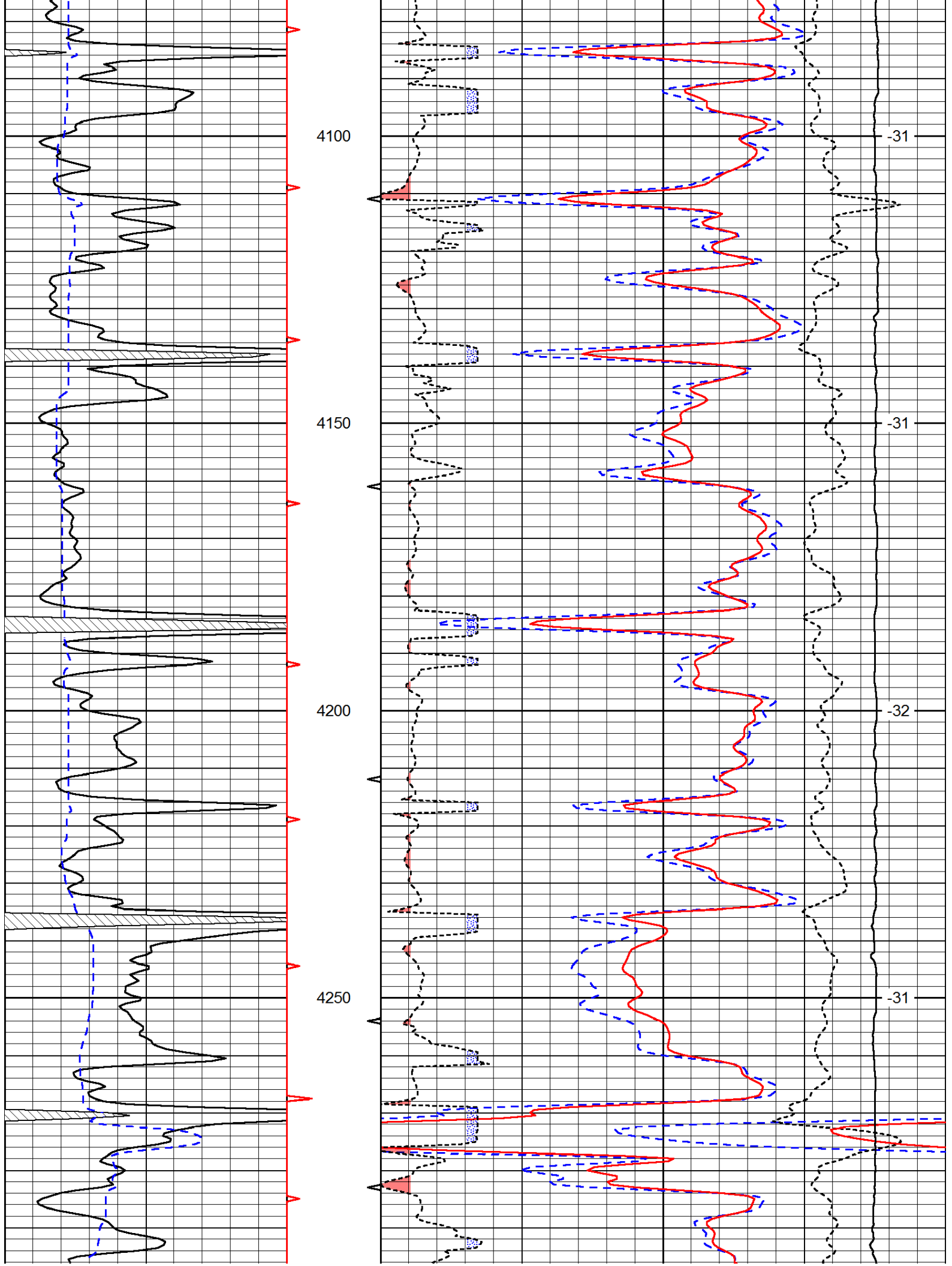
0	Gamma Ray	150
6	Caliper (GAPI)	16

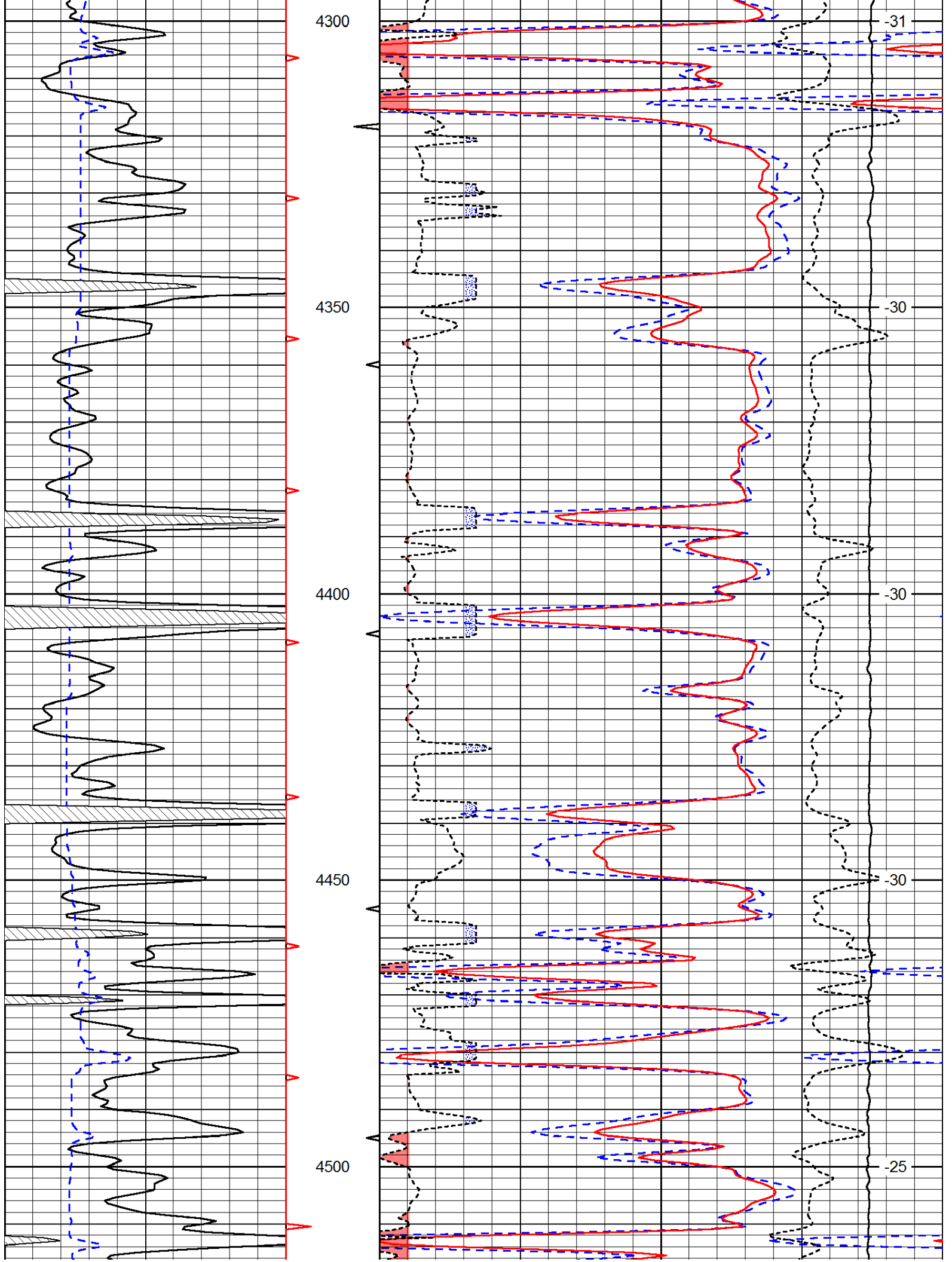
30	Compensated Density		-10
2	Bulk Density		3
15000	Line Tension		0
2.625	DGA	3.425	-0.25
Correction			0.25
LSPD			

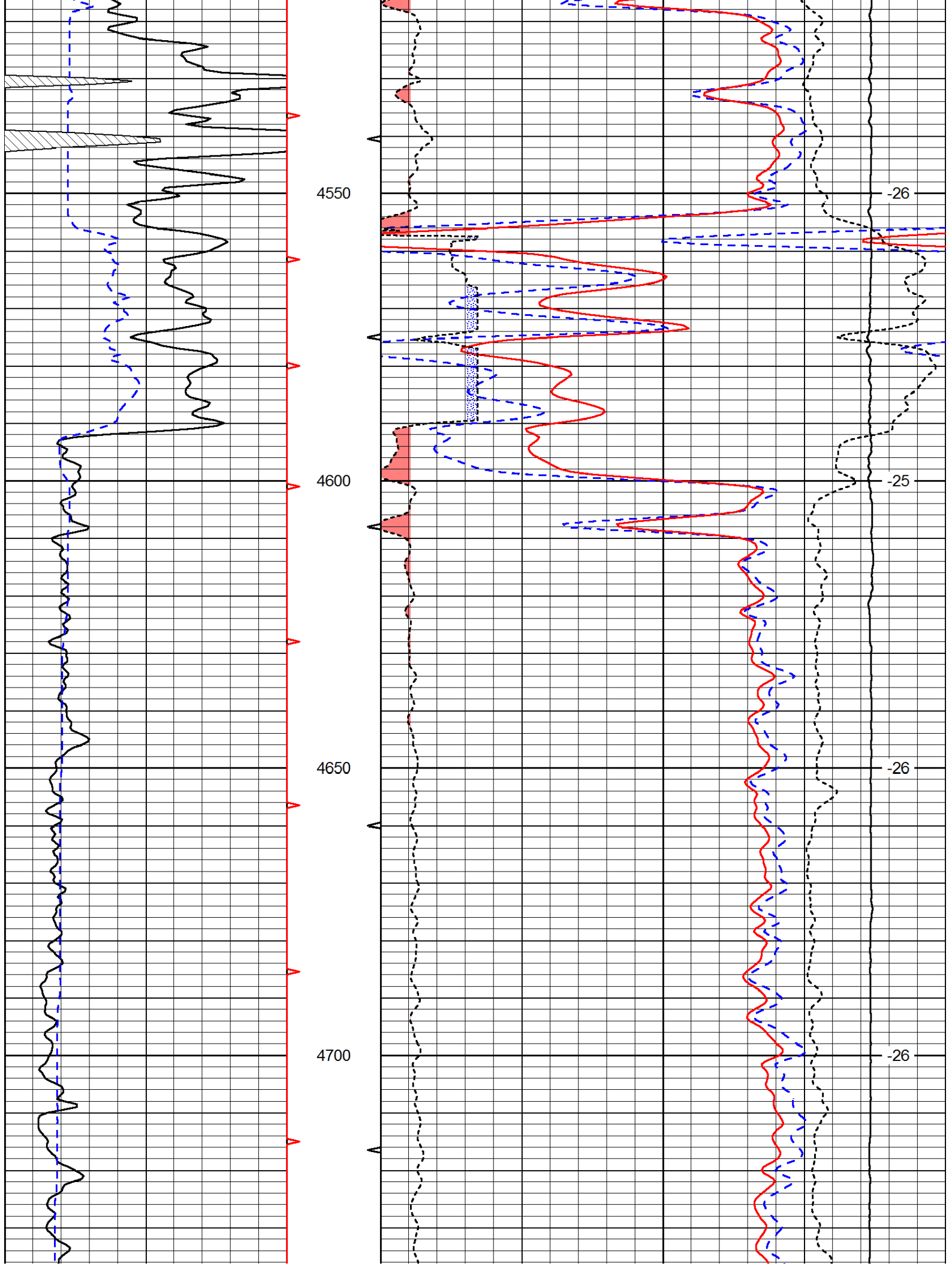


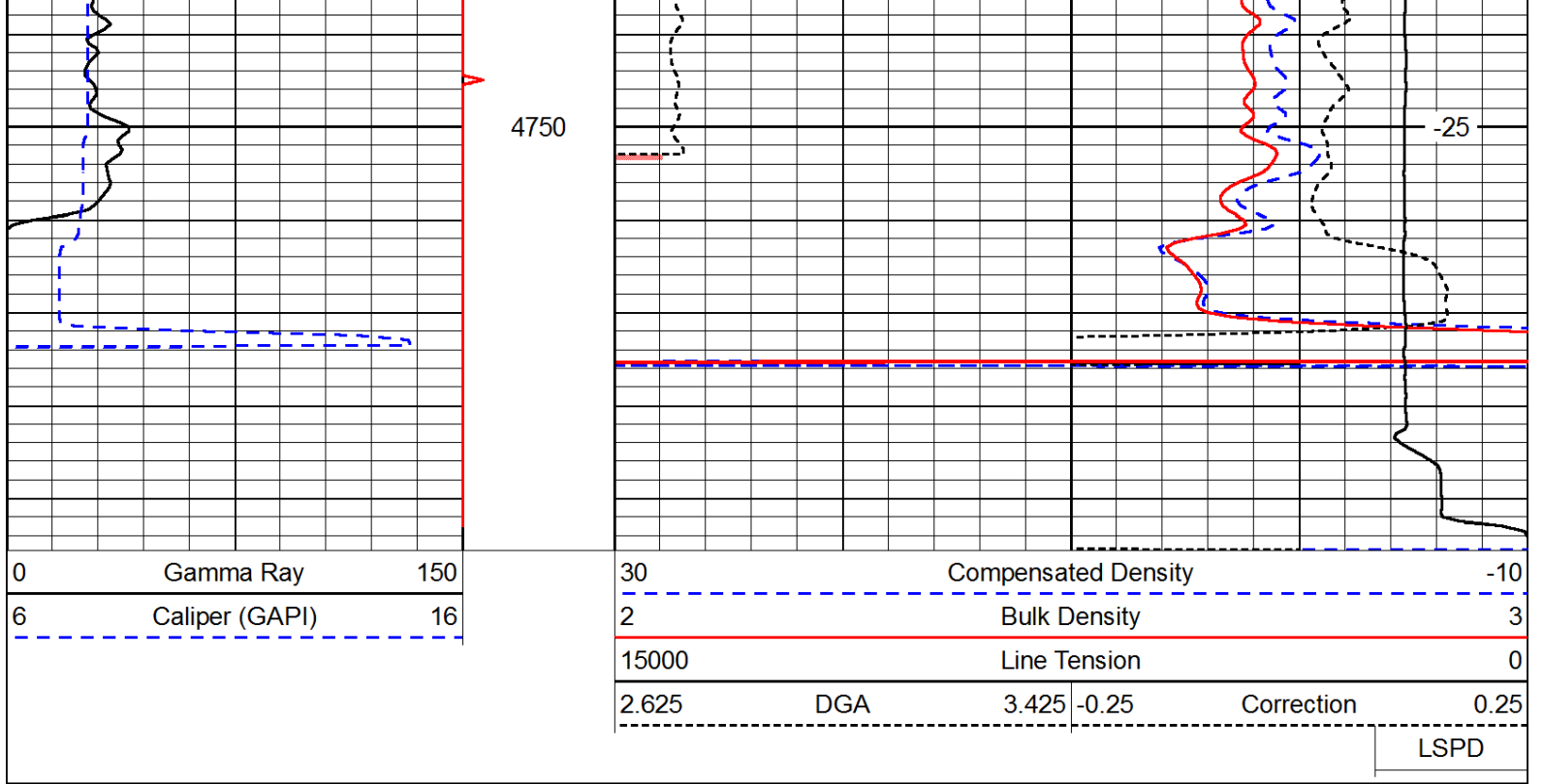












Database File: c:\warrior\data\new gulf\_byron #1-31\newgulf\_082012hd.db  
 Dataset Pathname: dil/ngstack  
 Presentation Format: cndlspec  
 Dataset Creation: Mon Aug 20 16:23:12 2012  
 Charted by: Depth in Feet scaled 1:240

