



Pioneer Energy Services

Microresistivity Log

API No.	15-165-21,997-00-00	
Company	Black Tea Oil, LLC	
Well	Rose No. 1	
Field	Wildcat	
County	Rush	State
		Kansas
Location	SE NE NW NE 360' FNL & 1,440' FEL	
Sec: 34	Twp: 18S	Rge: 16W
Other Services CNL/CDL DIL/BHCS		

Permanent Datum	Ground Level	Elevation 1979
Log Measured From	Kelly Bushing	9 Ft. Above Perm. Datum
Drilling Measured From	Kelly Bushing	
Elevation	K.B. 1988 D.F. 1979 G.L. 1979	

Date	10/23/2012
Run Number	Two
Depth Driller	3695
Depth Logger	3689
Bottom Logged Interval	3688
Top Log Interval	2900
Casing Driller	8.625 @ 1046
Casing Logger	1040
Bit Size	7.875
Type Fluid in Hole	Chemical
Salinity, ppm CL	4000
Density / Viscosity	9.0 40
pH / Fluid Loss	10.0 9.6
Source of Sample	Flowline
Rm @ Meas. Temp	.30 @ 74
Rmf @ Meas. Temp	.23 @ 74
Rmc @ Meas. Temp	.41 @ 74
Source of Rmf / Rmc	Charts
Rm @ BHT	.20 @ 113
Operating Rig Time	4 Hours
Max Rec. Temp. F	113
Equipment Number	108
Location	Hays
Recorded By	J. Long
Witnessed By	Marc Downing
	Chris Leiker

<<< Fold Here >>>

All interpretations are opinions based on inferences from electrical or other measurements and we cannot and do not guarantee the accuracy or correctness of any interpretation, and we shall not, except in the case of gross or willful negligence on our part, be liable or responsible for any loss, costs, damages, or expenses incurred or sustained by anyone resulting from any interpretation made by any of our officers, agents or employees. These interpretations are also subject to our general terms and conditions set out in our current Price Schedule.

Comments

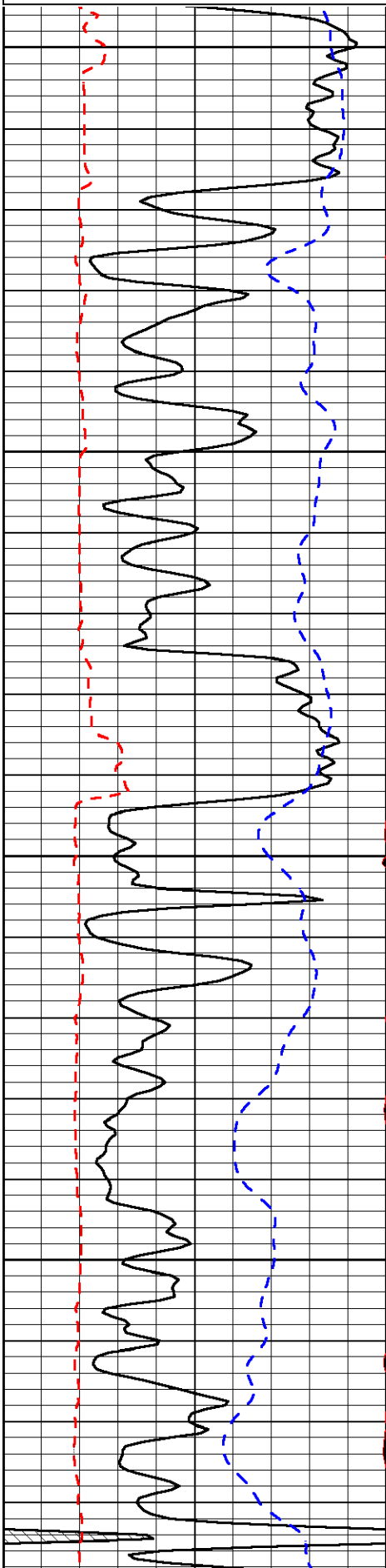
Thank you for using Log-Tech, Inc.
(785) 625-3858

Rush Center, 12 East to 370 Road, 1 South, 3/4 East, South Into

Database File:	blacktea_rose_1hd.db
Dataset Pathname:	dil/blackstck
Presentation Format:	micro
Dataset Creation:	Tue Oct 23 15:05:40 2012
Charted by:	Depth in Feet scaled 1:240

0	Gamma Ray	150
6	MCAL (GAPI)	16
2.875	Mud Cake (GAPI)	7.875
-200	SP	0

0	Micro Inverse 1 X 1	40
0	Micro Normal 2"	40
10000	Line Weight	0
		LSPD

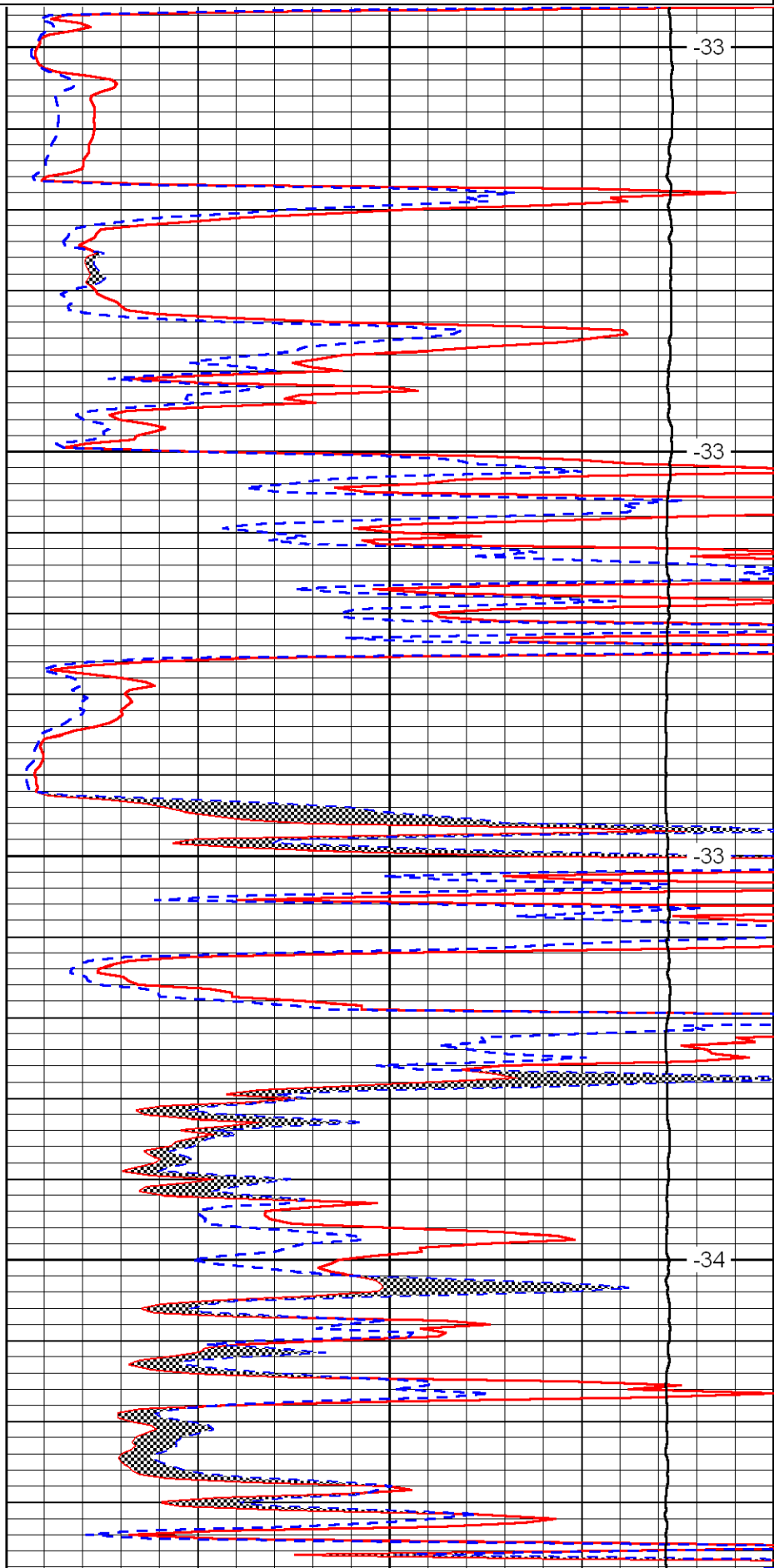


2900

2950

3000

3050

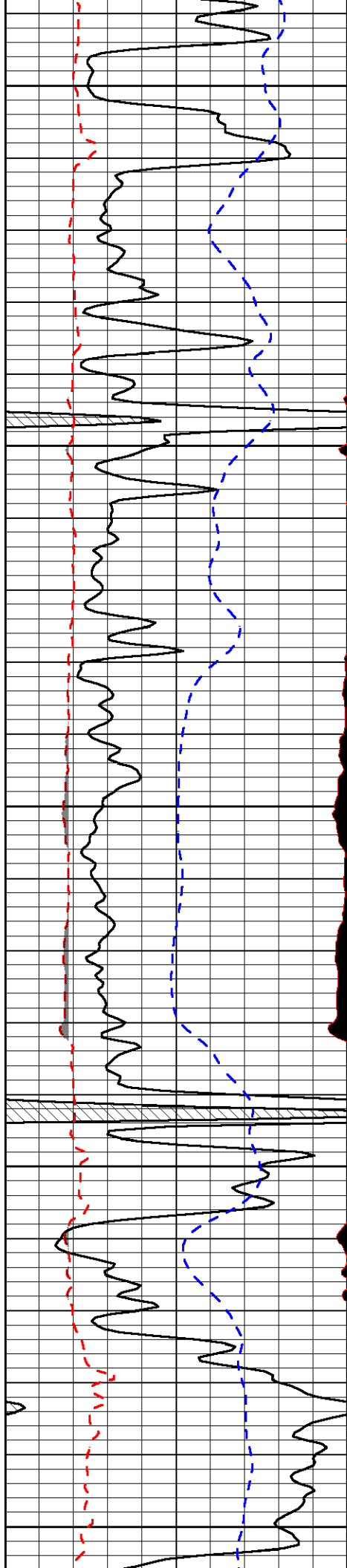


-33

-33

-33

-34



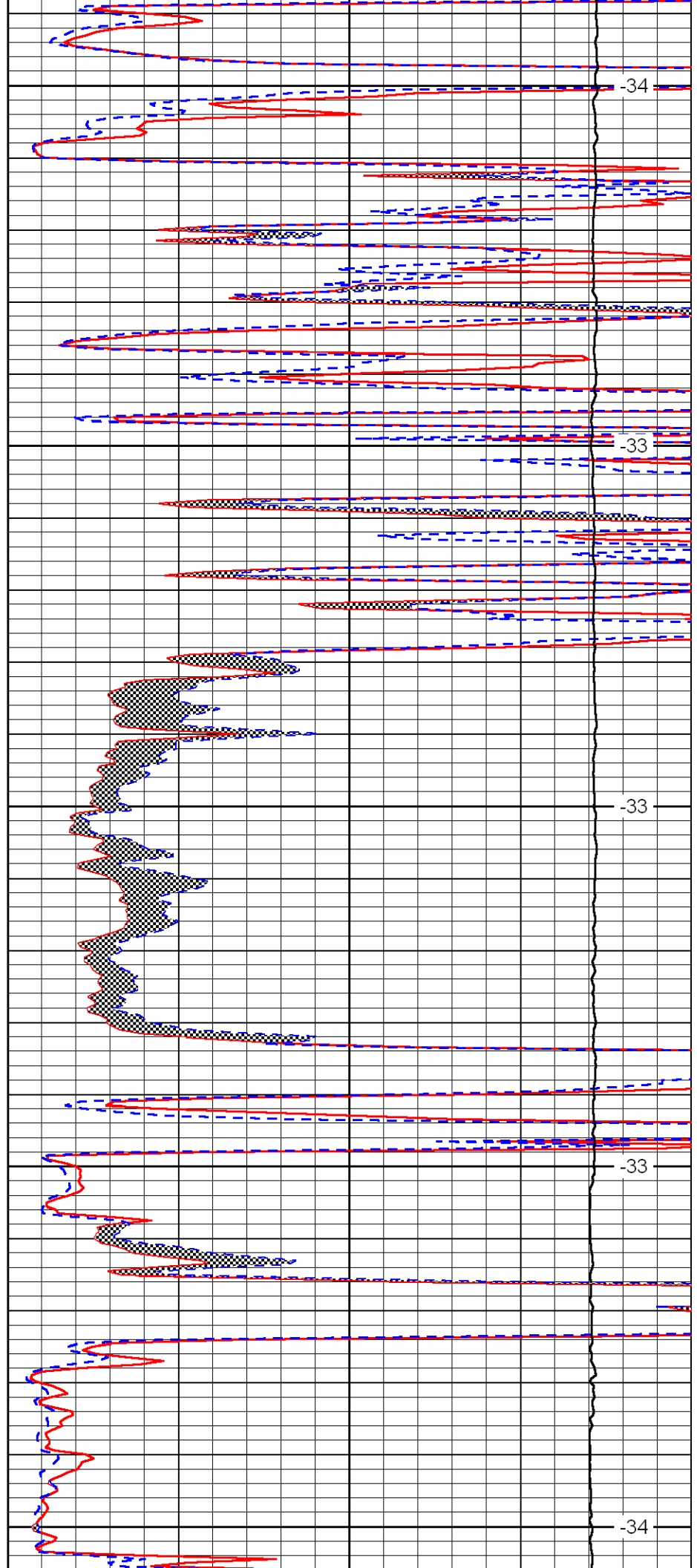
3100

3150

3200

3250

3300



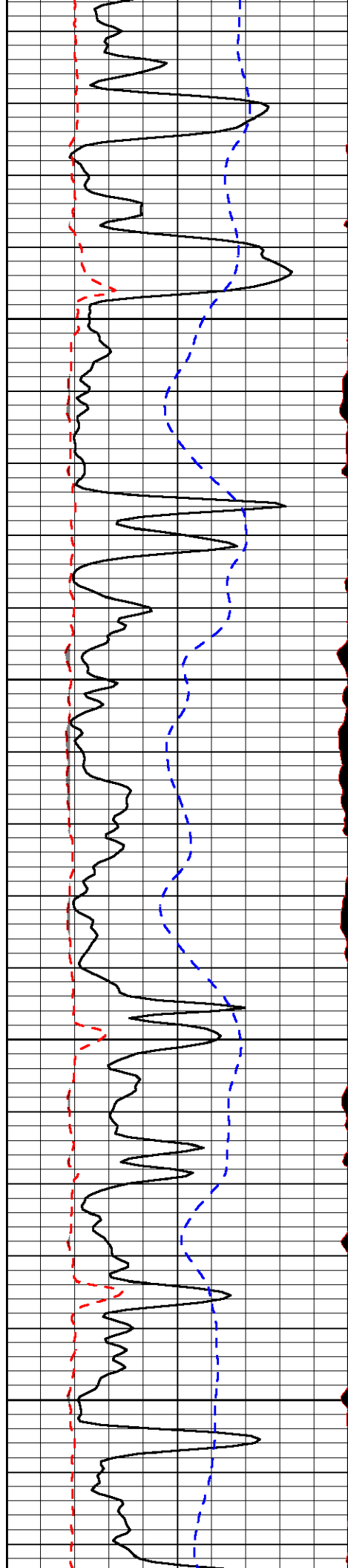
-34

-33

-33

-33

-34

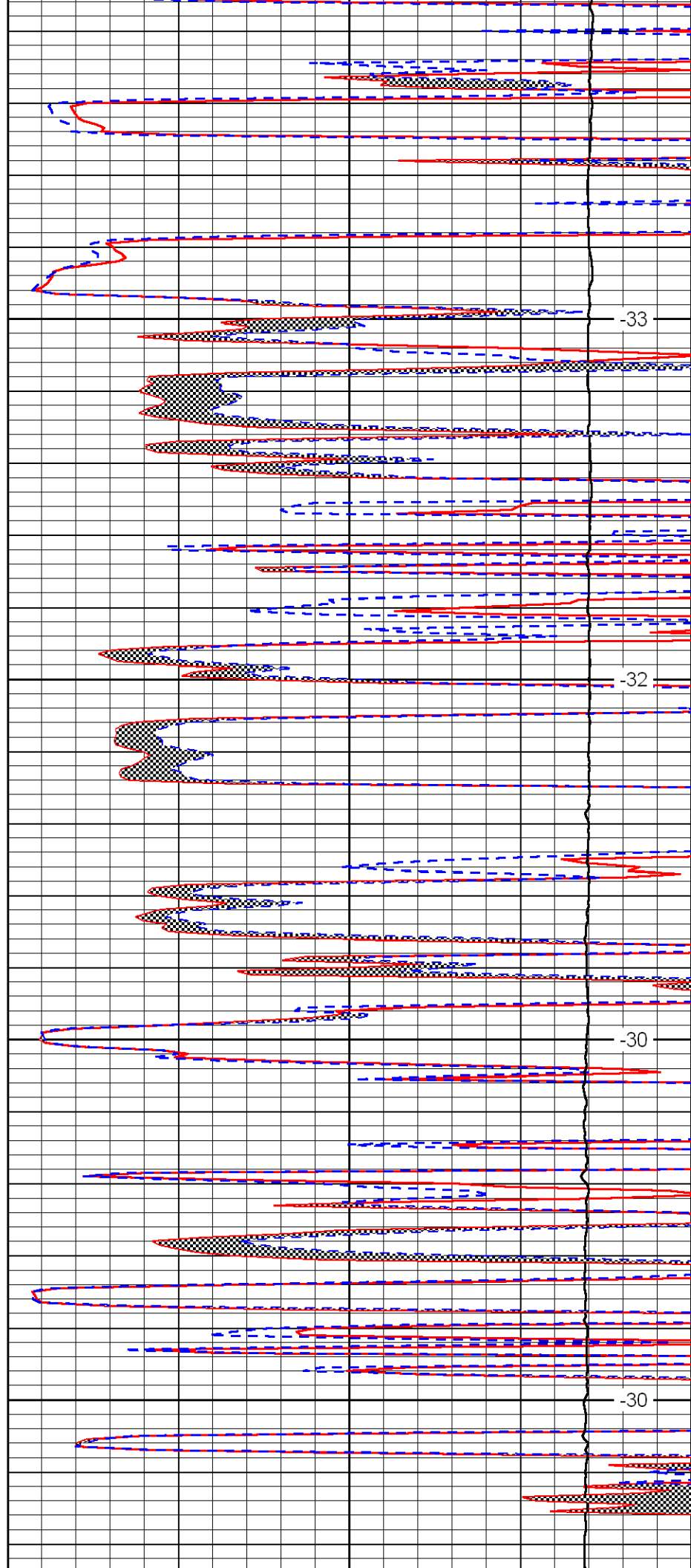


3350

3400

3450

3500

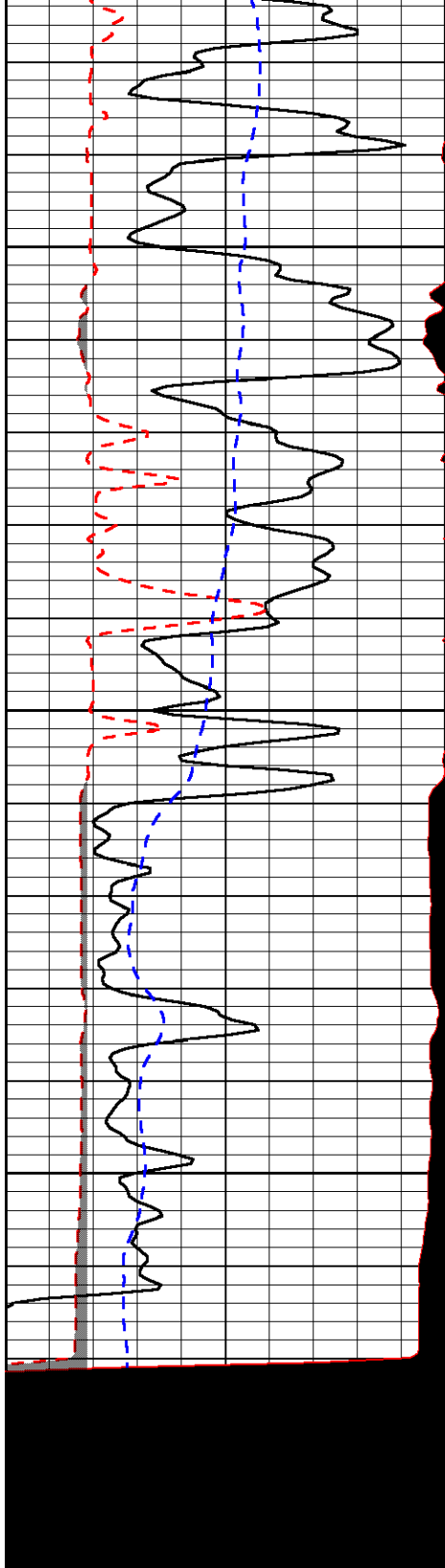


-33

-32

-30

-30

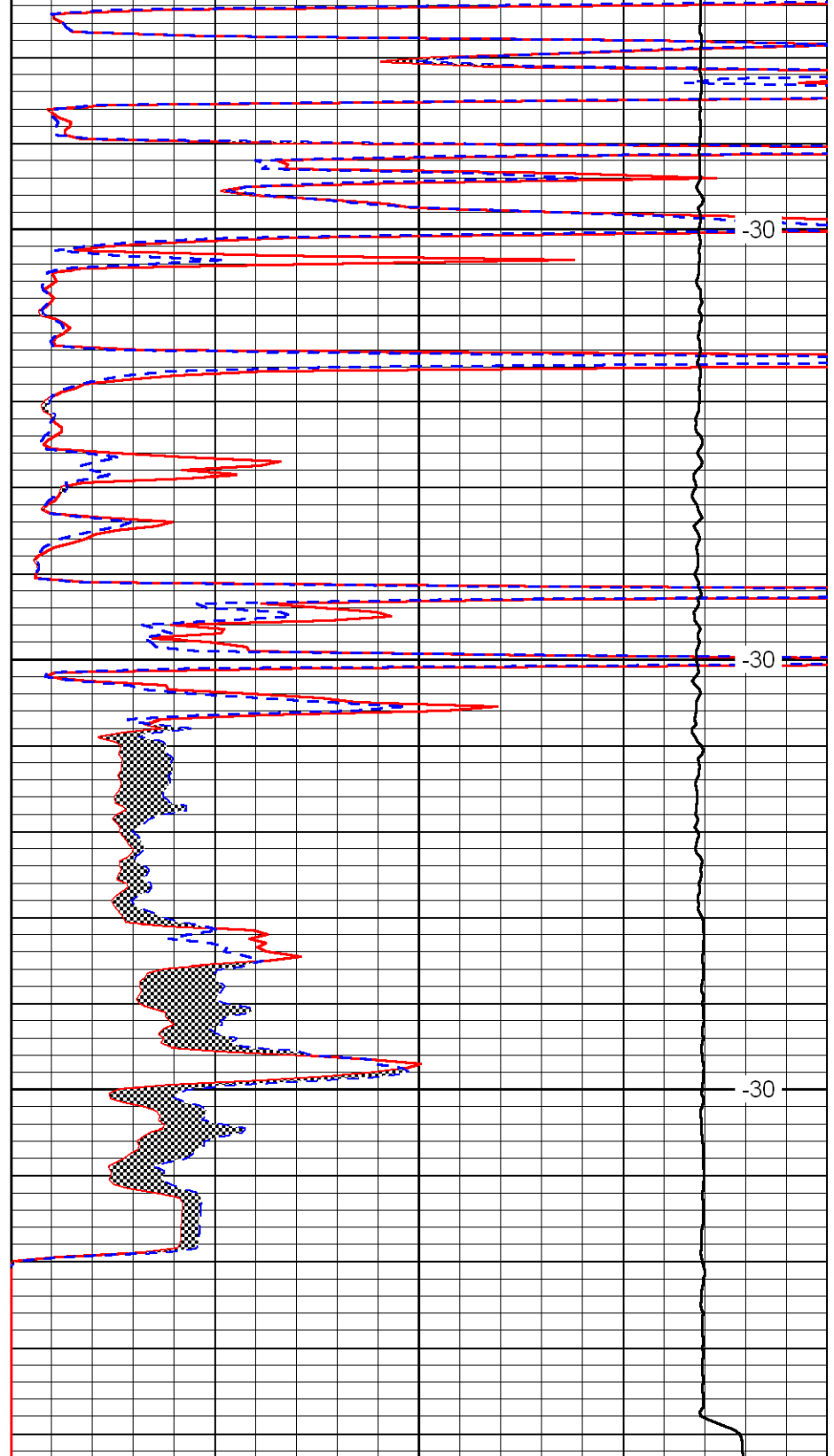


3550

3600

3650

0	Gamma Ray	150
6	MCAL (GAPI)	16
2.875	Mud Cake (GAPI)	7.875
-200	SP	0



-30

-30

-30

0	Micro Inverse 1 X 1	40
0	Micro Normal 2''	40
10000	Line Weight	0

LSPD