



Pioneer Energy Services

# Dual Induction Log

API No.	15-165-21,999-00-00	
Company	Black Tea Oil, LLC	
Well	Rose No. 3	
Field	Wildcat	
County	Rush	State
Location	810' FNL & 2640' FEL	
	Sec: 34	Twp: 18 S Rge: 16 W
Permanent Datum	Ground Level	Elevation 1994
Log Measured From	Kelly Bushing	7 Ft. Above Perm. Datum
Drilling Measured From	Kelly Bushing	
		Other Services CNL/CDL MEL
		Elevation K.B. 2001 D.F. 1994 G.L. 1994

Date	11/10/2012
Run Number	One
Depth Driller	3701
Depth Logger	3702
Bottom Logged Interval	3701
Top Log Interval	1050
Casing Driller	8.625 @ 1051
Casing Logger	1047
Bit Size	7.875
Type Fluid in Hole	Chemical
Salinity, ppm CL	5000
Density / Viscosity	9.4 50
pH / Fluid Loss	9.0 10.8
Source of Sample	Flowline
Rm @ Meas. Temp	.40 @ 70
Rmf @ Meas. Temp	.30 @ 70
Rmc @ Meas. Temp	.54 @ 70
Source of Rmf / Rmc	Charts
Rm @ BHT	.25 @ 113
Operating Rig Time	4 Hours
Max Rec. Temp. F	113
Equipment Number	108
Location	Hays
Recorded By	D. Martin
Witnessed By	Marc Downing

<<< Fold Here >>>

All interpretations are opinions based on inferences from electrical or other measurements and we cannot and do not guarantee the accuracy or correctness of any interpretation, and we shall not, except in the case of gross or willful negligence on our part, be liable or responsible for any loss, costs, damages, or expenses incurred or sustained by anyone resulting from any interpretation made by any of our officers, agents or employees. These interpretations are also subject to our general terms and conditions set out in our current Price Schedule.

### Comments

Thank you for using Log-Tech, Inc.  
 (785) 625-3858  
 Rush Center, KS  
 12 E to 370 Rd., 1 S,  
 1/2 E, S Into

Database File: bthd.db  
 Dataset Pathname: DIL/btstk  
 Presentation Format: dil2in  
 Dataset Creation: Sat Nov 10 06:01:30 2012  
 Charted by: Depth in Feet scaled 1:600

0 Gamma Ray 150  
-200 SP 0

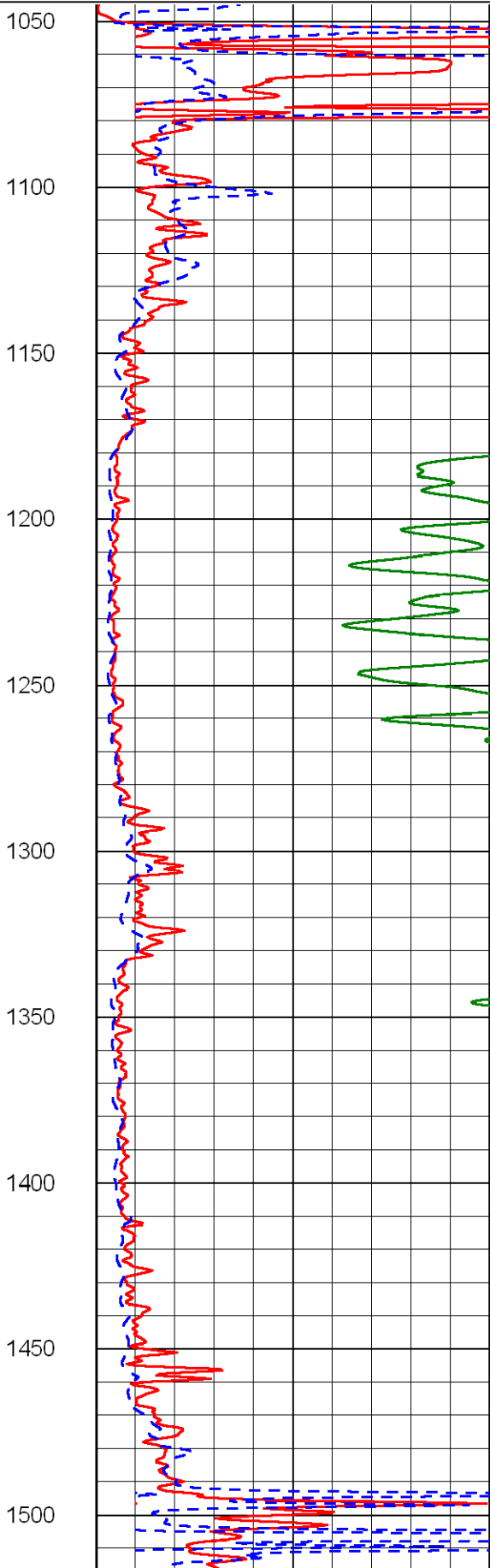
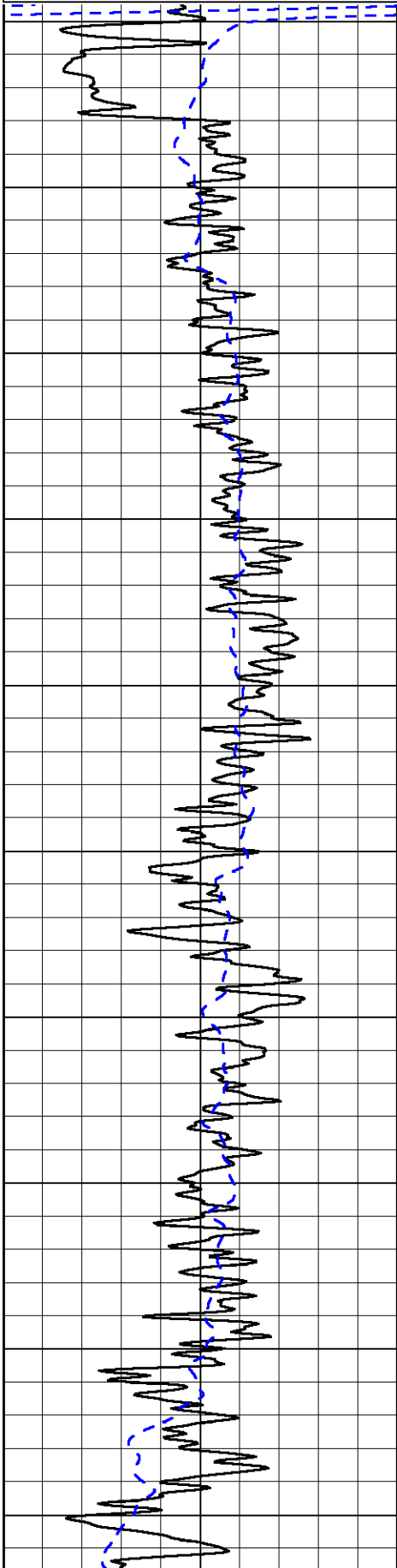
0 Shallow Resistivity 50  
0 Deep Resistivity 50

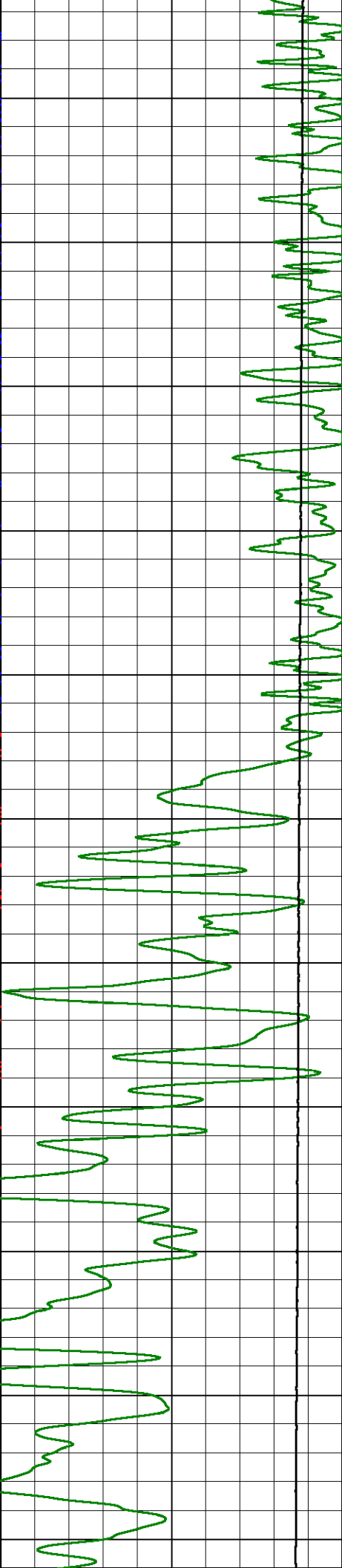
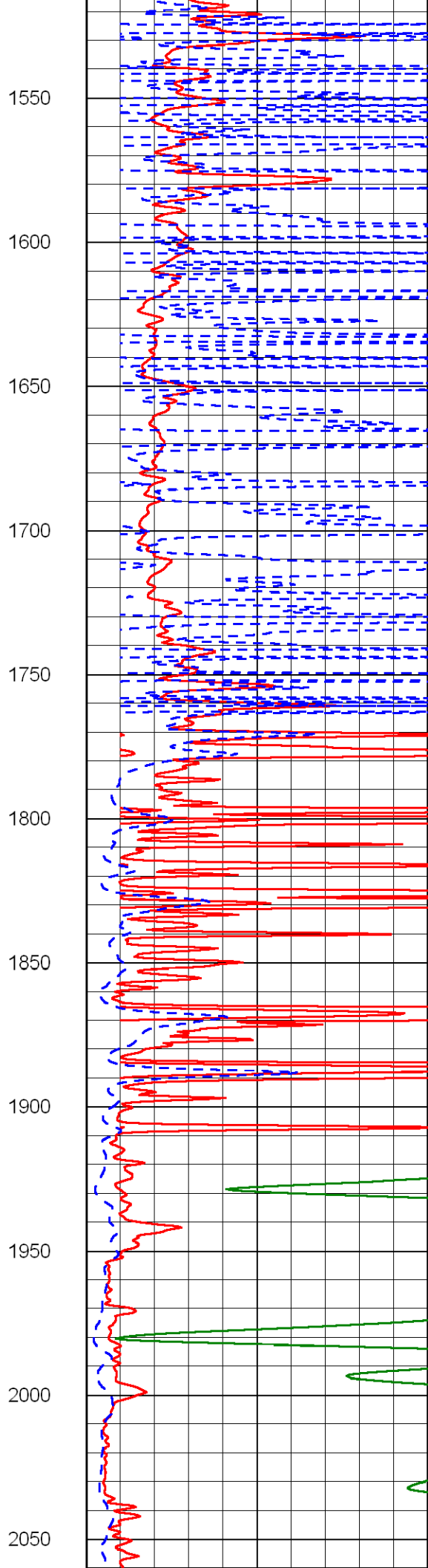
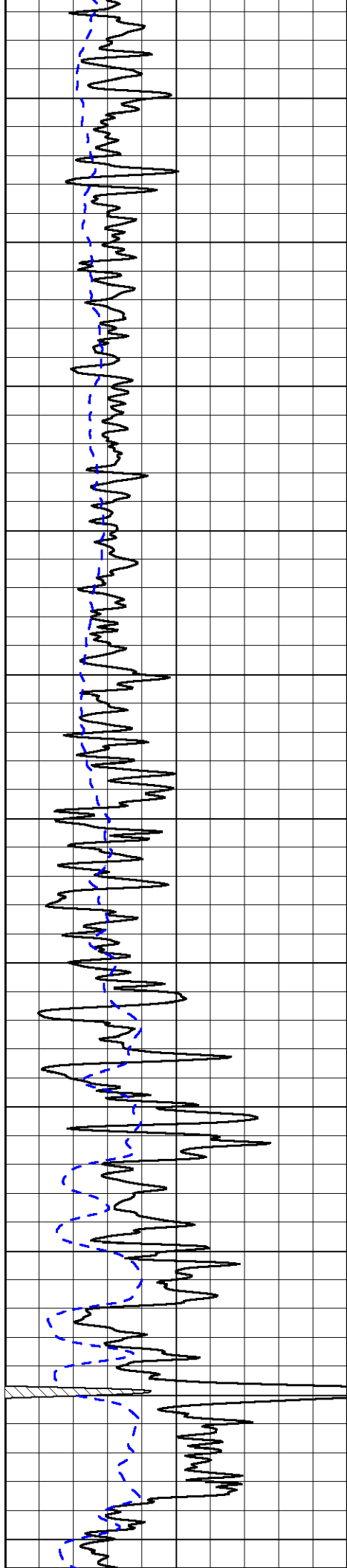
1000 Conductivity 0

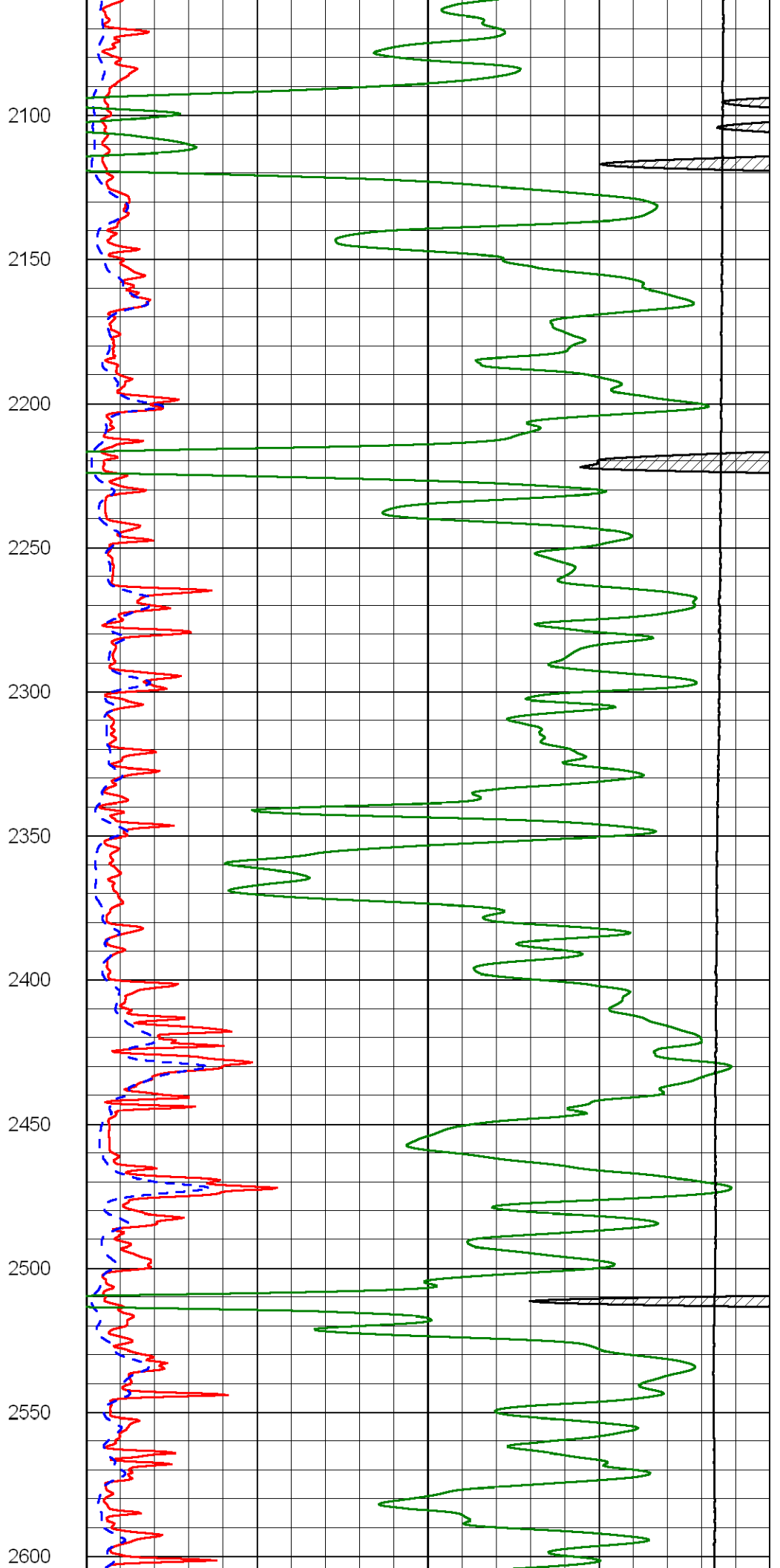
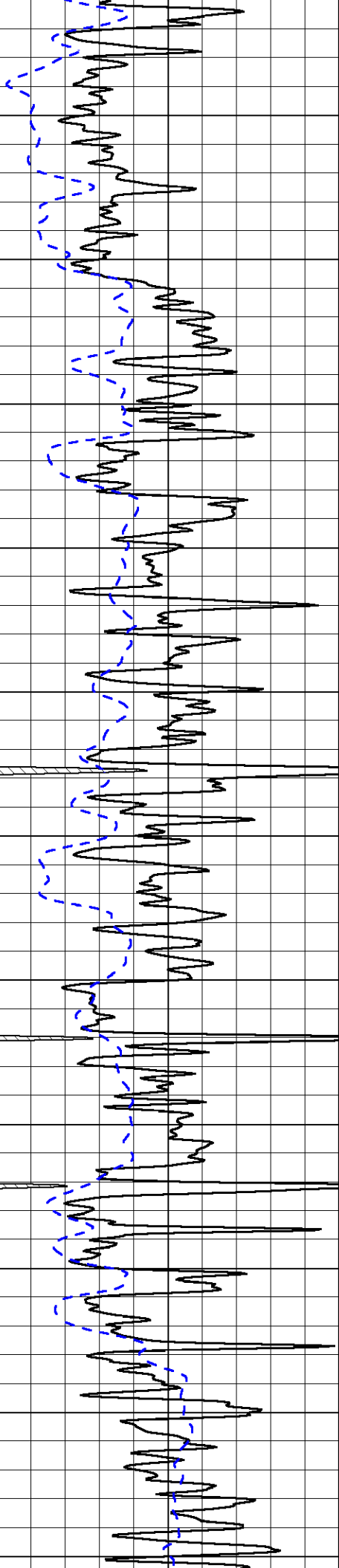
15000 Line Tension 0

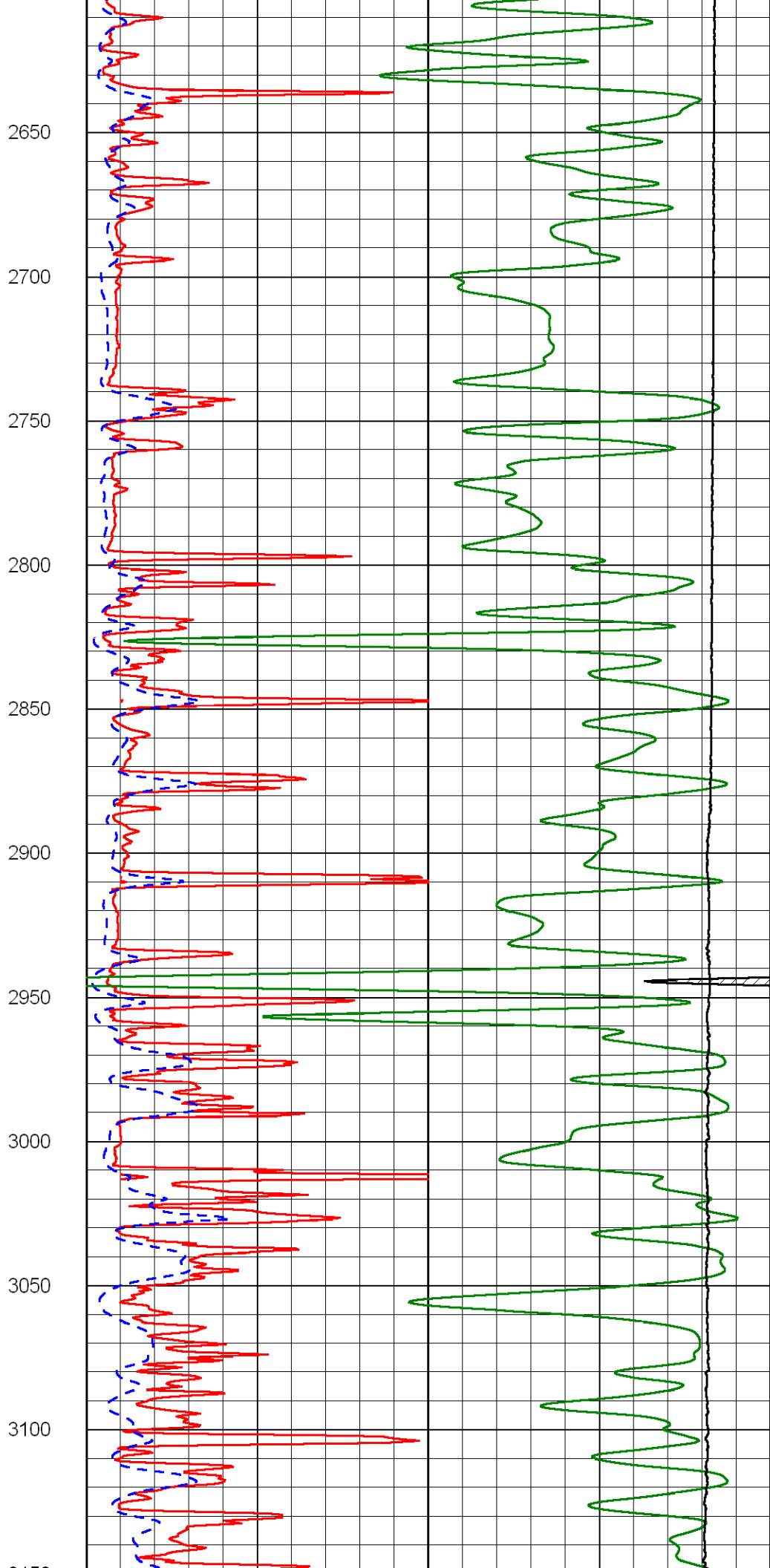
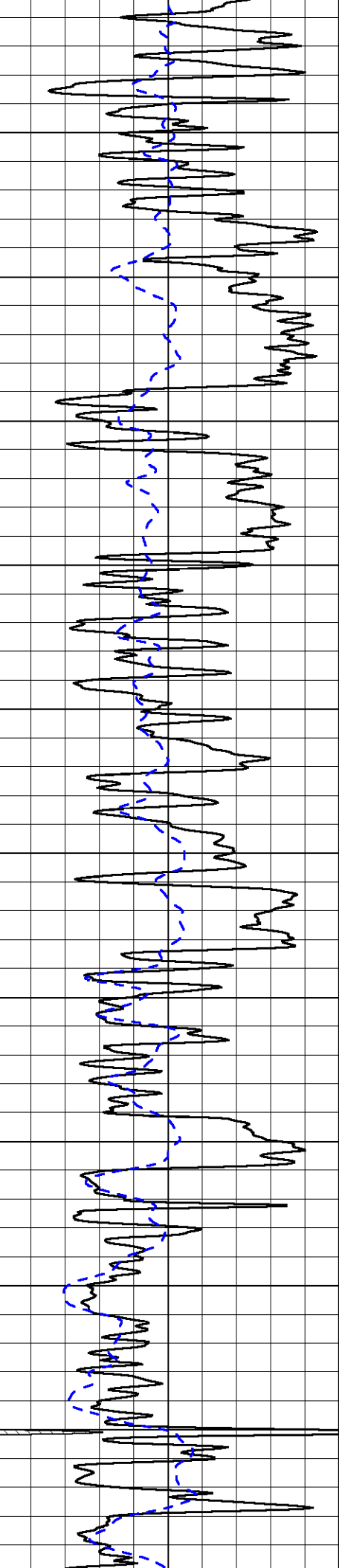
50 Shallow Resistivity 500

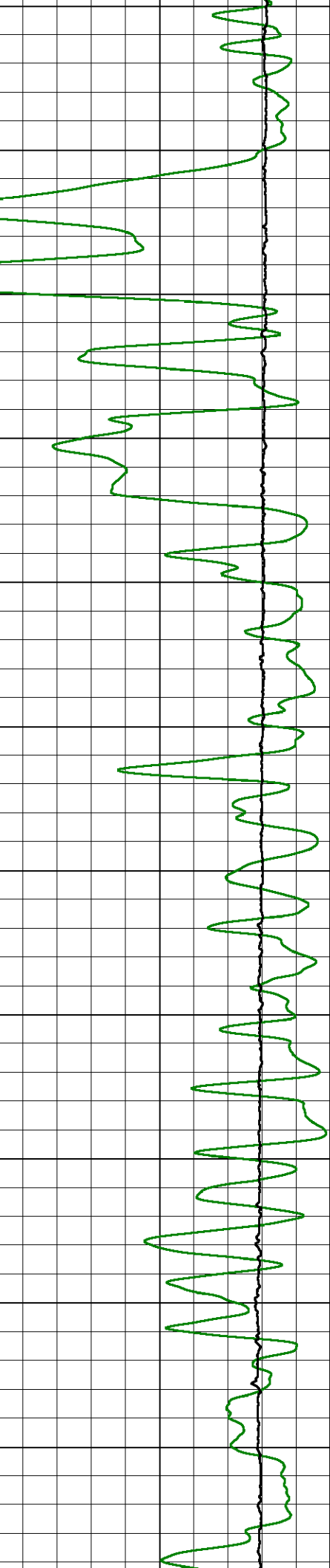
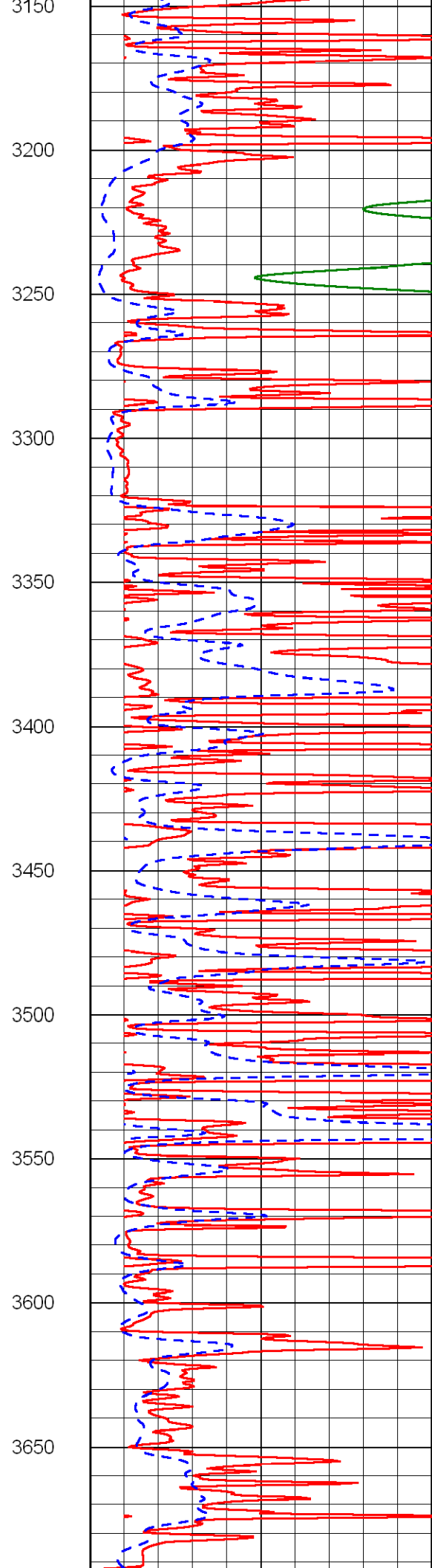
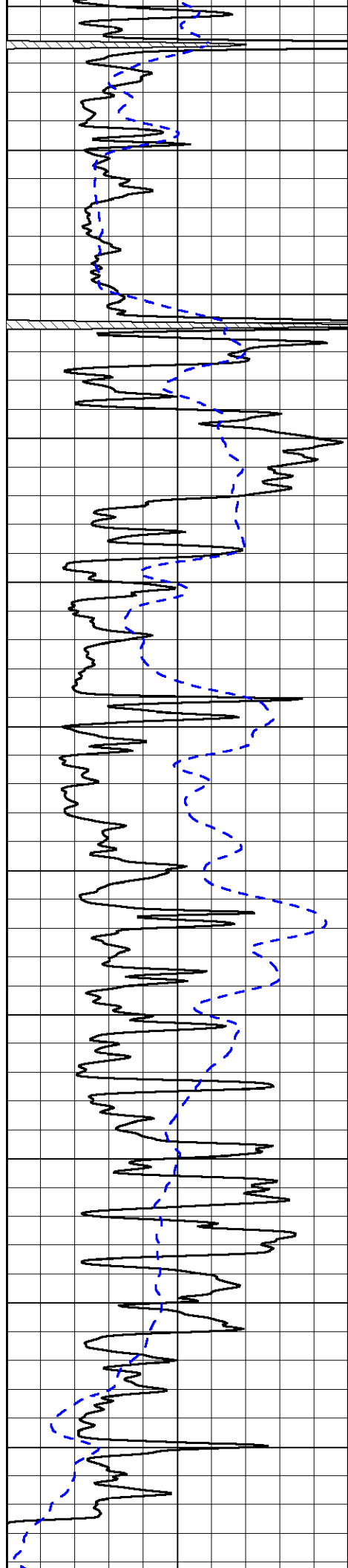
50 Deep Resistivity 500

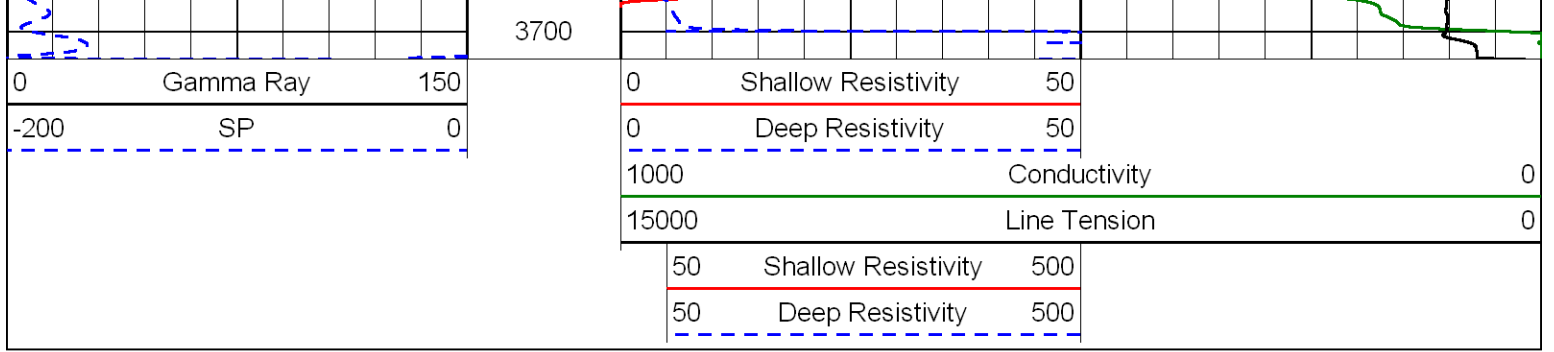




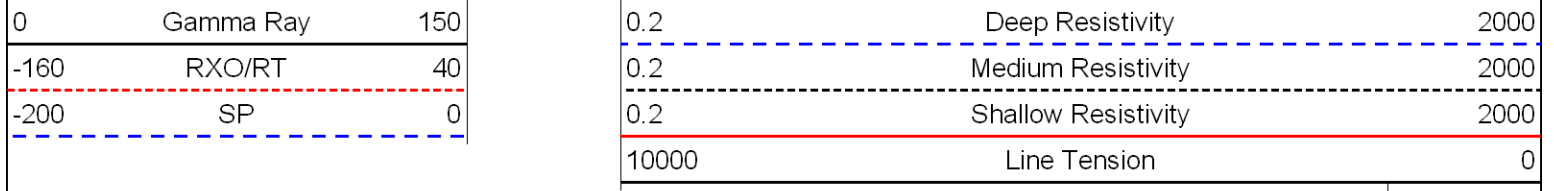
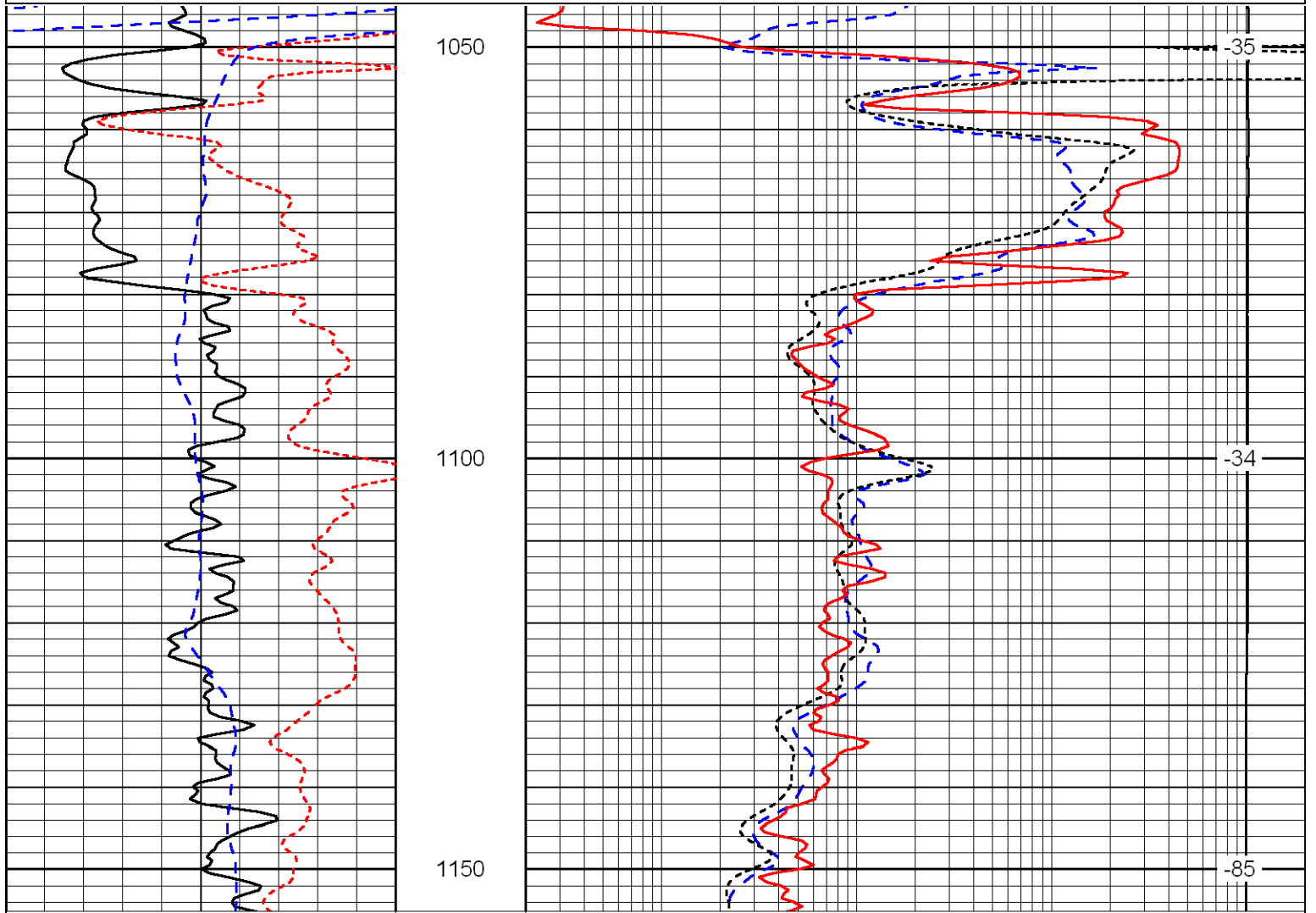
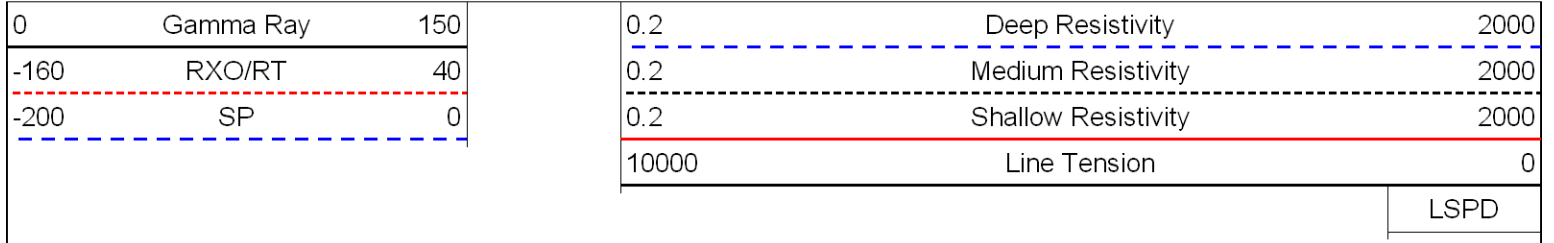








Database File:      bthd.db  
 Dataset Pathname:      DIL/btstk  
 Presentation Format:      dil  
 Dataset Creation:      Sat Nov 10 06:01:30 2012  
 Charted by:      Depth in Feet scaled 1:240

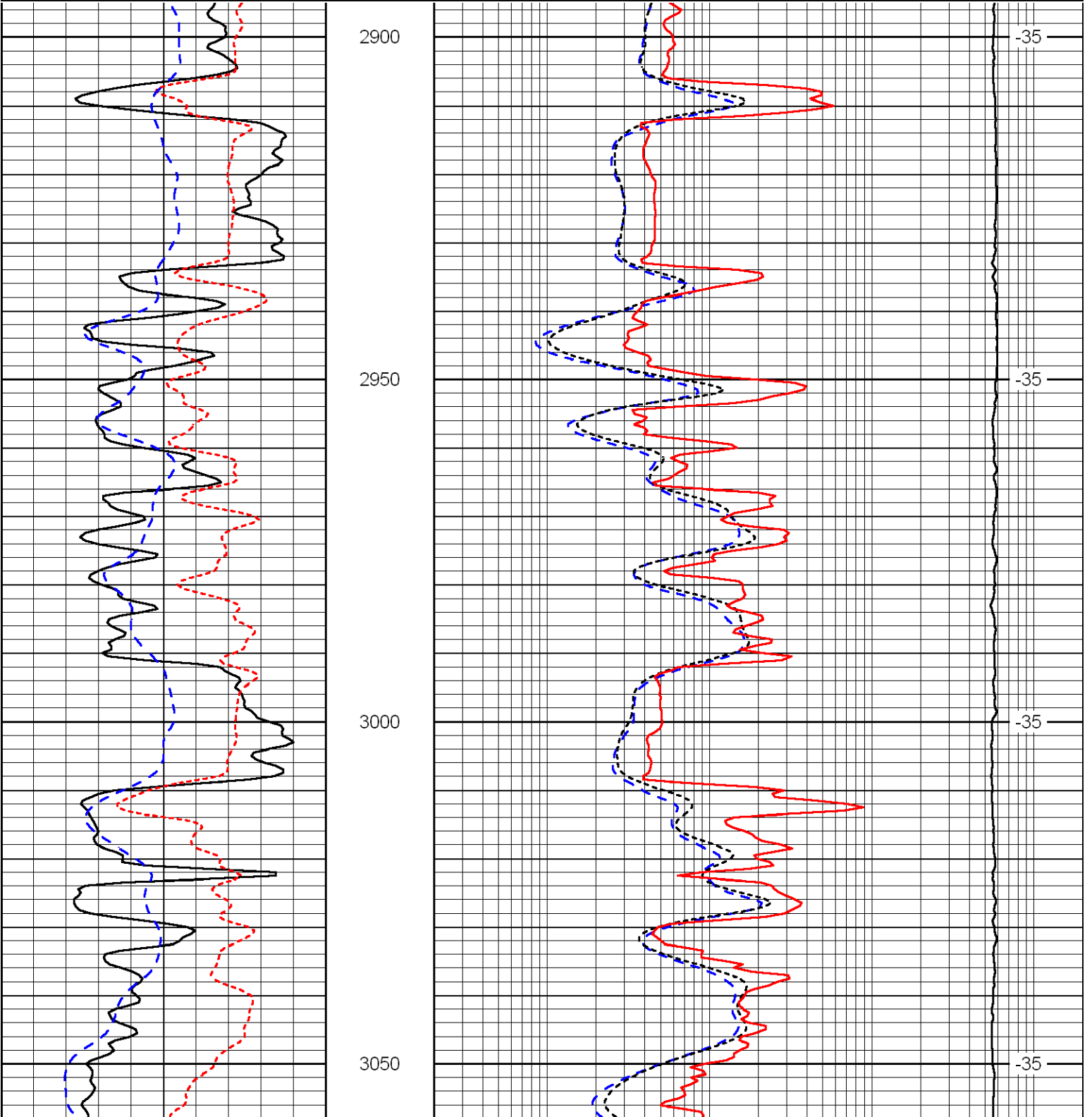


Database File: bthd.db  
Dataset Pathname: DIL/btstk  
Presentation Format: dil  
Dataset Creation: Sat Nov 10 06:01:30 2012  
Charted by: Depth in Feet scaled 1:240

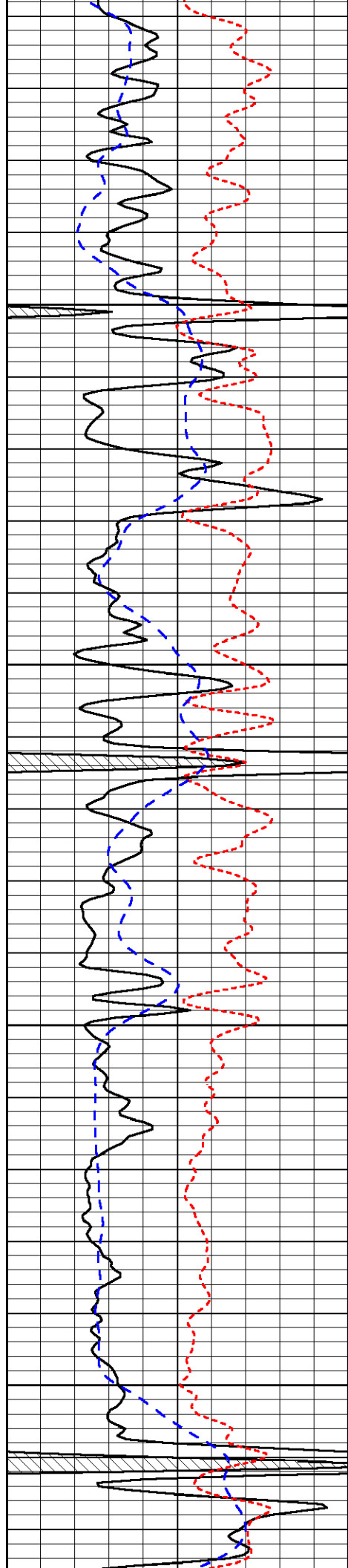
0	Gamma Ray	150
-160	RXO/RT	40
-200	SP	0

0.2	Deep Resistivity	2000
0.2	Medium Resistivity	2000
0.2	Shallow Resistivity	2000
10000	Line Tension	0

LSPD





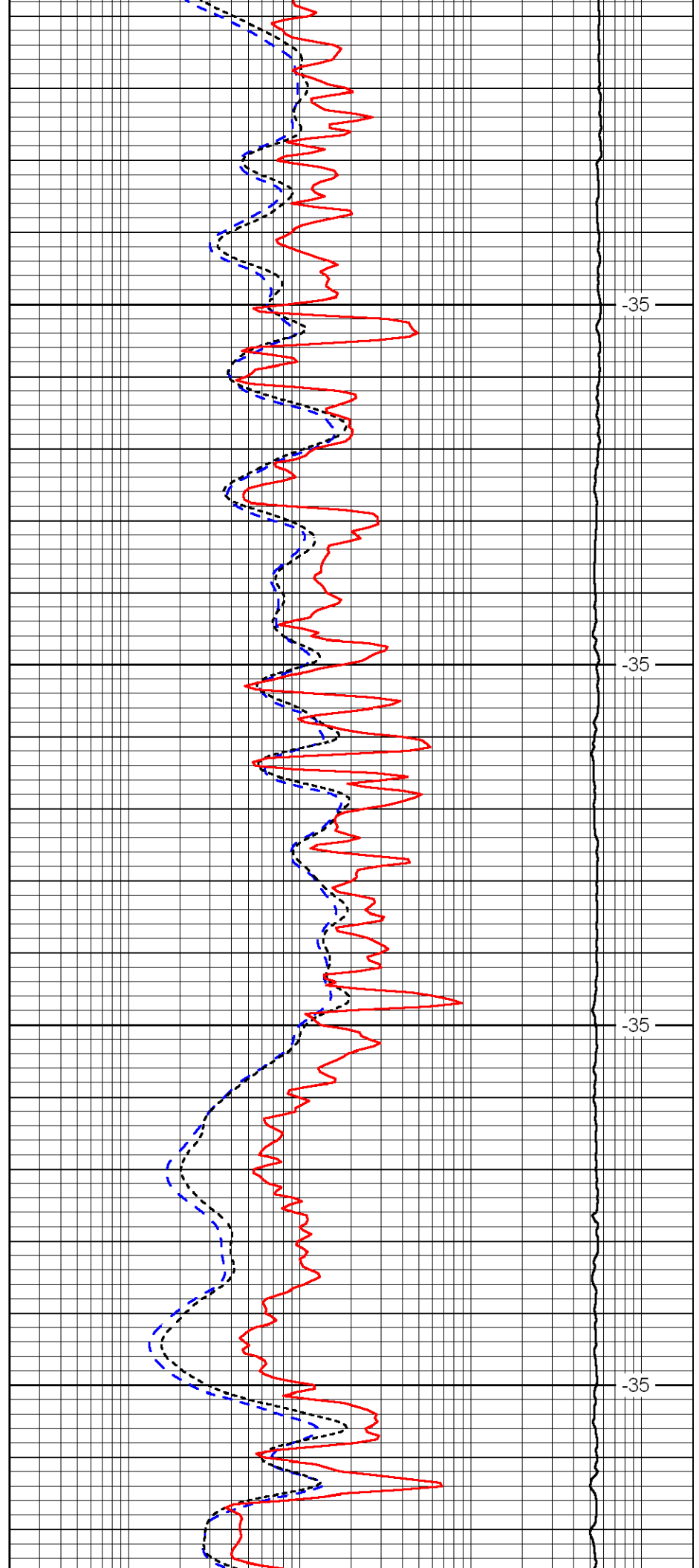


3100

3150

3200

3250

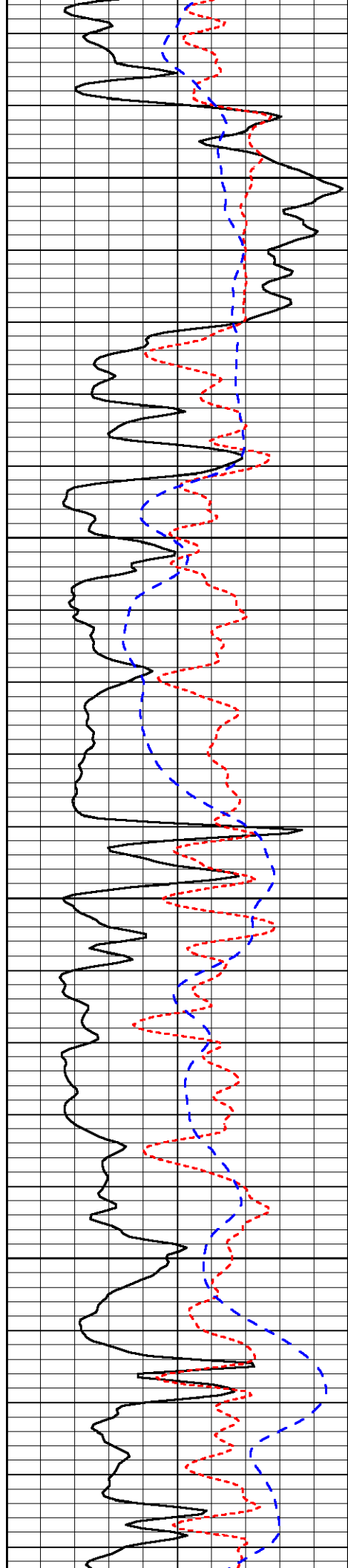


-35

-35

-35

-35

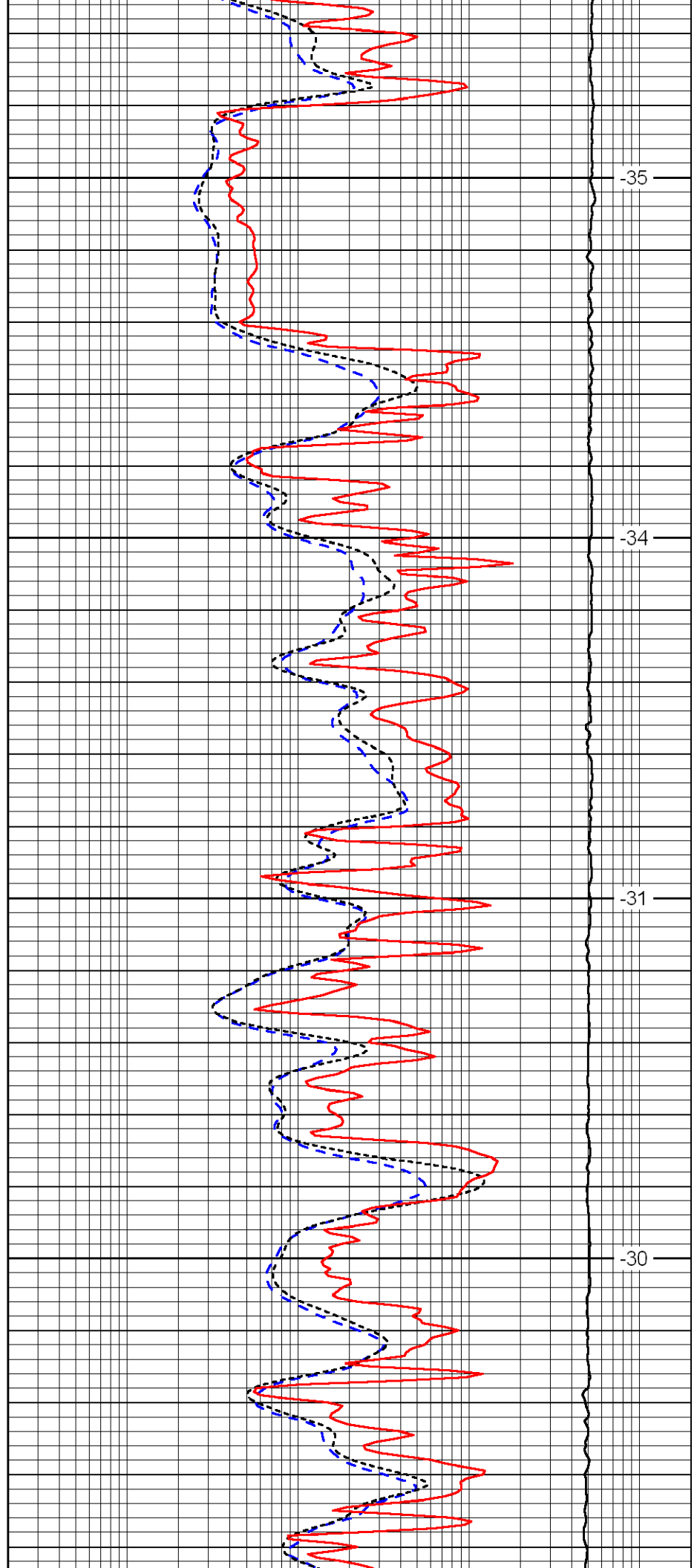


3300

3350

3400

3450

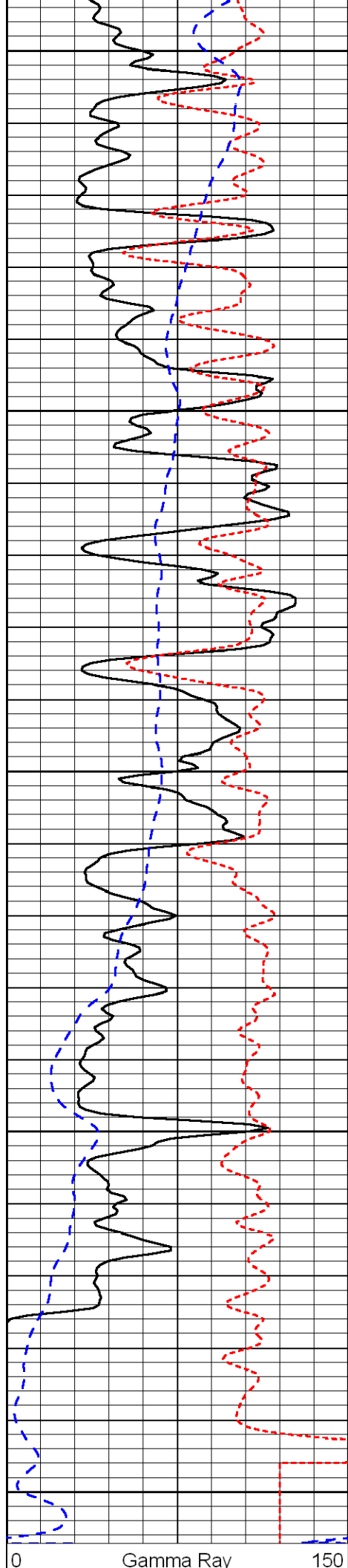


-35

-34

-31

-30



3500

3550

3600

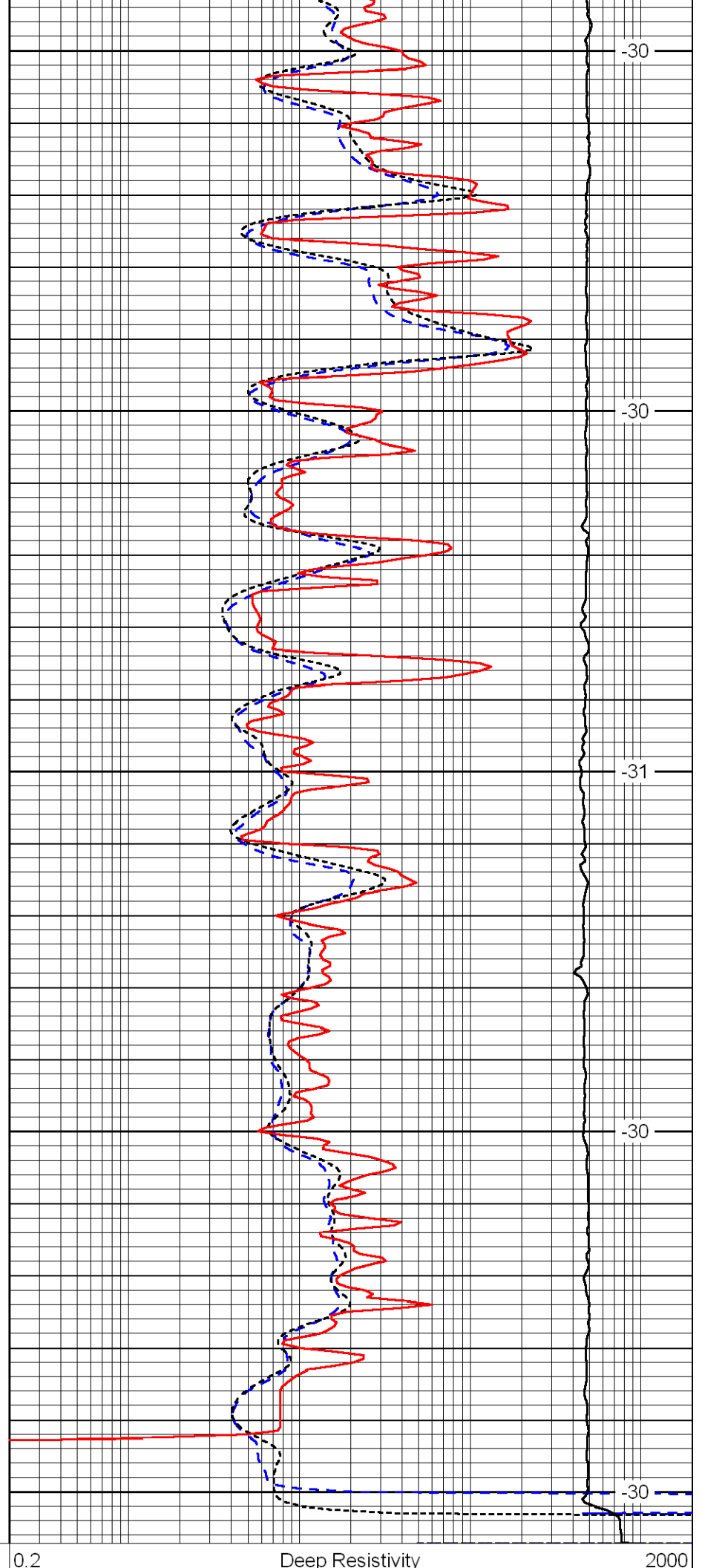
3650

3700

Gamma Ray

0

150



-30

-30

-31

-30

-30

Deep Resistivity

0.2

2000

-160	RXO/RT	40
-200	SP	0

0.2	Medium Resistivity	2000
0.2	Shallow Resistivity	2000
10000	Line Tension	0

LSPD