

Company	Castle Resources Inc.	Location:	2310 PNL & 2310' FEL	APR #:	15 159 22712	State	Kansas	Other Services	DLI CDML
Well	Ross #1	County	Geneseo/Edwards	Parament Datum	KB 5 AGL	Elevation	1766'	K A: 1771'	D F: 1777'
Field	Geneseo/Edwards	State	Kansas	Log Measured From	KB 5 AGL	Elevation	1765'	G L: 1765'	
City	Rice	County	Geneseo/Edwards	Drilling Measured From	Two				
Run Number	11-28-12	Date	11-28-12	Run Number	Two				
Depth Logger	3375	Depth	3375	Depth Logger	3375				
Bottom Logged Interval	3375	Bottom	3375	Bottom Logged Interval	3375				
Casino Driller	8.45/8.322	Casino	324	Casino Driller	8.45/8.322				
Bit Size	7 7/8"	Bit	7 7/8"	Bit Size	7 7/8"				
Type Fluid in Hole	Chemical	Density / Viscosity	8.7/65	Type Fluid in Hole	Chemical				
pH / Fluid Loss	10.0/7.2	pH	10.0/7.2	pH / Fluid Loss	10.0/7.2				
Source of Sample	PH	Source of Sample	PH	Source of Sample	PH				
Run @ Meas. Temp	58/50/50/41	Run @ Meas. Temp	58/50/50/41	Run @ Meas. Temp	58/50/50/41				
Run @ Ref. Temp	58/50/50/41	Run @ Ref. Temp	58/50/50/41	Run @ Ref. Temp	58/50/50/41				
Run @ BHT	29/31/29/41	Run @ BHT	29/31/29/41	Run @ BHT	29/31/29/41				
Time Circulation Stopped	8:30 a.m.	Time Circulation Stopped	8:30 a.m.	Time Circulation Stopped	8:30 a.m.				
Time Logged on Station	1:20/41	Time Logged on Station	1:20/41	Time Logged on Station	1:20/41				
Maximum Recorded Temperature	112/41	Maximum Recorded Temperature	112/41	Maximum Recorded Temperature	112/41				
Equipment Number	Hays KS	Equipment Number	Hays KS	Equipment Number	Hays KS				
Location	Gus Parentfield	Location	Gus Parentfield	Location	Gus Parentfield				
Recorded By	Mr. Arin Green	Recorded By	Mr. Arin Green	Recorded By	Mr. Arin Green				

<<< Fold Here >>>

All interpretations are opinions based on inferences from electrical or other measurements and we cannot and do not guarantee the accuracy or correctness of any interpretation, and we shall not, except in the case of gross or willful negligence on our part, be liable or responsible for any loss, costs, damages, or expenses incurred or sustained by anyone resulting from any interpretation made by any of our officers, agents or employees. These interpretations are also subject to our general terms and conditions set out in our current Price Schedule.

Comments

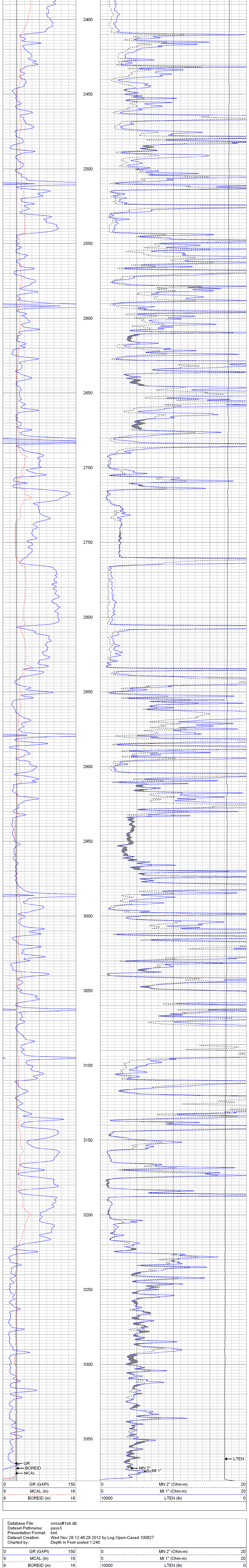
Thanks for using The Perforators LLC Hays, KS. (785-621-4604)

The Perforators LLC

Main Pass

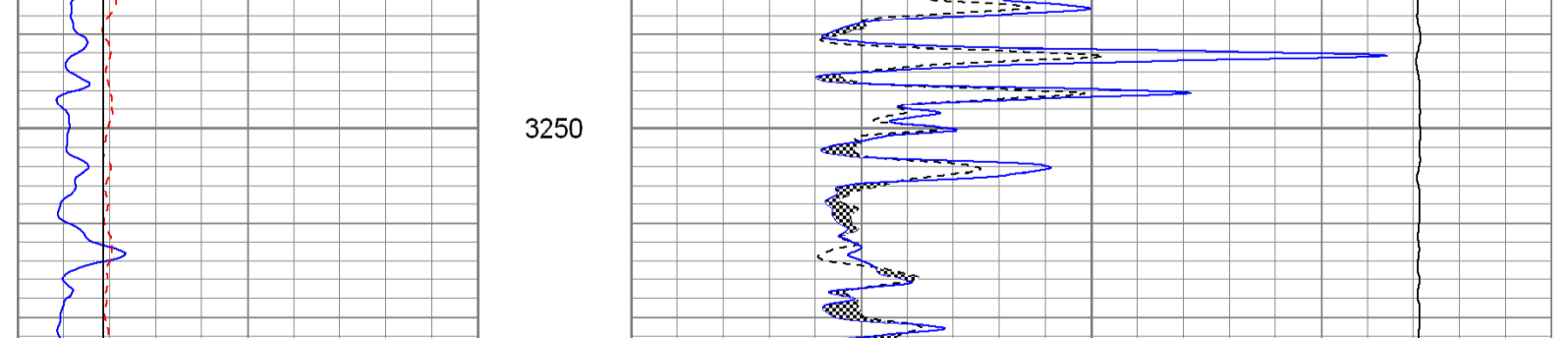
Database File: cross#1oh.db
 Dataset Pathname: pass4
 Presentation Format: kml
 Dataset Creation: Wed Nov 28 12:59:13 2012 by Log Open-Cased 100827
 Charted by: Depth in Feet scaled 1:240

0	GR (GAPI)	150	0	MN 2" (Ohm-m)	20
6	MCAL (in)	16	0	MI 1" (Ohm-m)	20
6	BOREID (in)	16	10000	LTEN (lb)	0



0	GR (GAPI)	150	0	MN 2" (Ohm-m)	20
6	MCAL (in)	16	0	MI 1" (Ohm-m)	20
6	BOREID (in)	16	10000	LTEN (lb)	0

Database File: cross#1oh.db
 Dataset Pathname: pass3
 Presentation Format: kml
 Dataset Creation: Wed Nov 28 12:48:28 2012 by Log Open-Cased 100827
 Charted by: Depth in Feet scaled 1:240



Gamma Ray Calibration Report

Serial Number: 2001
 Tool Model: OH
 Performed: Thu Nov 22 09:34:58 2012

Background Value: 1.0 GAPI
 Calibrator Reading: 1.0 cps
 Sensitivity: 0.2300 GAPI/cps

Sensor	Offset (ft)	Schematic	Description	Len (ft)	OD (in)	Wt (lb)
GR	8.13		GR-OH (2001) 2001	3.56	3.25	40.00
MN MI MCAL	1.30 1.30 1.30		ML-Pengo (012)	6.96	3.50	100.00

Dataset: cross#1oh.db: field/well/run/pass3
 Total Length: 10.53 ft
 Total Weight: 140.00 lb
 O.D.: 3.50 in