



MIDWEST SURVEYS
 LOGGING - PERFORATING - CONSULTING SERVICES
 P.O. Box 66, Osawatomie, KS 68064
 913 / 755 - 2128

GAMMA RAY / NEUTRON / CCL

File No. _____

Company **EnerJex Kansas, Inc.**

Well **Alexander No. BSP-AL-11**

Field **Paola / Rantoul**

County **Franklin** State **Kansas**

Location **2002 FSL & 2854' FEL**

Other Services **Perforate**

Sec. **29** Twp. **18S** Rge. **21E**

Perforant Datum **GL** Elevation **NA**

Log Measured From **GL**

Drilling Measured From **GL**

Date **09-13-2012**

Run Number **One**

Depth Driller **800.0**

Depth Logger **754.0**

Bottom Logged Interval **753.0**

Top Log Interval **20.0**

Fluid Level **Full**

Type Fluid **Water**

Density / Viscosity **NA**

Salinity - PPM/Cl **NA**

Max Recorded Temp **NA**

Estimated Cement Top **NA**

Equipment No. **104** Location **Osawatomie**

Recorded By **Gary Wandsch**

Witnessed By **Jay Schendel**

BORE-HOLE RECORD				CASING RECORD			
RUN No.	BIT FROM	TO	SIZE	WGT.	FROM	TO	
One	9.875"	20.0	7.00"	0.0	20.0	20.0	
Two	5.625"	20.0	2.875"	0.0	760.0	760.0	

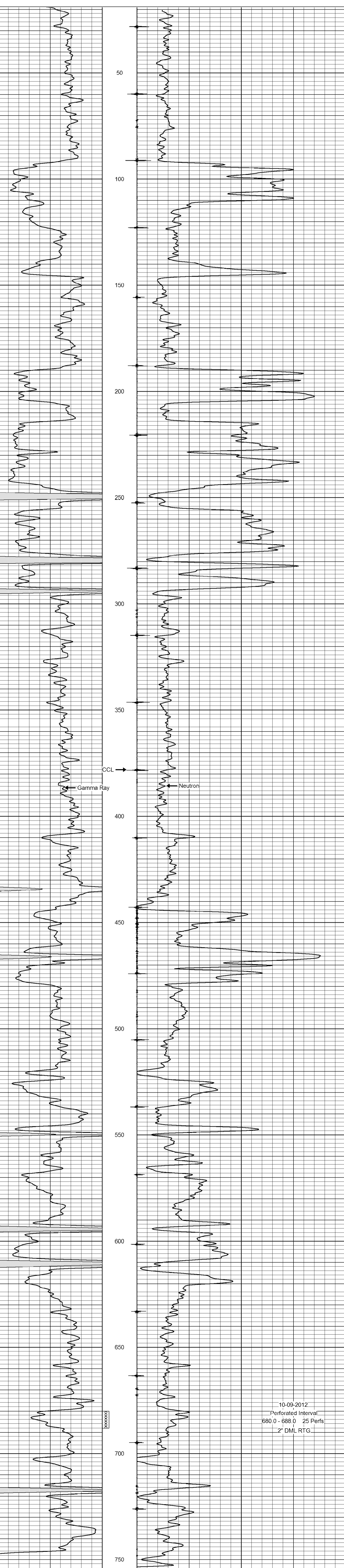
<<< Fold Here >>>

All interpretations are opinions based on inferences from electrical or other measurements and we cannot and do not guarantee the accuracy or correctness of any interpretation, and we shall not, except in the case of gross or willful negligence on our part, be liable or responsible for any loss, costs, damages, or expenses incurred or sustained by anyone resulting from any interpretation made by any of our officers, agents or employees. These interpretations are also subject to our general terms and conditions set out in our current Price Schedule.

Comments

Drilling Contractor :
JTC Oil, Inc.

Database File: alexndr11pa.db
 Dataset Pathname: pass1
 Presentation Format: gr-n-ccl
 Dataset Creation: Thu Sep 13 13:10:57 2012 by Log SCH 111116
 Charted by: Depth in Feet scaled 1:240



10-09-2012
 Perforated Interval
 680.0 - 688.0 25 Perfs
 2" DML RTG