

Company	Castle Resources, Inc.	Well	Ross#1
Field	Genesee/Edwards	County	Rice
State	KS	Location:	2310 FW & 2310 FEL
APL #:	15 159 22712	Other Services	
Company	Genesee/Edwards	Well	Ross#1
Field	Genesee/Edwards	County	Rice
State	KS	Location:	2310 FW & 2310 FEL
APL #:	15 159 22712	Other Services	
Company	Genesee/Edwards	Well	Ross#1
Field	Genesee/Edwards	County	Rice
State	KS	Location:	2310 FW & 2310 FEL
APL #:	15 159 22712	Other Services	
Company	Genesee/Edwards	Well	Ross#1
Field	Genesee/Edwards	County	Rice
State	KS	Location:	2310 FW & 2310 FEL
APL #:	15 159 22712	Other Services	

All interpretations are inferences based on inferences from electrical or other measurements and we cannot and do not guarantee the accuracy or correctness of any interpretation, and we shall not, except in the case of gross or willful negligence on our part, be liable or responsible for any loss, costs, damages, or expenses incurred or sustained by anyone resulting from any interpretation made by any of our officers, agents or employees. These interpretations are also subject to our general terms and conditions set out in our current Price Schedule.

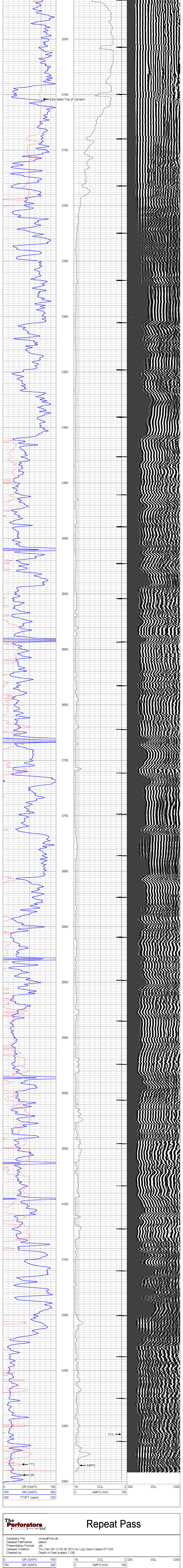
Comments

<<< Fold Here >>>

The Perforators LLC Main Pass

Database File: cross#1cbl.db
 Dataset Pathname: pass4
 Presentation Format: cbl
 Dataset Creation: Thu Dec 06 12:34:20 2012 by Log Open-Cased 071220
 Charted by: Depth in Feet scaled 1.240

0	GR (GAPI)	150	18	CCL	-2	200	VDL	1200
150	GR (GAPI)	300	0	AMP3 (mV)	100			
420	TT3FT (usec)	220						

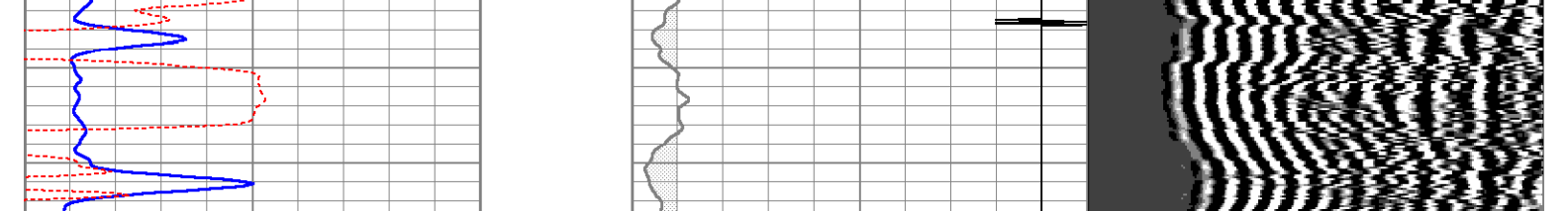


0	GR (GAPI)	150	18	CCL	-2	200	VDL	1200
150	GR (GAPI)	300	0	AMP3 (mV)	100			
420	TT3FT (usec)	220						

The Perforators LLC Repeat Pass

Database File: cross#1cbl.db
 Dataset Pathname: pass3
 Presentation Format: cbl
 Dataset Creation: Thu Dec 06 12:28:26 2012 by Log Open-Cased 071220
 Charted by: Depth in Feet scaled 1.240

0	GR (GAPI)	150	18	CCL	-2	200	VDL	1200
150	GR (GAPI)	300	0	AMP3 (mV)	100			
420	TT3FT (usec)	220						



0	GR (GAPI)	150	18	CCL	-2	200	VDL	1200
150	GR (GAPI)	300	0	AMP3 (mV)	100			
420	TT3FT (usec)	220						

Calibration Report

Database File: cross#1cbl.db
 Dataset Pathname: pass3
 Dataset Creation: Thu Dec 06 12:28:26 2012 by Log Open-Cased 071220

Gamma Ray Calibration Report

Serial Number: 080224
 Tool Model: Probe1
 Performed: Thu Sep 27 07:34:48 2012
 Calibrator Value: 200.0 GAPI
 Background Reading: 15.0 cps
 Calibrator Reading: 222.7 cps
 Sensitivity: 0.9629 GAPI/cps

Cement Bond Log Calibration Report

Serial Number: 061007
 Tool Model: DigitalCBL
 Performed: Wed Oct 03 14:06:47 2012
 Depth: 328.171 ft
 Casing Diameter: 5.5 in
 3' Spacing: 5' Spacing
 Signal Zero: 2 mV
 Calibrated Amplitude: 71.921 mV
 Reading at Signal Zero: -0.00253906 V
 Reading in Free Pipe: 1.44897 1.39895 V
 Gain: 48.1711 51.3202
 Offset: 2.12231 0.126546

Sensor	Offset (ft)	Schematic	Description	Len (ft)	OD (in)	Wt (lb)
--------	-------------	-----------	-------------	----------	---------	---------

			275 2 3/4" Centralizer	2.94	2.75	10.00
WVF3	11.69	[Schematic]	Probedig-DigitalCBL (061007)	8.77	2.75	92.00
WVF5	10.69		275 2 3/4" Centralizer	2.94	2.75	10.00
CCL	3.67		CCL-Probe (080224)	1.42	2.75	20.00
GR	2.30		GR-Probe1 (080224)	3.08	2.75	40.00

Dataset: cross#1cbl.db: field/well/run1/pass4
 Total Length: 19.14 ft
 Total Weight: 172.00 lb
 O.D.: 2.75 in