



**COMPLETION  
& PRODUCTION  
SERVICES CO.**

**SONIC  
LOG**

Company RICHILAN DRILLING  
Well SCHNEWEIS #10  
Field  
County BARTON State KANSAS

Company RICHILAN DRILLING  
Well SCHNEWEIS #10  
Field  
County BARTON  
State KANSAS

Location: API #: 15-009-25820  
330' FSL & 2310' FWL  
SEC 5 TWP 17S RGE 11W  
Permanent Datum GROUND LEVEL Elevation 1899  
Log Measured From KELLY BUSHING 7' A.G.L.  
Drilling Measured From KELLY BUSHING  
Other Services  
CDL/CNL  
DIL  
Elevation  
K.B. 1906  
D.F.  
G.L. 1899

Date	3-18-13
Run Number	TW0
Depth Driller	3554
Depth Logger	3552
Bottom Logged Interval	3545
Top Log Interval	450
Casing Driller	472
Casing Logger	472
Bit Size	7.875
Type Fluid in Hole	CHEMICAL MUD
Density / Viscosity	9.2 / 46
pH / Fluid Loss	10.5 / 7.6
Source of Sample	FLOWLINE
Rim @ Meas. Temp	0.65 @ 70F
Rmf @ Meas. Temp	0.49 @ 70F
Rmc @ Meas. Temp	0.78 @ 70F
Source of Rmf / Rmc	MEASURED
Rim @ BHT	.420 @ 109F
Time Circulation Stopped	12:00 P.M.
Time Logger on Bottom	12:45 P.M.
Maximum Recorded Temperature	109F
Equipment Number	860
Location	HAYS, KS.
Recorded By	RUPP
Witnessed By	BOB SCHREIBER

<<< Fold Here >>>

All interpretations are opinions based on inferences from electrical or other measurements and we cannot and do not guarantee the accuracy or correctness of any interpretation, and we shall not, except in the case of gross or willful negligence on our part, be liable or responsible for any loss, costs, damages, or expenses incurred or sustained by anyone resulting from any interpretation made by any of our officers, agents or employees. These interpretations are also subject to our general terms and conditions set out in our current Price Schedule.

Comments

NABORS COMPLETION & PRODUCTION SERVICES  
785-628-6395  
THANK YOU FOR YOUR BUSINESS  
DIRECTIONS: HITCHMAN, 1/2E, 1S, 1/2E, N INTO.  
COMMENT: HIT A BRIDGE AT 3358, COULD NOT REACH TD AND LOGGED UP FROM THERE.

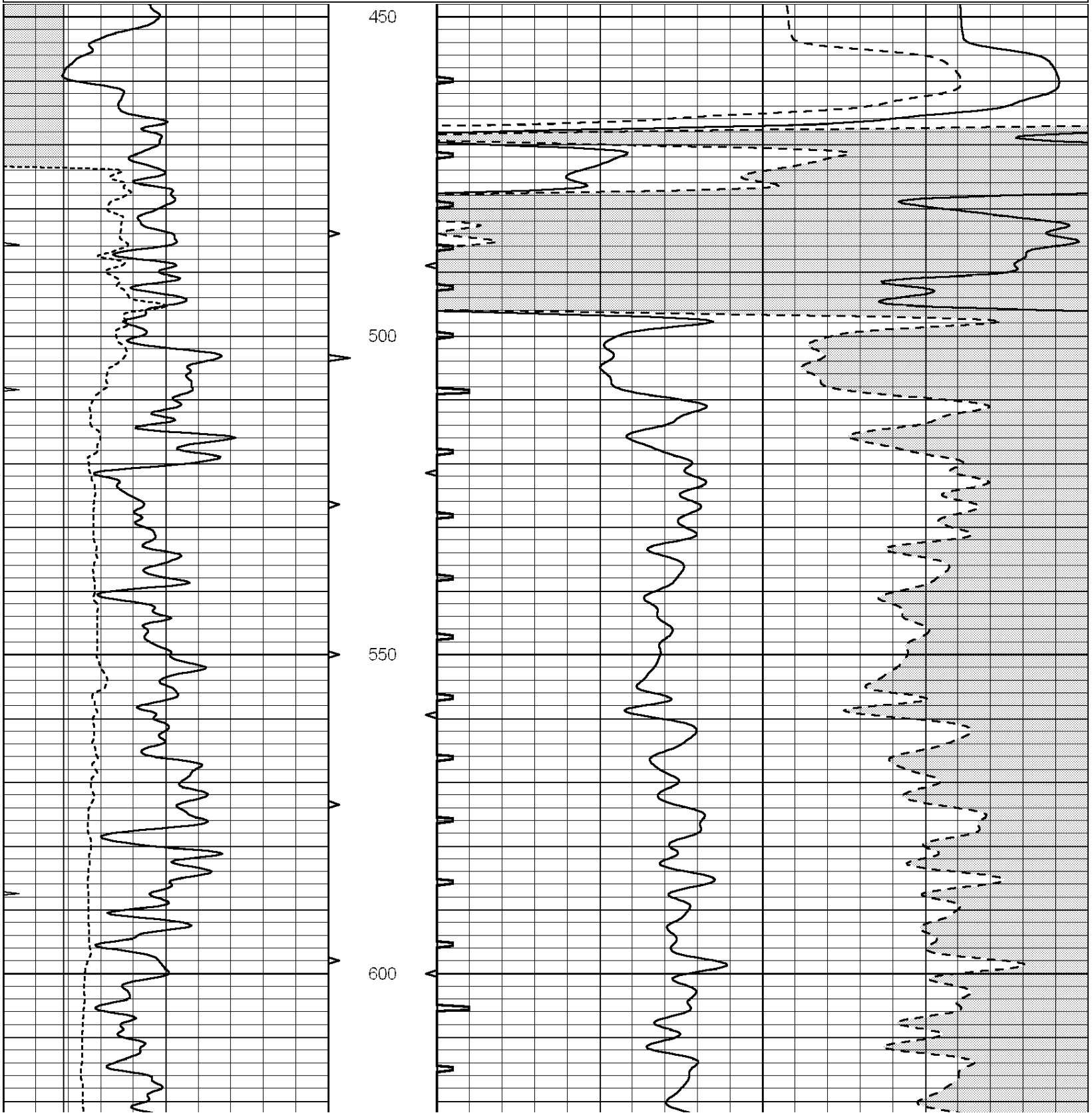


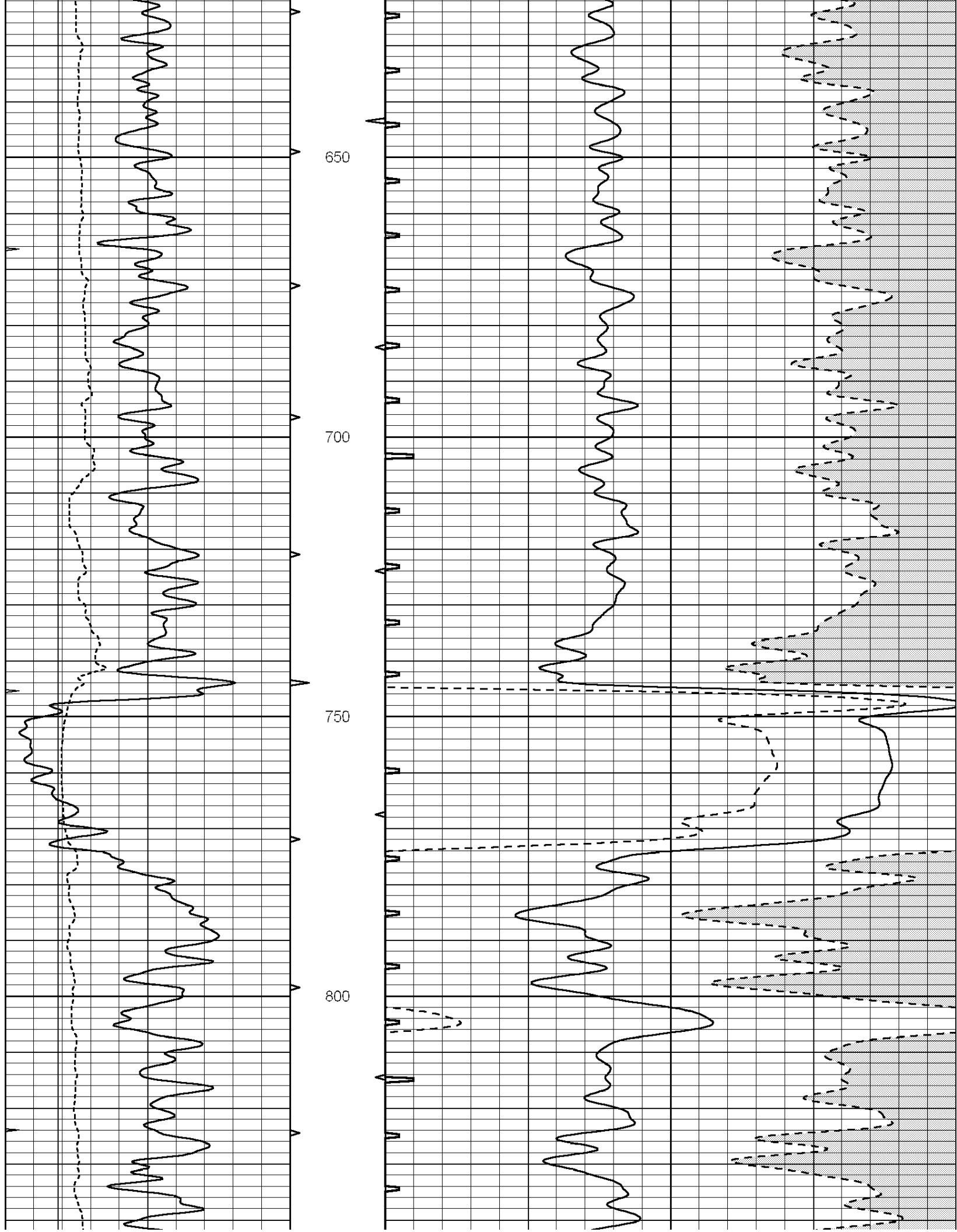
**COMPLETION  
& PRODUCTION**

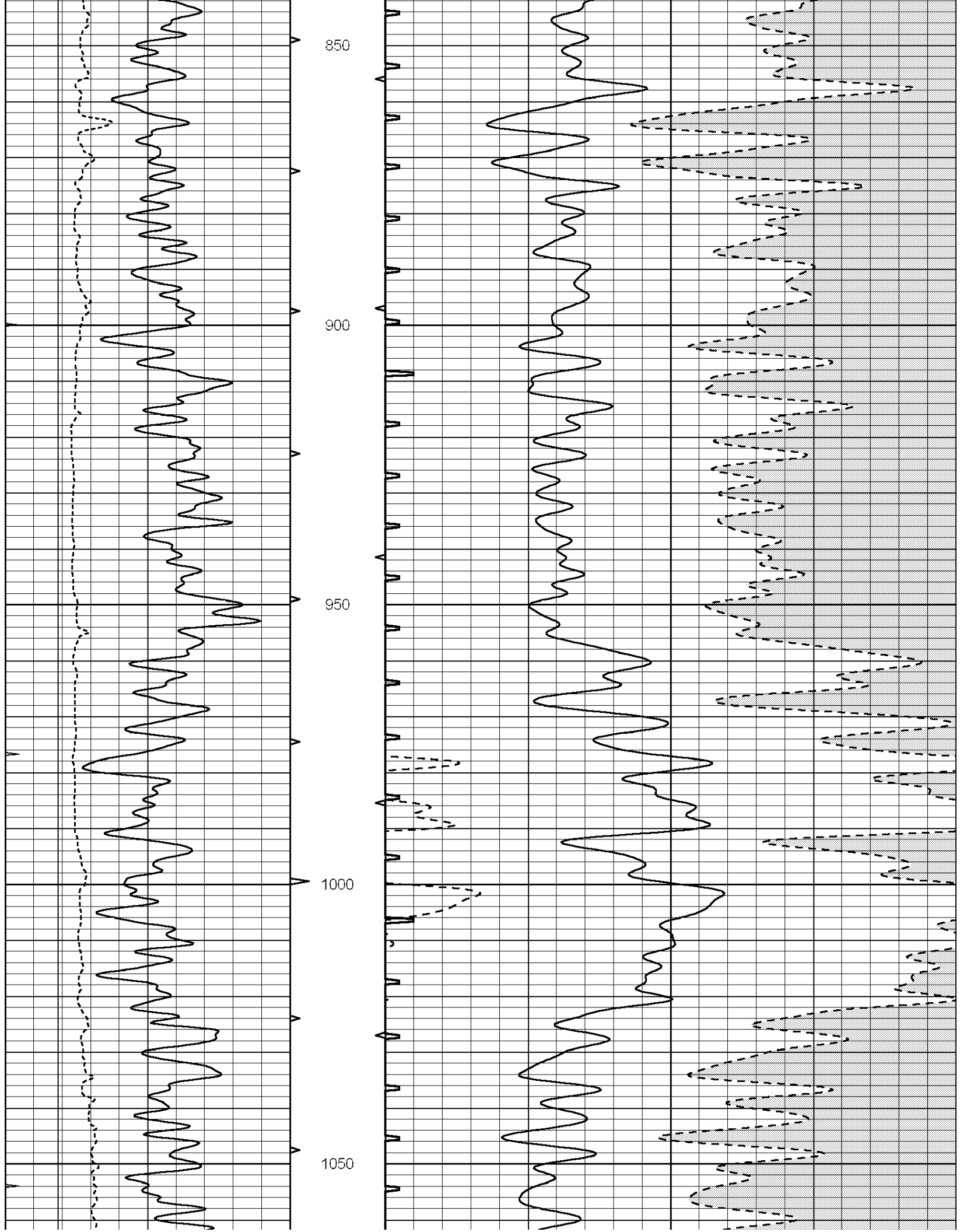
**MAIN SECTION**

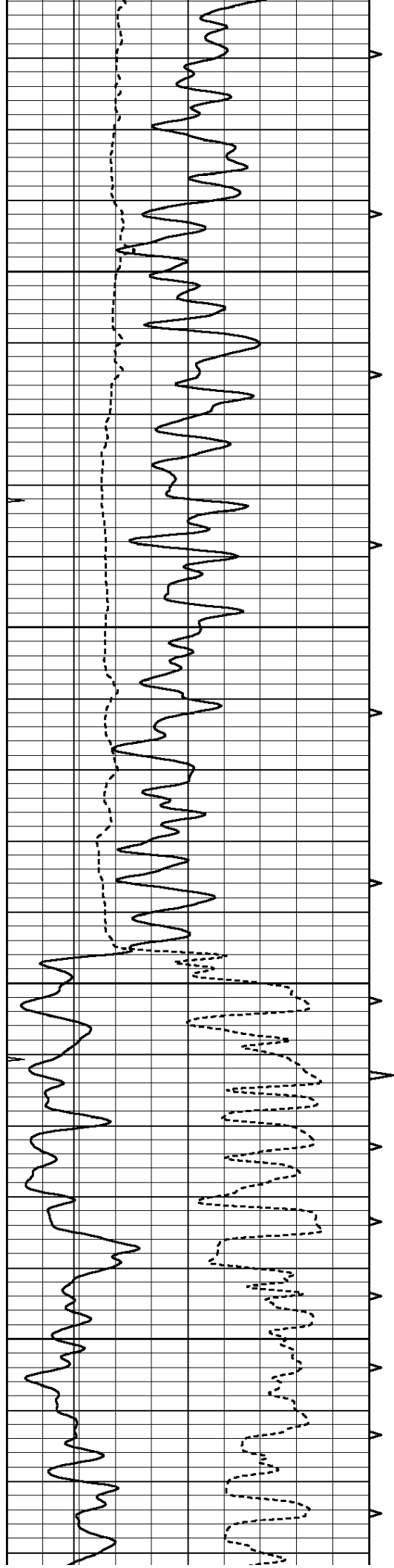
Database File: 010838ddn.db  
 Dataset Pathname: pass6.1A  
 Presentation Format: slt  
 Dataset Creation: Tue Mar 19 12:41:38 2013  
 Charted by: Depth in Feet scaled 1:240

0	GAMMA RAY (GAPI)	150	ABHV	140	DELTA TIME (usec/ft)	40
6	MELCAL (in)	16	10 (ft3) 0	30	SONIC POROSITY (pu)	-10
0	MINMK	20	TBHV	0	ITT (msec)	20
			0 (ft3) 10			

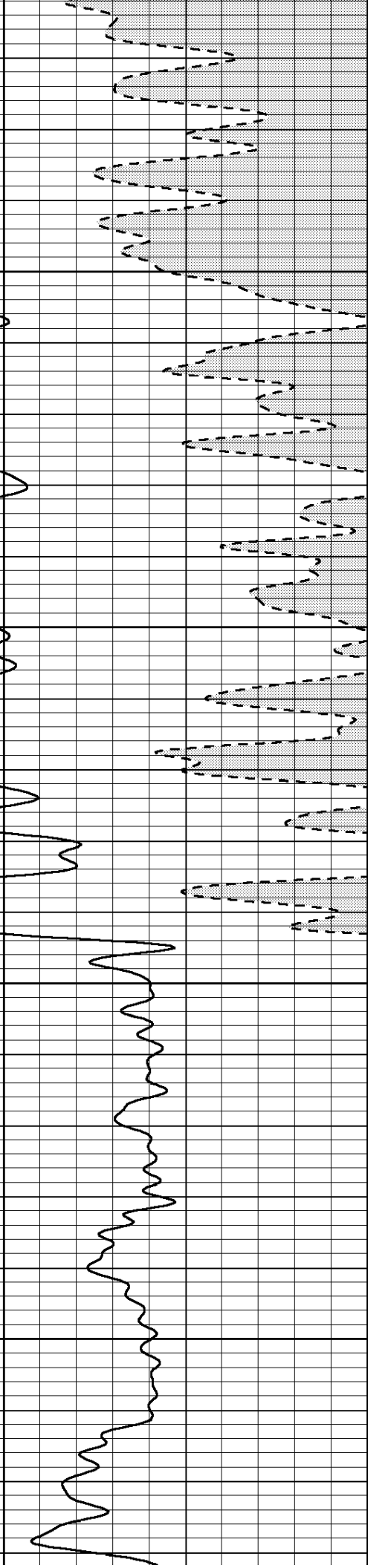
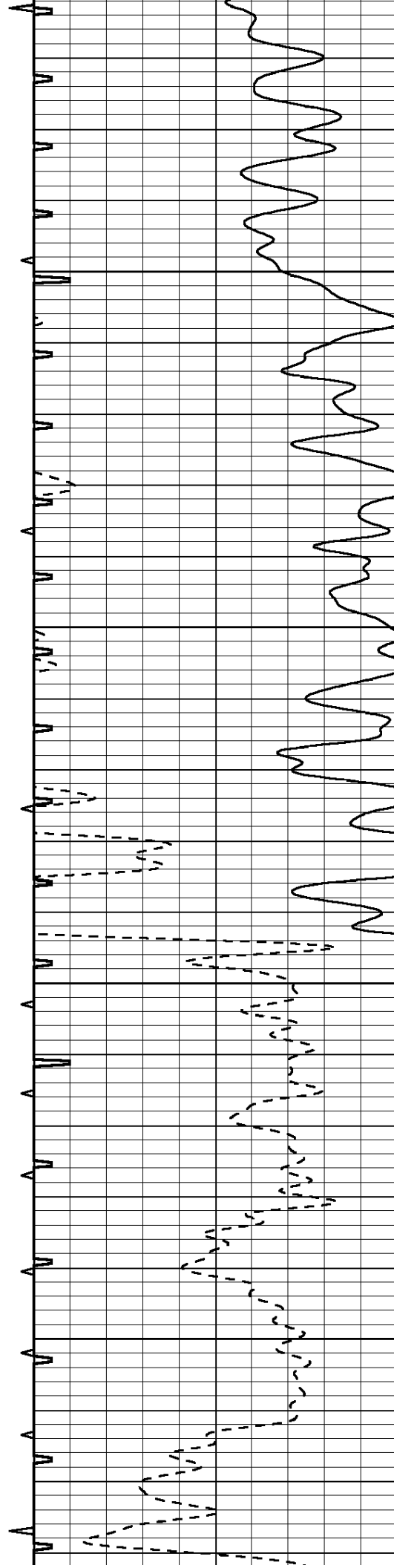


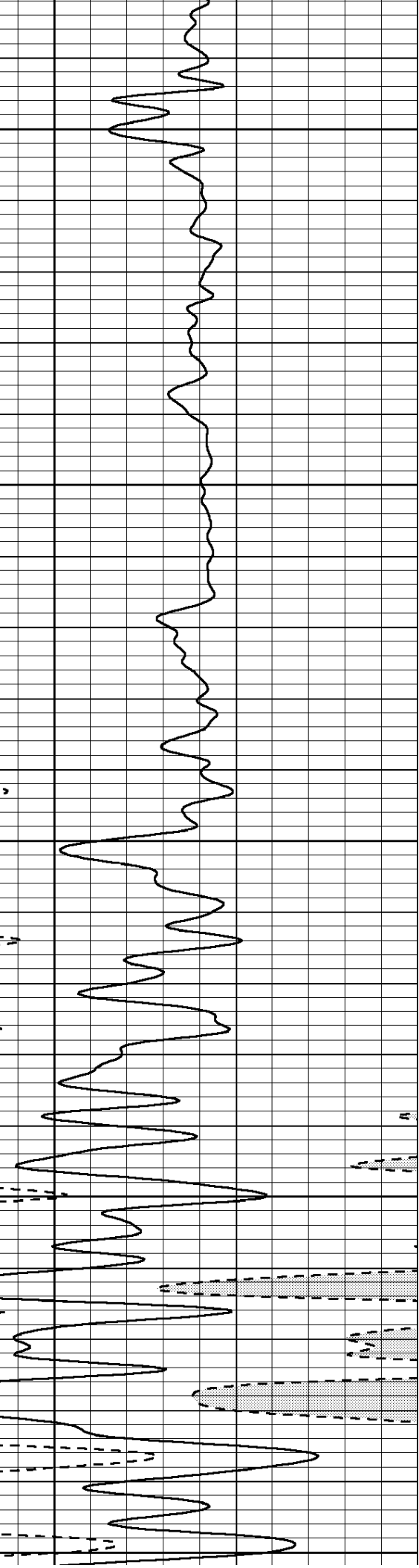
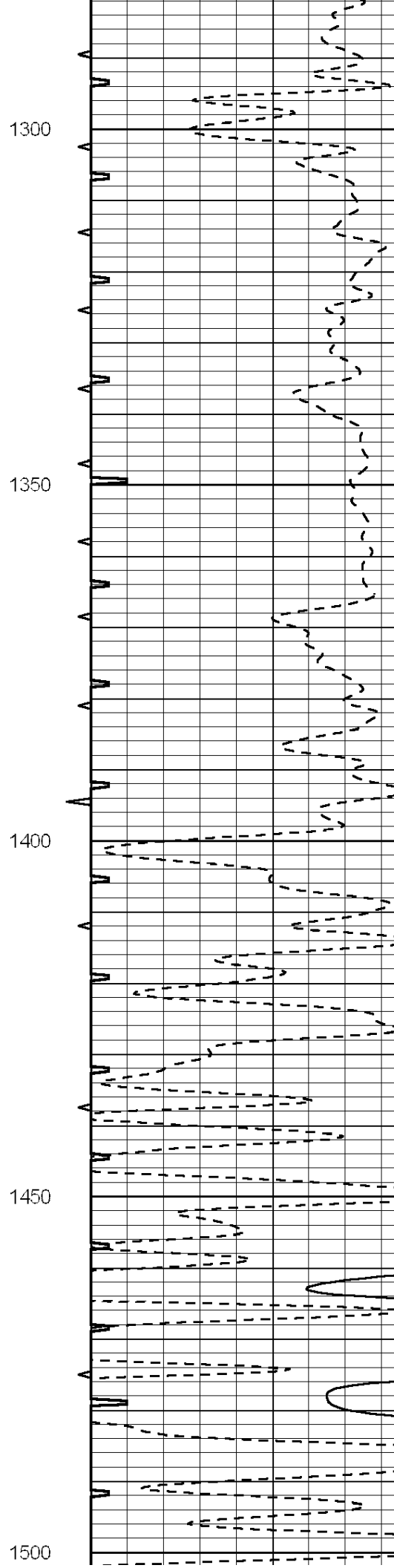
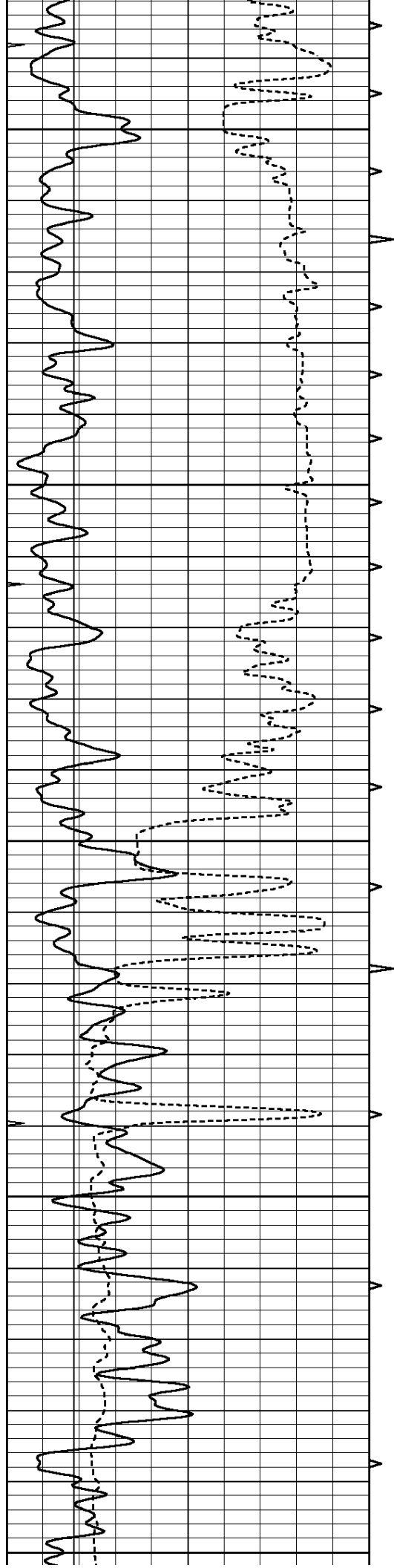


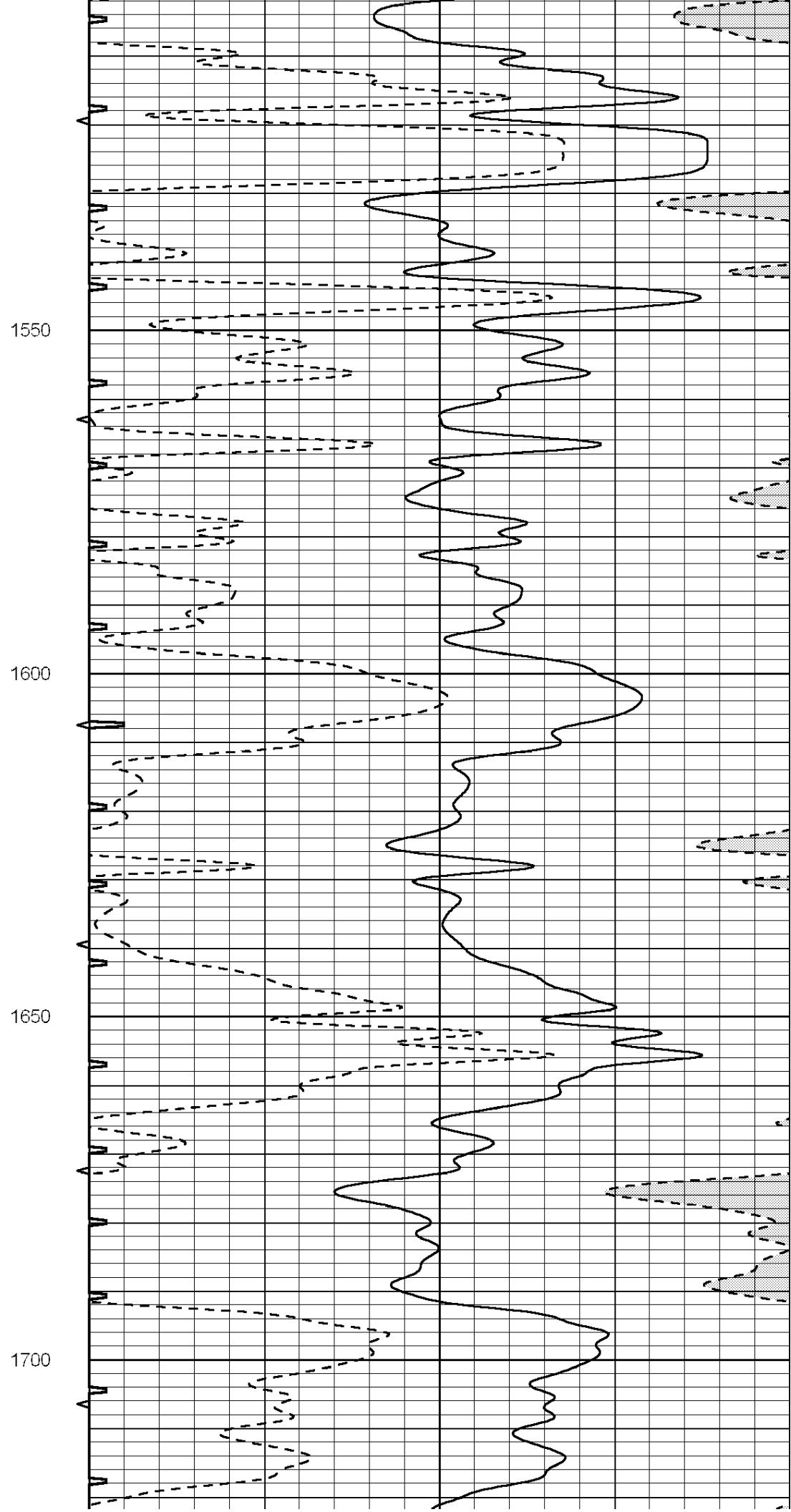
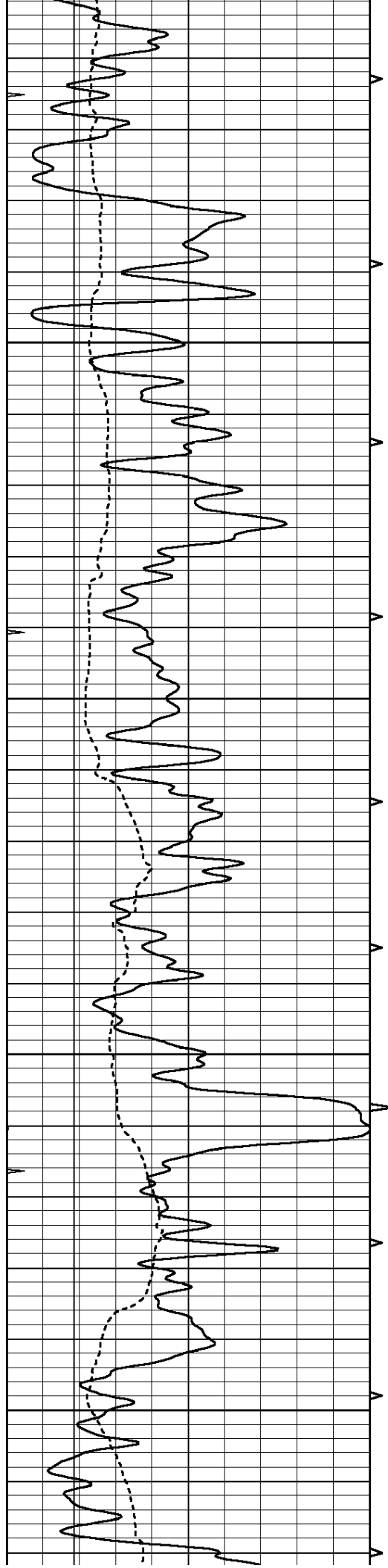


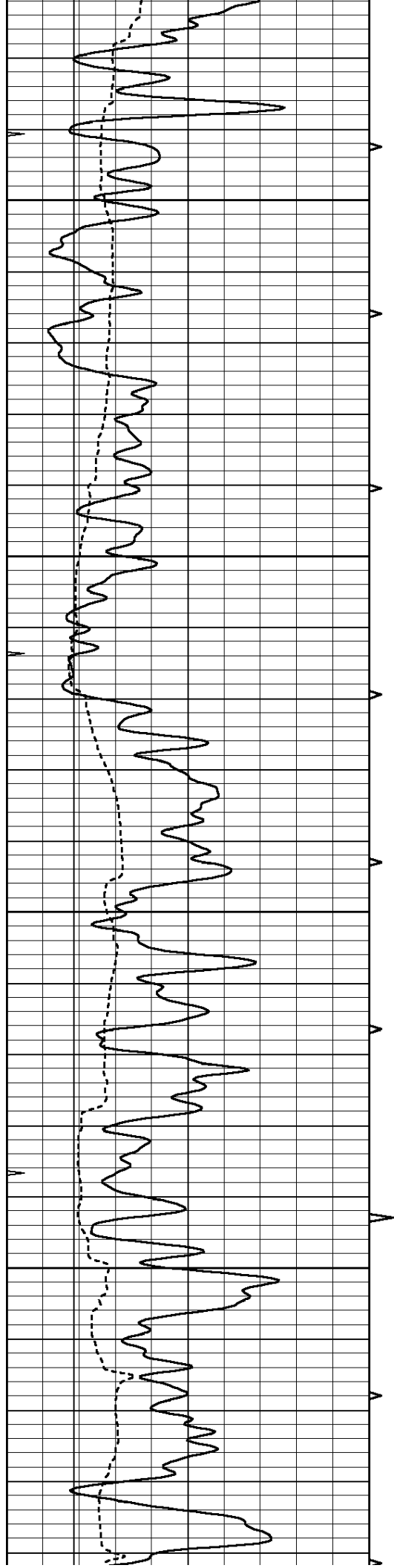


1100  
1150  
1200  
1250







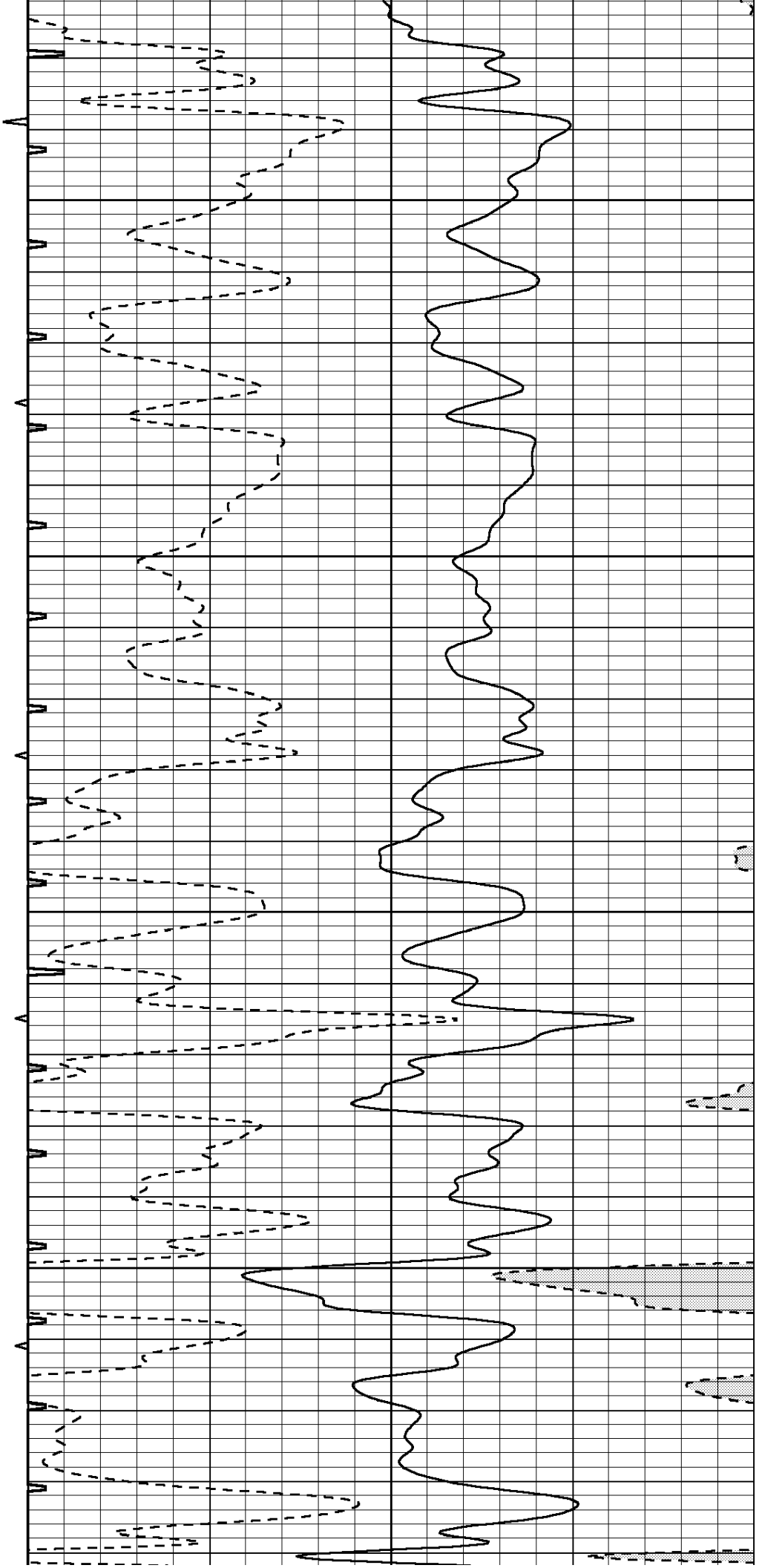


1750

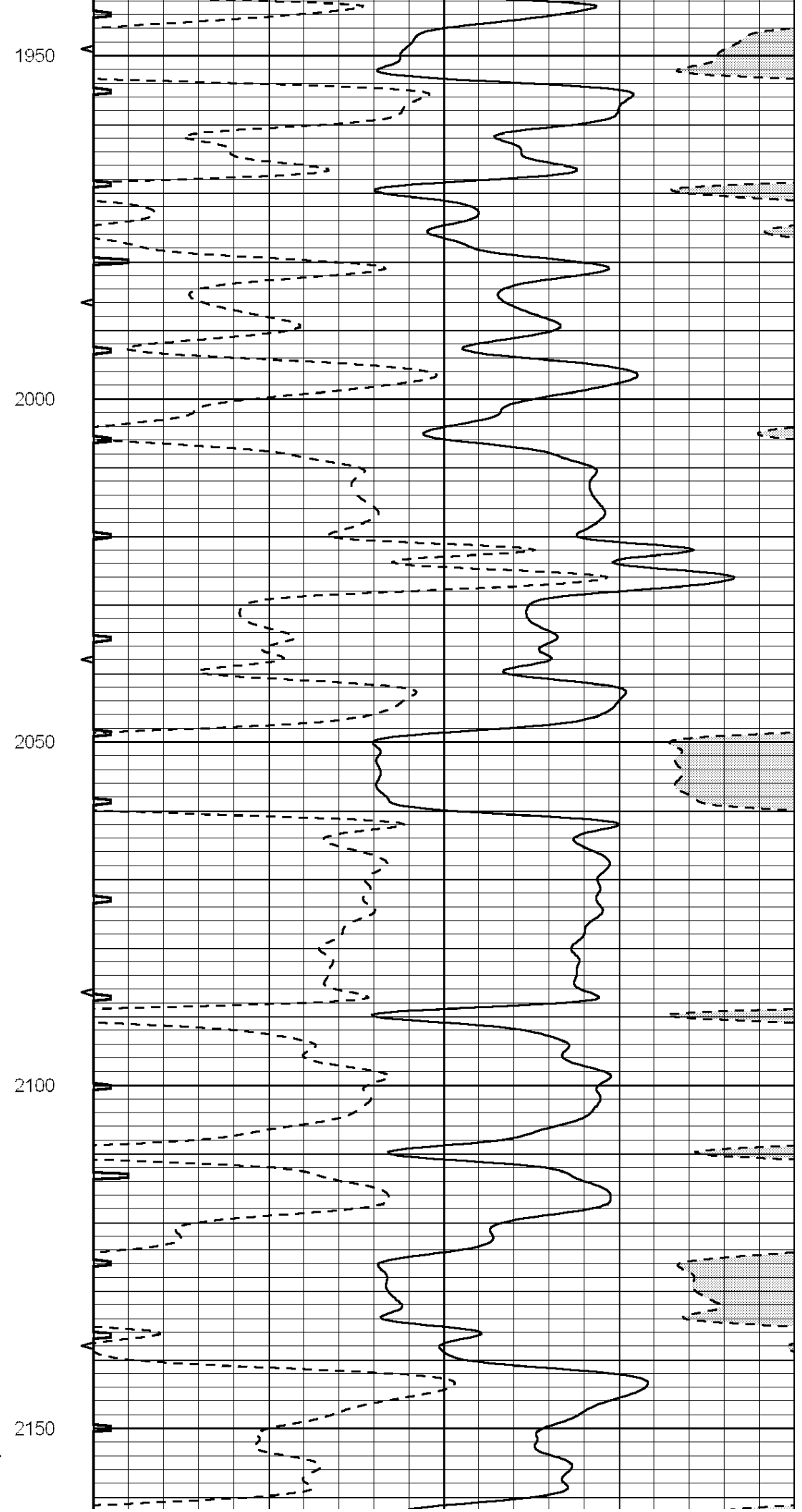
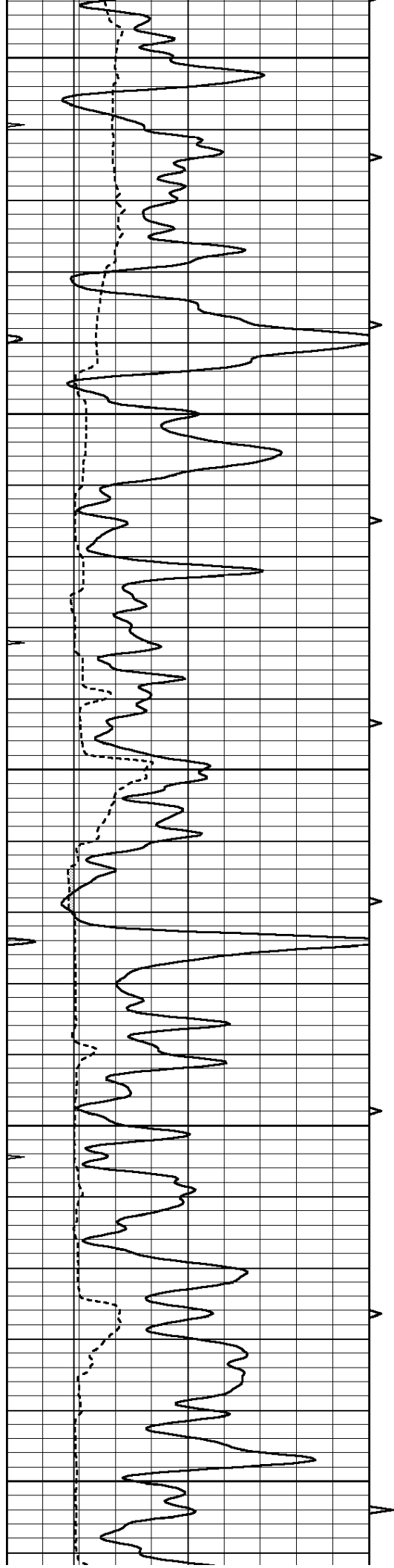
1800

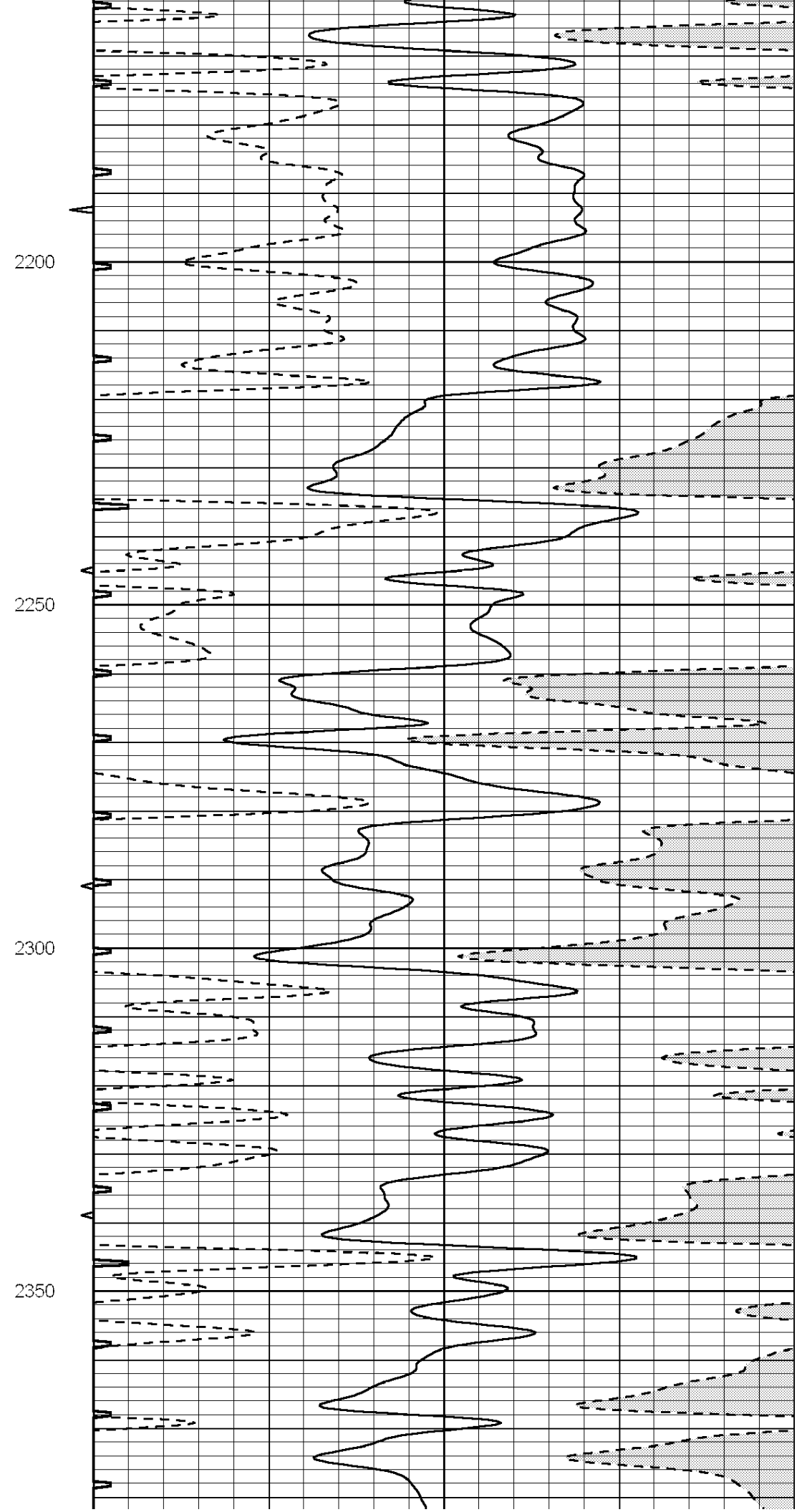
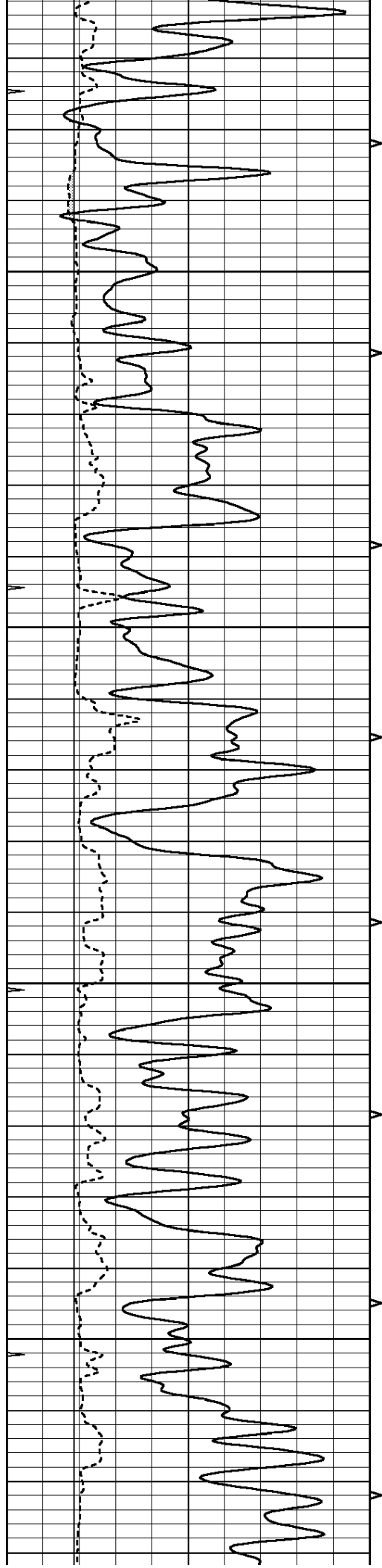
1850

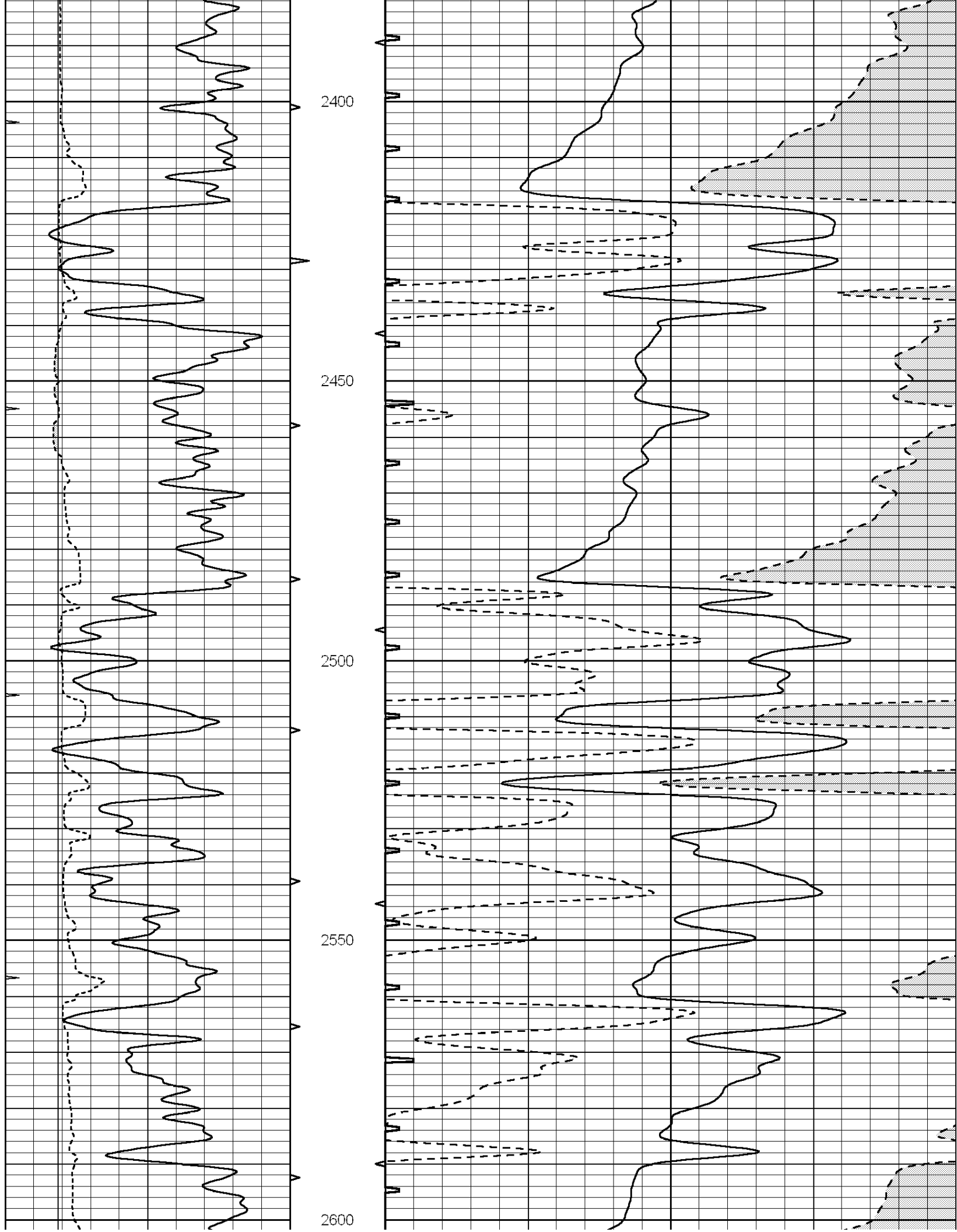
1900

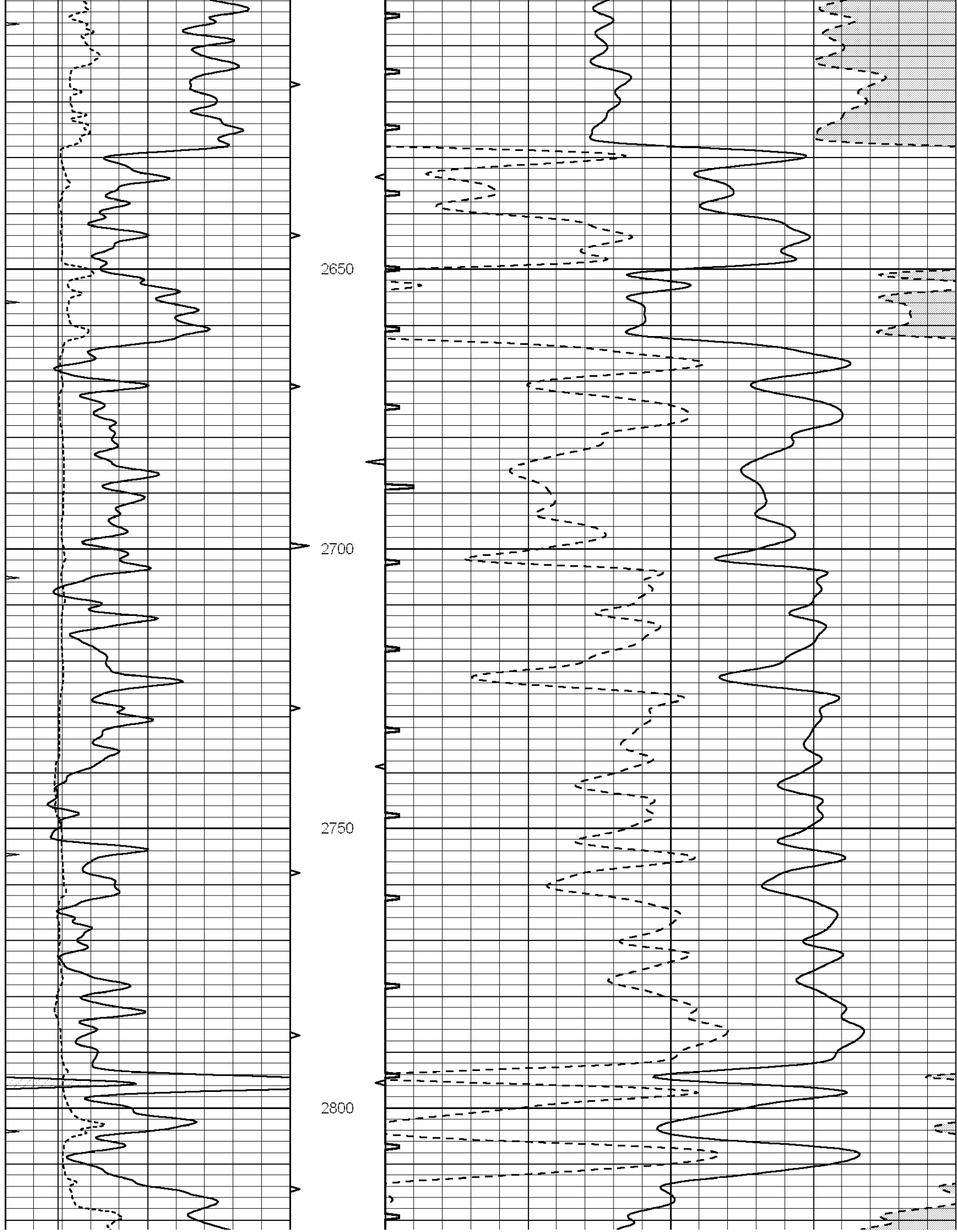


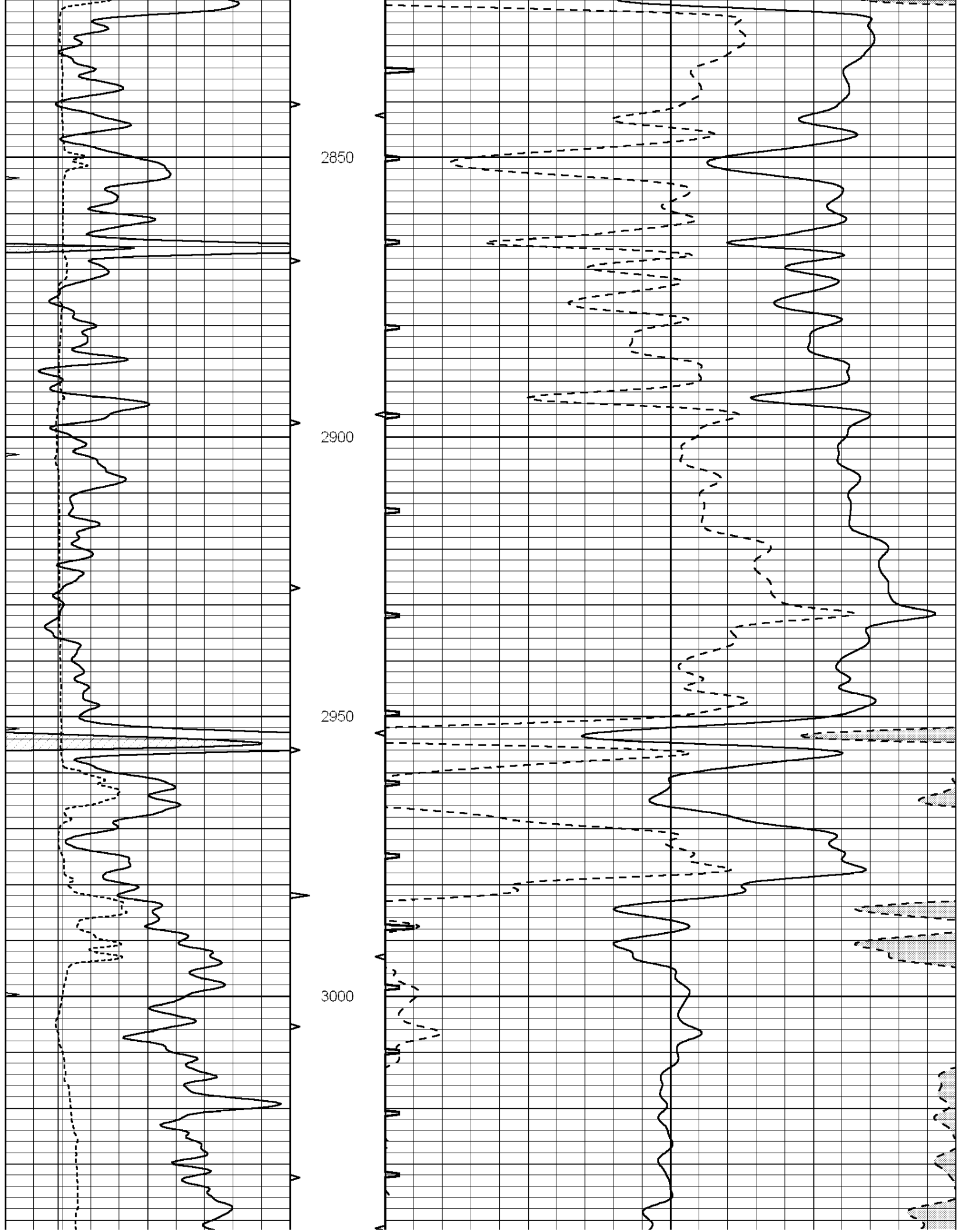


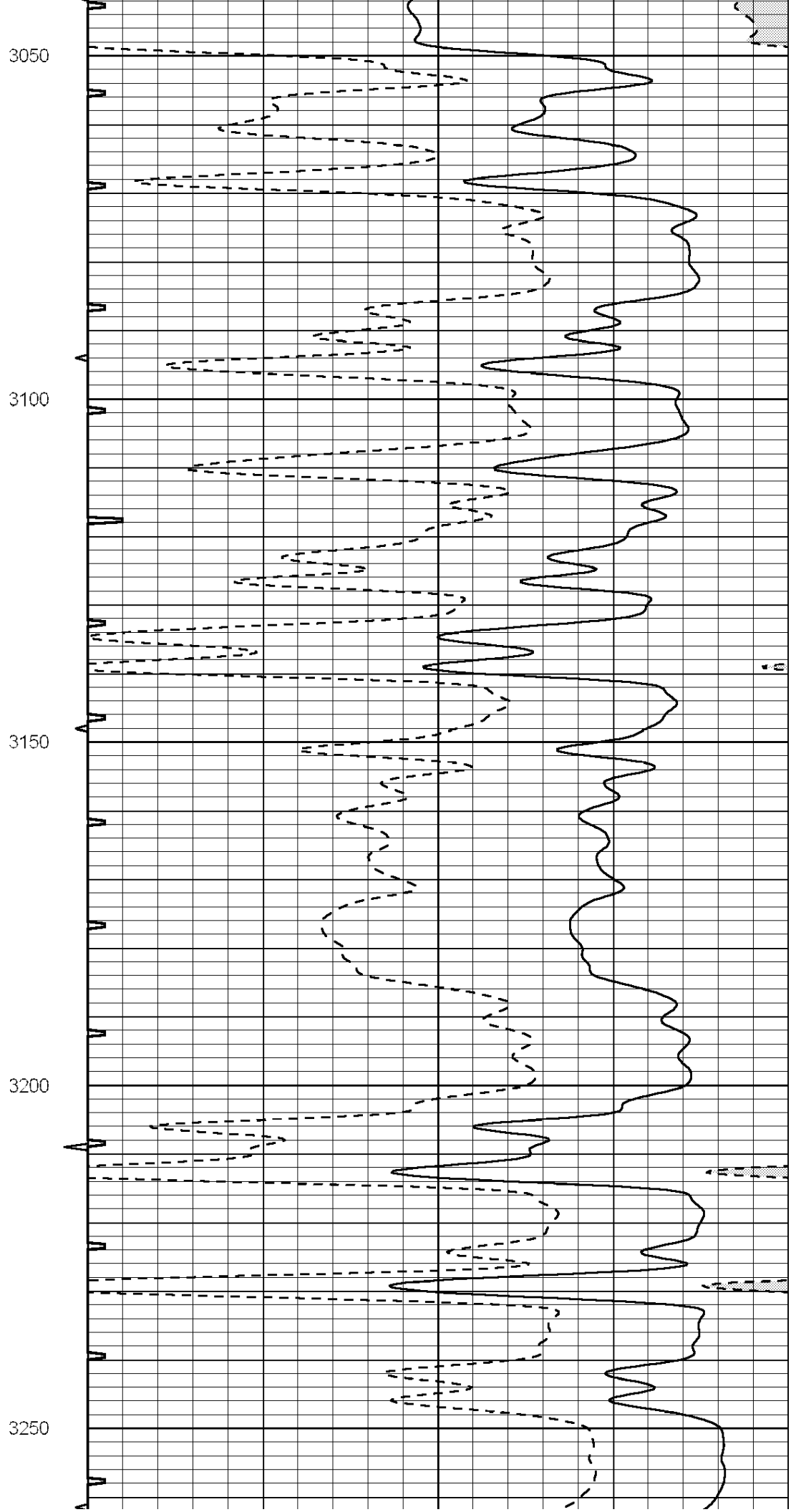
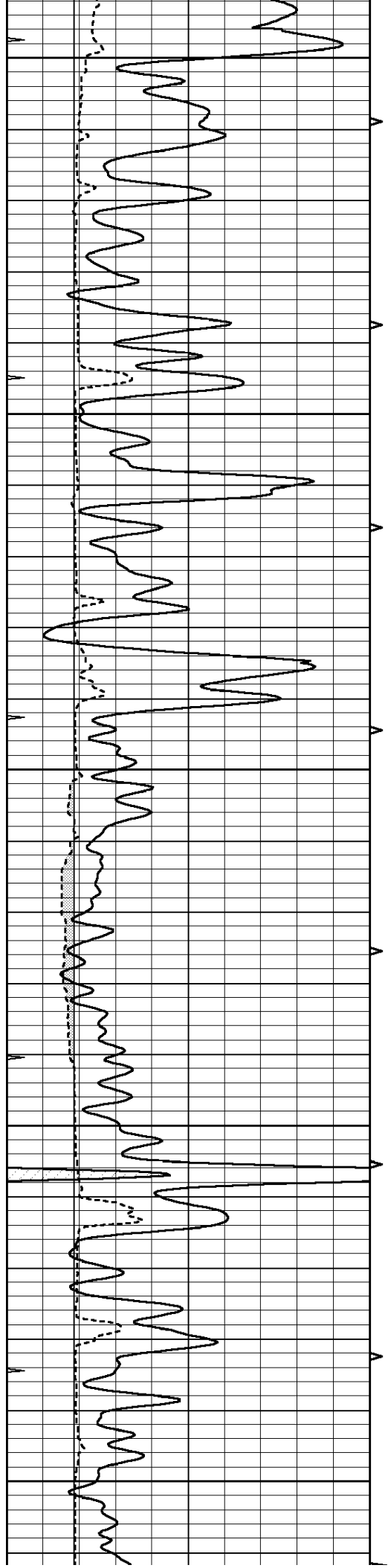


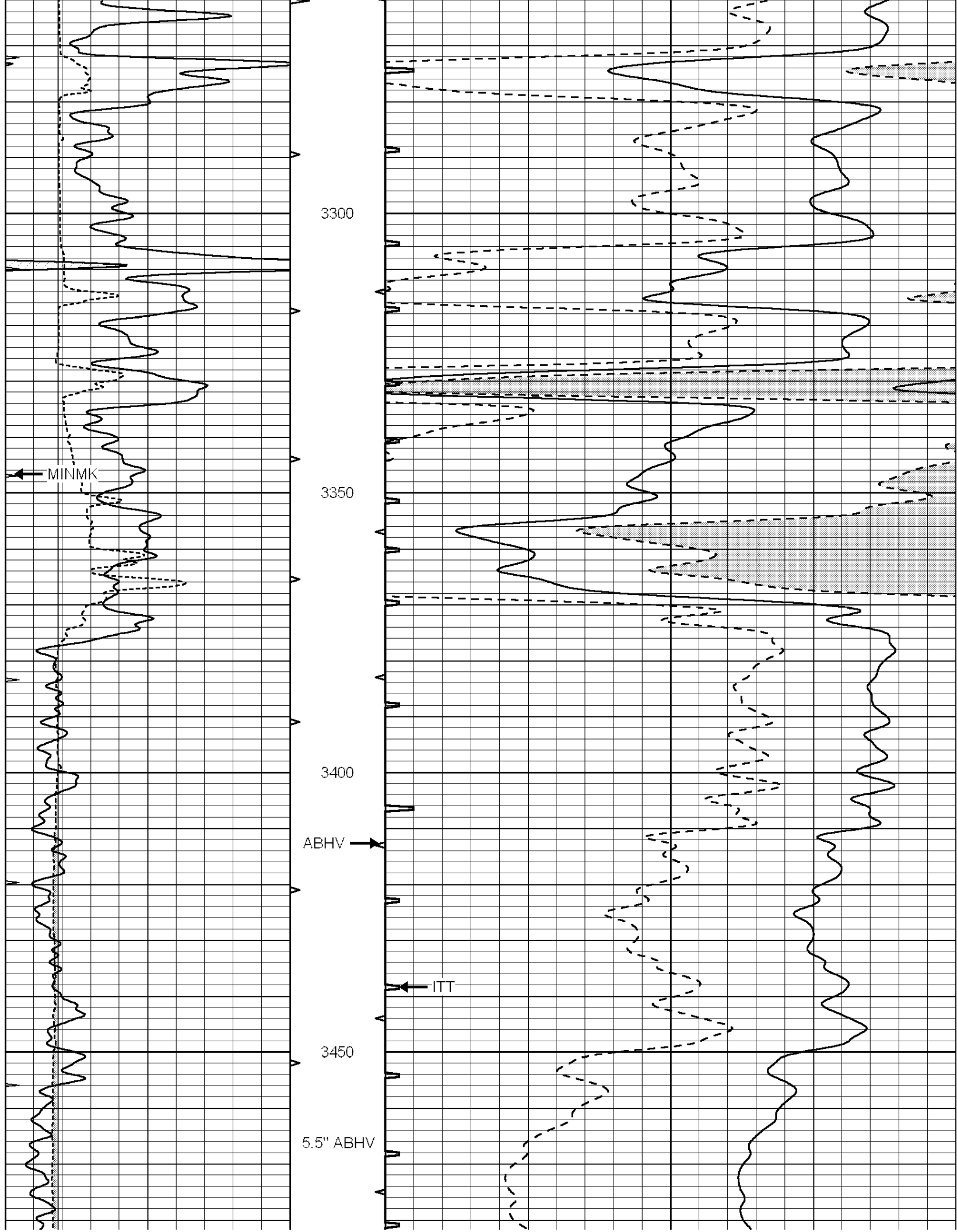












3300

3350

3400

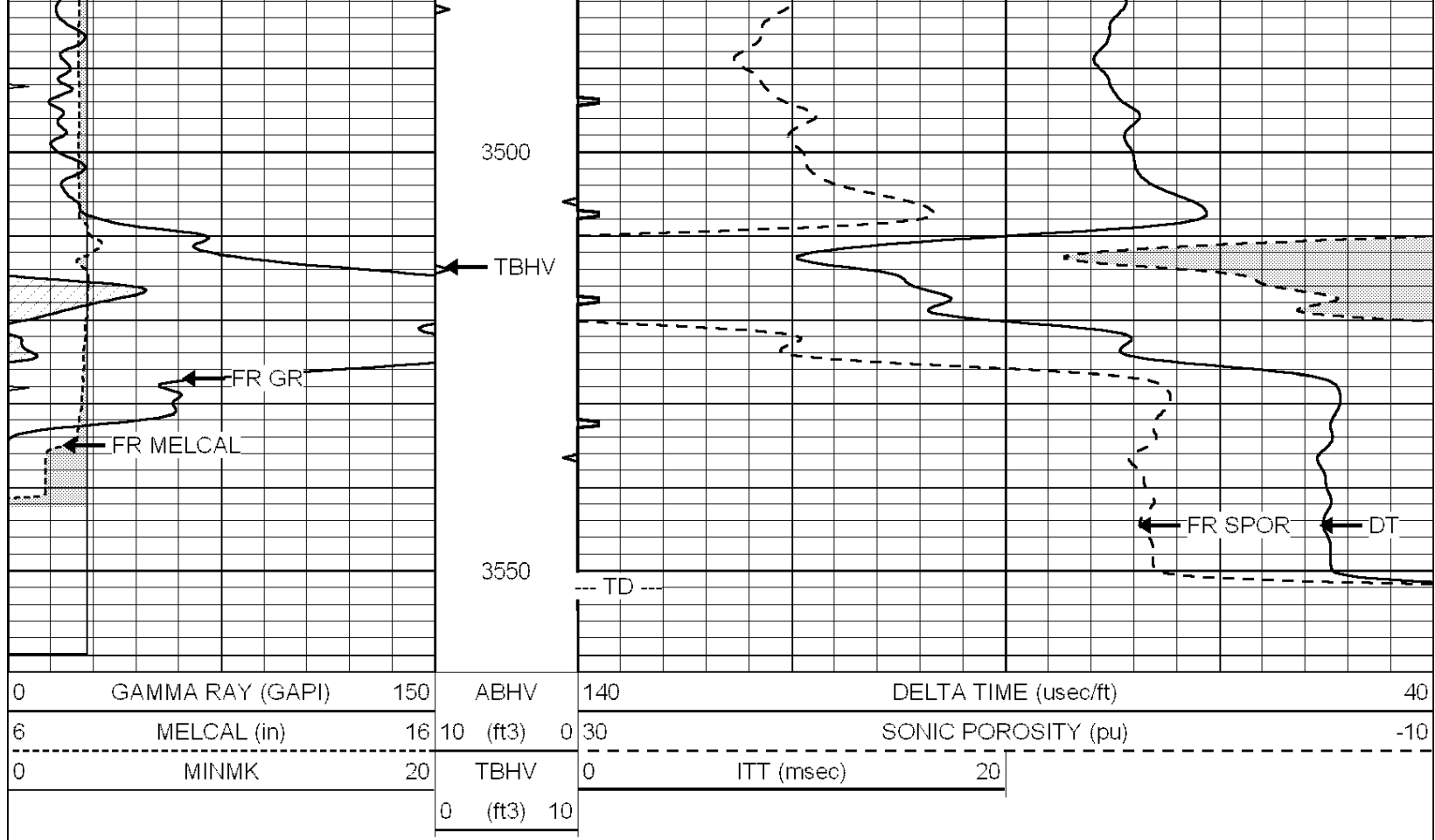
3450

MINMK

ABHV

ITT

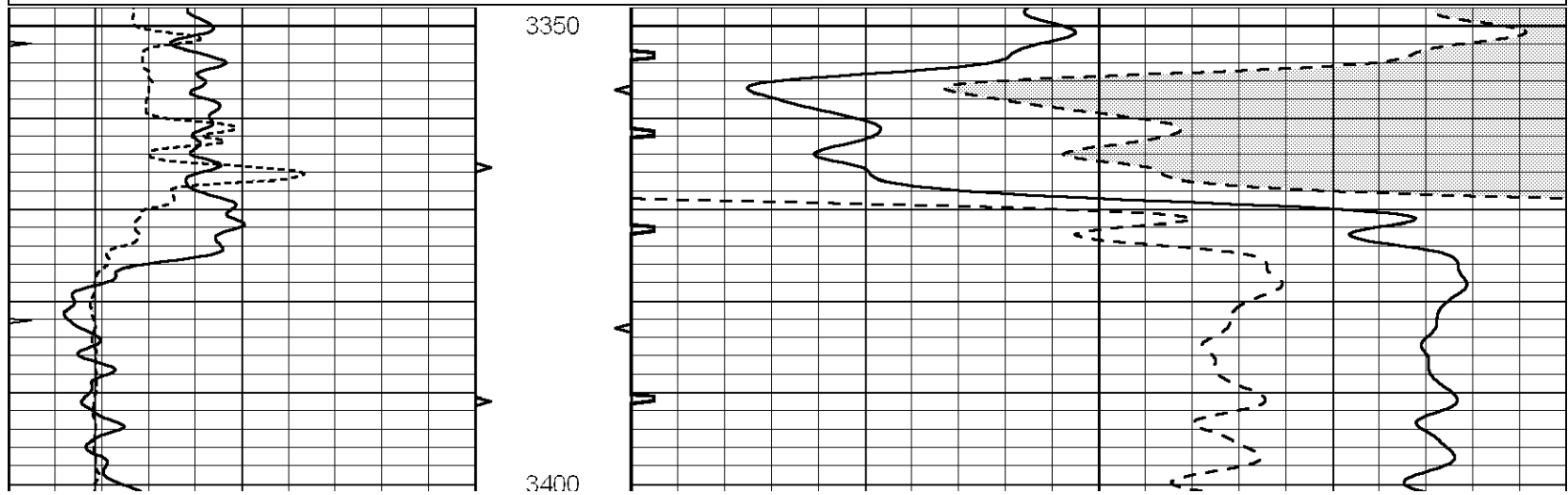
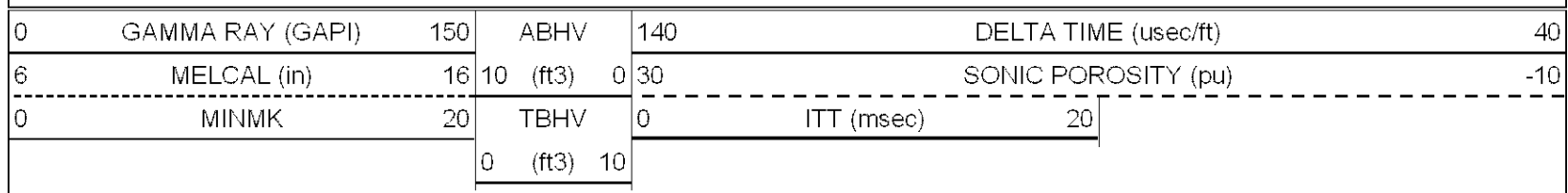
5.5' ABHV



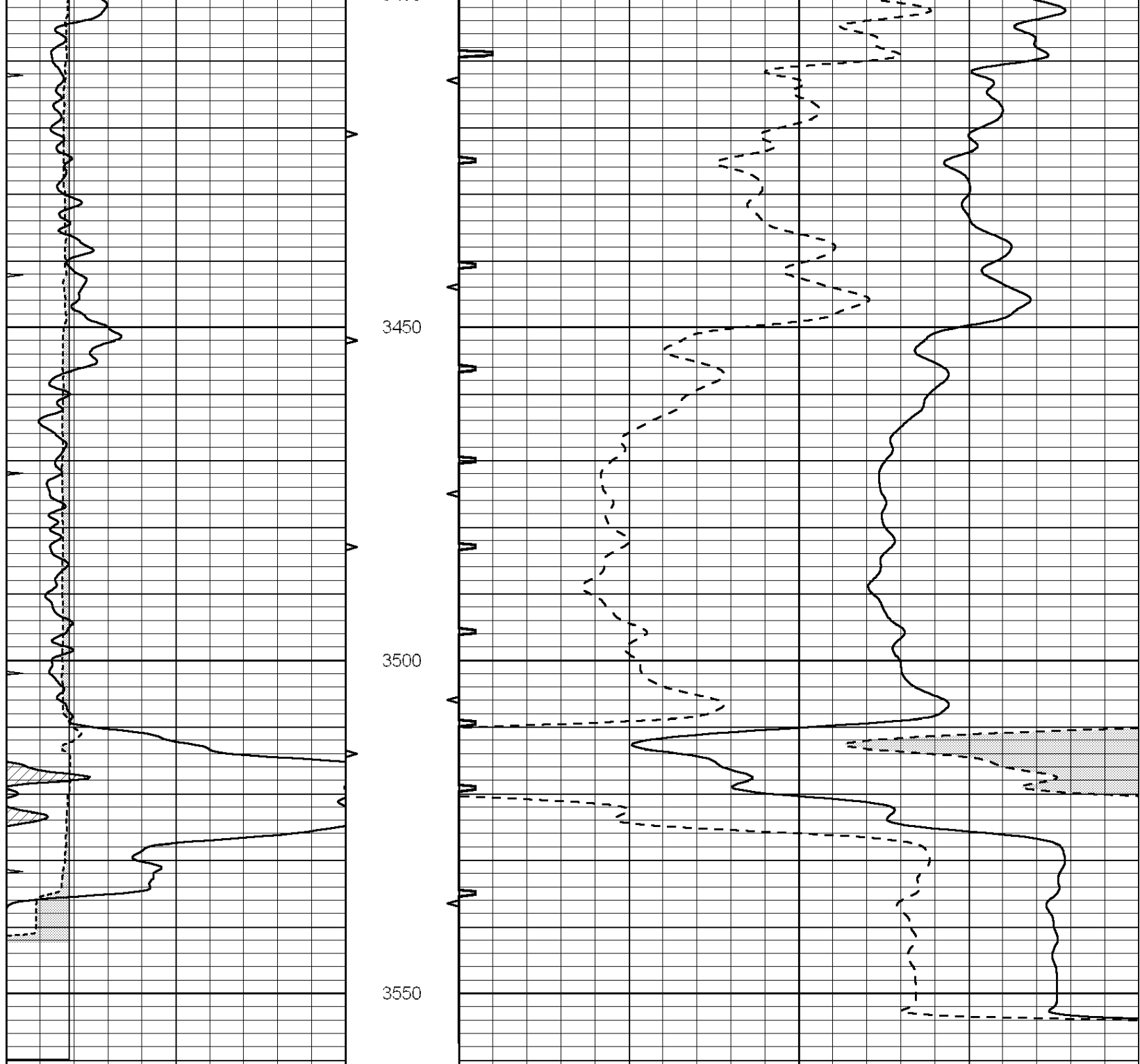
**COMPLETION  
& PRODUCTION  
SERVICES CO.**

# REPEAT SECTION

Database File: 010838ddn.db  
 Dataset Pathname: pass5.3  
 Presentation Format: slt  
 Dataset Creation: Tue Mar 19 13:08:21 2013  
 Charted by: Depth in Feet scaled 1:240







0	GAMMA RAY (GAPI)	150	ABHV	140	DELTA TIME (usec/ft)	40
6	MELCAL (in)	16	10 (ft3)	0 30	SONIC POROSITY (pu)	-10
0	MINMK	20	TBHV	0	ITT (msec)	20
			0 (ft3)	10		