



1 11/16" CBL
CASING COLLAR
VARIABLE DENSITY
LOG

Company	HORTON, JACK	Location:	S/2 N/2 NW NE 640' FN. & 1980' FEL	Other Services	PERF
Well	DYER # 17	API #:	15-125-32031-0000		
Field	WAYSIDE-HAVANA	County	MONTGOMERY	State	KANSAS
County	MONTGOMERY	Location:	SEC 5 TWP 34S RGE 14E		
State	KANSAS	Permanent Datum	GL	Elevation	885'
		Log Measured From	GL	Elevation	K.B. ...
		Drilling Measured From	GL	Elevation	D.F. ...
		Date	2-17-2011		GL: 885'
Run Number	ONE				
Depth Driller	830'				
Depth Logger	800'				
Bottom Logged Interval	798'				
Top Log Interval	SURFACE				
Open Hole Size	5.68"	Type Fluid	WATER		
Density / Viscosity	N/A	Max. Recorded Temp.	N/A		
Estimated Cement Top	SURFACE				
Time Well Ready	ON ARRIVAL				
Time Logger on Bottom	2:00 PM				
Equipment Number	OW3	Recorded By	HOHINY,OK		
Location	BRYON MARSHALL	Witnessed By	MR. JONES		
Run Number	Bit	From	To	Size	Weight
	From	To	Size	Weight	From
					To
Casing Record	Size	Wgt/Ft	Top	Bottom	
Surface String					
Production String	4.5"		SURFACE	TD	
Line					

<<< Fold Here >>>

All interpretations are opinions based on inferences from electrical or other measurements and we cannot and do not guarantee the accuracy or correctness of any interpretation, and we shall not, except in the case of gross or willful negligence on our part, be liable or responsible for any loss, costs, damages, or expenses incurred or sustained by anyone resulting from any interpretation made by any of our officers, agents or employees. These interpretations are also subject to our general terms and conditions set out in our current Price Schedule.

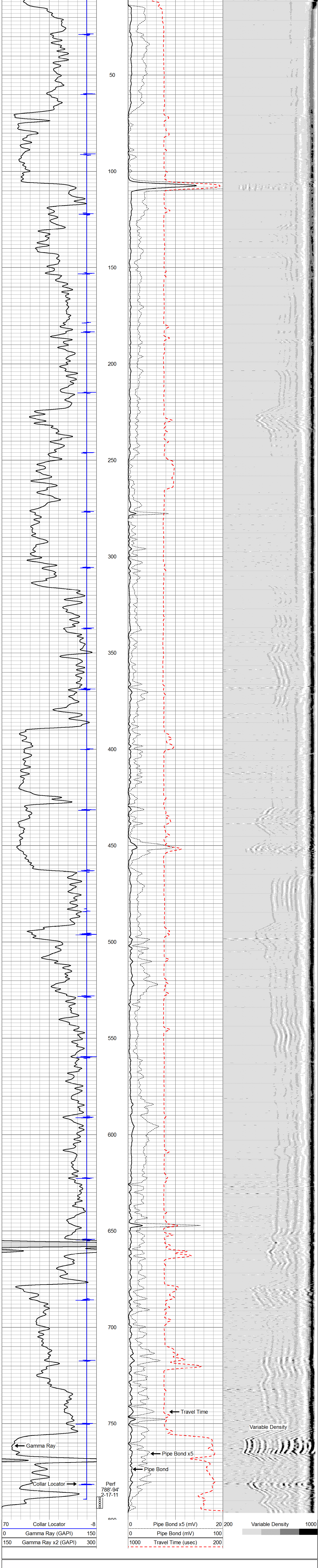
Comments

FILE# OW3-1380CBL
THANK YOU FOR USING OSAGE WIRELINE!

OSAGE WIRELINE GR/CBL/VDL

Database File: ow3-1380cbl horton jack dyer 17.db
 Dataset Pathname: pass1
 Presentation Format: 462 bond
 Dataset Creation: Tue Jan 20 14:27:32 2004 by Log Open-Cased 071220
 Charted by: Depth in Feet scaled 1:240

70	Collar Locator	-8	0	Pipe Bond x5 (mV)	20	200	Variable Density	1000
0	Gamma Ray (GAPI)	150	0	Pipe Bond (mV)	100			
150	Gamma Ray x2 (GAPI)	300	1000	Travel Time (usec)	200			



OSAGE WIRELINE GR/CBL/VDL

Sensor	Offset (ft)	Schematic	Description	Len (ft)	OD (in)	Wt (lb)
CHD	12.33	[Schematic diagram of cable head]	STNDRD Standard Cable Head	1.00	1.69	10.00
CBLPROBE	11.33					
CCL	10.33					
GR	7.42					
WVF3FT	4.50					
WVF5FT	3.58					
WVFSYNC	0.00					
			CBLPROBE-PRB169SLIM (000908) PROBE 1 11/16 GR/CCL/CBL	11.33	1.69	20.00

Dataset: ow3-1380cbl horton jack dyer 17.db: field/well/run1/pass1
 Total Length: 12.33 ft
 Total Weight: 30.00 lb
 O.D.: 1.69 in