

LOG-TECH



DIGITAL LOG (785) 625-3858

Dual Induction Log

API No.	15-171-20,886-00-00	
Company	Landmark Resources, Inc.	
Well	Frick #1-8	
Field	Wildcat	
County	Scott	State Kansas
Location	1790' FNL & 860' FWL	
Sec: 8	Twp: 17 S	Rge: 33 W
Permanent Datum	Ground Level	Elevation 3081
Log Measured From	Kelly Bushing	11 Ft. Above Perm. Datum
Drilling Measured From	Kelly Bushing	K.B. 3092 D.F. 3081 G.L. 3081

Date	7/16/2012
Run Number	One
Depth Driller	4906
Depth Logger	4904
Bottom Logged Interval	4903
Top Log Interval	250
Casing Driller	8.625 @ 269
Casing Logger	261
Bit Size	7.875
Type Fluid in Hole	Chemical
Salinity, ppm CL	6000
Density / Viscosity	9.2 57
pH / Fluid Loss	10.0 10.2
Source of Sample	Flowline
Rm @ Meas. Temp	.55 @ 86
Rmf @ Meas. Temp	.41 @ 86
Rmc @ Meas. Temp	.74 @ 86
Source of Rmf / Rmc	Charts
Rm @ BHT	.38 @ 125
Operating Rig Time	5 1/2 Hours
Max Rec. Temp. F	125
Equipment Number	17
Location	Hays
Recorded By	D.Kerr
Witnessed By	Terry McLeod

<<< Fold Here >>>

All interpretations are opinions based on inferences from electrical or other measurements and we cannot and do not guarantee the accuracy or correctness of any interpretation, and we shall not, except in the case of gross or willful negligence on our part, be liable or responsible for any loss, costs, damages, or expenses incurred or sustained by anyone resulting from any interpretation made by any of our officers, agents or employees. These interpretations are also subject to our general terms and conditions set out in our current Price Schedule.

Comments

Thank you for using Log-Tech, Inc.
 (785) 625-3858
 Healy KS, West to HWY 83,
 5 West, 3/4 South,
 1/4 West, North Into

Database File: landmark_frick_1_8hd.db
 Dataset Pathname: DIL/landstk
 Presentation Format: dil2in
 Dataset Creation: Mon Jul 16 22:42:17 2012
 Charted by: Depth in Feet scaled 1:600

0 Gamma Ray 150
-200 SP 0

0 Shallow Resistivity 50
0 Deep Resistivity 50

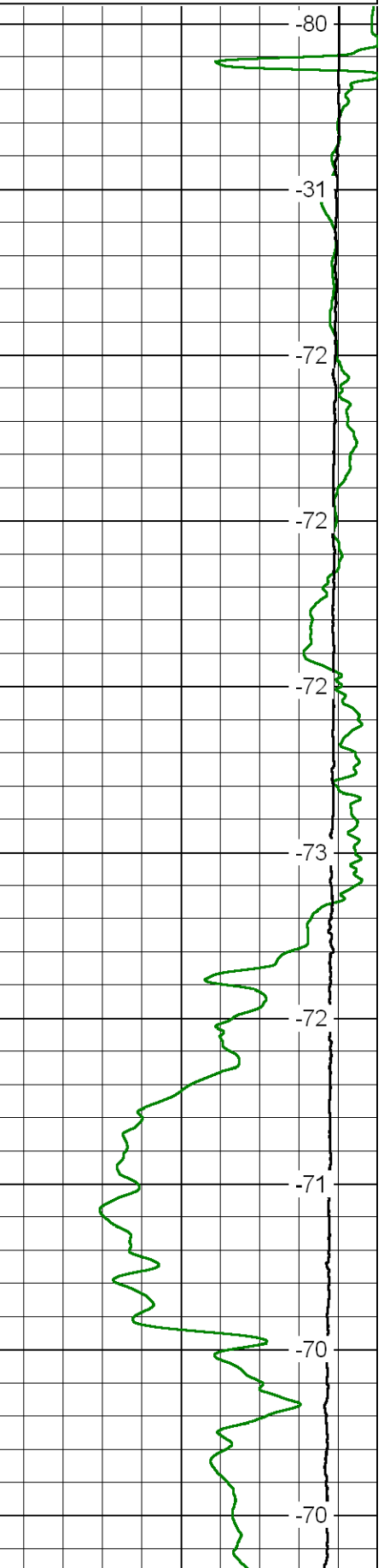
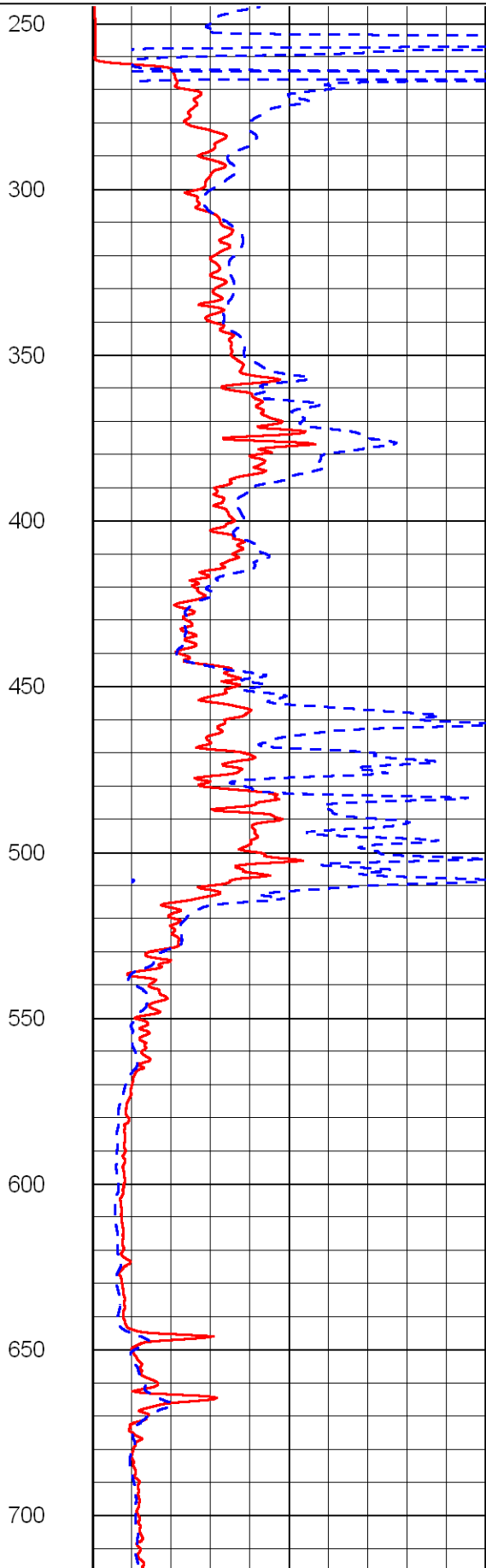
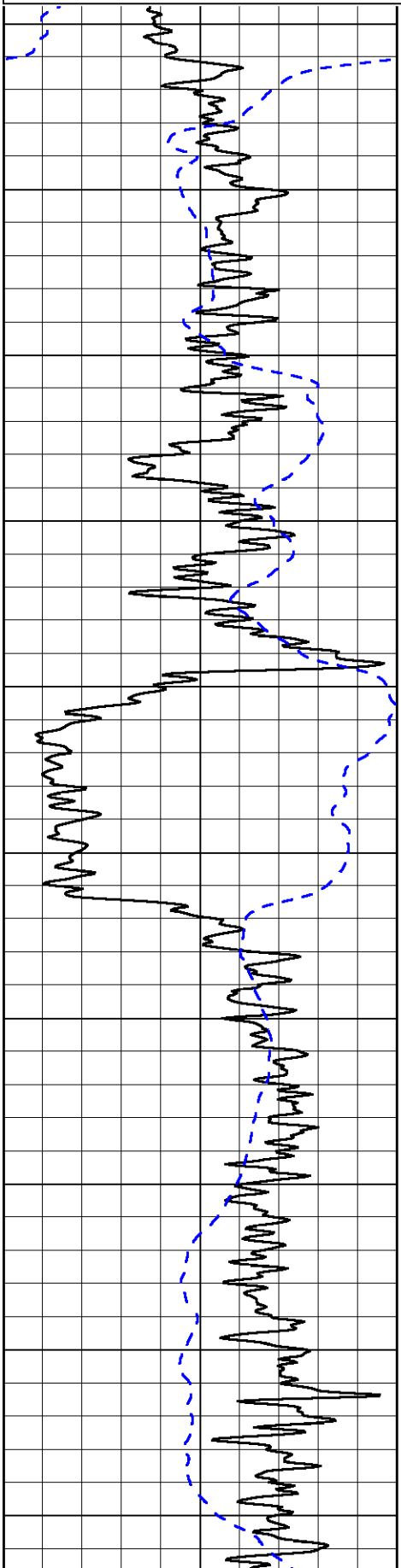
LSPD

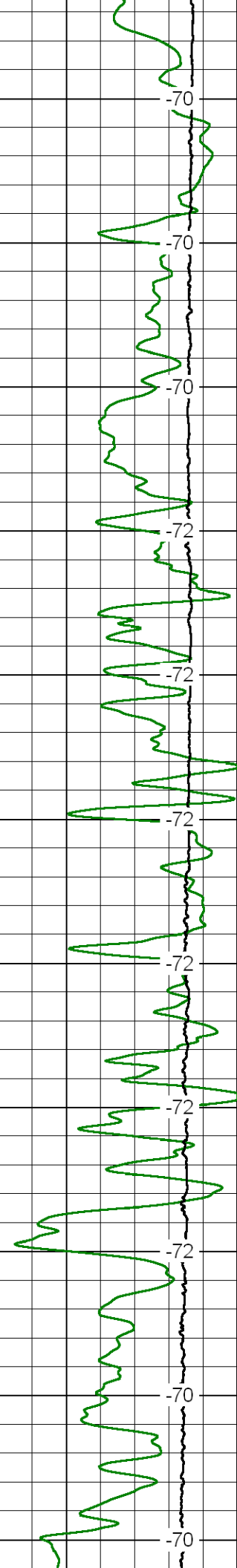
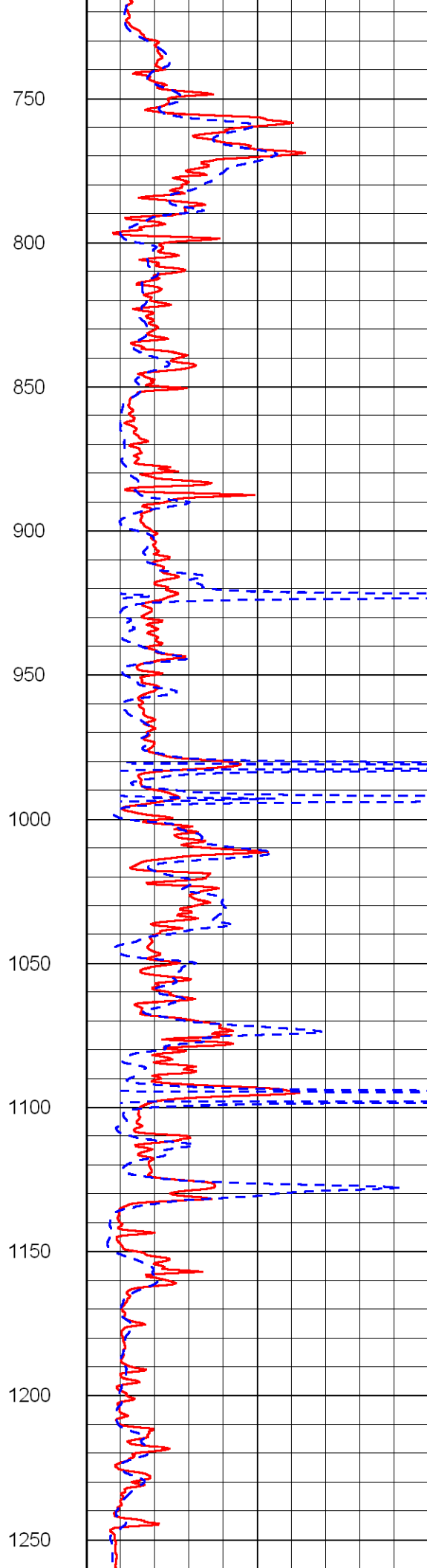
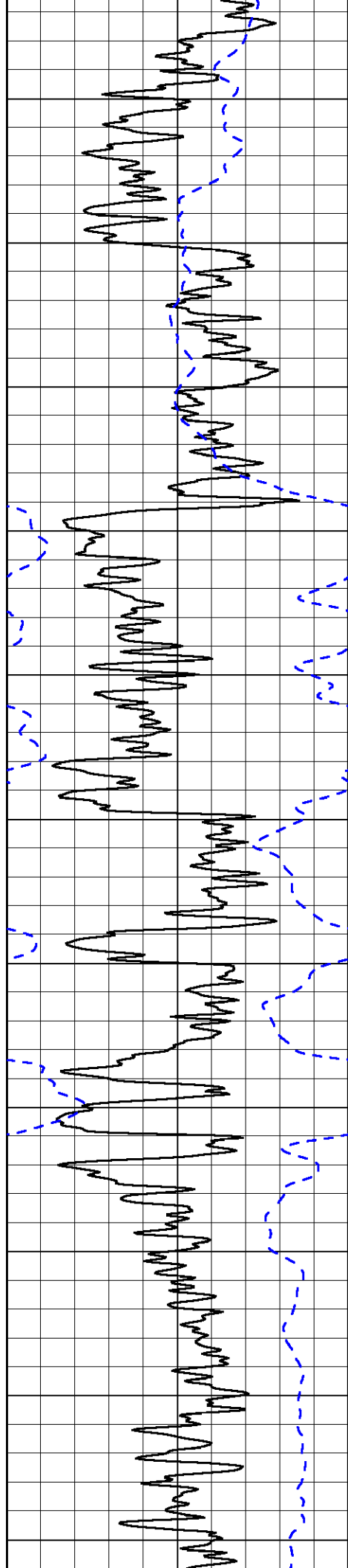
1000 Conductivity 0

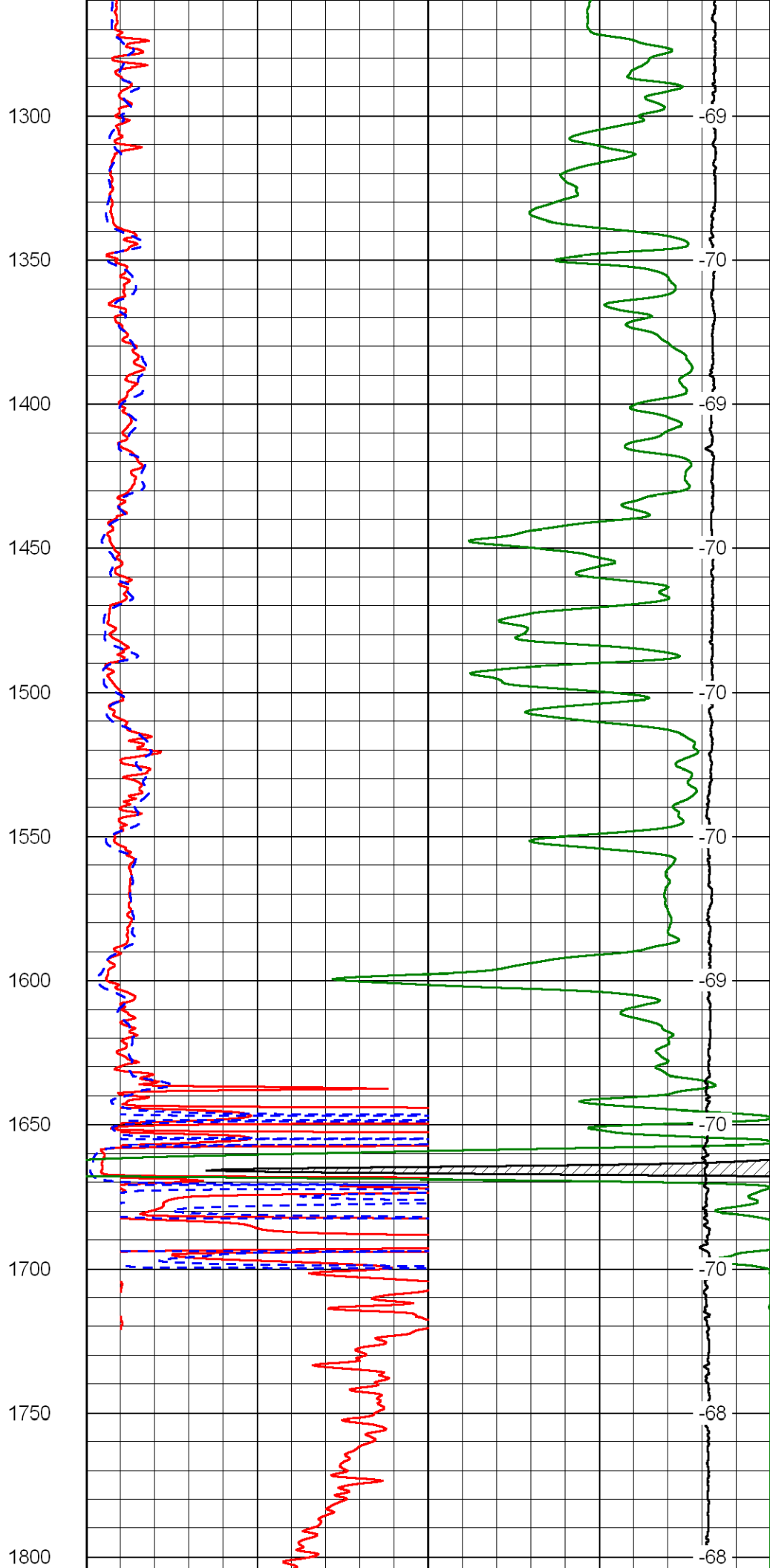
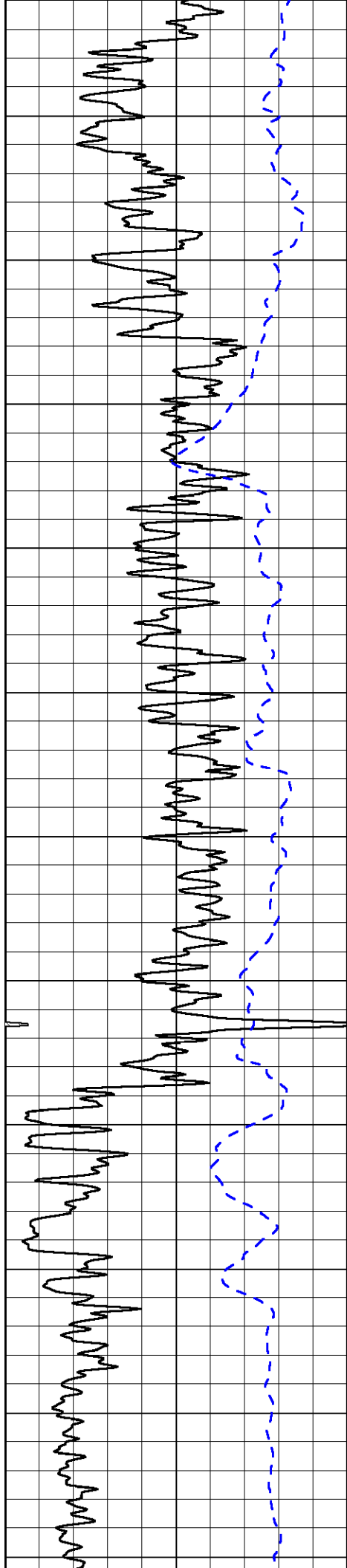
15000 Line Tension 0

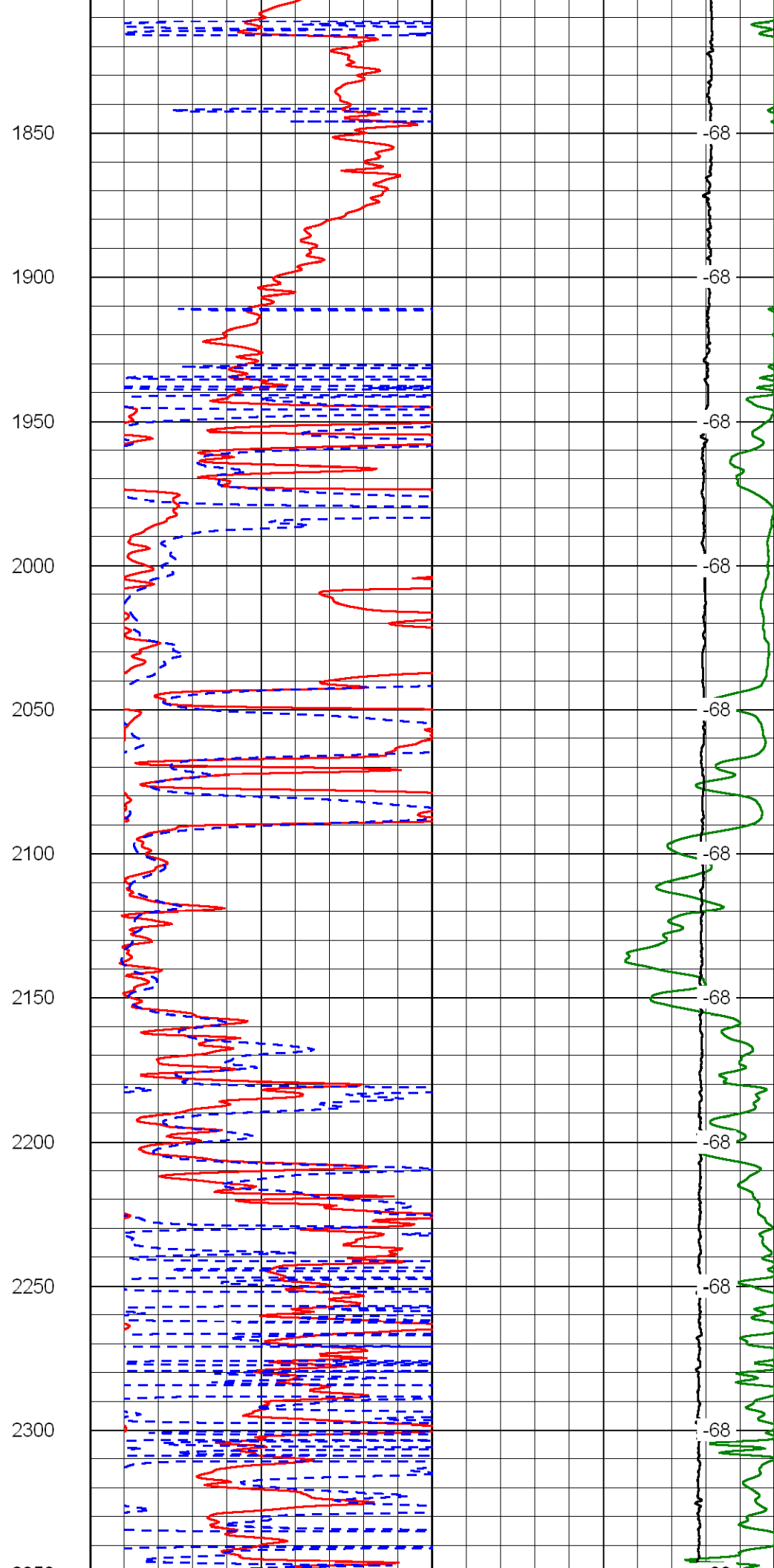
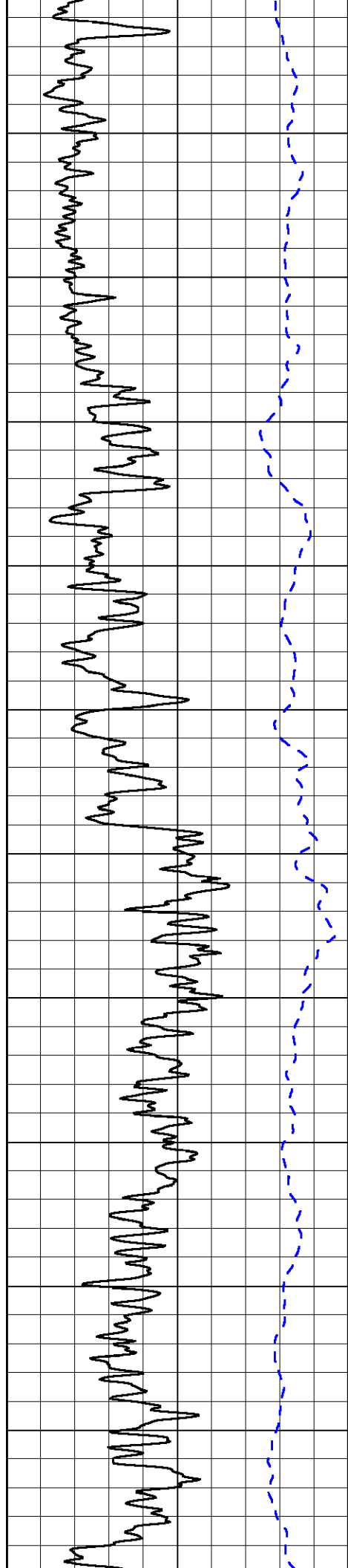
50 Shallow Resistivity 500

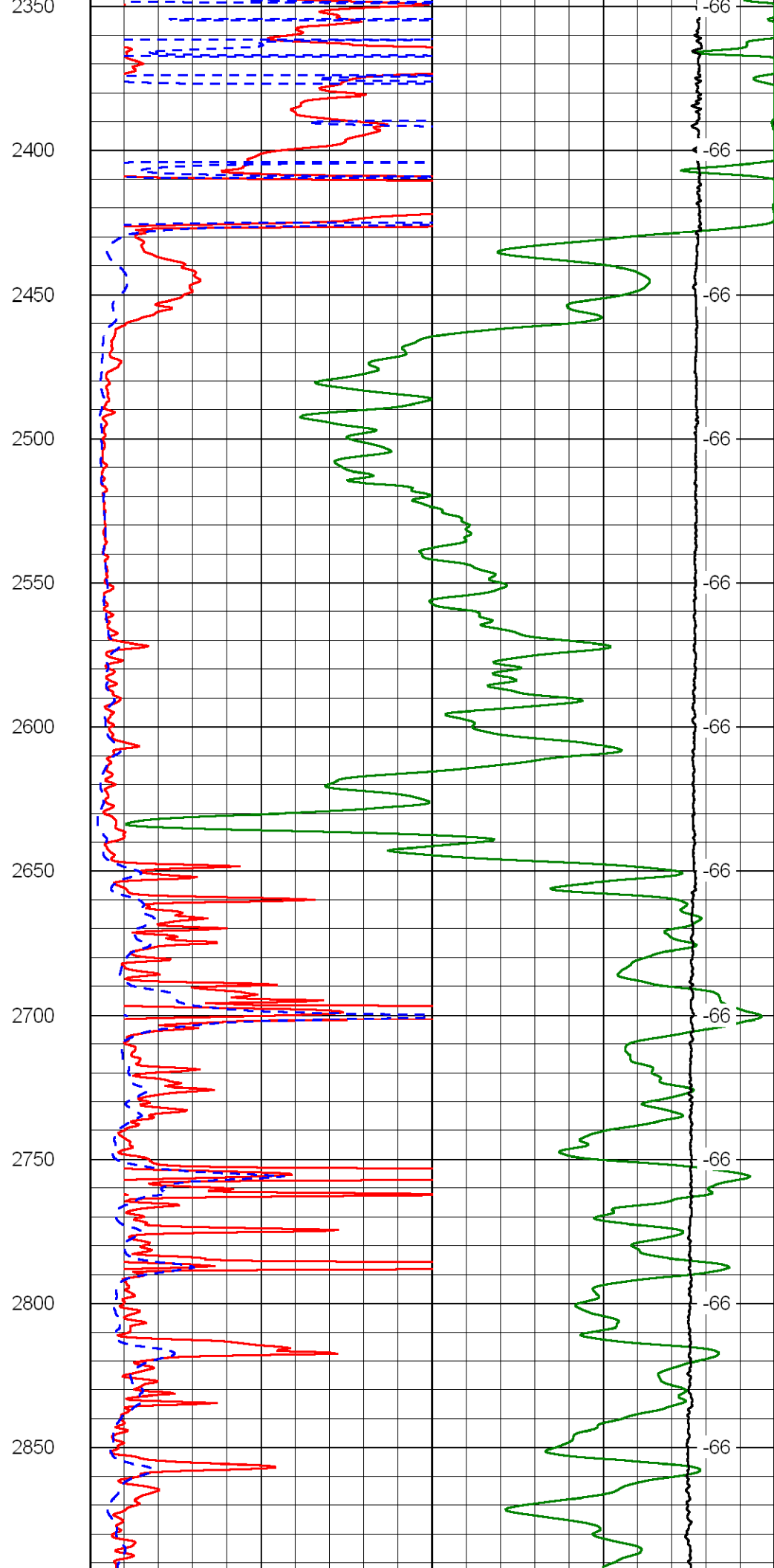
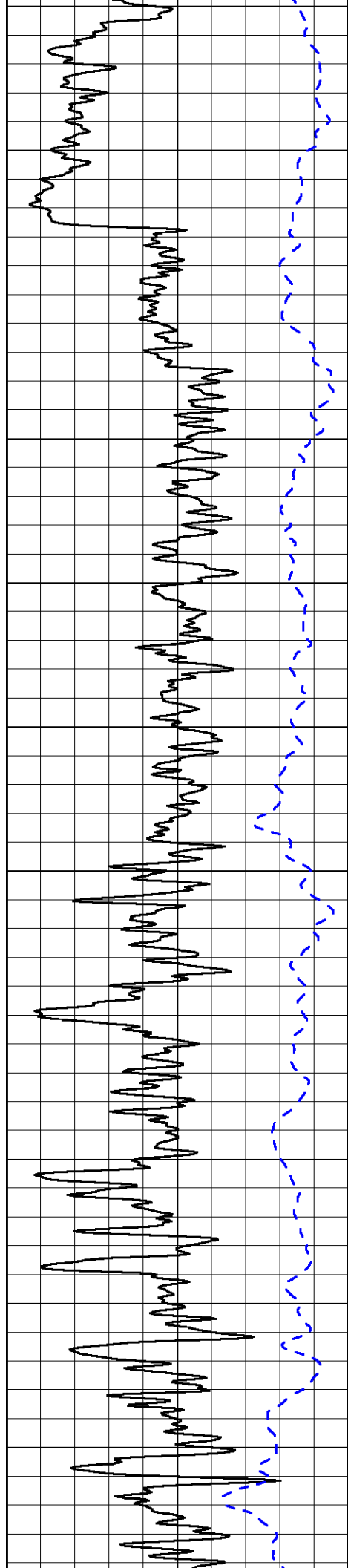
50 Deep Resistivity 500

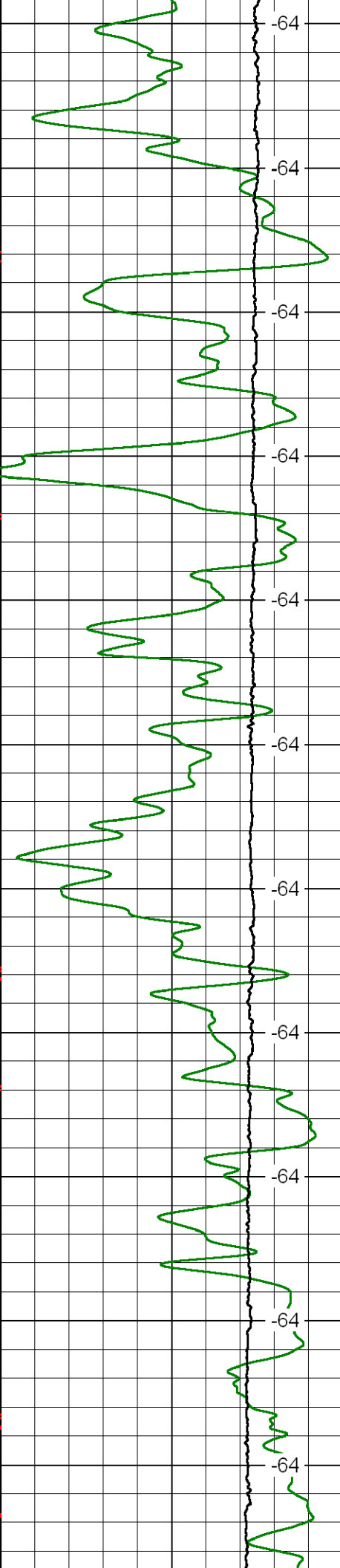
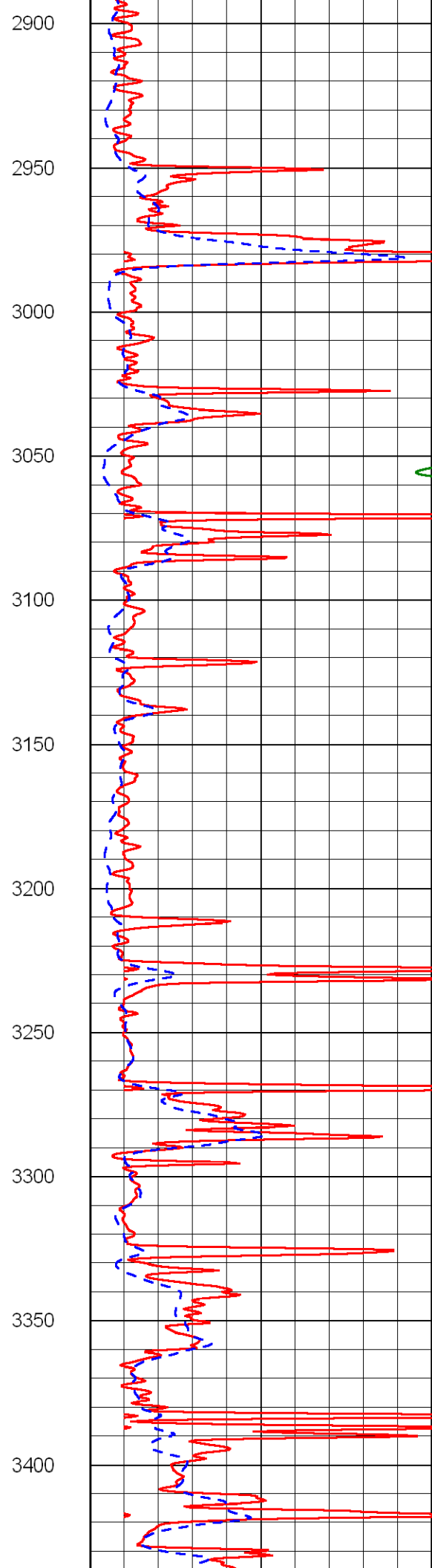
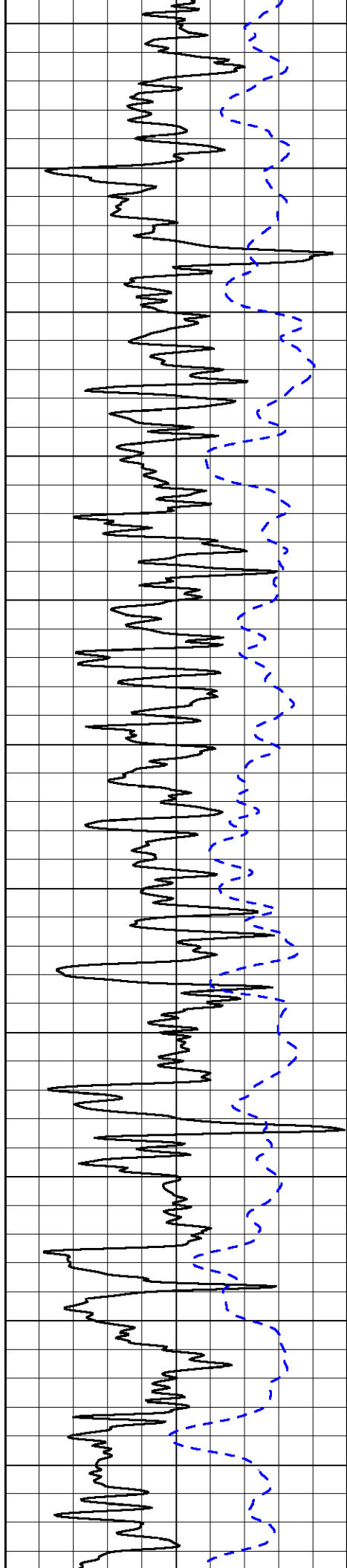


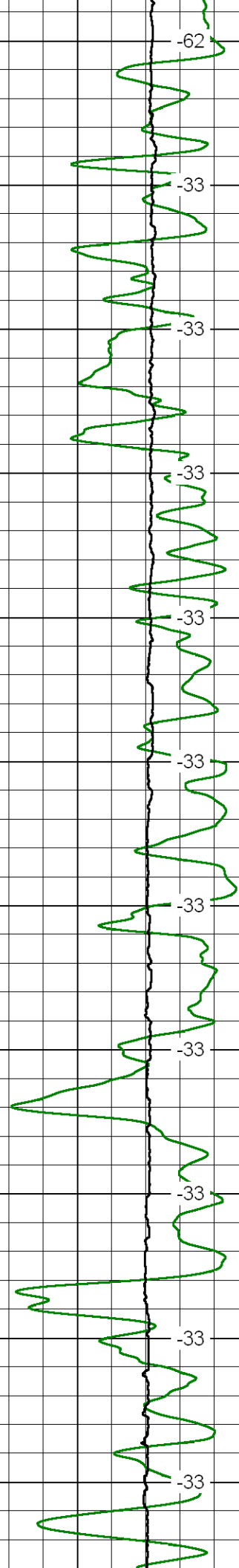
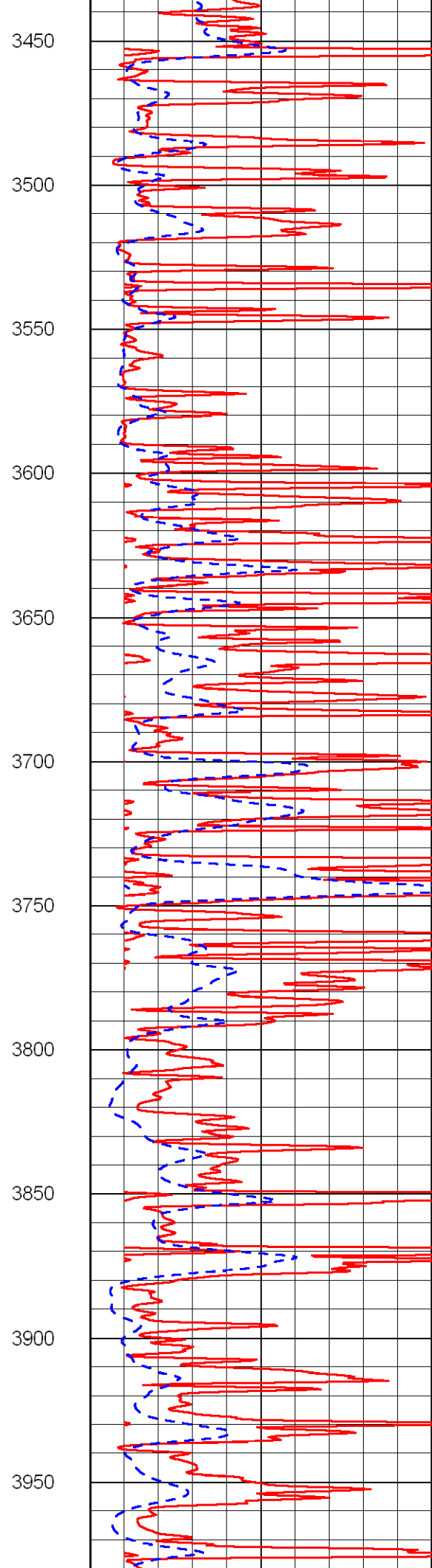
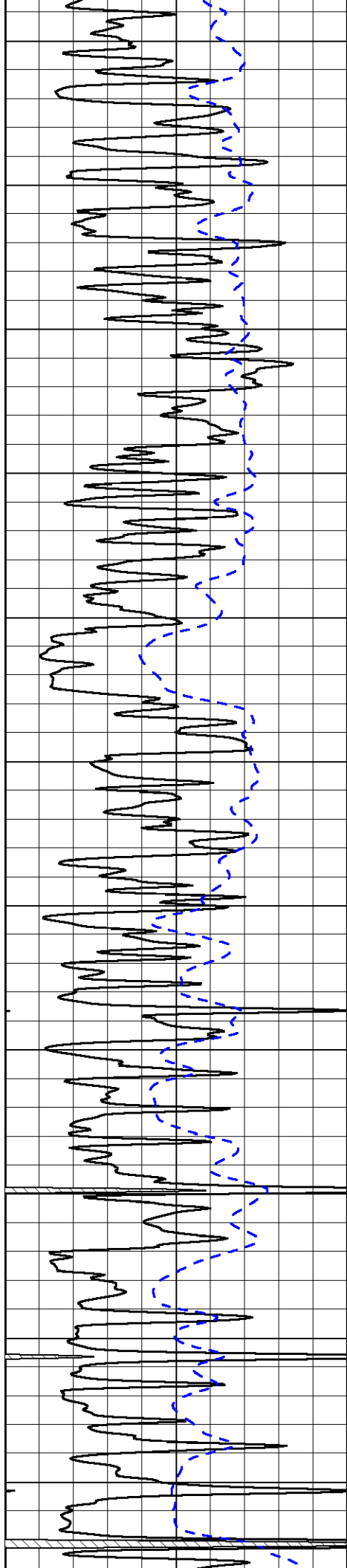


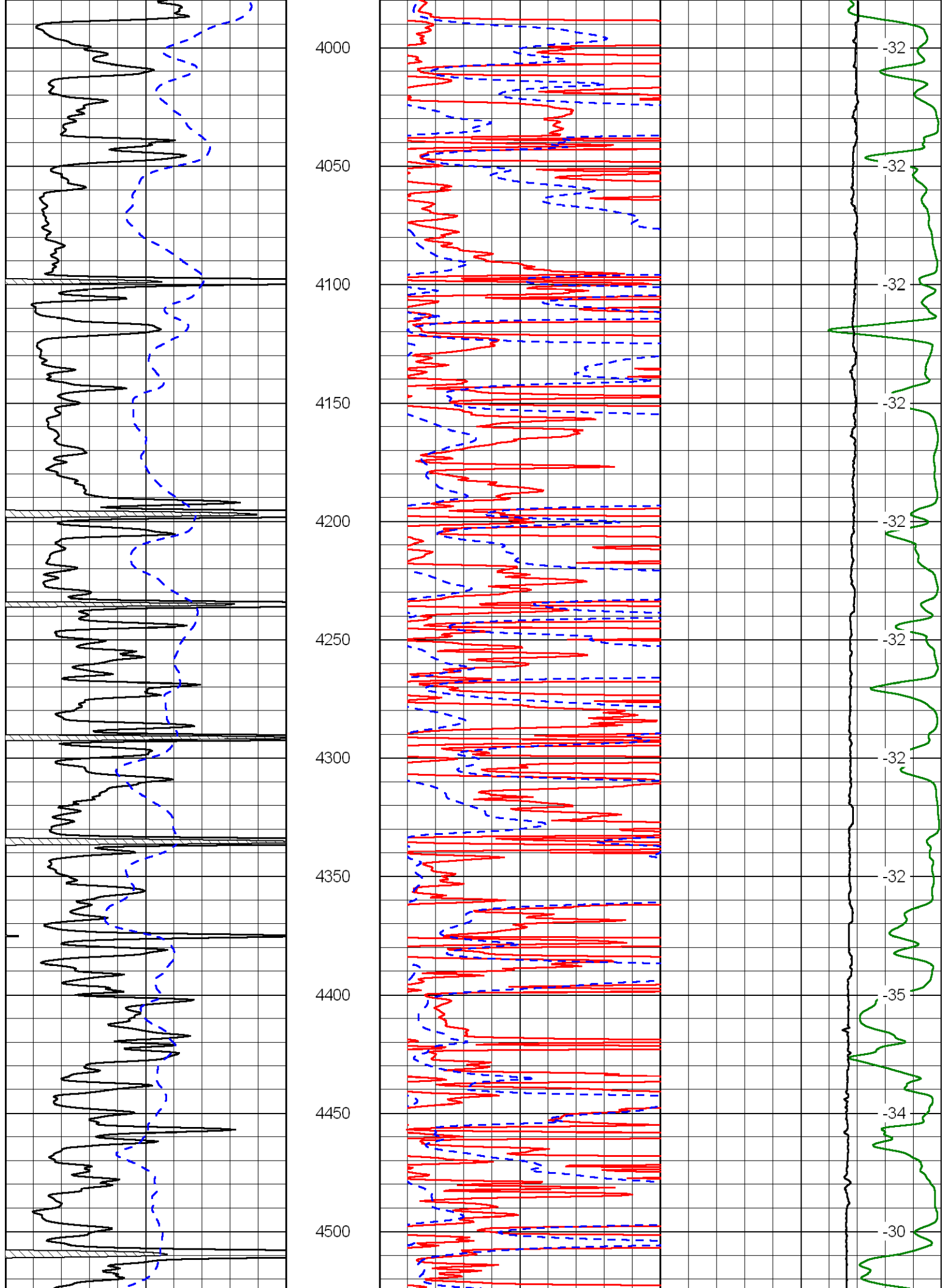


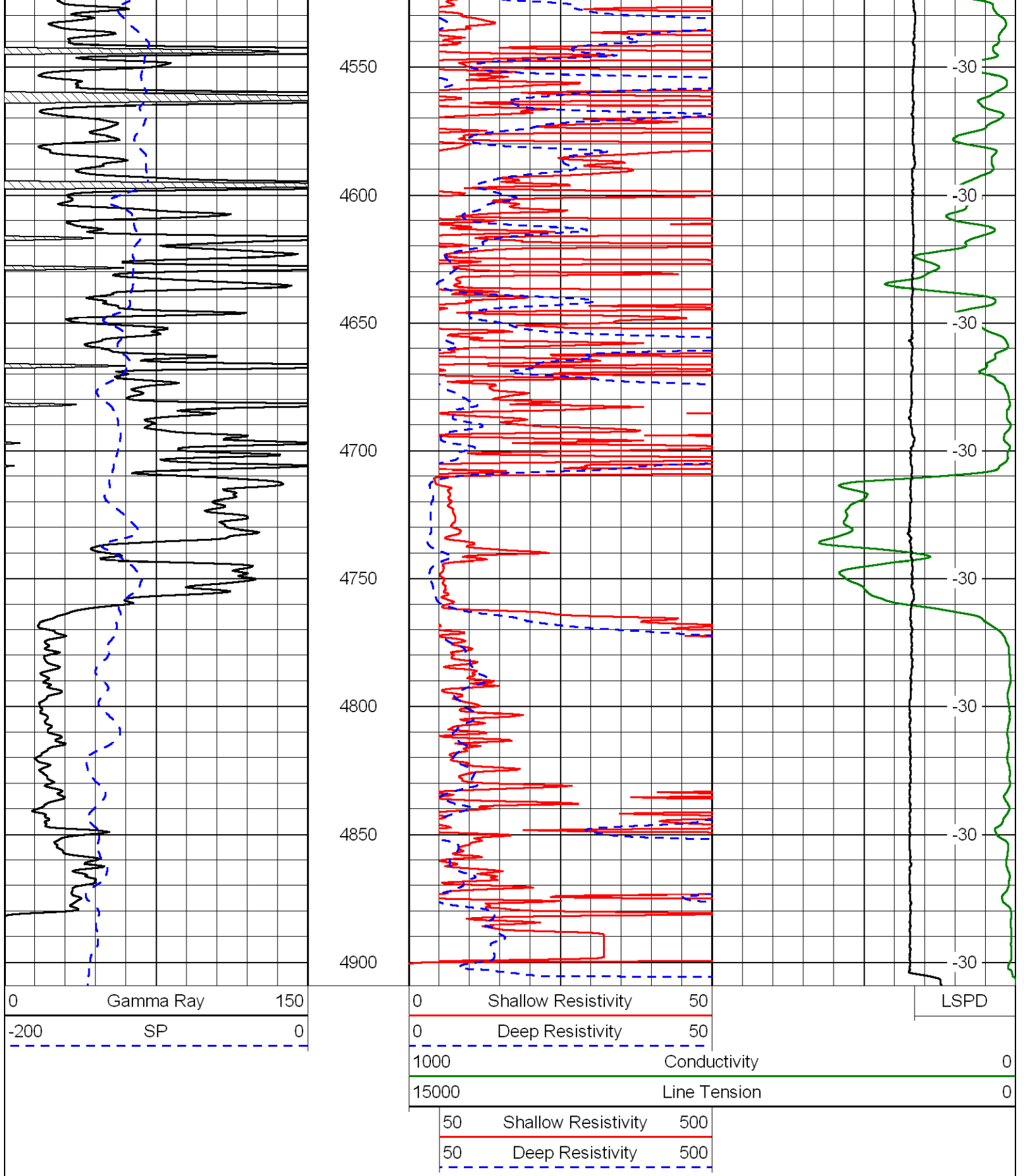










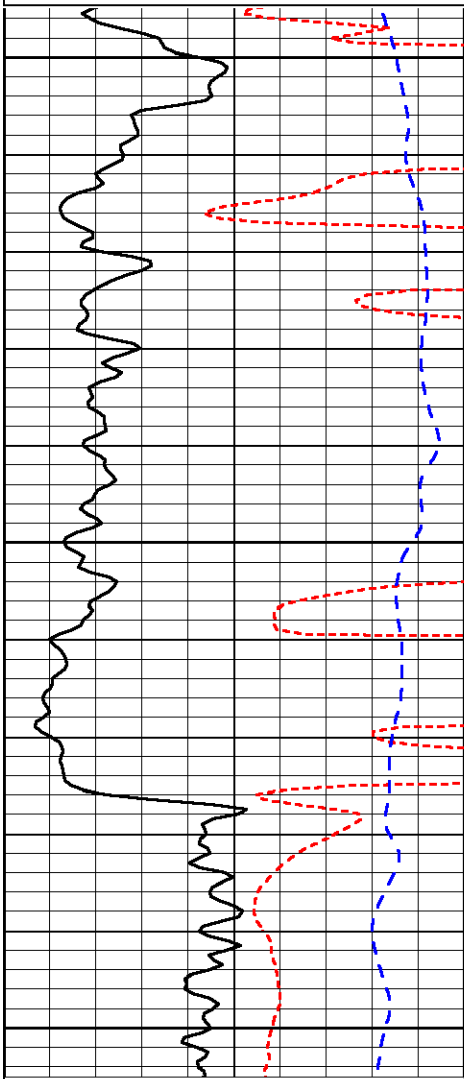


Database File: landmark_frick_1_8hd.db
 Dataset Pathname: DIL/landstk
 Presentation Format: dil
 Dataset Creation: Mon Jul 16 22:42:17 2012
 Charted by: Depth in Feet scaled 1:240



-200 SP 0

0.2 Shallow Resistivity 2000
 10000 Line Tension 0

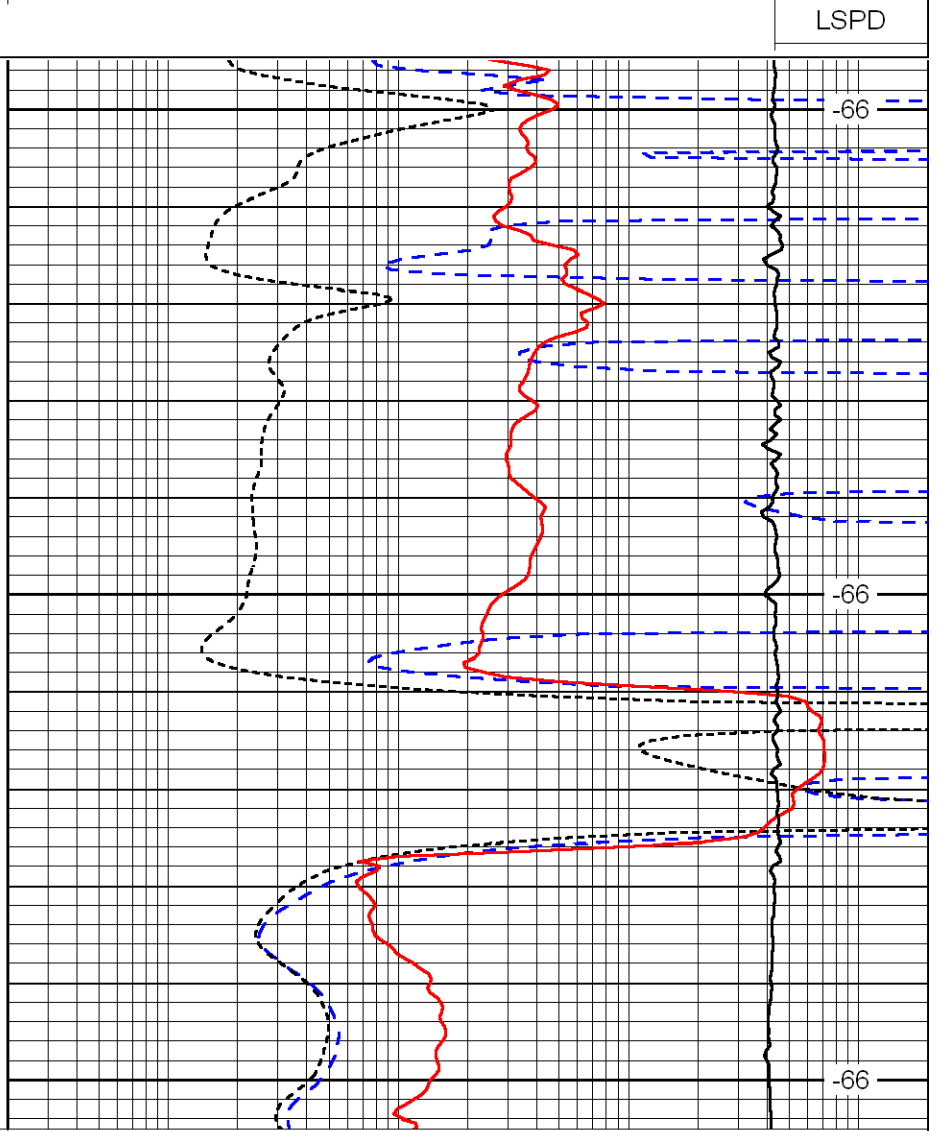


2350

2400

2450

0 Gamma Ray 150
 -160 RXO/RT 40
 -200 SP 0



LSPD

-66

-66

-66

0.2 Deep Resistivity 2000
 0.2 Medium Resistivity 2000
 0.2 Shallow Resistivity 2000
 10000 Line Tension 0

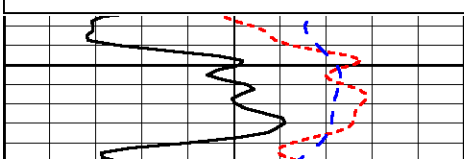
LSPD

Database File: landmark_frick_1_8hd.db
 Dataset Pathname: DIL/landstk
 Presentation Format: dil
 Dataset Creation: Mon Jul 16 22:42:17 2012
 Charted by: Depth in Feet scaled 1:240

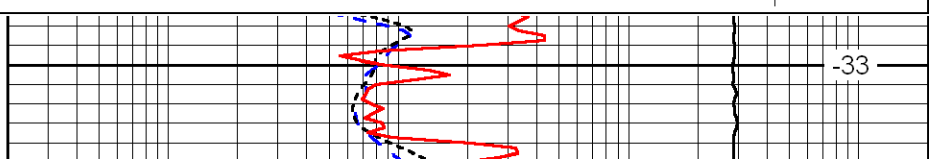
0 Gamma Ray 150
 -160 RXO/RT 40
 -200 SP 0

0.2 Deep Resistivity 2000
 0.2 Medium Resistivity 2000
 0.2 Shallow Resistivity 2000
 10000 Line Tension 0

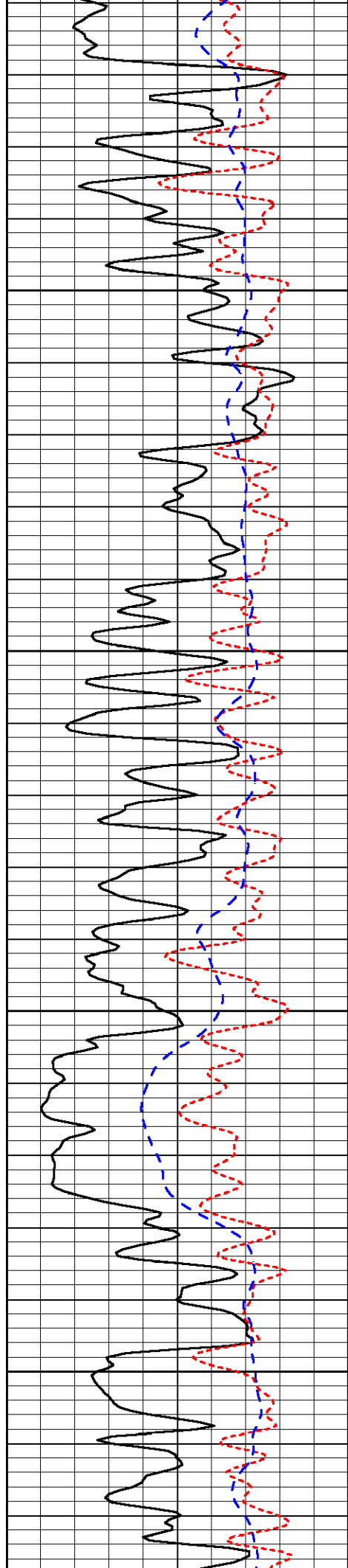
LSPD



3500



-33

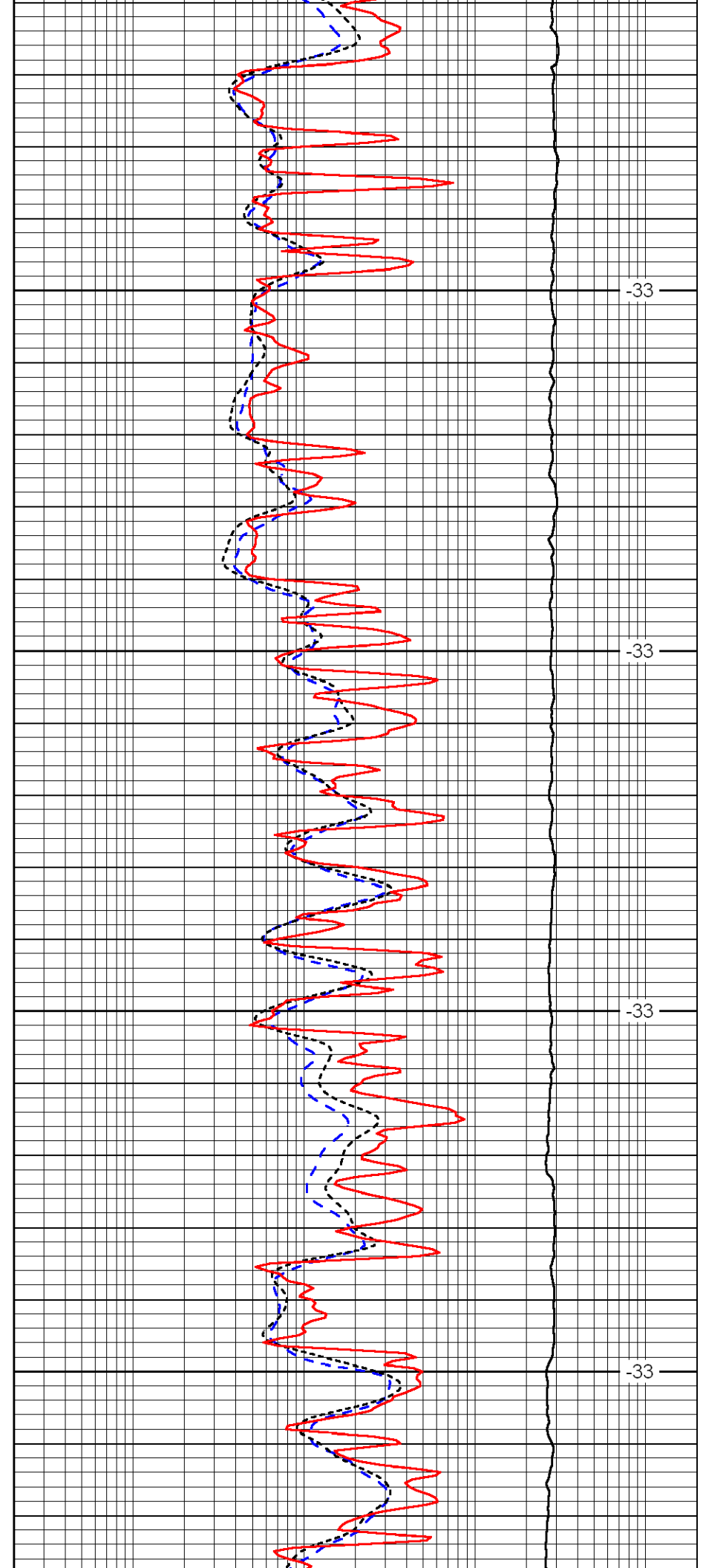


3550

3600

3650

3700

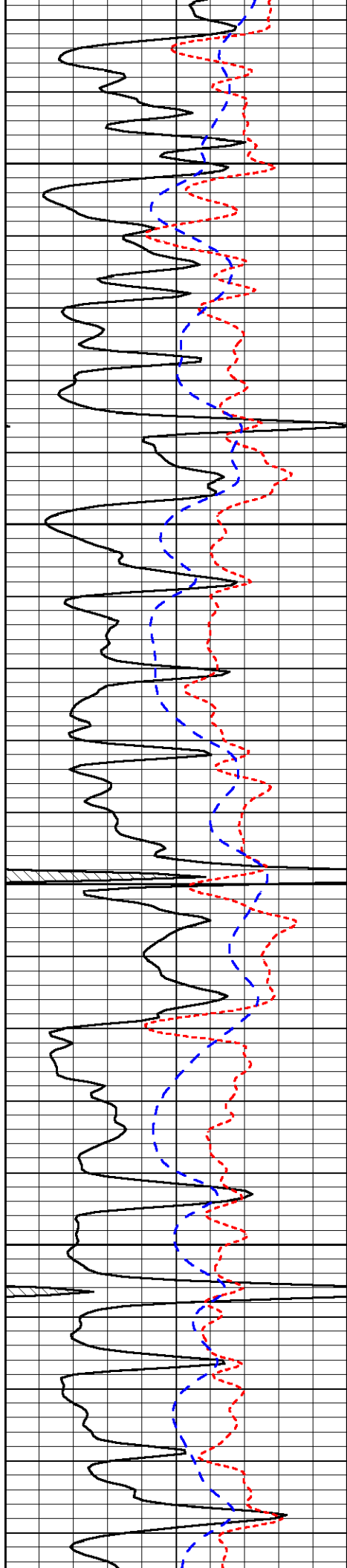


-33

-33

-33

-33

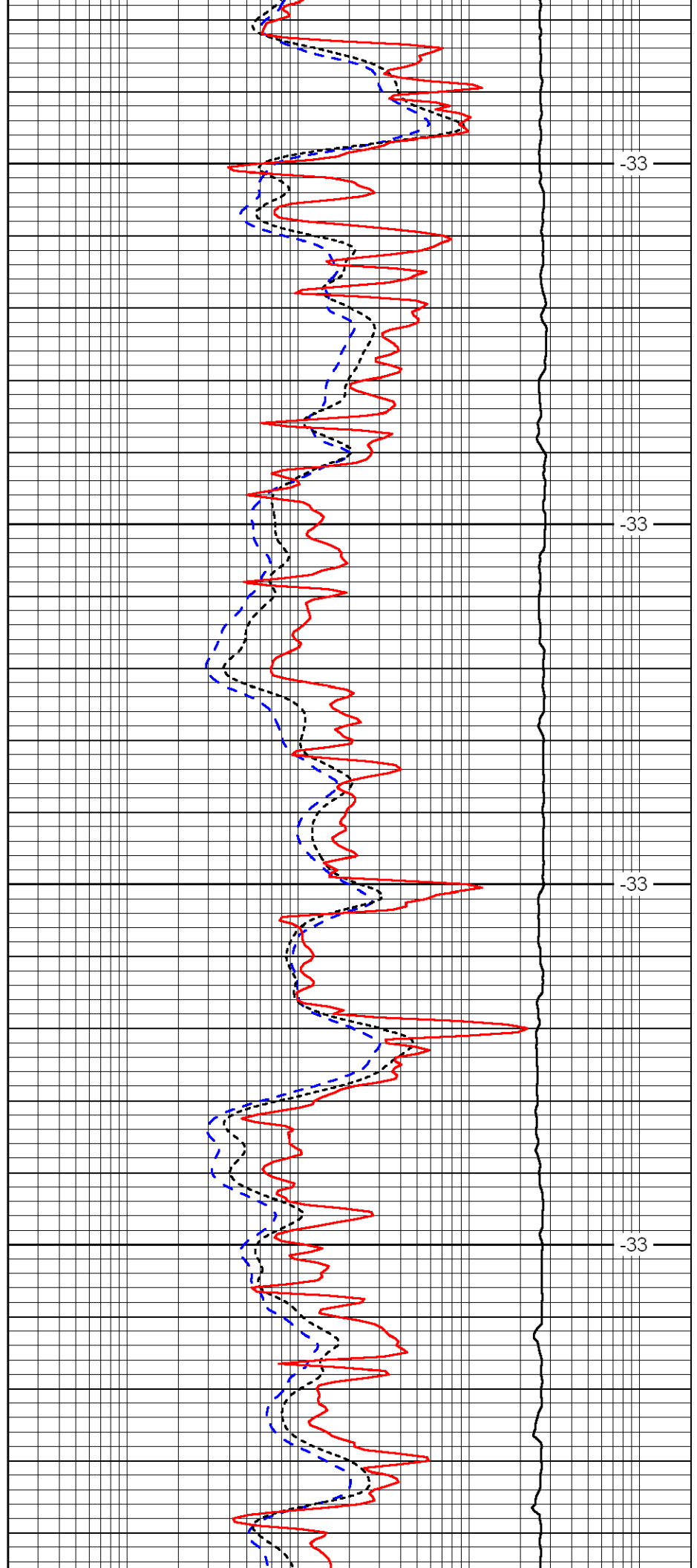


3750

3800

3850

3900

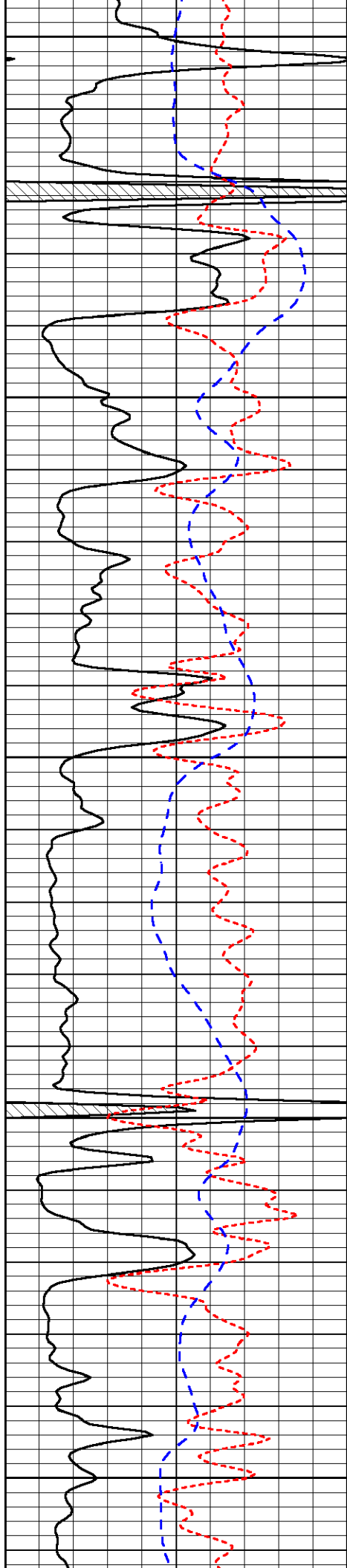


-33

-33

-33

-33



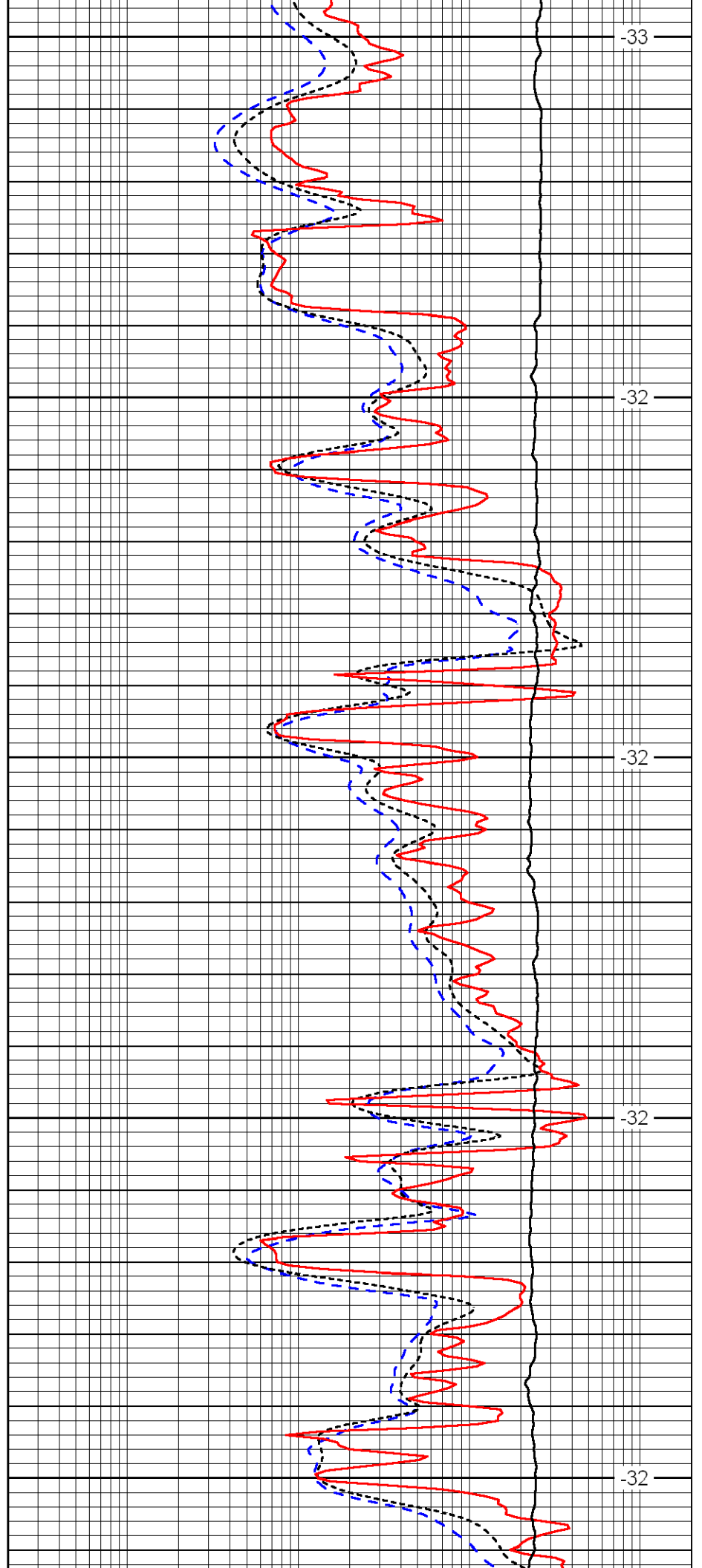
3950

4000

4050

4100

4150



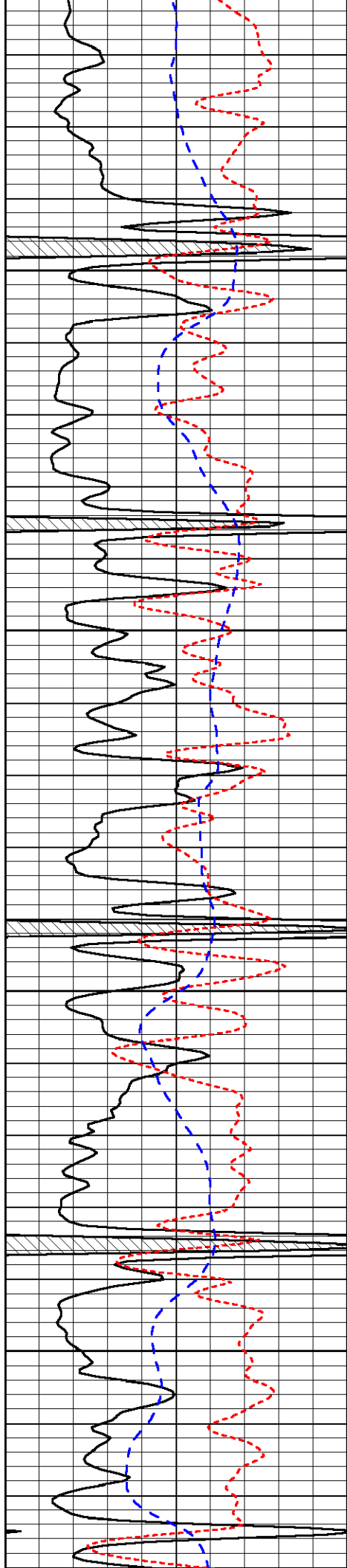
-33

-32

-32

-32

-32

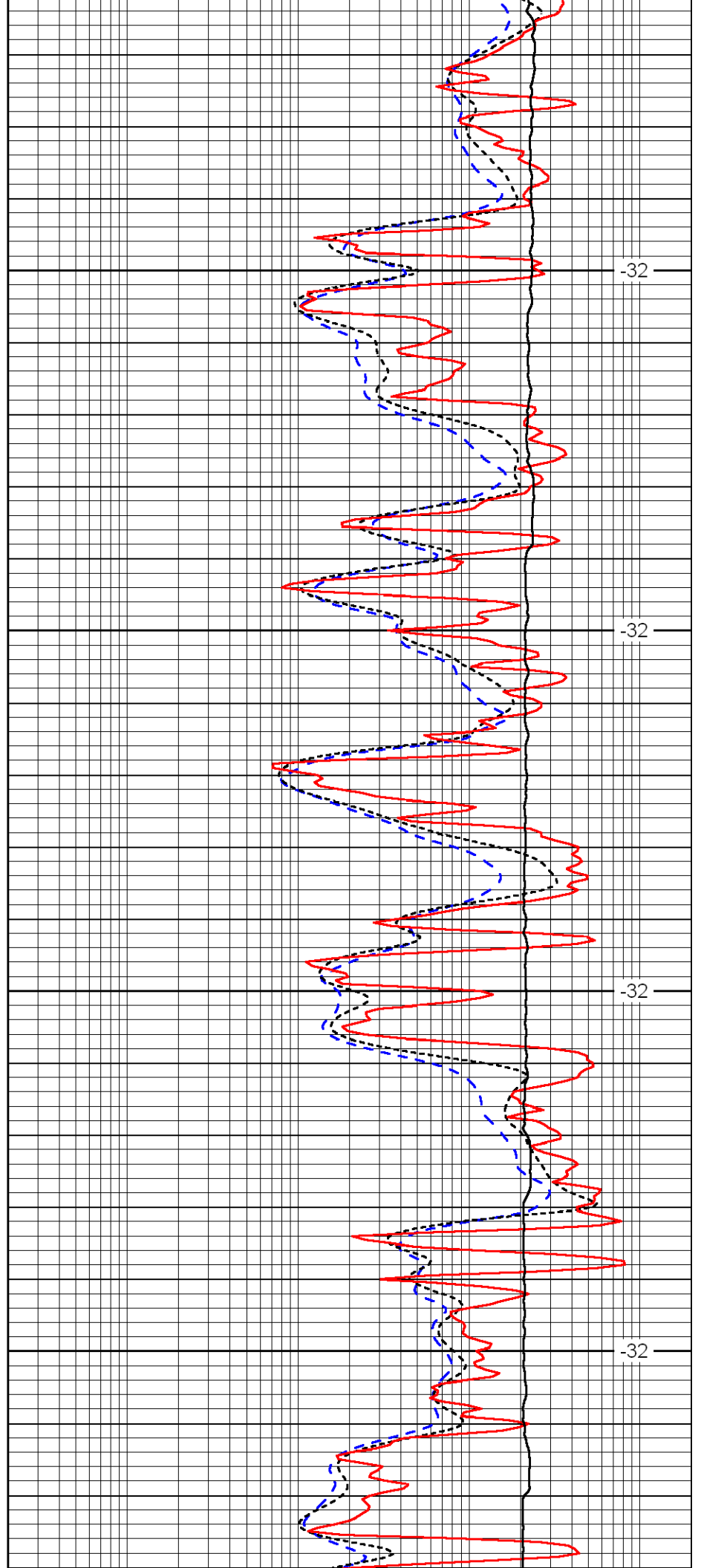


4200

4250

4300

4350

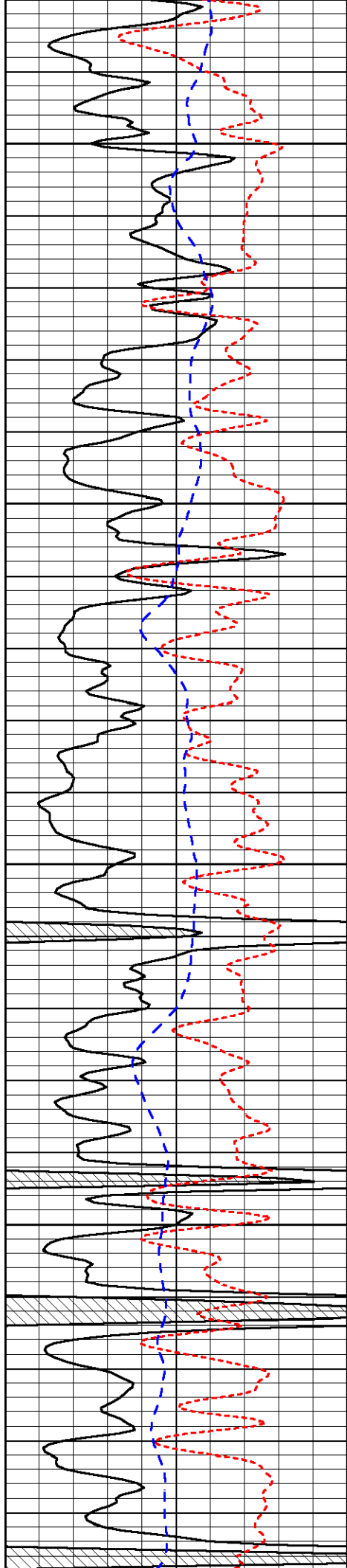


-32

-32

-32

-32

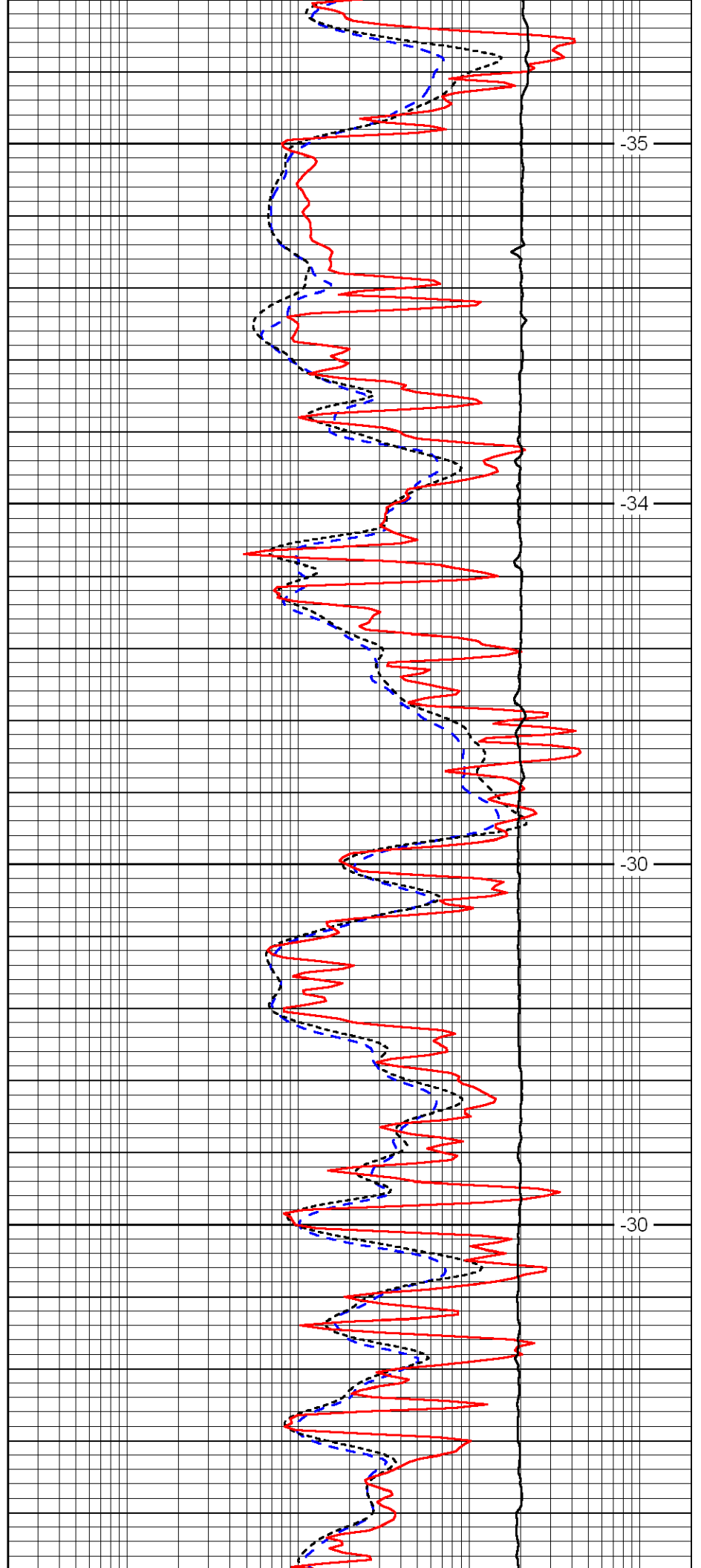


4400

4450

4500

4550

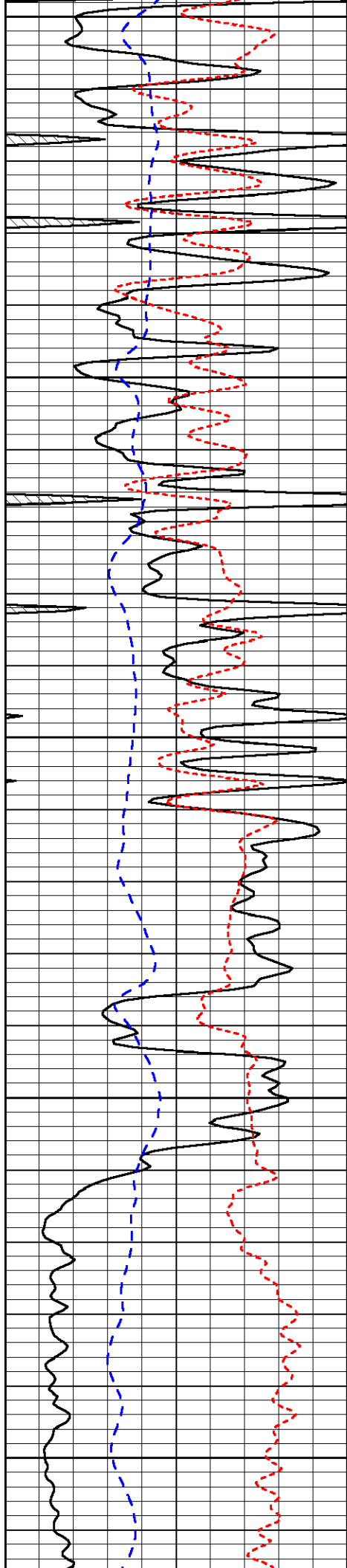


-35

-34

-30

-30



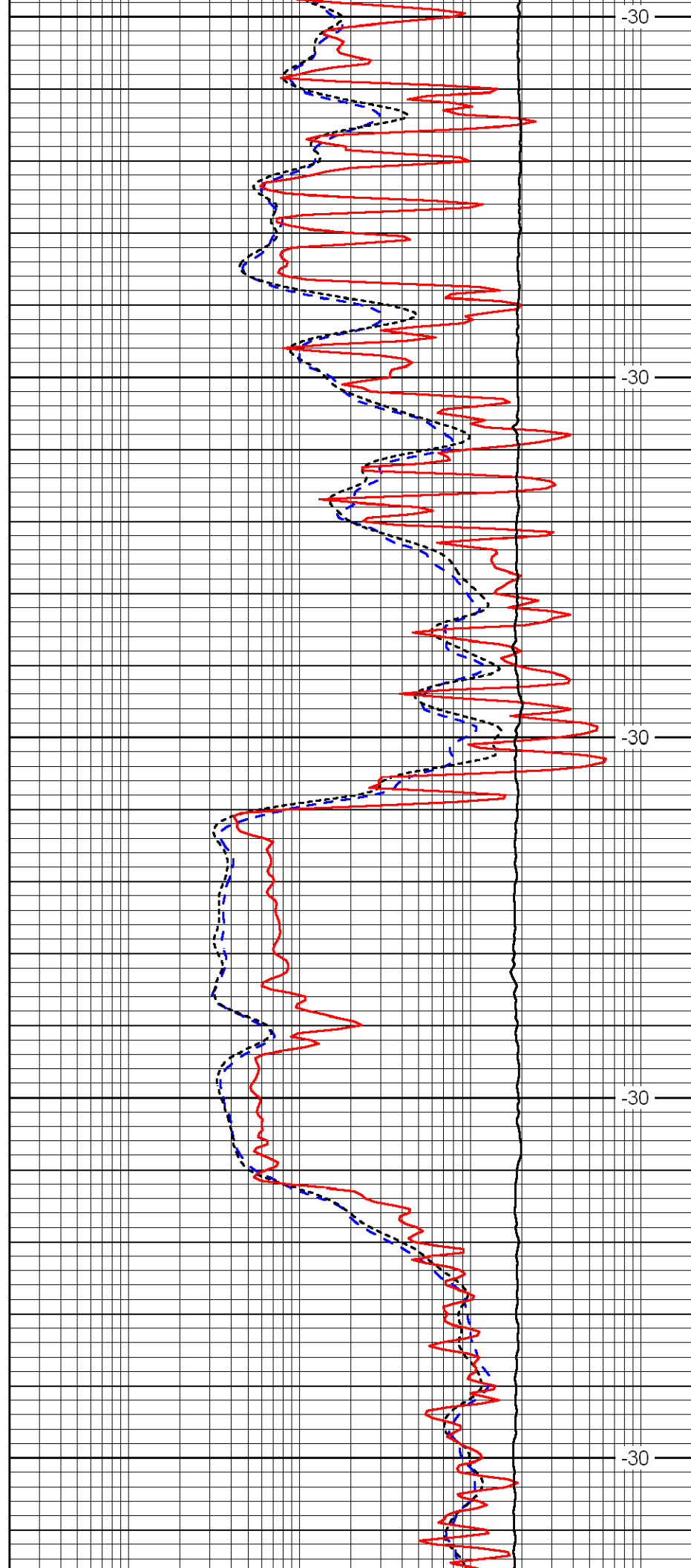
4600

4650

4700

4750

4800



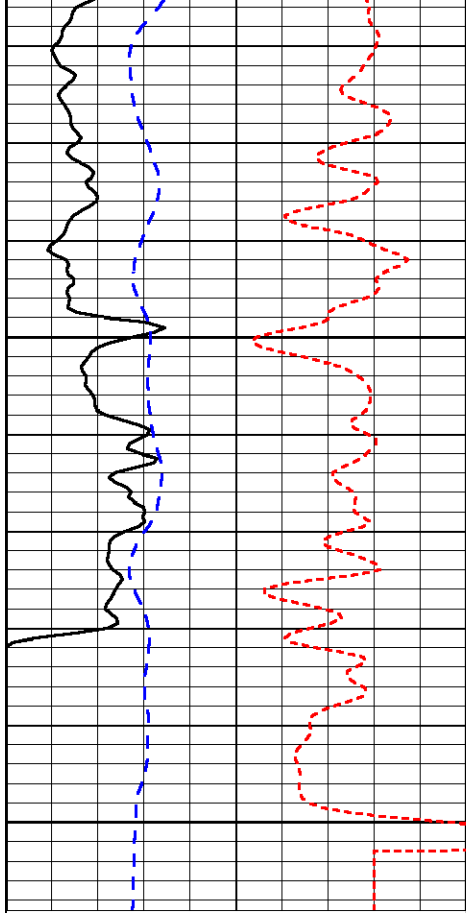
-30

-30

-30

-30

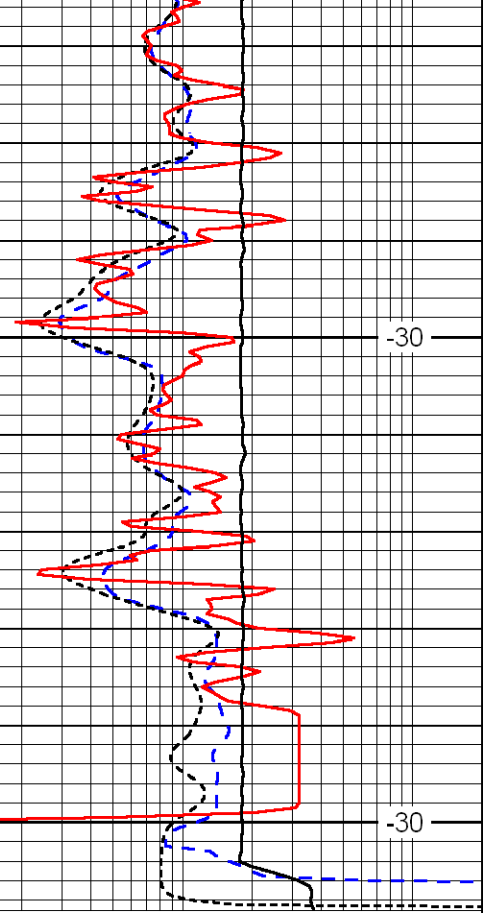
-30



0	Gamma Ray	150
-160	RXO/RT	40
-200	SP	0

4850

4900



-30

-30

0.2	Deep Resistivity	2000
0.2	Medium Resistivity	2000
0.2	Shallow Resistivity	2000
10000	Line Tension	0

LSPD