



DIGITAL LOG (785) 625-3858

Dual Compensated Porosity Log

API No. 15-171-20,886-00-00

Company **Landmark Resources, Inc.**
 Well **Frick #1-8**
 Field **Wildcat**
 County **Scott** State **Kansas**

Location **1790' FNL & 860' FWL**

Sec: **8** Twp: **17 S** Rge: **33 W**

Other Services
 DIL
 MEL/BHCS

Permanent Datum **Ground Level** Elevation **3081**
 Log Measured From **Kelly Bushing** 11 Ft. Above Perm. Datum
 Drilling Measured From **Kelly Bushing**

K.B. 3092
 D.F. G.L. 3081

Date	7/16/2012
Run Number	One
Type Log	CNL / CDL
Depth Driller	4906
Depth Logger	4904
Bottom Logged Interval	4883
Top Logged Interval	3500
Type Fluid In Hole	Chemical
Salinity, PPM CL	6000
Density	9.2
Level	Full
Max. Rec. Temp. F	125
Operating Rig Time	5 1/2 Hours
Equipment -- Location	17 Hays
Recorded By	D.Kerr
Witnessed By	Terry McLeod

Borehole Record		Casing Record				
Run No	Bit From	To	Size	Wgt. 23#	From	To
One	12.25	00	269	8.625	00	269
Two	7.875	269	TD			

<<< Fold Here >>>

All interpretations are opinions based on inferences from electrical or other measurements and we cannot and do not guarantee the accuracy or correctness of any interpretation, and we shall not, except in the case of gross or willful negligence on our part, be liable or responsible for any loss, costs, damages, or expenses incurred or sustained by anyone resulting from any interpretation made by any of our officers, agents or employees. These interpretations are also subject to our general terms and conditions set out in our current Price Schedule.

Comments

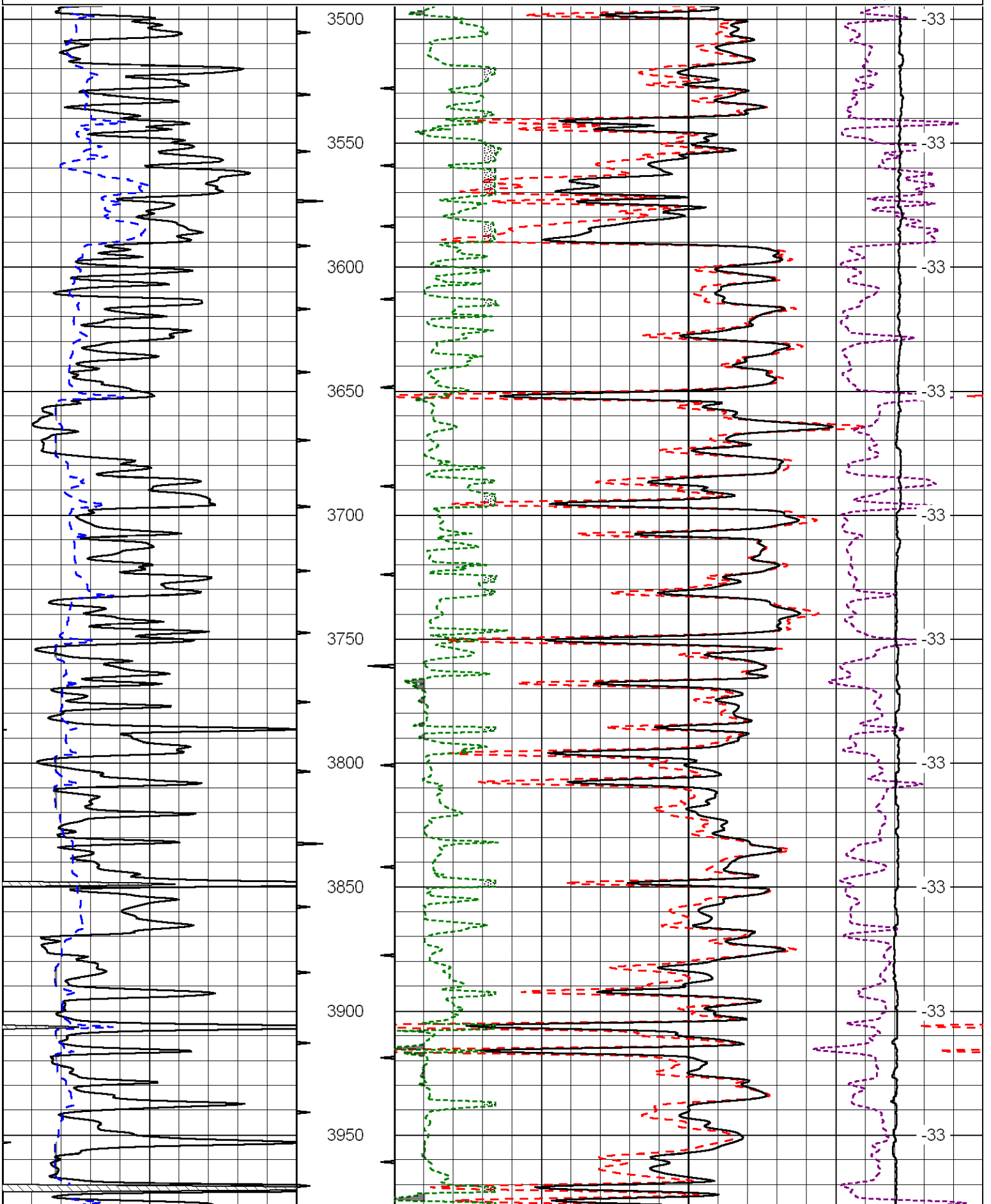
Thank you for using Log-Tech, Inc.
 (785) 625-3858

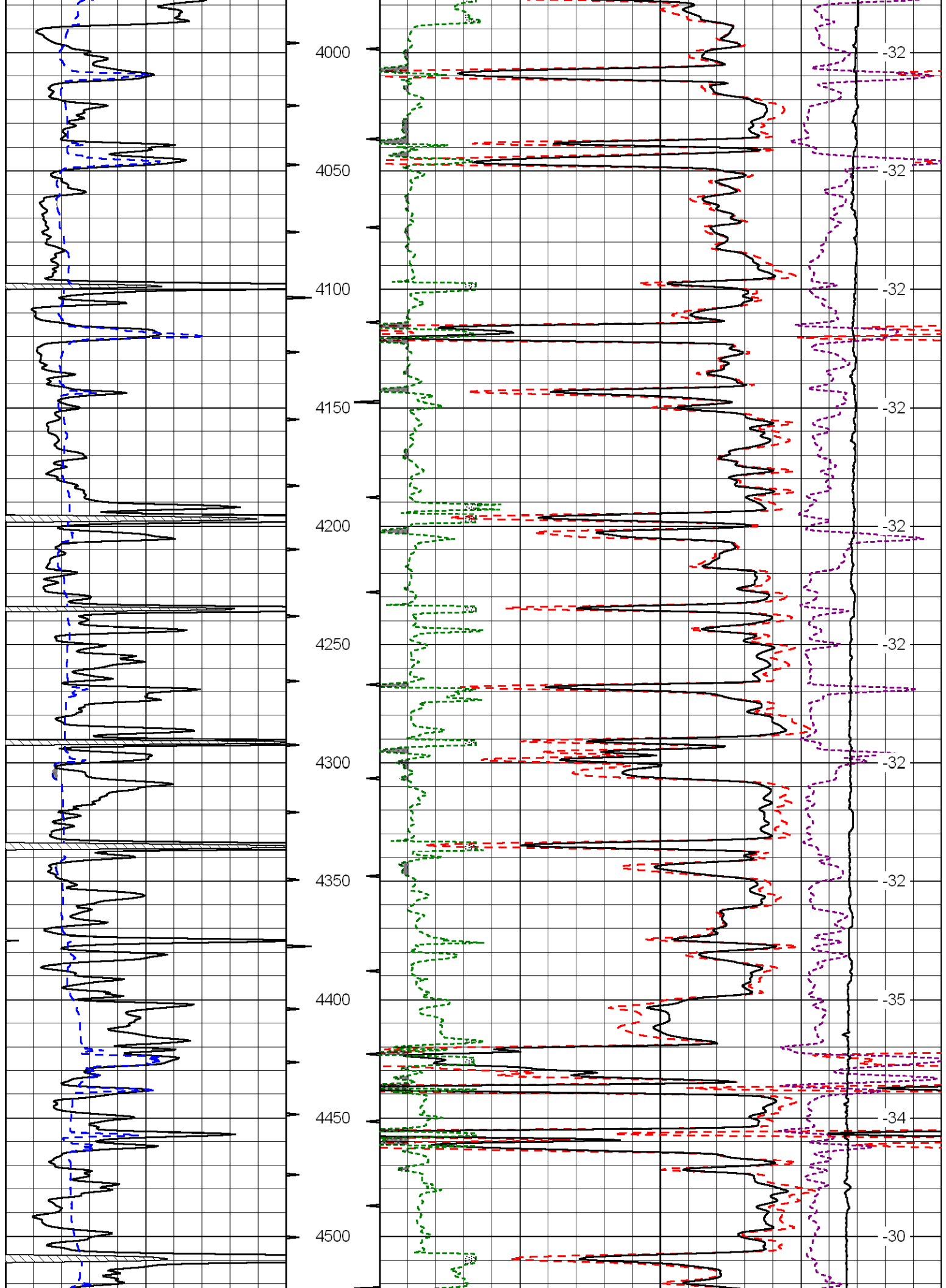
Healy KS, West to HWY 83,
 5 West, 3/4 South,
 1/4 West, North Into

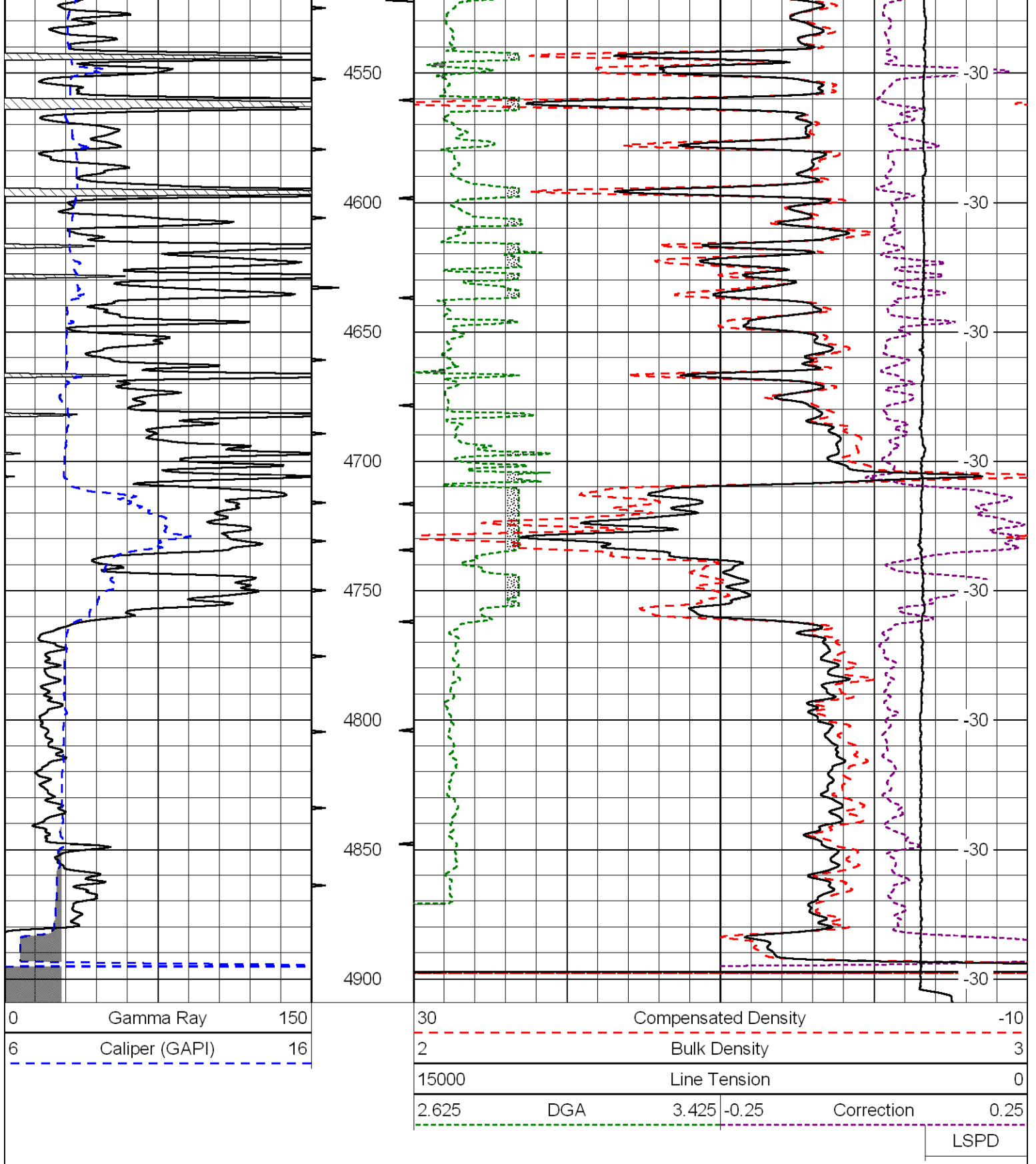
Database File: landmark_frick_1_8hd.db
 Dataset Pathname: DIL/landstk
 Presentation Format: cdl
 Dataset Creation: Mon Jul 16 22:42:17 2012
 Charted by: Depth in Feet scaled 1:600

0	Gamma Ray	150
6	Caliper (GAPI)	16

30	Compensated Density		-10
2	Bulk Density		3
15000	Line Tension		0
2.625	DGA	3.425	-0.25
Correction			0.25
LSPD			







Database File: landmark_frick_1_8hd.db
 Dataset Pathname: DIL/landstk
 Presentation Format: cndlspec
 Dataset Creation: Mon Jul 16 22:42:17 2012
 Charted by: Depth in Feet scaled 1:240

