

LOG-TECH



DIGITAL LOG (785) 625-3858

Microresistivity Log

API No. 15-171-20,886-00-00

Company **Landmark Resources, Inc.**
 Well **Frick #1-8**
 Field **Wildcat**
 County **Scott** State **Kansas**

Location **1790' FNL & 860' FWL**

Sec: **8** Twp: **17 S** Rge: **33 W**

Other Services
 CNL/CDL
 DIL/BHCS

Permanent Datum	Ground Level	Elevation 3081
Log Measured From	Kelly Bushing	11 Ft. Above Perm. Datum
Drilling Measured From	Kelly Bushing	K.B. 3092 D.F. 3081 G.L. 3081
Date	7/16/2012	
Run Number	Two	
Depth Driller	4906	
Depth Logger	4904	
Bottom Logged Interval	4903	
Top Log Interval	3500	
Casing Driller	8.625 @ 269	
Casing Logger	261	
Bit Size	7.875	
Type Fluid in Hole	Chemical	
Salinity, ppm CL	6000	
Density / Viscosity	9.2	57
pH / Fluid Loss	10.0	10.2
Source of Sample	Flowline	
Rm @ Meas. Temp	.55 @ 86	
Rmf @ Meas. Temp	.41 @ 86	
Rmc @ Meas. Temp	.74 @ 86	
Source of Rmf / Rmc	Charts	
Rm @ BHT	.38 @ 125	
Operating Rig Time	5 1/2 Hours	
Max Rec. Temp. F	125	
Equipment Number	17	
Location	Hays	
Recorded By	D.Kerr	
Witnessed By	Terry McLeod	

<<< Fold Here >>>

All interpretations are opinions based on inferences from electrical or other measurements and we cannot and do not guarantee the accuracy or correctness of any interpretation, and we shall not, except in the case of gross or willful negligence on our part, be liable or responsible for any loss, costs, damages, or expenses incurred or sustained by anyone resulting from any interpretation made by any of our officers, agents or employees. These interpretations are also subject to our general terms and conditions set out in our current Price Schedule.

Comments

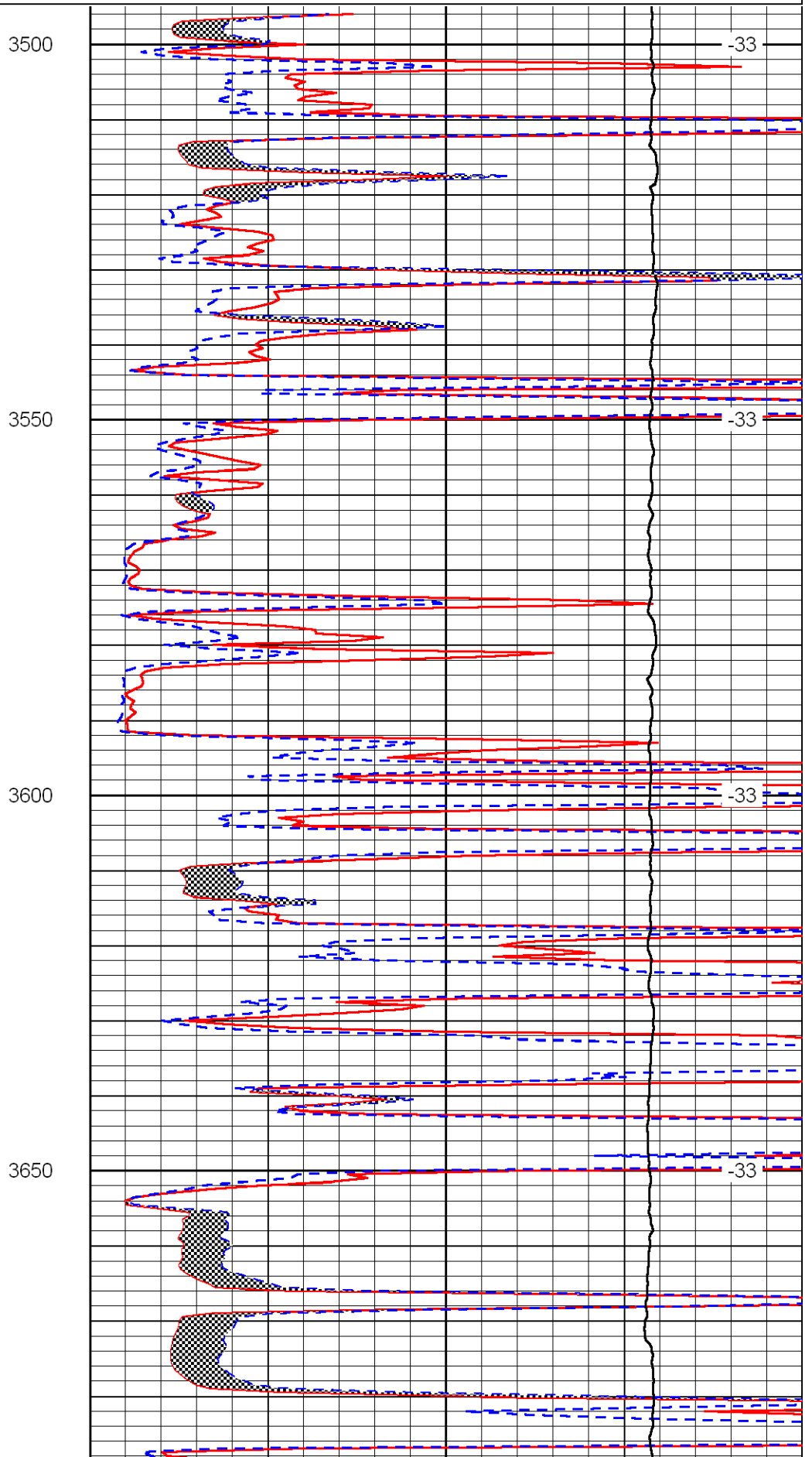
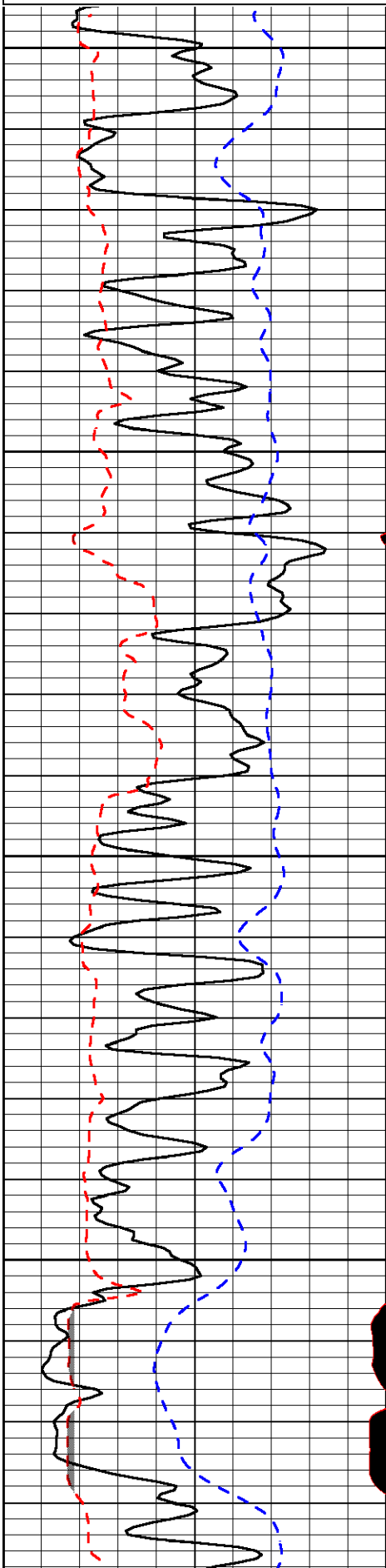
Thank you for using Log-Tech, Inc.
 (785) 625-3858

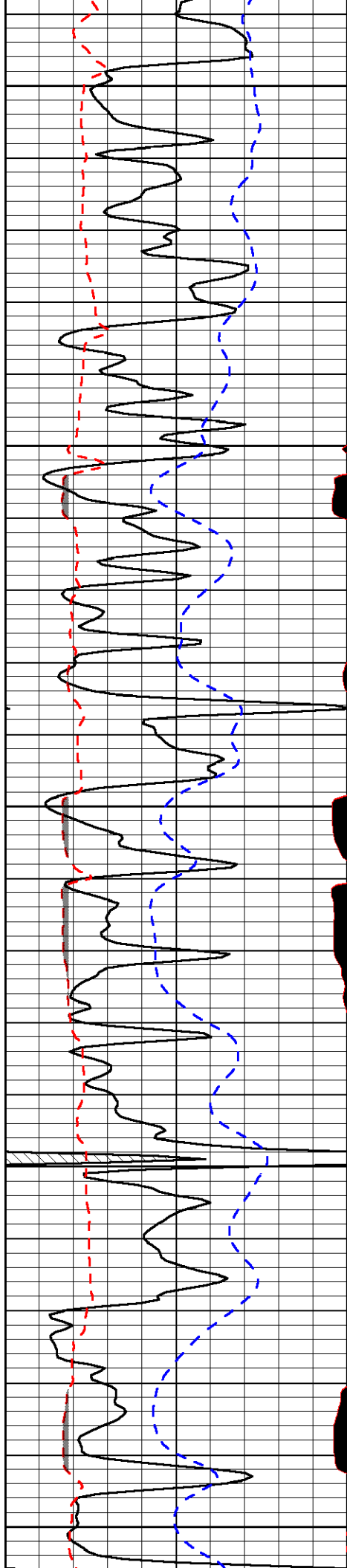
Healy KS, West to HWY 83,
 5 West, 3/4 South,
 1/4 West, North Into

Database File: landmark_frick_1_8hd.db
 Dataset Pathname: DIL/landstk
 Presentation Format: micro
 Dataset Creation: Mon Jul 16 22:42:17 2012
 Charted by: Depth in Feet scaled 1:240

0	Gamma Ray	150
6	MCAL (GAPI)	16
2.875	Mud Cake (GAPI)	7.875
-200	SP	0

0	Micro Inverse 1 X 1	40
0	Micro Normal 2"	40
10000	Line Weight	0
		LSPD





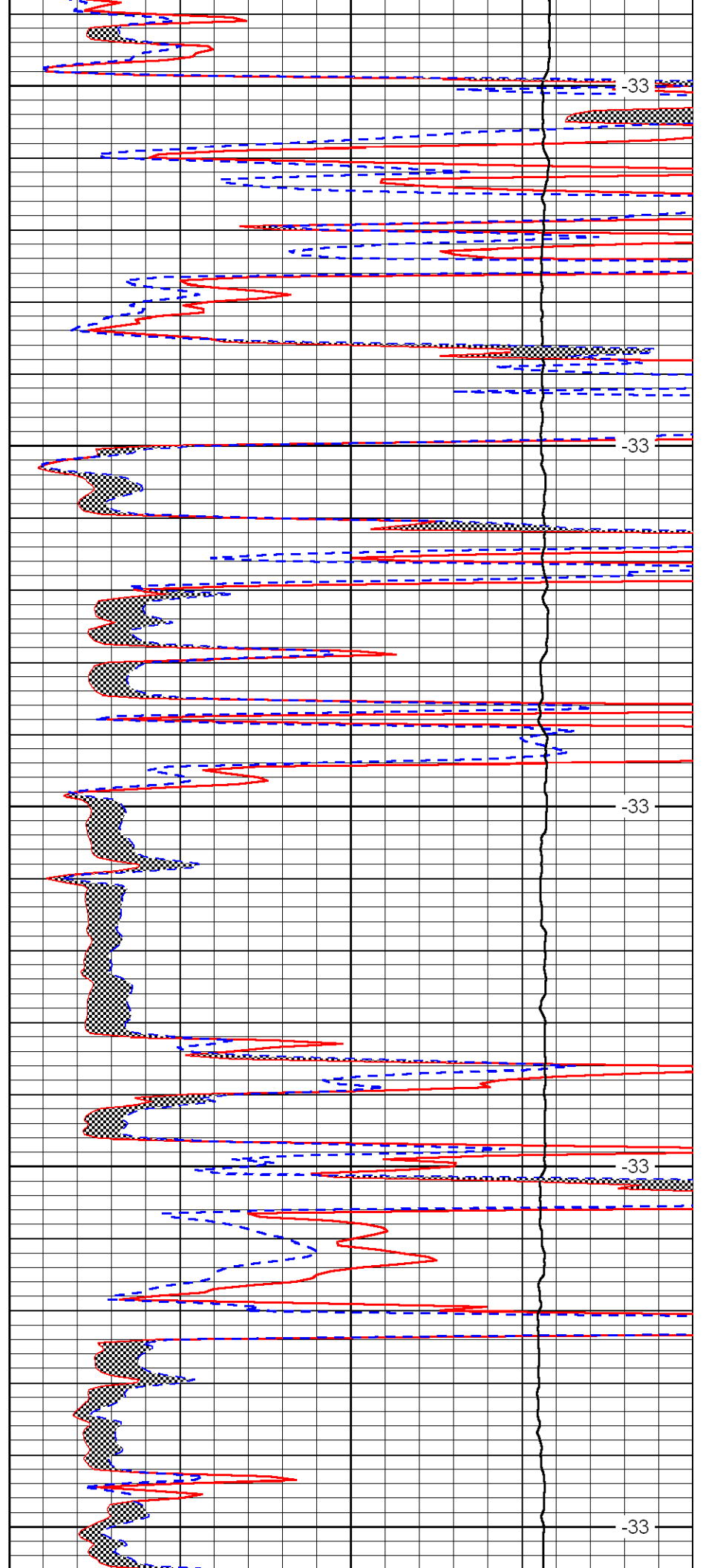
3700

3750

3800

3850

3900



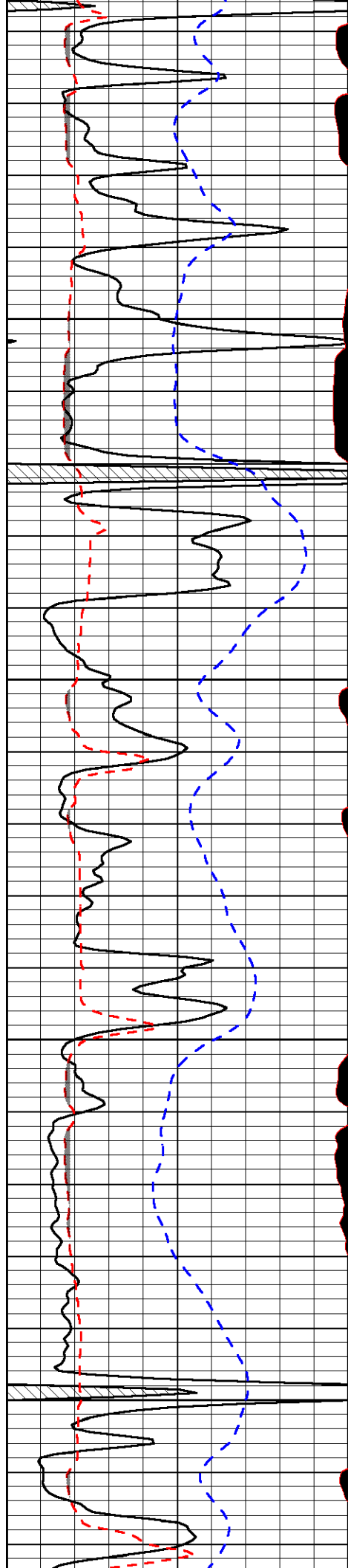
-33

-33

-33

-33

-33

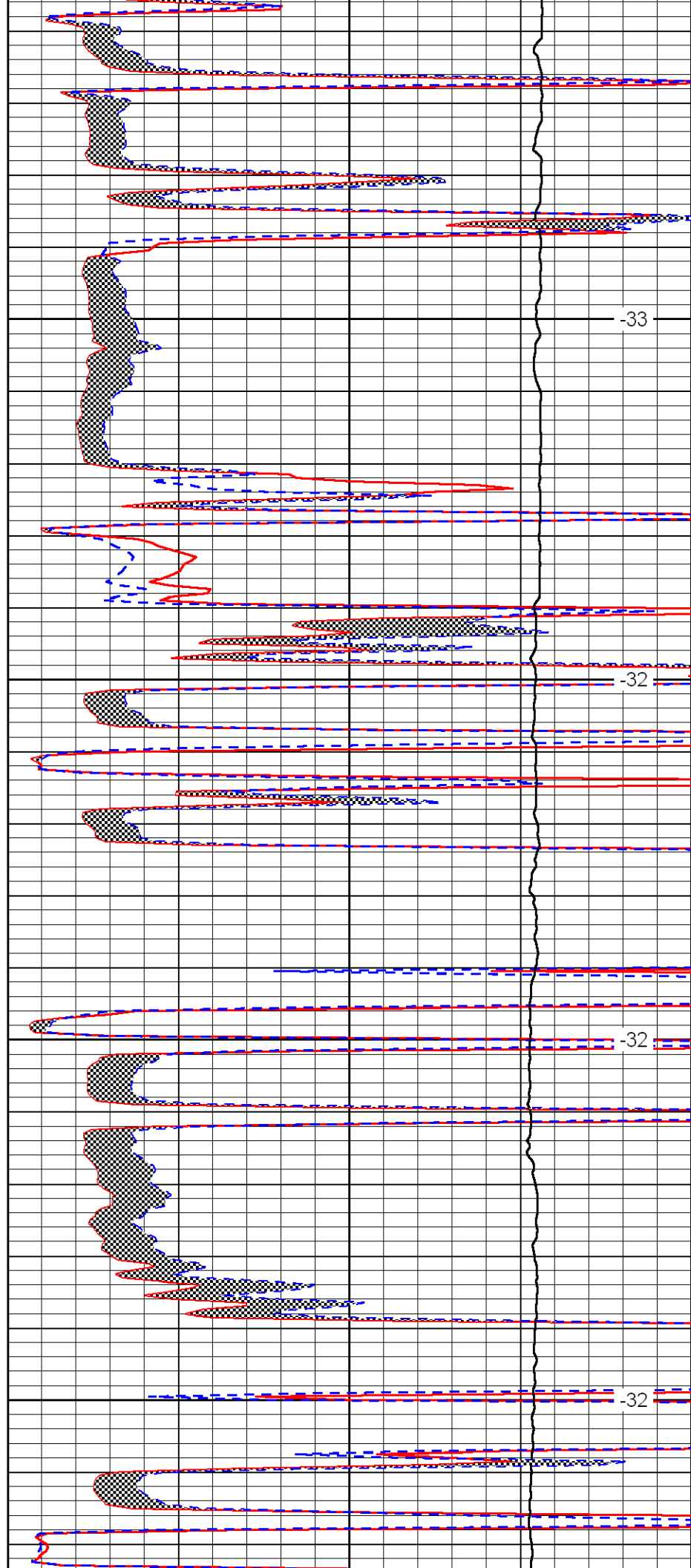


3950

4000

4050

4100

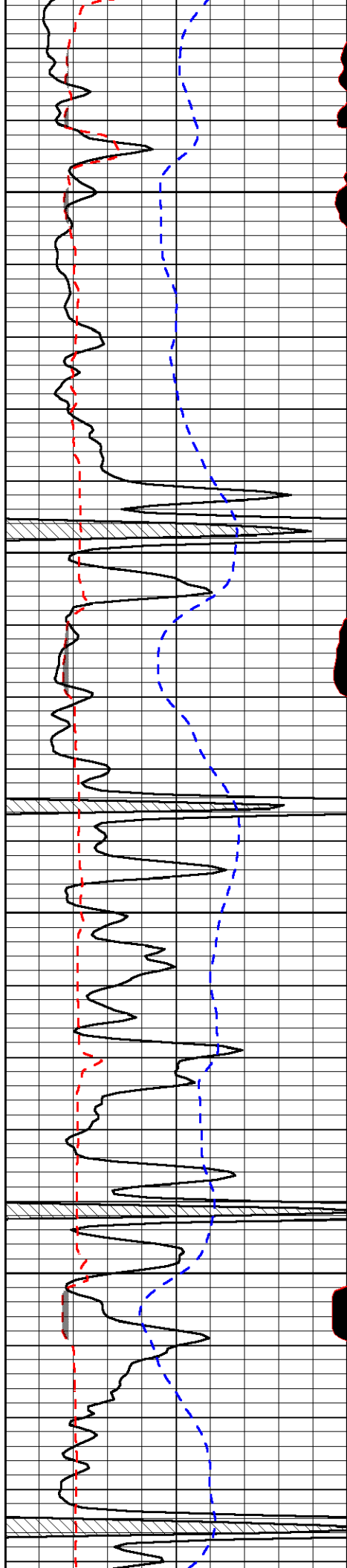


-33

-32

-32

-32

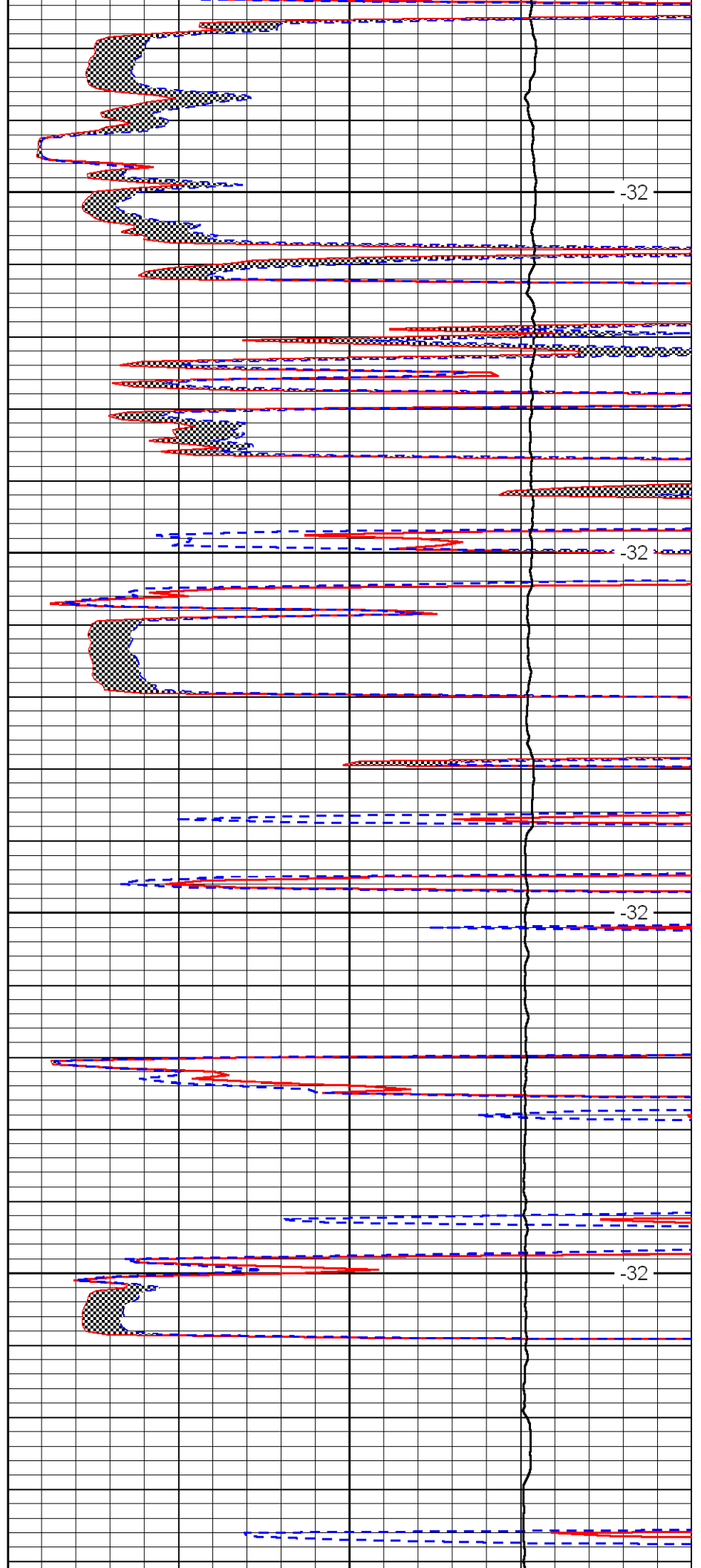


4150

4200

4250

4300

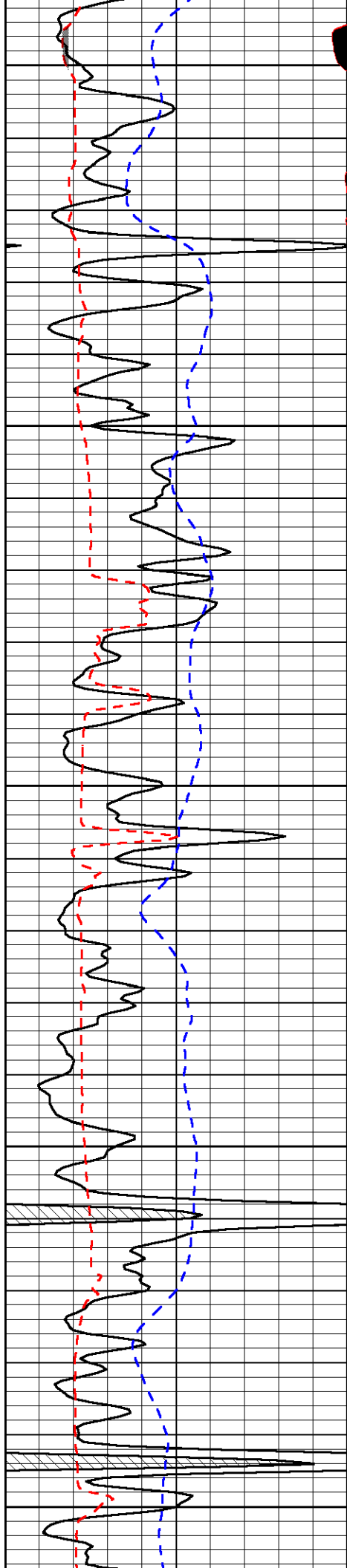


-32

-32

-32

-32



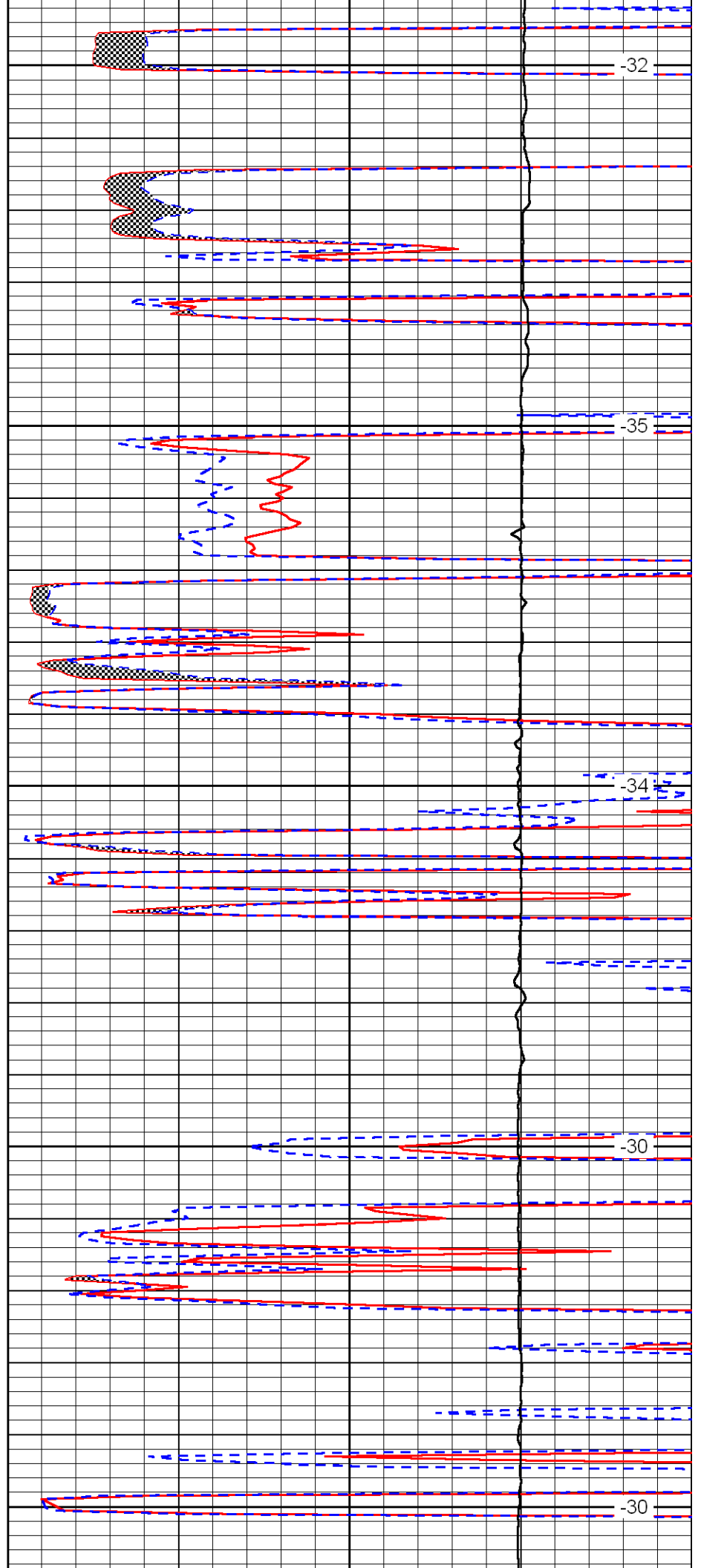
4350

4400

4450

4500

4550



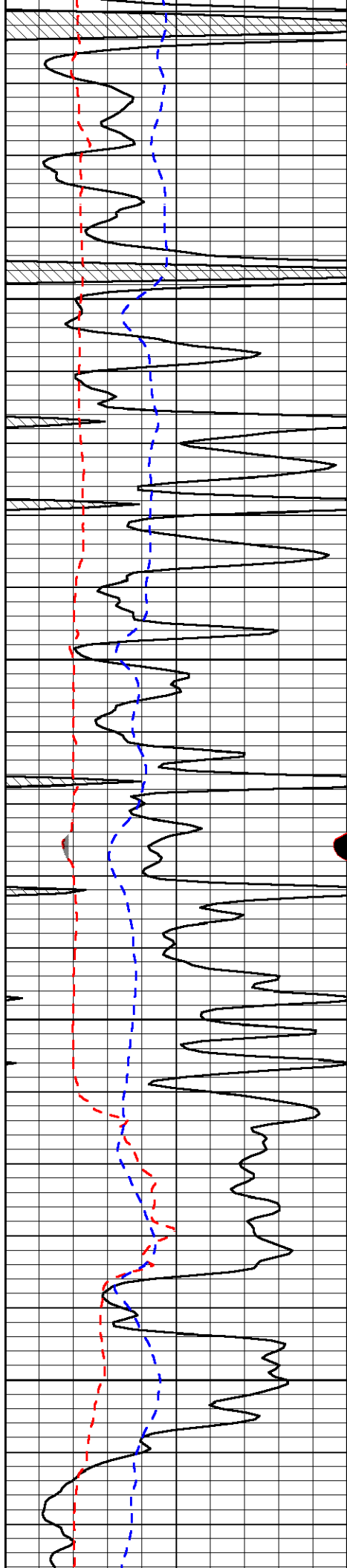
-32

-35

-34

-30

-30

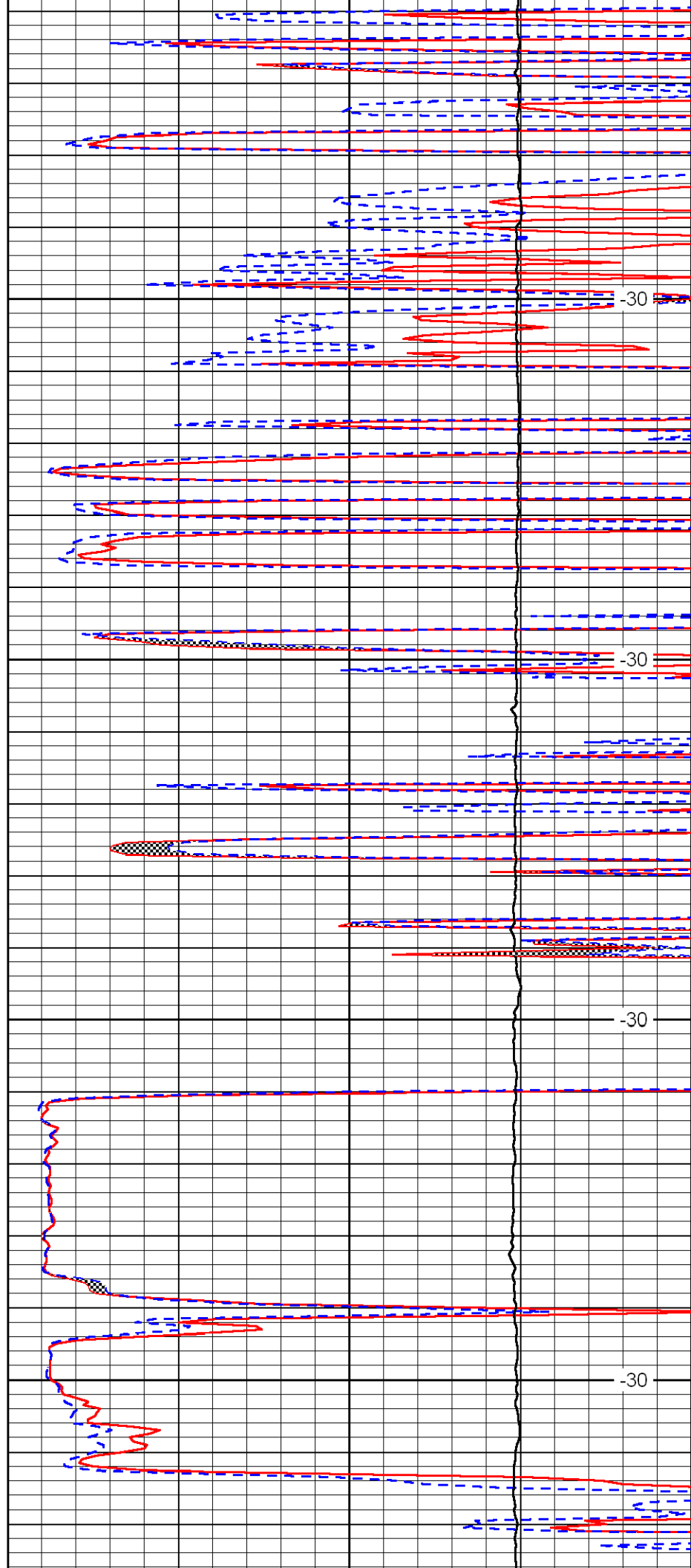


4600

4650

4700

4750

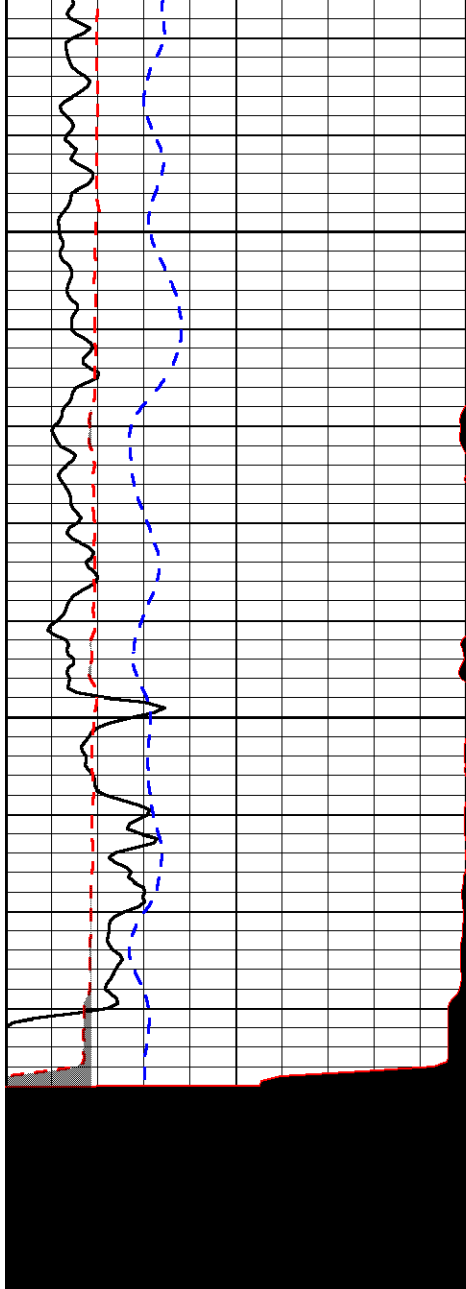


-30

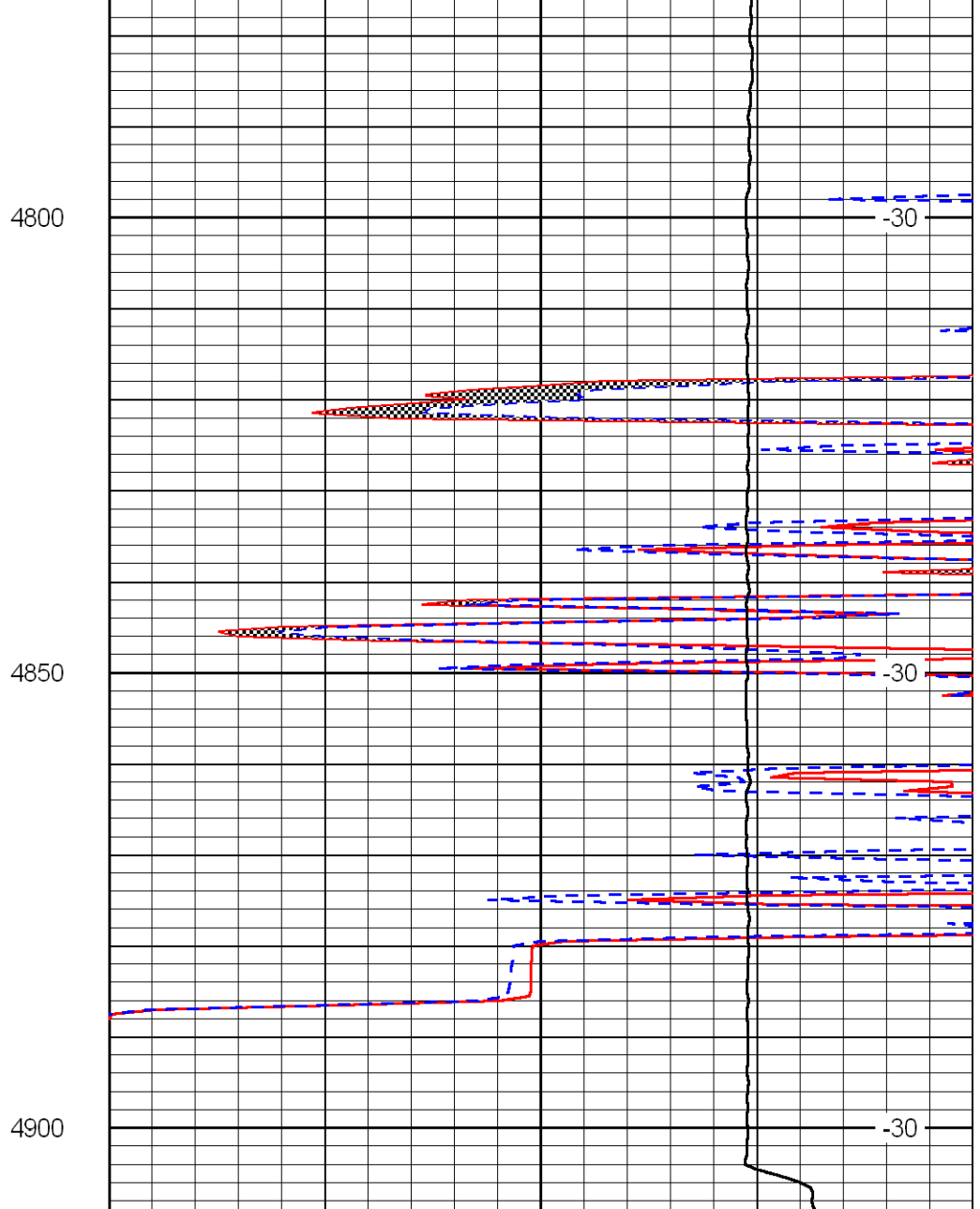
-30

-30

-30



0	Gamma Ray	150
6	MCAL (GAPI)	16
2.875	Mud Cake (GAPI)	7.875
-200	SP	0



0	Micro Inverse 1 X 1	40
0	Micro Normal 2''	40
10000	Line Weight	0

LSPD