



DIGITAL LOG (785) 625-3858

Borehole Compensated
Sonic Log

API No. 15-171-20,886-00-00

Company **Landmark Resources, Inc.**
Well **Frick #1-8**
Field **Wildcat**
County **Scott** State **Kansas**

Location **1790' FNL & 860' FWL**

Sec: **8** Twp: **17 S** Rge: **33 W**

Other Services
CNL/CDL
MEL/DIL

Permanent Datum **Ground Level** Elevation **3081**
Log Measured From **Kelly Bushing** 11 Ft. Above Perm. Datum
Drilling Measured From **Kelly Bushing**

Elevation
K.B. 3092
D.F. 3081
G.L. 3081

Date **7/16/2012**

Run Number **Two**

Type Log **BHC Sonic**

Depth Driller **4906**

Depth Logger **4904**

Bottom Logged Interval **4893**

Top Logged Interval **250**

Type Fluid In Hole **Chemical**

Salinity, PPM CL **6000**

Density **9.2**

Level **Full**

Max. Rec. Temp. F **125**

Operating Rig Time **5 1/2 Hours**

Equipment -- Location **17 Hays**

Recorded By **D.Kerr**

Witnessed By **Terry McLeod**

Borehole Record		Casing Record				
Run No	Bit From	To	Size	Wgt.	From	To
One	12.25	00	269	8.625	23#	00
Two	7.875	269	TD			269

<<< Fold Here >>>

All interpretations are opinions based on inferences from electrical or other measurements and we cannot and do not guarantee the accuracy or correctness of any interpretation, and we shall not, except in the case of gross or willful negligence on our part, be liable or responsible for any loss, costs, damages, or expenses incurred or sustained by anyone resulting from any interpretation made by any of our officers, agents or employees. These interpretations are also subject to our general terms and conditions set out in our current Price Schedule.

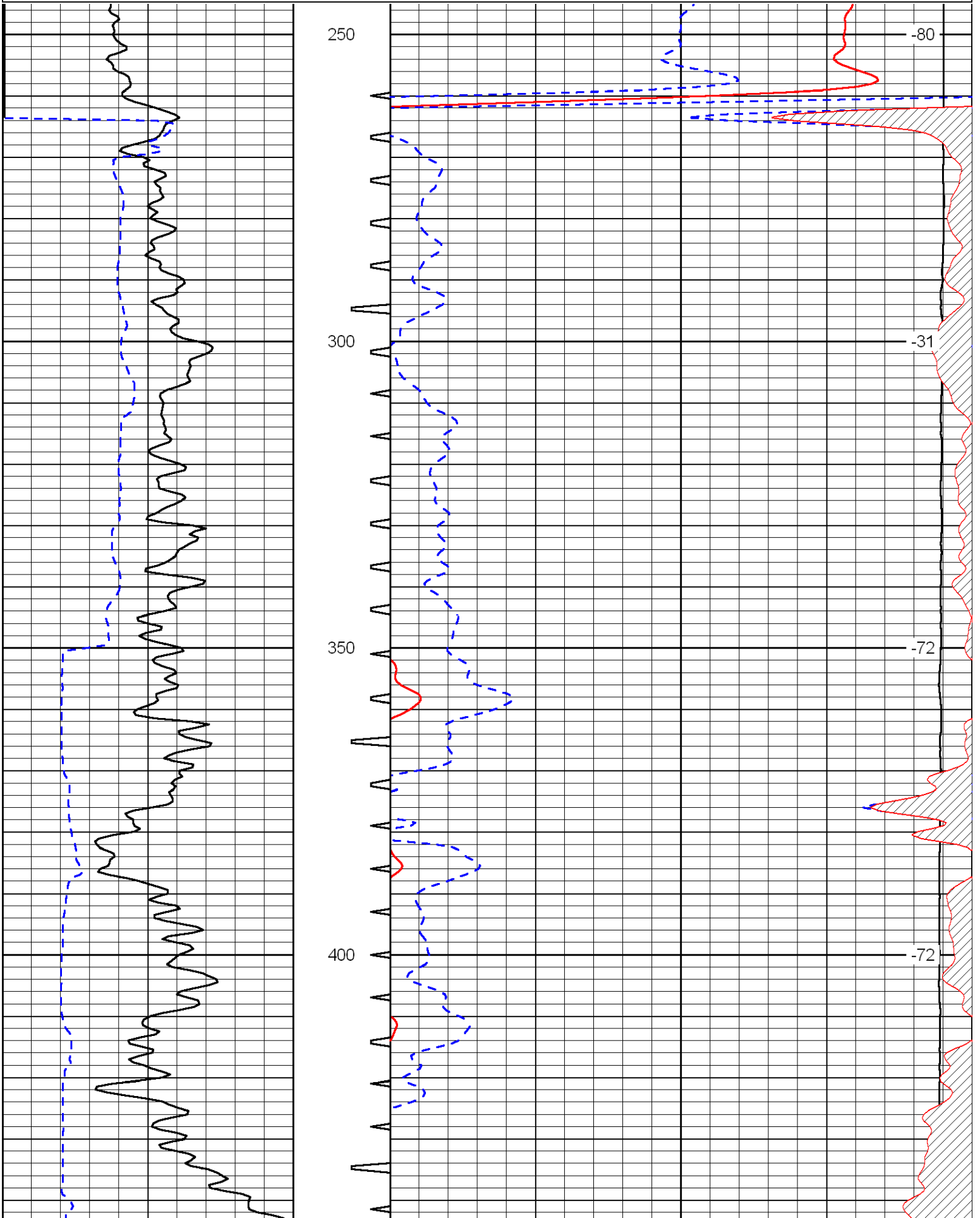
Comments

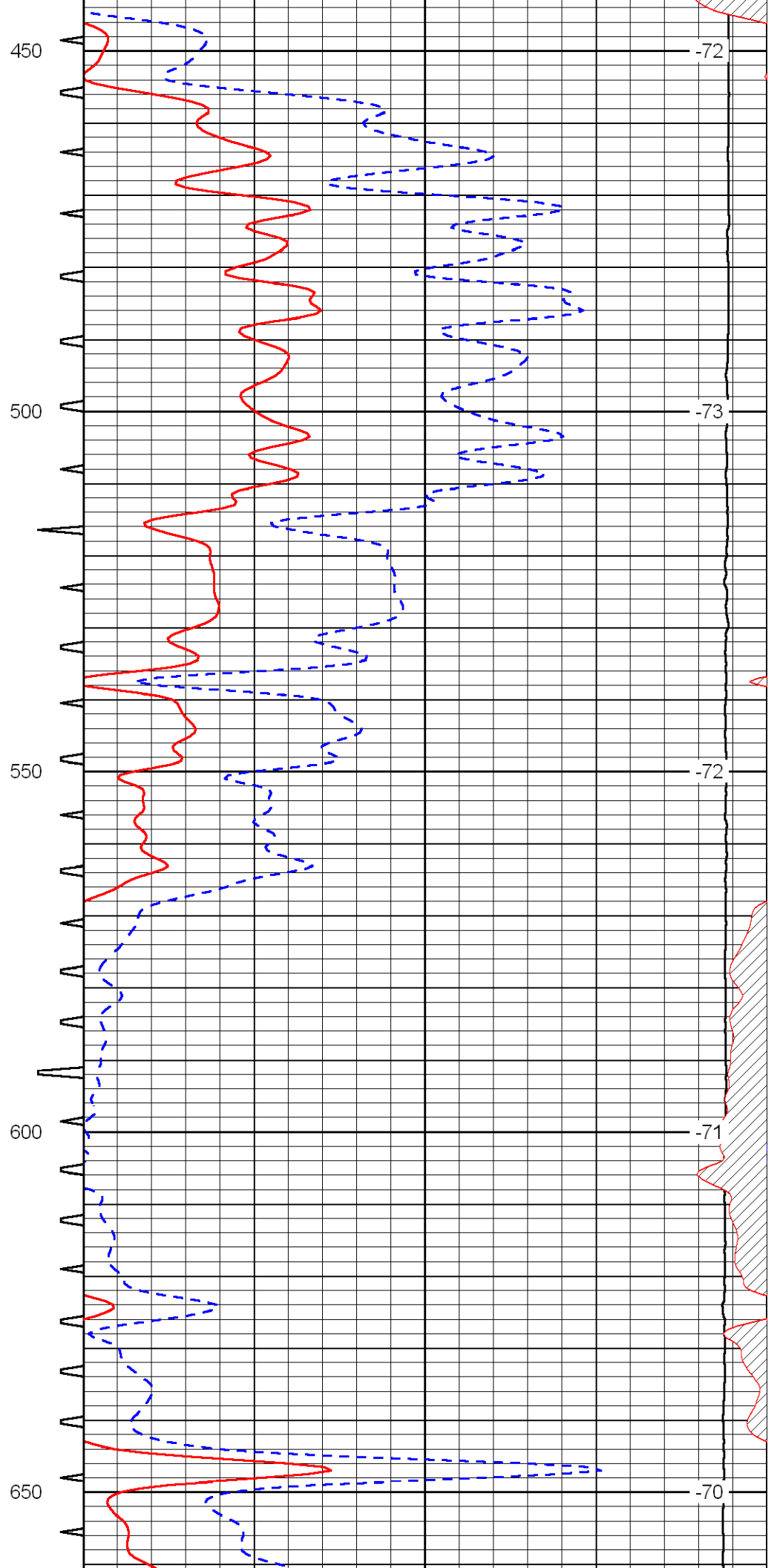
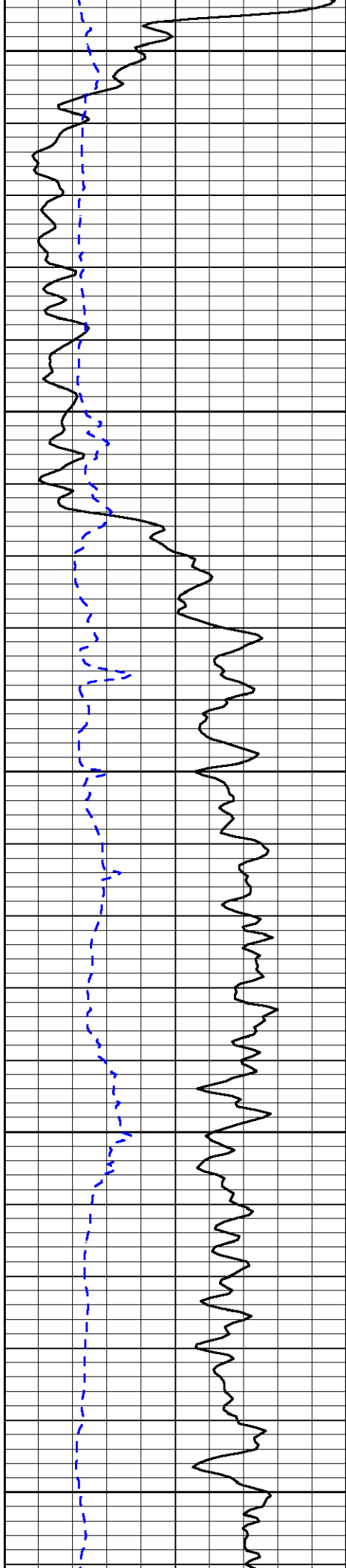
Thank you for using Log-Tech, Inc.
(785) 625-3858

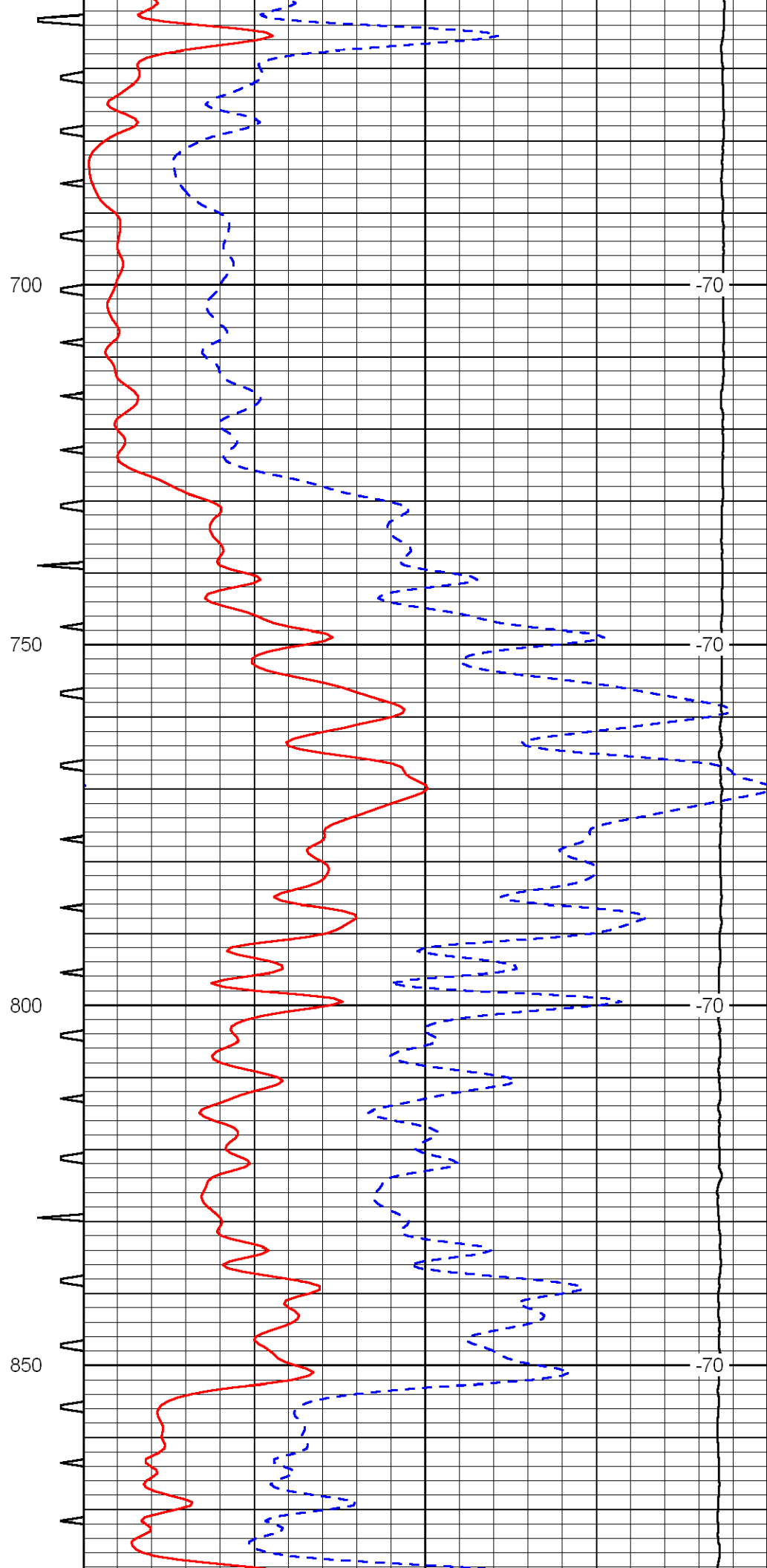
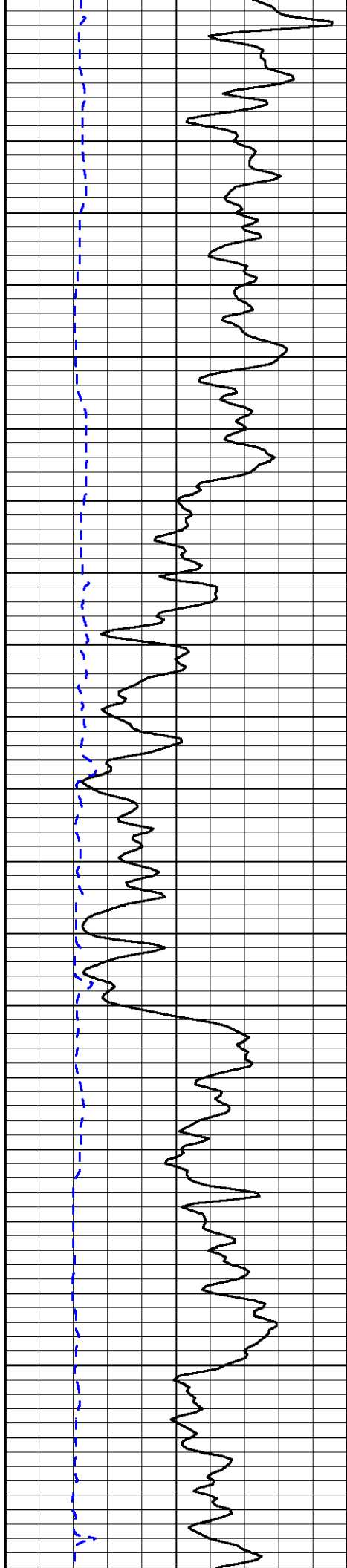
Healy KS, West to HWY 83,
5 West, 3/4 South,
1/4 West, North Into

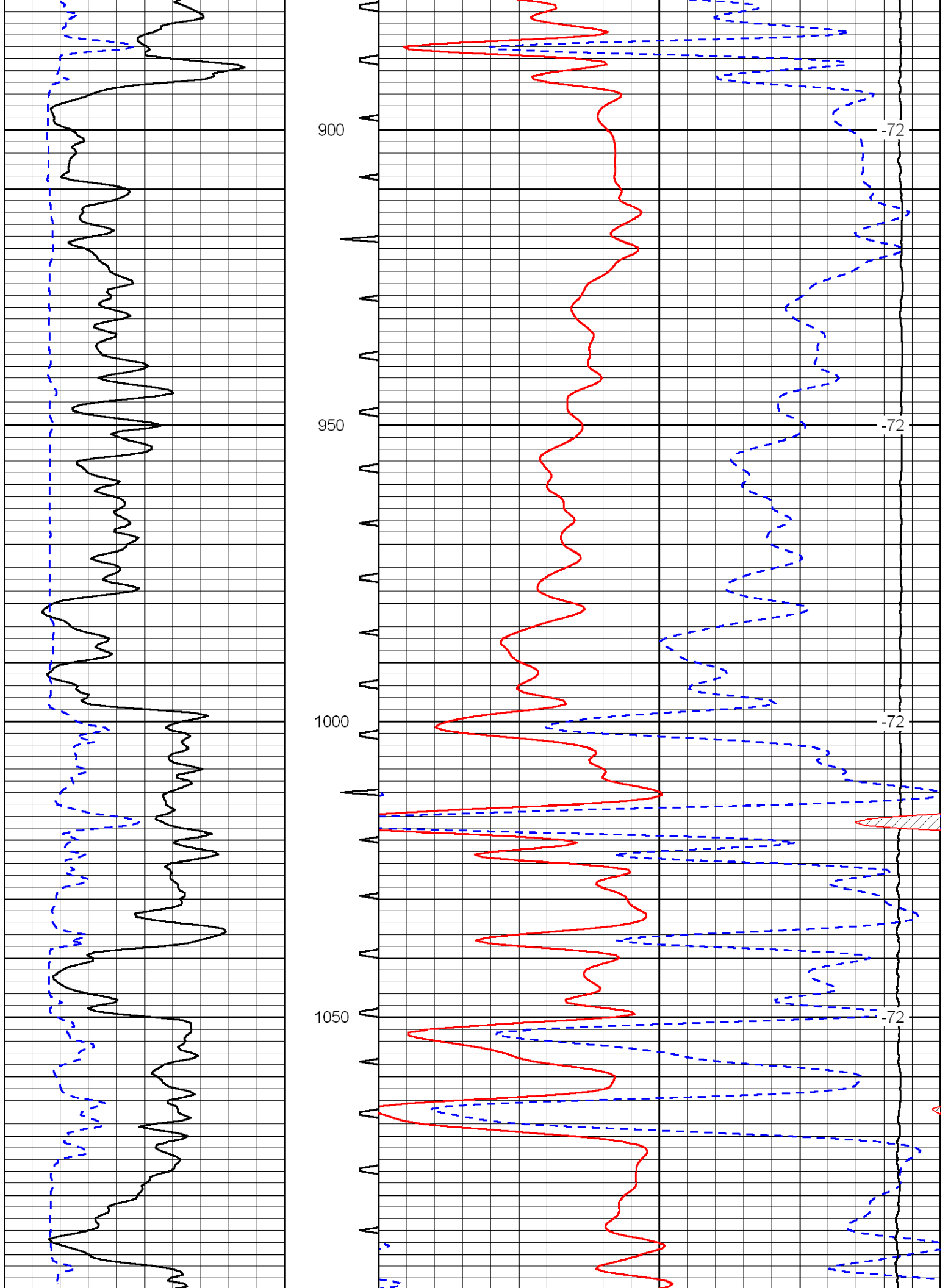
Database File: landmark_frick_1_8hd.db
Dataset Pathname: DIL/landstk
Presentation Format: sonic
Dataset Creation: Mon Jul 16 22:42:17 2012
Charted by: Depth in Feet scaled 1:240

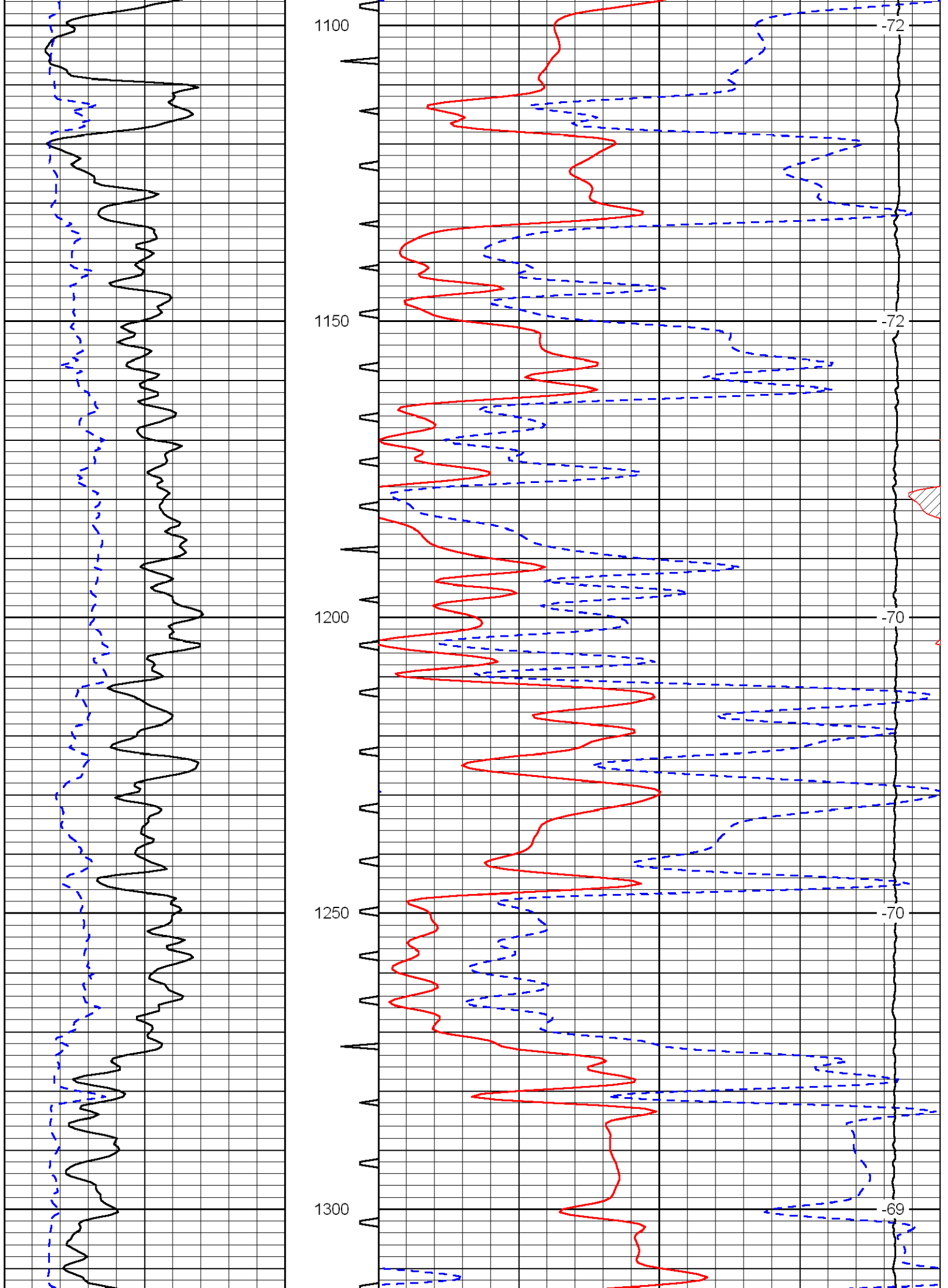
0	Gamma Ray	150	Sonic Int	140	Delta Time (usec/ft)	40
150	Gamma Ray	300	5	0	Sonic Porosity	-10
6	dCAL (GAPI)	16		15000	LTEN (lb)	0
						LSPD

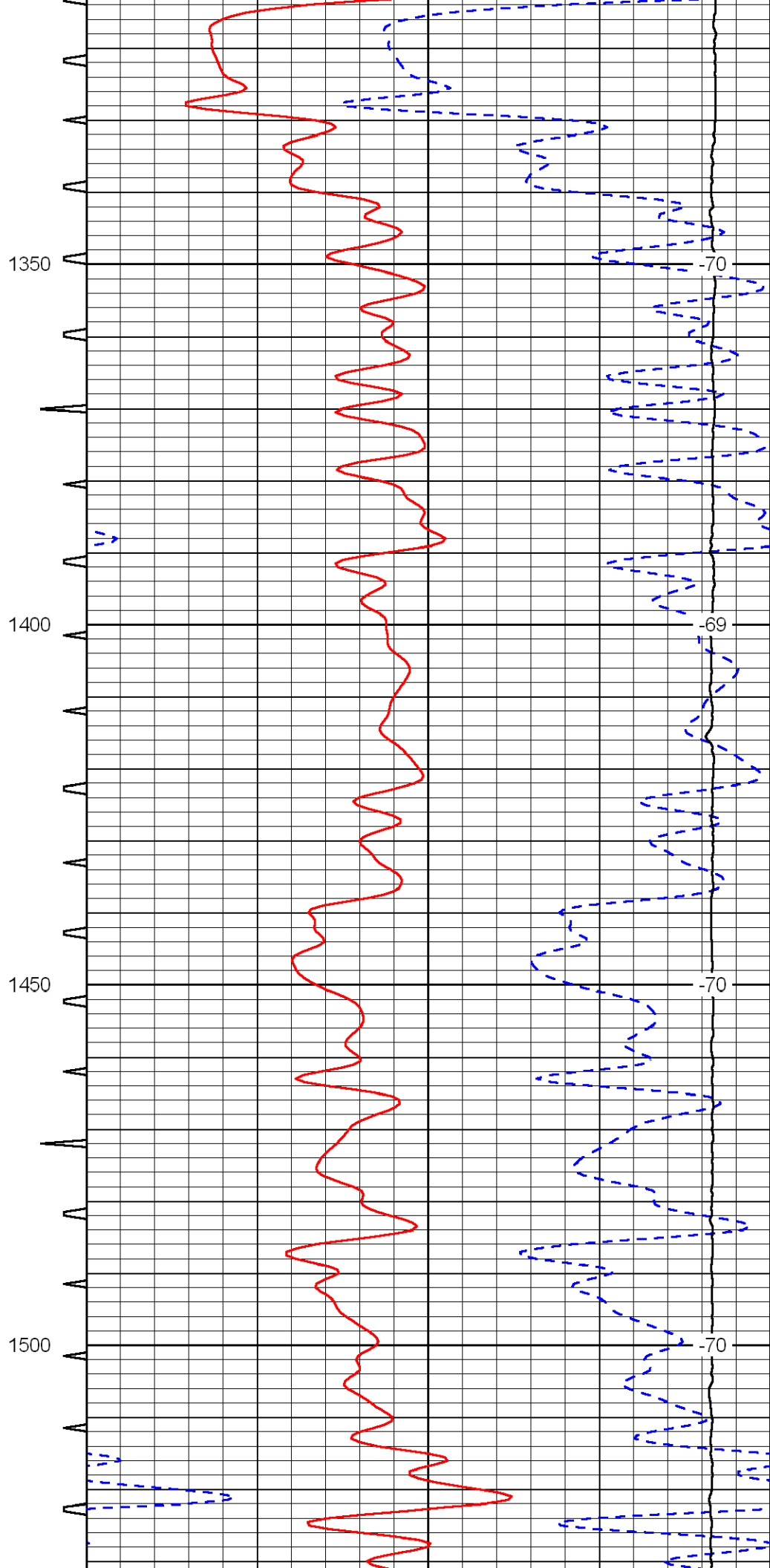
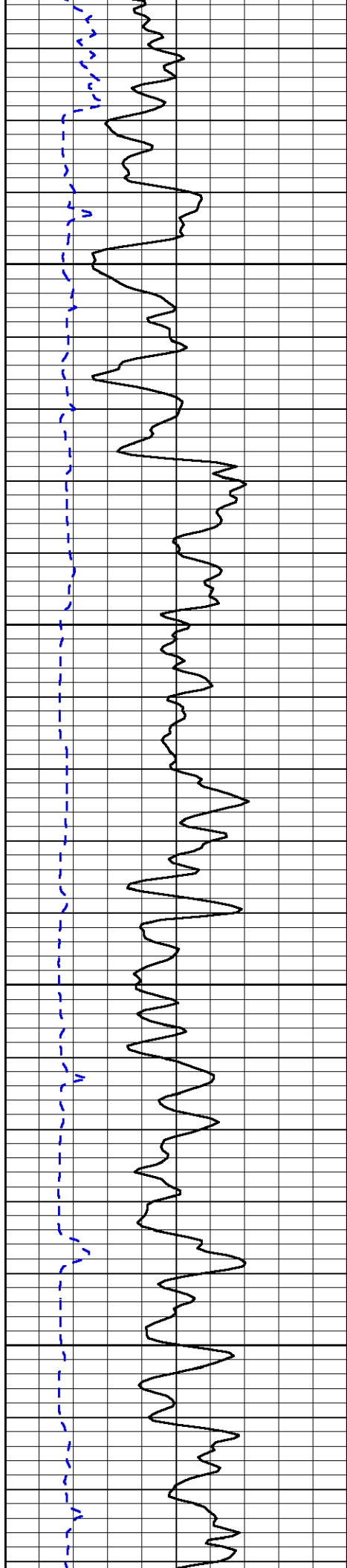


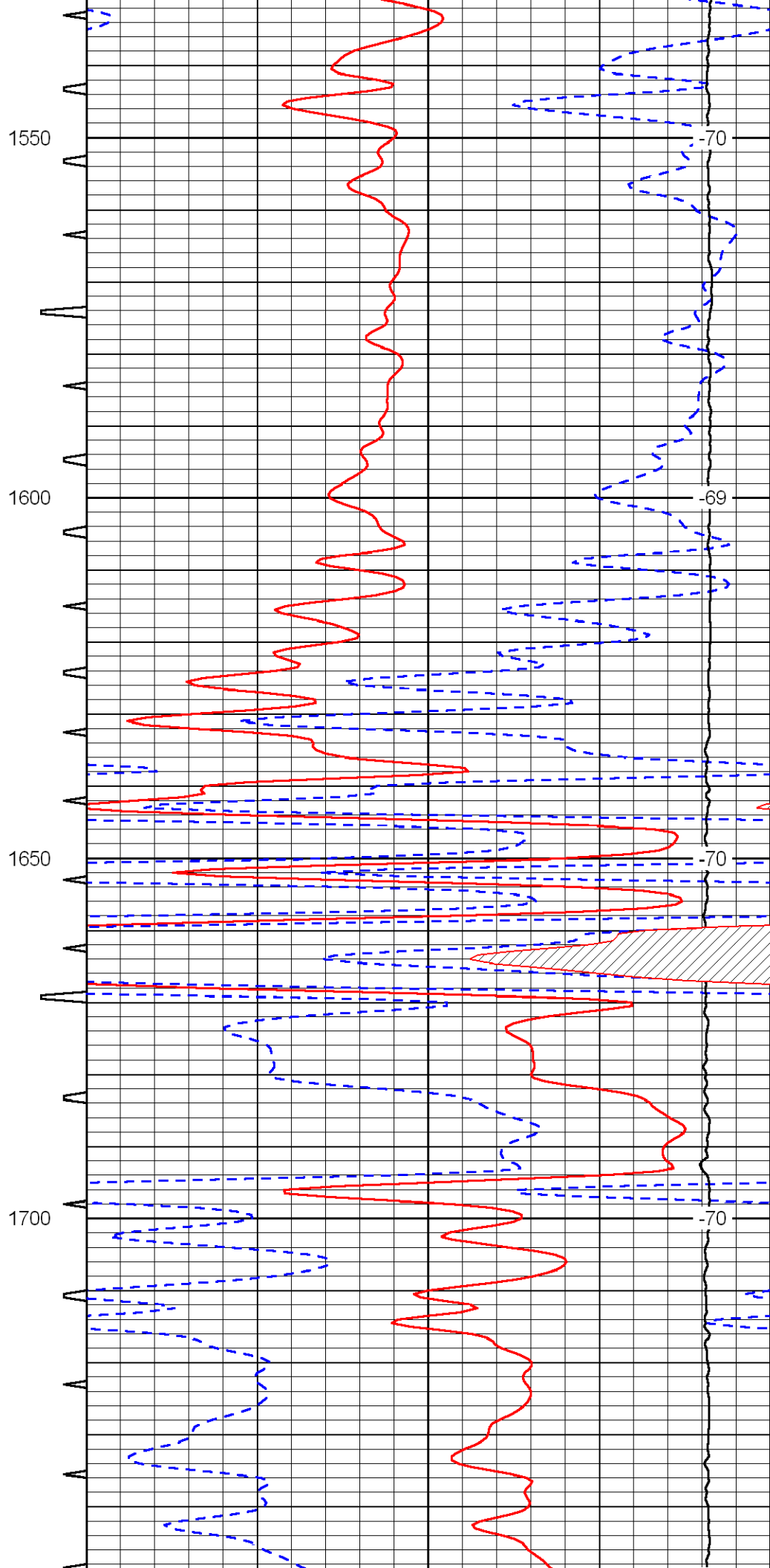
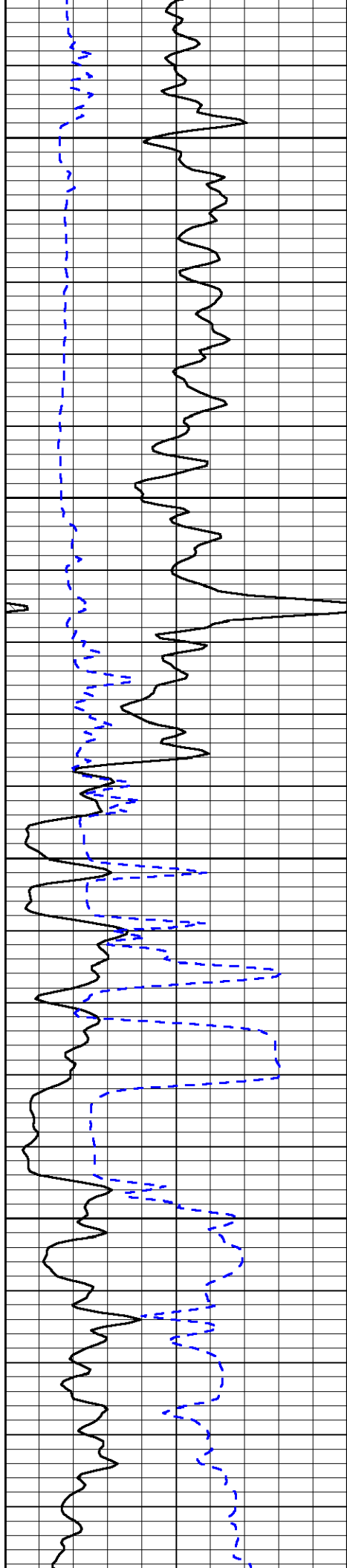


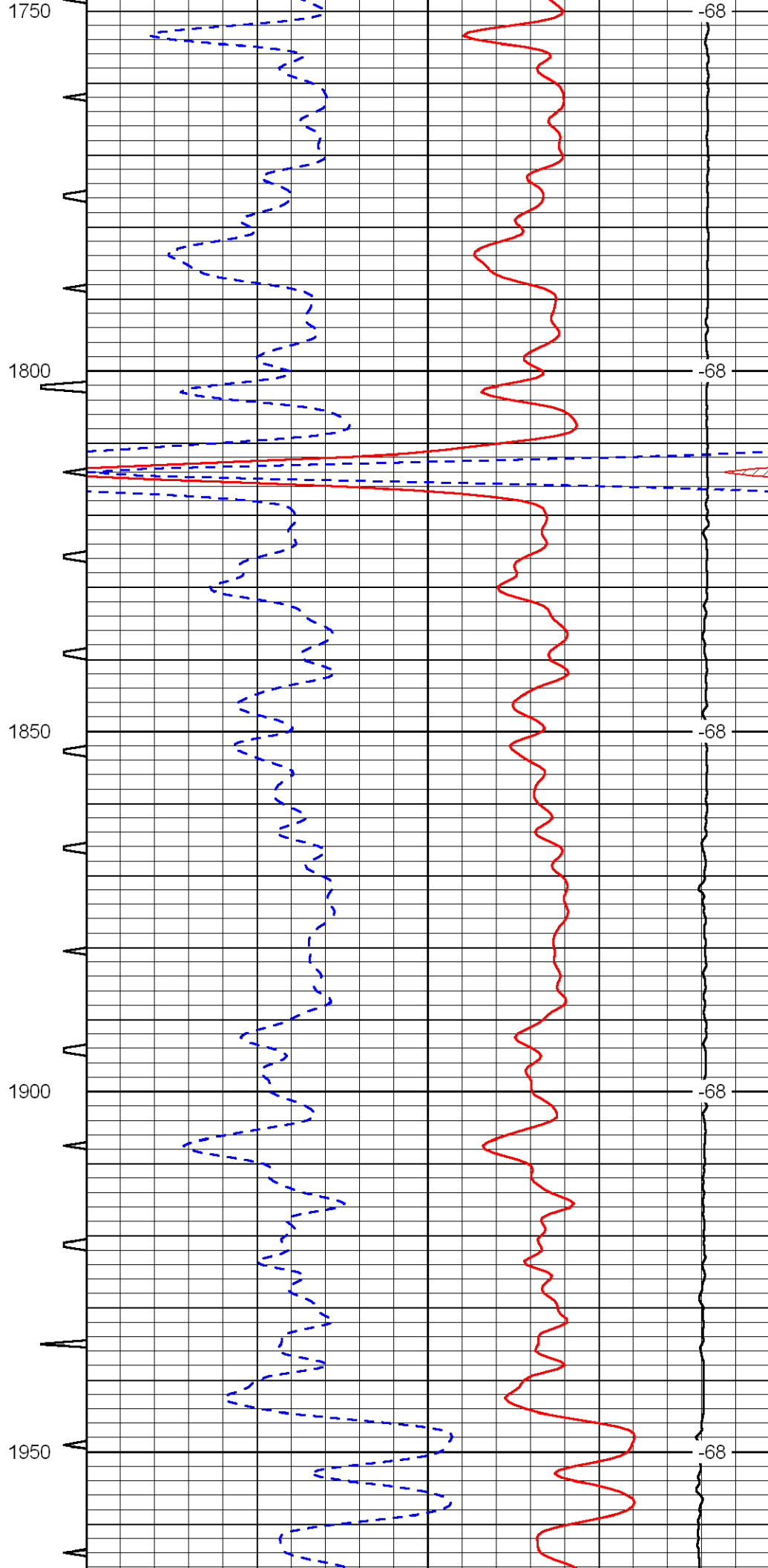
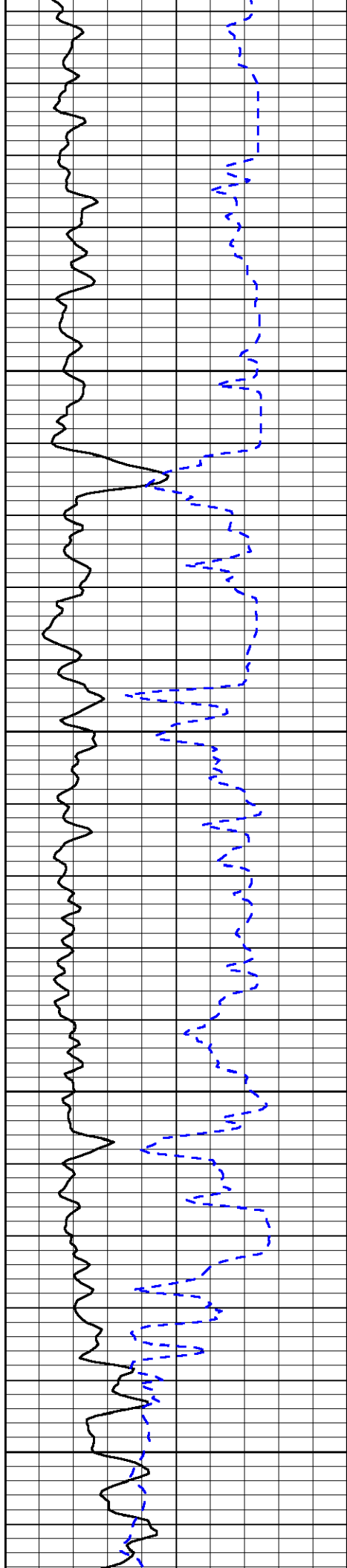


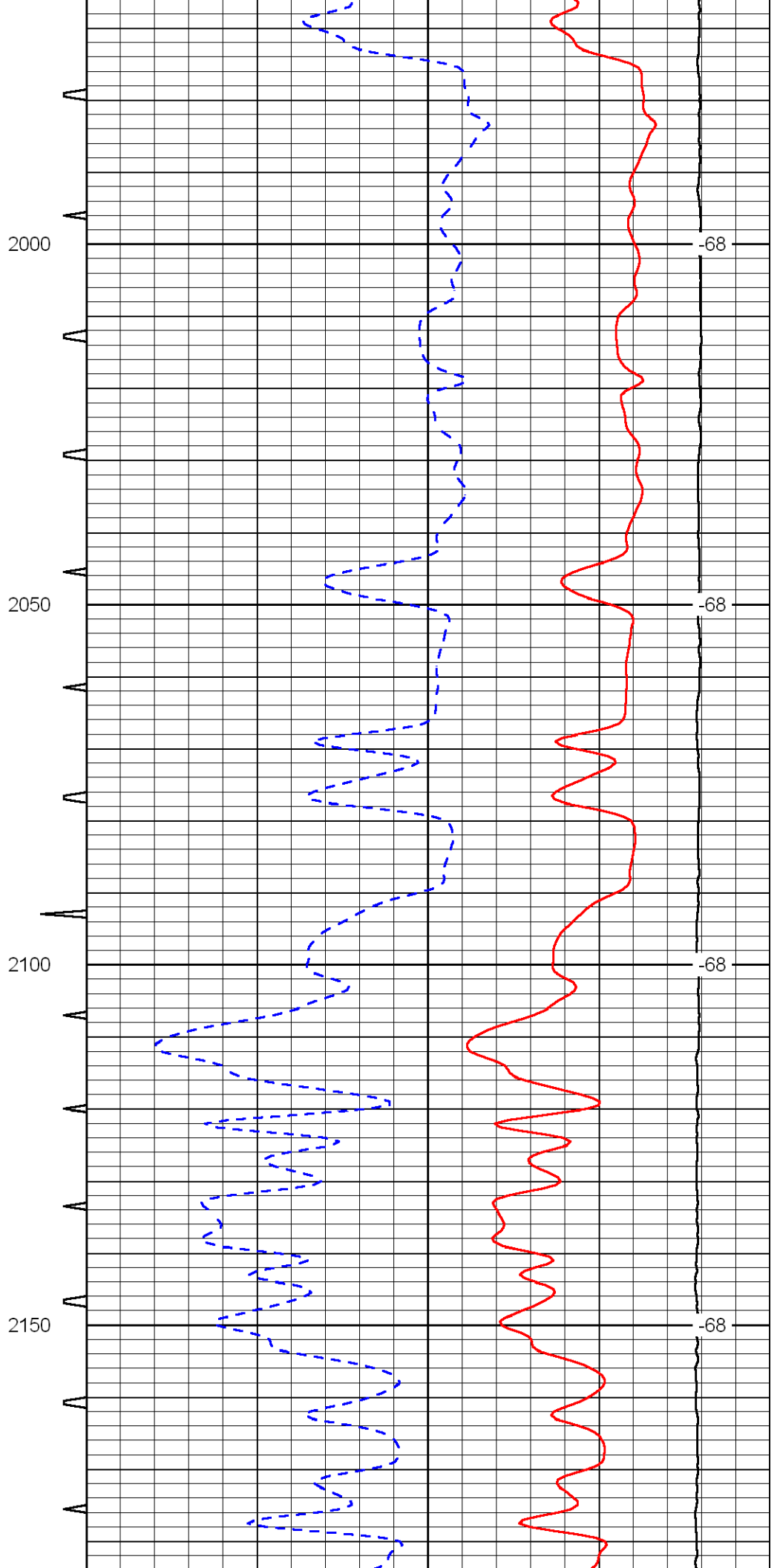
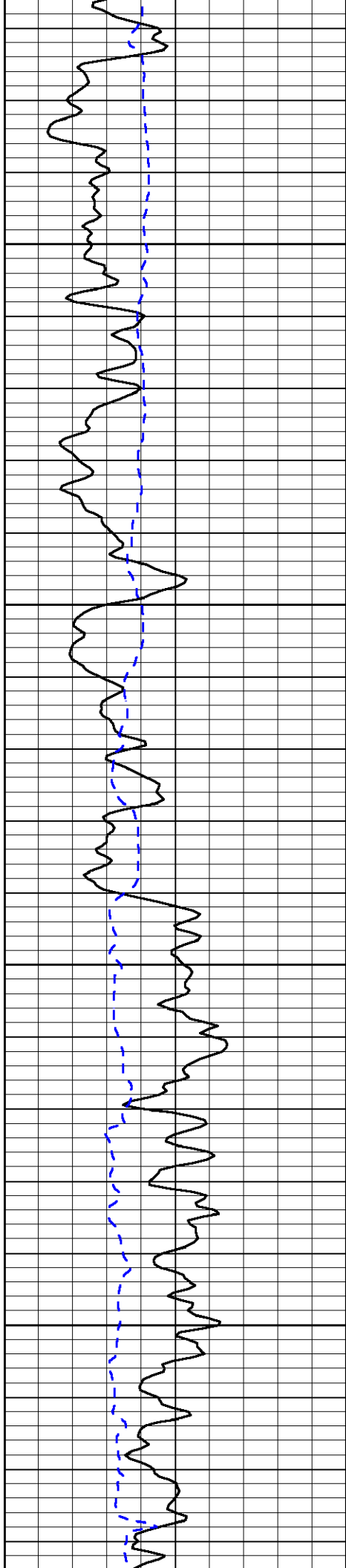


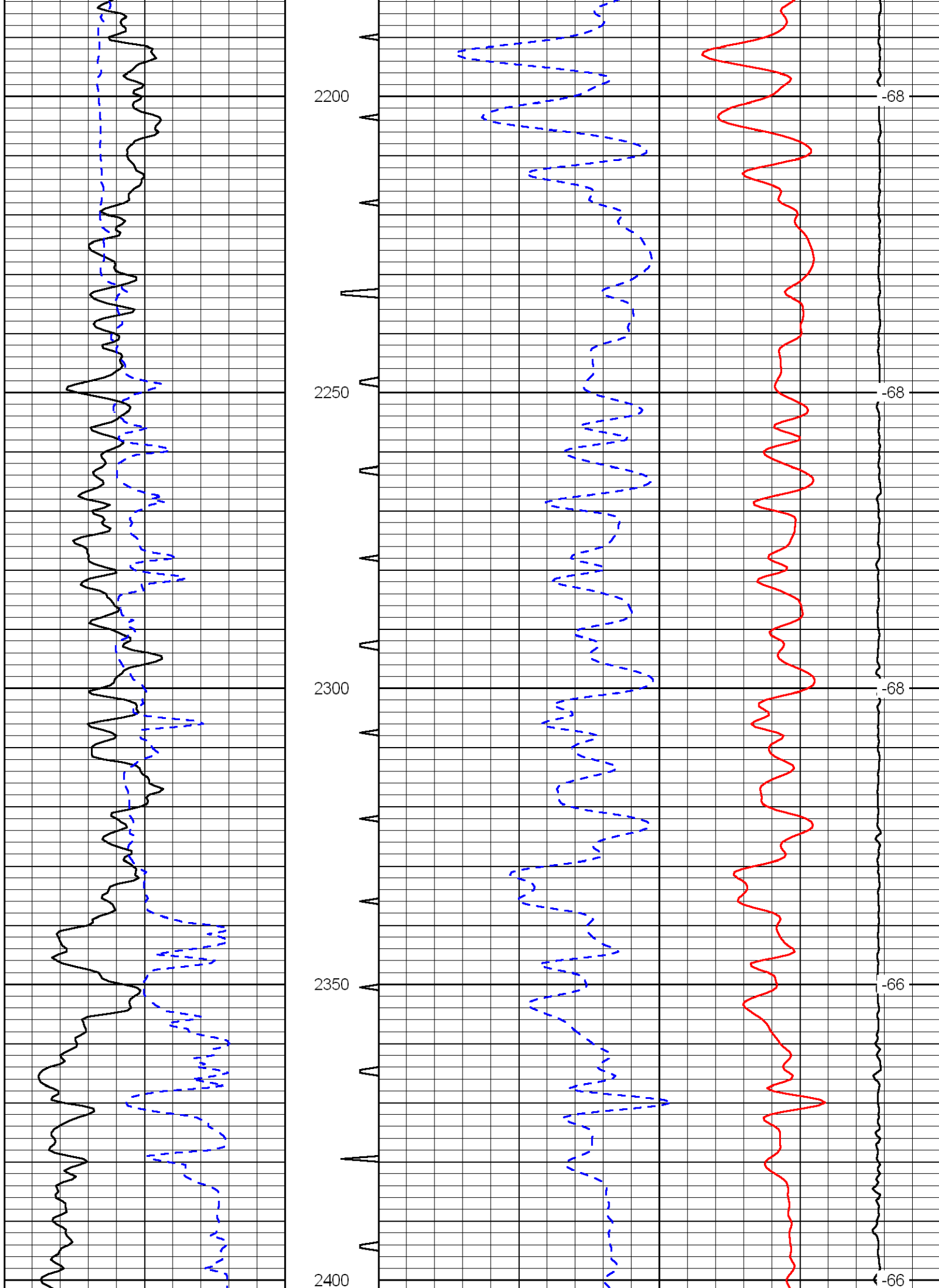


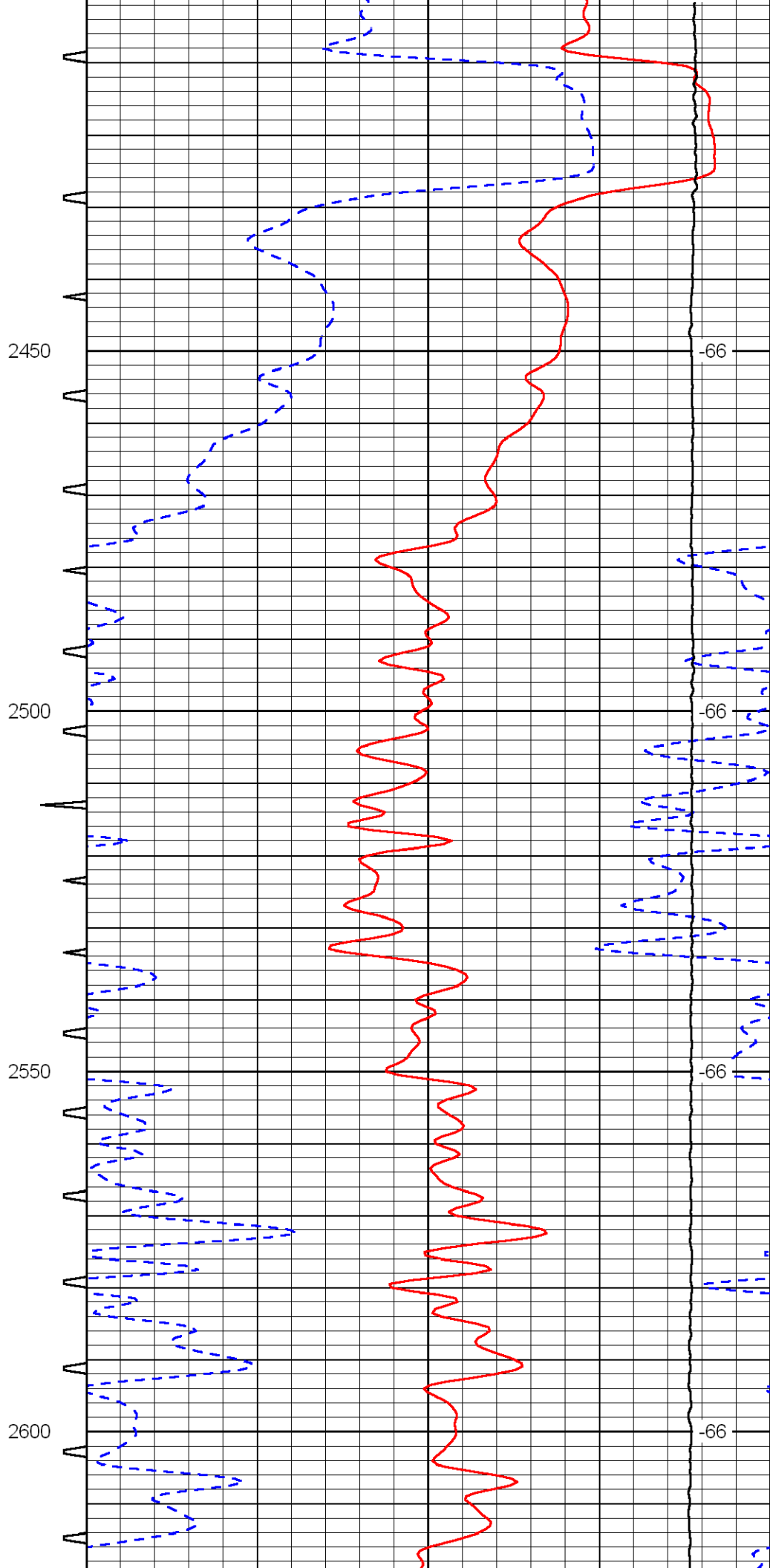
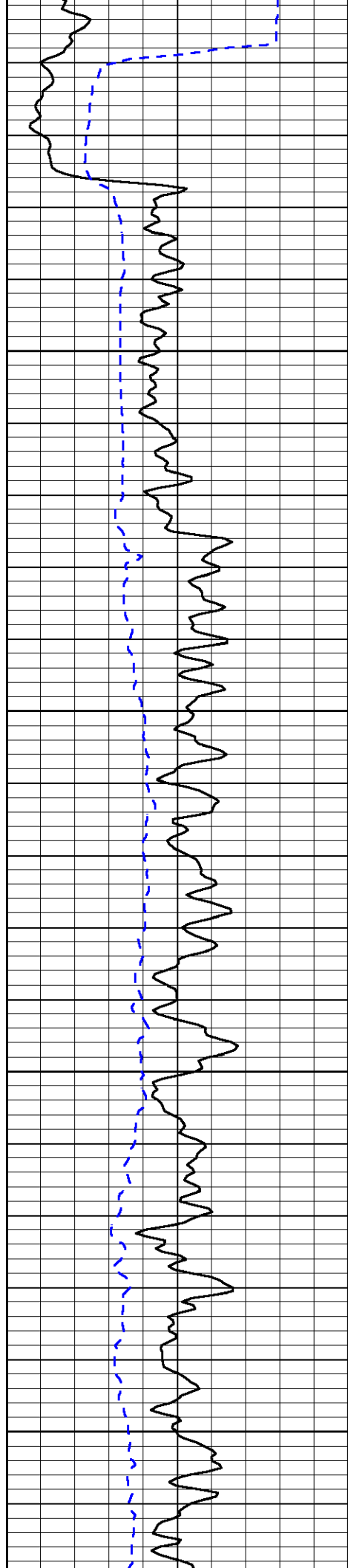


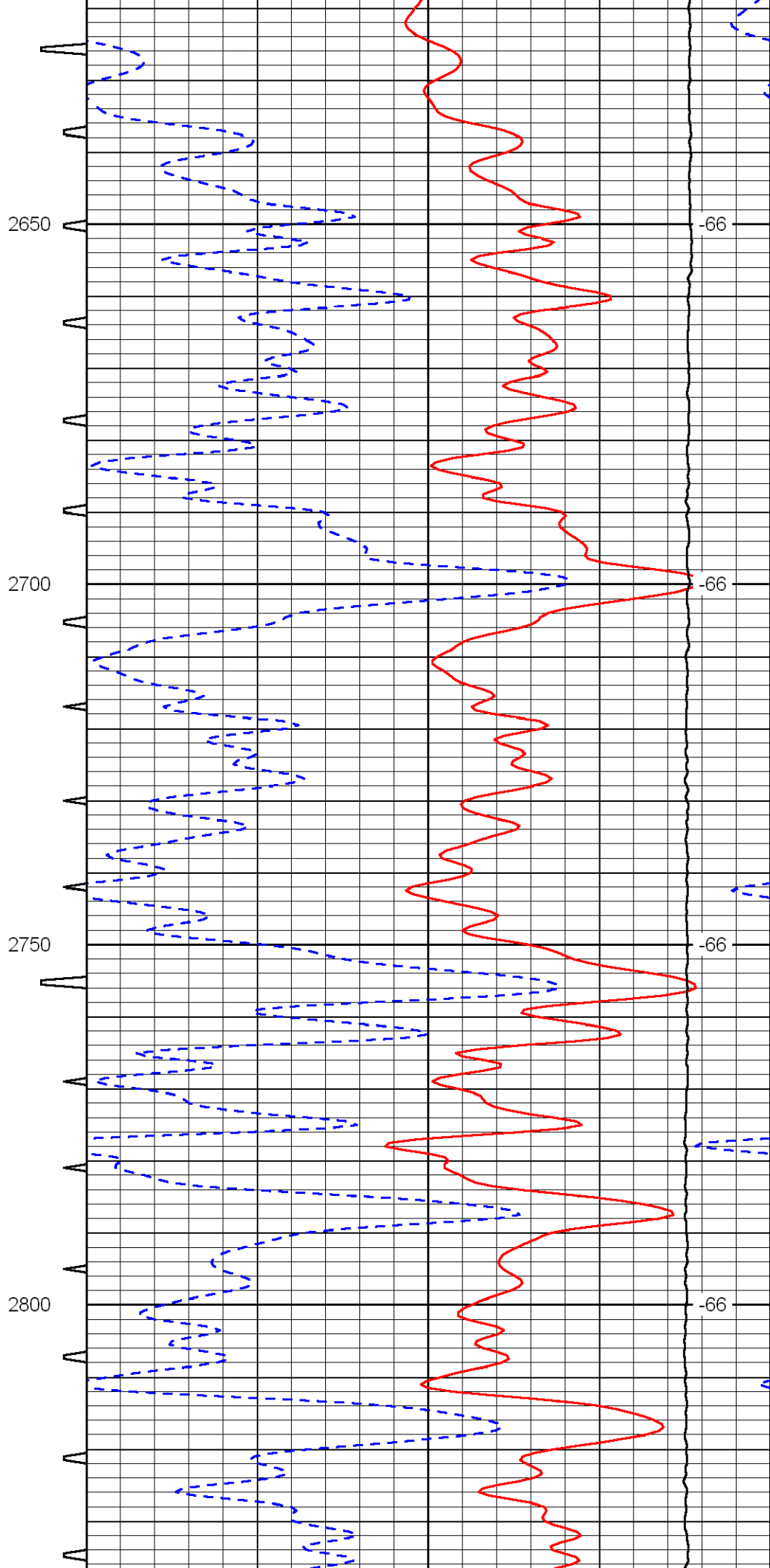
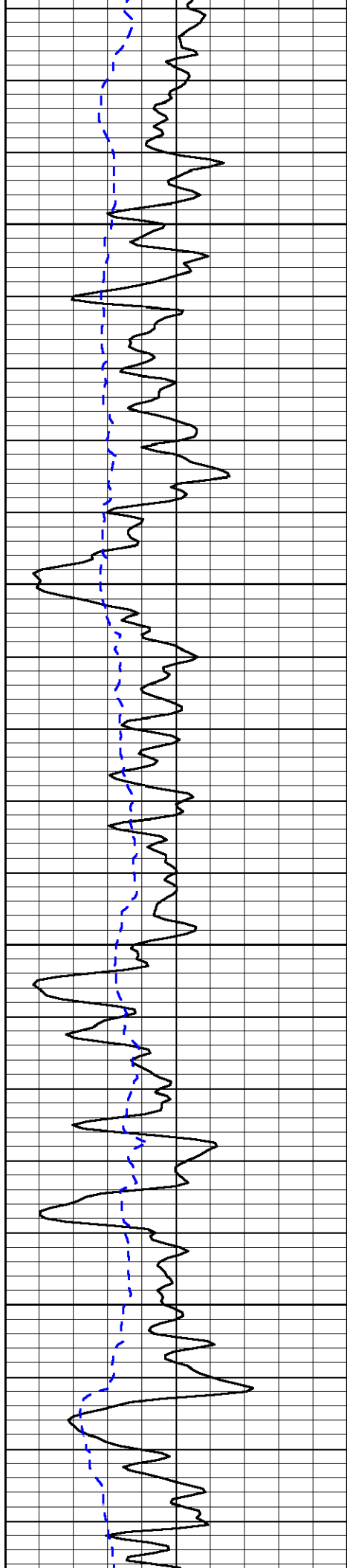


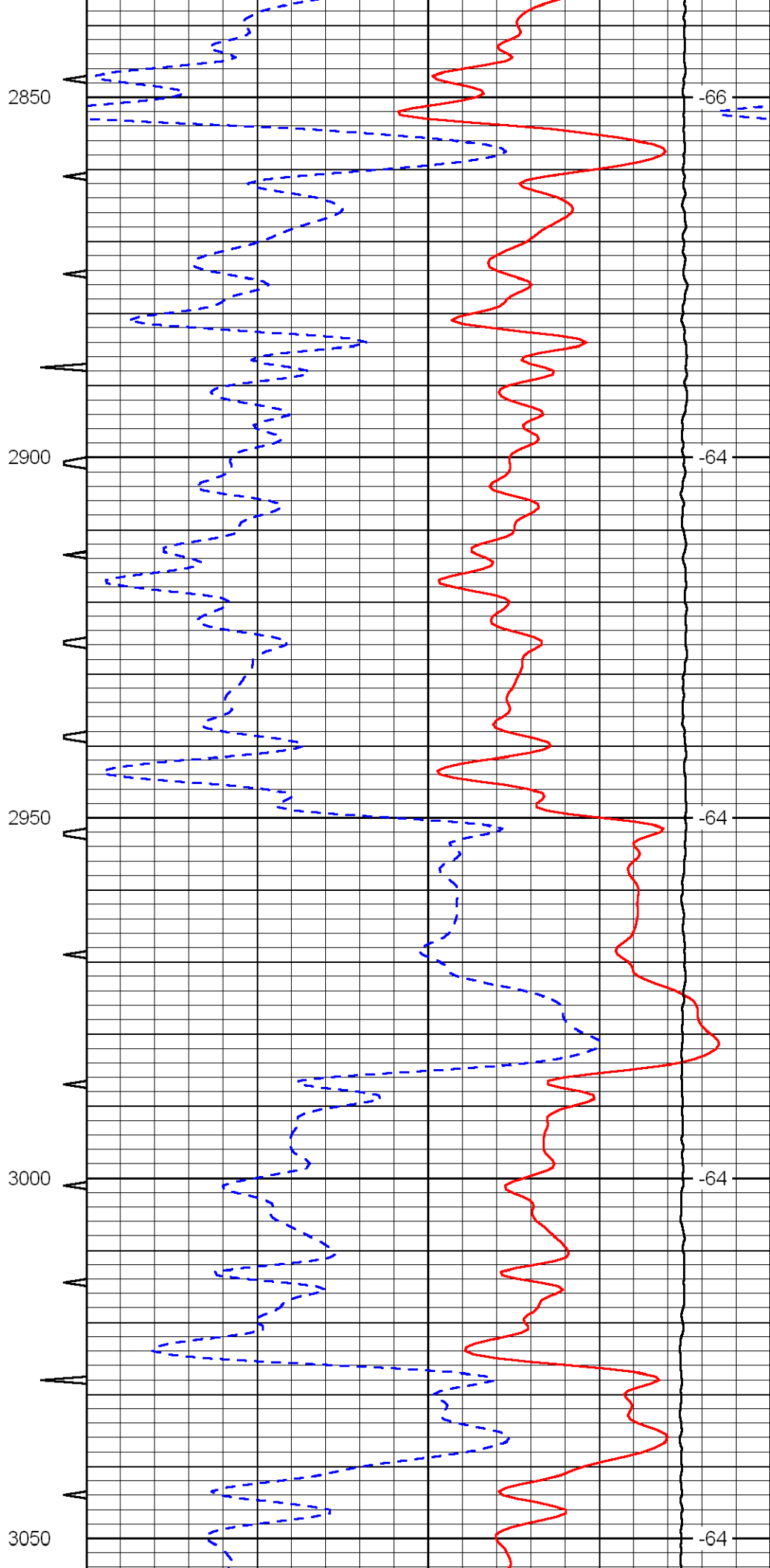
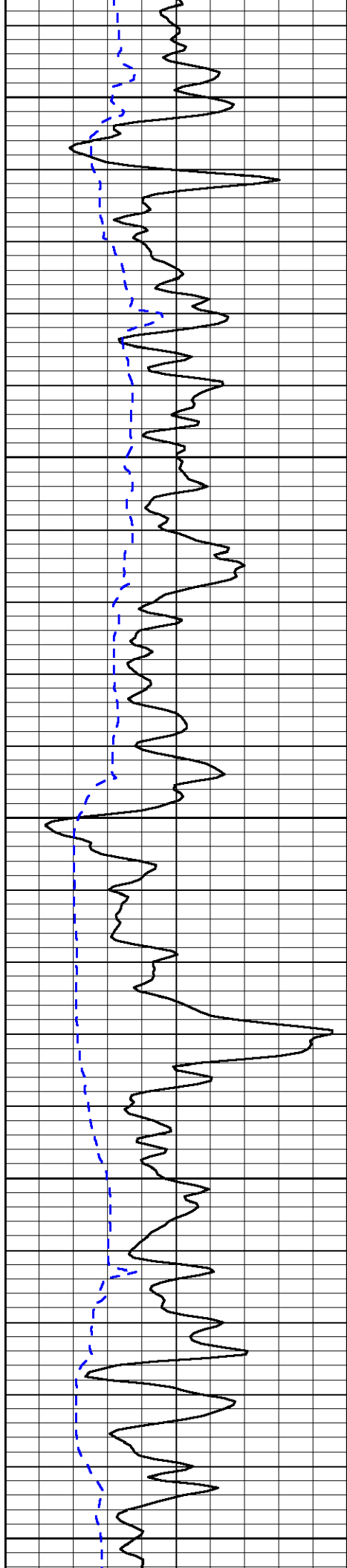


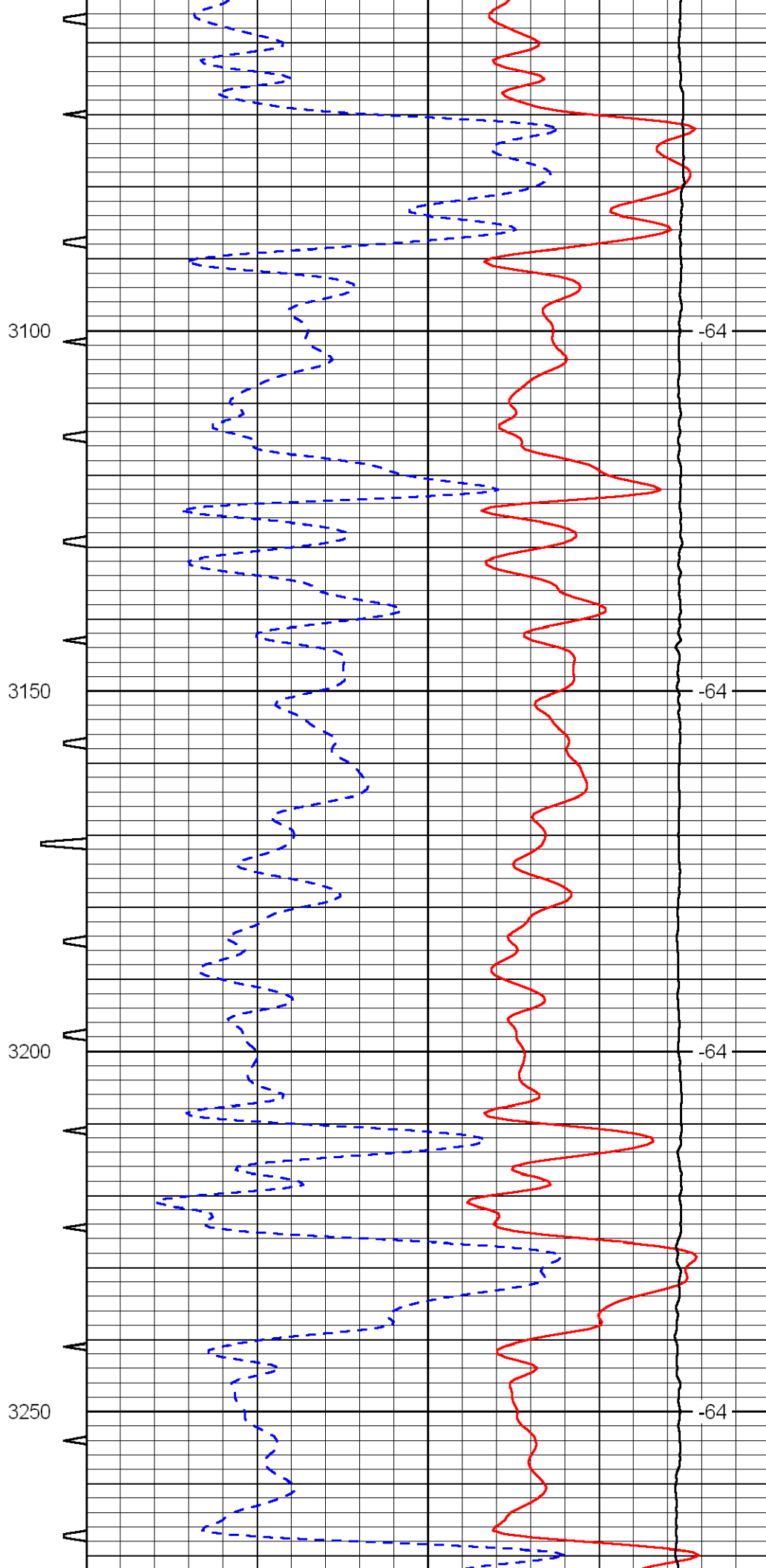
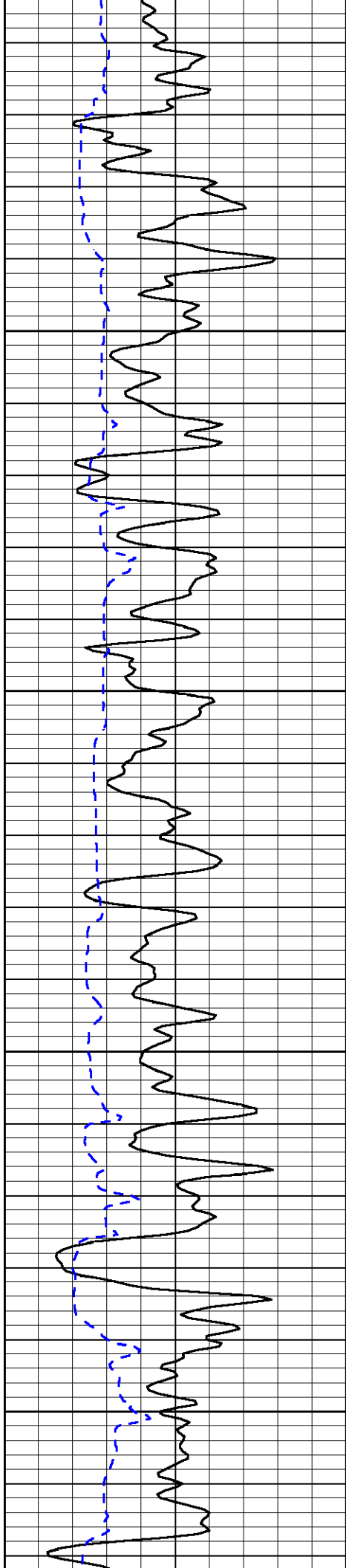


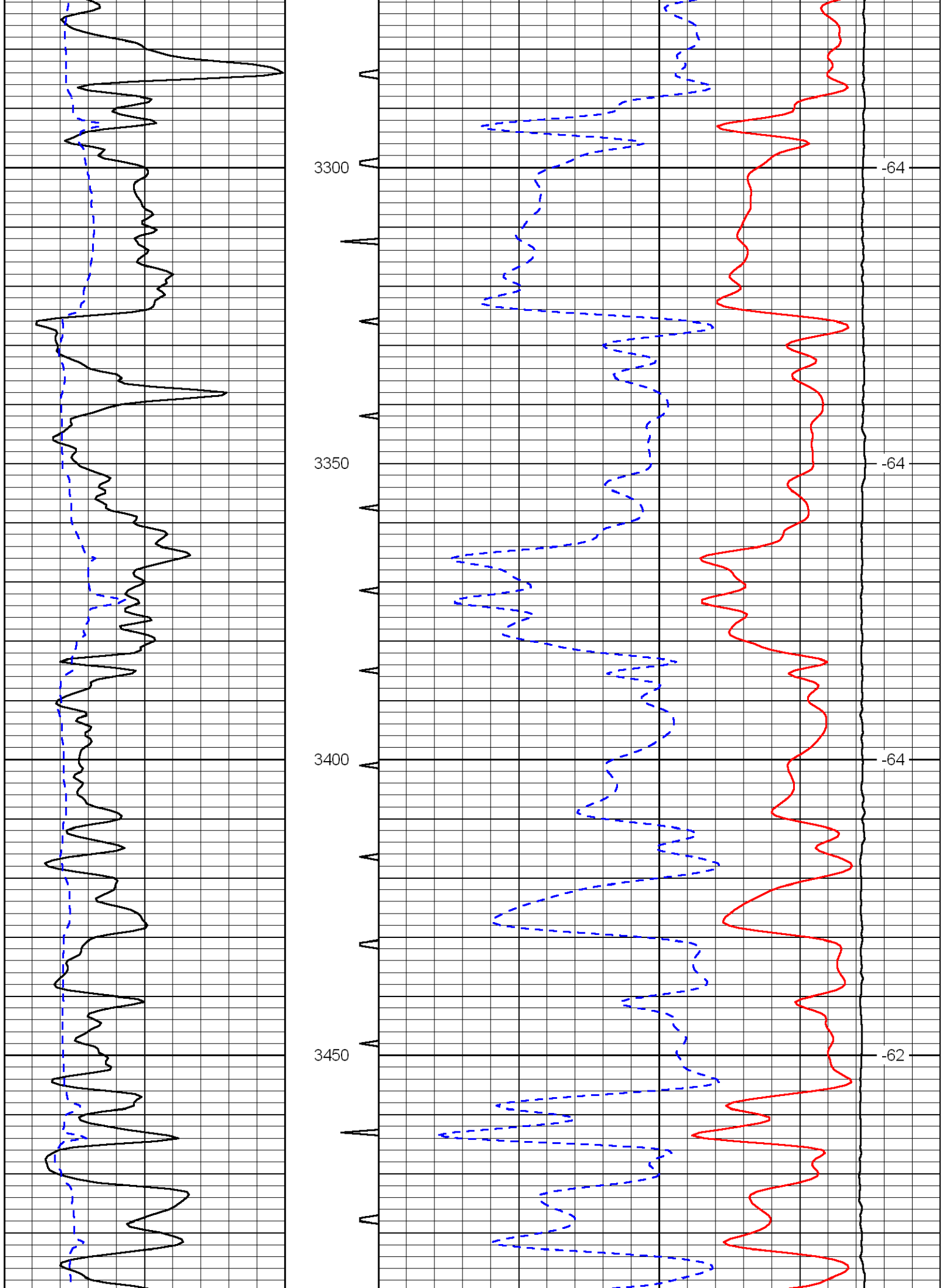


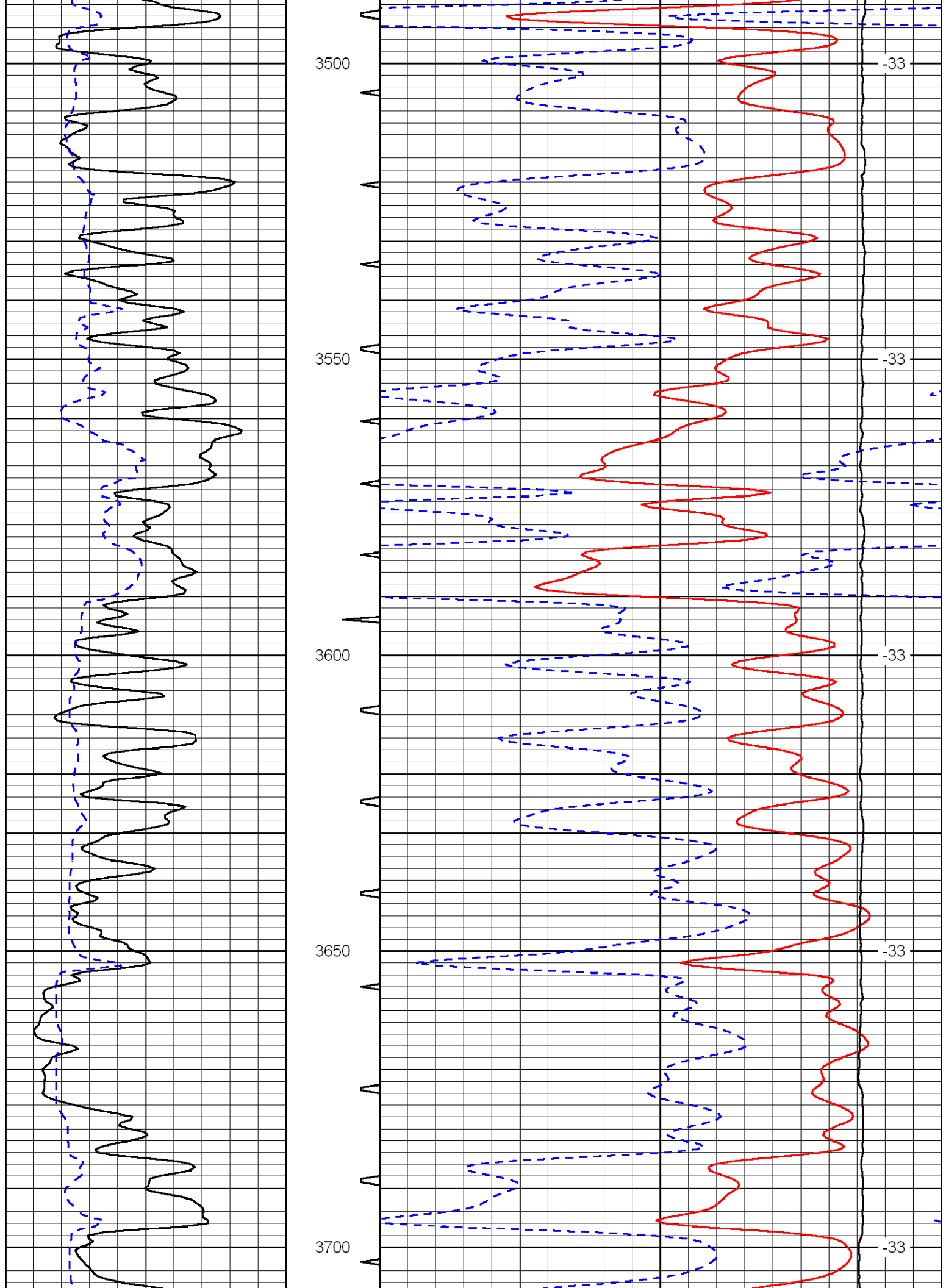


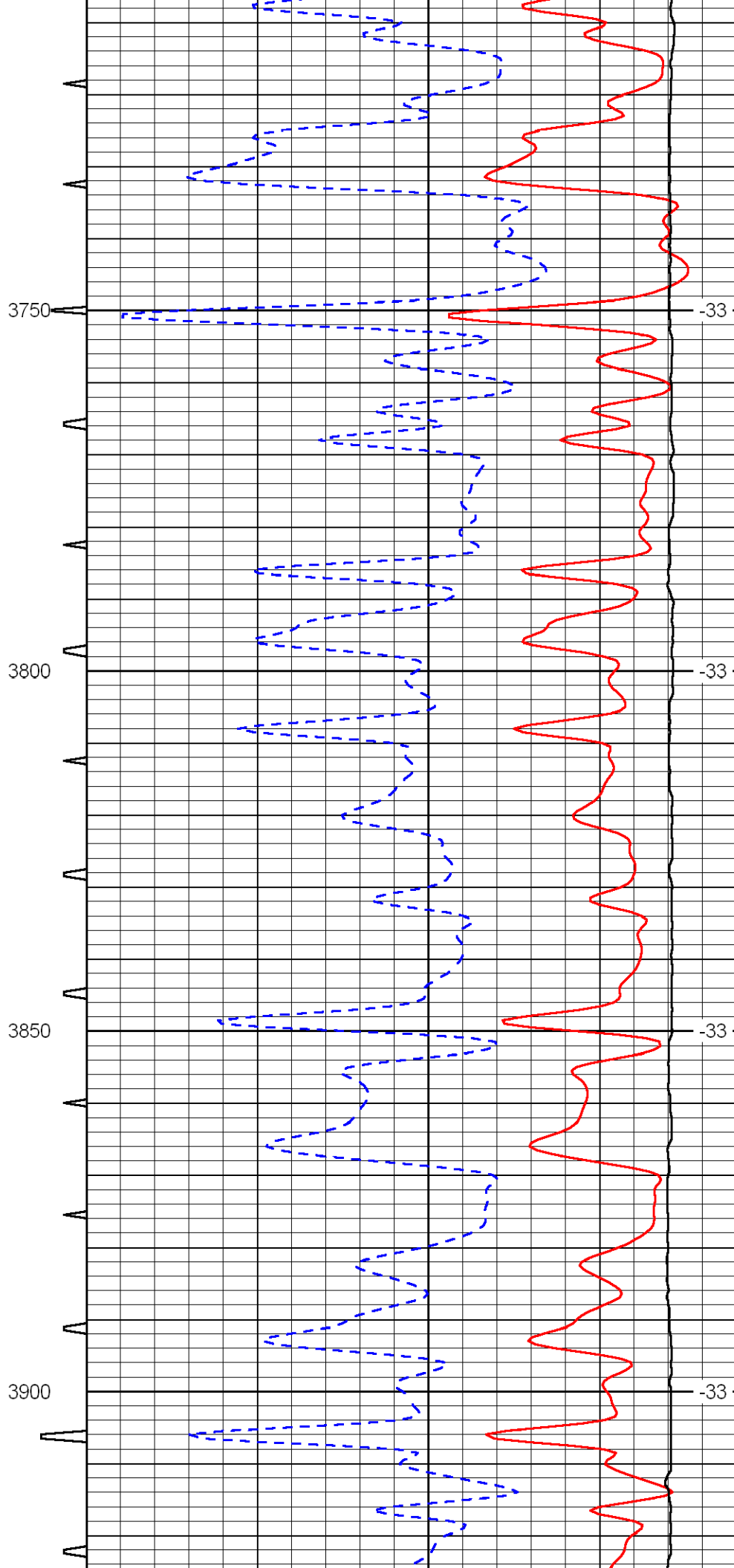
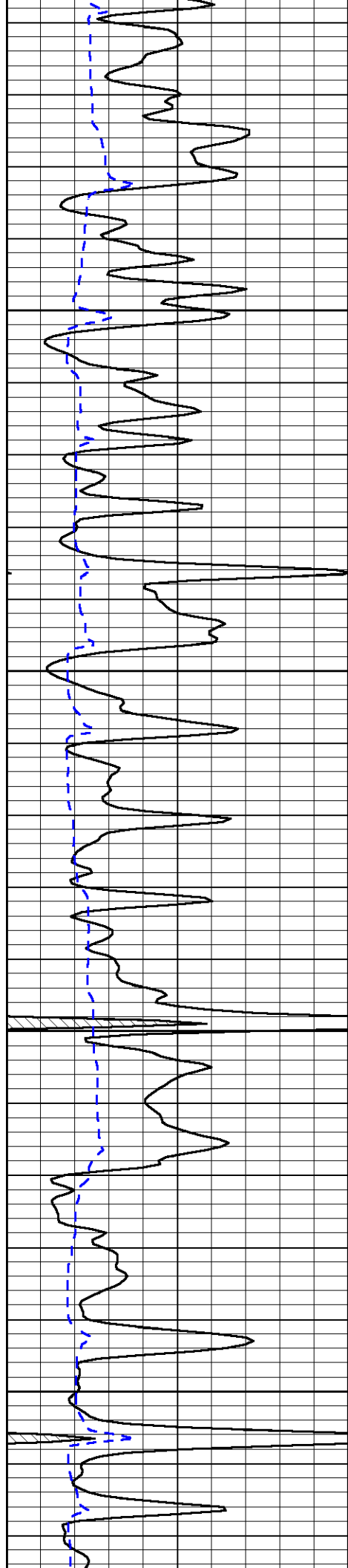












3750

-33

3800

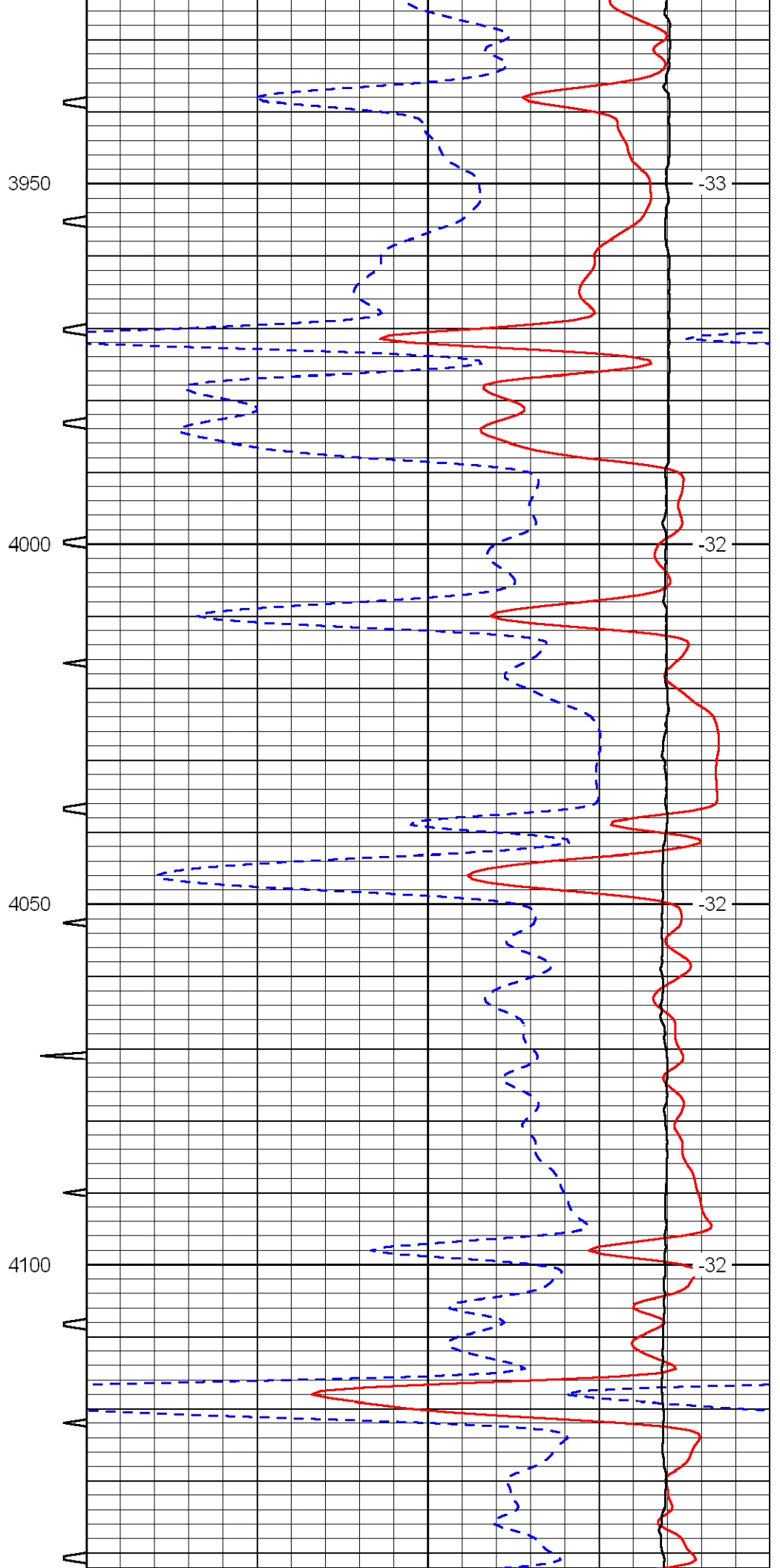
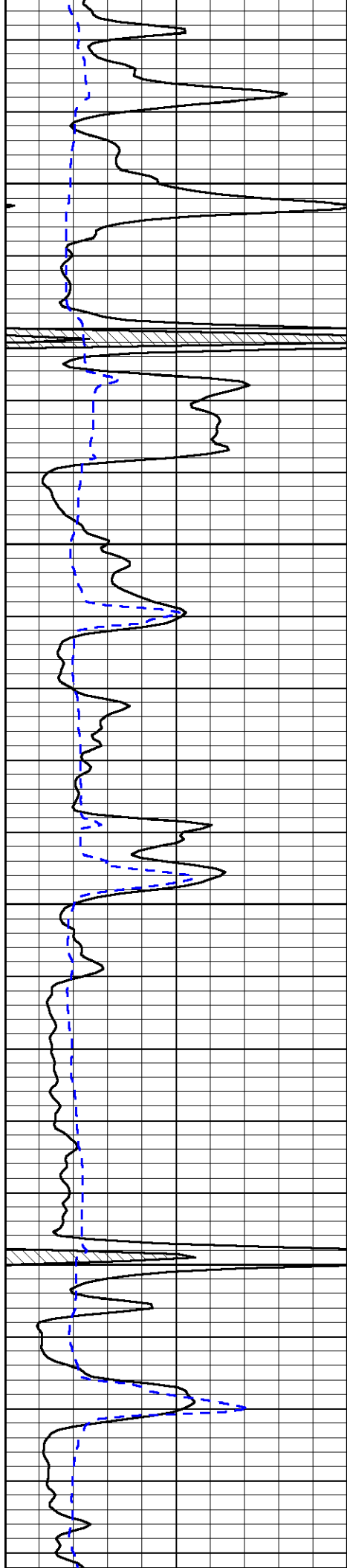
-33

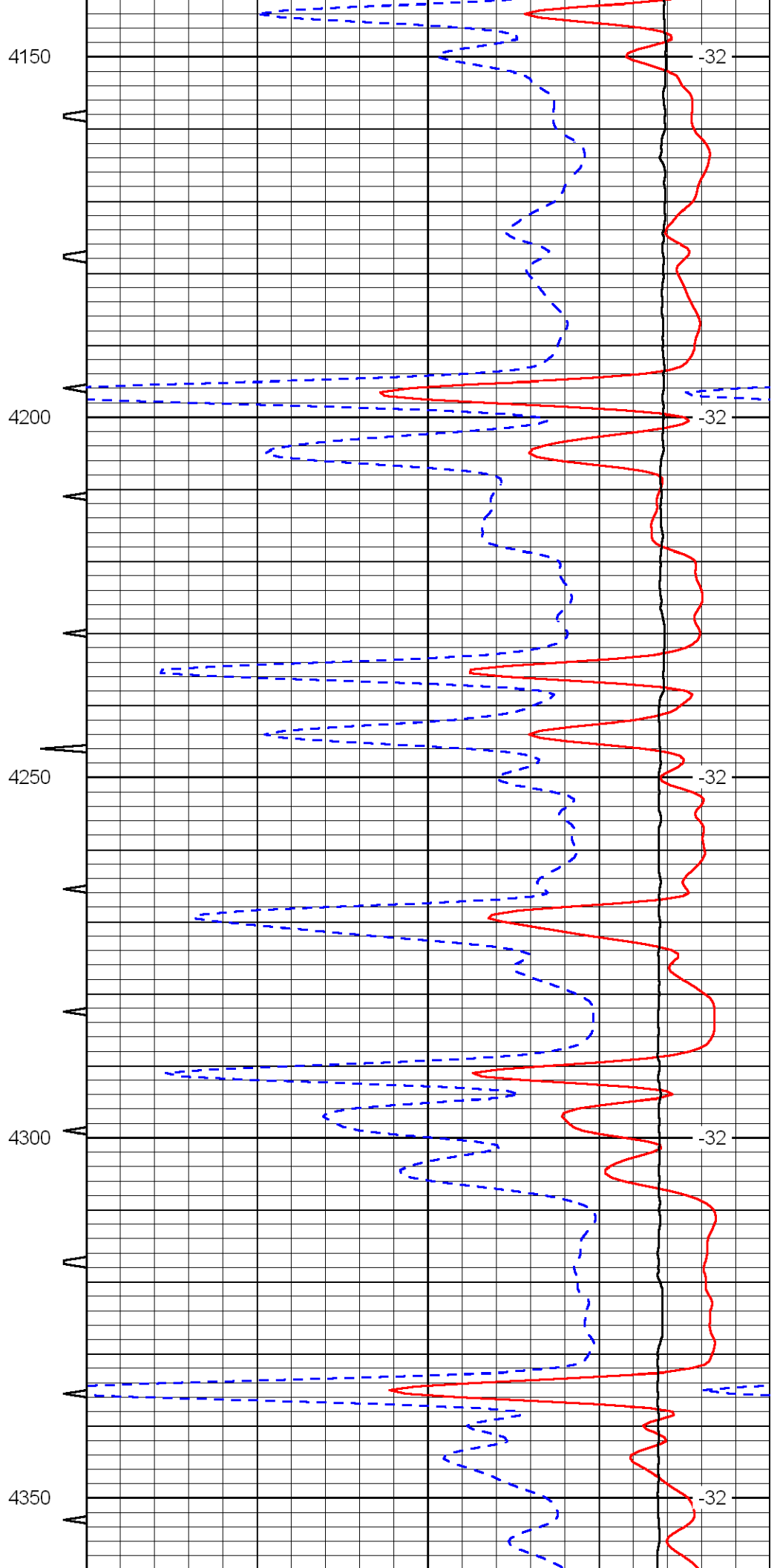
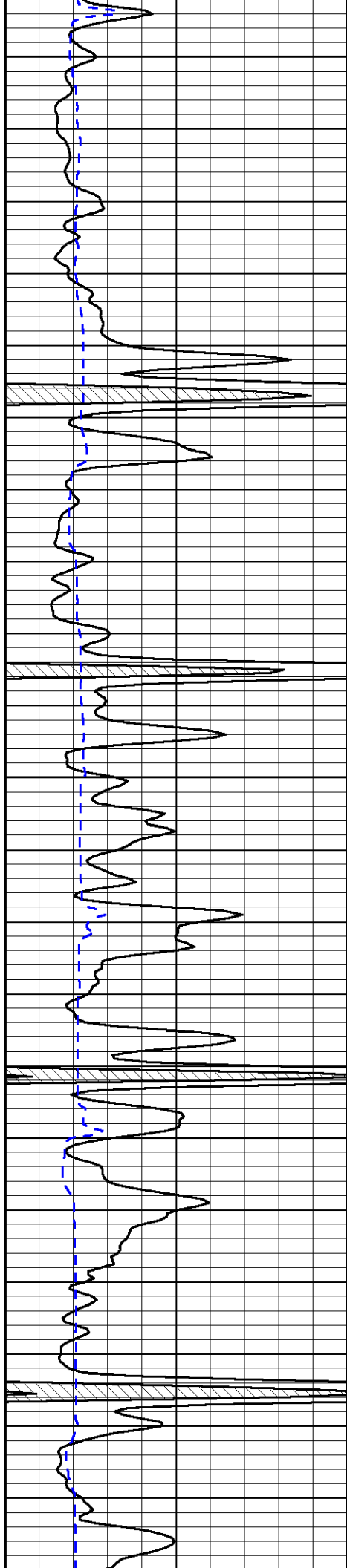
3850

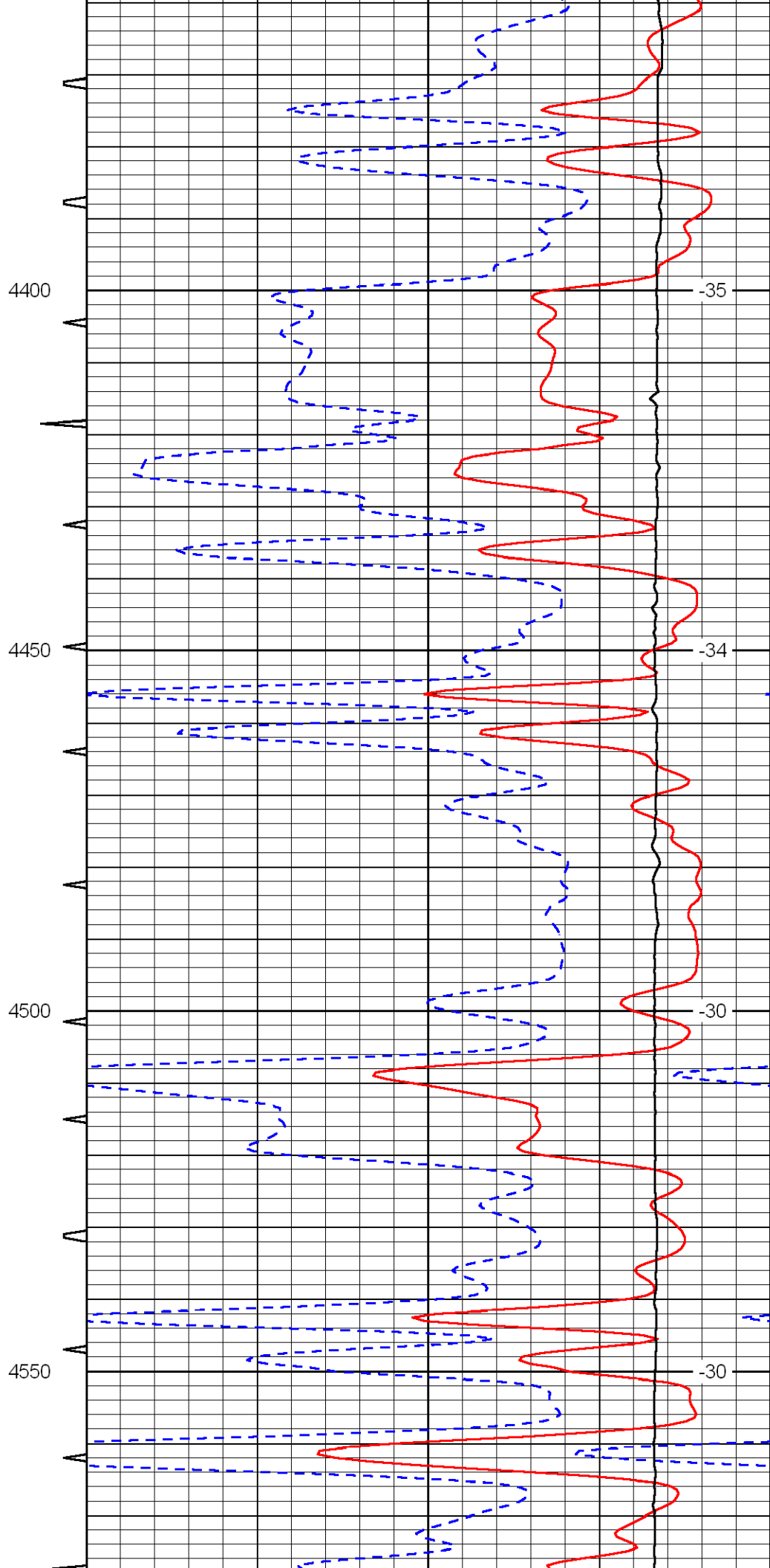
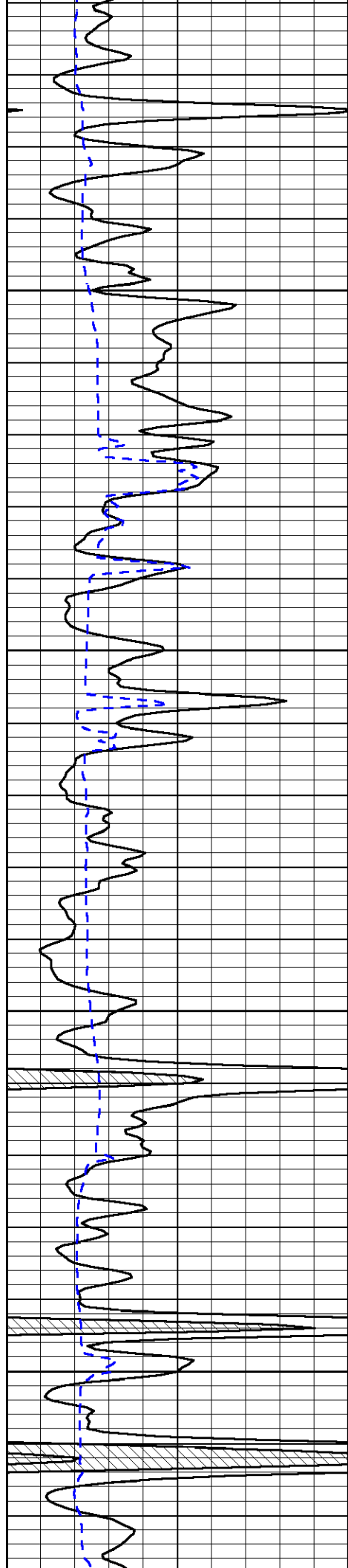
-33

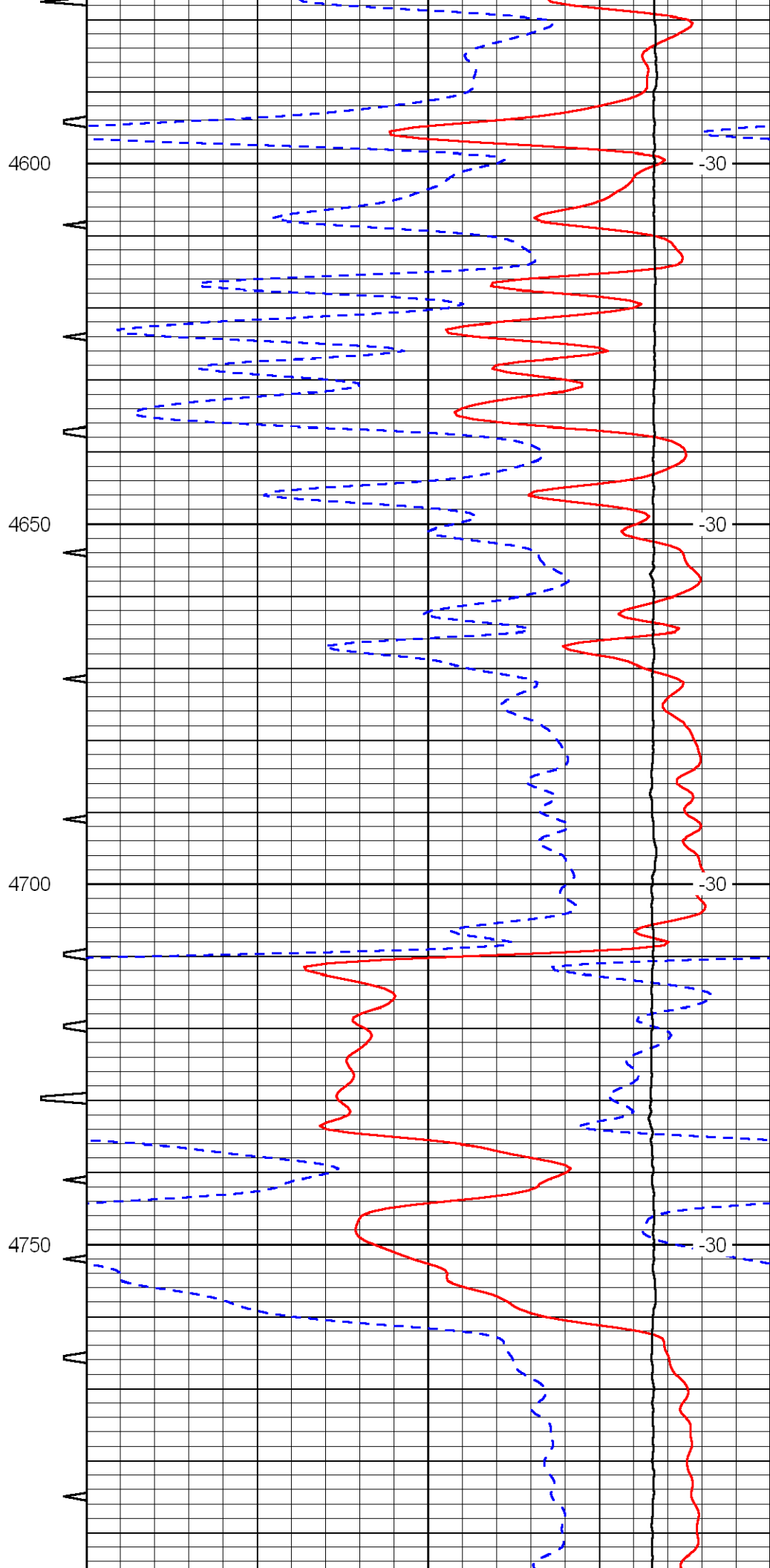
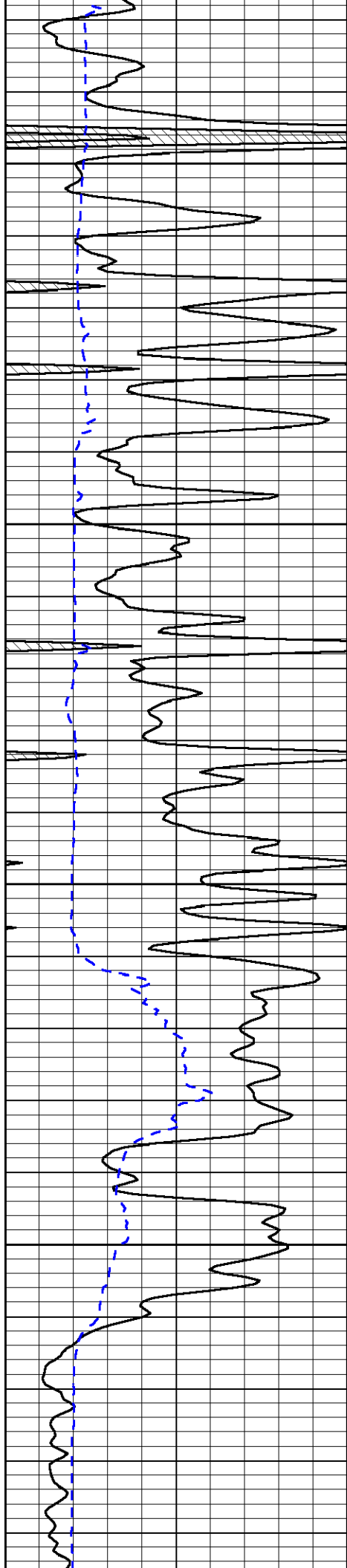
3900

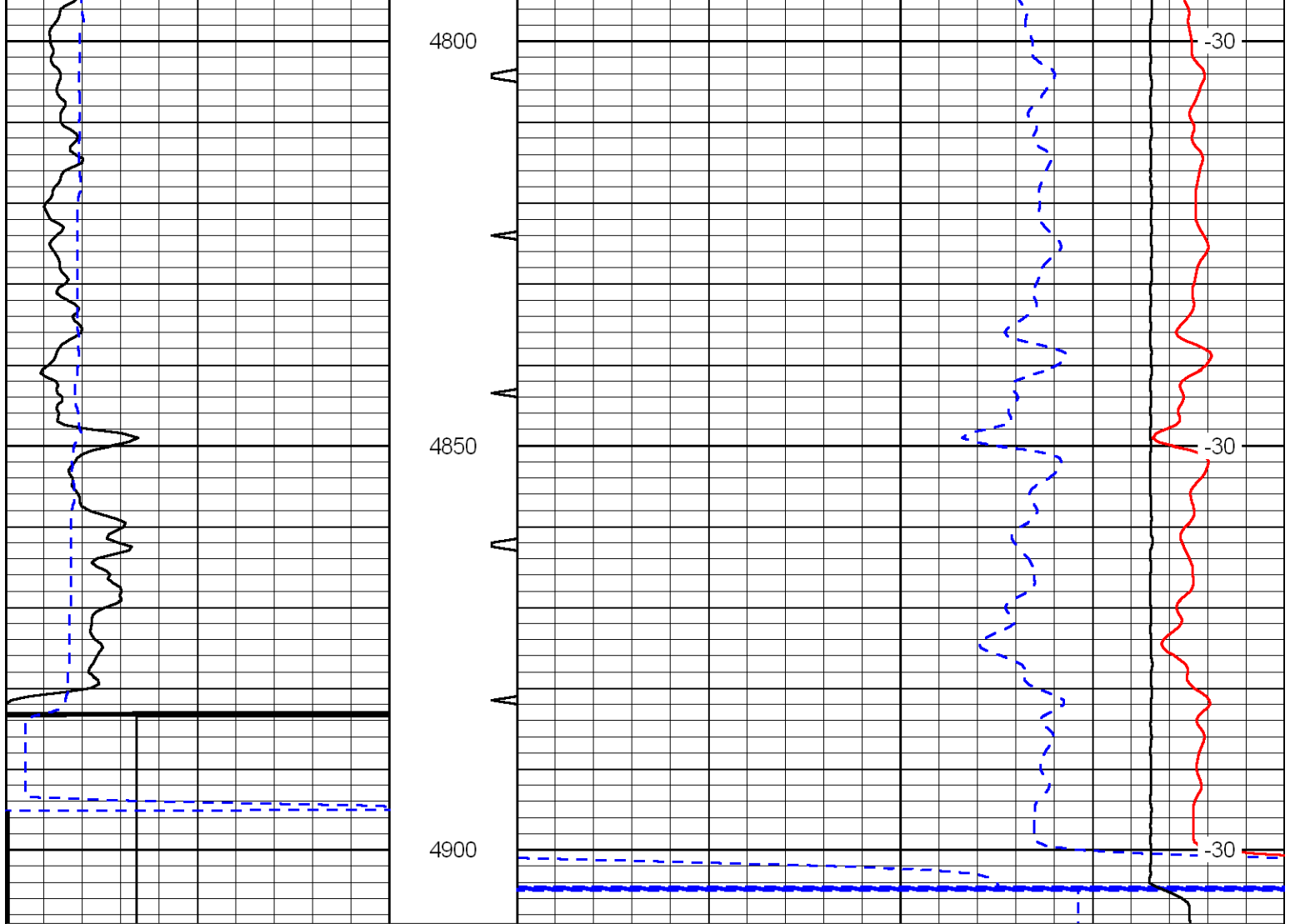
-33











0	Gamma Ray	150	Sonic Int	140	Delta Time (usec/ft)	40
150	Gamma Ray	300	5	0	Sonic Porosity	-10
6	dCAL (GAPI)	16		15000	LTEN (lb)	0
LSPD						