



DIGITAL LOG (785) 625-3858

Dual Compensated Porosity Log

API No. 15-101-22390-00-00

Company Larson Engineering, Inc.  
 Well Shirley #2-10  
 Field Wildcat  
 County Lane  
 State Kansas

Location 698' FSL & 445' FEL

Sec: 10 Twp: 18S Rge: 30W

Other Services DIL/MEL

Permanent Datum Ground Level Elevation 2863  
 Log Measured From Kelly Bushing 7 Ft. Above Perm. Datum  
 Drilling Measured From Kelly Bushing

K.B. 2870  
 D.F. G.L. 2863

Date	7/21/2012
Run Number	One
Type Log	CNL / CDL
Depth Driller	4640
Depth Logger	4640
Bottom Logged Interval	4619
Top Logged Interval	3600
Type Fluid In Hole	Chemical
Salinity, PPM CL	2500
Density	9.2
Level	Full
Max. Rec. Temp. F	124
Operating Rig Time	4 Hours
Equipment -- Location	91 Hays
Recorded By	D. Schmidt
Witnessed By	Vern Schrag

Borehole Record		Casing Record				
Run No	Bit From	To	Size	Wgt. 23#	From	To
One	12.25	00	262	8.625	00	262
Two	7.875	262	TD			

<<< Fold Here >>>

All interpretations are opinions based on inferences from electrical or other measurements and we cannot and do not guarantee the accuracy or correctness of any interpretation, and we shall not, except in the case of gross or willful negligence on our part, be liable or responsible for any loss, costs, damages, or expenses incurred or sustained by anyone resulting from any interpretation made by any of our officers, agents or employees. These interpretations are also subject to our general terms and conditions set out in our current Price Schedule.

Comments

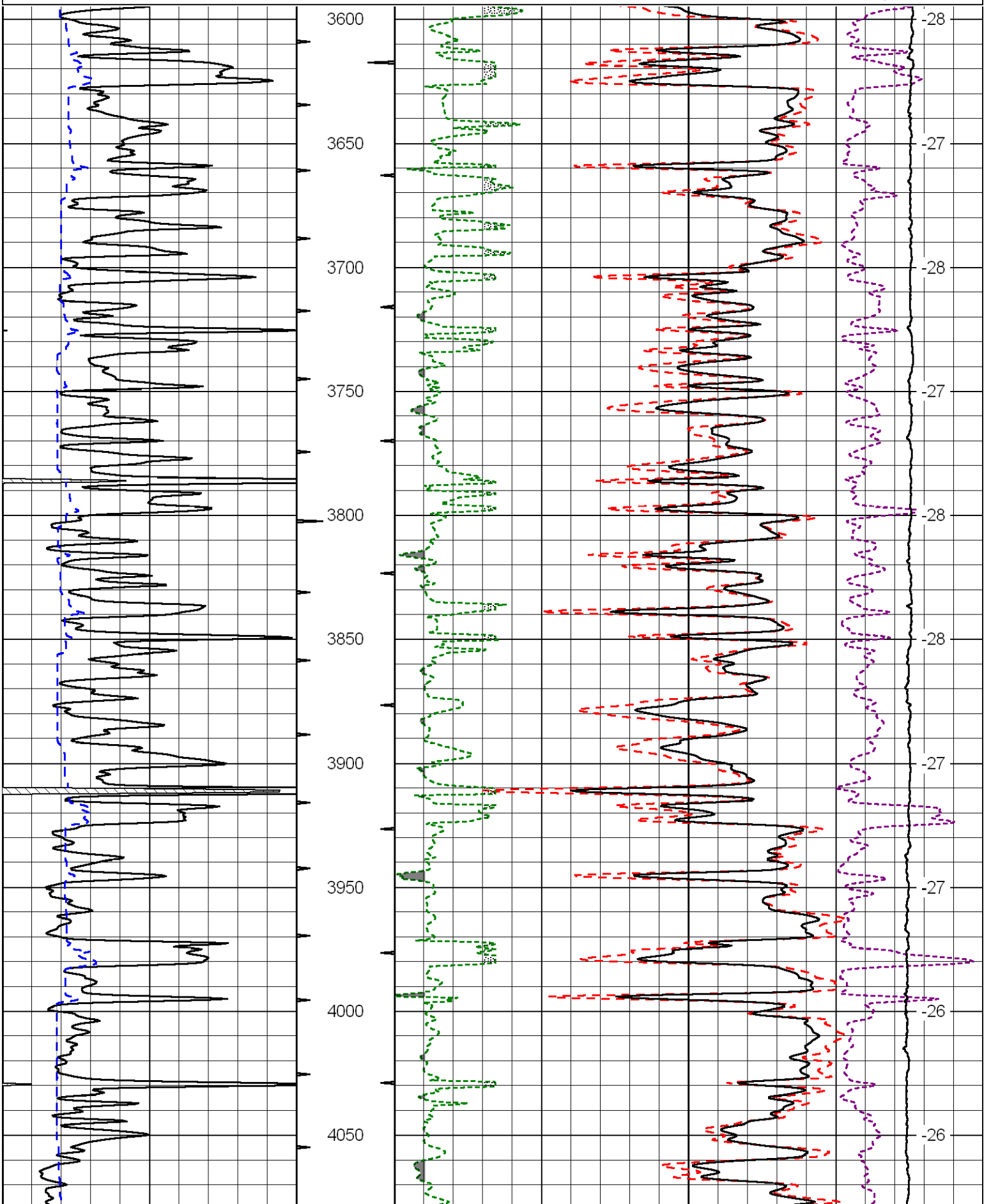
Thank you for using Log-Tech, Inc.  
 (785) 625-3858

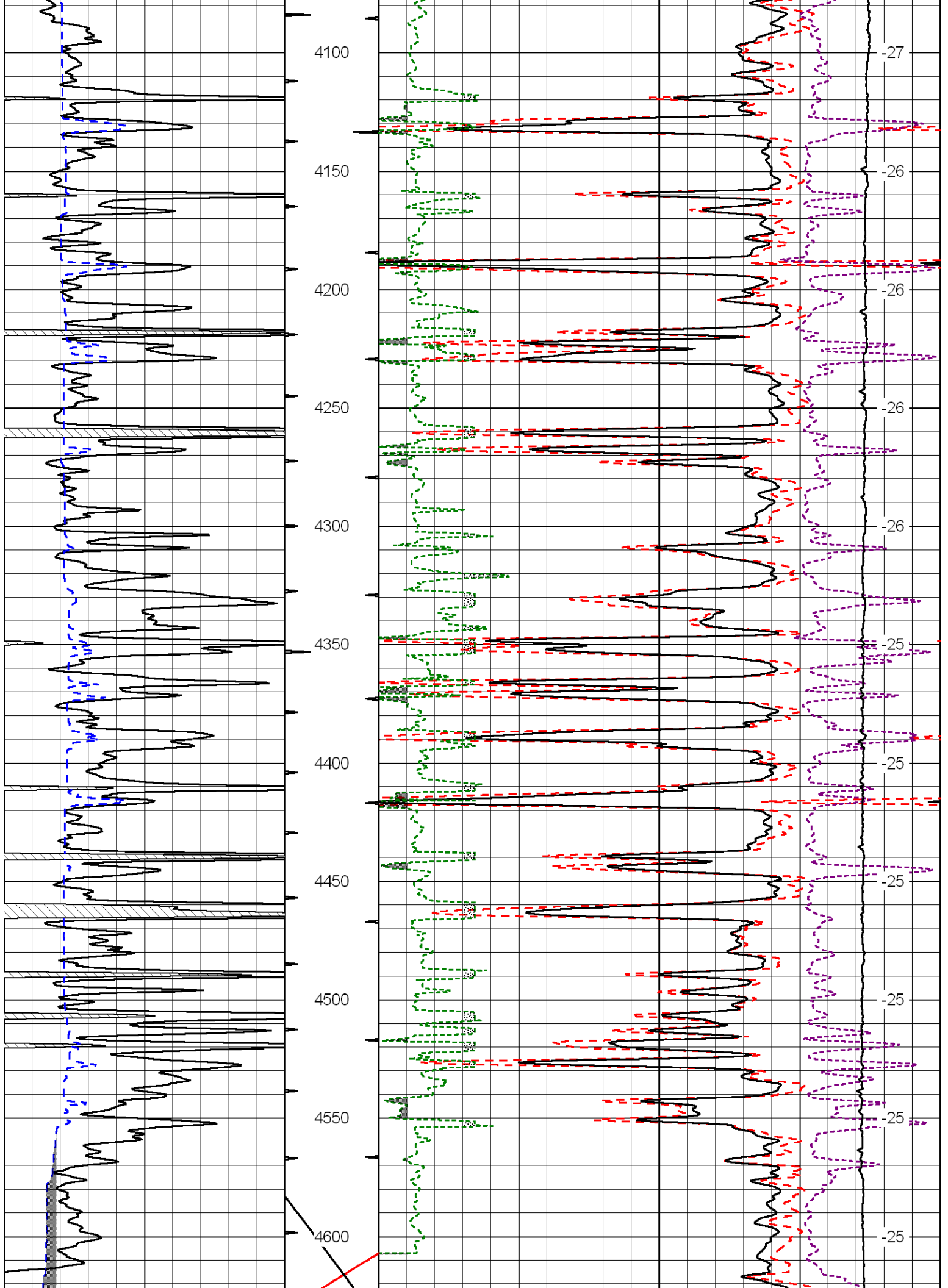
Dighton,  
 8 W to Dodge Rd, 1 1/8 N,  
 W into

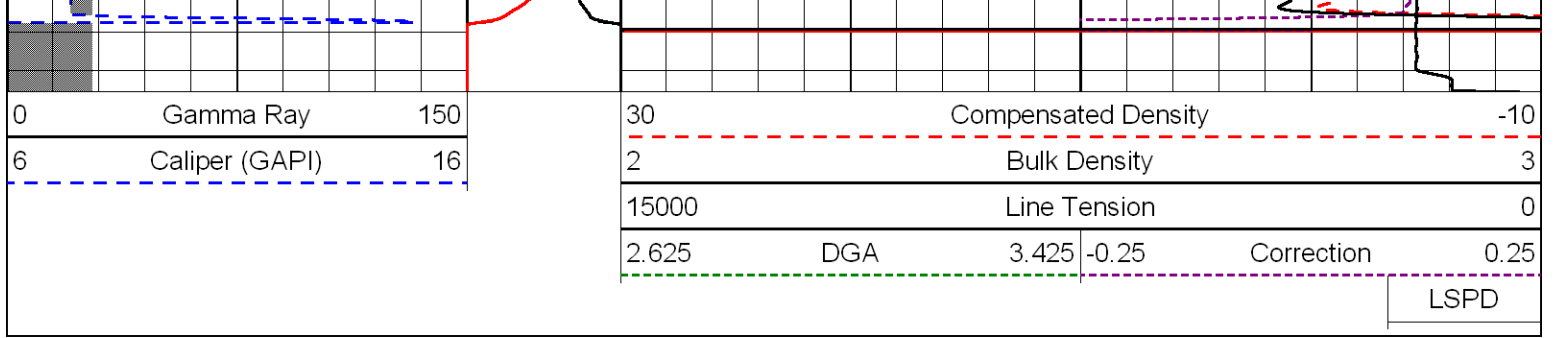
Database File: laron\_072112hd.db  
 Dataset Pathname: dil/larstack  
 Presentation Format: cdl  
 Dataset Creation: Sat Jul 21 10:10:25 2012  
 Charted by: Depth in Feet scaled 1:600

0	Gamma Ray	150
6	Caliper (GAPI)	16

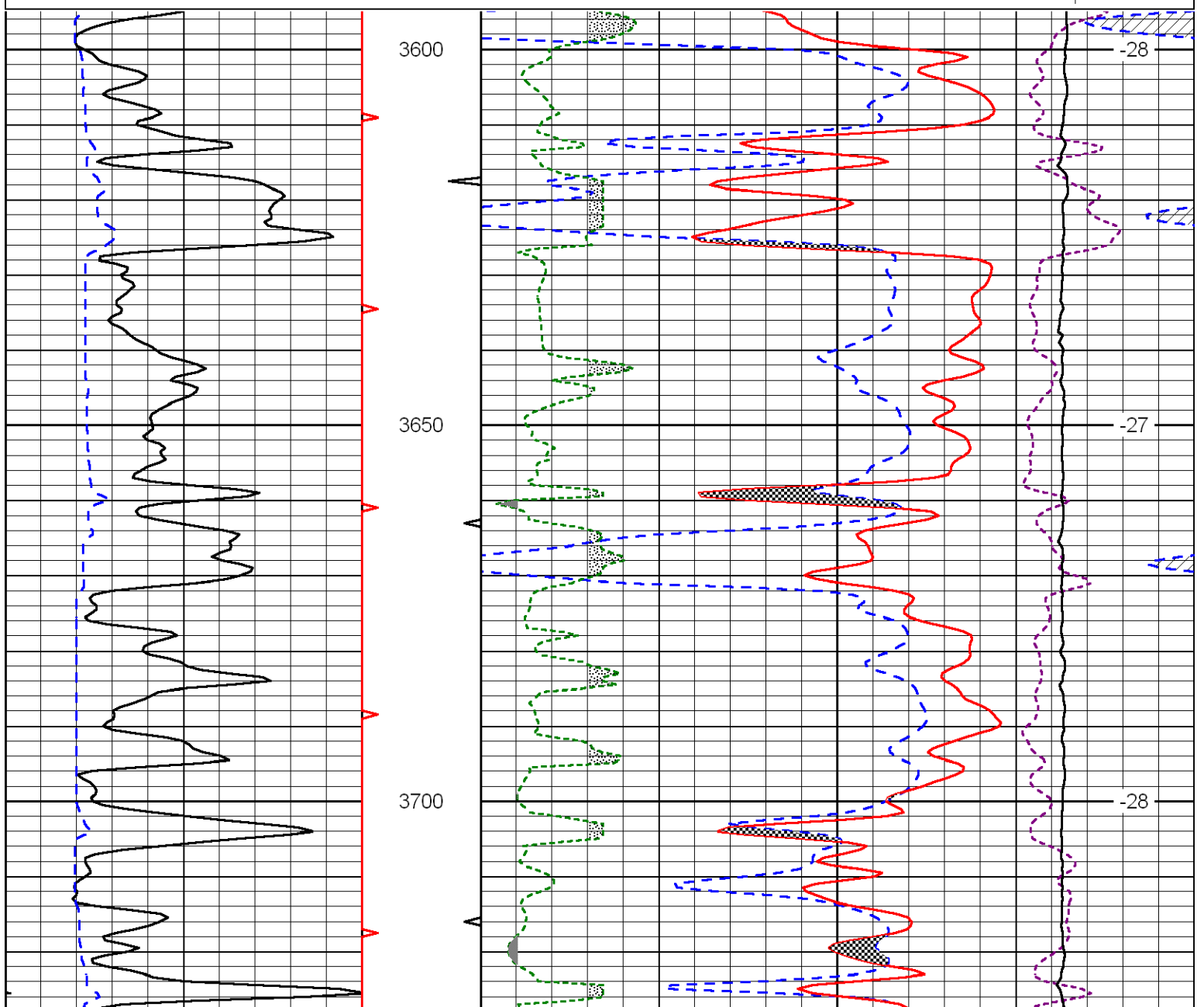
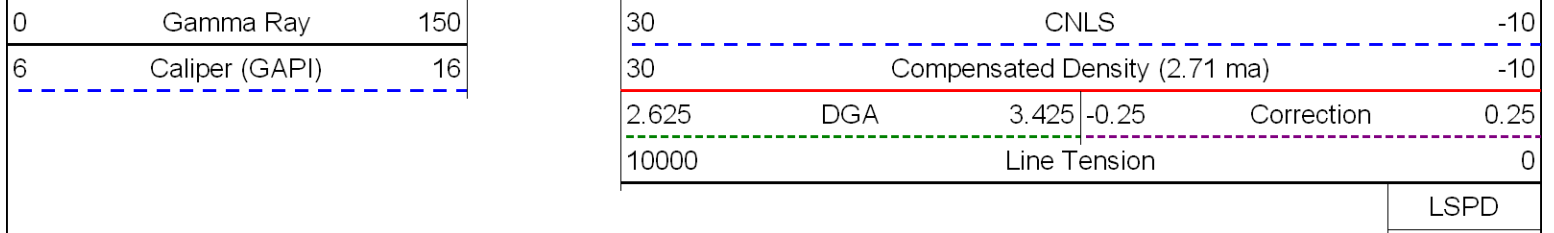
30	Compensated Density		-10
2	Bulk Density		3
15000	Line Tension		0
2.625	DGA	3.425	-0.25
Correction			0.25
LSPD			

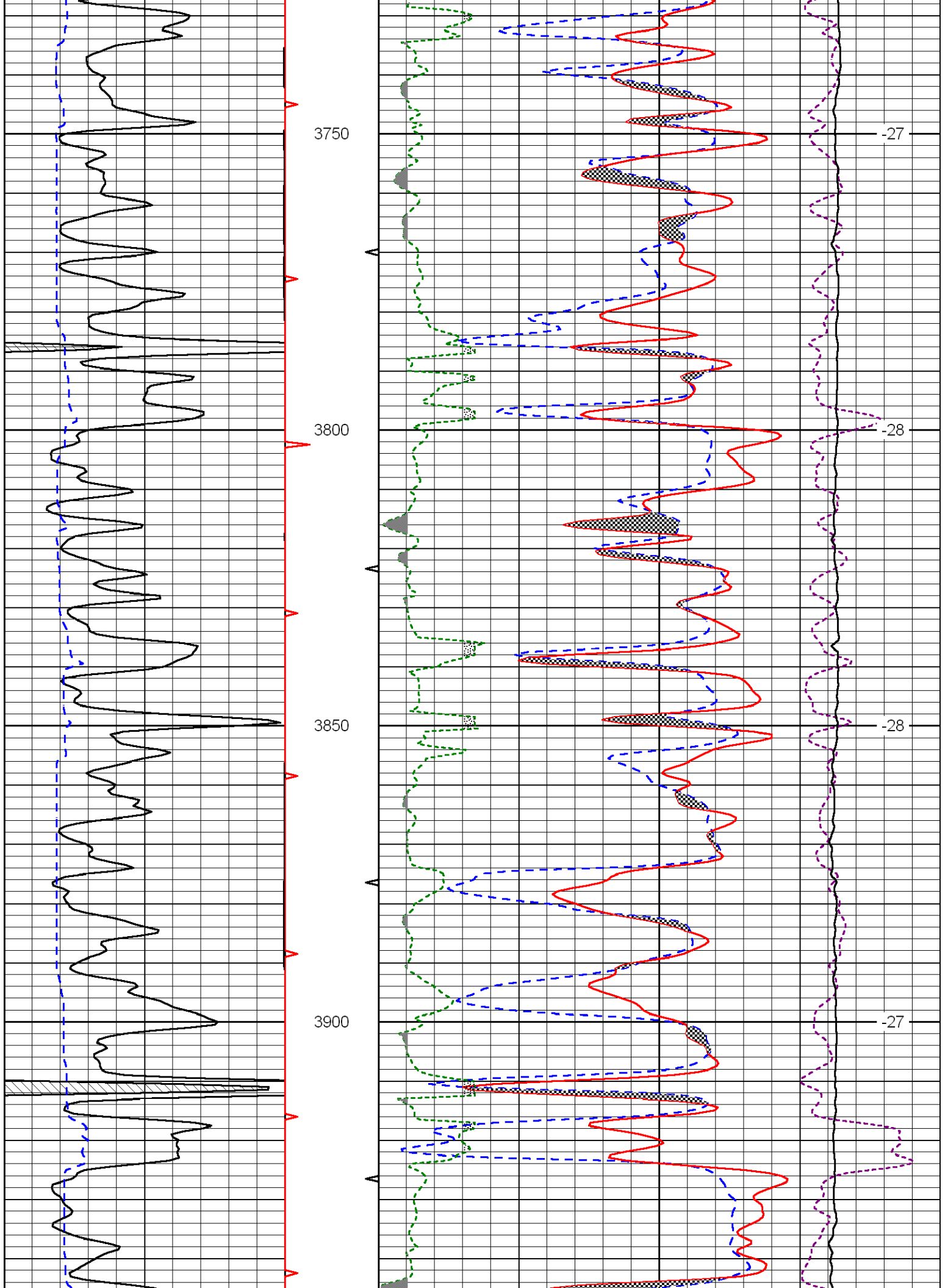


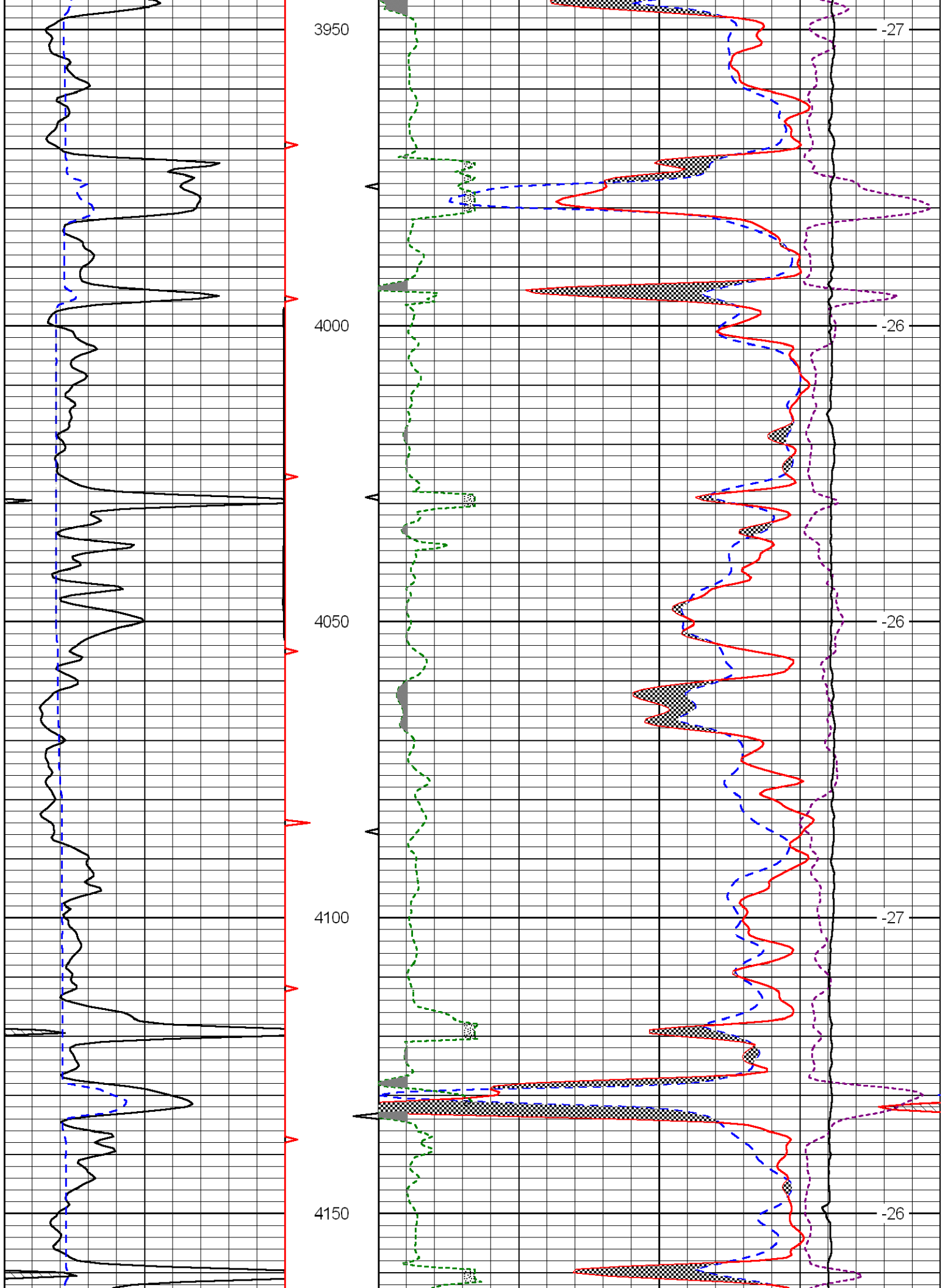


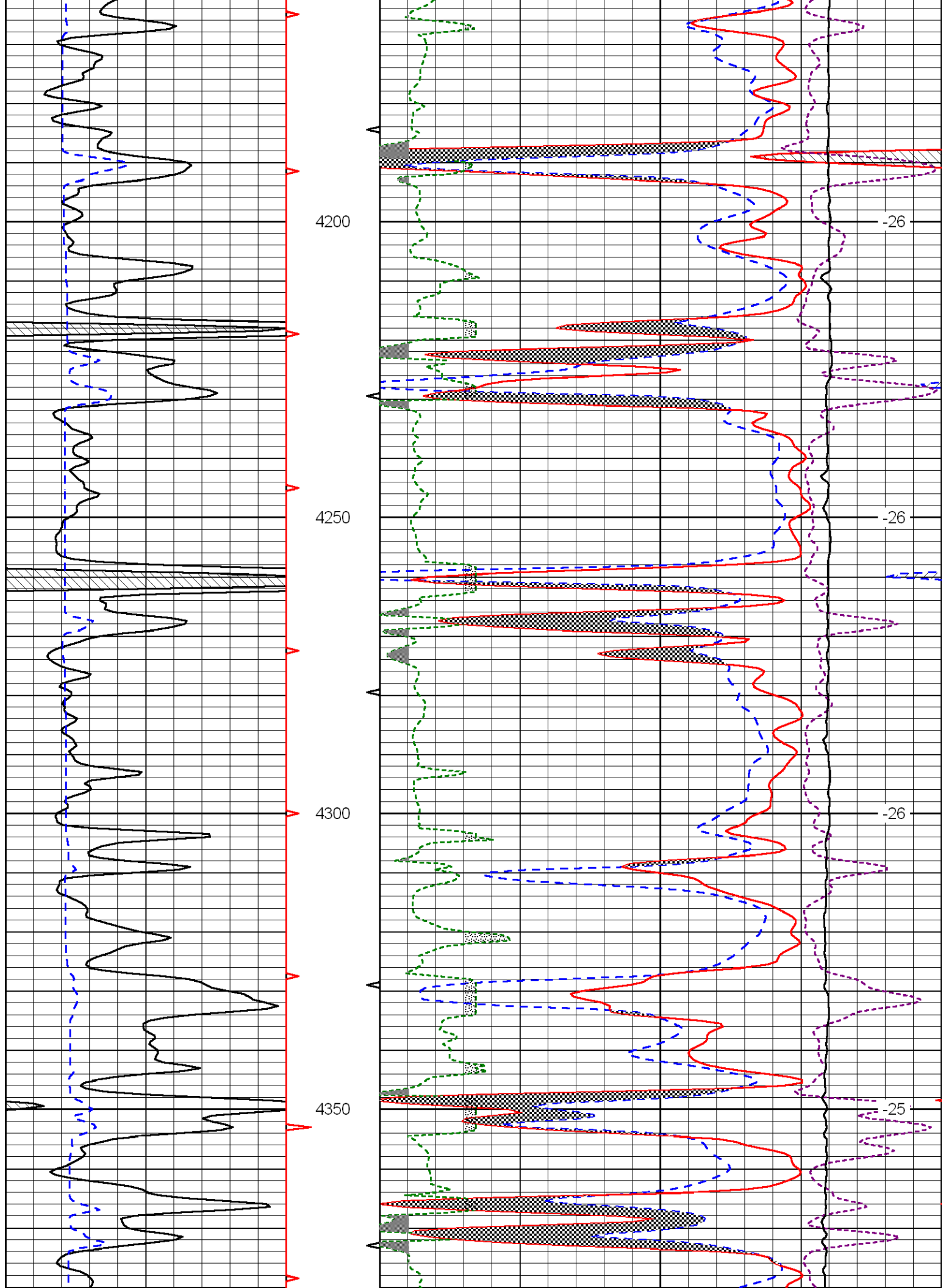


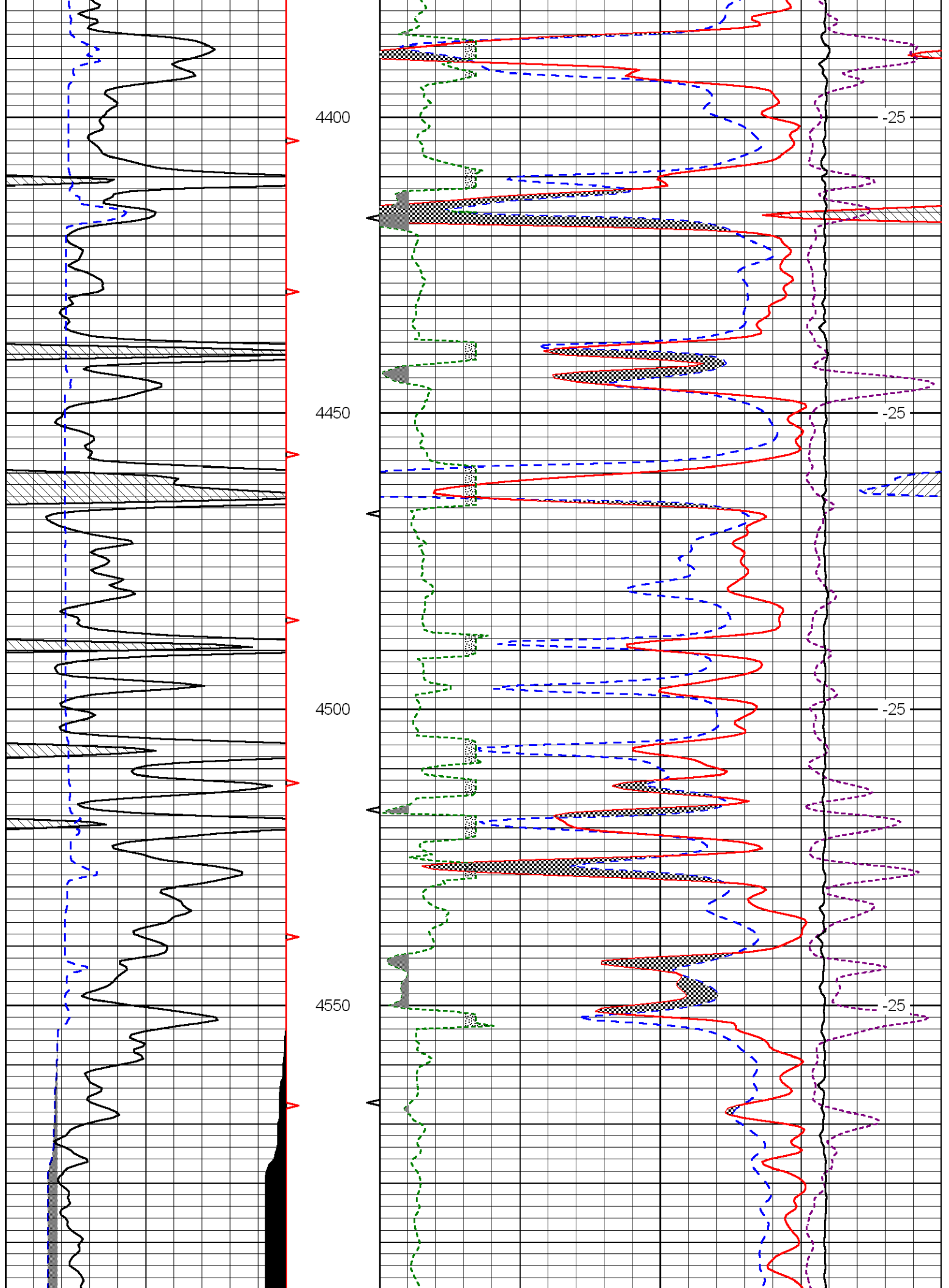
Database File: laron\_072112hd.db  
 Dataset Pathname: dil/larstack  
 Presentation Format: cndlspec  
 Dataset Creation: Sat Jul 21 10:10:25 2012  
 Charted by: Depth in Feet scaled 1:240



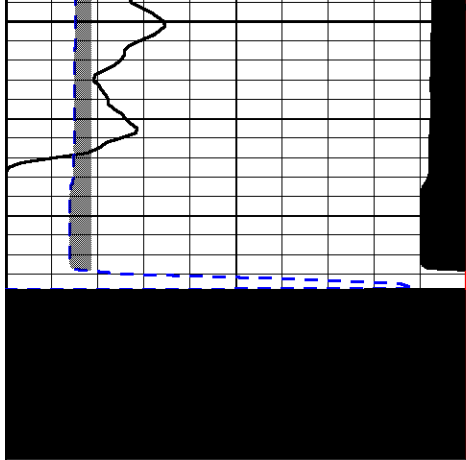




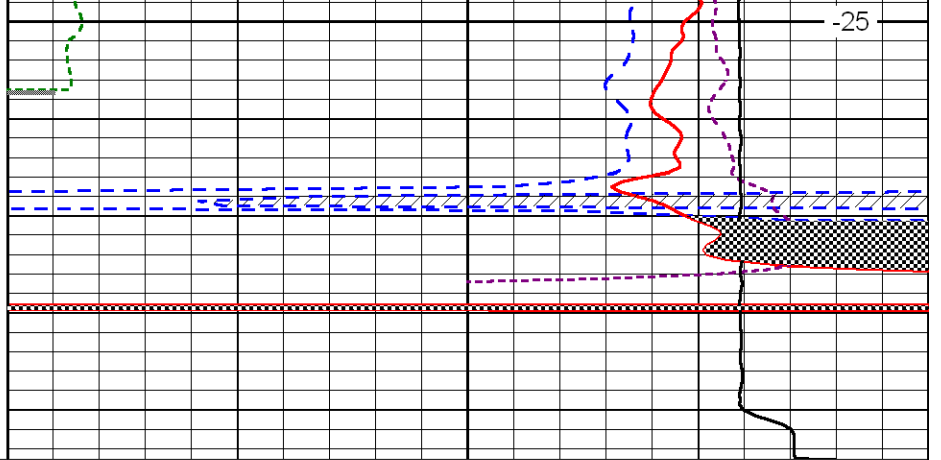








4600



-25

0	Gamma Ray	150
6	Caliper (GAPI)	16

30	CNLS			-10	
30	Compensated Density (2.71 ma)			-10	
2.625	DGA	3.425	-0.25	Correction	0.25
10000	Line Tension			0	

LSPD