



Microresistivity Log

15-101-22390-00-00

API No.

Company **Larson Engineering, Inc.**

Well **Shirley #2-10**

Field **Wildcat**

County **Lane** State **Kansas**

Location **698' FSL & 445' FEL**

Sec: **10** Twp: **18S** Rge: **30W**

Other Services
CNL/CDL
DIL

Elevation

Permanent Datum **Ground Level** Elevation **2863**

Log Measured From **Kelly Bushing** **7** Ft. Above Perm. Datum

Drilling Measured From **Kelly Bushing**

K.B. **2870**

D.F. **2863**

G.L. **2863**

Date **7/21/2012**

Run Number **Two**

Depth Driller **4640**

Depth Logger **4640**

Bottom Logged Interval **4639**

Top Log Interval **3600**

Casing Driller **8.625 @ 262**

Casing Logger **258**

Bit Size **7.875**

Type Fluid in Hole **Chemical**

Salinity, ppm CL **2500**

Density / Viscosity **9.2** **53**

pH / Fluid Loss **11.0** **7.2**

Source of Sample **Flowline**

Rm @ Meas. Temp **1.20 @ 65**

Rmf @ Meas. Temp **0.90 @ 65**

Rmc @ Meas. Temp **1.62 @ 65**

Source of Rmf / Rmc **Charts**

Rm @ BHT **0.63 @ 124**

Operating Rig Time **4 Hours**

Max Rec. Temp. F **124**

Equipment Number **91**

Location **Hays**

Recorded By **D. Schmidt**

Witnessed By **Vern Schrag**

<<< Fold Here >>>

All interpretations are opinions based on inferences from electrical or other measurements and we cannot and do not guarantee the accuracy or correctness of any interpretation, and we shall not, except in the case of gross or willful negligence on our part, be liable or responsible for any loss, costs, damages, or expenses incurred or sustained by anyone resulting from any interpretation made by any of our officers, agents or employees. These interpretations are also subject to our general terms and conditions set out in our current Price Schedule.

Comments

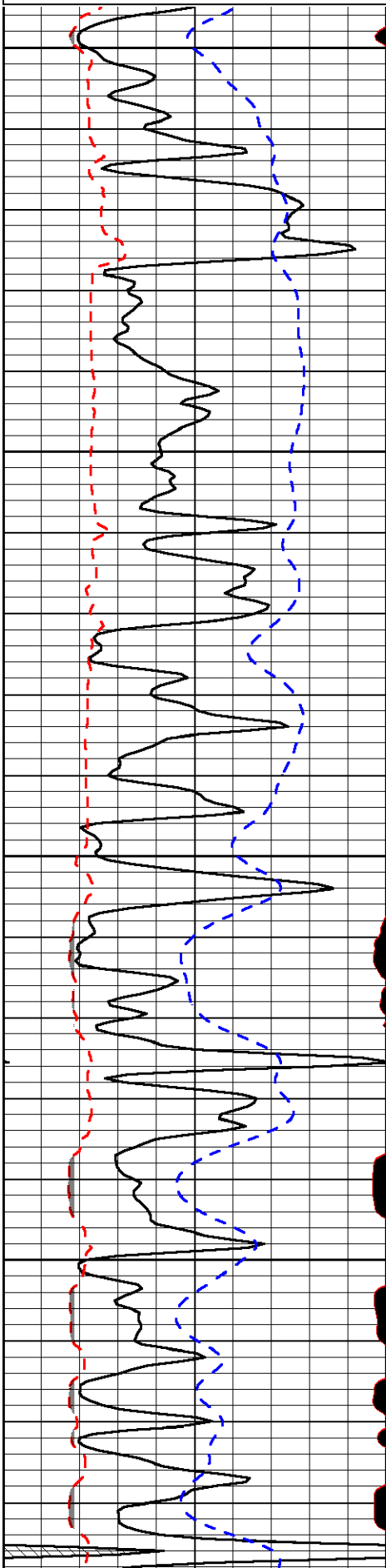
Thank you for using Log-Tech, Inc.
(785) 625-3858

Dighton,
8 W to Dodge Rd, 1 1/8 N,
W into

Database File: larson_072112hd.db
Dataset Pathname: dil/larstack
Presentation Format: micro
Dataset Creation: Sat Jul 21 10:10:25 2012
Charted by: Depth in Feet scaled 1:240

0	Gamma Ray	150
6	MCAL (GAPI)	16
2.875	Mud Cake (GAPI)	7.875
-200	SP	0

0	Micro Inverse 1 X 1	40
0	Micro Normal 2"	40
10000	Line Weight	0
		LSPD

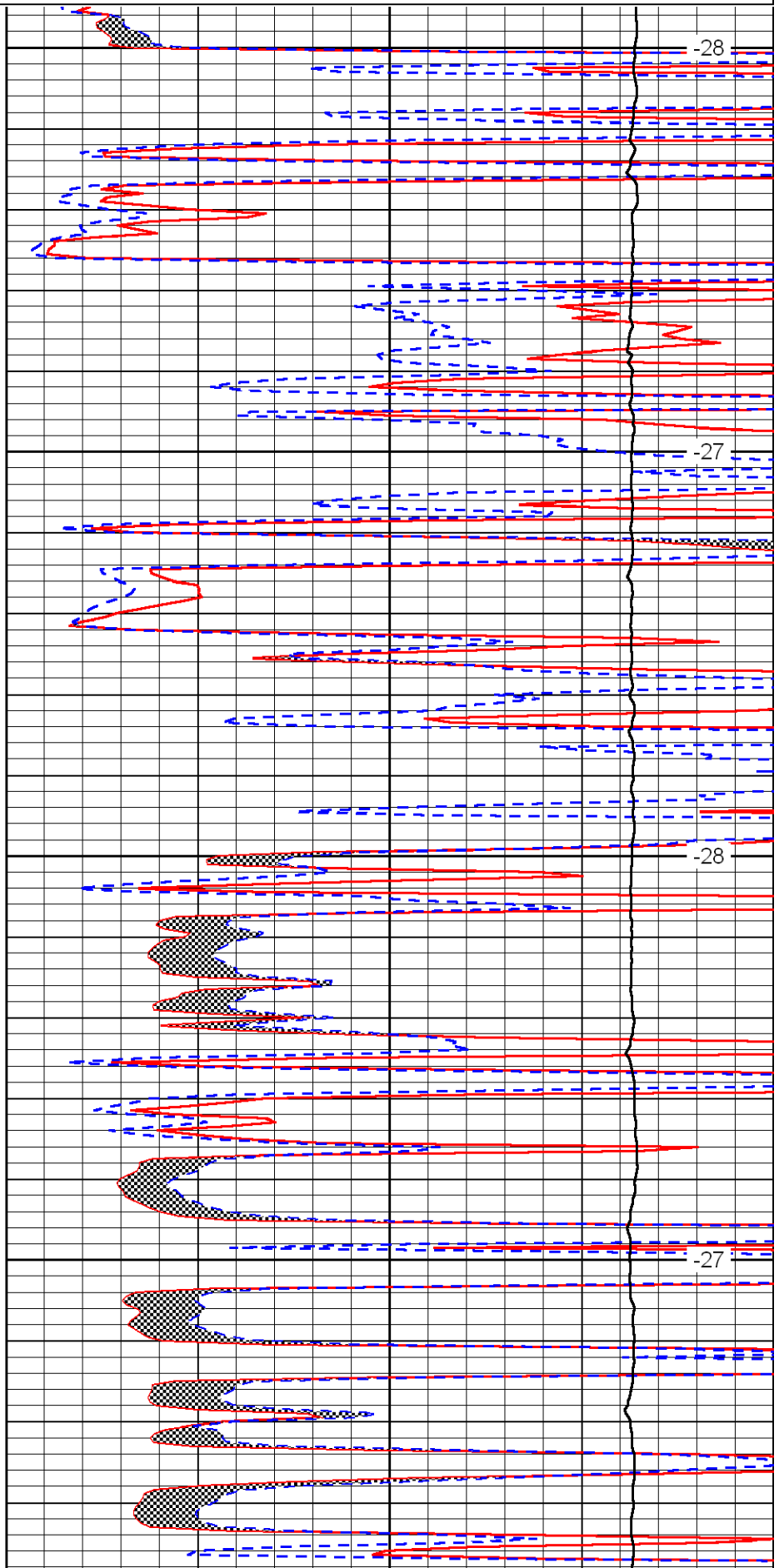


3600

3650

3700

3750

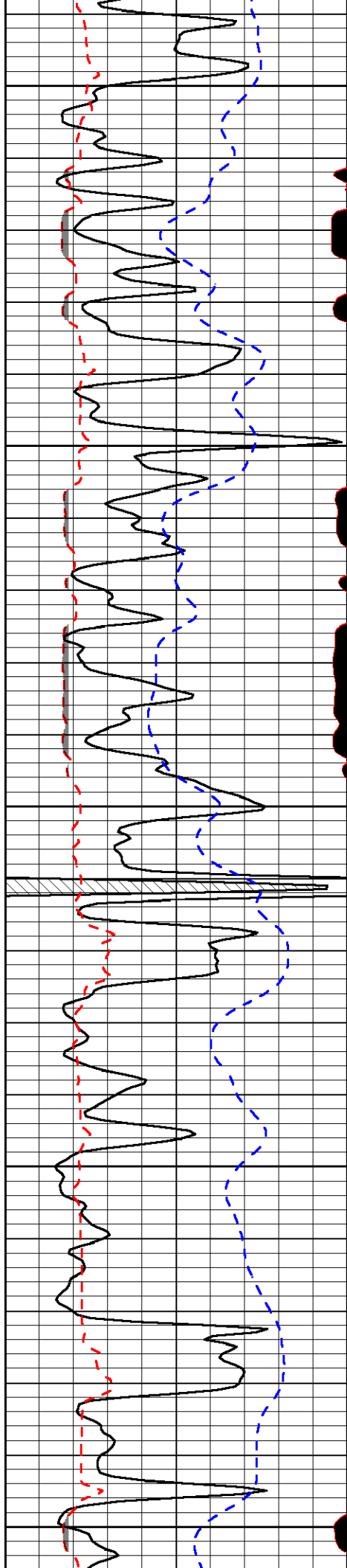


-28

-27

-28

-27



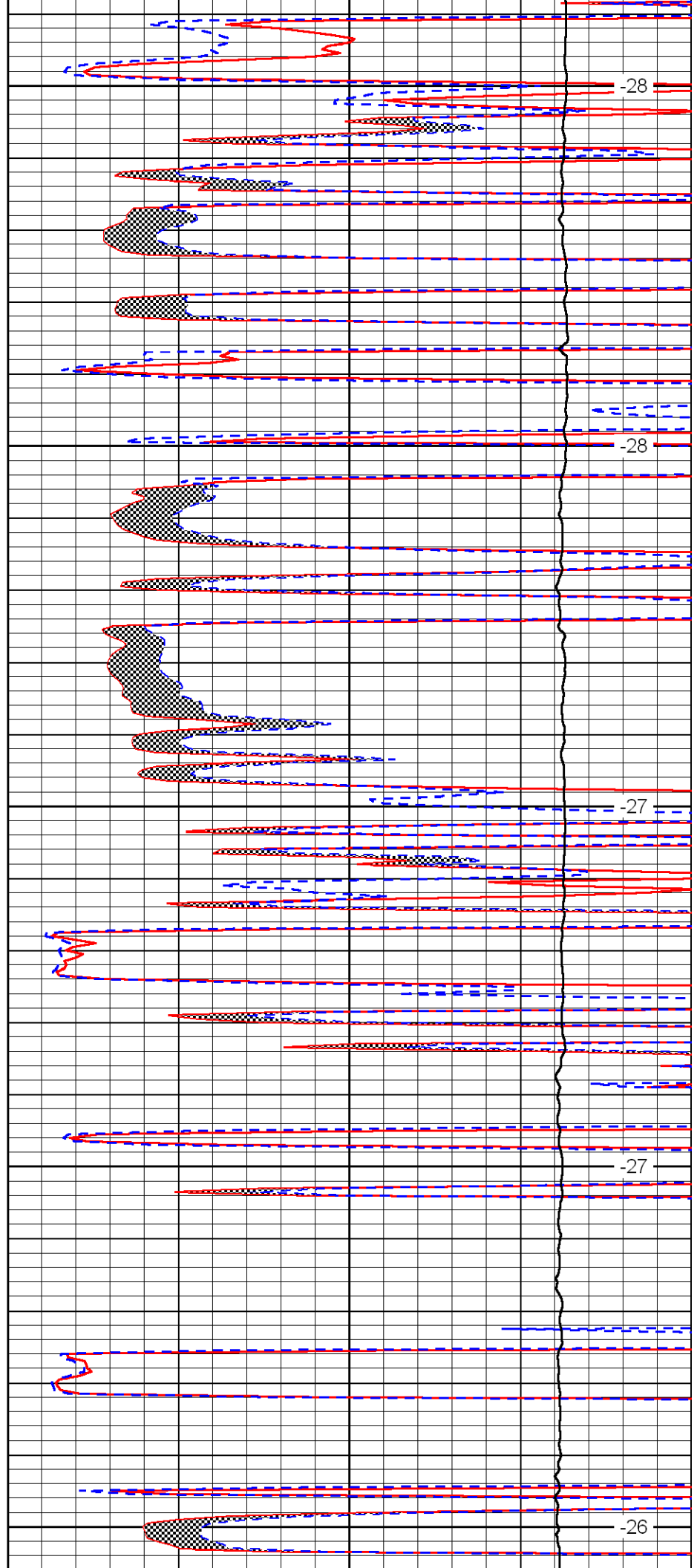
3800

3850

3900

3950

4000



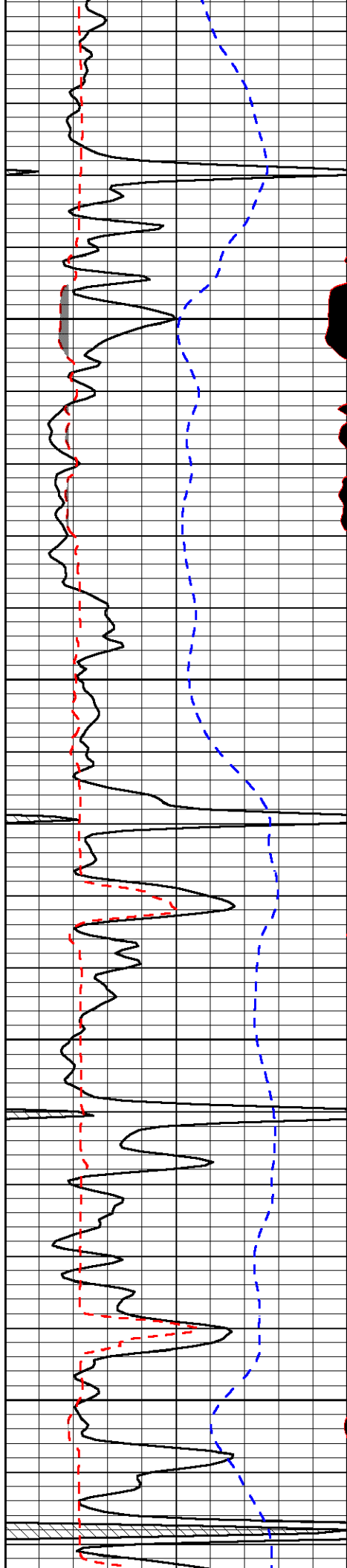
-28

-28

-27

-27

-26

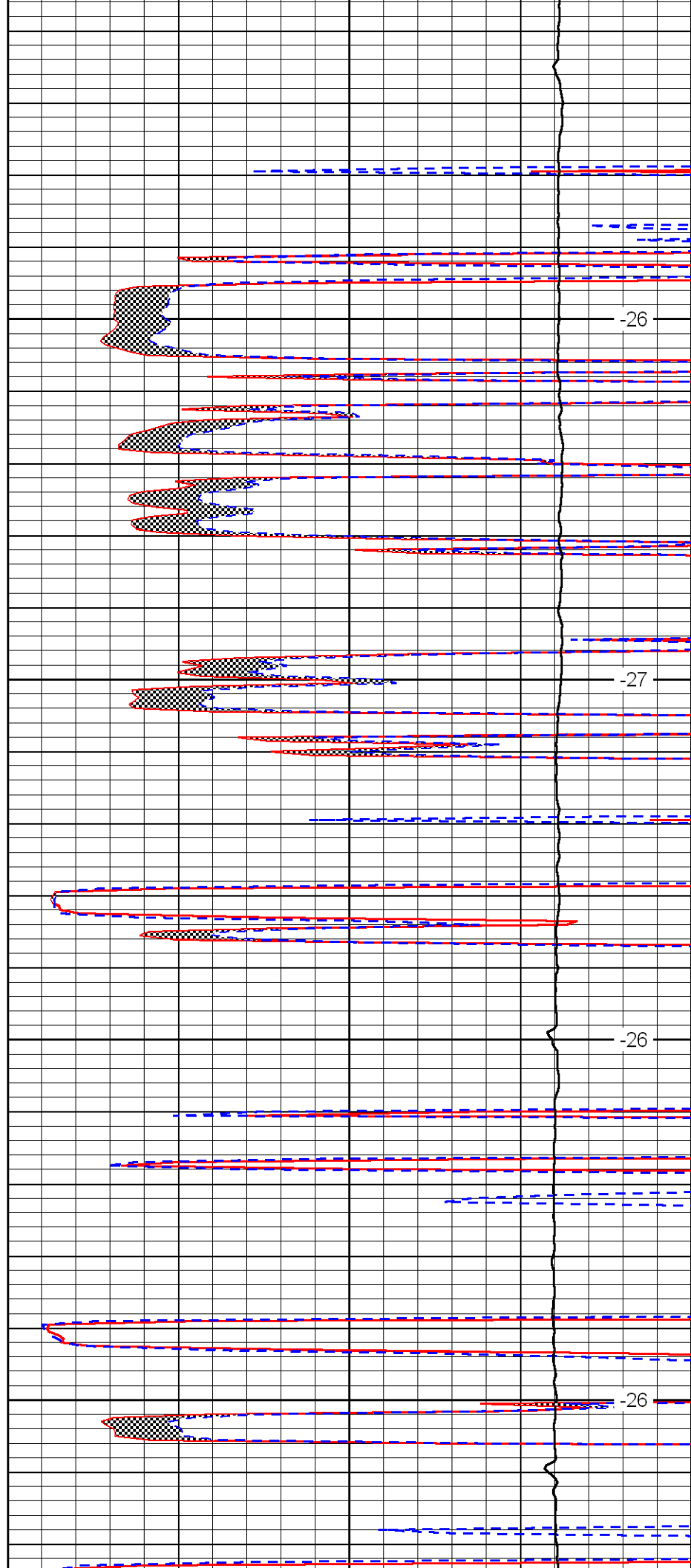


4050

4100

4150

4200

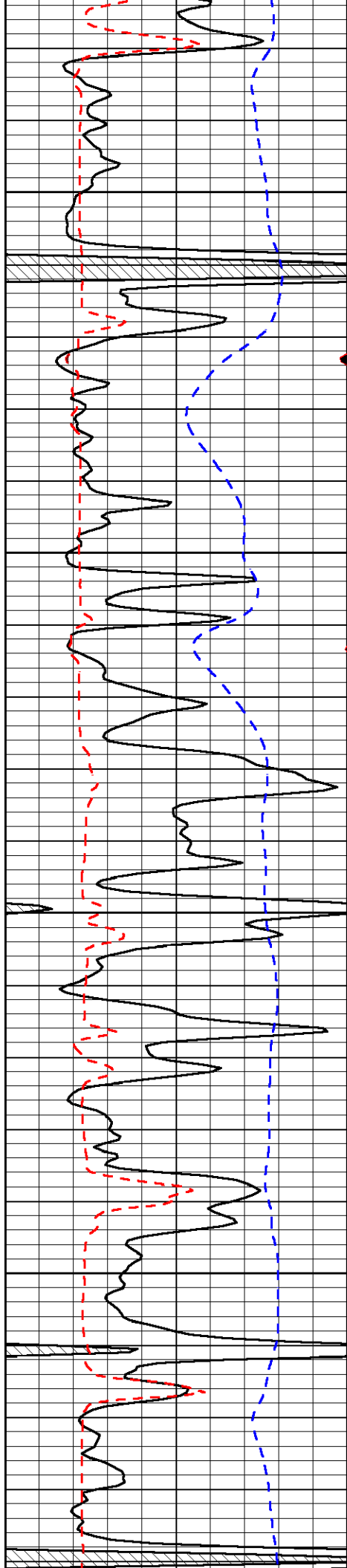


-26

-27

-26

-26

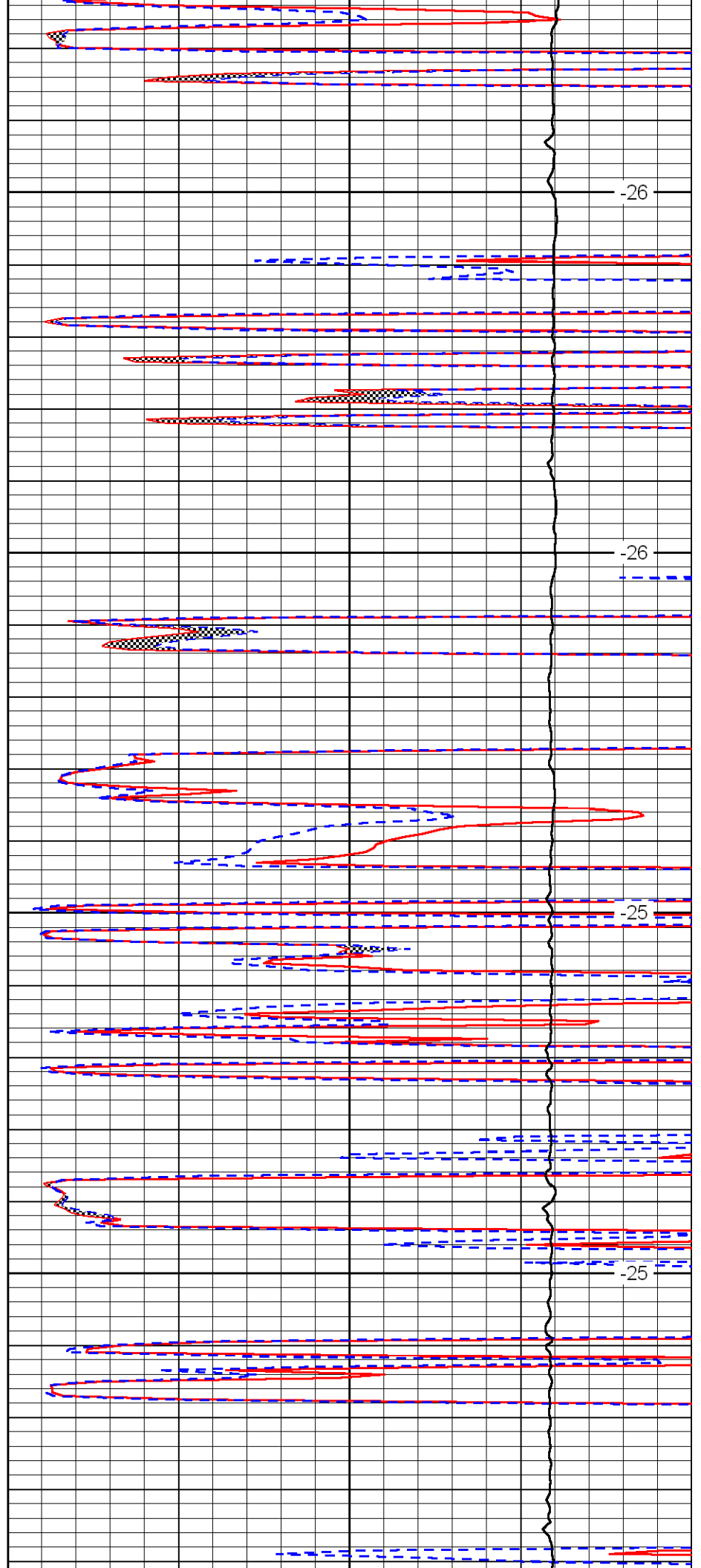


4250

4300

4350

4400

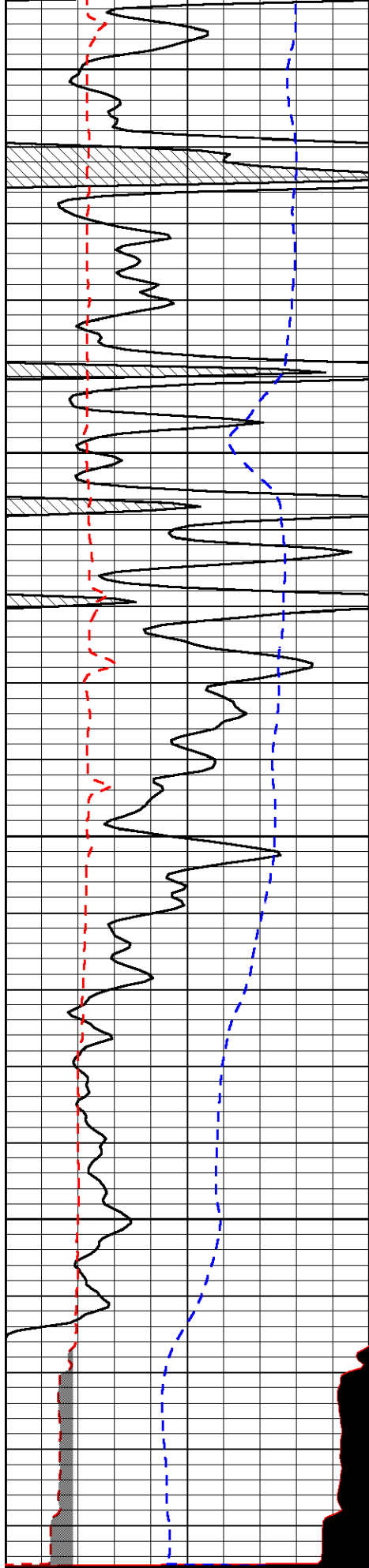


-26

-26

-25

-25



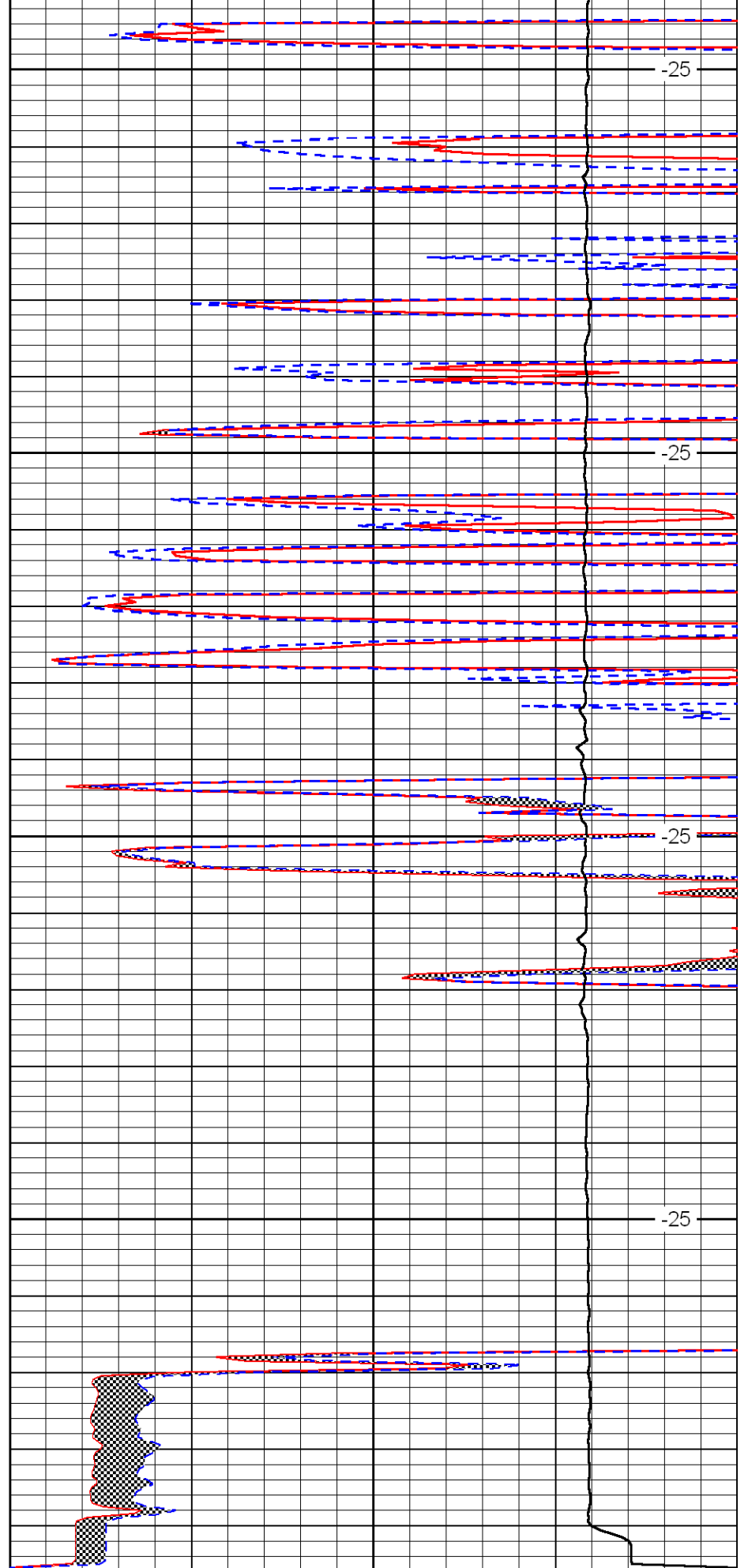
4450

4500

4550

4600

0	Gamma Ray	150
6	MCAL (GAPI)	16
2.875	Mud Cake (GAPI)	7.875



-25

-25

-25

-25

0	Micro Inverse 1 X 1	40
0	Micro Normal 2''	40
10000	Line Weight	0

-200 SP 0

LSPD