



(785) 625-3858

Sonic Cement
Bond Log

15-101-22390-00-00

API No.

Company Larson Engineering, Inc.

Well Shirley No. 2-10

Field Wildcat

County Lane State Kansas

Location 698' FSL & 445' FEL

Sec: 10 Twp: 18S Rge: 30W

Permanent Datum Ground Level Elevation 2863

Log Measured From Kelly Bushing 7 Ft. Above Perm. Datum

Drilling Measured From Kelly Bushing

Other Services
Mast Trailer
Elevation
K.B. 2870
D.F. 2863
G.L. 2863

Run Number

One

Date Survey

7/27/2012

Date Cementing

7/21/2012

Type Cementing Operation

Primary

Depth Driller

4640

Depth Logger

4593

Logged Interval

4591 to 3450

Casing Driller

5.5 @ T.D.

Float Collar -- D.V. Tool

2148 @

Squeeze Depth

|||||

Amount & Type Cement

|||||

Amount & Type Admix

|||||

Type Fluid In Hole

Water

Fluid Level

Full

Salinity PPM CL

|||||

Weight lb/gal -- Vis.

|||||

Approx. Logged Cement Top

3640

Calculated Cement Top

|||||

Max. Hole Temperature

124

Tool No.

D-1

Spacing Recorded

3-5

Equipment -- Location

72 Hays

Recorded By

K. Ladrigan

Witnessed By

Tom Larson

<<< Fold Here >>>

All interpretations are opinions based on inferences from electrical or other measurements and we cannot and do not guarantee the accuracy or correctness of any interpretation, and we shall not, except in the case of gross or willful negligence on our part, be liable or responsible for any loss, costs, damages, or expenses incurred or sustained by anyone resulting from any interpretation made by any of our officers, agents or employees. These interpretations are also subject to our general terms and conditions set out in our current Price Schedule.

Comments

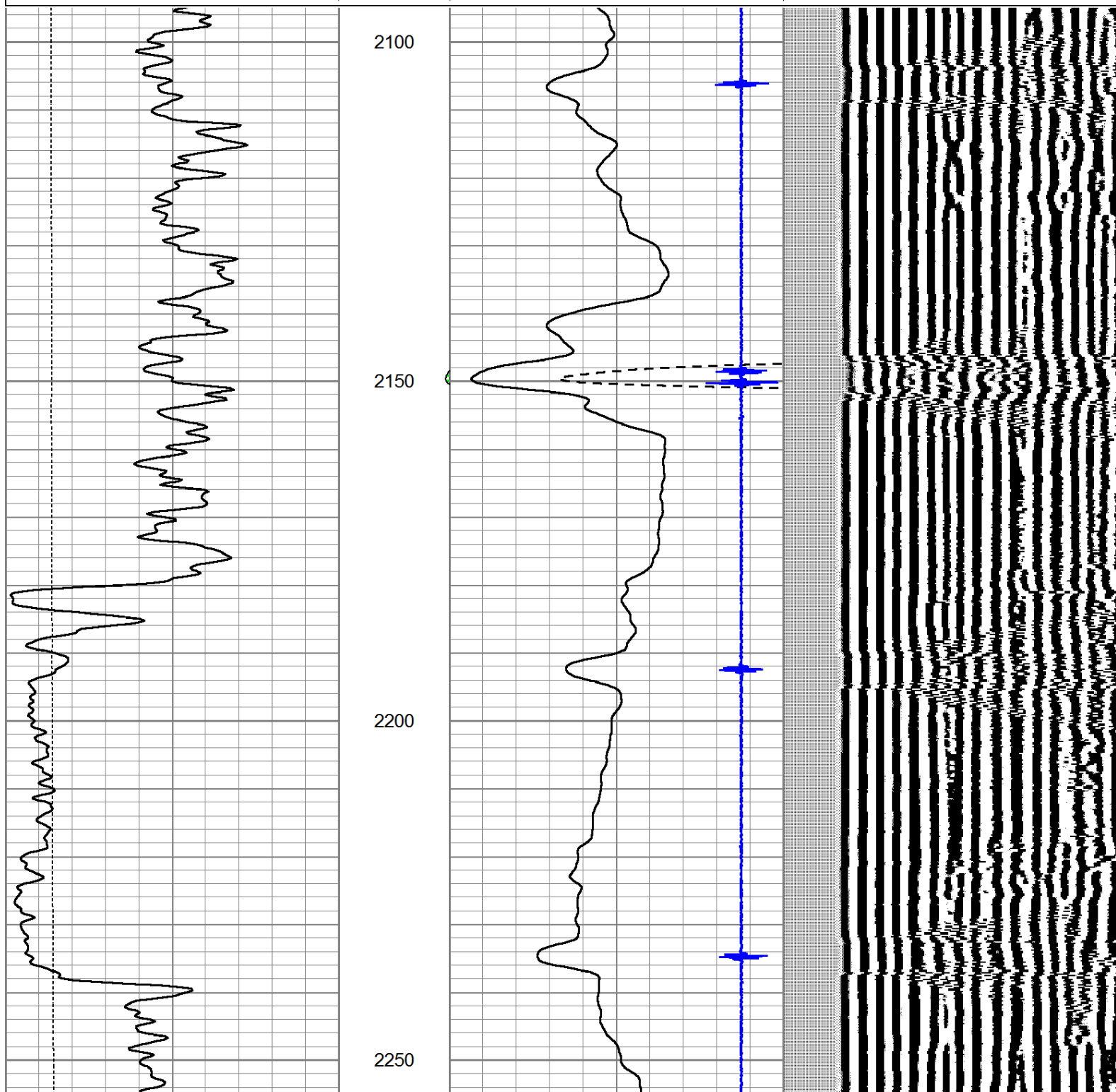
Thank you for using Log-Tech (785) 625-3858
Dighton, KS., 8 West to Dodge Road, 1.125 North
West Into.



Port Collar @ 2148

Database File: laron-shirley2-10.db
 Dataset Pathname: Shirley2-/grcbl/pass6
 Presentation Format: cldig
 Dataset Creation: Fri Jul 27 10:41:42 2012 by Log SCH 111116
 Charted by: Depth in Feet scaled 1:240

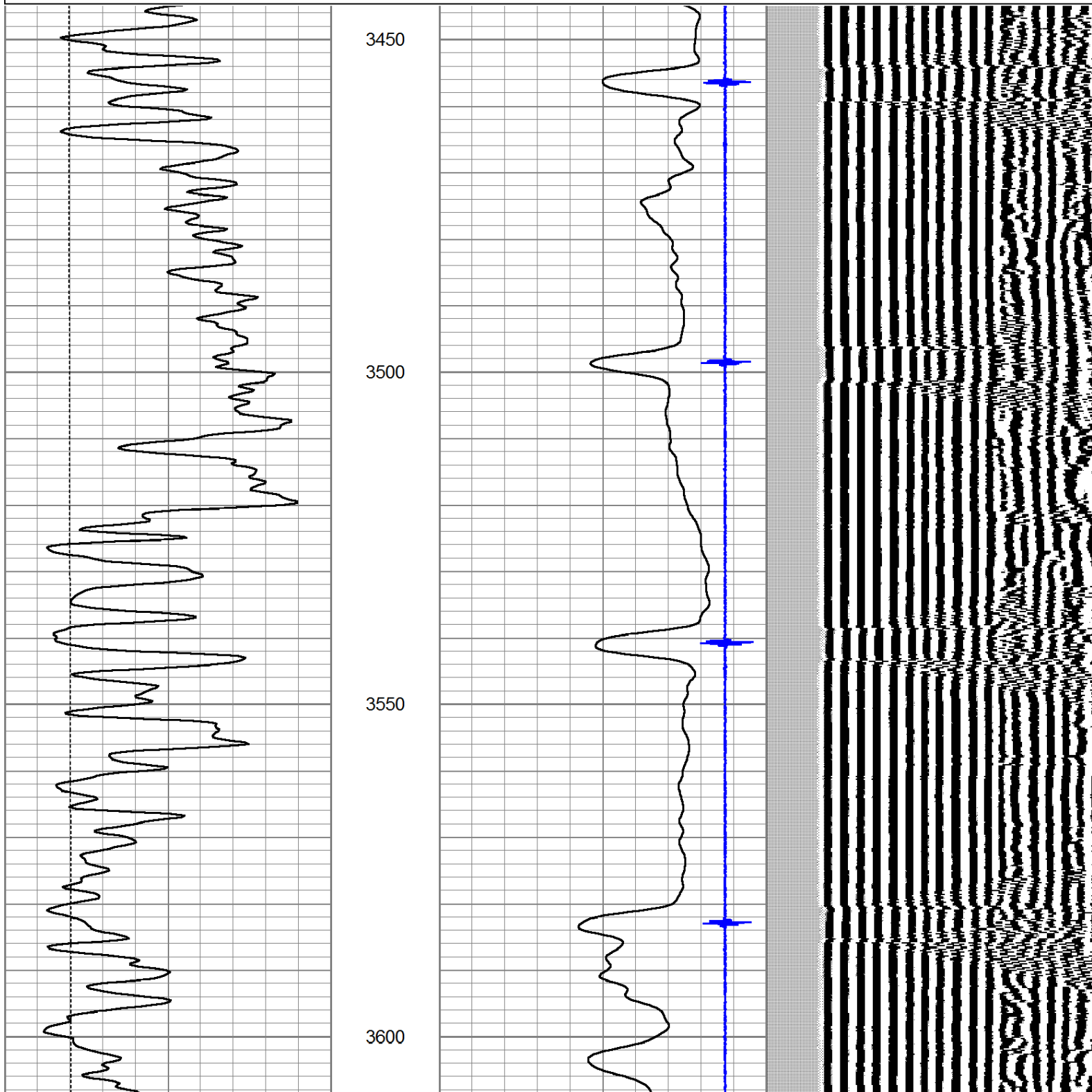
0	GR (GAPI)	150	AMP3	0	Amplitude (mV)	100	200	Variable Density	1200
0	LTEN (lb)	5000	(mV)	0	Amplified Amplitude (mV)	20			
			-100 10	7	Collar Locator	-1			

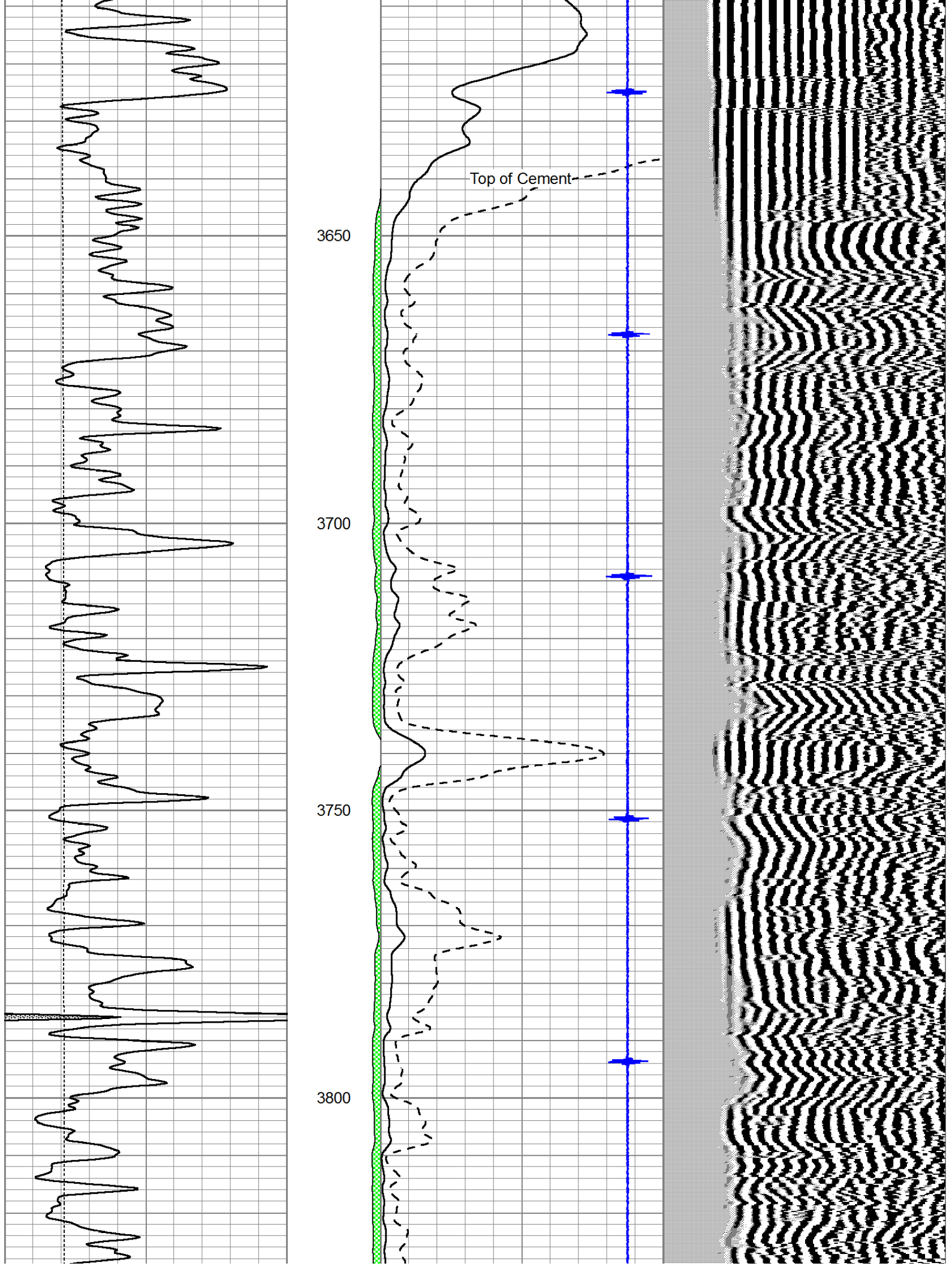


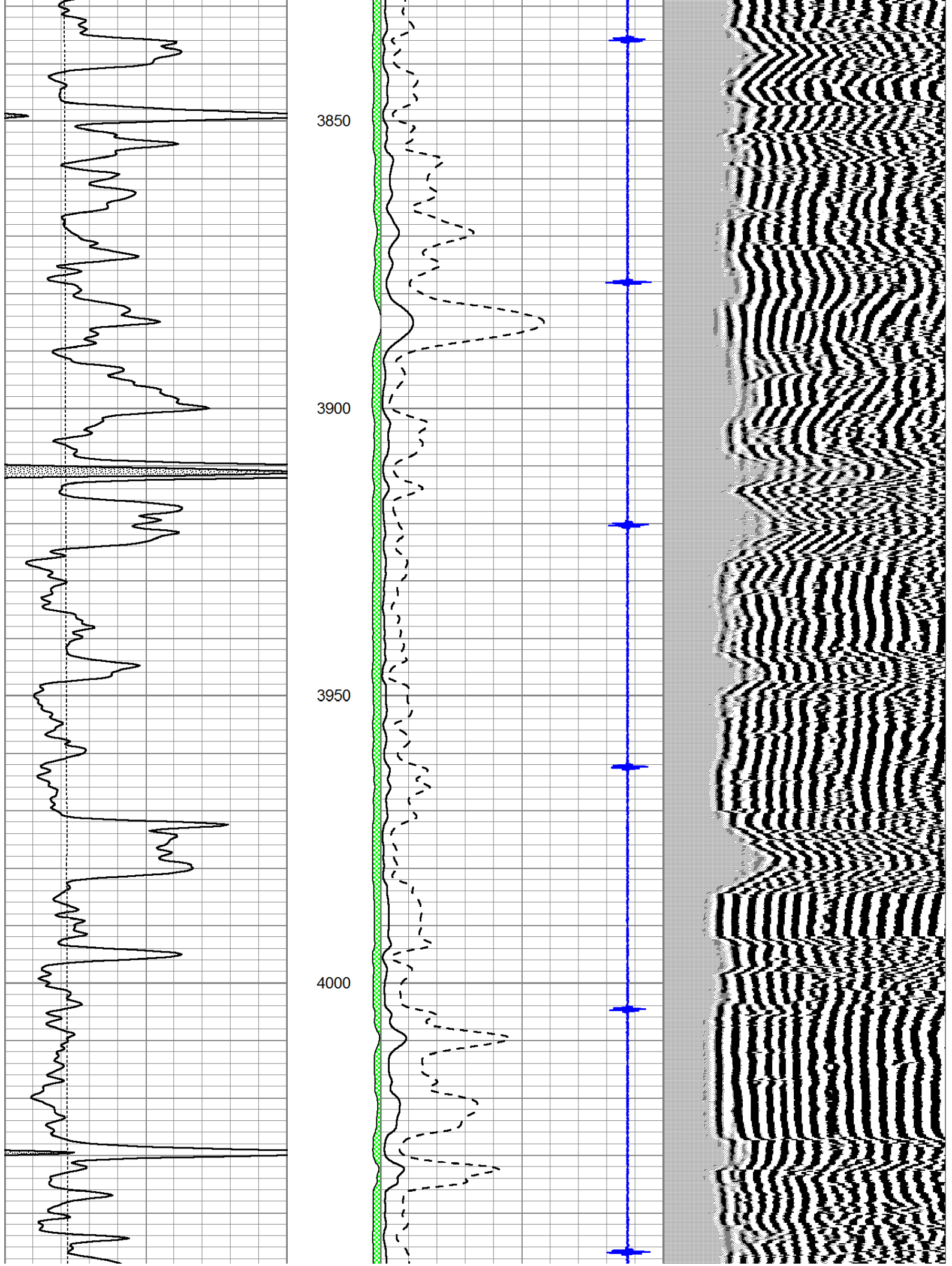
0	GR (GAPI)	150	AMP3	0	Amplitude (mV)	100	200	Variable Density	1200
0	LTEN (lb)	5000	(mV)	0	Amplified Amplitude (mV)	20			
			-100 10	7	Collar Locator	-1			

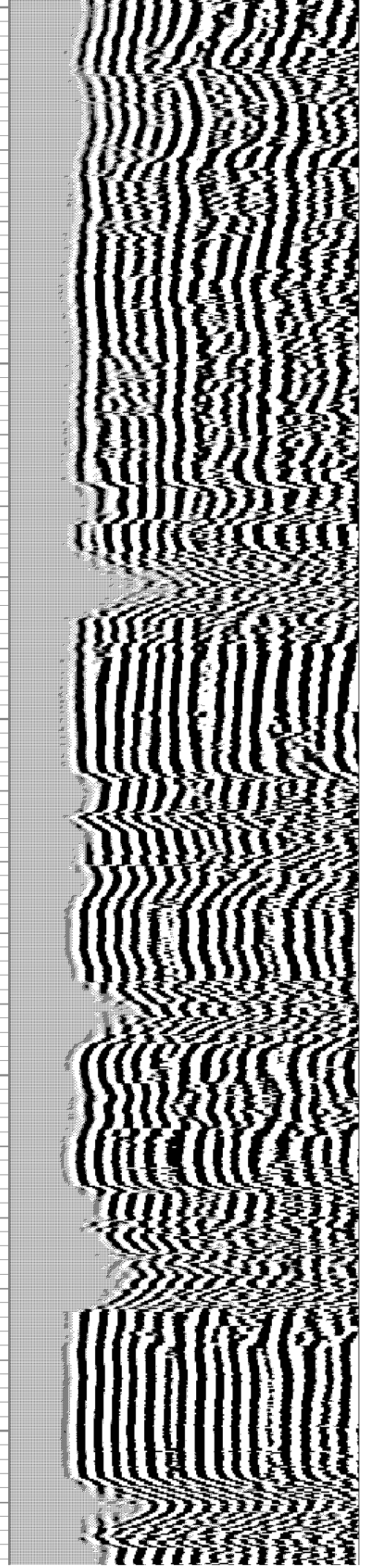
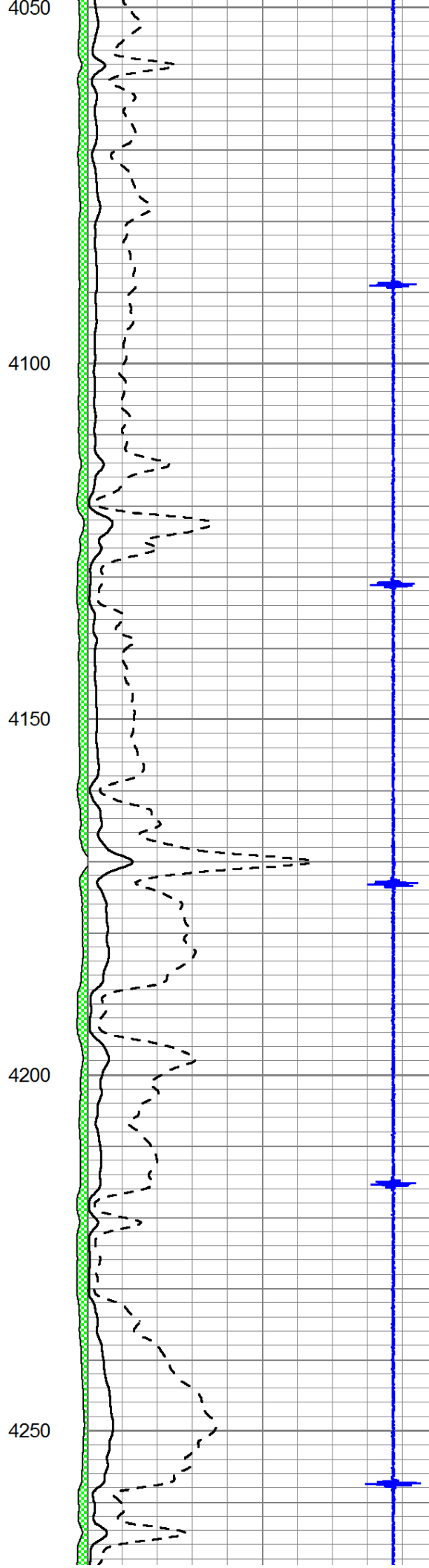
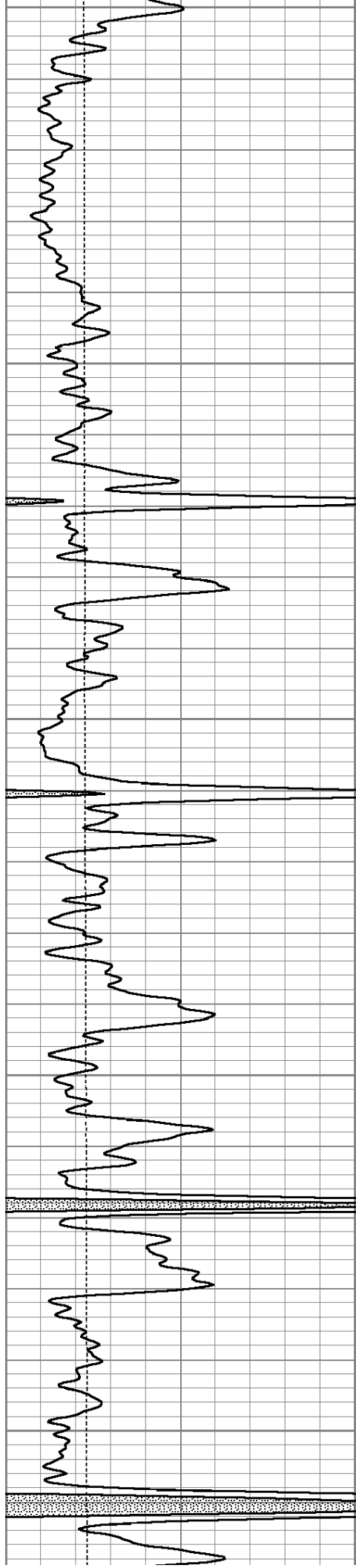
Database File: laron-shirley2-10.db
 Dataset Pathname: Shirley2-/grcbl/pass5
 Presentation Format: cldig
 Dataset Creation: Fri Jul 27 10:11:12 2012 by Log SCH 111116
 Charted by: Depth in Feet scaled 1:240

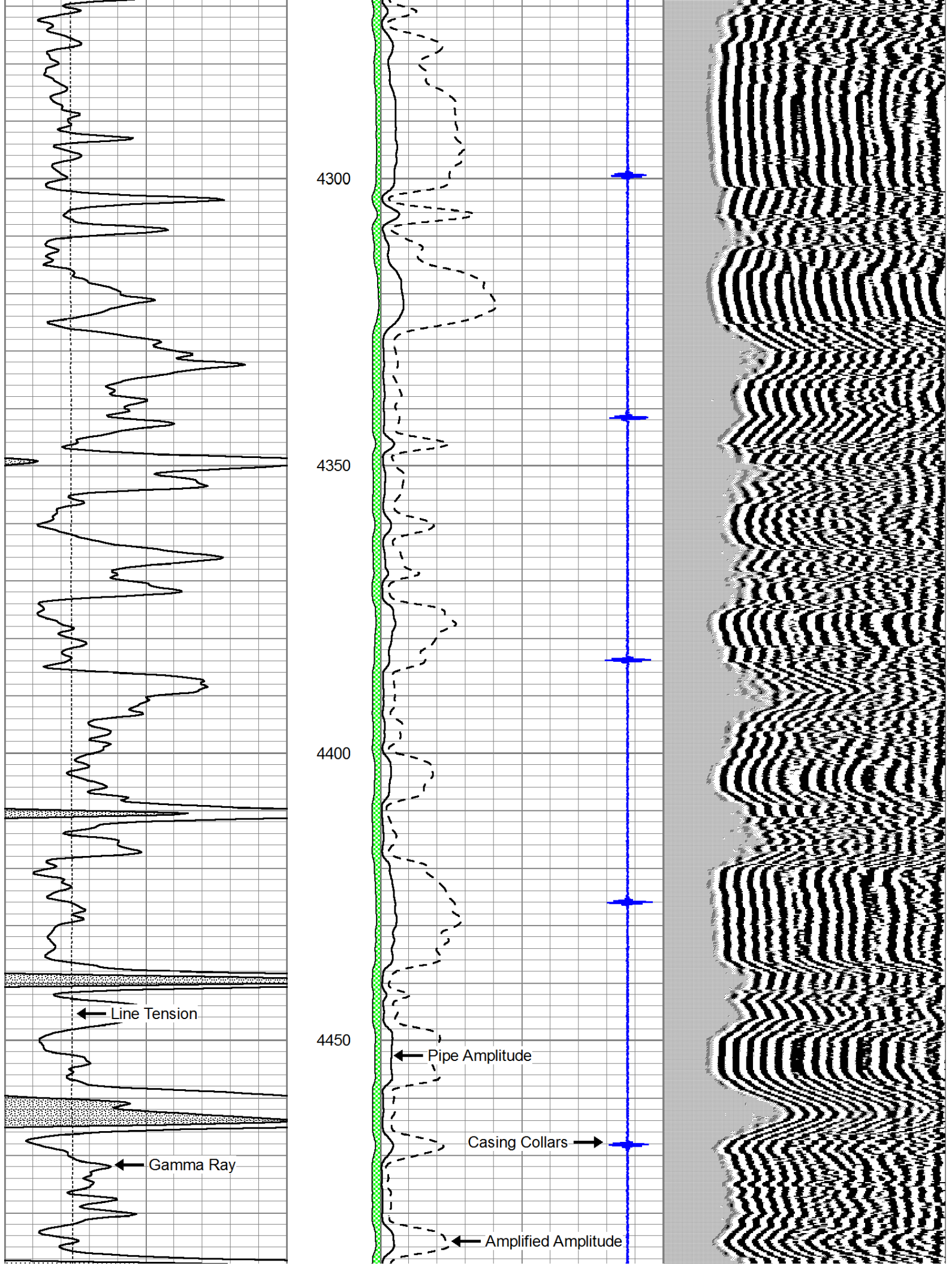
0	GR (GAPI)	150	AMP3	0	Amplitude (mV)	100	200	Variable Density	1200
0	LTEN (lb)	5000	(mV)	0	Amplified Amplitude (mV)	20			
			-100 10	7	Collar Locator	-1			

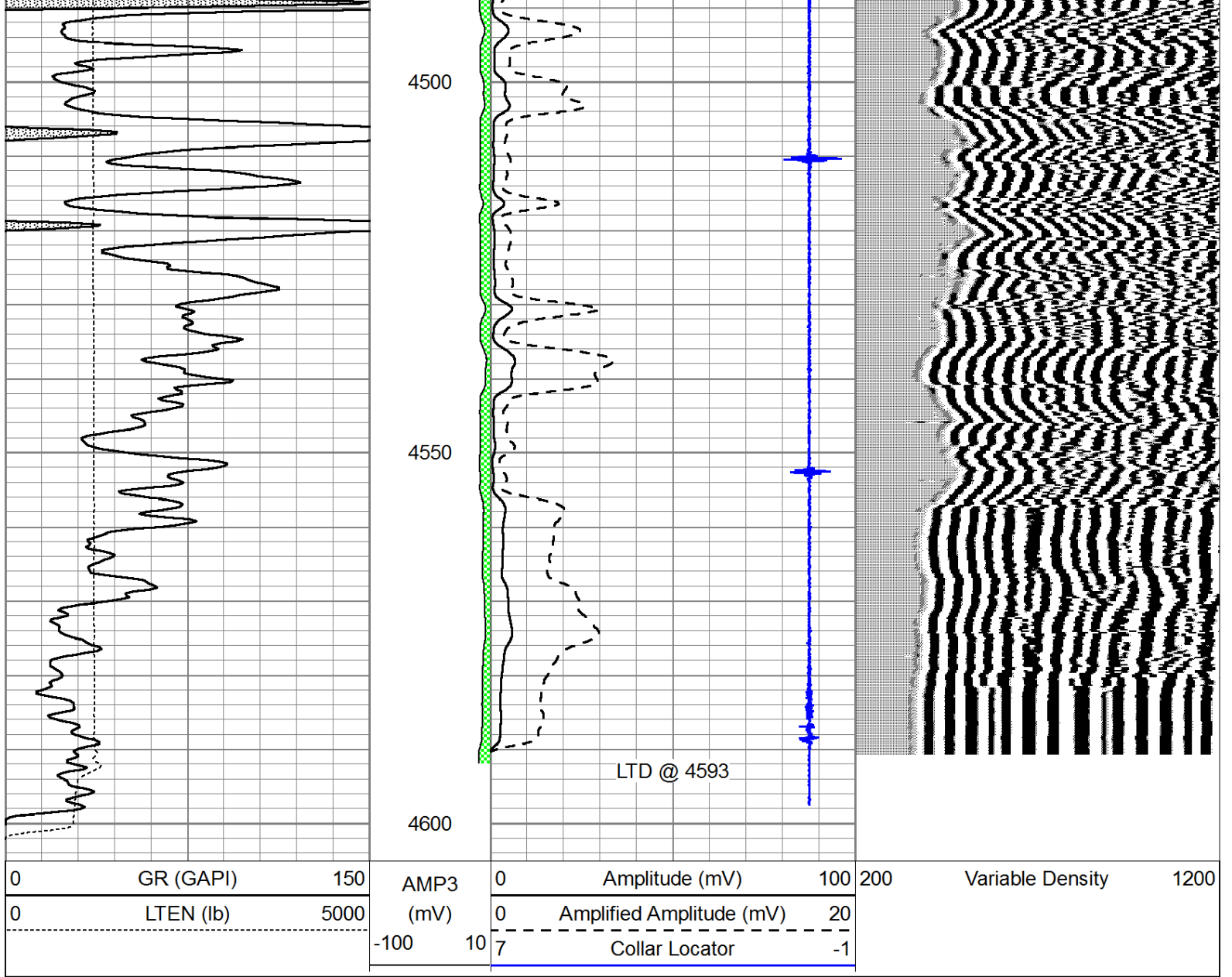












LOG-TECH

Repeat Section

Database File: laron-shirley2-10.db
 Dataset Pathname: Shirley2-/grcbl/pass4
 Presentation Format: cldig
 Dataset Creation: Fri Jul 27 10:06:35 2012 by Log SCH 11116
 Charted by: Depth in Feet scaled 1:240

