



Sector Bond / Gamma Ray
CCL Log

Ph. (785) 625-3858

15-171-20886-00-00

API No.

Company Landmark Resources Inc.

Well Frick No. 1-8

Field Wildcat

County Scott State Kansas

Location 1790' FNL & 860' FWL

Other Services

Sec: 8 Twp: 17 S Rge: 33 W

Elevation

Permanent Datum Ground Level Elevation 3081

Log Measured From Kelly Bushing 11 Ft. Above Perm. Datum

K.B. 3092
D.F.
G.L. 3081

Drilling Measured From Kelly Bushing

Run Number One

Date Survey 07/24/2012

Date Cementing 07/17/2012

Type Cementing Operation Primary

Depth Driller 4906

Depth Logger 4857

Logged Interval 4856 to 3100 2500 to 250

Casing Driller 4.5 @ TD @

Float Collar -- D.V. Tool // 2383

Squeeze Depth //

Amount & Type Cement //

Amount & Type Admix //

Type Fluid In Hole Water

Fluid Level Full

Salinity PPM CL //

Weight lb/gal -- Vis. //

Approx. Logged Cement Top 3298

Calculated Cement Top //

Max. Hole Temperature 125

Tool No. PRBT71

Spacing Recorded 3-5

Equipment -- Location 71 Hays

Recorded By Scott Clermont

Witnessed By Alan Walker

<<< Fold Here >>>

All interpretations are opinions based on inferences from electrical or other measurements and we cannot and do not guarantee the accuracy or correctness of any interpretation, and we shall not, except in the case of gross or willful negligence on our part, be liable or responsible for any loss, costs, damages, or expenses incurred or sustained by anyone resulting from any interpretation made by any of our officers, agents or employees. These interpretations are also subject to our general terms and conditions set out in our current Price Schedule.

Comments

Thank you for using Log-Tech, Inc.
(785) 625 3858

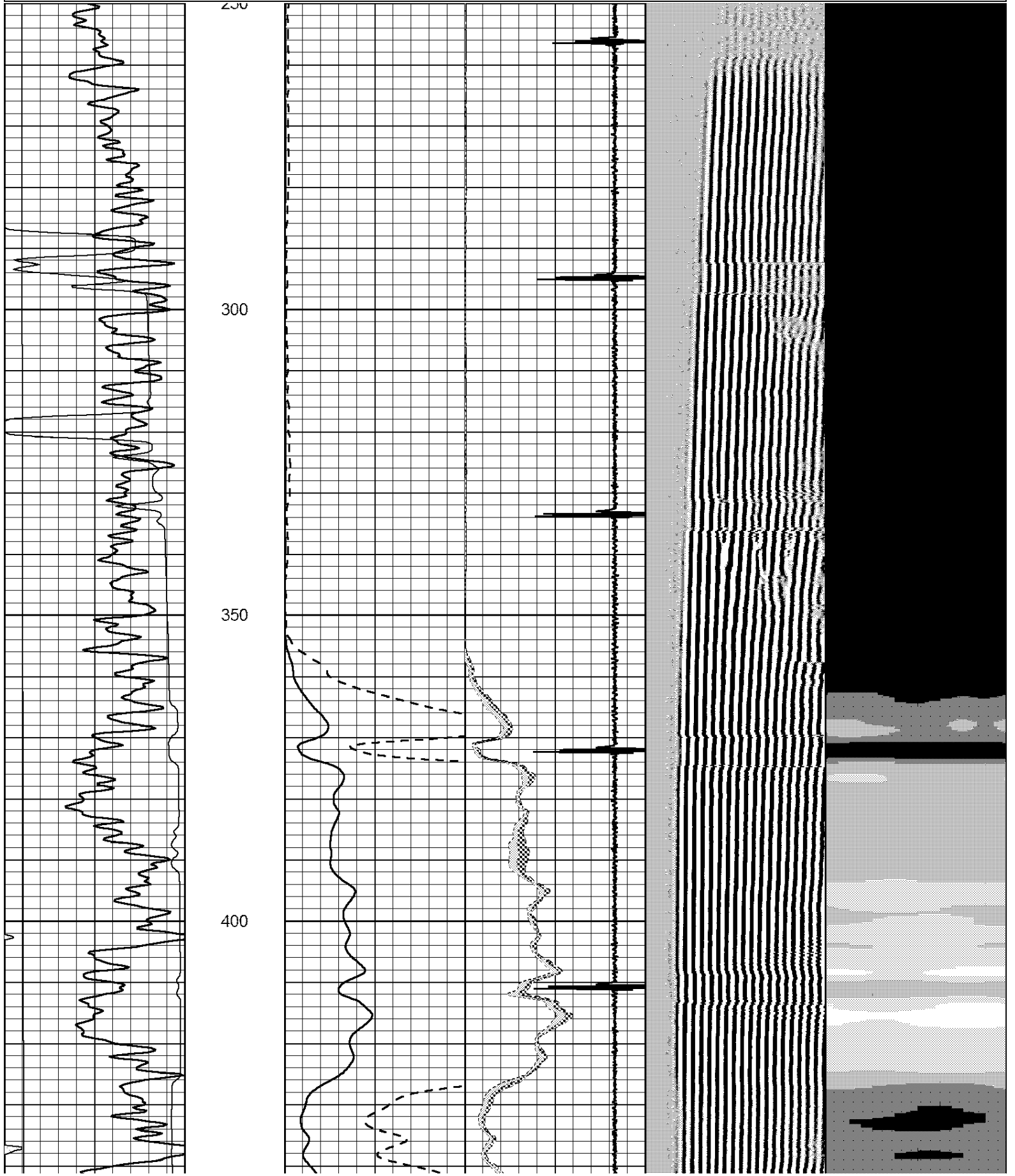
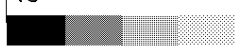
Hwy 4 & 83 Jct., 5 West, 3/4 South, 1/4 East, North Into

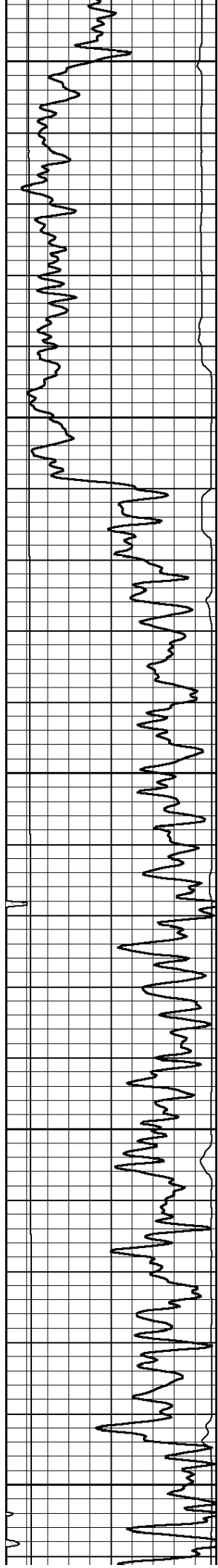
Database File: landmark_frick_#1-8.db
 Dataset Pathname: sgrcbl/pass6
 Presentation Format: scbl02
 Dataset Creation: Tue Jul 24 08:42:59 2012 by Log SCH 111116
 Charted by: Depth in Feet scaled 1:240

0	GR	150
0	LTEN (lb)	3000
TT3FT		
1200	(usec)	254

0	AMP (mV)	100	0	AMPAVG	150	
0	AMPx5 (mV)	20	0	AMPMAX	150	
-----		-----		0	AMPMIN	150
4	CCL	-0.8				

200	VDL	1200	1	Cement Map	8
				15	75





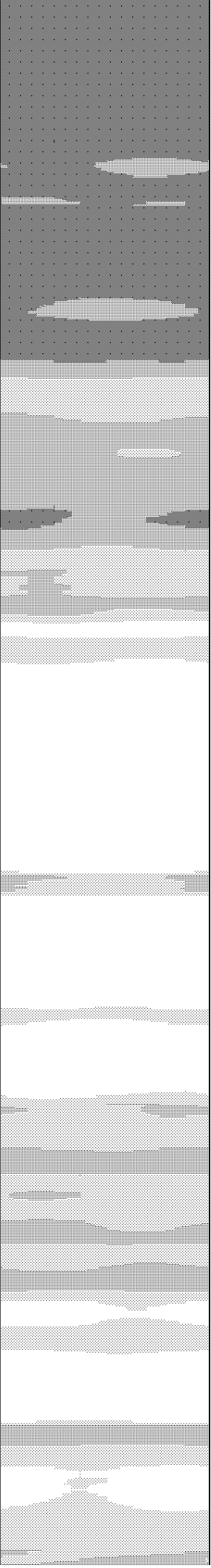
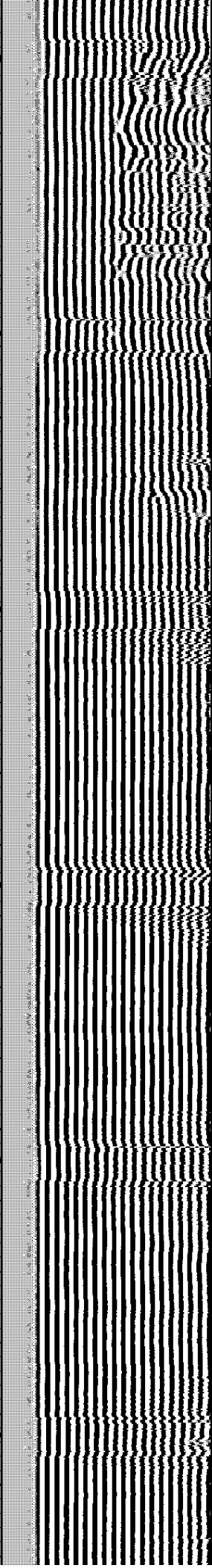
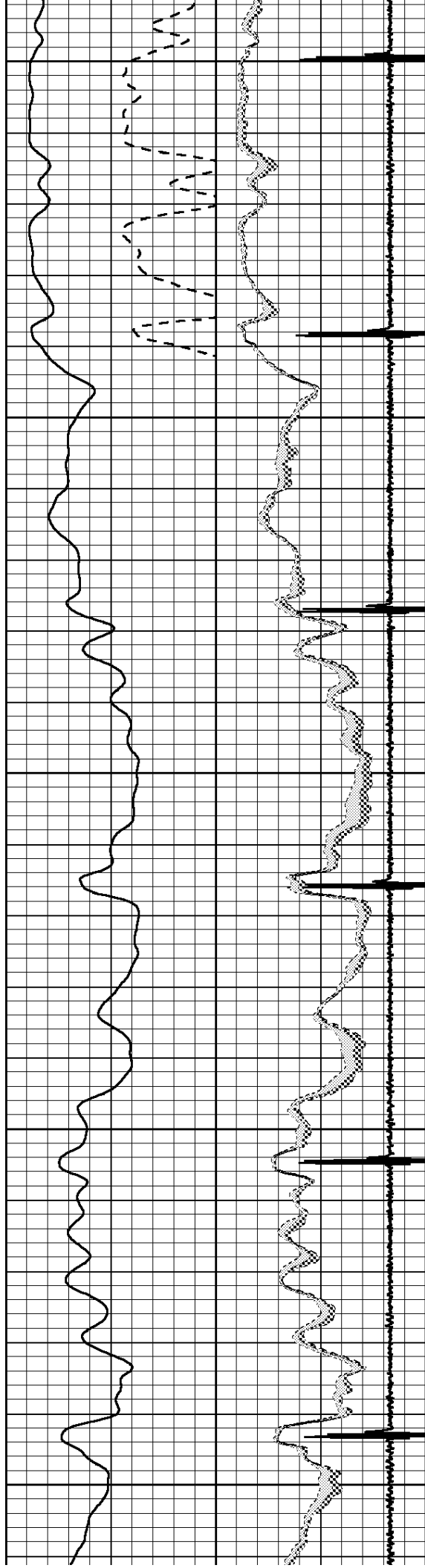
450

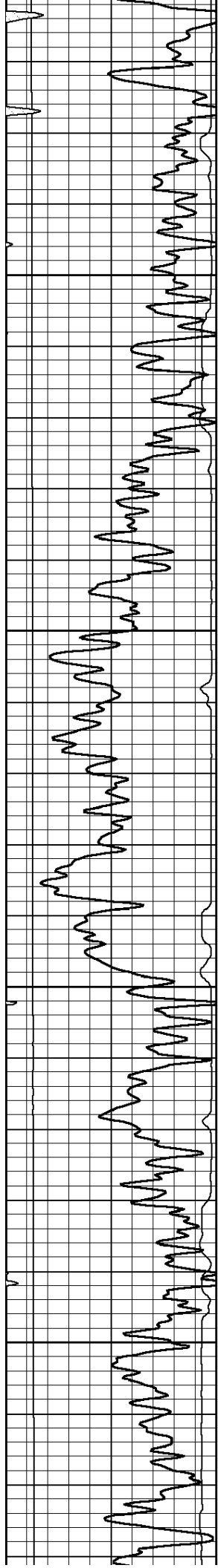
500

550

600

650



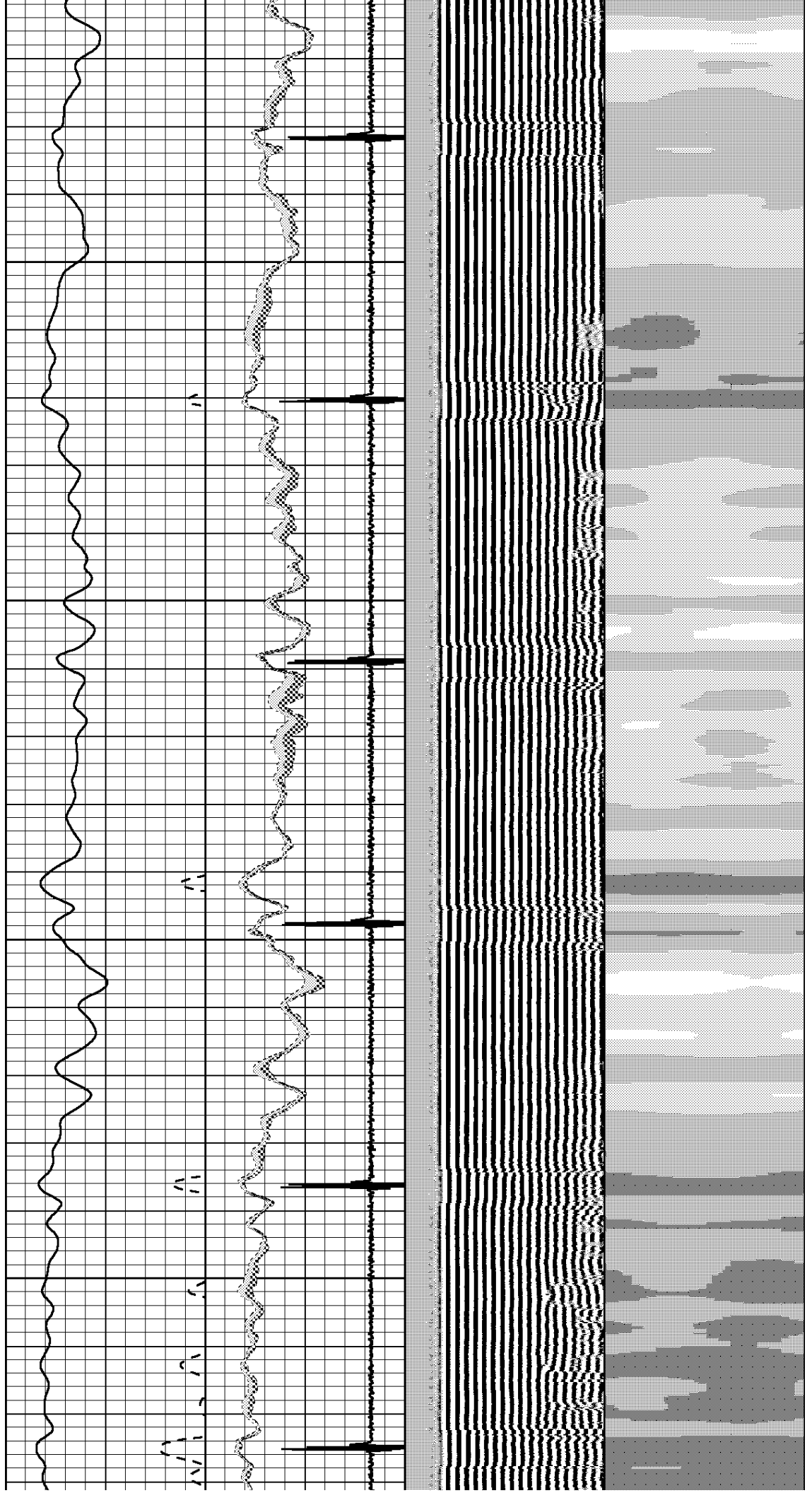


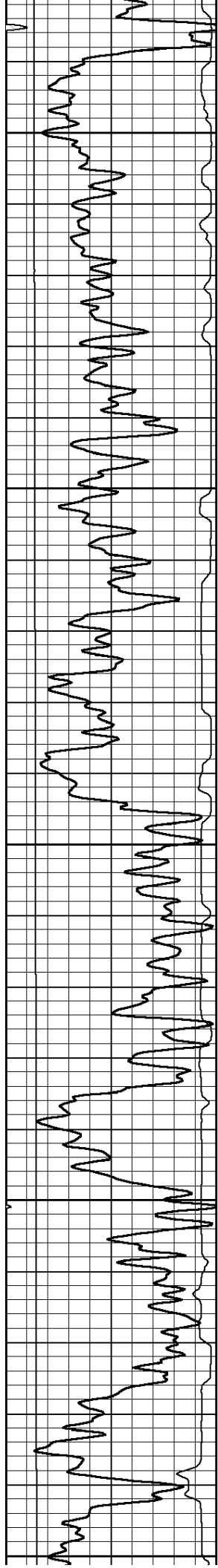
700

750

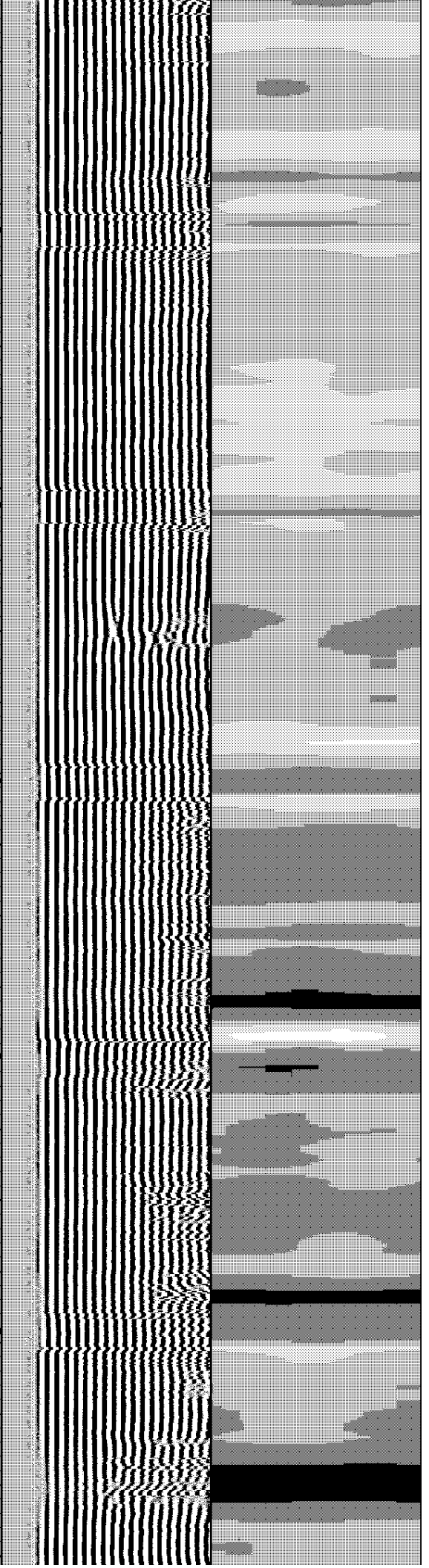
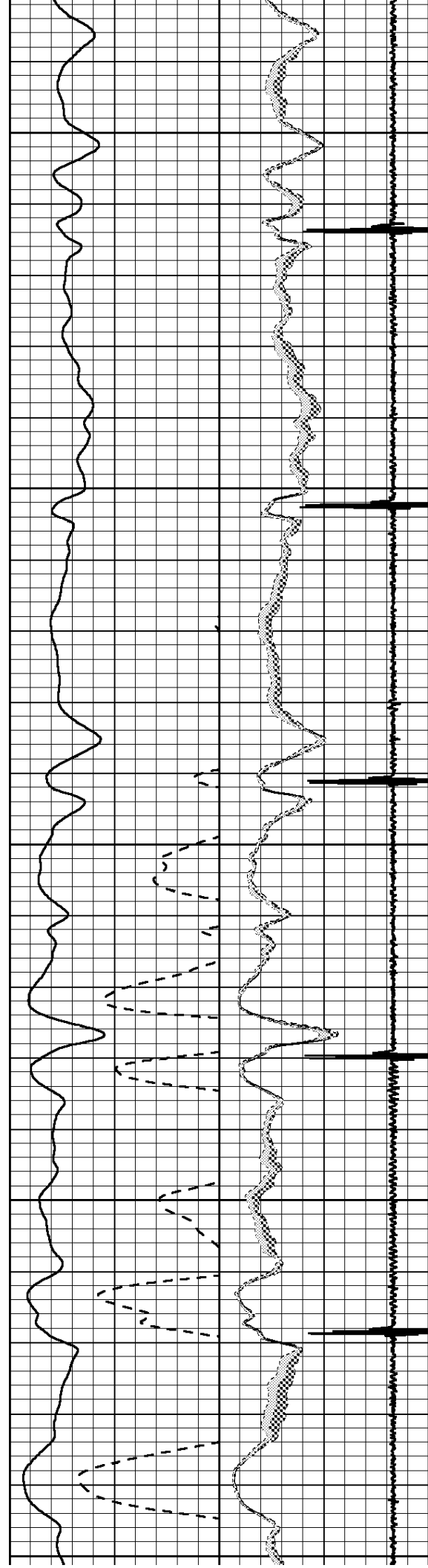
800

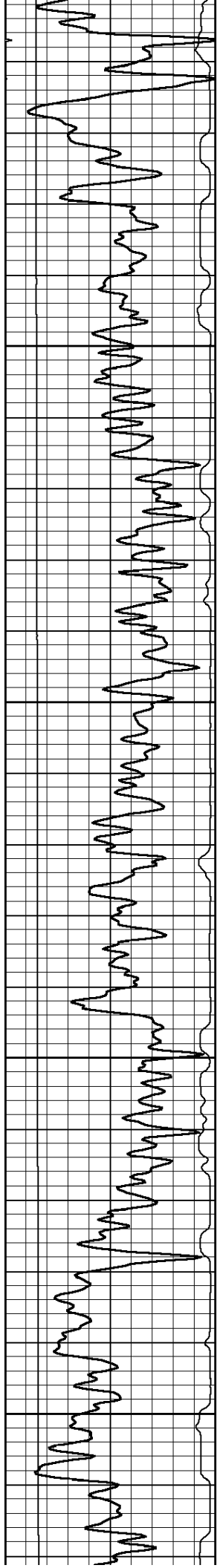
850





900
950
1000
1050
1100



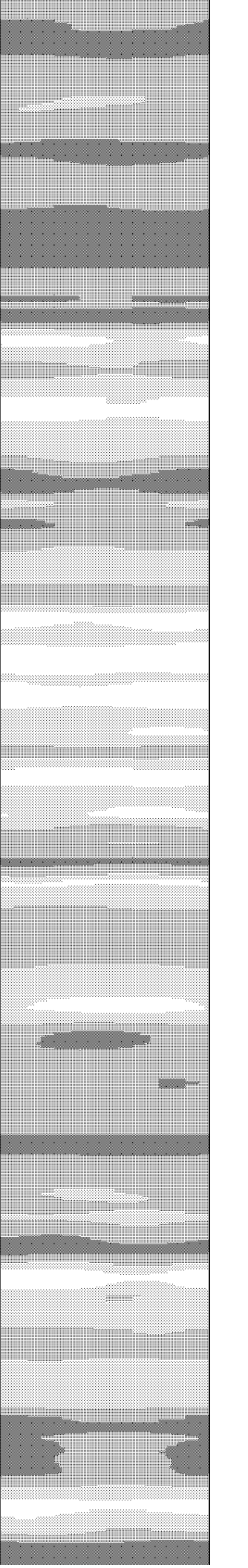
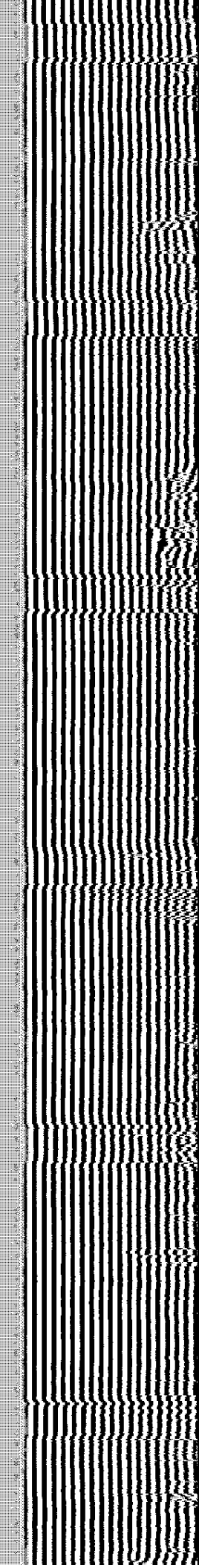
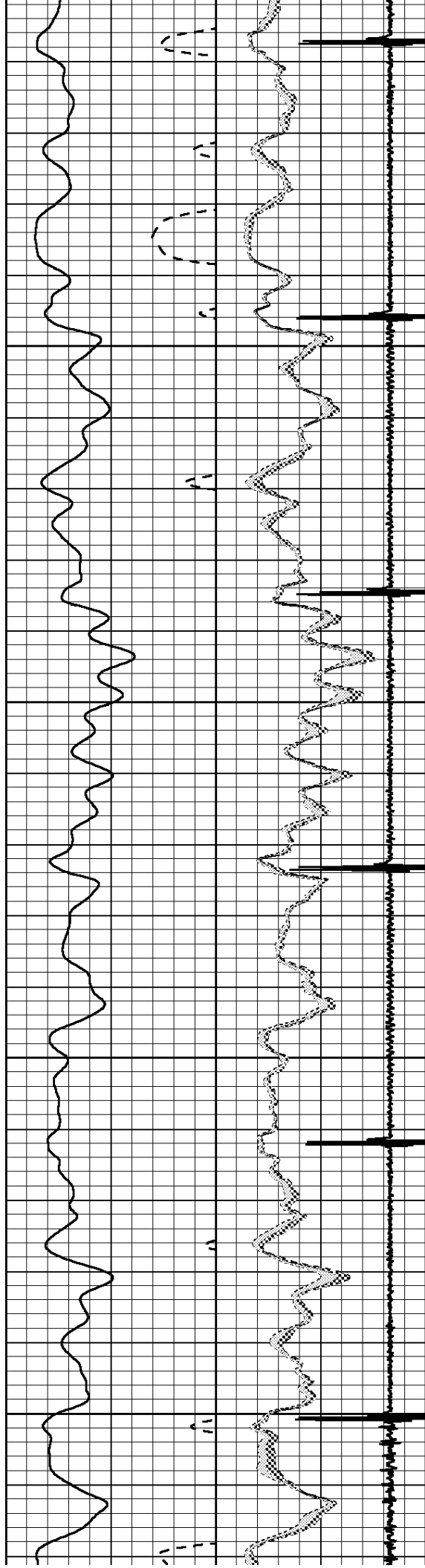


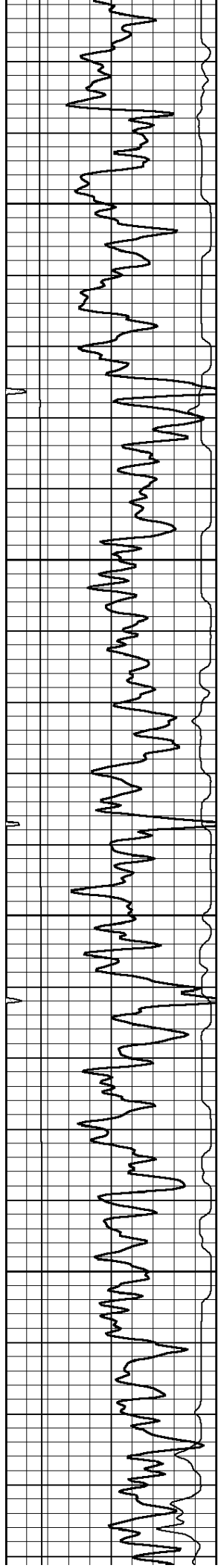
1150

1200

1250

1300



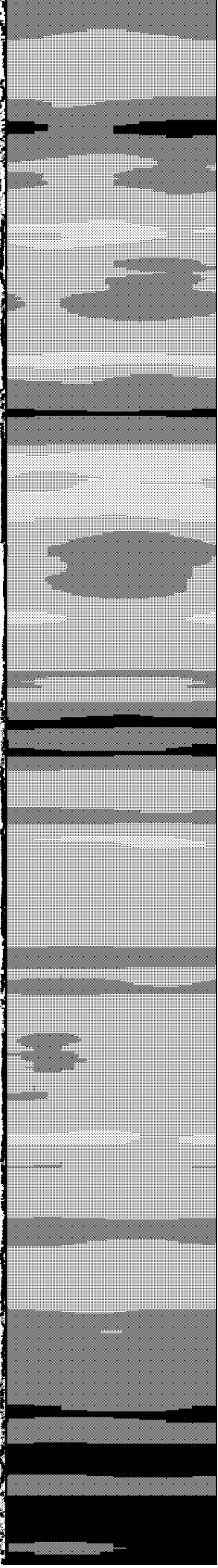
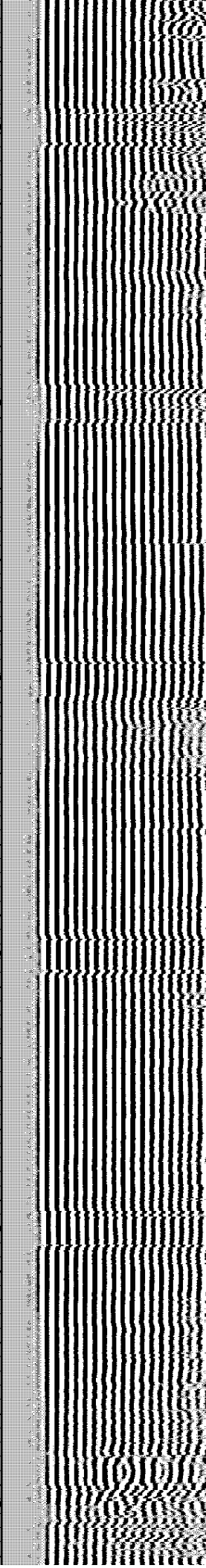
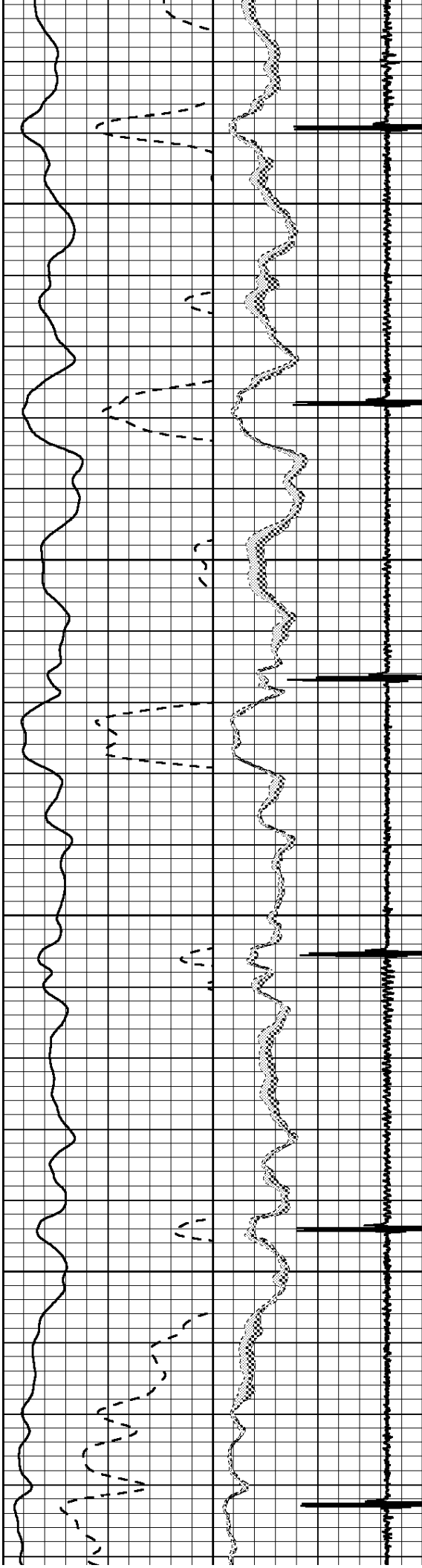


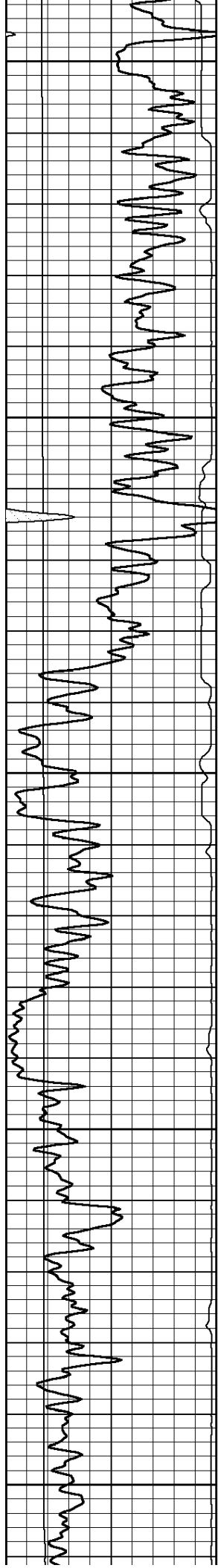
1350

1400

1450

1500





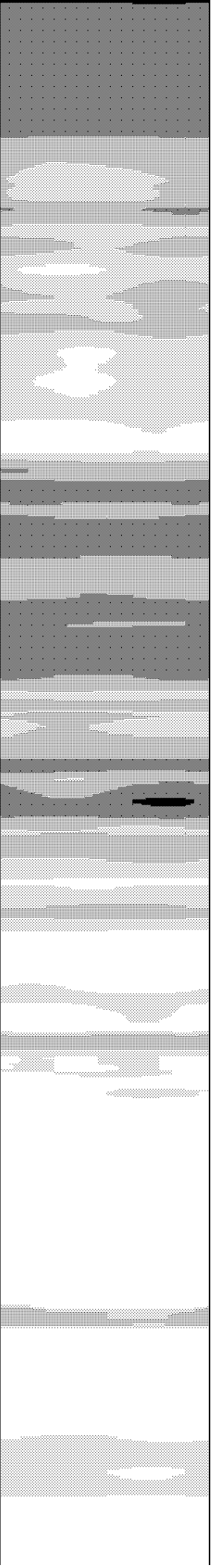
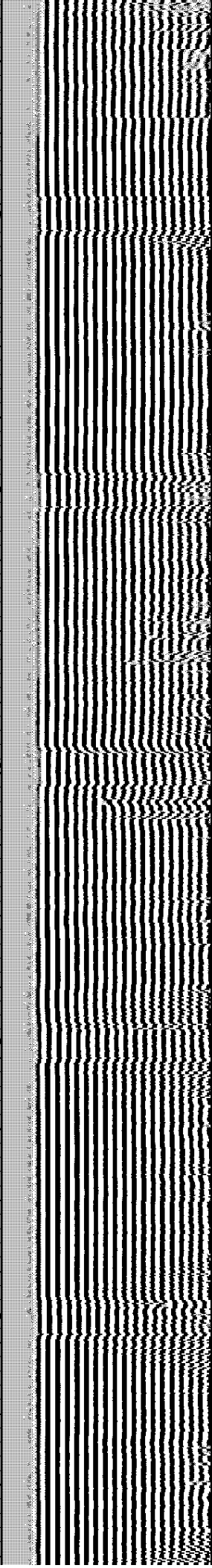
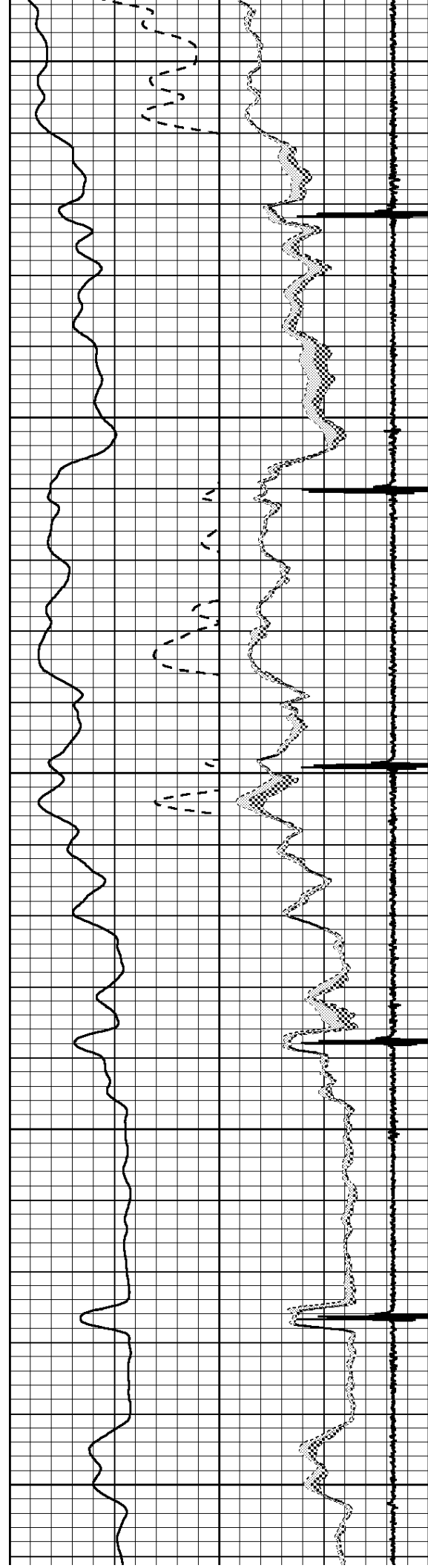
1550

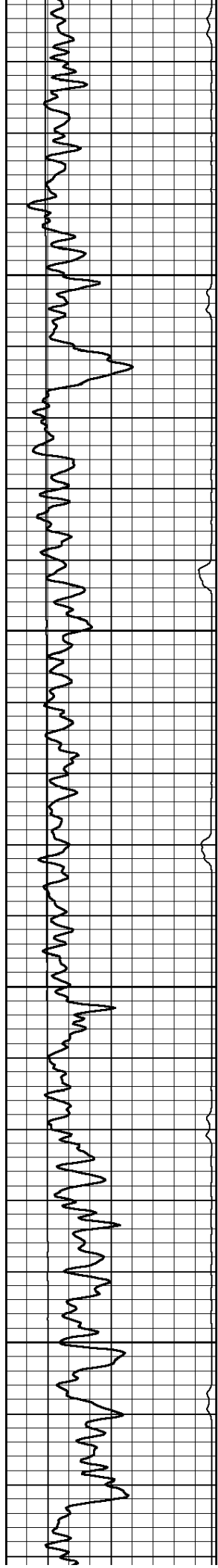
1600

1650

1700

1750



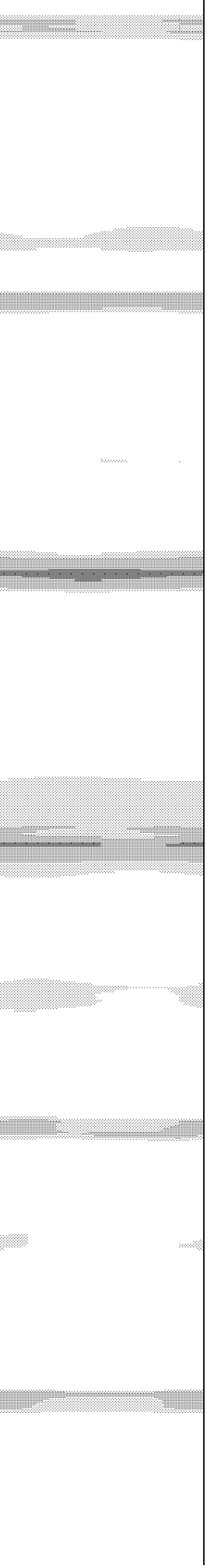
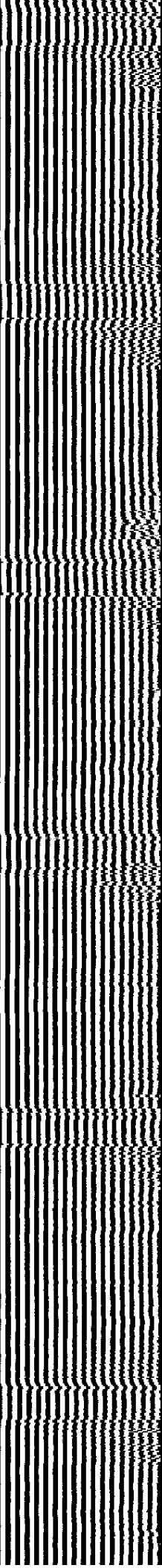
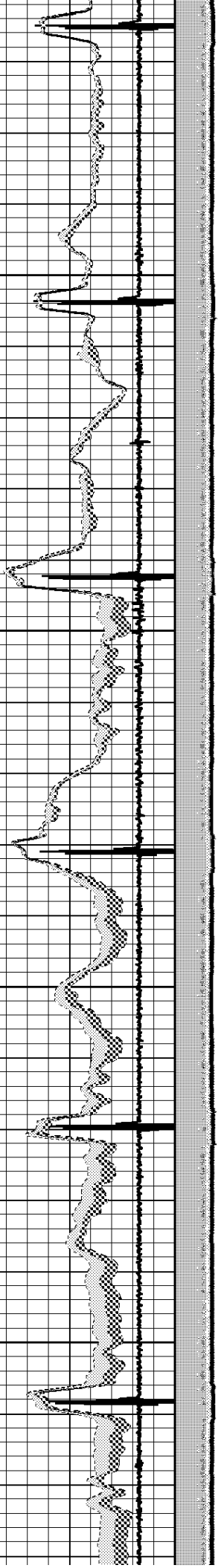
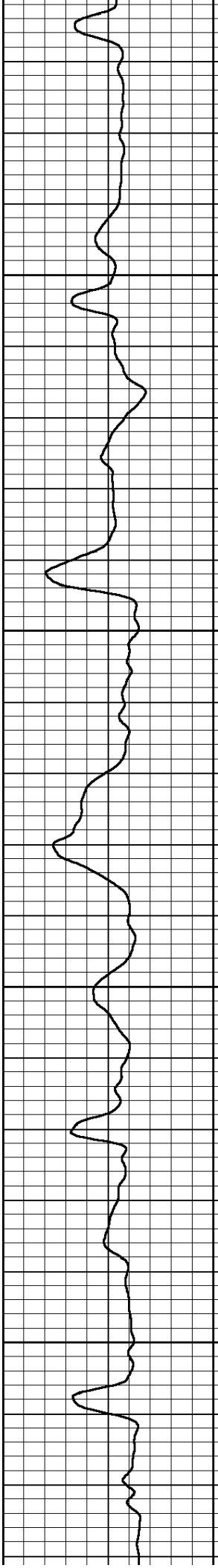


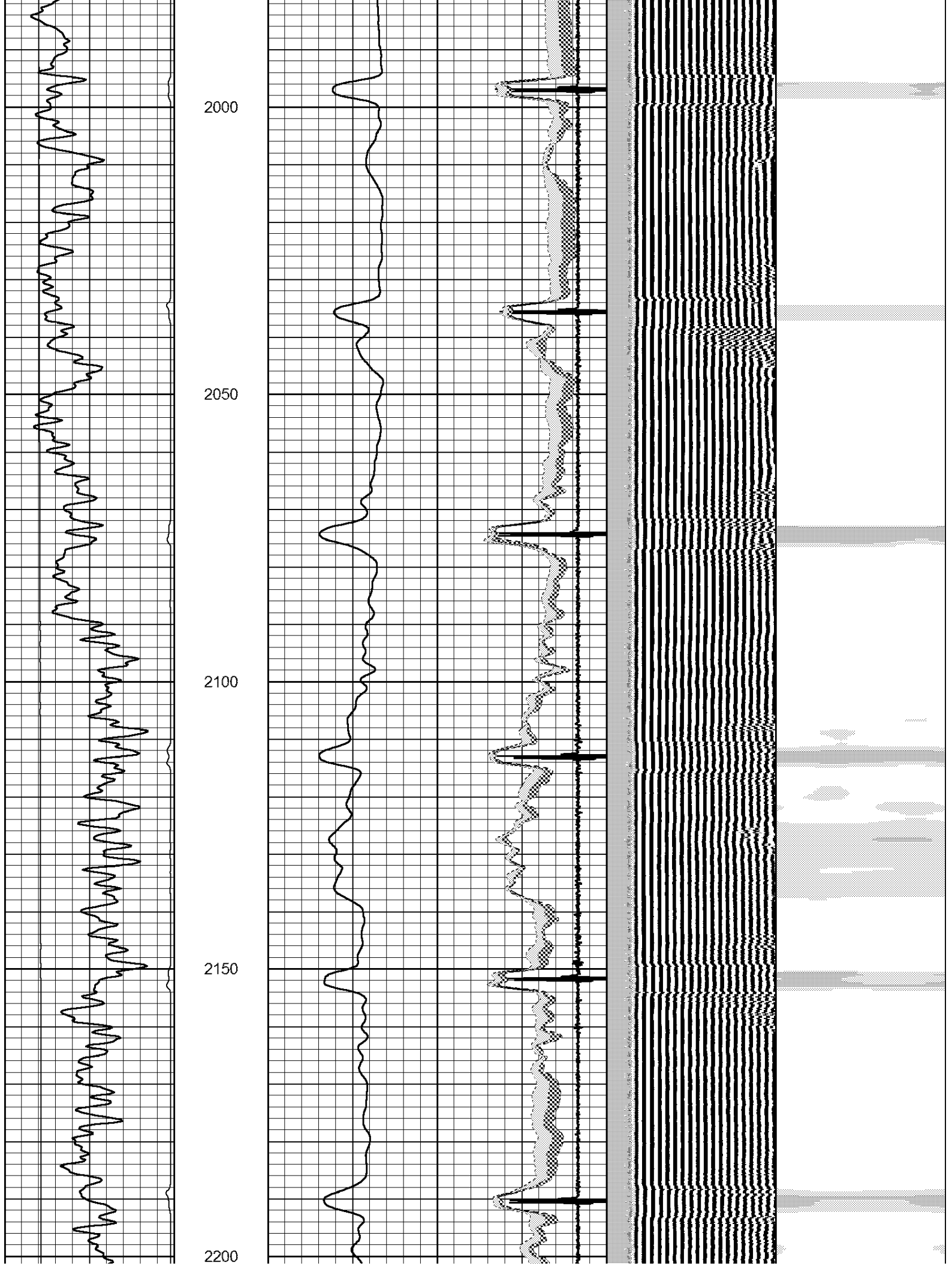
1800

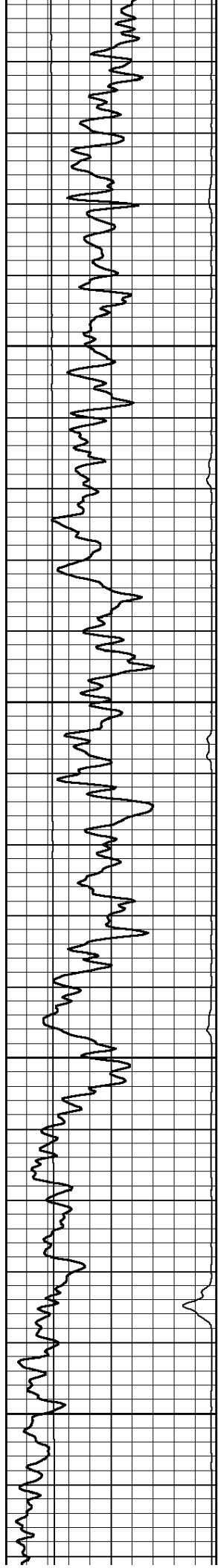
1850

1900

1950





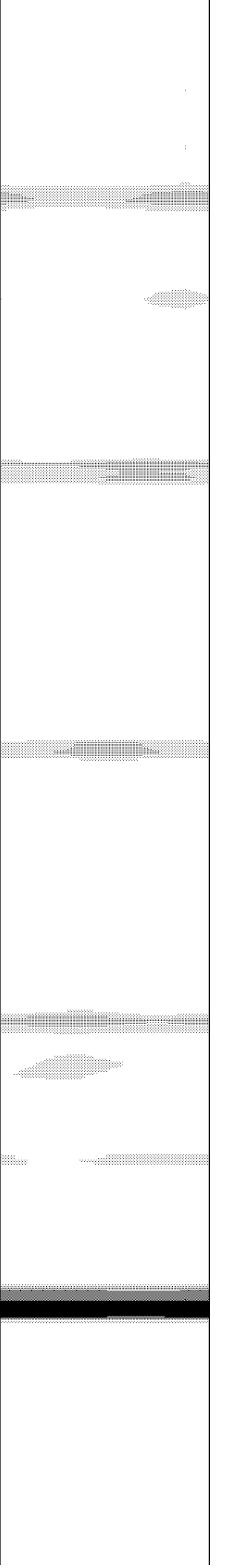
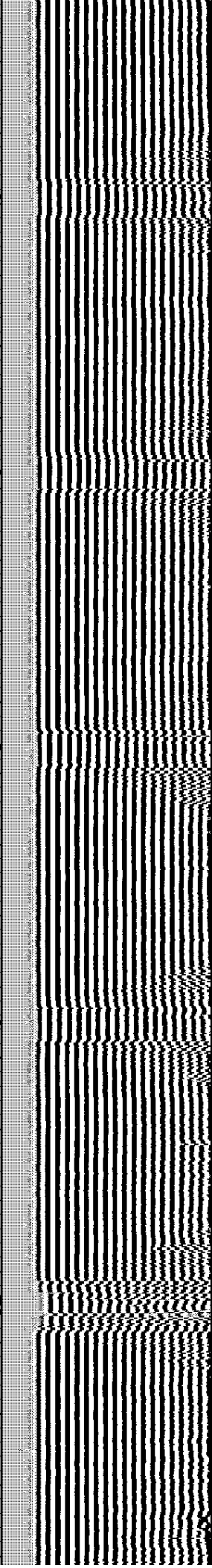
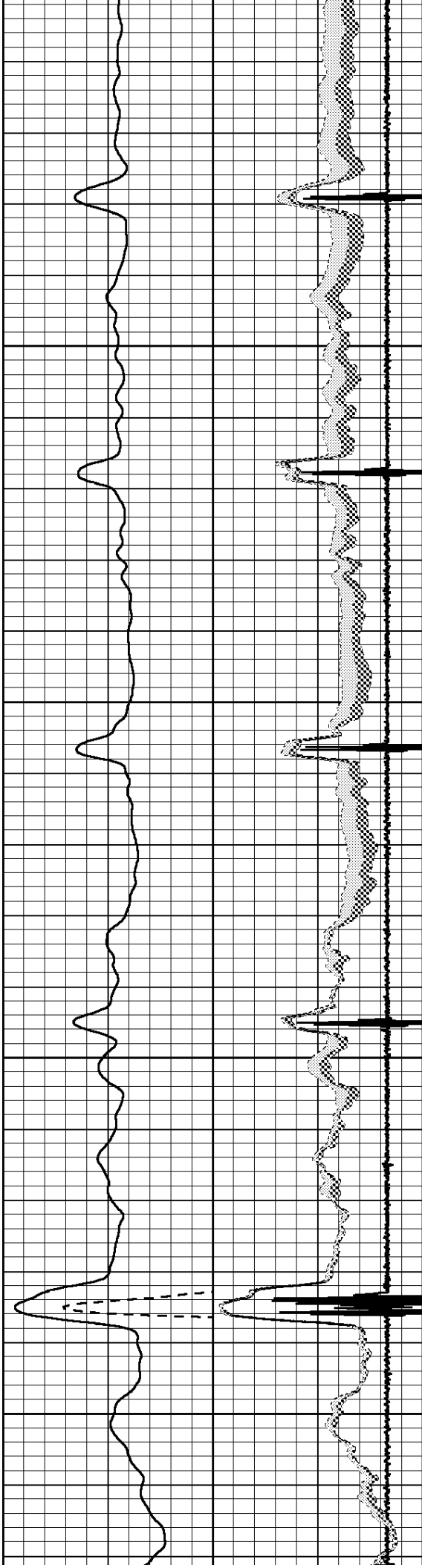


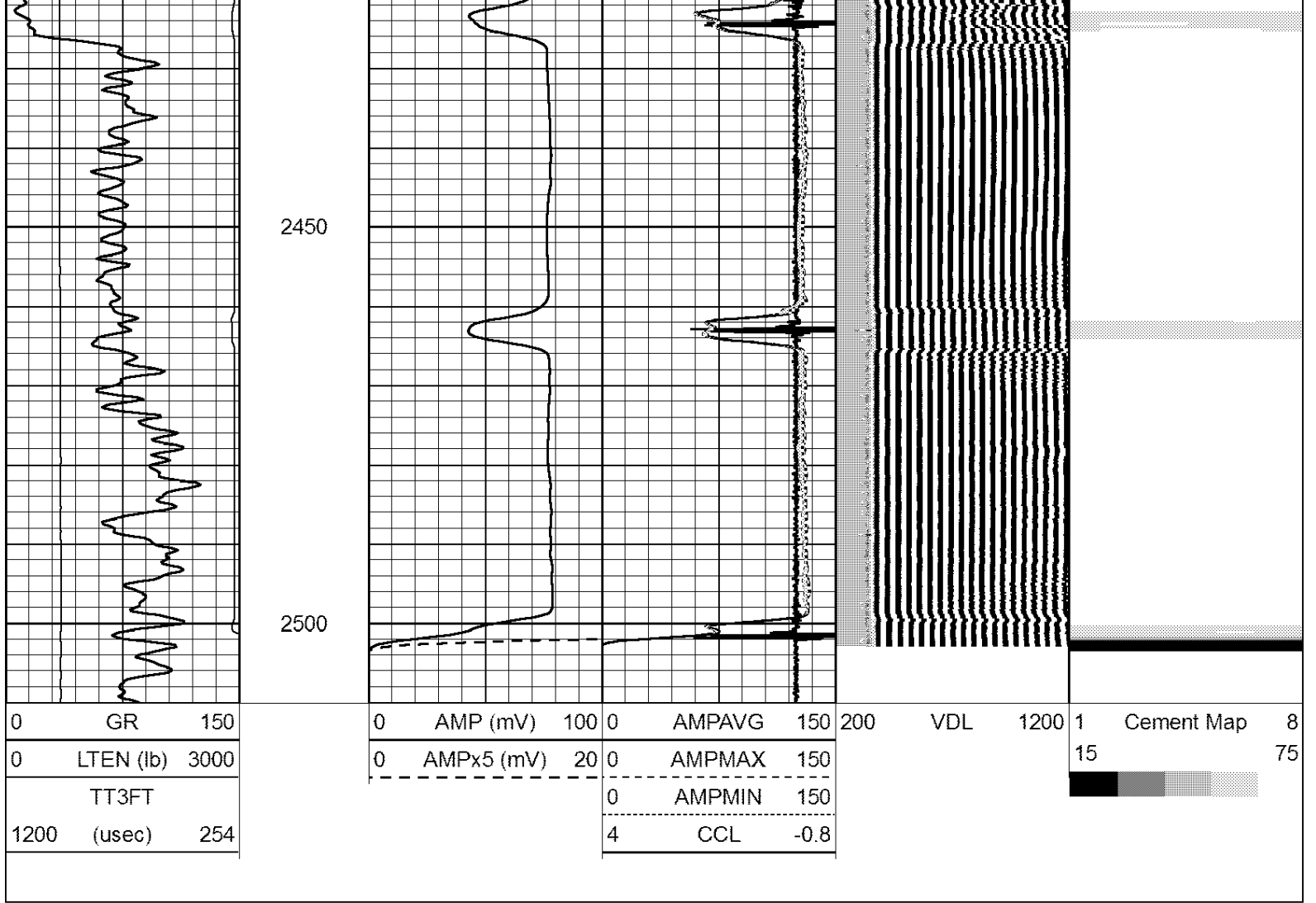
2250

2300

2350

2400

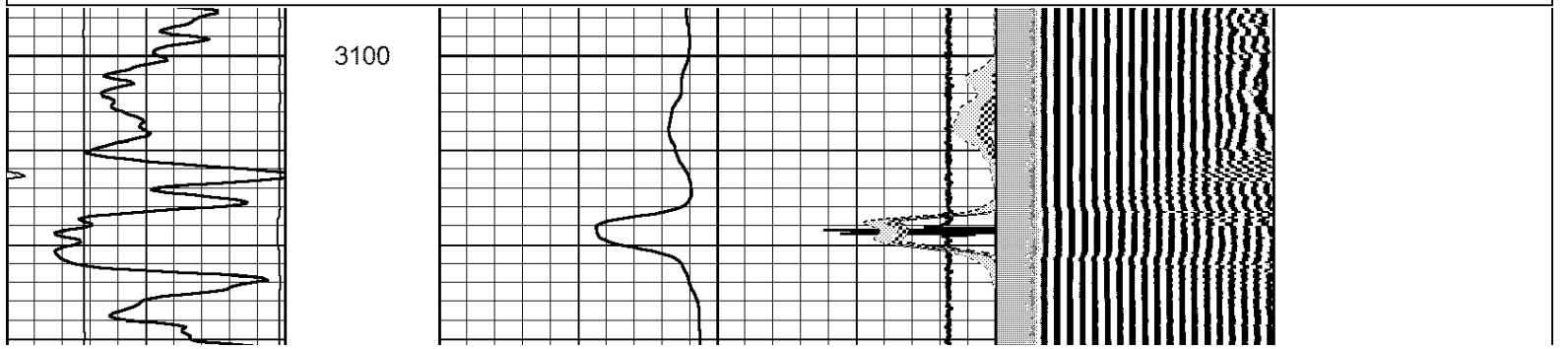
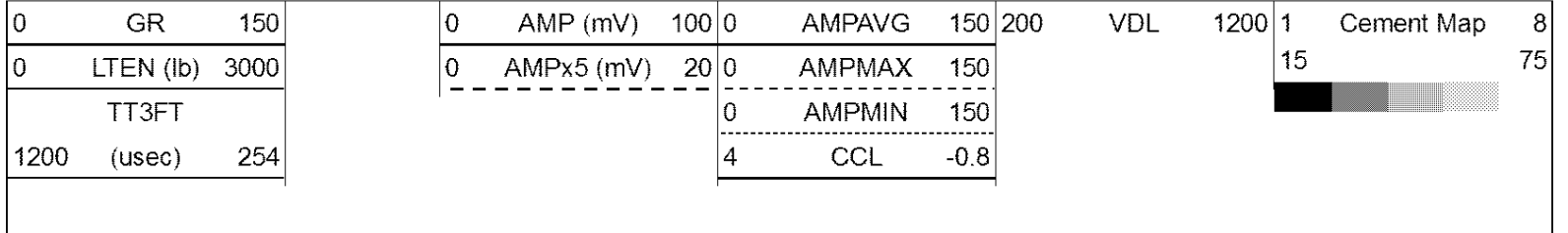


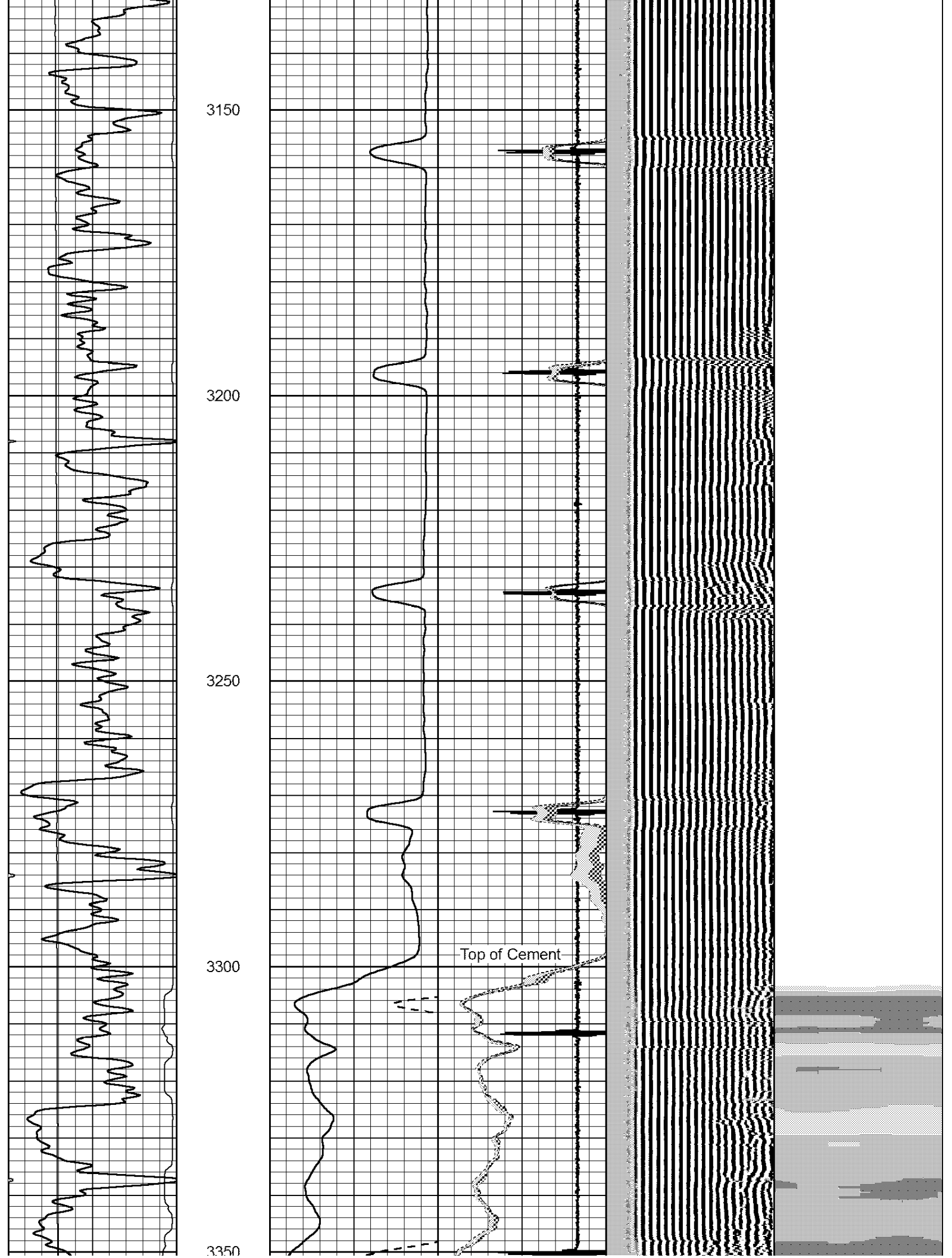


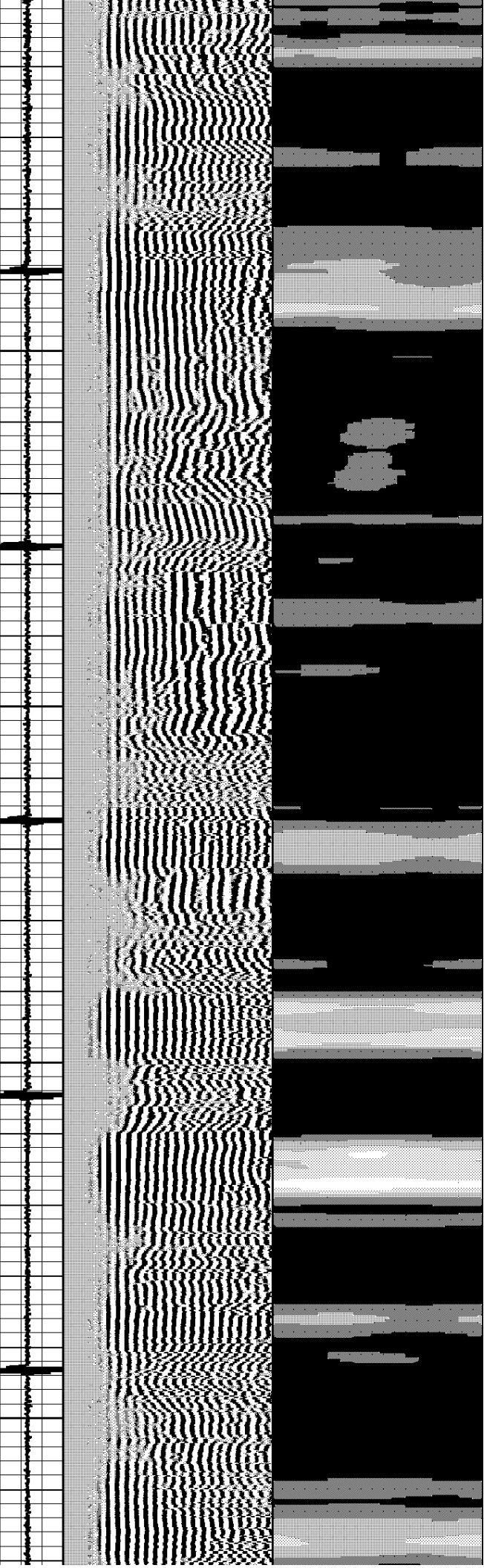
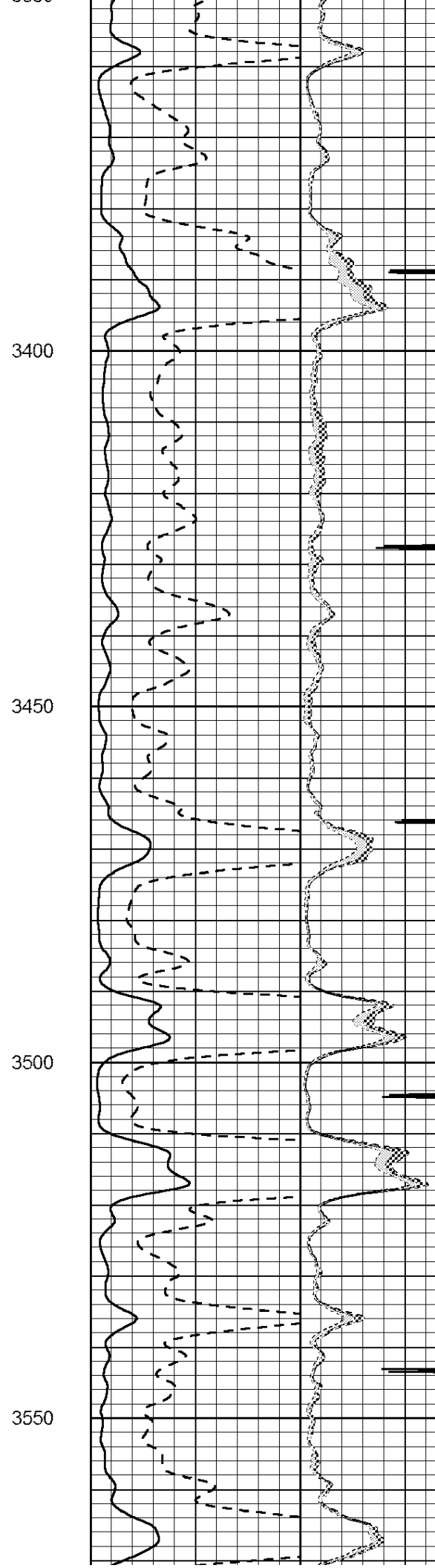
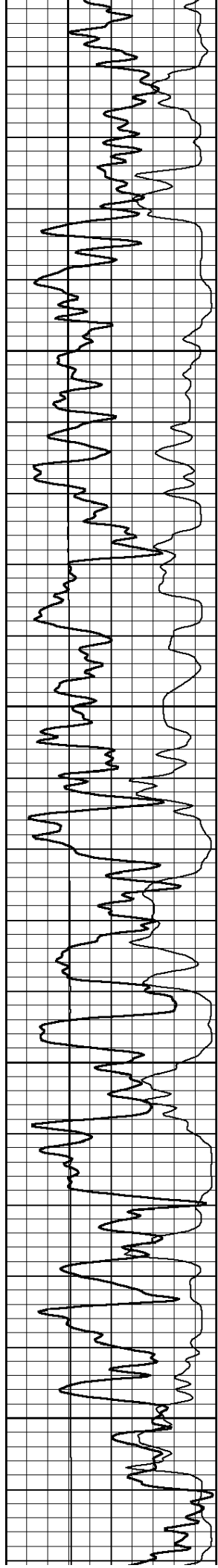
LOG-TECH

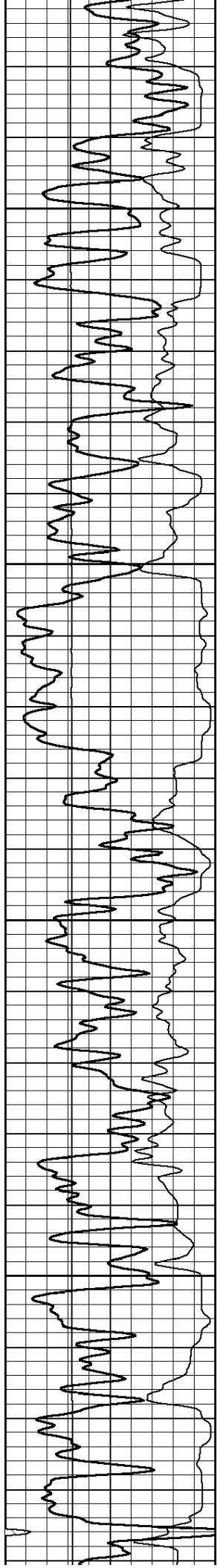
Main Pass

Database File: landmark_frick_#1-8.db
 Dataset Pathname: sgrcbl/pass5.1
 Presentation Format: scbl02
 Dataset Creation: Tue Jul 24 09:13:21 2012 by Calc SCH 111116
 Charted by: Depth in Feet scaled 1:240







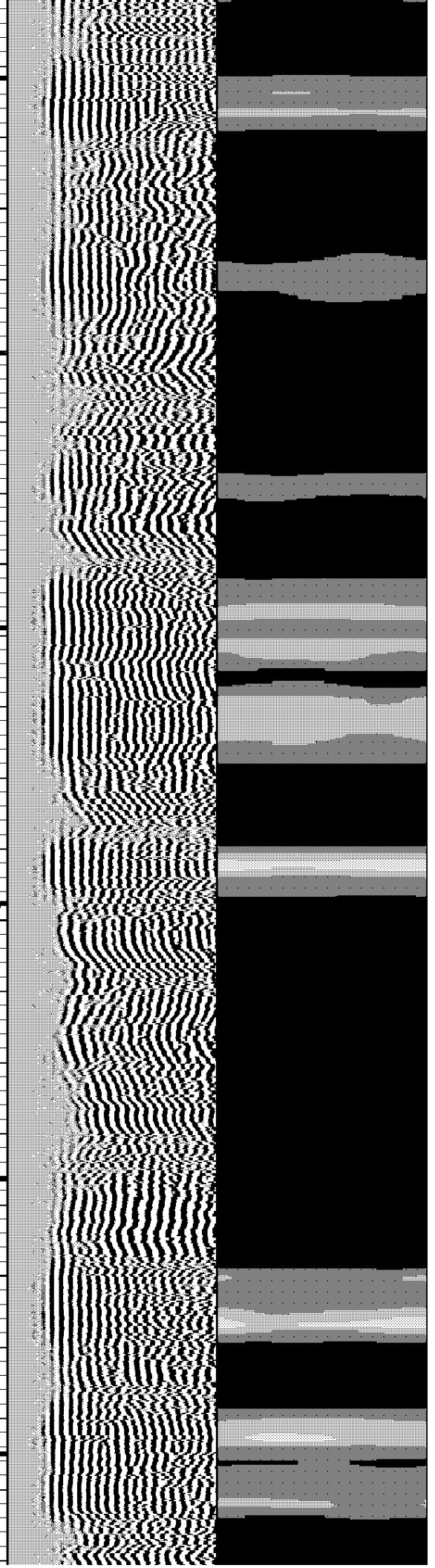
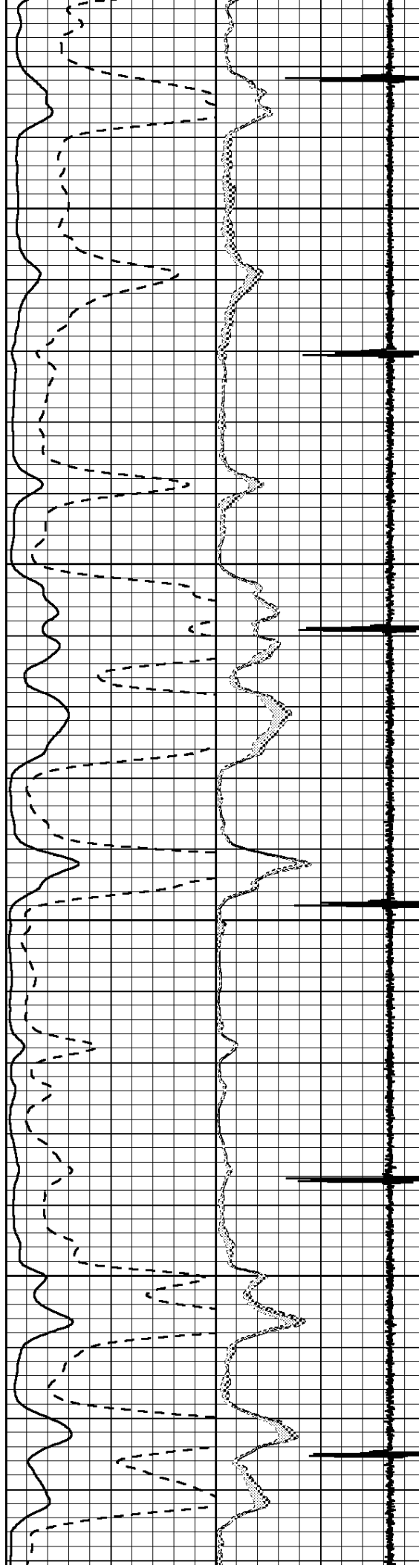


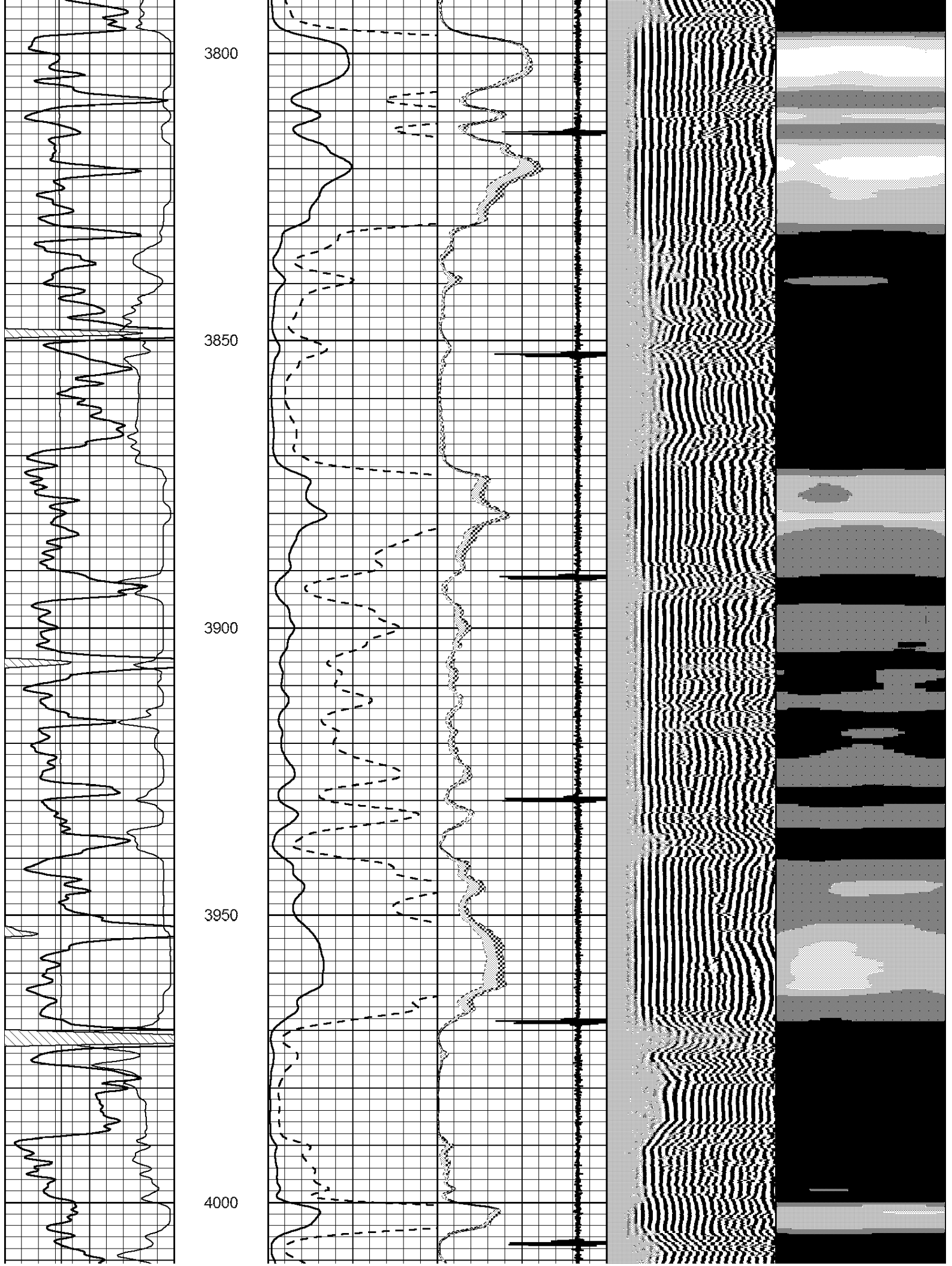
3600

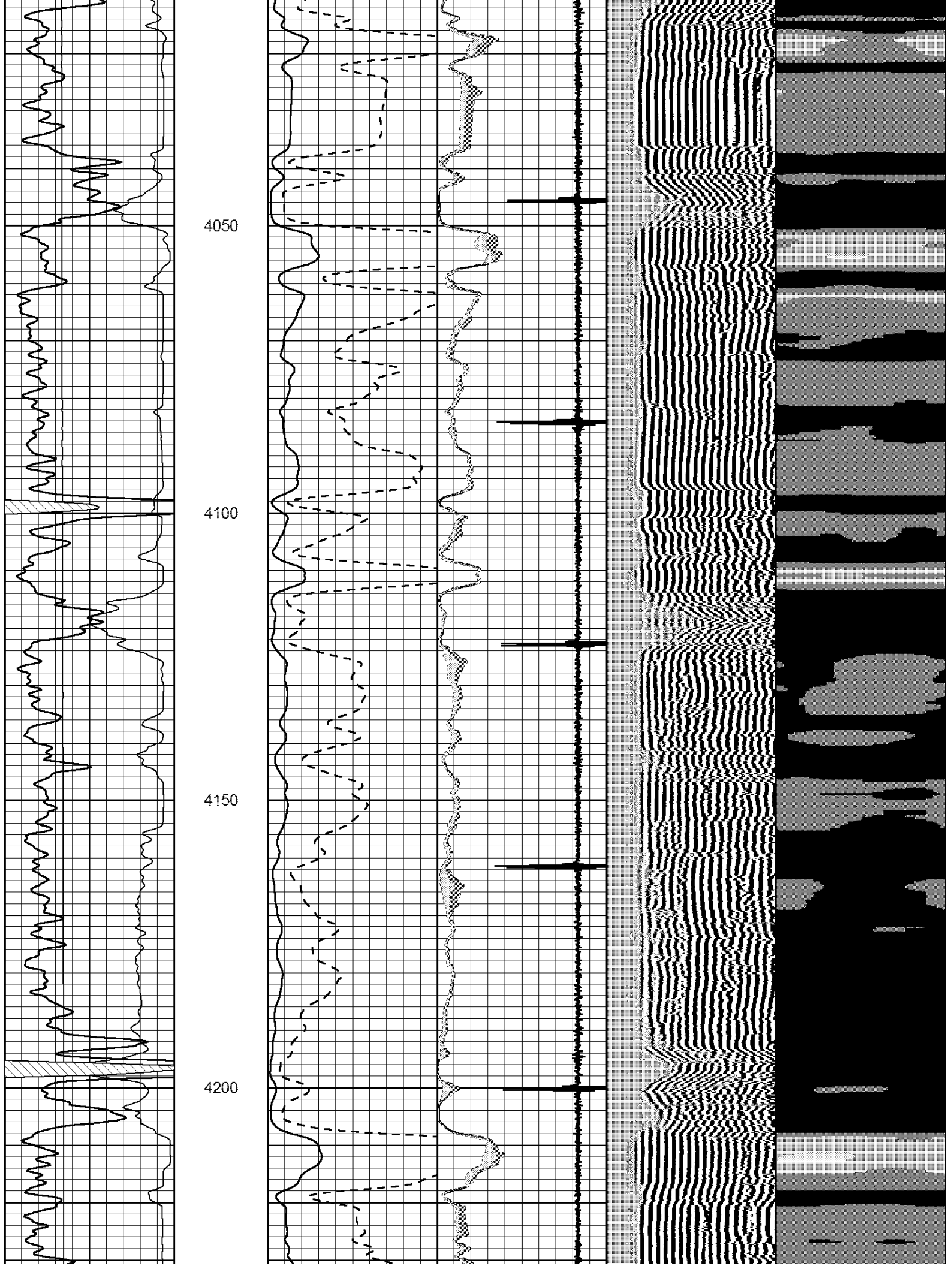
3650

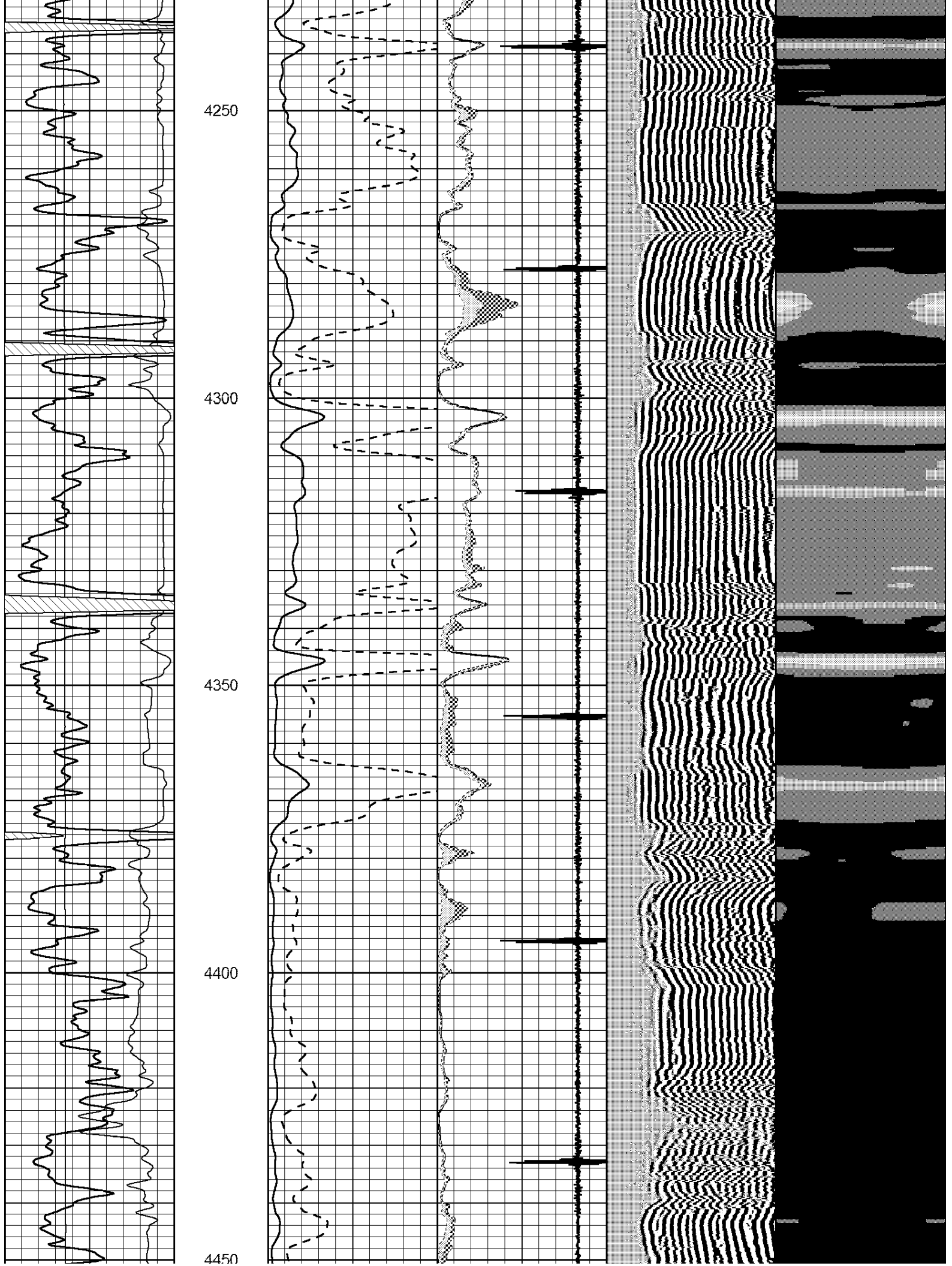
3700

3750

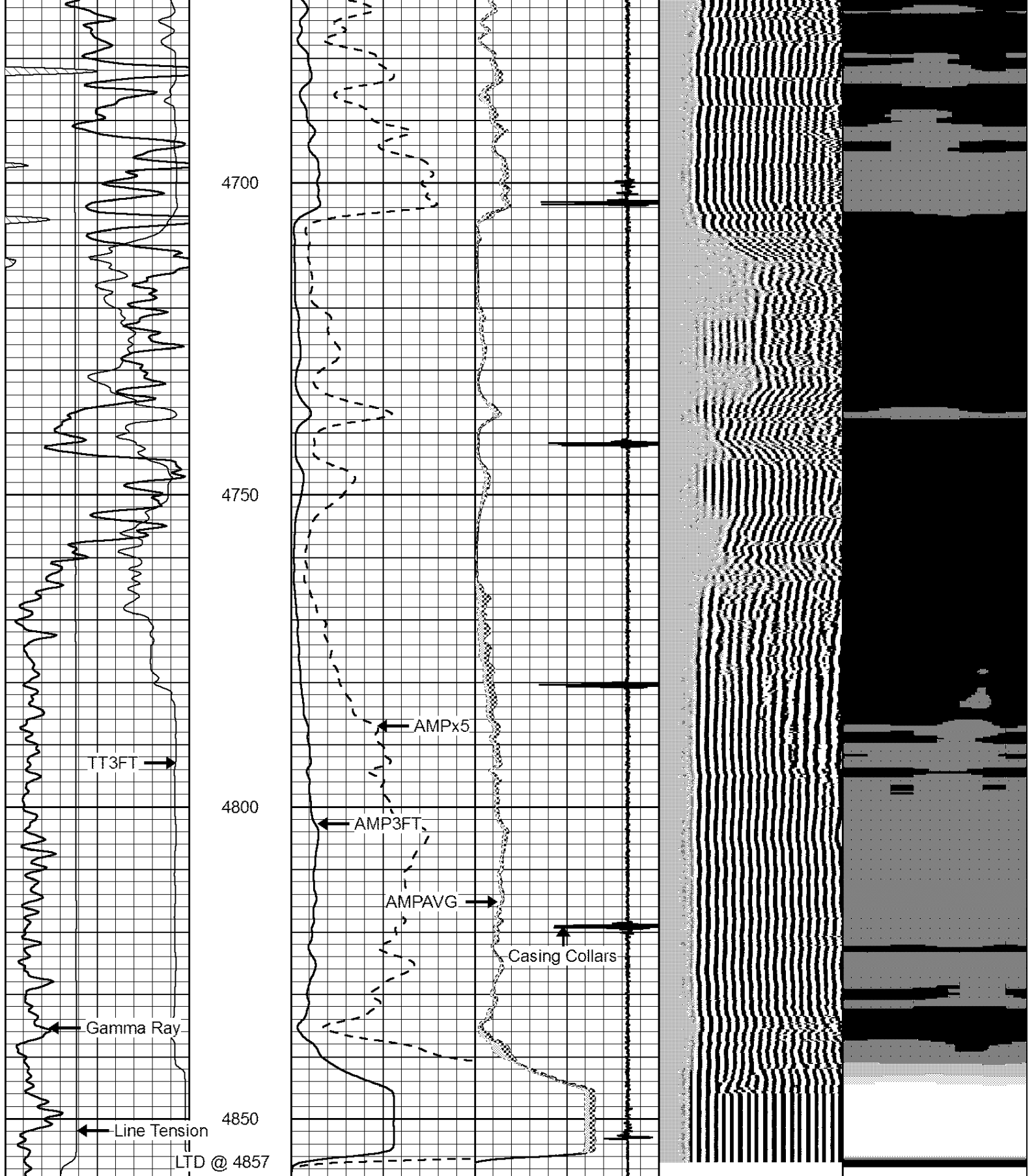












0	GR	150
0	LTEN (lb)	3000
	TT3FT	
1200	(usec)	254

0	AMP (mV)	100
0	AMPx5 (mV)	20
0	AMPAVG	150
0	AMPMAX	150
0	AMPMIN	150
4	CCL	-0.8

200	VDL	1200	1	Cement Map	8
			15		75

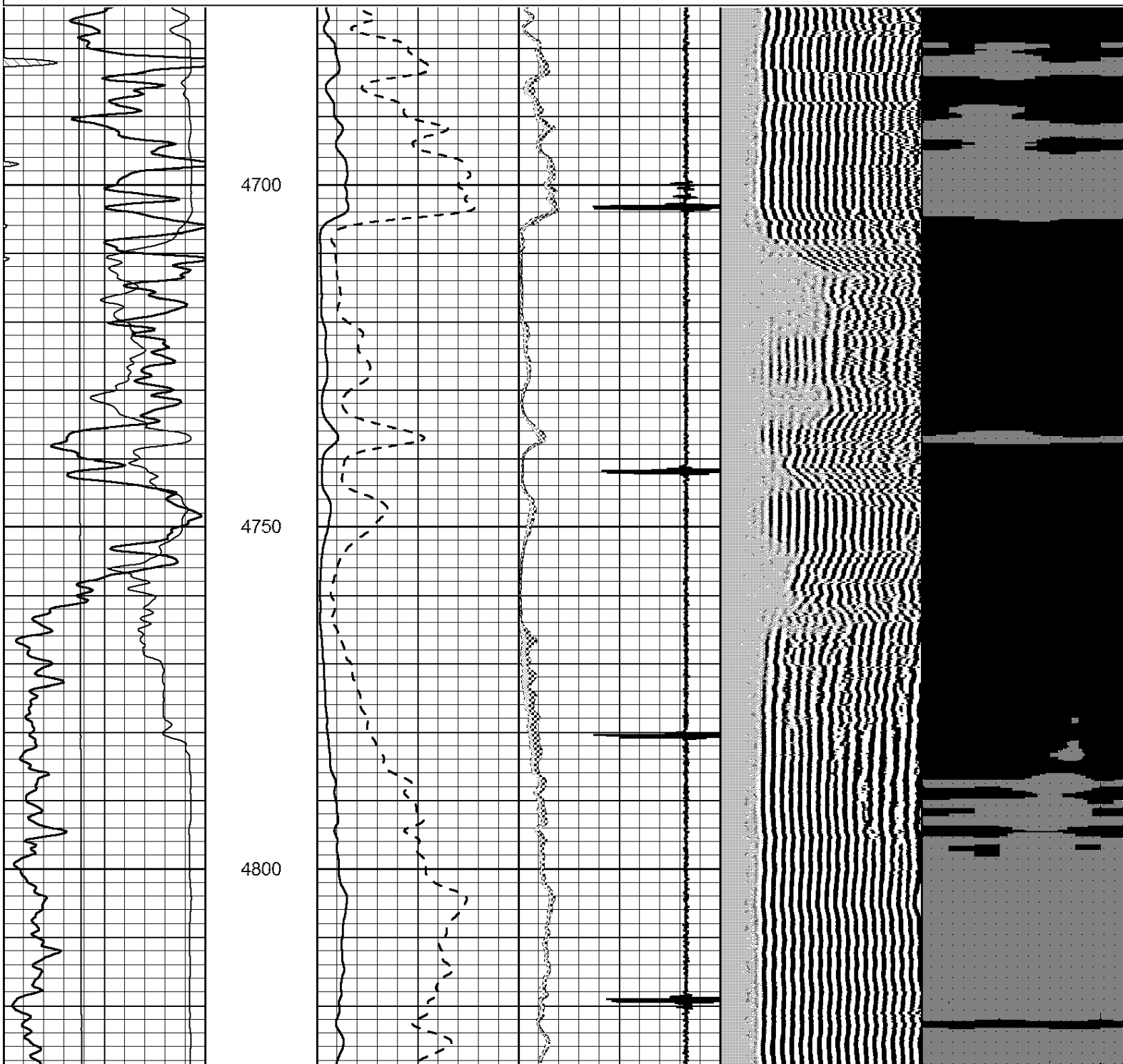
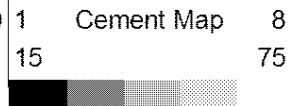
Database File: landmark_frick_#1-8.db
 Dataset Pathname: sgrcbl/pass4
 Presentation Format: scbl02
 Dataset Creation: Tue Jul 24 07:57:45 2012 by Log SCH 111116
 Charted by: Depth in Feet scaled 1:240

0	GR	150
0	LTEN (lb)	3000
TT3FT		
1200	(usec)	254

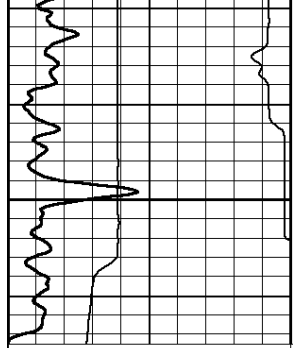
0	AMP (mV)	100	0	AMPAVG	150	200	VDL	1200
0	AMPx5 (mV)	20	0	AMPMAX	150			

0	AMPMIN	150						

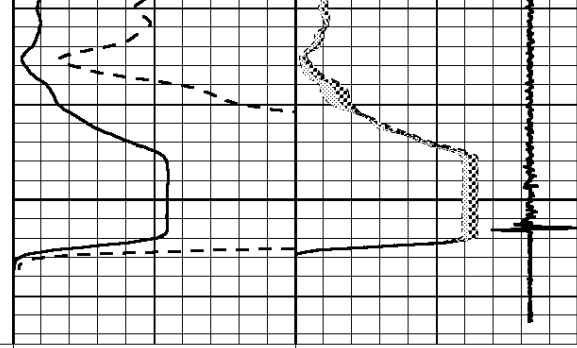
4	CCL	-0.8						



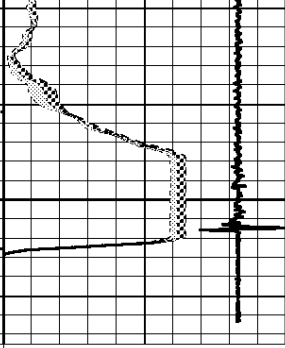
4850



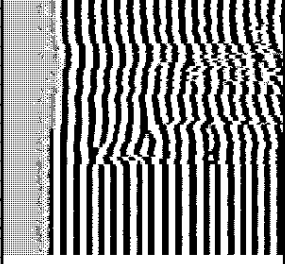
0	GR	150
0	LTEN (lb)	3000
TT3FT		
1200	(usec)	254



0	AMP (mV)	100
0	AMPx5 (mV)	20



0	AMPMAX	150
0	AMPMIN	150
4	CCL	-0.8



200	VDL	1200
-----	-----	------



1	Cement Map	8
15		75

