

**Natural Gamma Ray
Rate Of Penetration**



1 : 600

County	: Barber
Field	: Arrowhead
Location	: Lat: 37° 2' 5.26" North Long: 98° 24' 44.15" West
Well	: Schupbach 3510 #4-1H
Company	: Shell Exploration and Productio
Rig	: Nabors 180
LOCATION	Company : Shell Exploration and Productio Rig : Nabors 180 Well : Schupbach 3510 #4-1H Field : Arrowhead County : Barber API Number : 15007238530100
Latitude	: 37° 2' 5.26" North
Longitude	: 98° 24' 44.15" West
UTM Easting	= 2,025,611.78 ft
UTM Northing	= 134,054.97 ft
Other Services	Directional Services

Permanent Datum	: Ground Level	Elevation	: 1309.00 ft
Log Measured From	: Drill Floor	23.80 ft	Above Permanent Datum
Drilling Measured From	: Drill Floor	MD LOG	
Elev.	KB	N/A	
	DF	1332.80 ft	
	GL	1309.00 ft	
	WD	N/A	

Depth Logged	: 83.00 ft	To	9,880.00 ft
Date Logged	: 17-Aug-12	To	20-Sep-12
Total Depth MD	: 9,880.00 ft	TVD	: 4,794.26 ft
Spud Date	: 18-Aug-12	Plot Type	: Final
		Plot Date	: 20-Sep-12
Unit No.	: PP#40	Job No.	: OK-XX-0009504797

Run No.	Borehole Record (MD)		Run No.	Borehole Record (MD)	
	Size	From		Size	From
0100	12.250 in	83.00 ft		800.00 ft	
0200	8.750 in	800.00 ft		4,318.00 ft	
0300	8.750 in	4,318.00 ft		5,216.00 ft	
0400	6.125 in	5,216.00 ft		6,191.00 ft	
0500	6.125 in	6,191.00 ft		6,714.00 ft	
0600	6.125 in	6,714.00 ft		7,788.00 ft	
0700	6.125 in	7,788.00 ft		9,880.00 ft	

WELL INFORMATION

MWD Run Number	200	300	400	500	600
Date run completed	05-Sep-12	08-Sep-12	12-Sep-12	14-Sep-12	16-Sep-12
Rig Bit Number	0200	0300	0400	0500	0600
Bit Size (in)	8.750	8.750	6.125	6.125	6.125
Tool Nominal OD (in)	8.000	6.750	4.750	4.750	4.750
Log Start Depth (MD, ft)	800.00	4,318.00	5,216.00	6,191.00	6,714.00
Log End Depth (MD, ft)	4,318.00	5,216.00	6,191.00	6,714.00	7,788.00
Drill or Wipe	Drill	Drill	Drill	Drill	Drill
Drill/Wipe Start Date and Time	02-Sep-12 09:13	05-Sep-12 13:11	10-Sep-12 04:45	12-Sep-12 08:44	14-Sep-12 01:35
Drill/Wipe End Date and Time	05-Sep-12 06:00	08-Sep-12 11:32	12-Sep-12 08:31	14-Sep-12 09:44	16-Sep-12 12:30
Min Inc (deg) @ Depth (MD, ft)	.03 @ 2,883.00	6.89 @ 4,273.00	89.60 @ 6,010.00	89.38 @ 6,485.00	89.66 @ 7,434.00
Max Inc (deg) @ Depth (MD, ft)	4.59 @ 804.00	86.28 @ 5,159.00	91.67 @ 5,725.00	90.62 @ 6,295.00	91.48 @ 7,244.00
Bit TFA(in2) / Bit Type	.66 / PDC	.45 / PDC	.55 / PDC	.55 / PDC	.52 / PDC
Flow Rate (gpm)	550.00	400.00	297.00	297.00	299.00
Max AV (fpm) / CV (fpm) @ MWD	286.0 / 322.0	332.0 / 420.0	479.0 / 520.0	484.0 / 520.0	484.0 / 520.0
Fluid Type	Fresh Water Gel	Fresh Water Gel	Fresh Water Gel	Fresh Water Gel	Fresh Water Gel
Density (ppg) / Viscosity (spqt)	9.10 / 55.00	9.10 / 60.00	8.40 / 27.00	8.40 / 27.00	8.40 / 28.00
Filtrate CL (ppm)	22,000.00	20,500.00	2,600.00	2,500.00	28,000.00
pH / Fluid Loss (mptm)	11.20 / 0	11.20 / 0	11.20 / 5	11.20 / 0	11.20 / 5
PV (cP) / YP (lhf2)	18 / 18.00	25 / 18.00	1 / 1.00	1 / 1.00	1 / 1.00
% Solids / % Sand	4.50 / 1.00	7.90 / 1.00	1.00 / 0.75	1.00 / 1.00	1.00 / 0.75
% Oil / Oil:Water Ratio	N/A / N/A	N/A / N/A	N/A / N/A	N/A / N/A	N/A / N/A
Rm @ Measured Temp (degF)	N/A @ N/A	N/A @ N/A	N/A @ N/A	N/A @ N/A	N/A @ N/A
Rmf @ Measured Temp (degF)	N/A @ N/A	N/A @ N/A	N/A @ N/A	N/A @ N/A	N/A @ N/A

Rmc @ Measured Temp (degF)	N/A @ N/A	N/A @ N/A	N/A @ N/A	N/A @ N/A	N/A @ N/A
Max Tool Temp (degF) / Source	144.54 / PCM	139.96 / PCM	133.20 / PCM	133.20 / PCM	130.96 / PCM
Rm @ Max Tool Temp (degF)	N/A @ N/A	N/A @ N/A	N/A @ N/A	N/A @ N/A	N/A @ N/A
Lead MWD Engineer	Fred Martin	Fred Martin	Fred Martin	Fred Martin	Fred Martin
Customer Representative	Jack Everett	Jack Everett	John Dyer	Jack Everett	Jack Everett

SENSOR INFORMATION

Directional Sensor Information

Tool Type	PCDC	PCDC	PCDC	PCDC	PCDC
Distance From Bit (ft)	60.16	54.22	50.29	51.20	51.24
Software Version	6.21	6.21	6.21	6.21	6.21
Sub Serial Number	11149805	11149805	11130241	11130241	11130421
Sonde Serial Number	400471	400261	400261	400471	400261
Sensor ID Number	N/A	N/A	N/A	N/A	N/A
Toolface Offset (deg)	39.40	358.40	234.52	101.36	38.01

Gamma Ray Sensor Information

Tool Type	PCG	PCG	PCG	PCG	PCG
Distance From Bit (ft)	55.06	49.12	45.19	46.10	46.14
Recorded Sample Period (sec)	20	15	15	15	15
Software Version	8.15	8.15	8.15	8.15	8.15
Sub Serial Number	11149805	11149805	11130241	11130241	11130241
Insert/Sonde Serial Number	11293316	11293340	11293340	11293316	11293340

Pulser Controller Sensor Information

Tool Type	PCM	PCM	PCM	PCM	PCM
Software Version	5.28	5.28	5.28	5.28	5.28
PIC Software Version	1.40	1.40	1.40	1.40	1.40
Sub/HOC Serial Number	11149805	11149805	11130241	11130241	11130241
Insert/Probe/Module SN	11400905	10868851	10868851	11400905	10868851
Battery Serial Number	N/A	N/A	N/A	N/A	N/A
Valve Insert SN	N/A	N/A	N/A	N/A	N/A
DC Insert Serial Number	N/A	N/A	N/A	N/A	N/A
Choke Size (32nd)	N/A	N/A	N/A	N/A	N/A
Driver Current (amps)	N/A	N/A	N/A	N/A	N/A
Driver SMI Current (amps)	N/A	N/A	N/A	N/A	N/A
Boot Strap Version	4,130.00	4,130.00	4,130.00	4,130.00	4,130.00

WELL INFORMATION

MWD Run Number	700			
Date run completed	20-Sep-12			
Rig Bit Number	0700			
Bit Size (in)	6.125			
Tool Nominal OD (in)	4.750			
Log Start Depth (MD, ft)	7,788.00			
Log End Depth (MD, ft)	9,880.00			
Drill or Wipe	Drill			
Drill/Wipe Start Date and Time	16-Sep-12 21:13			
Drill/Wipe End Date and Time	19-Sep-12 12:42			
Min Inc (deg) @ Depth (MD, ft)	88.37 @ 8,099.00			
Max Inc (deg) @ Depth (MD, ft)	91.97 @ 8,288.00			
Bit TFA(in2) / Bit Type	.64 / PDC			
Flow Rate (gpm)	300.00			
Max AV (fpm) / CV (fpm) @ MWD	490.0 / 498.0			
Fluid Type	Fresh Water Gel			

Density (ppg) / Viscosity (spqt)	8.40 / 30.00			
Filtrate CL (ppm)	2,700.00			
pH / Fluid Loss (mptm)	11.20 / 5			
PV (cP) / YP (lhf2)	1 / 2.00			
% Solids / % Sand	1.00 / 1.00			
% Oil / Oil:Water Ratio	N/A / N/A			
Rm @ Measured Temp (degF)	N/A @ N/A			
Rmf @ Measured Temp (degF)	N/A @ N/A			
Rmc @ Measured Temp (degF)	N/A @ N/A			
Max Tool Temp (degF) / Source	142.25 / PCM			
Rm @ Max Tool Temp (degF)	N/A @ N/A			
Lead MWD Engineer	Fred Martin			
Customer Representative	John Dyer			

SENSOR INFORMATION

Directional Sensor Information

Tool Type	PCDC			
Distance From Bit (ft)	57.17			
Software Version	6.21			
Sub Serial Number	11130241			
Sonde Serial Number	400471			
Sensor ID Number	N/A			
Toolface Offset (deg)	248.19			

Gamma Ray Sensor Information

Tool Type	PCG			
Distance From Bit (ft)	52.07			
Recorded Sample Period (sec)	15			
Software Version	8.15			
Sub Serial Number	11130241			
Insert/Sonde Serial Number	11293316			

Pulser Controller Sensor Information

Tool Type	PCM			
Software Version	5.28			
PIC Software Version	1.40			
Sub/HOC Serial Number	11130241			
Insert/Probe/Module SN	11400905			
Battery Serial Number	N/A			
Valve Insert SN	N/A			
DC Insert Serial Number	N/A			
Choke Size (32nd)	N/A			
Driver Current (amps)	N/A			
Driver SMI Current (amps)	N/A			
Boot Strap Version	4,130.00			

REMARKS

1. All depths are calibrated to the driller's pipe tally and are measured from the rotary table.
2. No depth corrections have been made for pipe stretch or compression.
3. All data presented is recorded (memory data) unless otherwise stated.

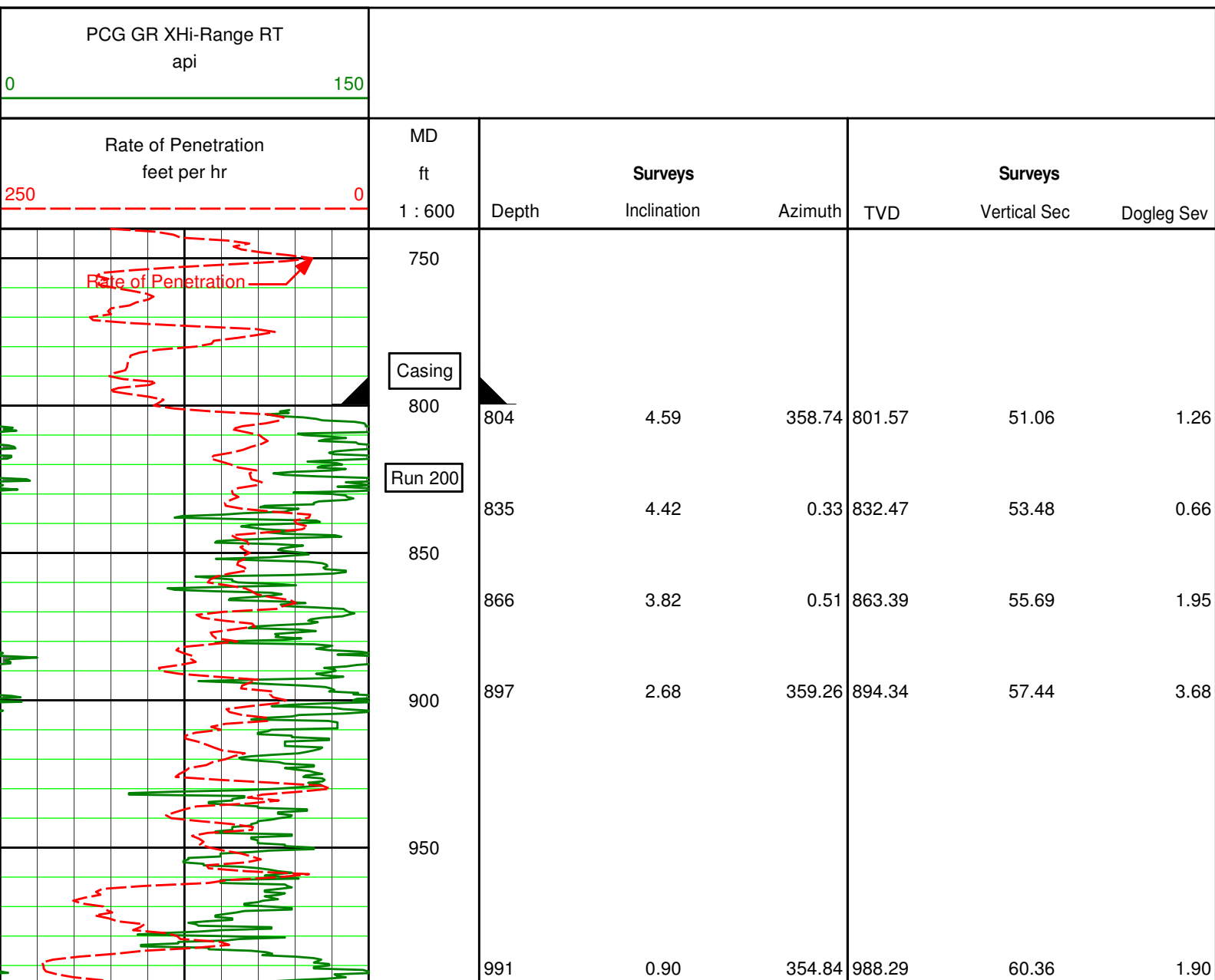
4. The following smoothing parameters have been applied to the data:

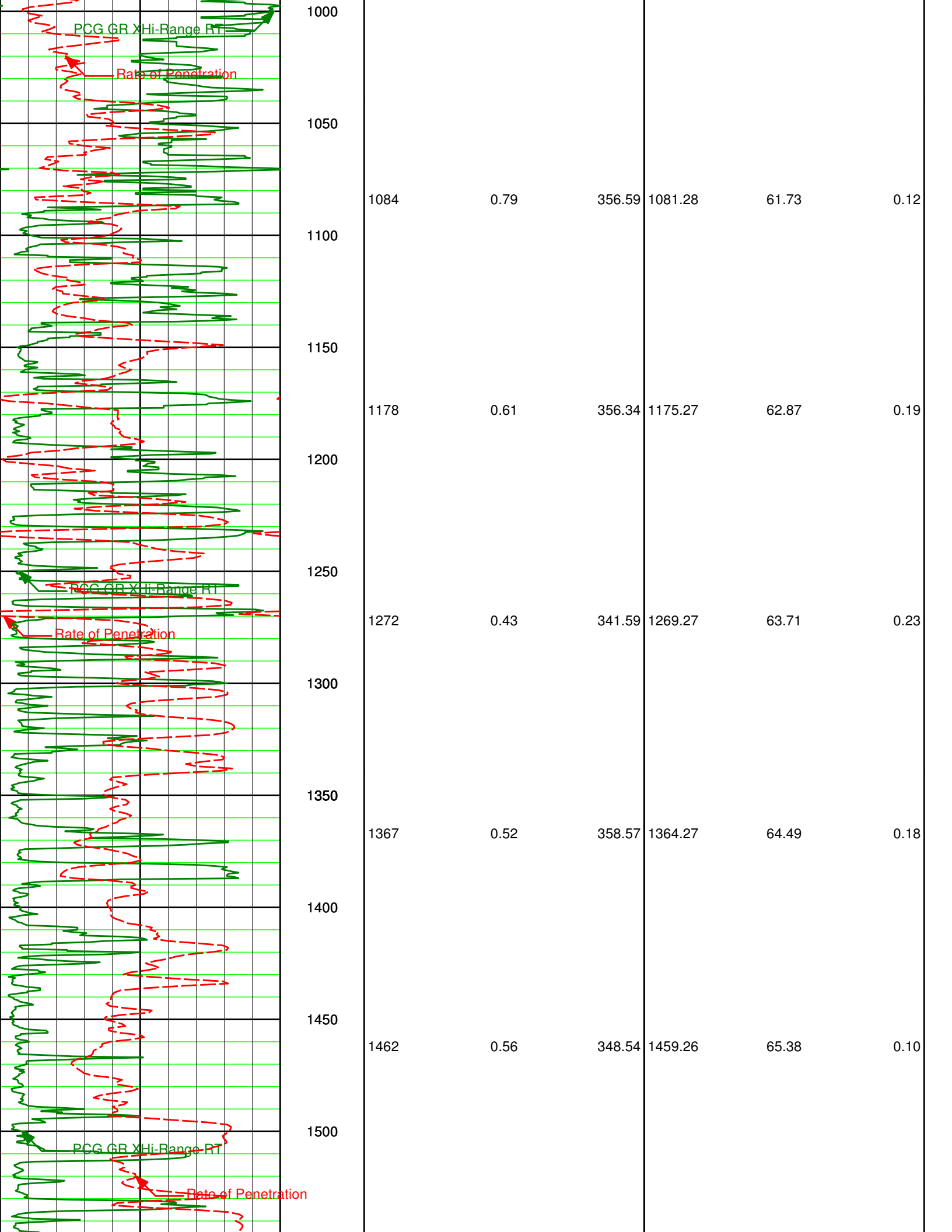
- ROP: 1.0 ft interval, 3.0 ft coercion distance.
- GAMMA: 0.5 ft interval, 0.6 ft coercion distance.

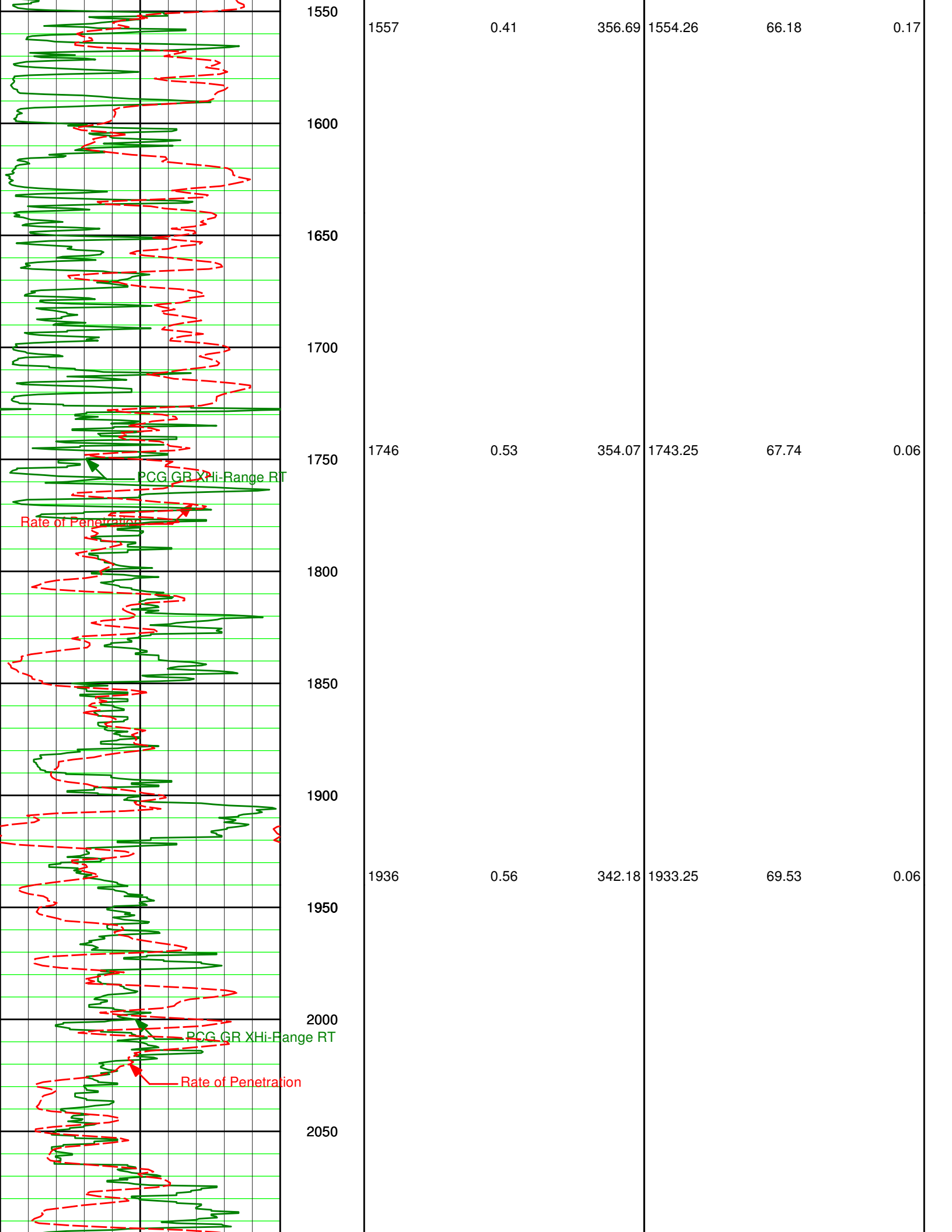
5. Run 100 was directional only.

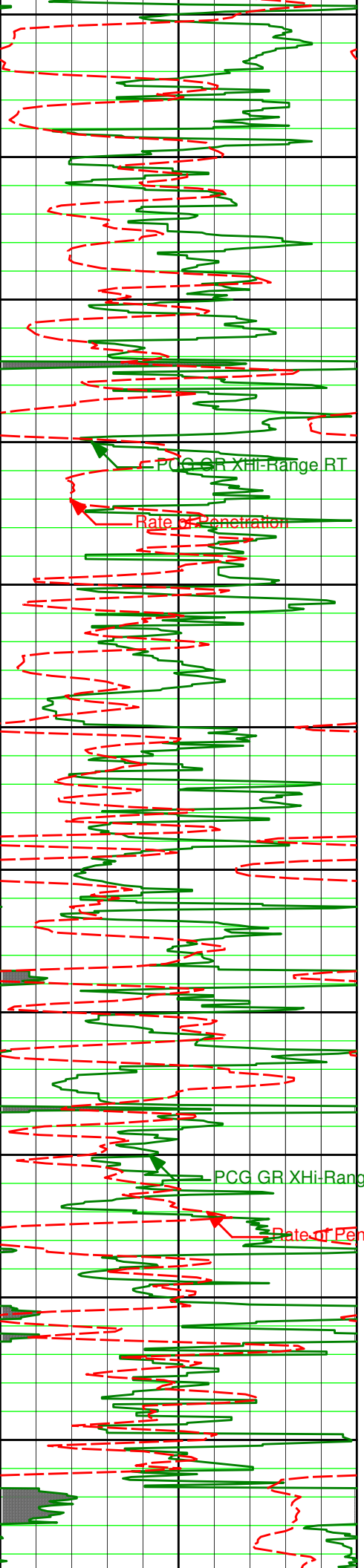
WARRANTY

HALLIBURTON WILL USE ITS BEST EFFORTS TO FURNISH CUSTOMERS WITH ACCURATE INFORMATION AND INTERPRETATIONS THAT ARE PART OF, AND INCIDENT TO, THE SERVICES PROVIDED. HOWEVER, HALLIBURTON CANNOT AND DOES NOT WARRANT THE ACCURACY OR CORRECTNESS OF SUCH INFORMATION AND INTERPRETATIONS. UNDER NO CIRCUMSTANCES SHOULD ANY SUCH INFORMATION OR INTERPRETATION BE RELIED UPON AS THE SOLE BASIS FOR ANY DRILLING, COMPLETION, PRODUCTION, OR FINANCIAL DECISION OR ANY PROCEDURE INVOLVING ANY RISK TO THE SAFETY OF ANY DRILLING VENTURE, DRILLING RIG OR ITS CREW OR ANY OTHER THIRD PARTY. THE CUSTOMER HAS FULL RESPONSIBILITY FOR ALL DRILLING, COMPLETION AND PRODUCTION OPERATION. HALLIBURTON MAKES NO REPRESENTATIONS OR WARRANTIES, EITHER EXPRESSED OR IMPLIED, INCLUDING, BUT NOT LIMITED TO, THE IMPLIED WARRANTIES OF MERCHANTABILITY OR FITNESS FOR A PARTICULAR PURPOSE, WITH RESPECT TO THE SERVICES RENDERED. IN NO EVENT WILL HALLIBURTON BE LIABLE FOR FAILURE TO OBTAIN ANY PARTICULAR RESULTS OR FOR ANY DAMAGES, INCLUDING, BUT NOT LIMITED TO, INDIRECT, SPECIAL OR CONSEQUENTIAL DAMAGES, RESULTING FROM THE USE OF ANY INFORMATION OR INTERPRETATION PROVIDED BY HALLIBURTON.

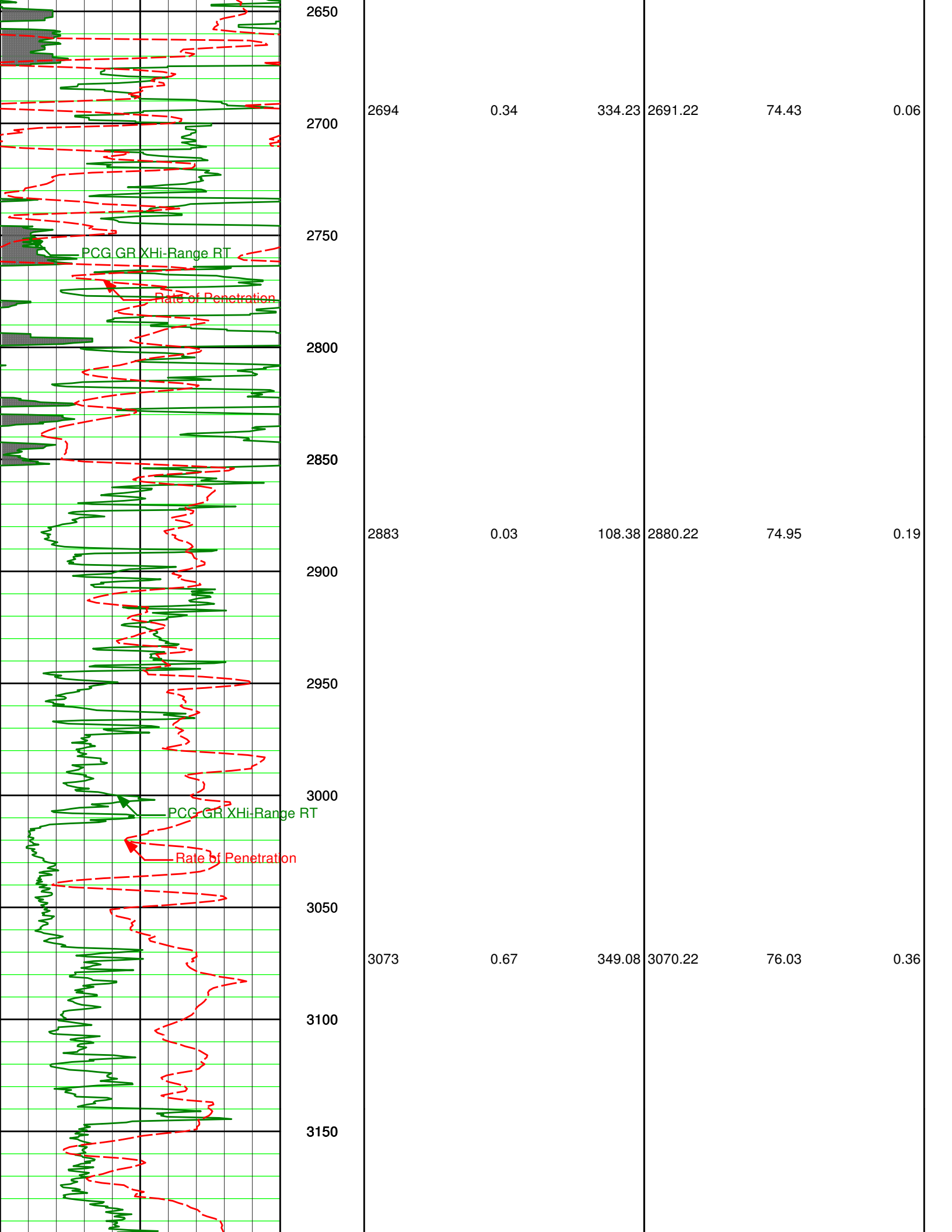


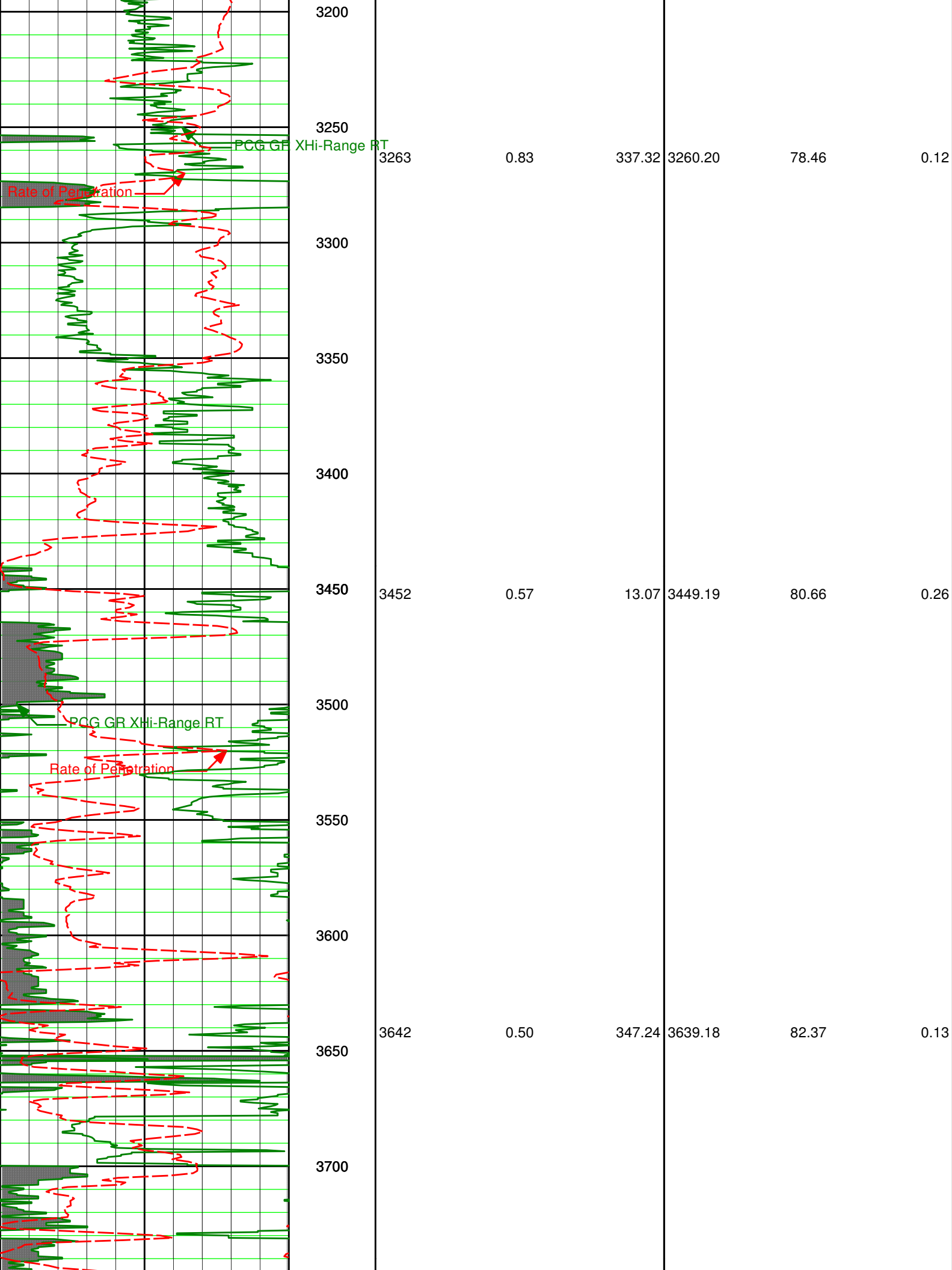


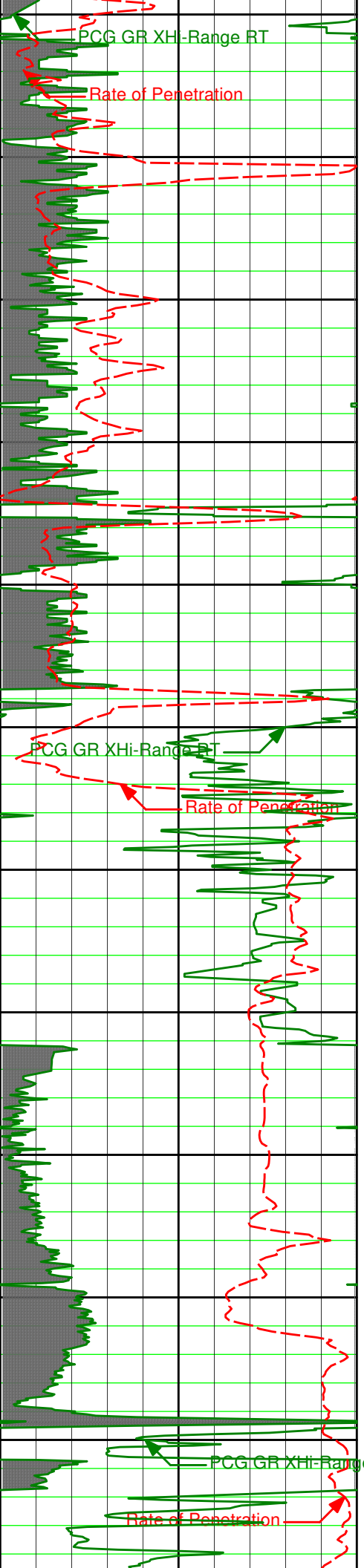




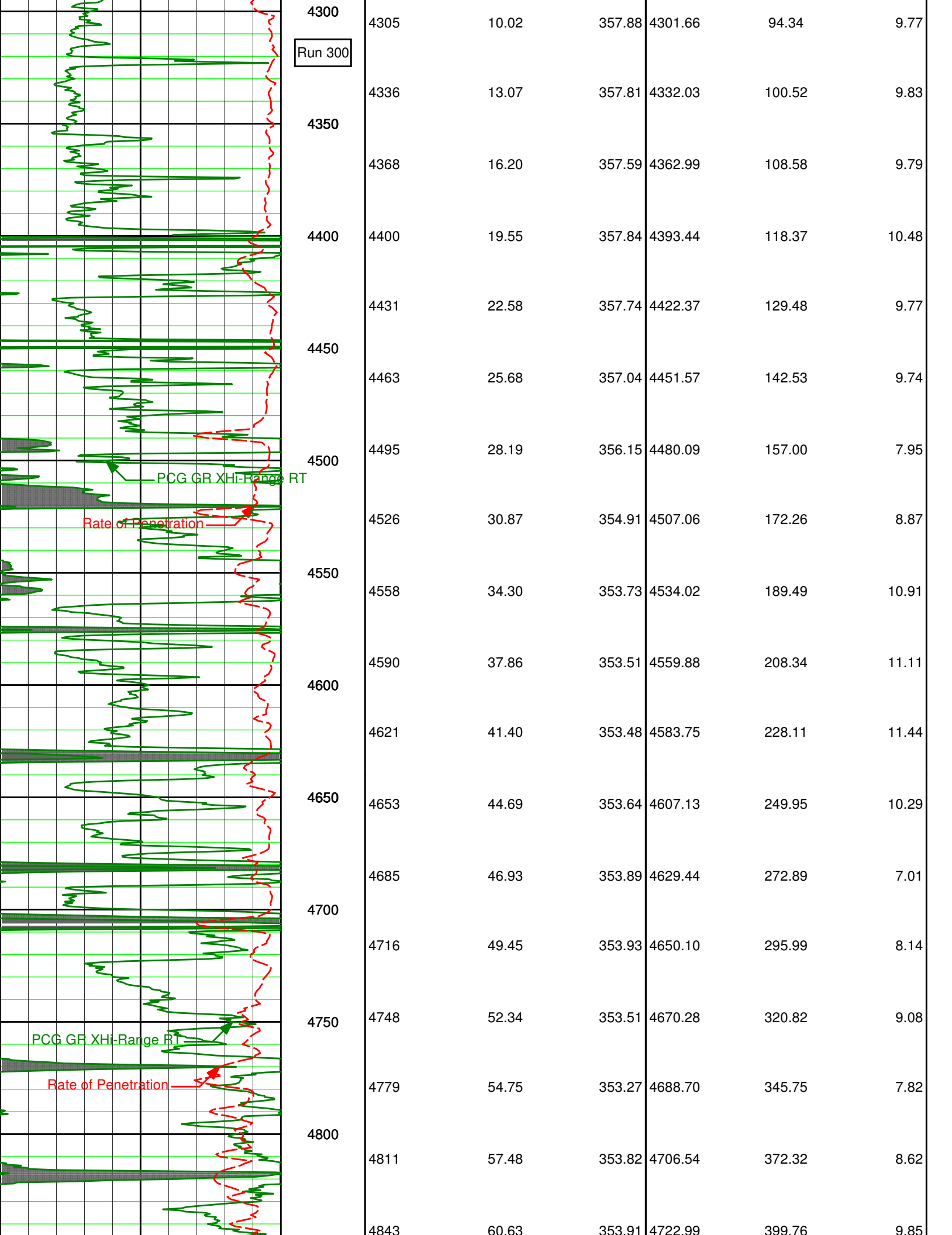
2100					
2126	0.18	22.00	2123.24	70.71	0.23
2150					
2200					
2250					
2300					
2315	0.65	313.71	2312.24	71.79	0.32
2350					
2400					
2450					
2500					
2505	0.44	324.80	2502.23	73.26	0.12
2550					
2600					

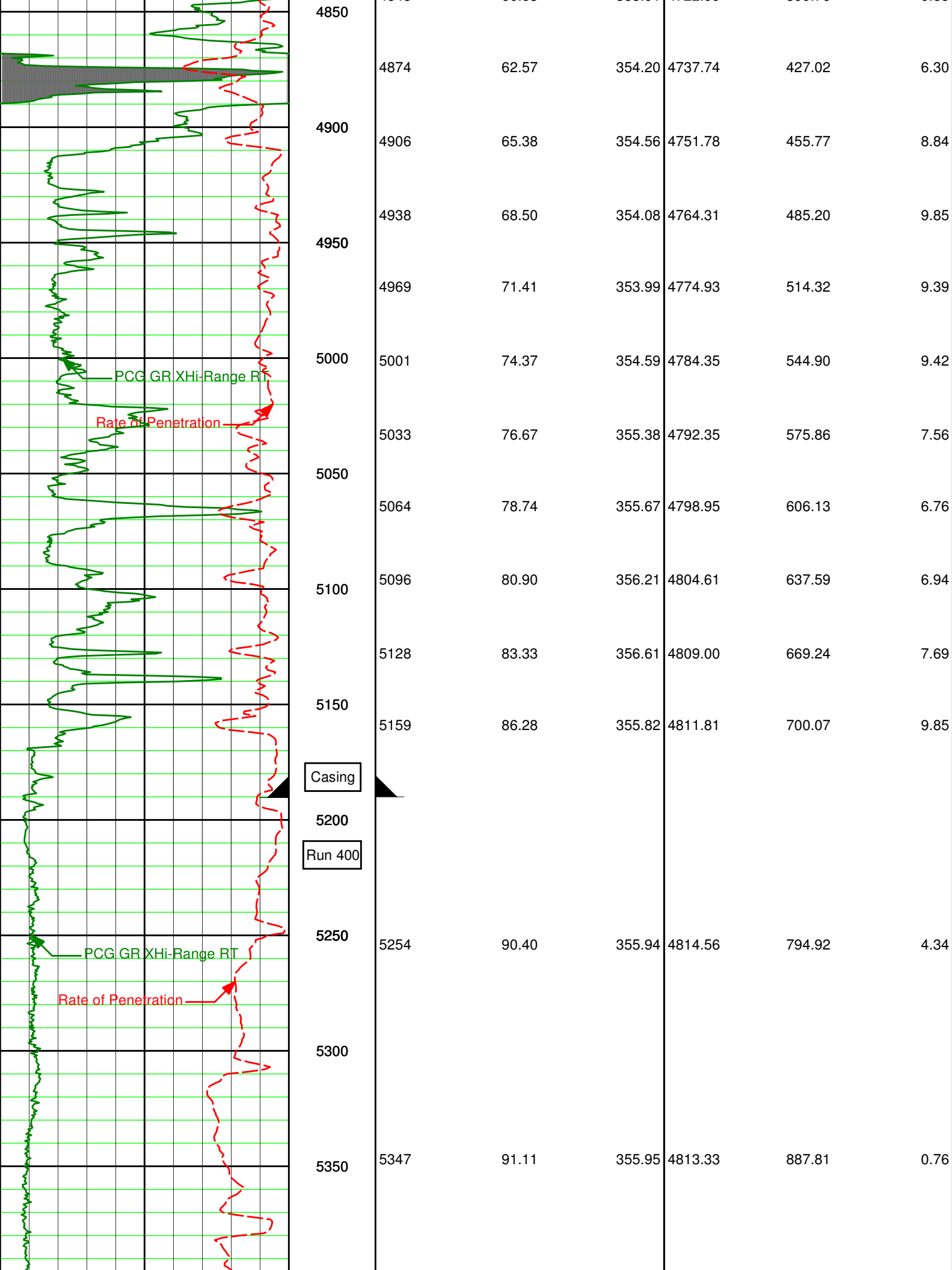


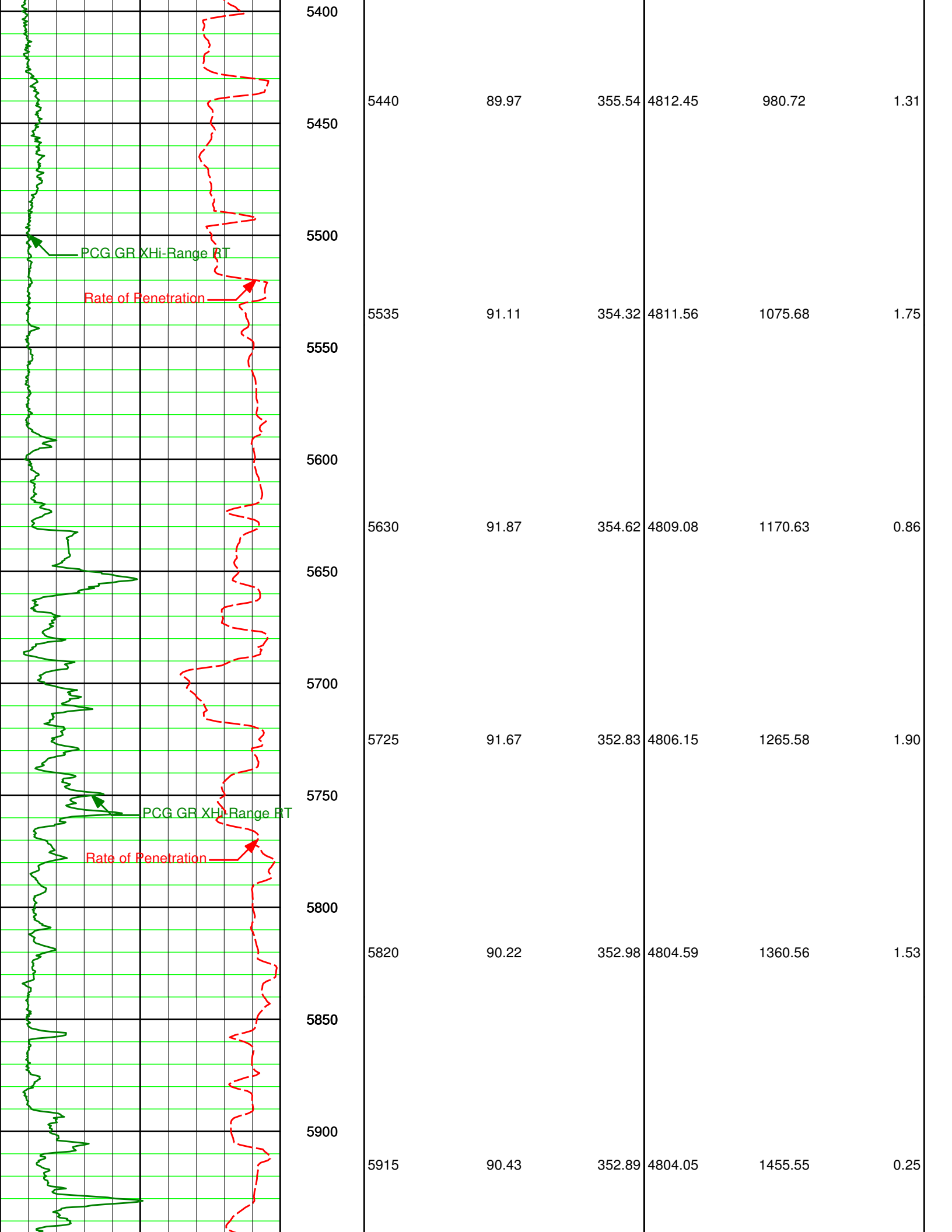


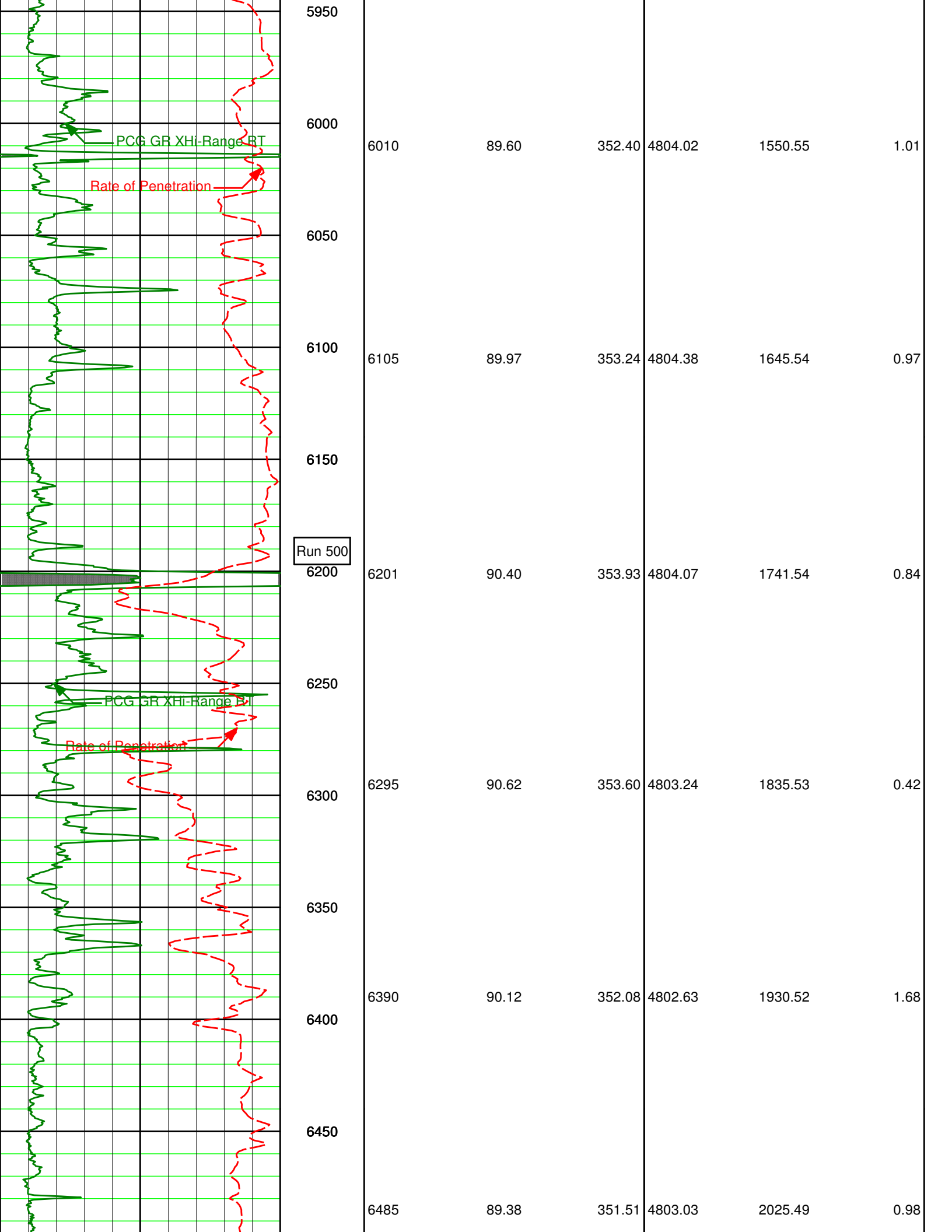


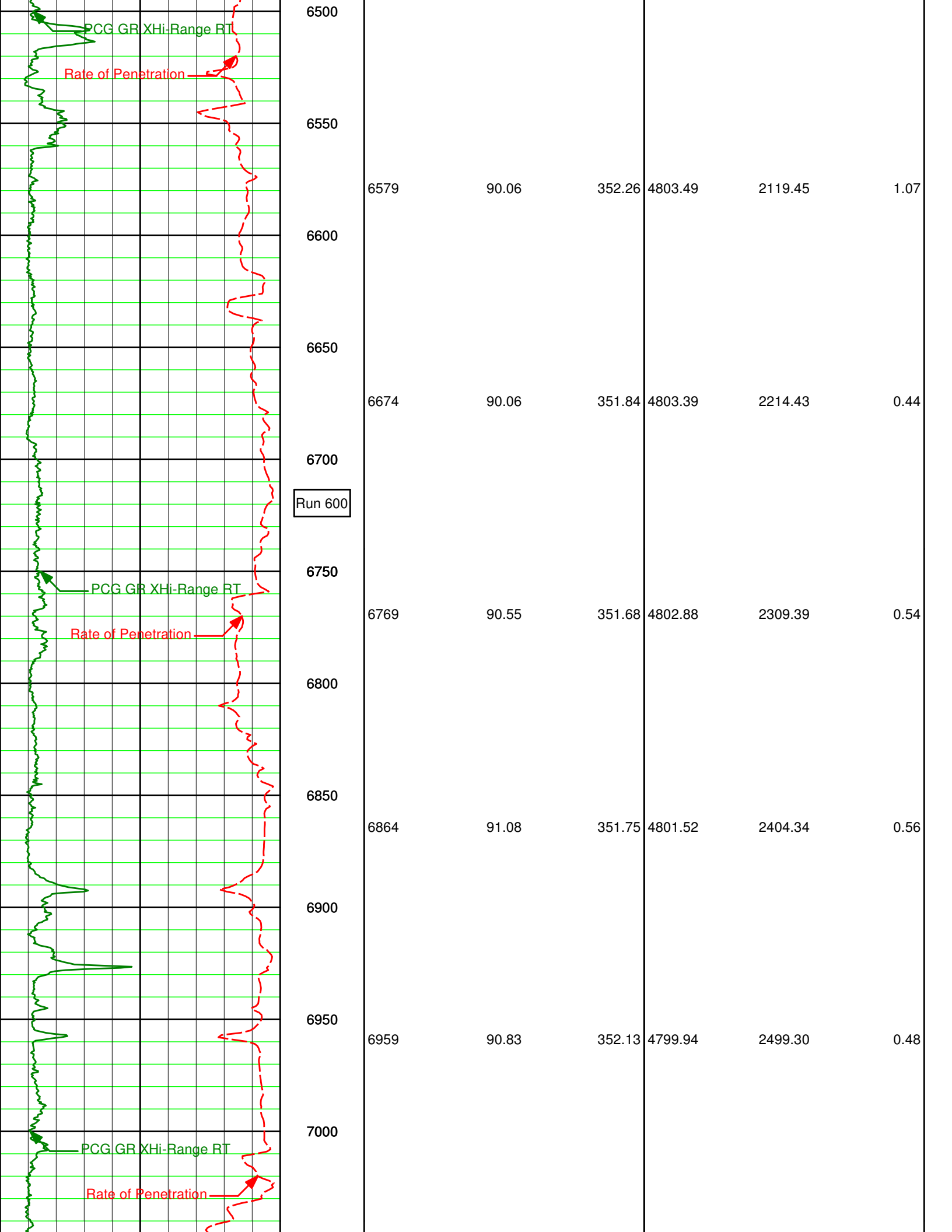
3750					
3800					
3832	0.31	332.57	3829.18	83.68	0.11
3850					
3900					
3950					
4000					
4022	0.22	306.56	4019.17	84.42	0.08
4050					
4100					
4150					
4200					
4212	0.69	9.68	4209.17	85.77	0.33
4243	3.63	2.18	4240.14	86.92	9.50
4250					
4273	6.89	358.51	4270.01	89.65	10.92

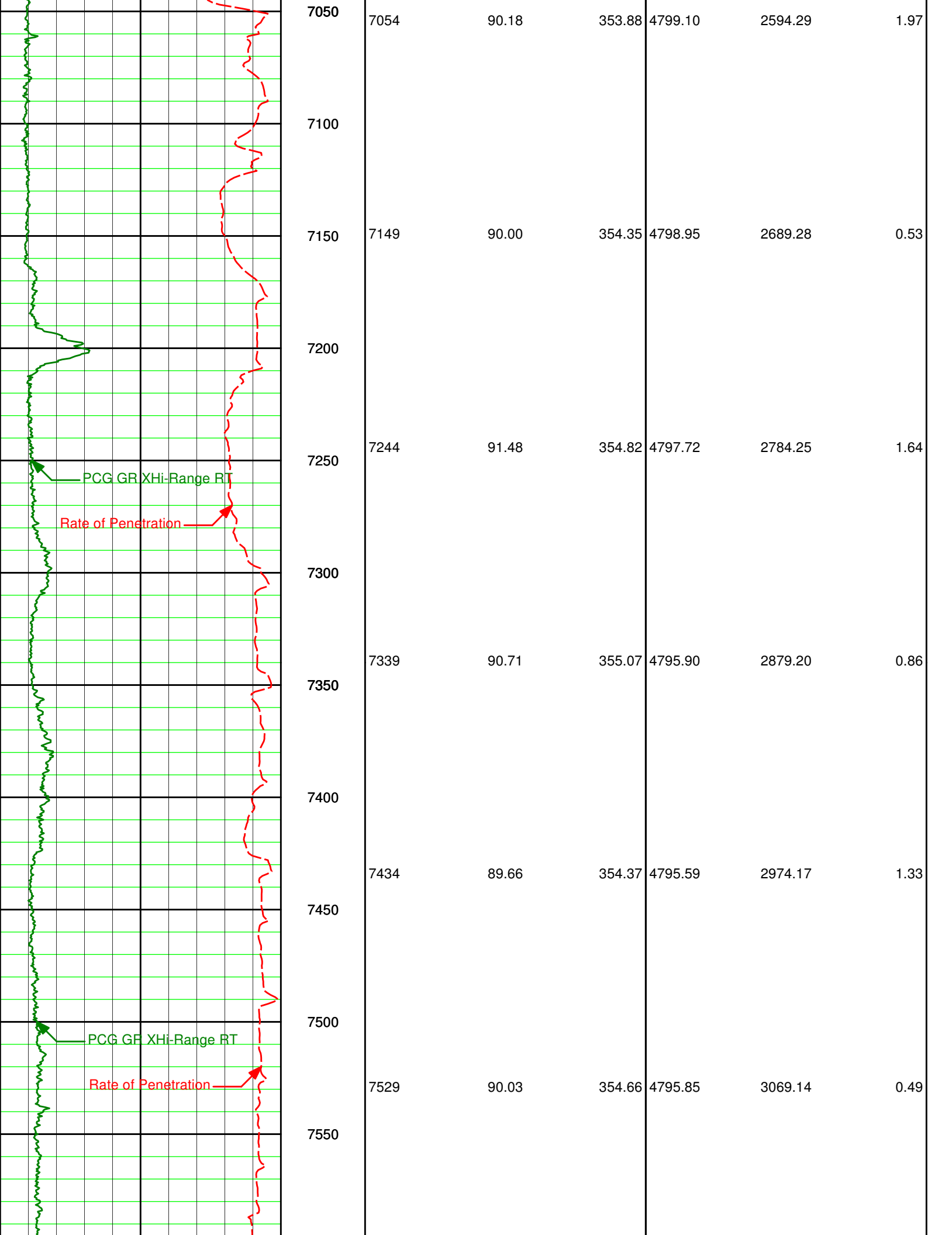












7054 7054 90.18 353.88 4799.10 2594.29 1.97

7100

7149 7149 90.00 354.35 4798.95 2689.28 0.53

7200

7244 7244 91.48 354.82 4797.72 2784.25 1.64

PCG GR XHi-Range RT

Rate of Penetration

7300

7339 7339 90.71 355.07 4795.90 2879.20 0.86

7350

7400

7434 7434 89.66 354.37 4795.59 2974.17 1.33

7450

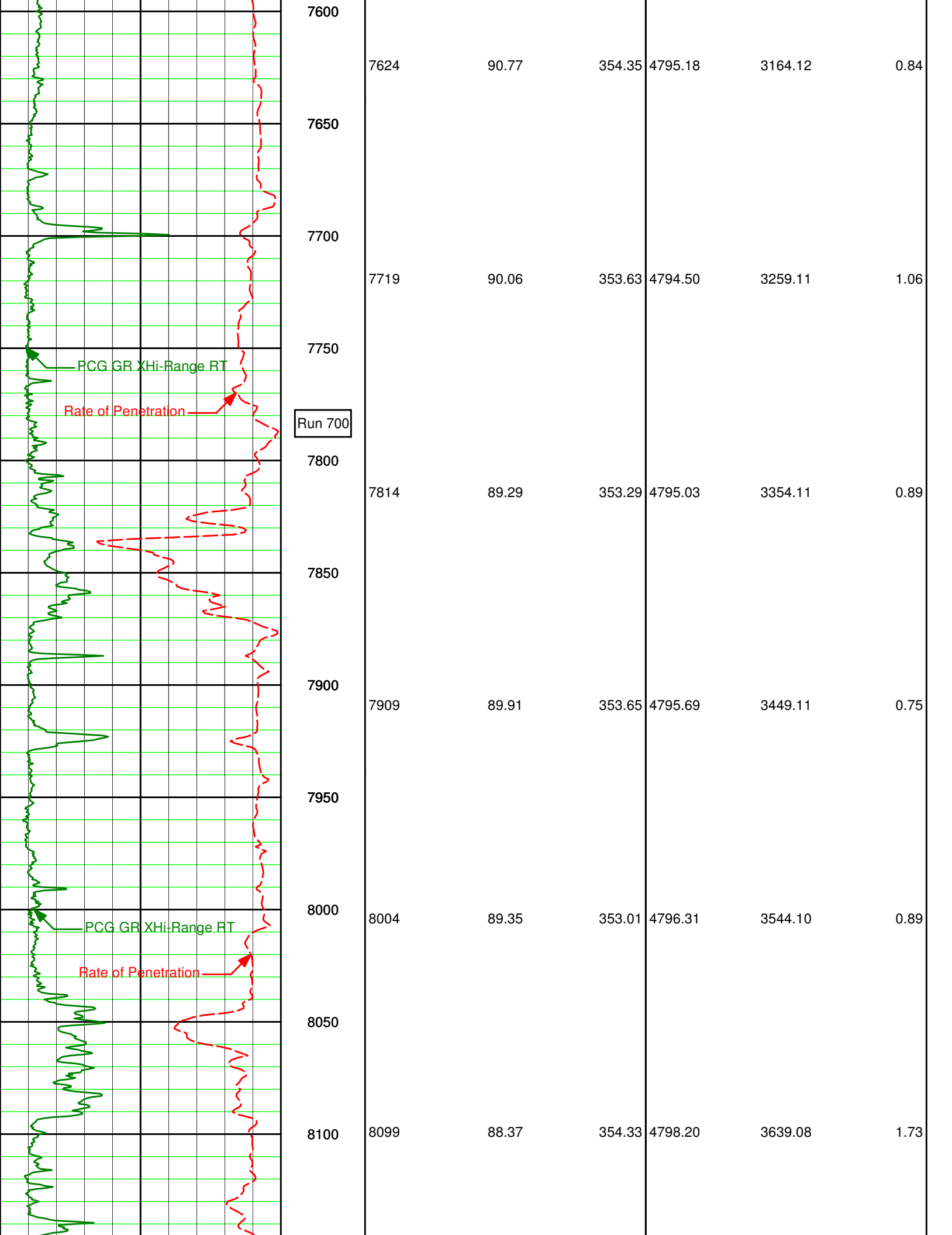
PCG GR XHi-Range RT

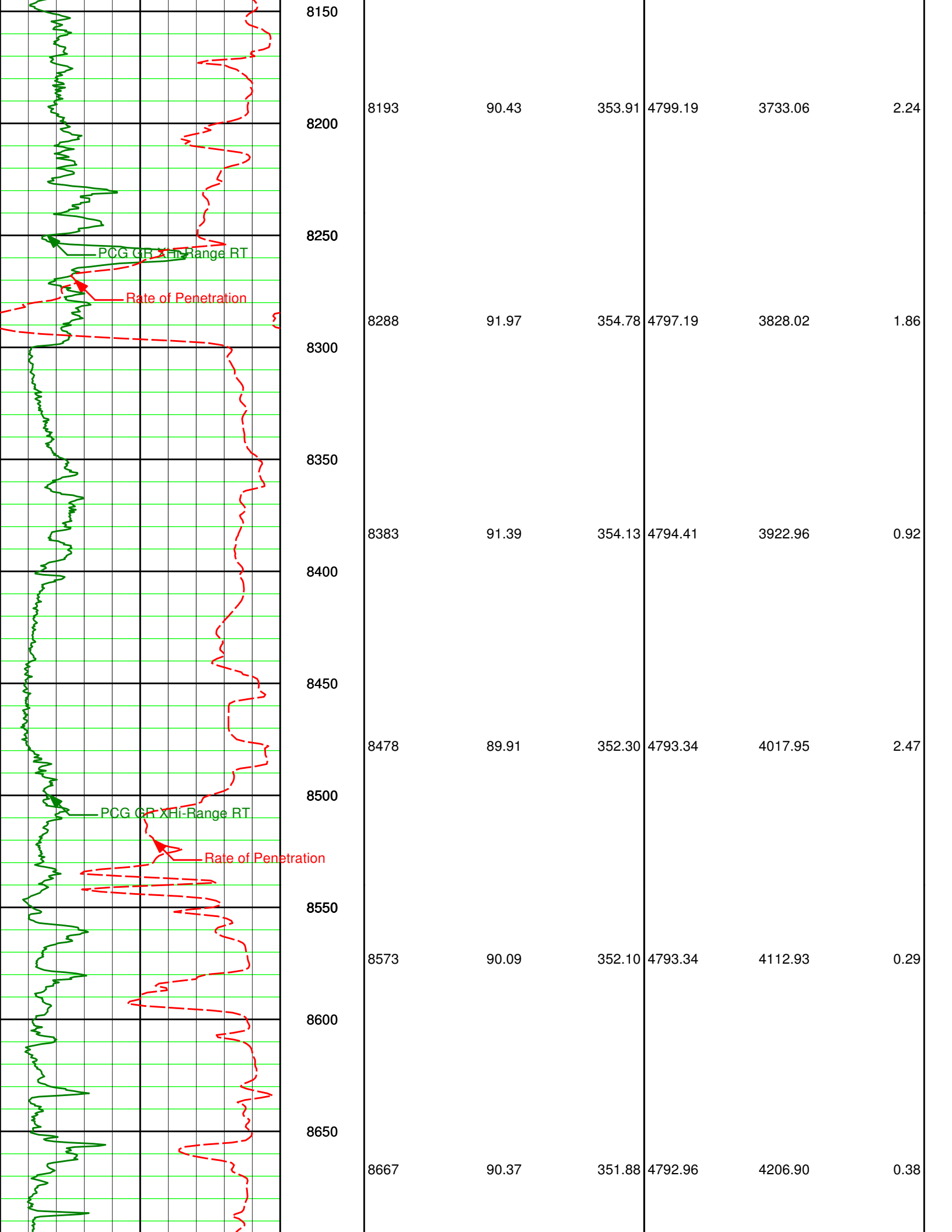
Rate of Penetration

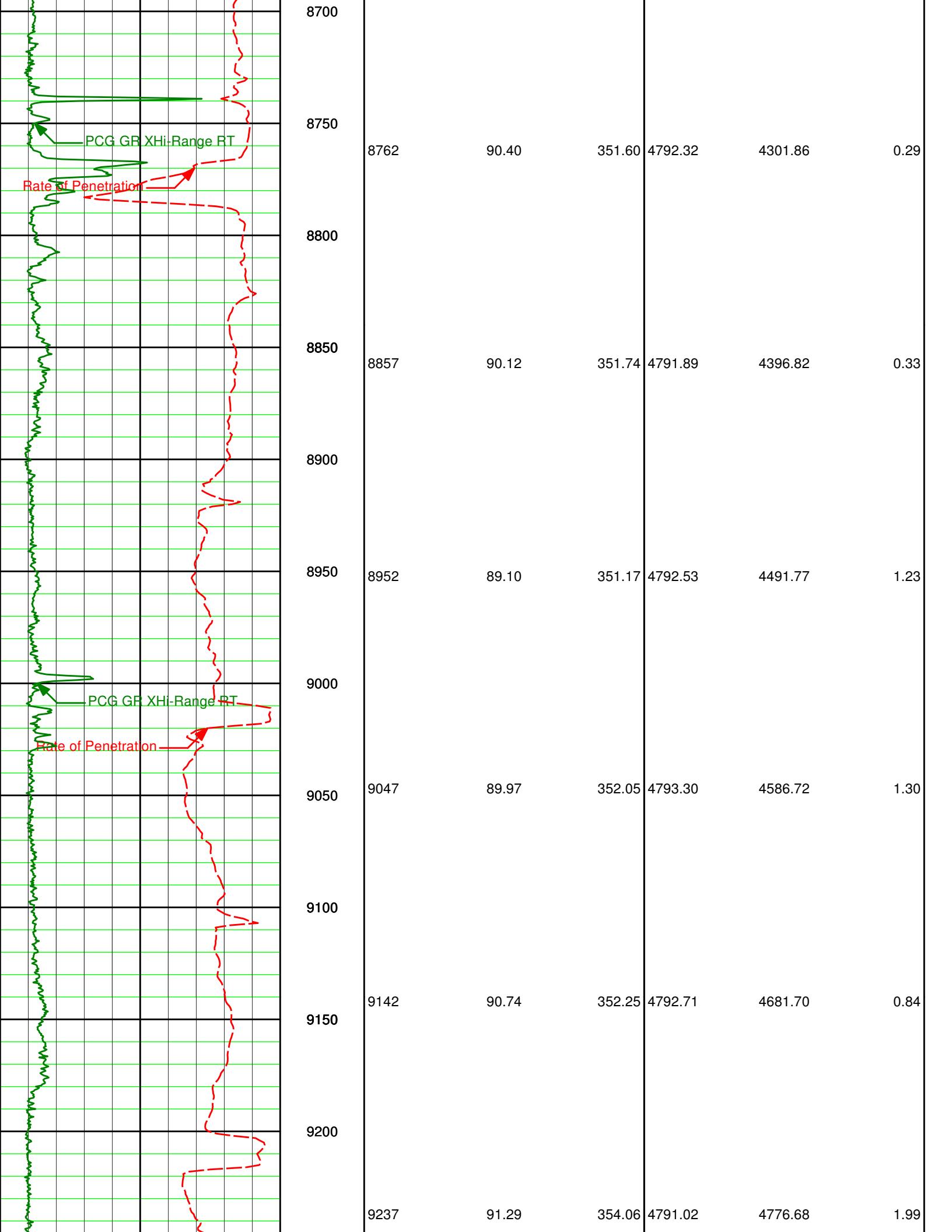
7500

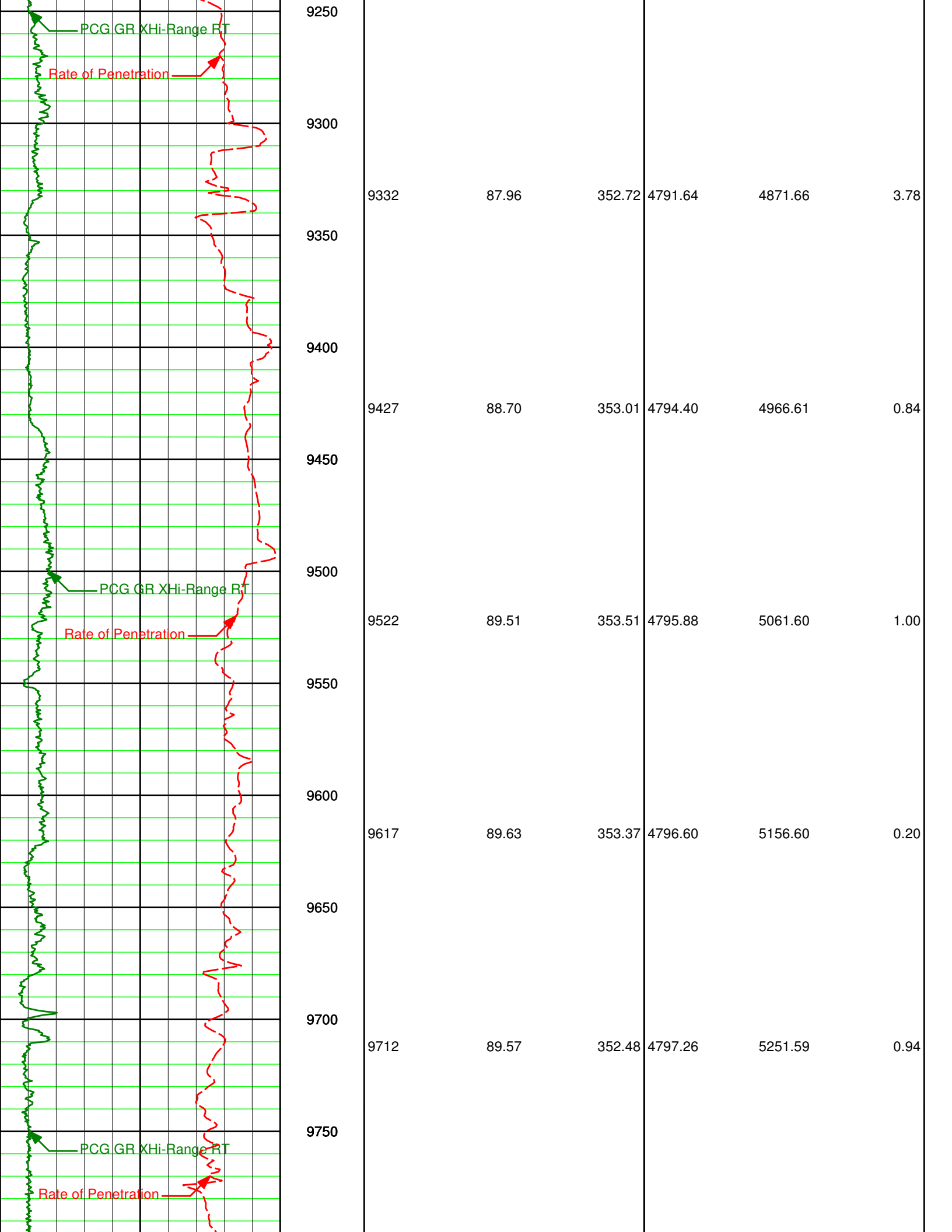
7529 7529 90.03 354.66 4795.85 3069.14 0.49

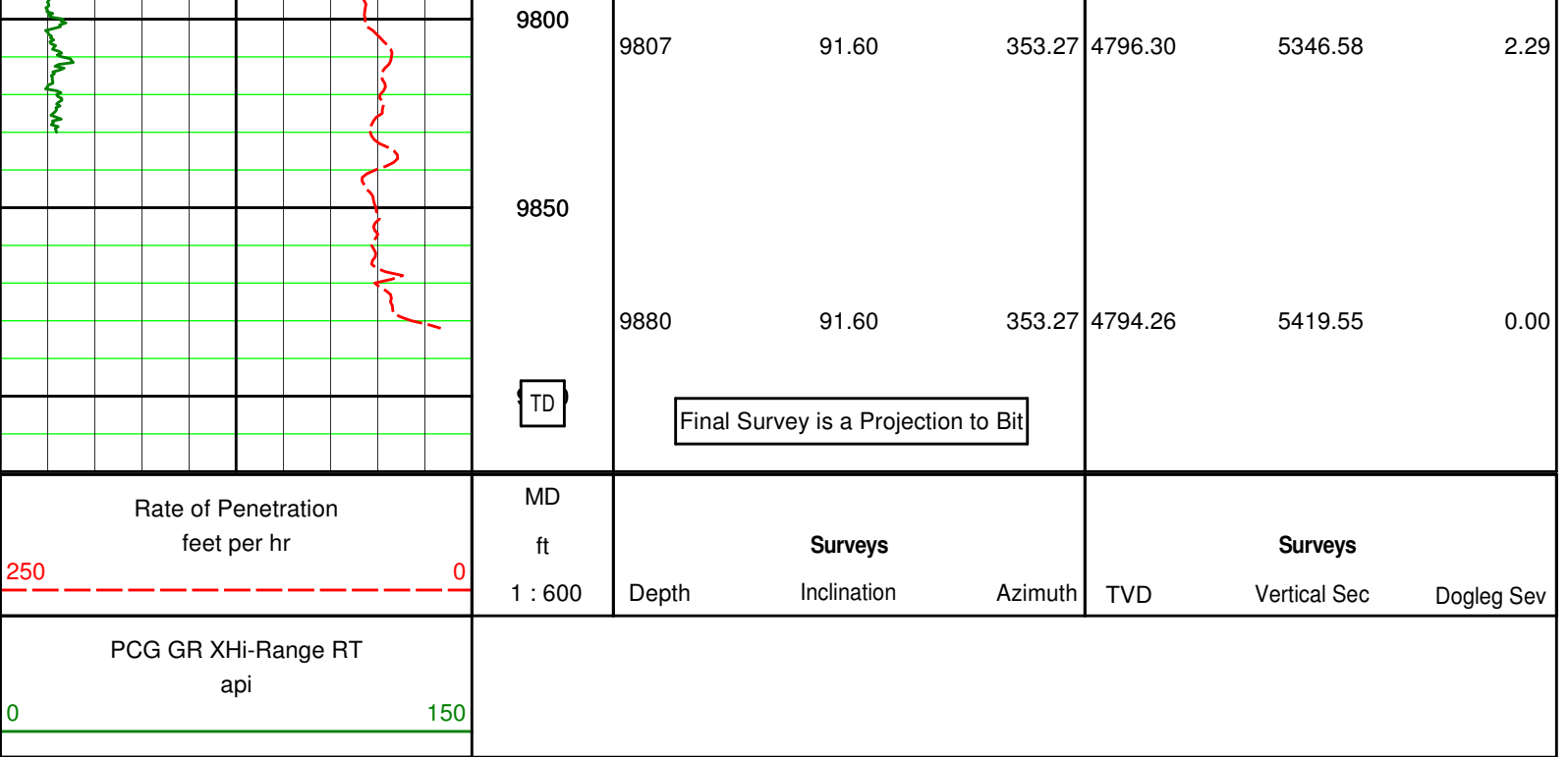
7550











HALLIBURTON

DIRECTIONAL SURVEY REPORT

Shell Exploration and Production
Schubach 3510 #4-1H
Arrowhead
Barber KS
USA

OK-XX-0009504797

Surveys from 0' MD to 9,880' are provided by Halliburton Sperry Drilling Services.
Final Survey is a projection to the bit.

Measured Depth (feet)	Inclination (degrees)	Direction (degrees)	Vertical Depth (feet)	Latitude (feet)	Departure (feet)	Vertical Section (feet)	Dogleg (deg/100ft)
0.00	0.00	0.00	0.00	0.00 N	0.00 E	0.00	TIE-IN
80.00	0.31	239.54	80.00	0.11 S	0.19 W	-0.09	0.39
142.00	0.51	111.31	142.00	0.29 S	0.07 W	-0.28	1.20
172.00	0.64	87.19	172.00	0.33 S	0.22 E	-0.36	0.92
202.00	0.86	43.88	201.99	0.16 S	0.54 E	-0.23	1.97
234.00	1.41	21.30	233.99	0.38 N	0.85 E	0.28	2.19
269.00	2.25	2.08	268.97	1.47 N	1.03 E	1.34	2.93
300.00	3.38	358.41	299.93	2.99 N	1.03 E	2.85	3.69
331.00	4.33	353.54	330.86	5.06 N	0.87 E	4.93	3.25
362.00	4.92	352.41	361.76	7.55 N	0.57 E	7.43	1.93
394.00	5.30	351.83	393.63	10.37 N	0.17 E	10.28	1.19
425.00	5.84	348.62	424.49	13.33 N	0.34 W	13.28	1.99
456.00	6.31	345.58	455.31	16.53 N	1.08 W	16.54	1.86
488.00	6.39	345.19	487.12	19.96 N	1.97 W	20.05	0.27
519.00	6.43	344.50	517.92	23.30 N	2.87 W	23.47	0.29
613.00	5.78	351.18	611.39	33.05 N	5.01 W	33.41	1.02
706.00	5.42	351.34	703.95	42.02 N	6.39 W	42.48	0.40
733.00	5.25	351.70	730.83	44.50 N	6.76 W	44.99	0.64
804.00	4.59	358.74	801.57	50.55 N	7.29 W	51.06	1.26
835.00	4.42	0.33	832.47	52.99 N	7.31 W	53.48	0.66
866.00	3.82	0.51	863.39	55.22 N	7.29 W	55.69	1.95
897.00	2.68	359.26	894.34	56.98 N	7.29 W	57.44	3.68
991.00	0.90	354.84	988.29	59.91 N	7.39 W	60.36	1.90
1084.00	0.79	356.59	1081.28	61.27 N	7.49 W	61.73	0.12
1178.00	0.61	356.34	1175.27	62.41 N	7.56 W	62.87	0.19

1272.00	0.43	341.59	1269.27	63.24 N	7.70 W	63.71	0.23
1367.00	0.52	358.57	1364.27	64.01 N	7.83 W	64.49	0.18
1462.00	0.56	348.54	1459.26	64.90 N	7.93 W	65.38	0.10
1557.00	0.41	356.69	1554.26	65.69 N	8.04 W	66.18	0.17
1746.00	0.53	354.07	1743.25	67.25 N	8.17 W	67.74	0.06
1936.00	0.56	342.18	1933.25	69.01 N	8.55 W	69.53	0.06
2126.00	0.18	22.00	2123.24	70.17 N	8.72 W	70.71	0.23
2315.00	0.65	313.71	2312.24	71.19 N	9.38 W	71.79	0.32
2505.00	0.44	324.80	2502.23	72.53 N	10.58 W	73.26	0.12
2694.00	0.34	334.23	2691.22	73.63 N	11.25 W	74.43	0.06
2883.00	0.03	108.38	2880.22	74.12 N	11.45 W	74.95	0.19
3073.00	0.67	349.08	3070.22	75.19 N	11.61 W	76.03	0.36
3263.00	0.83	337.32	3260.20	77.55 N	12.35 W	78.46	0.12
3452.00	0.57	13.07	3449.19	79.73 N	12.66 W	80.66	0.26
3642.00	0.50	347.24	3639.18	81.46 N	12.63 W	82.37	0.13
3832.00	0.31	332.57	3829.18	82.73 N	13.05 W	83.68	0.11
4022.00	0.22	306.56	4019.17	83.40 N	13.59 W	84.42	0.08
4212.00	0.69	9.68	4209.17	84.76 N	13.69 W	85.77	0.33
4243.00	3.63	2.18	4240.14	85.92 N	13.62 W	86.92	9.50
4273.00	6.89	358.51	4270.01	88.67 N	13.64 W	89.65	10.92
4305.00	10.02	357.88	4301.66	93.37 N	13.79 W	94.34	9.77
4336.00	13.07	357.81	4332.03	99.57 N	14.02 W	100.52	9.83
4368.00	16.20	357.59	4362.99	107.65 N	14.35 W	108.58	9.79
4400.00	19.55	357.84	4393.44	117.46 N	14.74 W	118.37	10.48
4431.00	22.58	357.74	4422.37	128.59 N	15.17 W	129.48	9.77
4463.00	25.68	357.04	4451.57	141.65 N	15.77 W	142.53	9.74
4495.00	28.19	356.15	4480.09	156.12 N	16.63 W	157.00	7.95
4526.00	30.87	354.91	4507.06	171.35 N	17.83 W	172.26	8.87
4558.00	34.30	353.73	4534.02	188.50 N	19.54 W	189.49	10.91
4590.00	37.86	353.51	4559.88	207.22 N	21.64 W	208.34	11.11
4621.00	41.40	353.48	4583.75	226.87 N	23.88 W	228.11	11.44
4653.00	44.69	353.64	4607.13	248.57 N	26.33 W	249.95	10.29
4685.00	46.93	353.89	4629.44	271.38 N	28.82 W	272.89	7.01
4716.00	49.45	353.93	4650.10	294.35 N	31.27 W	295.99	8.14
4748.00	52.34	353.51	4670.28	319.03 N	33.99 W	320.82	9.08
4779.00	54.75	353.27	4688.70	343.80 N	36.86 W	345.75	7.82
4811.00	57.48	353.82	4706.54	370.19 N	39.85 W	372.32	8.62
4843.00	60.63	353.91	4722.99	397.48 N	42.78 W	399.76	9.85
4874.00	62.57	354.20	4737.74	424.60 N	45.60 W	427.02	6.30
4906.00	65.38	354.56	4751.78	453.21 N	48.42 W	455.77	8.84
4938.00	68.50	354.08	4764.31	482.51 N	51.33 W	485.20	9.85
4969.00	71.41	353.99	4774.93	511.47 N	54.36 W	514.32	9.39
5001.00	74.37	354.59	4784.35	541.90 N	57.40 W	544.90	9.42
5033.00	76.67	355.38	4792.35	572.76 N	60.11 W	575.86	7.56
5064.00	78.74	355.67	4798.95	602.95 N	62.47 W	606.13	6.76
5096.00	80.90	356.21	4804.61	634.37 N	64.70 W	637.59	6.94
5128.00	83.33	356.61	4809.00	666.00 N	66.68 W	669.24	7.69
5159.00	86.28	355.82	4811.81	696.80 N	68.72 W	700.07	9.85
5254.00	90.40	355.94	4814.56	791.50 N	75.54 W	794.92	4.34
5347.00	91.11	355.95	4813.33	884.26 N	82.11 W	887.81	0.76
5440.00	89.97	355.54	4812.45	976.99 N	89.01 W	980.72	1.31
5535.00	91.11	354.32	4811.56	1071.61 N	97.40 W	1075.68	1.75
5630.00	91.87	354.62	4809.08	1166.14 N	106.55 W	1170.63	0.86
5725.00	91.67	352.83	4806.15	1260.52 N	116.92 W	1265.58	1.90
5820.00	90.22	352.98	4804.59	1354.78 N	128.65 W	1360.56	1.53
5915.00	90.43	352.89	4804.05	1449.06 N	140.34 W	1455.55	0.25
6010.00	89.60	352.40	4804.02	1543.27 N	152.50 W	1550.55	1.01
6105.00	89.97	353.24	4804.38	1637.53 N	164.37 W	1645.54	0.97
6201.00	90.40	353.93	4804.07	1732.93 N	175.09 W	1741.54	0.84
6295.00	90.62	353.60	4803.24	1826.37 N	185.30 W	1835.53	0.42
6390.00	90.12	352.08	4802.63	1920.62 N	197.15 W	1930.52	1.68
6485.00	89.38	351.51	4803.03	2014.65 N	210.70 W	2025.49	0.98
6579.00	90.06	352.26	4803.49	2107.70 N	223.97 W	2119.45	1.07
6674.00	90.06	351.84	4803.39	2201.79 N	237.12 W	2214.43	0.44
6769.00	90.55	351.68	4802.88	2295.81 N	250.73 W	2309.39	0.54
6864.00	91.08	351.75	4801.52	2389.80 N	264.42 W	2404.34	0.56
6959.00	90.83	352.13	4799.94	2483.85 N	277.74 W	2499.30	0.48
7054.00	90.18	353.88	4799.10	2578.14 N	289.32 W	2594.29	1.97
7149.00	90.00	354.35	4798.95	2672.64 N	299.06 W	2689.28	0.53
7244.00	91.48	354.82	4797.72	2767.20 N	308.02 W	2784.25	1.64
7339.00	92.57	355.88	4796.48	2861.81 N	316.88 W	2879.24	2.38

7339.00	90.71	355.07	4795.90	2861.81 N	316.39 W	2879.20	0.86
7434.00	89.66	354.37	4795.59	2956.41 N	325.13 W	2974.17	1.33
7529.00	90.03	354.66	4795.85	3050.97 N	334.21 W	3069.14	0.49
7624.00	90.77	354.35	4795.18	3145.53 N	343.31 W	3164.12	0.84
7719.00	90.06	353.63	4794.50	3240.01 N	353.26 W	3259.11	1.06
7814.00	89.29	353.29	4795.03	3334.39 N	364.08 W	3354.11	0.89
7909.00	89.91	353.65	4795.69	3428.77 N	374.88 W	3449.11	0.75
8004.00	89.35	353.01	4796.31	3523.12 N	385.91 W	3544.10	0.89
8099.00	88.37	354.33	4798.20	3617.52 N	396.38 W	3639.08	1.73
8193.00	90.43	353.91	4799.19	3711.02 N	406.01 W	3733.06	2.24
8288.00	91.97	354.78	4797.19	3805.53 N	415.37 W	3828.02	1.86
8383.00	91.39	354.13	4794.41	3900.04 N	424.55 W	3922.96	0.92
8478.00	89.91	352.30	4793.34	3994.36 N	435.77 W	4017.95	2.47
8573.00	90.09	352.10	4793.34	4088.49 N	448.66 W	4112.93	0.29
8667.00	90.37	351.88	4792.96	4181.57 N	461.75 W	4206.90	0.38
8762.00	90.40	351.60	4792.32	4275.58 N	475.40 W	4301.86	0.29
8857.00	90.12	351.74	4791.89	4369.58 N	489.17 W	4396.82	0.33
8952.00	89.10	351.17	4792.53	4463.52 N	503.29 W	4491.77	1.23
9047.00	89.97	352.05	4793.30	4557.50 N	517.15 W	4586.72	1.30
9142.00	90.74	352.25	4792.71	4651.60 N	530.12 W	4681.70	0.84
9237.00	91.29	354.06	4791.02	4745.91 N	541.45 W	4776.68	1.99
9332.00	87.96	352.72	4791.64	4840.26 N	552.39 W	4871.66	3.78
9427.00	88.70	353.01	4794.40	4934.48 N	564.19 W	4966.61	0.84
9522.00	89.51	353.51	4795.88	5028.81 N	575.34 W	5061.60	1.00
9617.00	89.63	353.37	4796.60	5123.19 N	586.19 W	5156.60	0.20
9712.00	89.57	352.48	4797.26	5217.46 N	597.88 W	5251.59	0.94
9807.00	91.60	353.27	4796.30	5311.72 N	609.66 W	5346.58	2.29
9880.00	91.60	353.27	4794.26	5384.18 N	618.21 W	5419.55	0.00

CALCULATION BASED ON MINIMUM CURVATURE METHOD

**SURVEY COORDINATES RELATIVE TO WELL SYSTEM REFERENCE POINT
TVD VALUES GIVEN RELATIVE TO DRILLING MEASUREMENT POINT**

**VERTICAL SECTION RELATIVE TO WELL HEAD
VERTICAL SECTION IS COMPUTED ALONG A DIRECTION OF 353.34 DEGREES (TRUE)
A TOTAL CORRECTION OF 4.88 DEG FROM MAGNETIC NORTH TO TRUE NORTH HAS BEEN APPLIED**

**HORIZONTAL DISPLACEMENT IS RELATIVE TO THE WELL HEAD.
HORIZONTAL DISPLACEMENT(CLOSURE) AT 9880.00 FEET
IS 5419.56 FEET ALONG 353.45 DEGREES (TRUE)**

Final Survey is a projection to the bit.