

LOG-TECH



DIGITAL LOG (785) 625-3858

Dual Induction Log

API No. 15-101-22390-00-00

Company **Larson Engineering, Inc.**
 Well **Shirley #2-10**
 Field **Wildcat**
 County **Lane** State **Kansas**

Location **698' FSL & 445' FEL**

Sec: **10** Twp: **18S** Rge: **30W**

Other Services
 CNL/CDL
 MEL

Permanent Datum	Ground Level	Elevation 2863	K.B. 2870
Log Measured From	Kelly Bushing	7 Ft. Above Perm. Datum	D.F. 2863
Drilling Measured From	Kelly Bushing		G.L. 2863
Date		7/21/2012	
Run Number		One	
Depth Driller		4640	
Depth Logger		4640	
Bottom Logged Interval		4639	
Top Log Interval		250	
Casing Driller		8.625 @ 262	
Casing Logger		258	
Bit Size		7.875	
Type Fluid in Hole		Chemical	
Salinity, ppm CL		2500	
Density / Viscosity		9.2 53	
pH / Fluid Loss		11.0 7.2	
Source of Sample		Flowline	
Rm @ Meas. Temp		1.20 @ 65	
Rmf @ Meas. Temp		0.90 @ 65	
Rmc @ Meas. Temp		1.62 @ 65	
Source of Rmf / Rmc		Charts	
Rm @ BHT		0.63 @ 124	
Operating Rig Time		4 Hours	
Max Rec. Temp. F		124	
Equipment Number		91	
Location		Hays	
Recorded By		D. Schmidt	
Witnessed By		Vern Schrag	

<<< Fold Here >>>

All interpretations are opinions based on inferences from electrical or other measurements and we cannot and do not guarantee the accuracy or correctness of any interpretation, and we shall not, except in the case of gross or willful negligence on our part, be liable or responsible for any loss, costs, damages, or expenses incurred or sustained by anyone resulting from any interpretation made by any of our officers, agents or employees. These interpretations are also subject to our general terms and conditions set out in our current Price Schedule.

Comments

Thank you for using Log-Tech, Inc.
 (785) 625-3858

Dighton,
 8 W to Dodge Rd, 1 1/8 N,
 W into

Database File: larson_072112hd.db
 Dataset Pathname: dil/larstack
 Presentation Format: dil2in
 Dataset Creation: Sat Jul 21 10:10:25 2012
 Charted by: Depth in Feet scaled 1:600

0 Gamma Ray 150
-200 SP 0

0 Shallow Resistivity 50
0 Deep Resistivity 50

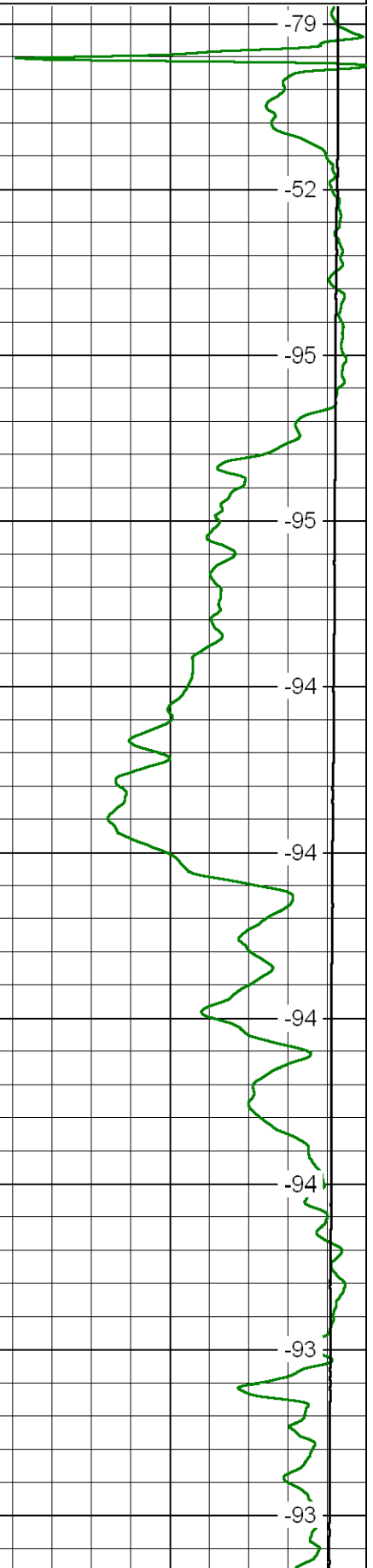
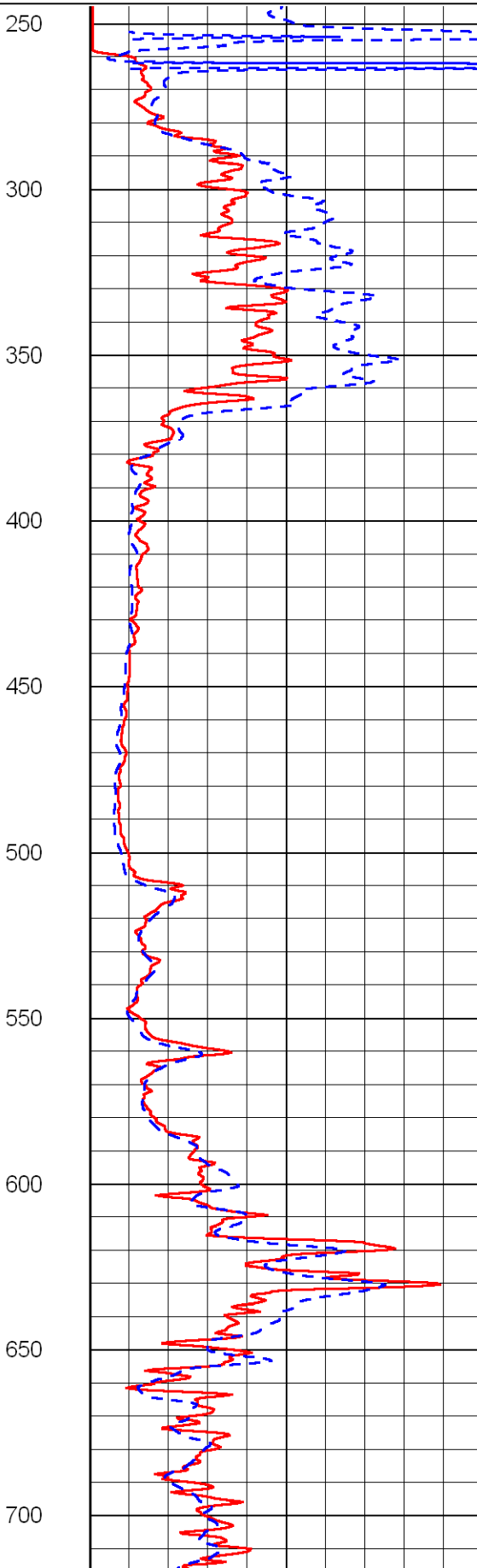
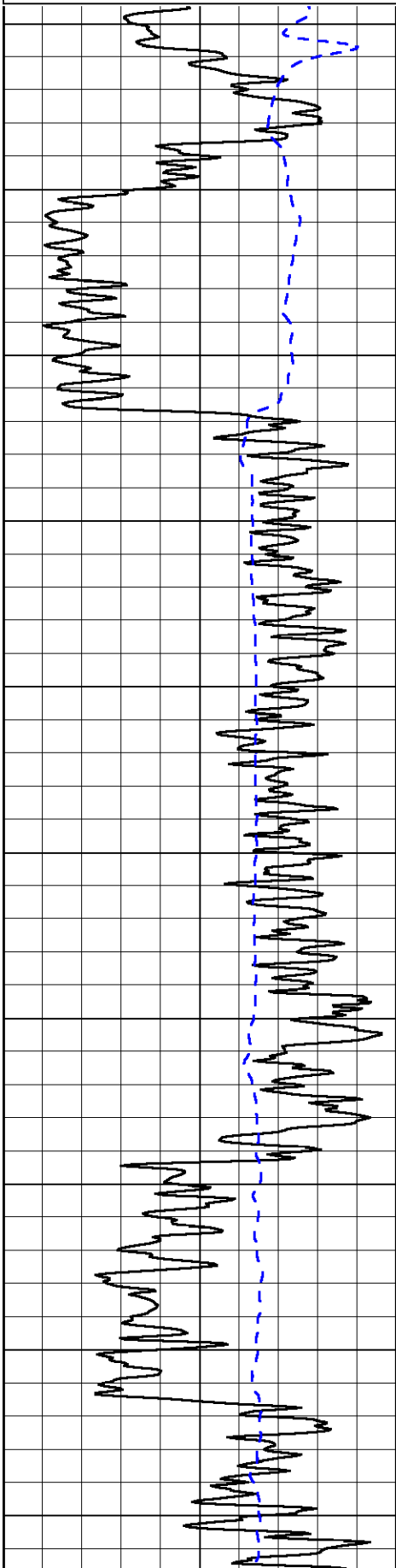
LSPD

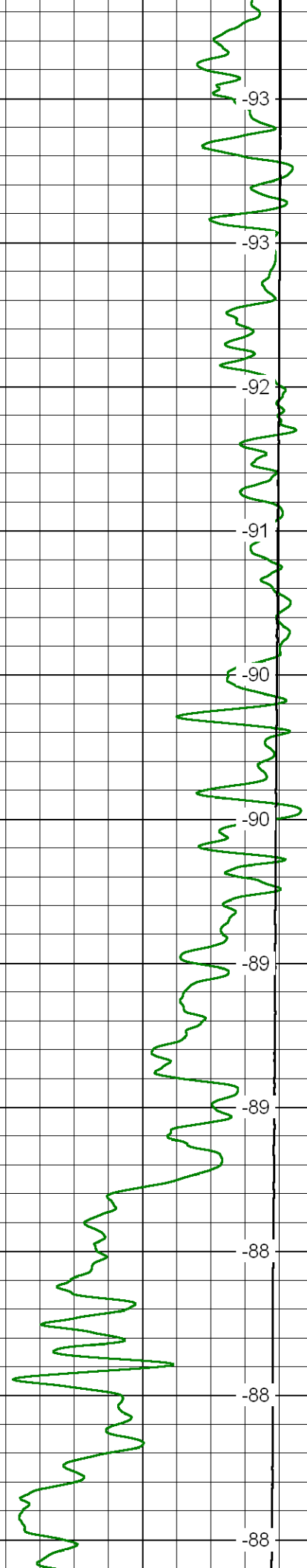
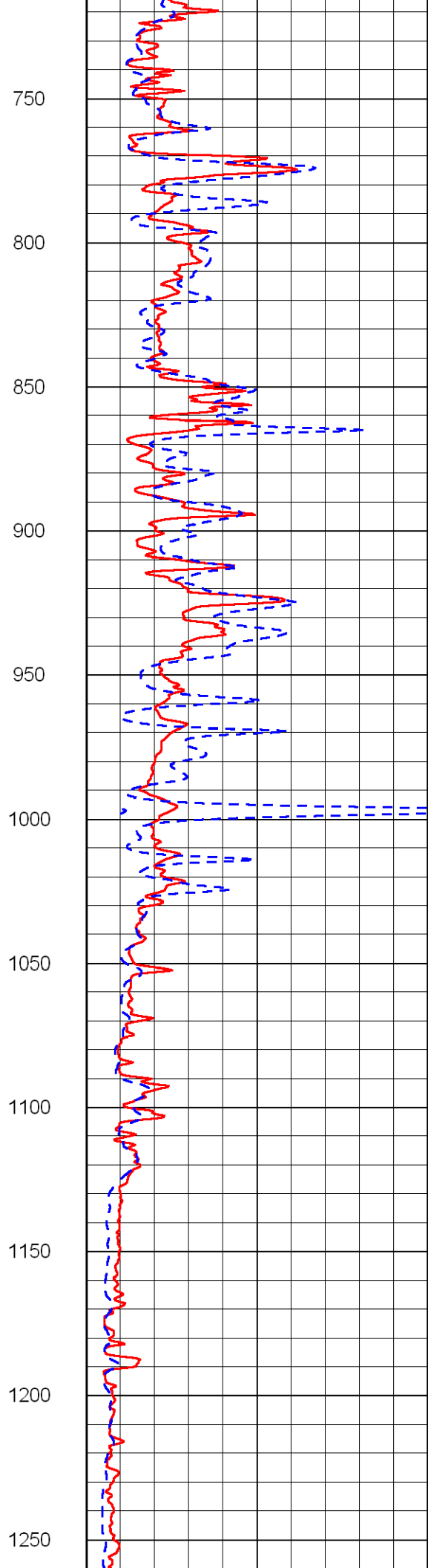
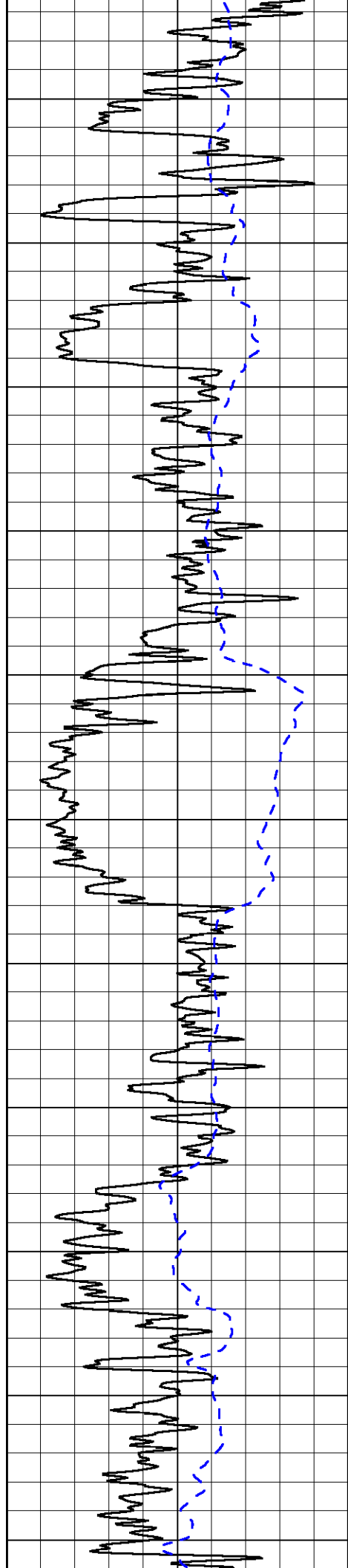
1000 Conductivity 0

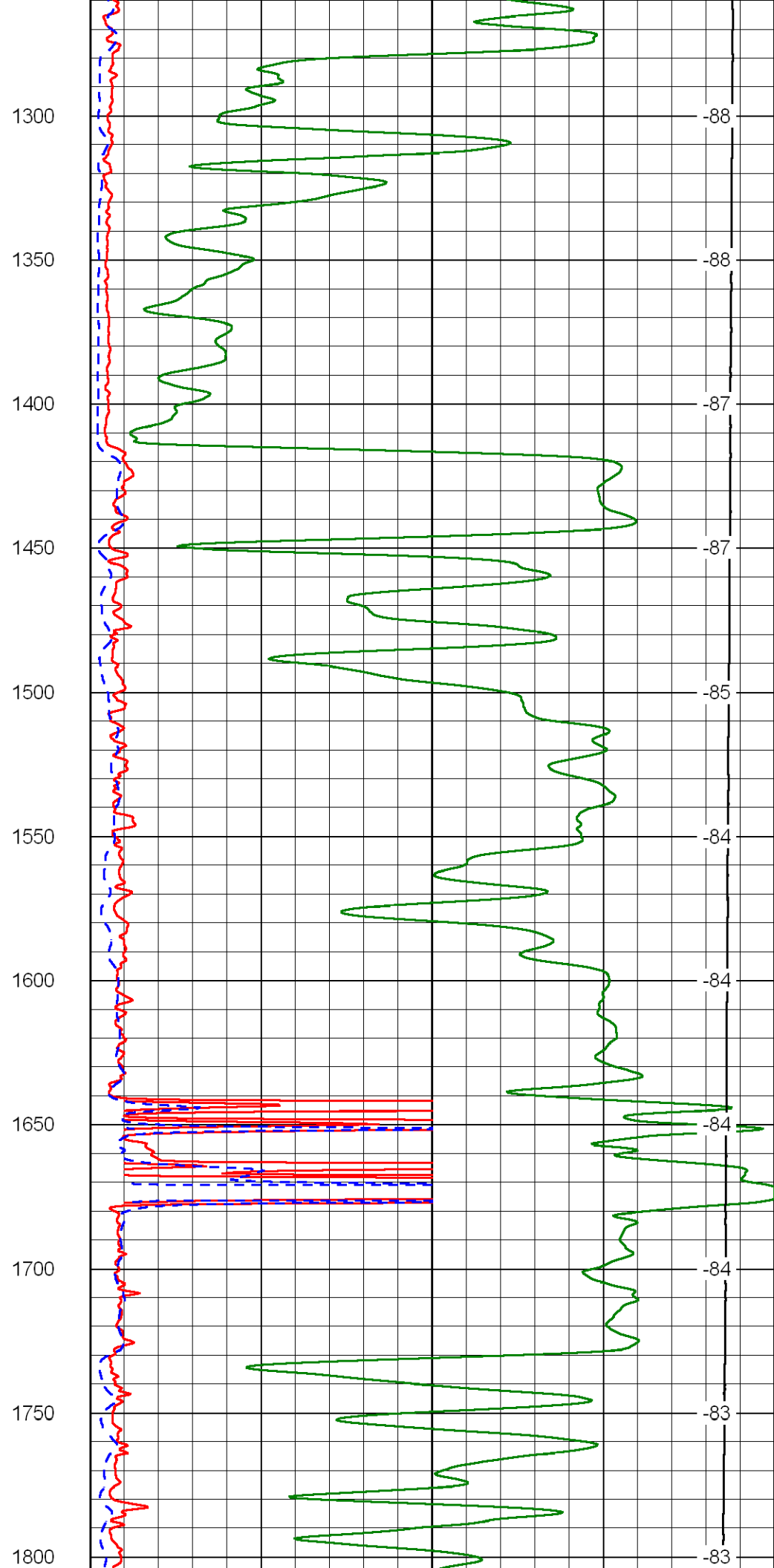
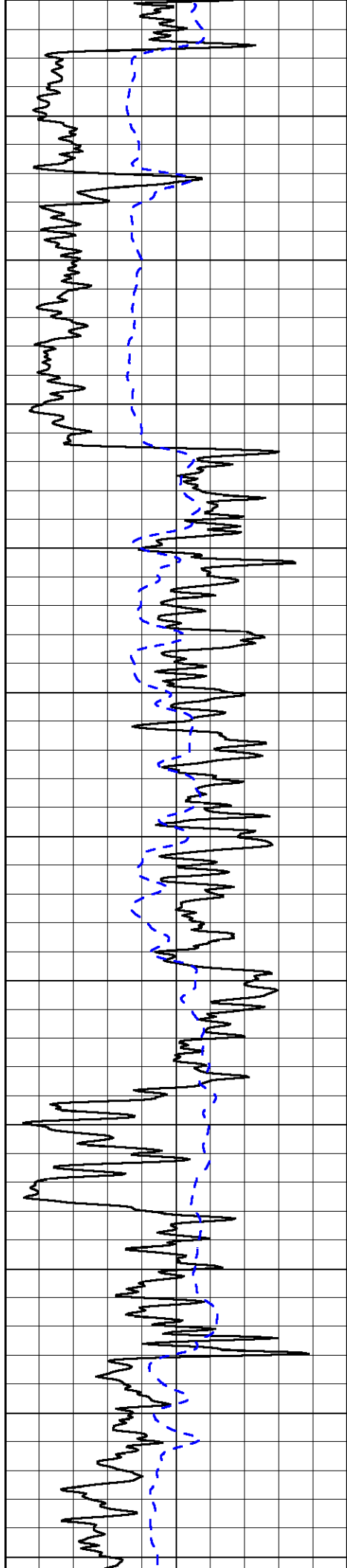
15000 Line Tension 0

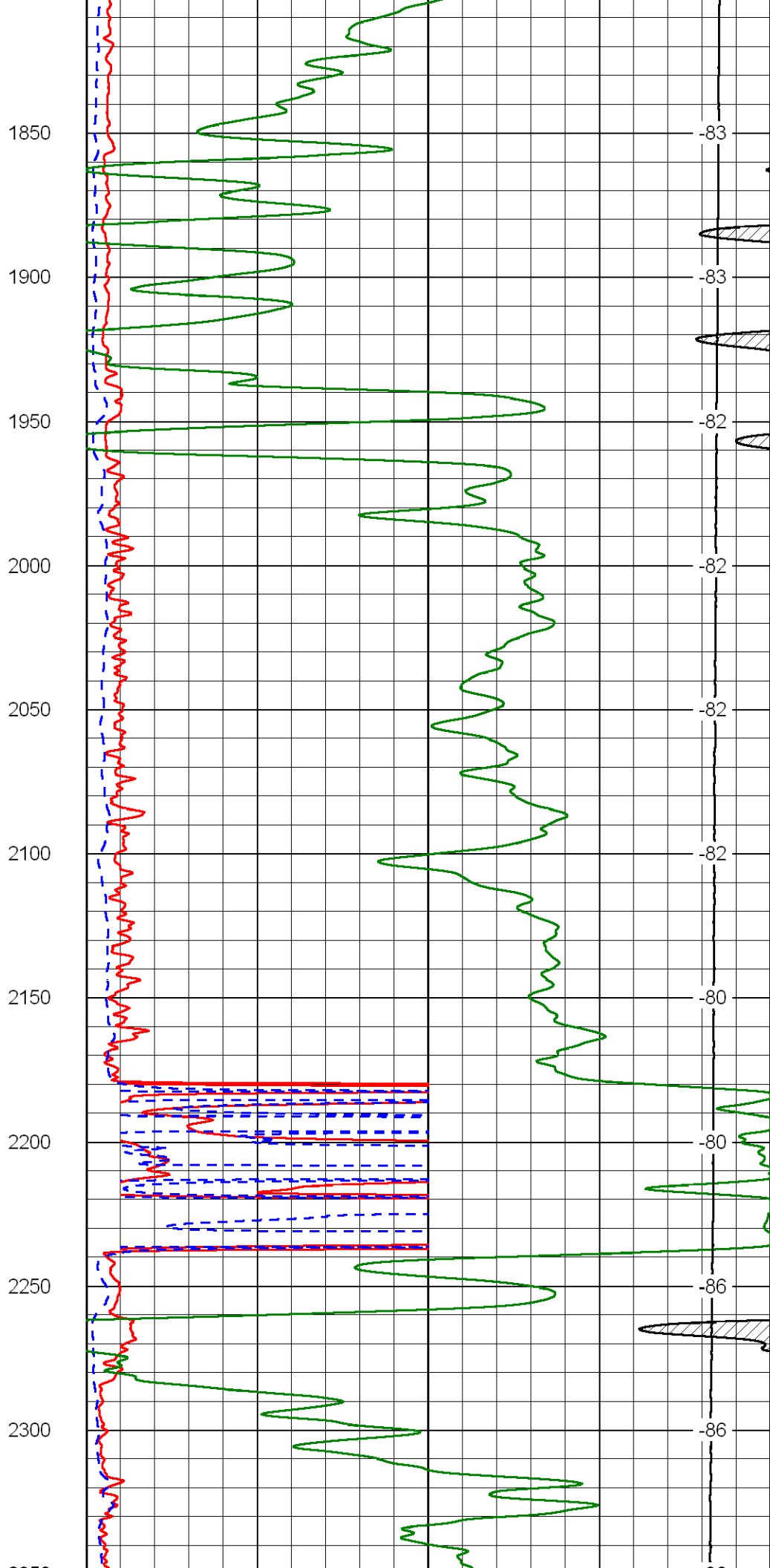
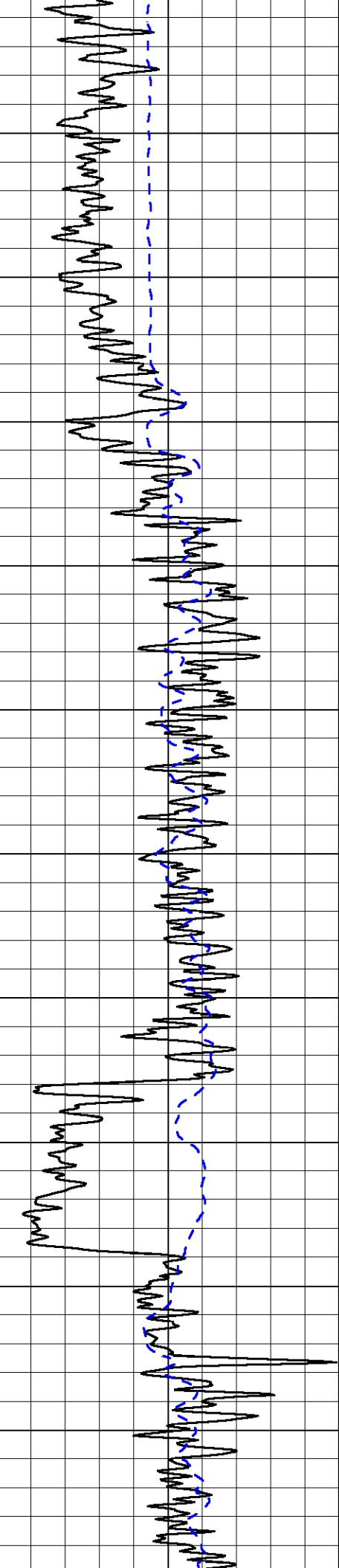
50 Shallow Resistivity 500

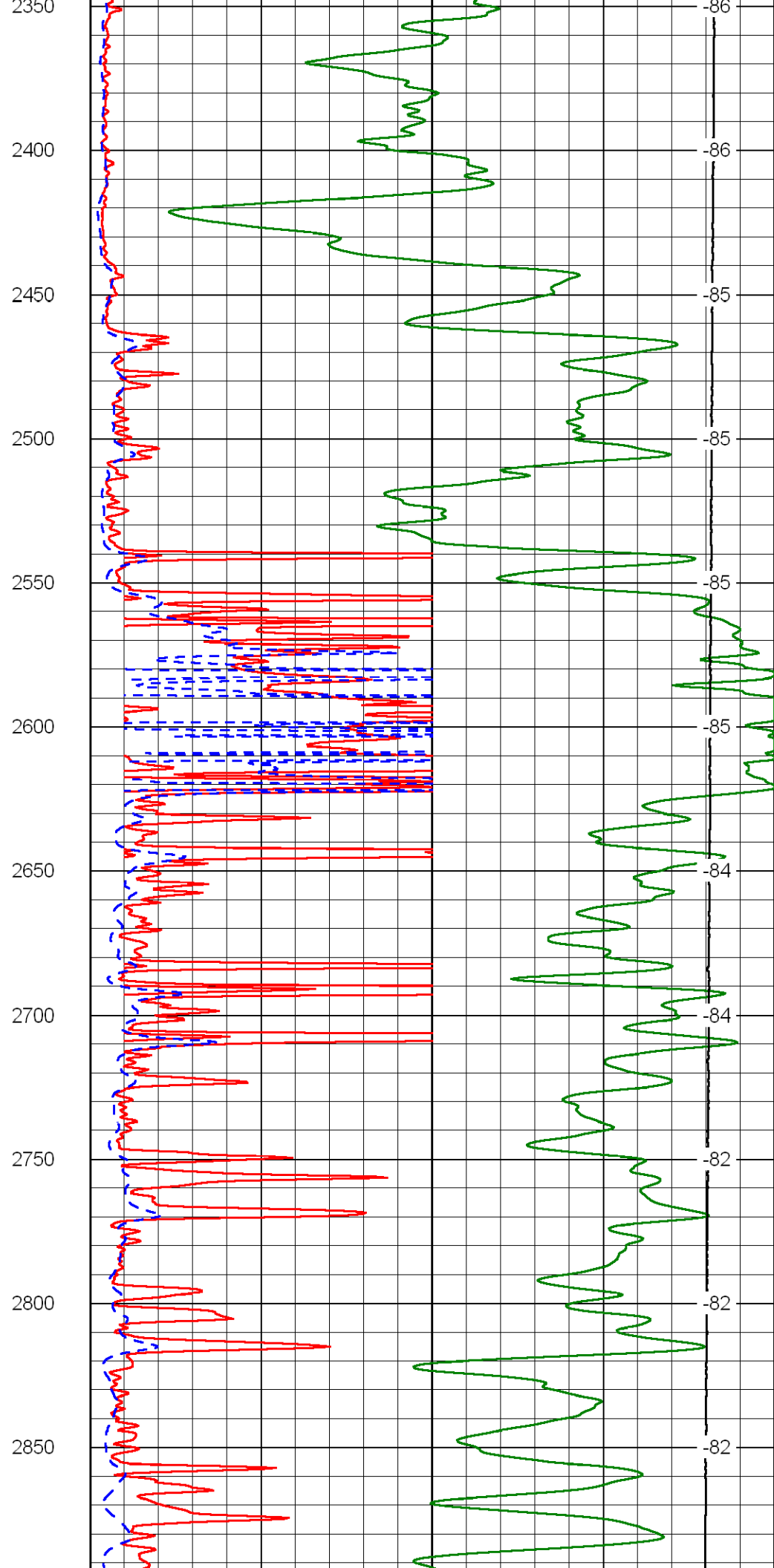
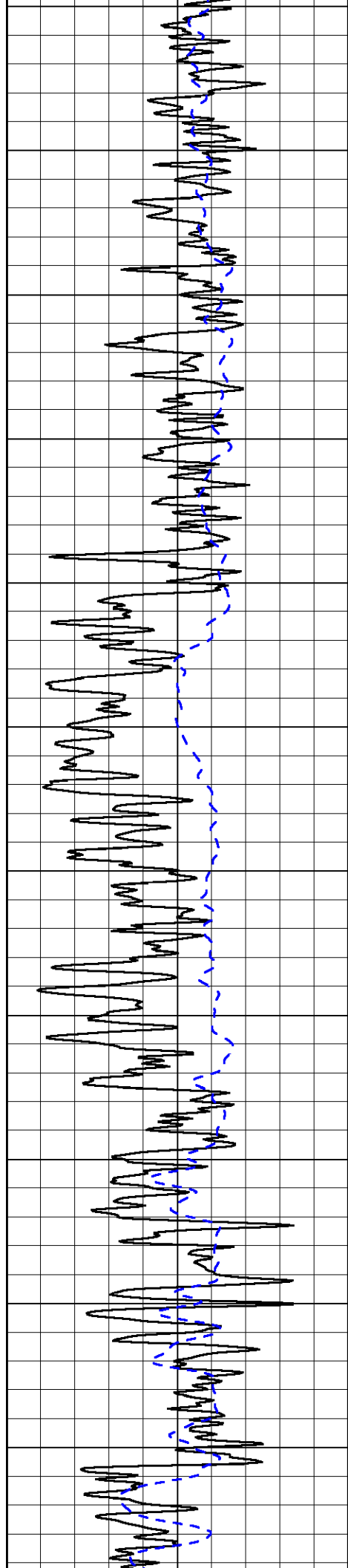
50 Deep Resistivity 500

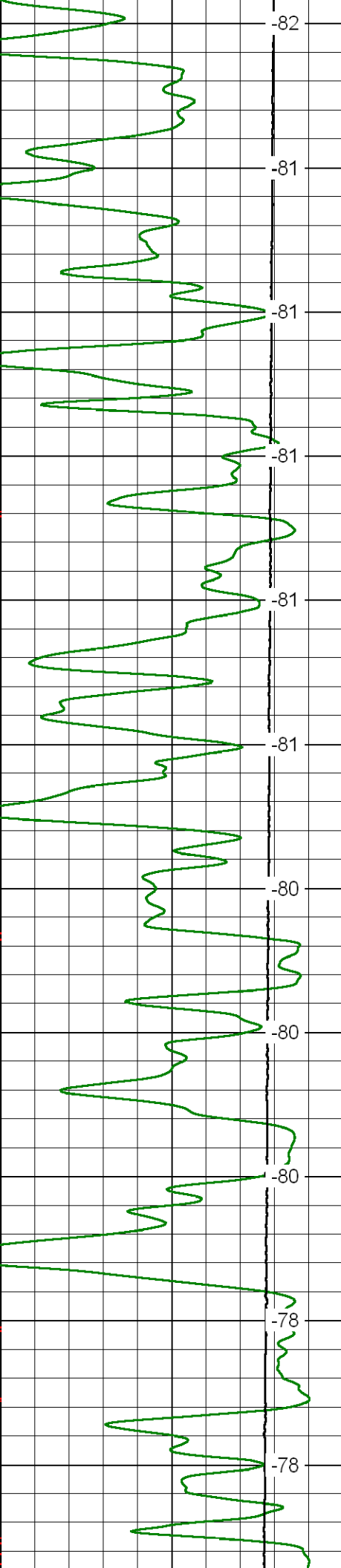
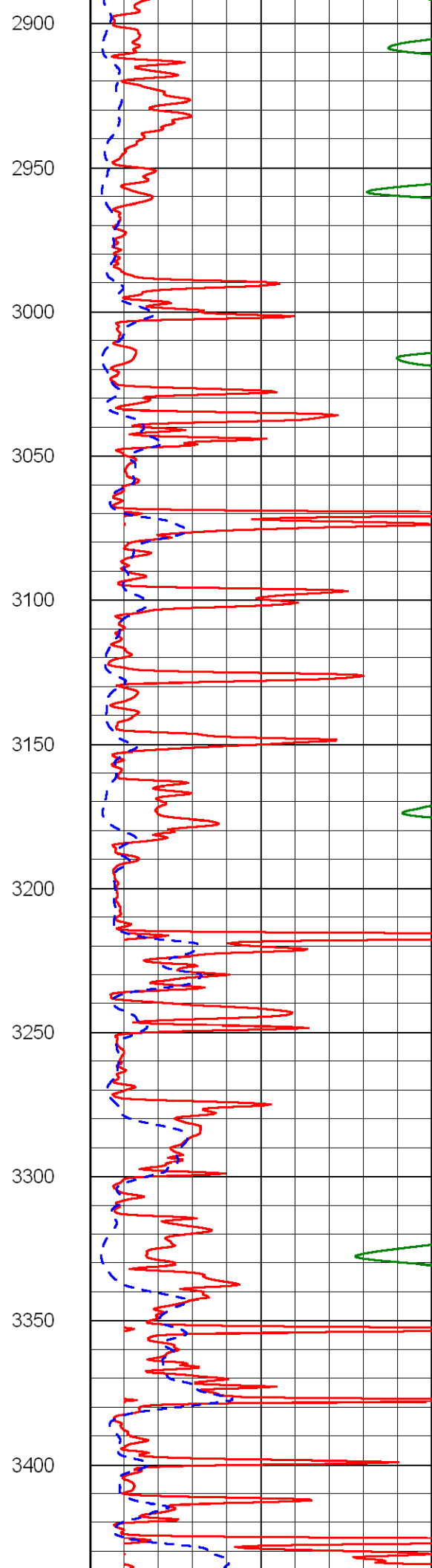
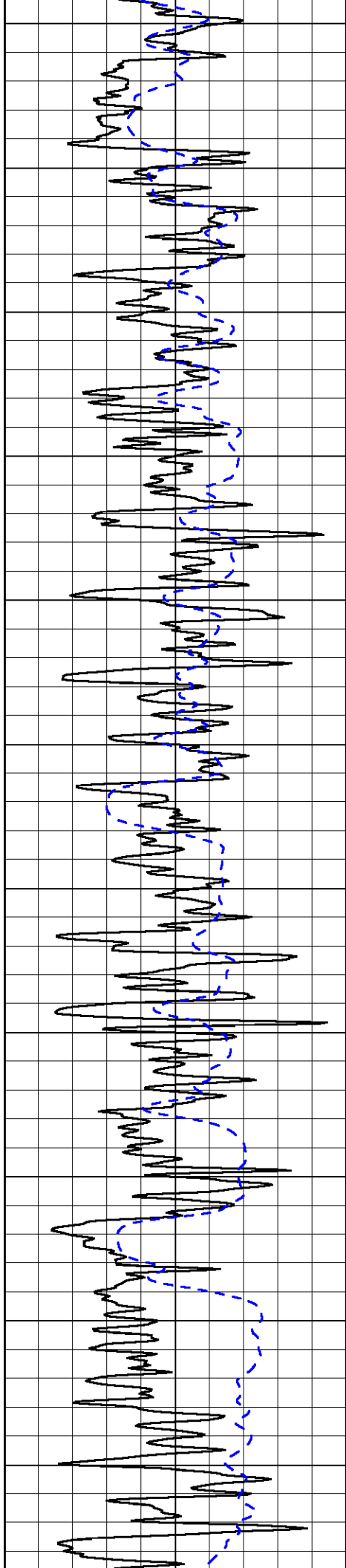


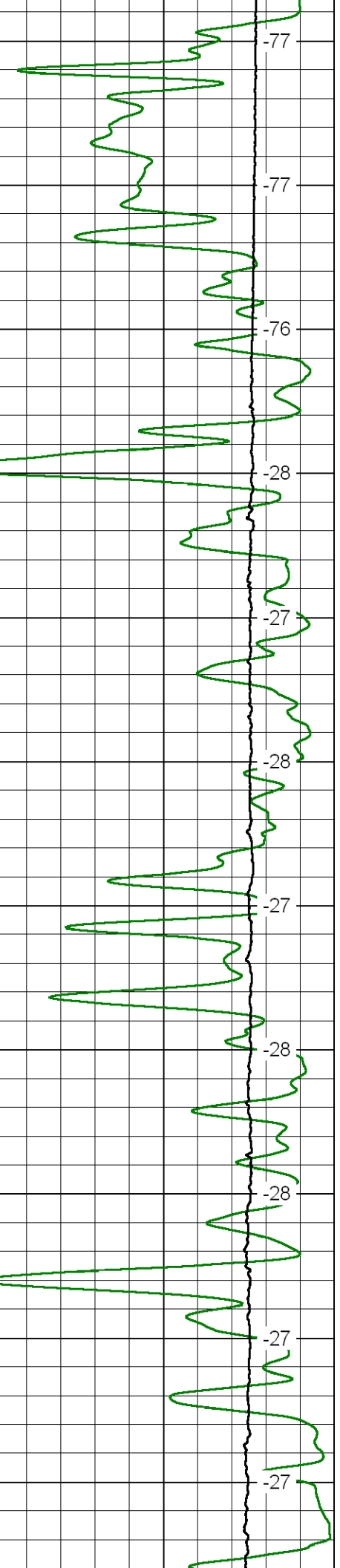
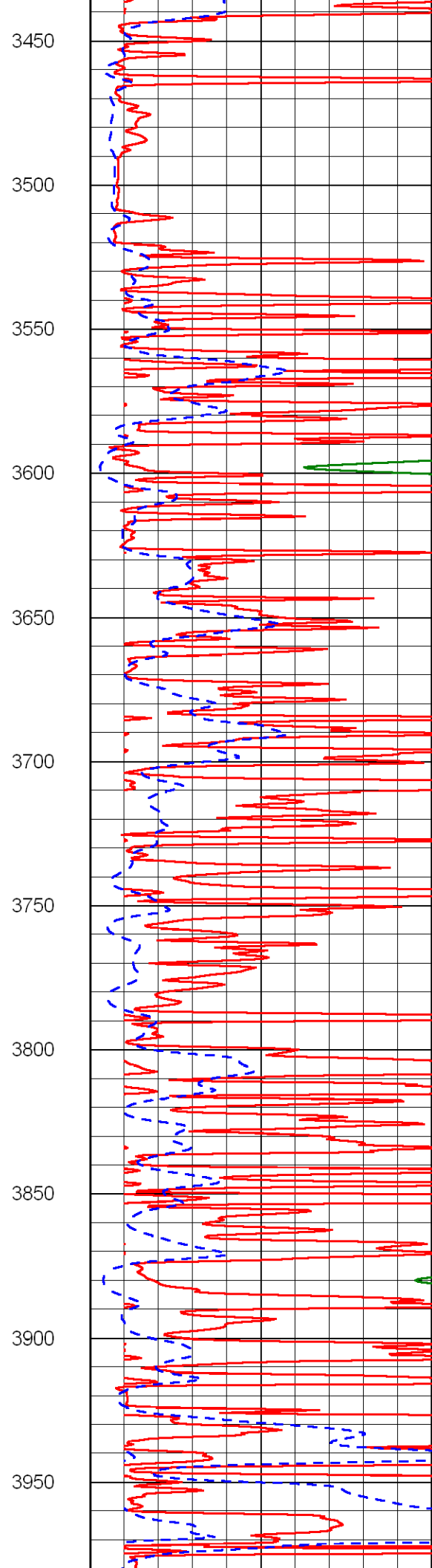
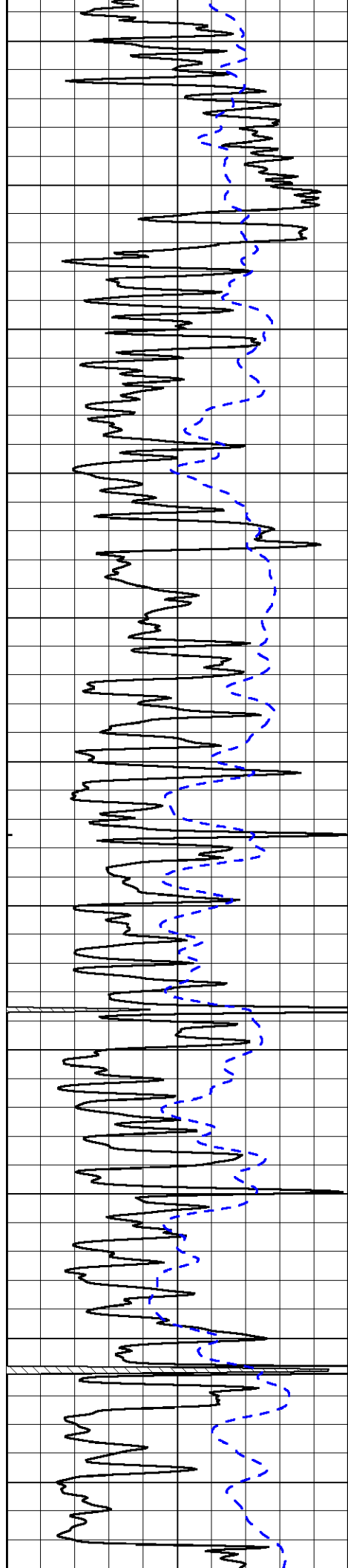


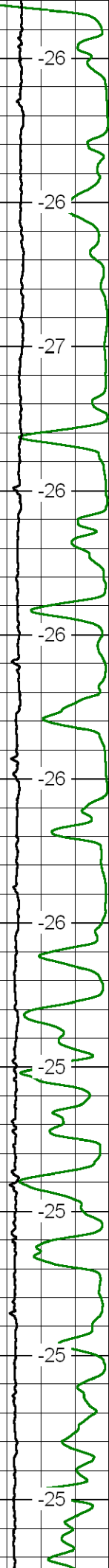
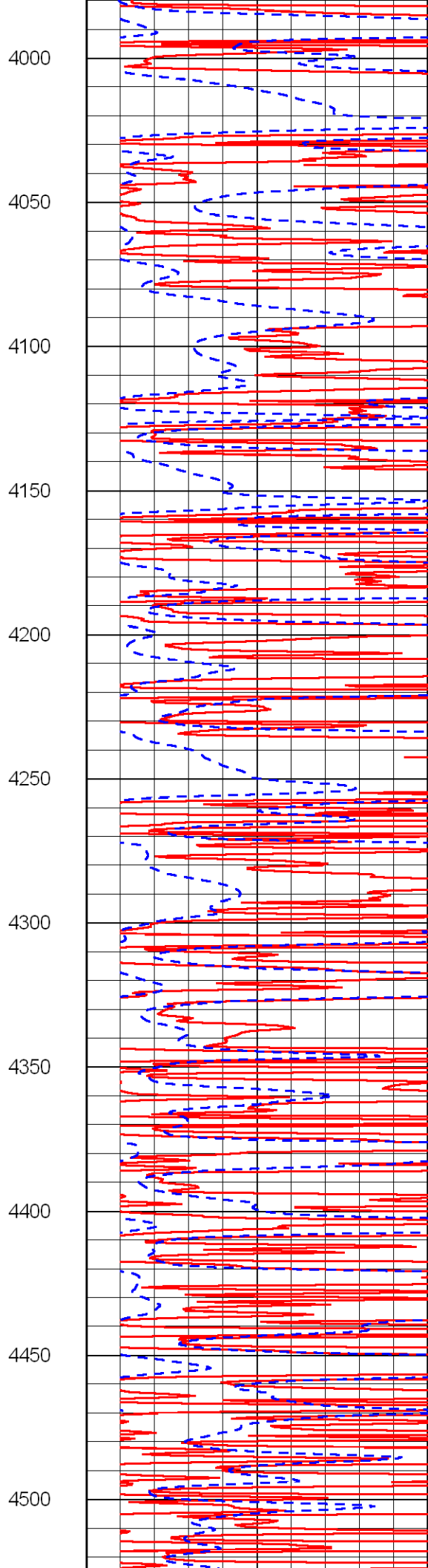
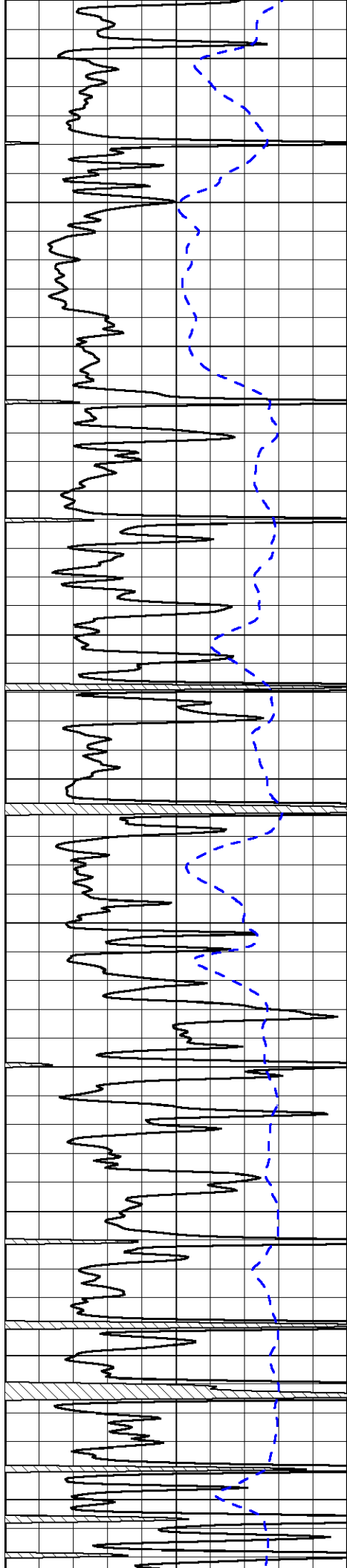


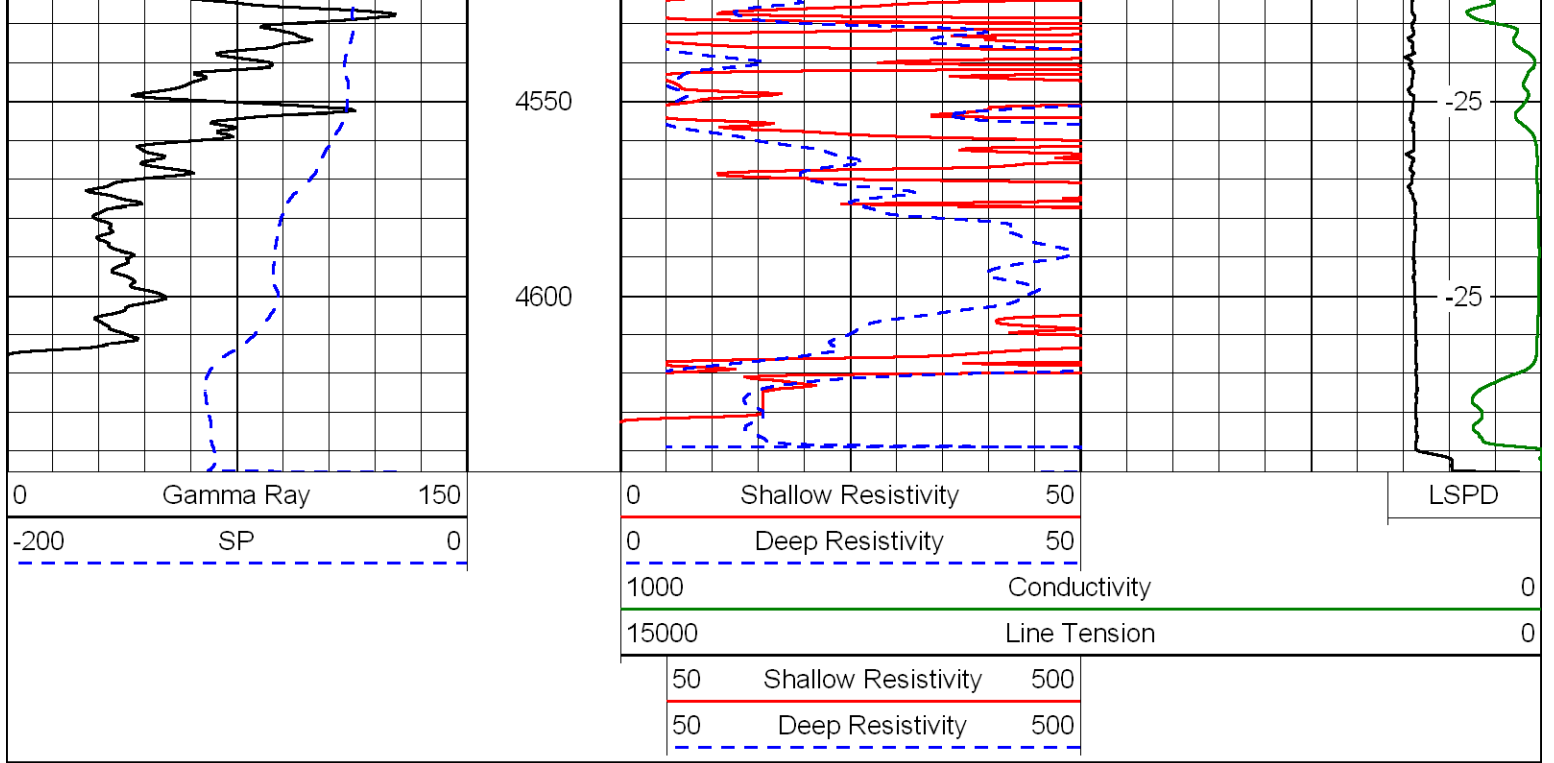




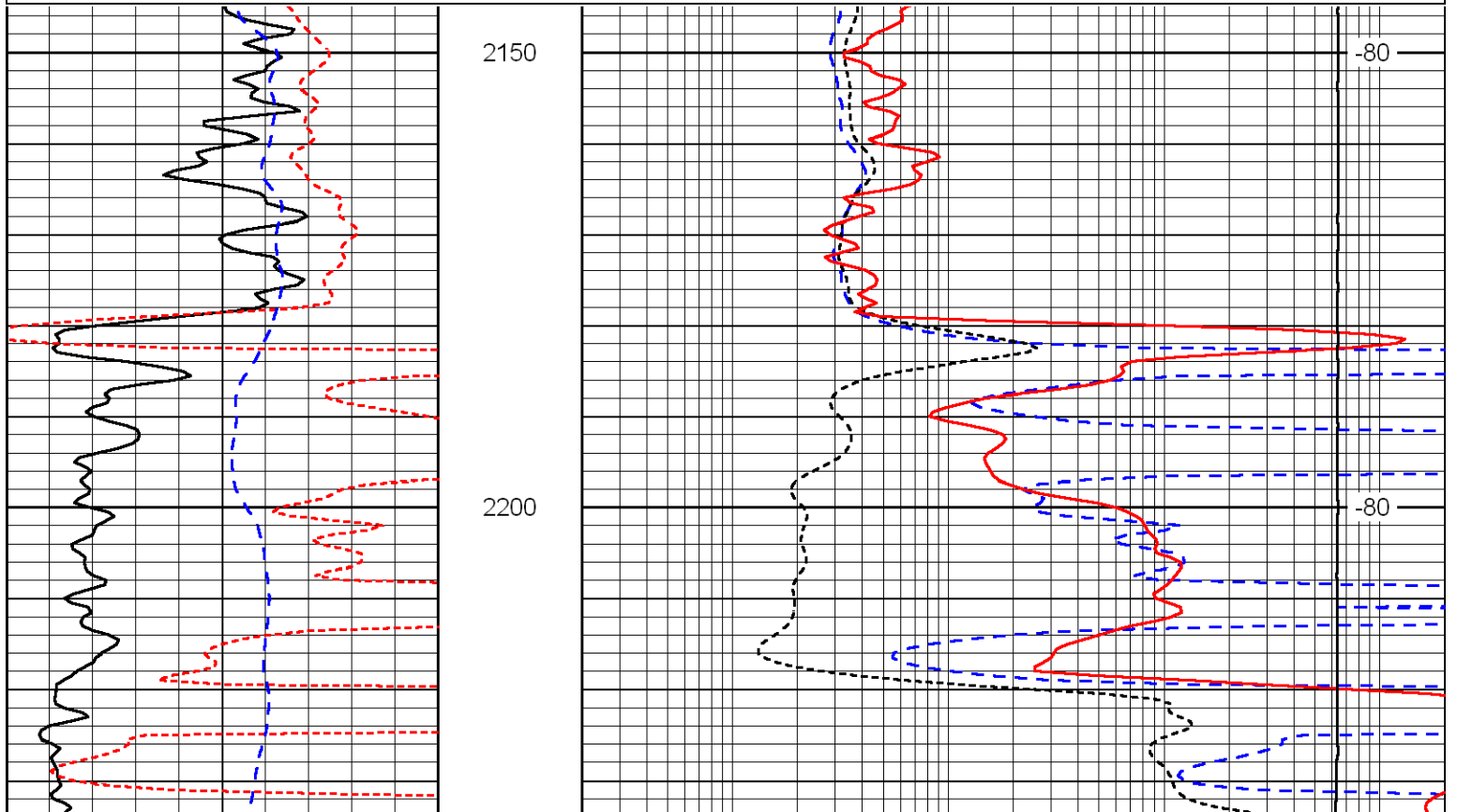
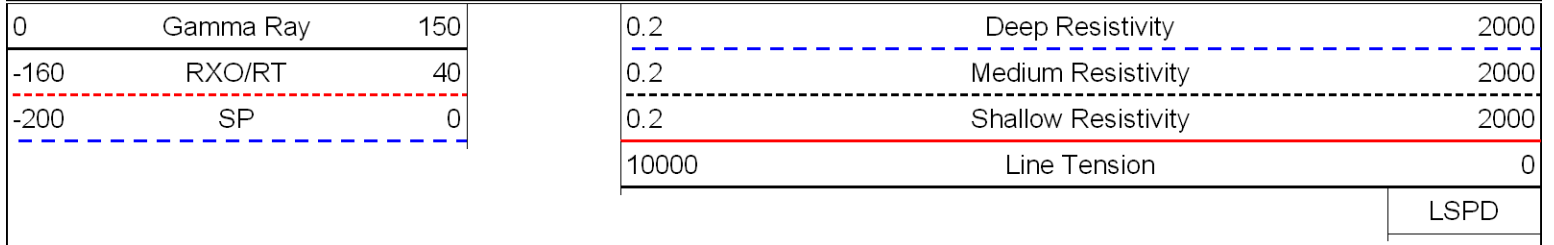


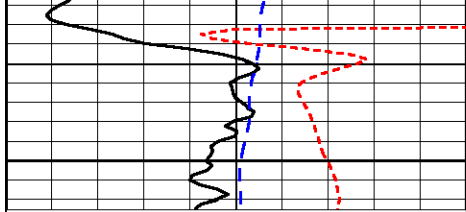






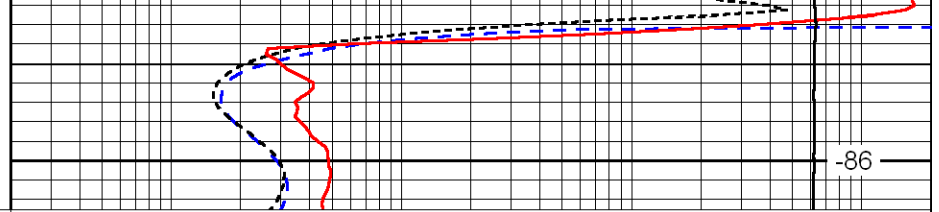
Database File: larson_072112hd.db
 Dataset Pathname: dil/larstack
 Presentation Format: dil
 Dataset Creation: Sat Jul 21 10:10:25 2012
 Charted by: Depth in Feet scaled 1:240





2250

0	Gamma Ray	150
-160	RXO/RT	40
-200	SP	0



-86

0.2	Deep Resistivity	2000
0.2	Medium Resistivity	2000
0.2	Shallow Resistivity	2000
10000	Line Tension	0

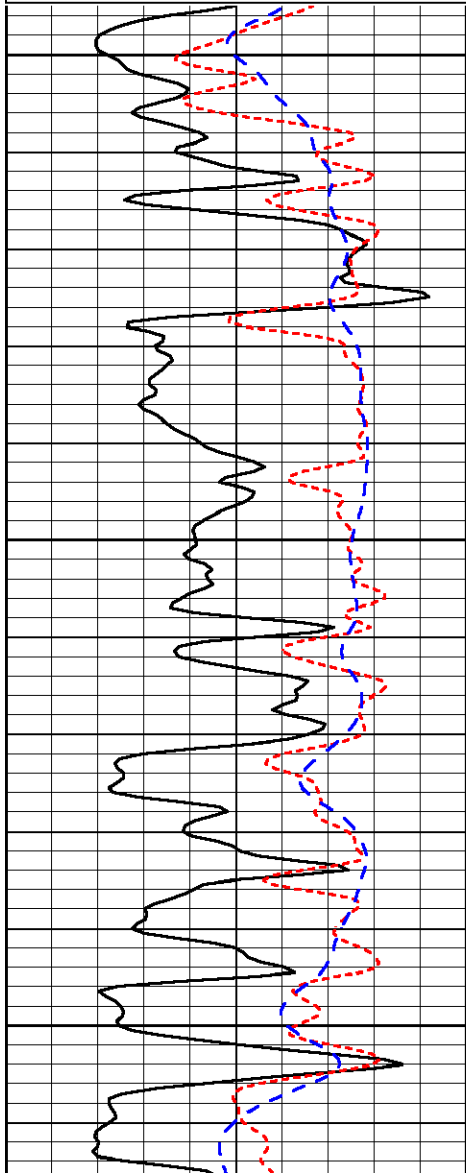
LSPD

Database File: laron_072112hd.db
 Dataset Pathname: dil/larstack
 Presentation Format: dil
 Dataset Creation: Sat Jul 21 10:10:25 2012
 Charted by: Depth in Feet scaled 1:240

0	Gamma Ray	150
-160	RXO/RT	40
-200	SP	0

0.2	Deep Resistivity	2000
0.2	Medium Resistivity	2000
0.2	Shallow Resistivity	2000
10000	Line Tension	0

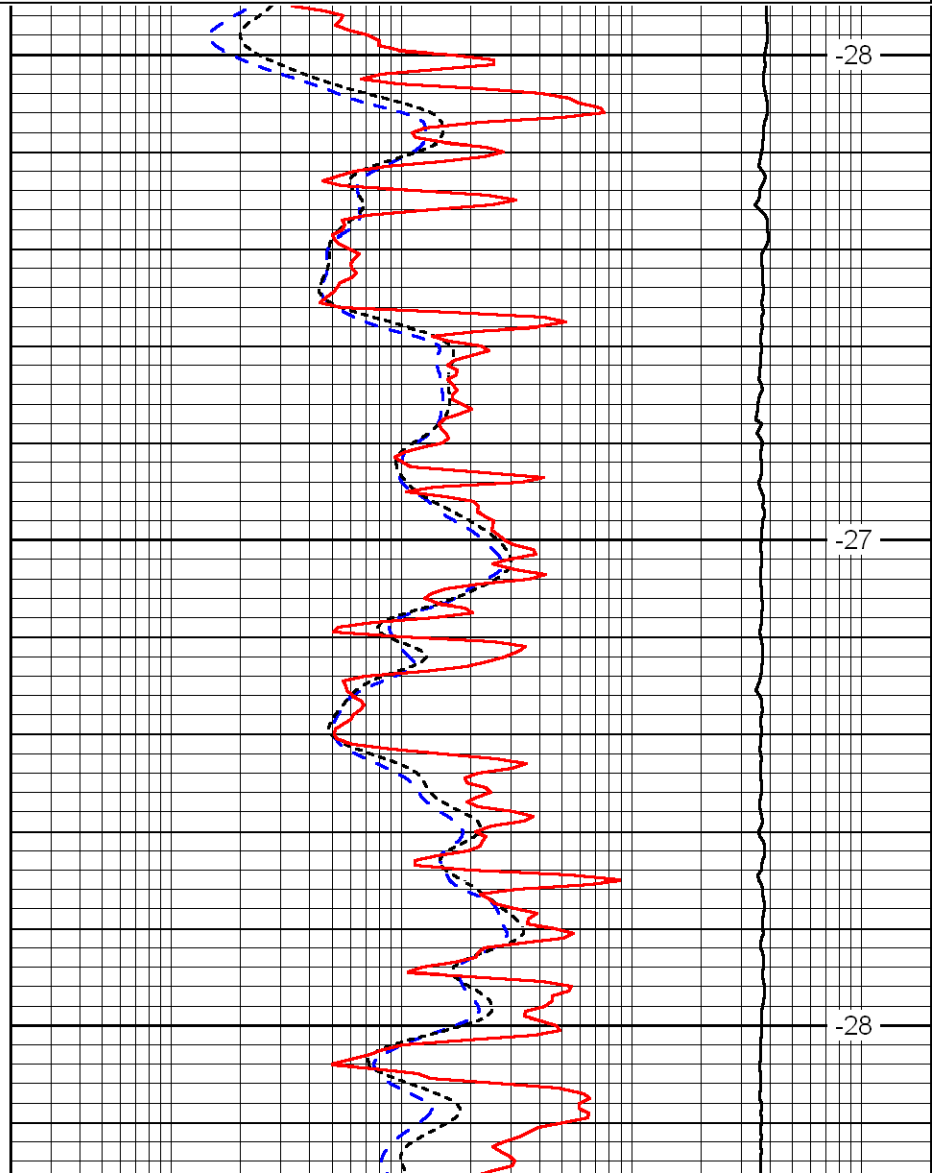
LSPD



3600

3650

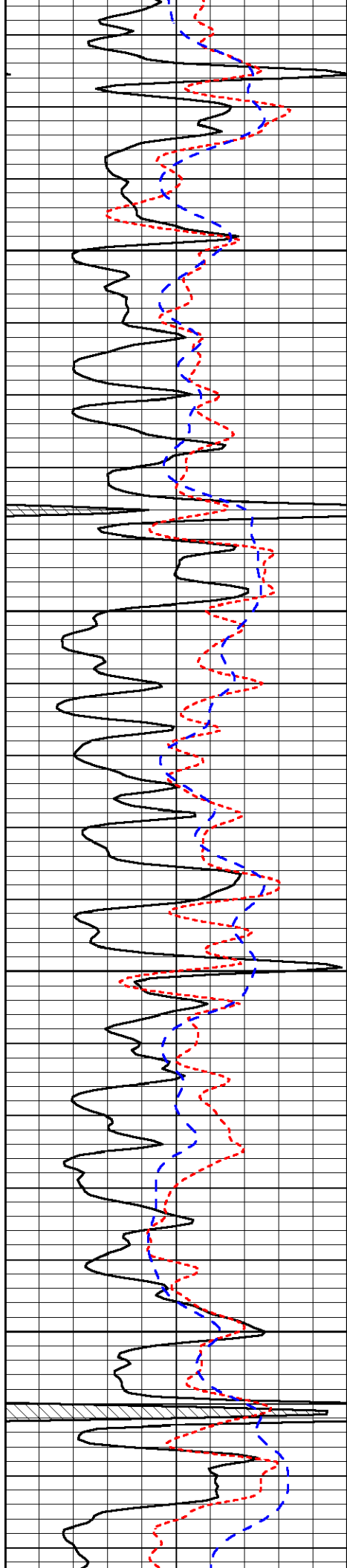
3700



-28

-27

-28

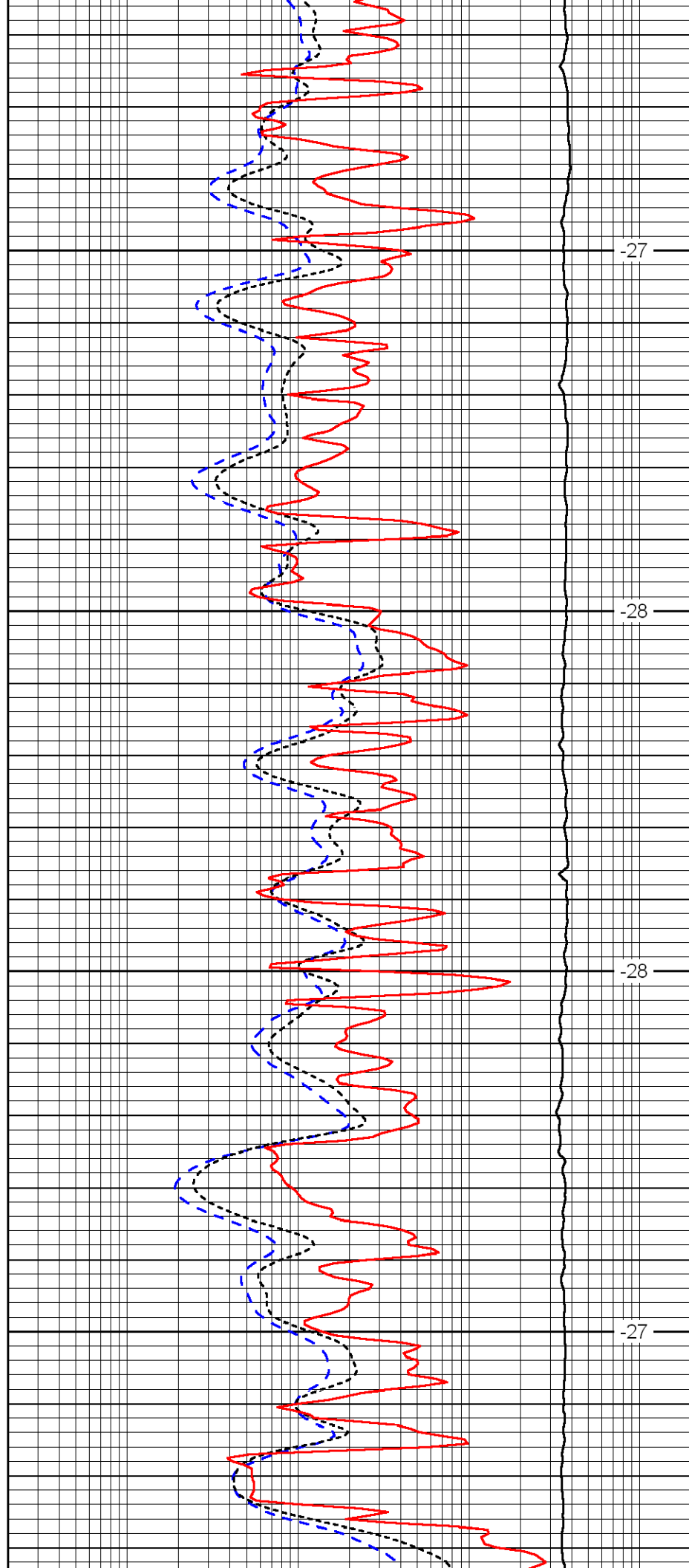


3750

3800

3850

3900

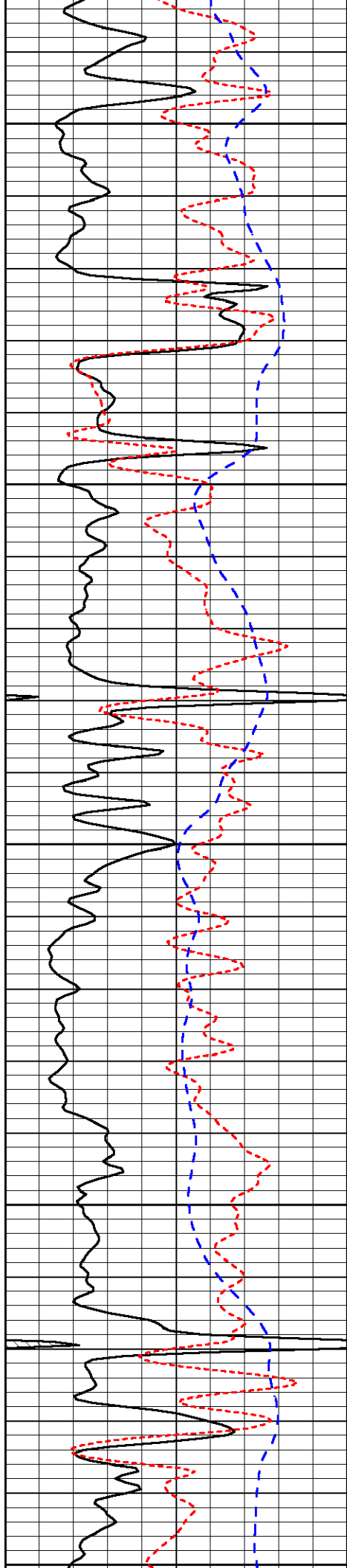


-27

-28

-28

-27



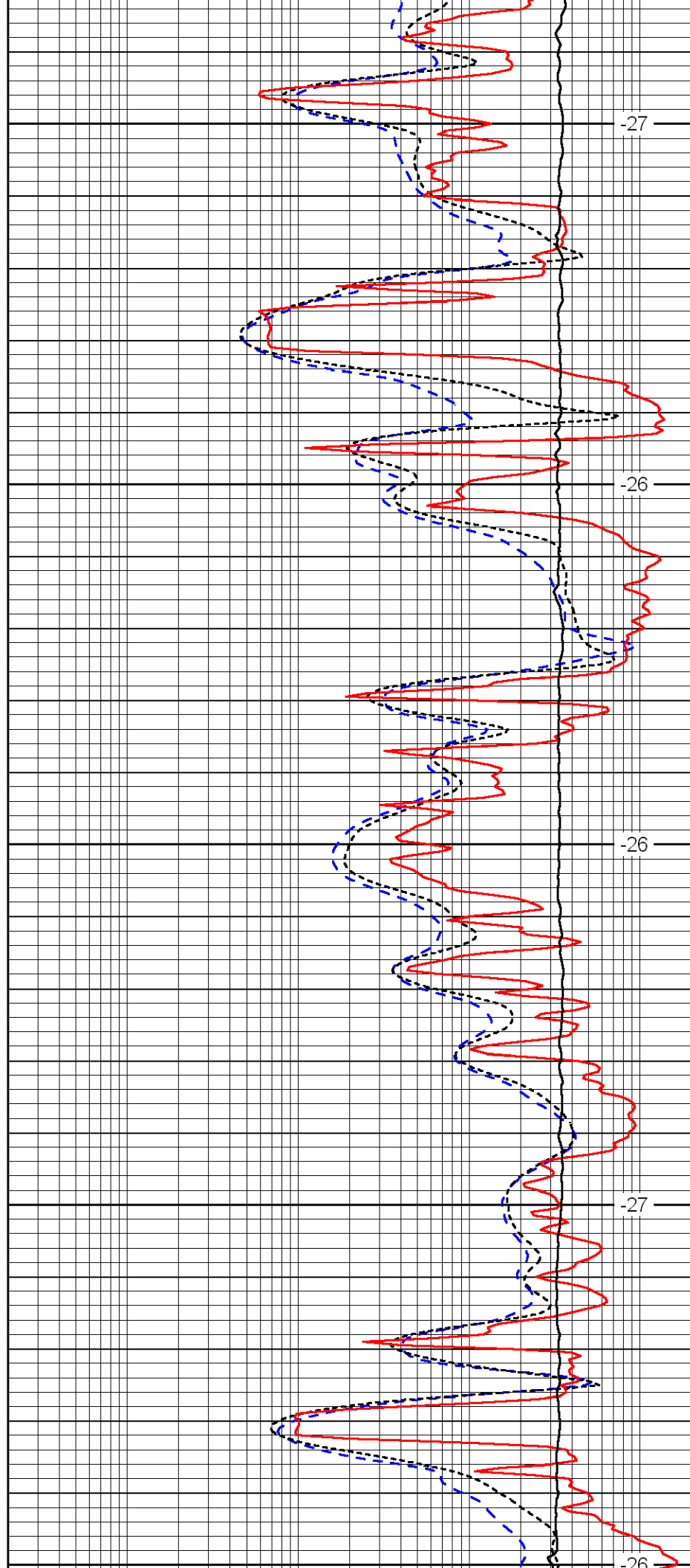
3950

4000

4050

4100

4150



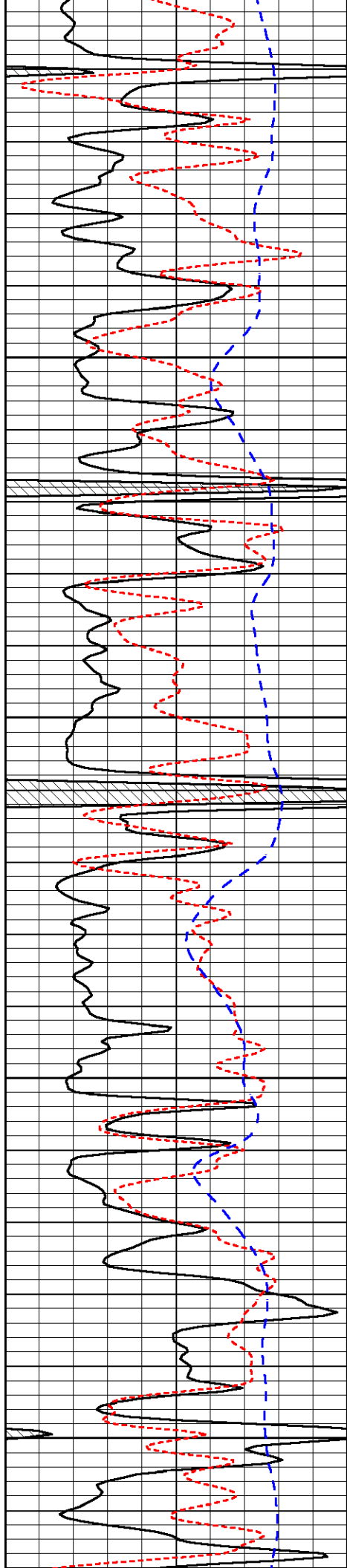
-27

-26

-26

-27

-26

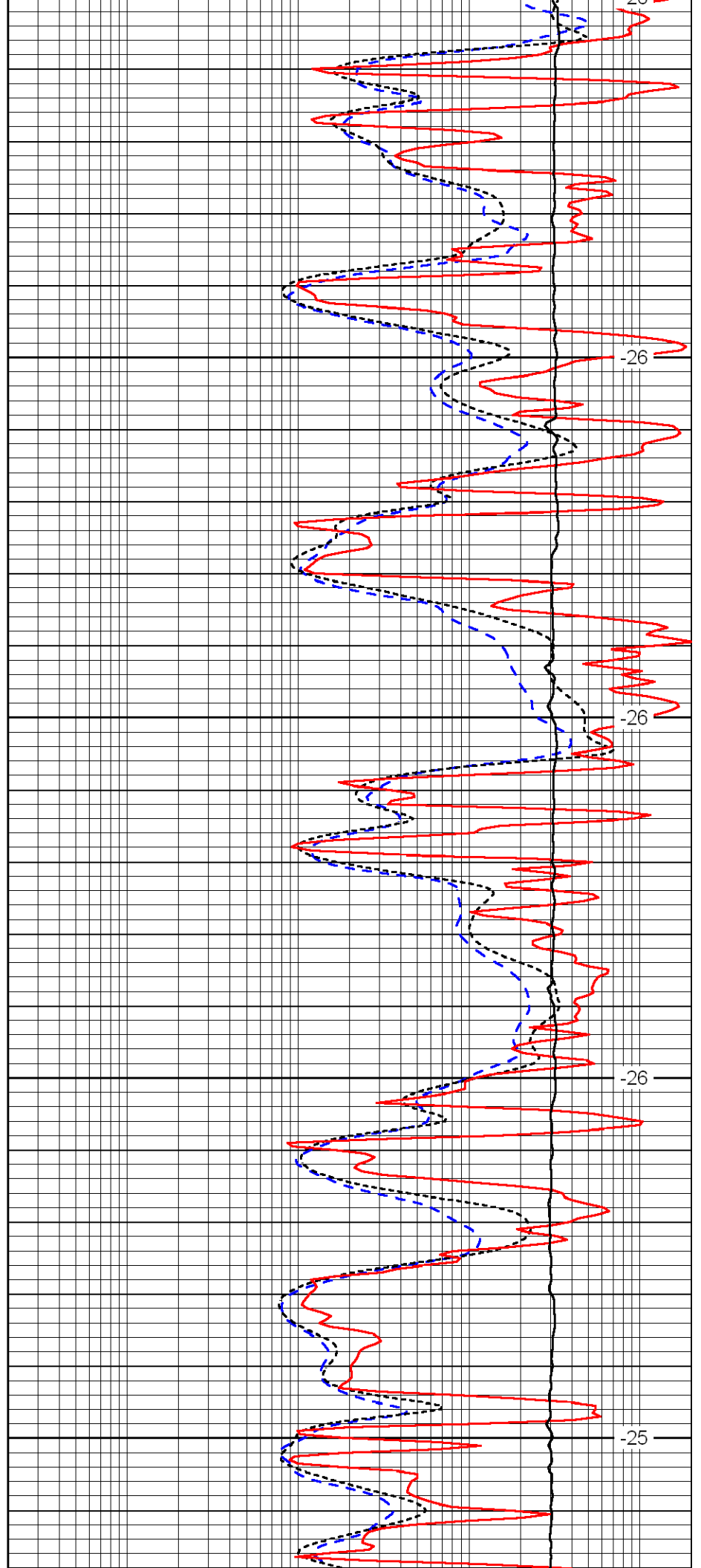


4200

4250

4300

4350

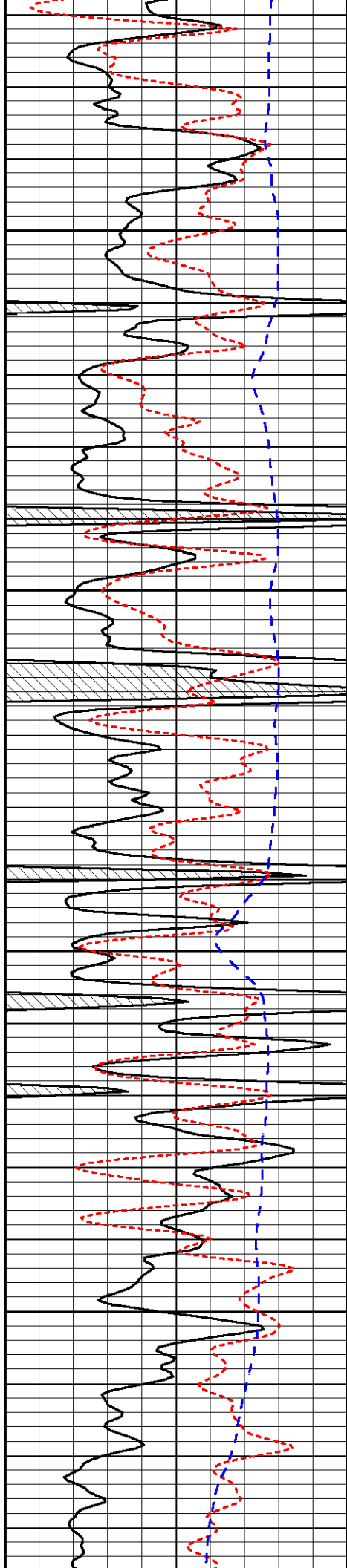


-26

-26

-26

-25

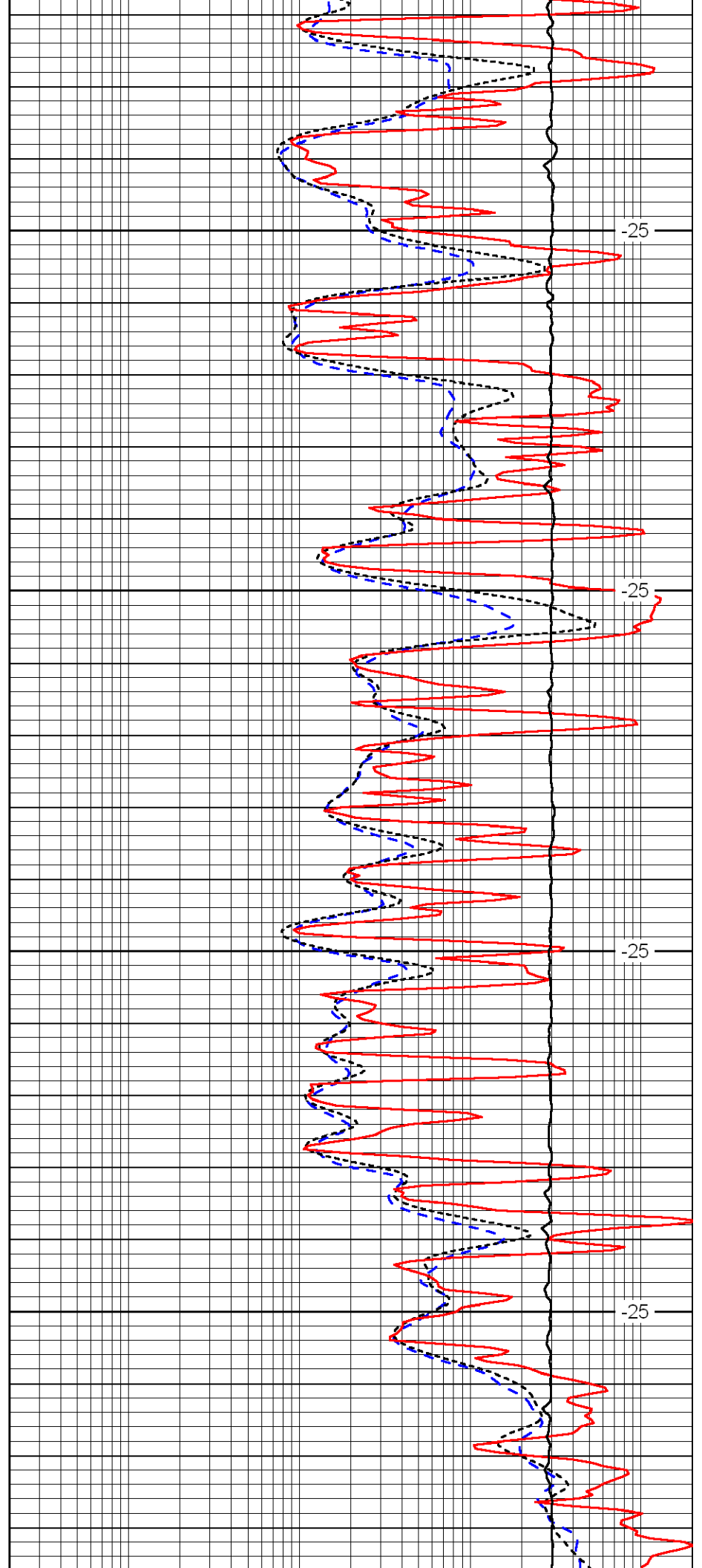


4400

4450

4500

4550

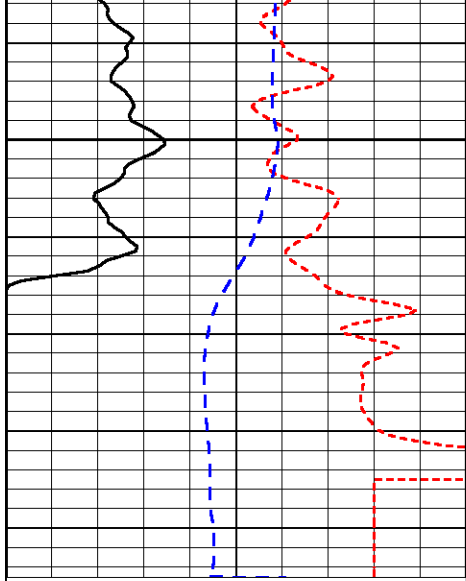


-25

-25

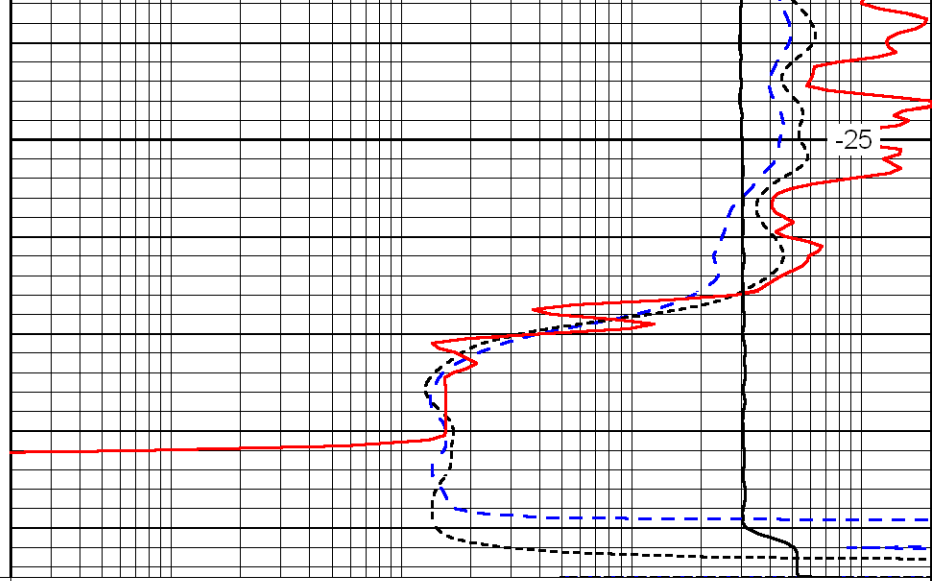
-25

-25



4600

0	Gamma Ray	150
-160	RXO/RT	40
-200	SP	0



-25

0.2	Deep Resistivity	2000
0.2	Medium Resistivity	2000
0.2	Shallow Resistivity	2000
10000	Line Tension	0

LSPD