



**COMPLETION
& PRODUCTION
SERVICES CO.**

**COMPENSATED
DENSITY / NEUTRON
PE LOG**

Company WOOLSEY OPERATING CO., LLC.
Well WARREN FEE #12
Field MEDICINE LODGE NORTH
County BARBER
State KANSAS

Company WOOLSEY OPERATING COMPANY, LLC.
Well WARREN FEE #12
Field MEDICINE LODGE NORTH
County BARBER State KANSAS

Location: API # : 15-007-24191-0000
2465' FSL & 1145' FWL
NE - NE - NW - SW
SEC 19 TWP 32S RGE 12W
Permanent Datum GROUND LEVEL Elevation 1646
Log Measured From KELLY BUSHING 12' A.G.L.
Drilling Measured From KELLY BUSHING
Other Services
DIL
Elevation
K.B. 1658
D.F. 1656
G.L. 1646

Date	7/15/14		
Run Number	ONE		
Depth Driller	4925		
Depth Logger	4923		
Bottom Logged Interval	4899		
Top Log Interval	1600		
Casing Driller	13 3/8" @ 225'		
Casing Logger	224		
Bit Size	7 7/8"		
Type Fluid in Hole	CHEMICAL MUD	CHLORIDES 6,000 PPM	
Density / Viscosity	9.1/51		
pH / Fluid Loss	10.0/9.6		
Source of Sample	FLOWLINE		
Rim @ Meas. Temp	.600 @ 90F		
Rmf @ Meas. Temp	.450 @ 90F		
Rmc @ Meas. Temp	.720 @ 90F		
Source of Rmf / Rmc	MEASUREMENT		
Rim @ BHT	.435 @ 124F		
Time Circulation Stopped	3 HOURS		
Time Logger on Bottom	6:30 P.M.		
Maximum Recorded Temperature	124F		
Equipment Number	4854		
Location	HAYS, KANSAS		
Recorded By	JEFF LUEBBERS		
Witnessed By	BILL KLAVER		

<<< Fold Here >>>

All interpretations are opinions based on inferences from electrical or other measurements and we cannot and do not guarantee the accuracy or correctness of any interpretation, and we shall not, except in the case of gross or willful negligence on our part, be liable or responsible for any loss, costs, damages, or expenses incurred or sustained by anyone resulting from any interpretation made by any of our officers, agents or employees. These interpretations are also subject to our general terms and conditions set out in our current Price Schedule.

Comments

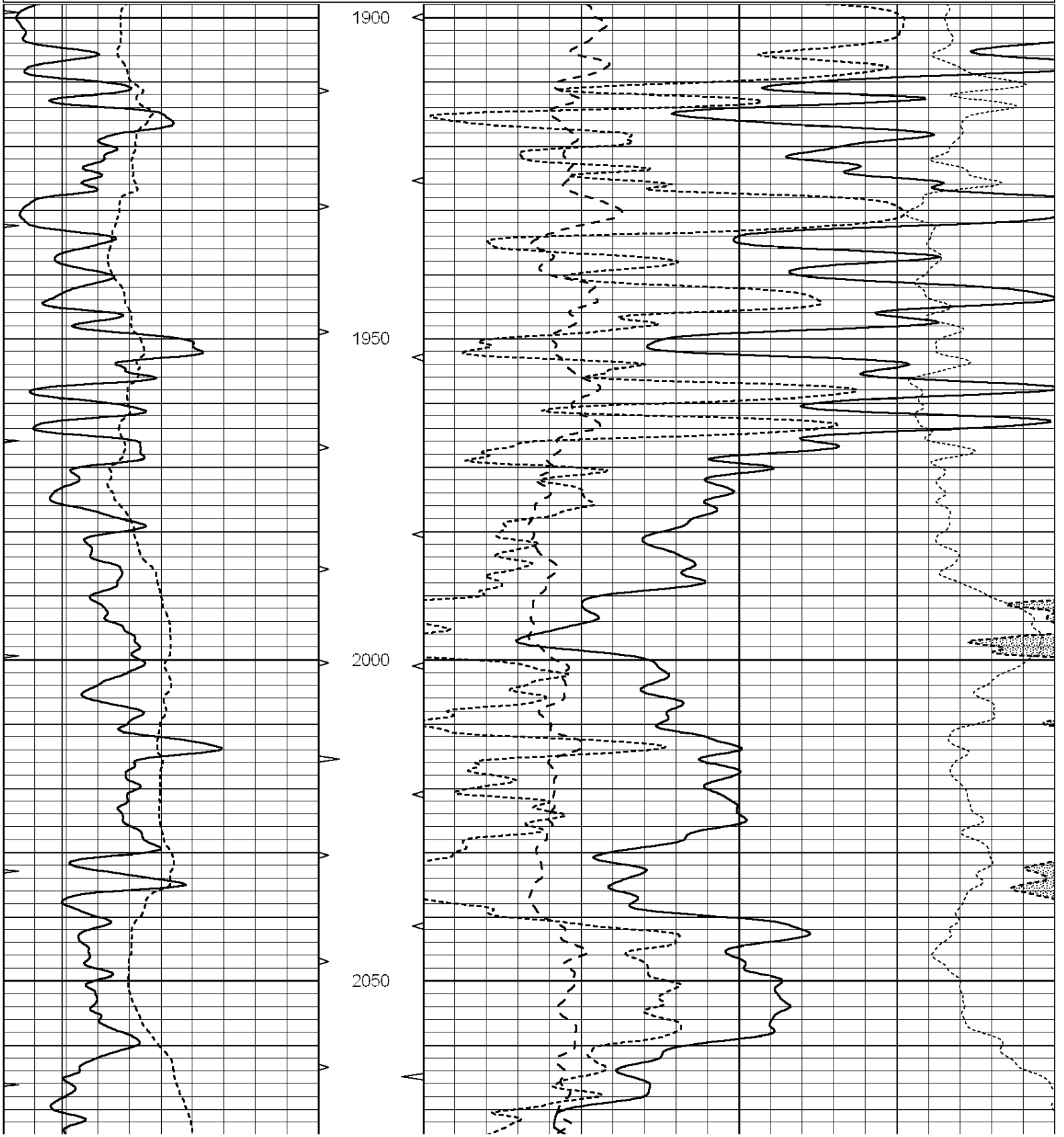
THANK YOU FOR USING "NABORS" HAYS, KANSAS (785) 628-6395
DIRECTIONS
MEDICINE LODGE, KS.,3W. ON HWY 160 TO "GYP HILL RD.", 4S. TO CATTLE GUARD WITH (OLD RUSTY SKELLY SIGN) W. INTO AND 2 MILES N.W. ON WHITE CHALK LEASE RD.

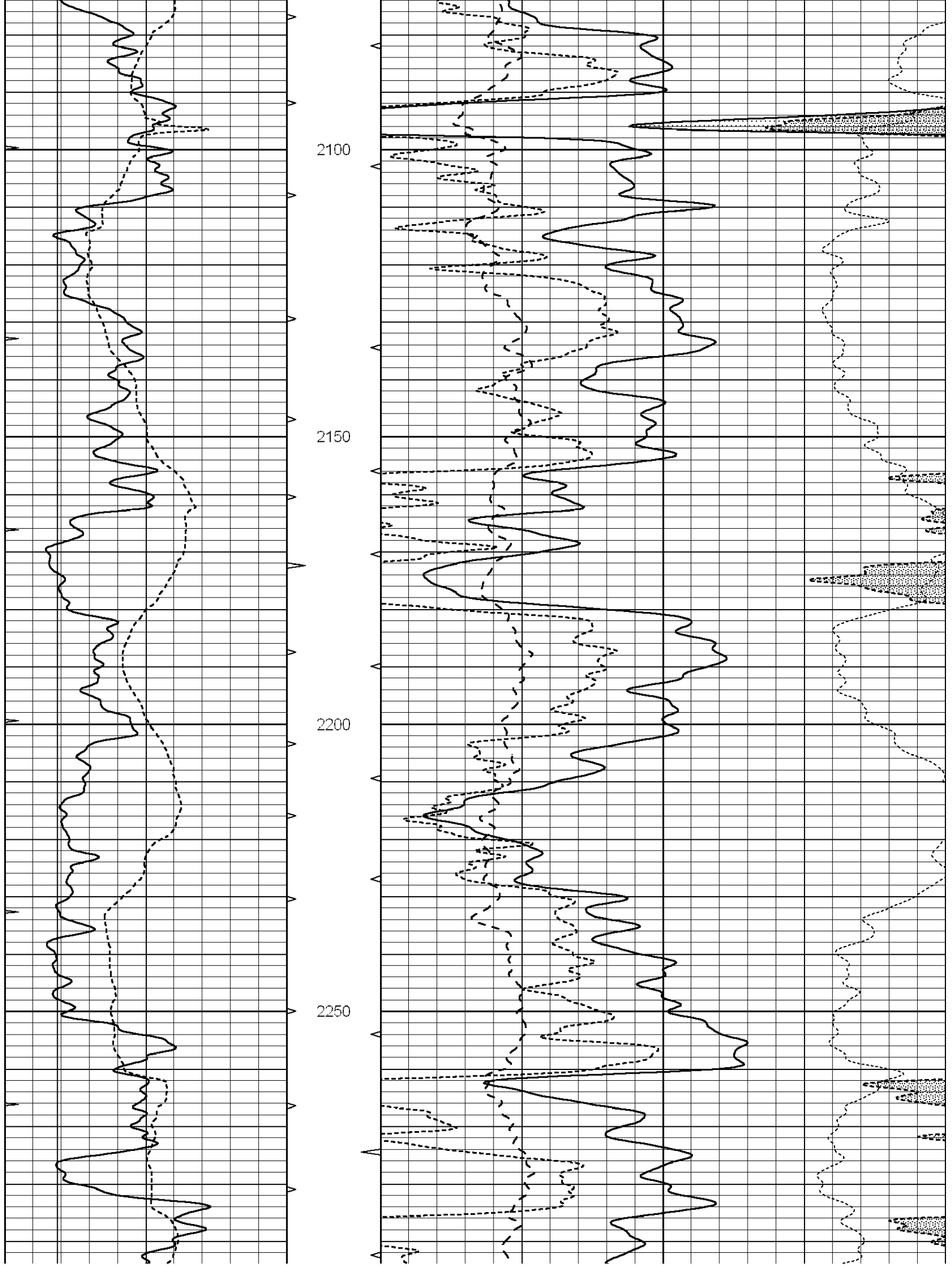


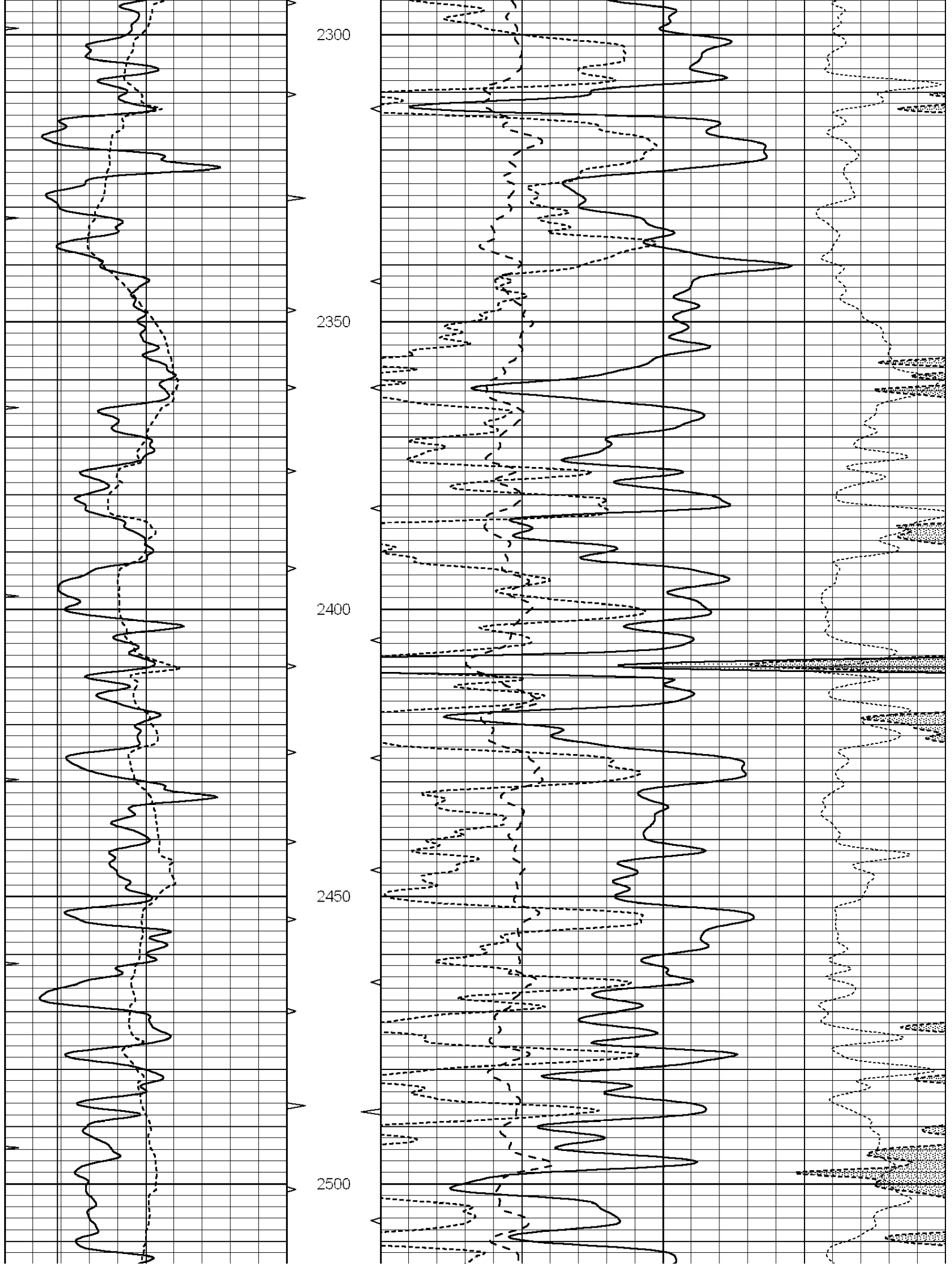
MAIN SECTION

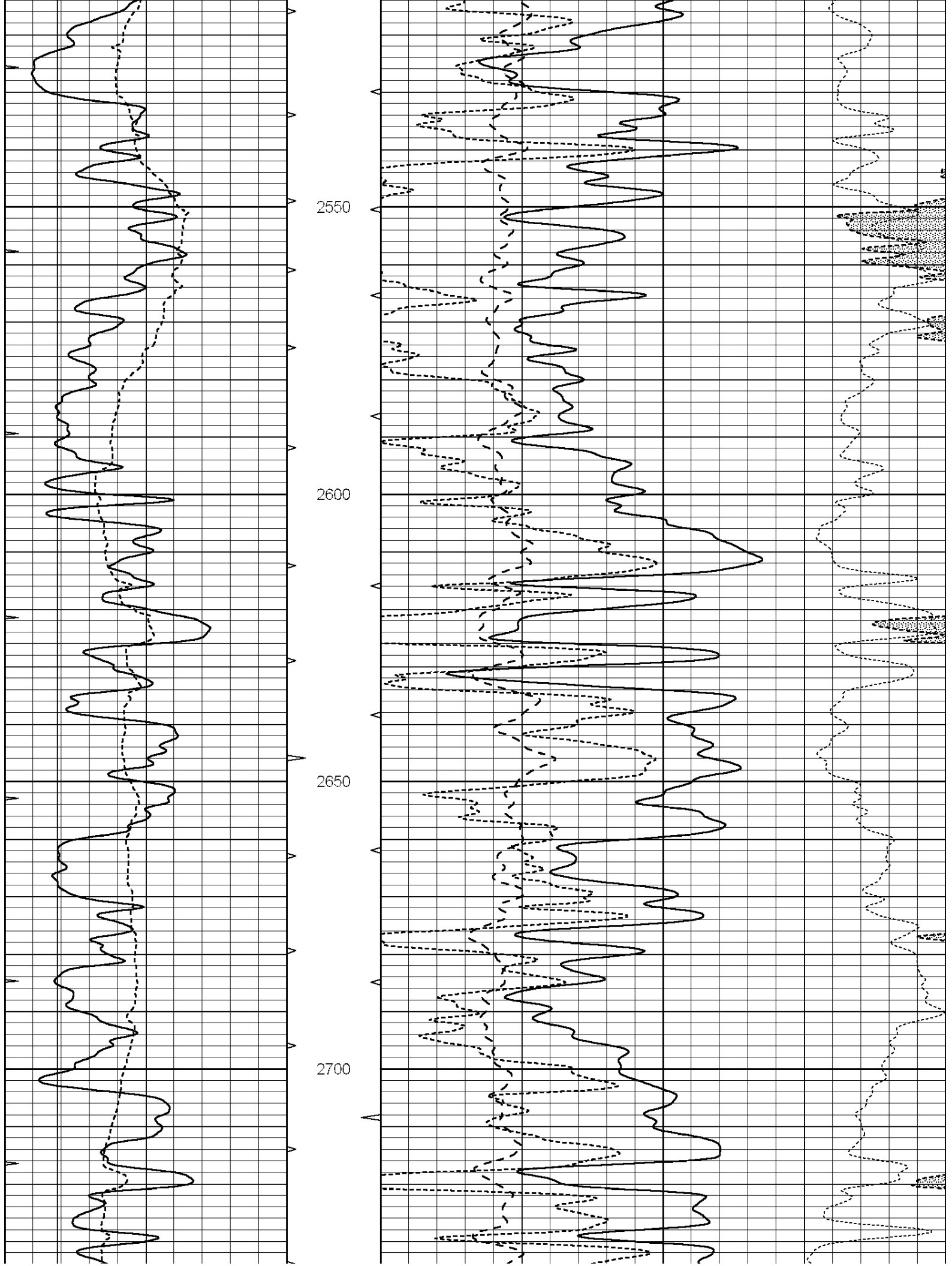
Database File: 24554pe.db
 Dataset Pathname: pass3.2
 Presentation Format: ldt_neu
 Dataset Creation: Tue Jul 15 20:15:48 2014 by Calc SOC 120430
 Charted by: Depth in Feet scaled 1:240

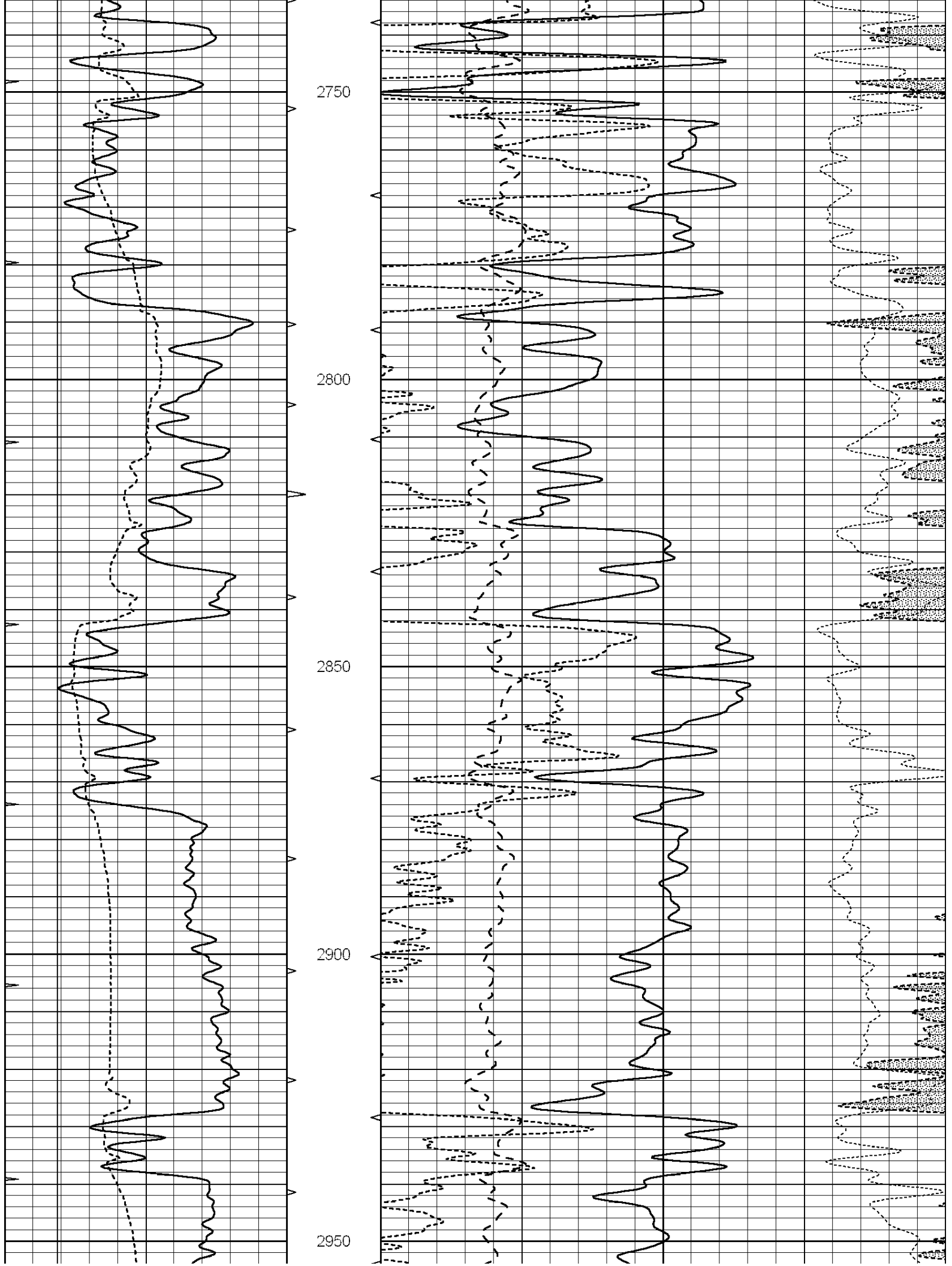
0	GAMMA RAY (GAPI)	150	ABHV	30	COMPENSATED DENSITY (pu)		-10
6	CALIPER (in)	16	10 (ft3)	0	COMPENSATED NEUTRON (pu)		-10
0	MINMK	20	TBHV	0	PE	10	-0.25 CORRECTION (g/cc) 0.25
			0 (ft3)	10			

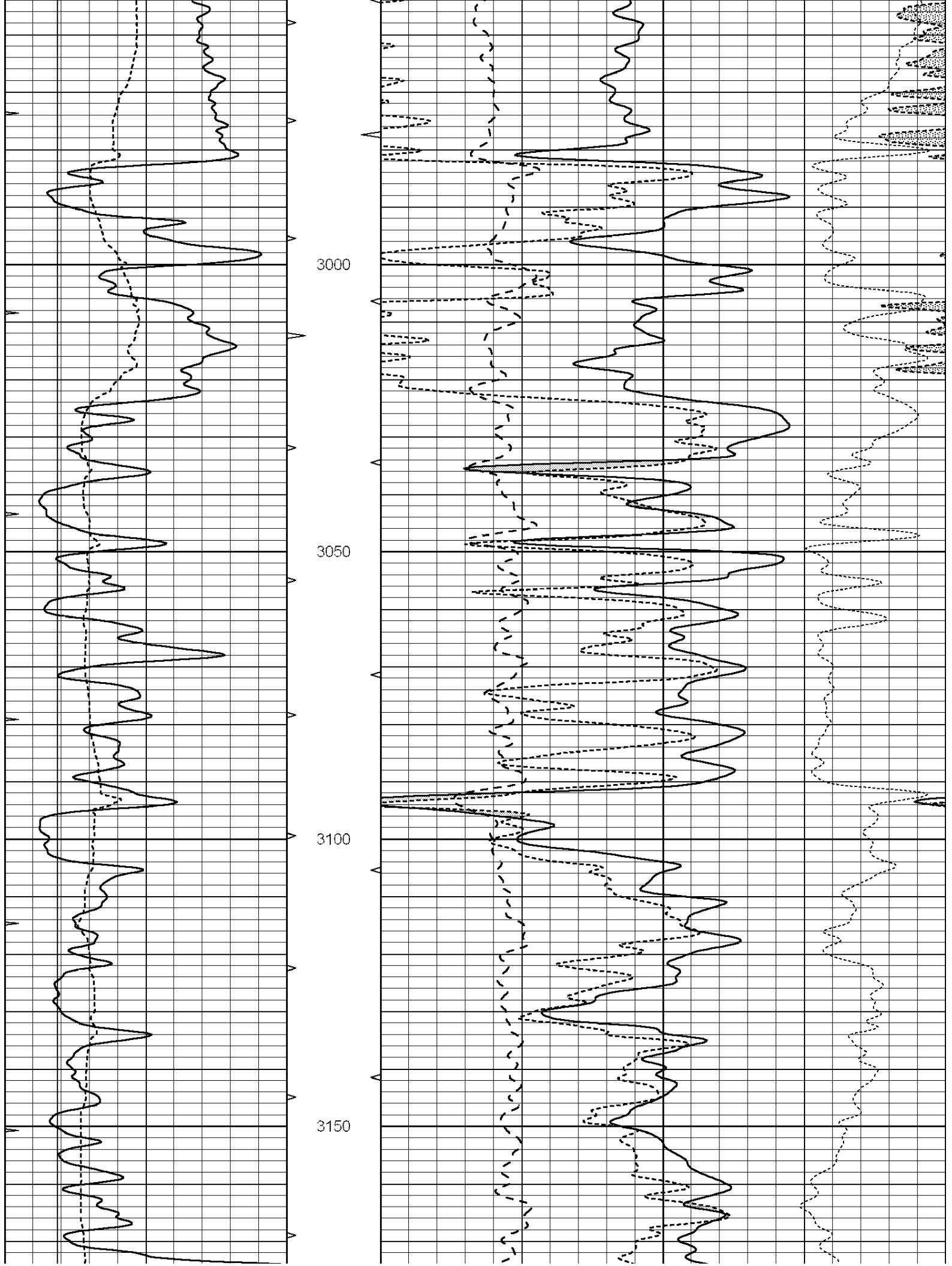


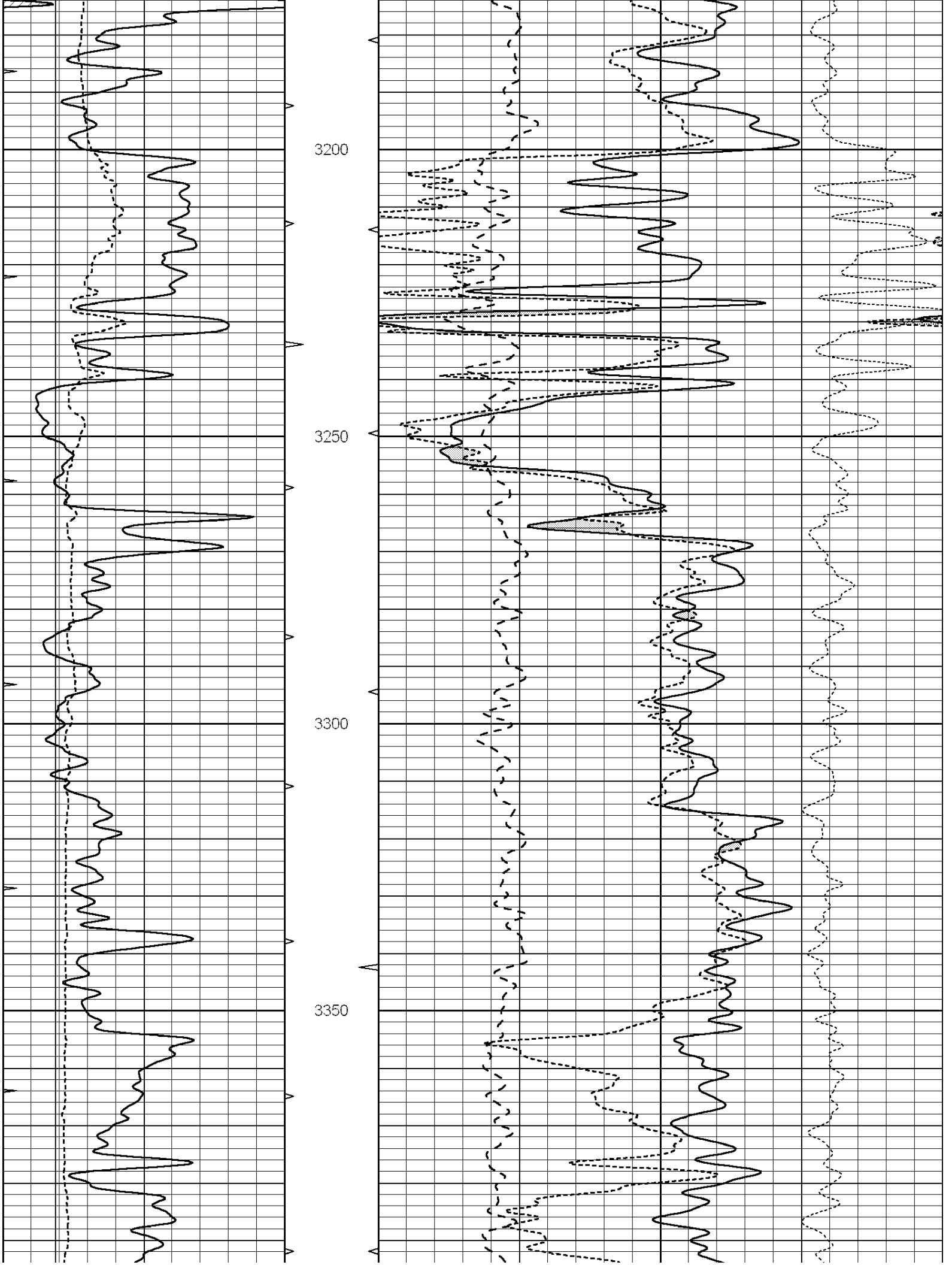


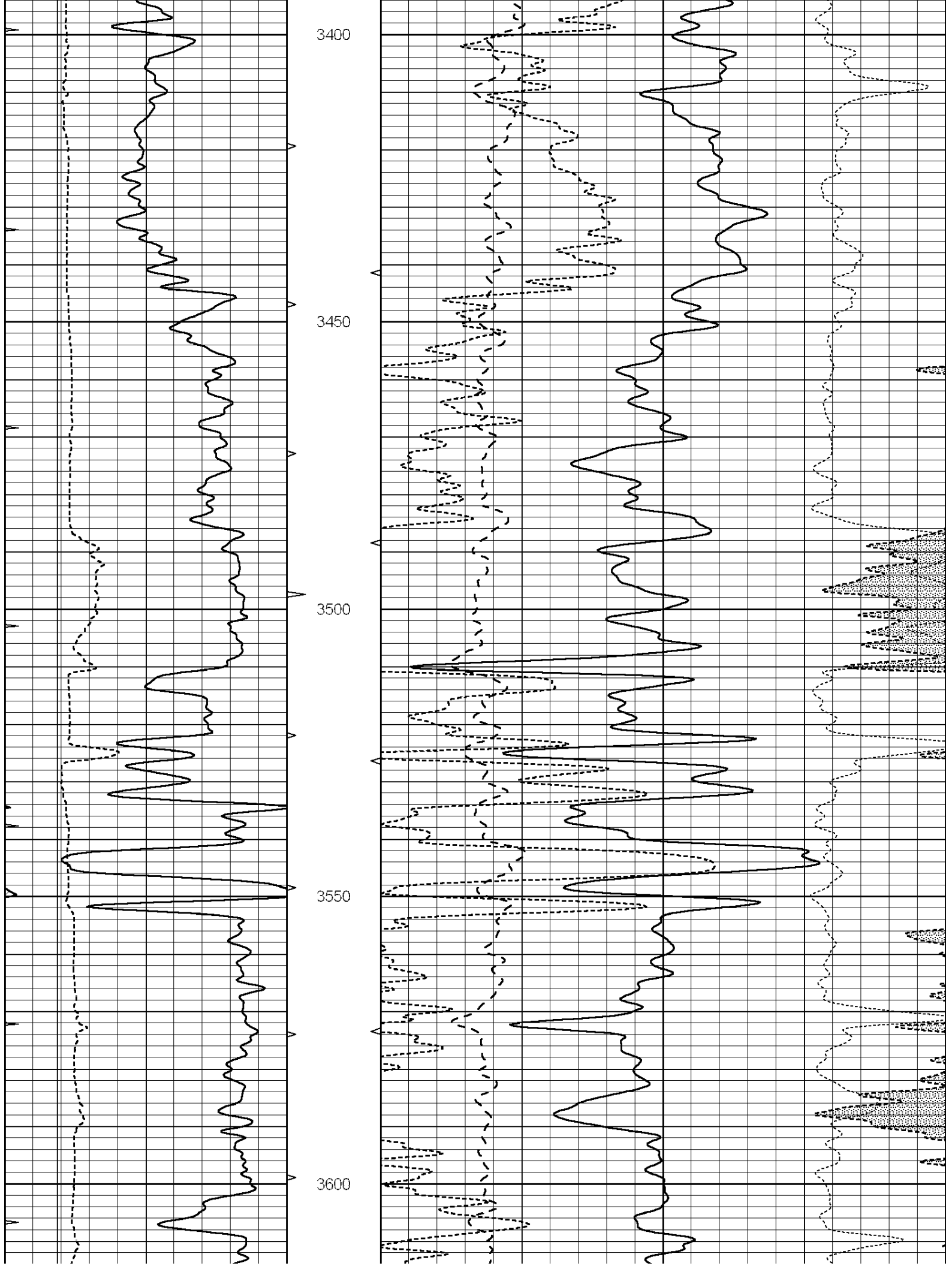


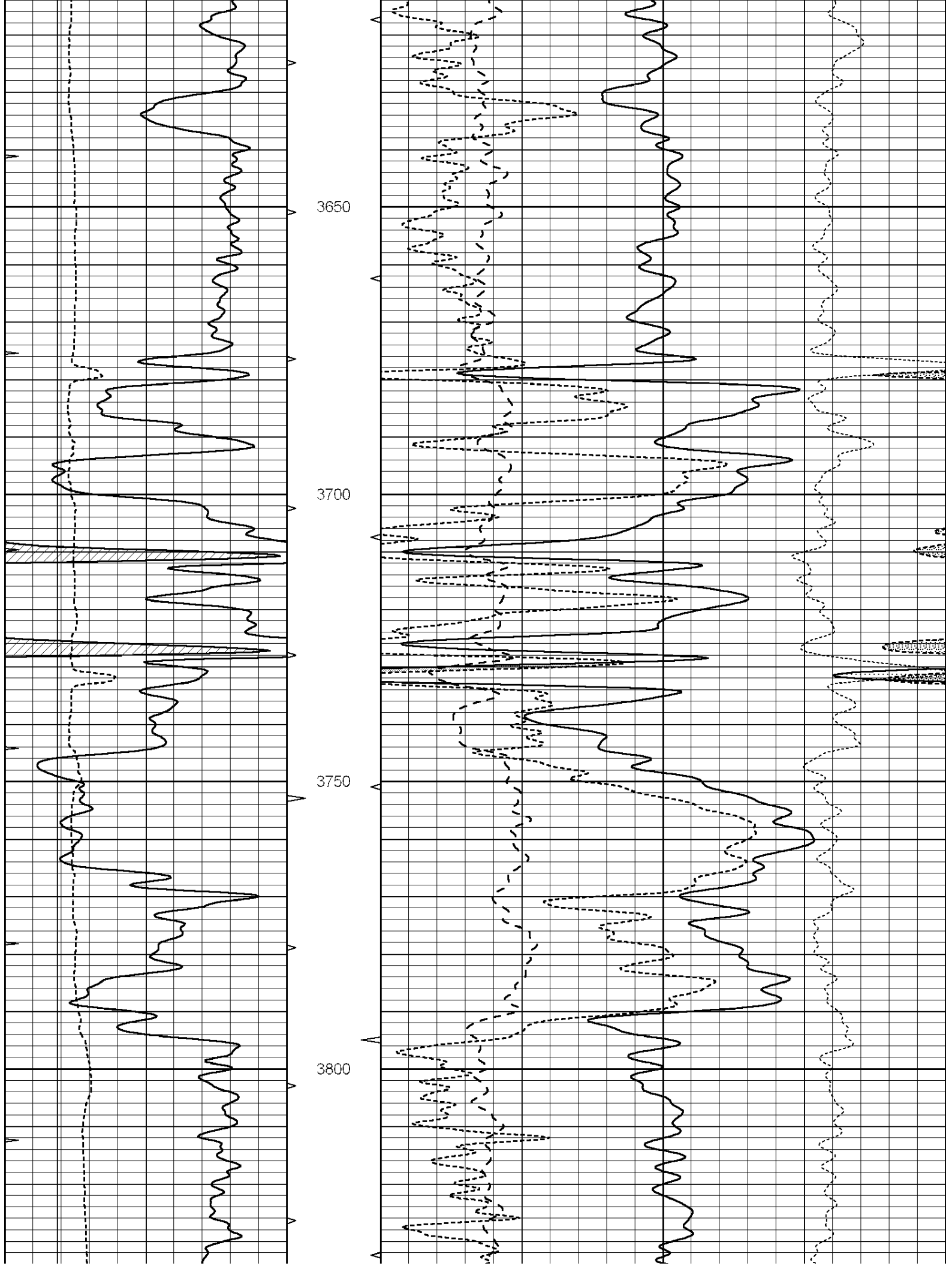


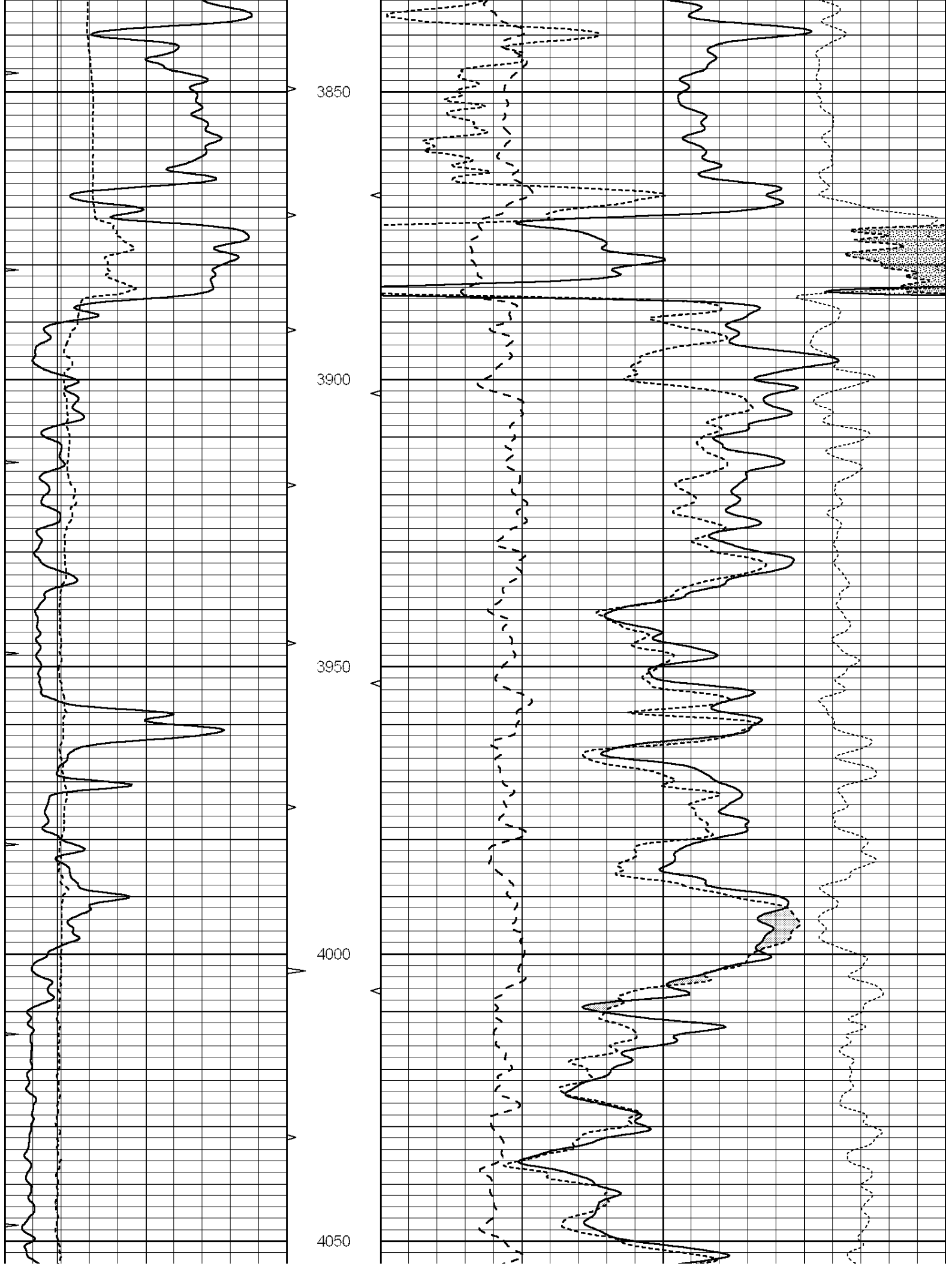


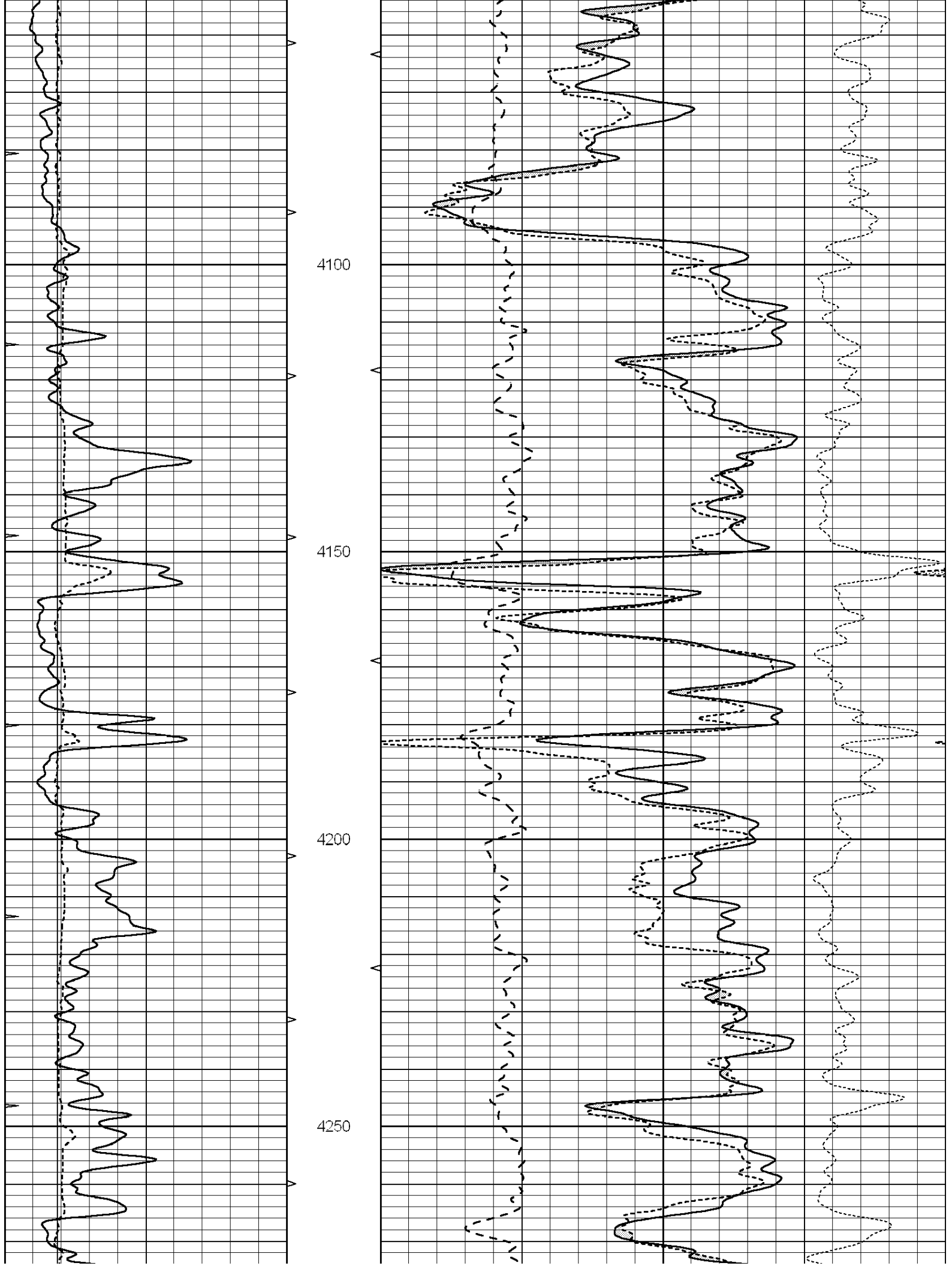


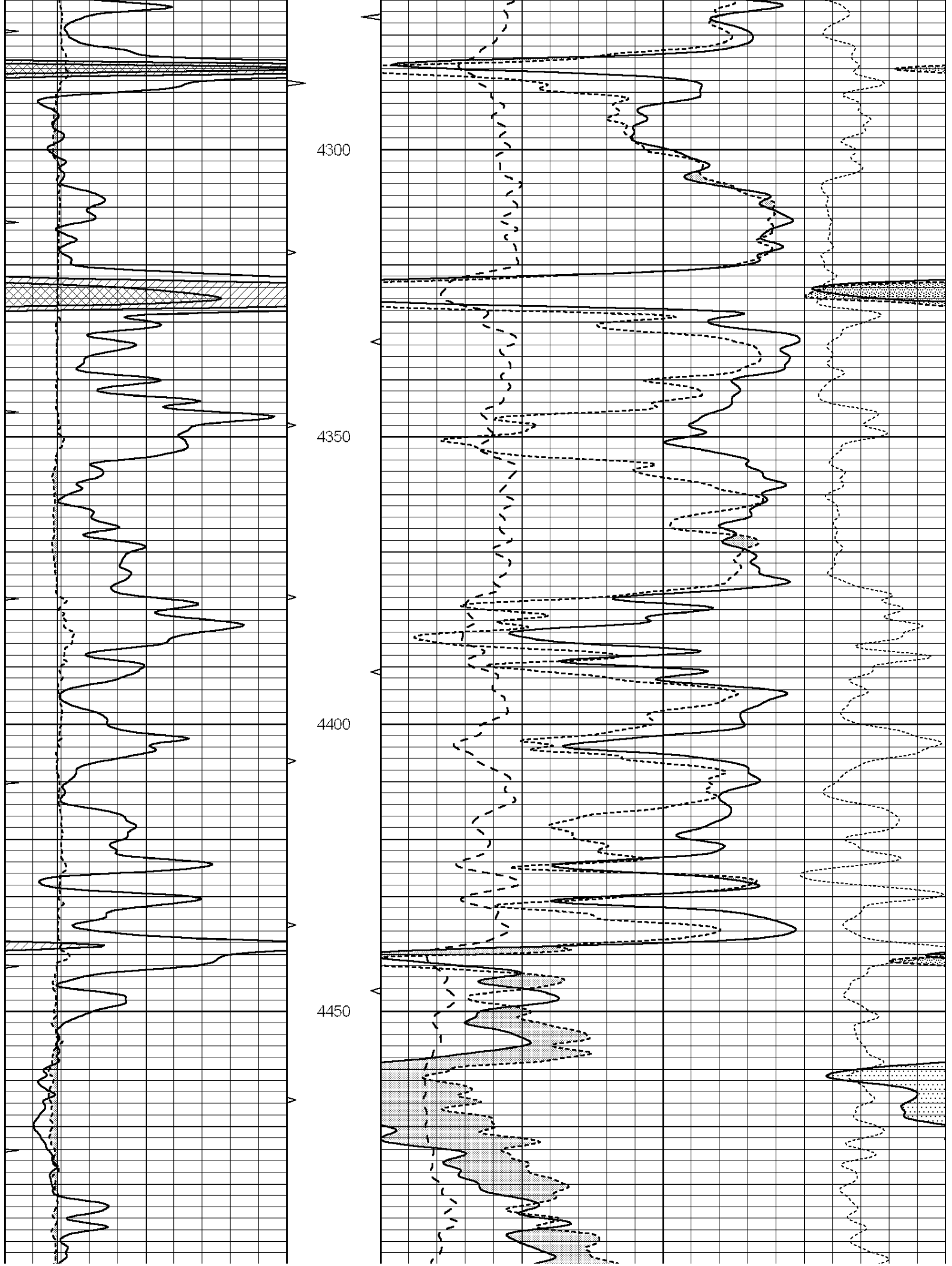


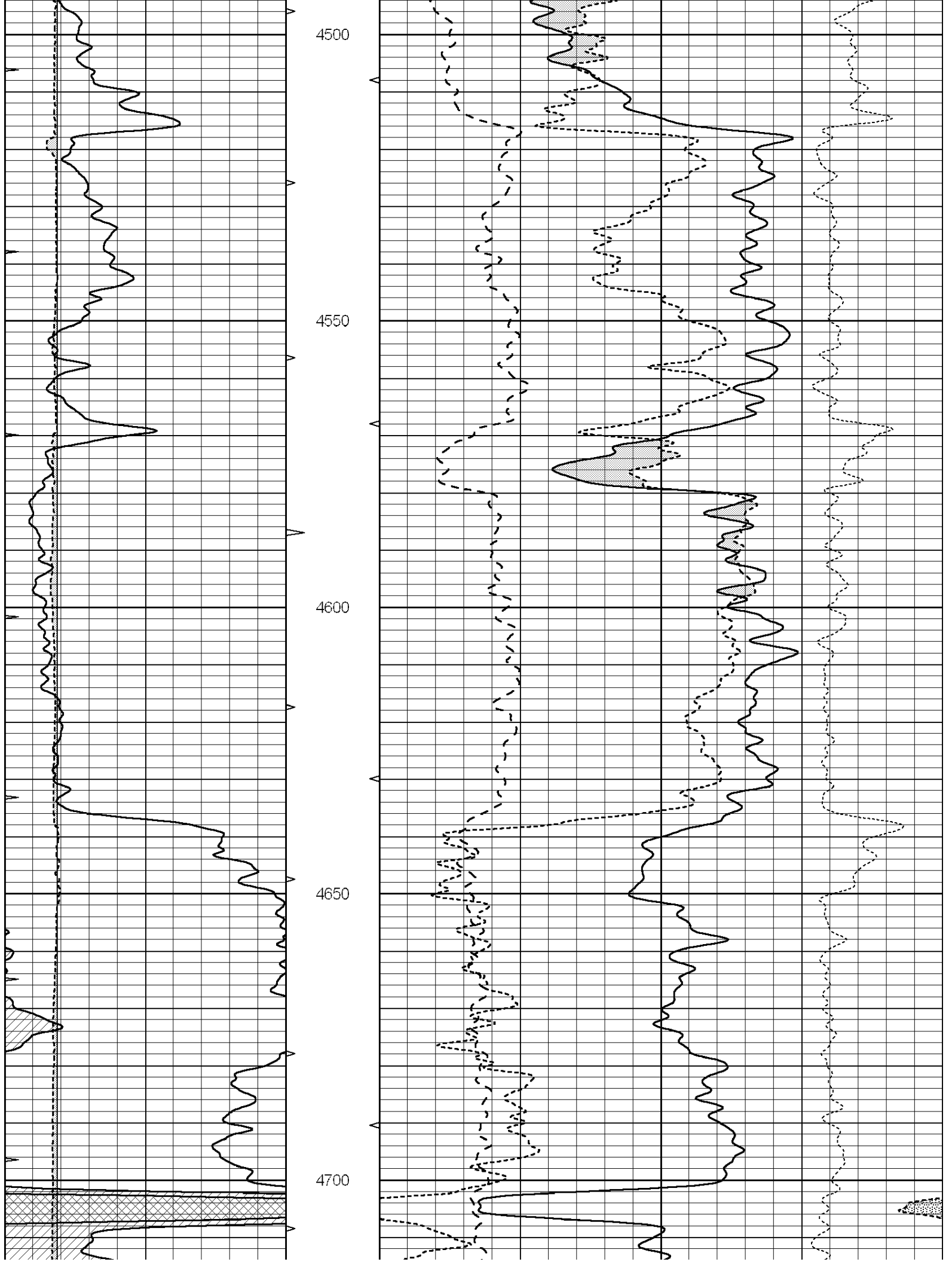


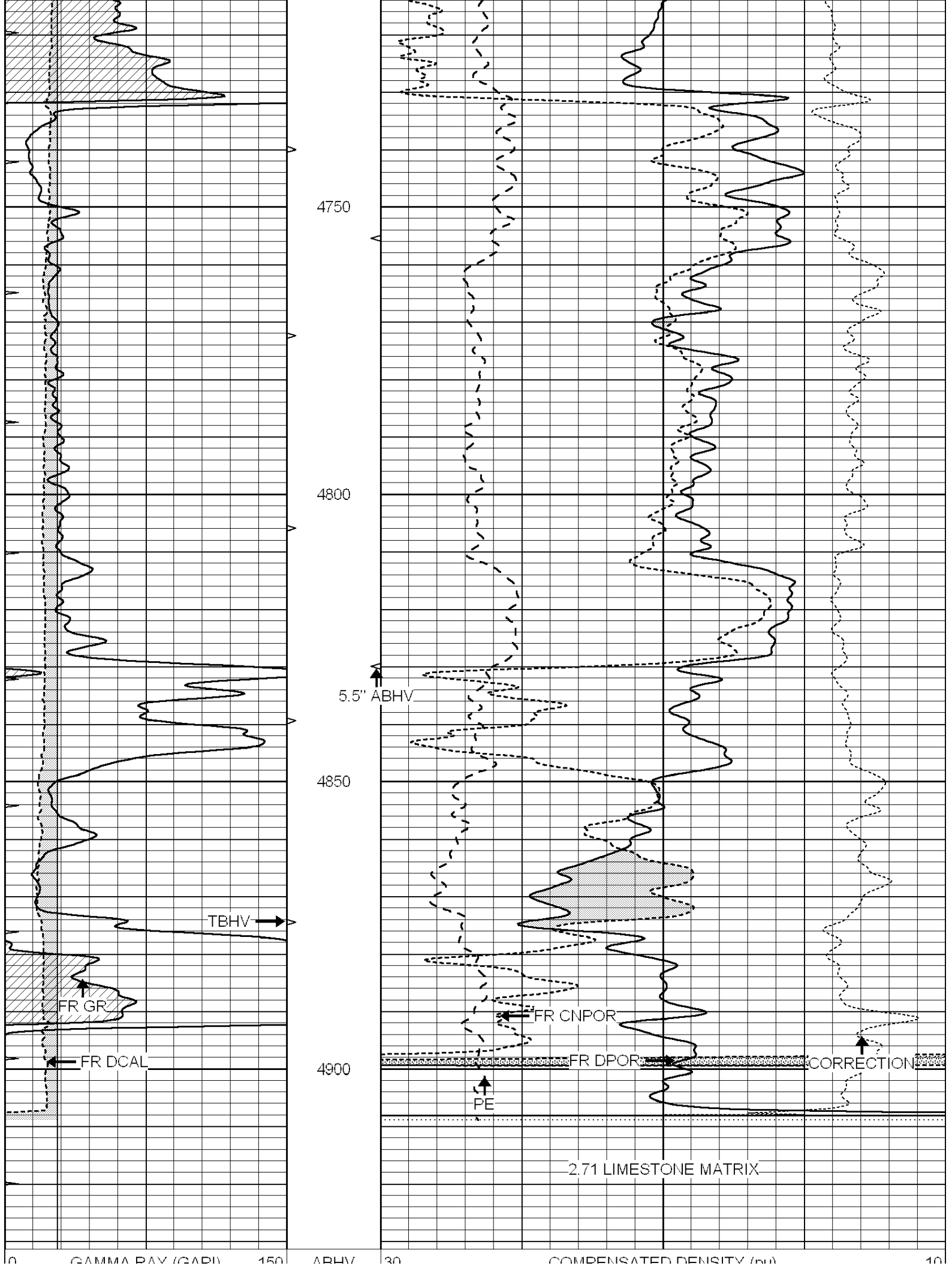












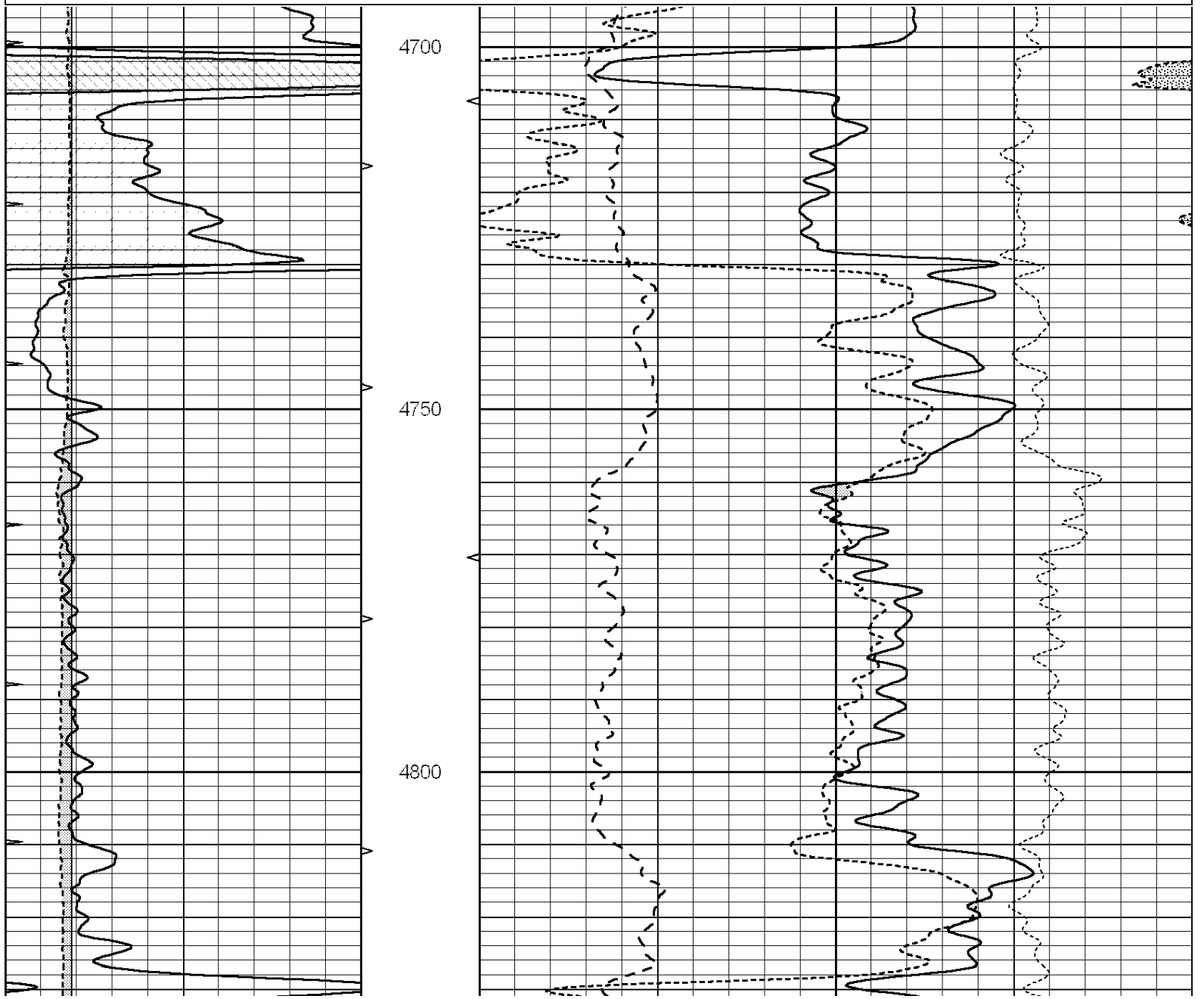
6	CALIPER (in)	16	10 (ft3)	0	30	COMPENSATED NEUTRON (pu)	-10
0	MINMK	20	TBHV	0	PE	10	-0.25 CORRECTION (g/cc) 0.25
			0 (ft3)	10			

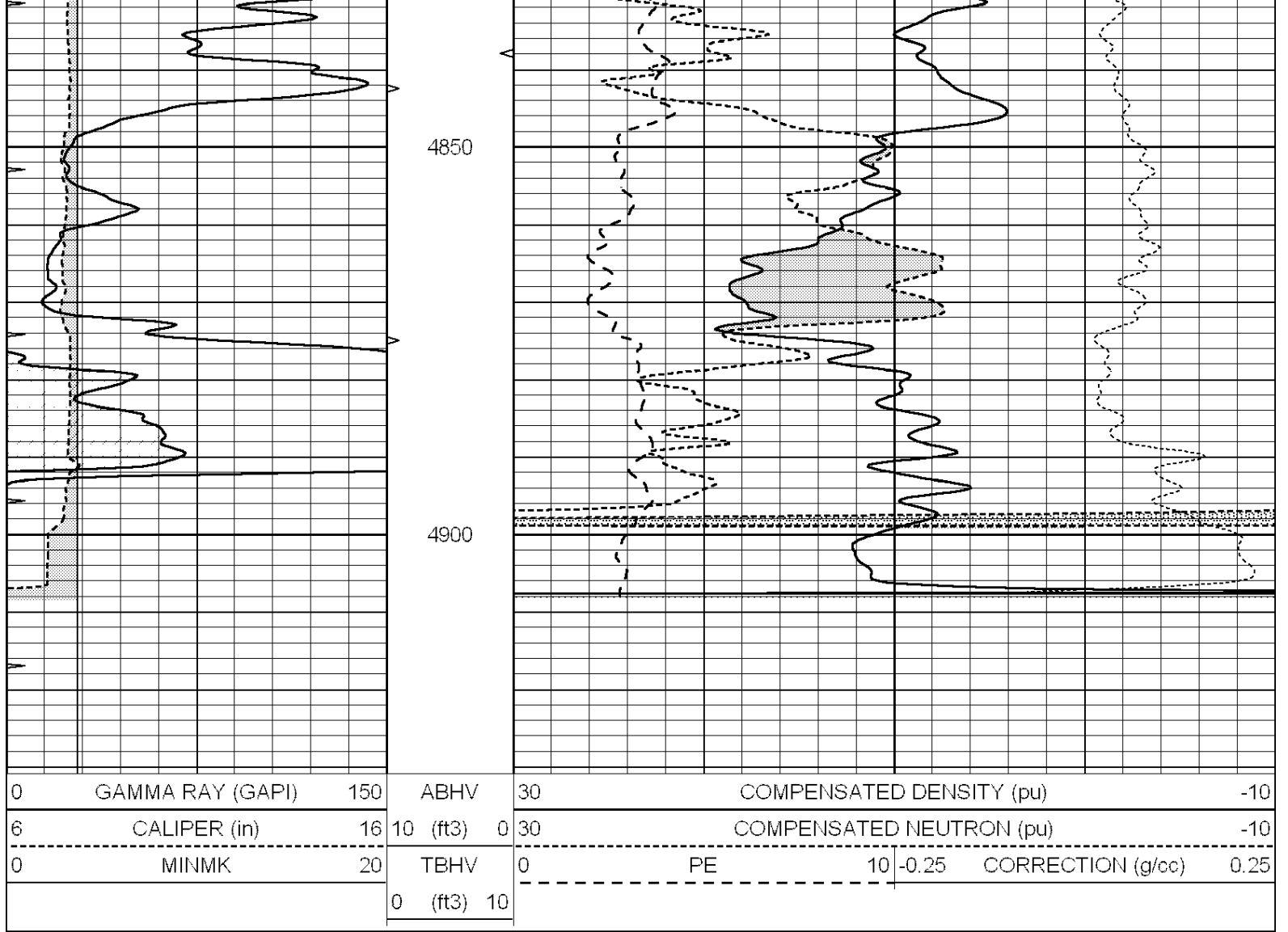


REPEAT SECTION

Database File: 24554pe.db
 Dataset Pathname: pass2.8
 Presentation Format: ldt_neu
 Dataset Creation: Tue Jul 15 20:22:52 2014 by Calc SOC 120430
 Charted by: Depth in Feet scaled 1:240

0	GAMMA RAY (GAPI)	150	ABHV	30	COMPENSATED DENSITY (pu)	-10	
6	CALIPER (in)	16	10 (ft3)	0	30	COMPENSATED NEUTRON (pu) -10	
0	MINMK	20	TBHV	0	PE	10	-0.25 CORRECTION (g/cc) 0.25
			0 (ft3)	10			





Calibration Report

Database File: 24554pe.db
 Dataset Pathname: pass3.2
 Dataset Creation: Tue Jul 15 20:15:48 2014 by Calc SOC 120430

Dual Induction Calibration Report

Serial-Model: PROBE9-DILG
 Surface Cal Performed: Tue Jul 15 18:19:28 2014
 Downhole Cal Performed: Mon Jul 28 12:02:56 2008
 After Survey Verification Performed: Mon Jul 28 12:02:56 2008

Surface Calibration

Loop:	Readings				References		Results	
	Air	Loop			Air	Loop	m	b
Deep	-0.014	0.629	V	0.000	400.000	mmho/m	670.000	-20.000
Medium	0.039	0.728	V	0.000	464.000	mmho/m	670.000	-25.000
Internal:	Zero				Cal		m	b
Deep	0.011	0.610	V	0.000	400.000	mmho/m	667.135	-7.256
Medium	0.005	0.712	V	0.000	464.000	mmho/m	655.677	-3.102

Downhole Calibration

Readings			References		Results	
Zero	Cal		Zero	Cal	m'	b'

Deep	0.000	0.000	mmho/m	14.508	388.384	mmho/m	1.000	0.000
Medium	0.000	0.000	mmho/m	166.367	504.400	mmho/m	1.000	0.000
LL3		7.500	V		1400.000	Ohm-m		
		0.000	V		20.000	Ohm-m		
		-7.200	V		4000.000	mmho-m		

After Survey Verification								
	Readings			Targets			Results	
	Zero	Cal		Zero	Cal		m'	b'
Deep	0.000	0.000	mmho/m	0.000	0.000	mmho/m	0.000	0.000
Medium	0.000	0.000	mmho/m	0.000	0.000	mmho/m	0.000	0.000
LL3		1.000	Ohm-m		1.000	Ohm-m		
		0.000	Ohm-m		0.000	Ohm-m		
		1.000	mmho-m		1.000	mmho-m		

Litho Density Calibration Report
Serial: 004N Model: PRB

Master Calibration		Performed Fri May 30 11:01:00 2014						
	Background	Magnesium	Aluminum	Sandstone				
Window 1	1378.8	10804.6	3492.0	12453.4				cps
Window 2	1262.4	9313.5	3076.7	10594.7				cps
Window 3	1077.6	5668.7	2076.0	6314.8				cps
Window 4	306.4	313.0	306.4	315.6				cps
Long Space	0.0	8051.0	1814.3	9332.3				cps
Short Space	1.9	1706.1	1146.0	1707.6				cps
Rho		1.7100	2.5900	1.3800				g/cc
Pe		0.0000	2.5700	1.5500				
Rib Angle	: 45.0	Rib Slope	: 1.002	Density/Spine Ratio				: 0.571
Spine Angle	: 75.0	Spine Slope	: 3.745	Spine Intercept				: -18.9

Before Survey Verification		Performed Wed Dec 31 18:00:00 1969						
Window 1	0.0	0.0	0.0	0.0	0.0	0.0	0.0	cps
Window 2	0.0	0.0	0.0	0.0	0.0	0.0	0.0	cps
Window 3	0.0	0.0	0.0	0.0	0.0	0.0	0.0	cps
Window 4	0.0	0.0	0.0	0.0	0.0	0.0	0.0	cps
Long Space	0.0	0.0	0.0	0.0	0.0	0.0	0.0	cps
Short Space	0.0	0.0	0.0	0.0	0.0	0.0	0.0	cps
Measured Rho		0.0000	0.0000	0.0000	0.0000	0.0000	0.0000	g/cc
Measured Correction		0.0000	0.0000	0.0000	0.0000	0.0000	0.0000	g/cc
Measured Pe			0.0000	0.0000	0.0000	0.0000	0.0000	

After Survey Verification		Performed Wed Dec 31 18:00:00 1969						
Window 1	0.0	0.0	0.0	0.0	0.0	0.0	0.0	cps
Window 2	0.0	0.0	0.0	0.0	0.0	0.0	0.0	cps
Window 3	0.0	0.0	0.0	0.0	0.0	0.0	0.0	cps
Window 4	0.0	0.0	0.0	0.0	0.0	0.0	0.0	cps
Long Space	0.0	0.0	0.0	0.0	0.0	0.0	0.0	cps
Short Space	0.0	0.0	0.0	0.0	0.0	0.0	0.0	cps
Measured Rho		0.0000	0.0000	0.0000	0.0000	0.0000	0.0000	g/cc
Measured Correction		0.0000	0.0000	0.0000	0.0000	0.0000	0.0000	g/cc
Measured Pe			0.0000	0.0000	0.0000	0.0000	0.0000	

Serial Number: 070808
Tool Model: Probe

PRE-SURVEY VERIFICATION

Detector	Readings	Measured	Target
Short Space	cps		
Long Space	cps	pu	pu

POST-SURVEY VERIFICATION

Detector	Readings	Measured	Target
Short Space	cps		
Long Space	cps	pu	pu

Gamma Ray Calibration Report

Serial Number: 070558
Tool Model: OPEN_GR
Performed: Mon Jun 30 21:53:39 2014

Calibrator Value: 1.0 GAPI

Background Reading: 0.0 cps
Calibrator Reading: 1.0 cps

Sensitivity: 0.2800 GAPI/cps