



Pioneer Energy Services

Dual Induction Log

15-109-21,138-00-00

API No.

Company **Blake Exploration, LLC**

Well **Audrey No. 1**

Field

County **Logan**

State

Kansas

Location

NW SE SE SW
400' FSL & 2,100' FWL

Sec: 31

Twp: 13S

Rge: 32W

Other Services
CNL/CDL
MEL/BHCS

Permanent Datum

Ground Level

Elevation 2864

Log Measured From

11 Ft. Above Perm. Datum

K.B. 2875
D.F.
G.L. 2864

Drilling Measured From

Kelly Bushing

11 Ft. Above Perm. Datum

K.B. 2875
D.F.
G.L. 2864

Date

11/14/2012

Run Number

One

Depth Driller

4550

Depth Logger

4547

Bottom Logged Interval

4546

Top Log Interval

200

Casing Driller

8.625 @ 224

Casing Logger

223

Bit Size

7.875

Type Fluid in Hole

Chemical

Salinity,ppm CL

8000

Density / Viscosity

9.3 67

pH / Fluid Loss

11.0 7.2

Source of Sample

Flowline

Rm @ Meas. Temp

.40 @ 62

Rmf @ Meas. Temp

.30 @ 62

Rmc @ Meas. Temp

.54 @ 62

Source of Rmf / Rmc

Charts

Rm @ BHT

.20 @ 122

Operating Rig Time

4 1/2 Hours

Max Rec. Temp. F

122

Equipment Number

108

Location

Hays

Recorded By

J. Long

Witnessed By

Michael A. Davignon

<<< Fold Here >>>

All interpretations are opinions based on inferences from electrical or other measurements and we cannot and do not guarantee the accuracy or correctness of any interpretation, and we shall not, except in the case of gross or willful negligence on our part, be liable or responsible for any loss, costs, damages, or expenses incurred or sustained by anyone resulting from any interpretation made by any of our officers, agents or employees. These interpretations are also subject to our general terms and conditions set out in our current Price Schedule.

Comments

Thank you for using Pioneer Energy Services
www.pioneerenergy.com
785 625 3858

Oakley, 17 South to Mustang Road, 3 1/2 West, North Into

Database File: c:\warrior\data\blake exp_audrey #1\blake_audrey_1hd.db
Dataset Pathname: dil\blakstck
Presentation Format: dil2in
Dataset Creation: Tue Nov 13 07:08:11 2012
Charted by: Depth in Feet scaled 1:600

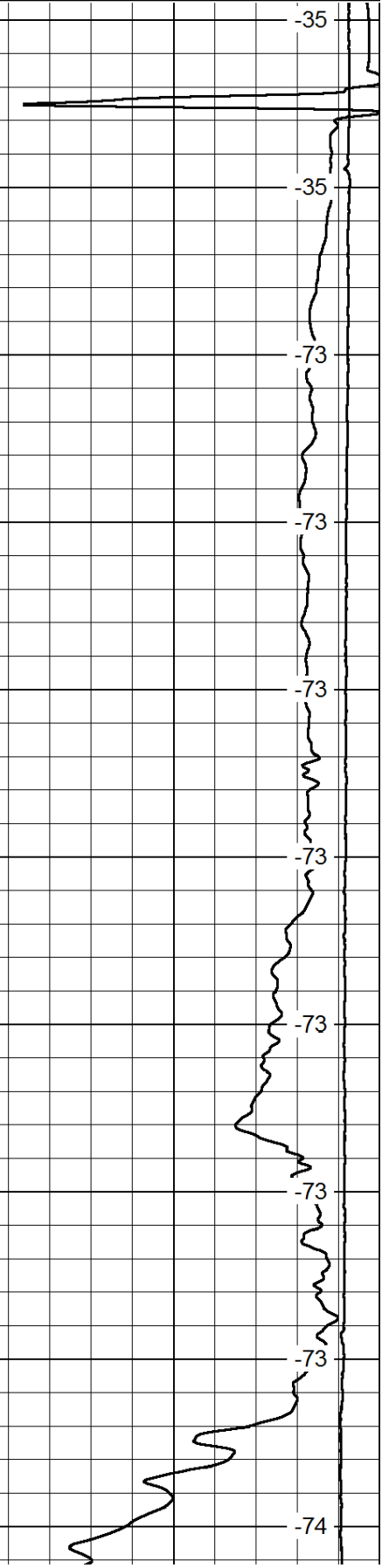
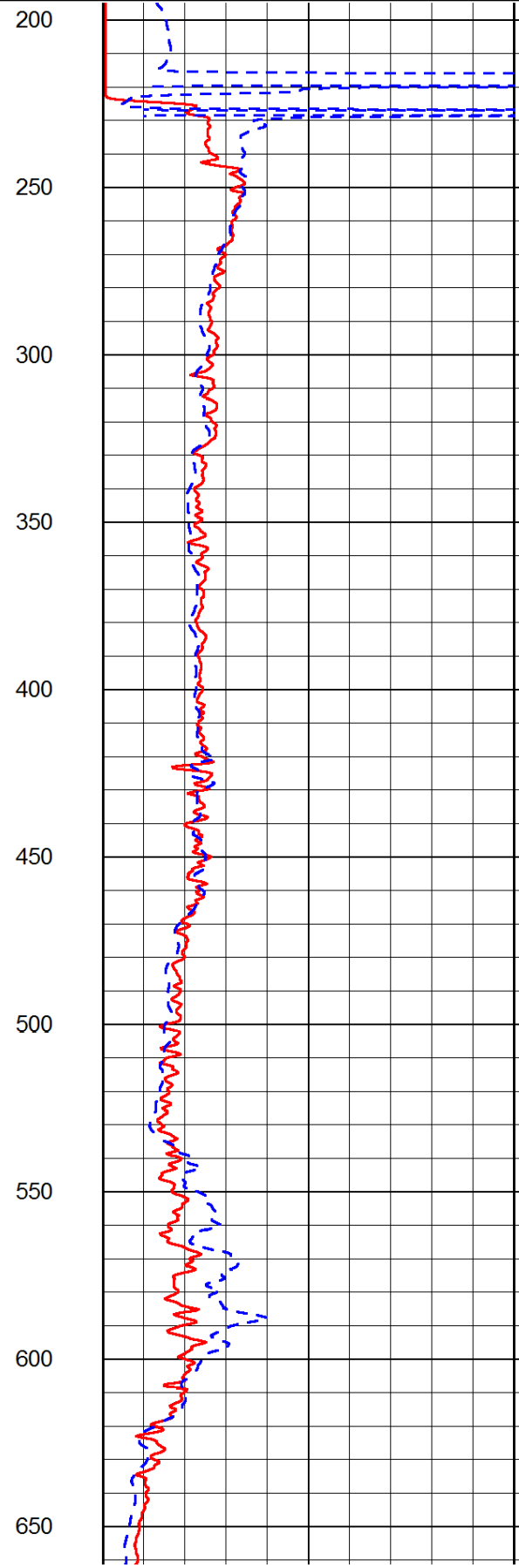
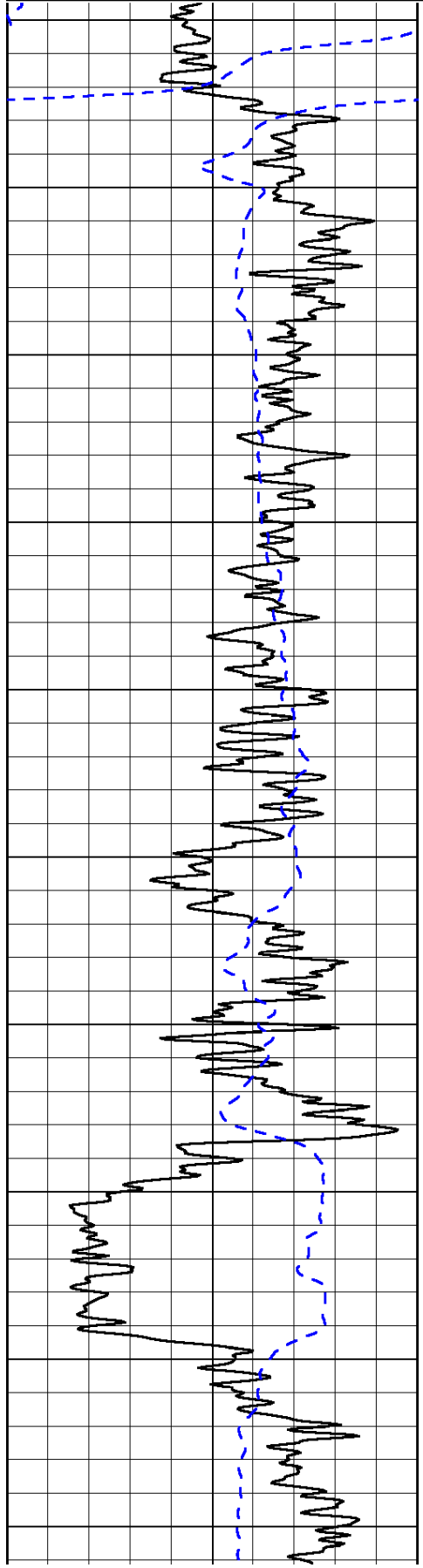
0	Gamma Ray	150
-200	SP (mV)	0

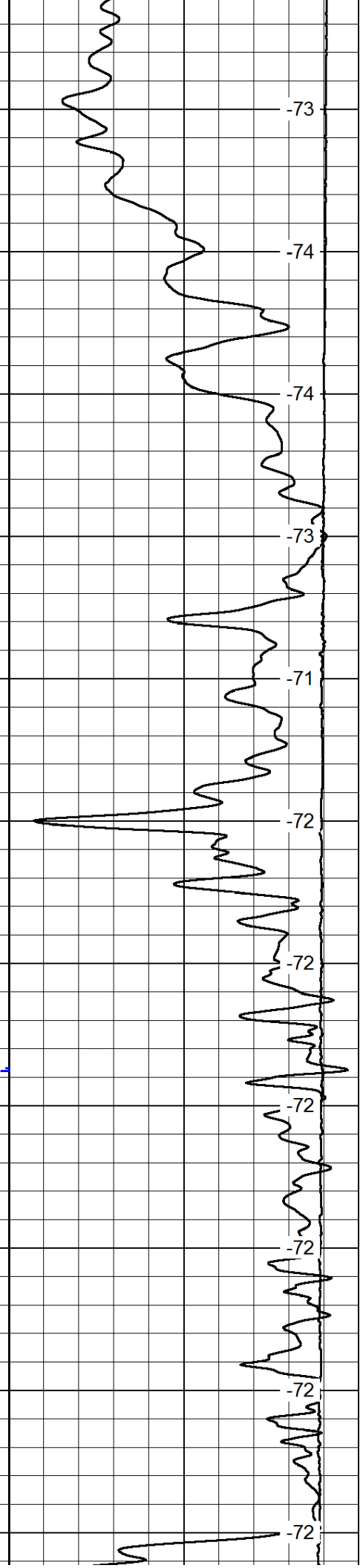
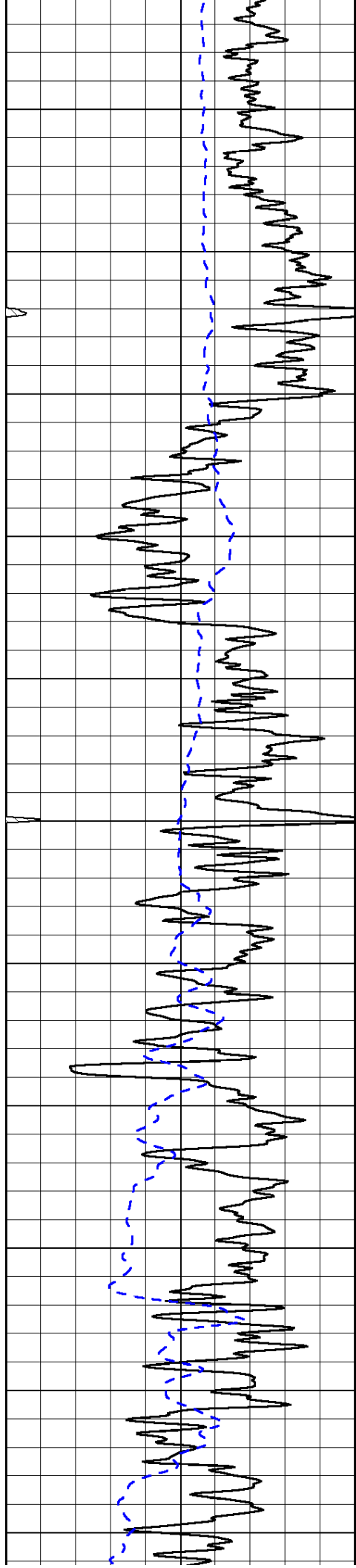
0	Shallow Resistivity	50
0	Deep Resistivity	50

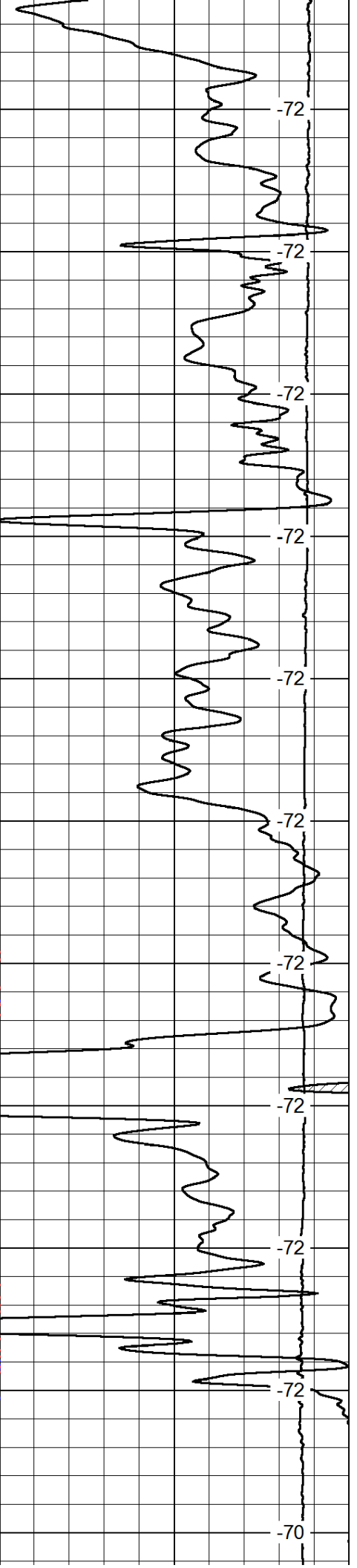
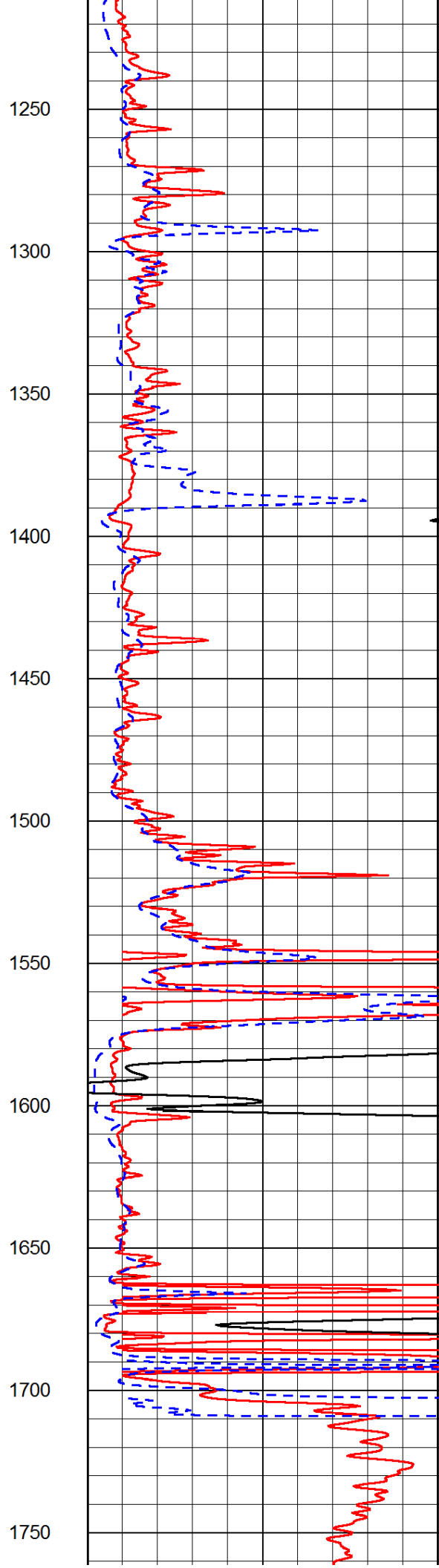
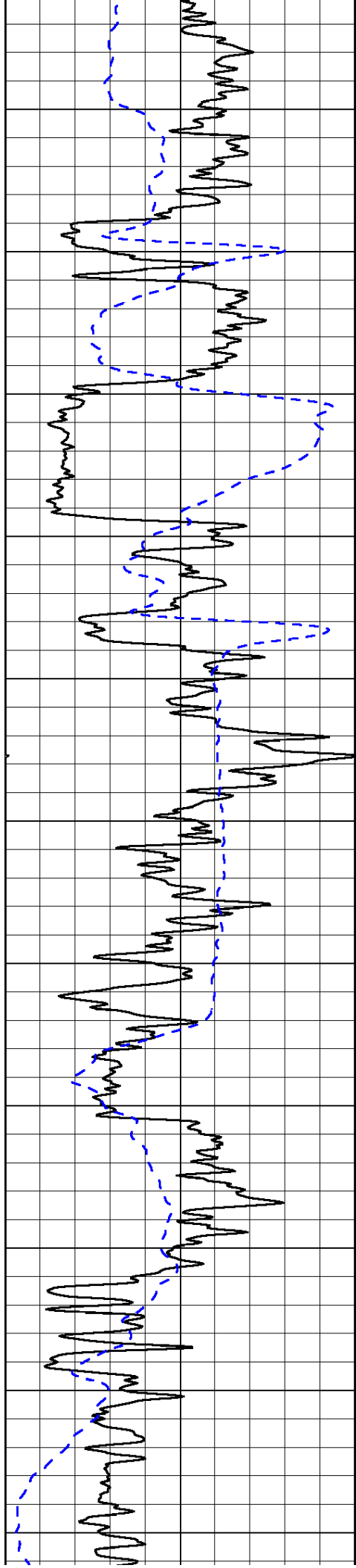
LSPD

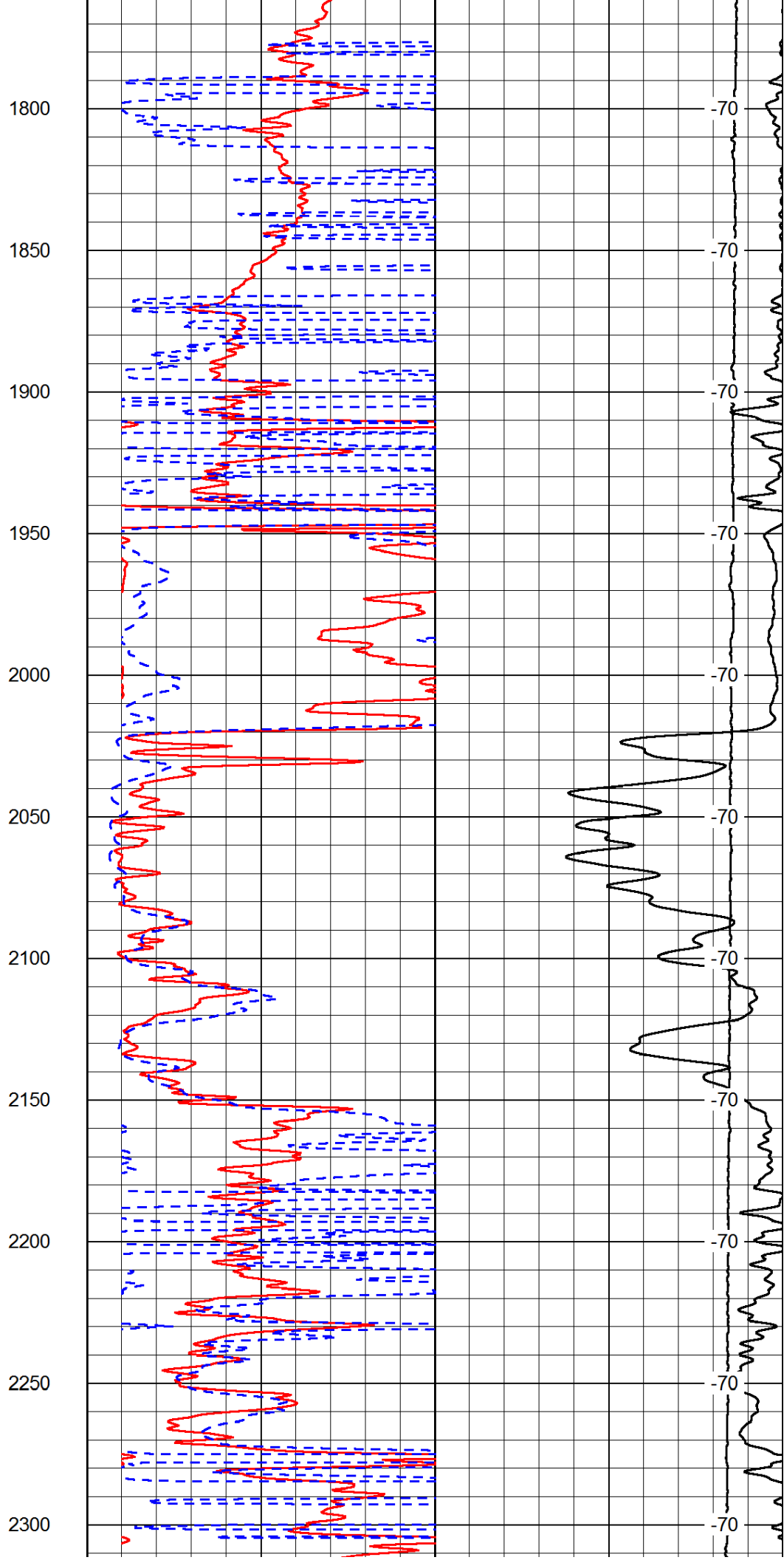
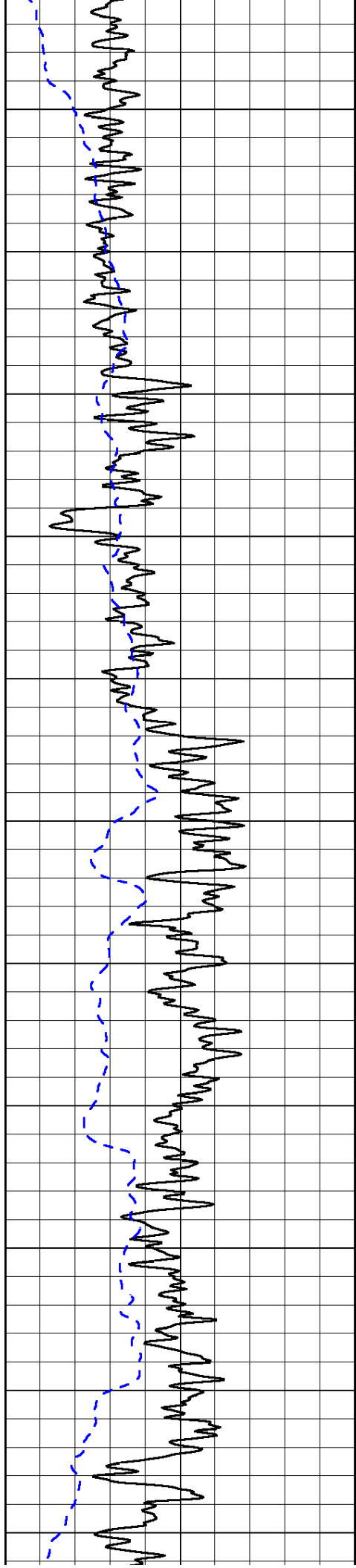
1000	Conductivity	0
15000	Line Tension	0

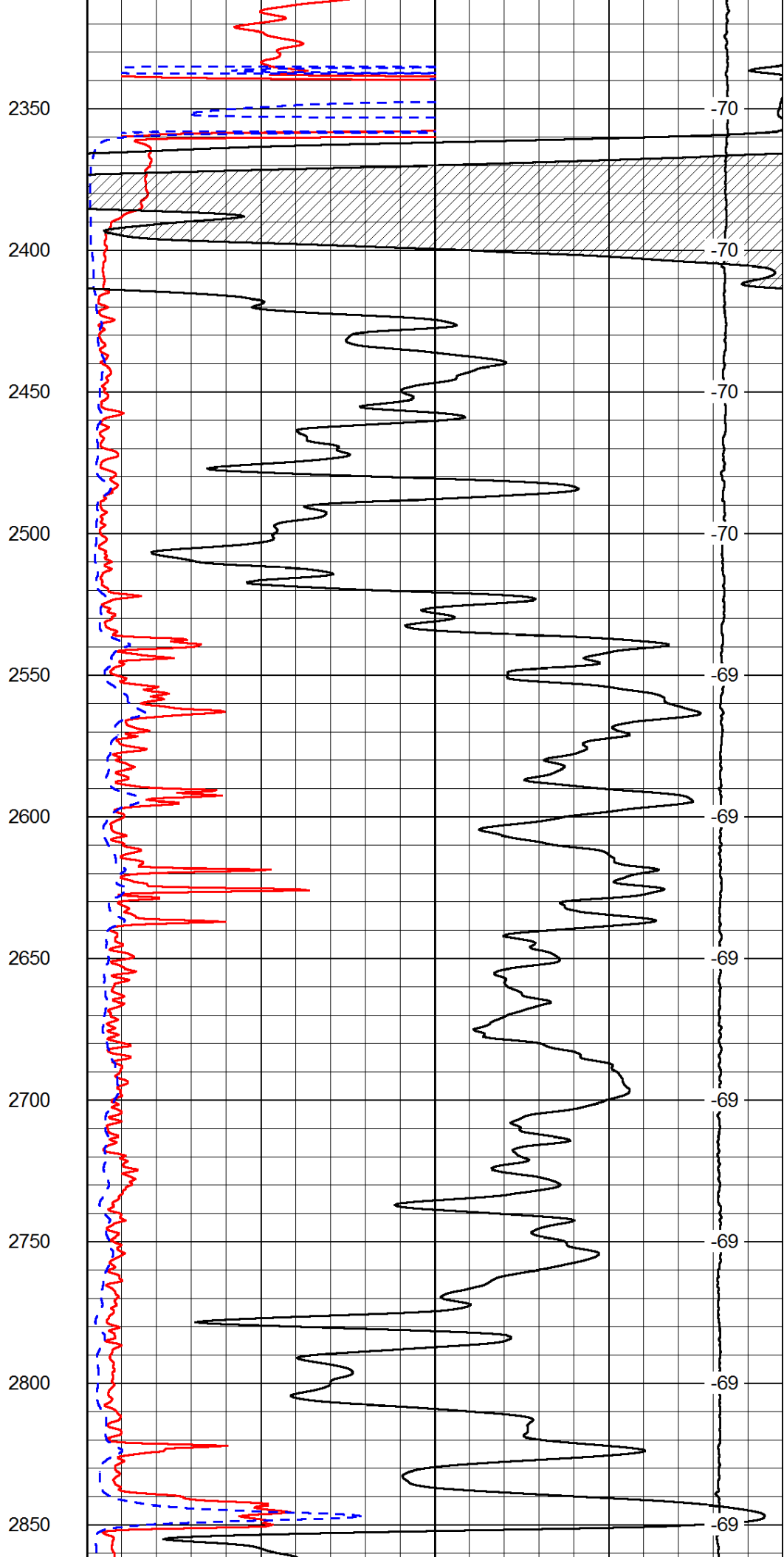
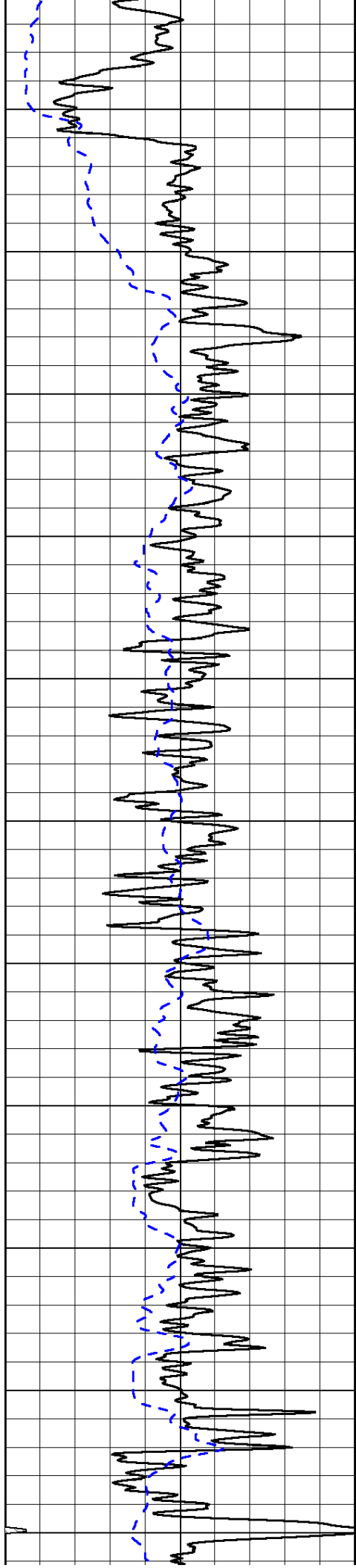
50	Shallow Resistivity	500
50	Deep Resistivity	500

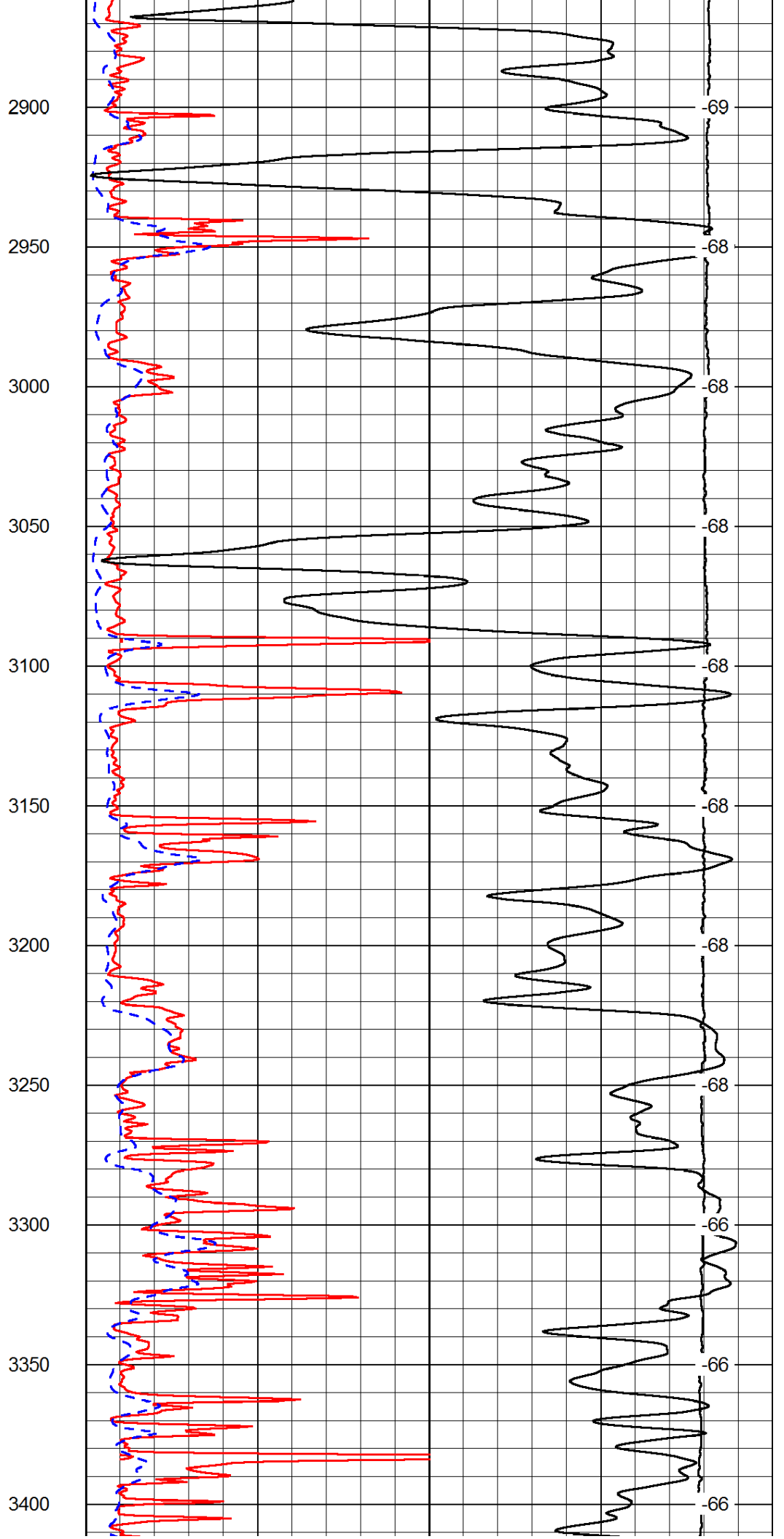
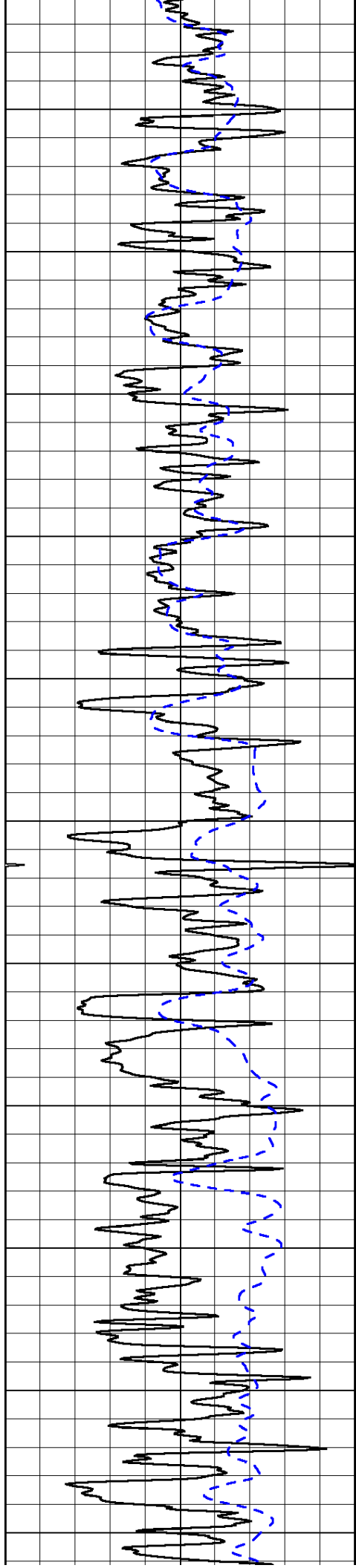


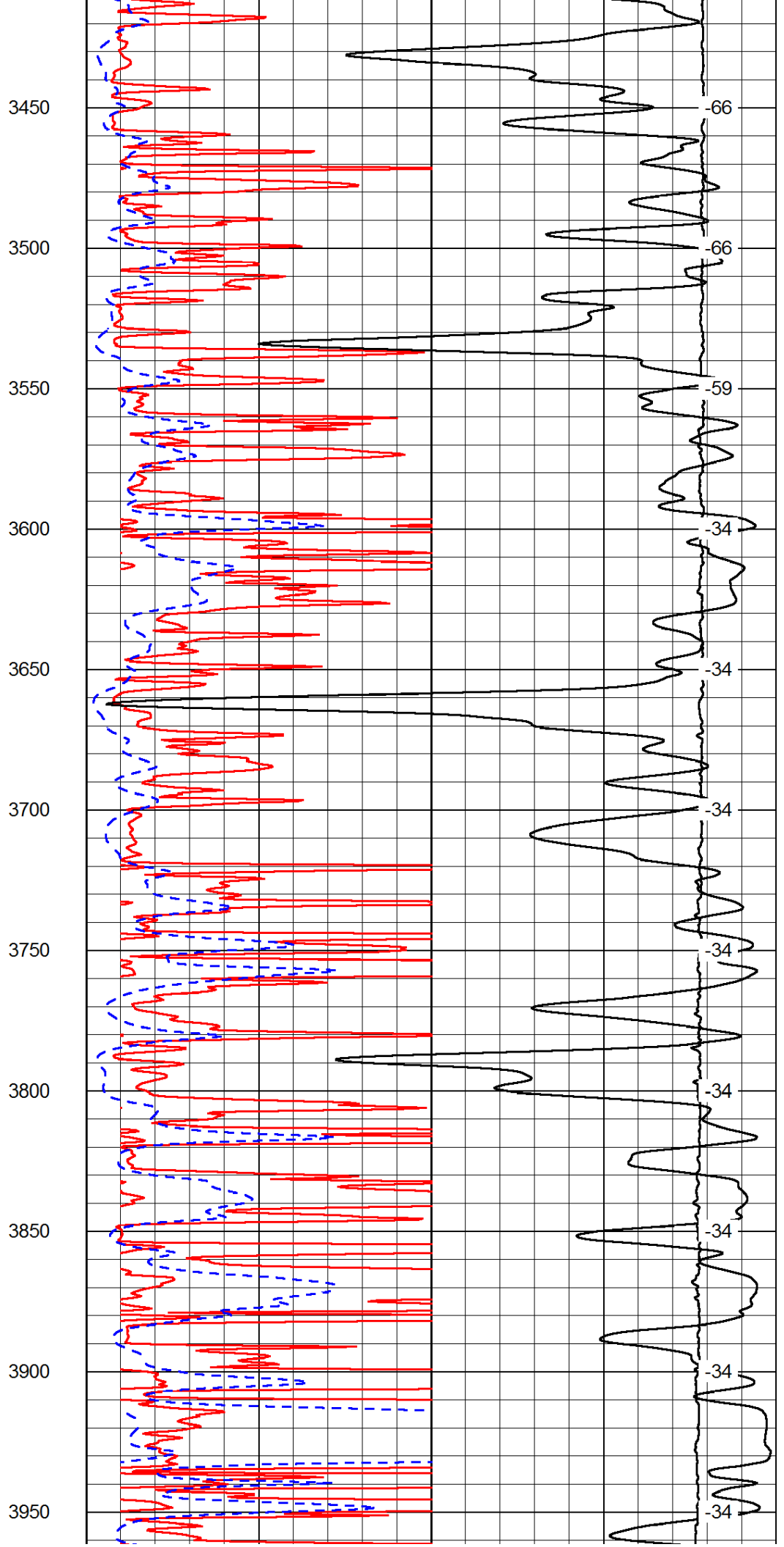
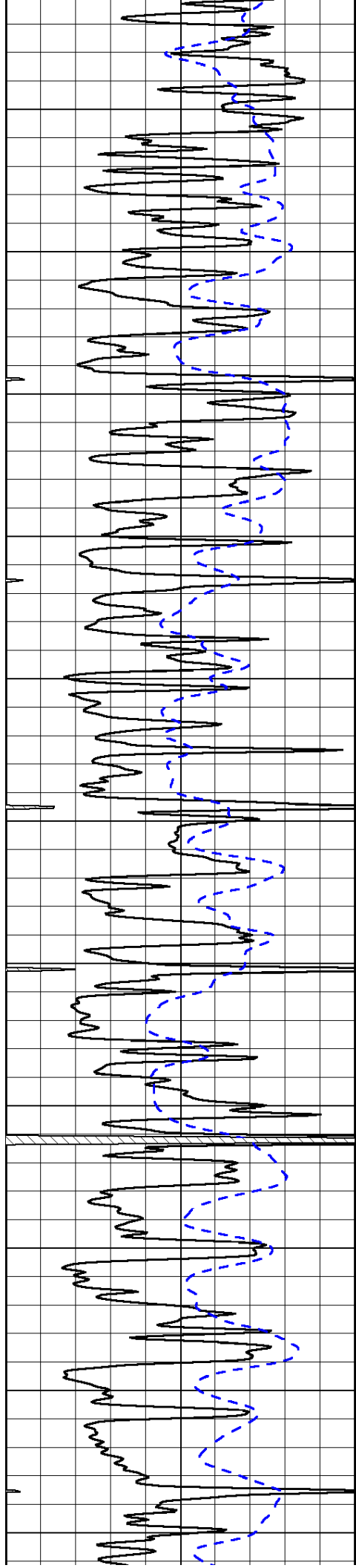


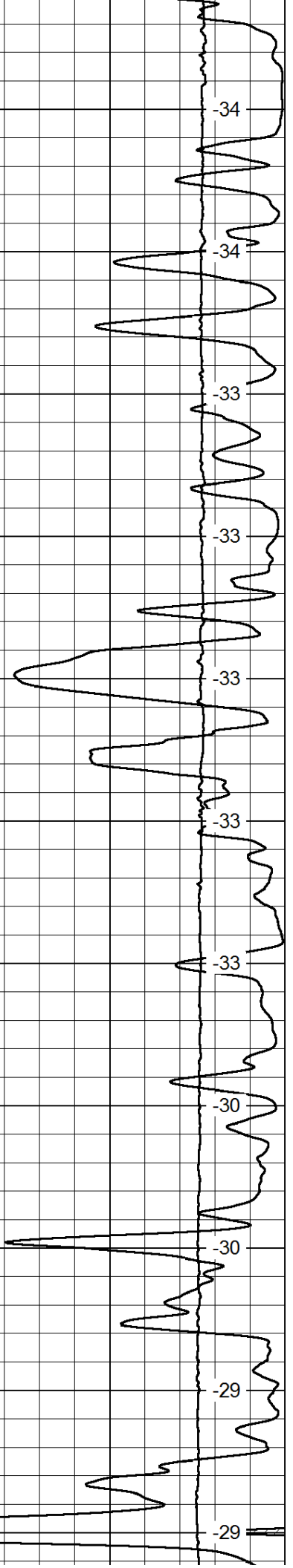
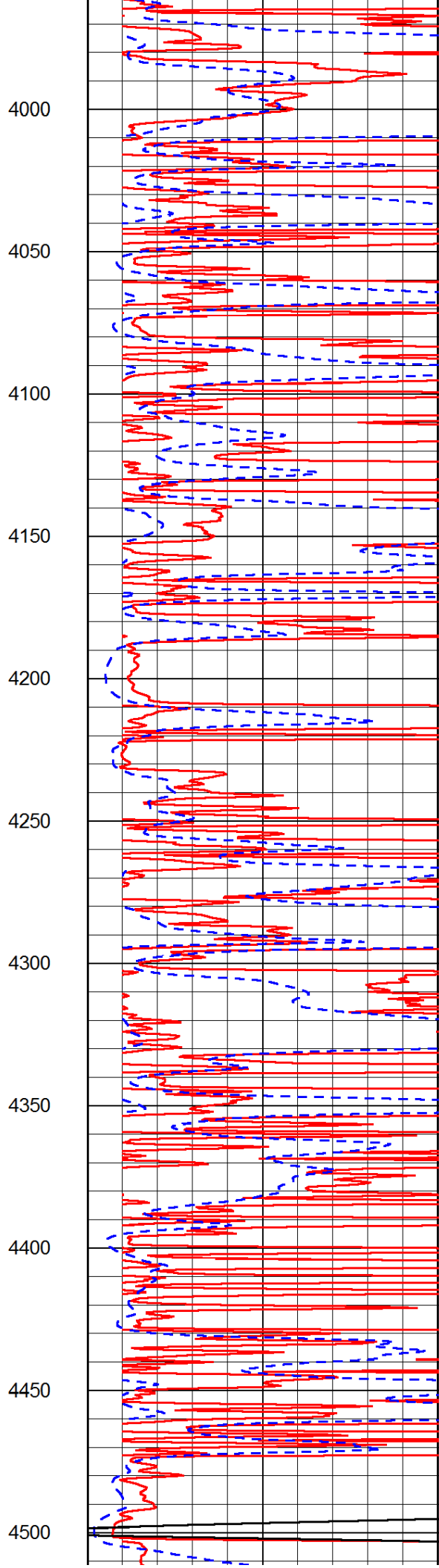
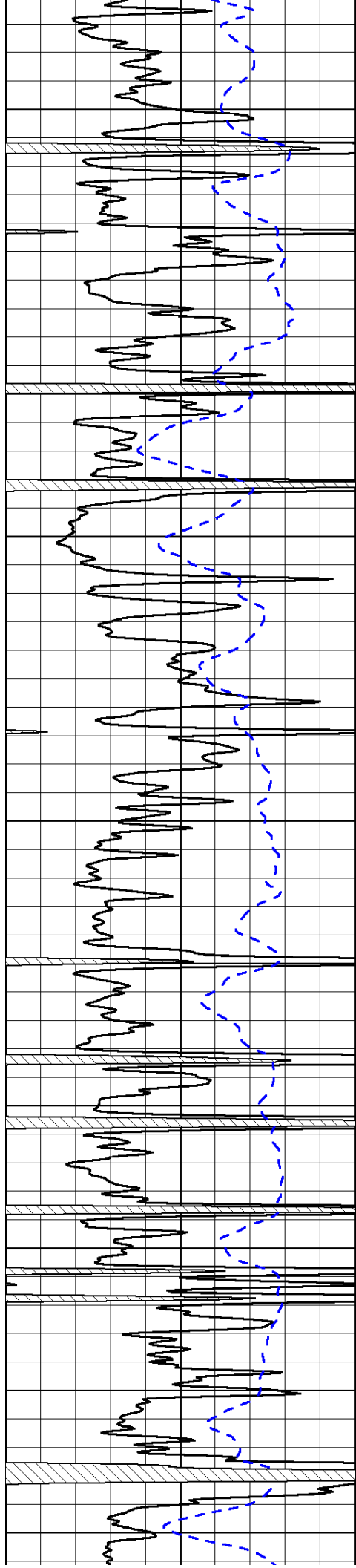


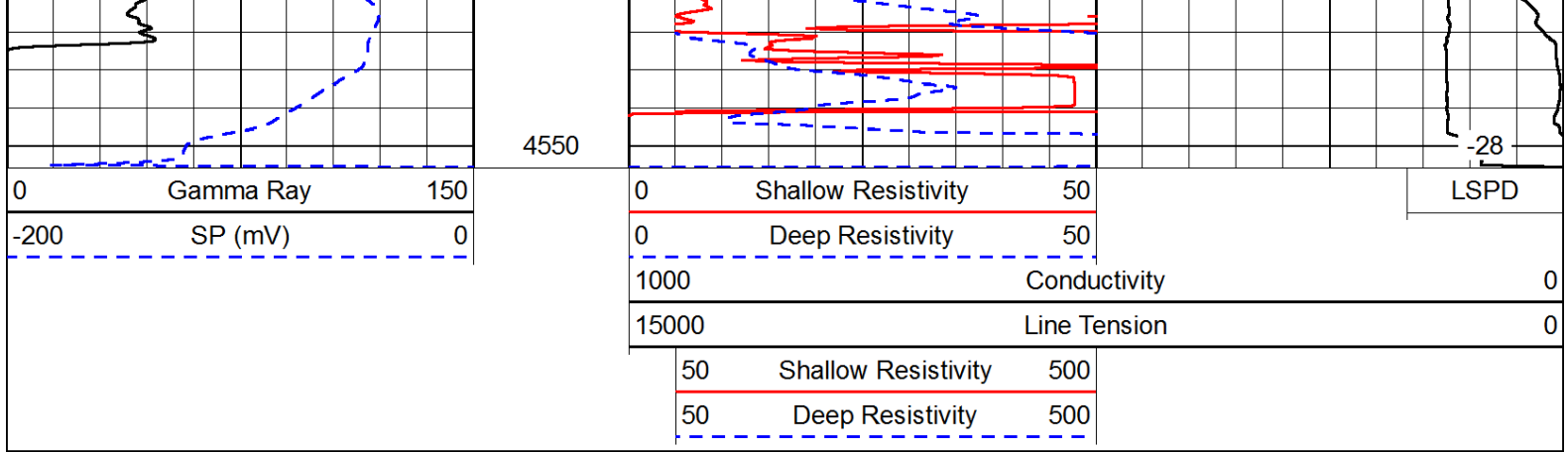




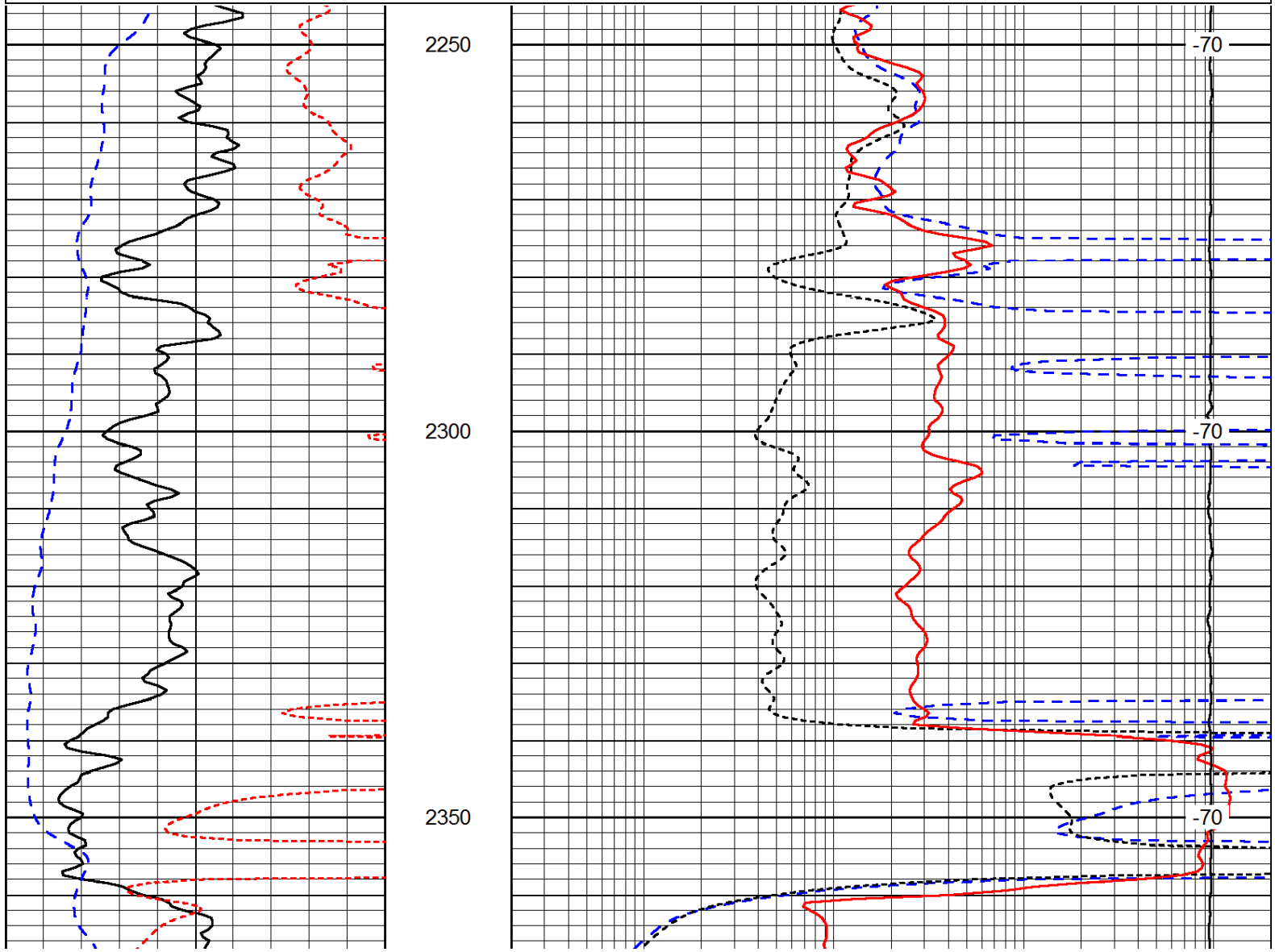
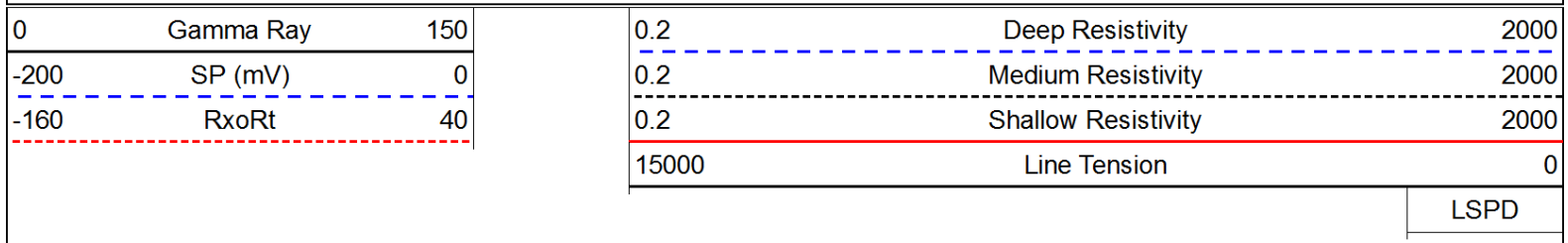


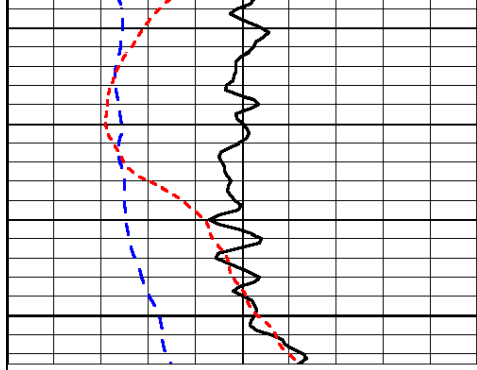






Database File: c:\warrior\data\blake_exp_audrey #1\blake_audrey_1hd.db
 Dataset Pathname: dil/blakstck
 Presentation Format: dil
 Dataset Creation: Tue Nov 13 07:08:11 2012
 Charted by: Depth in Feet scaled 1:240





0	Gamma Ray	150
-200	SP (mV)	0
-160	RxoRt	40



0.2	Deep Resistivity	2000
0.2	Medium Resistivity	2000
0.2	Shallow Resistivity	2000
15000	Line Tension	0

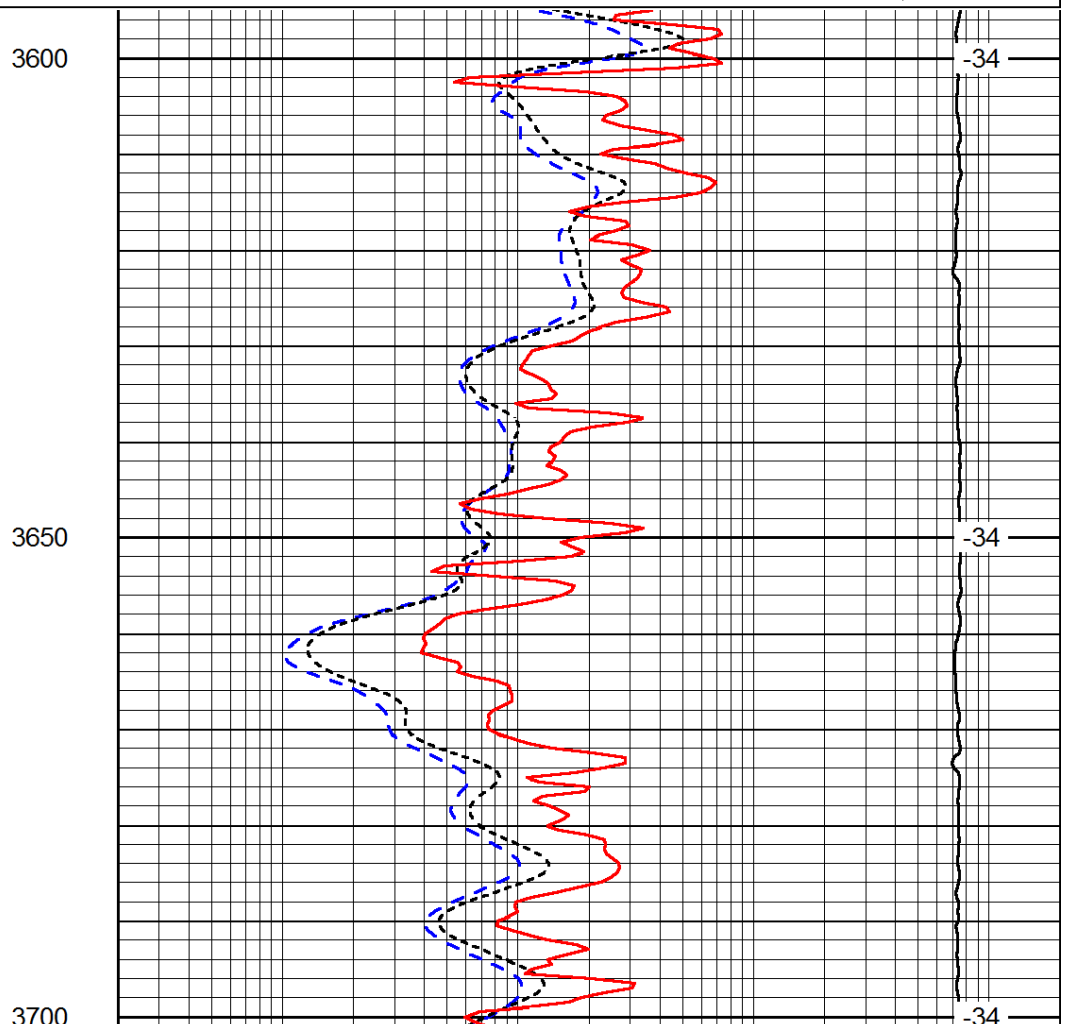
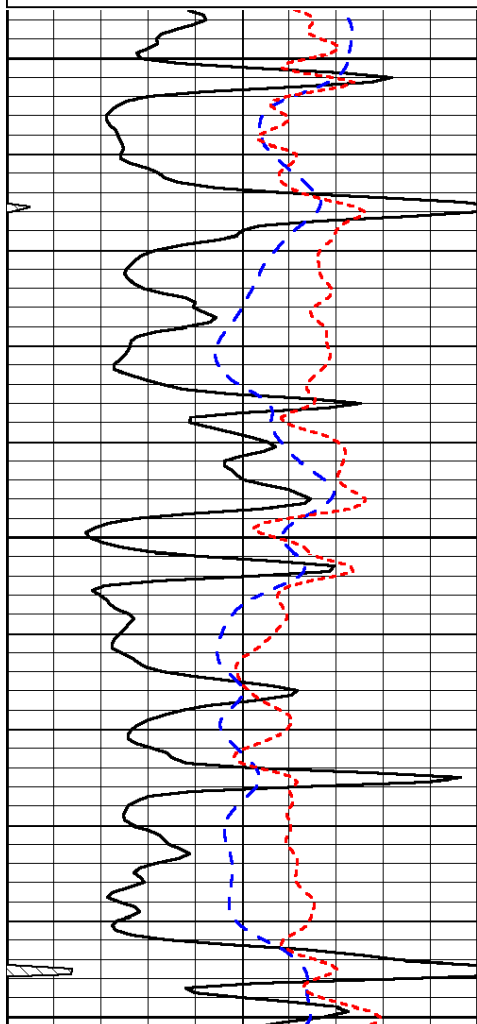
LSPD

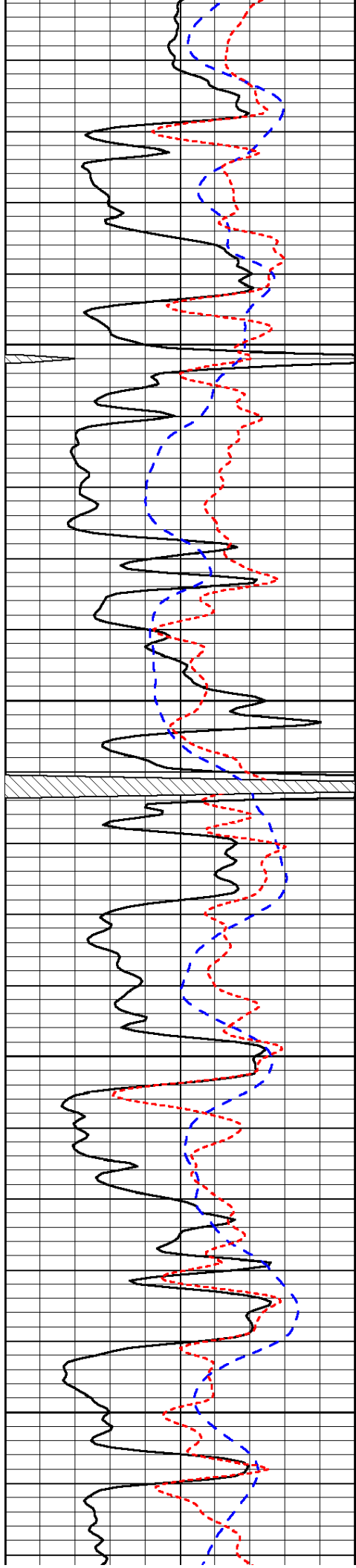
Database File: c:\warrior\data\blake exp_audrey #1\blake_audrey_1hd.db
 Dataset Pathname: dil/blakstck
 Presentation Format: dil
 Dataset Creation: Tue Nov 13 07:08:11 2012
 Charted by: Depth in Feet scaled 1:240

0	Gamma Ray	150
-200	SP (mV)	0
-160	RxoRt	40

0.2	Deep Resistivity	2000
0.2	Medium Resistivity	2000
0.2	Shallow Resistivity	2000
15000	Line Tension	0

LSPD



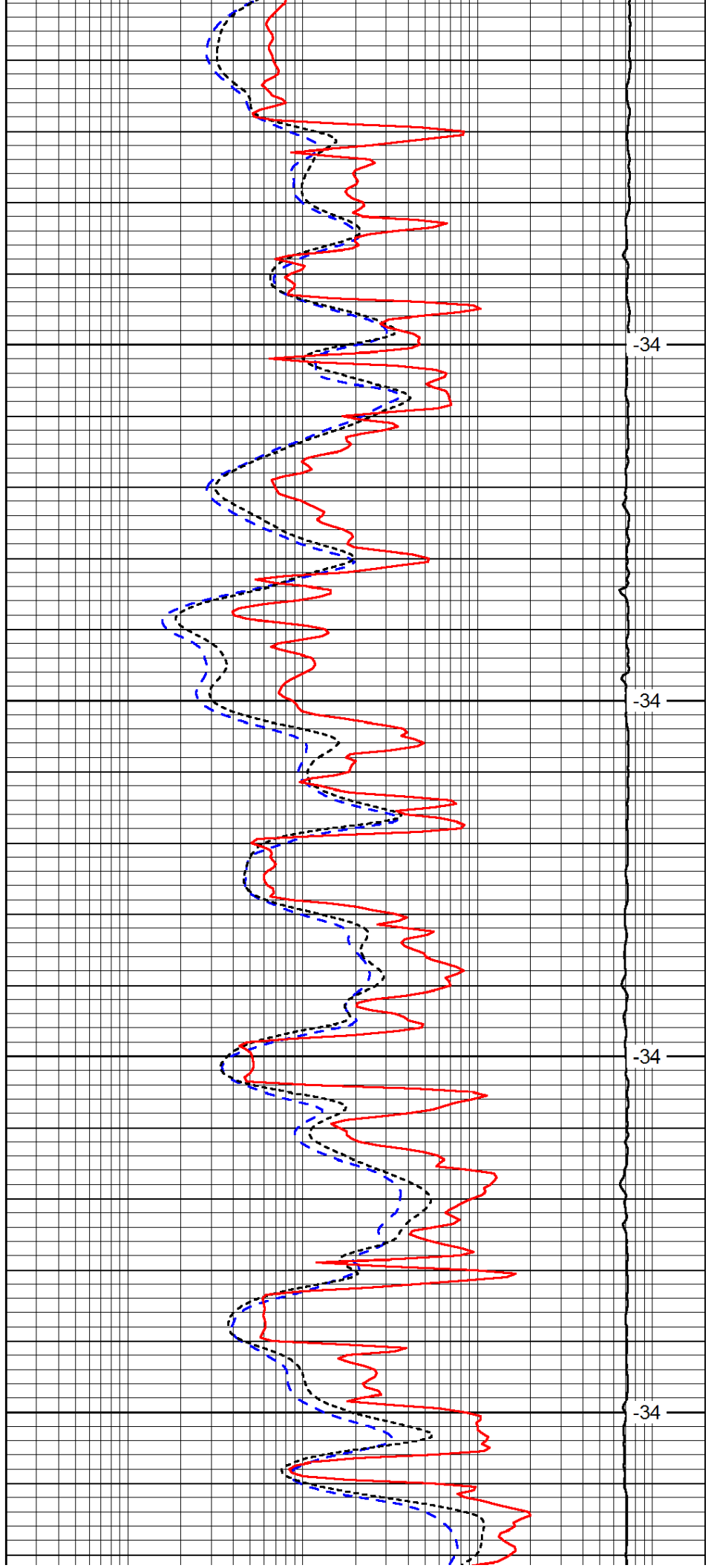


3750

3800

3850

3900

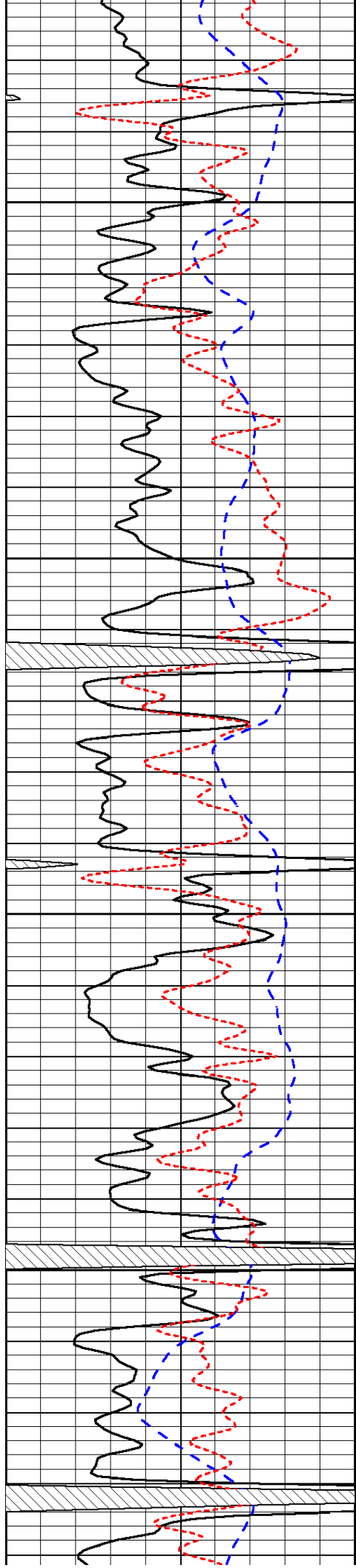


-34

-34

-34

-34

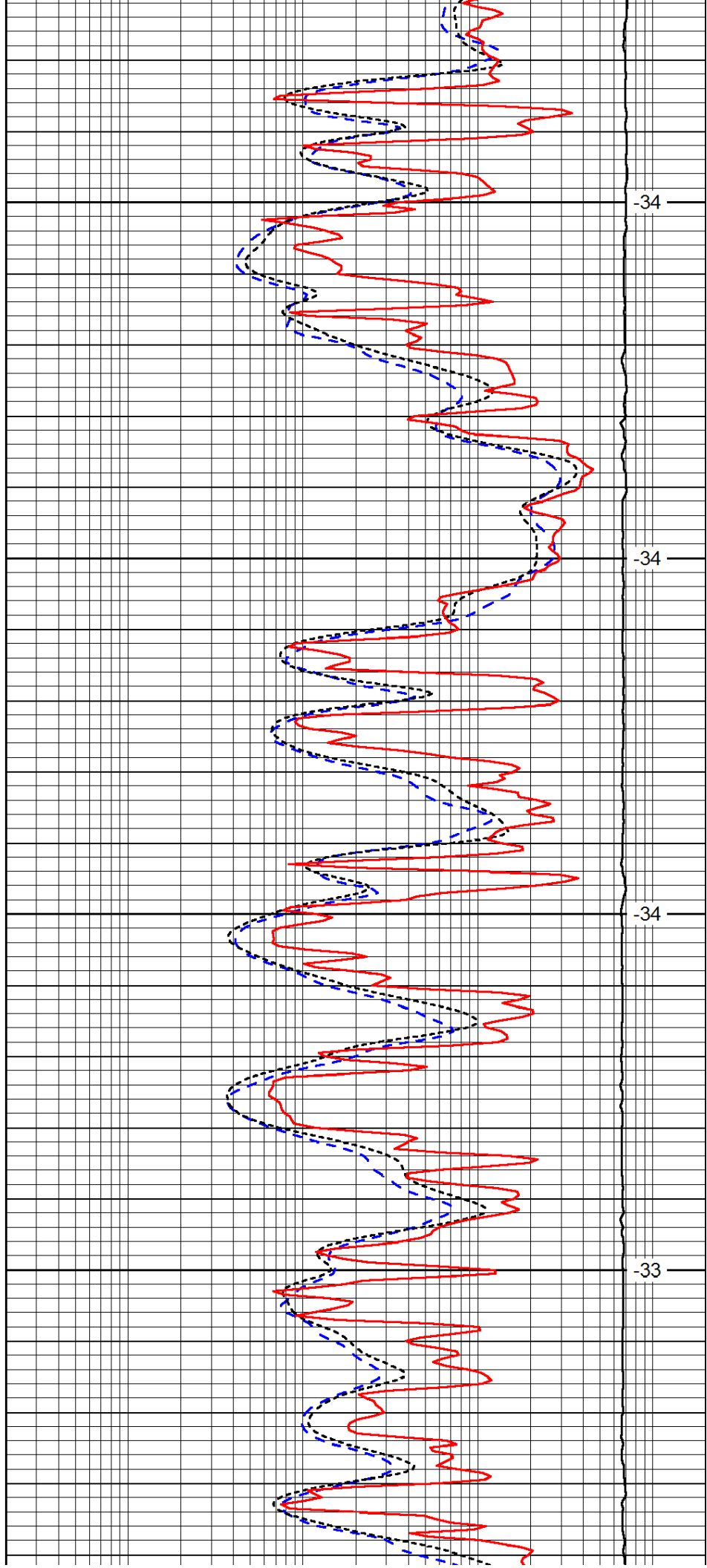


3950

4000

4050

4100

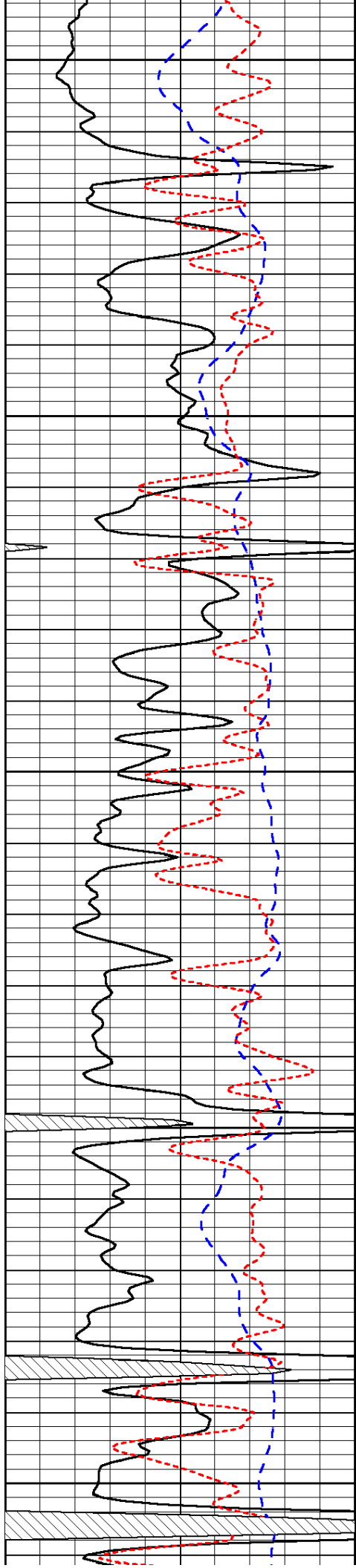


-34

-34

-34

-33



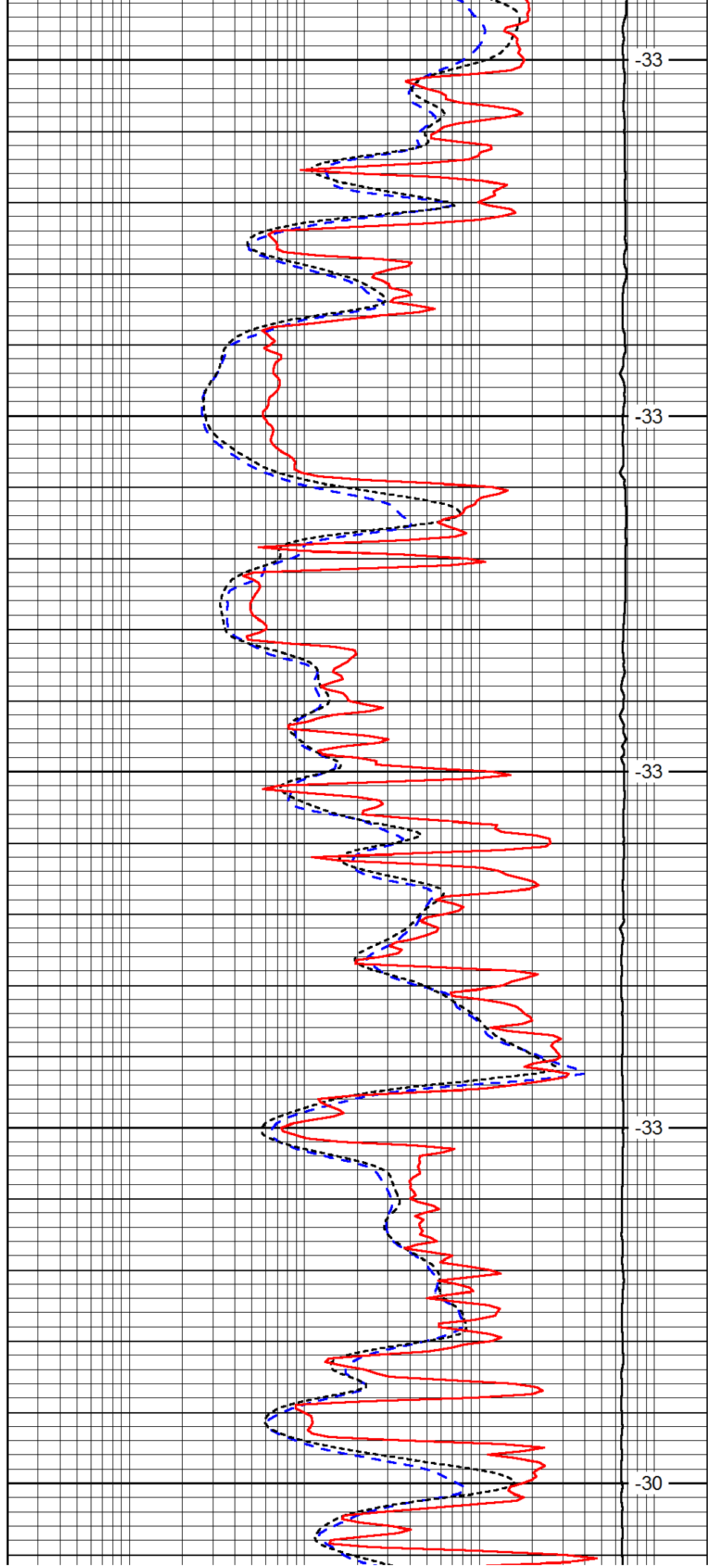
4150

4200

4250

4300

4350



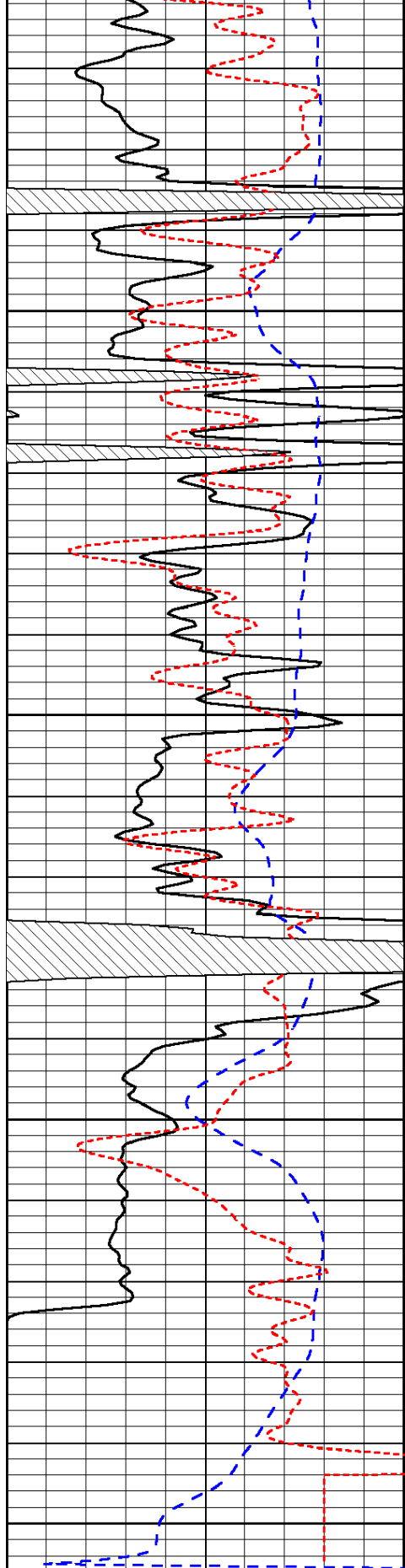
-33

-33

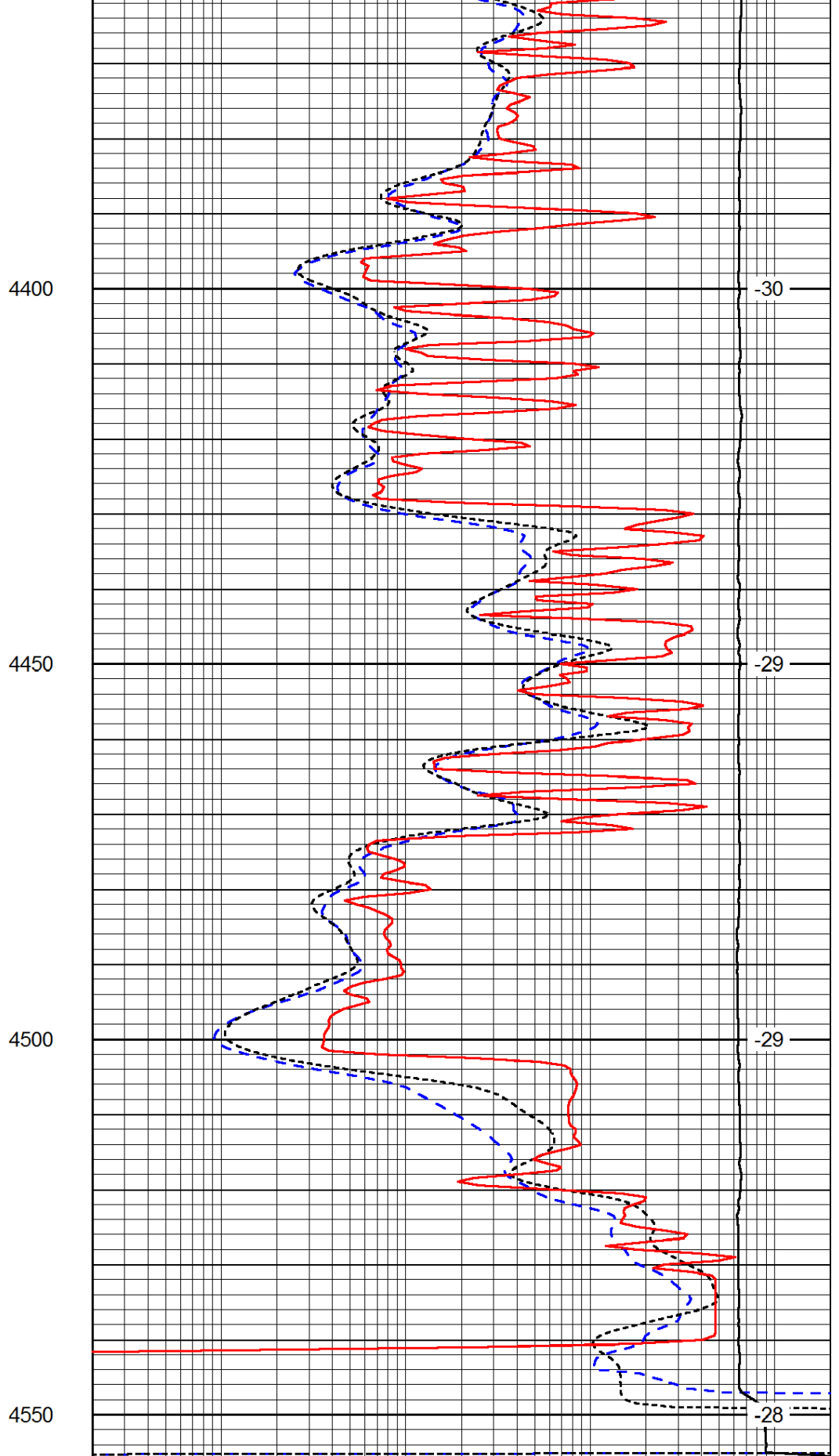
-33

-33

-30



0	Gamma Ray	150
-200	SP (mV)	0
-160	RxoRt	40



0.2	Deep Resistivity	2000
0.2	Medium Resistivity	2000
0.2	Shallow Resistivity	2000
15000	Line Tension	0

LSPD