



Pioneer Energy Services

Microresistivity Log

15-109-21,138-00-00

API No.

Company **Blake Exploration, LLC**

Well **Audrey No. 1**

Field

County **Logan**

State

Kansas

Location

NW SE SE SW
400' FSL & 2,100' FWL

Sec: 31 Twp: 13S Rge: 32W

Other Services
CNL/CDL
DIL/BHCS

Permanent Datum Ground Level

Kelly Bushing

Elevation 2864

Log Measured From Kelly Bushing

11 Ft. Above Perm. Datum

K.B. 2875
D.F.
G.L. 2864

Drilling Measured From Kelly Bushing

11/14/2012

Two

4550

4547

4546

3600

8.625 @ 224

223

7.875

Chemical

8000

9.3 67

11.0 7.2

Flowline

.40 @ 62

.30 @ 62

.54 @ 62

Charts

.20 @ 122

Operating Rig Time

4 1/2 Hours

Max Rec. Temp. F

122

Equipment Number

108

Location

Hays

Recorded By

J. Long

Witnessed By

Michael A. Davignon

<<< Fold Here >>>

All interpretations are opinions based on inferences from electrical or other measurements and we cannot and do not guarantee the accuracy or correctness of any interpretation, and we shall not, except in the case of gross or willful negligence on our part, be liable or responsible for any loss, costs, damages, or expenses incurred or sustained by anyone resulting from any interpretation made by any of our officers, agents or employees. These interpretations are also subject to our general terms and conditions set out in our current Price Schedule.

Comments

Thank you for using Pioneer Energy Services
www.pioneerenergy.com
 785 625 3858

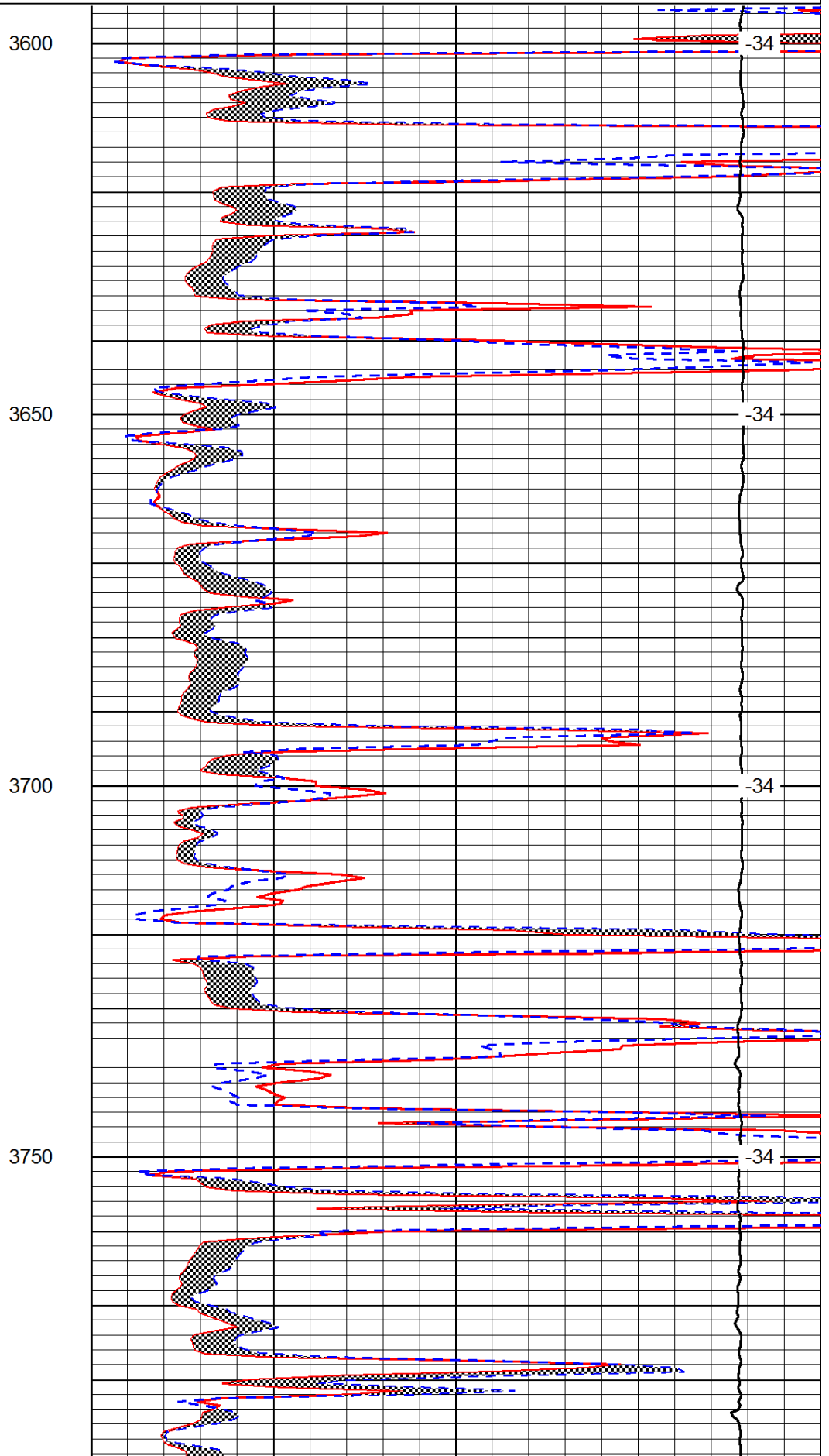
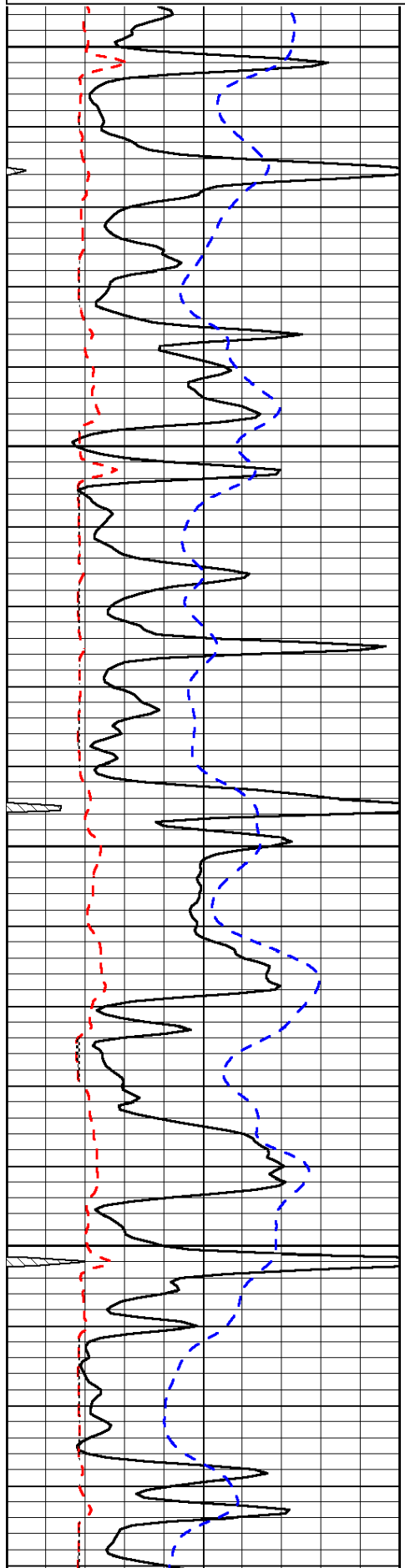
Oakley, 17 South to Mustang Road, 3 1/2 West, North Into

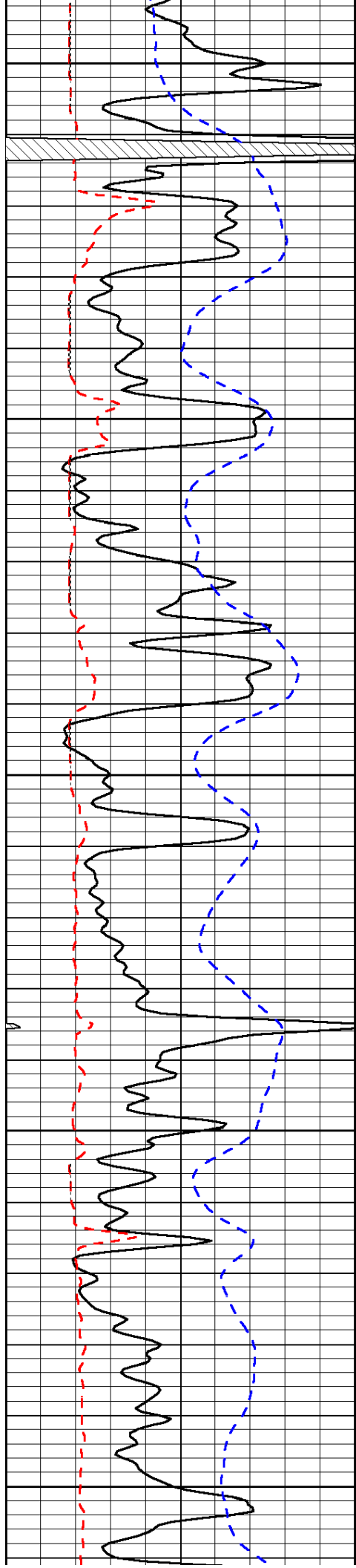
Database File: c:\warrior\data\blake exp_audrey #1\blake_audrey_1hd.db
 Dataset Pathname: dil\blakstck
 Presentation Format: micro
 Dataset Creation: Tue Nov 13 07:08:11 2012
 Charted by: Depth in Feet scaled 1:240

0	Gamma Ray	150
6	Micro Log Caliper (GAPI)	16
-200	SP (mV)	0

0	Micro Inverse 1 X 1	40
0	Micro Normal 2"	40
15000	Line Weight	0

LSPD





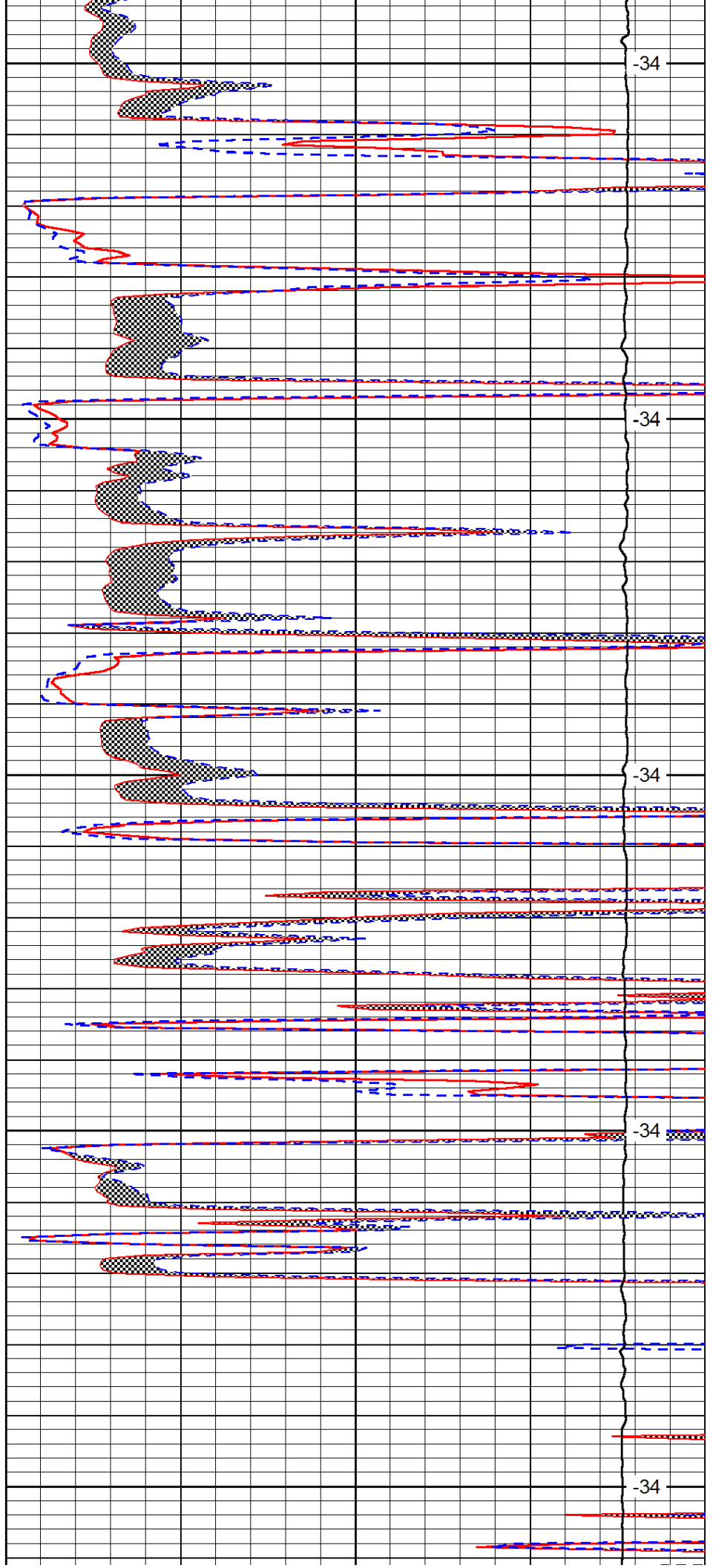
3800

3850

3900

3950

4000



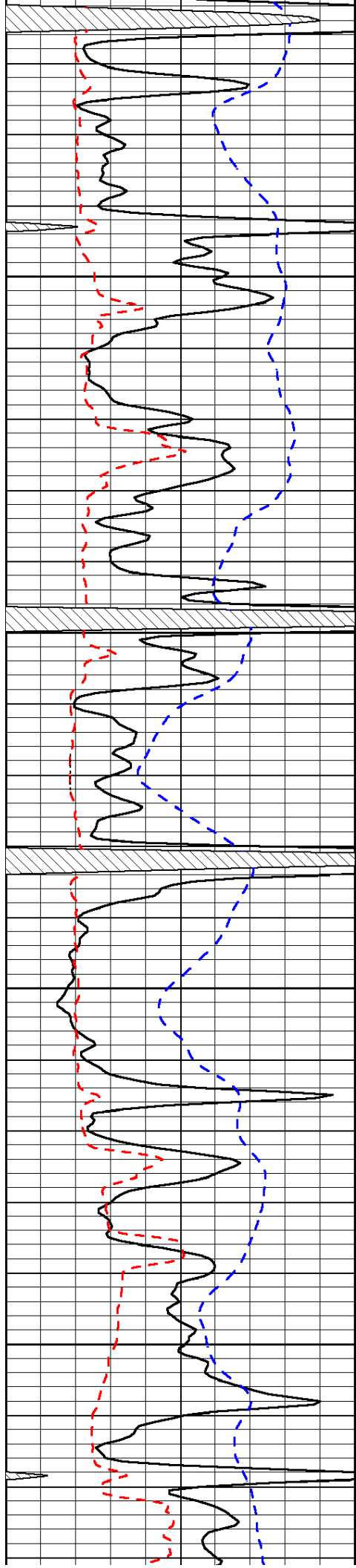
-34

-34

-34

-34

-34

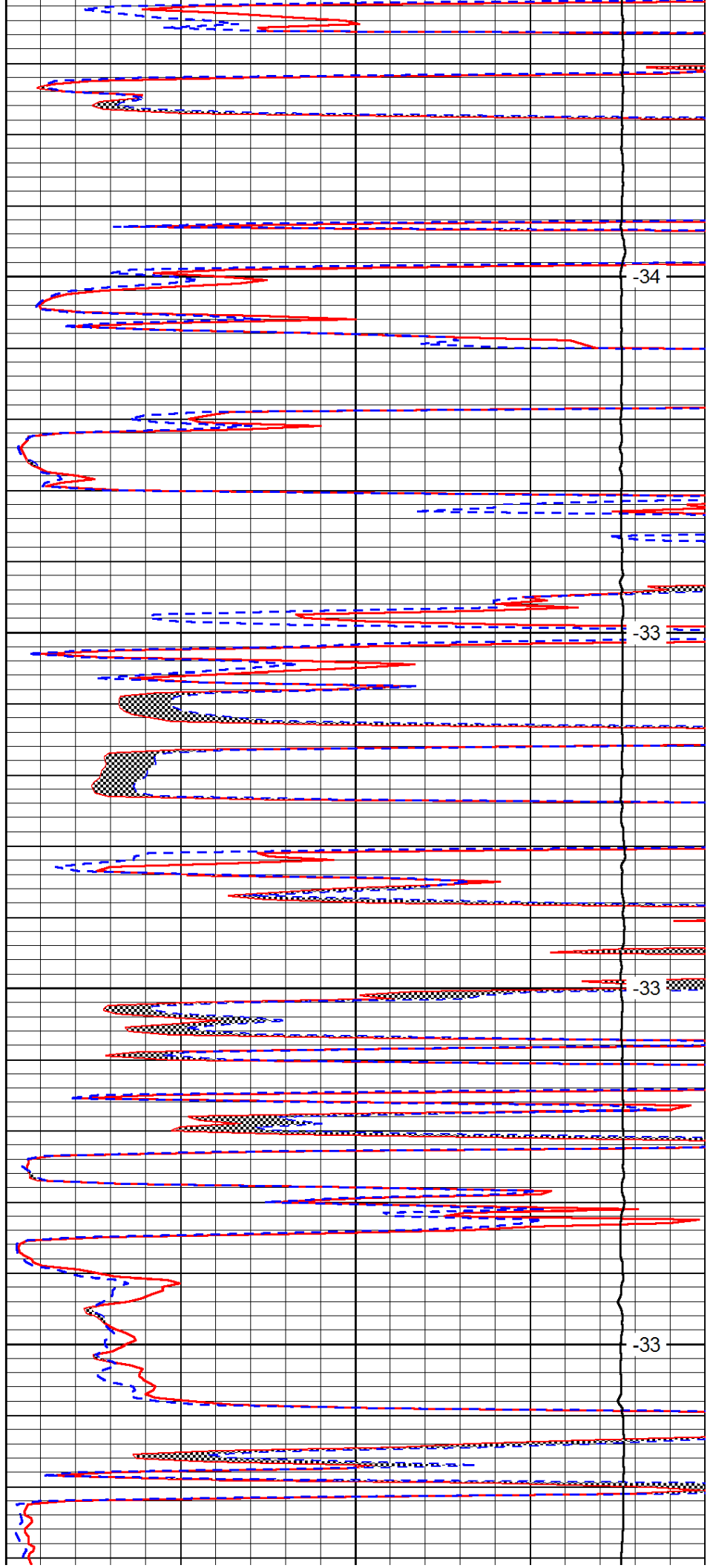


4050

4100

4150

4200

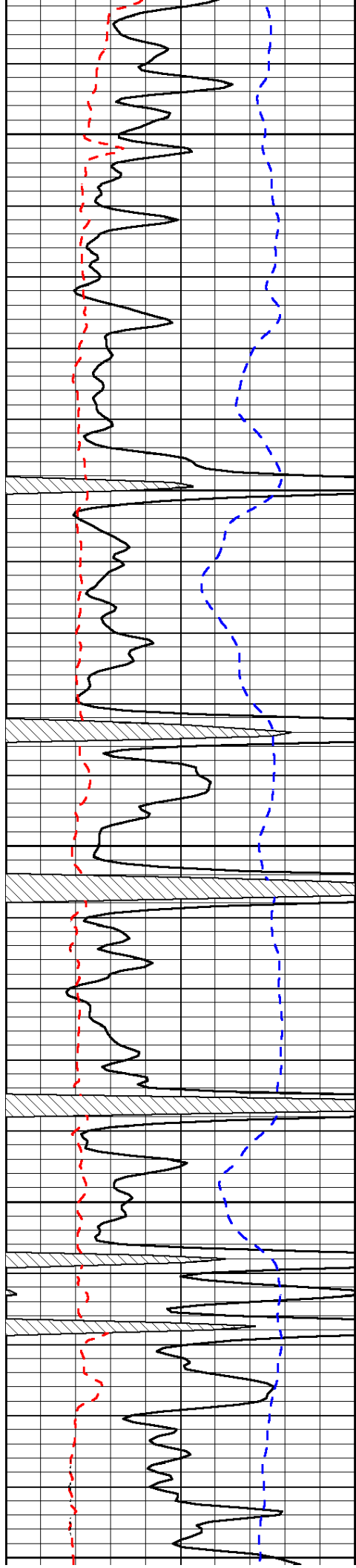


-34

-33

-33

-33



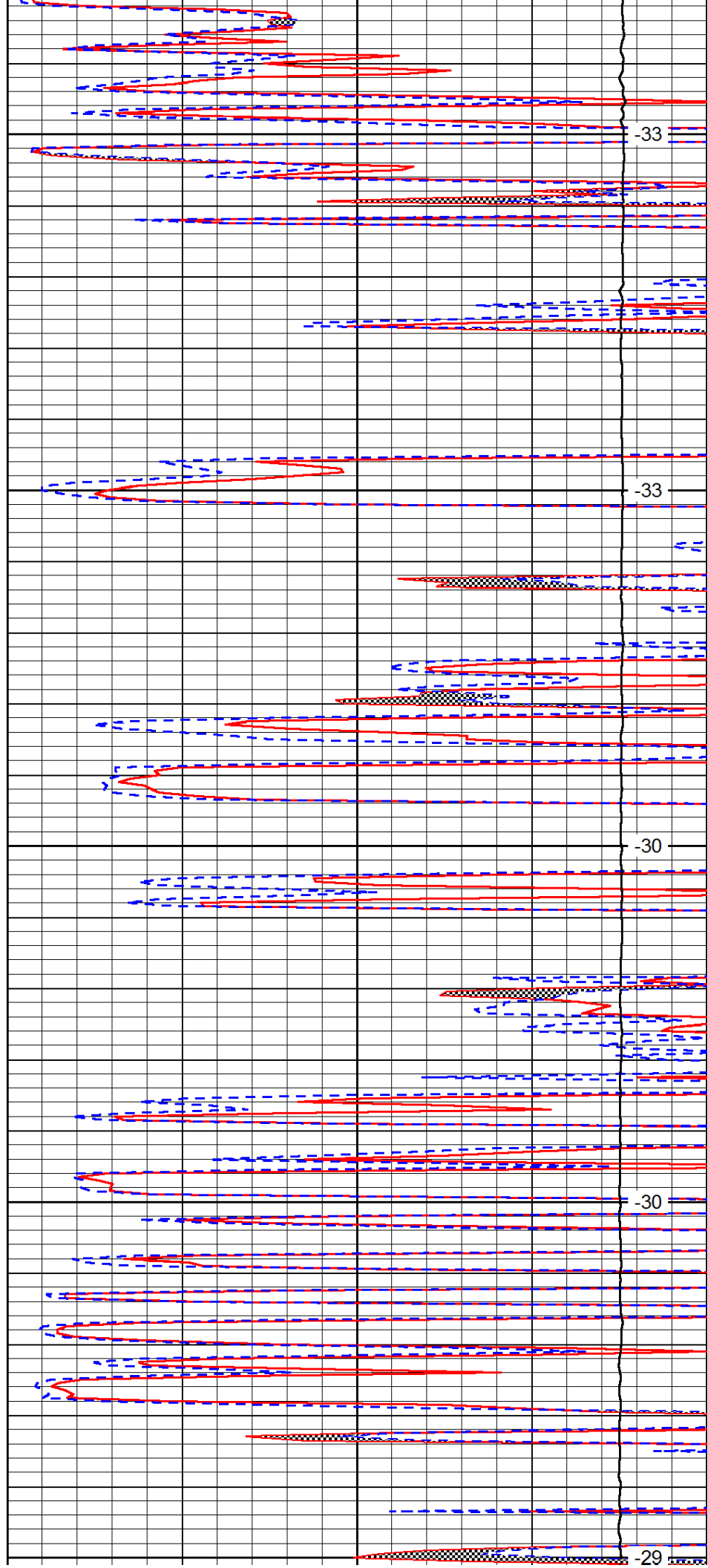
4250

4300

4350

4400

4450



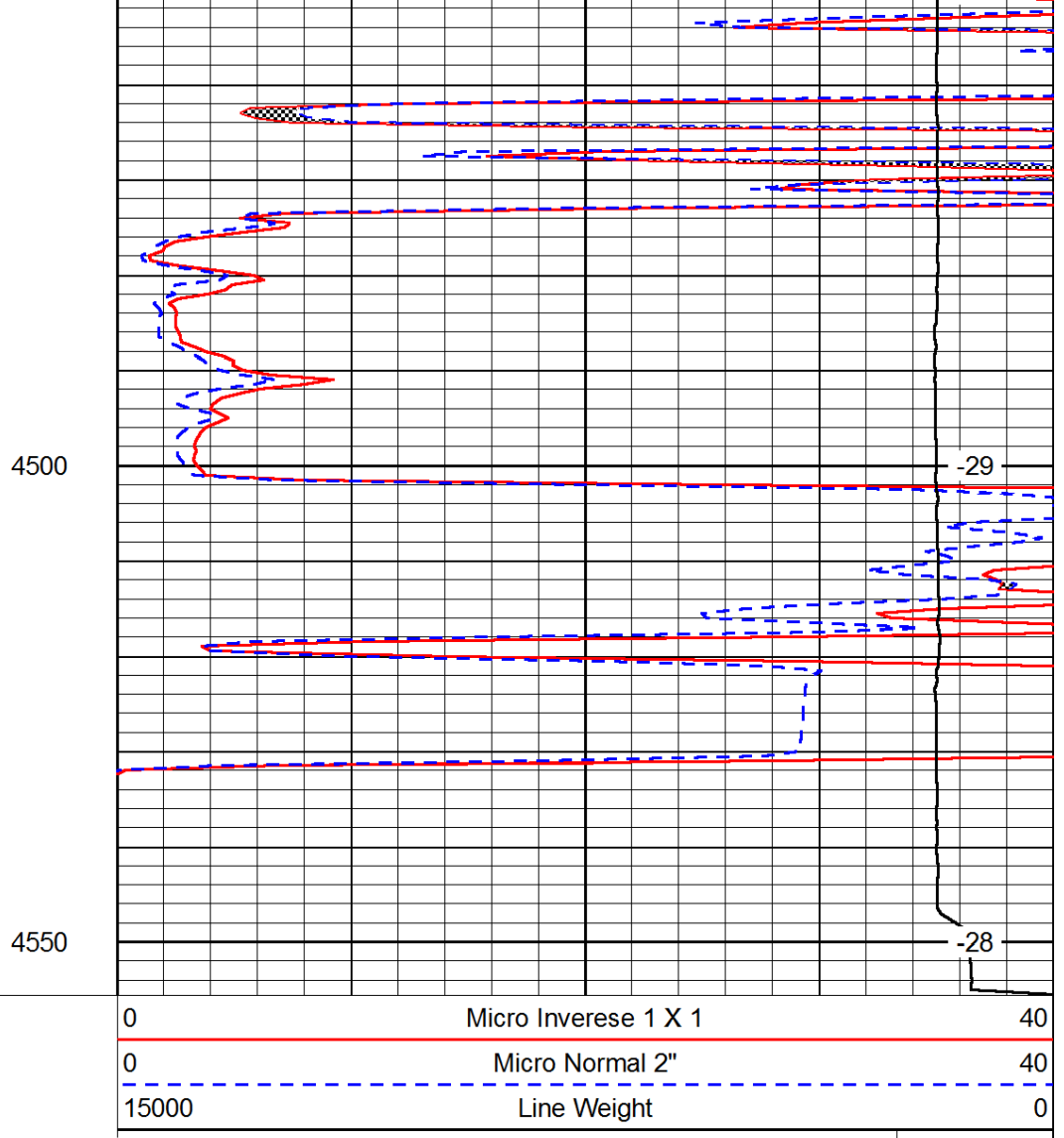
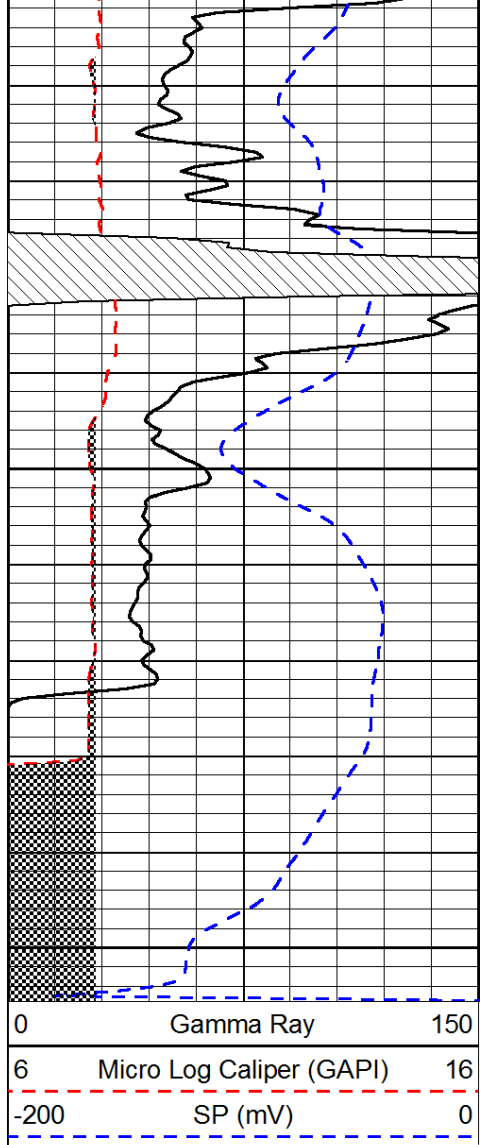
-33

-33

-30

-30

-29



LSPD