



Pioneer Energy Services

Gamma Ray Correlation Log

API No.

15-109-21138-00-00

Company **Blake Exploration, LLC**

Well **Audrey No. 1**

Field

County **Logan**

State **Kansas**

Location

**NW SE SE SW
400' FSL & 2100' FWL**

Other Services
Mast Trailer

Sec: **31** Twp: **13S** Rge: **32W**

Permanent Datum **Ground Level** Elevation **2864**

Log Measured From **Kelly Bushing** 11 Ft. Above Perm. Datum

Drilling Measured From **Kelly Bushing**

Elevation
K.B. 2875
D.F. 2864
G.L. 2864

Date	11/15/2012						
Run Number	One						
Type Log	GRCCCL						
Depth Driller	4550						
Depth Logger	4488						
Bottom Logged Interval	4487						
Top Logged Interval	3600						
Type Fluid In Hole	Water						
Salinity, PPM CL	////						
Density	////						
Level	Full						
Max. Rec. Temp. F	121						
Operating Rig Time	2 Hours						
Equipment -- Location	18 Hays						
Recorded By	David Walker						
Witnessed By	Mike Davignon						
Borehole Record			Casing Record				
Run No.	Bit	From	To	Size	Wgt.	From	To
				5.5	15.5	0	T.D.

<<< Fold Here >>>

All interpretations are opinions based on inferences from electrical or other measurements and we cannot and do not guarantee the accuracy or correctness of any interpretation, and we shall not, except in the case of gross or willful negligence on our part, be liable or responsible for any loss, costs, damages, or expenses incurred or sustained by anyone resulting from any interpretation made by any of our officers, agents or employees. These interpretations are also subject to our general terms and conditions set out in our current Price Schedule.

Comments

Thank you for using Pioneer Energy Services
785.625.3858

Oakley, 17 South to Mustang Road, 3 1/2 West, North Into

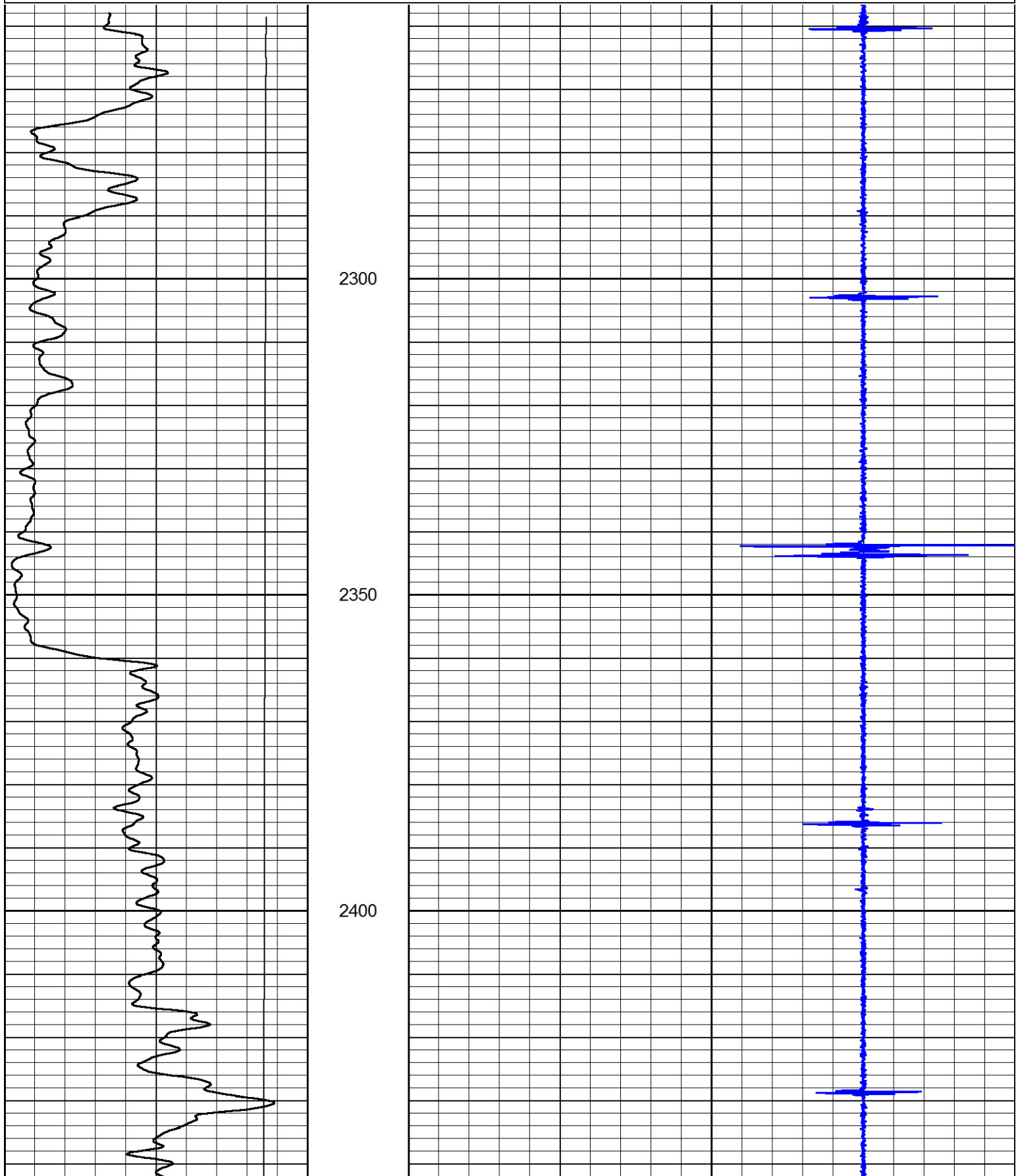


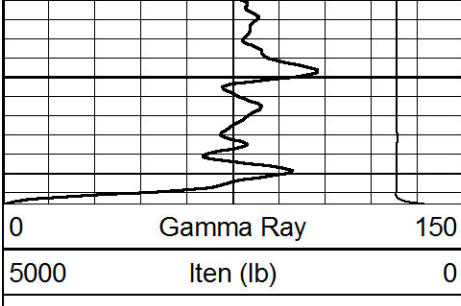
Port Collar@2342

Database File: blake-exploration-audrey-no-1.db
Dataset Pathname: pass6
Presentation Format: gr-ccl
Dataset Creation: Thu Nov 15 14:13:26 2012 by Log SCH 120126
Charted by: Depth in Feet scaled 1:240

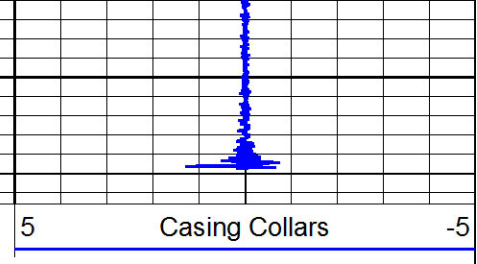
0	Gamma Ray	150
5000	Iten (lb)	0

5	Casing Collars	-5
---	----------------	----



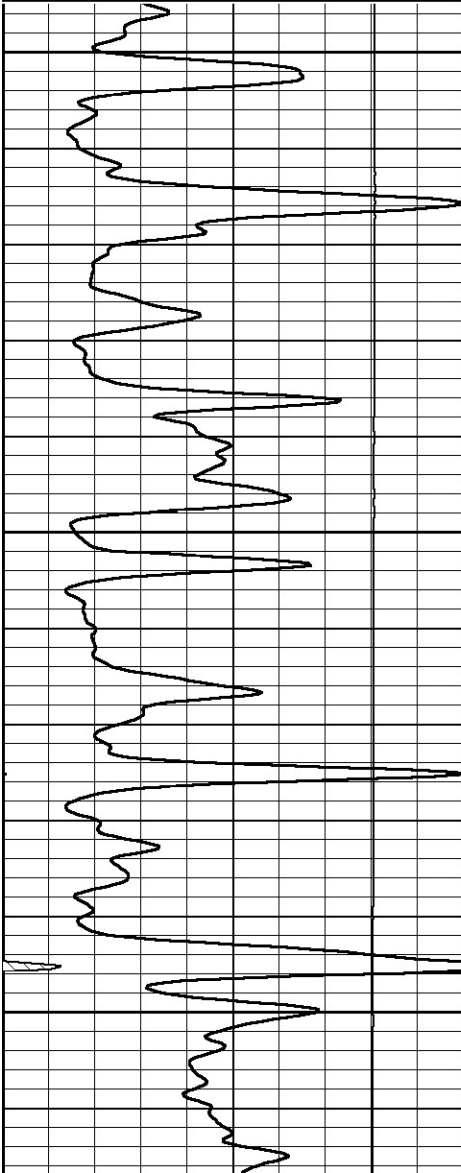
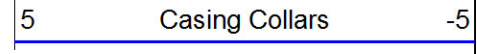
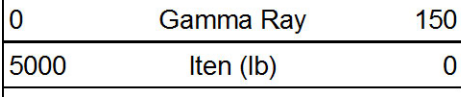


2450



Main Pass

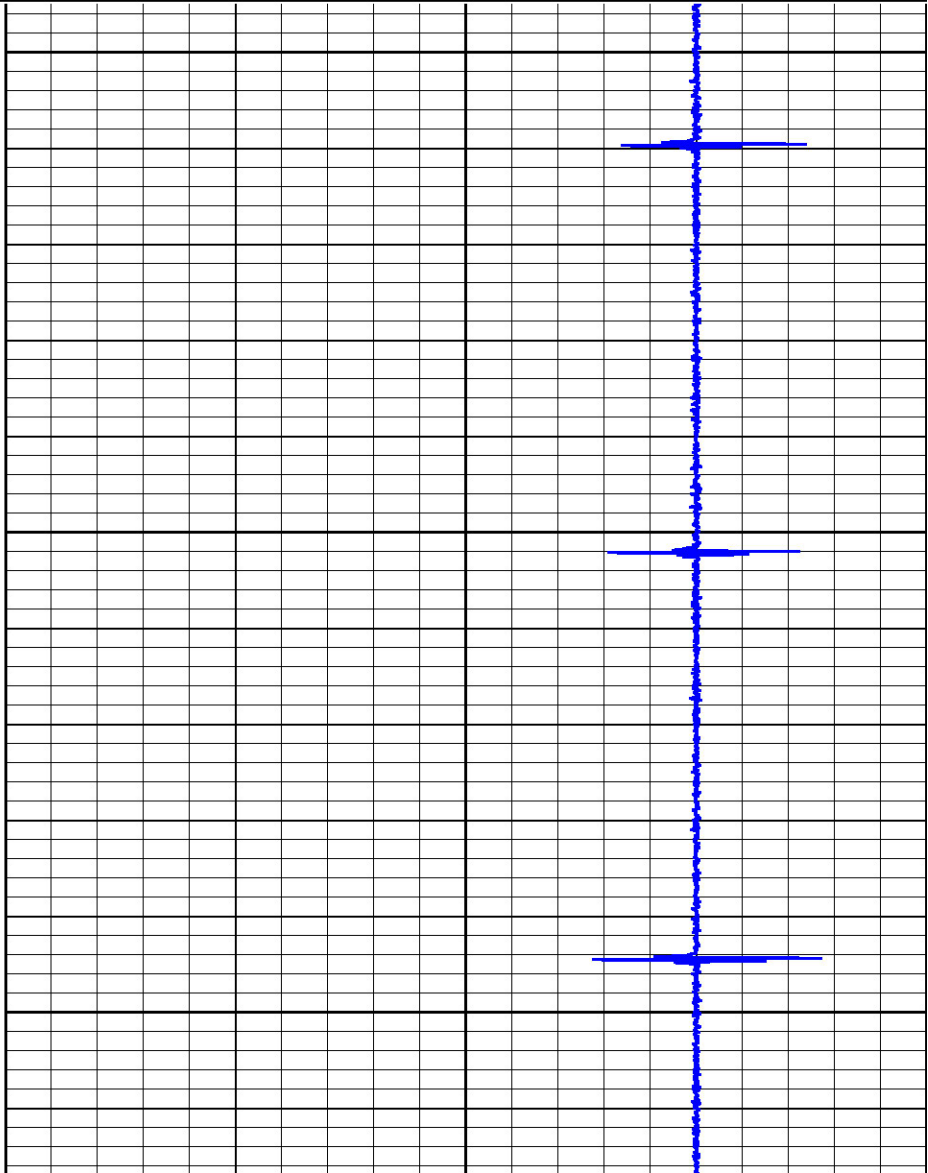
Database File: blake-exploration-audrey-no-1.db
 Dataset Pathname: pass5.1
 Presentation Format: gr-ccl
 Dataset Creation: Thu Nov 15 14:31:05 2012
 Charted by: Depth in Feet scaled 1:240

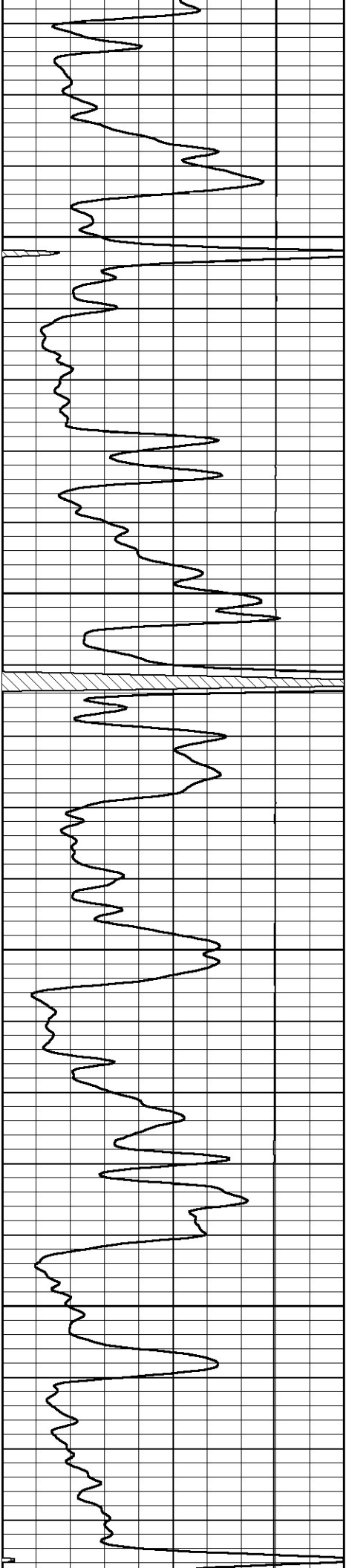


3600

3650

3700





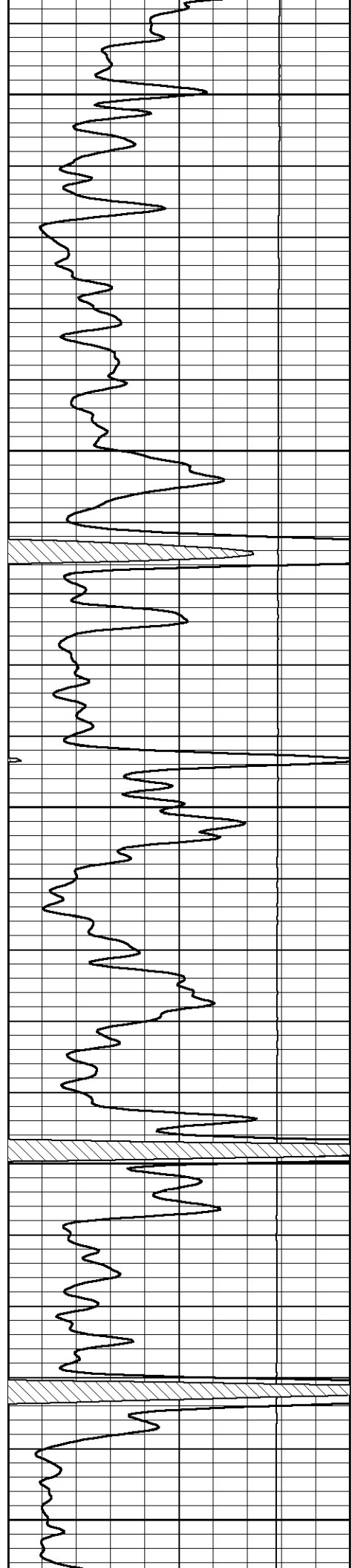
3750

3800

3850

3900





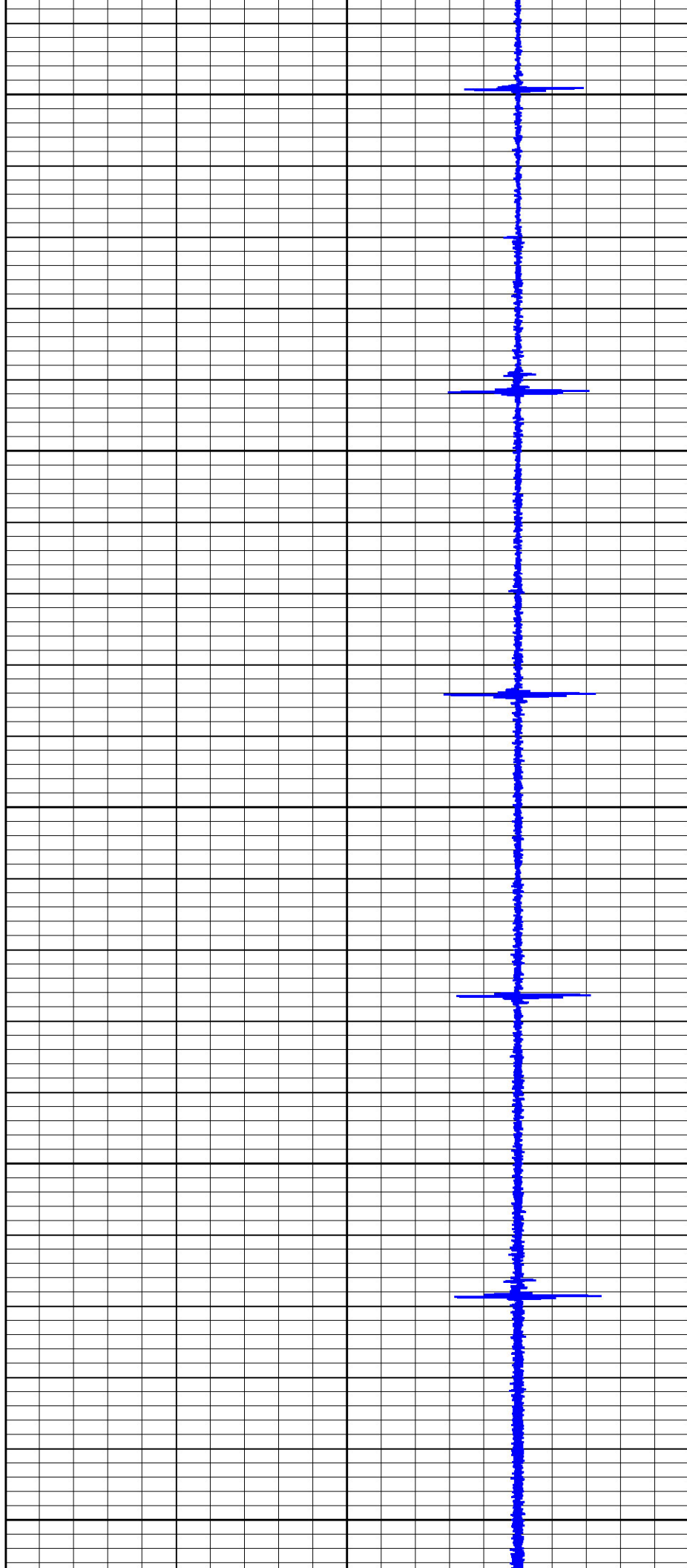
3950

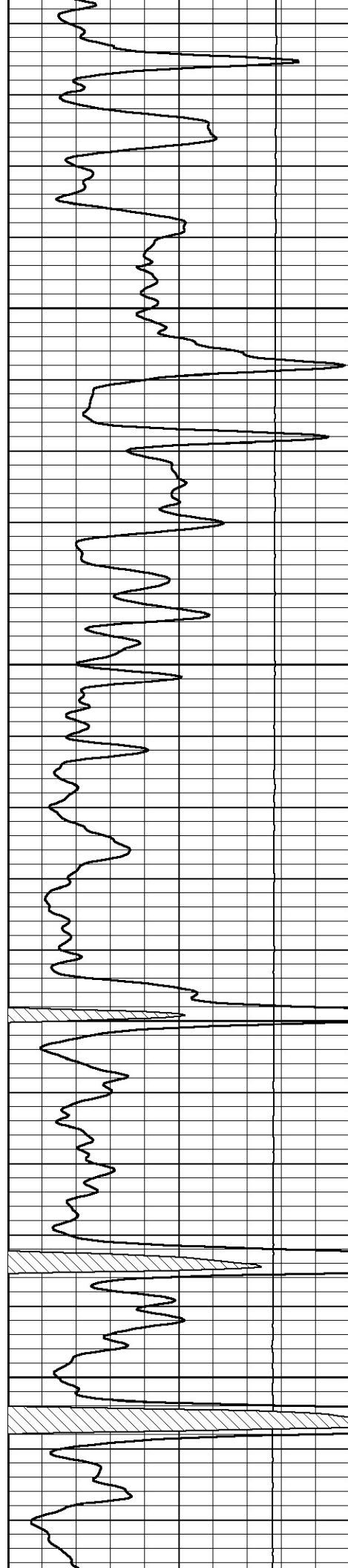
4000

4050

4100

4150



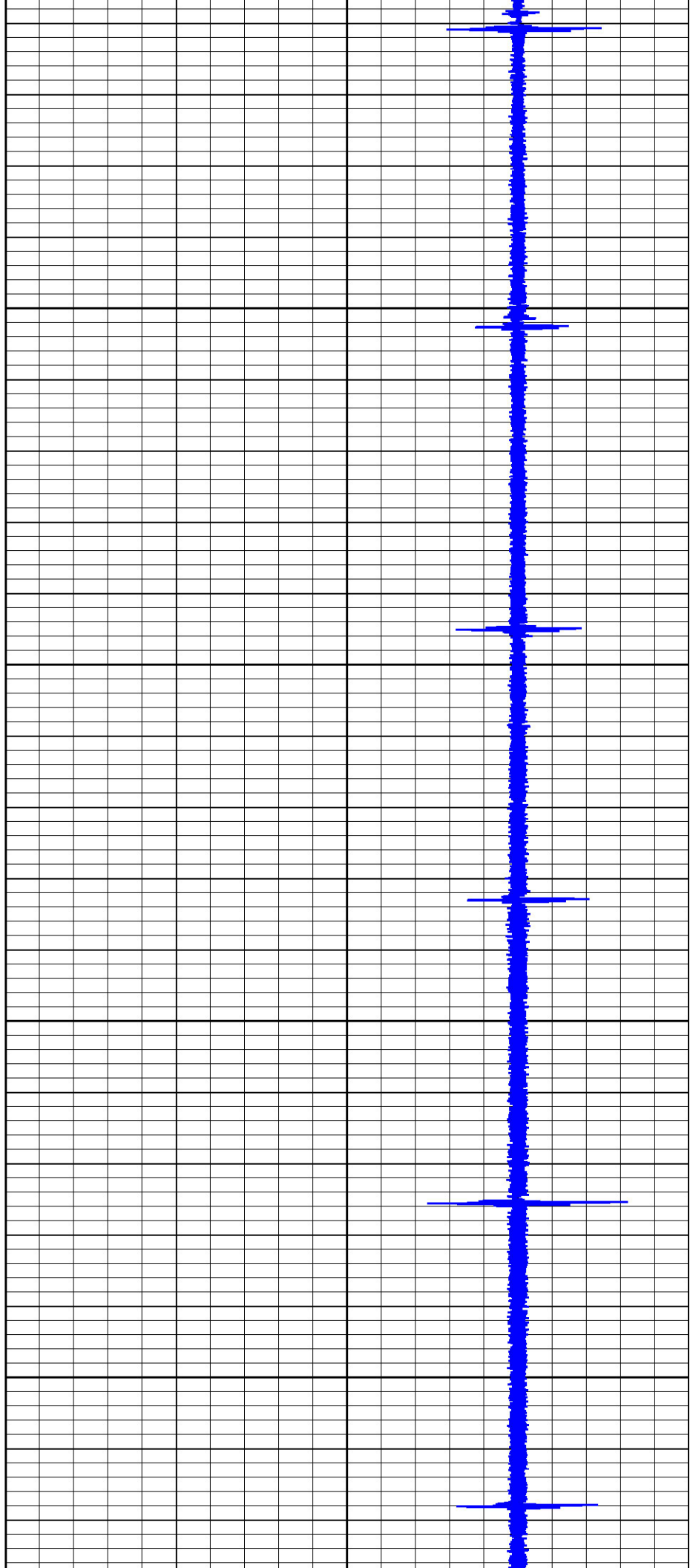


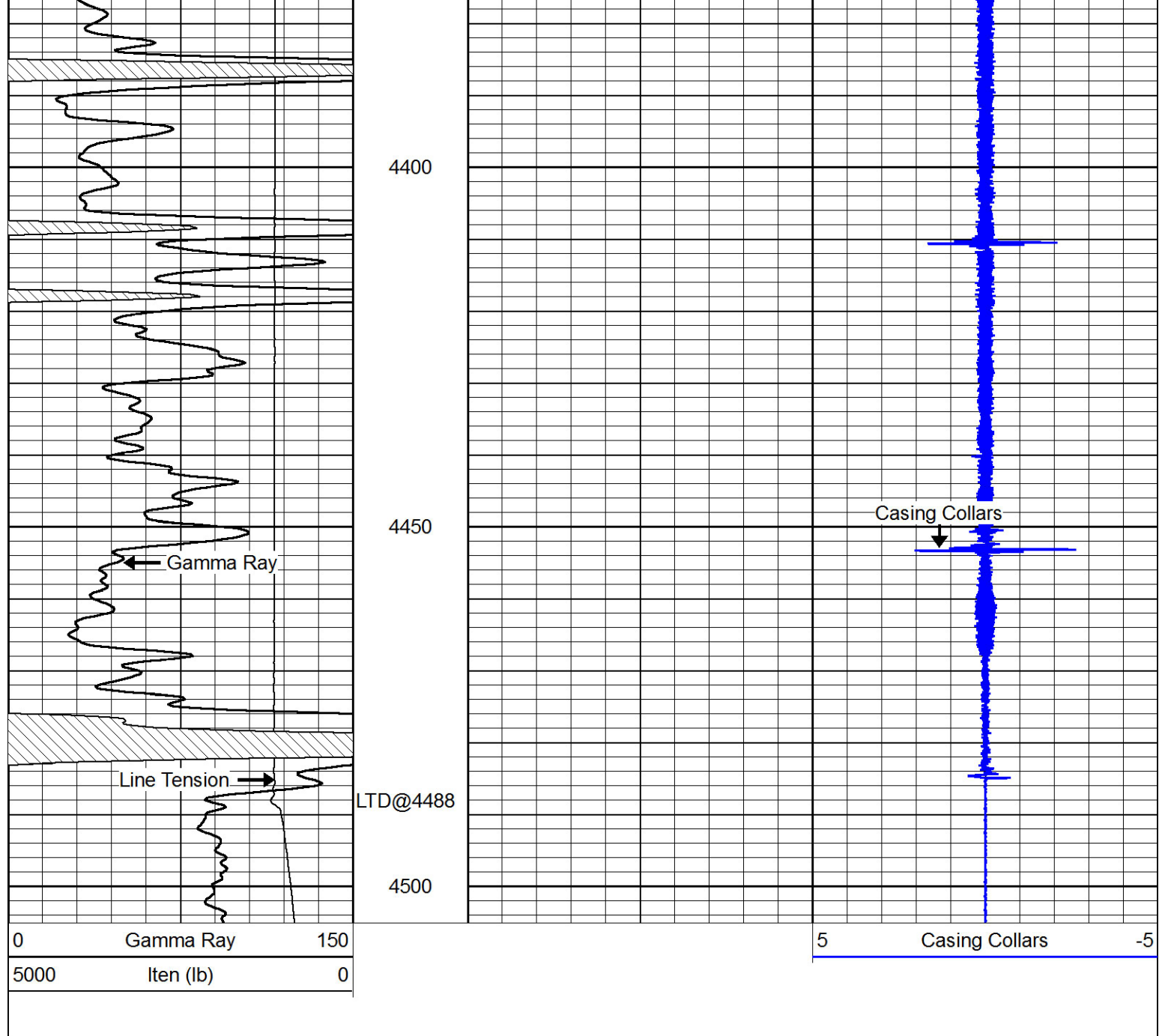
4200

4250

4300

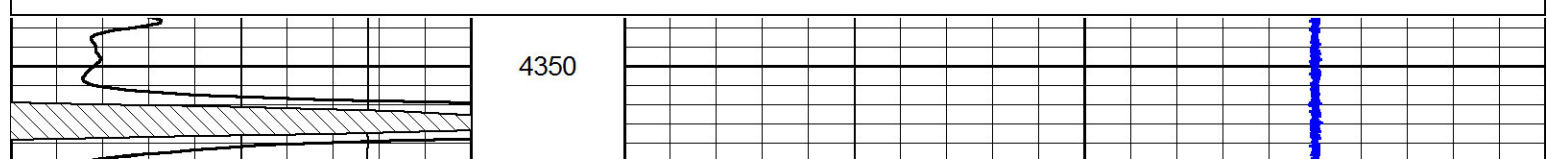
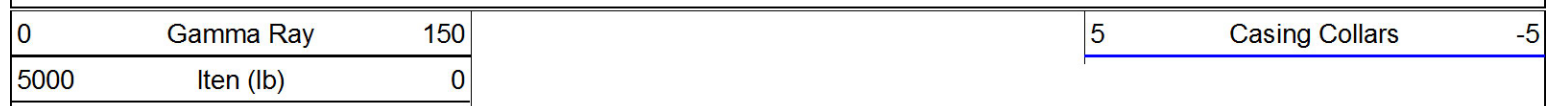
4350

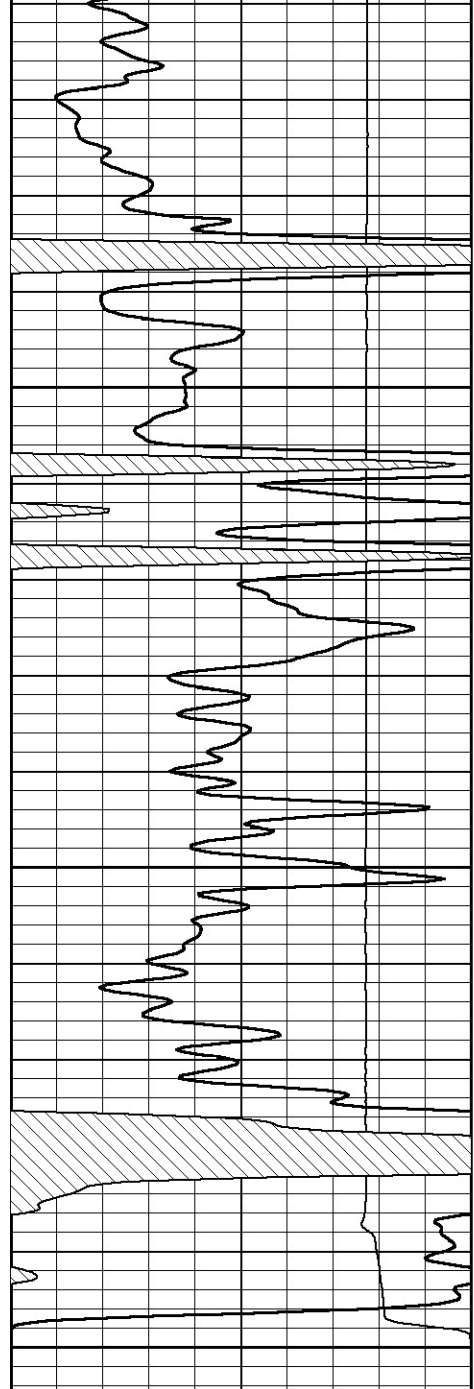




Repeat Section

Database File: blake-exploration-audrey-no-1.db
 Dataset Pathname: pass4
 Presentation Format: gr-ccl
 Dataset Creation: Thu Nov 15 13:45:04 2012 by Log SCH 120126
 Charted by: Depth in Feet scaled 1:240



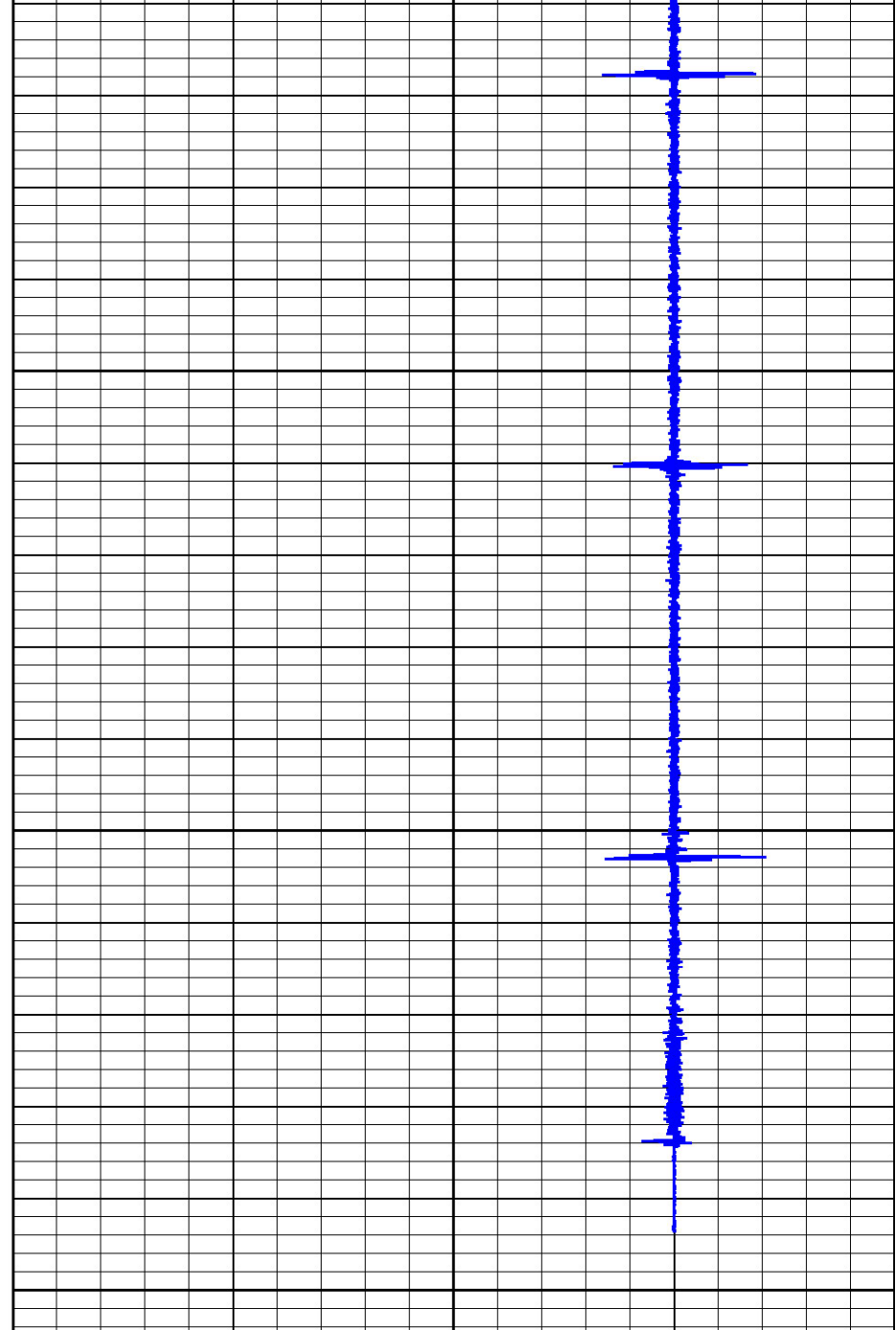


4400

4450

4500

0 Gamma Ray 150
5000 Iten (lb) 0



5 Casing Collars -5