



CHANUTE, KANSAS

**GAMMA RAY
NEUTRON
COMPLETION LOG**

Company: VIVA INTERNATIONAL, INC.
Well: GLADES #V-24
Field: VERNON
County: WOODSON
State: KANSAS

Location: SEC 9 TWP 24S RGE 16E
1155 FSL & 5115 FEL
NW1/4NW-SW1/4SW
API #: 15-207-28164-00-00
Other Services

Company: VIVA INTERNATIONAL, INC.
Well: GLADES #V-24
Field: VERNON
County: WOODSON
State: KANSAS

Location: SEC 9 TWP 24S RGE 16E
1155 FSL & 5115 FEL
NW1/4NW-SW1/4SW
API #: 15-207-28164-00-00
Other Services

Company: VIVA INTERNATIONAL, INC.
Well: GLADES #V-24
Field: VERNON
County: WOODSON
State: KANSAS

Location: SEC 9 TWP 24S RGE 16E
1155 FSL & 5115 FEL
NW1/4NW-SW1/4SW
API #: 15-207-28164-00-00
Other Services

Company: VIVA INTERNATIONAL, INC.
Well: GLADES #V-24
Field: VERNON
County: WOODSON
State: KANSAS

Location: SEC 9 TWP 24S RGE 16E
1155 FSL & 5115 FEL
NW1/4NW-SW1/4SW
API #: 15-207-28164-00-00
Other Services

Company: VIVA INTERNATIONAL, INC.
Well: GLADES #V-24
Field: VERNON
County: WOODSON
State: KANSAS

Location: SEC 9 TWP 24S RGE 16E
1155 FSL & 5115 FEL
NW1/4NW-SW1/4SW
API #: 15-207-28164-00-00
Other Services

Company: VIVA INTERNATIONAL, INC.
Well: GLADES #V-24
Field: VERNON
County: WOODSON
State: KANSAS

Location: SEC 9 TWP 24S RGE 16E
1155 FSL & 5115 FEL
NW1/4NW-SW1/4SW
API #: 15-207-28164-00-00
Other Services

Company: VIVA INTERNATIONAL, INC.
Well: GLADES #V-24
Field: VERNON
County: WOODSON
State: KANSAS

Location: SEC 9 TWP 24S RGE 16E
1155 FSL & 5115 FEL
NW1/4NW-SW1/4SW
API #: 15-207-28164-00-00
Other Services

Company: VIVA INTERNATIONAL, INC.
Well: GLADES #V-24
Field: VERNON
County: WOODSON
State: KANSAS

Location: SEC 9 TWP 24S RGE 16E
1155 FSL & 5115 FEL
NW1/4NW-SW1/4SW
API #: 15-207-28164-00-00
Other Services

Company: VIVA INTERNATIONAL, INC.
Well: GLADES #V-24
Field: VERNON
County: WOODSON
State: KANSAS

Location: SEC 9 TWP 24S RGE 16E
1155 FSL & 5115 FEL
NW1/4NW-SW1/4SW
API #: 15-207-28164-00-00
Other Services

Date	6-20-12	Run Number	1 NW
Depth Driller	1067	Depth Logger	1062.8
Top Log Interval	0	Bottom Logged Interval	1062.8
Fluid Level	FULL	Type Fluid	WATER
Production Casing	2 7/8" @ TD	Max. Recorded Temp.	
Estimated Cement Top		Calculated Cement Top	
Amount & Type Cement		Drilling Contractor	
Equipment Number	109	Location	SOLONON, B.
Recorded By	WEST, T.	Witnessed By	

All interpretations are opinions based on inferences from electrical or other measurements and we cannot and do not guarantee the accuracy or correctness of any interpretation, and we shall not, except in the case of gross or willful negligence on our part, be liable or responsible for any loss, costs, damages, or expenses incurred or sustained by anyone resulting from any interpretation made by any of our officers, agents or employees. These interpretations are also subject to our general terms and conditions set out in our current Price Schedule.

Comments

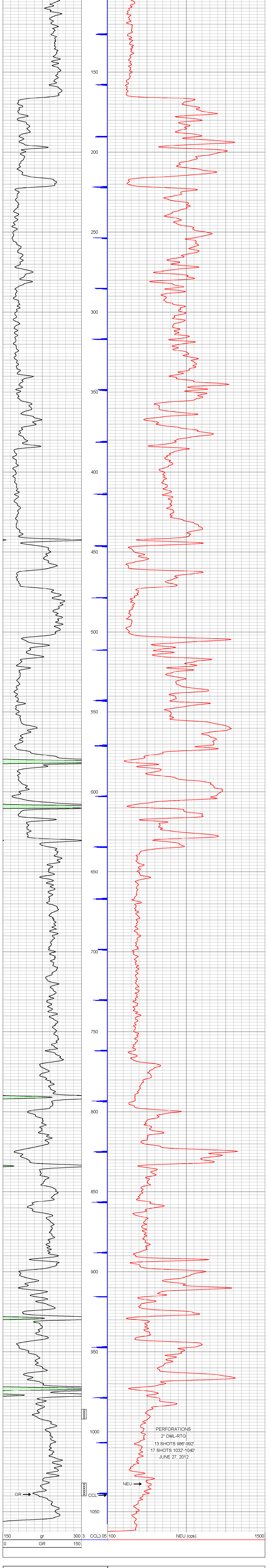
THANK YOU

Sensor	Offset (ft)	Schematic	Description	Len (ft)	OD (in)	Wt (lb)
GR	7.59		GR-TITAN_169 (TIT169_001) Titan 1 11/16" Gamma Ray	4.75	1.69	20.00
CCL	5.05		CCL-TITAN_169 (TIT169) Titan 1 11/16" Logging CCL	1.83	1.69	7.50
NEU	0.63		NEU-TITAN (TIT801) TITAN 1 11/16" Neutron	4.33	1.69	25.00

Dataset: glades #v-24 db: field/well/run1/pass1
Total Length: 10.92 ft
Total Weight: 52.50 lb
O D: 1.69 in

Database File: f:\viva international, inc\glades #v-24\glades #v-24.db
Dataset Pathname: pass1
Presentation Format: gr-n-ccl
Dataset Creation: Wed Jun 20 10:49:47 2012 by Log Std Casedhole 09061
Charted by: Depth in Feet scaled 1:240

150	gr	300	3	CCL.05	100	NEU (cps)	1500
0	GR	150					



Company	VIVA INTERNATIONAL, INC.
Well	GLADES #V-24
Field	VERNON
County	WOODSON SEC. 9 TWP. 24S RGE 16E
State	KANSAS
Date	6-20-12