



**GAMMA RAY
NEUTRON
COMPLETION LOG**

Company: VIVA INTERNATIONAL, INC.
Well: GLADES #V-25
Field: VERNON
County: WOODSON
State: KANSAS

Location: 2905 FSL & 4789 FEL
SE SW SW NW
SEC 9 TWP 24S RGE 16E
Permanent Datum: GL
Log Measured From: GL
Drilling Measured From: GL

API #: 15-207-28235-00-00
Other Services: Elevation: 1043 EST
K 8
D.F. 1043 EST

Date: 6-27-12
Run Number: 1 NW
Depth Diller: 10593.8'

Top Log Interval: 0
Bottom Logged Interval: 10593.8'
Fluid Level: FULL

Type Fluid: WATER

Production Gauge: 2 7/8" @ TD
Max. Recorded Temp: @
Estimated Cement Top: @
Calculated Cement Top: @
Amount & Type Cement: @
Drilling Contractor: @
Equipment Number: @
Location: @
Recorded By: SAMBORN, G
Witnessed By: WAST, T

<<< Fold Here >>>

All interpretations are opinions based on inferences from electrical or other measurements and we cannot and do not guarantee the accuracy or correctness of any interpretation, and we shall not, except in the case of gross or willful negligence on our part, be liable or responsible for any loss, costs, damages, or expenses incurred or sustained by anyone resulting from any interpretation made by any of our officers, agents or employees. These interpretations are also subject to our general terms and conditions set out in our current Price Schedule.

Comments

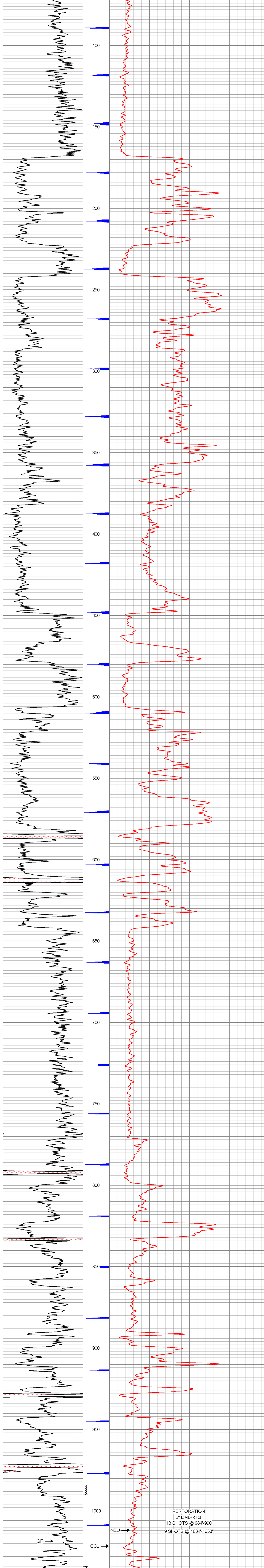
THANK YOU

Sensor	Offset (ft)	Schematic	Description	Len (ft)	OD (in)	Wt (lb)
GR	7.61		GR-TITAN_169 (TIT169_001) Titan 1 11/16" Gamma Ray	4.75	1.69	20.00
CCL	5.05		CCL-TITAN_169 (TIT169) Titan 1 11/16" Logging CCL	1.83	1.69	7.50
NEU	0.63		NEU-TITAN (TIT801) TITAN 1 11/16" Neutron	4.33	1.69	25.00

Dataset: glades #v25 db: field/well/run1/pass1
Total Length: 10.92 ft
Total Weight: 52.50 lb
O.D.: 1.69 in

Database File: h:\glades #v25 db
Dataset Pathname: pass1
Presentation Format: gr-n-cl
Dataset Creation: Wed Jun 27 11:14:04 2012 by Log SCH 110930
Charted by: Depth in Feet scaled 1.240

150	gr	300	3	CCLJ.05	100	NEU (cps)	1500
0	GR	150					



150	gr	300	3	CCLJ.05	100	NEU (cps)	1500
0	GR	150					

PERFORATION:
2" DML-RTG
13 SHOTS @ 984-990'
9 SHOTS @ 1034-1038'