



DIGITAL LOG (785) 625-3858

Borehole Compensated  
Sonic Log

15-101-22,382-00-00

API No.

Company **Carmen Schmitt, Inc.**  
Well **Frontier Unit No. 1**  
Field **Wildcat**  
County **Lane** State **Kansas**

Location  
**NE NE NE NE  
100' FNL & 100' FEL**

Other Services  
CNL/CDL  
MEL/DIL

Sec: 1 Twp: 20S Rge: 30W

Permanent Datum Ground Level Elevation 2886  
Log Measured From Kelly Bushing 12 Ft. Above Perm. Datum  
Drilling Measured From Kelly Bushing

Elevation  
K.B. 2898  
D.F.  
G.L. 2886

Date	7/10/2012	
Run Number	Two	
Type Log	BHC Sonic	
Depth Driller	4750	
Depth Logger	4747	
Bottom Logged Interval	4736	
Top Logged Interval	200	
Type Fluid In Hole	Chemical	
Salinity, PPM CL	2700	
Density Level	9.1	
Max. Rec. Temp. F	Full	
Operating Rig Time	124	
Equipment -- Location	5 Hours	
Recorded By	108 Hays	
Witnessed By	J. Long	
	Vern Schrag	

Borehole Record

Casing Record

Run No.	Bit	From	To	Size	Wgt.	From	To
1	12.25	00	222	8.625	24#	00	222
2	7.875	222	4750				

<<< Fold Here >>>

All interpretations are opinions based on inferences from electrical or other measurements and we cannot and do not guarantee the accuracy or correctness of any interpretation, and we shall not, except in the case of gross or willful negligence on our part, be liable or responsible for any loss, costs, damages, or expenses incurred or sustained by anyone resulting from any interpretation made by any of our officers, agents or employees. These interpretations are also subject to our general terms and conditions set out in our current Price Schedule.

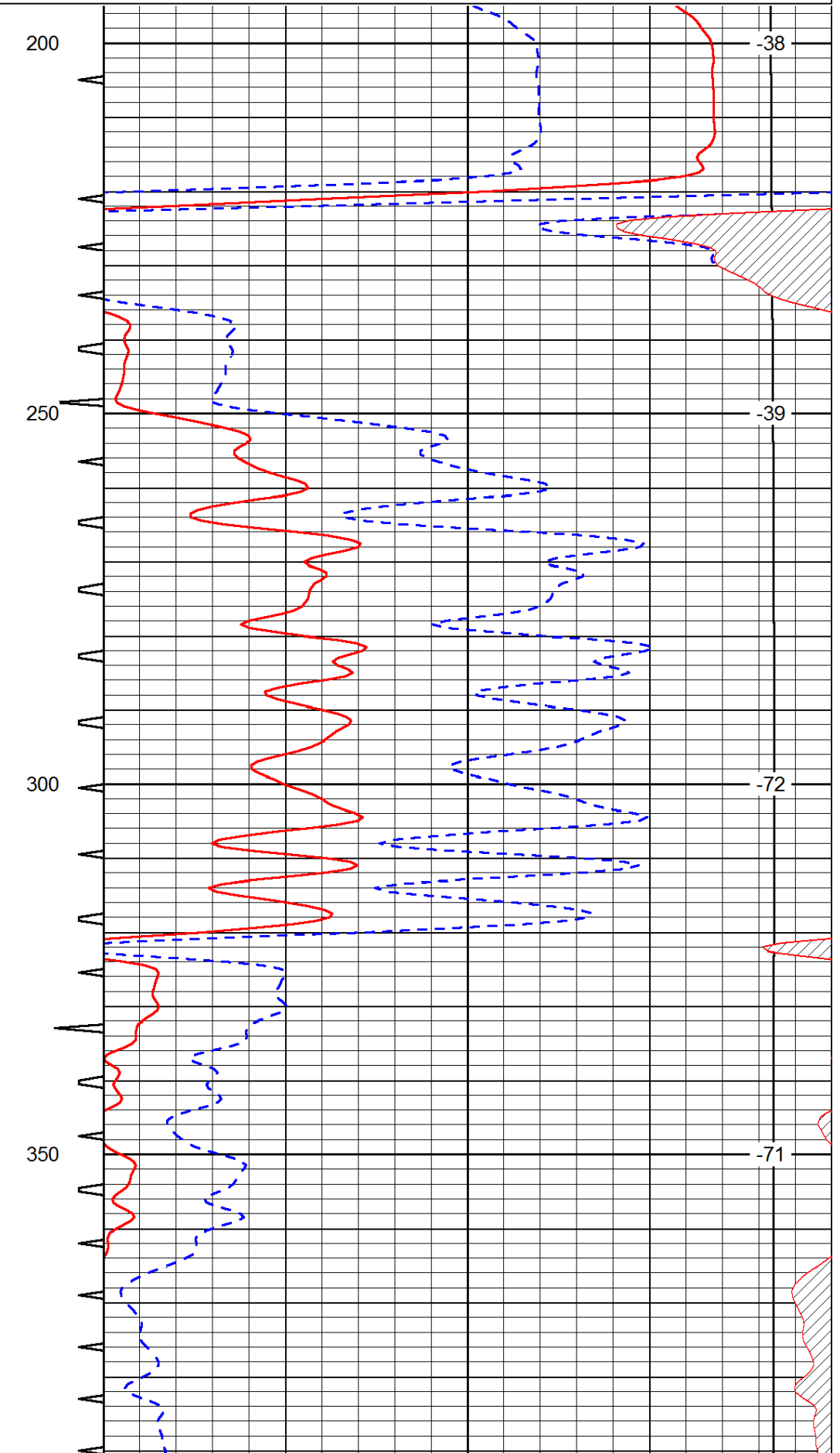
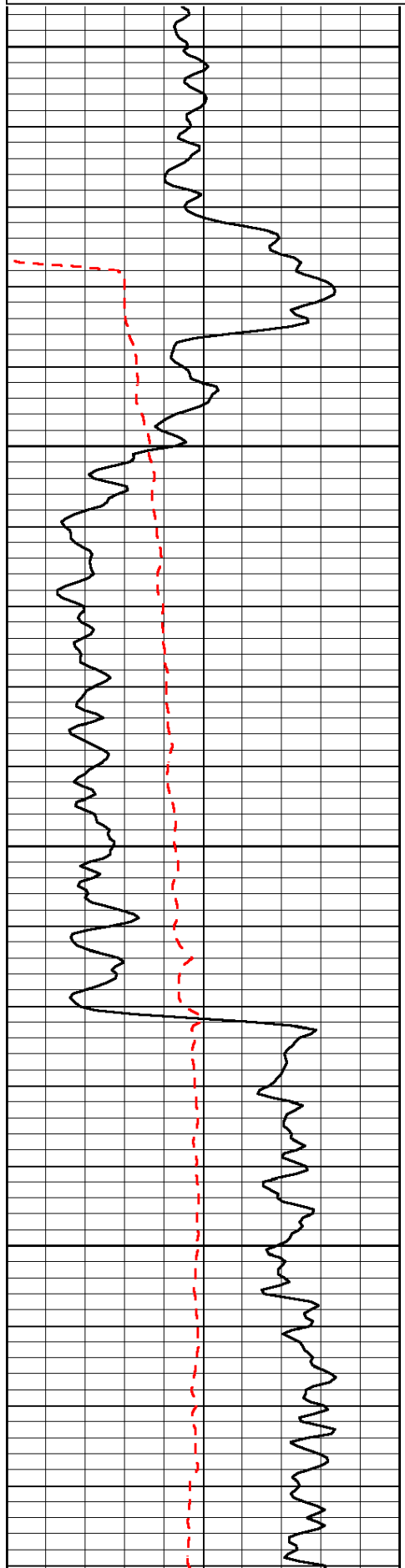
Comments

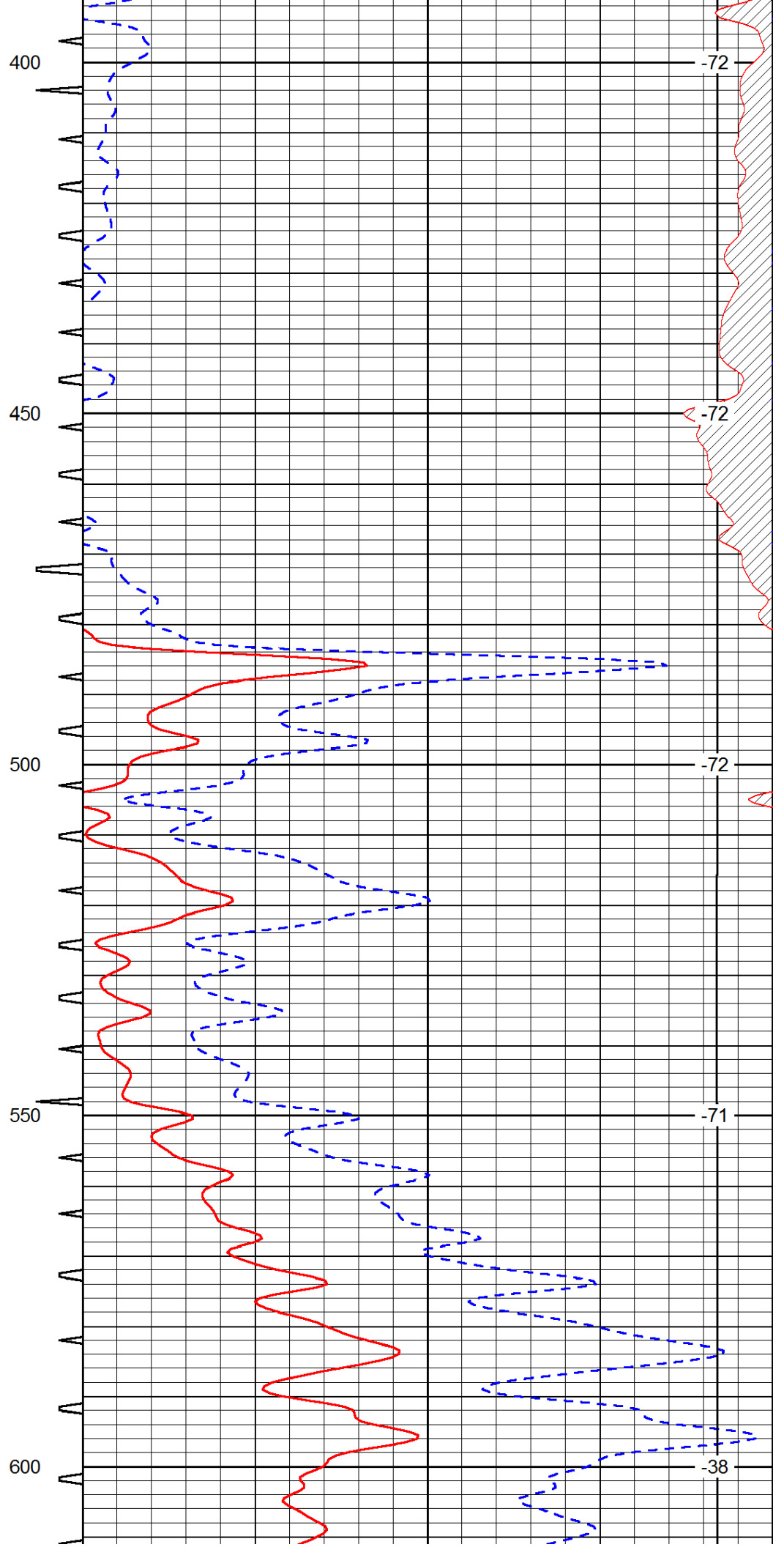
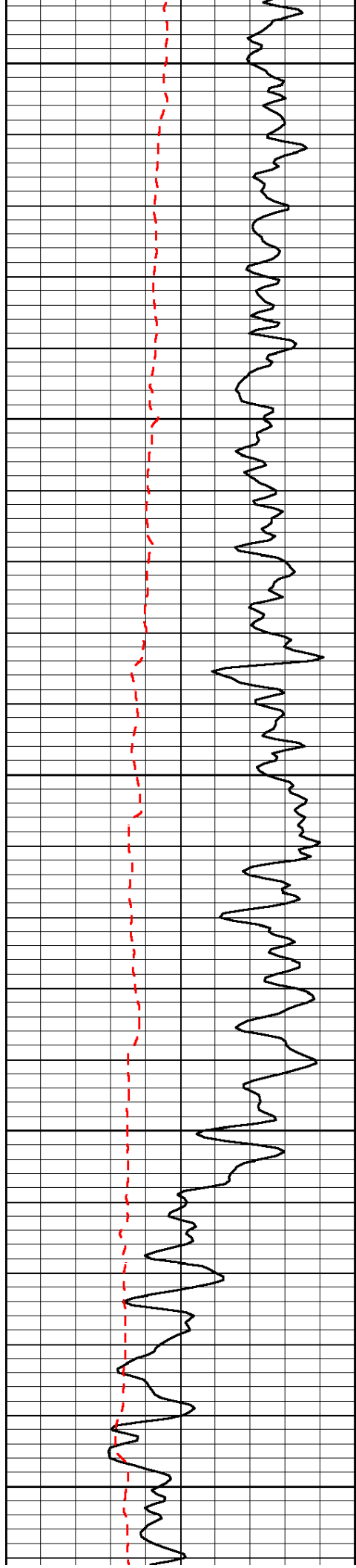
Thank you for using Log-Tech, Inc.  
(785) 625-3858  
  
Dighton, 9 South to 60 Road, 6 West, Southwest Into

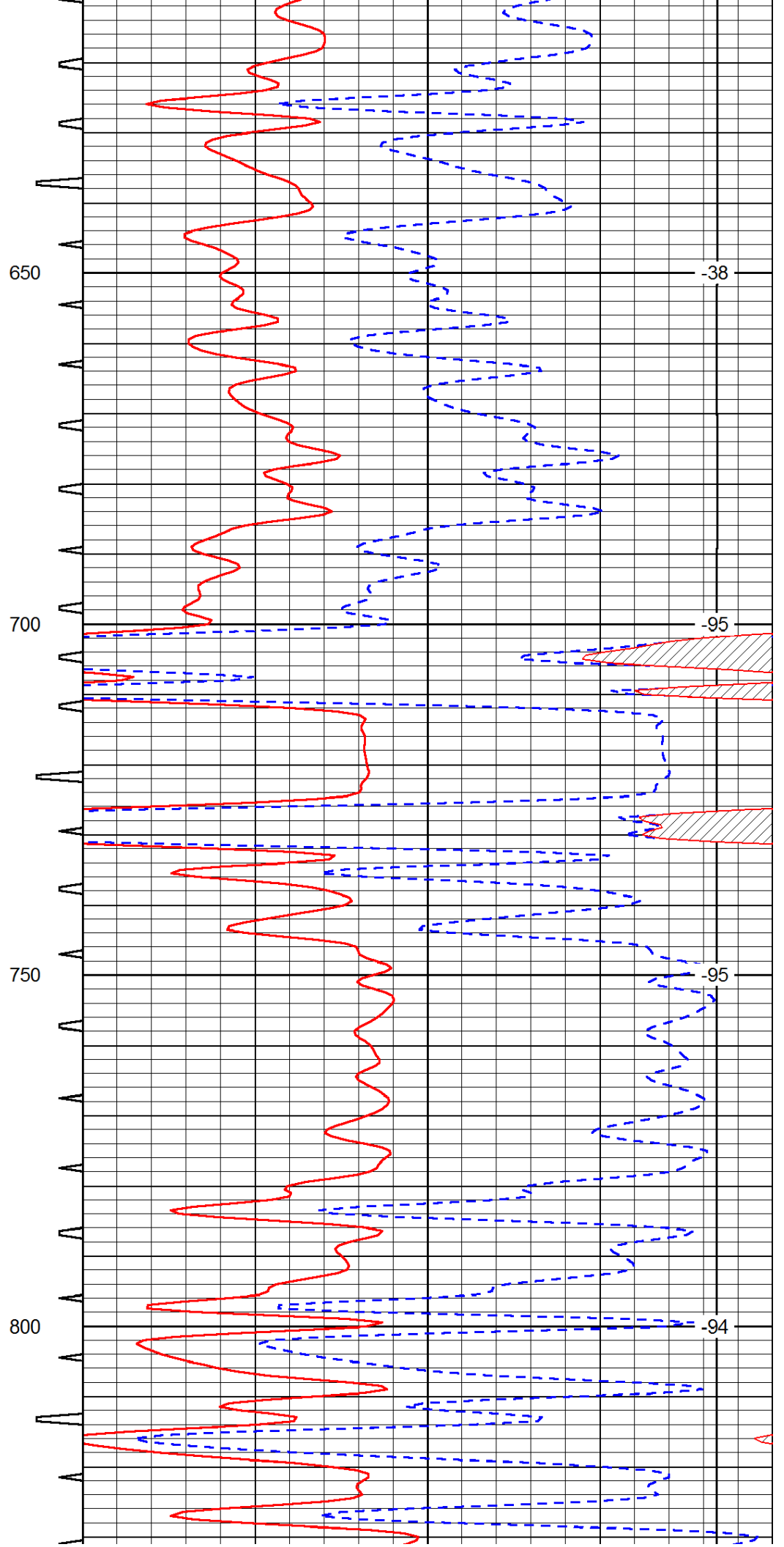
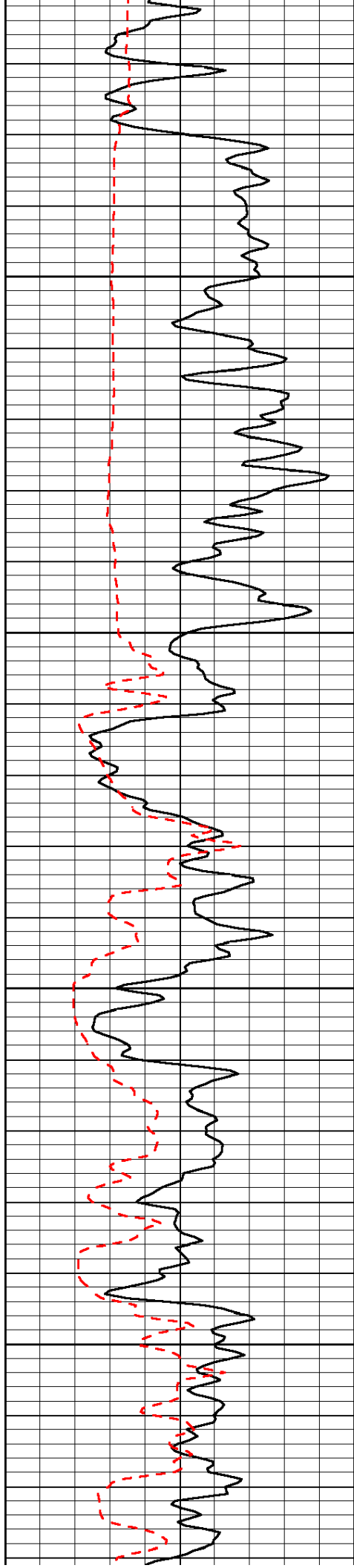
Database File: c:\warrior\data\carmen schmitt\_frontier unit no. 1\carmenschmitt\_frontier\_1hd.db  
Dataset Pathname: dil/carmstck  
Presentation Format: sonic  
Dataset Creation: Tue Jul 10 11:01:53 2012  
Charted by: Depth in Feet scaled 1:240

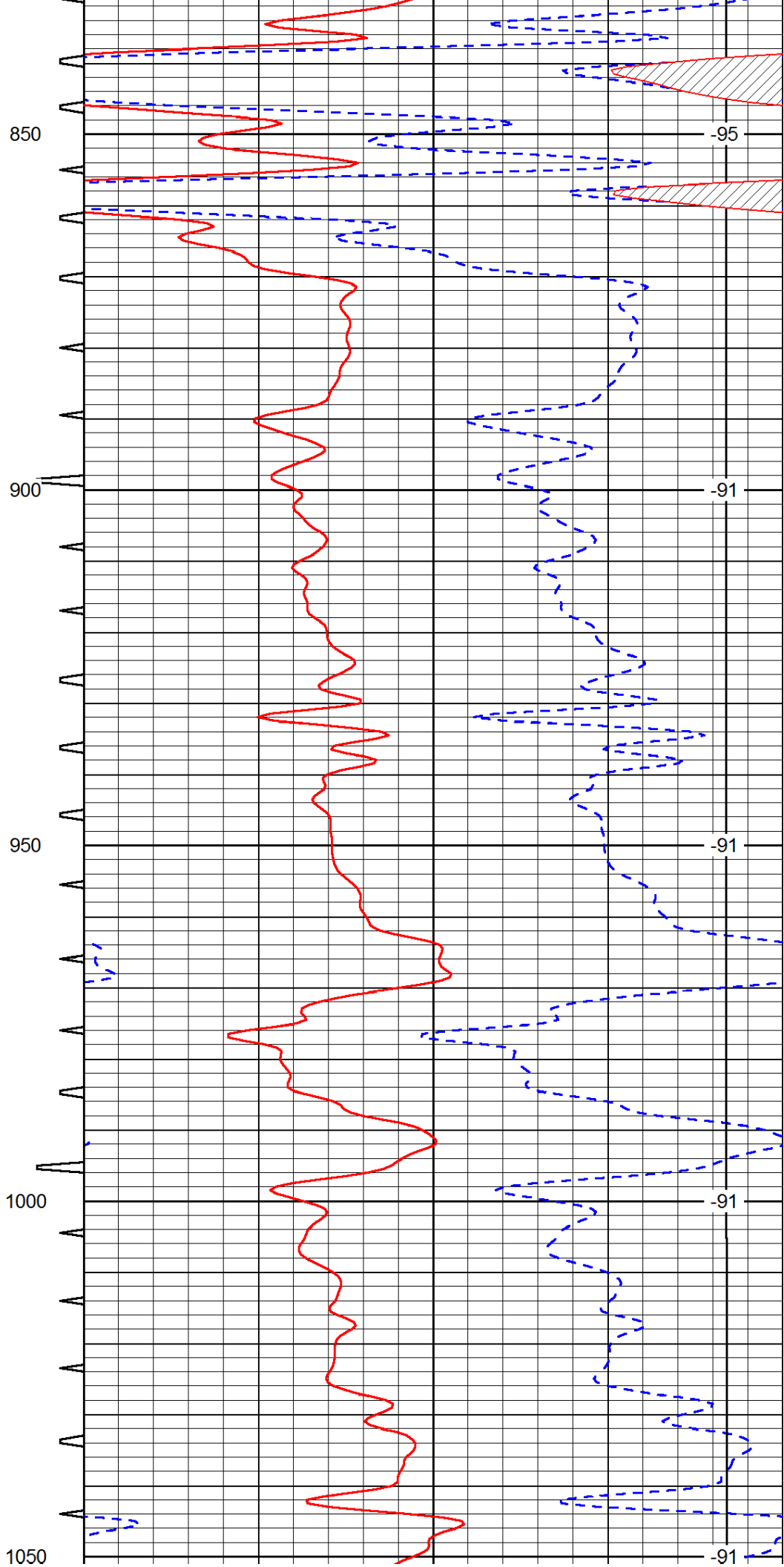
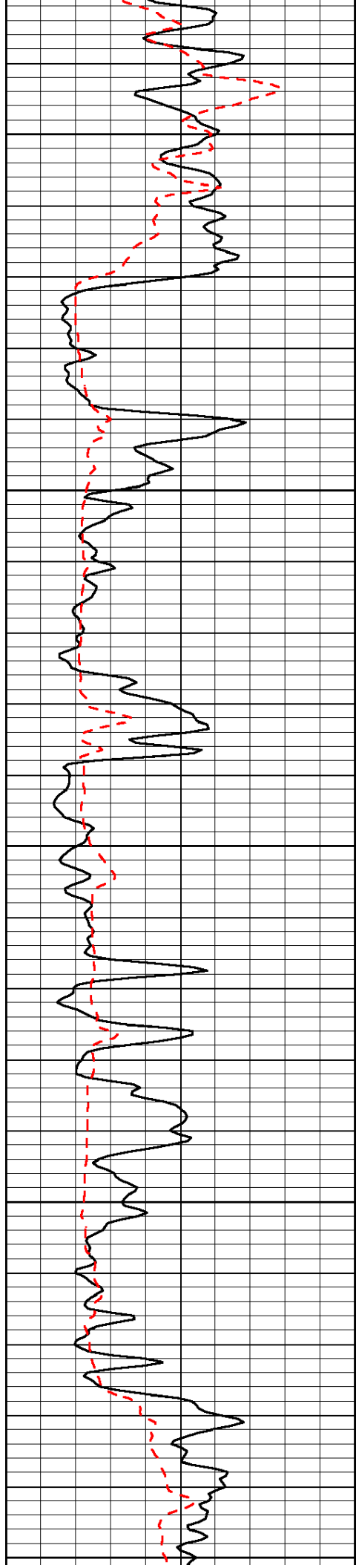
0	Gamma Ray	150	Sonic Int	140	Delta Time (usec/ft)	40
150	Gamma Ray	300	5	0	SPOR	-10
6	Caliper (GAPI)	16		15000	LTEN (lb)	0

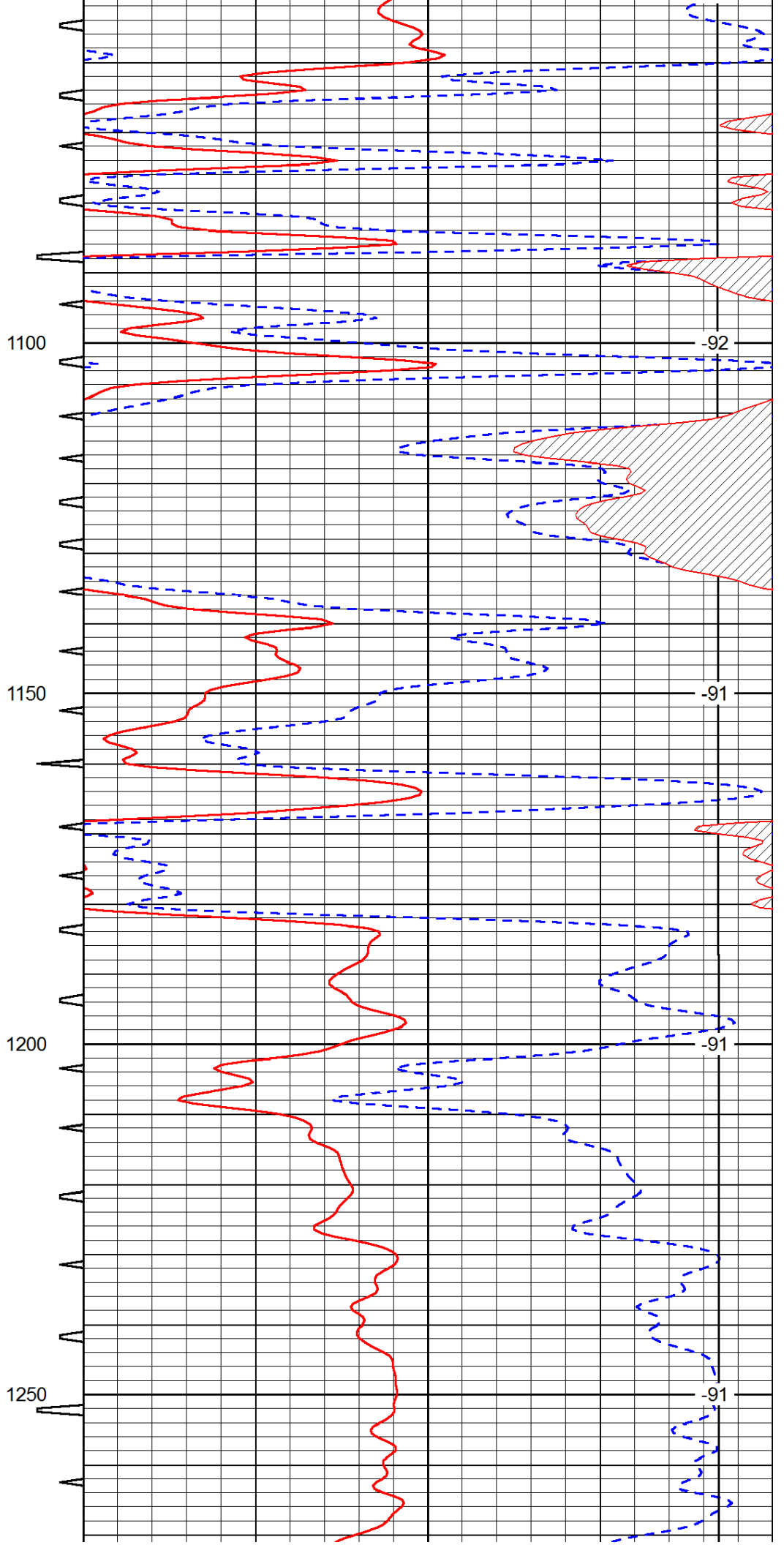
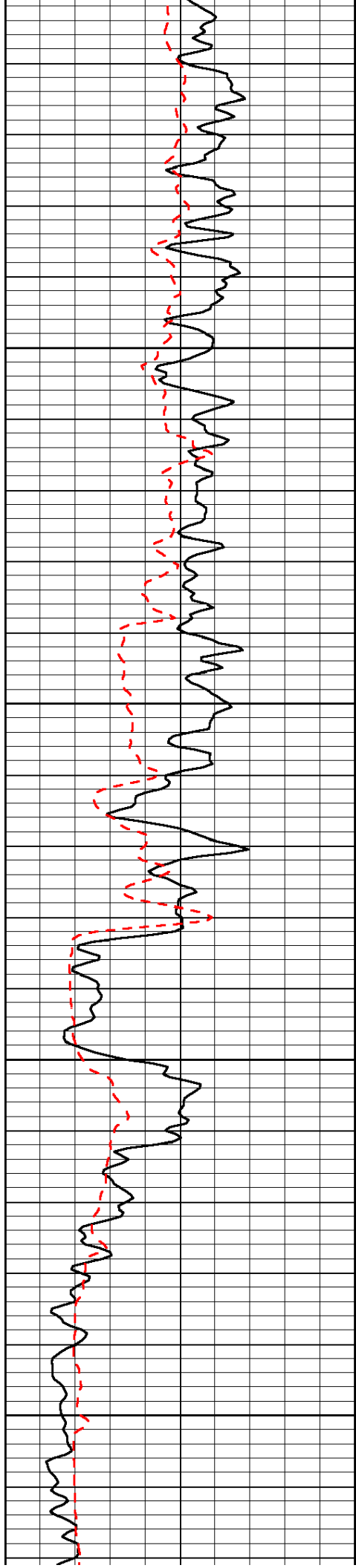
LSPD

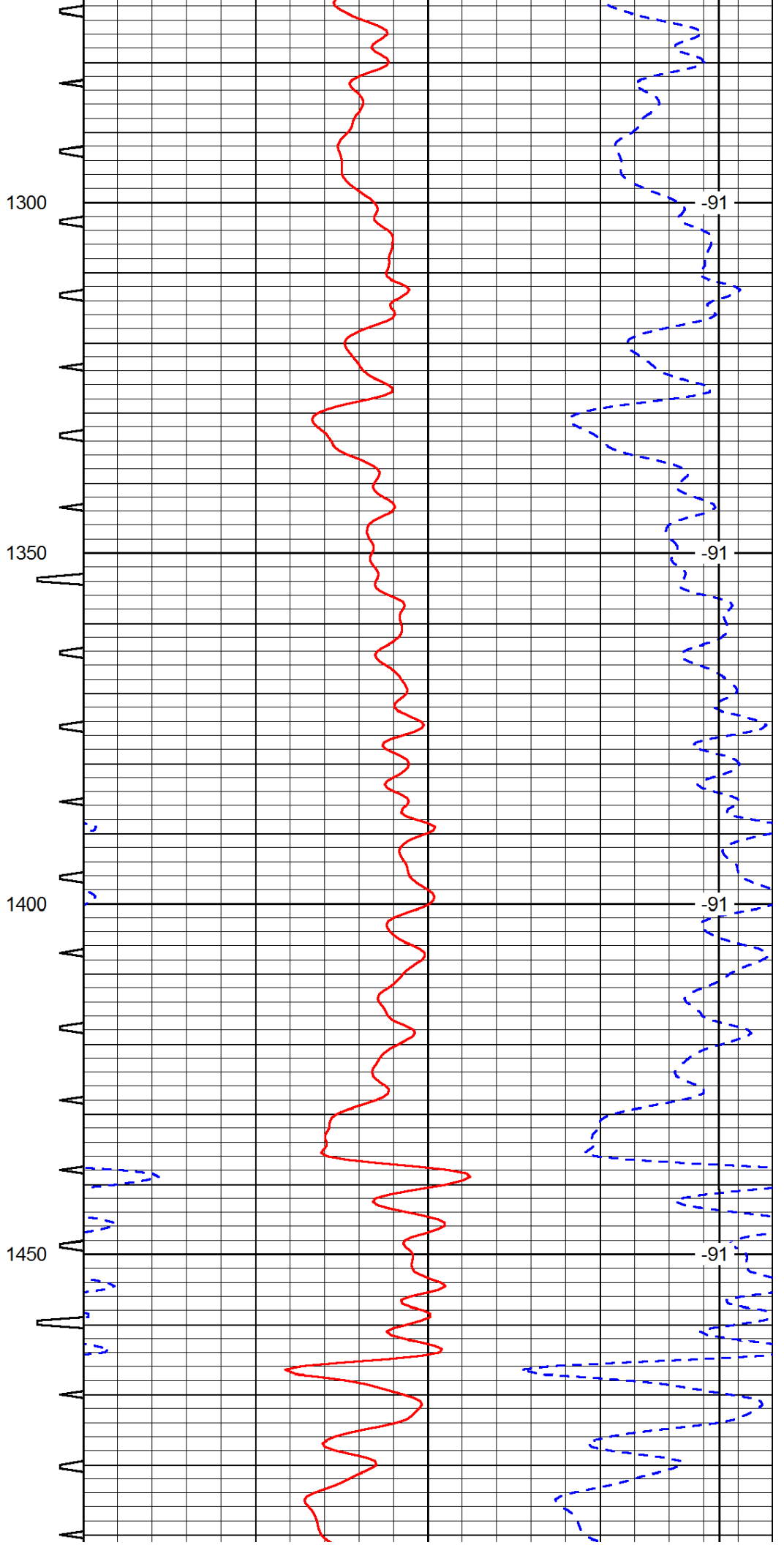
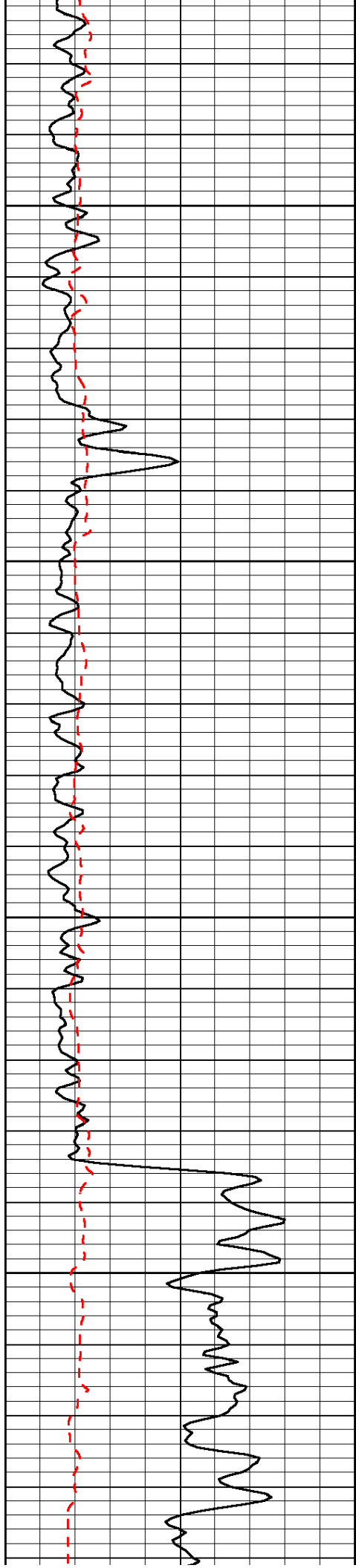


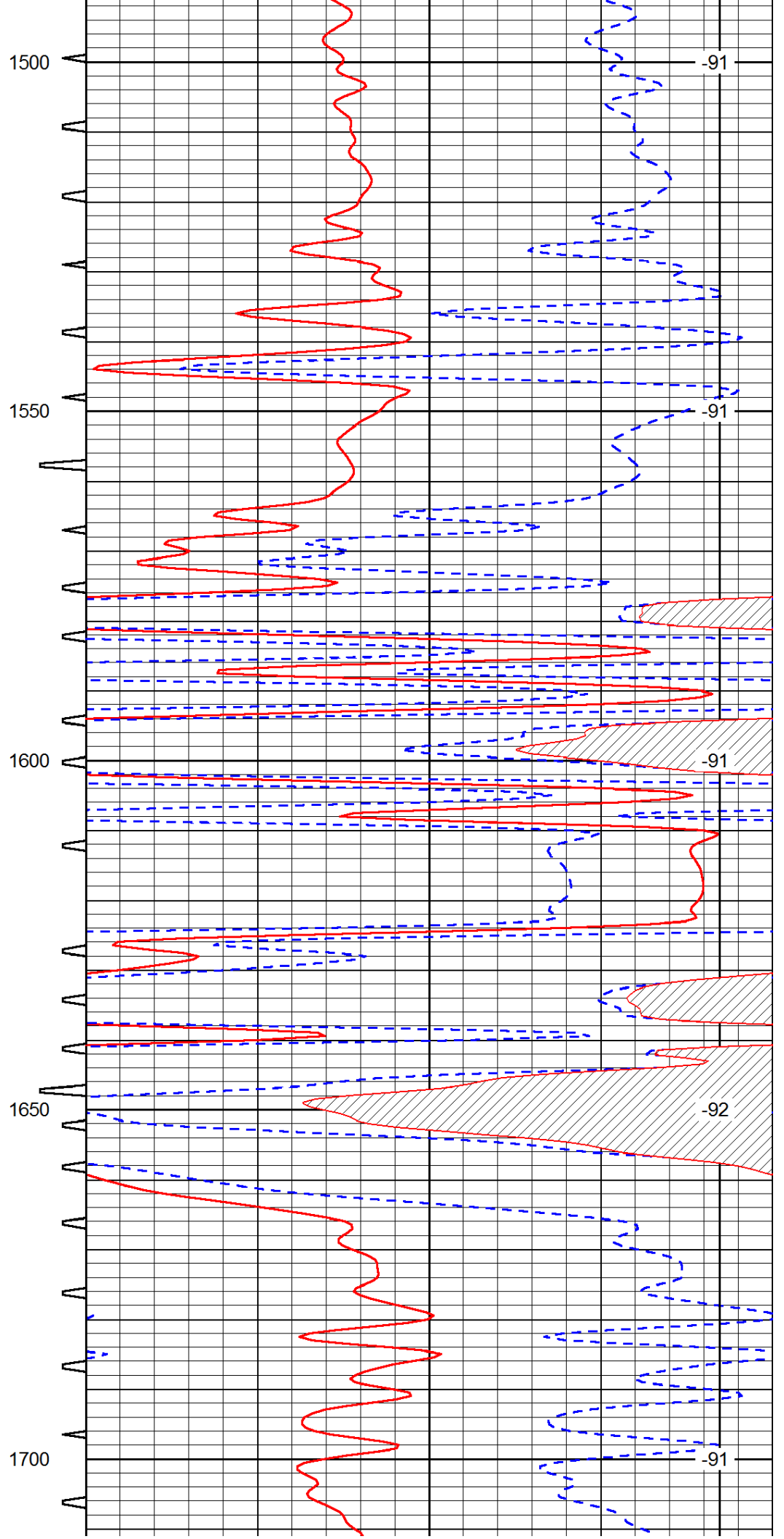
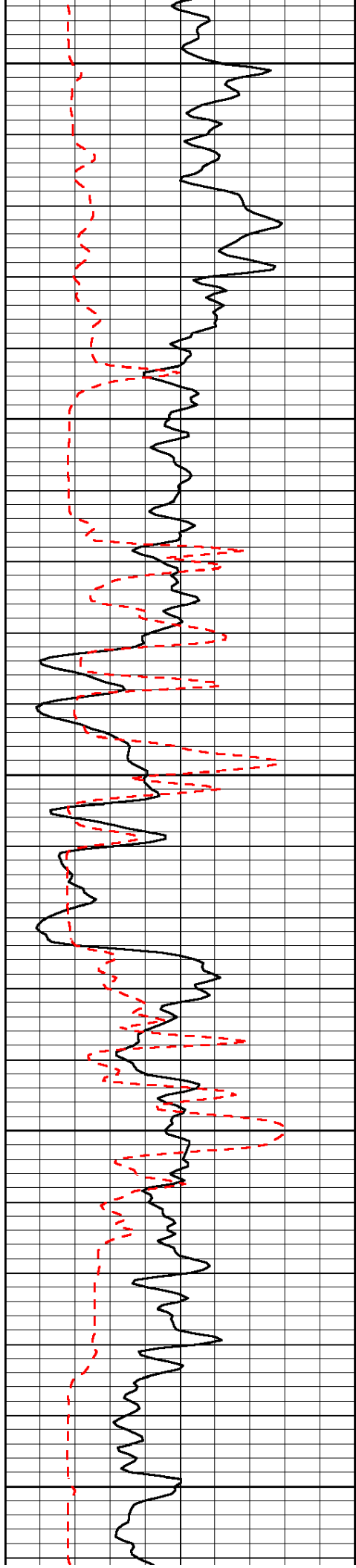




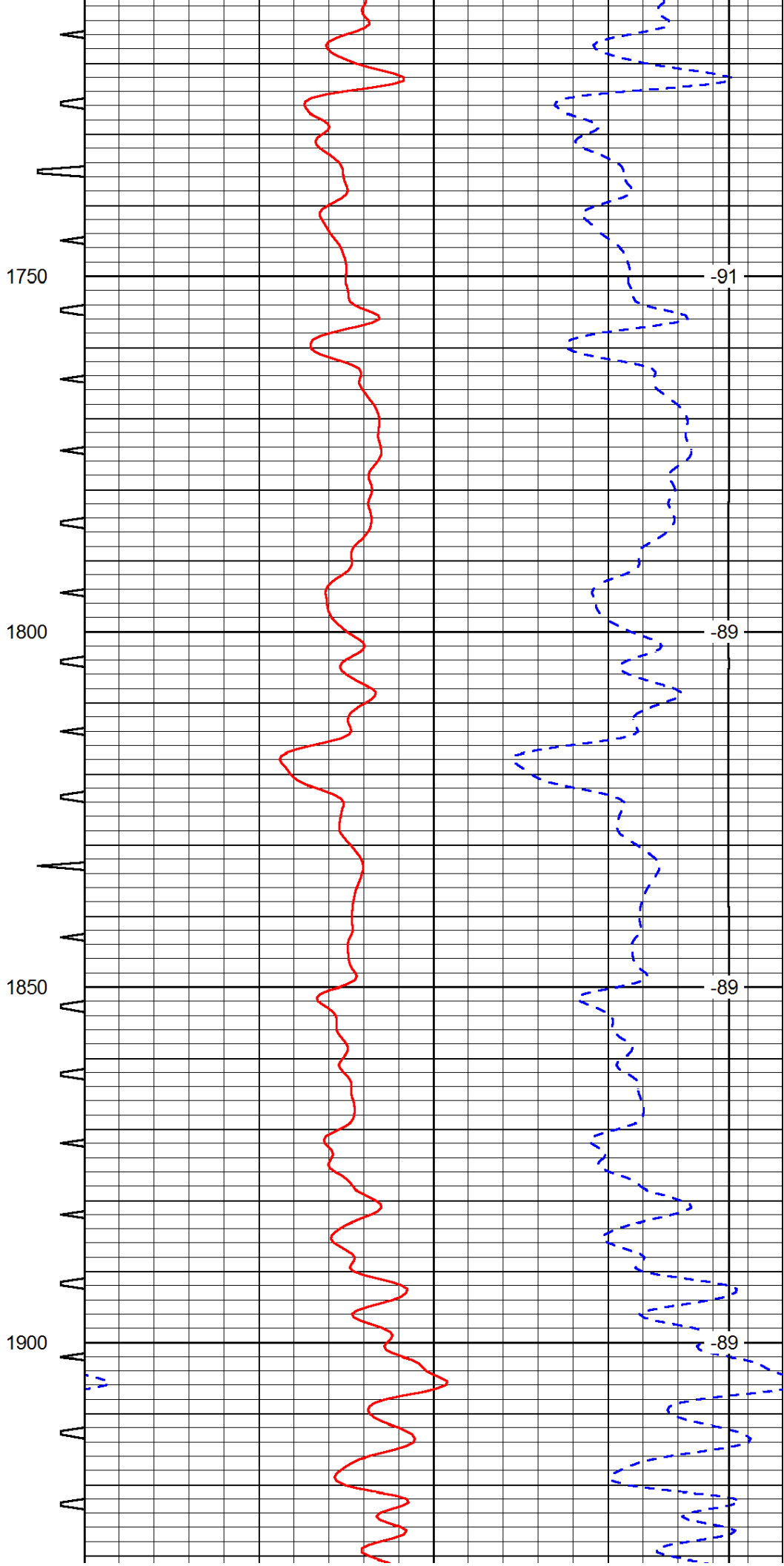
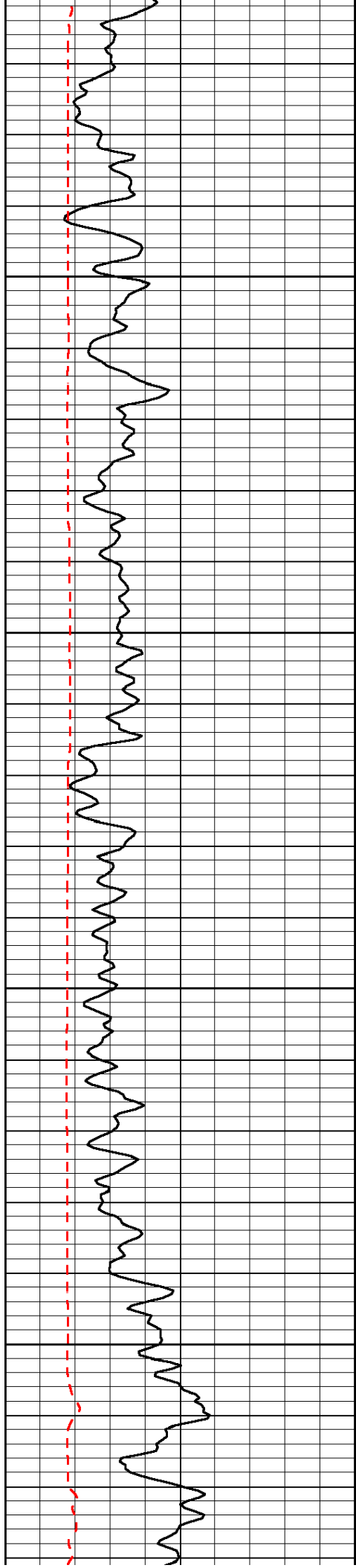


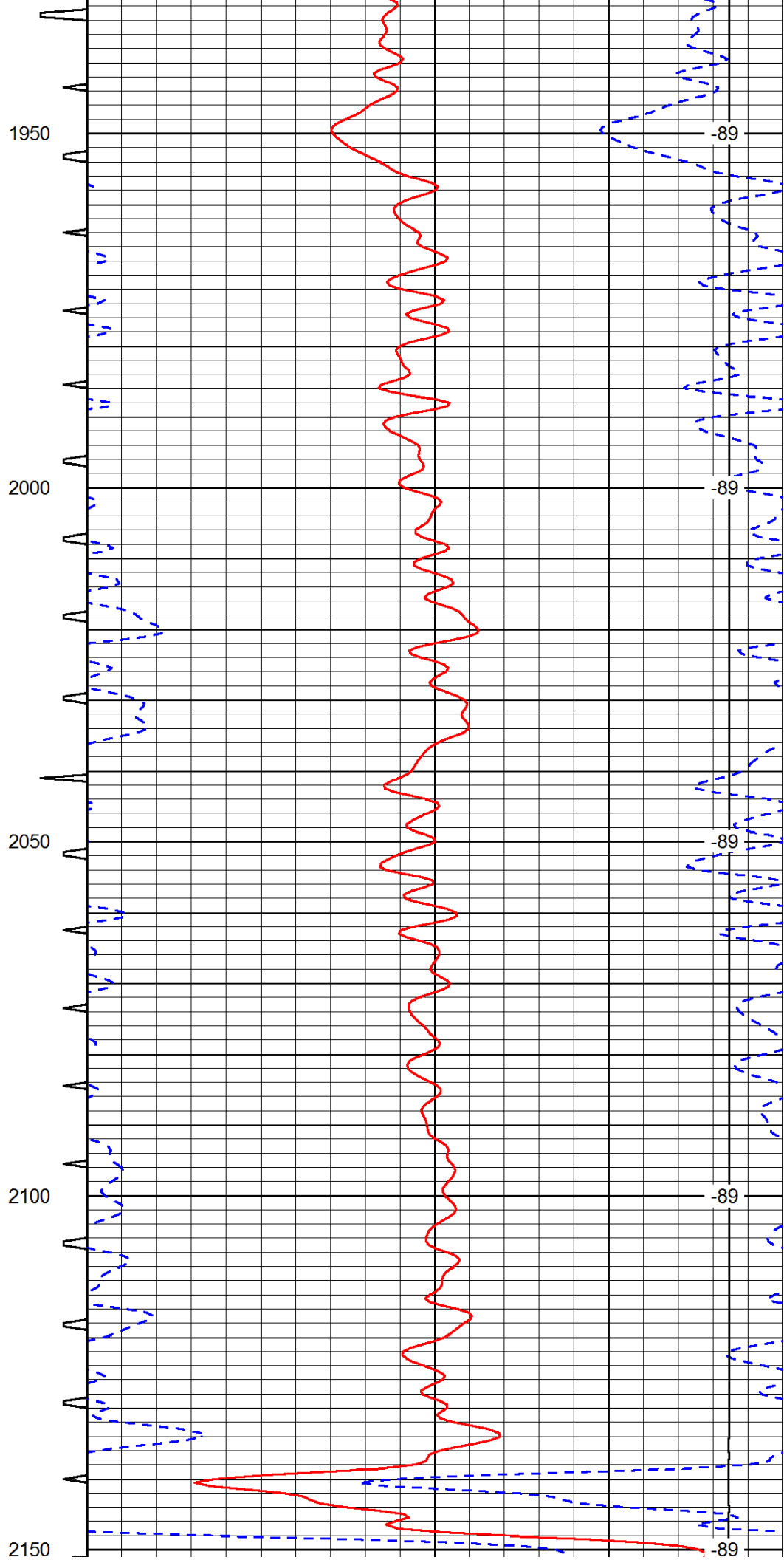
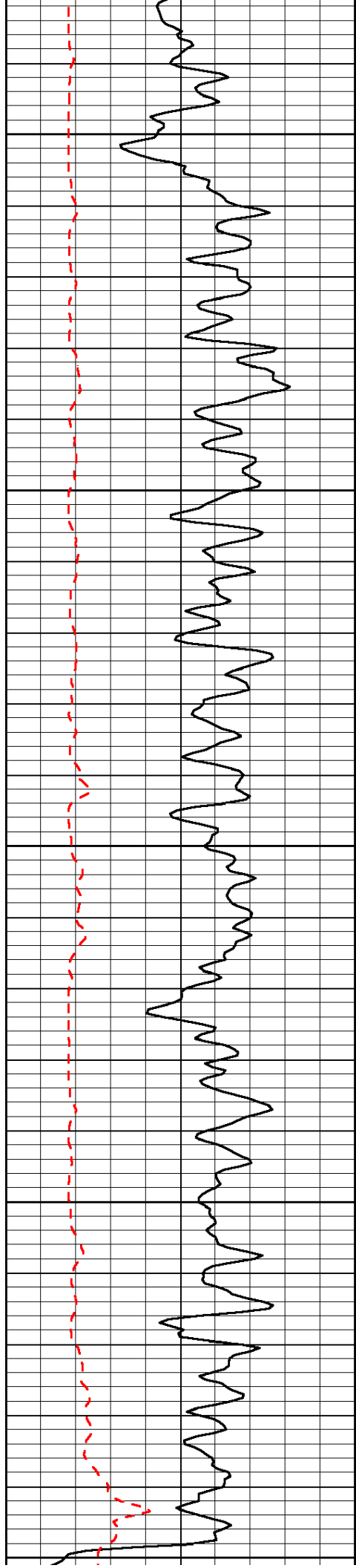


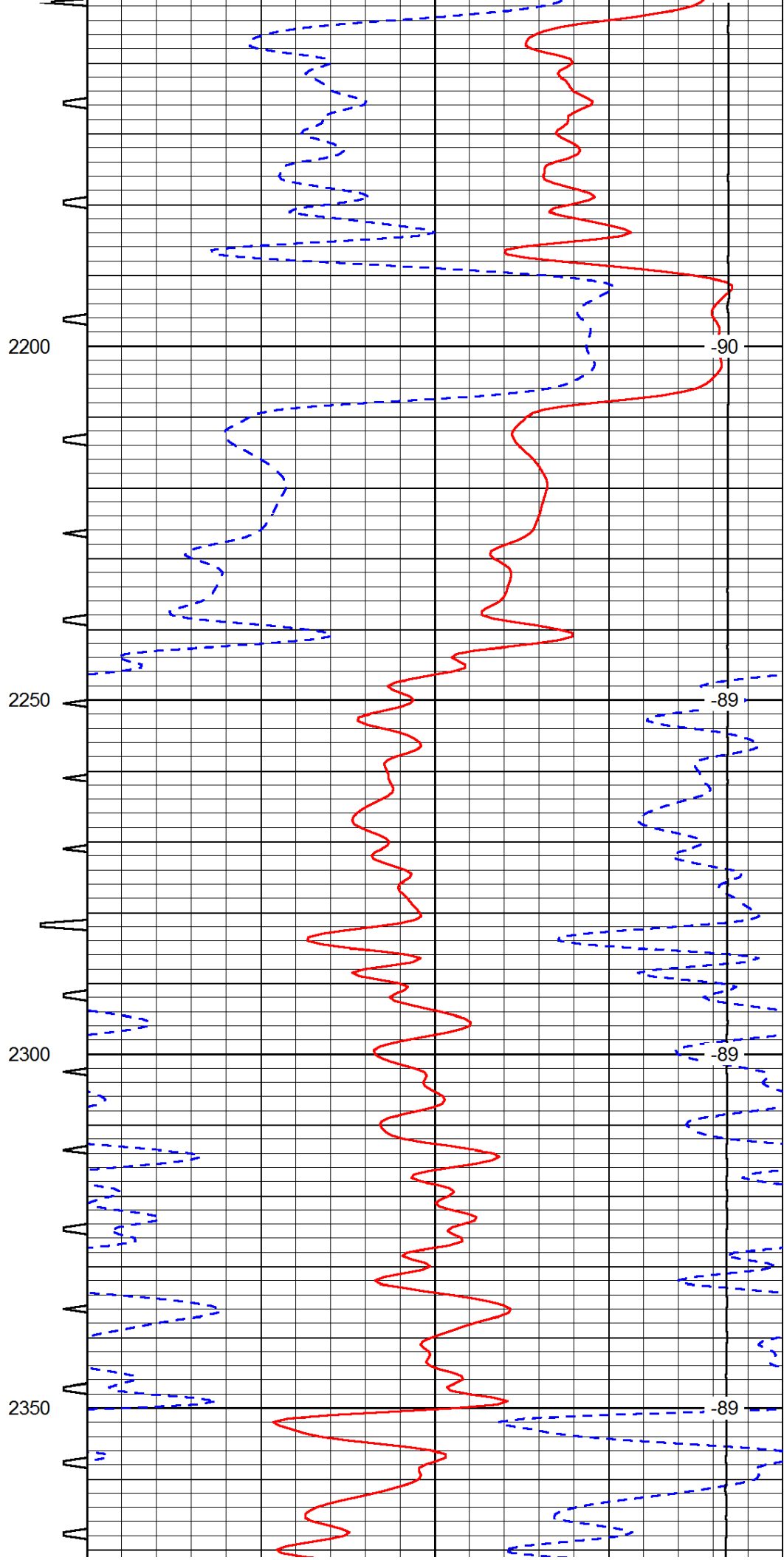
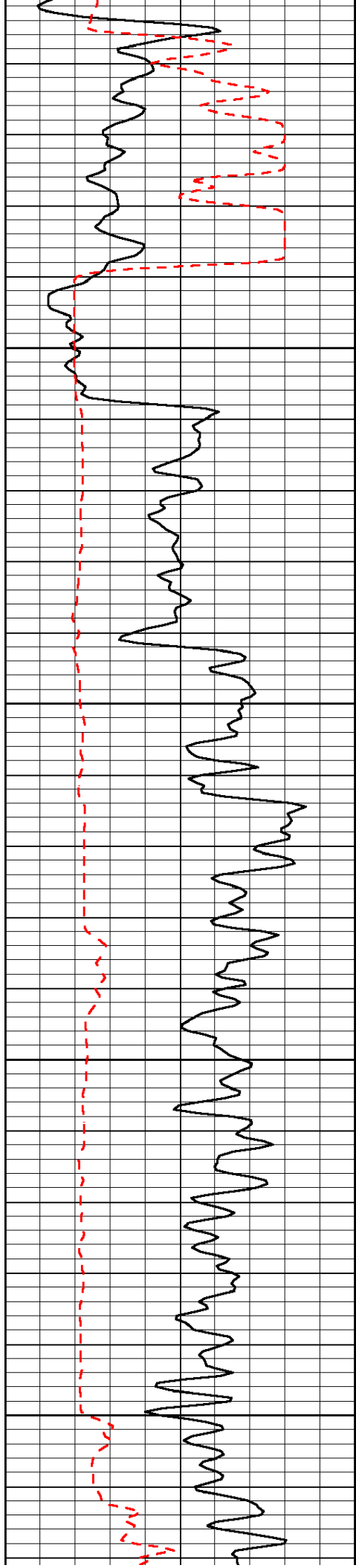


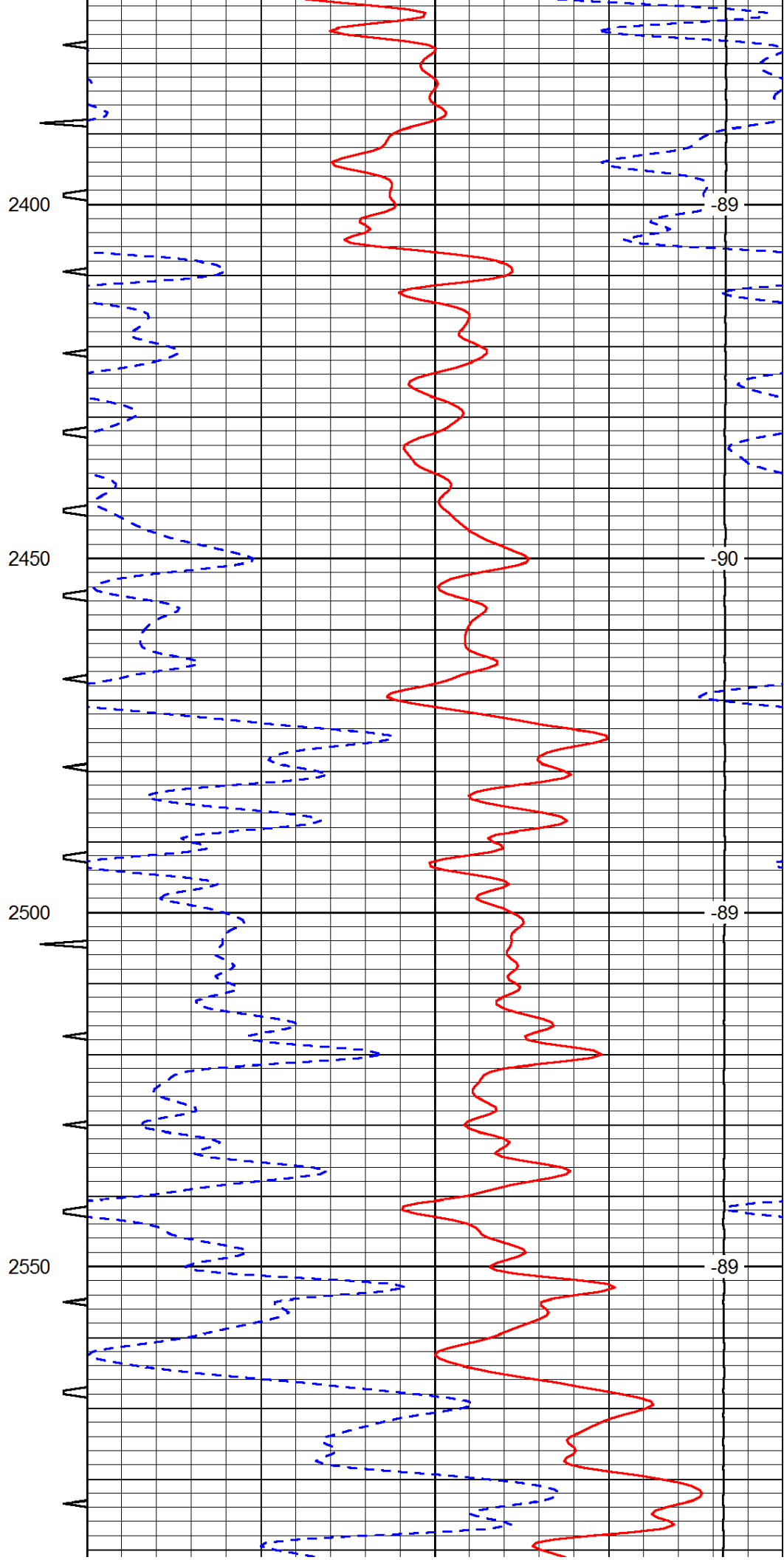
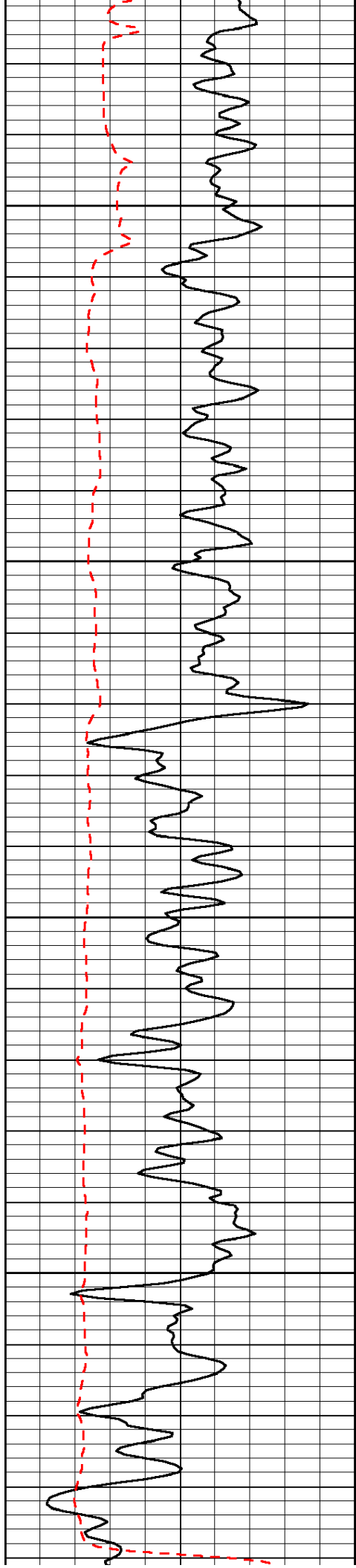




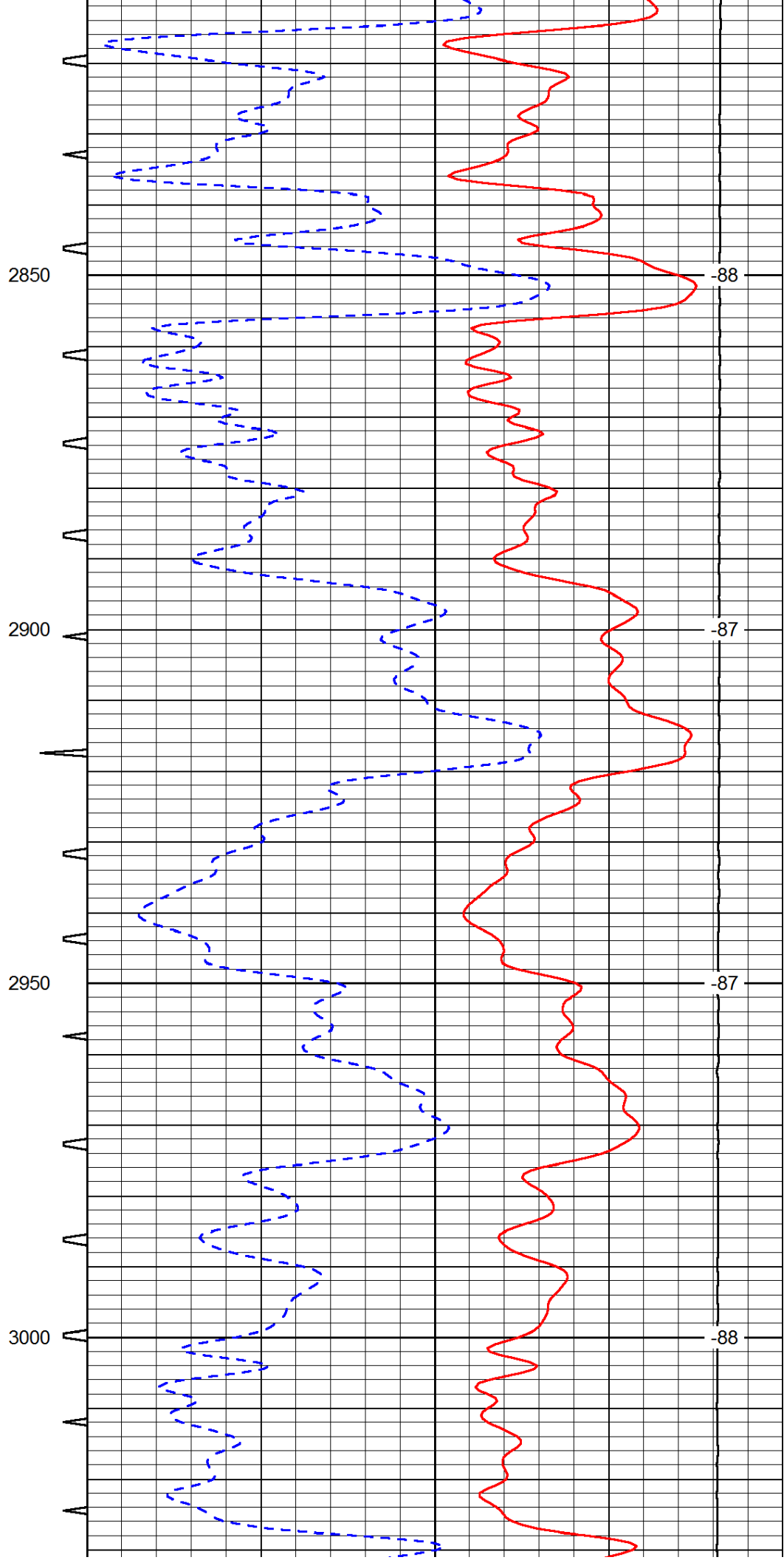
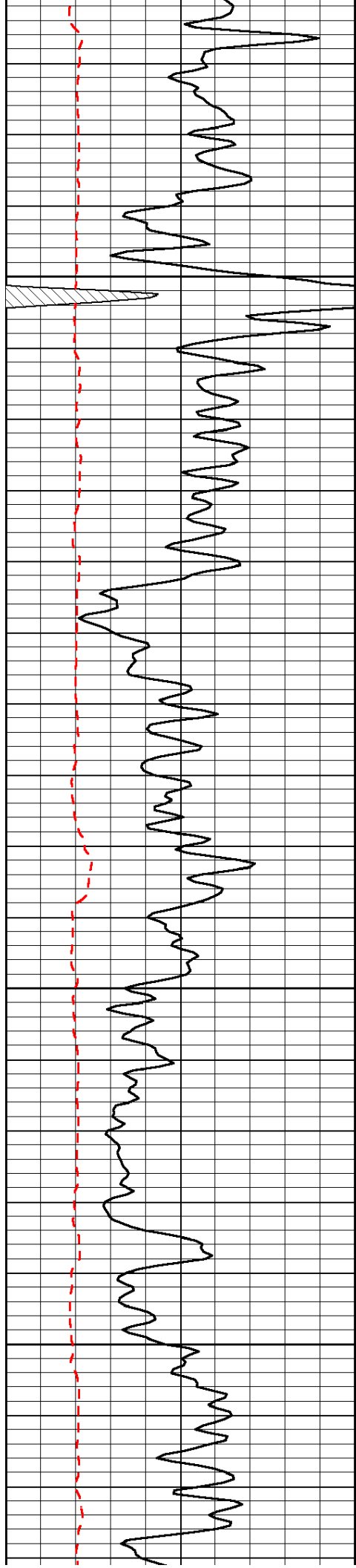


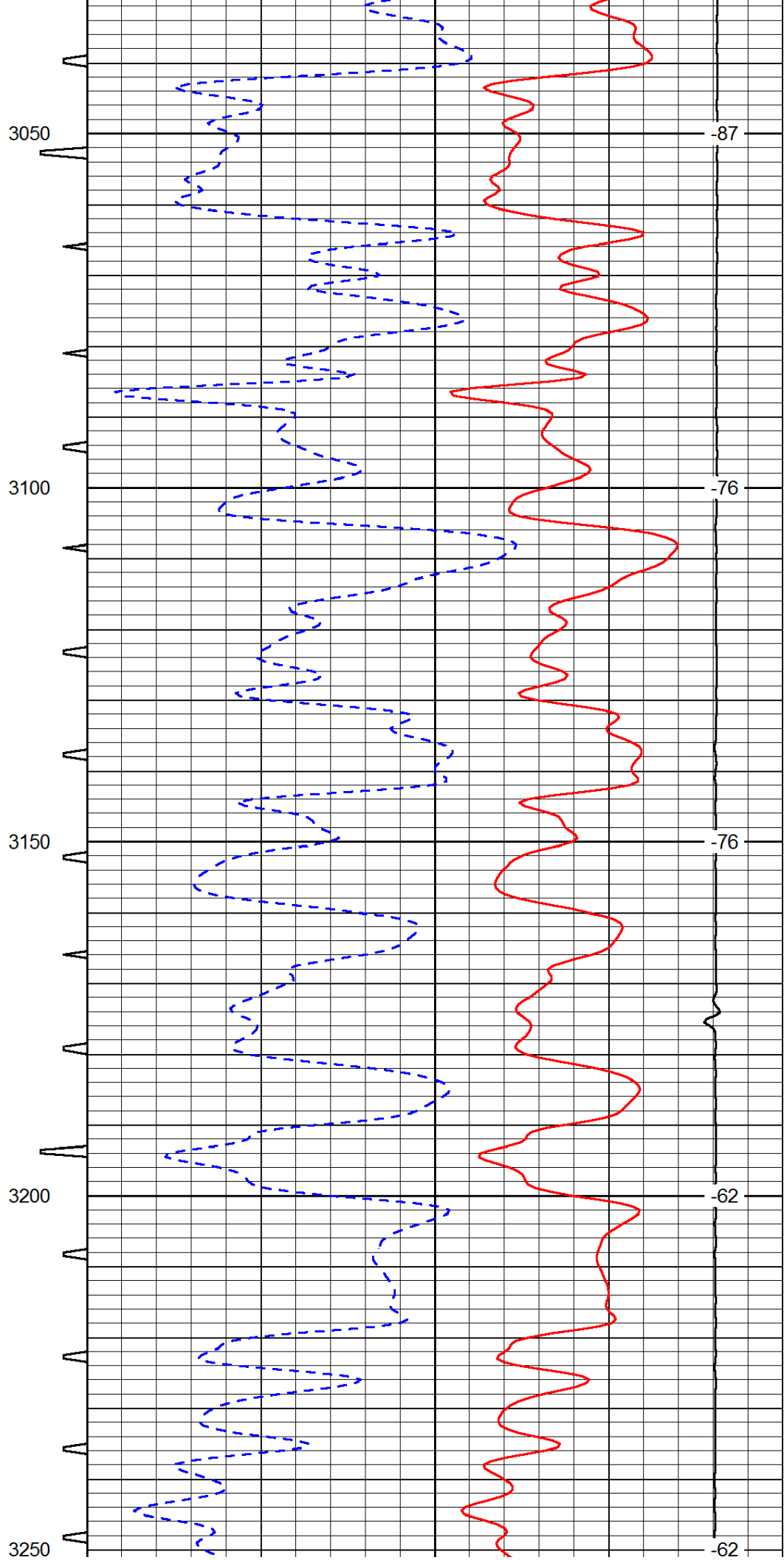
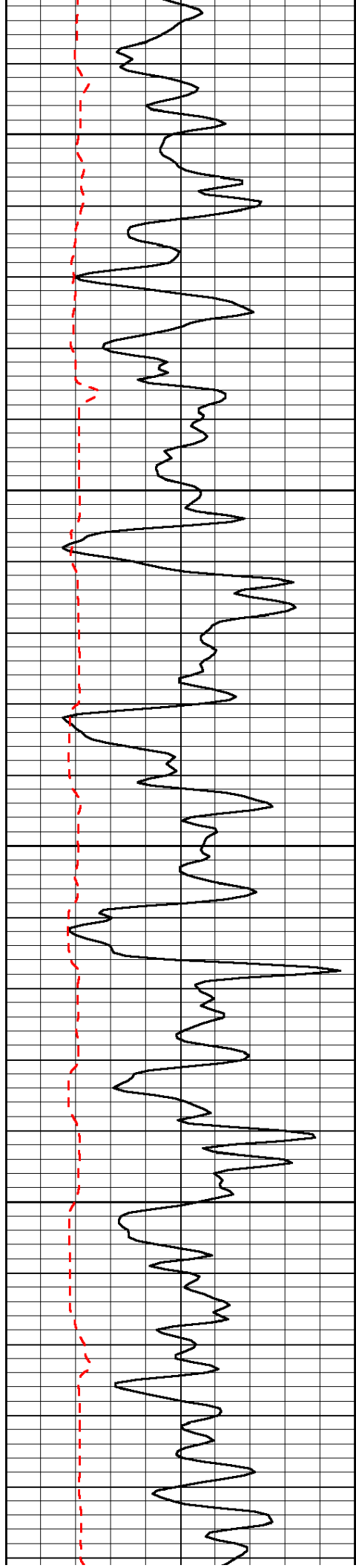


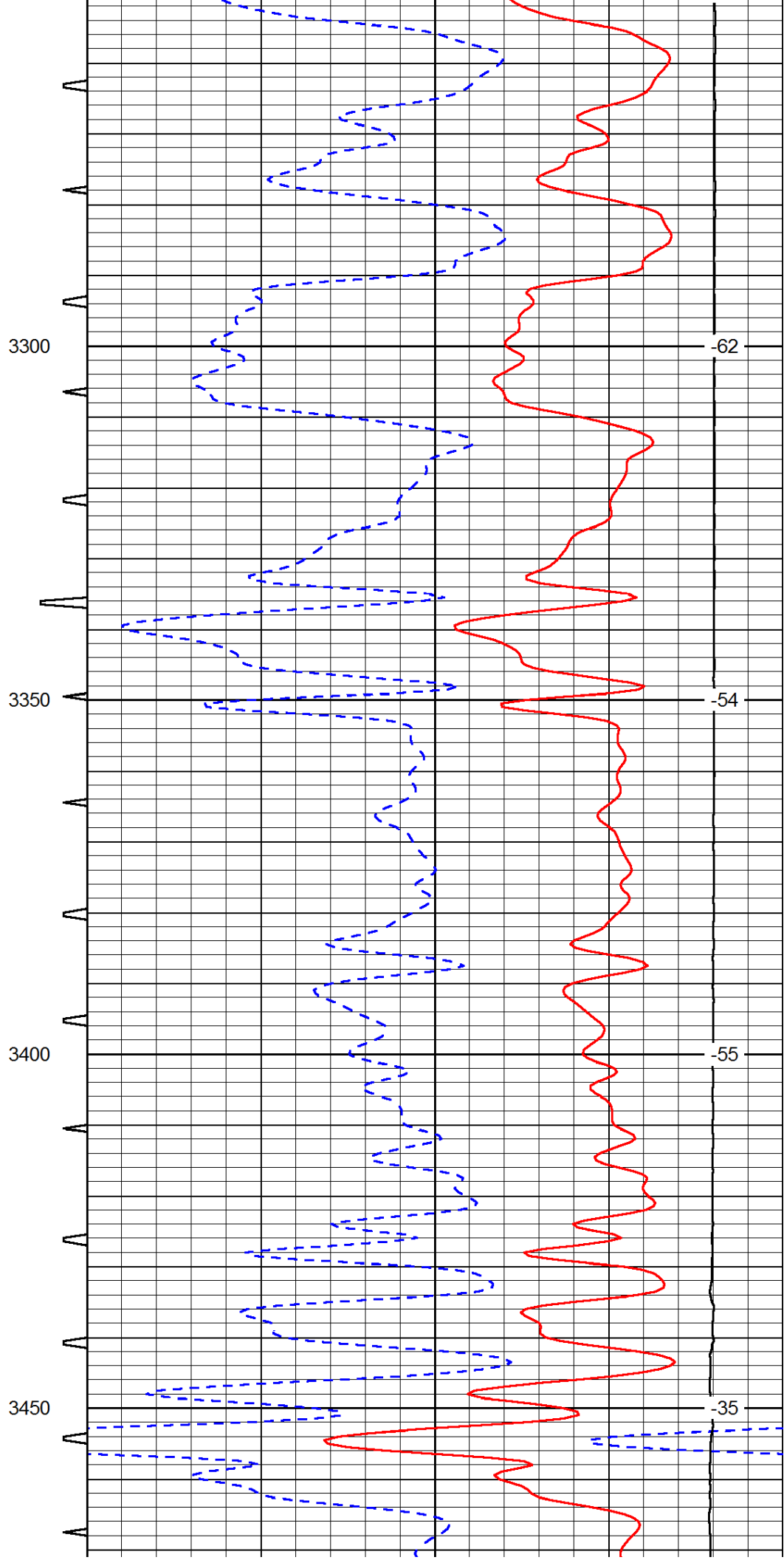
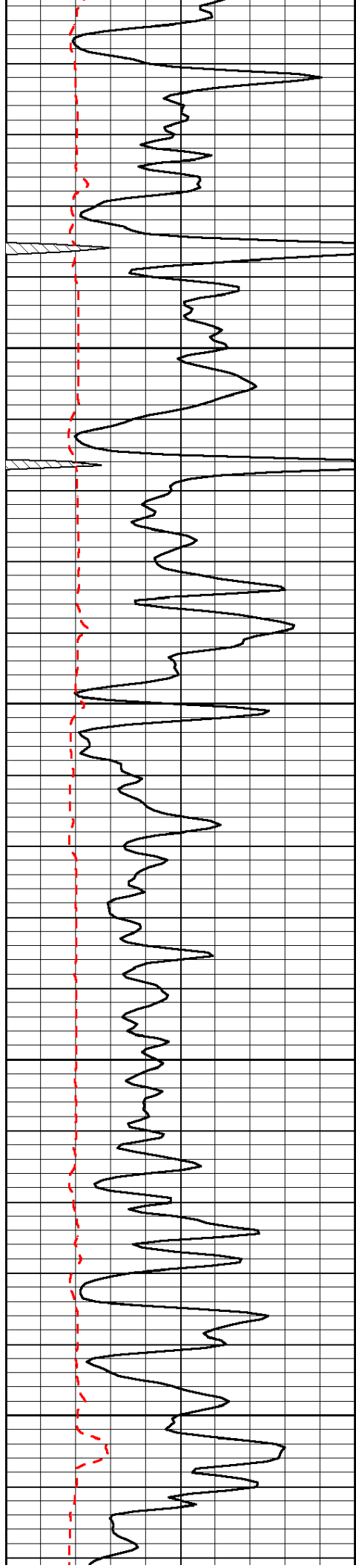




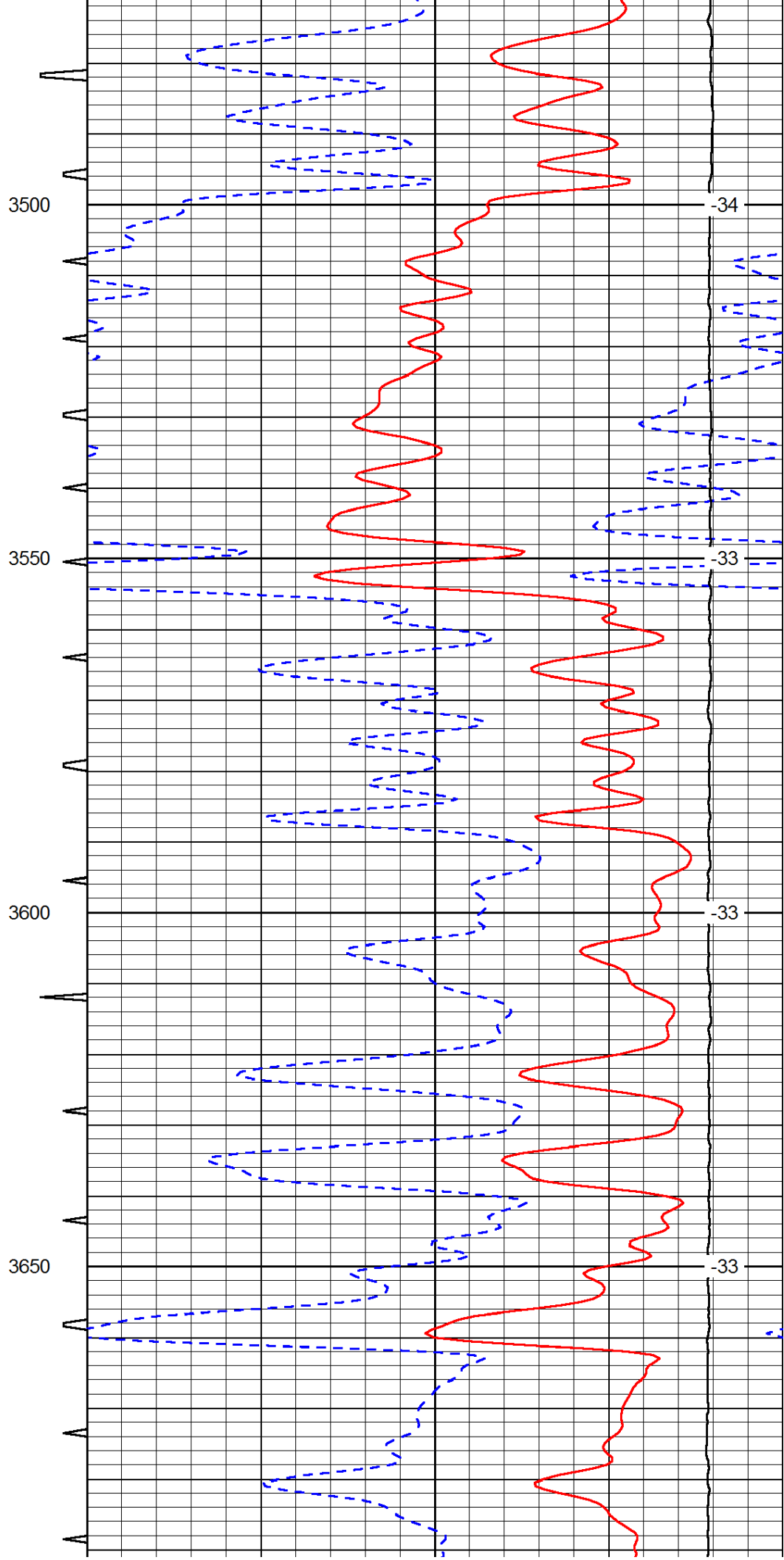
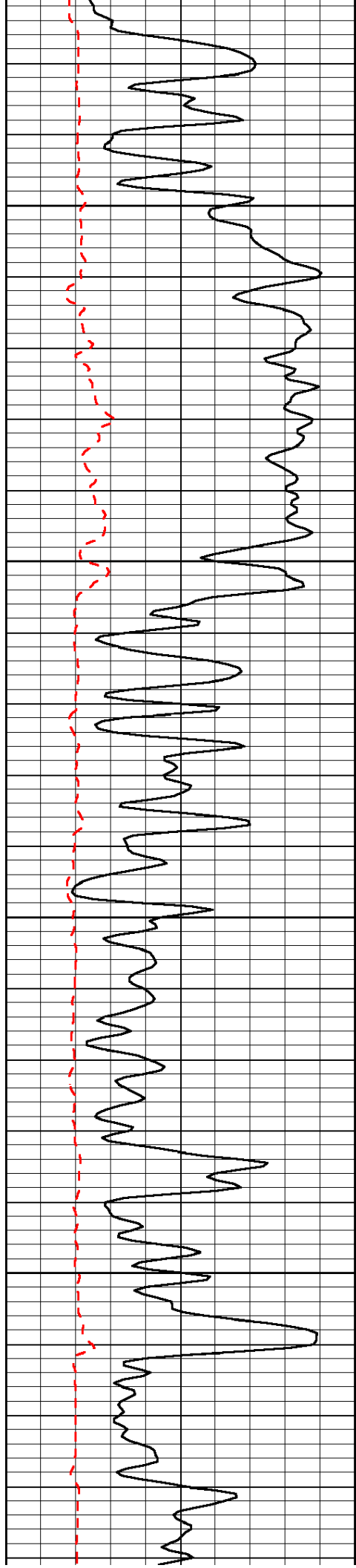


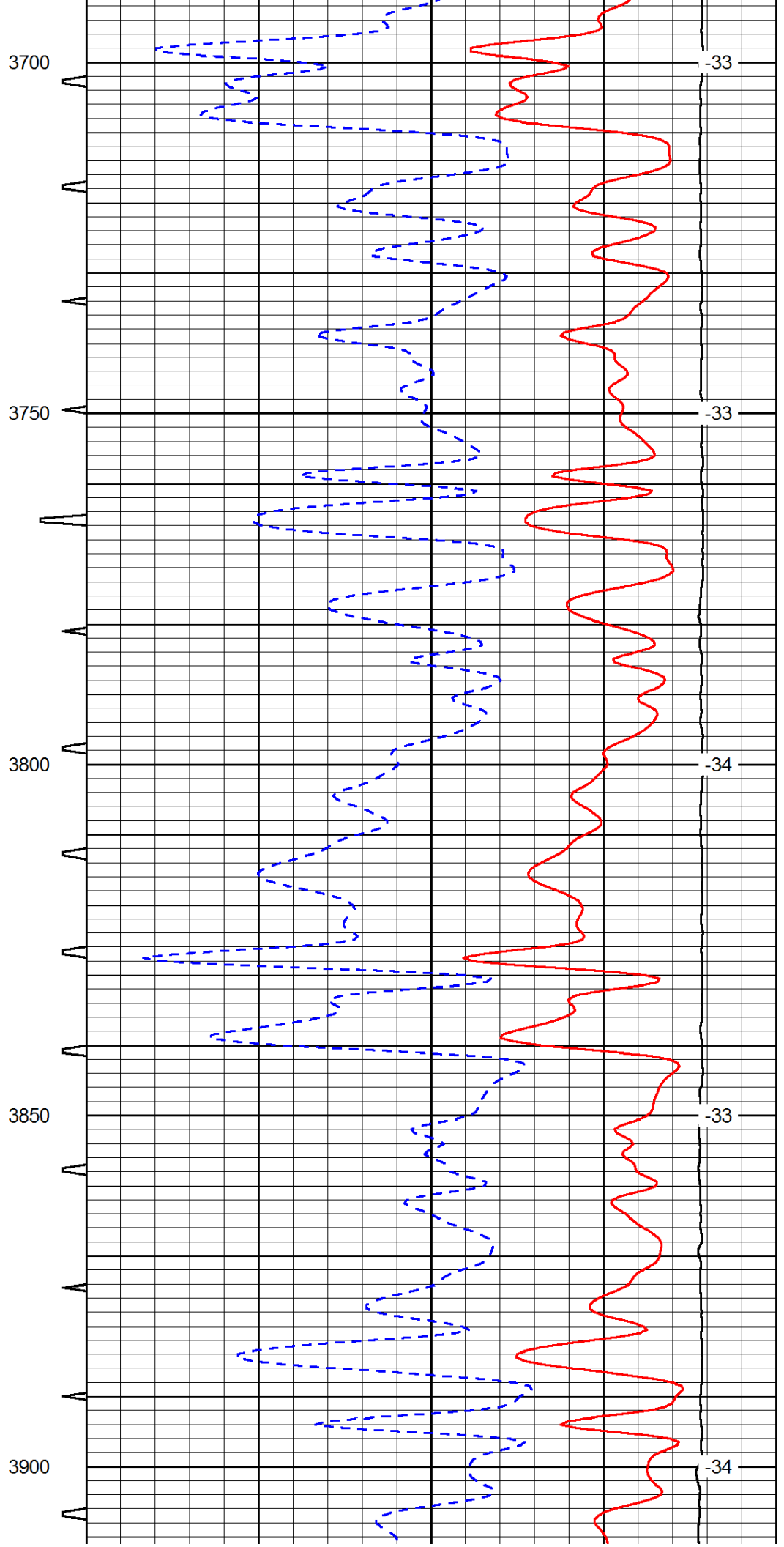
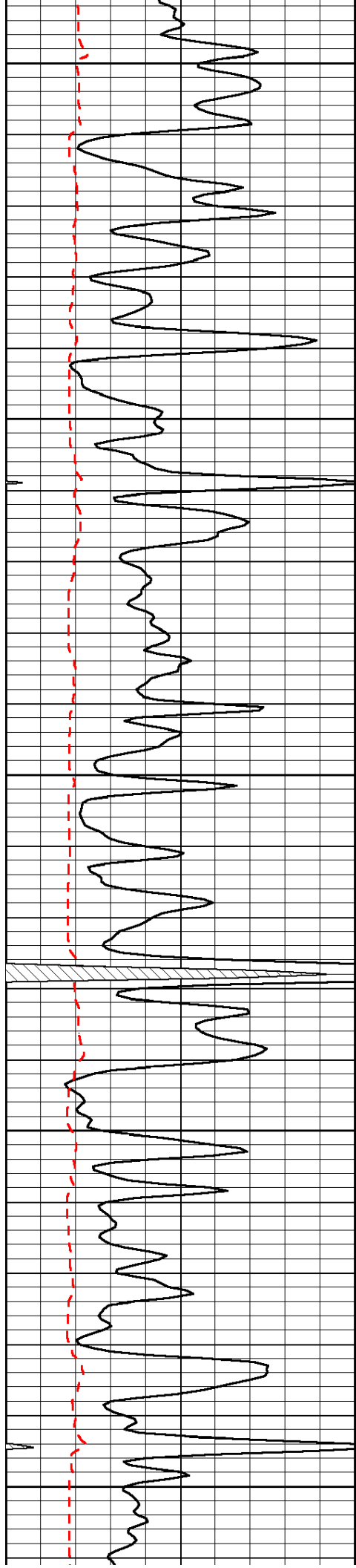


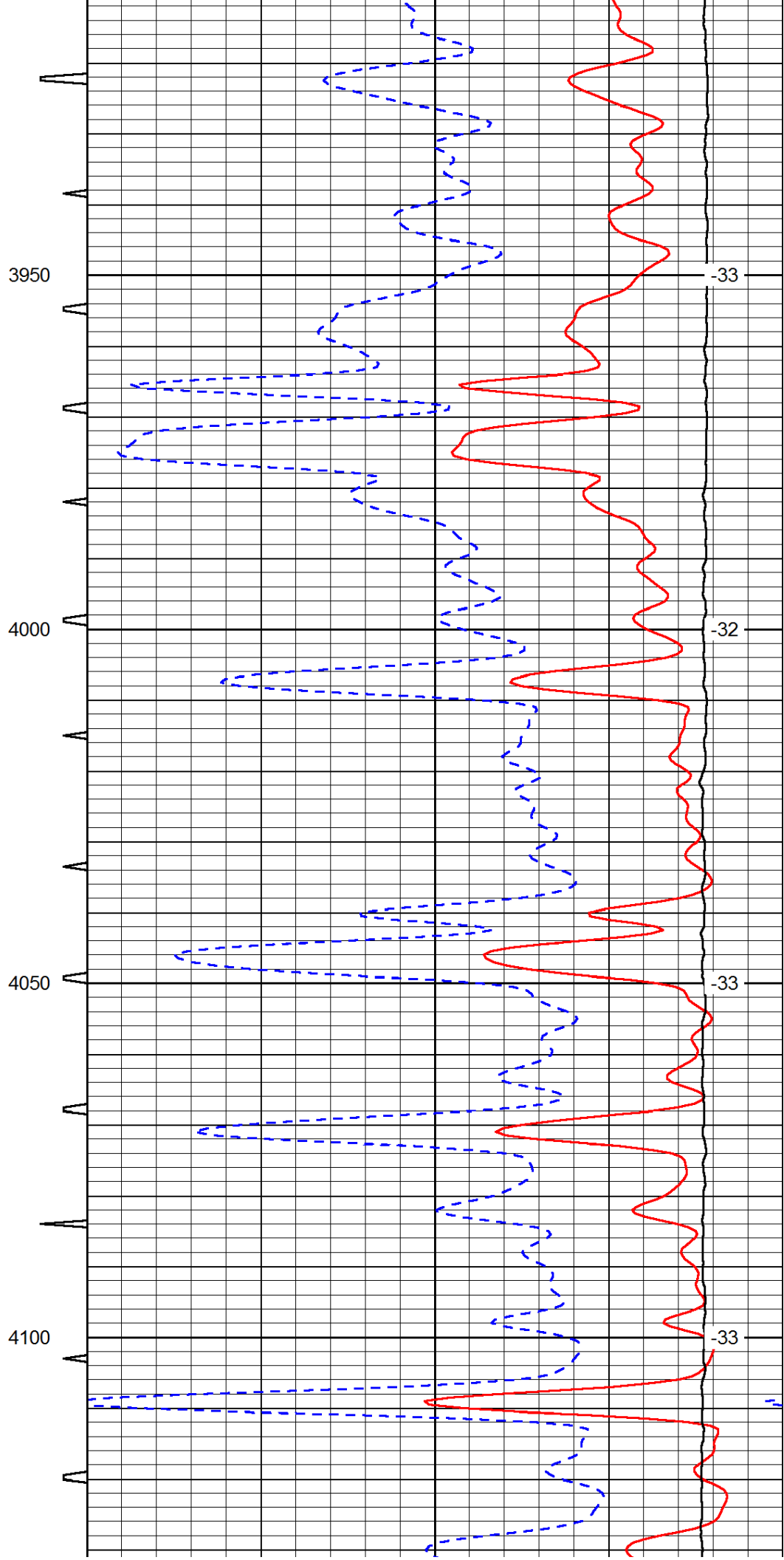
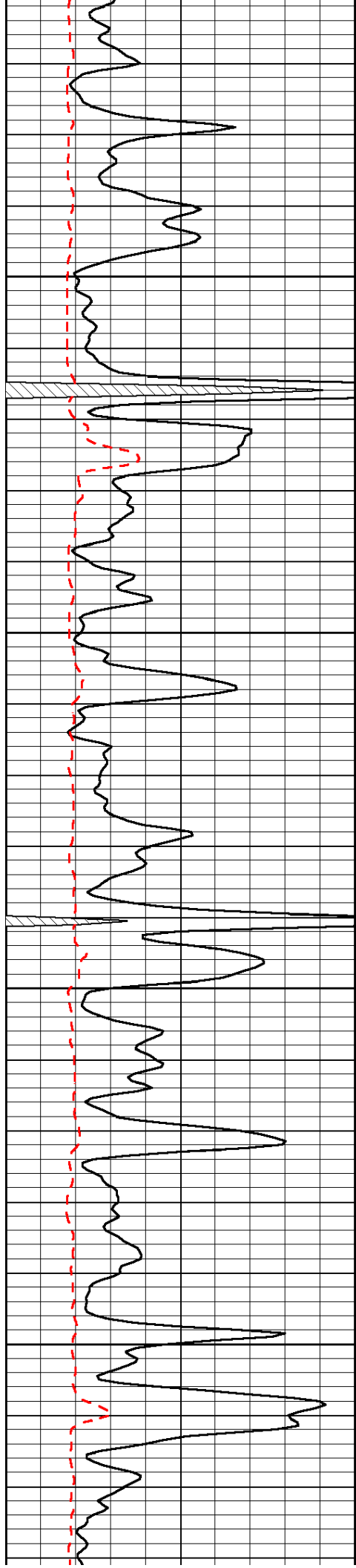


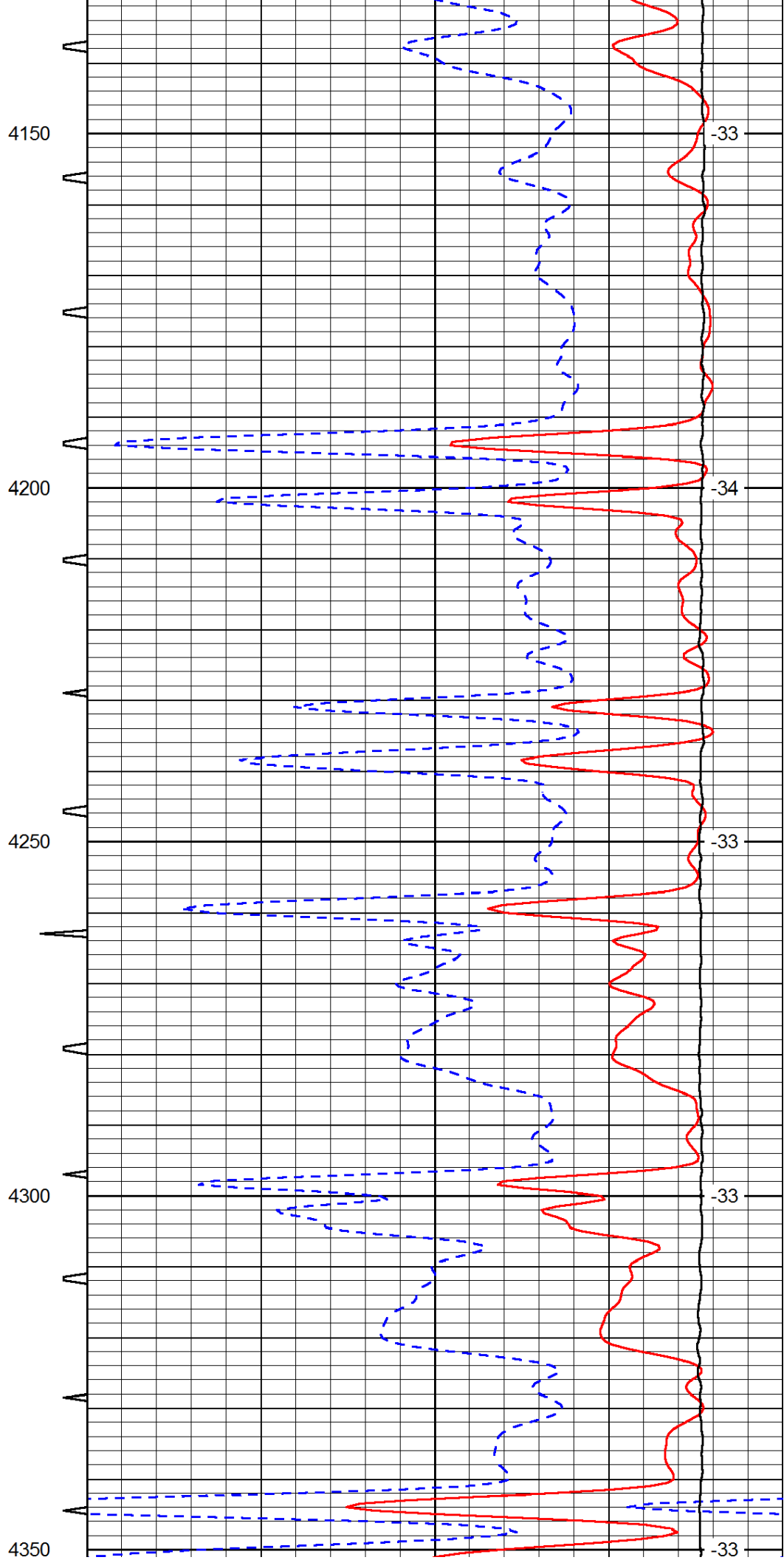
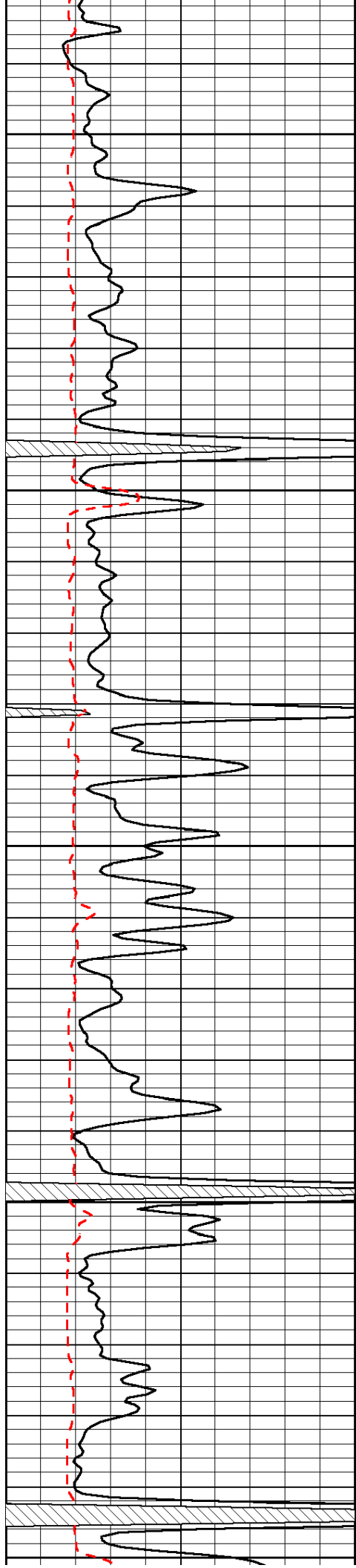


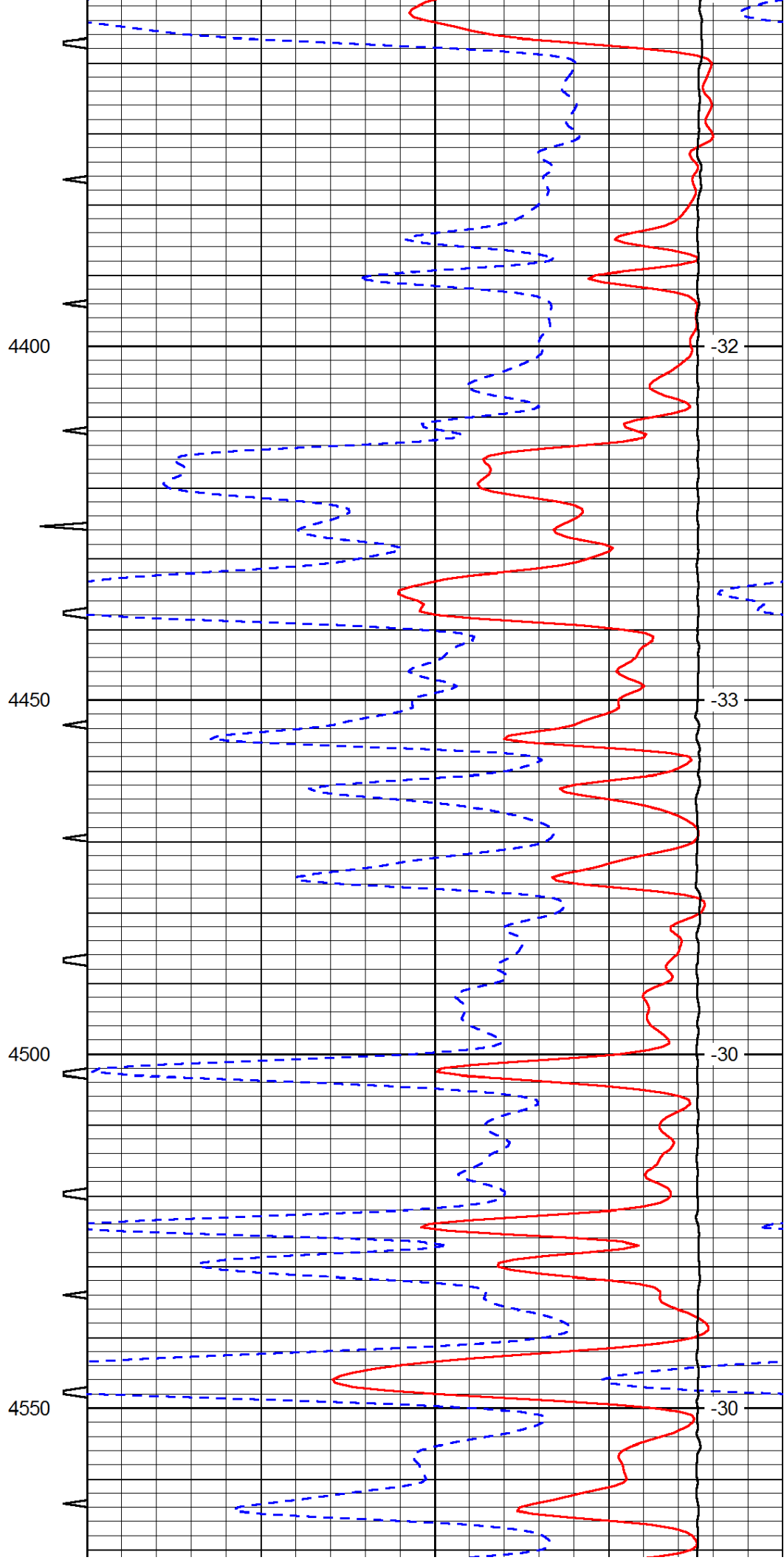
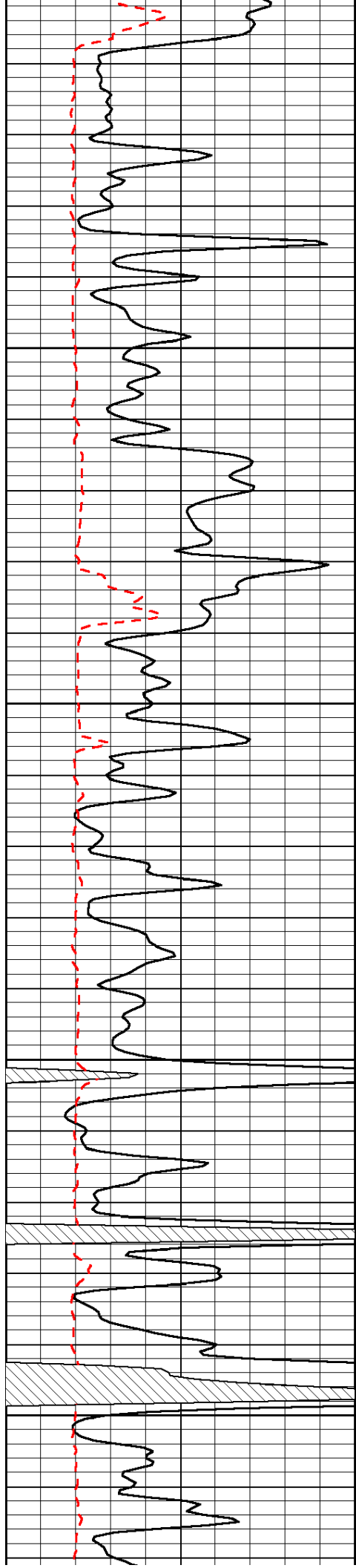


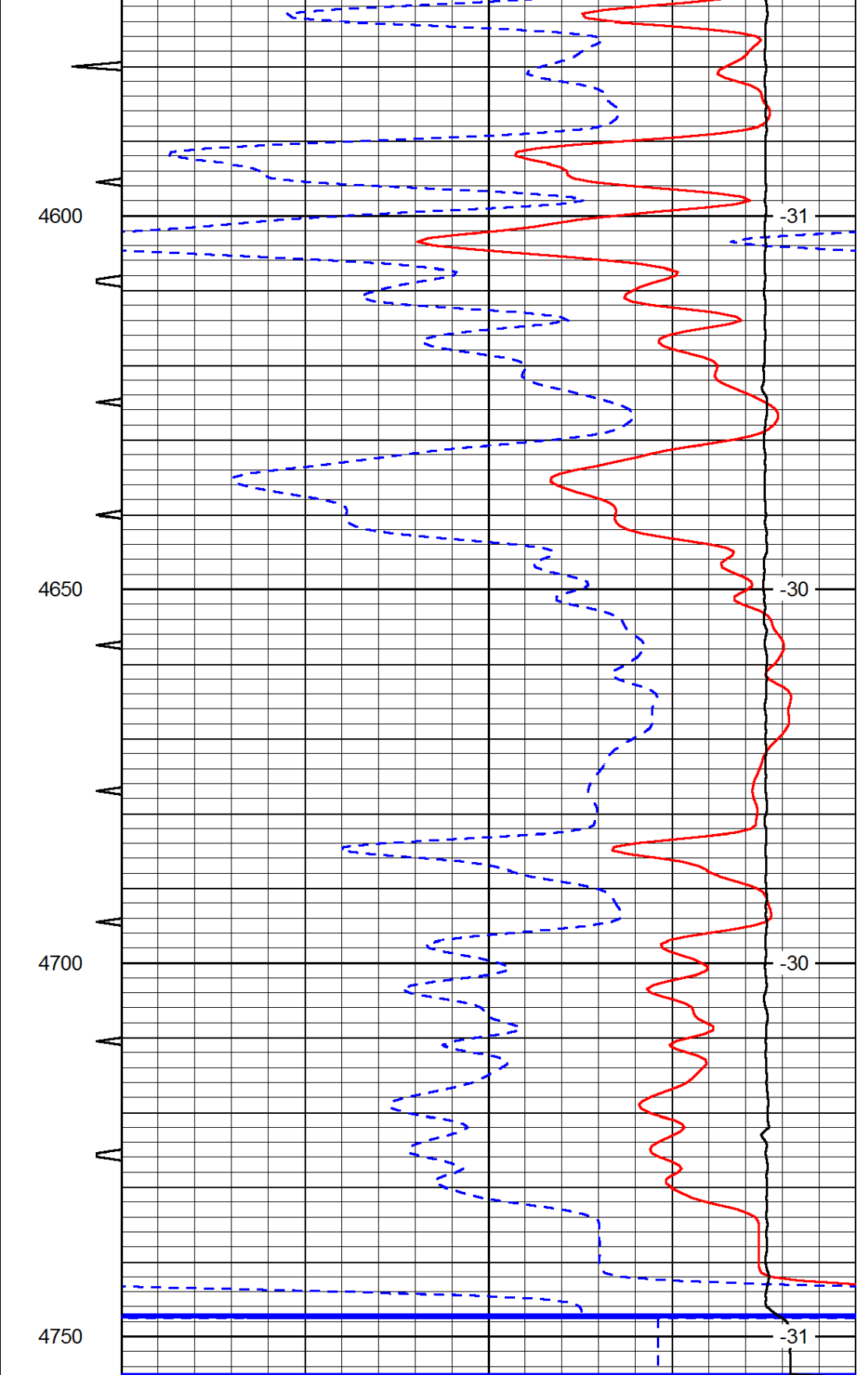
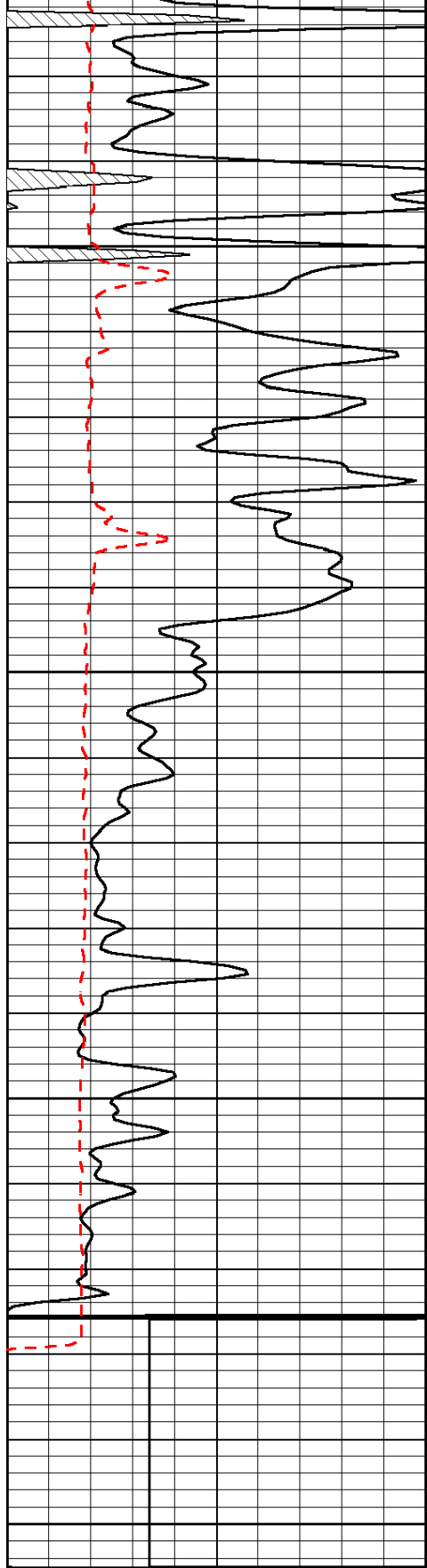












0	Gamma Ray	150	Sonic Int	140	Delta Time (usec/ft)	40
150	Gamma Ray	300	5	0	SPOR	-10
6	Caliper (GAPI)	16		15000	LTEN (lb)	0
LSPD						