



DIGITAL LOG (785) 625-3858

Dual Induction Log

15-101-22,382-00-00

API No.

Company Carmen Schmitt, Inc.

Well Frontier Unit No. 1

Field Wildcat

County Lane State

Kansas

Location

NE NE NE NE
100' FNL & 100' FEL

Other Services
CNL/CDL
MEL/BHCS

Sec: 1 Twp: 20S Rge: 30W

Permanent Datum Ground Level Elevation 2886

Log Measured From Kelly Bushing 12 Ft. Above Perm. Datum

K.B. 2898
D.F.
G.L. 2886

Drilling Measured From Kelly Bushing

Date 7/10/2012

Elevation

Run Number One

Depth Driller 4750

Depth Logger 4747

Bottom Logged Interval 4746

Top Log Interval 200

Casing Driller 8.625 @ 222

Casing Logger 222

Bit Size 7.875

Type Fluid in Hole Chemical

Salinity, ppm CL 2700

Density / Viscosity 9.1 32

pH / Fluid Loss 9.0 11.2

Source of Sample Flowline

Rm @ Meas. Temp .87 @ 78

Rmf @ Meas. Temp .65 @ 78

Rmc @ Meas. Temp 1.17 @ 78

Source of Rmf / Rmc Charts

Rm @ BHT .55 @ 124

Operating Rig Time 5 Hours

Max Rec. Temp. F 124

Equipment Number 108

Location Hays

Recorded By J. Long

Witnessed By Vern Schrag

<<< Fold Here >>>

All interpretations are opinions based on inferences from electrical or other measurements and we cannot and do not guarantee the accuracy or correctness of any interpretation, and we shall not, except in the case of gross or willful negligence on our part, be liable or responsible for any loss, costs, damages, or expenses incurred or sustained by anyone resulting from any interpretation made by any of our officers, agents or employees. These interpretations are also subject to our general terms and conditions set out in our current Price Schedule.

Comments

Thank you for using Log-Tech, Inc.
(785) 625-3858

Dighton, 9 South to 60 Road, 6 West, Southwest Into

Database File: c:\warrior\data\carmen schmitt_frontier unit no. 1\carmenschmitt_frontier_1hd.db
Dataset Pathname: dil/carmstck
Presentation Format: dil2in
Dataset Creation: Tue Jul 10 11:01:53 2012
Charted by: Depth in Feet scaled 1:600

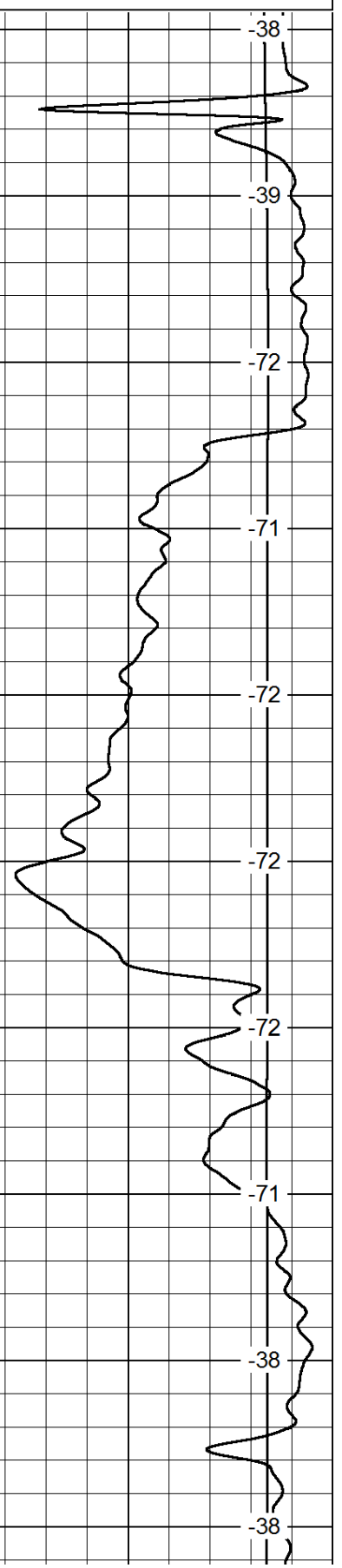
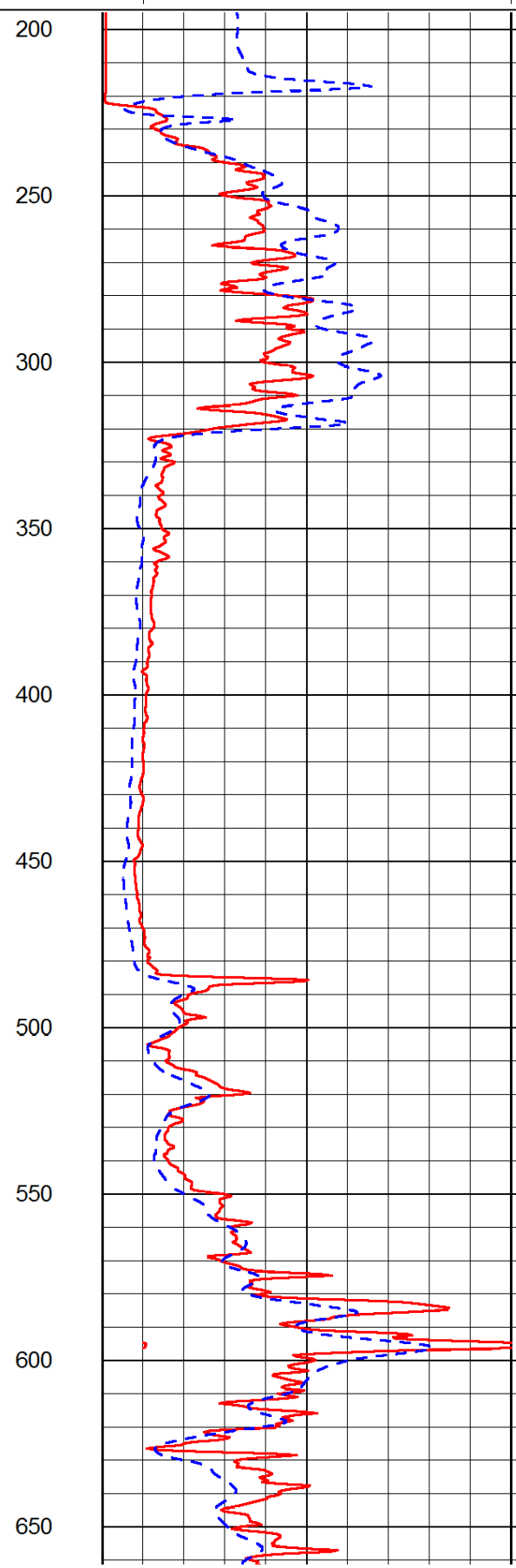
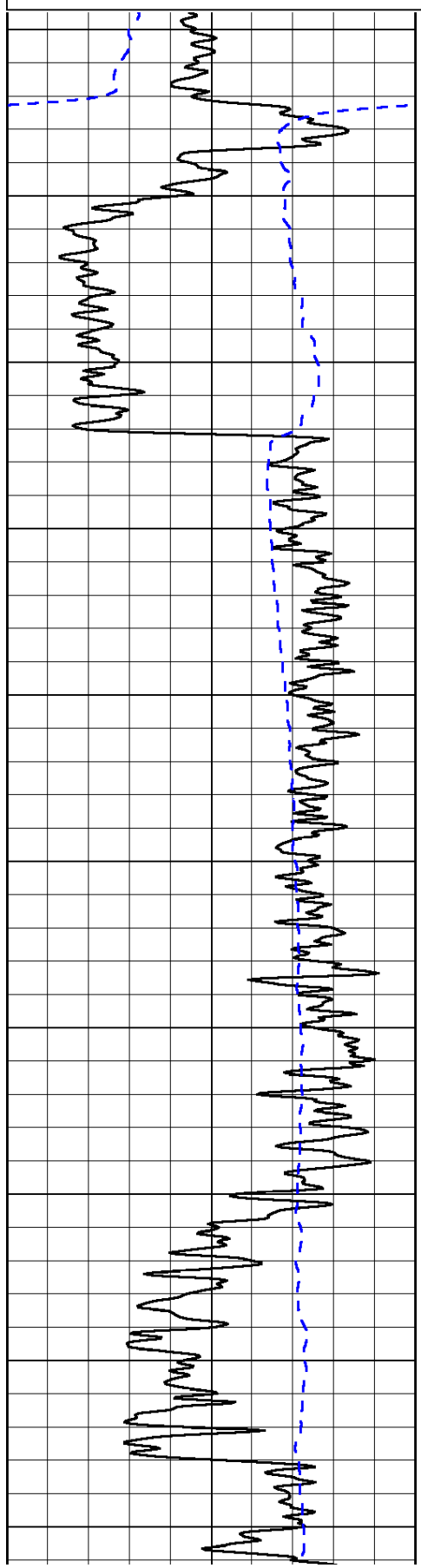
0	Gamma Ray	150
-200	SP (mV)	0

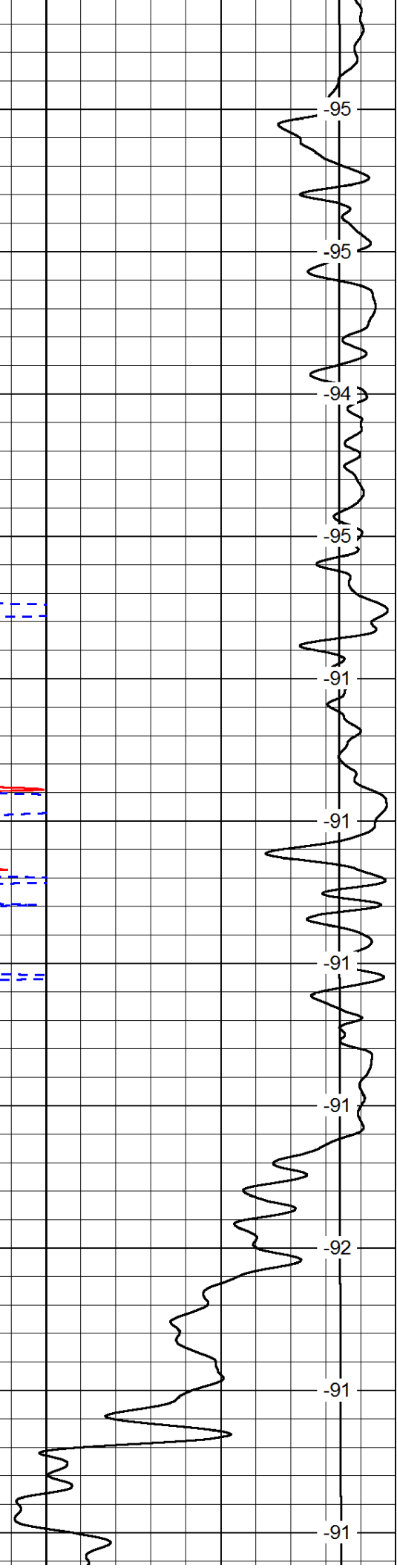
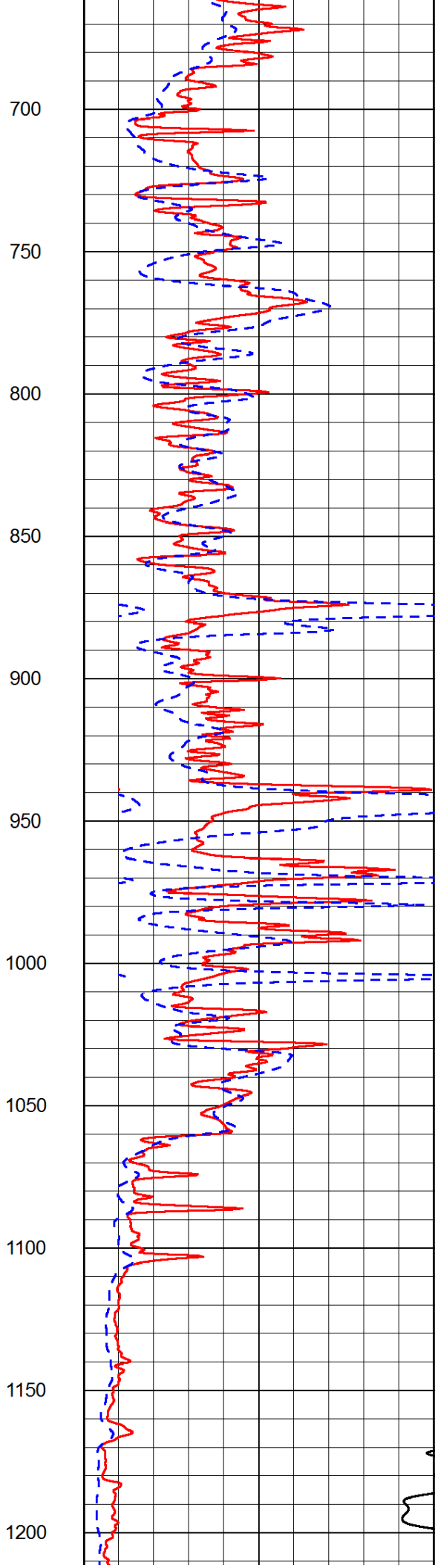
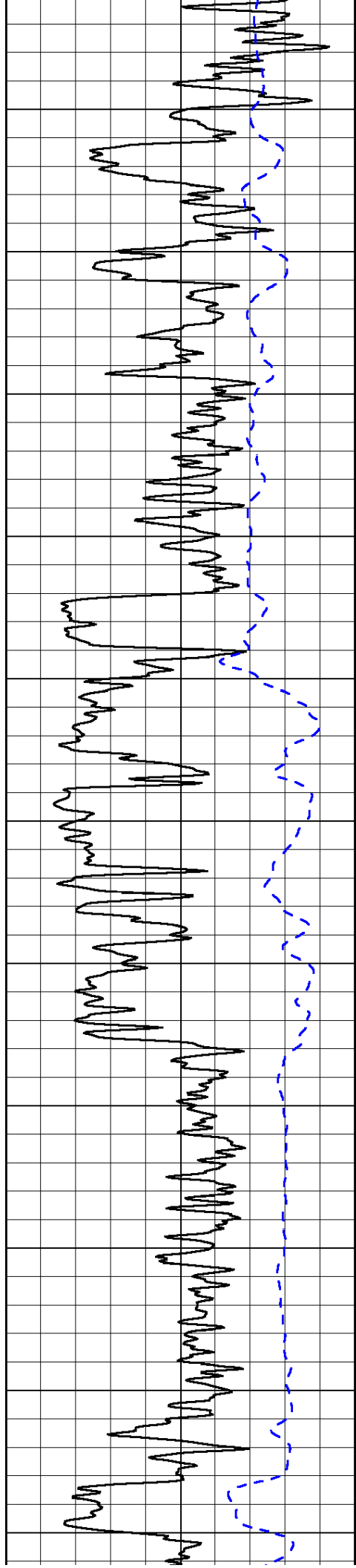
0	Shallow Resistivity	50
0	Deep Resistivity	50

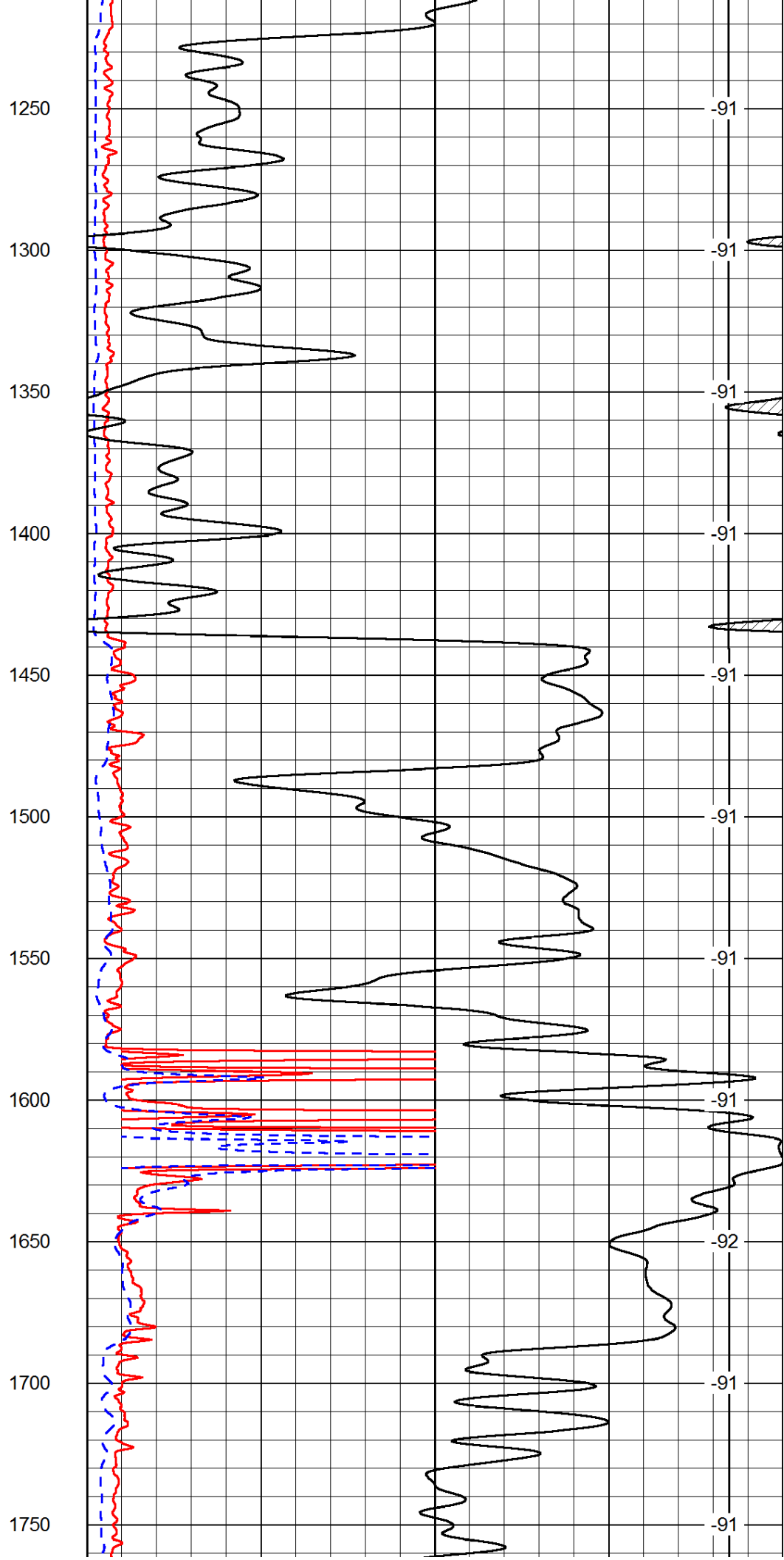
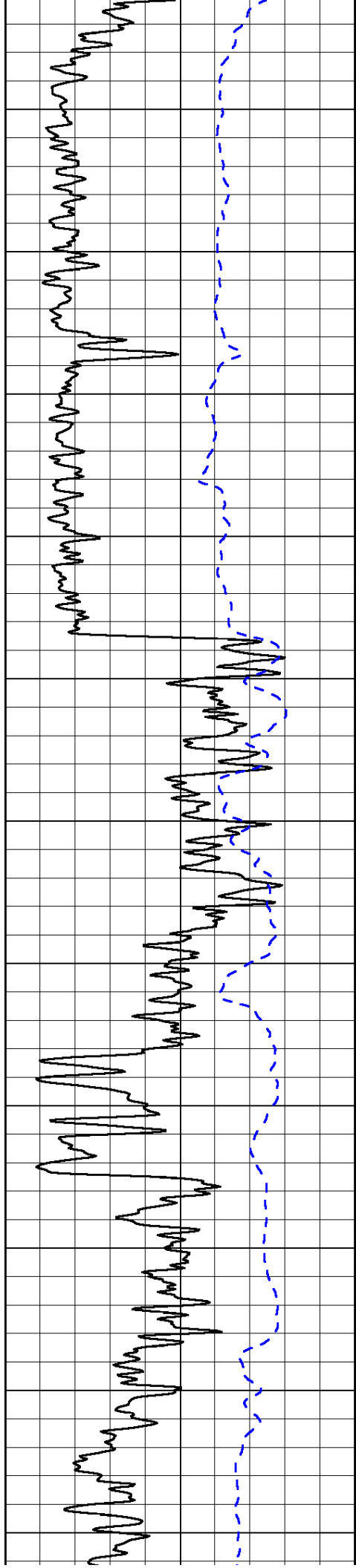
LSPD

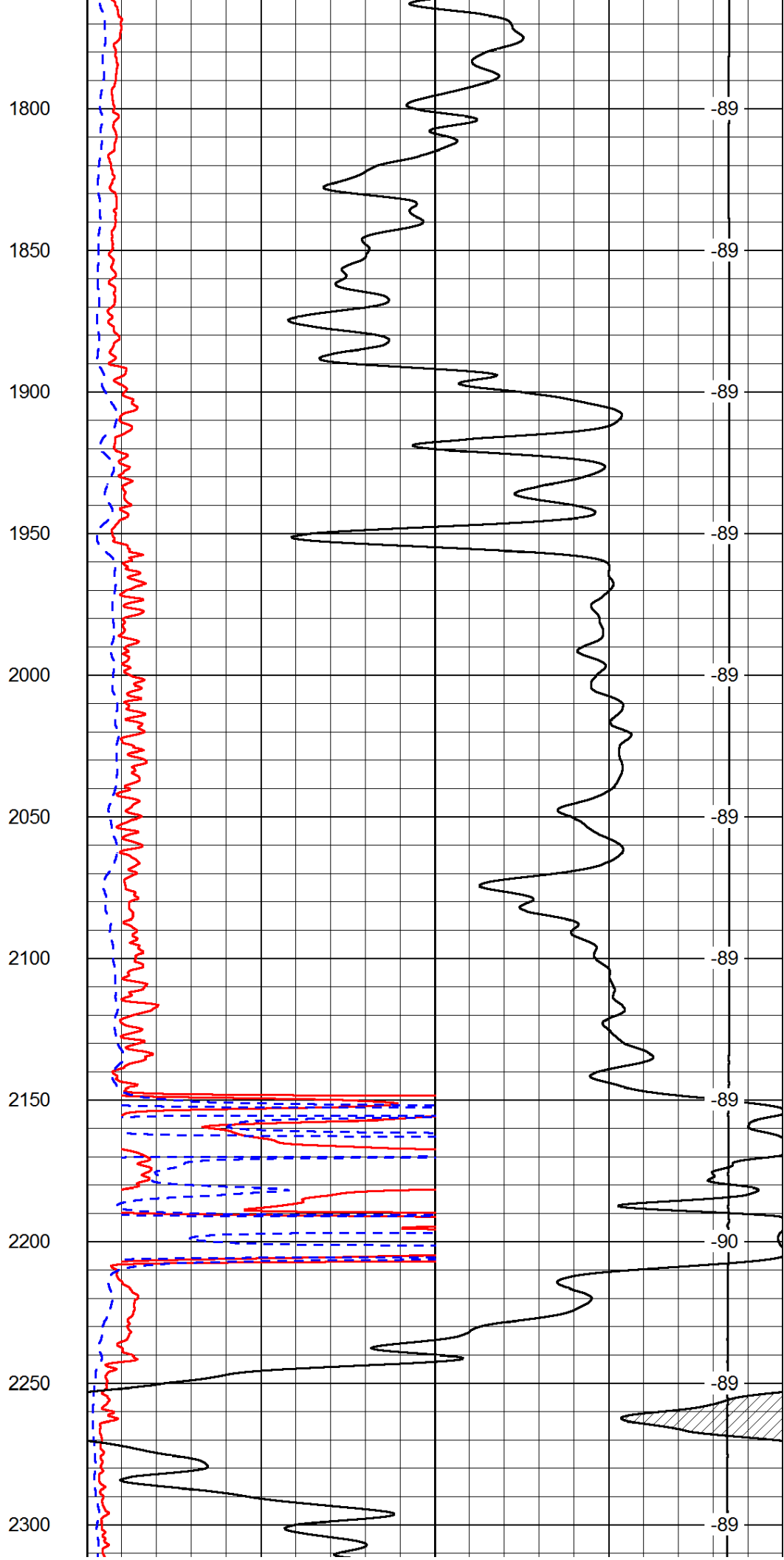
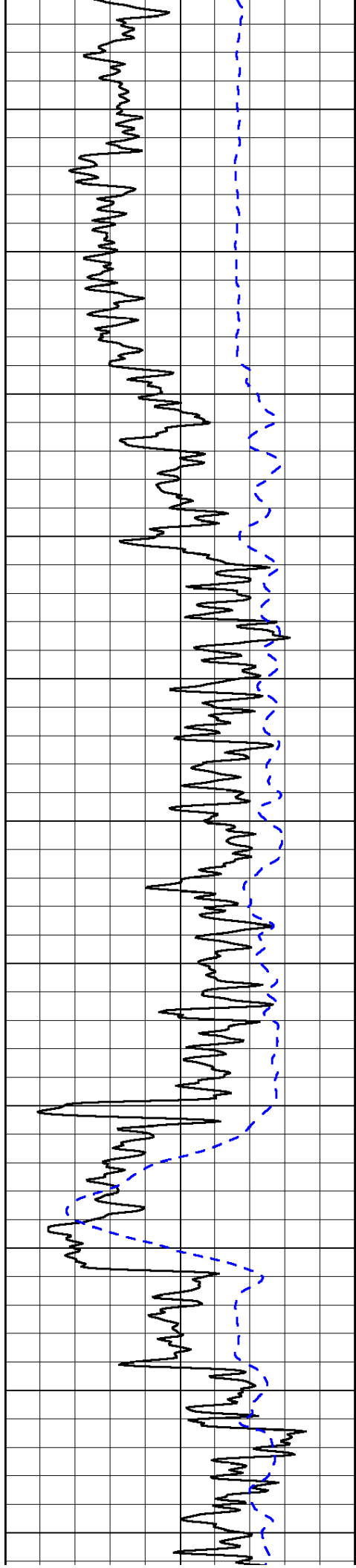
1000	Conductivity	0
15000	Line Tension	0

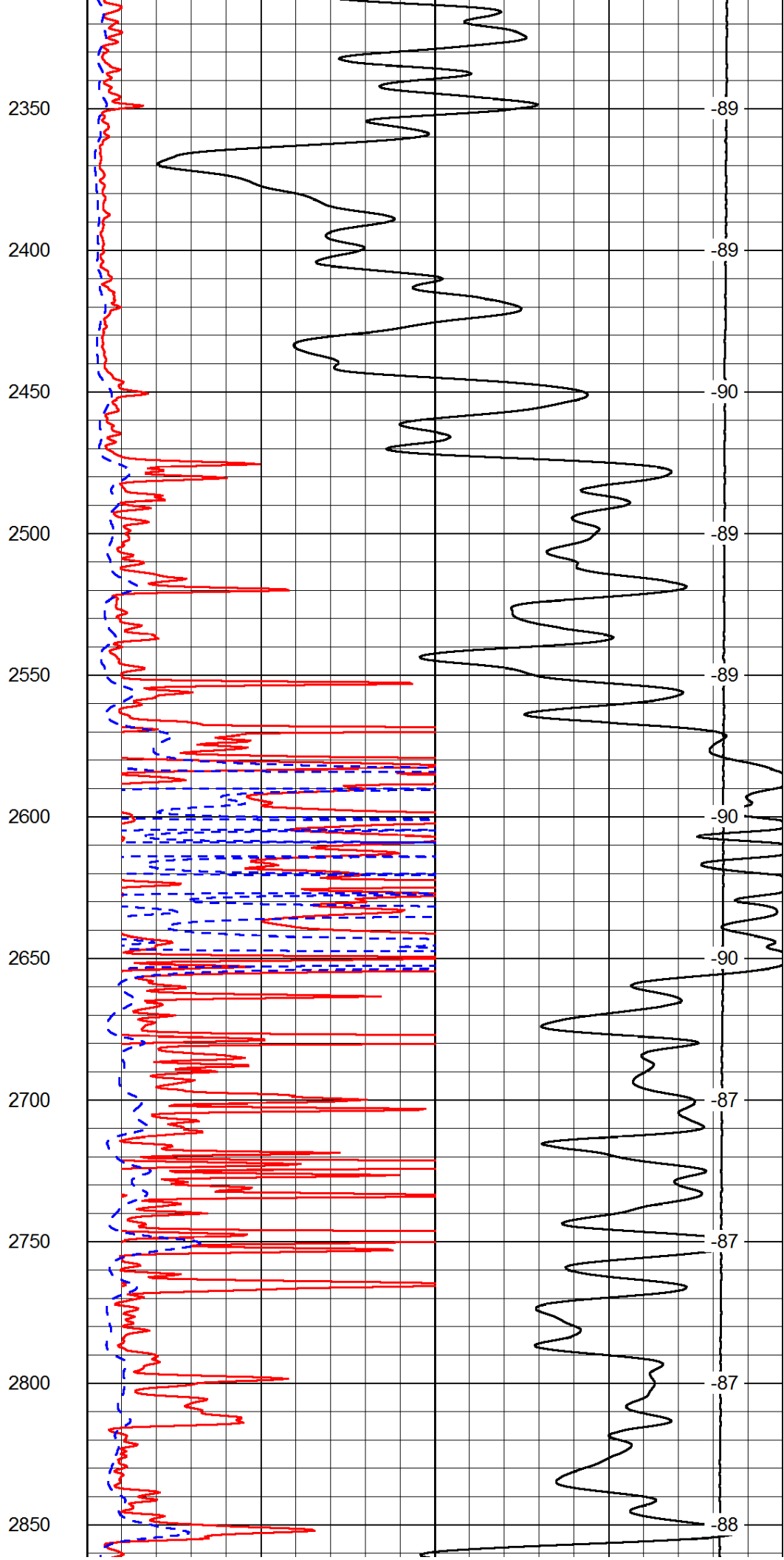
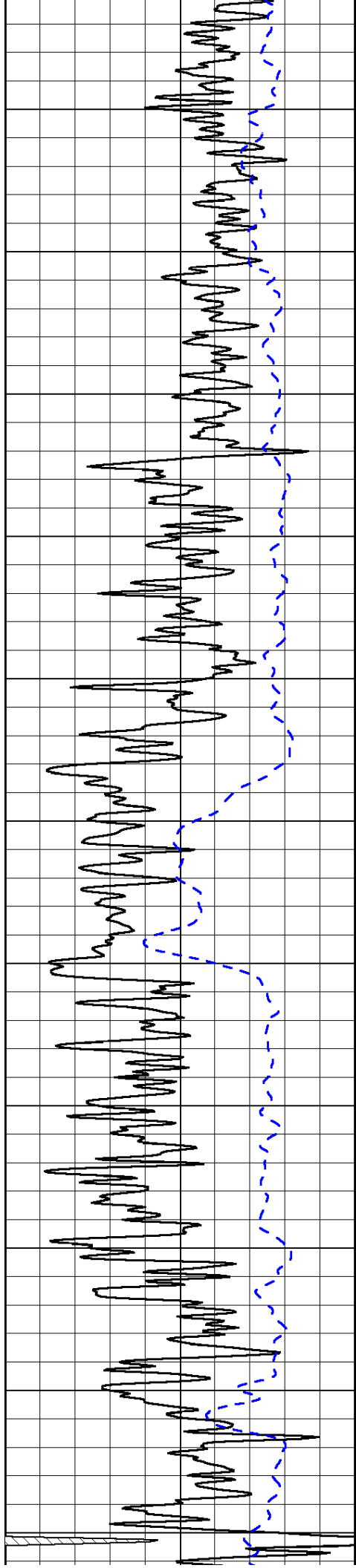
50	Shallow Resistivity	500
50	Deep Resistivity	500

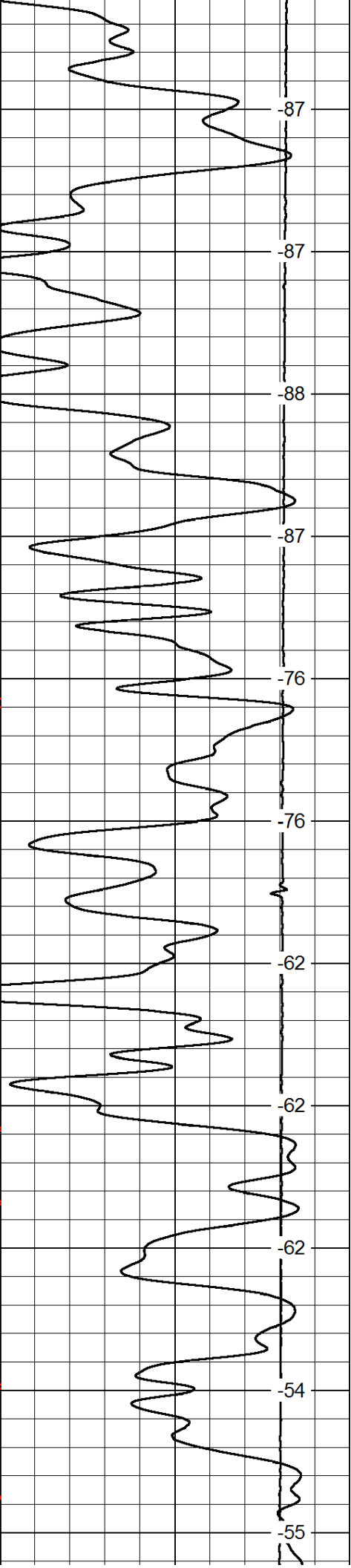
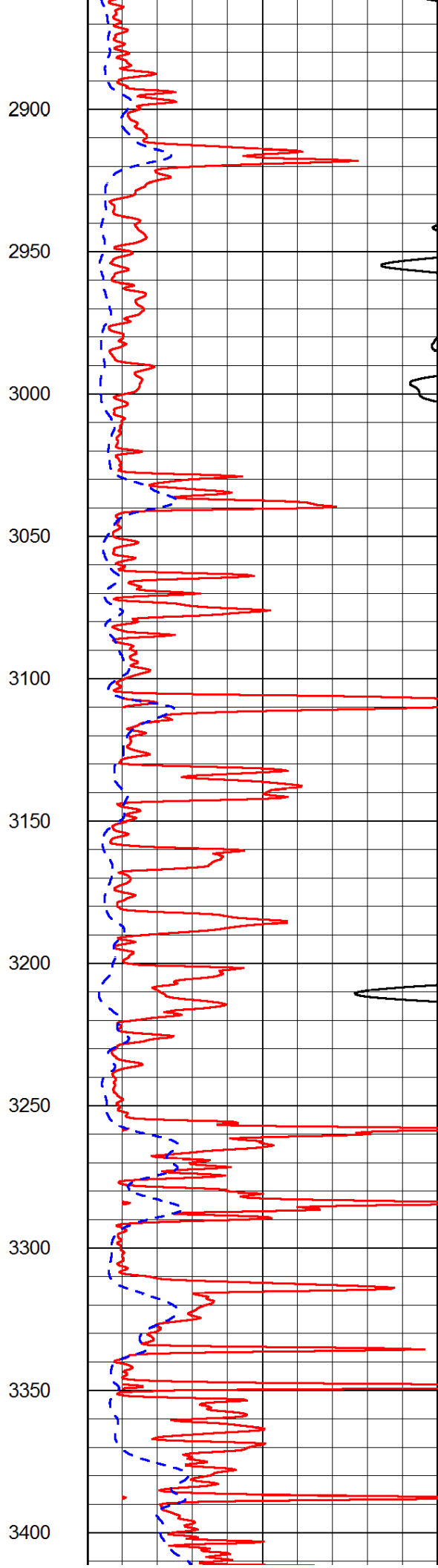
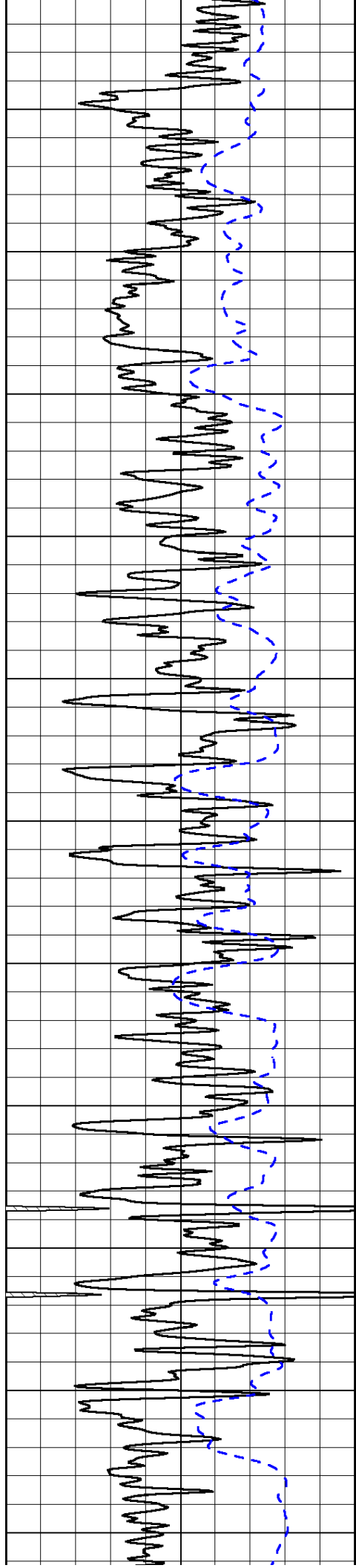


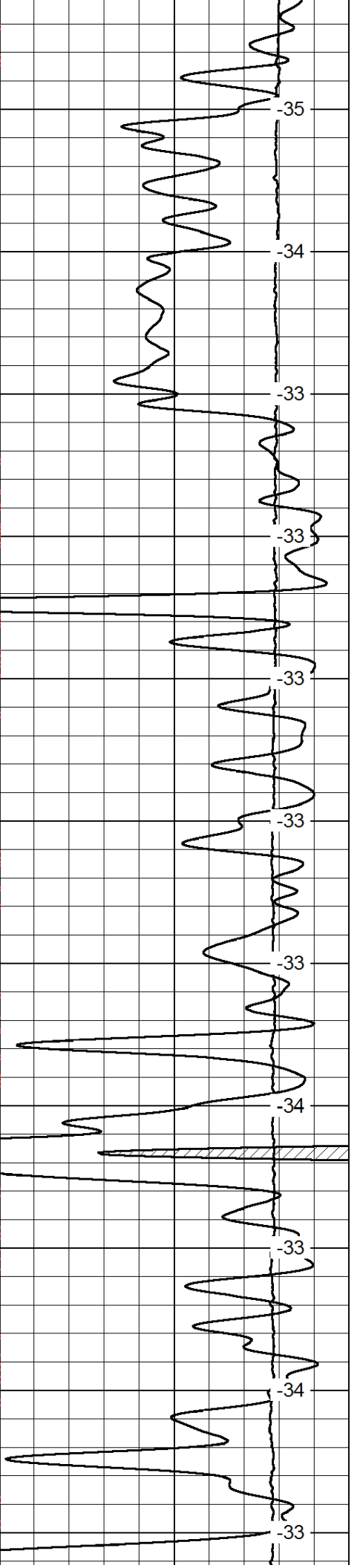
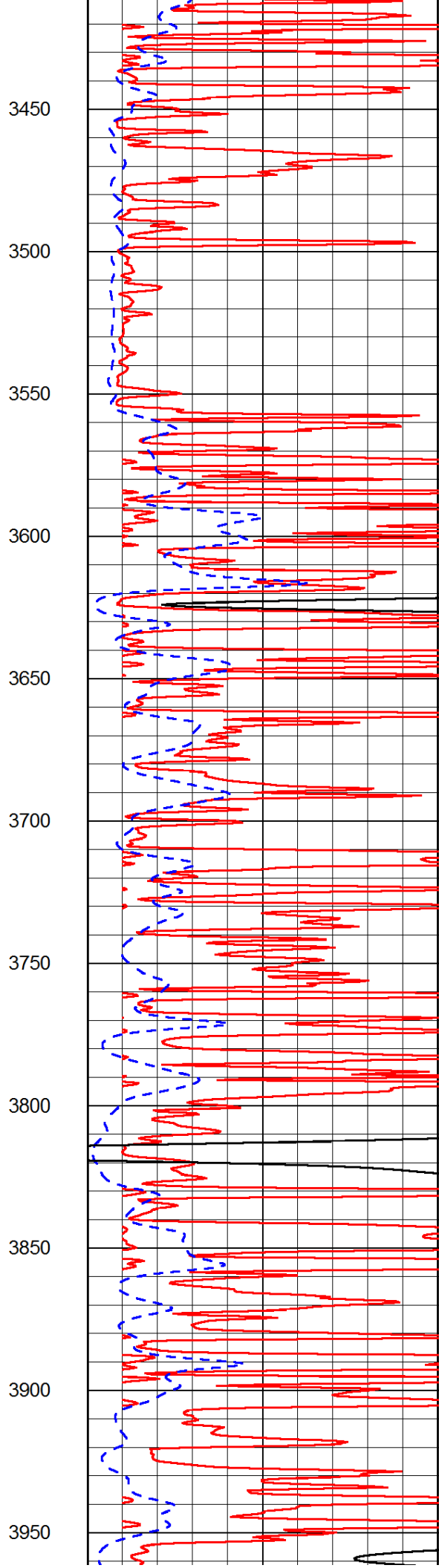
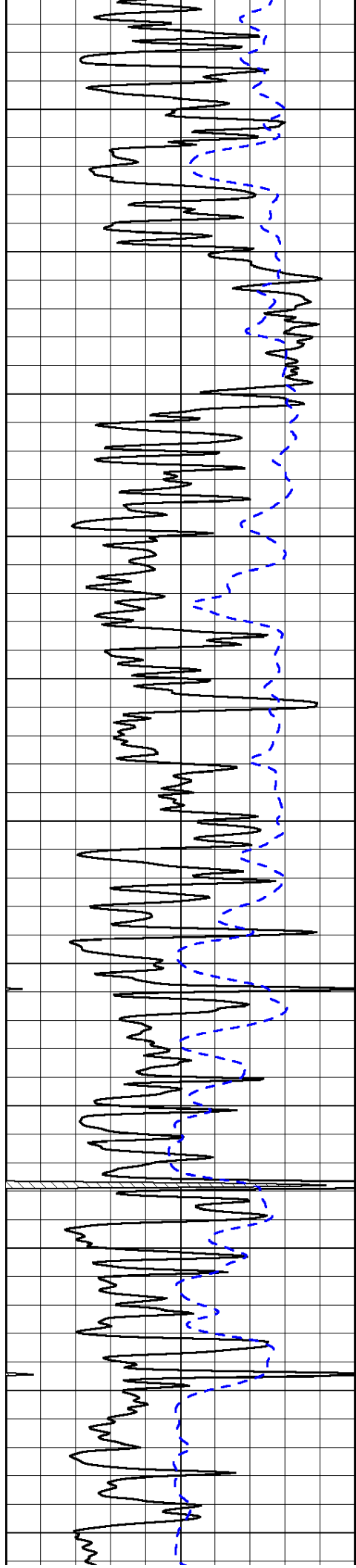


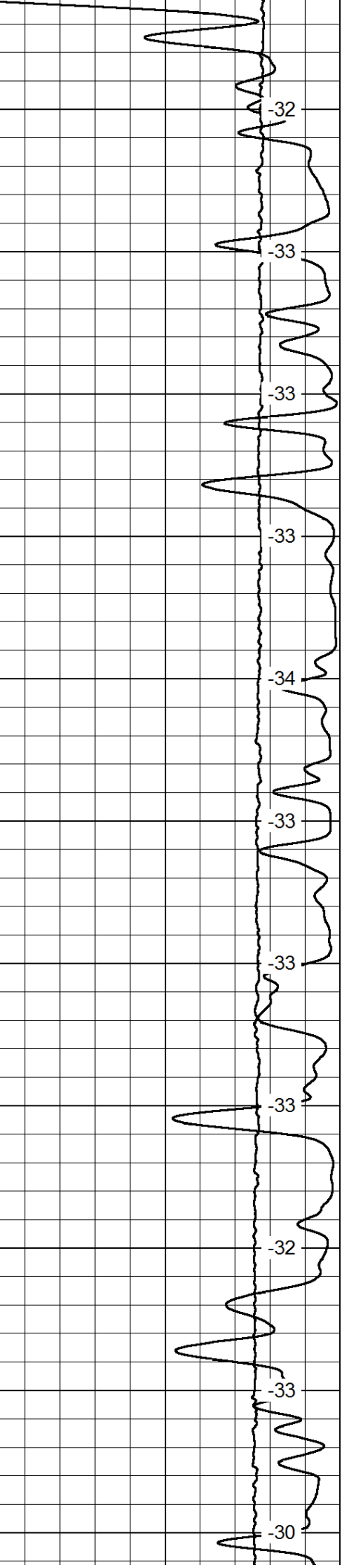
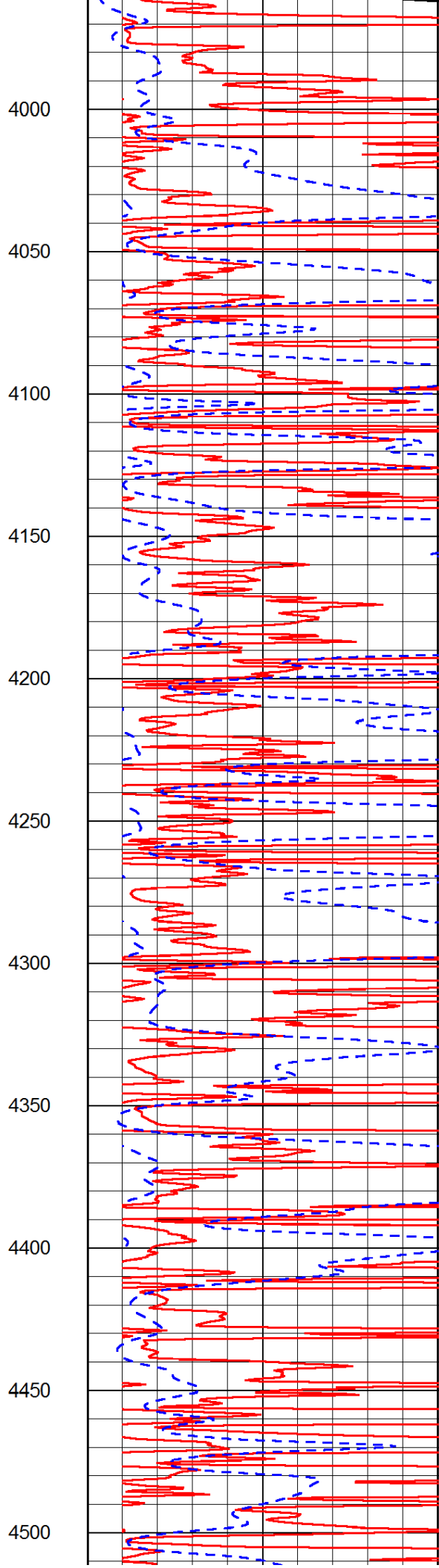
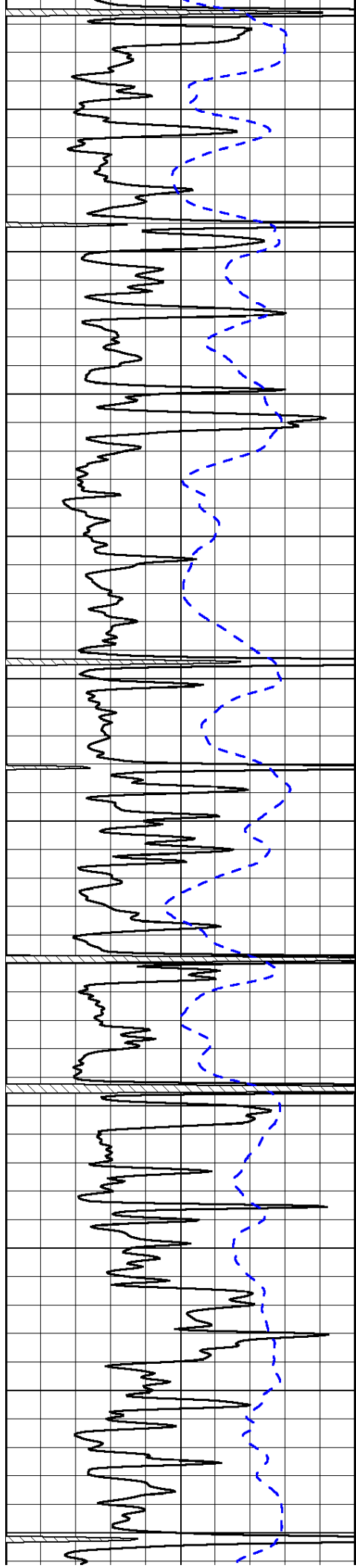


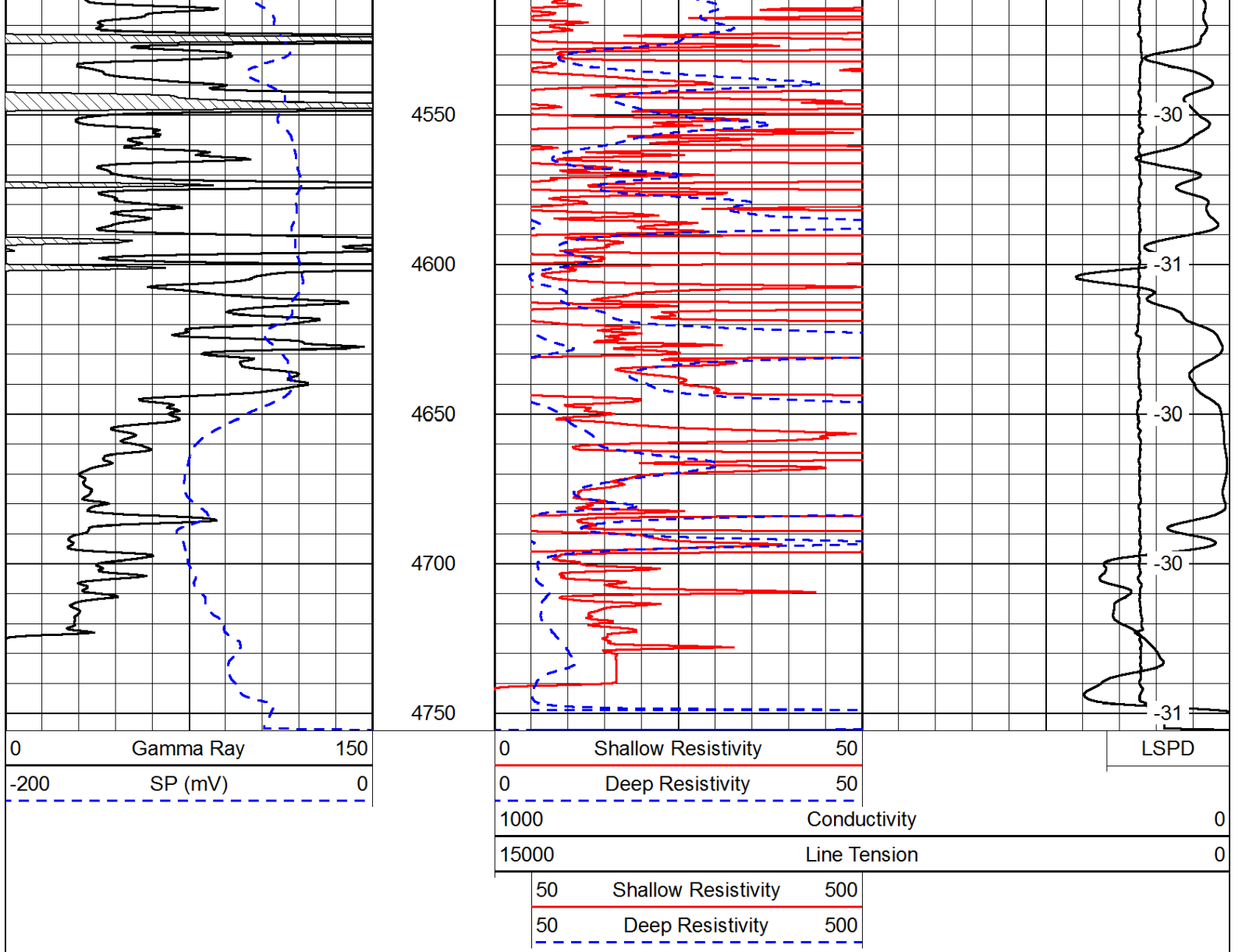




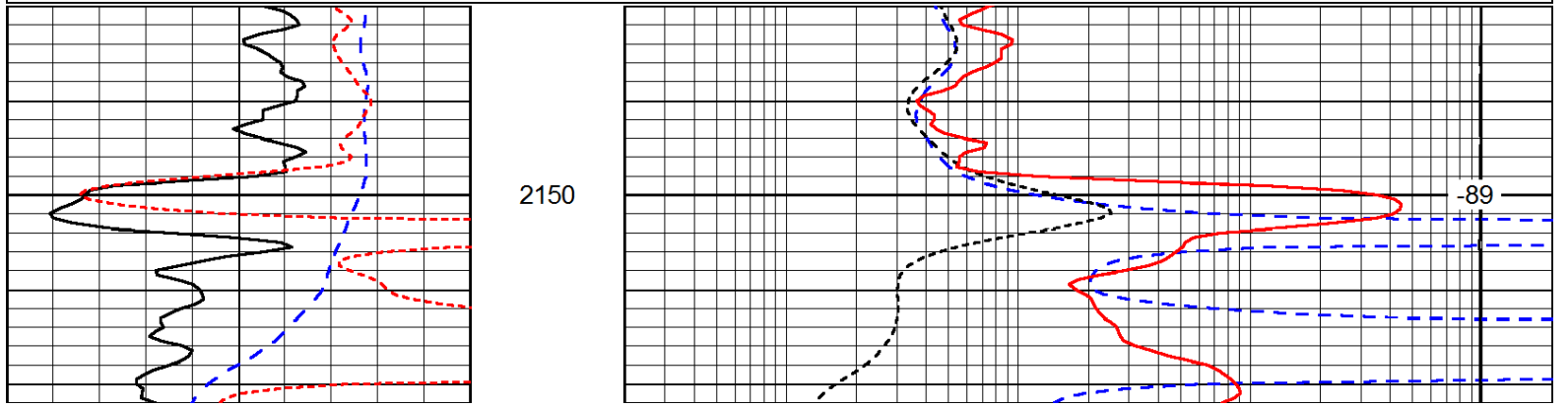
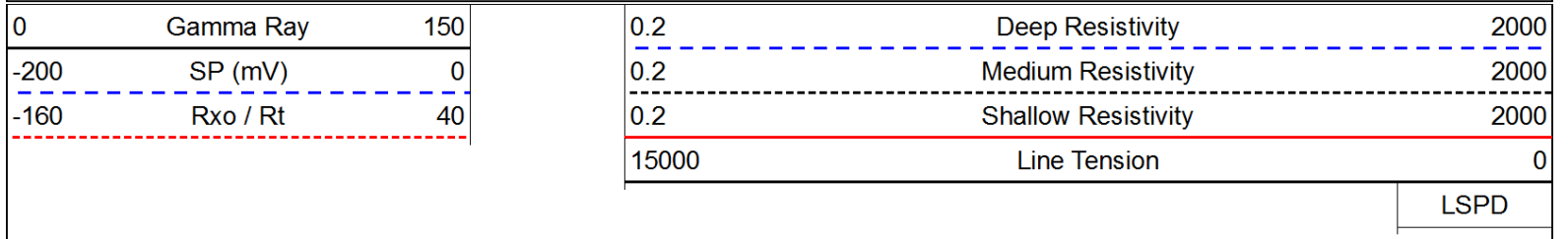


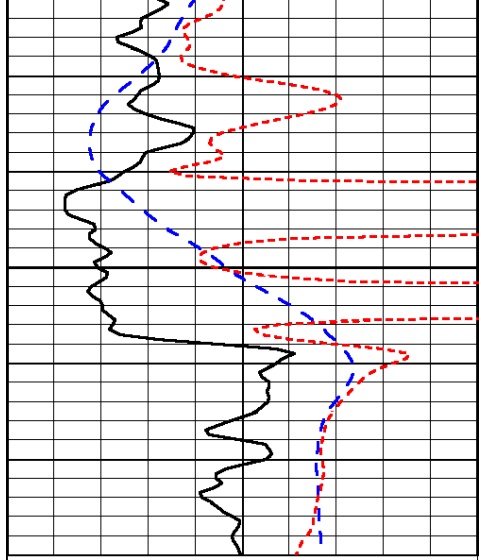






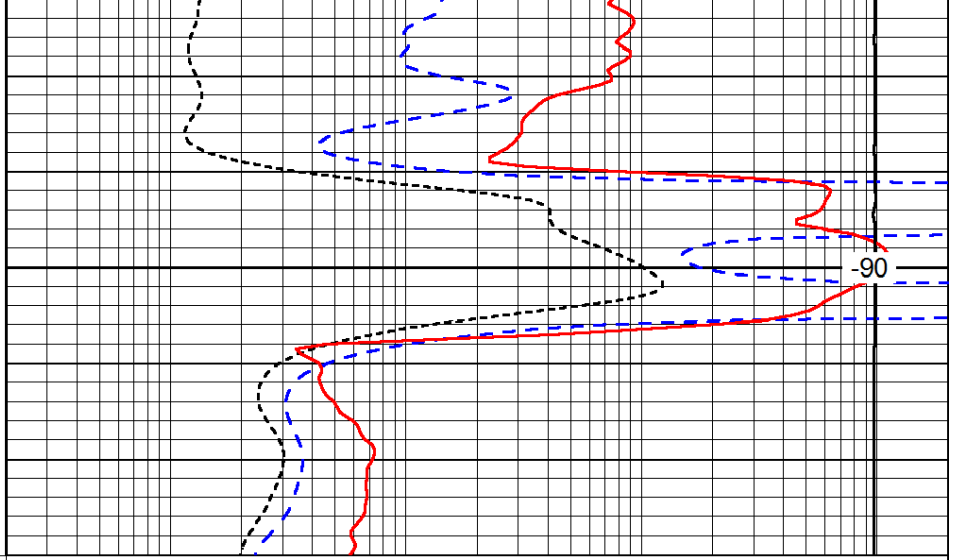
Database File: c:\warrior\data\carmen schmitt_frontier unit no. 1\carmenschmitt_frontier_1hd.db
 Dataset Pathname: dil/carmstck
 Presentation Format: dil
 Dataset Creation: Tue Jul 10 11:01:53 2012
 Charted by: Depth in Feet scaled 1:240





0	Gamma Ray	150
-200	SP (mV)	0
-160	Rxo / Rt	40

2200



0.2	Deep Resistivity	2000
0.2	Medium Resistivity	2000
0.2	Shallow Resistivity	2000
15000	Line Tension	0

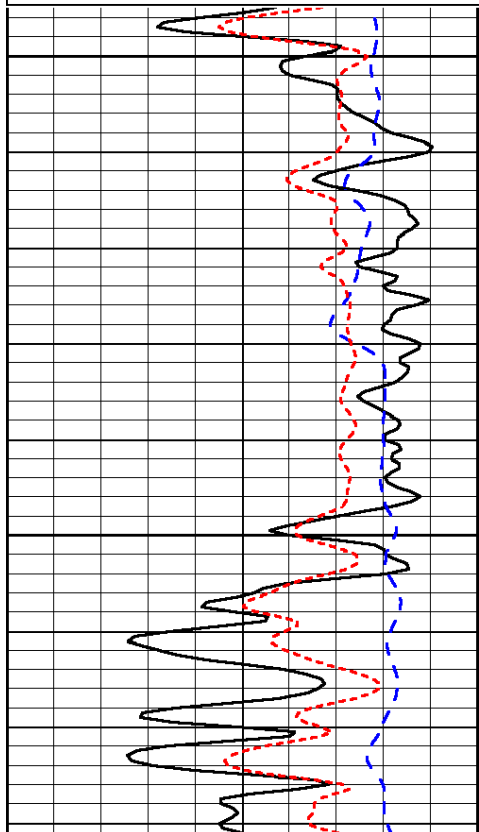
LSPD

Database File: c:\warrior\data\carmen schmitt_frontier unit no. 1\carmenschmitt_frontier_1hd.db
 Dataset Pathname: dil/carmstck
 Presentation Format: dil
 Dataset Creation: Tue Jul 10 11:01:53 2012
 Charted by: Depth in Feet scaled 1:240

0	Gamma Ray	150
-200	SP (mV)	0
-160	Rxo / Rt	40

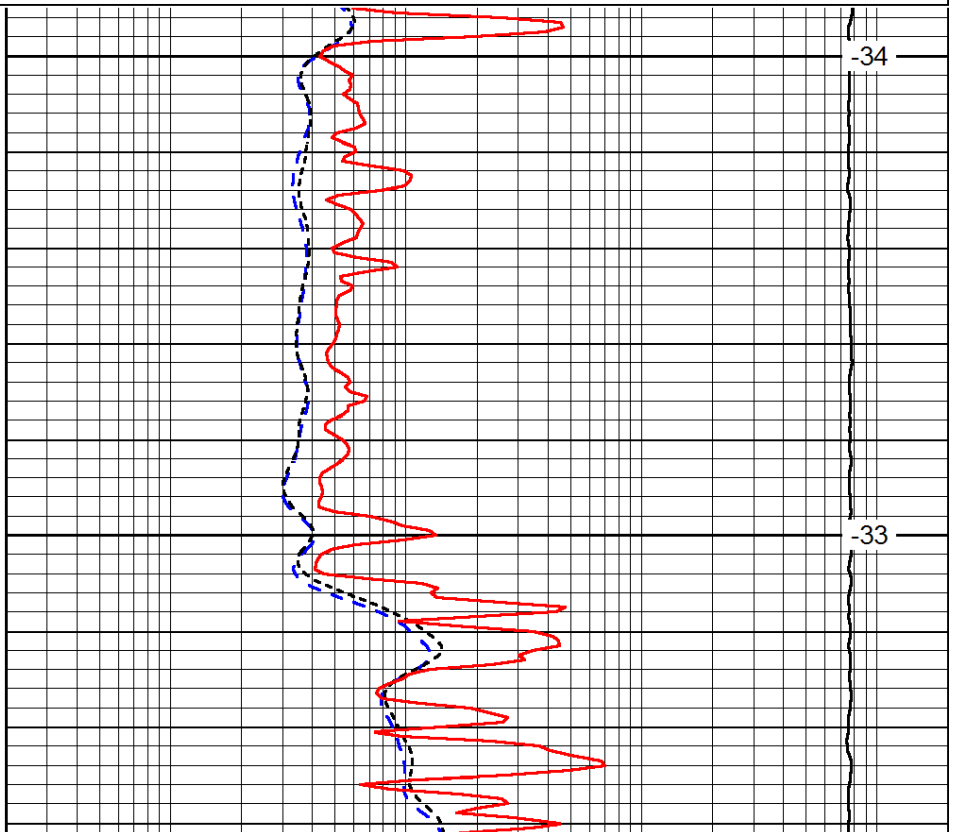
0.2	Deep Resistivity	2000
0.2	Medium Resistivity	2000
0.2	Shallow Resistivity	2000
15000	Line Tension	0

LSPD



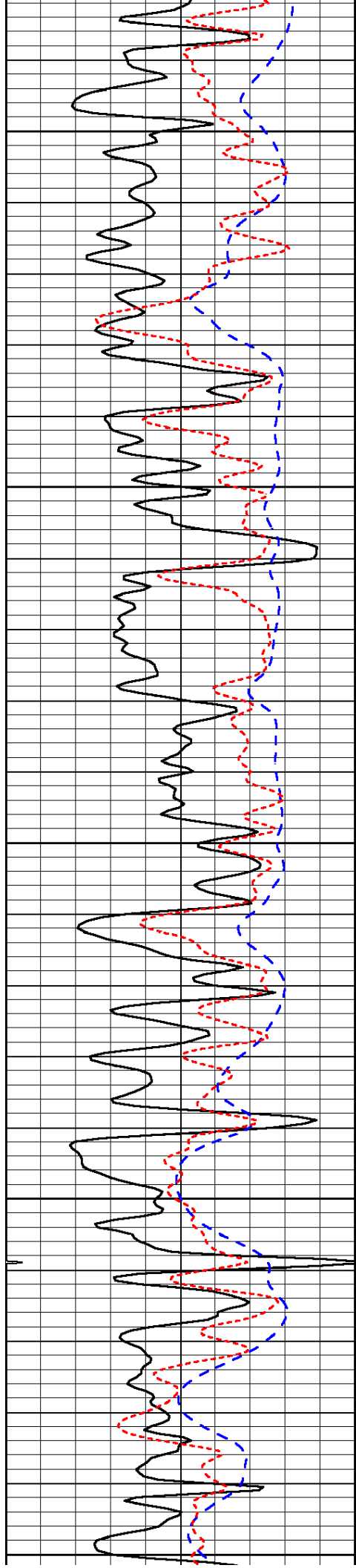
3500

3550



-34

-33



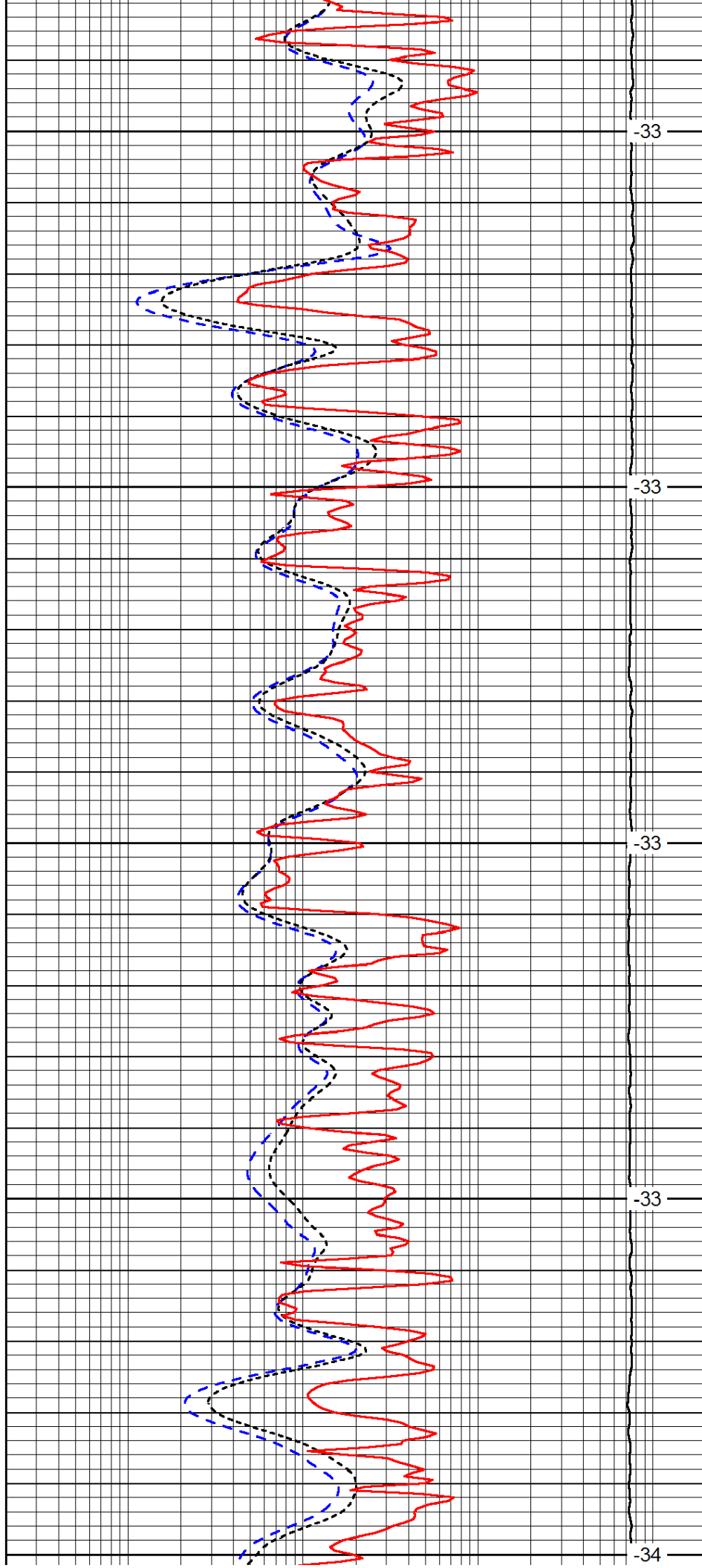
3600

3650

3700

3750

3800



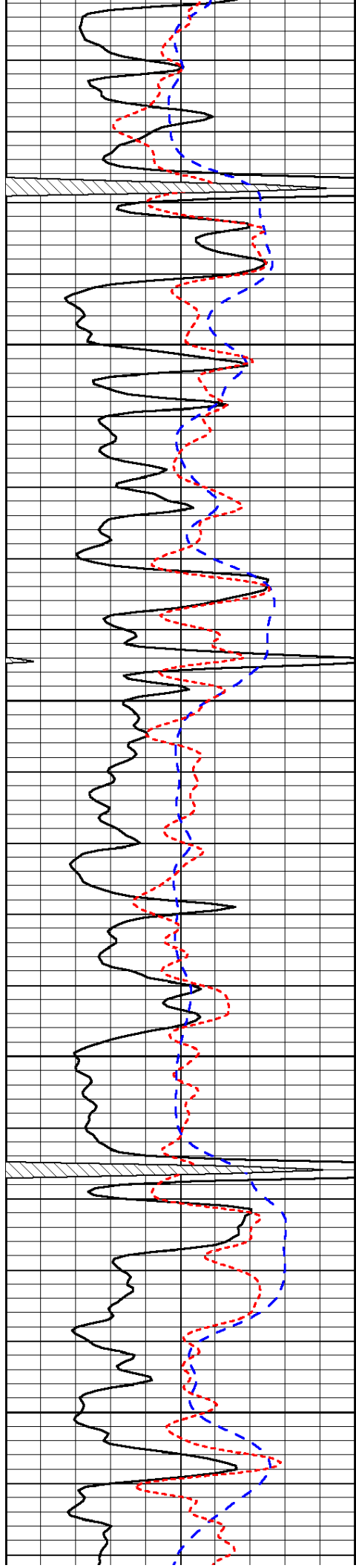
-33

-33

-33

-33

-34

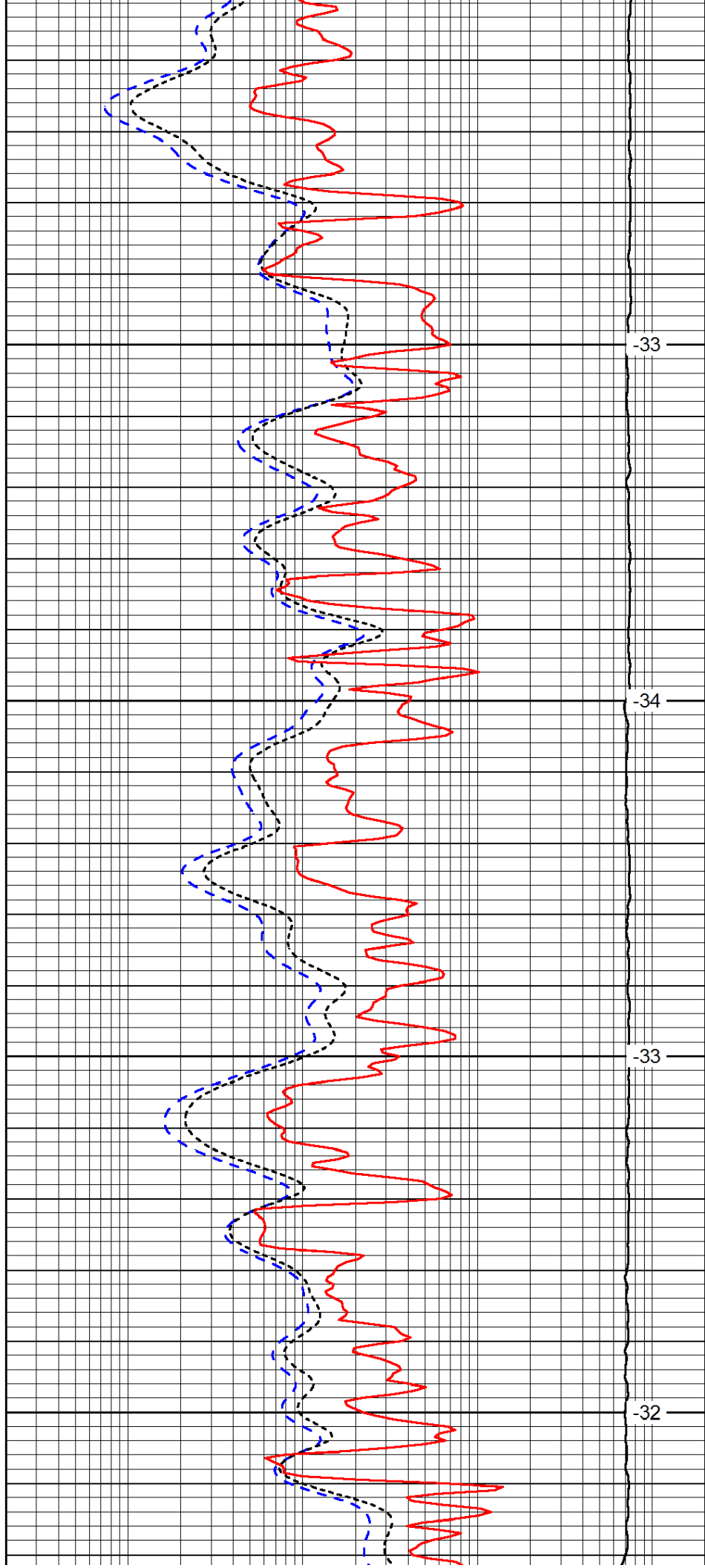


3850

3900

3950

4000

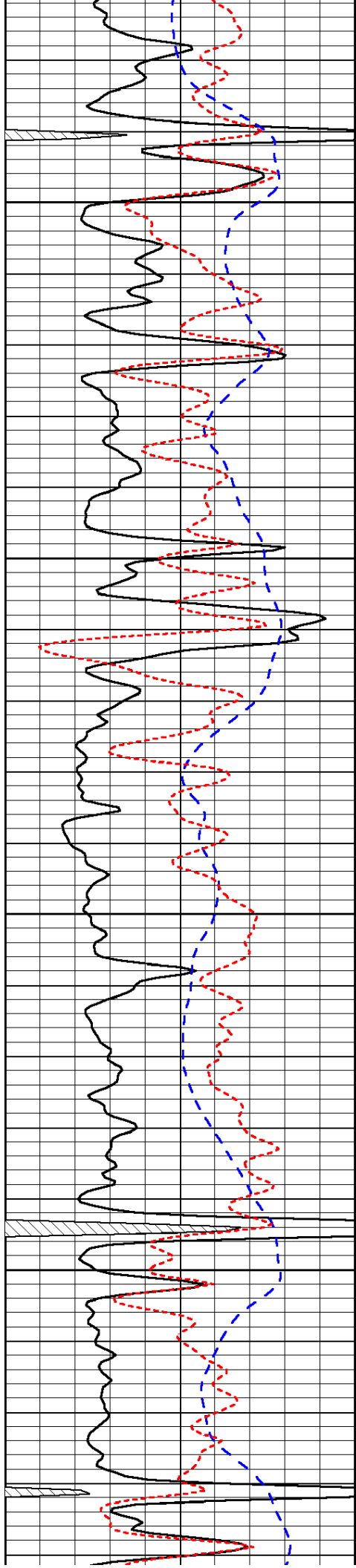


-33

-34

-33

-32

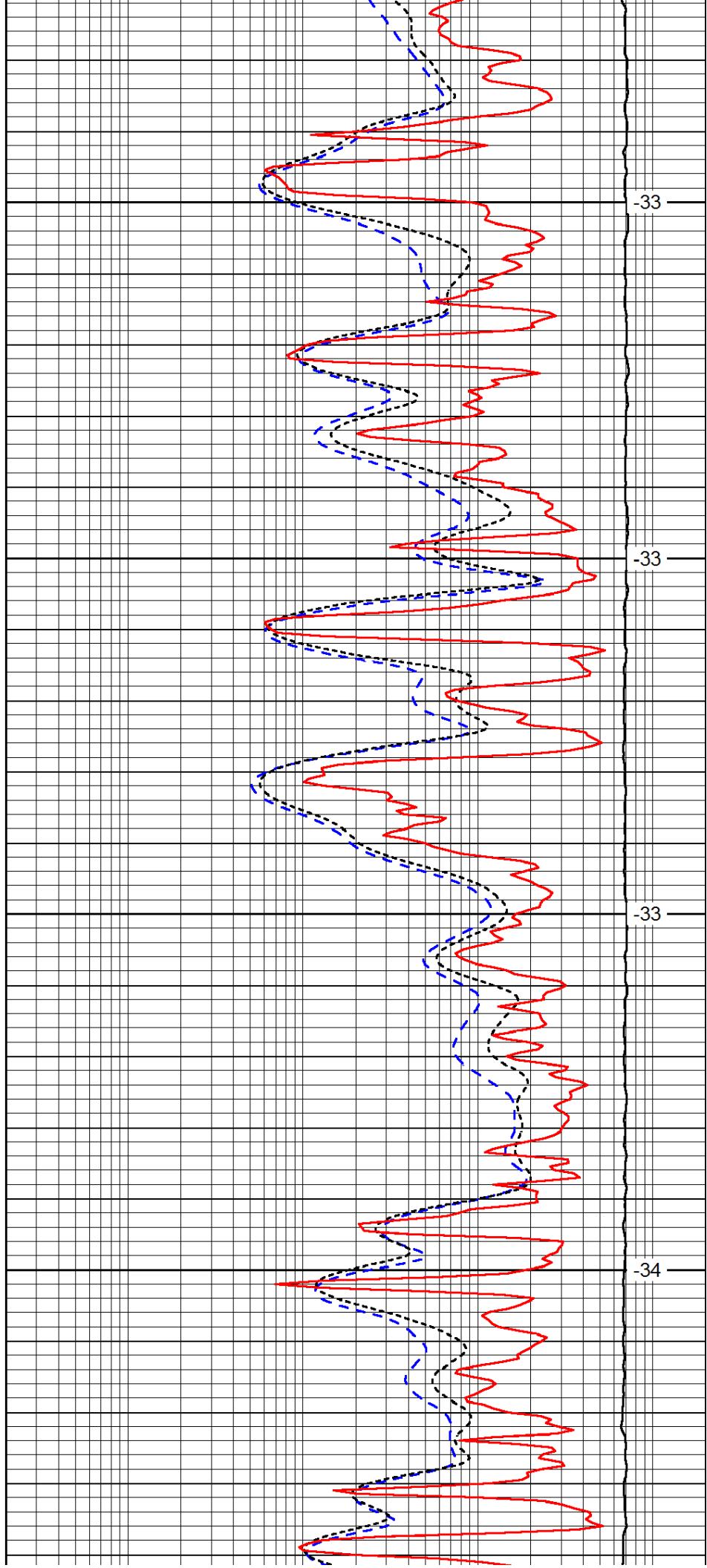


4050

4100

4150

4200

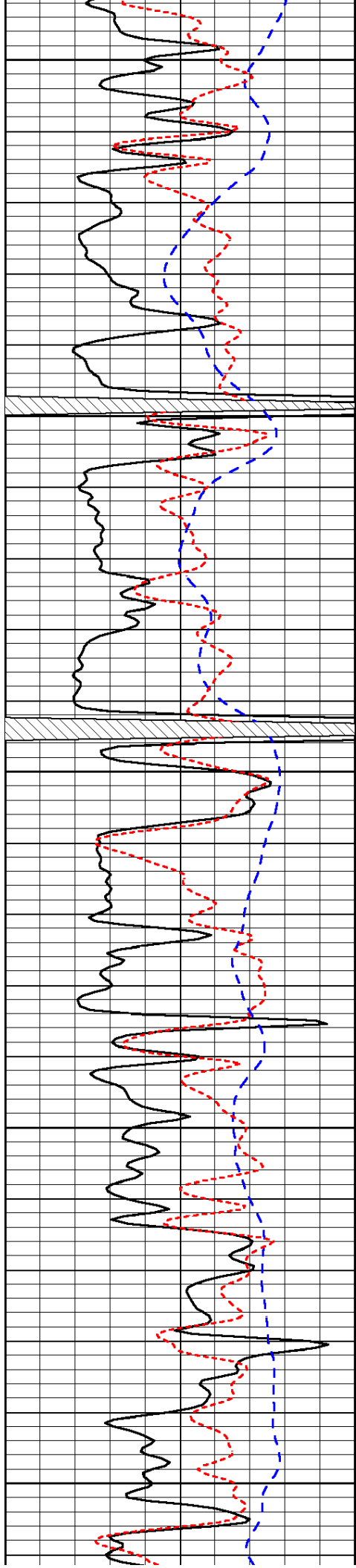


-33

-33

-33

-34



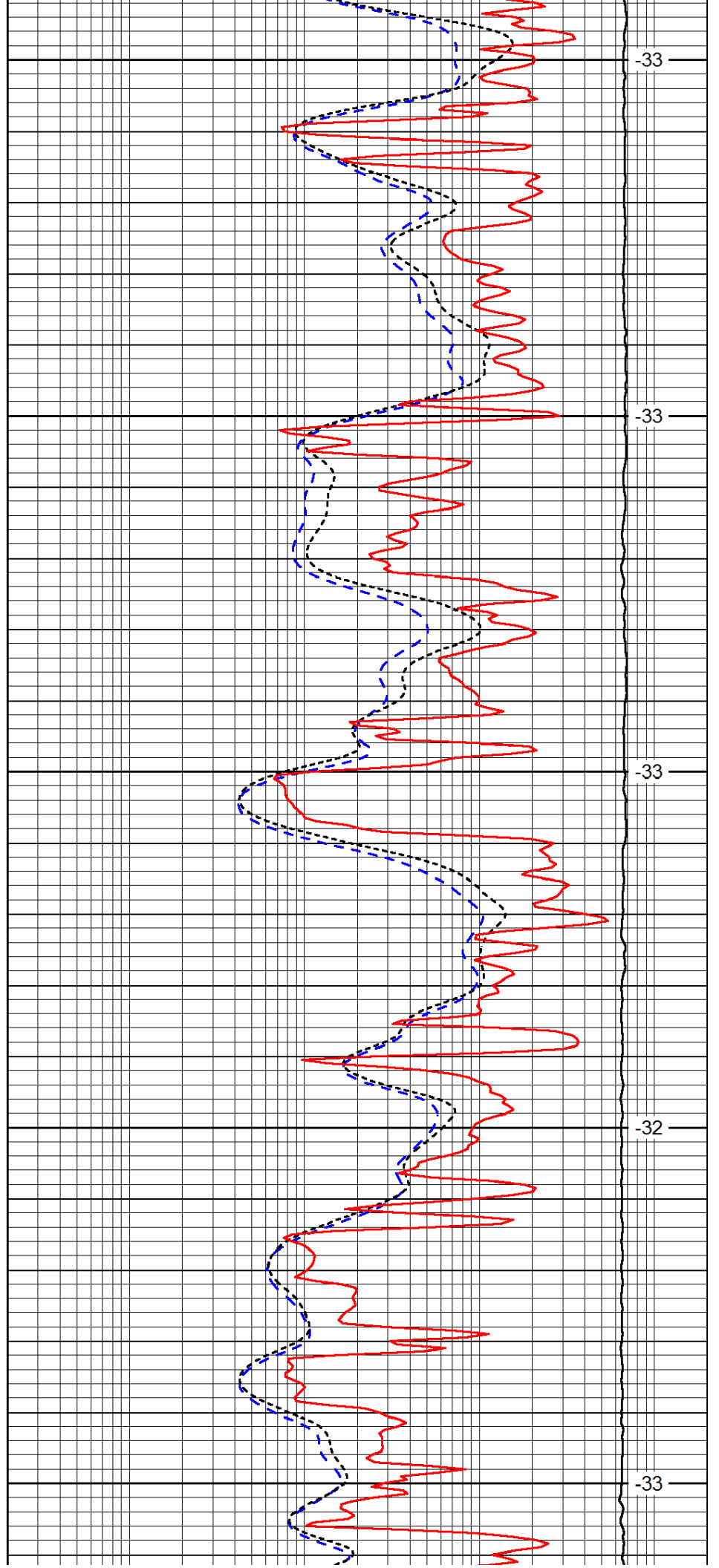
4250

4300

4350

4400

4450



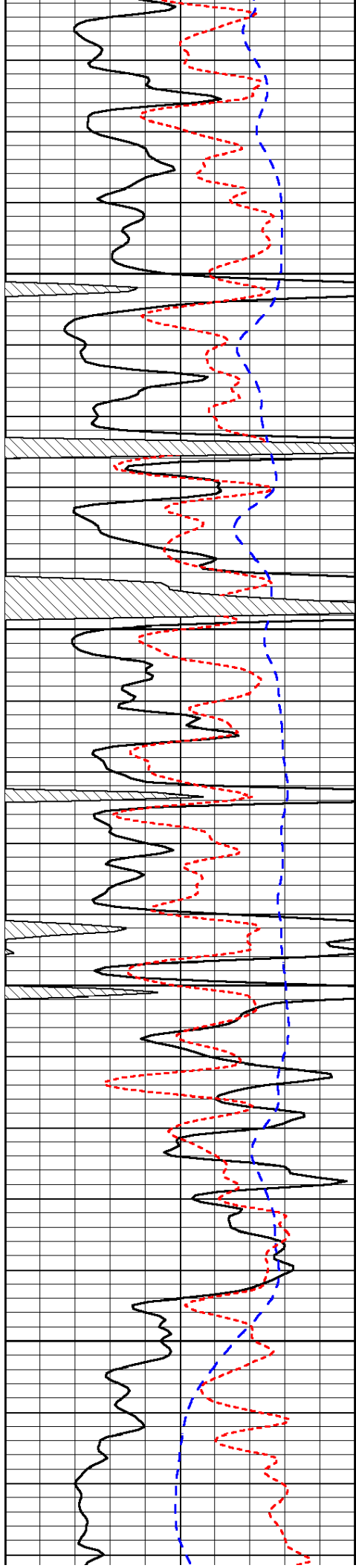
-33

-33

-33

-32

-33

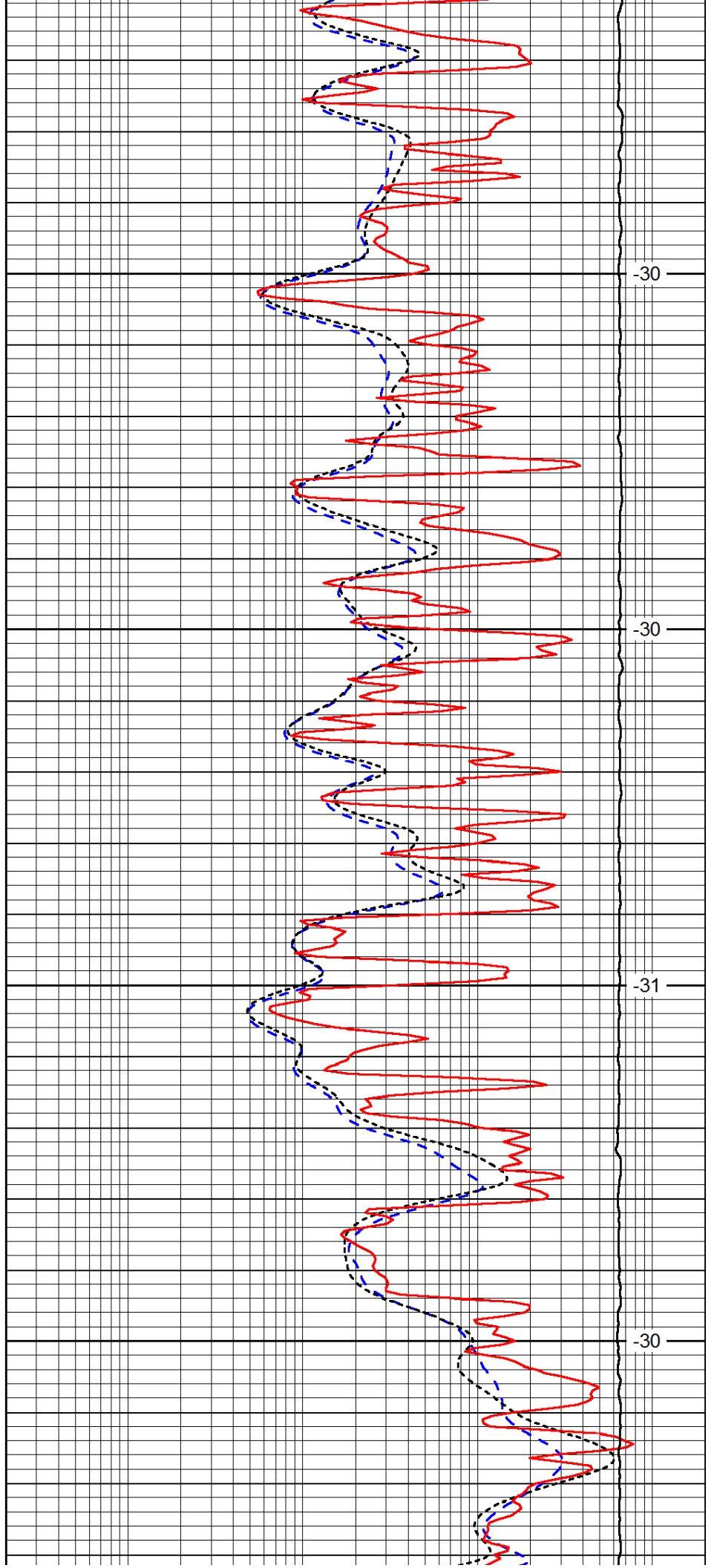


4500

4550

4600

4650

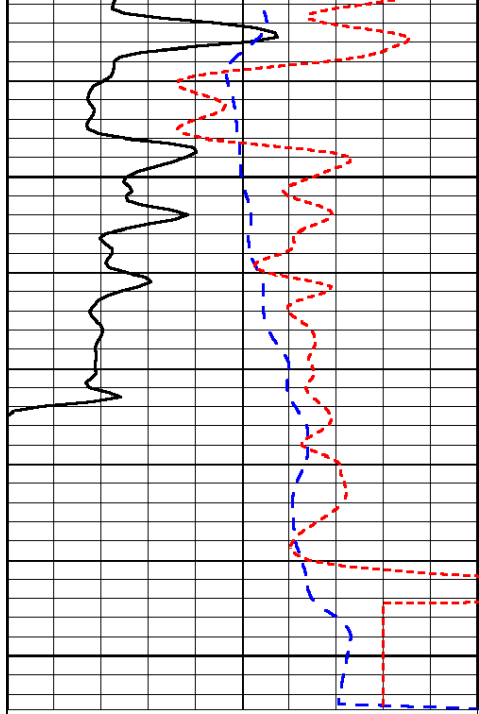


-30

-30

-31

-30



0	Gamma Ray	150
-200	SP (mV)	0
-160	Rxo / Rt	40

4700

4750



-30

-31

0.2	Deep Resistivity	2000
0.2	Medium Resistivity	2000
0.2	Shallow Resistivity	2000
15000	Line Tension	0

LSPD