



DIGITAL LOG (785) 625-3858

Microresistivity Log

15-101-22,382-00-00

API No.

Company Carmen Schmitt, Inc.
 Well Frontier Unit No. 1
 Field Wildcat
 County Lane State Kansas

Location NENE NE NE
 100' FNL & 100' FEL

Sec: 1 Twp: 20S Rge: 30W

Other Services
 CNL/CDL
 DIL/BHCS

Permanent Datum Ground Level Elevation 2886
 Log Measured From Kelly Bushing 12 Ft. Above Perm. Datum
 Drilling Measured From Kelly Bushing

Elevation
 K.B. 2898
 D.F. 2886
 G.L. 2886

Date	7/10/2012
Run Number	Two
Depth Driller	4750
Depth Logger	4747
Bottom Logged Interval	4746
Top Log Interval	3500
Casing Driller	8.625 @ 222
Casing Logger	222
Bit Size	7.875
Type Fluid in Hole	Chemical
Salinity, ppm CL	2700
Density / Viscosity	9.1 32
pH / Fluid Loss	9.0 11.2
Source of Sample	Flowline
Rm @ Meas. Temp	.87 @ 78
Rmf @ Meas. Temp	.65 @ 78
Rmc @ Meas. Temp	1.17 @ 78
Source of Rmf / Rmc	Charts
Rm @ BHT	.55 @ 124
Operating Rig Time	5 Hours
Max Rec. Temp. F	124
Equipment Number	108
Location	Hays
Recorded By	J. Long
Witnessed By	Vern Schrag

<<< Fold Here >>>

All interpretations are opinions based on inferences from electrical or other measurements and we cannot and do not guarantee the accuracy or correctness of any interpretation, and we shall not, except in the case of gross or willful negligence on our part, be liable or responsible for any loss, costs, damages, or expenses incurred or sustained by anyone resulting from any interpretation made by any of our officers, agents or employees. These interpretations are also subject to our general terms and conditions set out in our current Price Schedule.

Comments

Thank you for using Log-Tech, Inc.
 (785) 625-3858

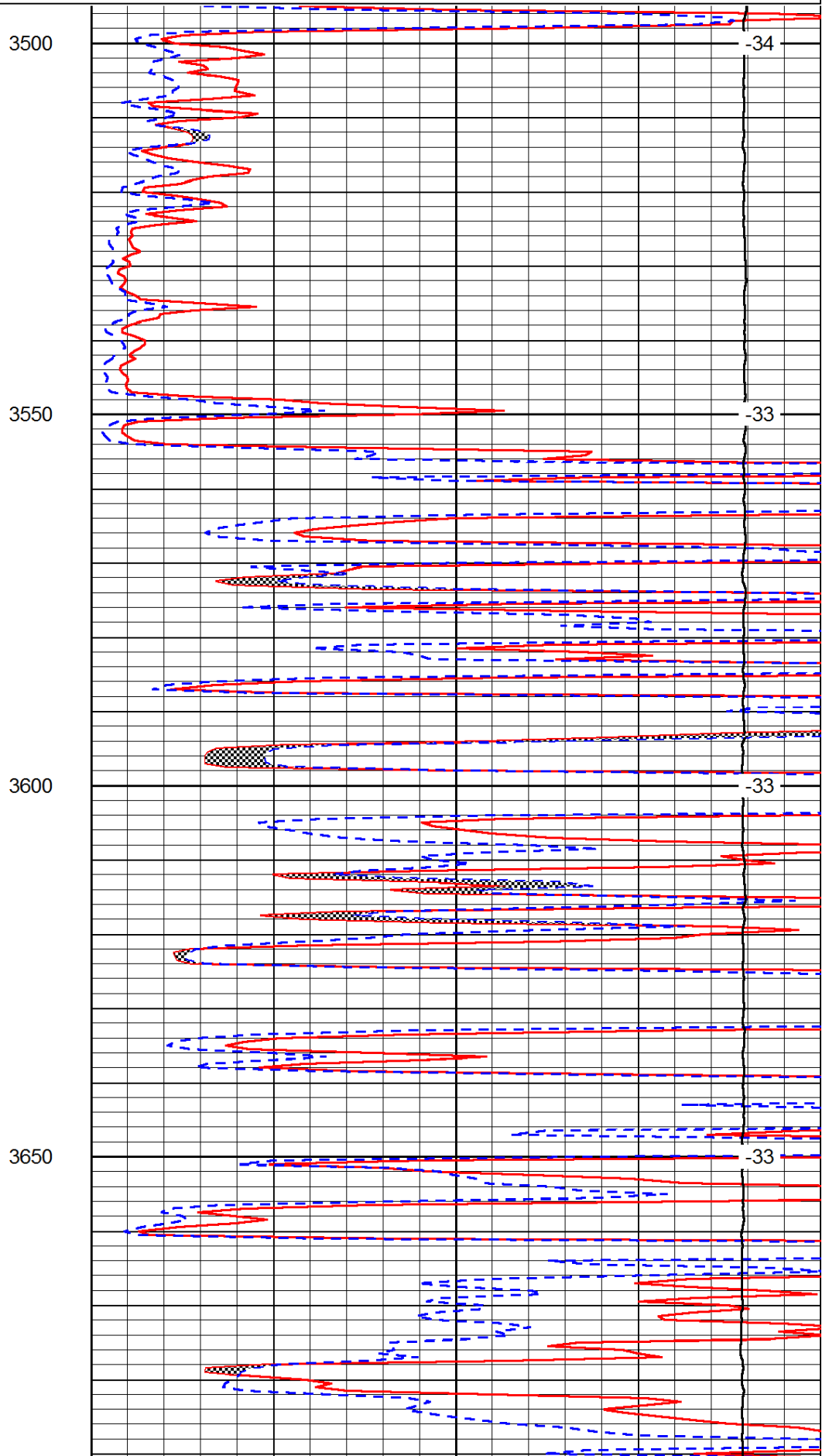
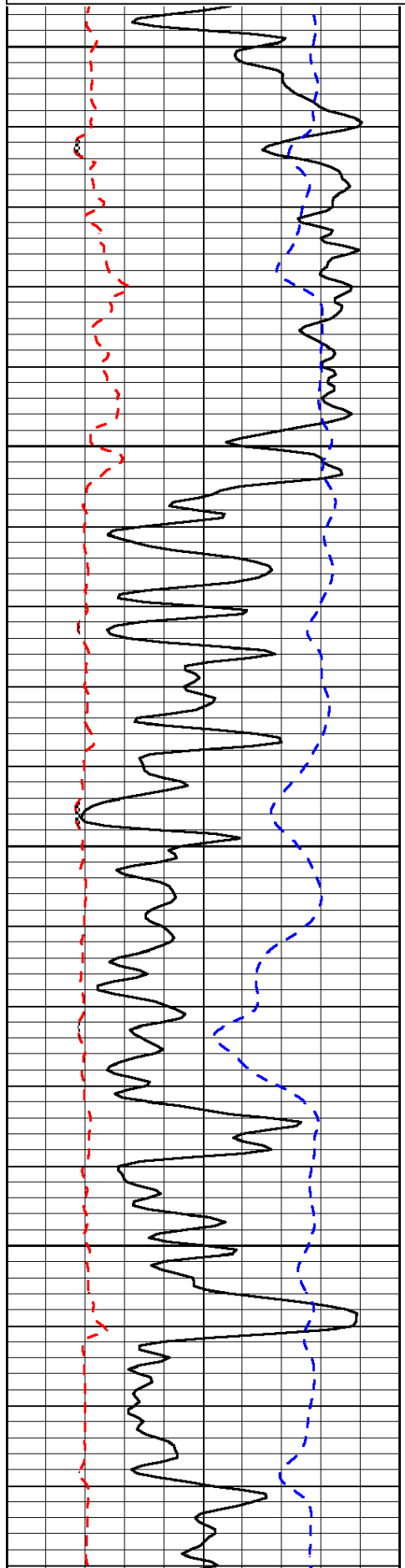
Dighton, 9 South to 60 Road, 6 West, Southwest Into

Database File: c:\warrior\data\carmen schmitt_frontier unit no. 1\carmenschmitt_frontier_1hd.db
 Dataset Pathname: dil/carmstck
 Presentation Format: micro
 Dataset Creation: Tue Jul 10 11:01:53 2012
 Charted by: Depth in Feet scaled 1:240

0	Gamma Ray	150
6	Micro Log Caliper (GAPI)	16
-200	SP (mV)	0

0	Micro Inverse 1 X 1	40
0	Micro Normal 2"	40
15000	Line Weight	0

LSPD



3500

3550

3600

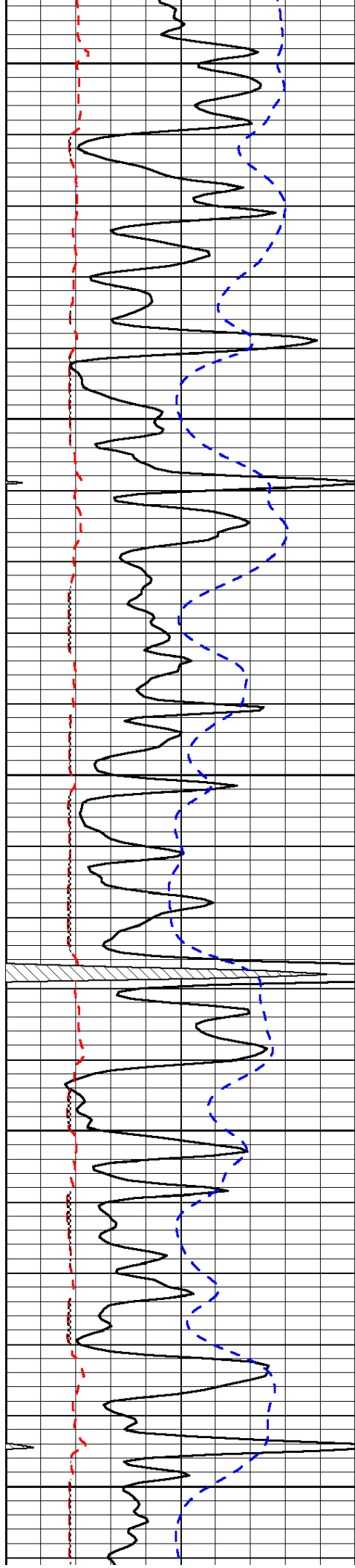
3650

-34

-33

-33

-33



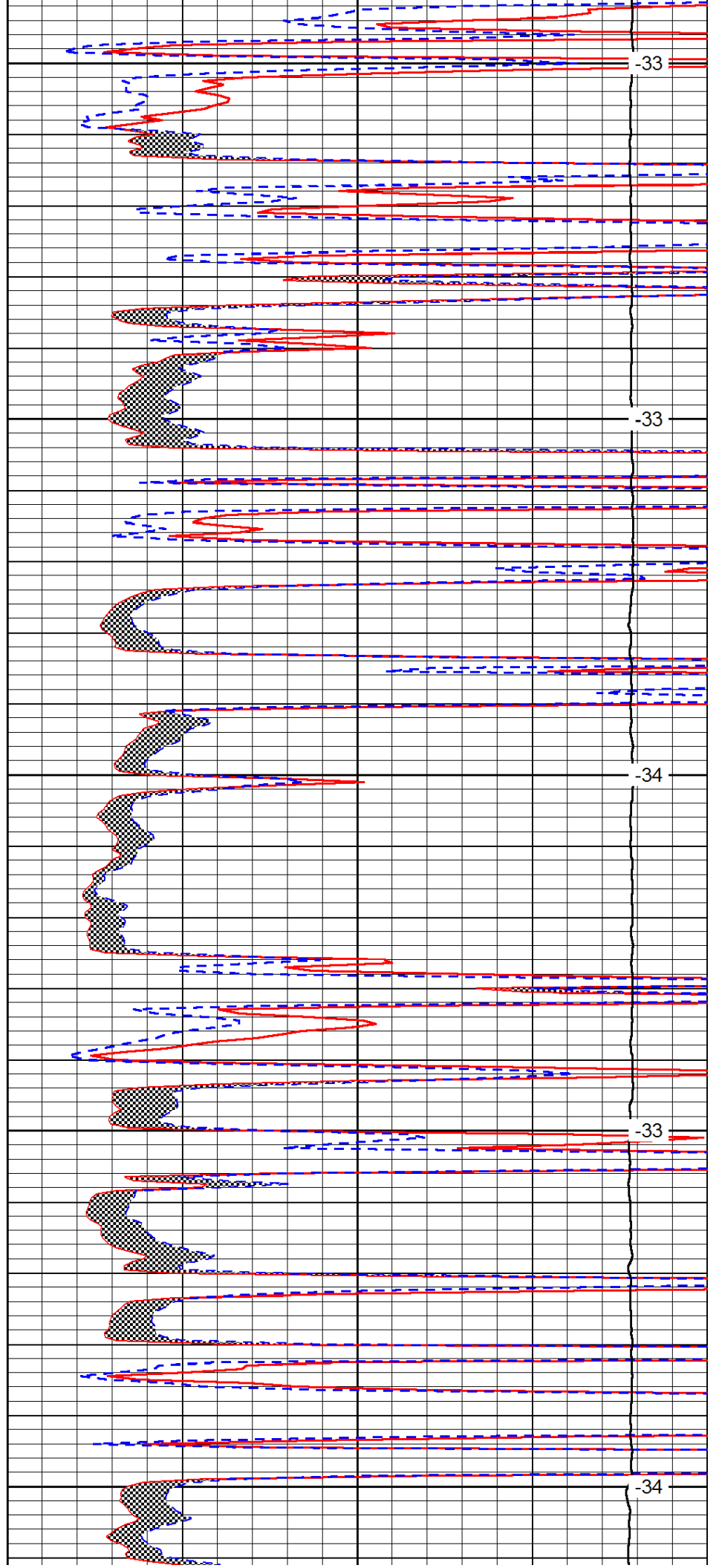
3700

3750

3800

3850

3900



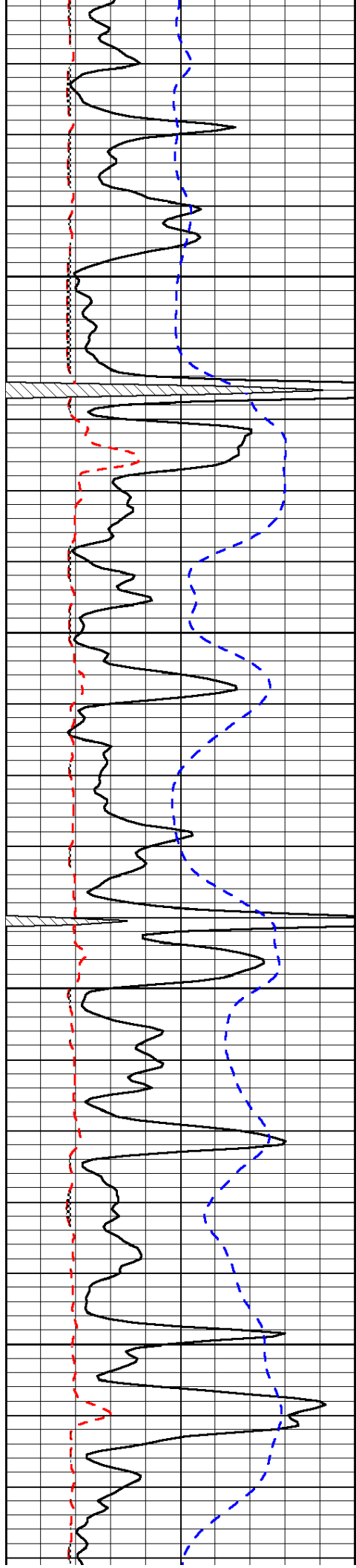
-33

-33

-34

-33

-34

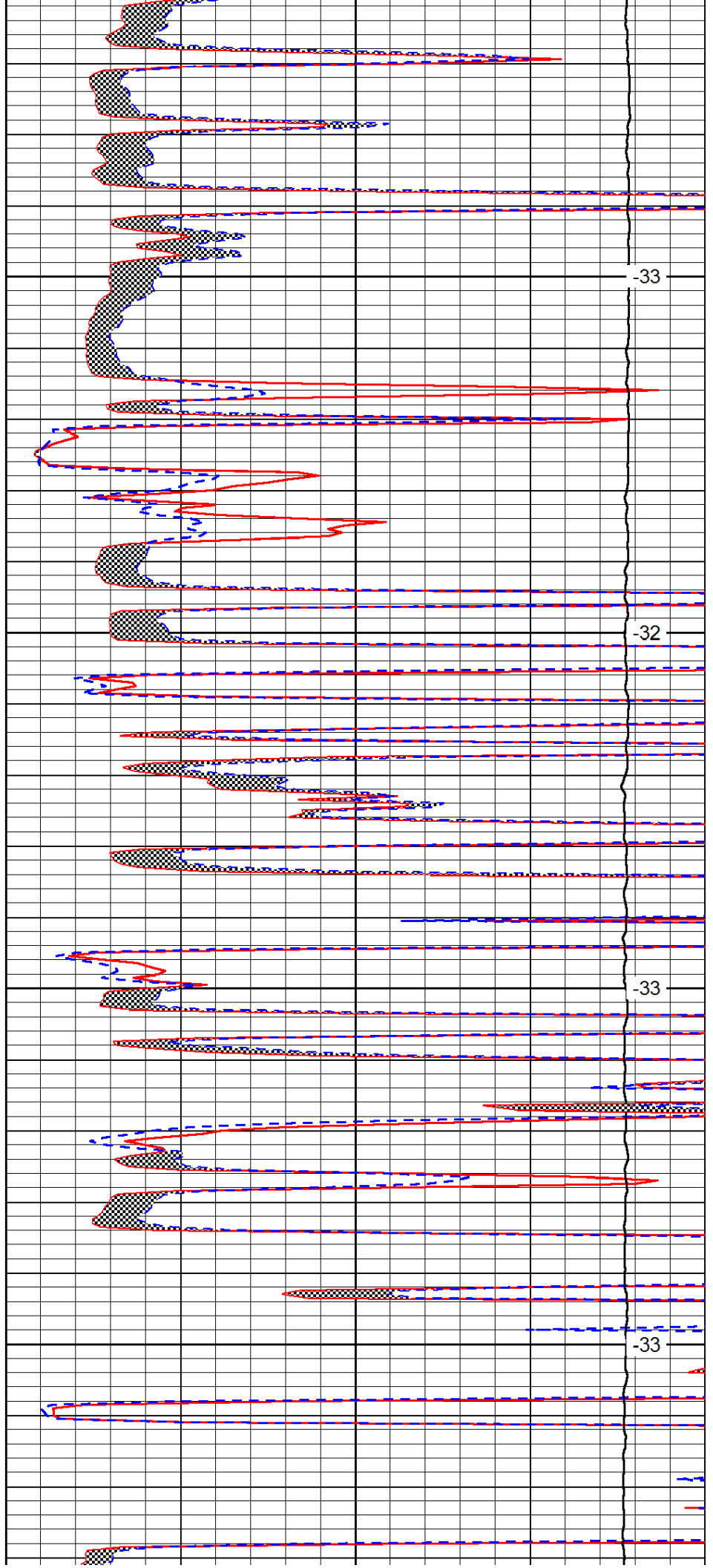


3950

4000

4050

4100

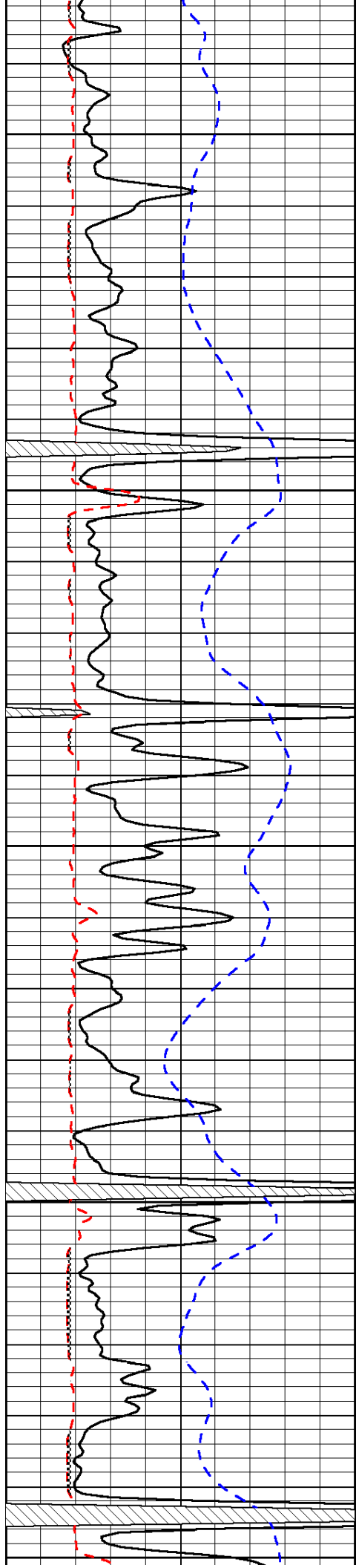


-33

-32

-33

-33



4150

-33

4200

-34

4250

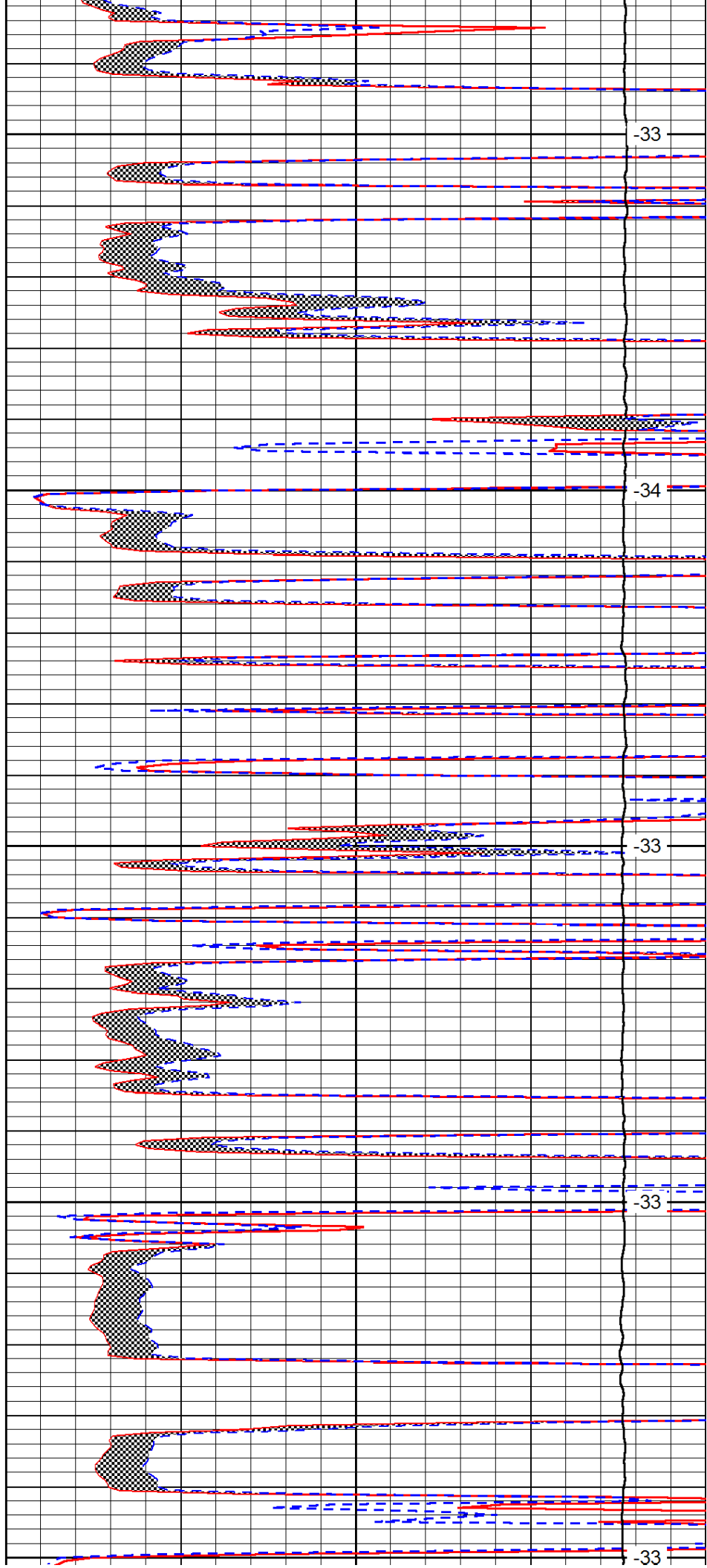
-33

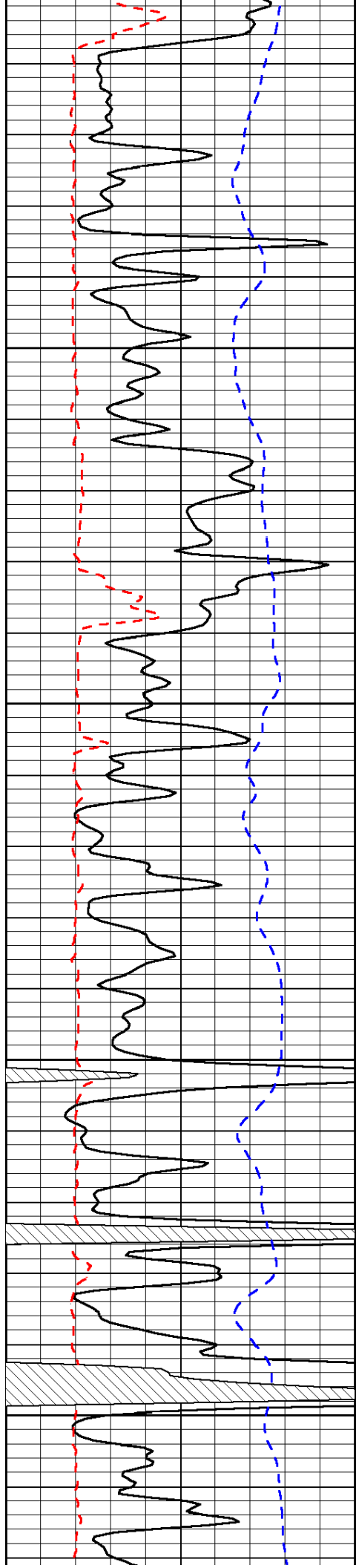
4300

-33

4350

-33



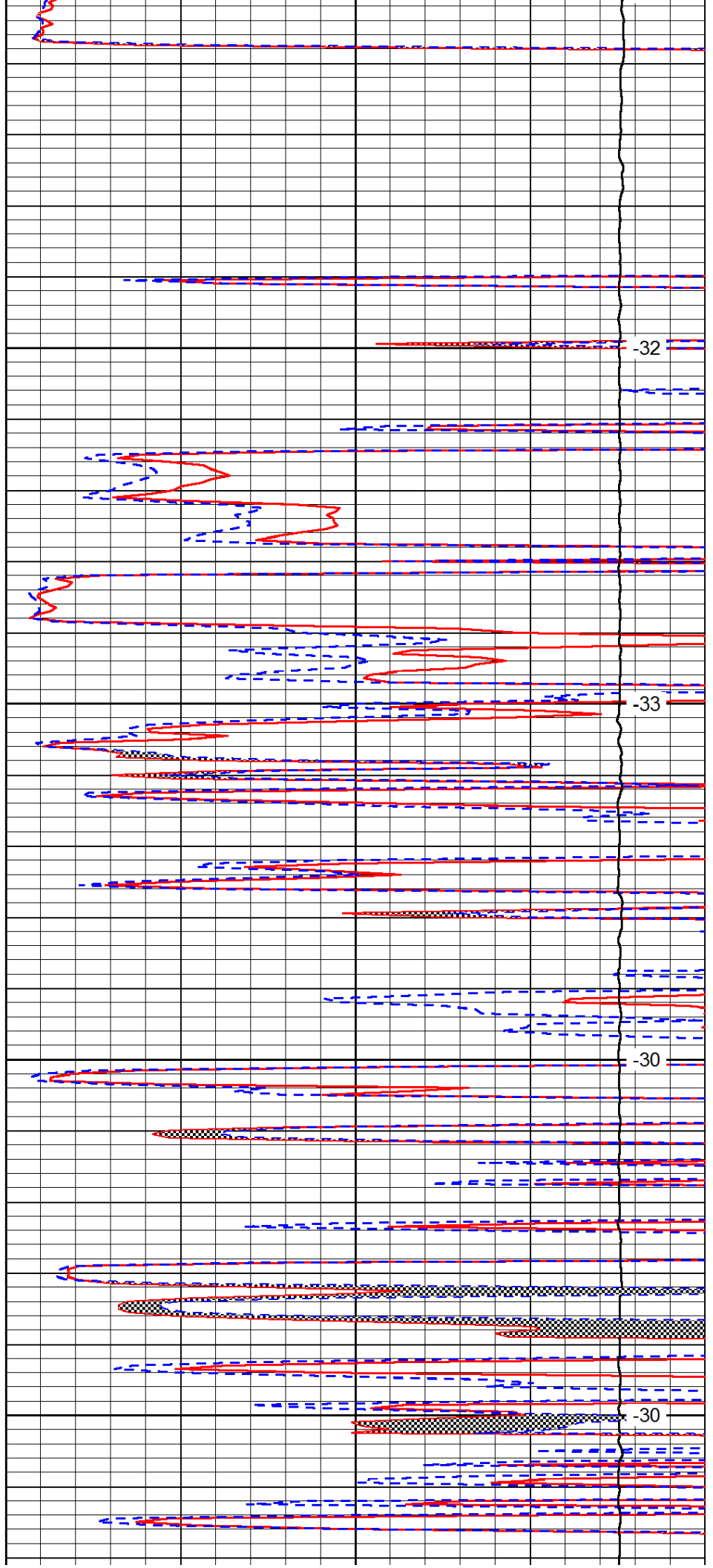


4400

4450

4500

4550

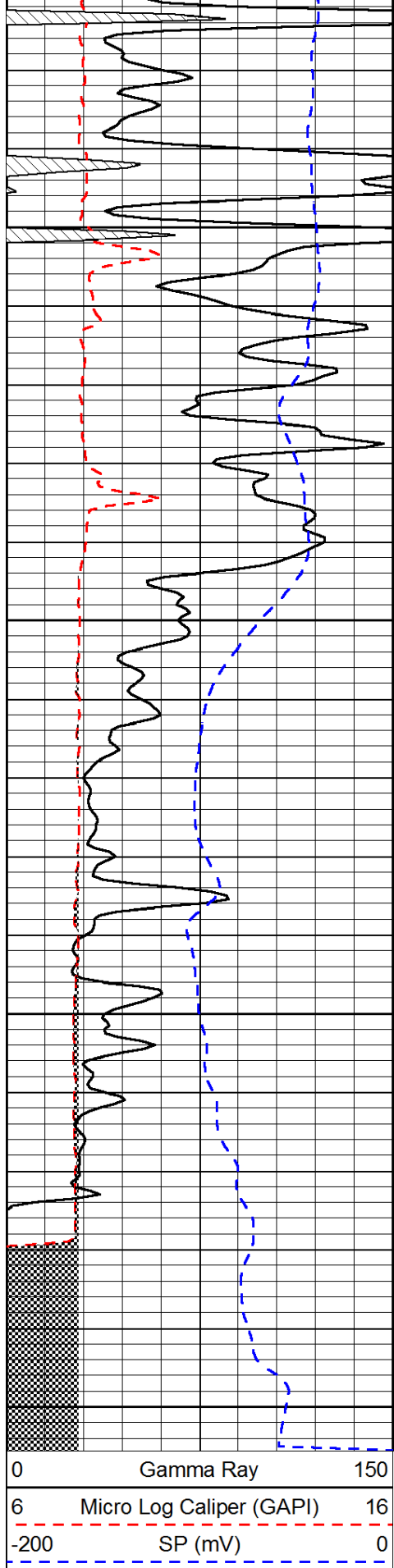


-32

-33

-30

-30

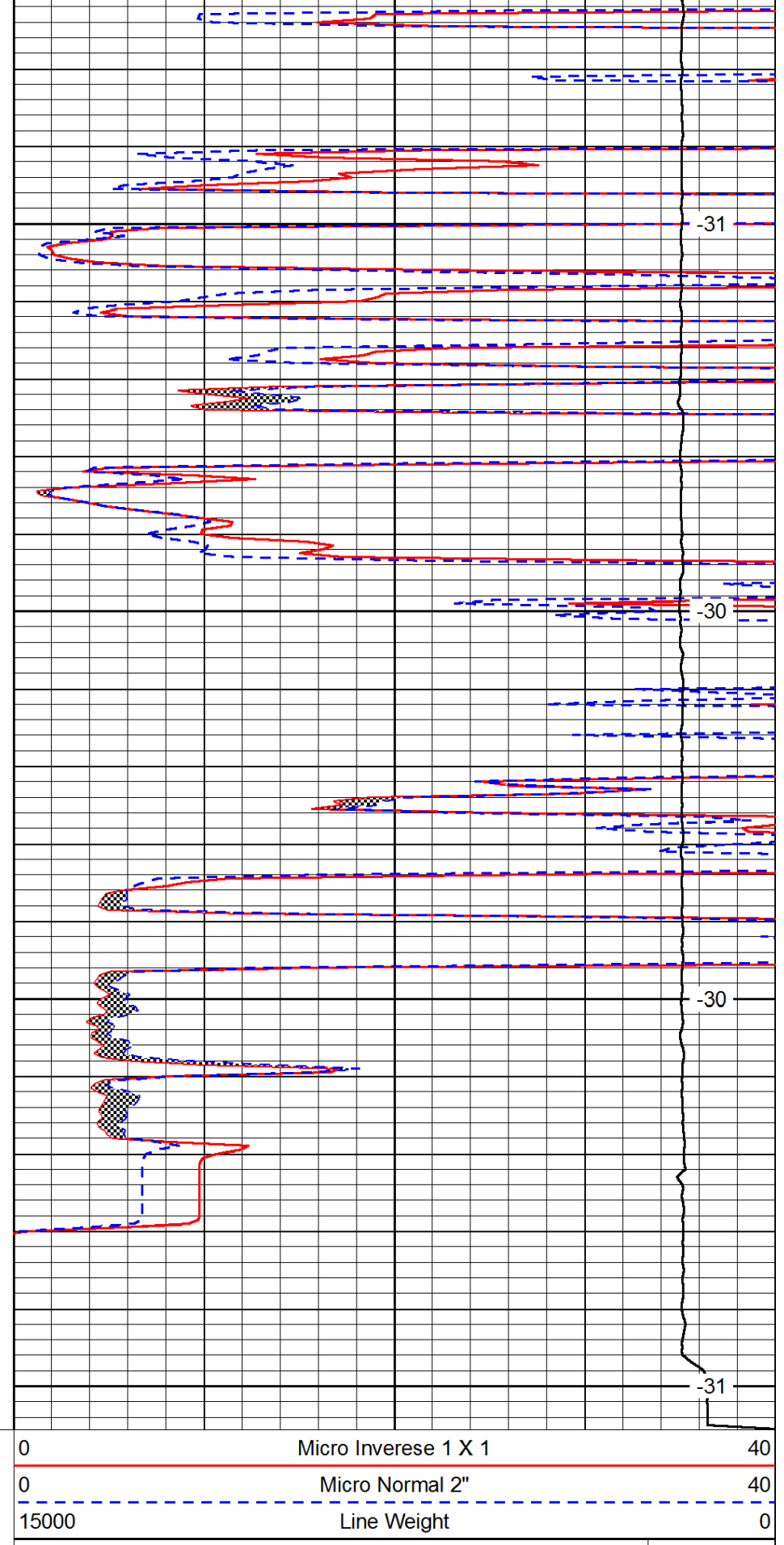


4600

4650

4700

4750



-31

-30

-30

-31

0	Gamma Ray	150
6	Micro Log Caliper (GAPI)	16
-200	SP (mV)	0

0	Micro Inverse 1 X 1	40
0	Micro Normal 2''	40
15000	Line Weight	0

LSPD