



Pioneer Energy Services

Dual Compensated Porosity Log

API No.	15-051-26,311-00-00		
Company	TDL, Inc.		
Well	Irvin Trust No. 2		
Field	Unnamed		
County	Ellis		State Kansas
Location	410' FSL & 2035' FWL		
Sec: 13	Twp: 15 S	Rge: 19 W	
Permanent Datum	Ground Level	Elevation 2007	
Log Measured From	Kelly Bushing	10	Ft. Above Perm. Datum
Drilling Measured From	Kelly Bushing		
Date	8/15/2012	Elevation K.B. 2017 D.F. 2007 G.L. 2007	
Run Number	One		
Type Log	CNL / CDL		
Depth Driller	3750		
Depth Logger	3749		
Bottom Logged Interval	3728		
Top Logged Interval	2900		
Type Fluid In Hole	Chemical		
Salinity, PPM CL	2800		
Density	8.9		
Level	Full		
Max. Rec. Temp. F	114		
Operating Rig Time	3 1/2 Hours		
Equipment -- Location	17 Hays		
Recorded By	D. Martin		
Witnessed By	Tom Denning		

Borehole Record		Casing Record				
Run No	Bit From	To	Size	Wgt.	From	To
One	12.25	00	1205	8.625	23#	00
Two	7.875	1205	TD			1205

<<< Fold Here >>>

All interpretations are opinions based on inferences from electrical or other measurements and we cannot and do not guarantee the accuracy or correctness of any interpretation, and we shall not, except in the case of gross or willful negligence on our part, be liable or responsible for any loss, costs, damages, or expenses incurred or sustained by anyone resulting from any interpretation made by any of our officers, agents or employees. These interpretations are also subject to our general terms and conditions set out in our current Price Schedule.

Comments

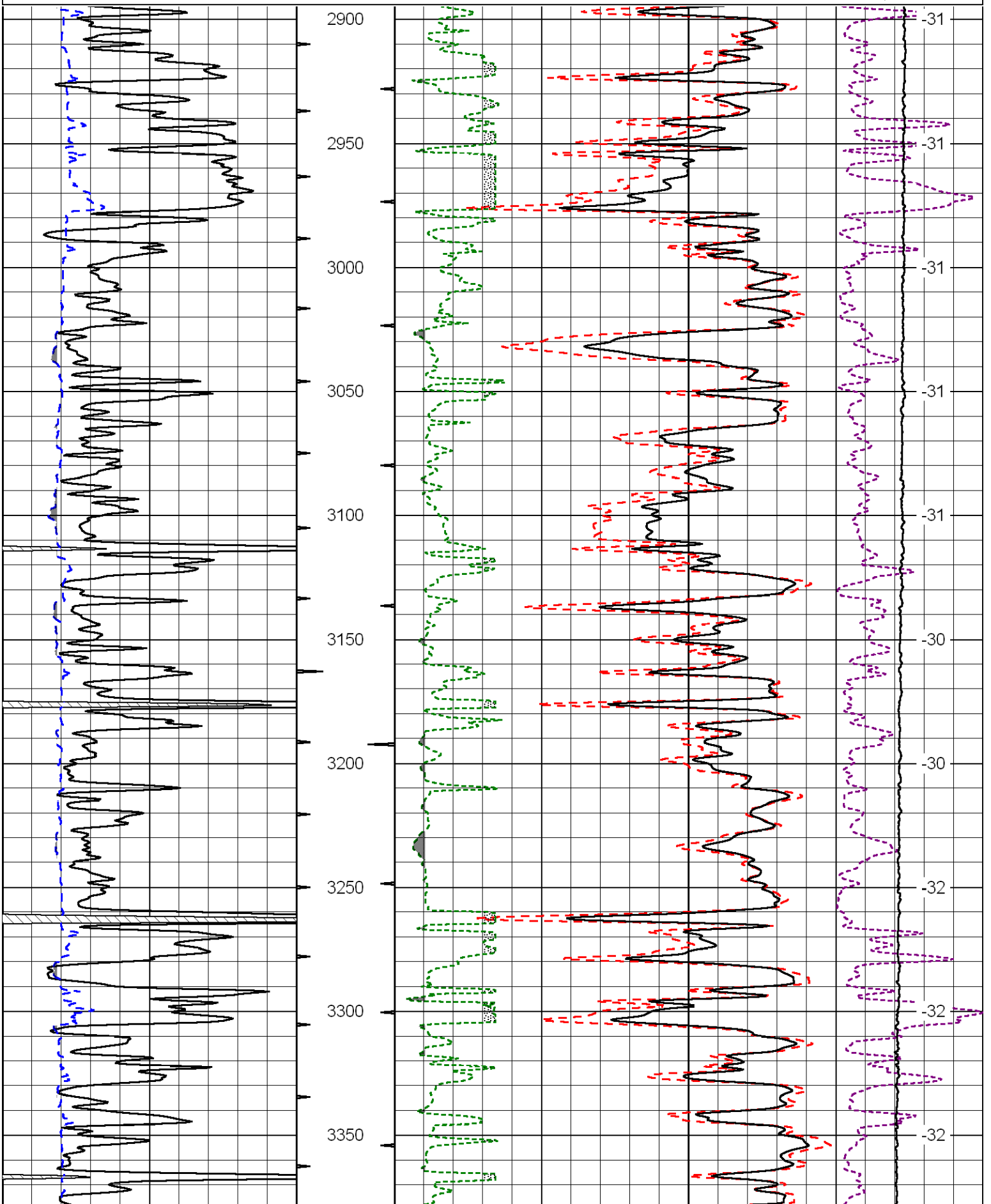
Thank you for using Log-Tech, Inc.
 (785) 625-3858

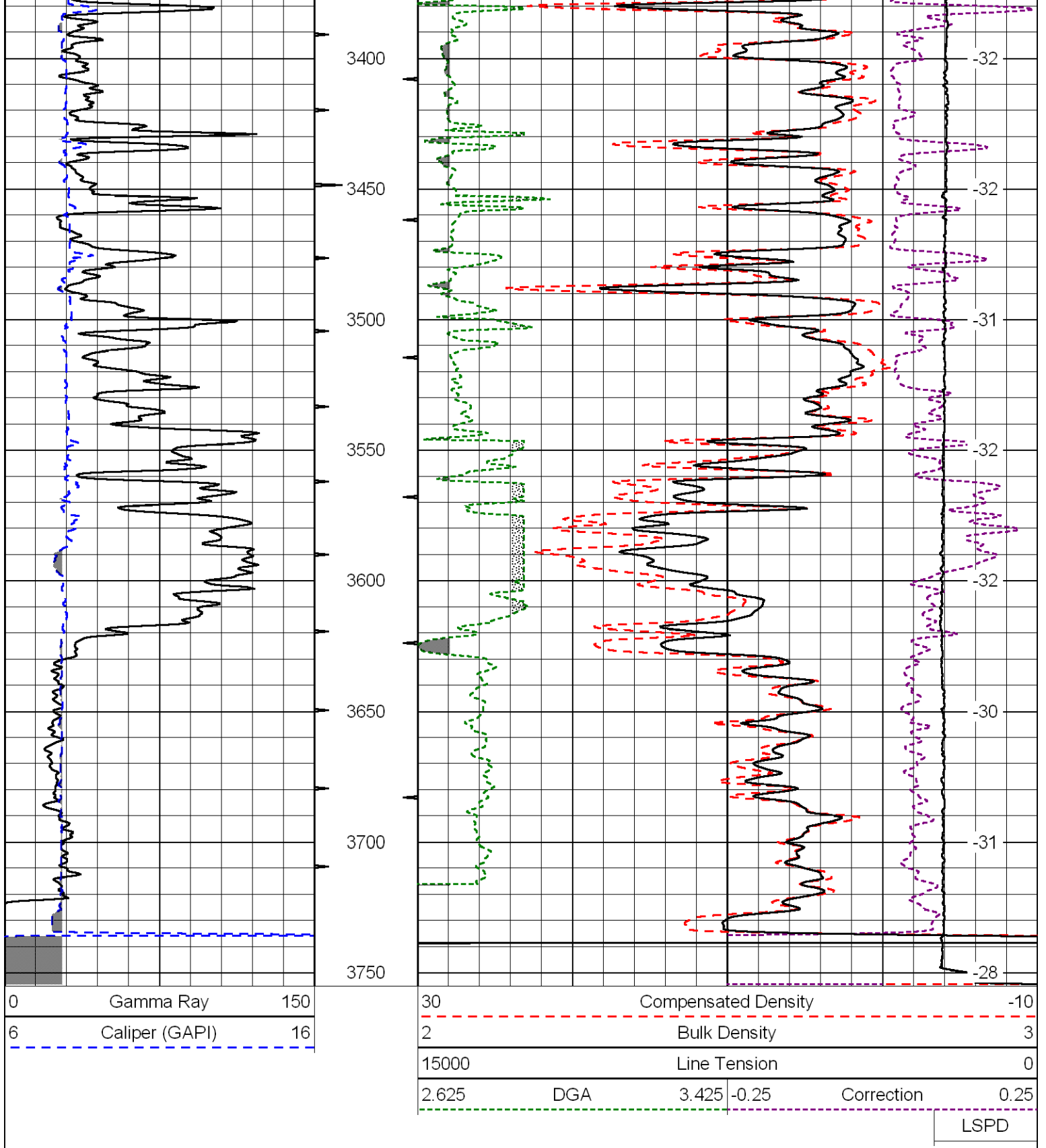
 Antonino, KS
 3 S, 3/8 E, N Into

Database File: tdhd.db
 Dataset Pathname: DIL/tdstck
 Presentation Format: cdl
 Dataset Creation: Wed Aug 15 14:17:34 2012
 Charted by: Depth in Feet scaled 1:600

0	Gamma Ray	150
6	Caliper (GAPI)	16

30	Compensated Density		-10
2	Bulk Density		3
15000	Line Tension		0
2.625	DGA	3.425	-0.25
			Correction
			0.25
LSPD			





Database File: tdhd.db
 Dataset Pathname: DIL/tdstck
 Presentation Format: cndlspec
 Dataset Creation: Wed Aug 15 14:17:34 2012
 Charted by: Depth in Feet scaled 1:240

