



Pioneer Energy Services

Dual Induction Log

API No. 15-051-26,311-00-00	Company TDI, Inc.	Location 410' FSL & 2035' FWL	Other Services CNL/CDL MEL
Well Irvin Trust No. 2	County Ellis		
Field Unnamed	State Kansas	Sec: 13	Elevation K.B. 2017 D.F. 2007 G.L. 2007
County Ellis	State Kansas	Twp: 15 S	
Location 410' FSL & 2035' FWL		Rge: 19 W	

Permanent Datum	Ground Level	Elevation 2007
Log Measured From	Kelly Bushing	10 Ft. Above Perm. Datum
Drilling Measured From	Kelly Bushing	
Date	8/15/2012	
Run Number	One	
Depth Driller	3750	
Depth Logger	3749	
Bottom Logged Interval	3748	
Top Log Interval	1200	
Casing Driller	8.625 @ 1205	
Casing Logger	1202	
Bit Size	7.875	
Type Fluid in Hole	Chemical	
Salinity, ppm CL	2800	
Density / Viscosity	8.9	58
pH / Fluid Loss	10.5	7.8
Source of Sample	Flowline	
Rm @ Meas. Temp	.50 @ 70	
Rmf @ Meas. Temp	.38 @ 70	
Rmc @ Meas. Temp	.68 @ 70	
Source of Rmf / Rmc	Charts	
Rm @ BHT	.31 @ 114	
Operating Rig Time	3 1/2 Hours	
Max Rec. Temp. F	114	
Equipment Number	17	
Location	Hays	
Recorded By	D. Martin	
Witnessed By	Tom Denning	

<<< Fold Here >>>

All interpretations are opinions based on inferences from electrical or other measurements and we cannot and do not guarantee the accuracy or correctness of any interpretation, and we shall not, except in the case of gross or willful negligence on our part, be liable or responsible for any loss, costs, damages, or expenses incurred or sustained by anyone resulting from any interpretation made by any of our officers, agents or employees. These interpretations are also subject to our general terms and conditions set out in our current Price Schedule.

Comments

Thank you for using Log-Tech, Inc.
 (785) 625-3858
 Antonino, KS
 3 S, 3/8 E, N Into

Database File: tdhd.db
 Dataset Pathname: DIL/tdstck
 Presentation Format: dil2in
 Dataset Creation: Wed Aug 15 14:17:34 2012
 Charted by: Depth in Feet scaled 1:600

0 Gamma Ray 150
-200 SP 0

0 Shallow Resistivity 50
0 Deep Resistivity 50

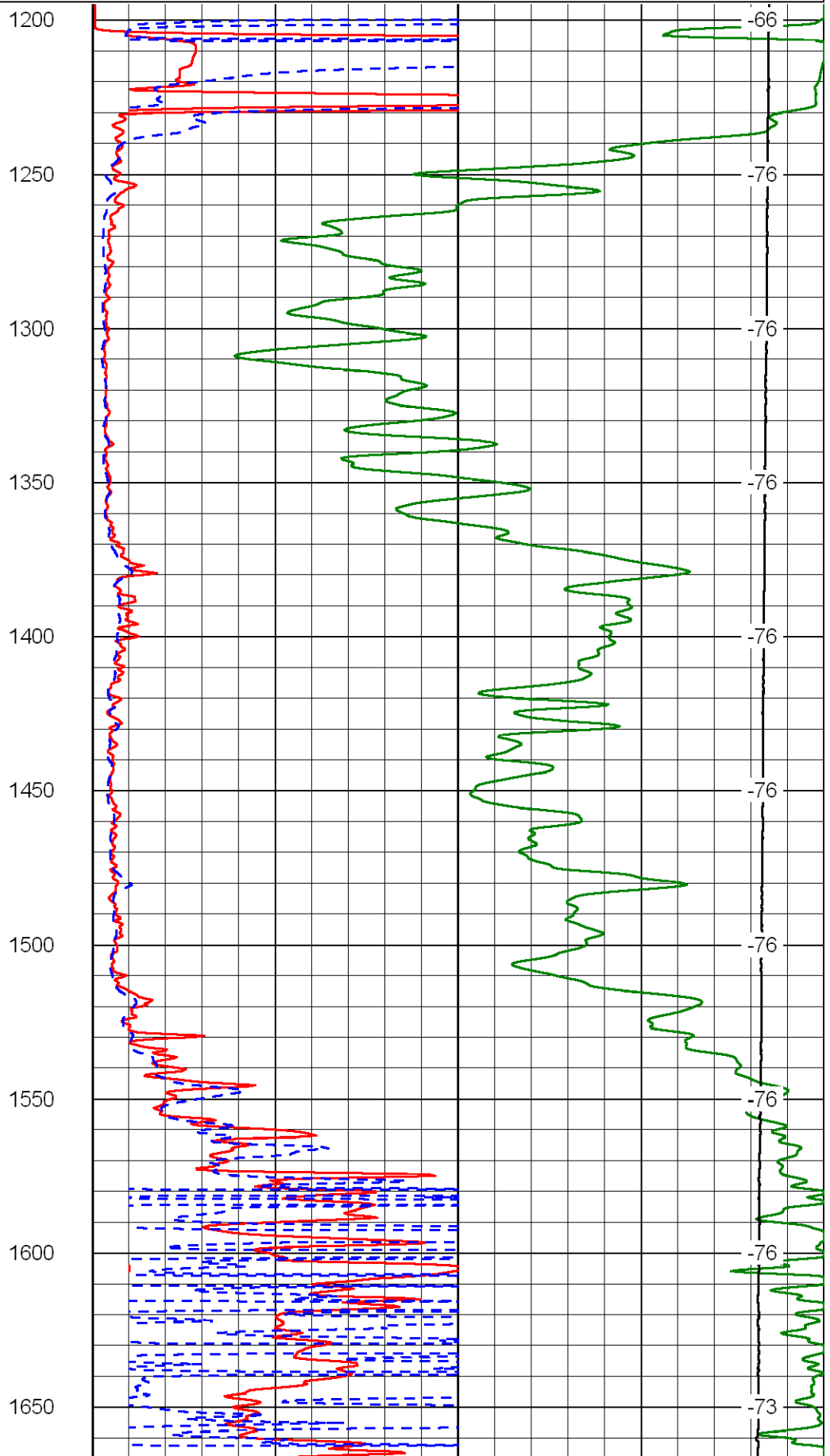
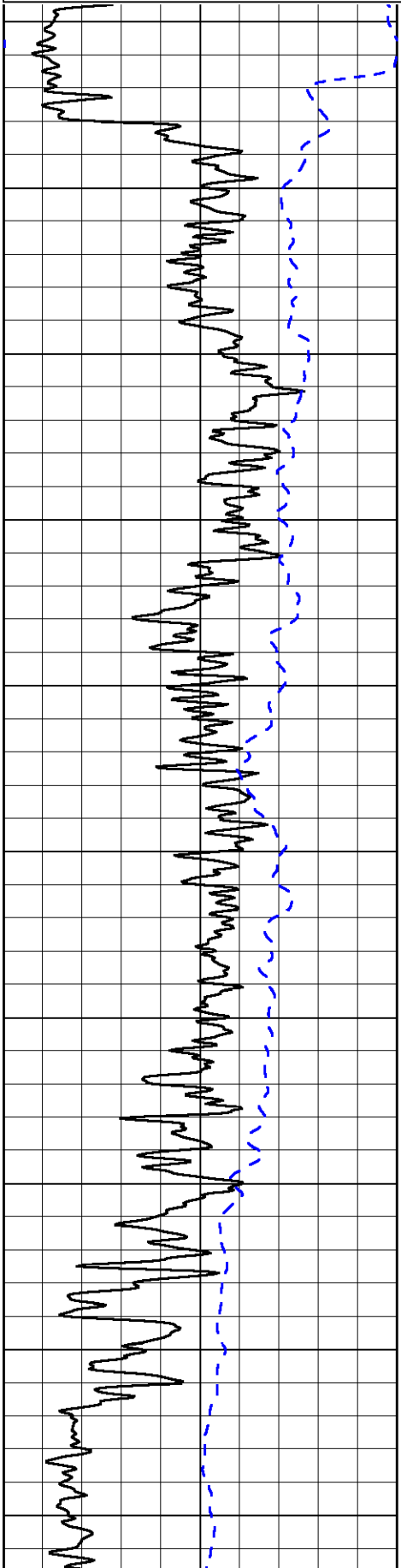
LSPD

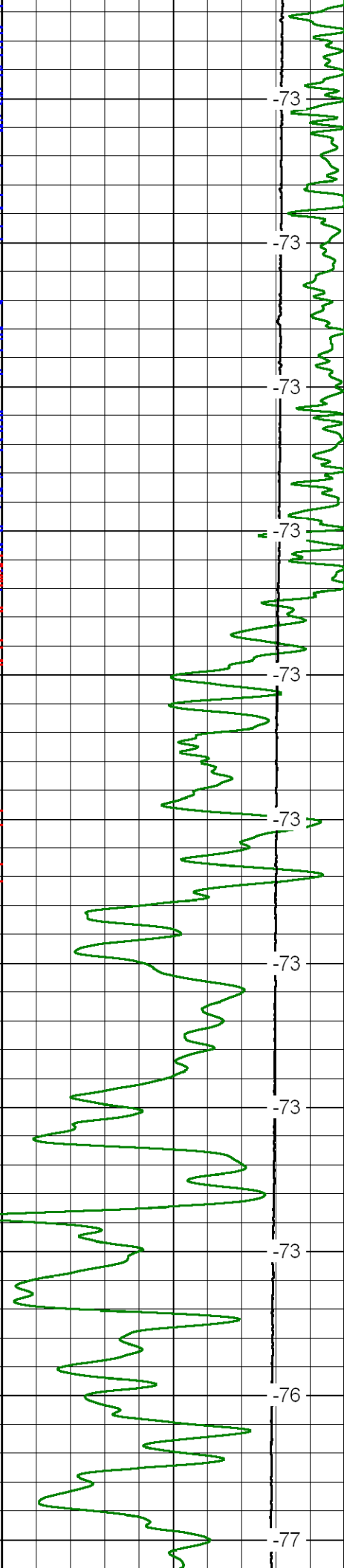
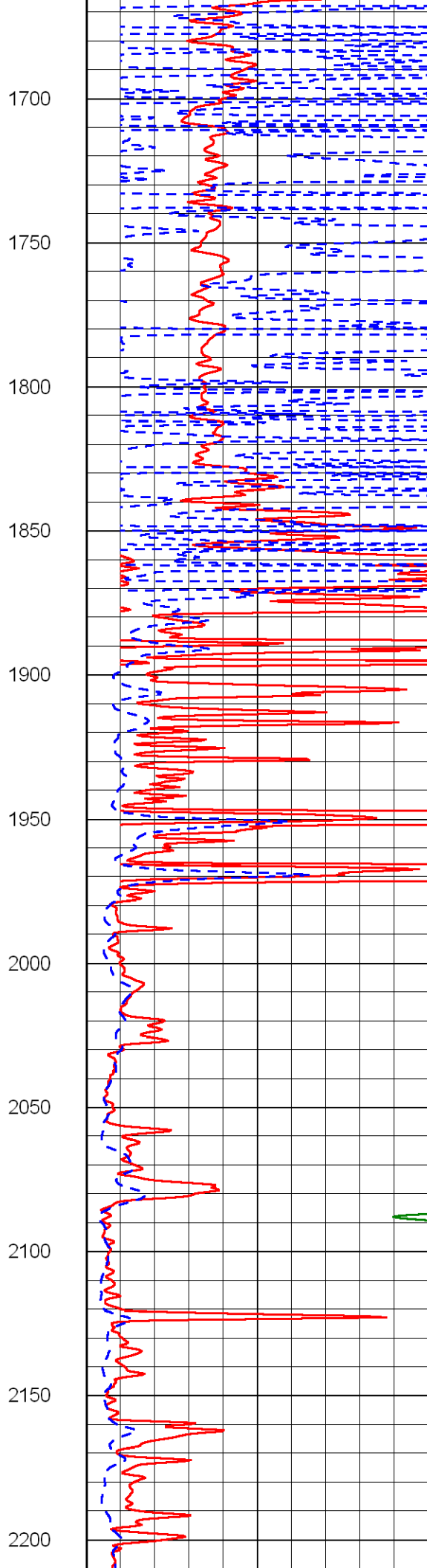
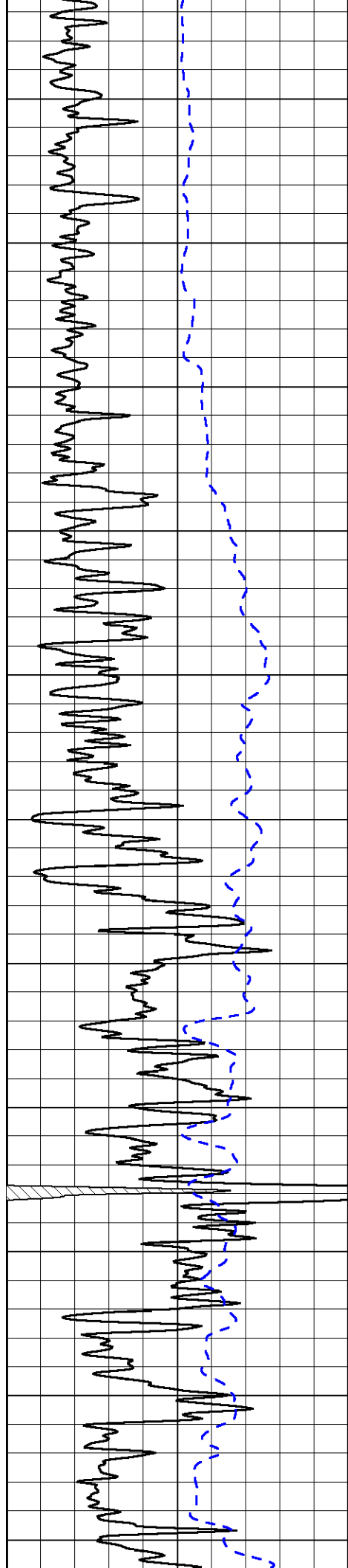
1000 Conductivity 0

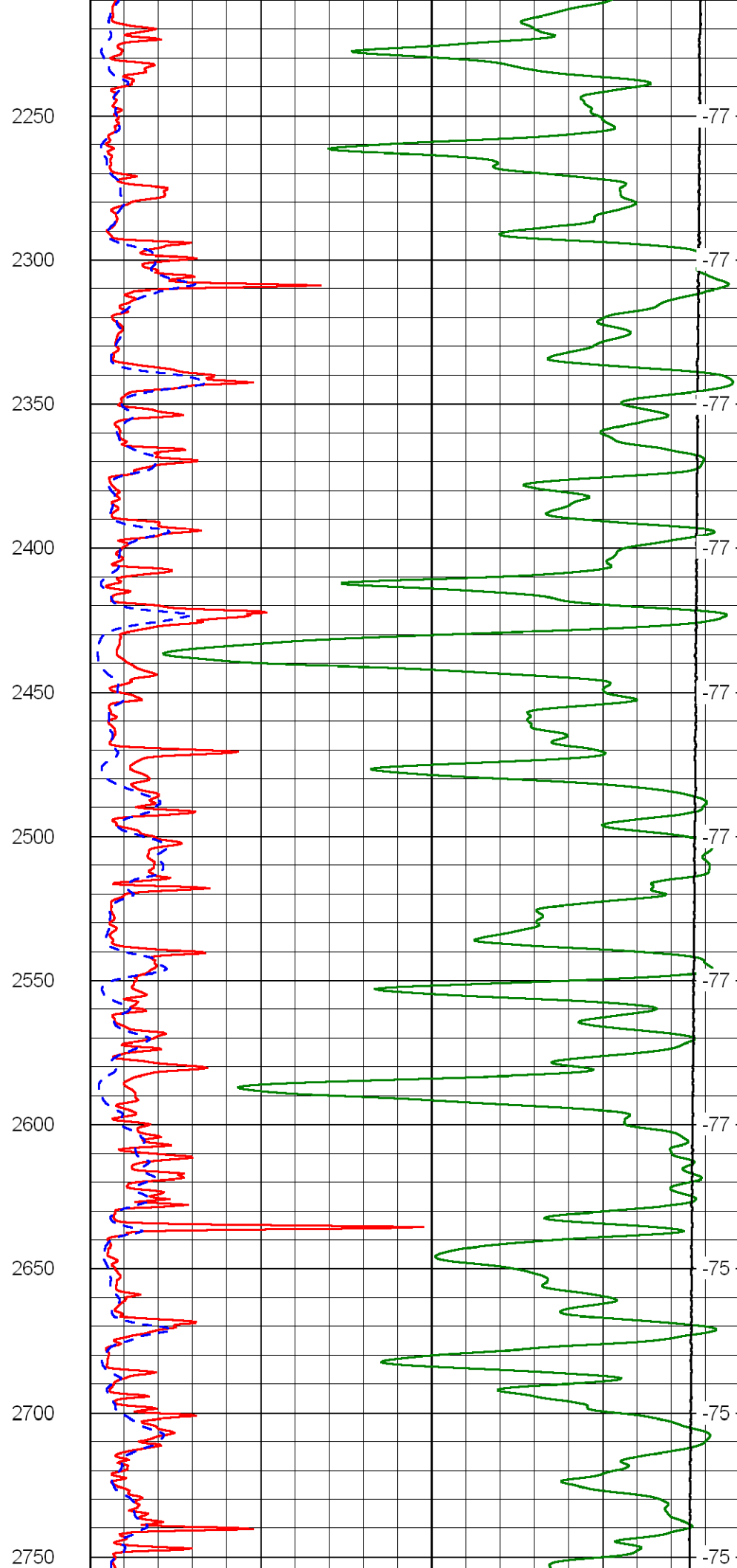
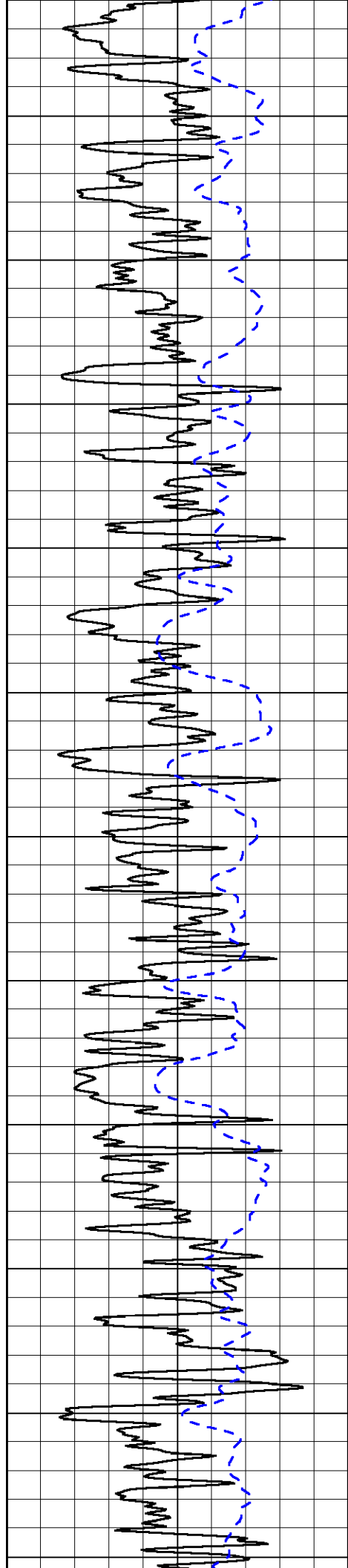
15000 Line Tension 0

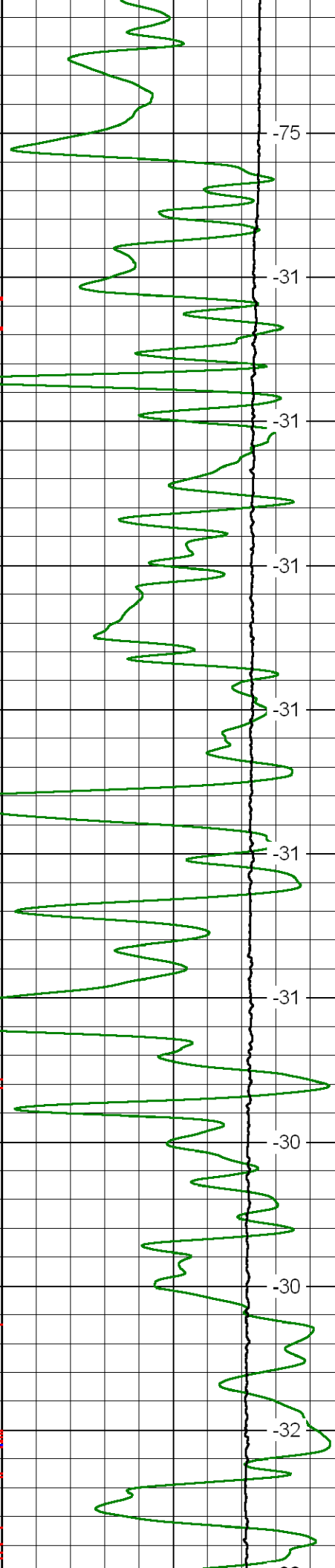
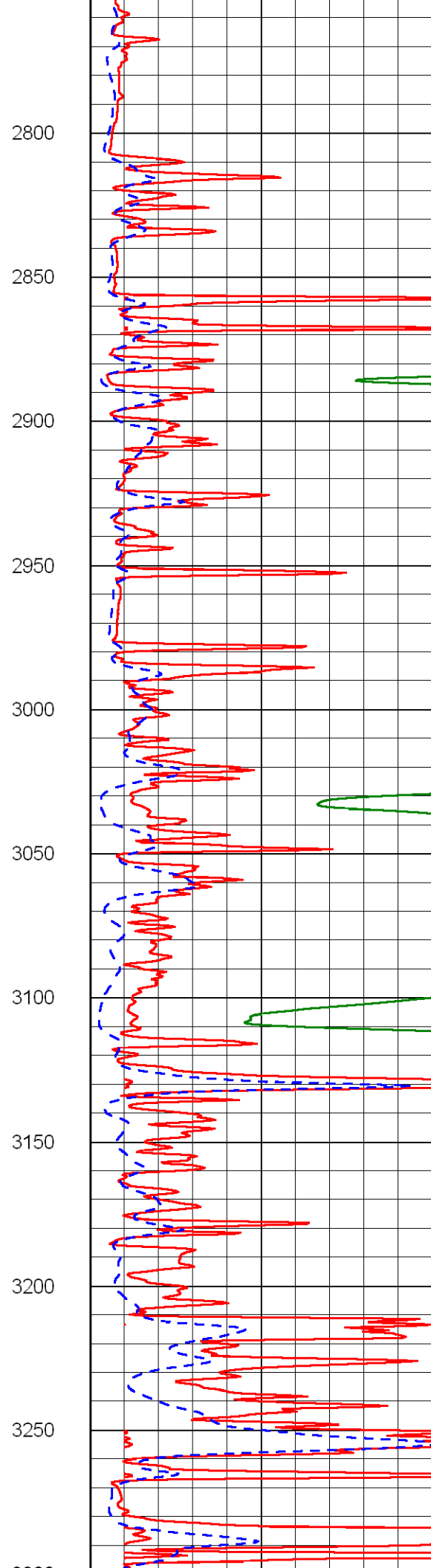
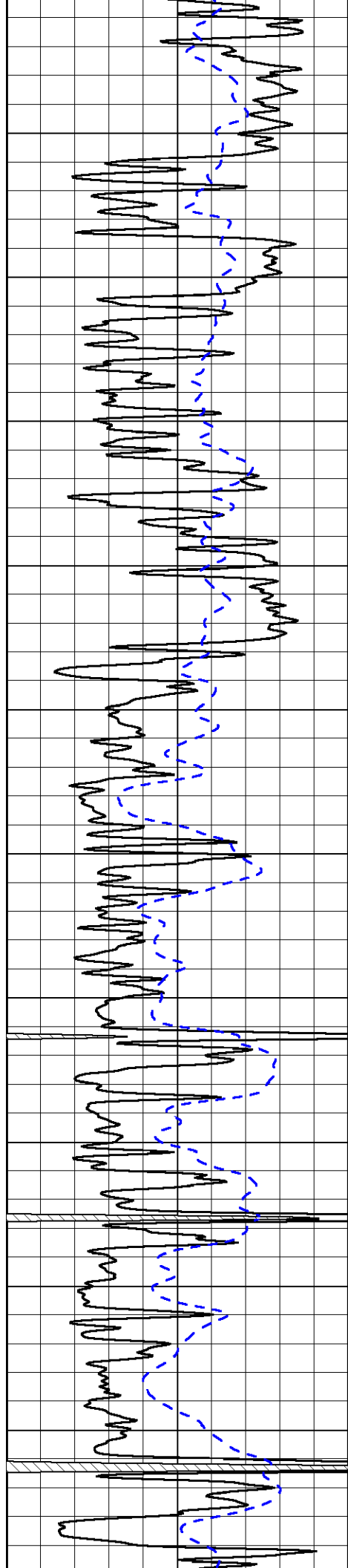
50 Shallow Resistivity 500

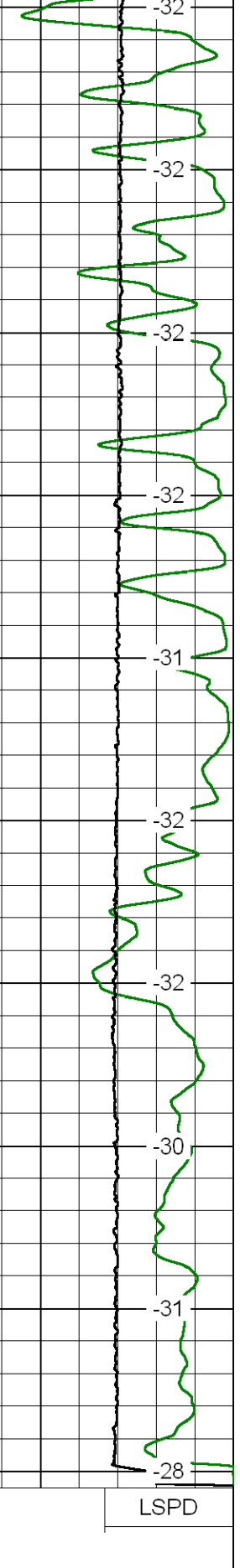
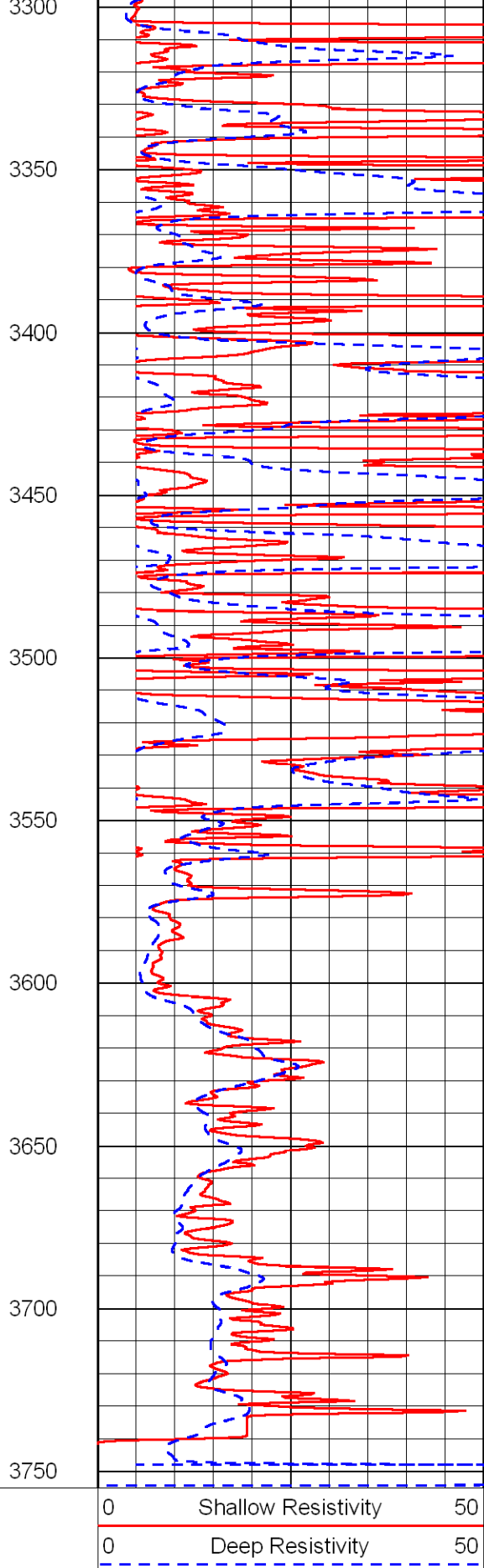
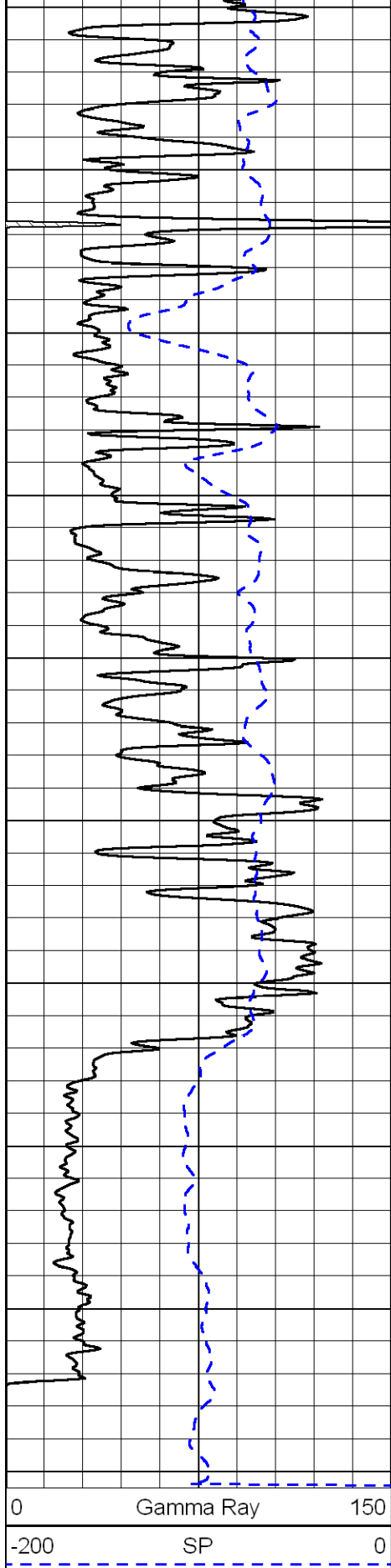
50 Deep Resistivity 500











0 150

-200 0

0 50

0 50

1000 Conductivity 0

15000 Line Tension 0

50 Shallow Resistivity 500

50 Deep Resistivity 500