



Pioneer Energy Services

Microresistivity Log

API No.	15-051-26,311-00-00		
Company	TDL, Inc.		
Well	Irvin Trust No. 2		
Field	Unnamed		
County	Ellis	State	Kansas
Location	410' FSL & 2035' FWL		
Sec:	13	Twp:	15 S Rge: 19 W
Permanent Datum	Ground Level	Elevation 2007	
Log Measured From	Kelly Bushing	10 Ft. Above Perm. Datum	
Drilling Measured From	Kelly Bushing		
		Other Services CNL/CDL DIL	Elevation K.B. 2017 D.F. 2007 G.L. 2007

Date	8/15/2012
Run Number	Two
Depth Driller	3750
Depth Logger	3749
Bottom Logged Interval	3748
Top Log Interval	2900
Casing Driller	8.625 @ 1205
Casing Logger	1202
Bit Size	7.875
Type Fluid in Hole	Chemical
Salinity, ppm CL	2800
Density / Viscosity	8.9 58
pH / Fluid Loss	10.5 7.8
Source of Sample	Flowline
Rm @ Meas. Temp	.50 @ 70
Rmf @ Meas. Temp	.38 @ 70
Rmc @ Meas. Temp	.68 @ 70
Source of Rmf / Rmc	Charts
Rm @ BHT	.31 @ 114
Operating Rig Time	3 1/2 Hours
Max Rec. Temp. F	114
Equipment Number	17
Location	Hays
Recorded By	D. Martin
Witnessed By	Tom Denning

<<< Fold Here >>>

All interpretations are opinions based on inferences from electrical or other measurements and we cannot and do not guarantee the accuracy or correctness of any interpretation, and we shall not, except in the case of gross or willful negligence on our part, be liable or responsible for any loss, costs, damages, or expenses incurred or sustained by anyone resulting from any interpretation made by any of our officers, agents or employees. These interpretations are also subject to our general terms and conditions set out in our current Price Schedule.

Comments

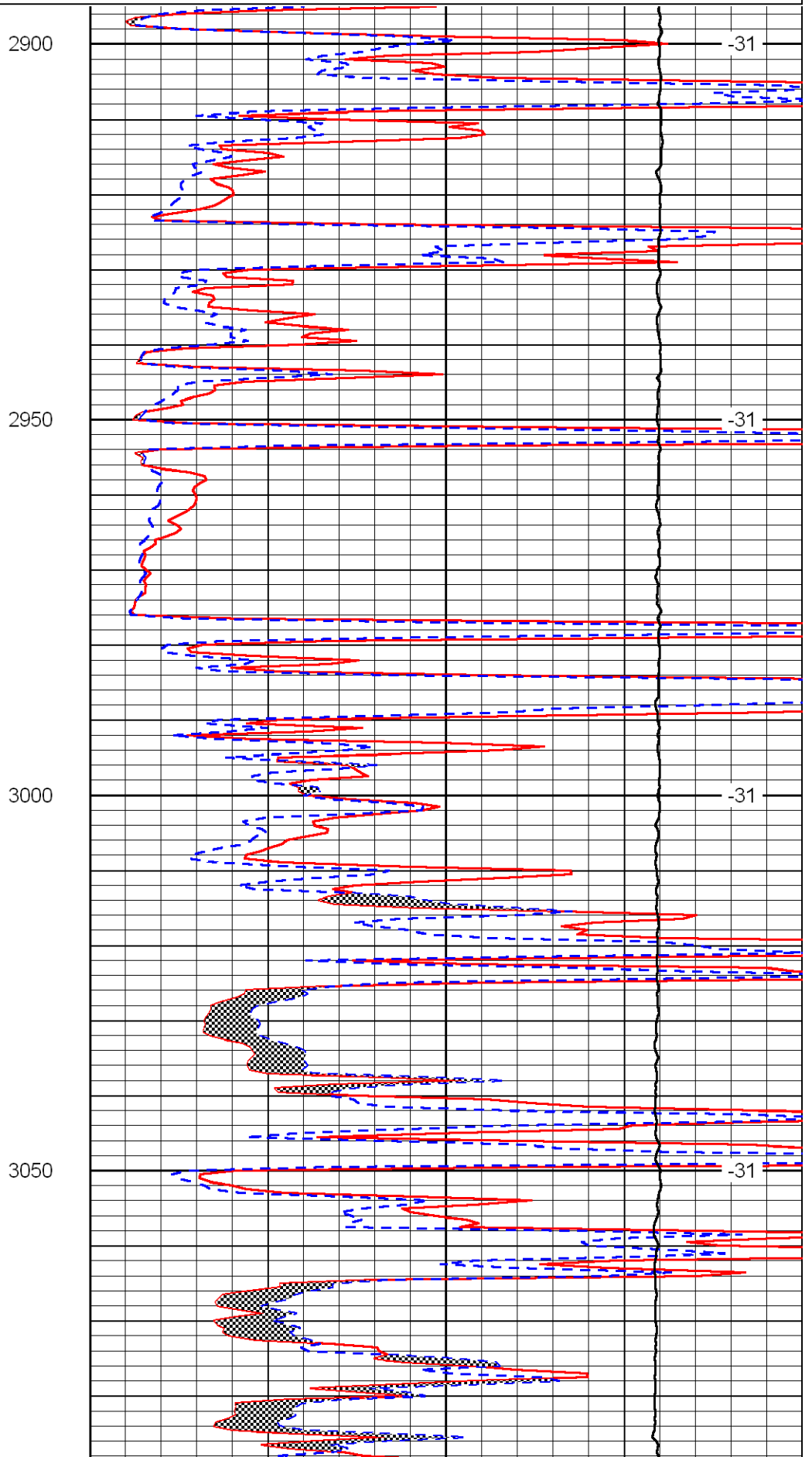
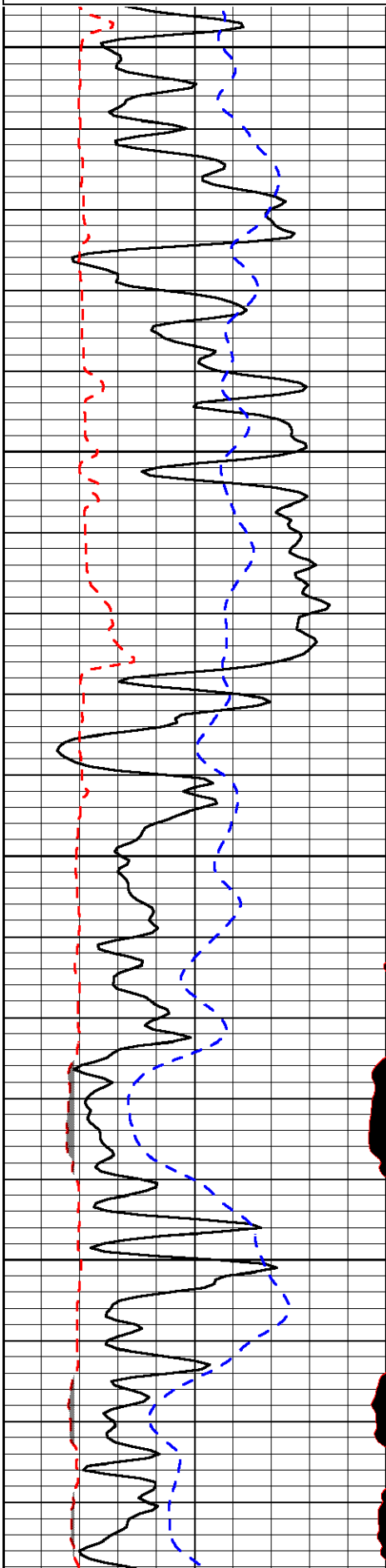
Thank you for using Log-Tech, Inc.
(785) 625-3858

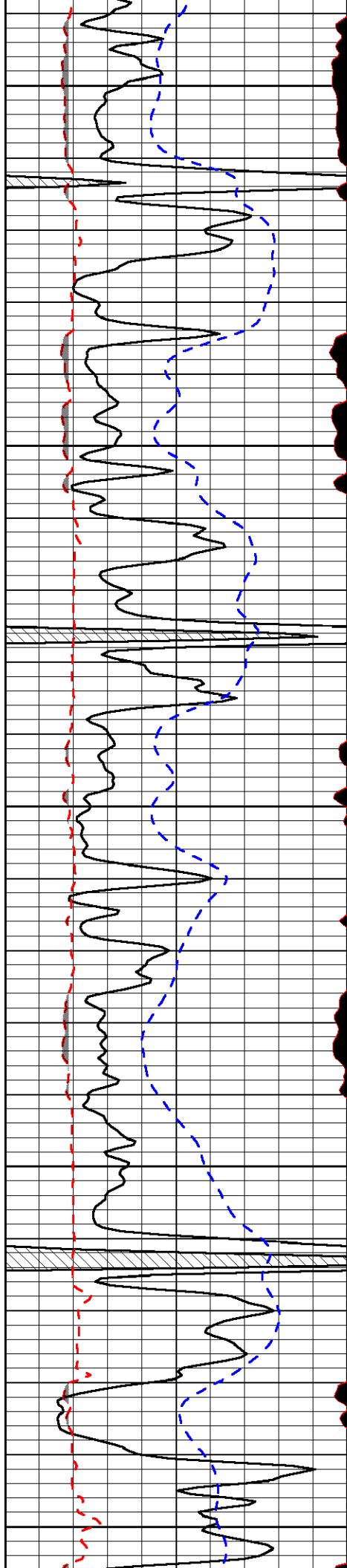
Antonino, KS
3 S, 3/8 E, N Into

Database File: tdhd.db
 Dataset Pathname: DIL/tdstck
 Presentation Format: micro
 Dataset Creation: Wed Aug 15 14:17:34 2012
 Charted by: Depth in Feet scaled 1:240

0	Gamma Ray	150
6	MCAL (GAPI)	16
2.875	Mud Cake (GAPI)	7.875
-200	SP	0

0	Micro Inverse 1 X 1	40
0	Micro Normal 2"	40
10000	Line Weight	0
		LSPD





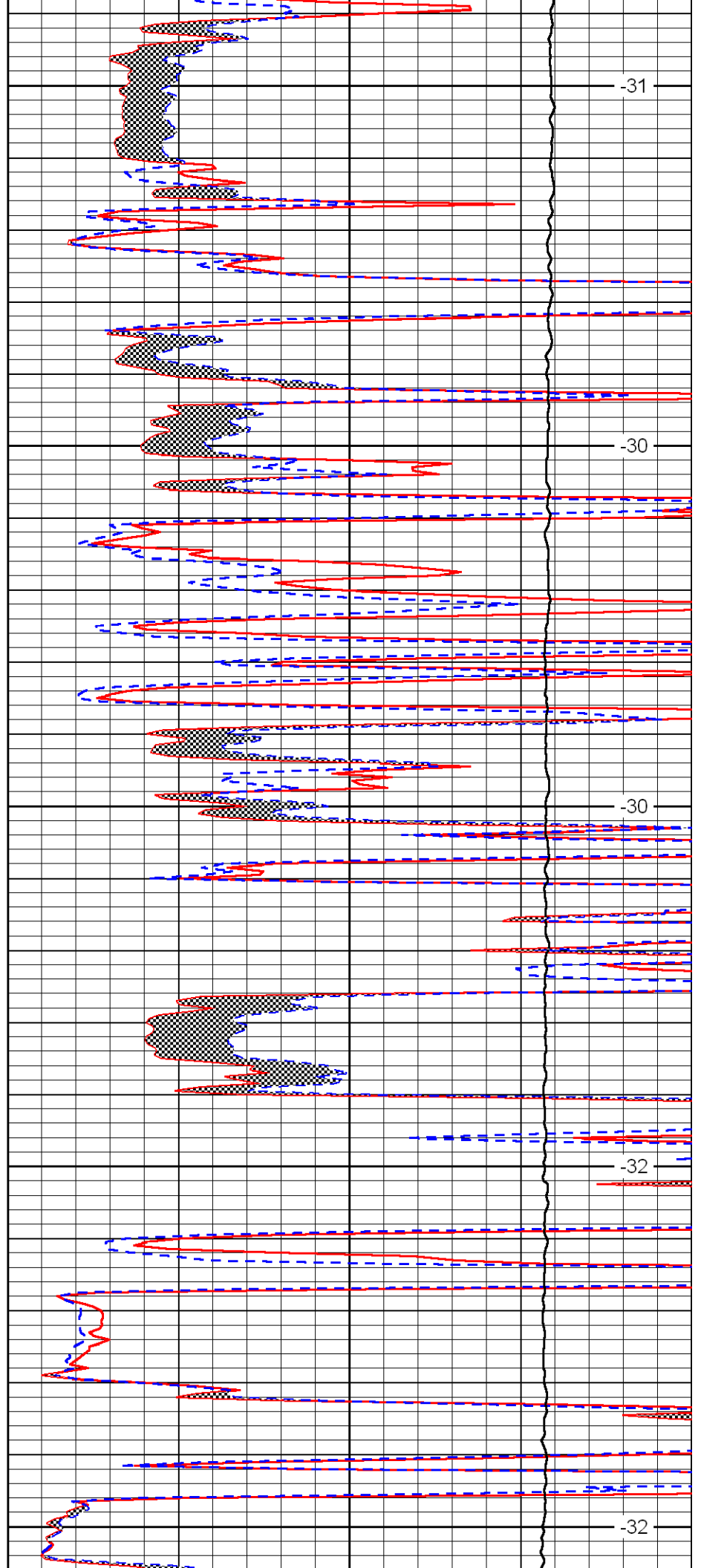
3100

3150

3200

3250

3300



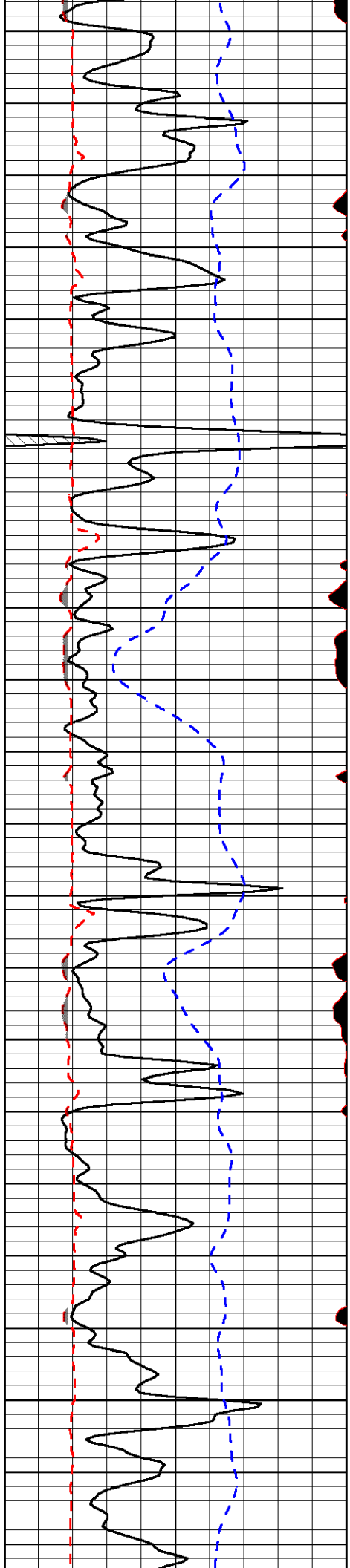
-31

-30

-30

-32

-32

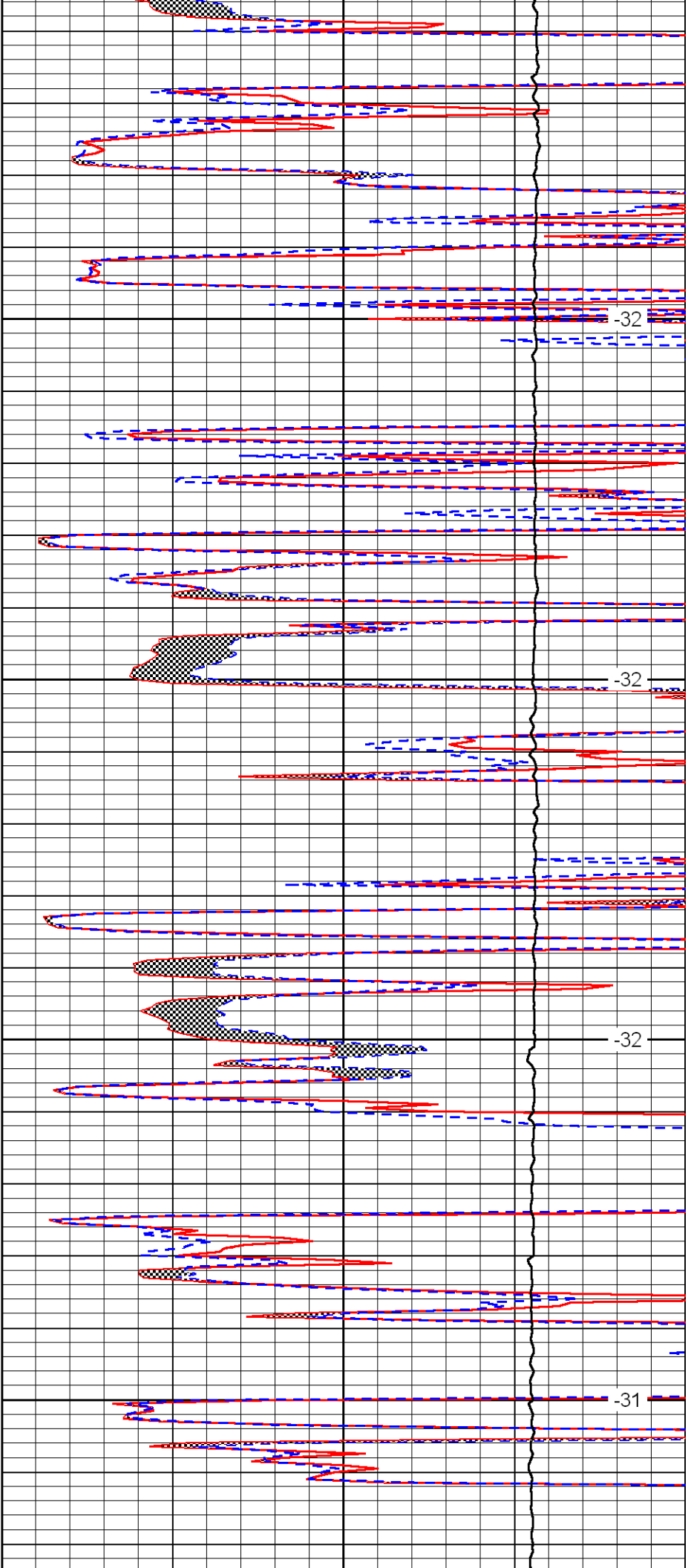


3350

3400

3450

3500

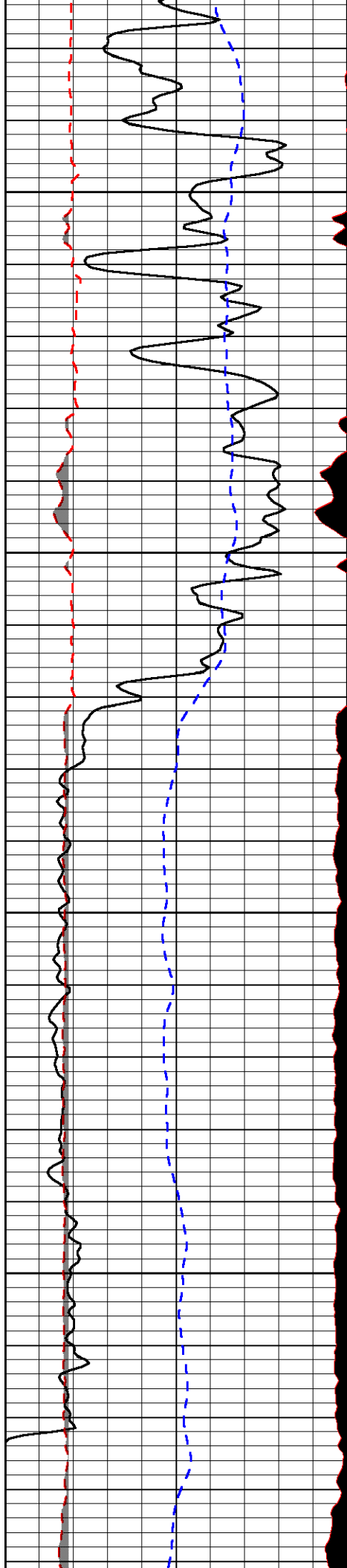


-32

-32

-32

-31

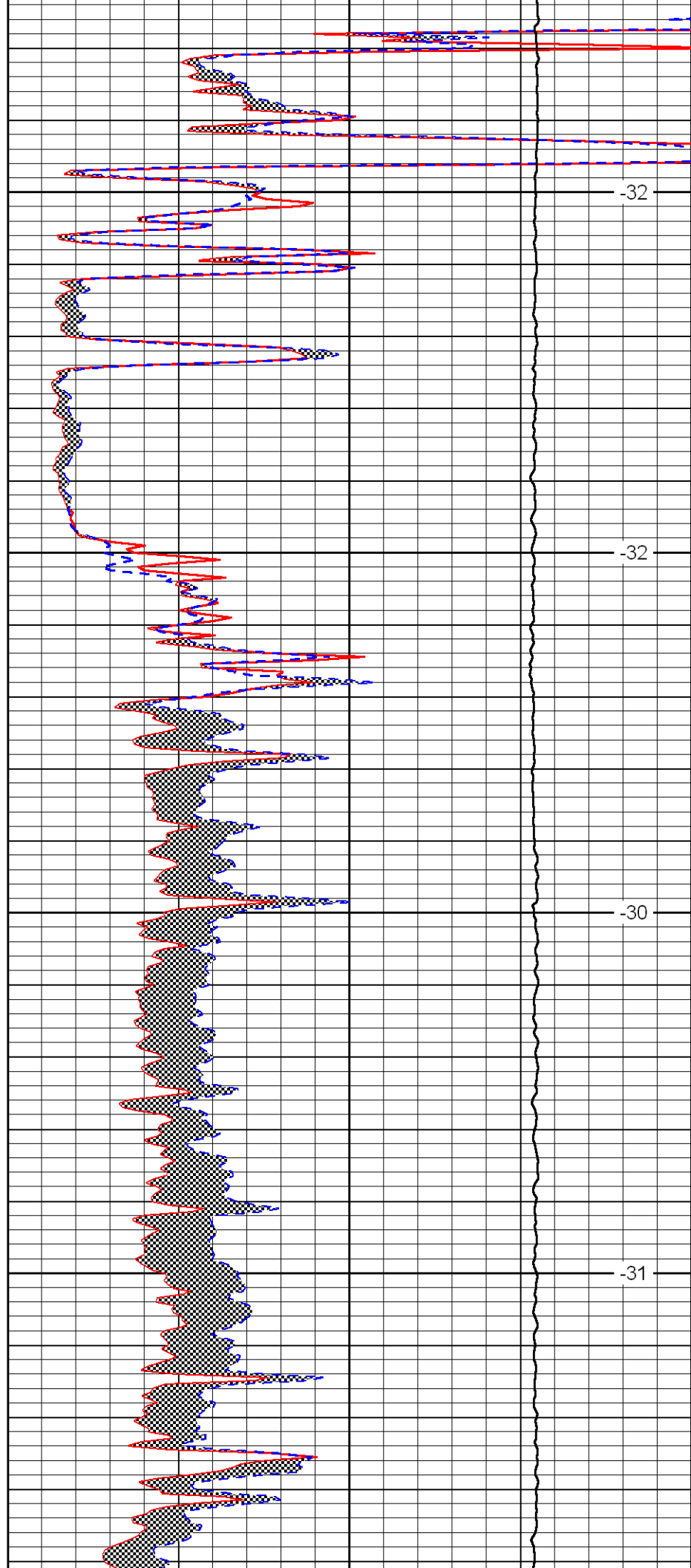


3550

3600

3650

3700

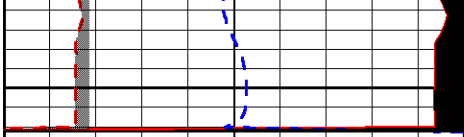


-32

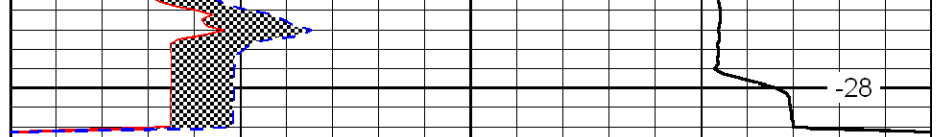
-32

-30

-31



3750



-28

0	Gamma Ray	150
6	MCAL (GAPI)	16
2.875	Mud Cake (GAPI)	7.875
-200	SP	0

0	Micro Inverse 1 X 1	40
0	Micro Normal 2"	40
10000	Line Weight	0

LSPD