



Pioneer Energy Services

Microresistivity Log

API No.	15-193-20,860-00-00	
Company	Norstar Petroleum, Inc.	
Well	Stover-Weed Unit No. 1-27	
Field	Unnamed	
County	Thomas	State
		Kansas
Location	906' FSL & 102' FEL	
Sec: 27	Twp: 10S	Rge: 35W
Permanent Datum	Ground Level	Elevation 3313
Log Measured From	Kelly Bushing	8 Ft. Above Perm. Datum
Drilling Measured From	Kelly Bushing	
		Other Services CNL/CDL DIL
		Elevation K.B. 3321 D.F. 3313 G.L. 3313

Date	9/16/2012
Run Number	Two
Depth Driller	4935
Depth Logger	4935
Bottom Logged Interval	4934
Top Log Interval	3800
Casing Driller	8.625 @ 264
Casing Logger	258
Bit Size	7.875
Type Fluid in Hole	Chemical
Salinity, ppm CL	12100
Density / Viscosity	9.3 62
pH / Fluid Loss	9.5 8.8
Source of Sample	Flowline
Rm @ Meas. Temp	.06 @ 53
Rmf @ Meas. Temp	.05 @ 53
Rmc @ Meas. Temp	.08 @ 53
Source of Rmf / Rmc	Charts
Rm @ BHT	.03 @ 125
Operating Rig Time	4 1/2 Hours
Max Rec. Temp. F	125
Equipment Number	17
Location	Hays
Recorded By	D. Martin
Witnessed By	Bob Elder

<<< Fold Here >>>

All interpretations are opinions based on inferences from electrical or other measurements and we cannot and do not guarantee the accuracy or correctness of any interpretation, and we shall not, except in the case of gross or willful negligence on our part, be liable or responsible for any loss, costs, damages, or expenses incurred or sustained by anyone resulting from any interpretation made by any of our officers, agents or employees. These interpretations are also subject to our general terms and conditions set out in our current Price Schedule.

Comments

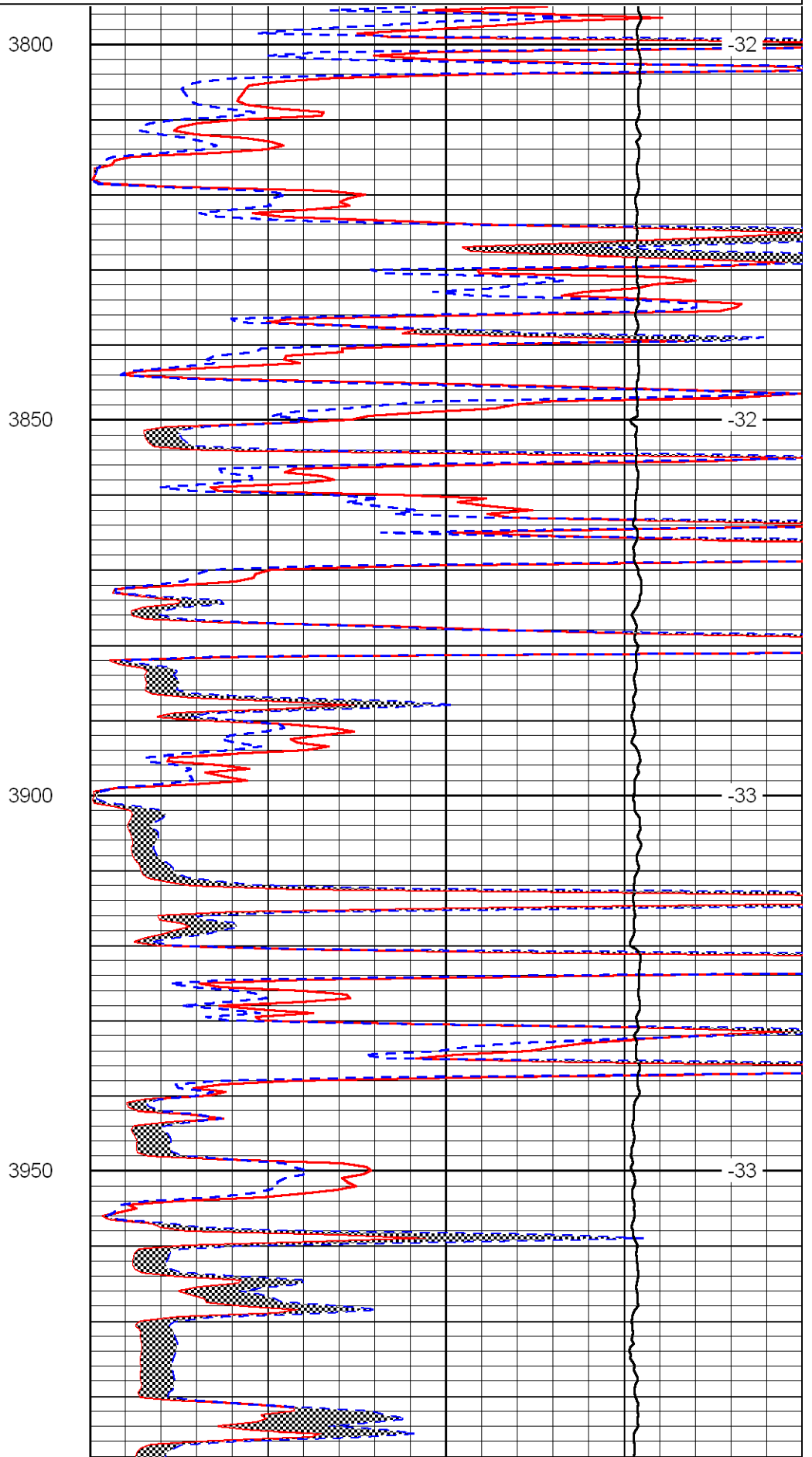
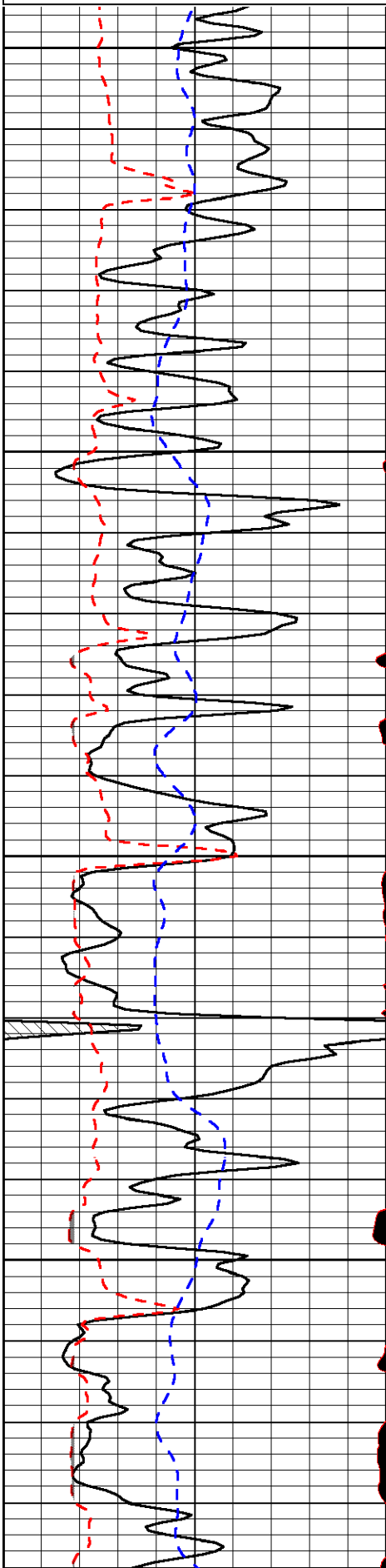
Thank you for using Log-Tech, Inc.
(785) 625-3858

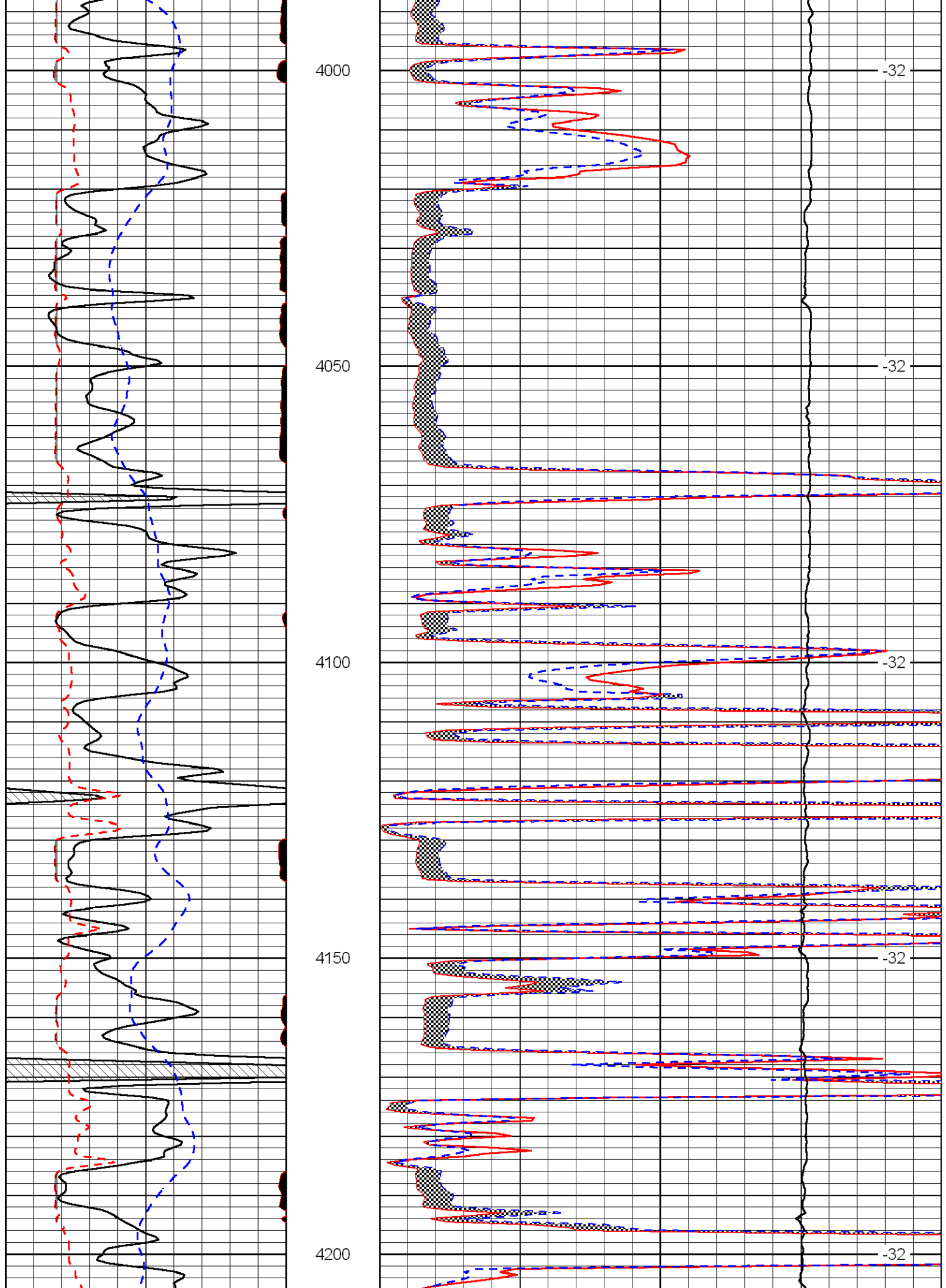
Levant I-70 Exit,
15 S, E, Immediately N Into

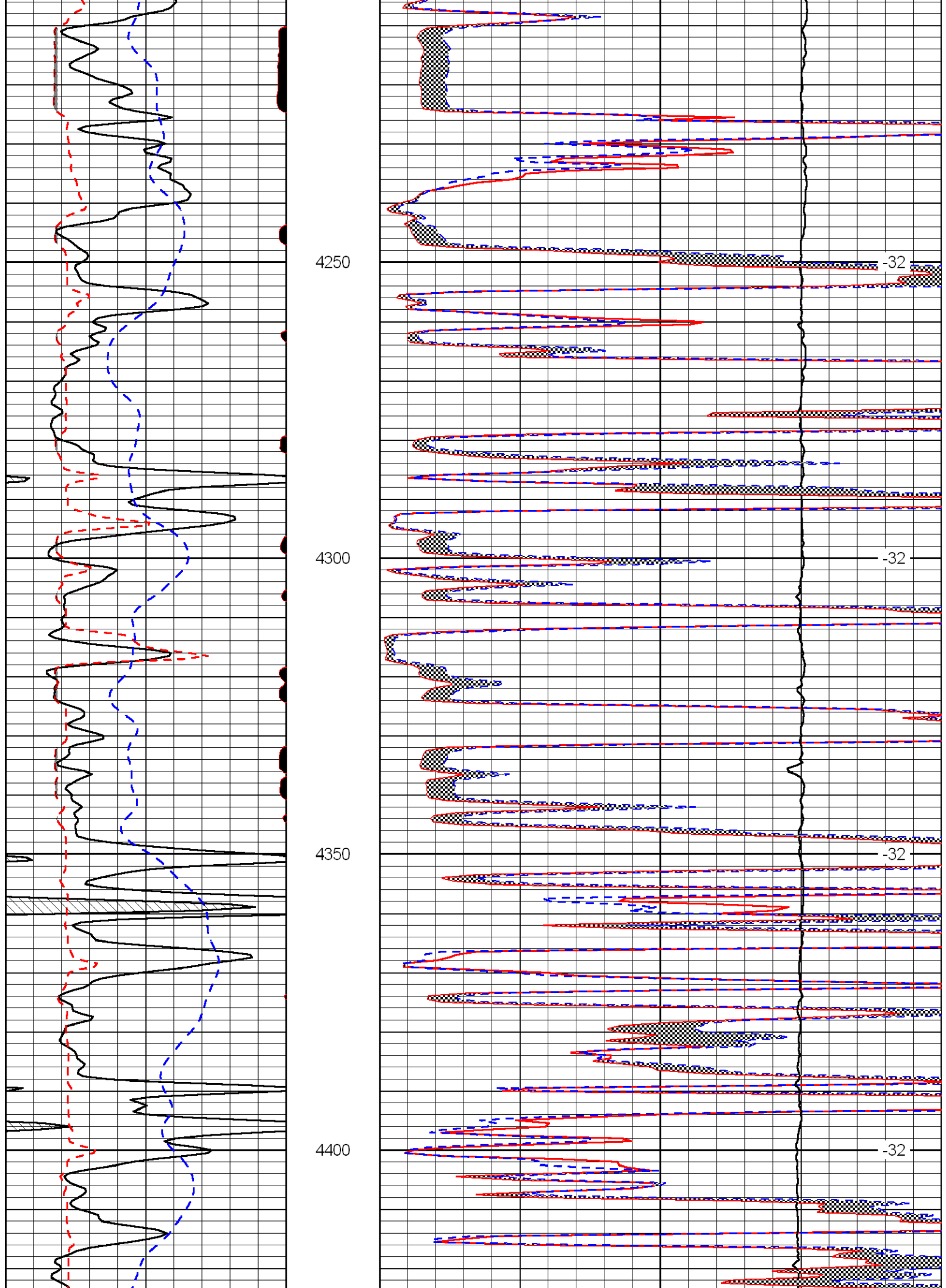
Database File: norshd.db
 Dataset Pathname: DIL/norstk
 Presentation Format: micro
 Dataset Creation: Sun Sep 16 05:49:12 2012
 Charted by: Depth in Feet scaled 1:240

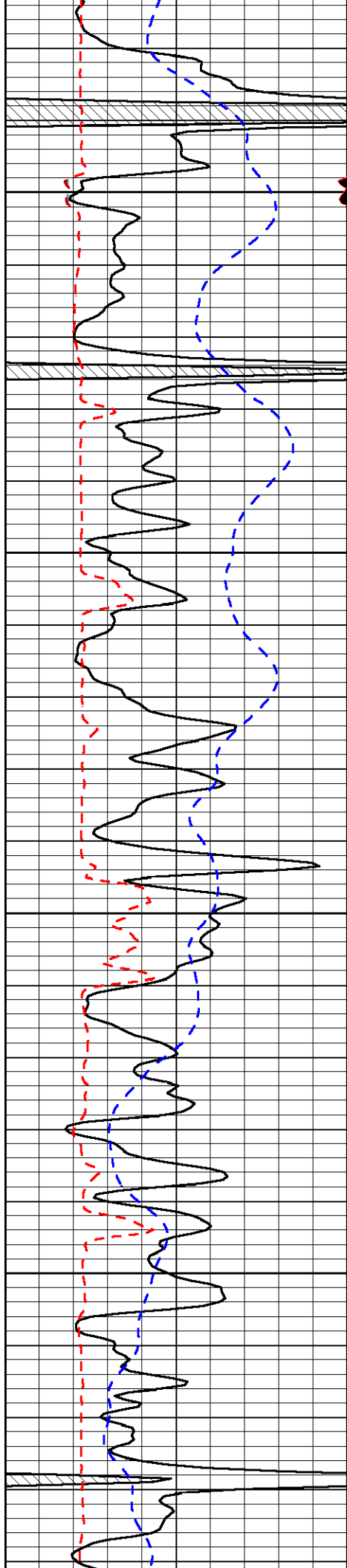
0	Gamma Ray	150
6	MCAL (GAPI)	16
2.875	Mud Cake (GAPI)	7.875
-200	SP	0

0	Micro Inverse 1 X 1	40
0	Micro Normal 2"	40
10000	Line Weight	0
		LSPD







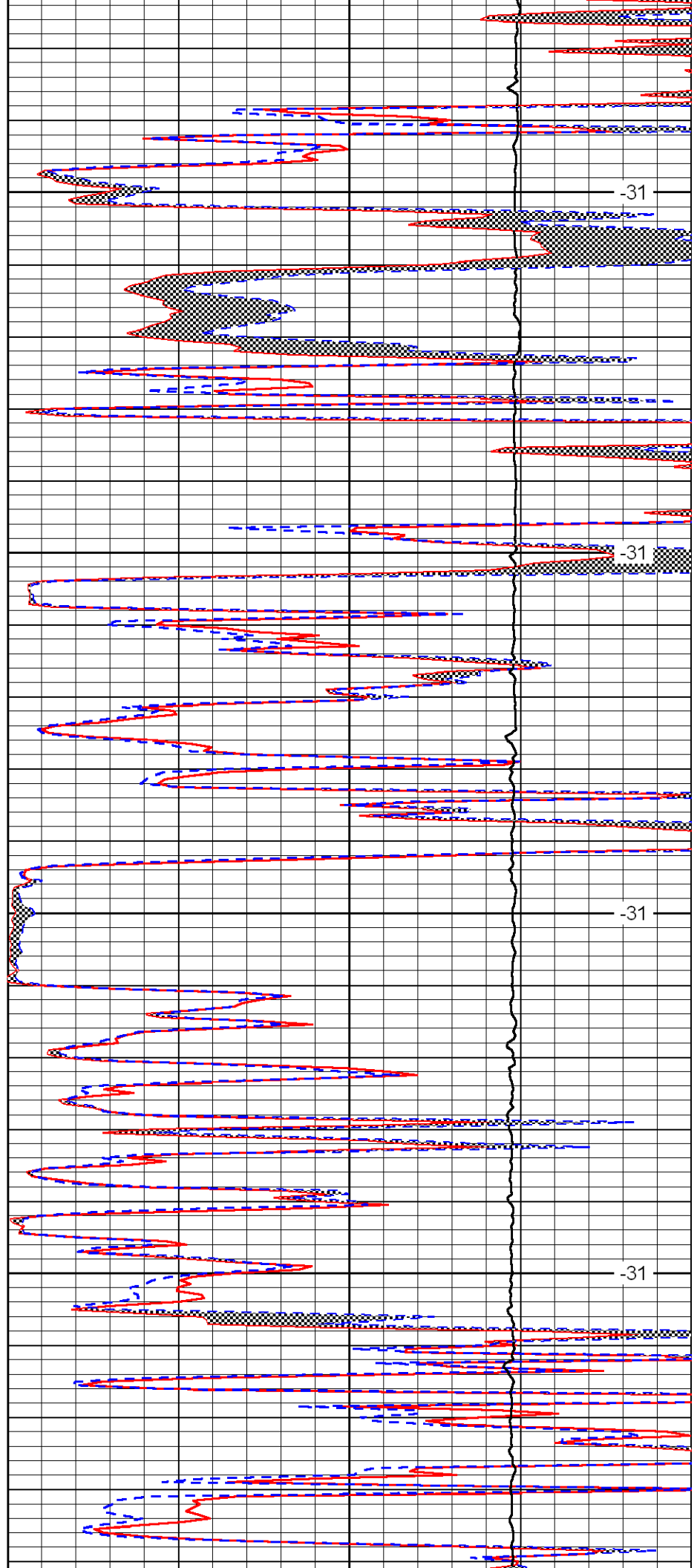


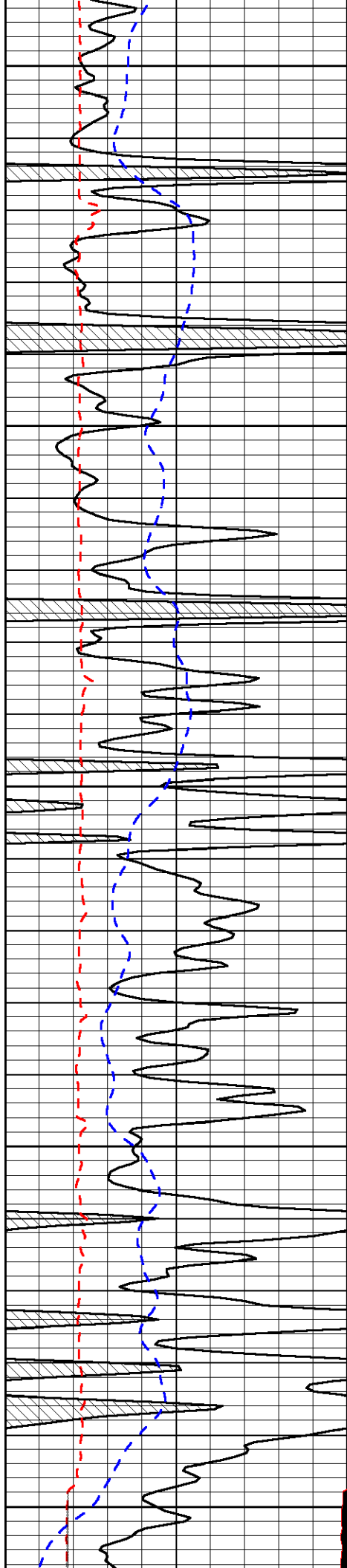
4450

4500

4550

4600





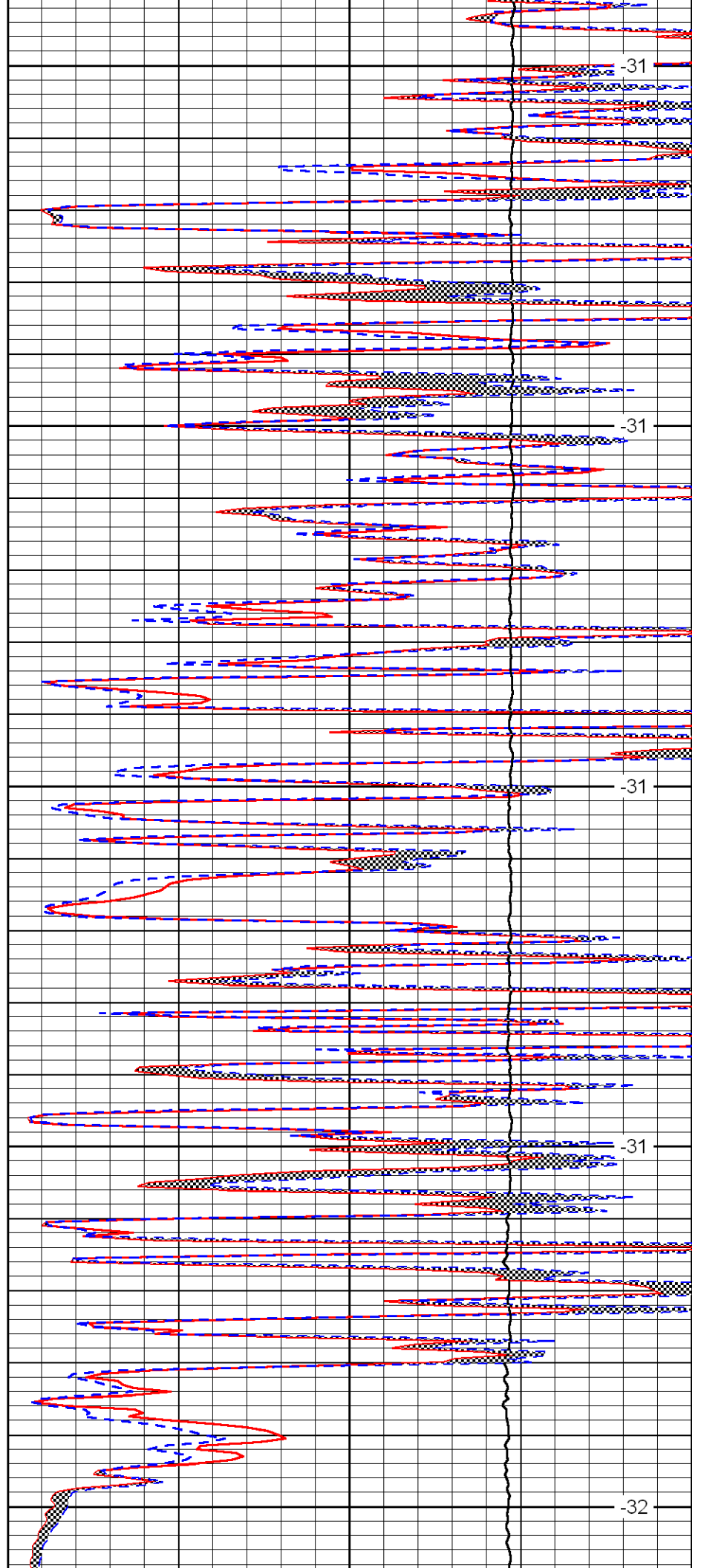
4650

4700

4750

4800

4850



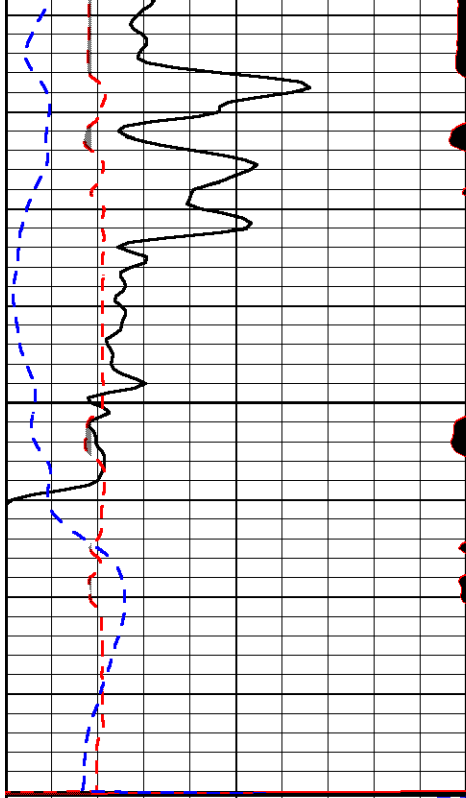
-31

-31

-31

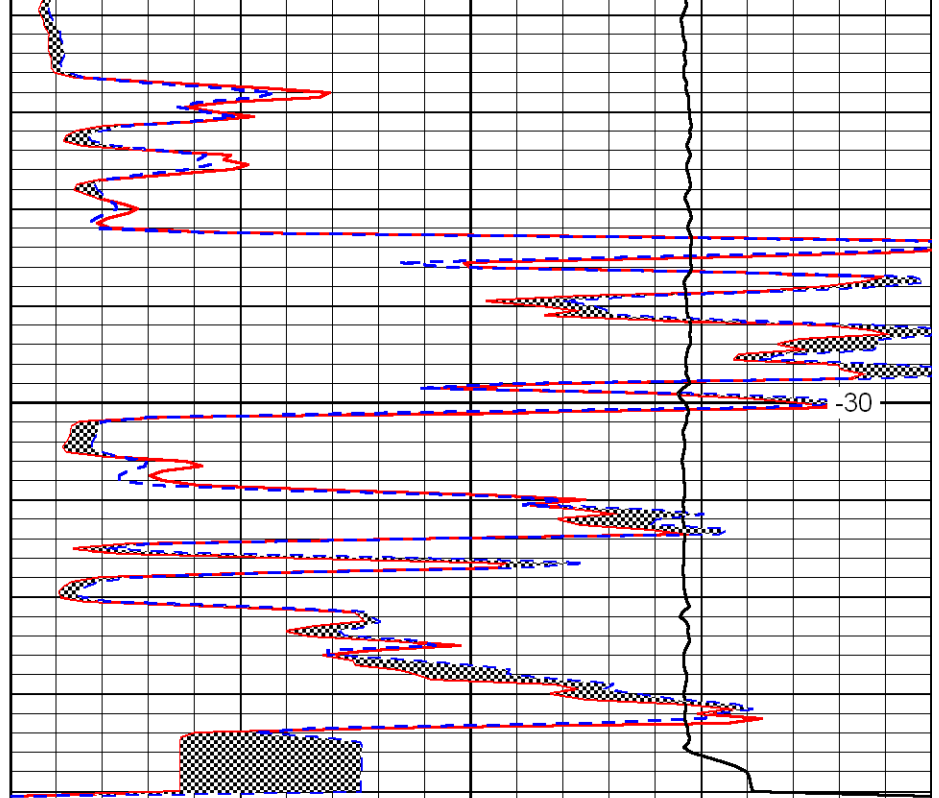
-31

-32



0	Gamma Ray	150
6	MCAL (GAPI)	16
2.875	Mud Cake (GAPI)	7.875
-200	SP	0

4900



0	Micro Inverse 1 X 1	40
0	Micro Normal 2"	40
10000	Line Weight	0

-30

LSPD