



Pioneer Energy Services

Microresistivity Log

15-051-26,469-00-00

API No.

Company **Staab Oil Company**

Well **Mary-Ann #1**

Field **Wildcat**

County **Eljis** State **Kansas**

Location **SE-NE-SW-NE
1960' FNL & 1585' FEL**

Sec: **33** Twp: **12S** Rge: **19W**

Permanent Datum **Ground Level** Elevation **2124**

Log Measured From **Kelly Bushing** 5 Ft. Above Perm. Datum

Drilling Measured From **Kelly Bushing**

Other Services
CNL/CDL
DIL/BHCS

Elevation
K.B. 2129
D.F.
G.L. 2124

Date **2/9/2013**

Run Number **Two**

Depth Driller **3912**

Depth Logger **3916**

Bottom Logged Interval **3915**

Top Log Interval **3100**

Casing Driller **8.625 @ 229**

Casing Logger **228**

Bit Size **7.875**

Type Fluid in Hole **Chemical**

Salinity,ppm CL **10,000**

Density / Viscosity **9.0 46**

pH / Fluid Loss **8.5 12.0**

Source of Sample **Flowline**

Rm @ Meas. Temp **.30 @ 70**

Rmf @ Meas. Temp **.23 @ 70**

Rmc @ Meas. Temp **.41 @ 70**

Source of Rmf / Rmc **Charts**

Rm @ BHT **.18 @ 115**

Operating Rig Time **5 Hours**

Max Rec. Temp. F **115**

Equipment Number **15**

Location **Hays**

Recorded By **J. Hennickson**

Witnessed By **Randy Kilian**

Recorded By **D. Kerr**

Witnessed By **Frank Staab**

<<< Fold Here >>>

All interpretations are opinions based on inferences from electrical or other measurements and we cannot and do not guarantee the accuracy or correctness of any interpretation, and we shall not, except in the case of gross or willful negligence on our part, be liable or responsible for any loss, costs, damages, or expenses incurred or sustained by anyone resulting from any interpretation made by any of our officers, agents or employees. These interpretations are also subject to our general terms and conditions set out in our current Price Schedule.

Comments

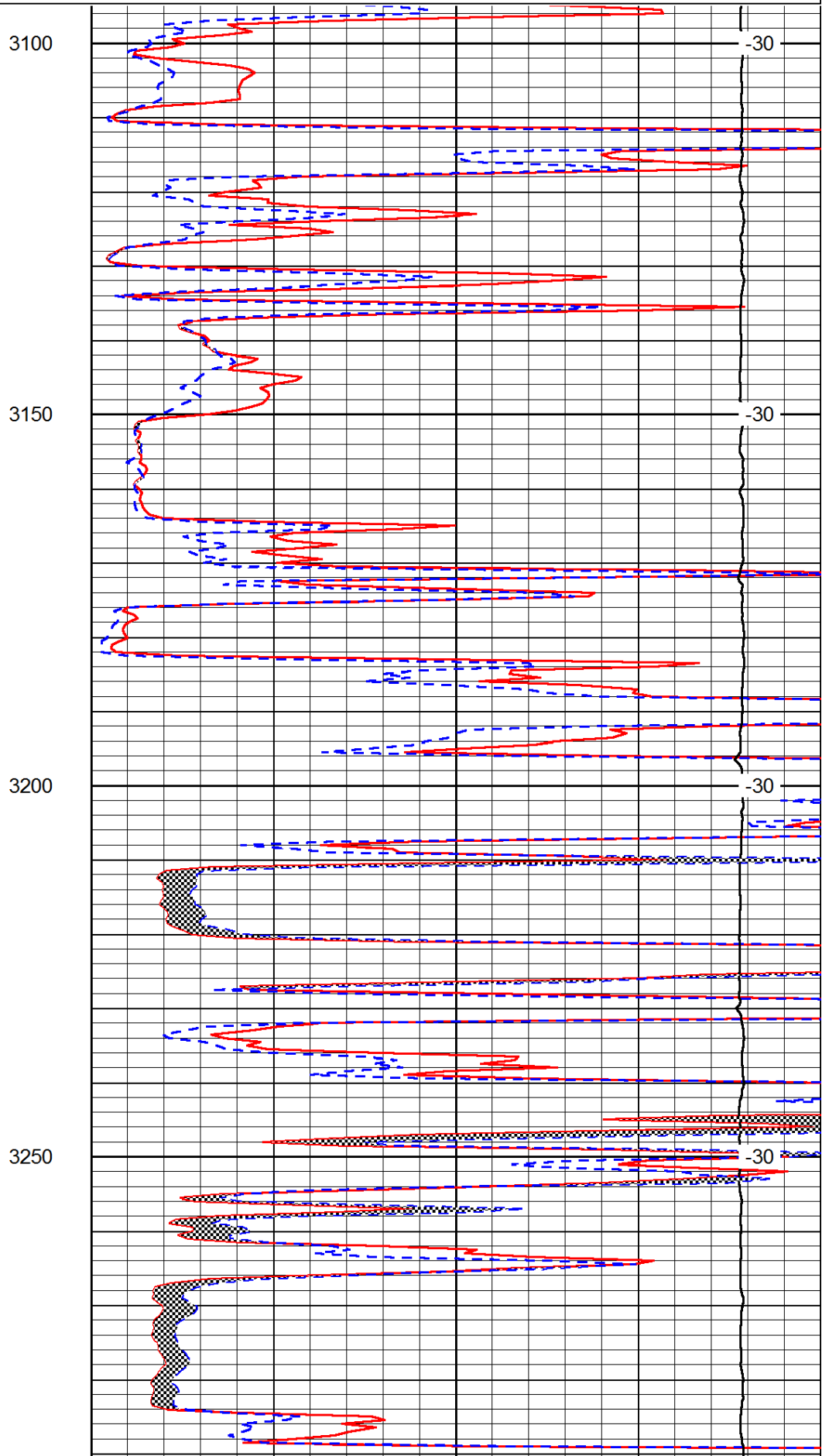
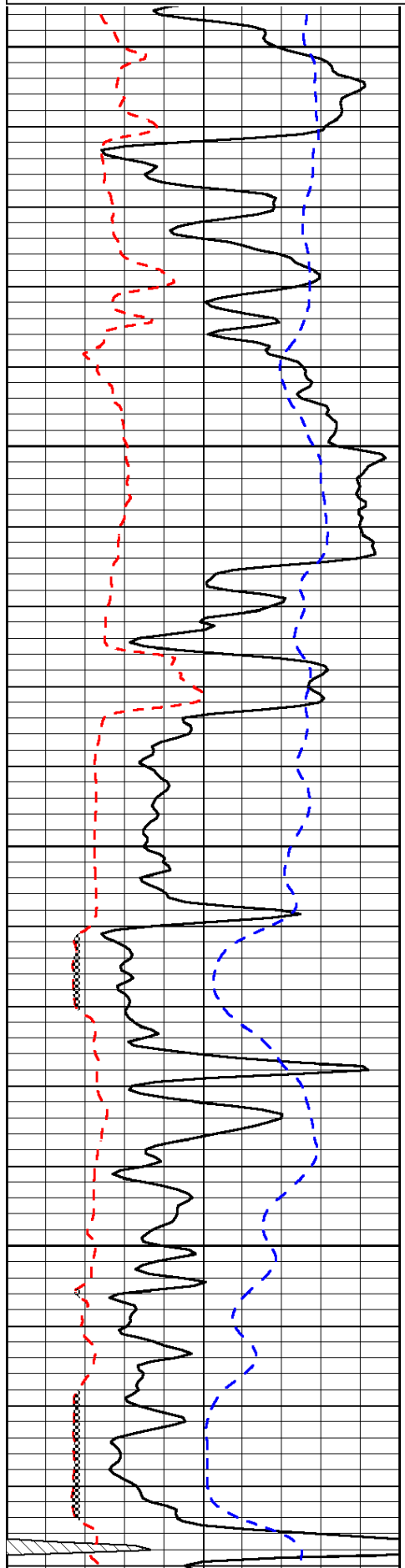
Thank you for using Pioneer Energy Services
www.pioneerenergy.com
 785 625 3858
 Yocemento KS
 3 North, West Into

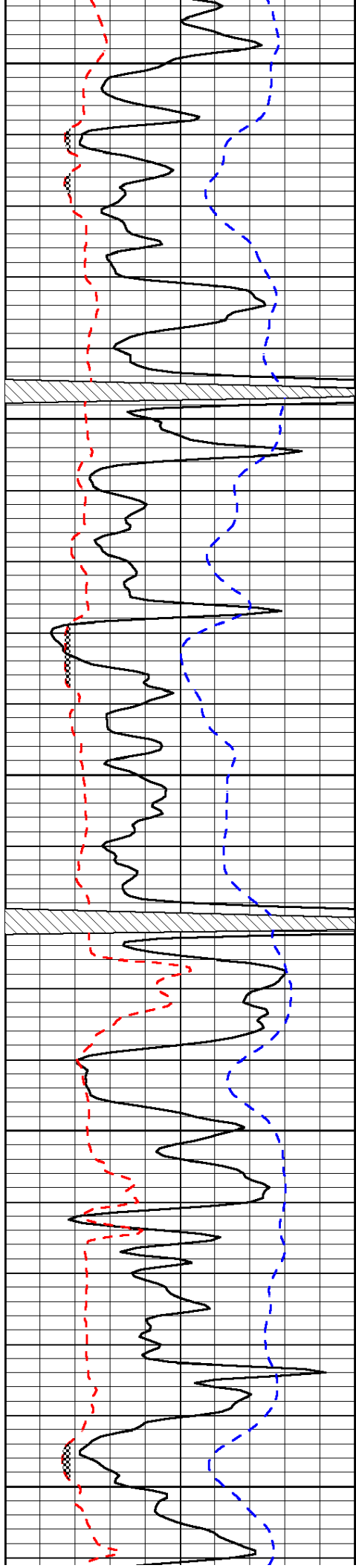
Database File: c:\warrior\data\staab_mary-ann #1\staab_oil_mary_ann_1hd.db
 Dataset Pathname: DIL\stabstk
 Presentation Format: micro
 Dataset Creation: Sat Feb 09 13:50:36 2013
 Charted by: Depth in Feet scaled 1:240

0	Gamma Ray	150
6	Micro Log Caliper (GAPI)	16
-200	SP (mV)	0

0	Micro Inverse 1 X 1	40
0	Micro Normal 2"	40
15000	Line Weight	0

LSPD





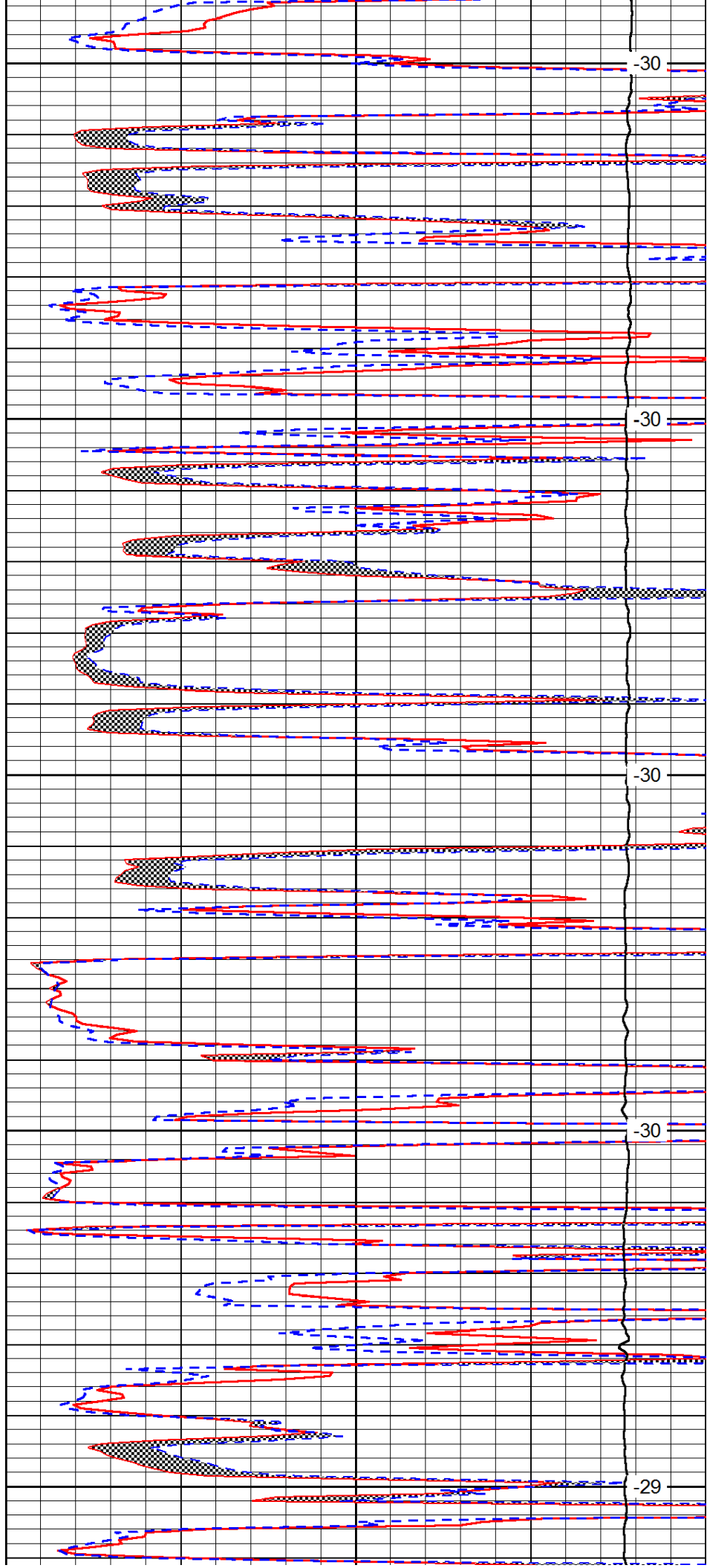
3300

3350

3400

3450

3500



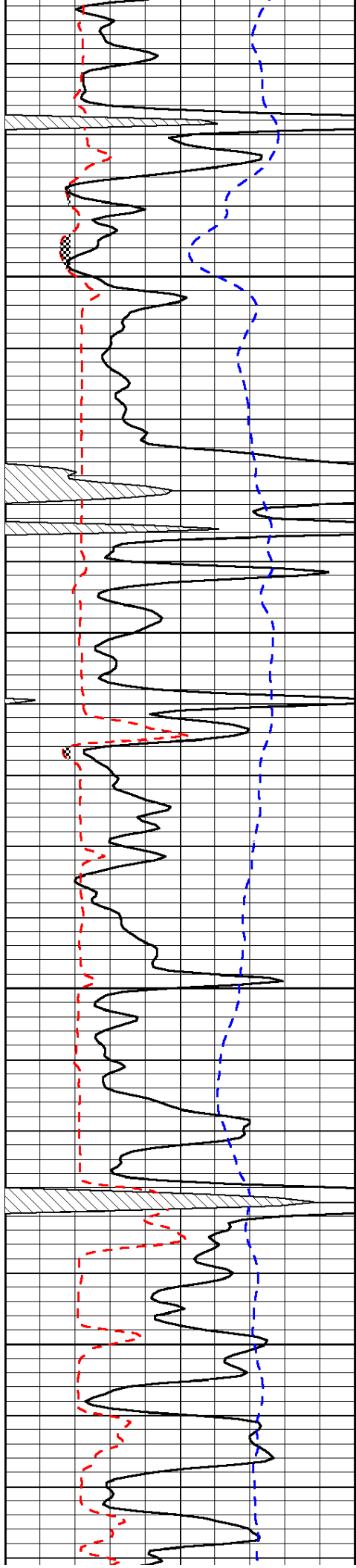
-30

-30

-30

-30

-29

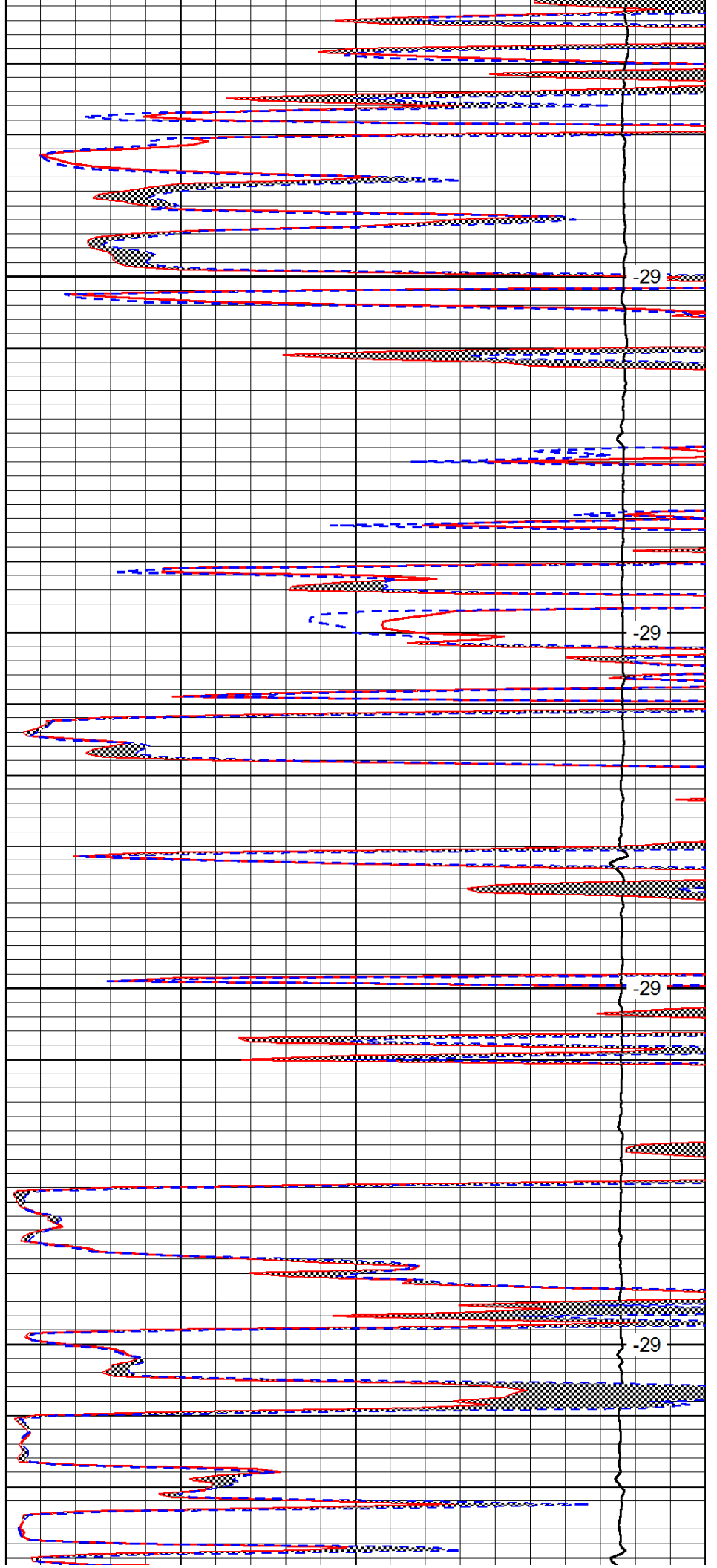


3550

3600

3650

3700



-29

-29

-29

-29

