



Pioneer Energy Services

Borehole Compensated Sonic Log

15-051-26,469-00-00

API No.	15-051-26,469-00-00		
Company	Staab Oil Company	Location	SE-NE-SW-NE 1960' FNL & 1585' FEL
Well	Mary-Ann #1	Sec: 33	Twp: 12S Rge: 19W
Field	Wildcat	Ground Level	Elevation 2124
County	Eljis	Log Measured From	Kelly Bushing 5 Ft. Above Perm. Datum
		Drilling Measured From	Kelly Bushing
		Date	2/9/2013
		Run Number	Two
		Type Log	BHC Sonic
		Depth Driller	3912
		Depth Logger	3916
		Bottom Logged Interval	3905
		Top Logged Interval	200
		Type Fluid In Hole	Chemical
		Salinity, PPM CL	10,000
		Density	9.0
		Level	Full
		Max. Rec. Temp. F	115
		Operating Rig Time	5 Hours
		Equipment -- Location	15 Hays
		Recorded By	J. Henrickson
		Witnessed By	Randy Kilian
			Frank Staab

Borehole Record				Casing Record			
Run No.	Bit	From	To	Size	Wgt.	From	To
1	12.25	00	229	8.625	24#	00	229
2	7.875	229	3912				

<<< Fold Here >>>

All interpretations are opinions based on inferences from electrical or other measurements and we cannot and do not guarantee the accuracy or correctness of any interpretation, and we shall not, except in the case of gross or willful negligence on our part, be liable or responsible for any loss, costs, damages, or expenses incurred or sustained by anyone resulting from any interpretation made by any of our officers, agents or employees. These interpretations are also subject to our general terms and conditions set out in our current Price Schedule.

Comments

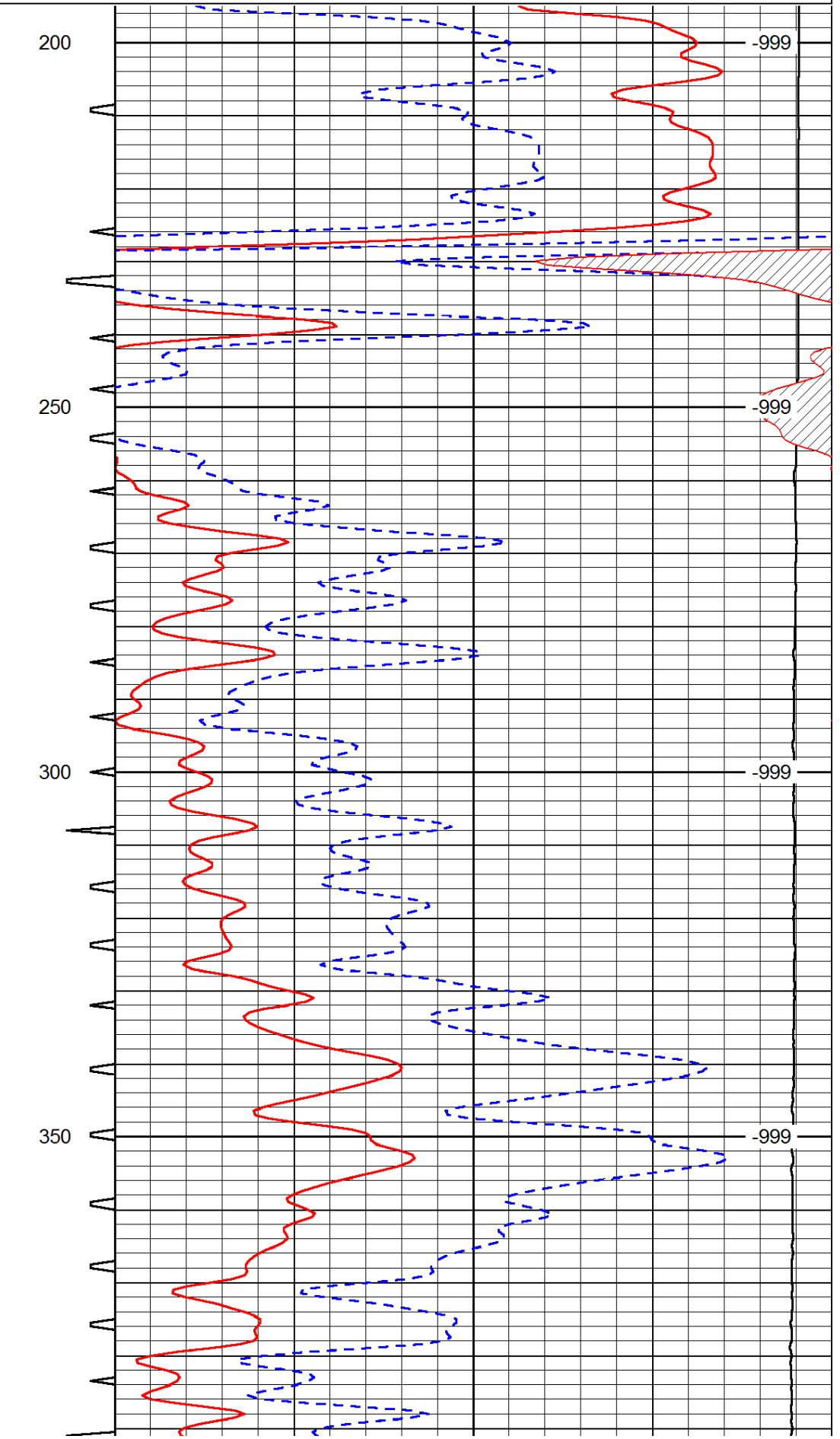
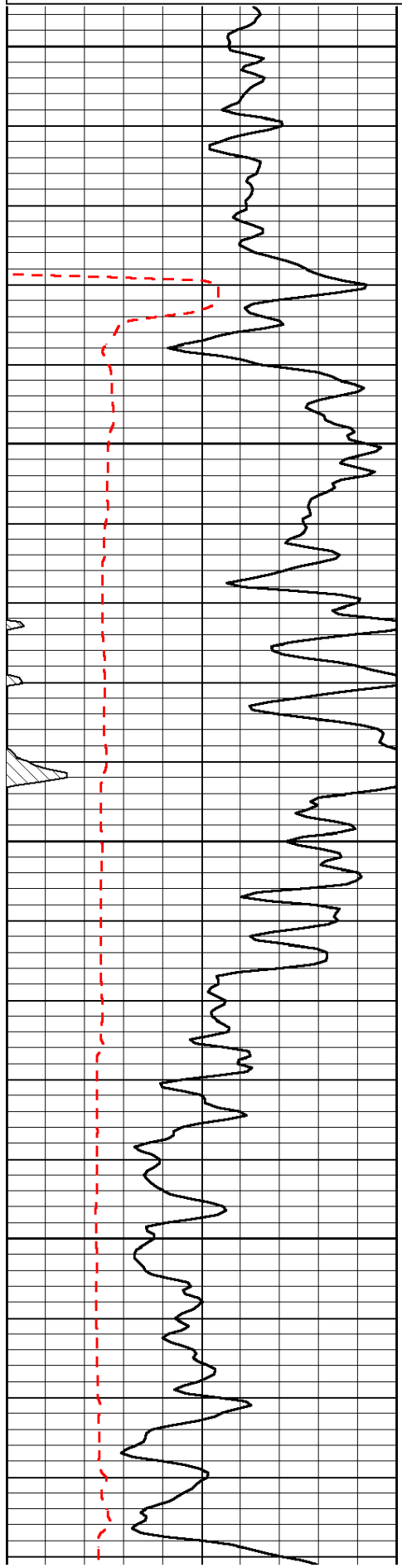
Thank you for using Pioneer Energy Services
www.pioneerenergy.com
 785 625 3858

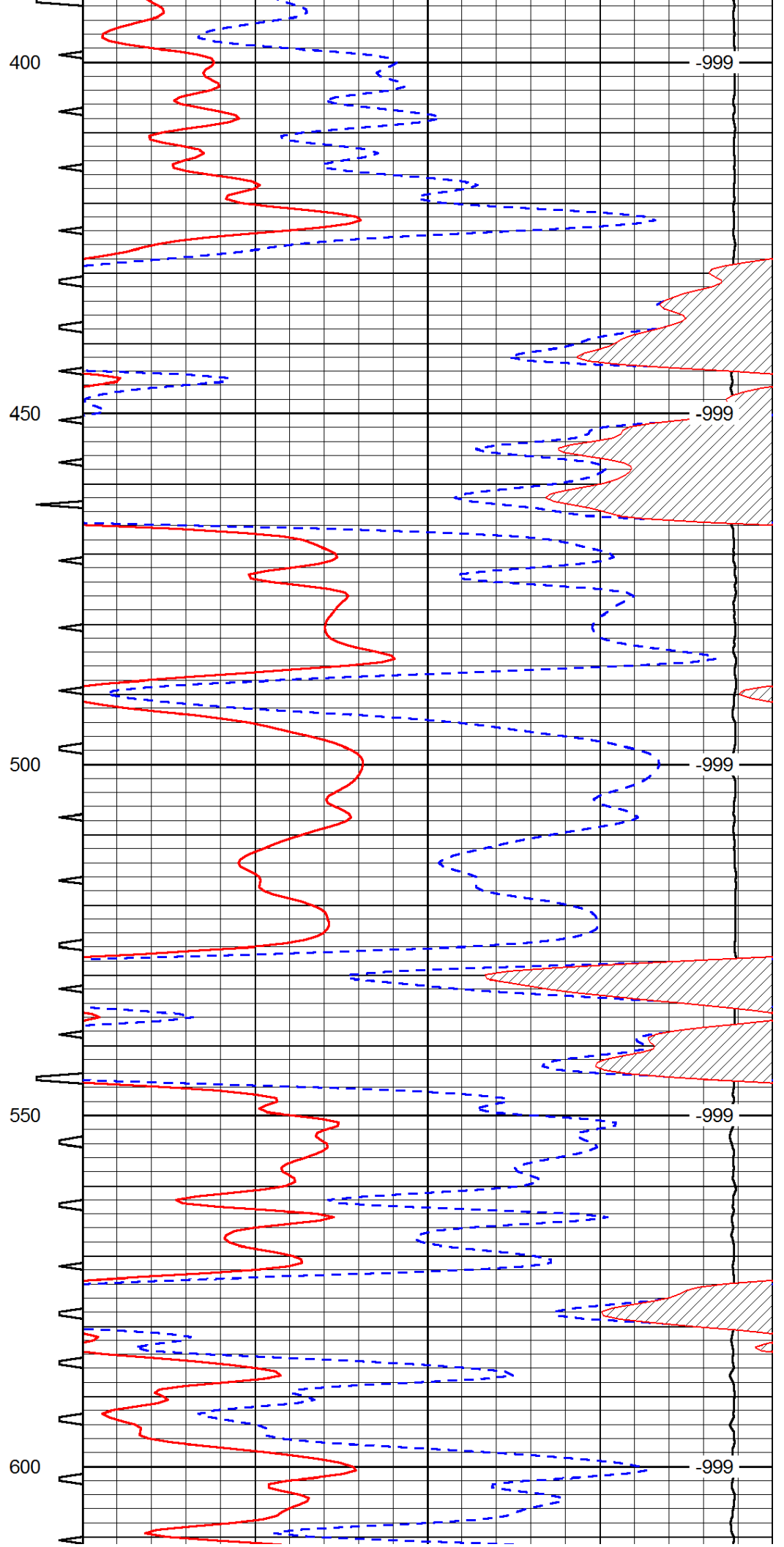
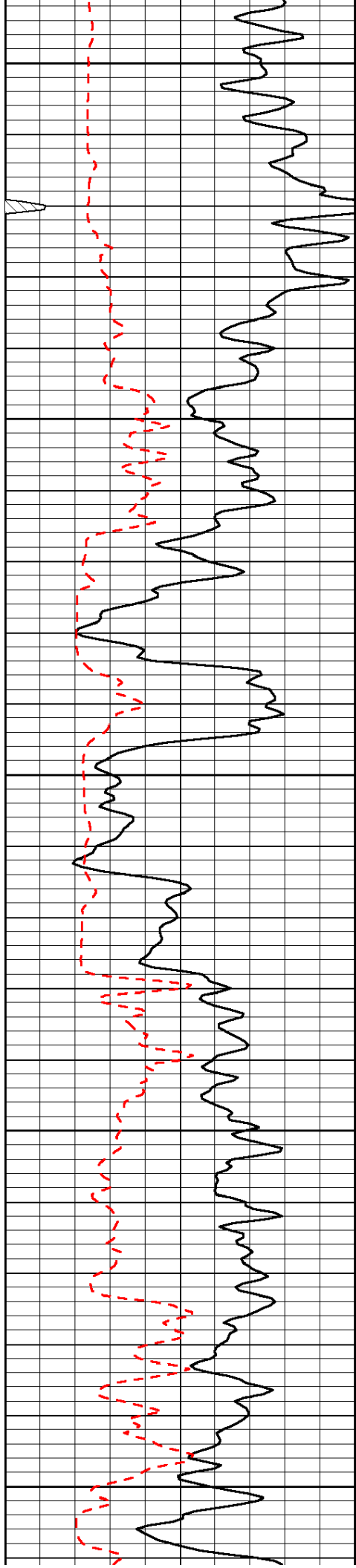
 Yocemento KS
 3 North, West Into

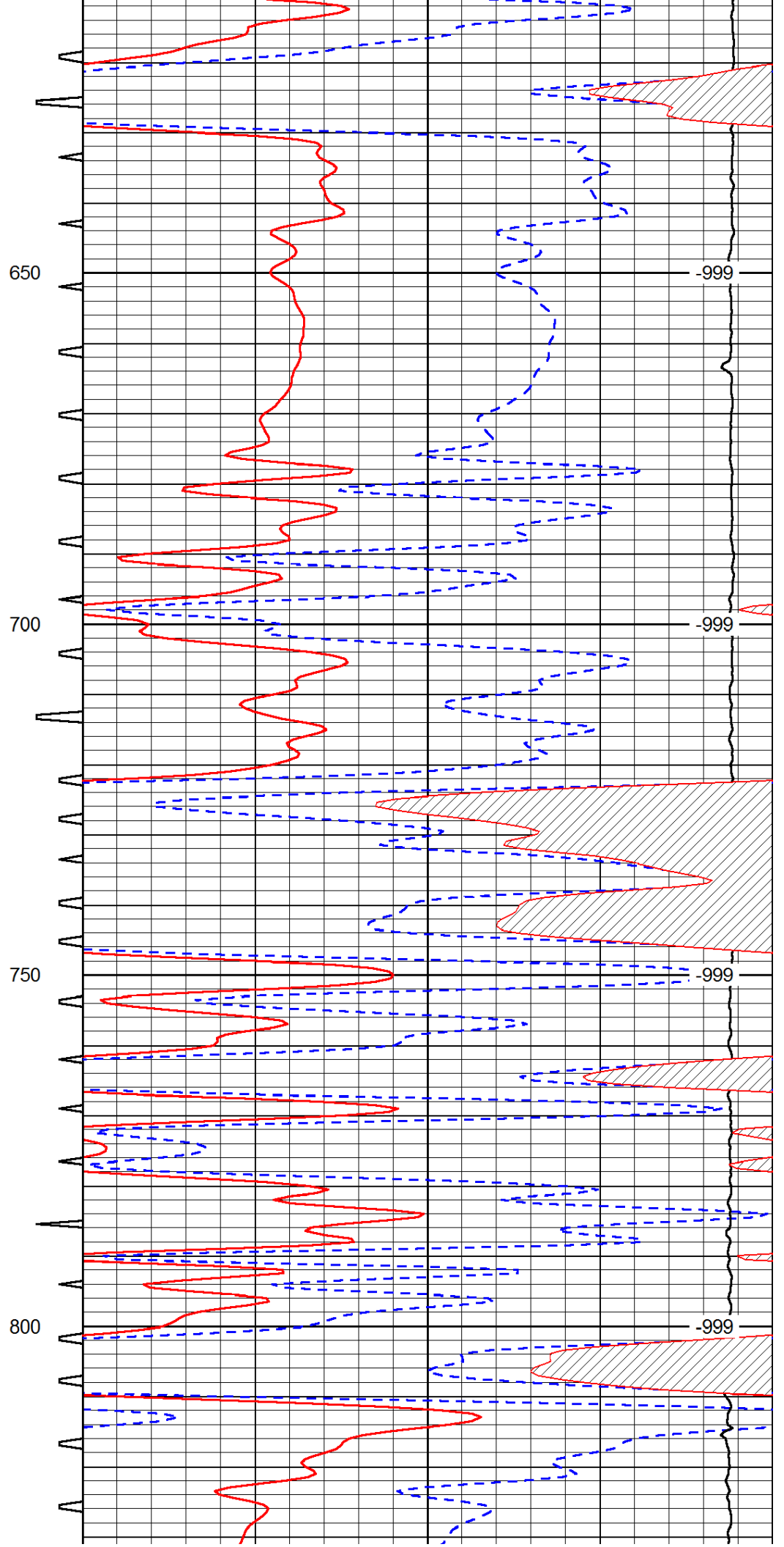
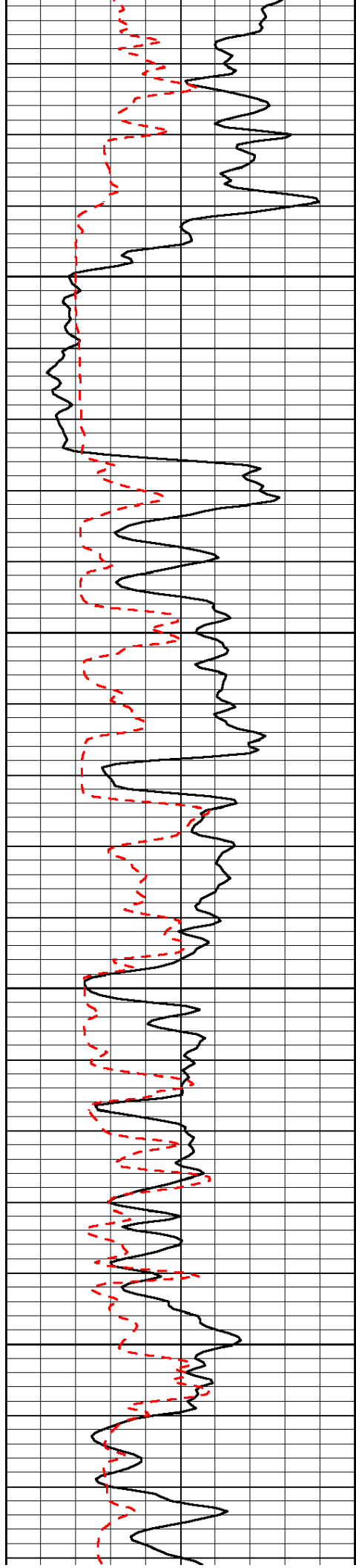
Database File: c:\warrior\data\staab_mary-ann #1\staab_oil_mary_ann_1hd.db
 Dataset Pathname: DIL/stabstk
 Presentation Format: sonic
 Dataset Creation: Sat Feb 09 13:50:36 2013
 Charted by: Depth in Feet scaled 1:240

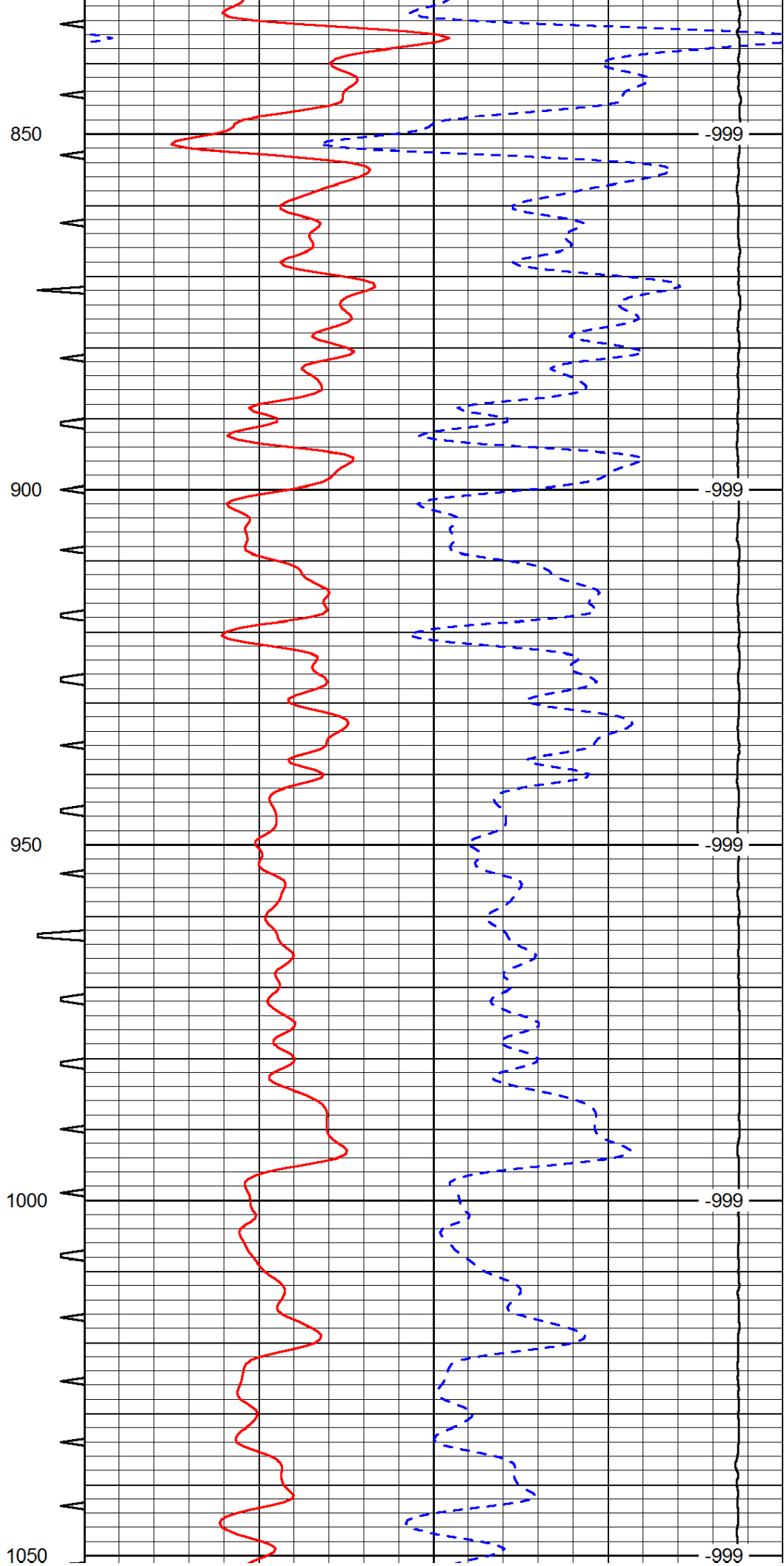
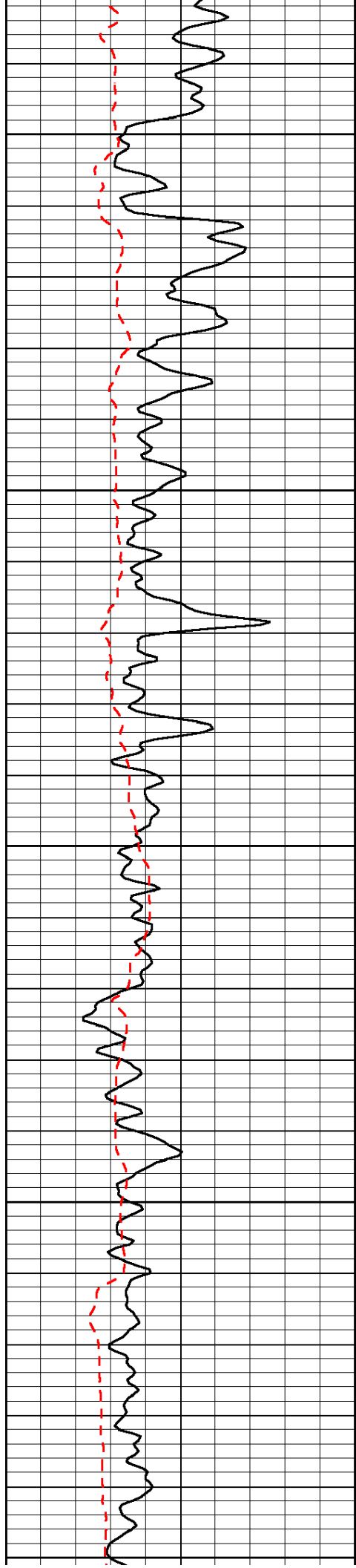
0	Gamma Ray	150	Sonic Int	140	Delta Time (usec/ft)	40
150	Gamma Ray	300	5	0	SPOR	-10
6	Caliper (GAPI)	16		15000	LTEN (lb)	0

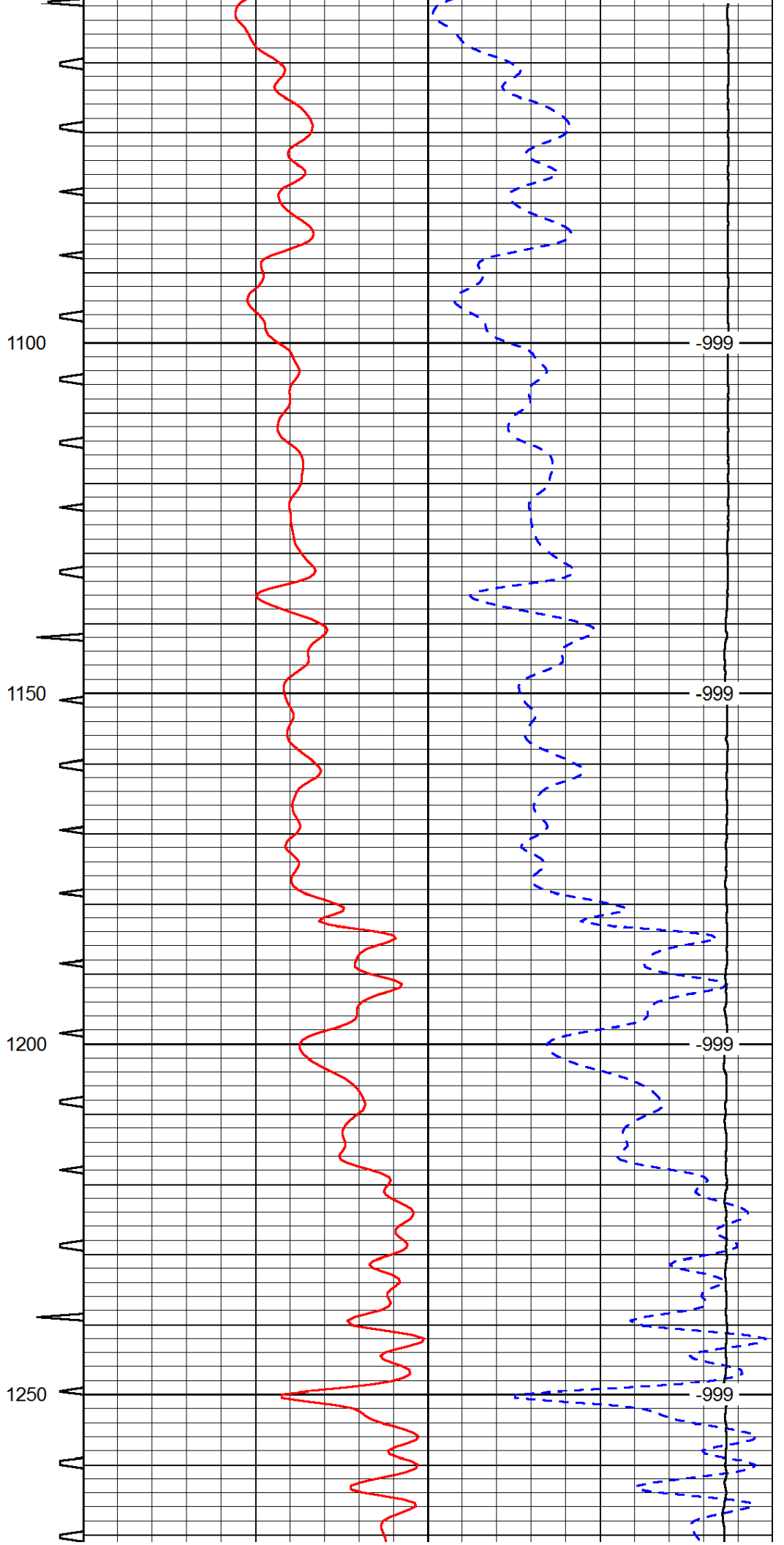
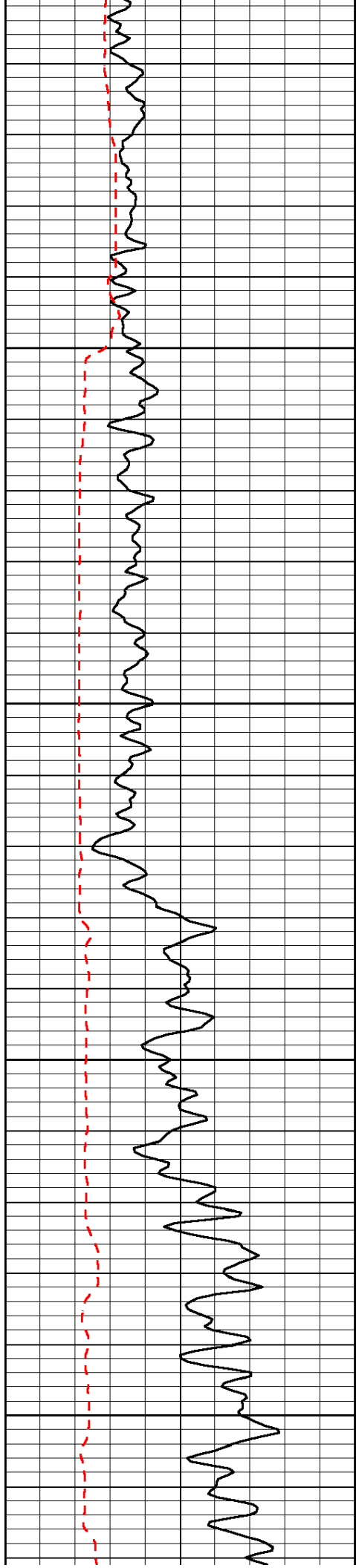
LSPD

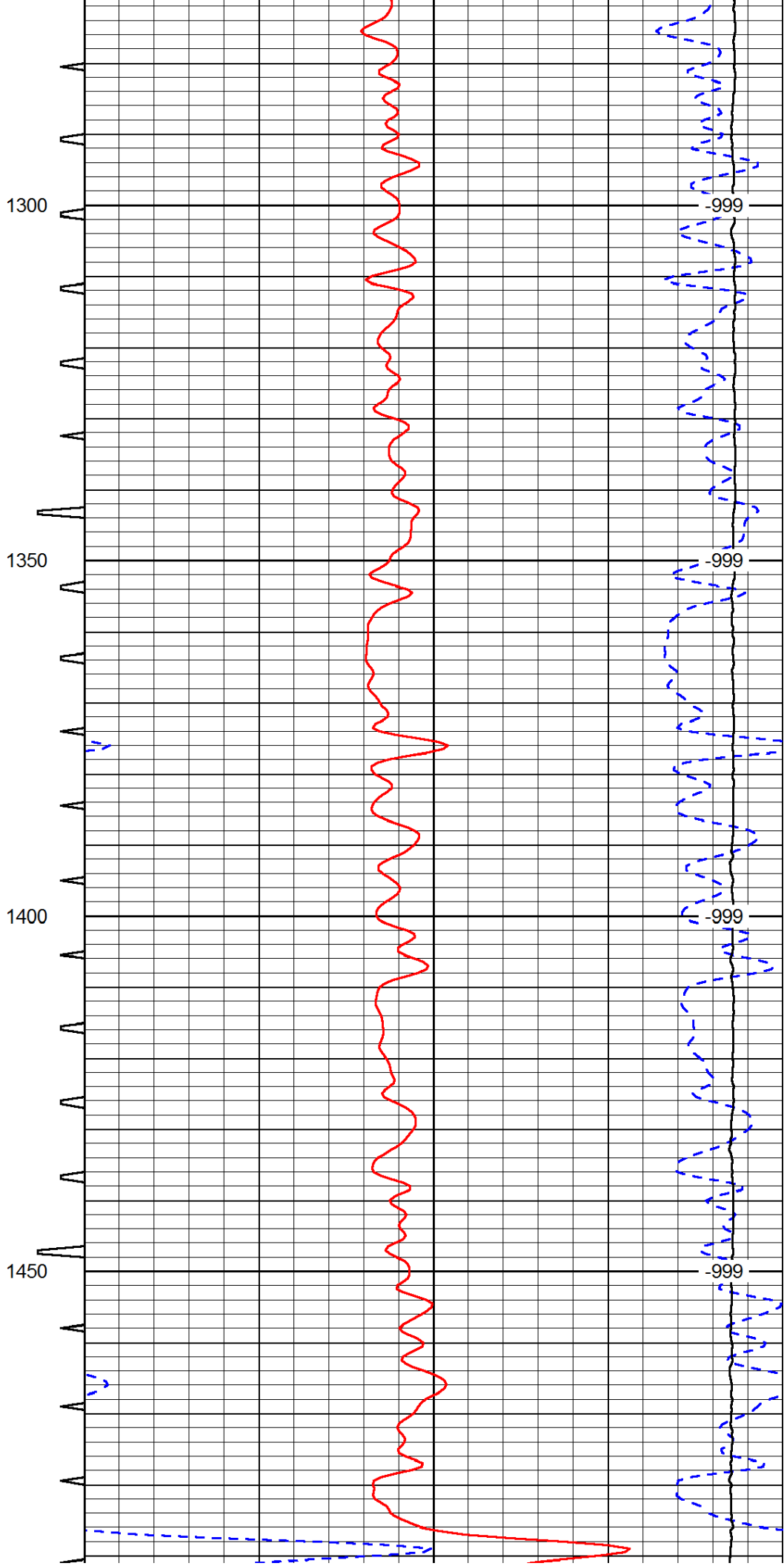
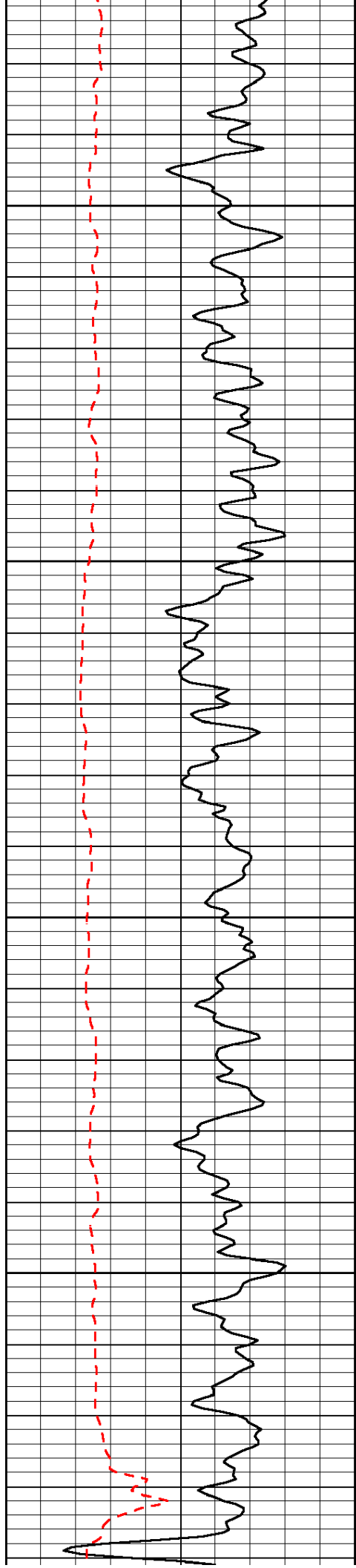


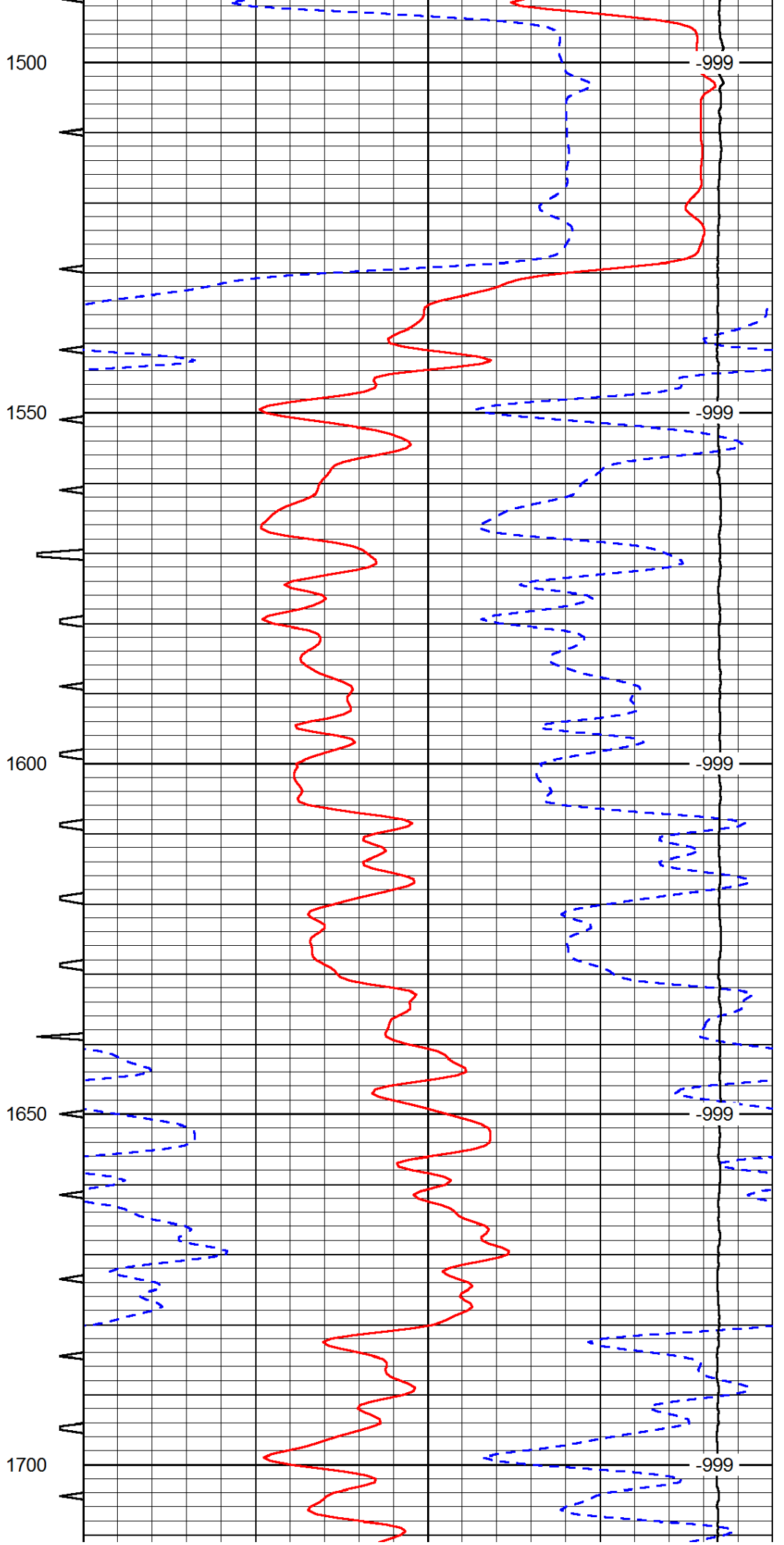
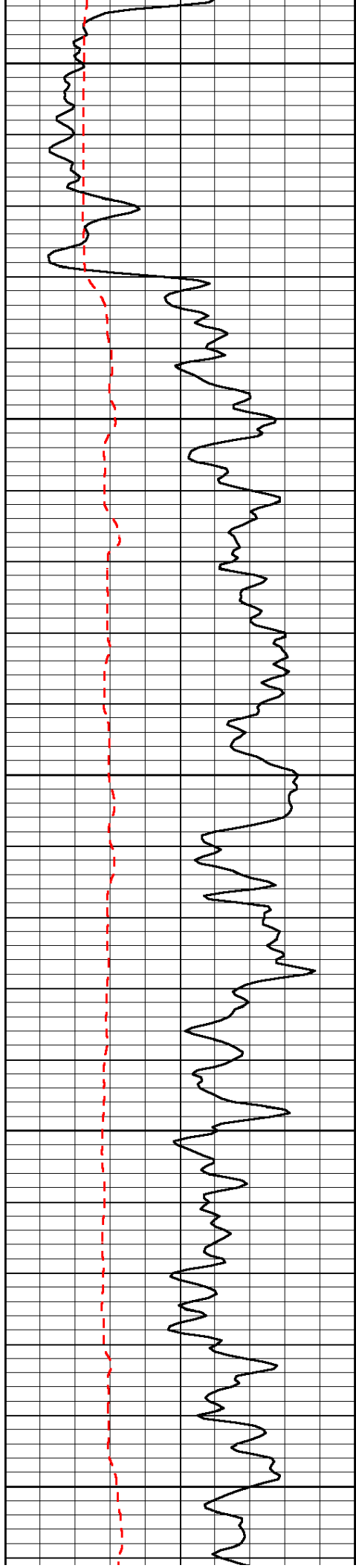


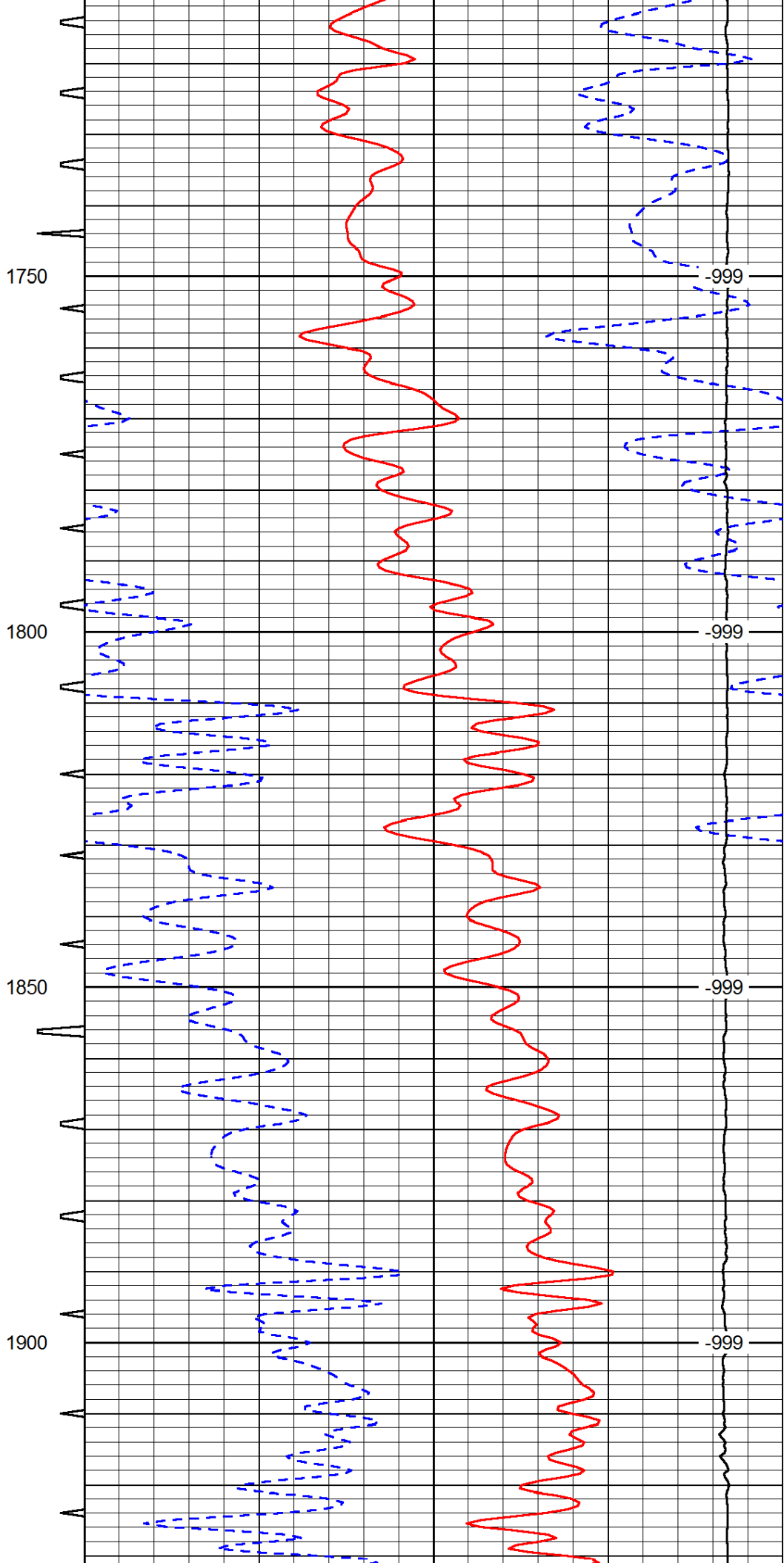
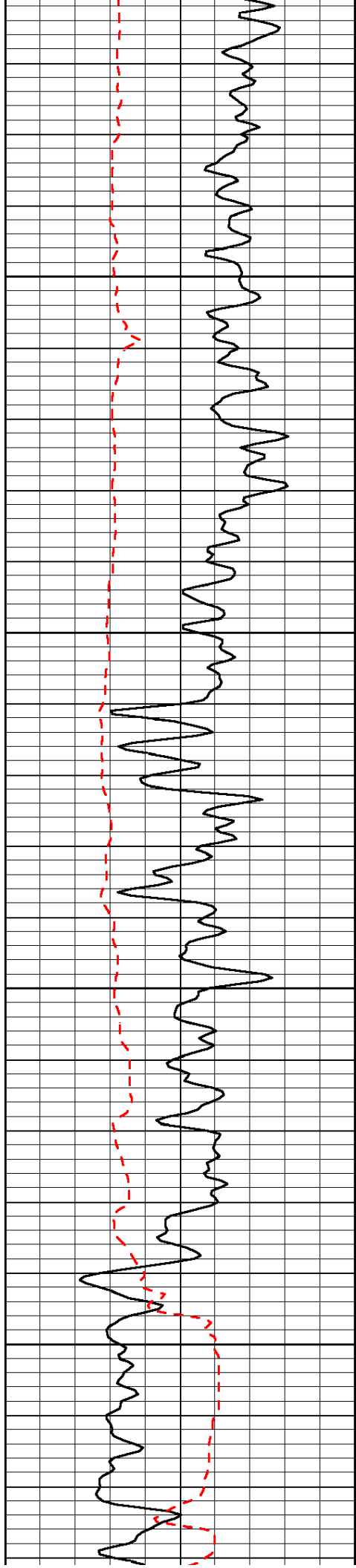


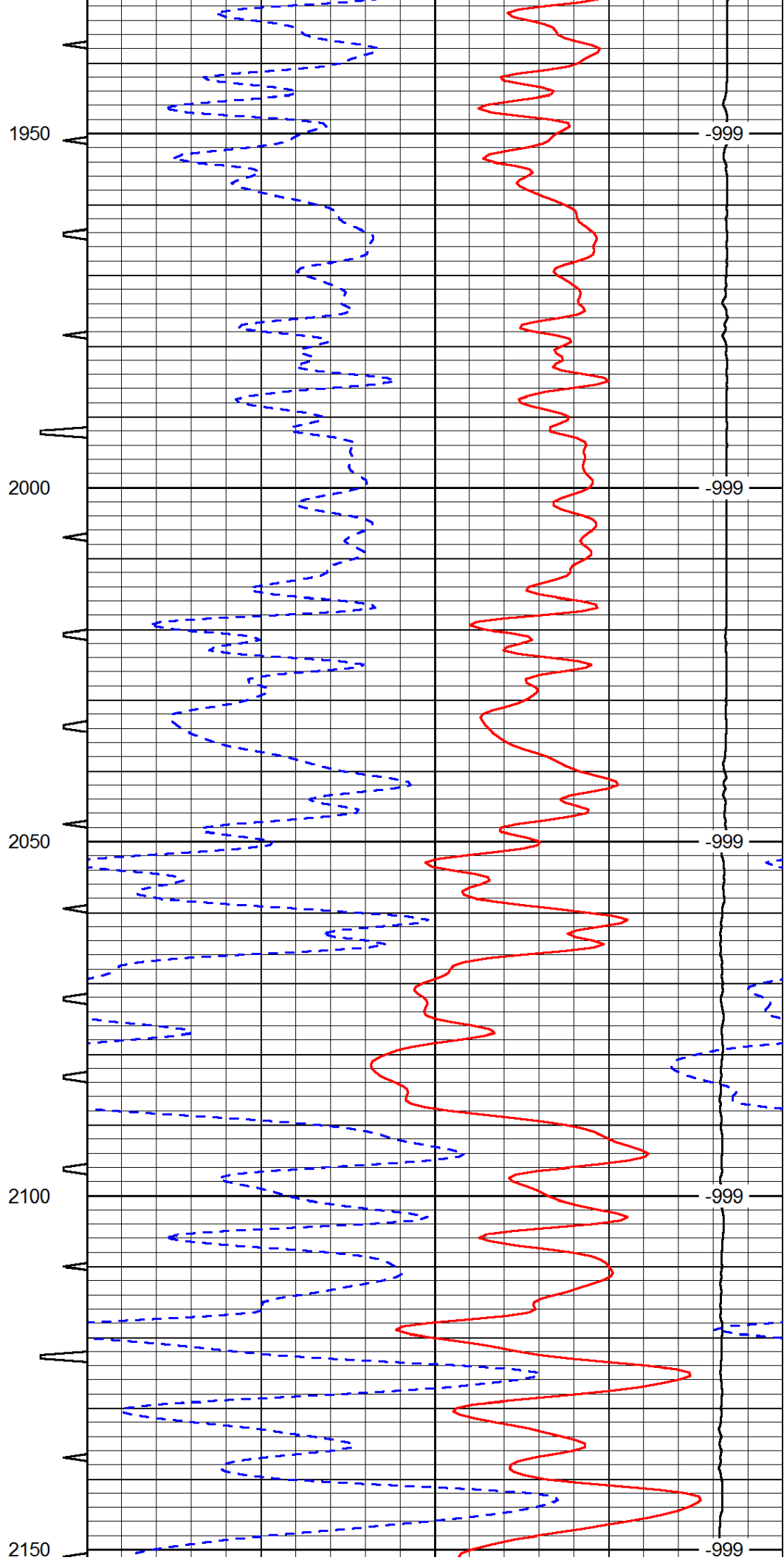
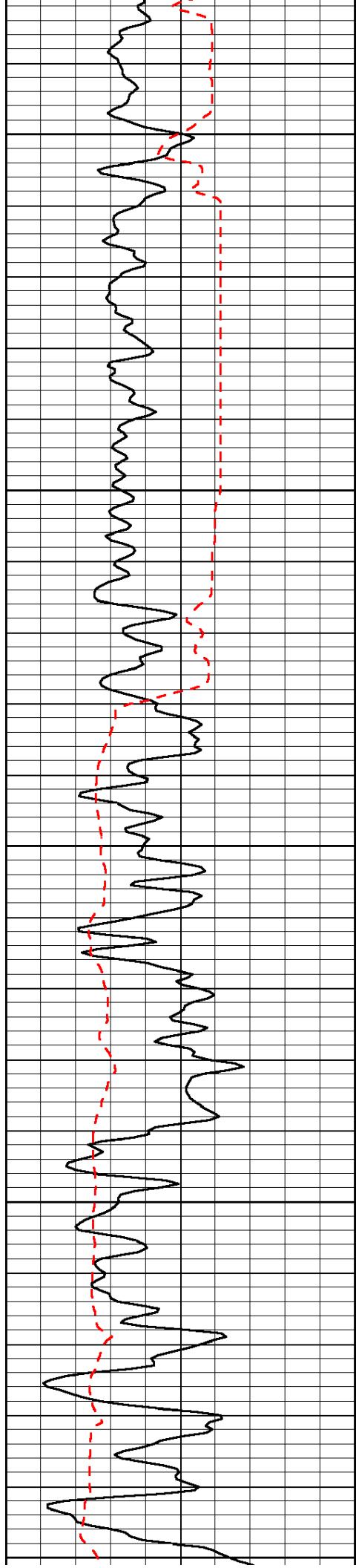


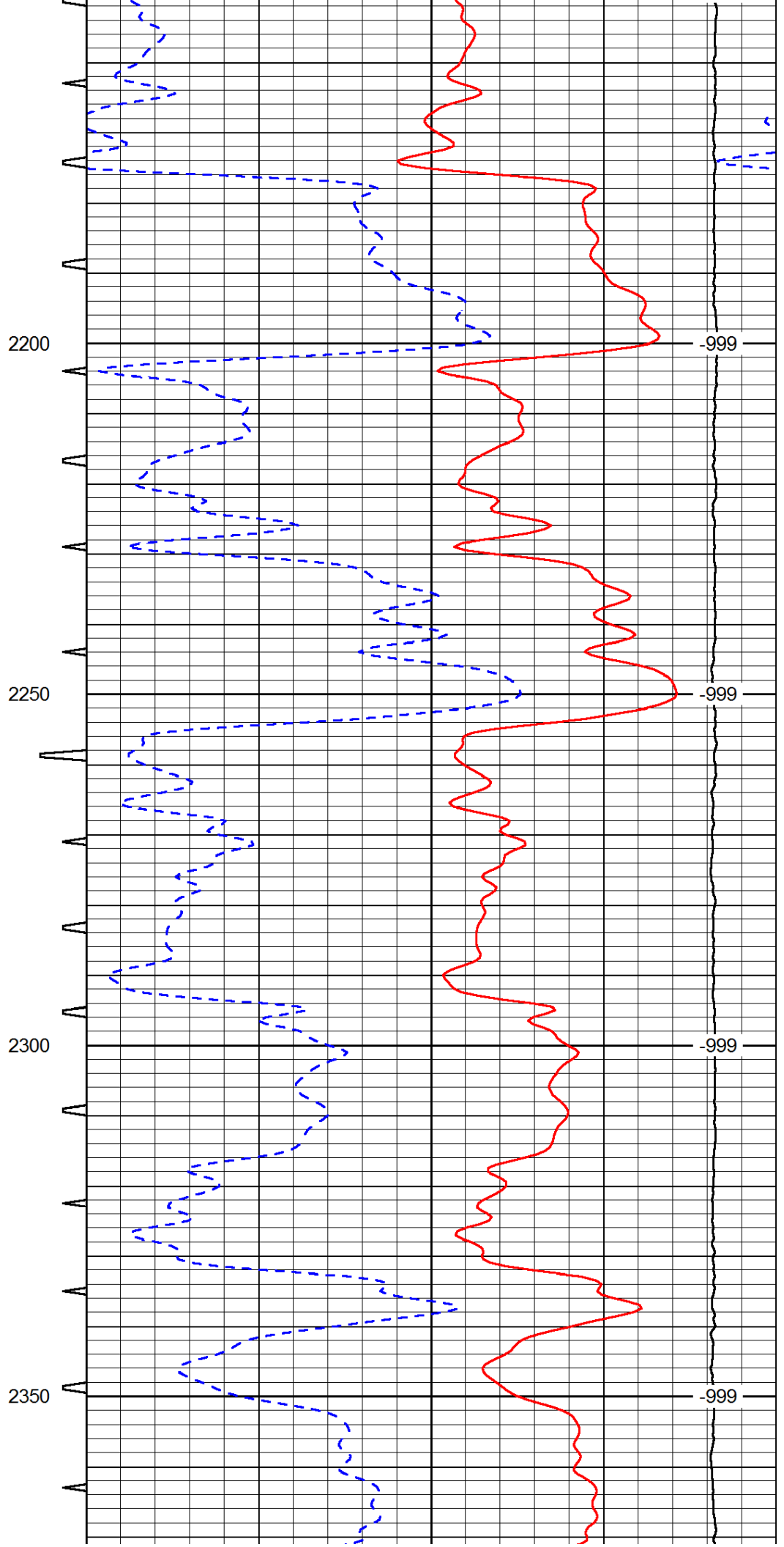
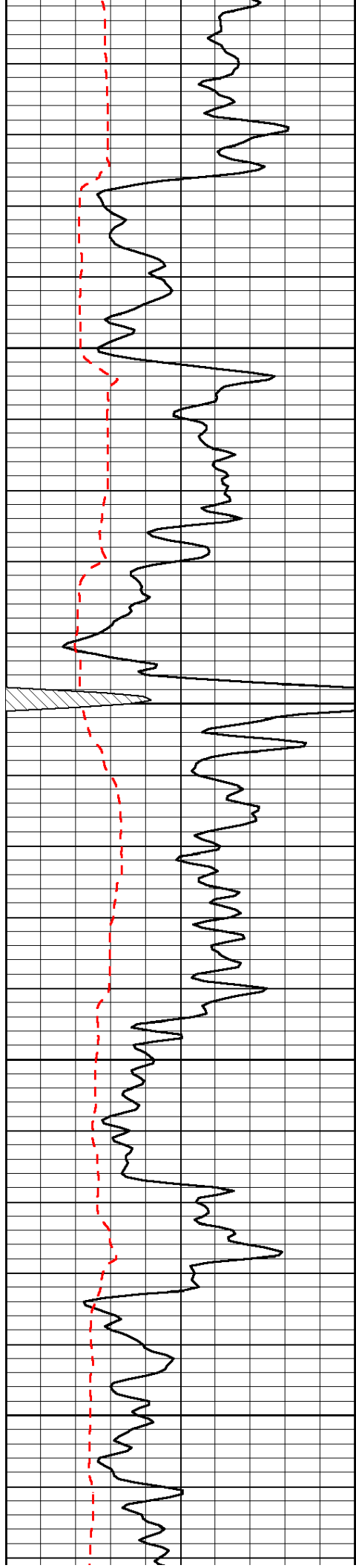


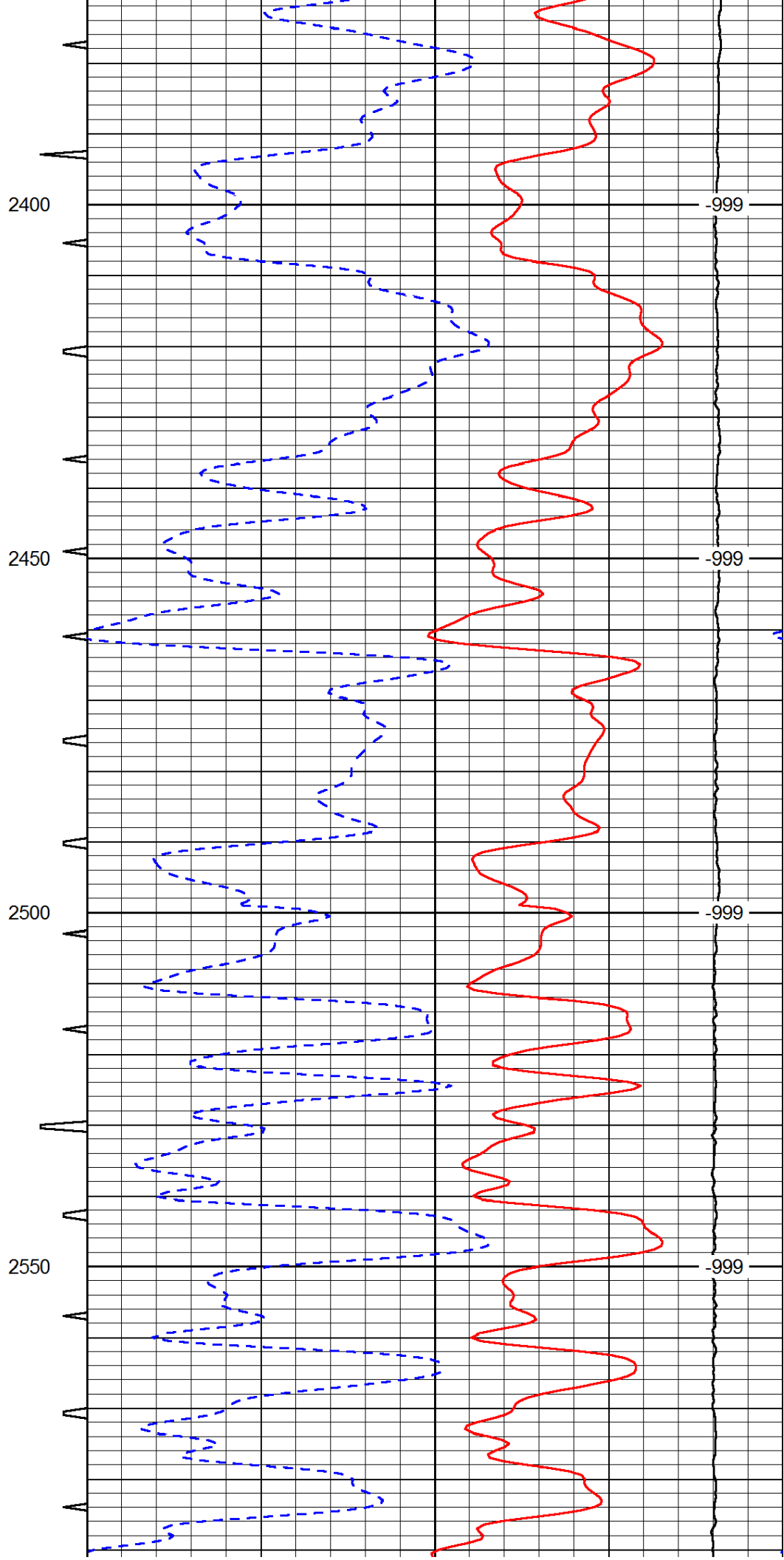
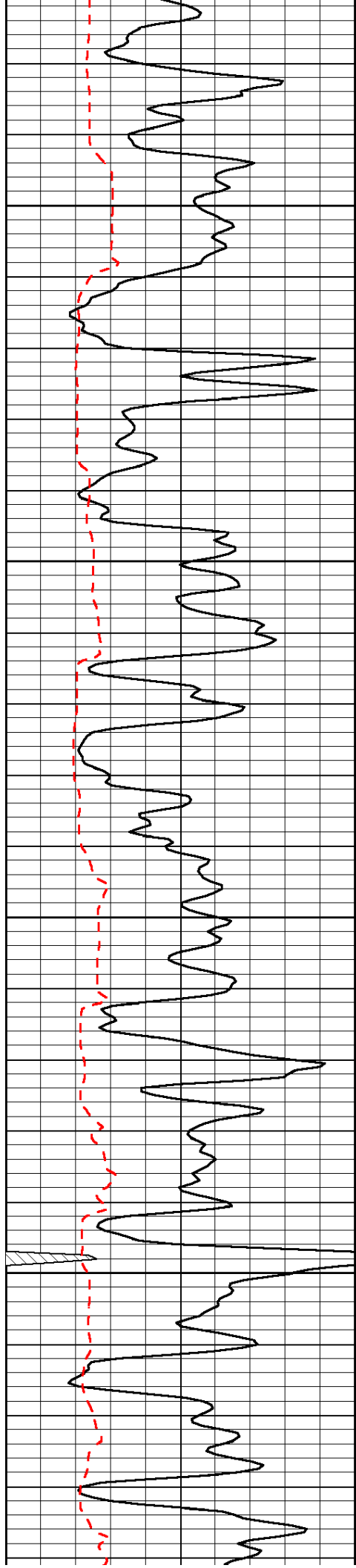


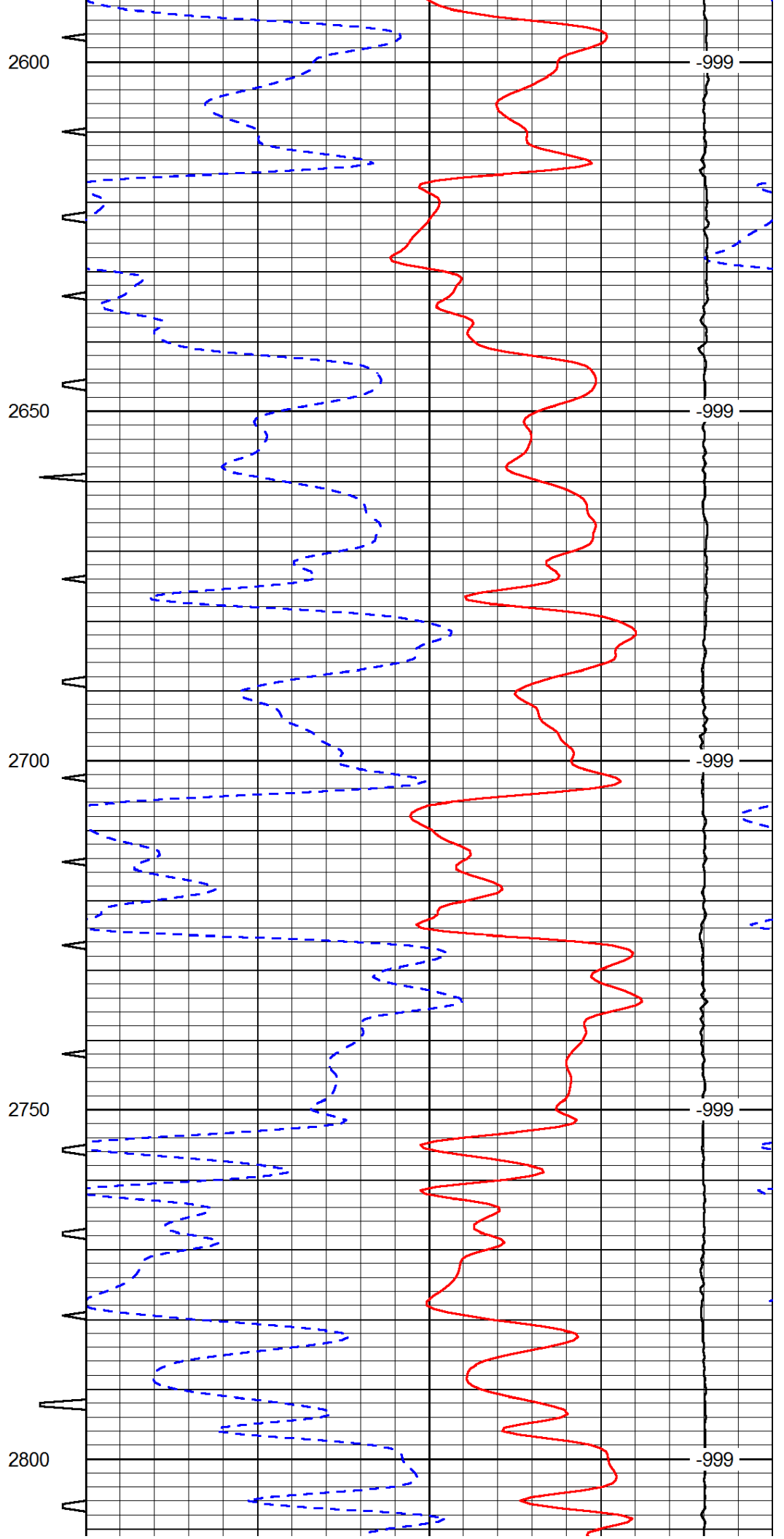
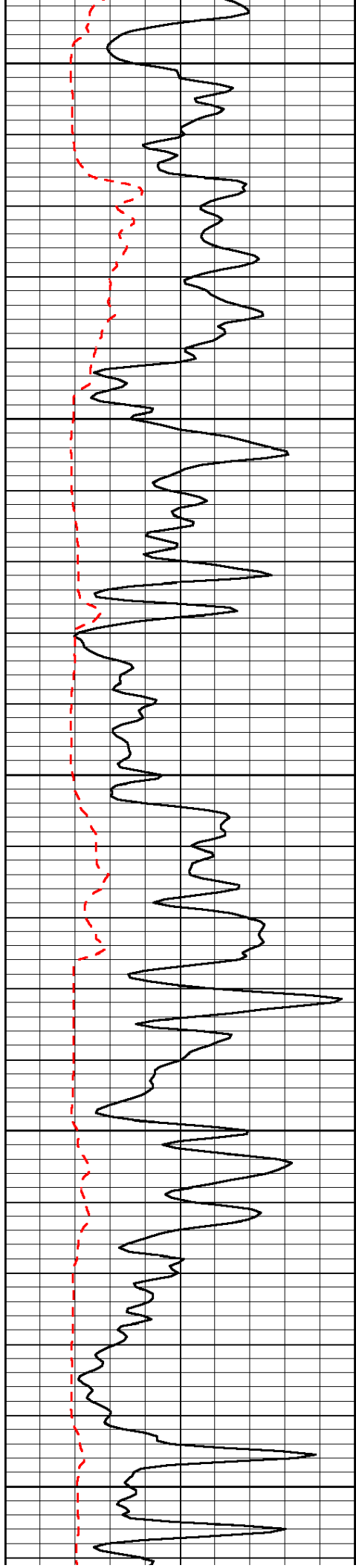


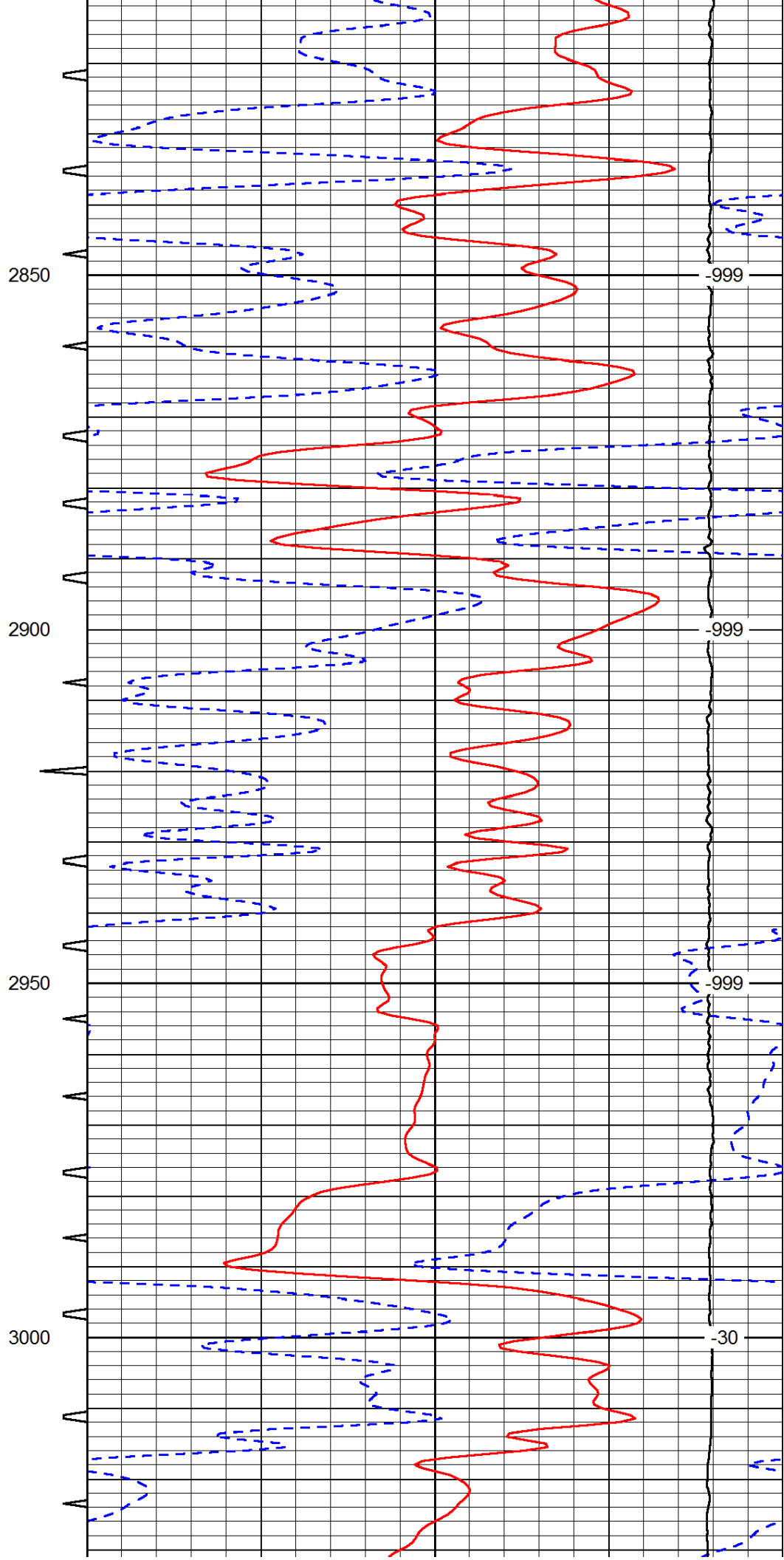
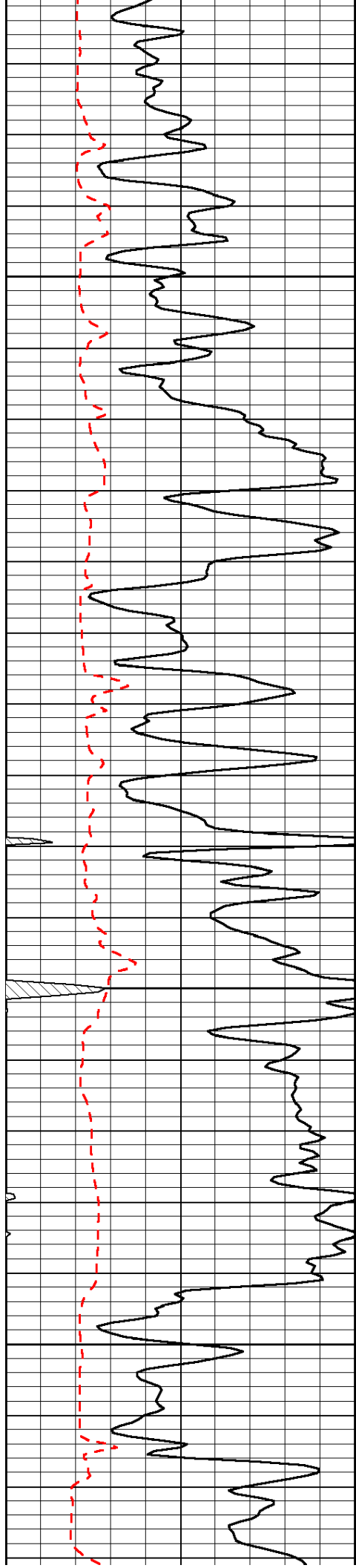


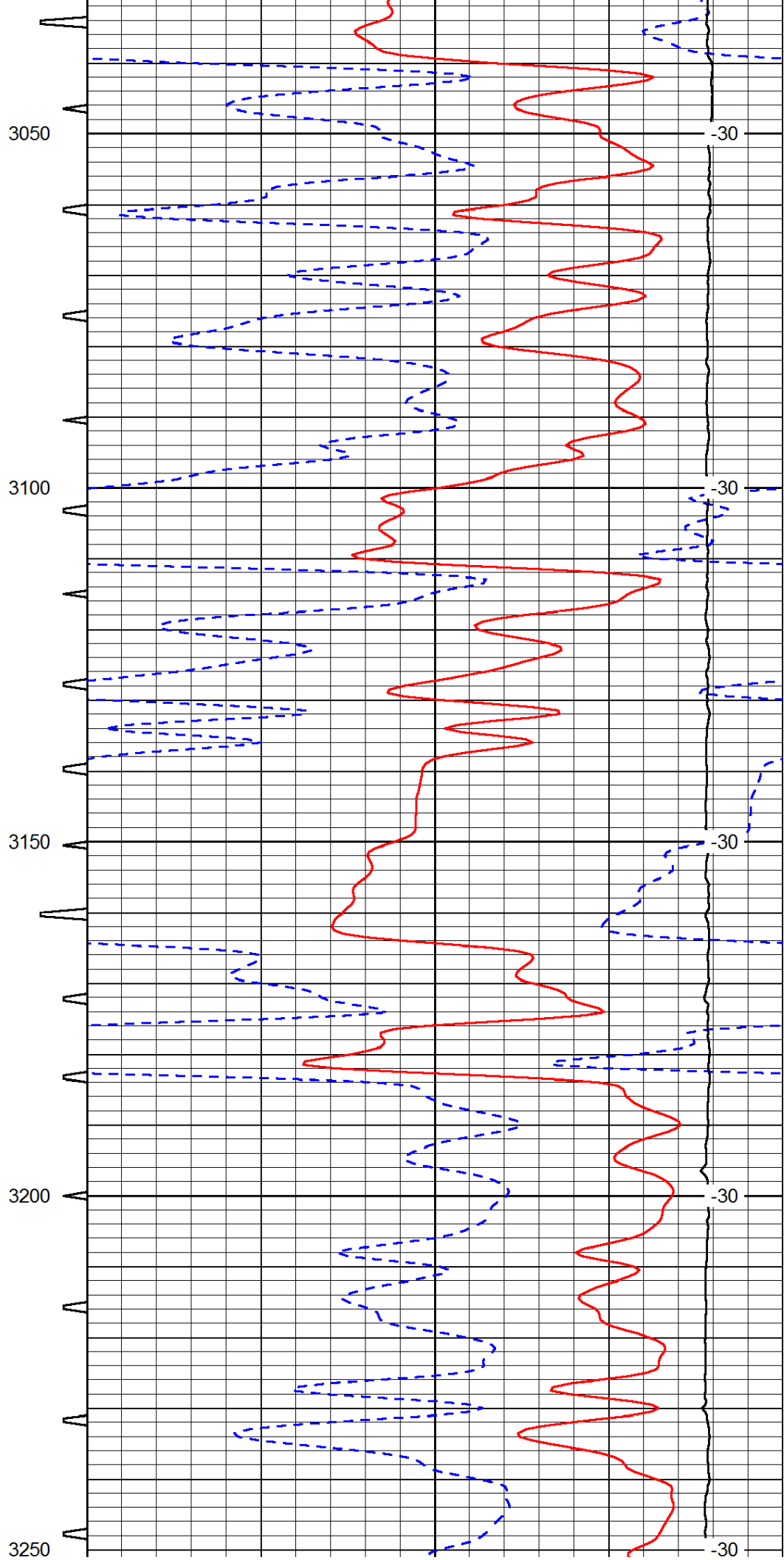
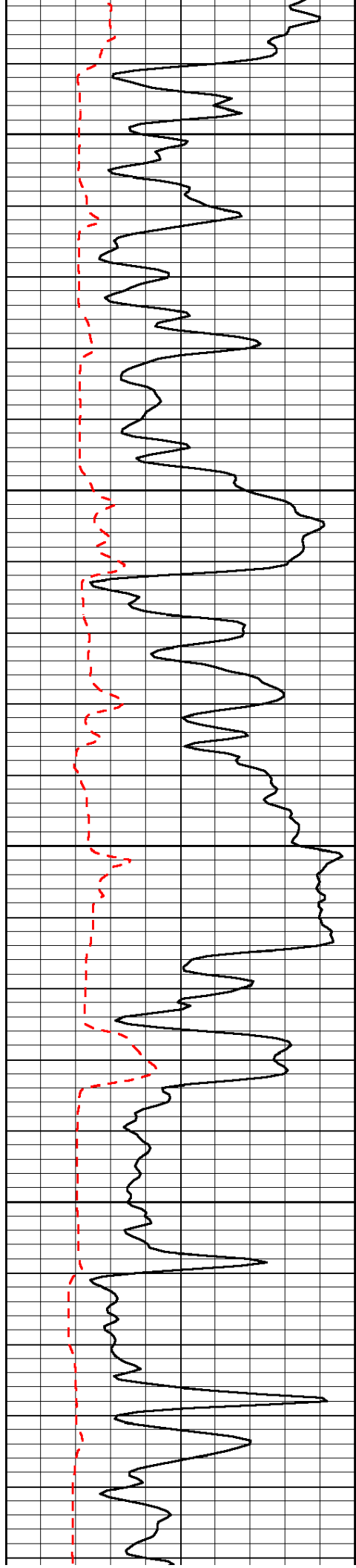


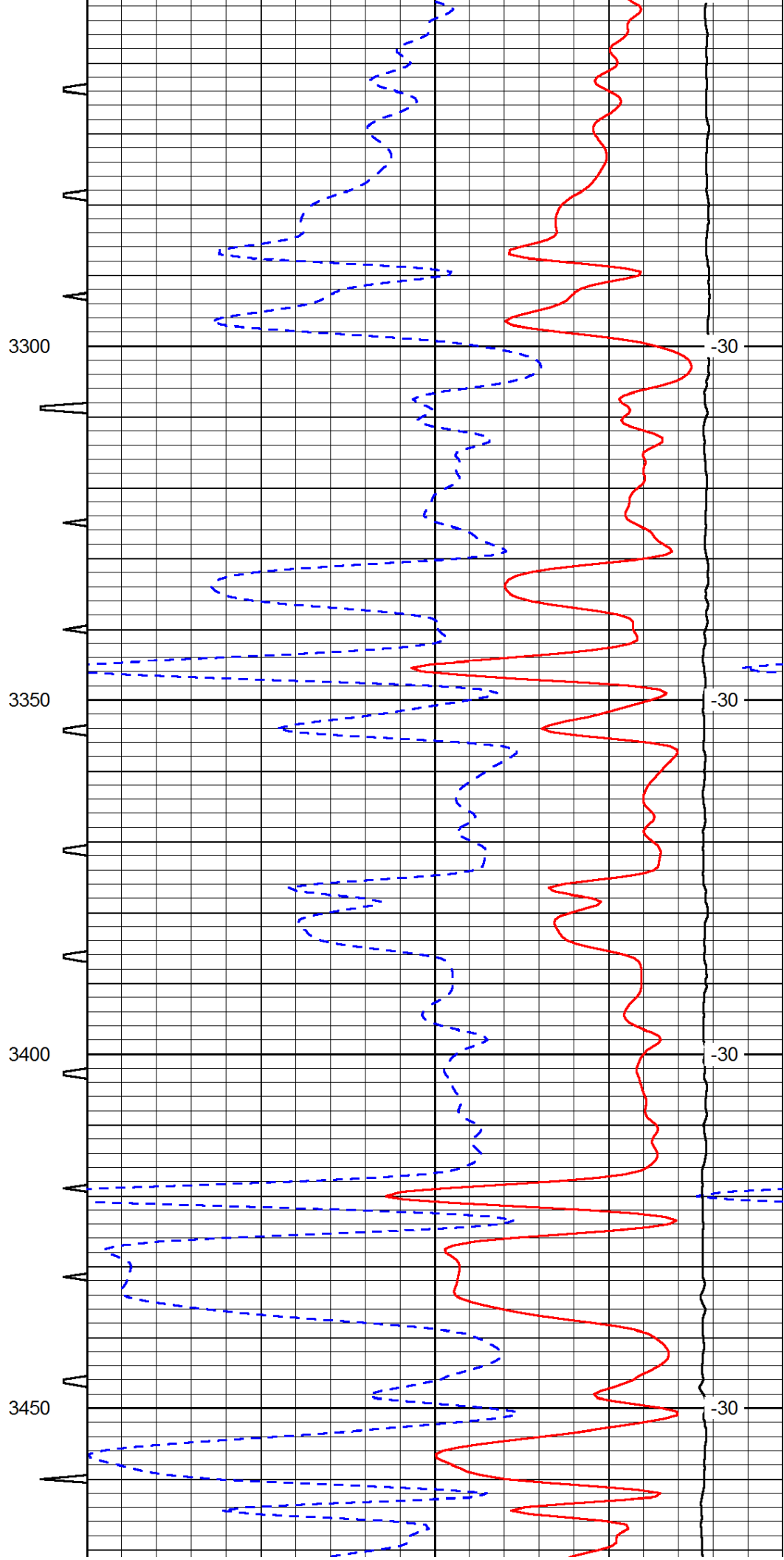
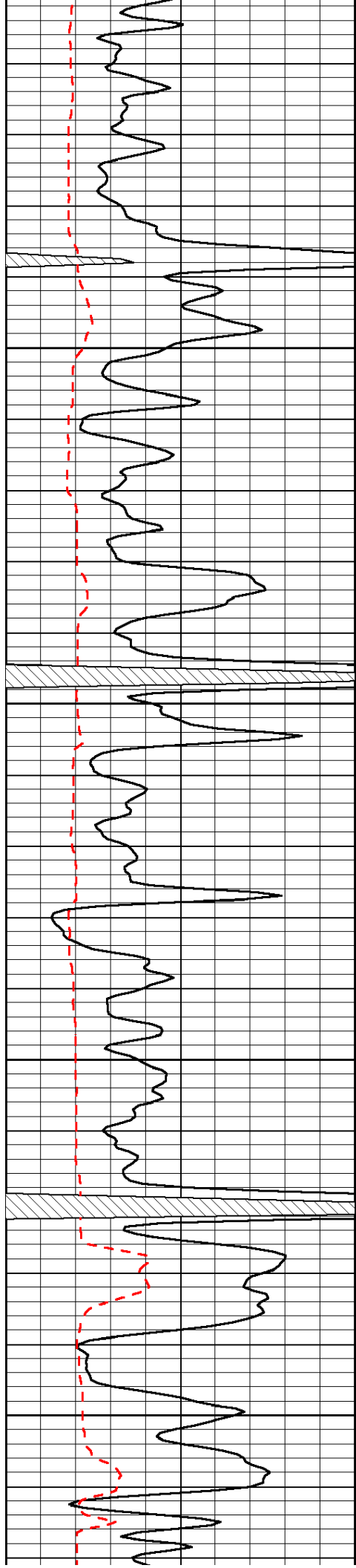


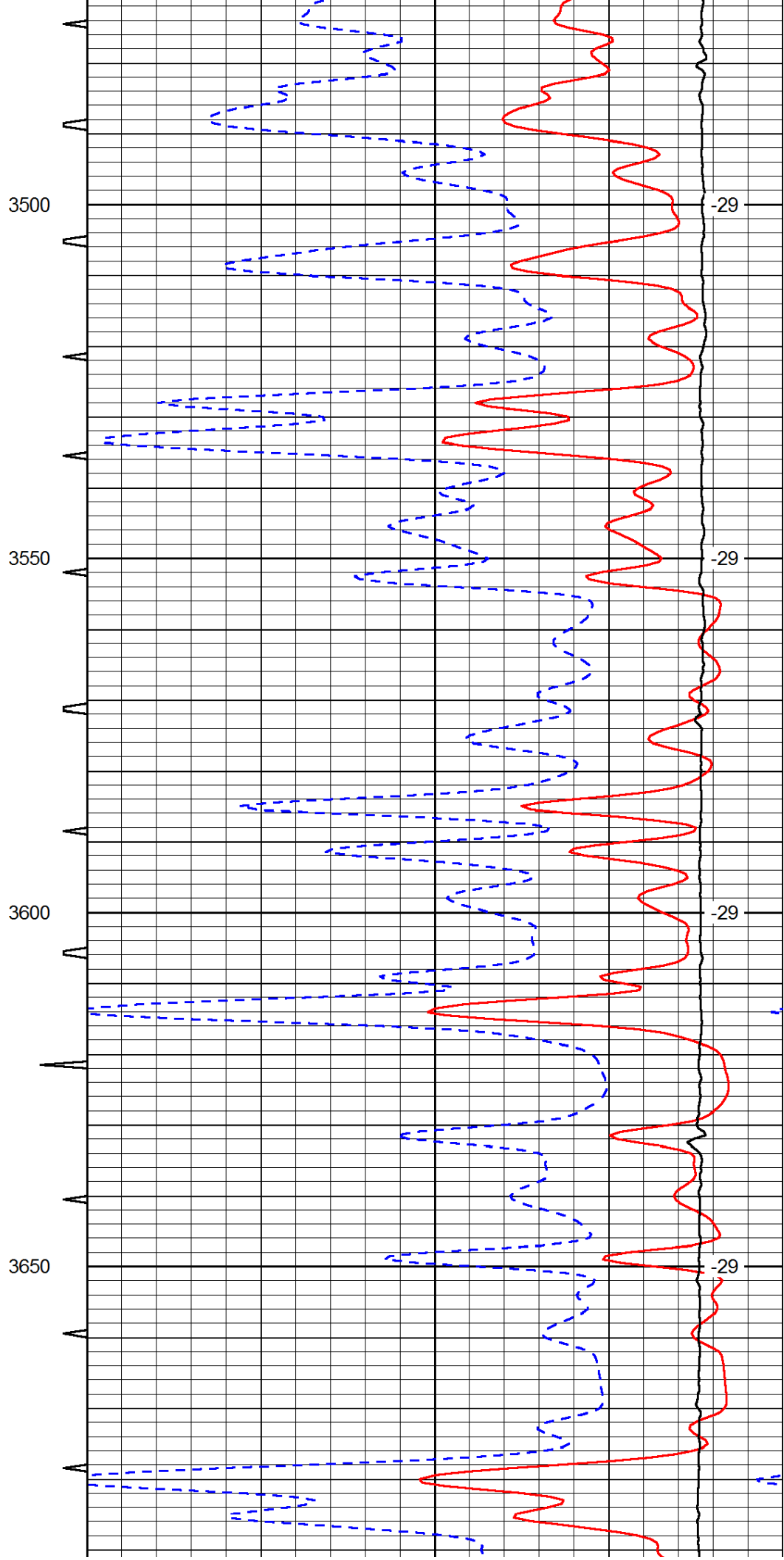
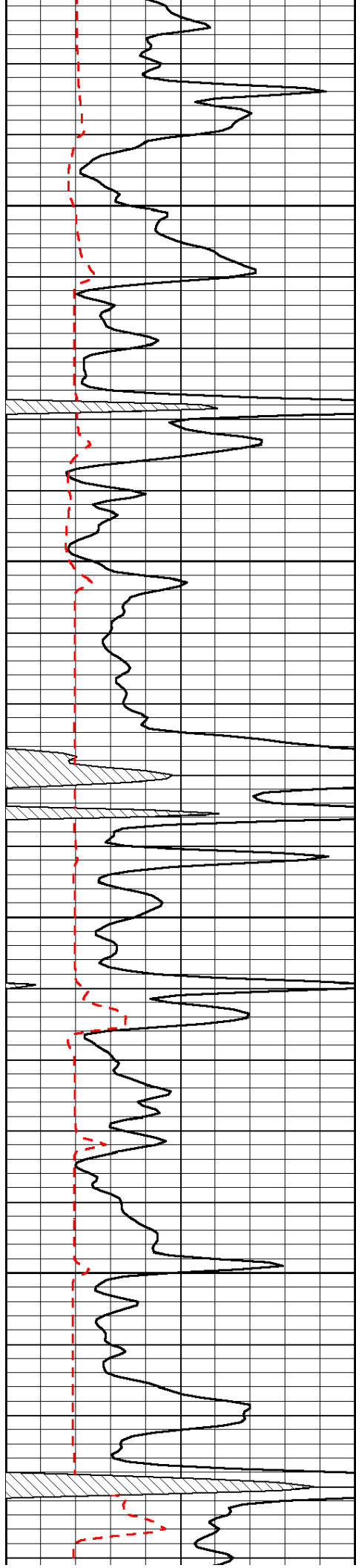


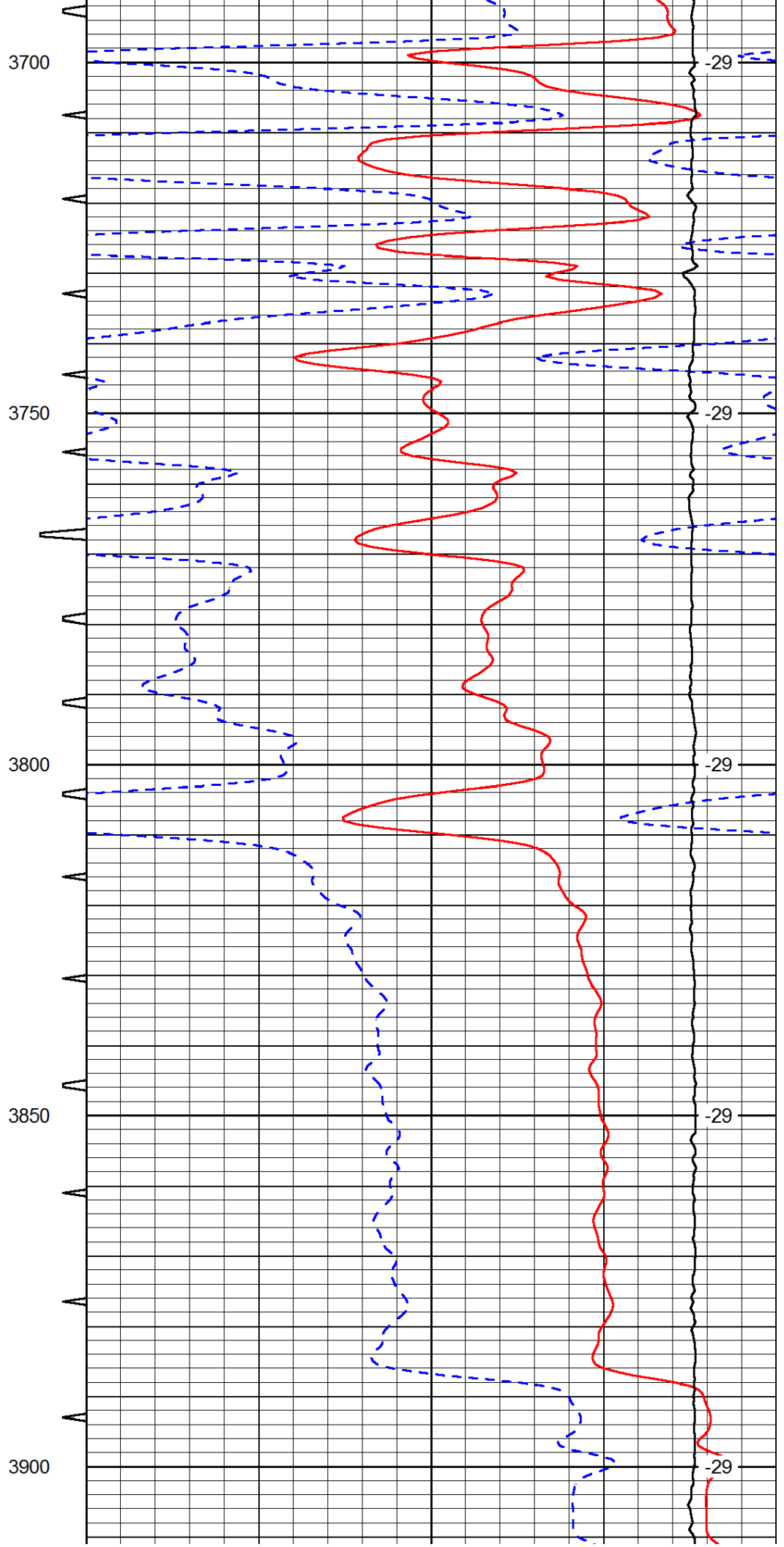
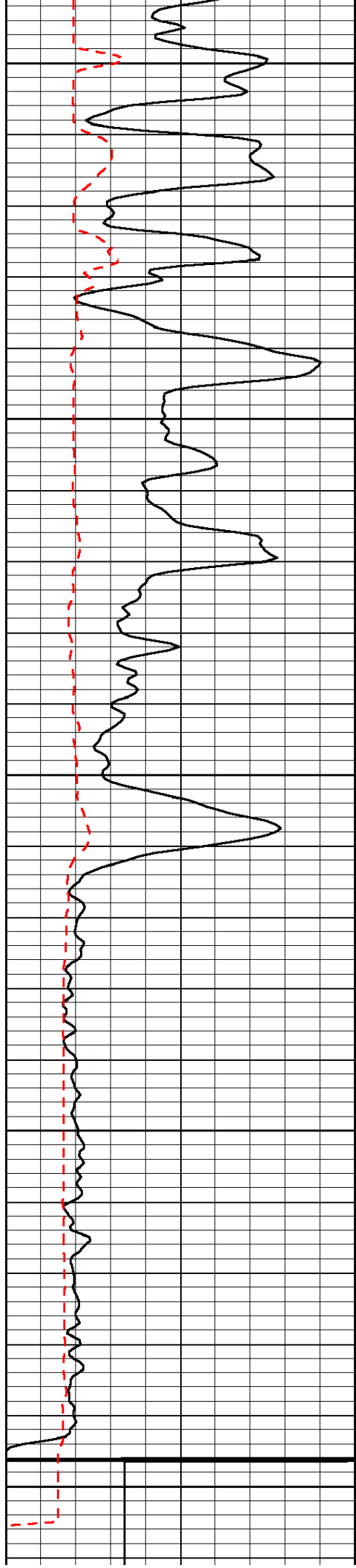


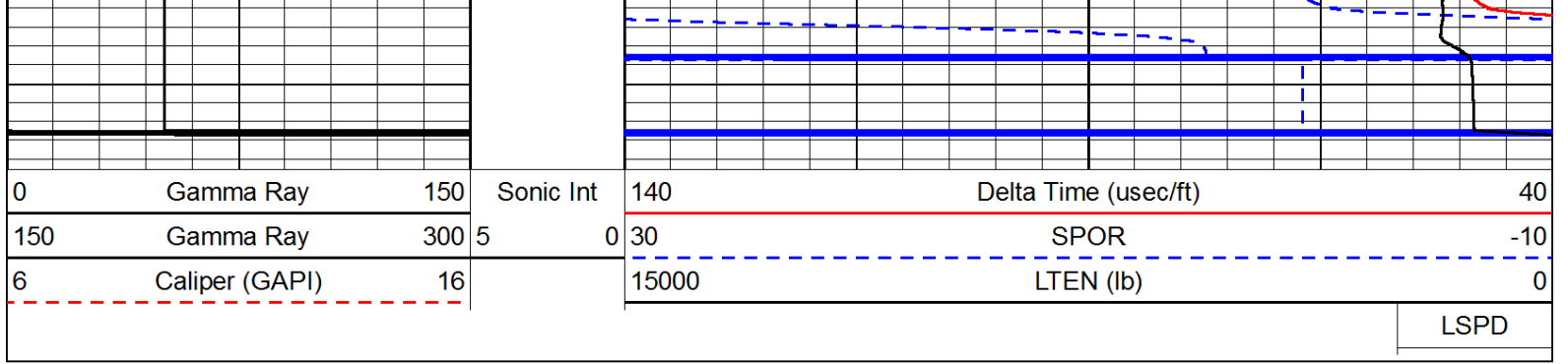












0	Gamma Ray	150	Sonic Int	140	Delta Time (usec/ft)	40
150	Gamma Ray	300	5	0	SPOR	-10
6	Caliper (GAPI)	16		15000	LTEN (lb)	0

LSPD