



Pioneer Energy Services

# Dual Induction Log

15-051-26,469-00-00

API No.

Company **Staab Oil Company**

Well **Mary-Ann #1**

Field **Wildcat**

County **Eljis** State **Kansas**

Location

**SE-NE-SW-NE  
1960' FNL & 1585' FEL**

Other Services  
CNL/CDL  
MEL/BHCS

Sec: **33** Twp: **12S** Rge: **19W**

Permanent Datum

Ground Level

Elevation

2124

Log Measured From

Kelly Bushing

5

Ft. Above Perm. Datum

Drilling Measured From

Kelly Bushing

K.B. 2129  
D.F.  
G.L. 2124

Date

2/9/2013

Run Number

One

Depth Driller

3912

Depth Logger

3916

Bottom Logged Interval

3915

Top Log Interval

200

Casing Driller

8.625 @ 229

Casing Logger

228

Bit Size

7.875

Type Fluid in Hole

Chemical

Salinity,ppm CL

10,000

Density / Viscosity

9.0 46

pH / Fluid Loss

8.5 12.0

Source of Sample

Flowline

Rm @ Meas. Temp

.30 @ 70

Rmf @ Meas. Temp

.23 @ 70

Rmc @ Meas. Temp

.41 @ 70

Source of Rmf / Rmc

Charts

Rm @ BHT

.18 @ 115

Operating Rig Time

5 Hours

Max Rec. Temp. F

115

Equipment Number

15

Location

Hays

Recorded By

J. Hennickson

D. Kerr

Witnessed By

Randy Kilian

Frank Staab

<<< Fold Here >>>

All interpretations are opinions based on inferences from electrical or other measurements and we cannot and do not guarantee the accuracy or correctness of any interpretation, and we shall not, except in the case of gross or willful negligence on our part, be liable or responsible for any loss, costs, damages, or expenses incurred or sustained by anyone resulting from any interpretation made by any of our officers, agents or employees. These interpretations are also subject to our general terms and conditions set out in our current Price Schedule.

## Comments

Thank you for using Pioneer Energy Services  
[www.pioneerenergy.com](http://www.pioneerenergy.com)  
 785 625 3858  
 Yocemento KS  
 3 North, West Into

Database File: c:\warrior\data\staab\_mary-ann #1\staab\_oil\_mary\_ann\_1hd.db  
 Dataset Pathname: DIL\stabstk  
 Presentation Format: dil2in  
 Dataset Creation: Sat Feb 09 13:50:36 2013  
 Charted by: Depth in Feet scaled 1:600

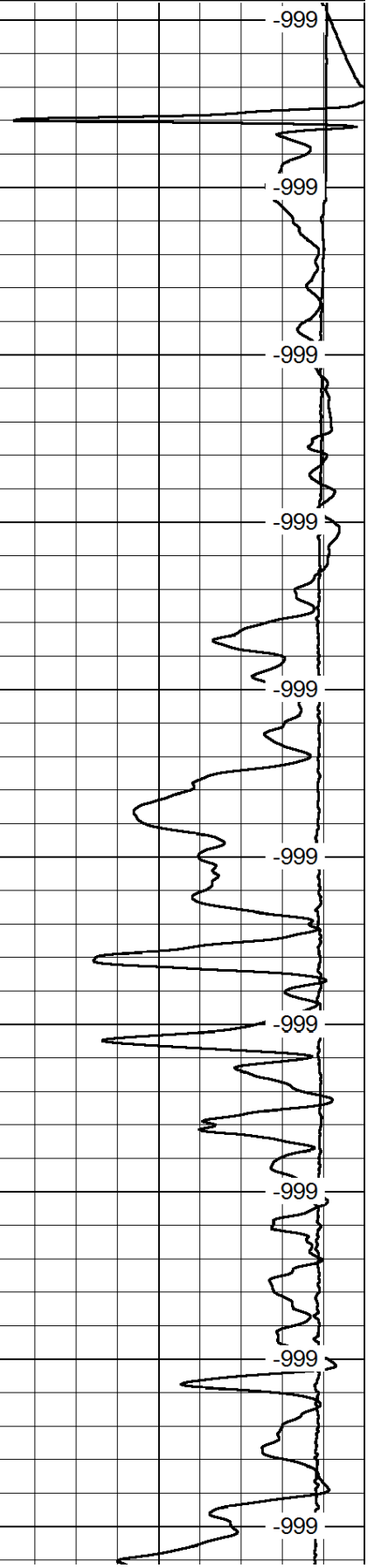
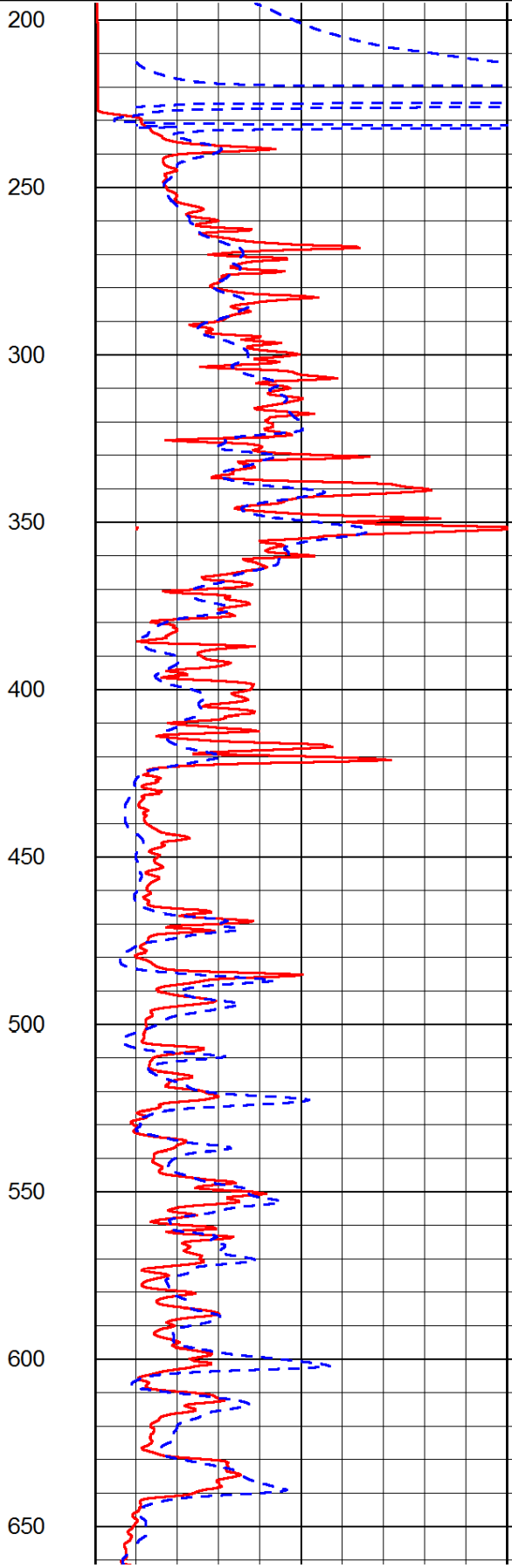
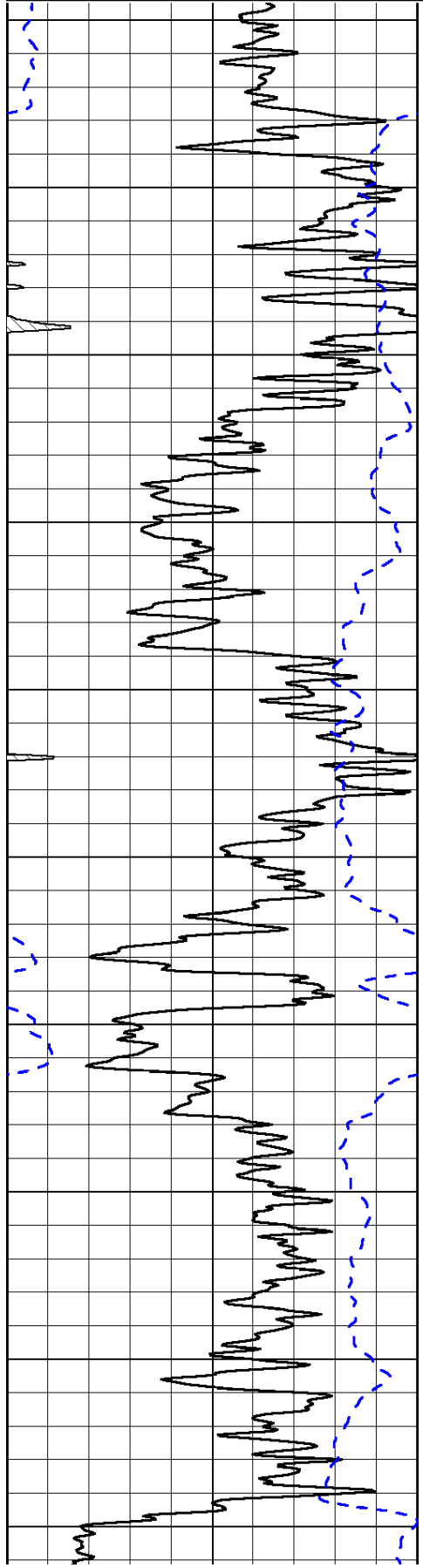
0	Gamma Ray	150
-200	SP (mV)	0

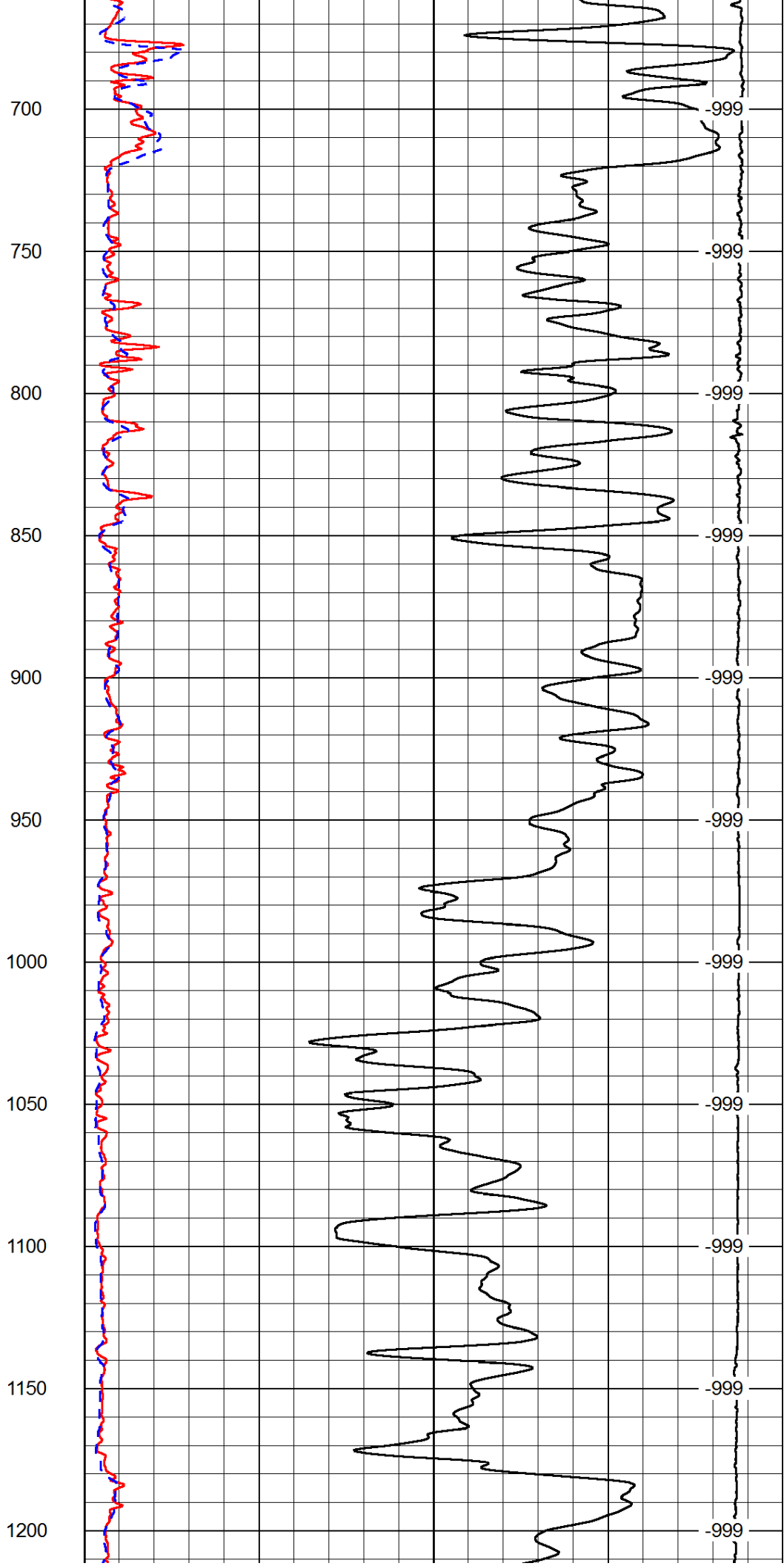
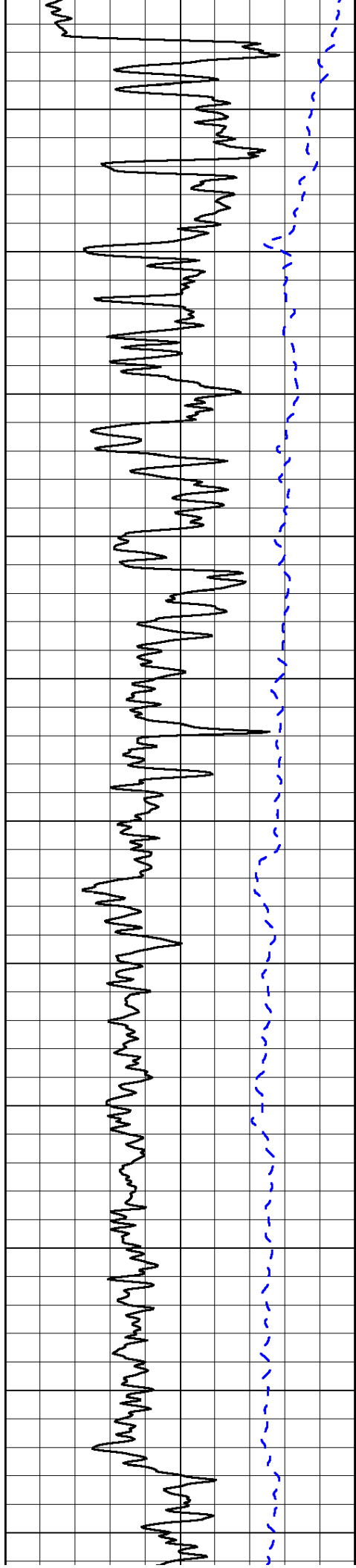
0	Shallow Resistivity	50
0	Deep Resistivity	50

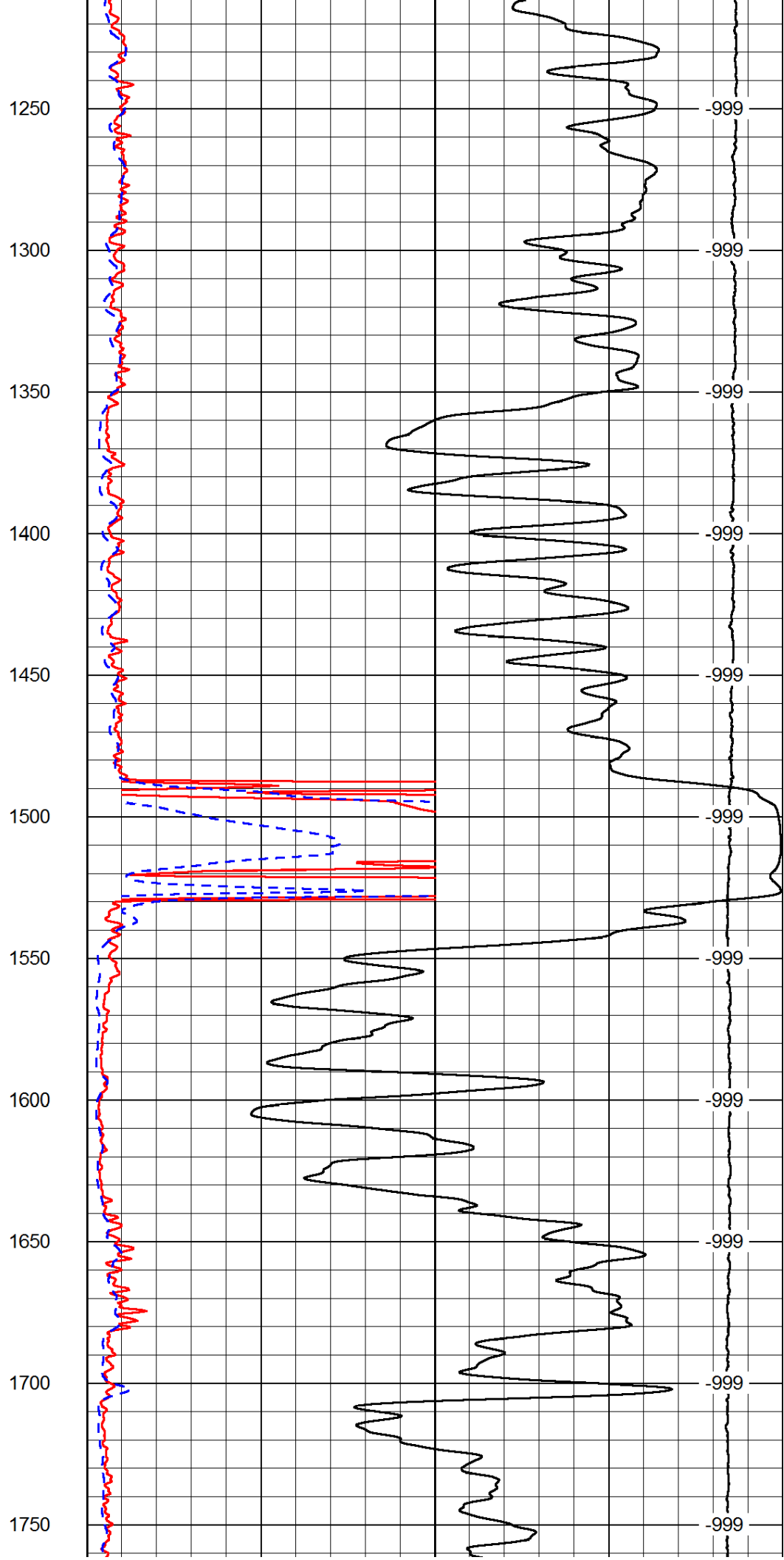
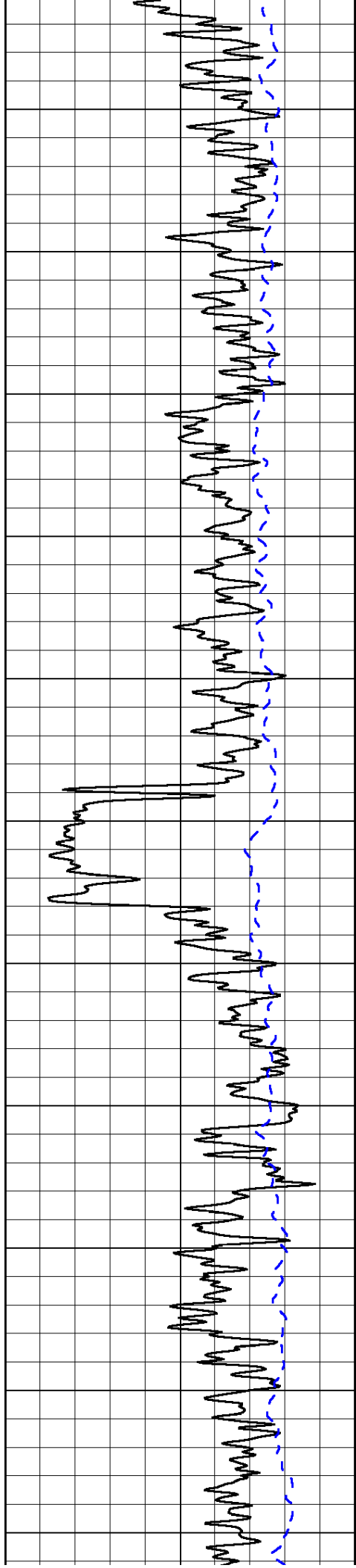
LSPD

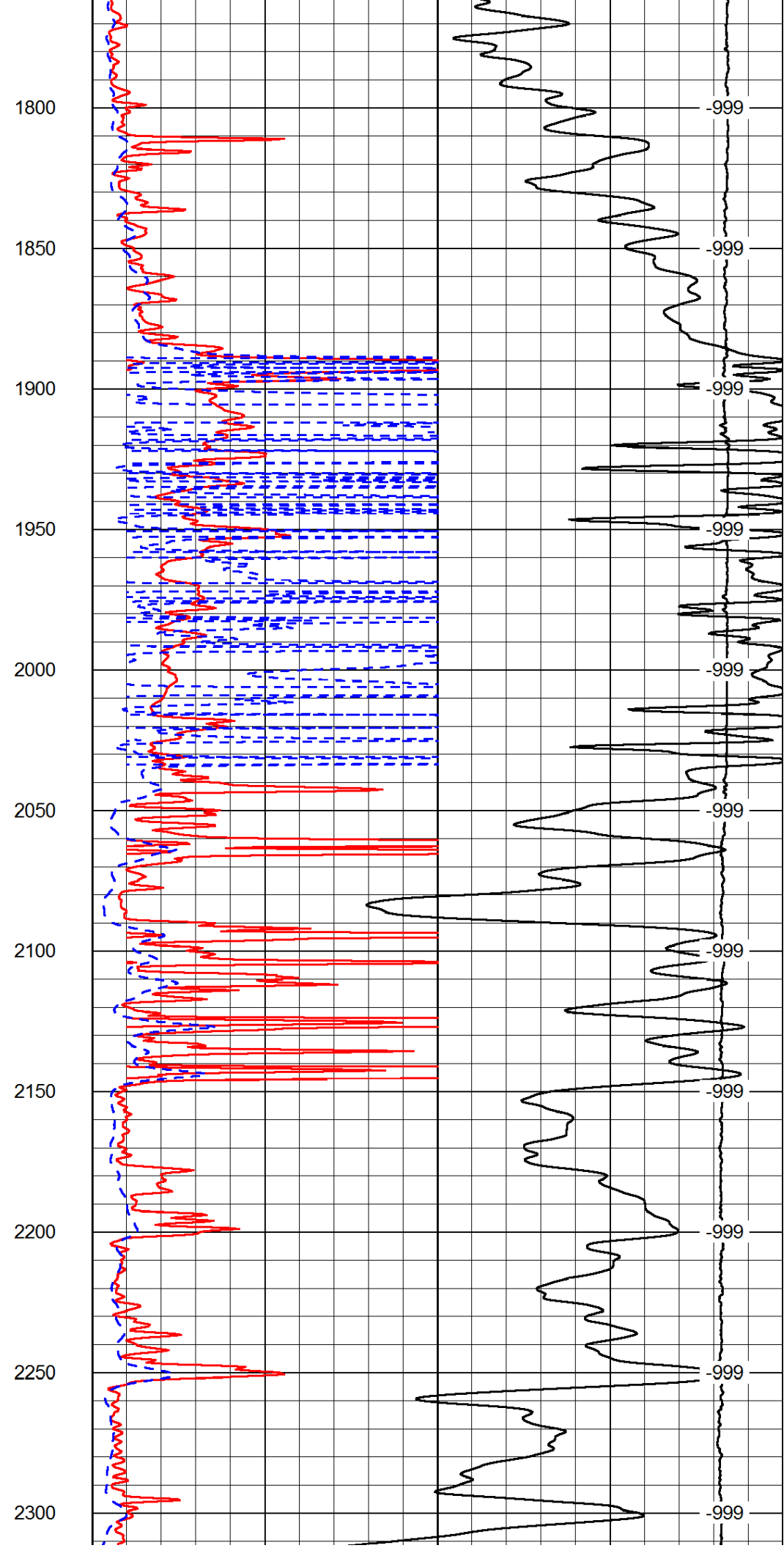
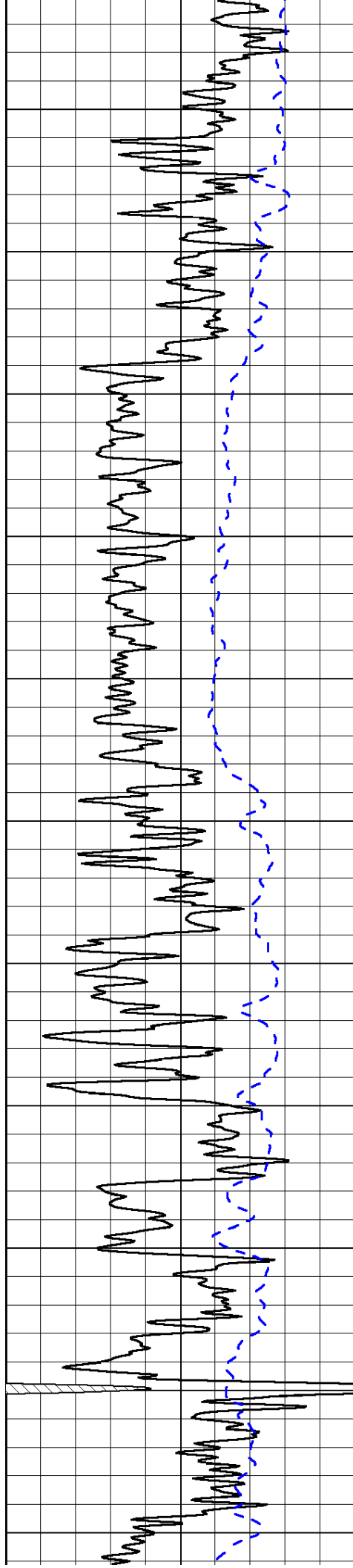
1000	Conductivity	0
15000	Line Tension	0

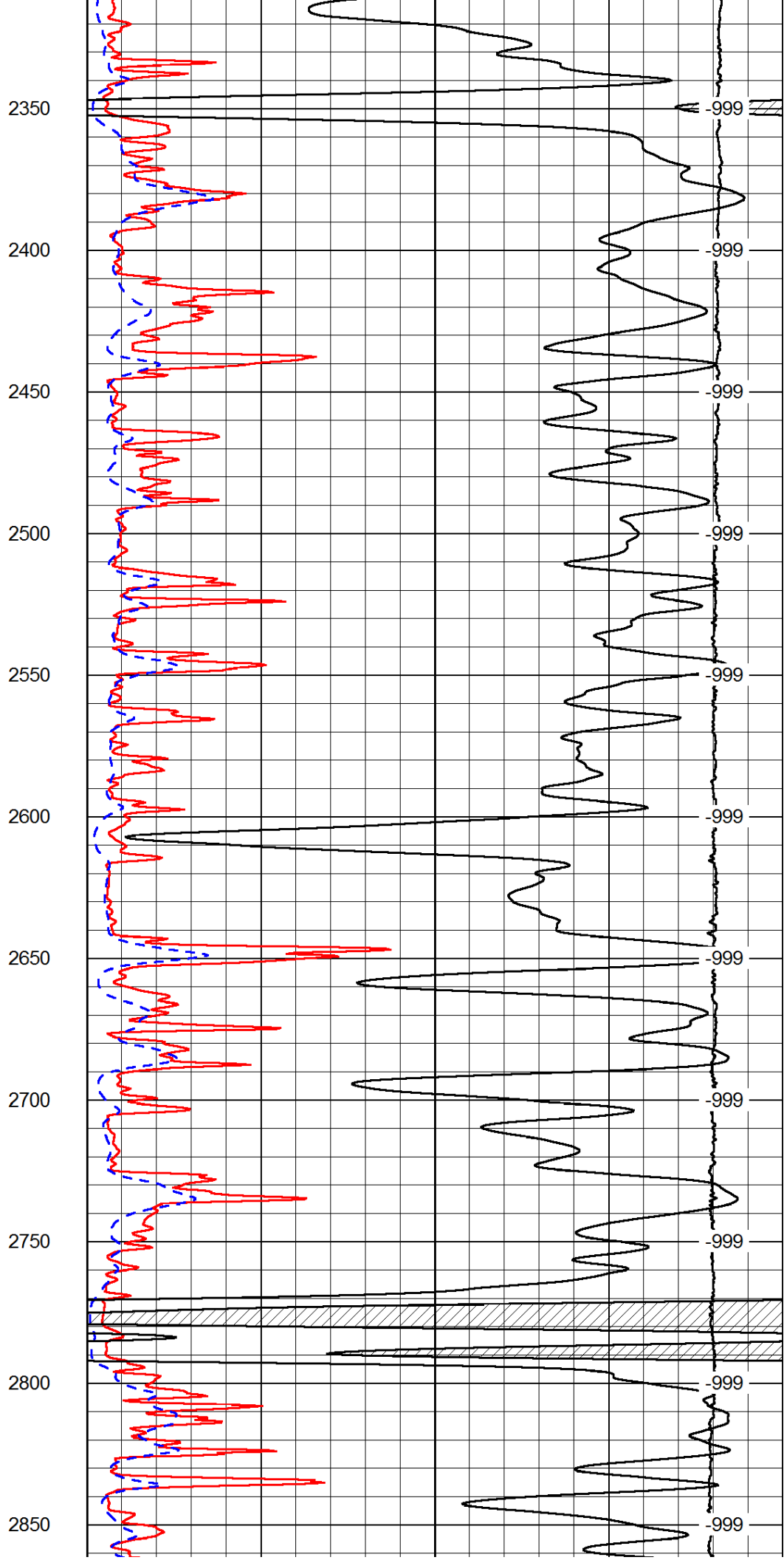
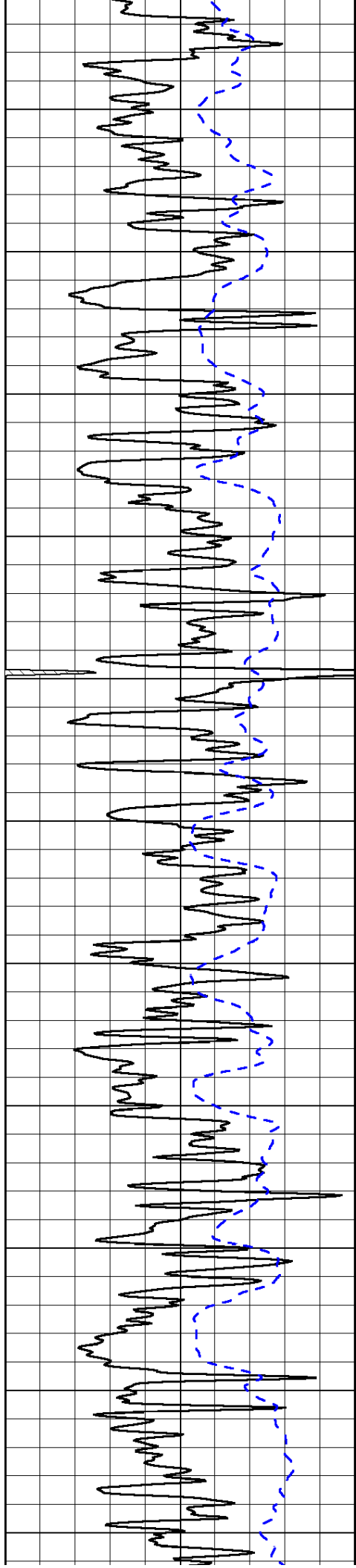
50	Shallow Resistivity	500
50	Deep Resistivity	500

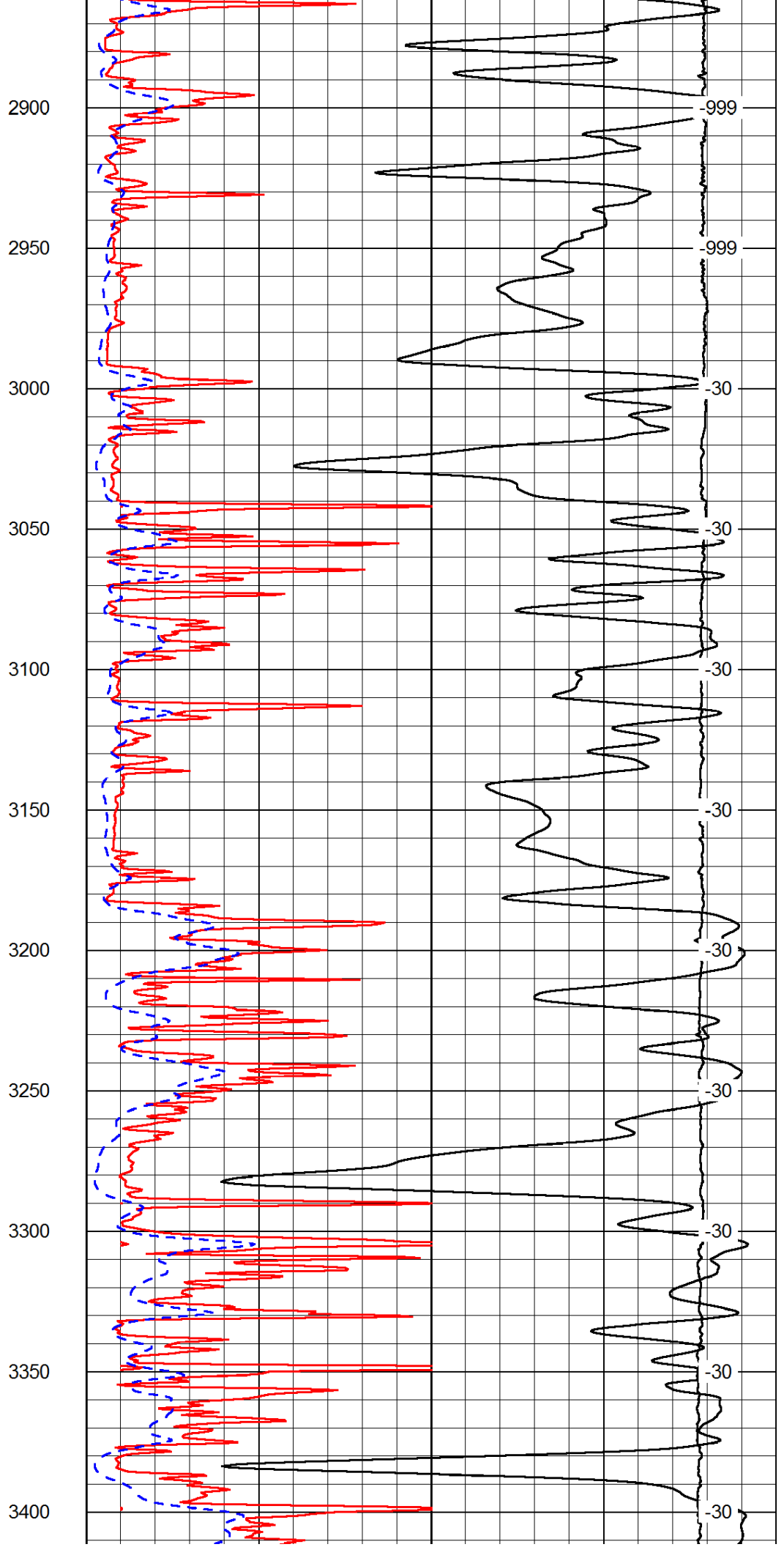
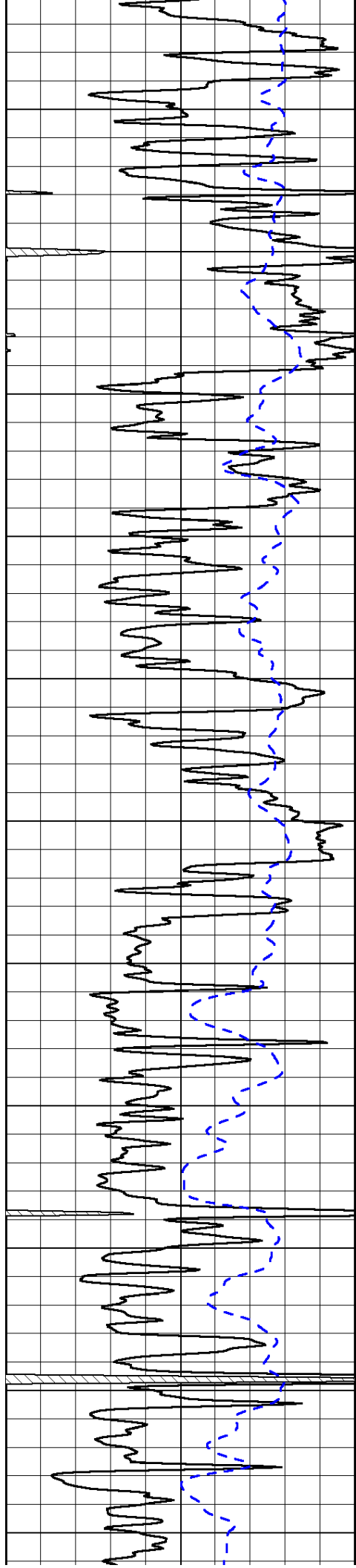


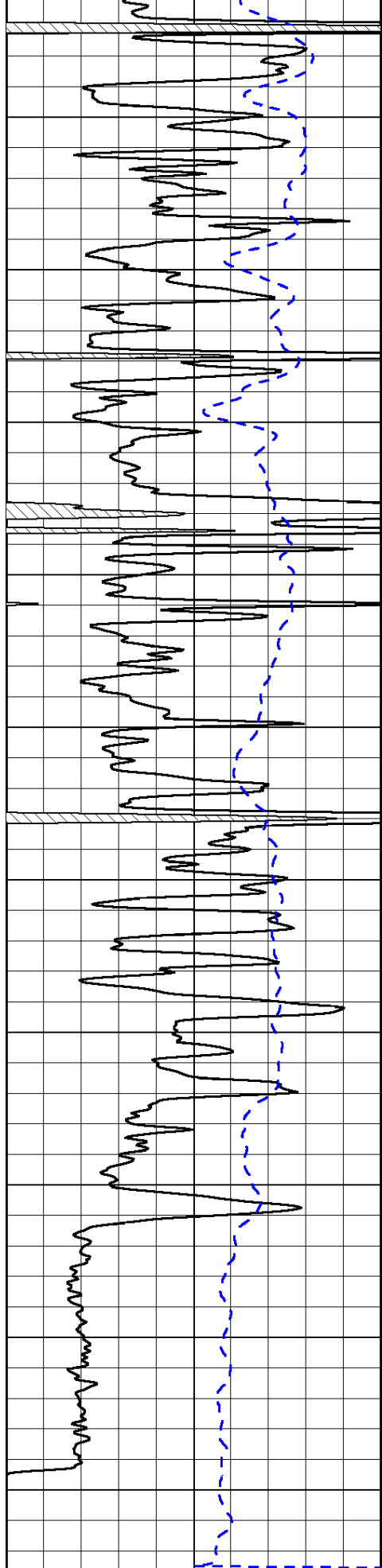




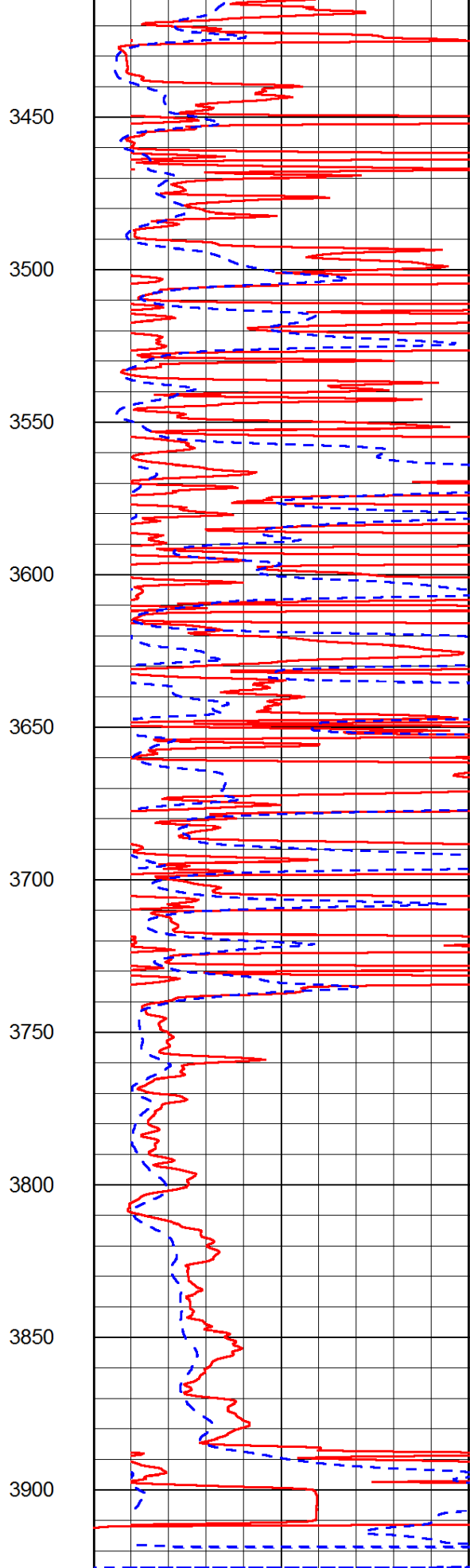




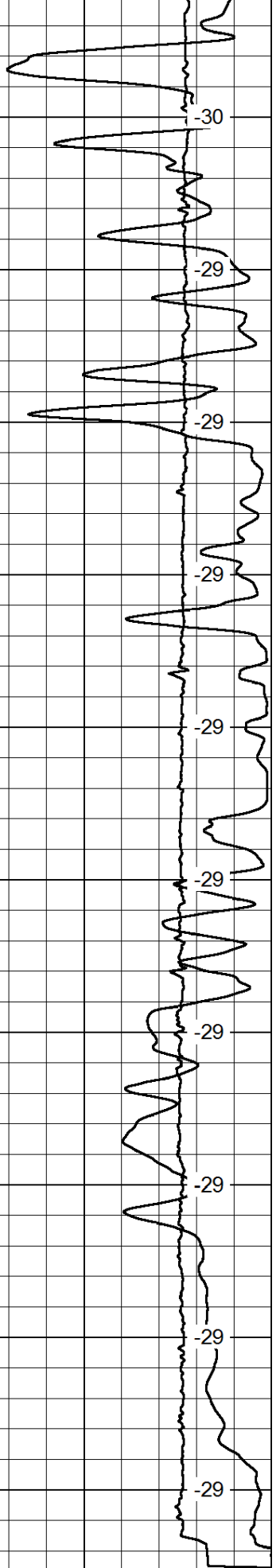




0      Gamma Ray      150  
 -200      SP (mV)      0



0      Shallow Resistivity      50  
 0      Deep Resistivity      50  
 1000      Conductivity      0



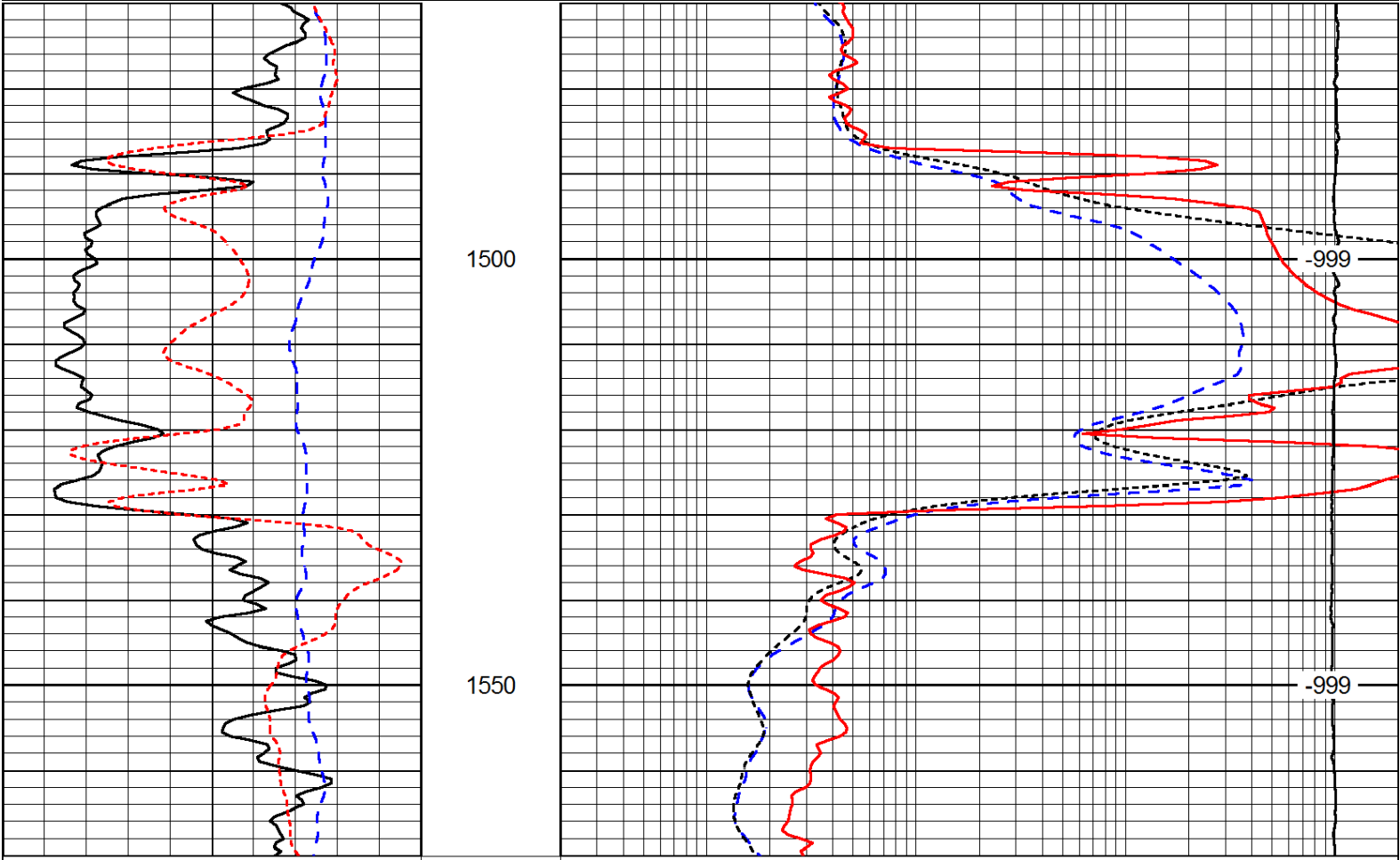
LSPD



15000	Line Tension	0
50	Shallow Resistivity	500
50	Deep Resistivity	500

Database File: c:\warrior\data\staab\_mary-ann #1\staab\_oil\_mary\_ann\_1hd.db  
 Dataset Pathname: DIL/stabstk  
 Presentation Format: dil  
 Dataset Creation: Sat Feb 09 13:50:36 2013  
 Charted by: Depth in Feet scaled 1:240

0	Gamma Ray	150	0.2	Deep Resistivity	2000
-200	SP (mV)	0	0.2	Medium Resistivity	2000
-160	RxoRt	40	0.2	Shallow Resistivity	2000
			15000	Line Tension	0
					LSPD



0	Gamma Ray	150	0.2	Deep Resistivity	2000
-200	SP (mV)	0	0.2	Medium Resistivity	2000
-160	RxoRt	40	0.2	Shallow Resistivity	2000
			15000	Line Tension	0
					LSPD

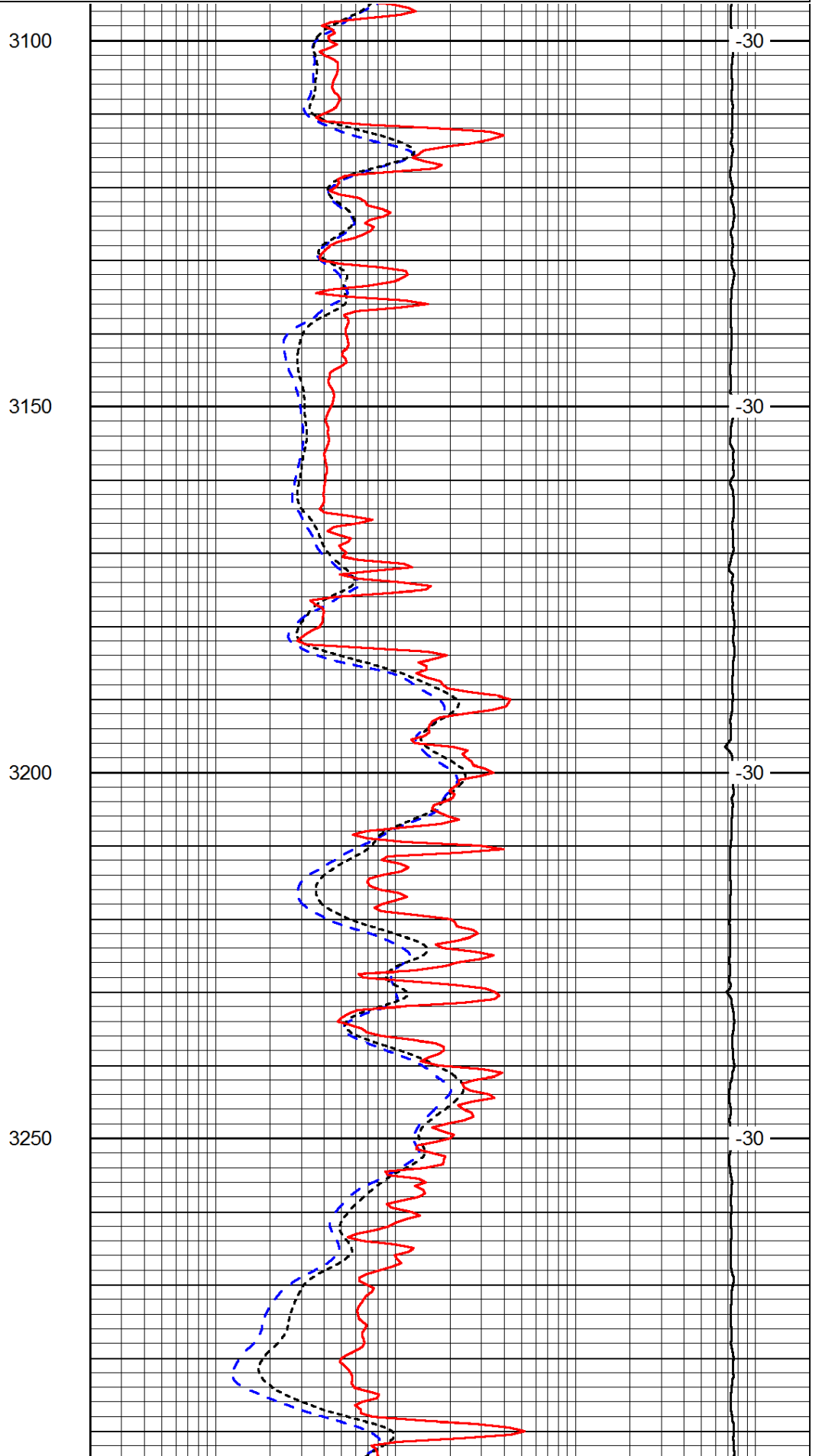
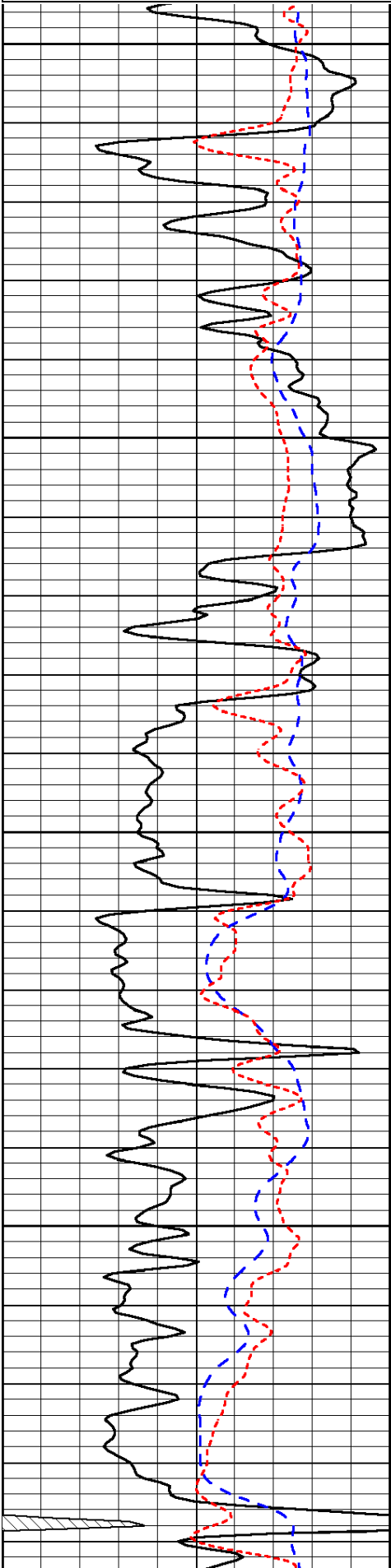
Database File: c:\warrior\data\staab\_mary-ann #1\staab\_oil\_mary\_ann\_1hd.db  
 Dataset Pathname: DIL/stabstk  
 Presentation Format: dil  
 Dataset Creation: Sat Feb 09 13:50:36 2013  
 Charted by: Depth in Feet scaled 1:240

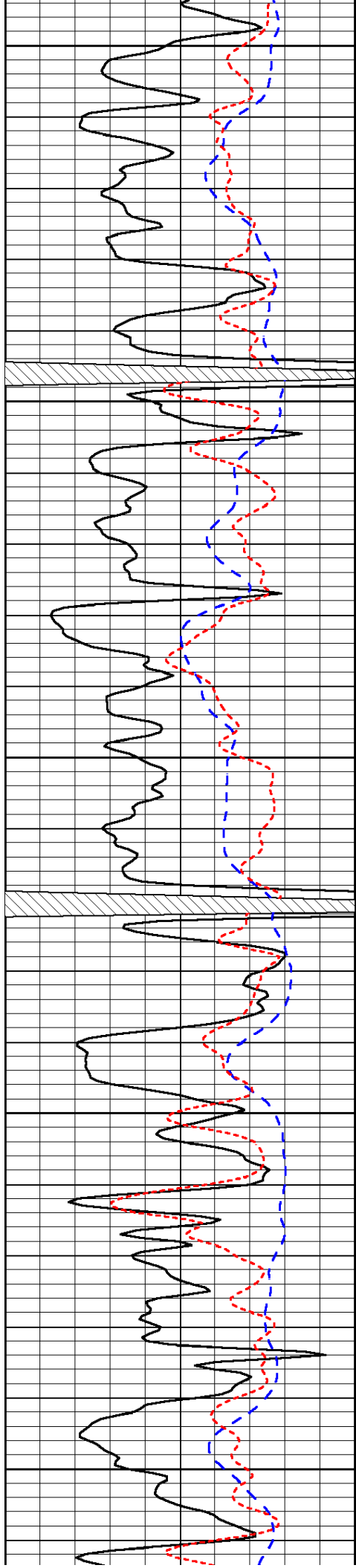
0	Gamma Ray	150	0.2	Deep Resistivity	2000
---	-----------	-----	-----	------------------	------

-200	SP (mV)	0
-160	RxoRt	40

0.2	Medium Resistivity	2000
0.2	Shallow Resistivity	2000
15000	Line Tension	0

LSPD





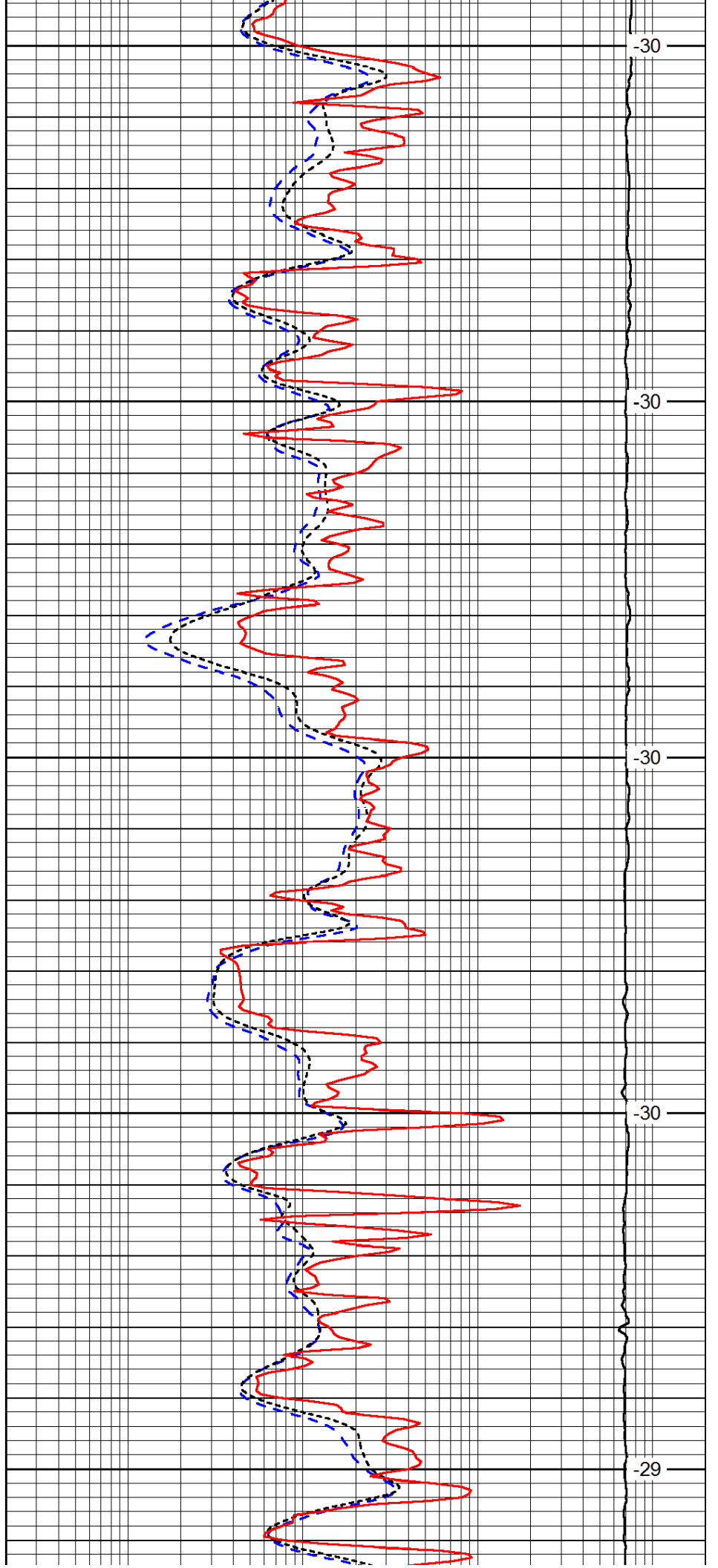
3300

3350

3400

3450

3500



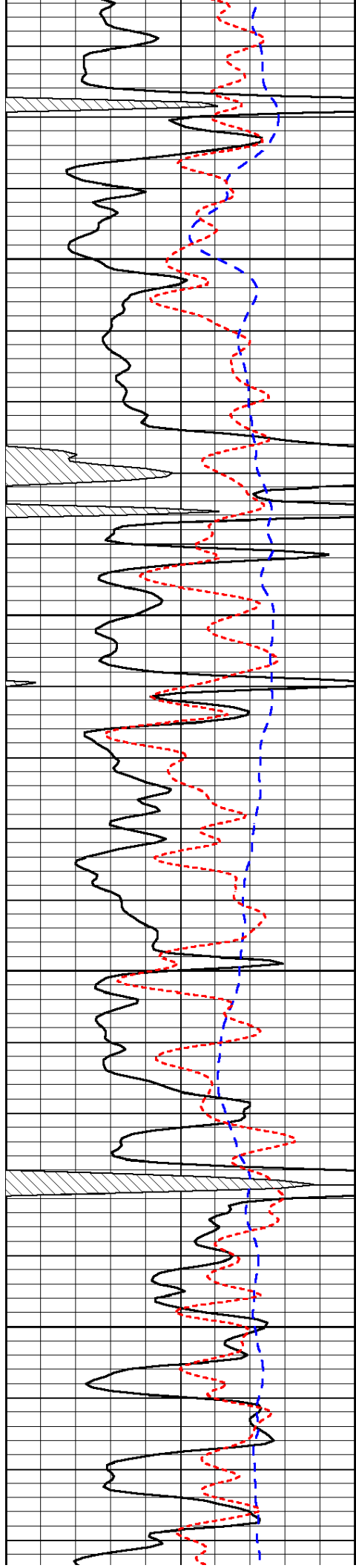
-30

-30

-30

-30

-29

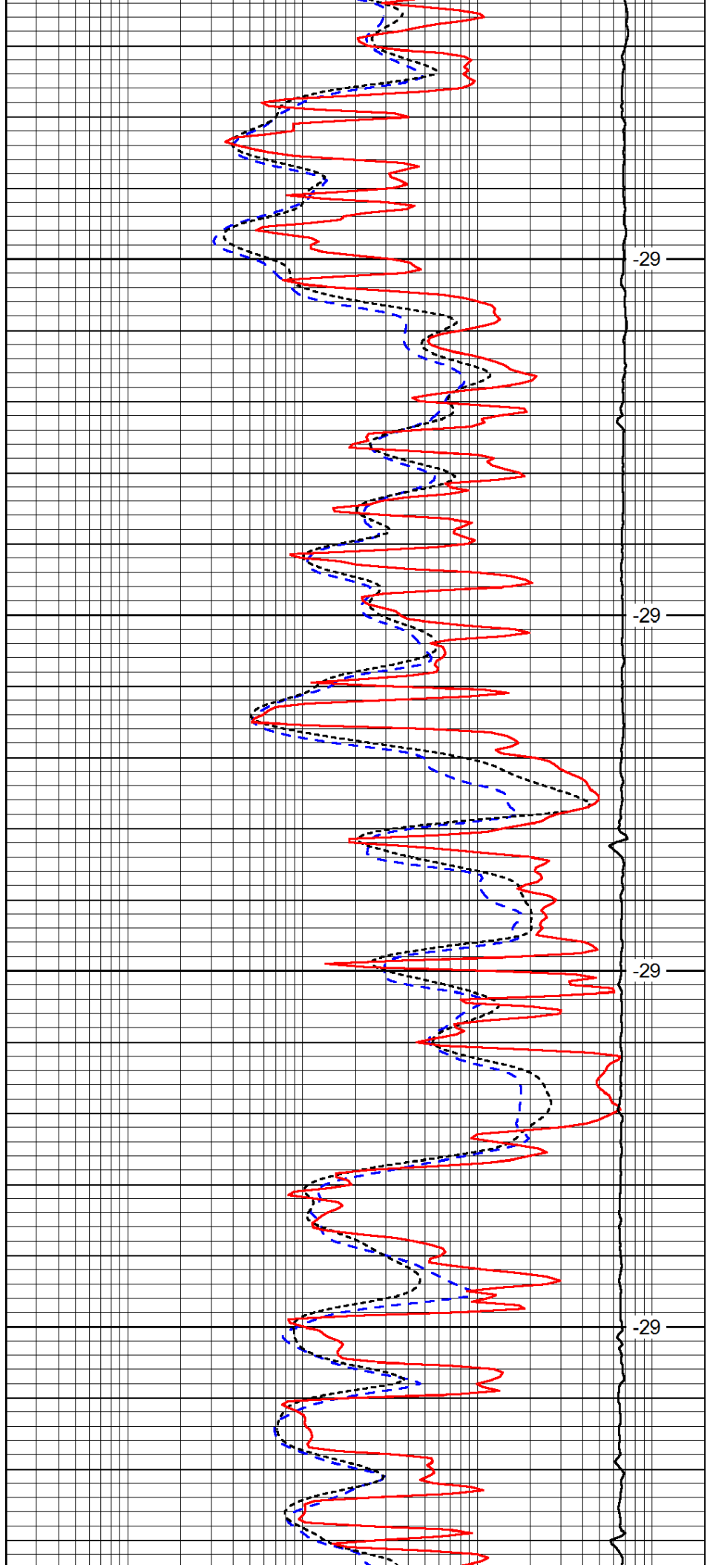


3550

3600

3650

3700

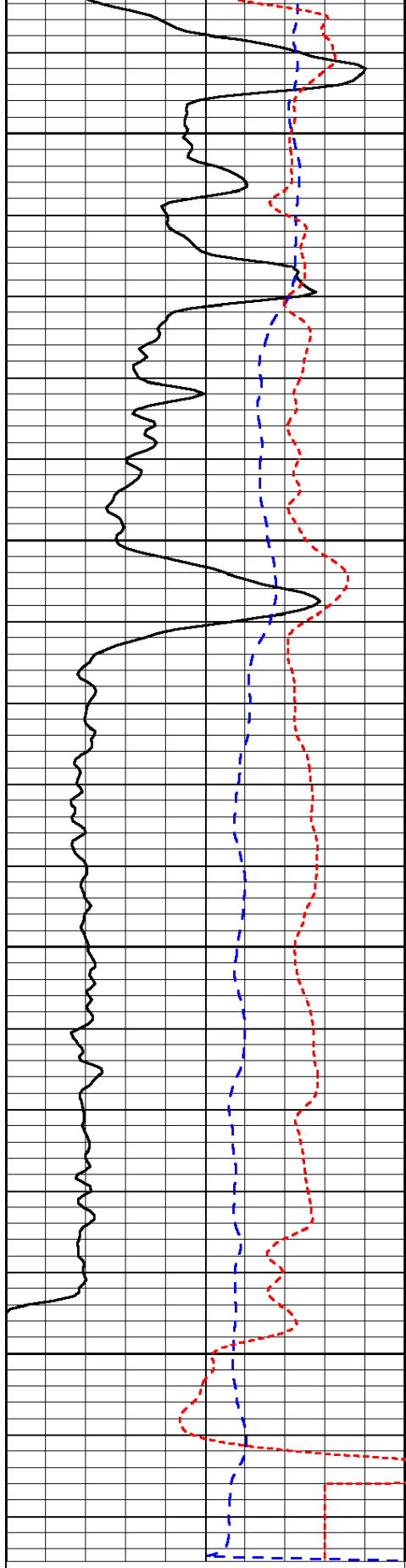


-29

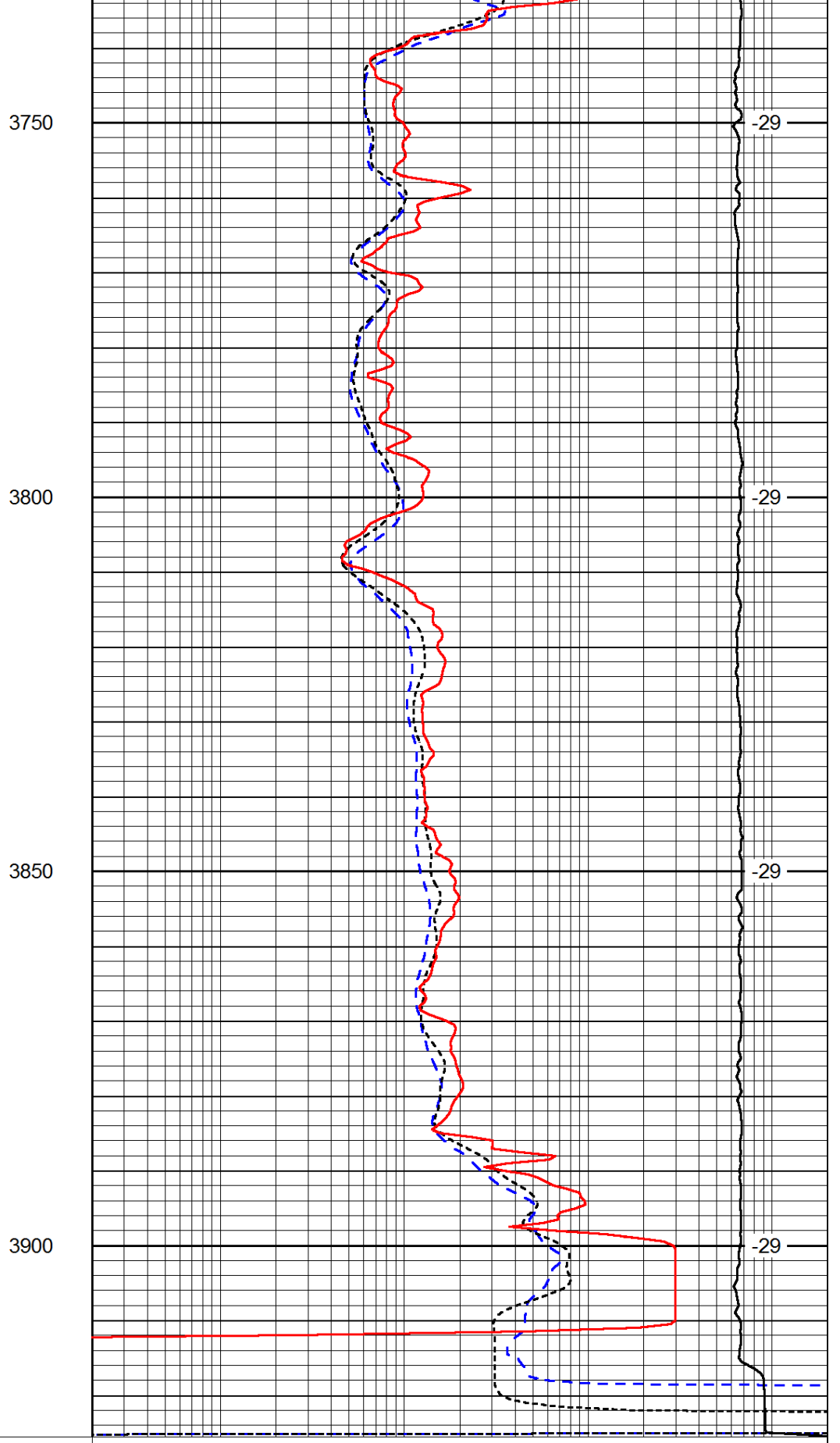
-29

-29

-29



0	Gamma Ray	150
-200	SP (mV)	0
-160	RxoRt	40



0.2	Deep Resistivity	2000
0.2	Medium Resistivity	2000
0.2	Shallow Resistivity	2000
15000	Line Tension	0

LSPD