



Pioneer Energy Services

Microresistivity Log

API No. 15-135-25,539-00-00

Company: American Warrior, Inc.
 Well: Uehling Unit No. 1 - 18
 Field: Unknown
 County: Ness State: Kansas
 Location: 1794' FNL & 2433' FEL
 Sec: 18 Twp: 20 S Rge: 25 W

Other Services: CNL/CDL, DIL/BHCS
 Elevation: K.B. 2497, D.F. 2486, G.L. 2486

Permanent Datum	Ground Level	Elevation 2486
Log Measured From	Kelly Bushing	11 Ft. Above Perm. Datum
Drilling Measured From	Kelly Bushing	
Date	3/1/2013	
Run Number	Two	
Depth Driller	4600	
Depth Logger	4600	
Bottom Logged Interval	4599	
Top Log Interval	3800	
Casing Driller	8.625 @ 212	
Casing Logger	209	
Bit Size	7.875	
Type Fluid in Hole	Chemical	
Salinity, ppm CL	6400	
Density / Viscosity	9.3 74	
pH / Fluid Loss	9.5 8.8	
Source of Sample	Flowline	
Rm @ Meas. Temp	.30 @ 52	
Rmf @ Meas. Temp	.23 @ 52	
Rmc @ Meas. Temp	.41 @ 52	
Source of Rmf / Rmc	Charts	
Rm @ BHT	.13 @ 122	
Operating Rig Time	6 Hours	
Max Rec. Temp. F	122	
Equipment Number	17	
Location	Hays	
Recorded By	D. Martin	
Witnessed By	Kevin Timson	

<<< Fold Here >>>

All interpretations are opinions based on inferences from electrical or other measurements and we cannot and do not guarantee the accuracy or correctness of any interpretation, and we shall not, except in the case of gross or willful negligence on our part, be liable or responsible for any loss, costs, damages, or expenses incurred or sustained by anyone resulting from any interpretation made by any of our officers, agents or employees. These interpretations are also subject to our general terms and conditions set out in our current Price Schedule.

Comments

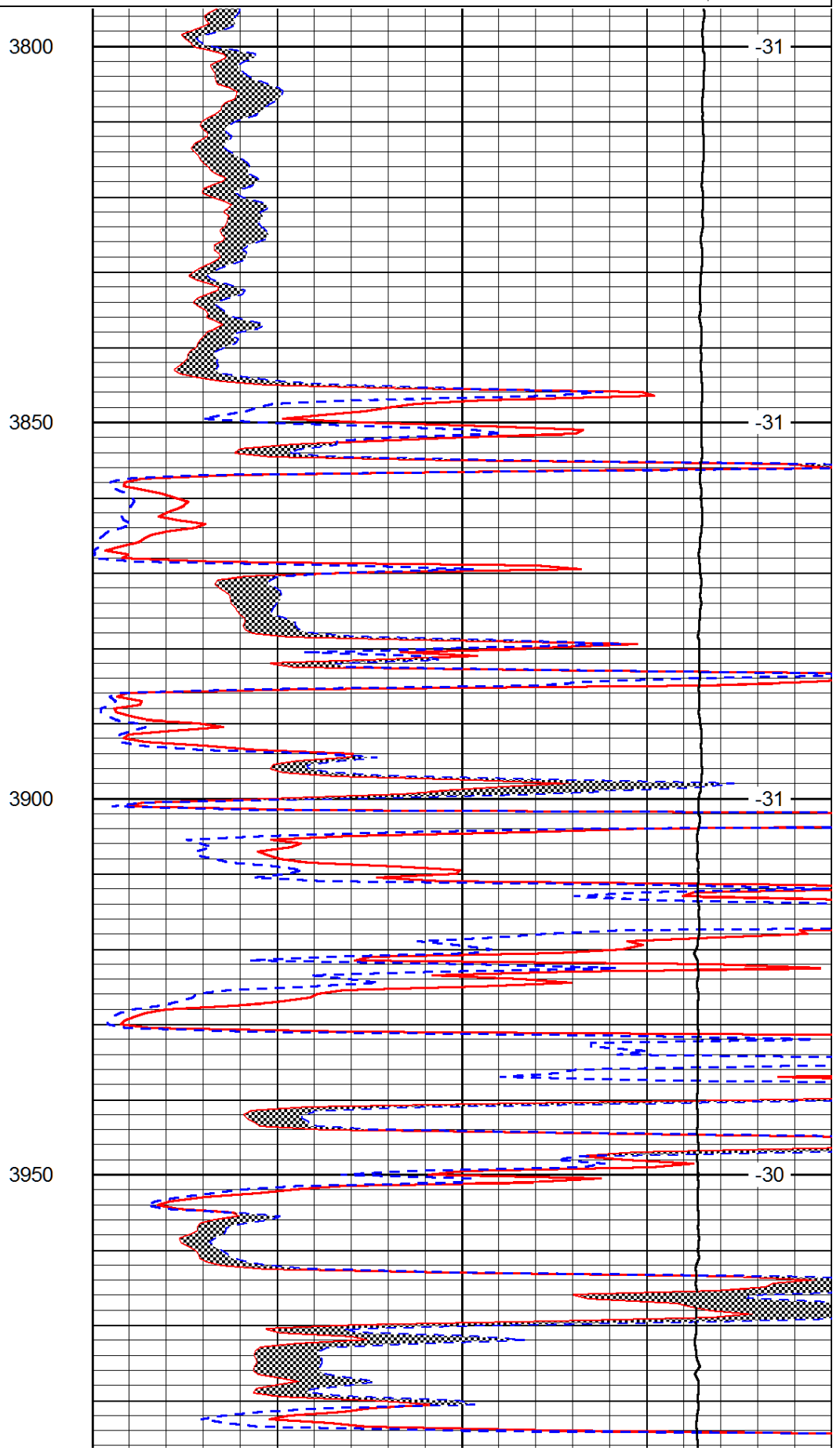
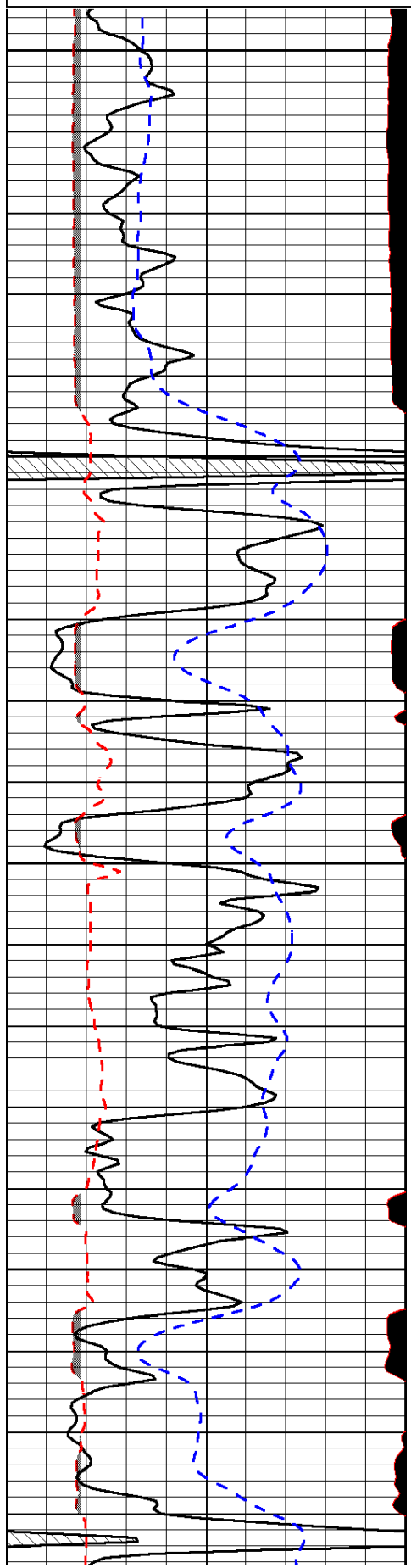
Thank you for using Log-Tech, Inc.
 (785) 625-3858

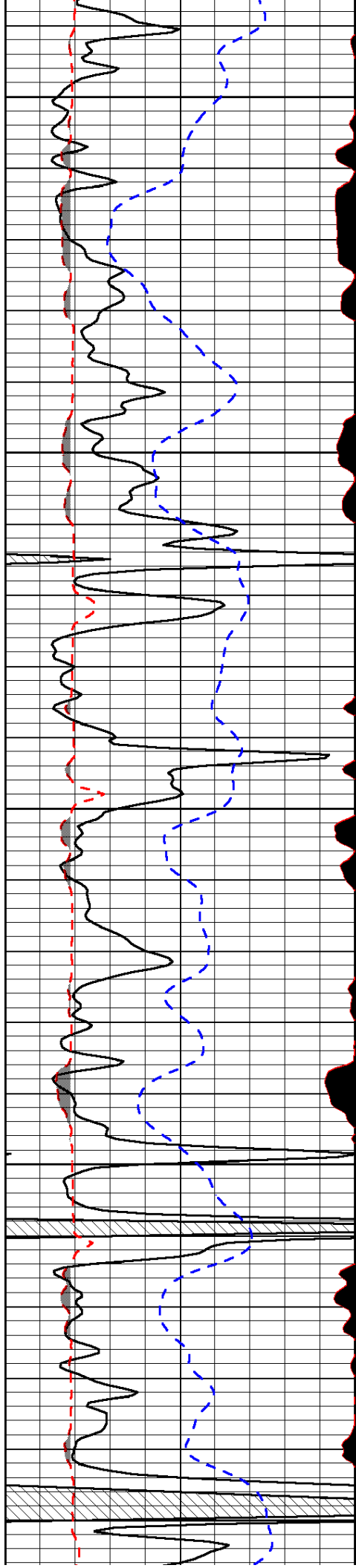
Ness City, KS
 6 S to 60 Rd., 12 W to G Rd.,
 2 S to 40 Rd., 1/2 W, S Into

Database File: amerhd.db
 Dataset Pathname: DIL/amwastk
 Presentation Format: micro
 Dataset Creation: Fri Mar 01 22:06:12 2013
 Charted by: Depth in Feet scaled 1:240

0	Gamma Ray (GAPI)	150
6	MCAL (in)	16
2.875	Mud Cake (in)	7.875
-200	SP (mV)	0

0	Micro Inverse 1 X 1 (Ohm-m)	40
0	Micro Normal 2" (Ohm-m)	40
10000	Line Weight (lb)	0
		LSPD (ft/min)





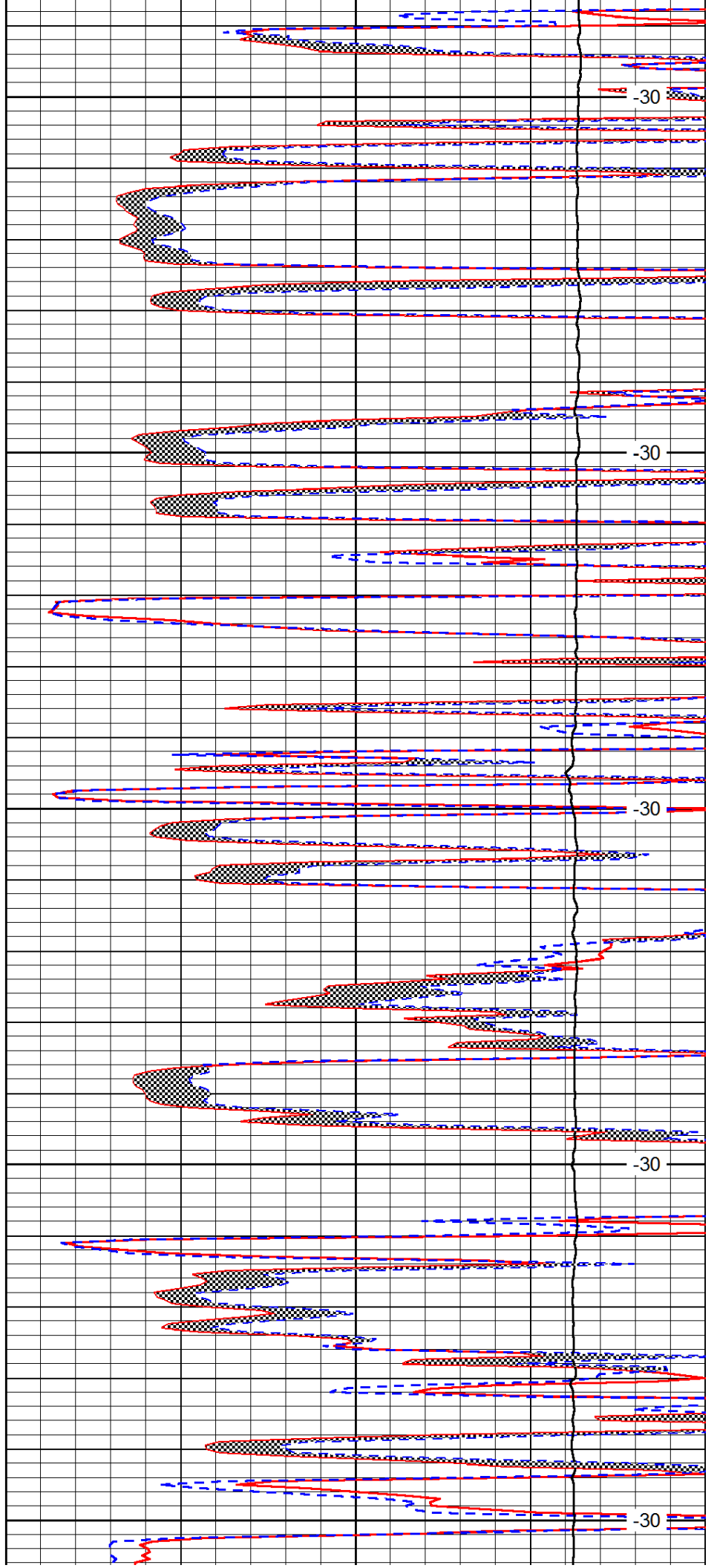
4000

4050

4100

4150

4200



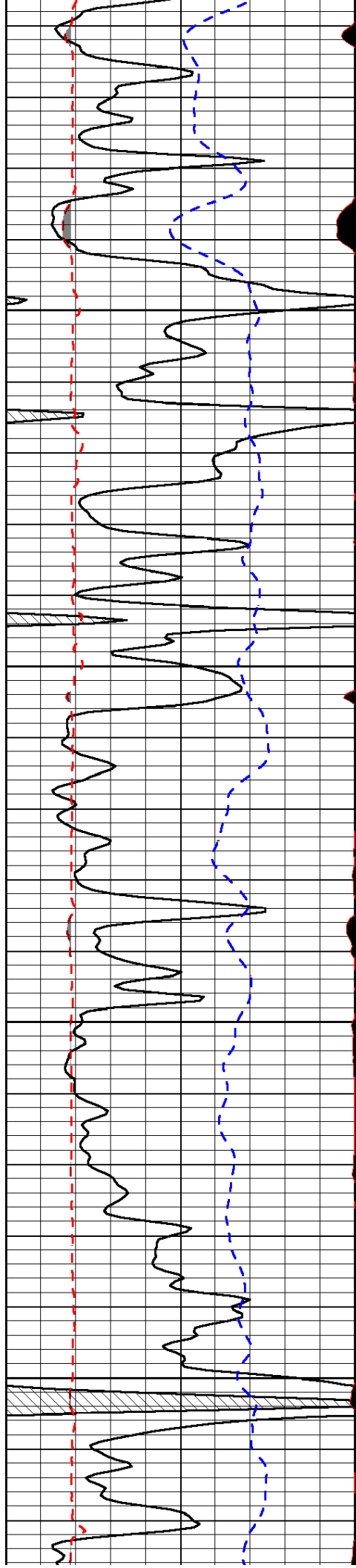
-30

-30

-30

-30

-30

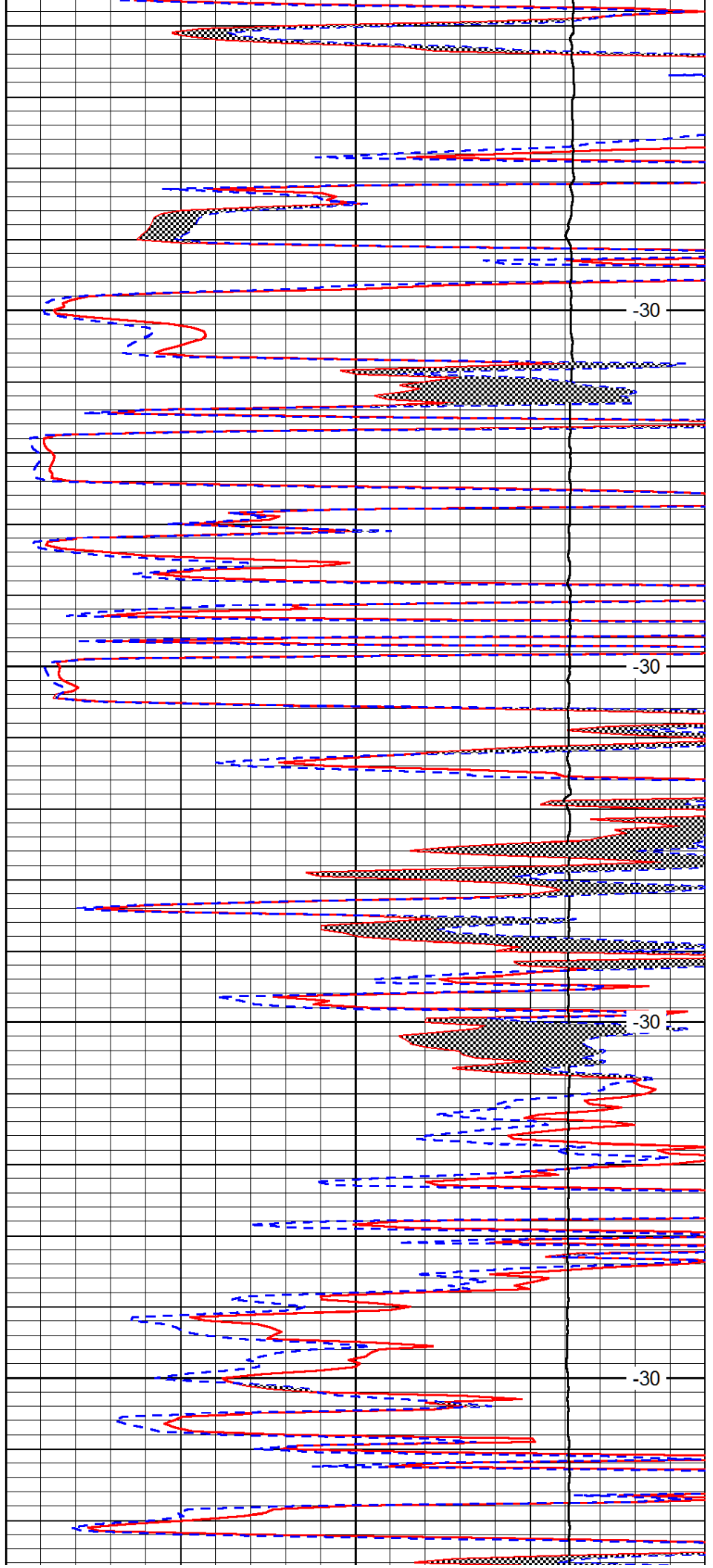


4250

4300

4350

4400

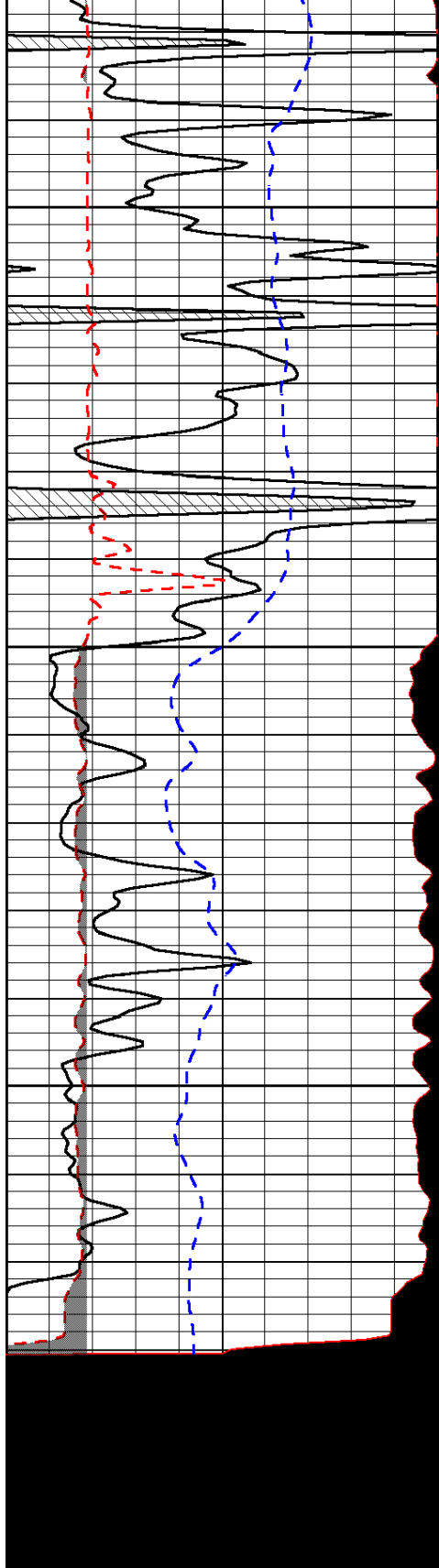


-30

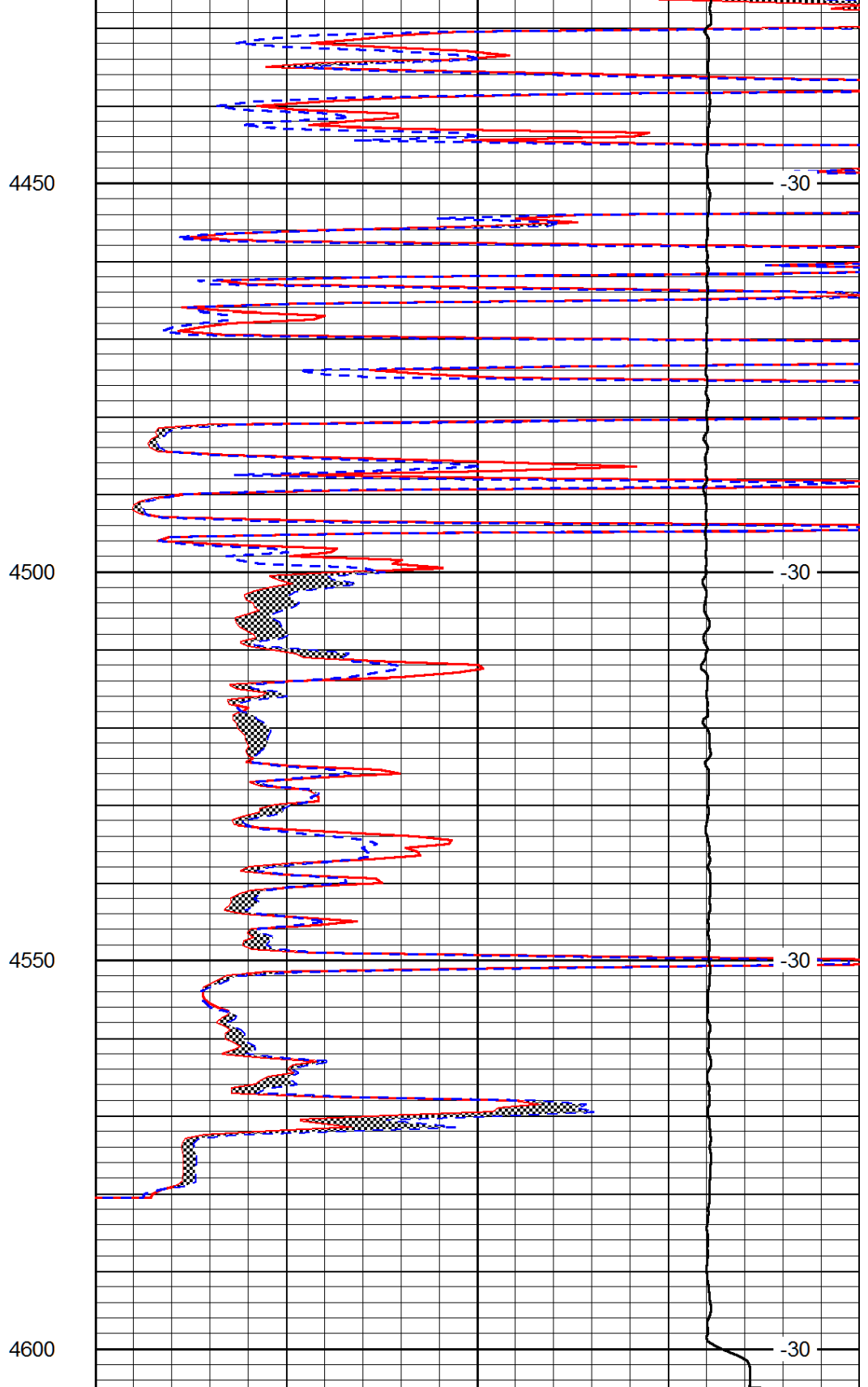
-30

-30

-30



0	Gamma Ray (GAPI)	150
6	MCAL (in)	16
2.875	Mud Cake (in)	7.875
-200	SP (mV)	0



0	Micro Inverse 1 X 1 (Ohm-m)	40
0	Micro Normal 2" (Ohm-m)	40
10000	Line Weight (lb)	0

LSPD
(ft/min)