



Pioneer Energy Services

## Borehole Compensated Sonic Log

API No.	15-135-25,539-00-00		
Company	American Warrior, Inc.		
Well	Uehling Unit No. 1 - 18		
Field	Unknown		
County	Ness		
State	Kansas		
Location	1794' FNL & 2433' FEL		
Sec: 18	Tw: 20 S	Rge: 25 W	Other Services CNL/CDL MEL/DIL
Permanent Datum	Ground Level	Elevation 2486	Elevation
Log Measured From	Kelly Bushing	11 Ft. Above Perm. Datum	K.B. 2497
Drilling Measured From	Kelly Bushing		D.F. 2486
			G.L. 2486

Date	3/1/2013		
Run Number	Two		
Type Log	BHC Sonic		
Depth Driller	4600		
Depth Logger	4600		
Bottom Logged Interval	4589		
Top Logged Interval	200		
Type Fluid In Hole	Chemical		
Salinity, PPM CL	6400		
Density	9.3		
Level	Full		
Max. Rec. Temp. F	122		
Operating Rig Time	6 Hours		
Equipment -- Location	17 Hays		
Recorded By	D. Martin		
Witnessed By	Kevin Timson		

Borehole Record				Casing Record			
Run No.	Bit	From	To	Size	Wgt.	From	To
One	12.25	00	212	8.625	23#	00	212
Two	7.875	212	TD				

<<< Fold Here >>>

All interpretations are opinions based on inferences from electrical or other measurements and we cannot and do not guarantee the accuracy or correctness of any interpretation, and we shall not, except in the case of gross or willful negligence on our part, be liable or responsible for any loss, costs, damages, or expenses incurred or sustained by anyone resulting from any interpretation made by any of our officers, agents or employees. These interpretations are also subject to our general terms and conditions set out in our current Price Schedule.

### Comments

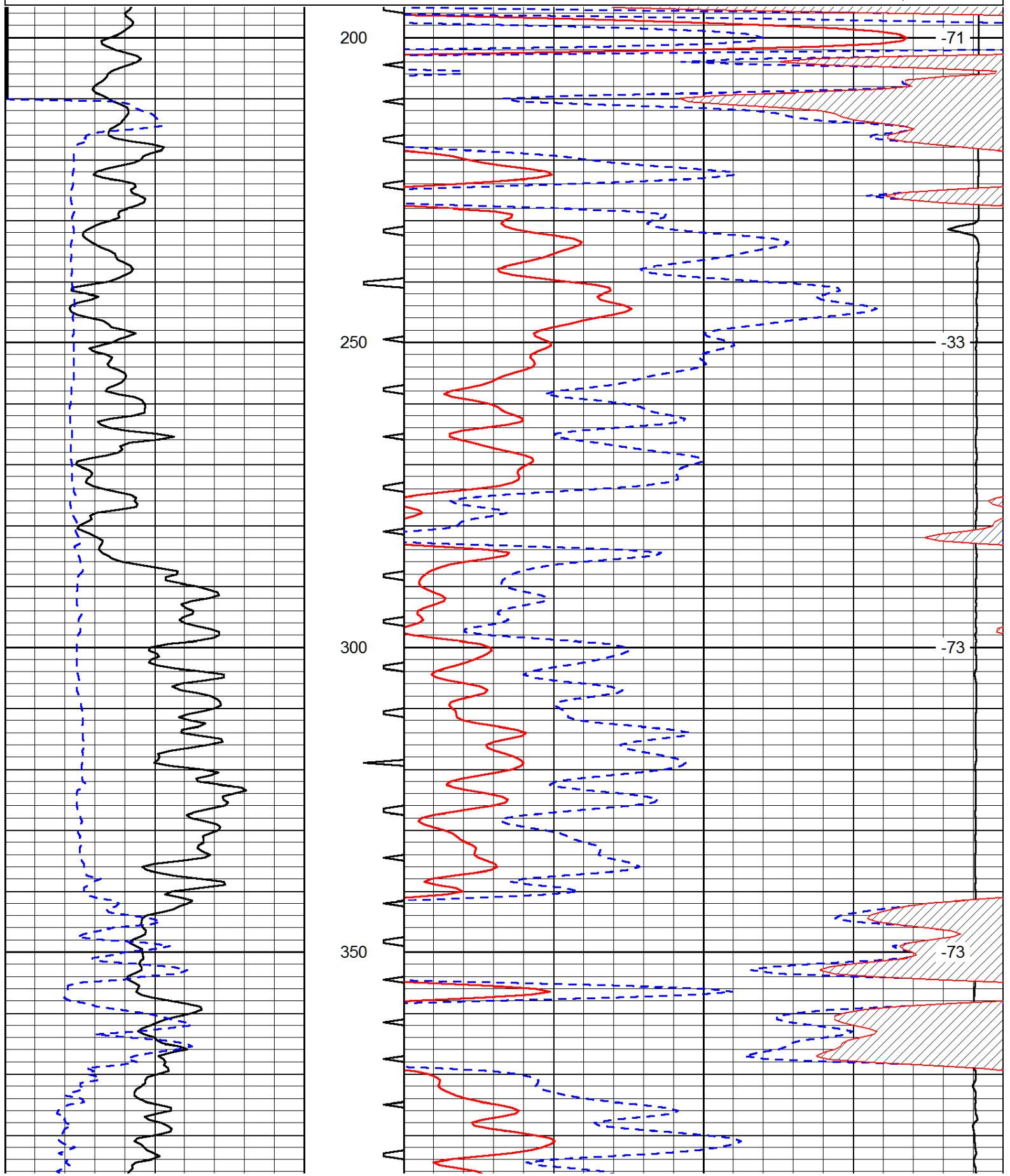
Thank you for using Log-Tech, Inc.  
(785) 625-3858

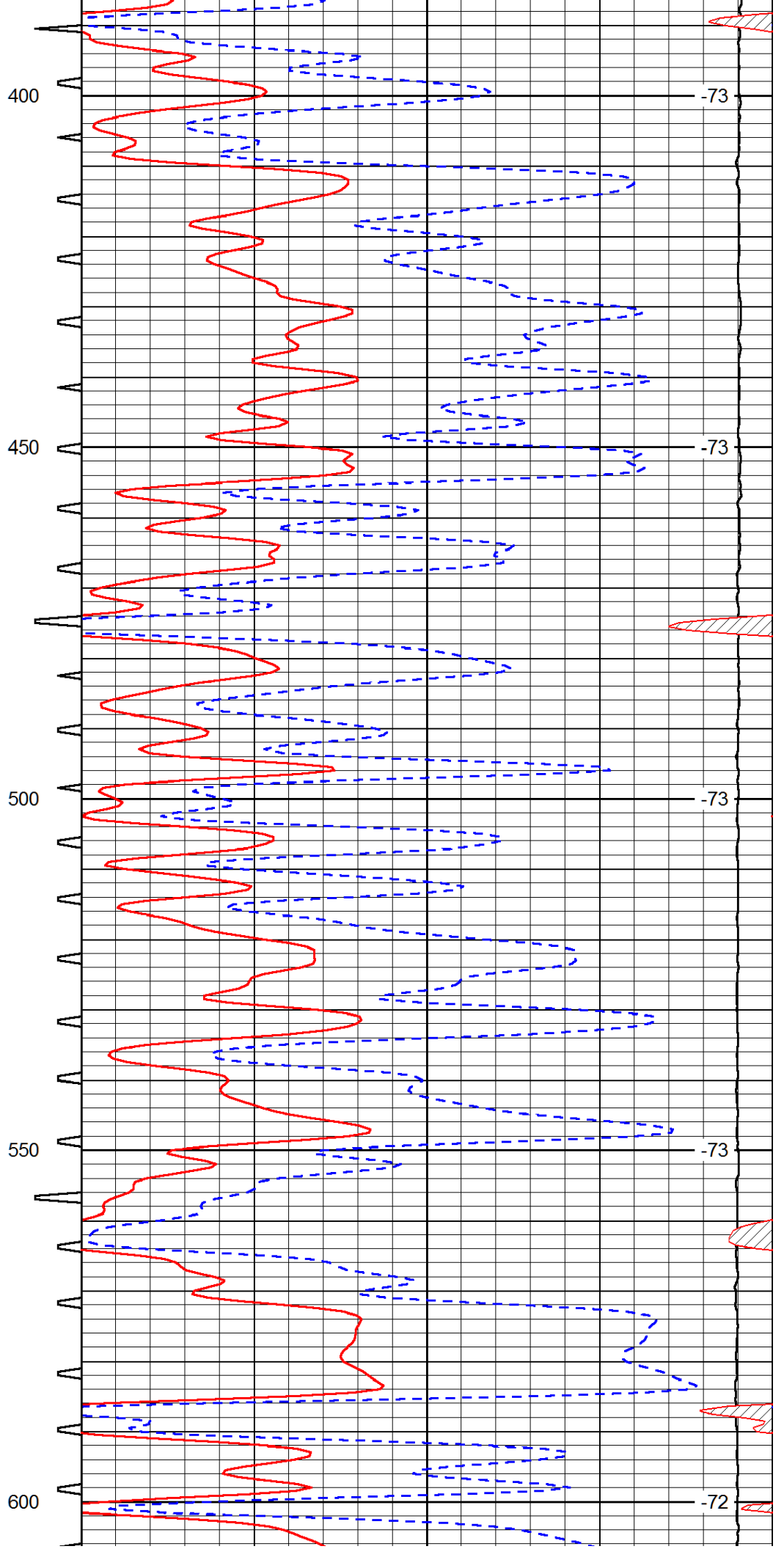
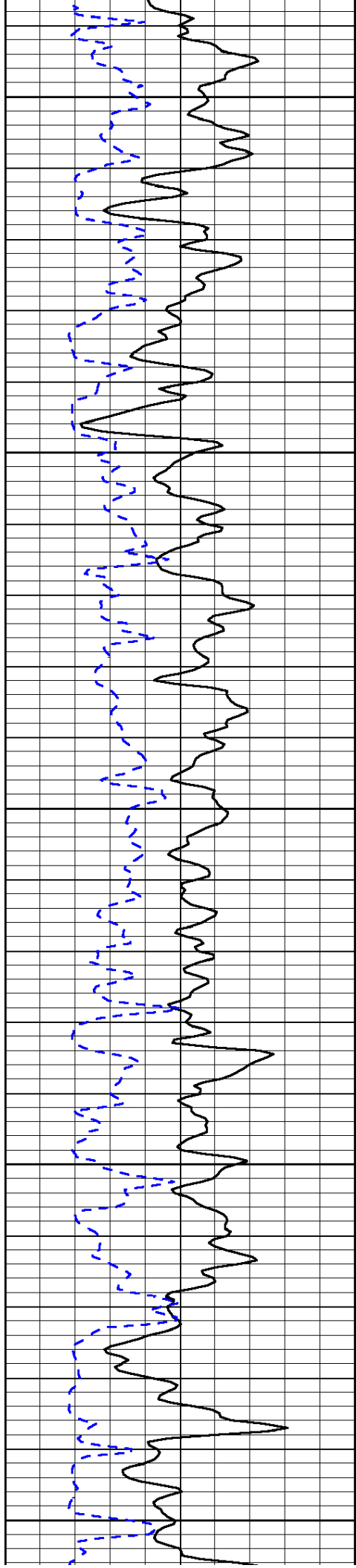
Ness City, KS  
6 S to 60 Rd., 12 W to G Rd.,  
2 S to 40 Rd., 1/2 W, S Into

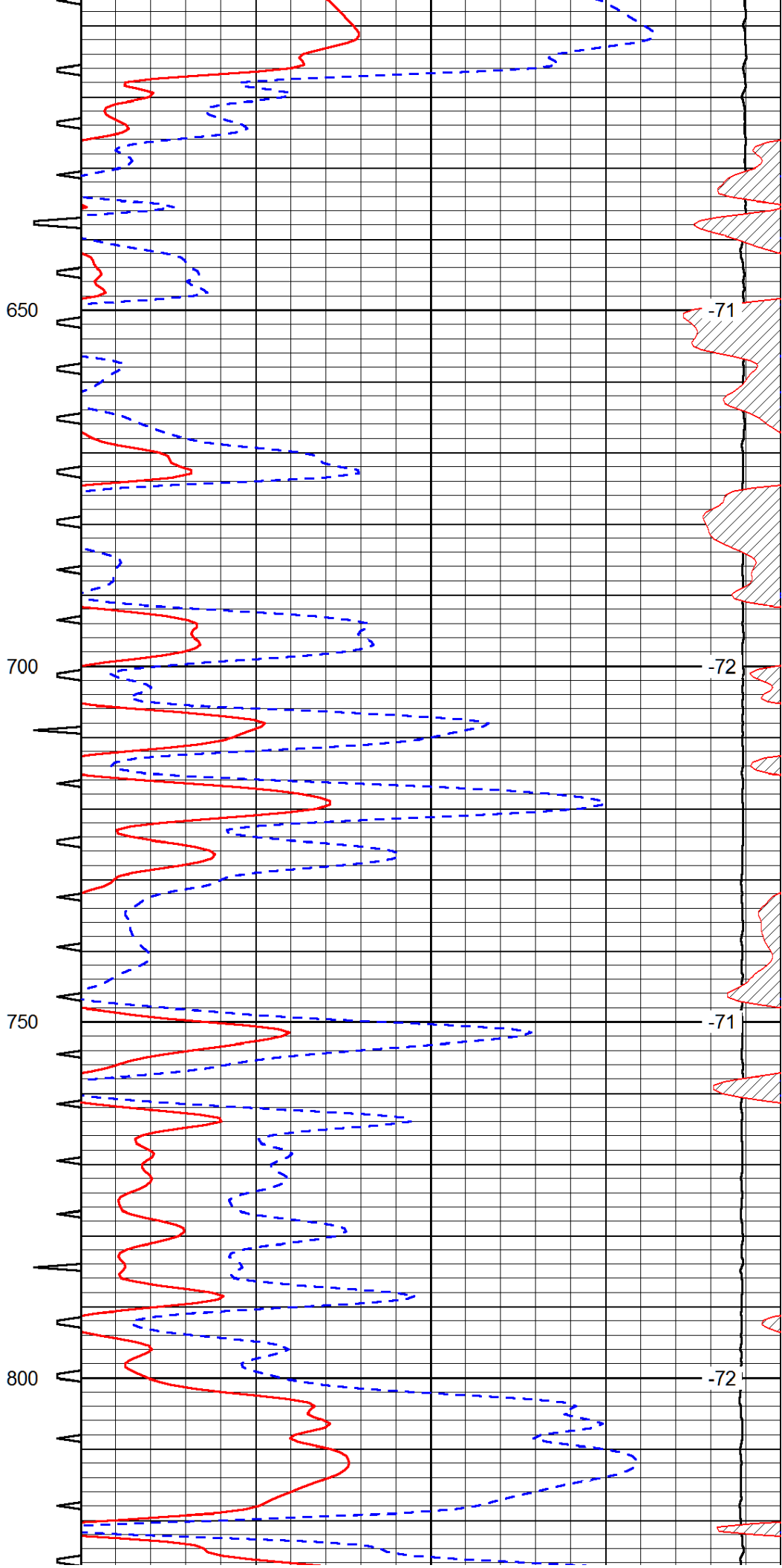
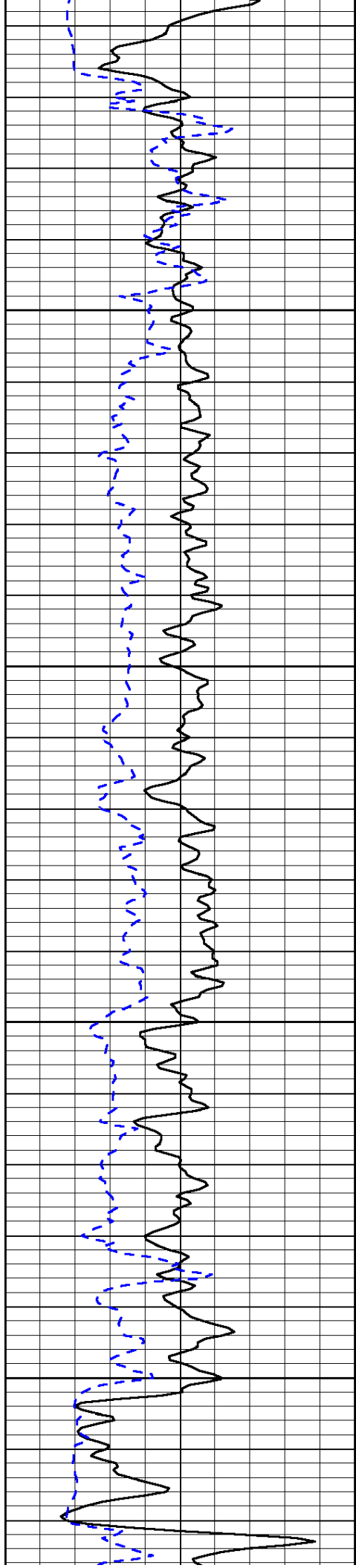
Database File: amerhd.db  
 Dataset Pathname: DIL/amwastk  
 Presentation Format: sonic  
 Dataset Creation: Fri Mar 01 22:06:12 2013  
 Charted by: Depth in Feet scaled 1:240

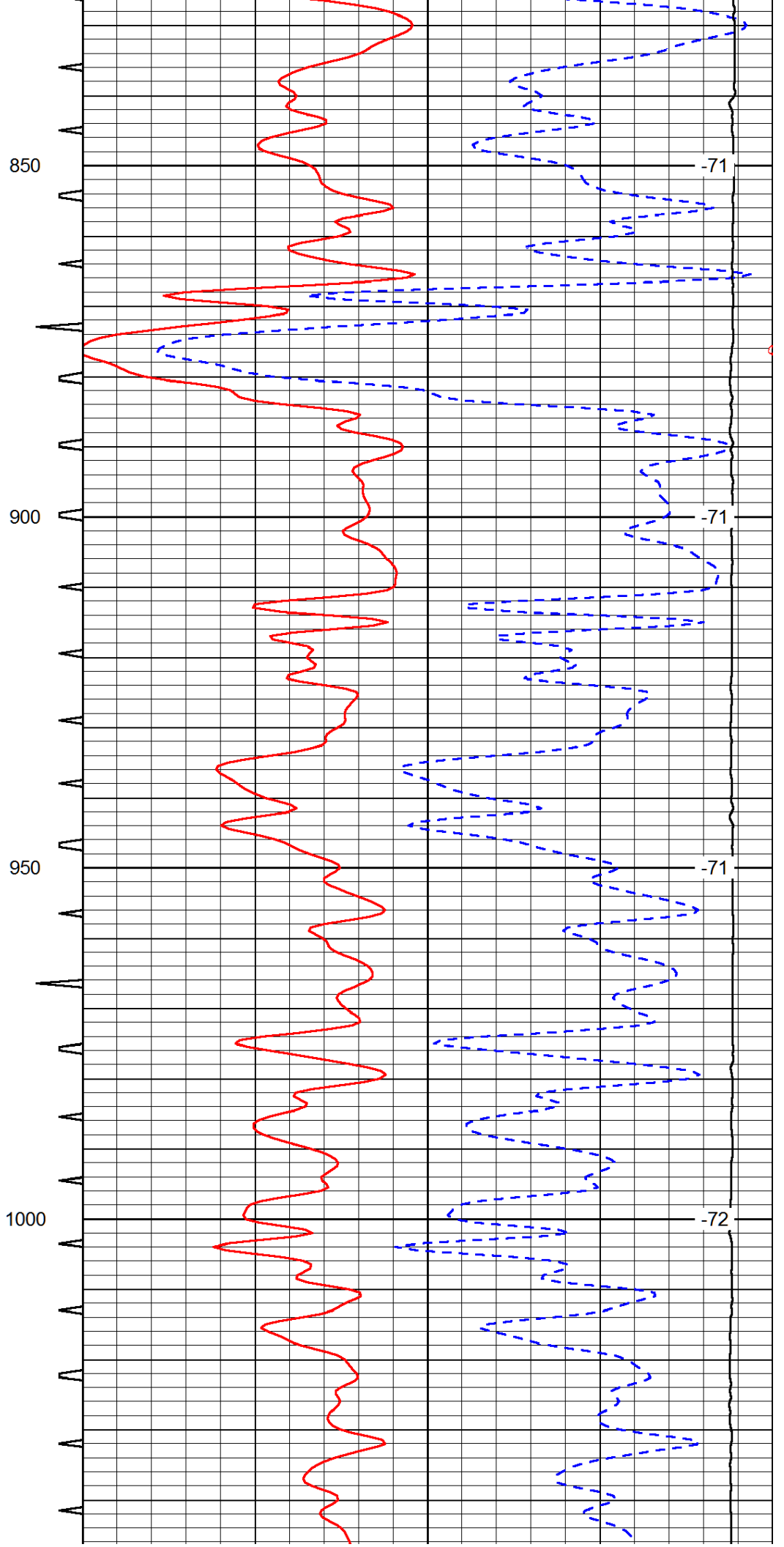
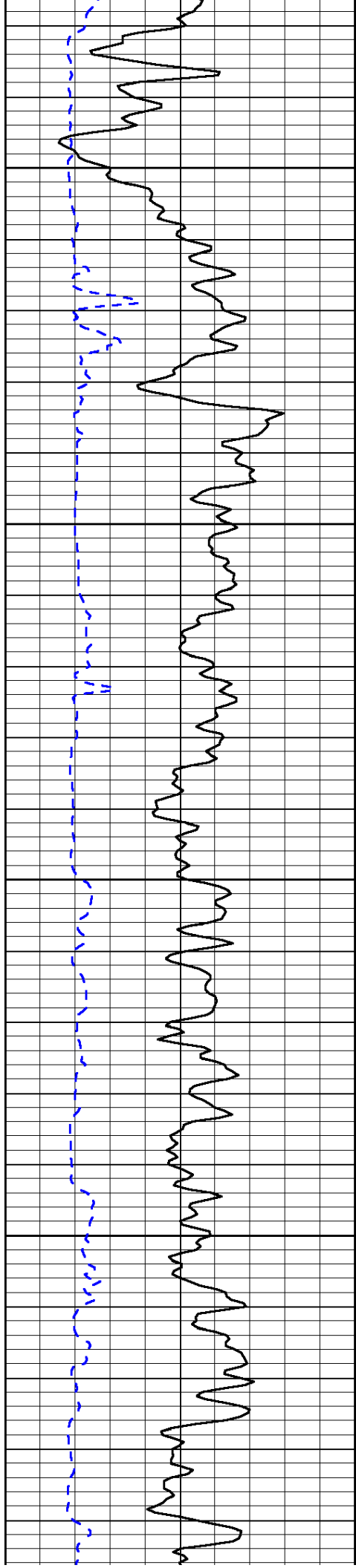
0	Gamma Ray (GAPI)	150	Sonic Int	140	Delta Time (usec/ft) (usec/ft)	40
150	Gamma Ray (GAPI)	300	5 (msec) 0	30	Sonic Porosity (pu)	-10
6	dCAL (in)	16		15000	LTEN (lb) (lb)	0

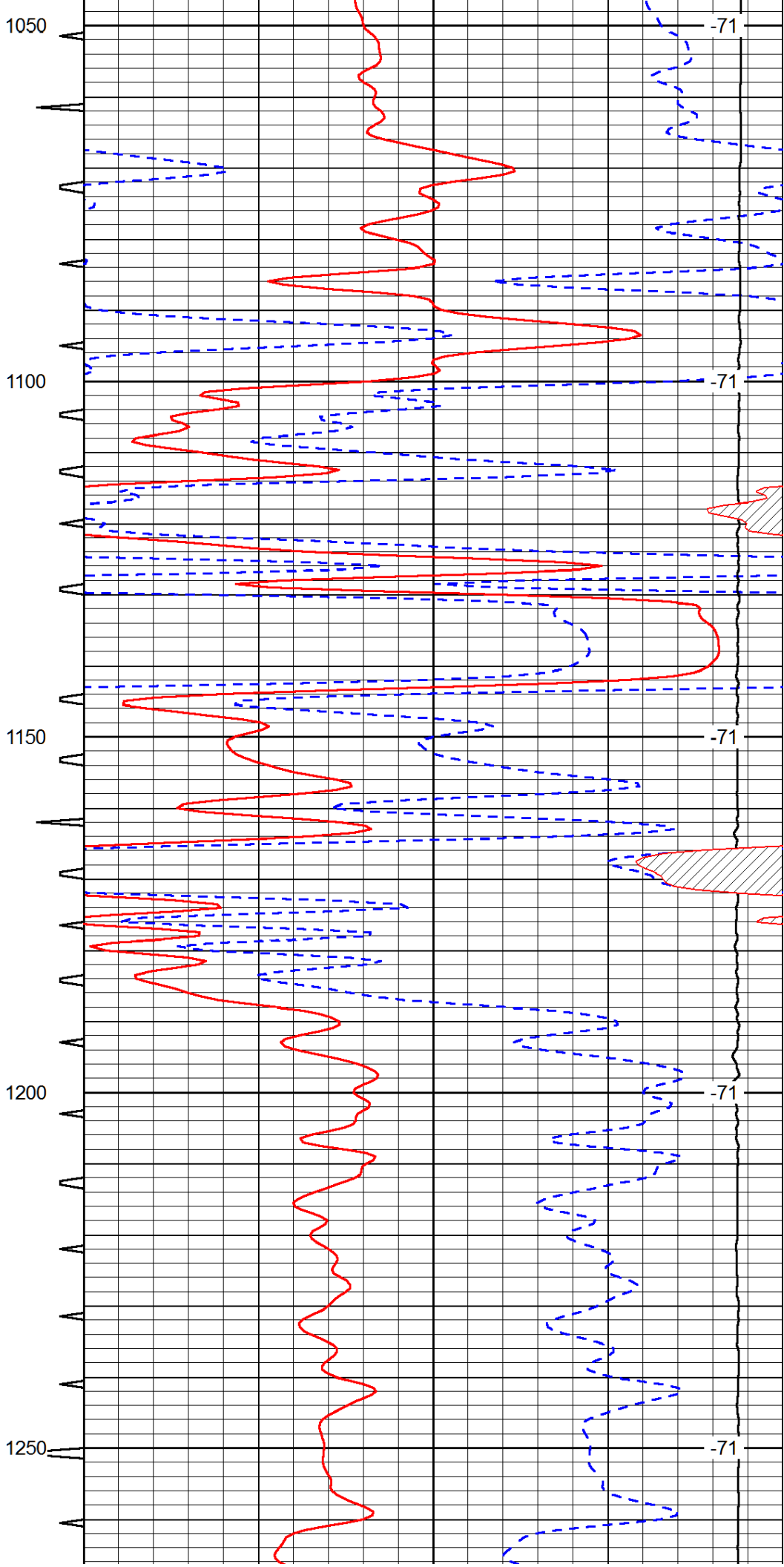
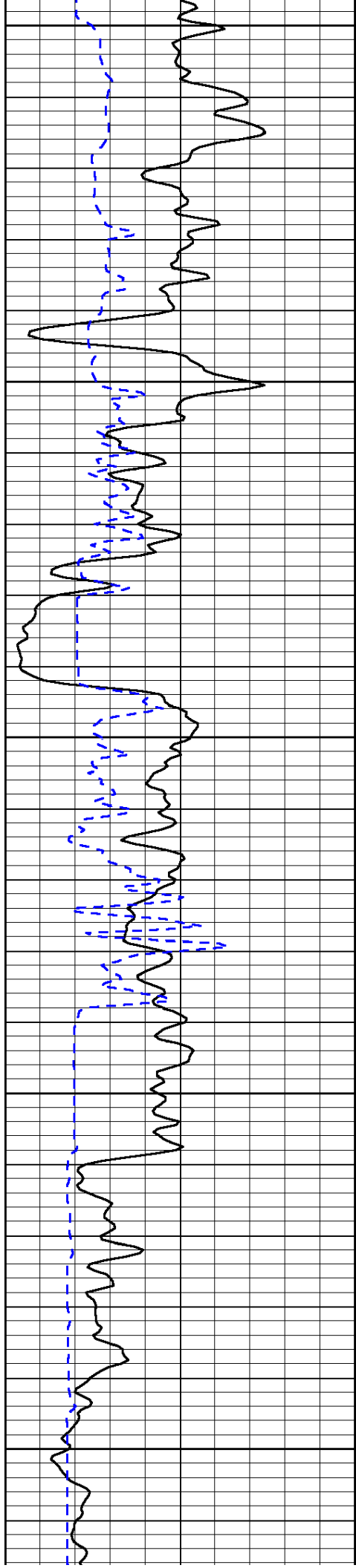
LSPD  
(ft/min)

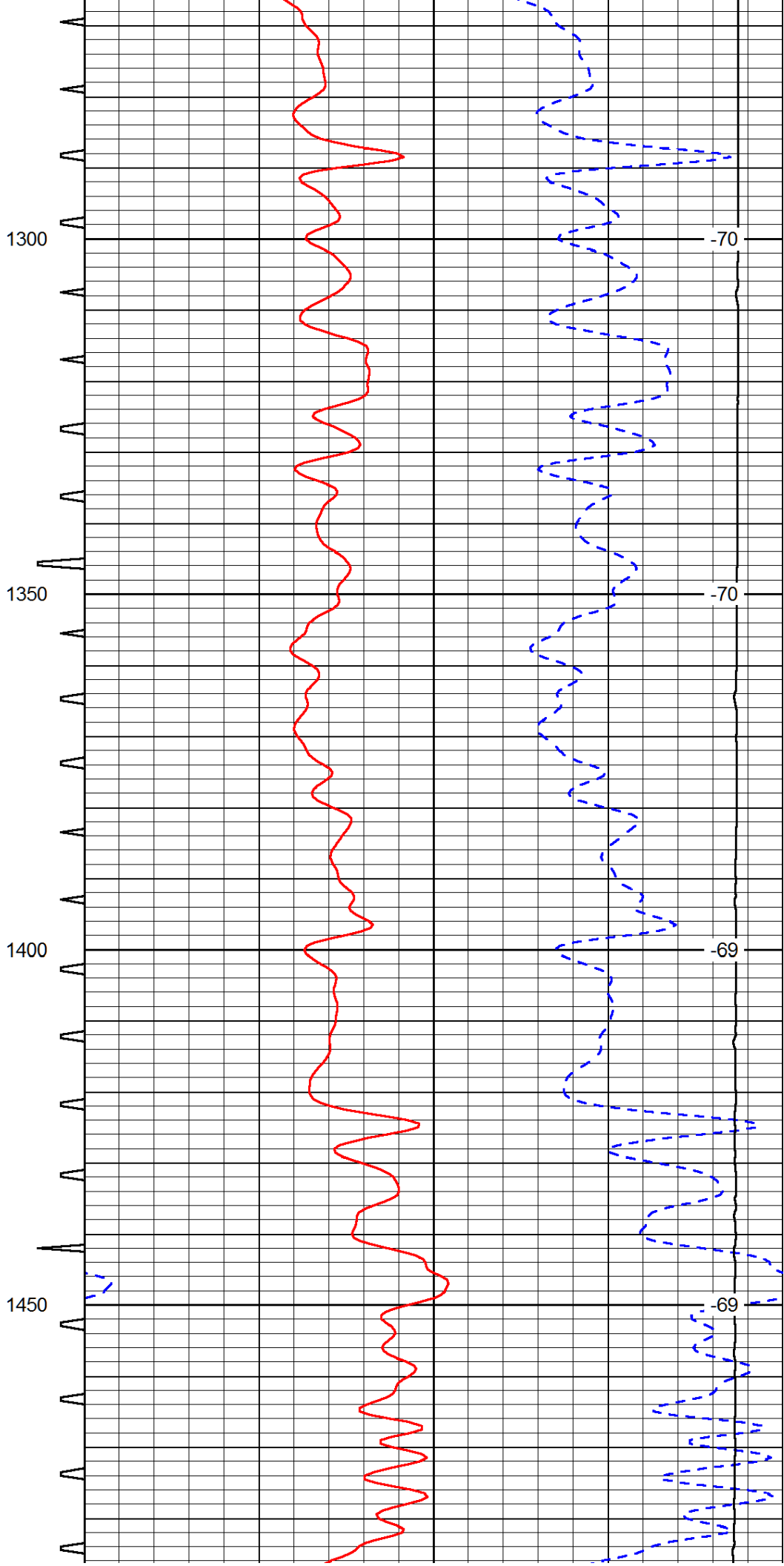
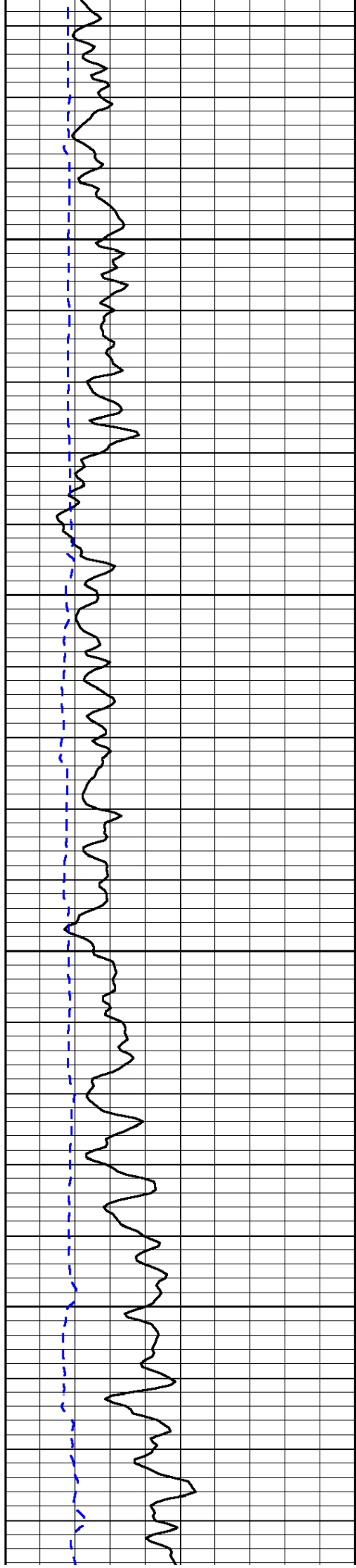


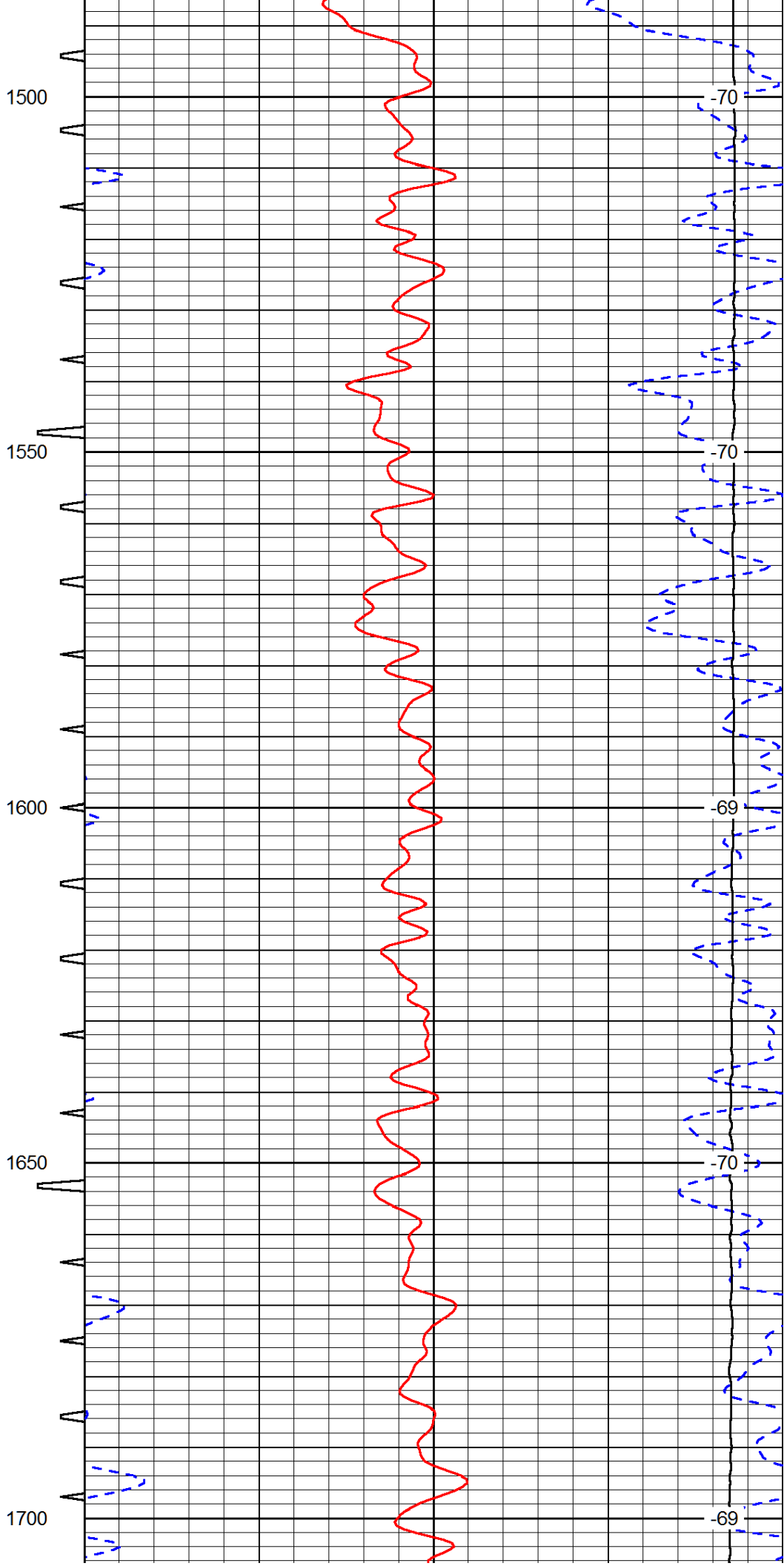
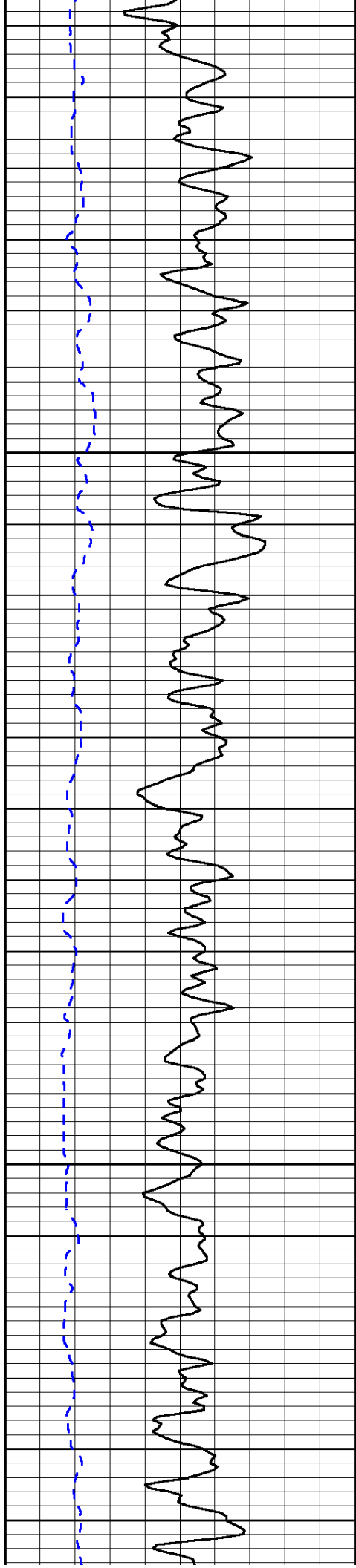




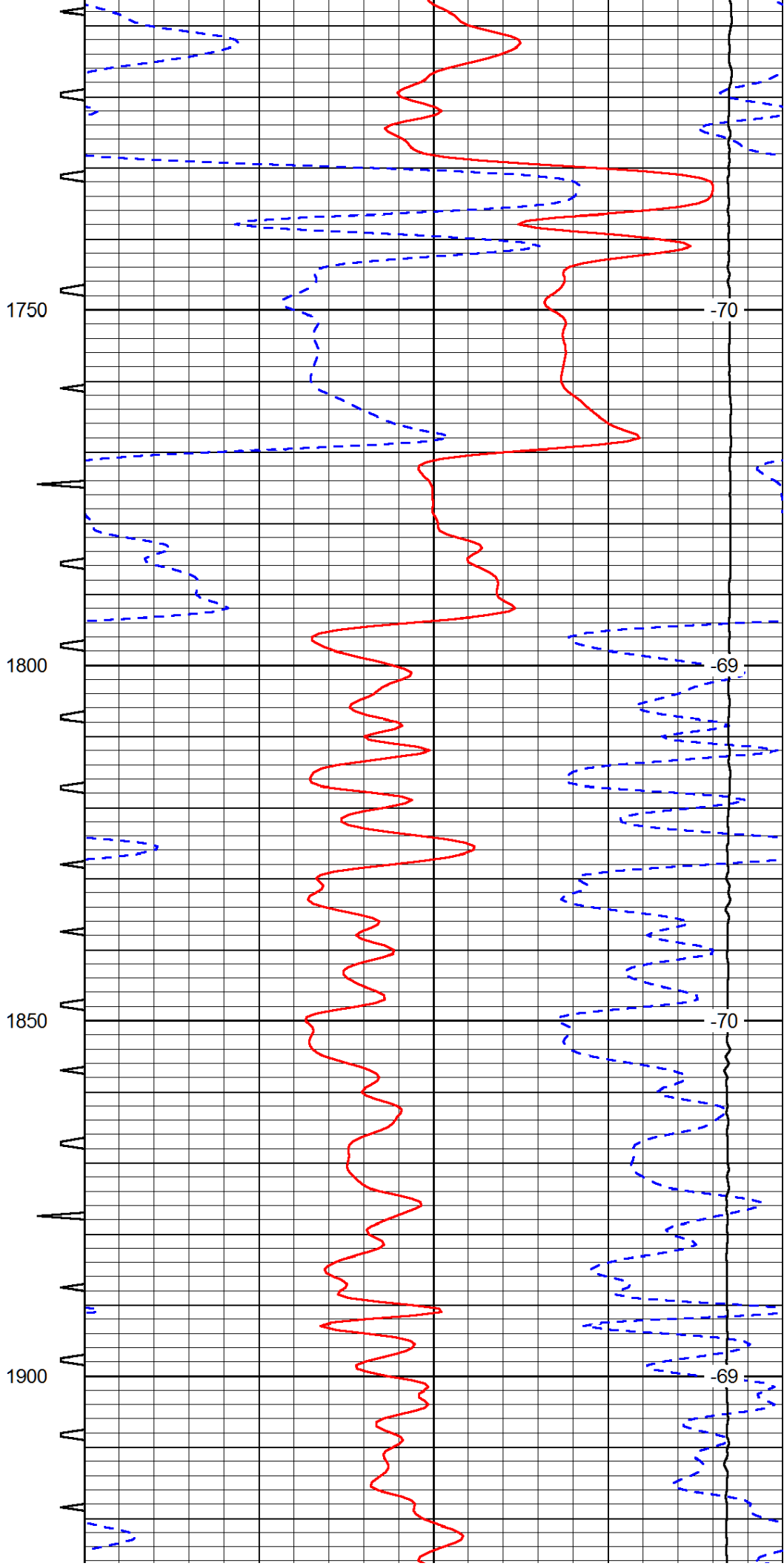
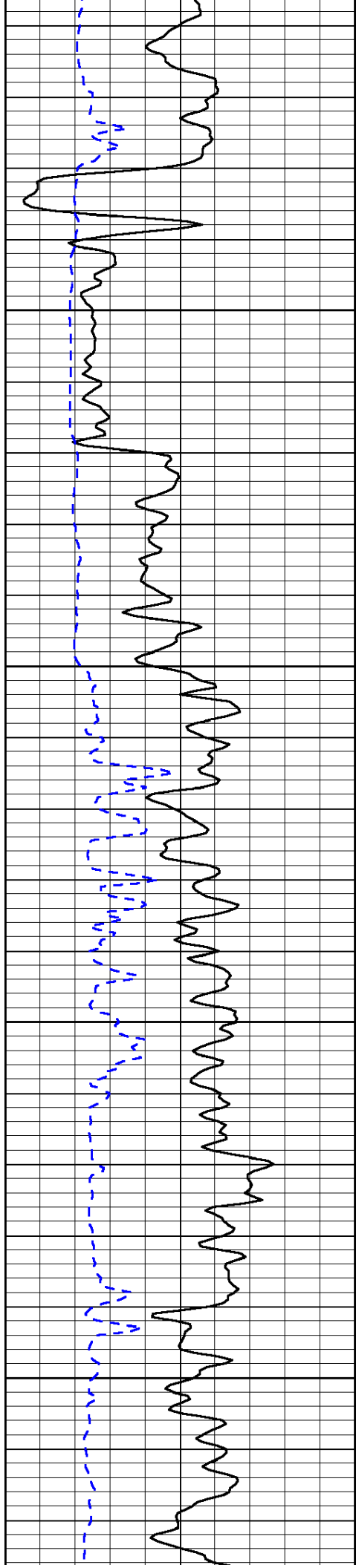


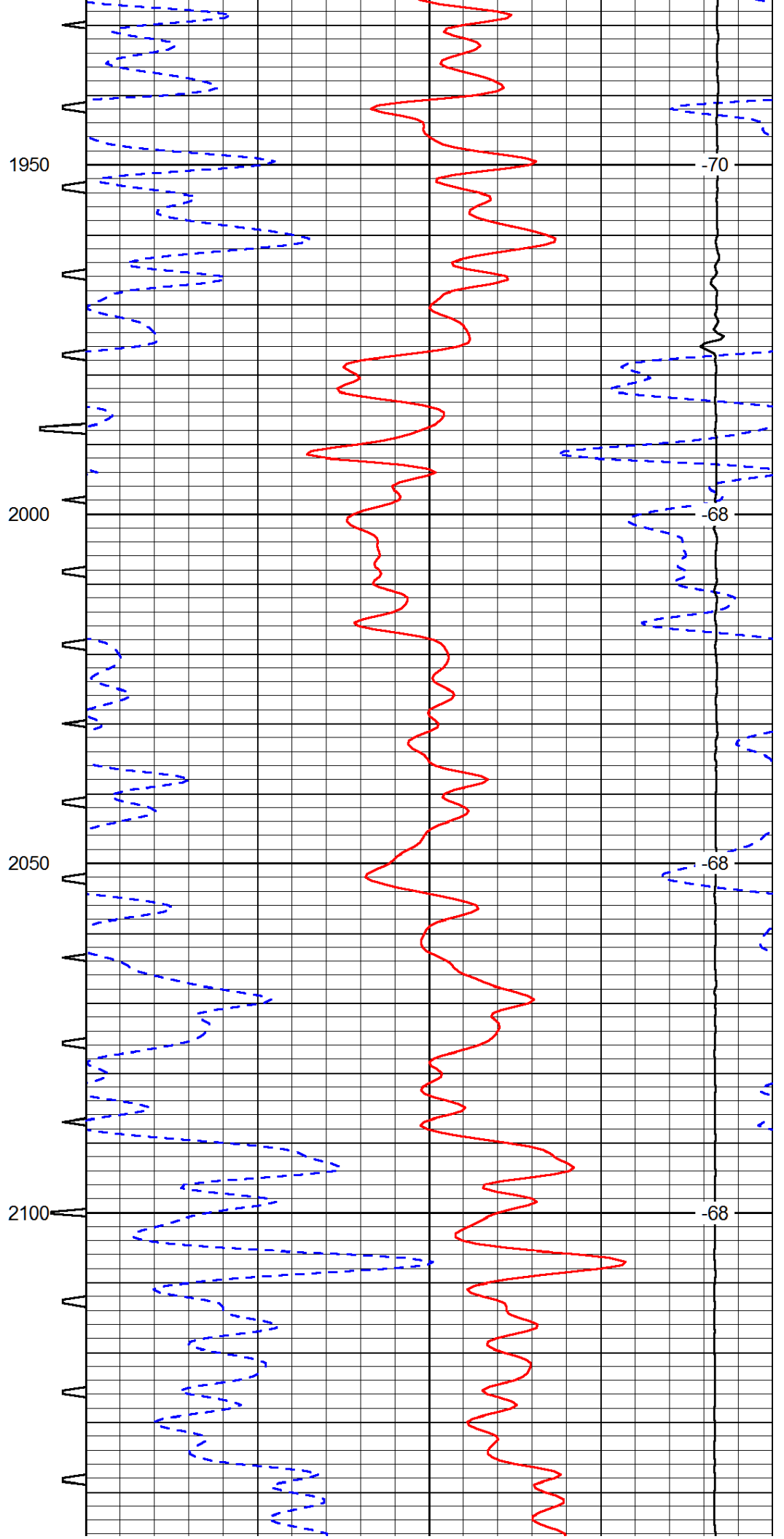
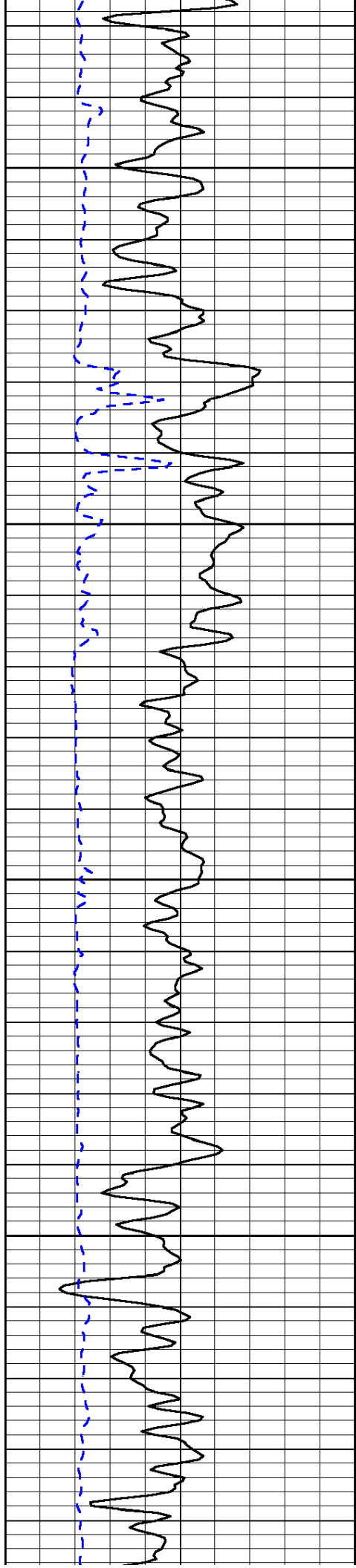


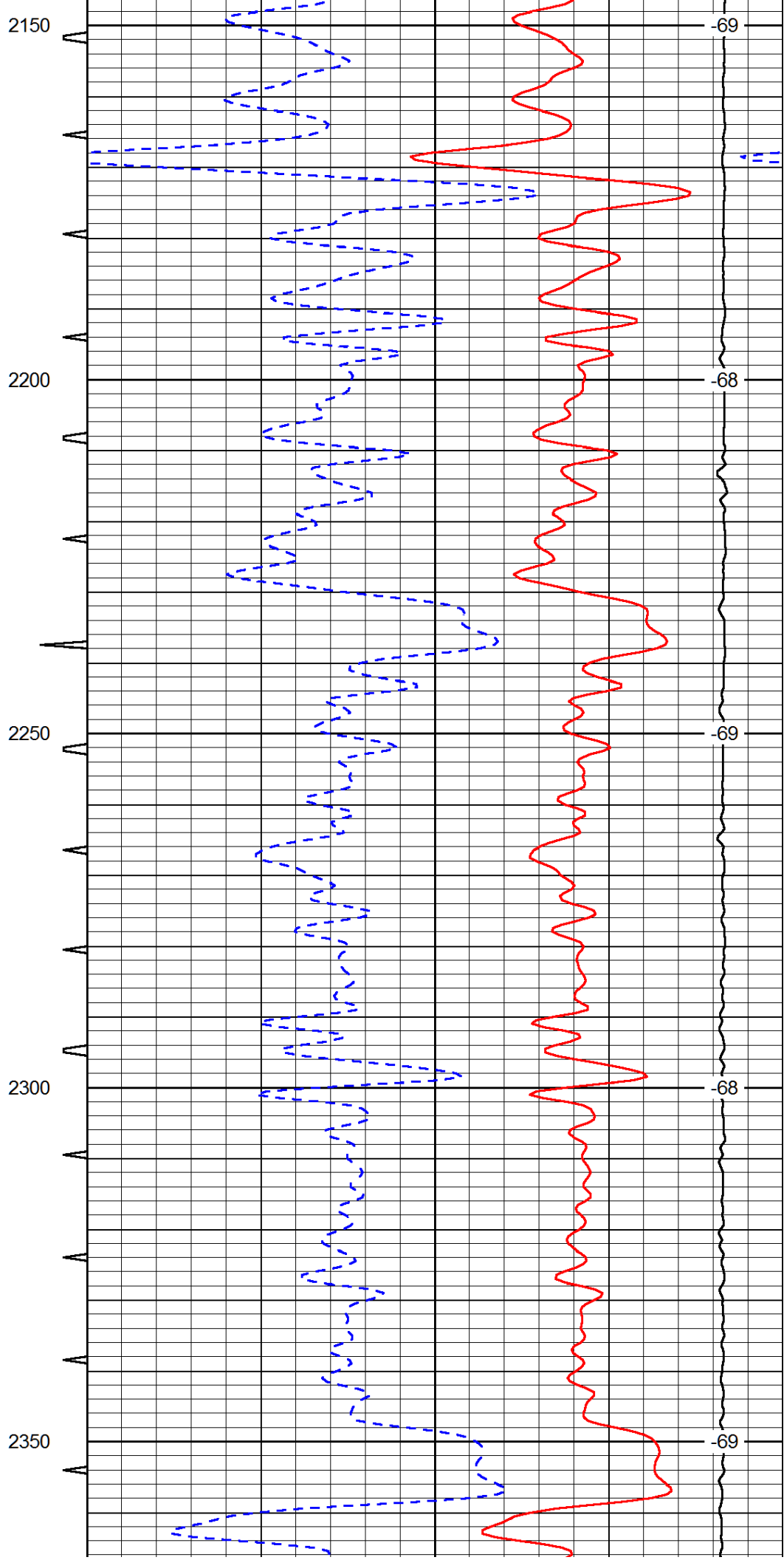
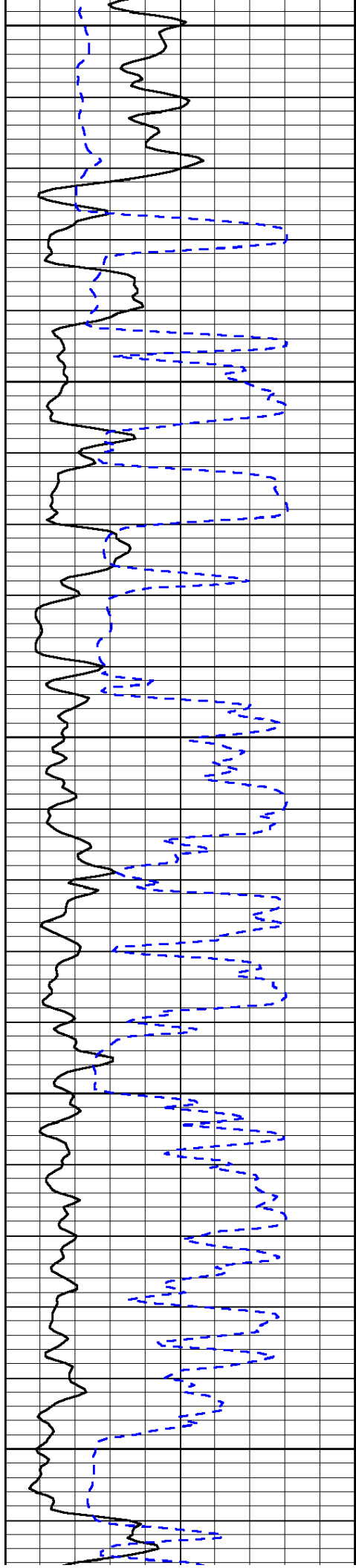


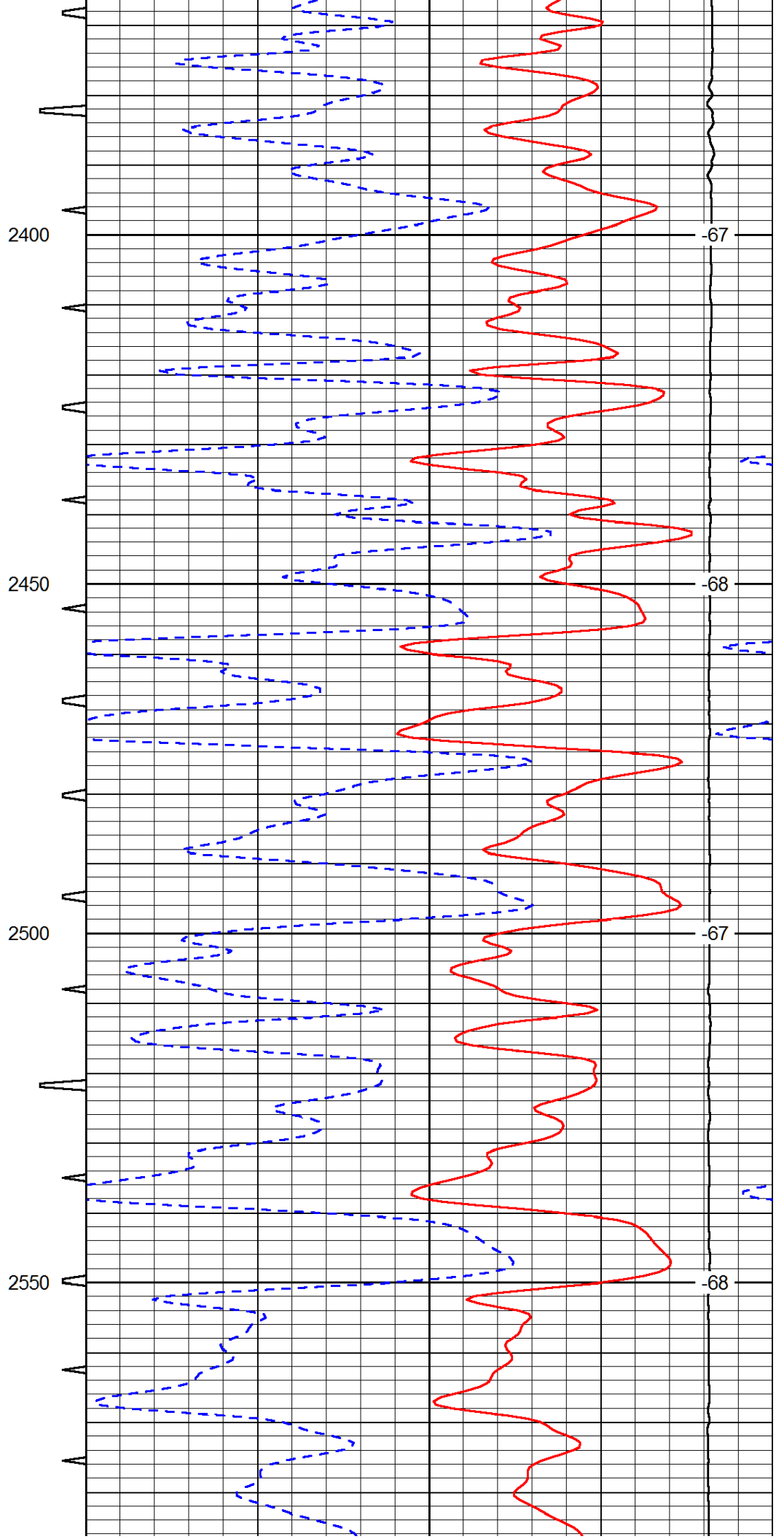
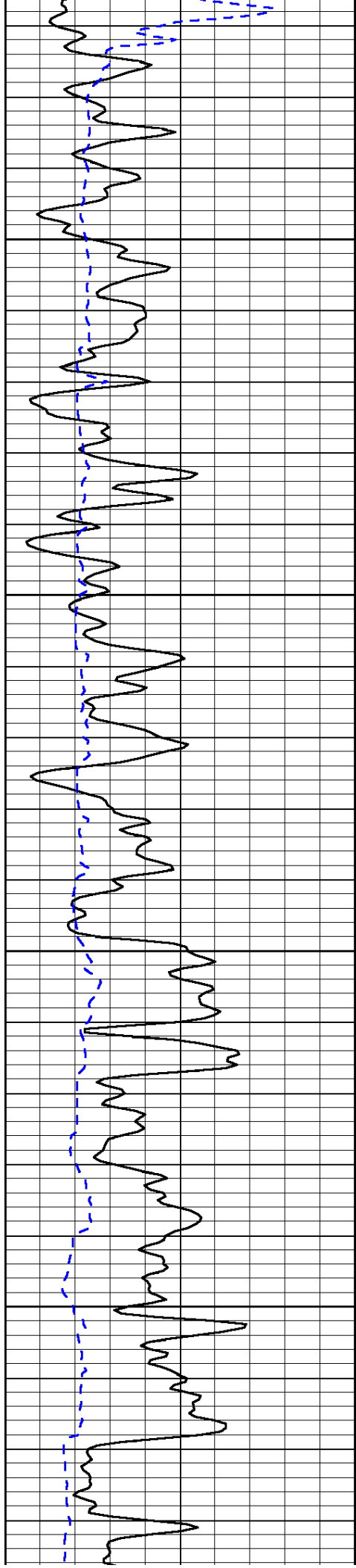


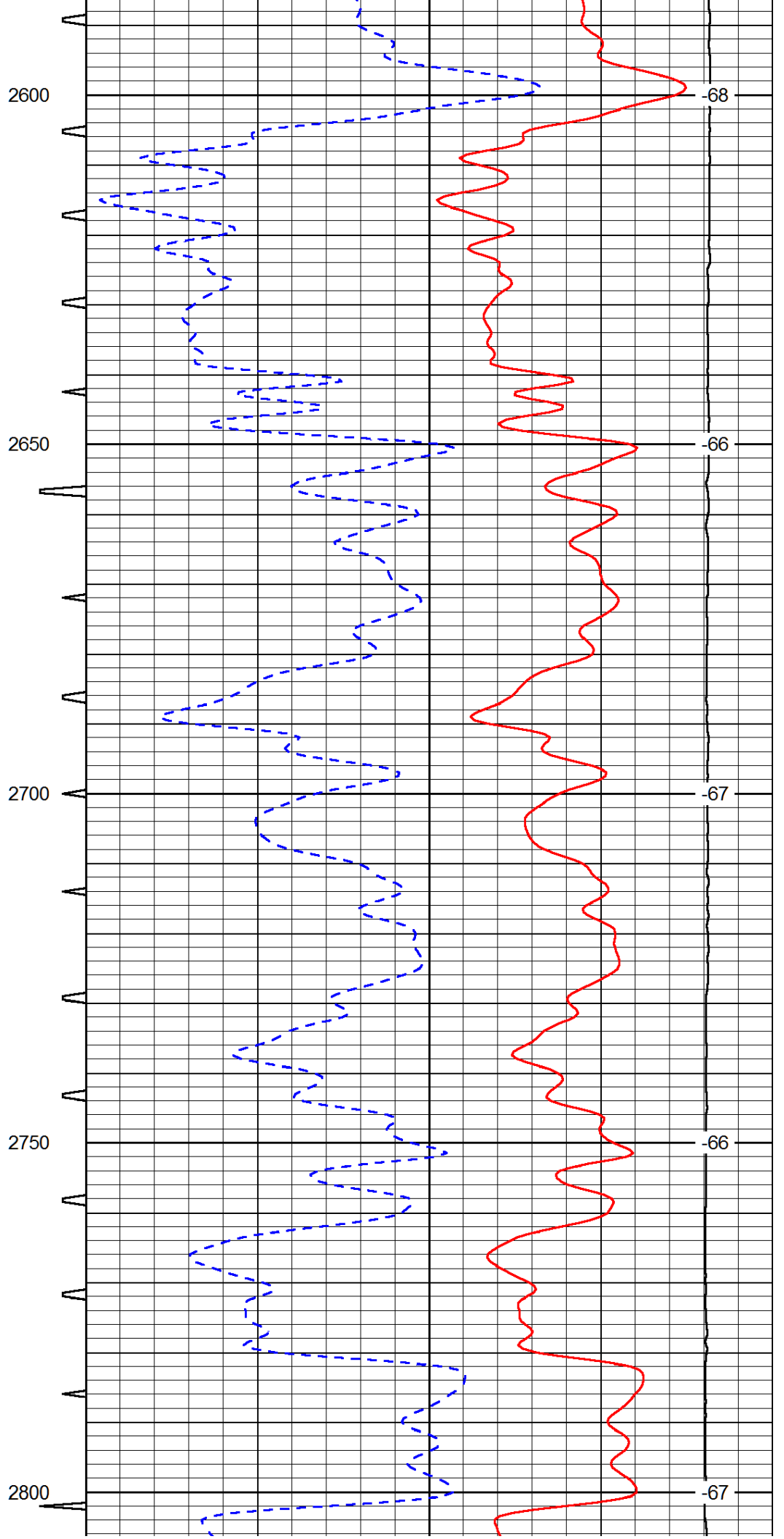
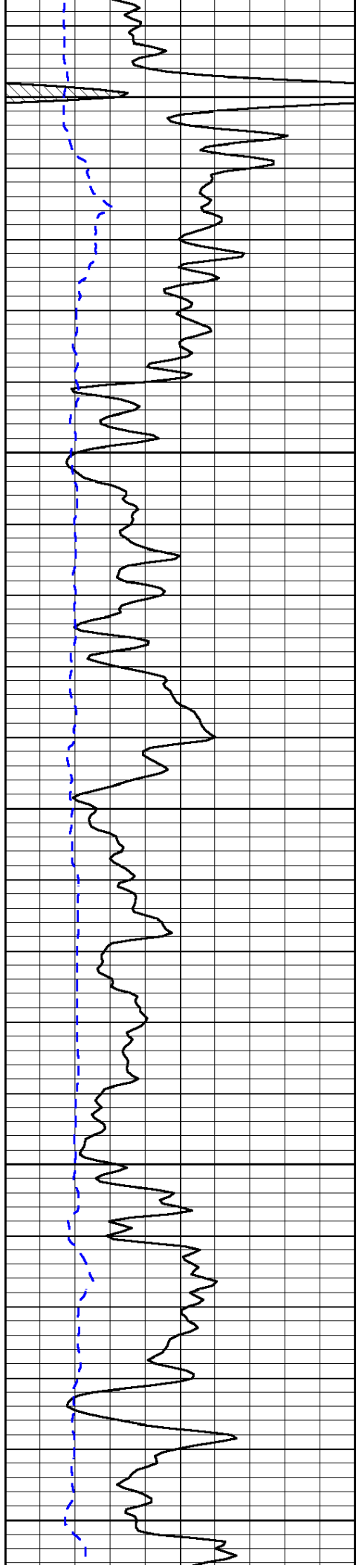


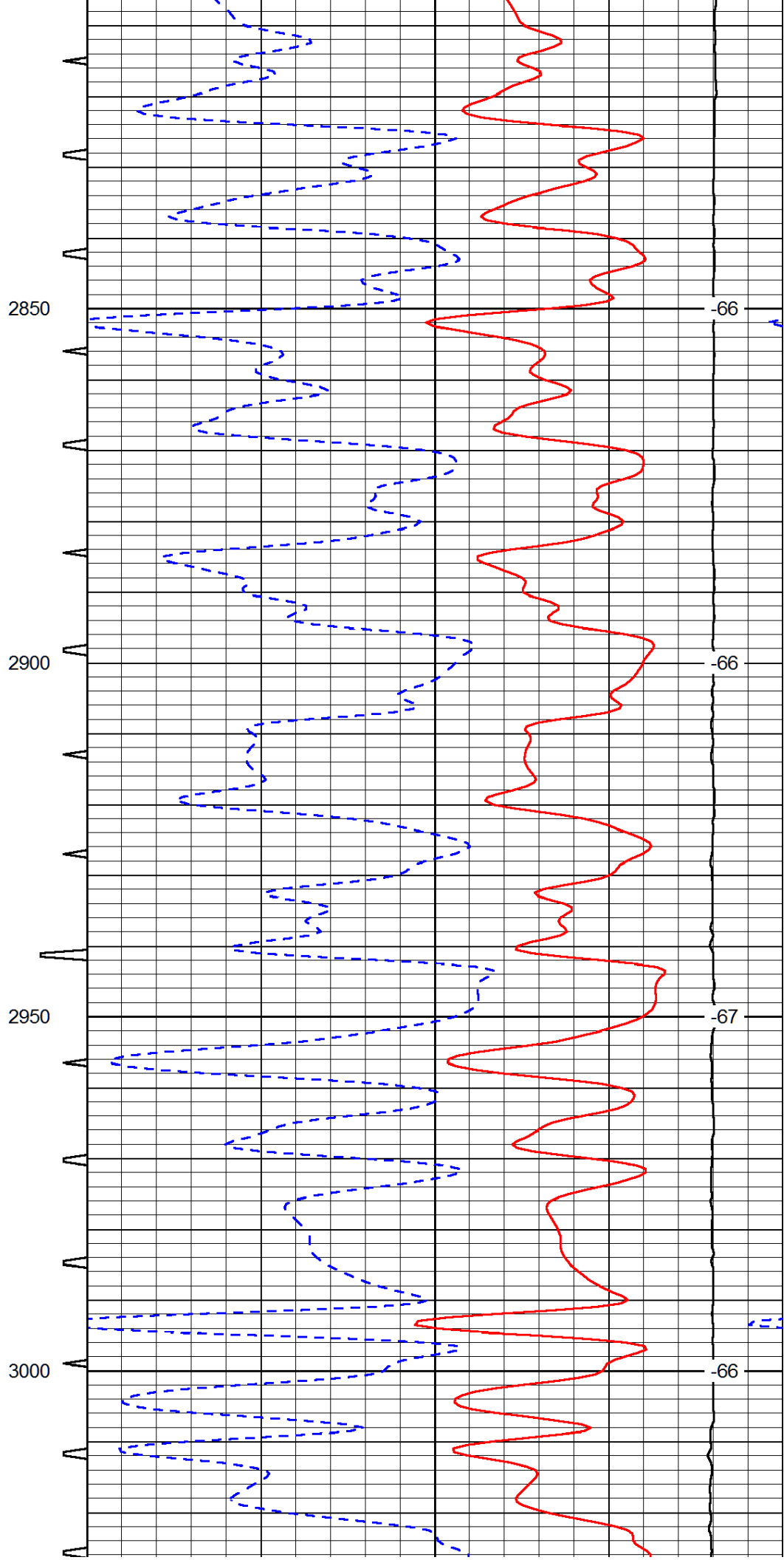
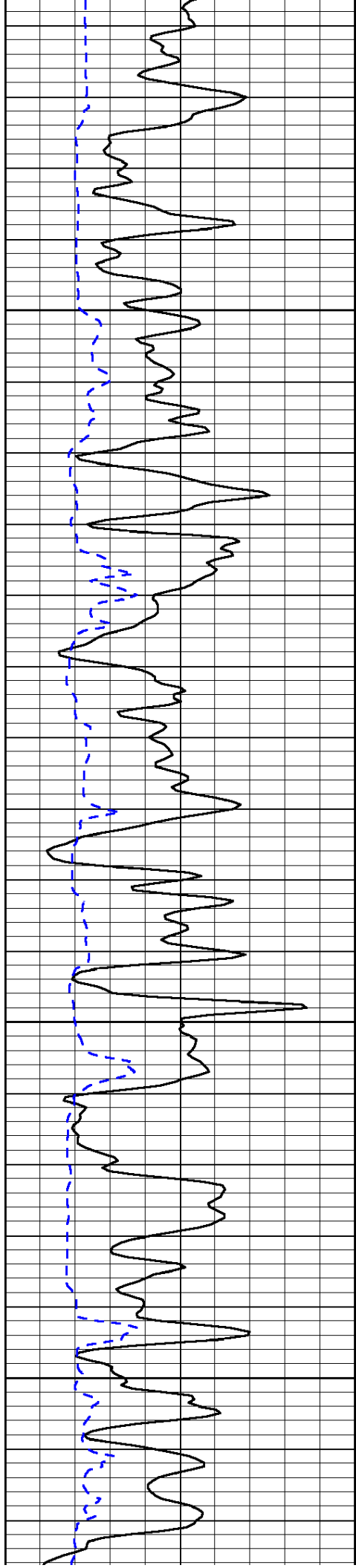


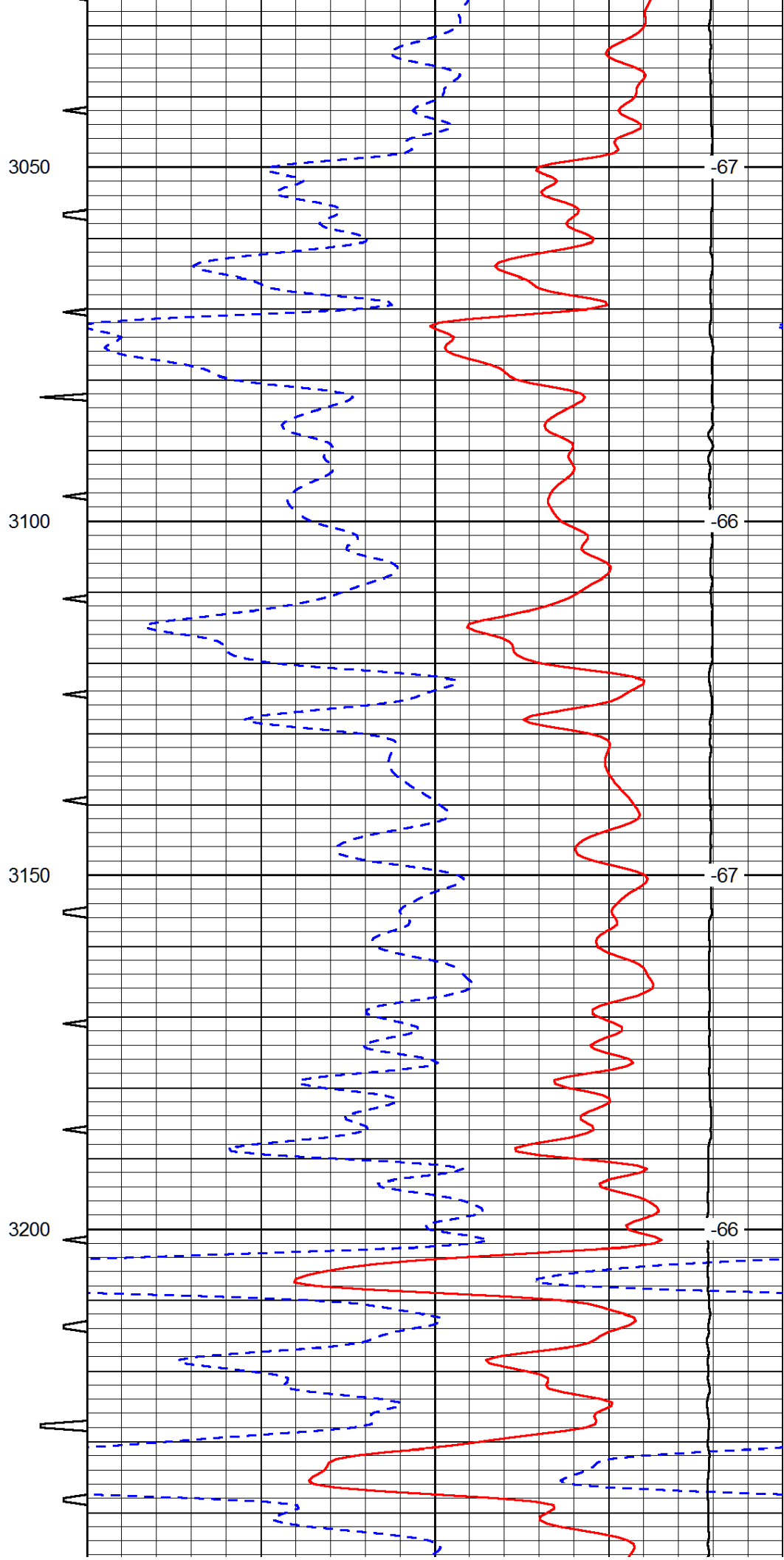
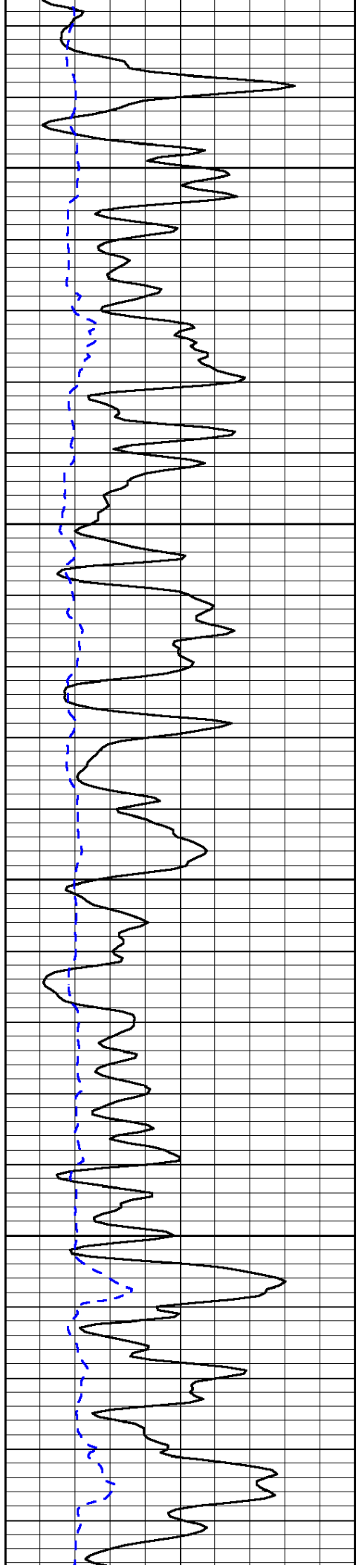


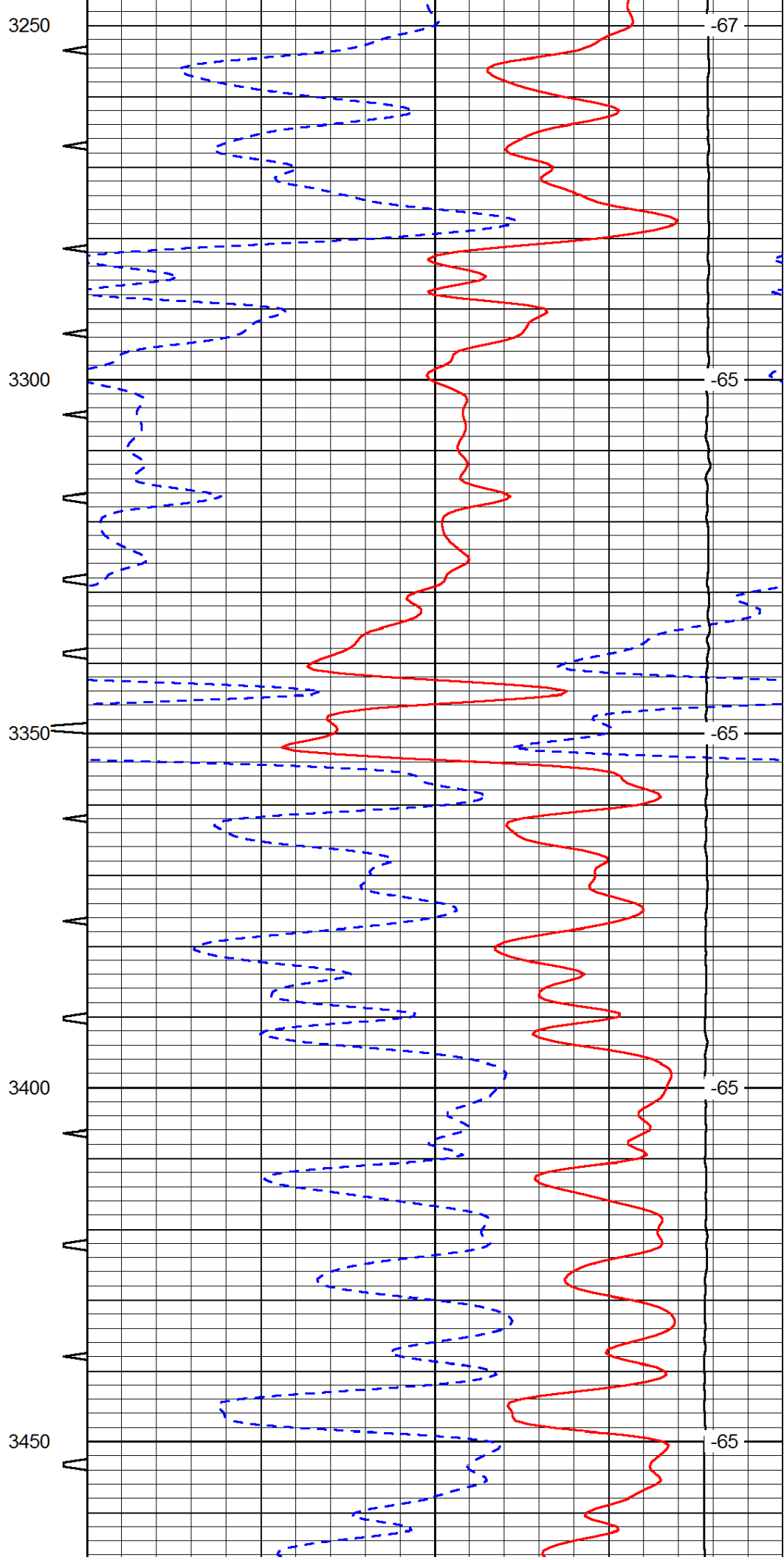
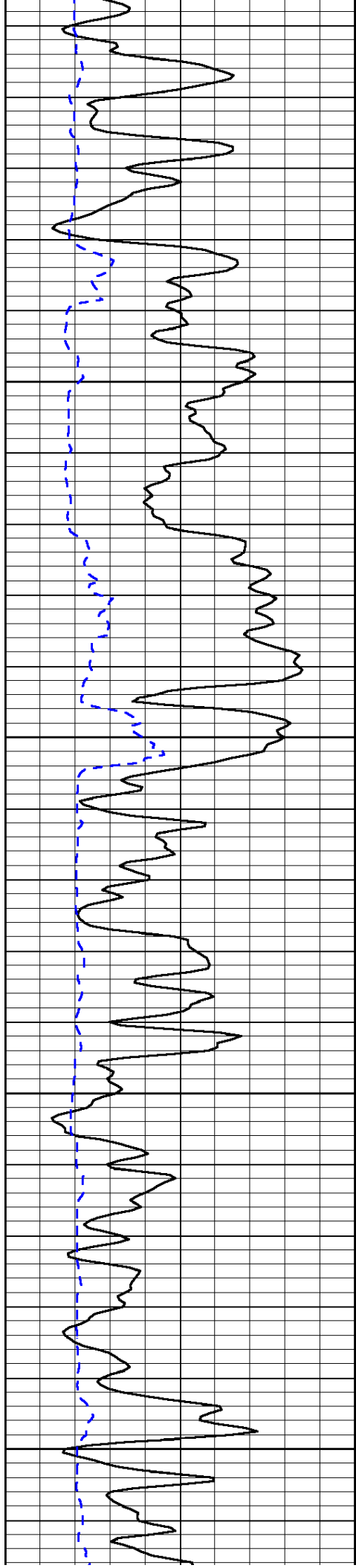




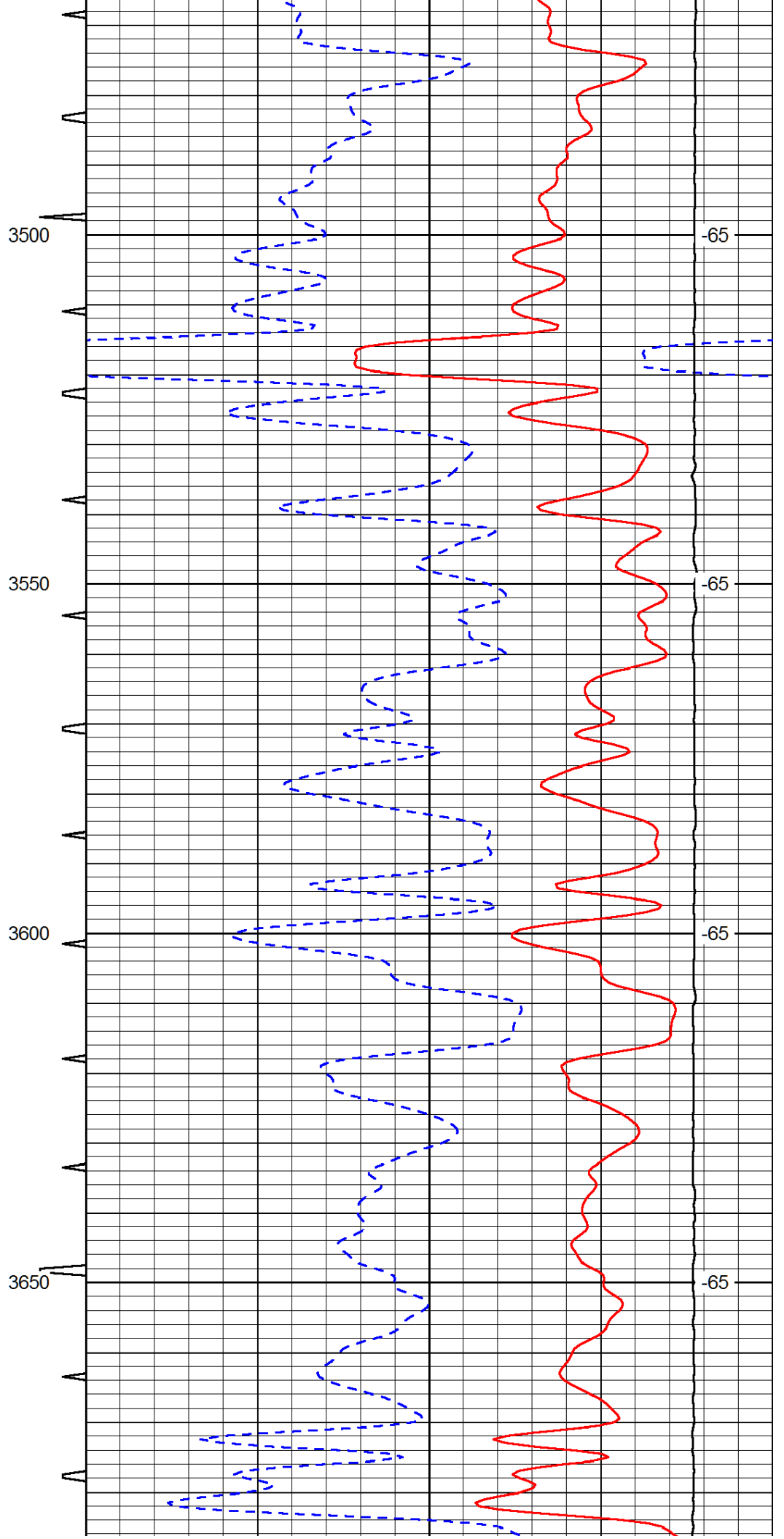
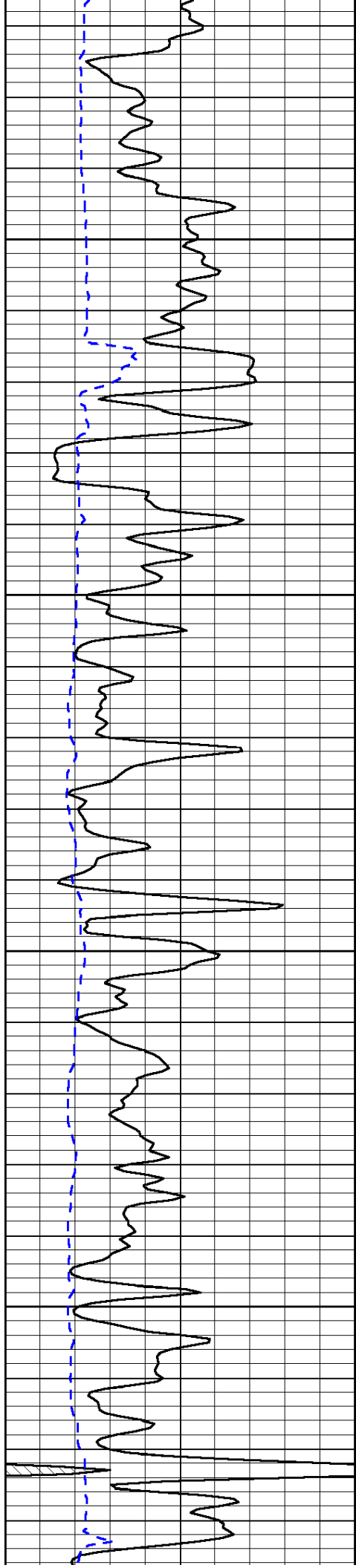


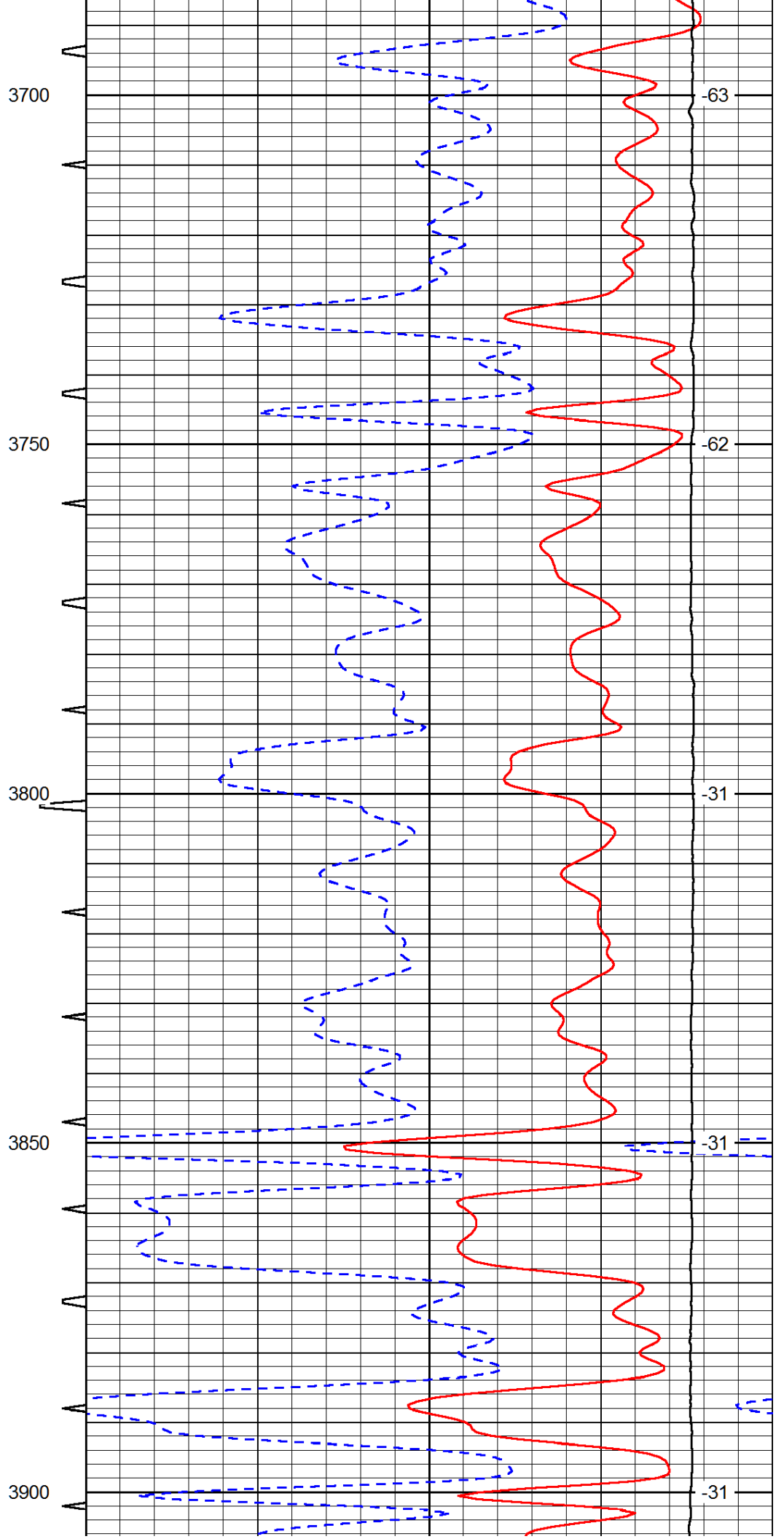
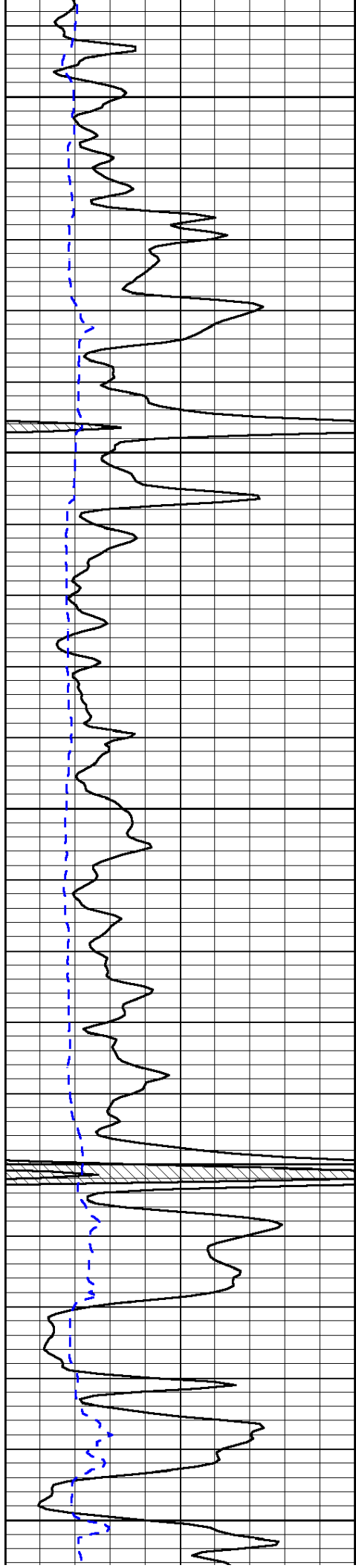


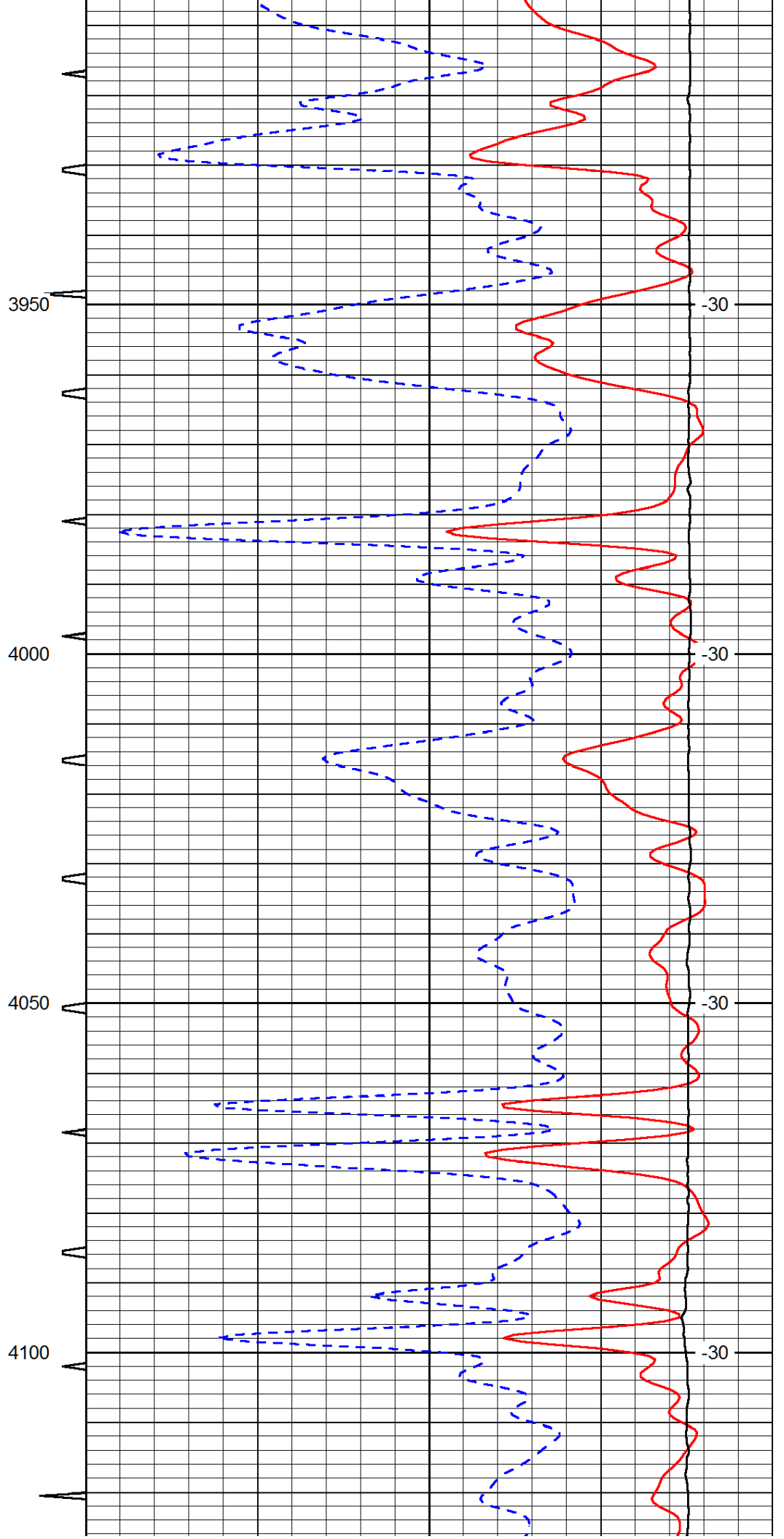
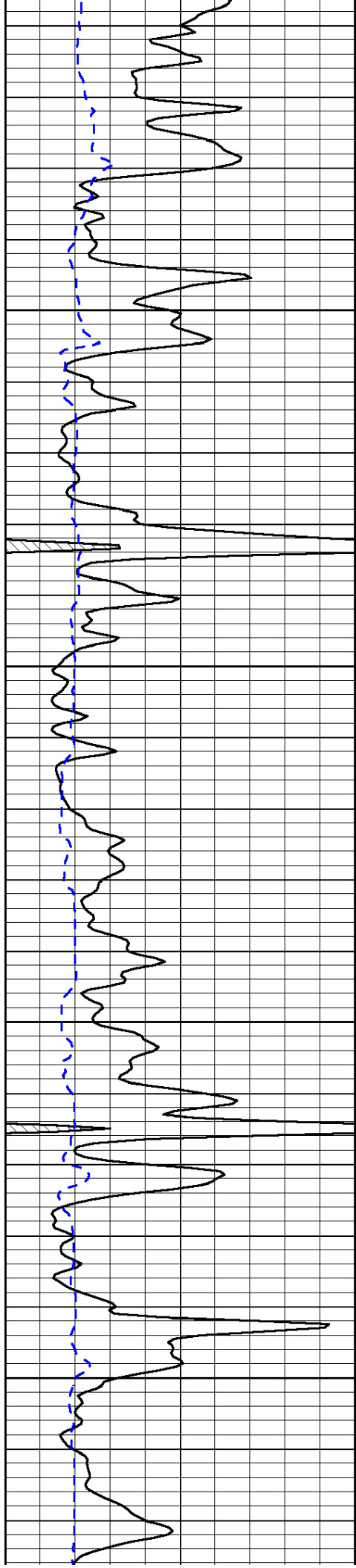


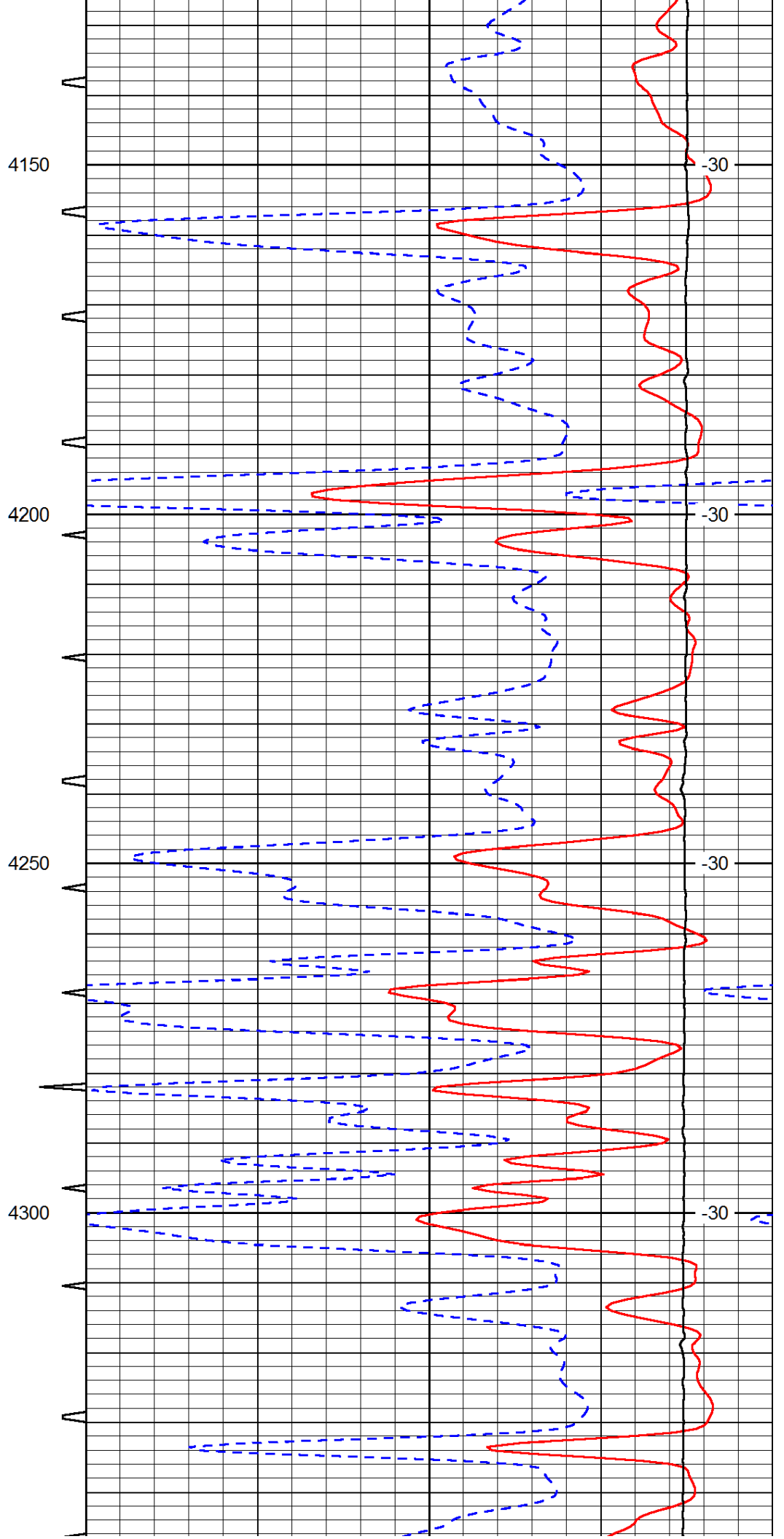
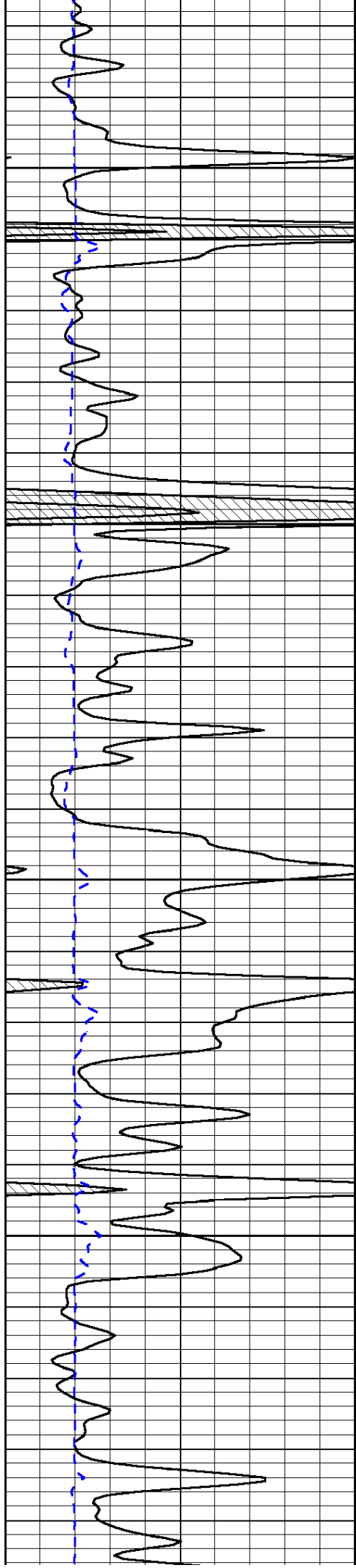


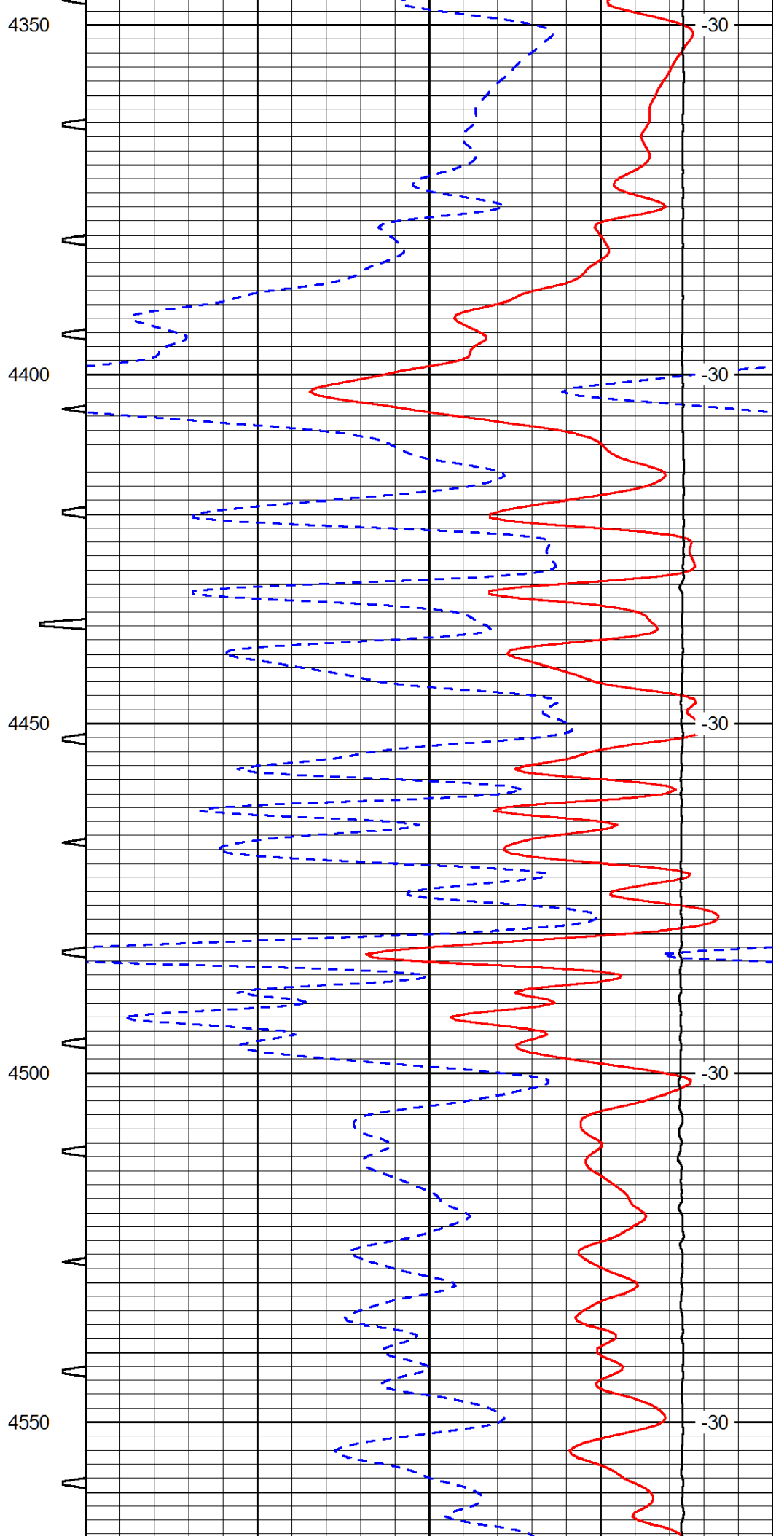
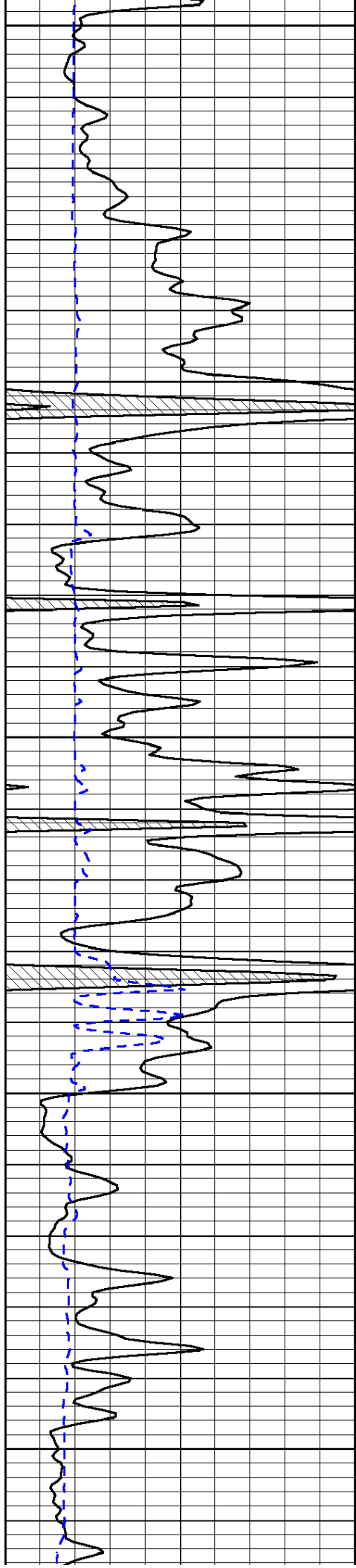


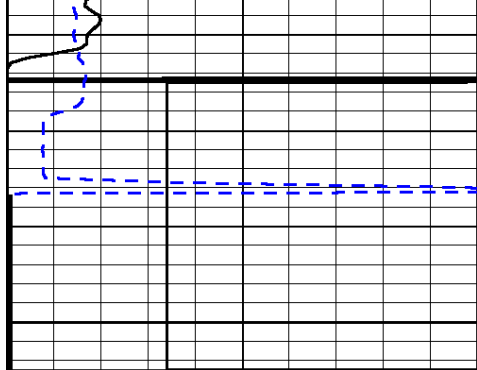




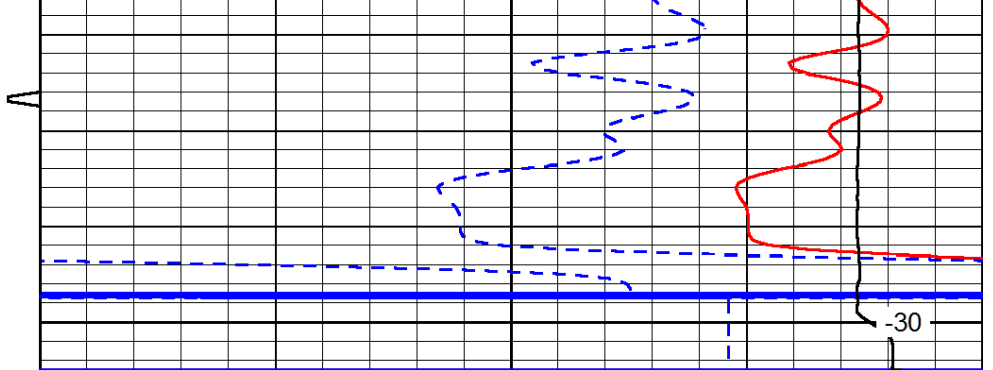








4600



0	Gamma Ray (GAPI)	150
150	Gamma Ray (GAPI)	300
6	dCAL (in)	16

Sonic Int	140	Delta Time (usec/ft) (usec/ft)	40
5 (msec) 0	30	Sonic Porosity (pu)	-10
	15000	LTEN (lb) (lb)	0

LSPD  
(ft/min)