



**GAMMA RAY
NEUTRON
COMPLETION LOG**

Company	JOHN A. ELMORE	Well	RANCH #214	Field	PERU-SEDAN	County	CHAUTAUQUA	State	KANSAS
Location:	1831' FSL & 3679' FEL SW 3/4 NE SW 11E		APR #:	15-019-27280-00-00		Other Services			
Permittent Datum	GL	Elevation	916 EST	Log Measured From	GL	K.B.	E.L.	916 EST	
Run Number	1 NW								
Date	1-24-13								
Depth Logger	1140.0'								
Top Log Interval	0								
Bottom Logged Interval	1140.0'								
Fluid Level	FULL								
Type Fluid	WATER								
Production Casing	2 7/8" @ TD								
Max. Recorded Temp.									
Estimated Cement Top									
Calculated Cement Top									
Amount & Type Cement									
Drilling Contractor									
Equipment Number	109								
Location									
Recorded By	SANBORN, G								
Witnessed By	ELMORE, J								

<<< Fold Here >>>

All interpretations are opinions based on inferences from electrical or other measurements and we cannot and do not guarantee the accuracy or correctness of any interpretation, and we shall not, except in the case of gross or willful negligence on our part, be liable or responsible for any loss, costs, damages, or expenses incurred or sustained by anyone resulting from any interpretation made by any of our officers, agents or employees. These interpretations are also subject to our general terms and conditions set out in our current Price Schedule.

Comments

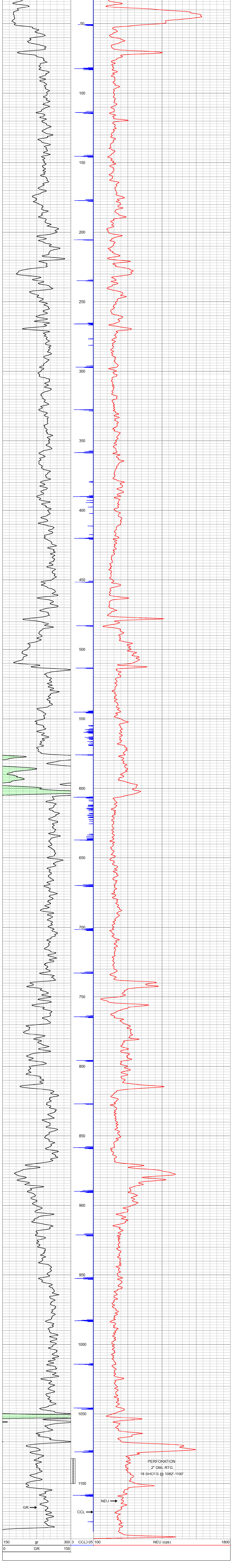
THANK YOU

Sensor	Offset (ft)	Schematic	Description	Len (ft)	OD (in)	Wt (lb)
GR	7.59		GR-TITAN 169 (TIT169_001) Titan 1 11/16" Gamma Ray	4.75	1.69	20.00
CCL	5.05		CCL-TITAN 169 (TIT169) Titan 1 11/16" Logging CCL	1.83	1.69	7.50
NEU	0.63		NEU-TITAN (TIT801) TITAN 1 11/16" Neutron	4.33	1.69	25.00

Dataset: ranch #214.db; field/well/run1/pass1
Total Length: 10.92 ft
Total Weight: 52.50 lb
O.D. 1.69 in

Database File: e:\ranch #214.db
Dataset Pathname: pass1
Presentation Format: gr-n-ccl
Dataset Creation: Thu Jan 24 11:49:59 2013 by Log Std Casedhole 09061
Charted by: Depth in Feet scaled 1:240

150	gr	300	3	CCL.05	100	NEU (cps)	1800
0	GR	150					



150	gr	300	3	CCL.05	100	NEU (cps)	1800
0	GR	150					