



**Sonic Cement
Bond Log**

Pioneer Energy Services

API No.

15-135-25539-00-00

Company **American Warrior, Inc.**
Well **Uehling Unit No. 1-18**
Field **Unknown**
County **Ness** State **Kansas**

Location

1794' FNL 2433' FEL

Other Services
PERF @

Sec: 18 Twp: 20 S Rge: 25 W

Elevation

Permanent Datum Ground level Elevation 2486
Log Measured From Kelly Bushing 1' Ft. Above Perm. Datum
Drilling Measured From Kelly Bushing

K.B. 2497
D.F. 2498
G.L. 2486

Run Number	One	
Date Survey	3/11/2013	
Date Cementing	3/01/2013	
Type Cementing Operation	Primary	
Depth Driller	4600	
Depth Logger	4550	
Logged Interval	4549 to 3200	to
Casing Driller	5.5" @ T.D.	@
Float Collar -- D.V. Tool	1689	////
Squeeze Depth	////	
Amount & Type Cement	////	
Amount & Type Admix	////	
Type Fluid In Hole	Water	
Fluid Level	Full	
Salinity PPM CL	////	
Weight lb/gal -- Vis.	////	////
Approx. Logged Cement Top	3385	
Calculated Cement Top	////	
Max. Hole Temperature	122	
Tool No.	RBT 4-4	
Spacing Recorded	3-5	
Equipment -- Location	14	Hays
Recorded By	A Drelling	
Witnessed By	Mr Joe Smith	

<<< Fold Here >>>

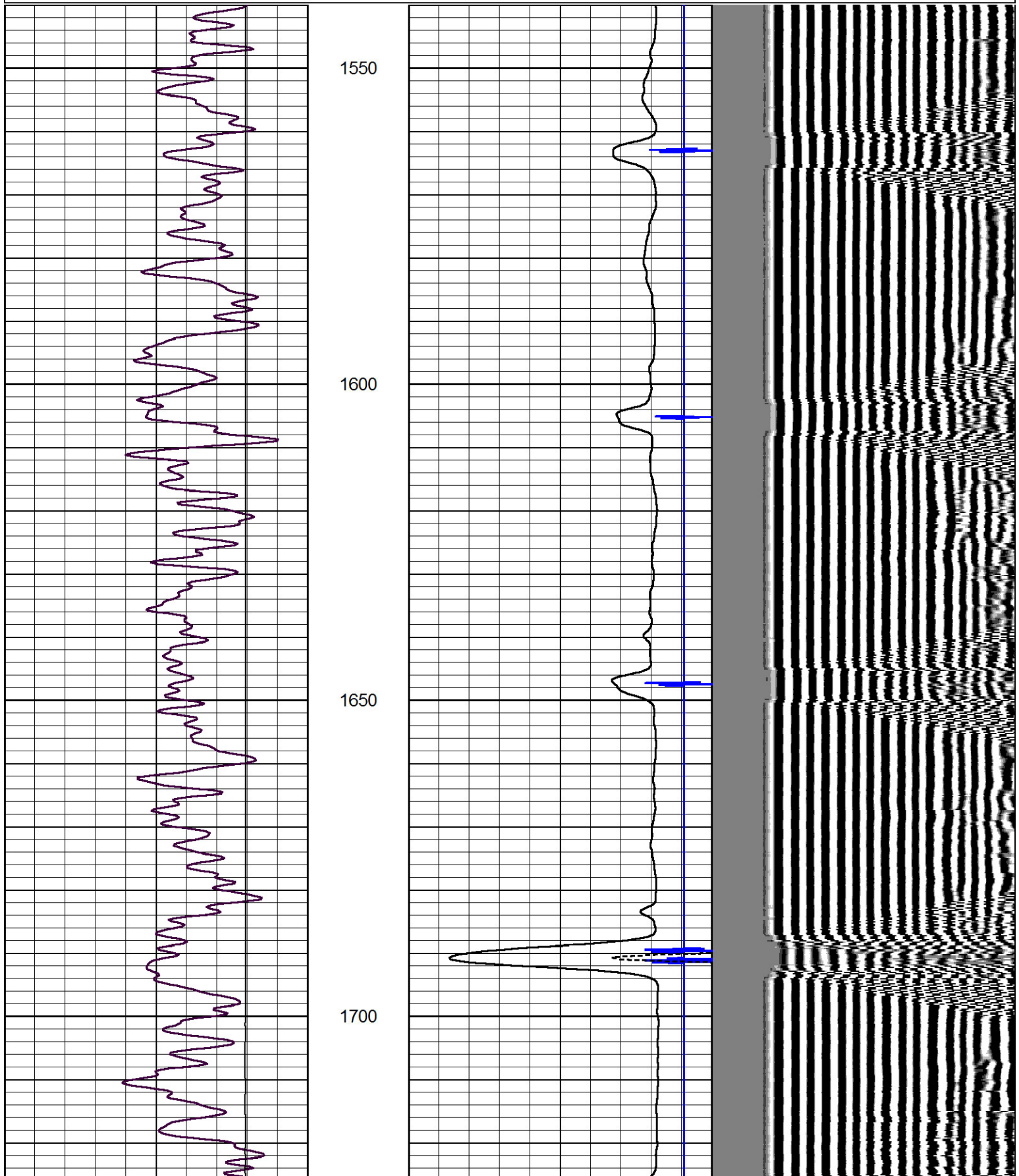
All interpretations are opinions based on inferences from electrical or other measurements and we cannot and do not guarantee the accuracy or correctness of any interpretation, and we shall not, except in the case of gross or willful negligence on our part, be liable or responsible for any loss, costs, damages, or expenses incurred or sustained by anyone resulting from any interpretation made by any of our officers, agents or employees. These interpretations are also subject to our general terms and conditions set out in our current Price Schedule.

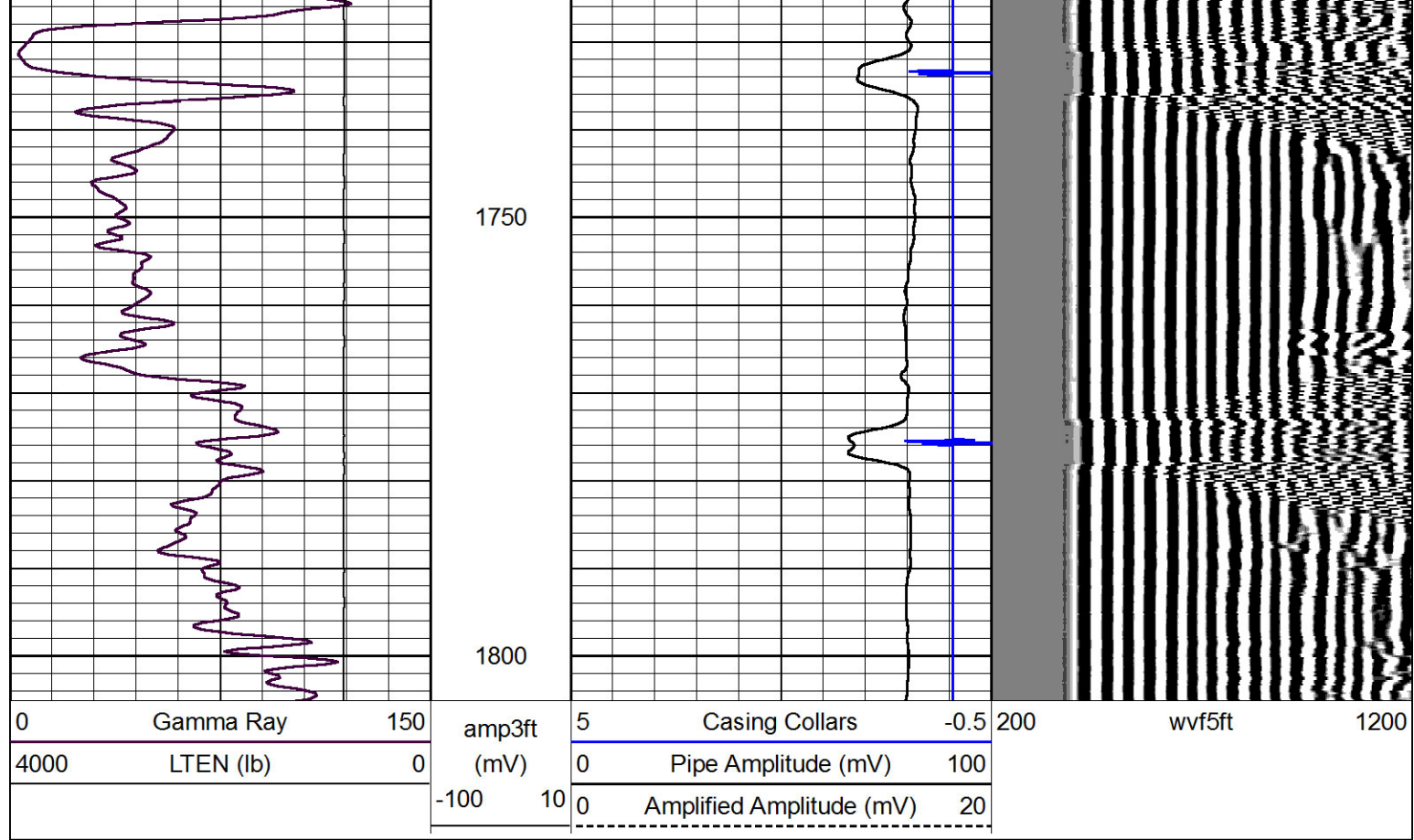
Comments

Thank you for using Pioneer Energy Services
785.625.3858
Ness City Ks.
6 S to 60 Rd.,
12 W to G, 2 S ,
1/2 W, S into

Database File: warrior_uehling_1-18.db
 Dataset Pathname: grcbl/pass7
 Presentation Format: cbldr
 Dataset Creation: Mon Mar 11 09:51:38 2013 by Log 7.0 B1
 Charted by: Depth in Feet scaled 1:240

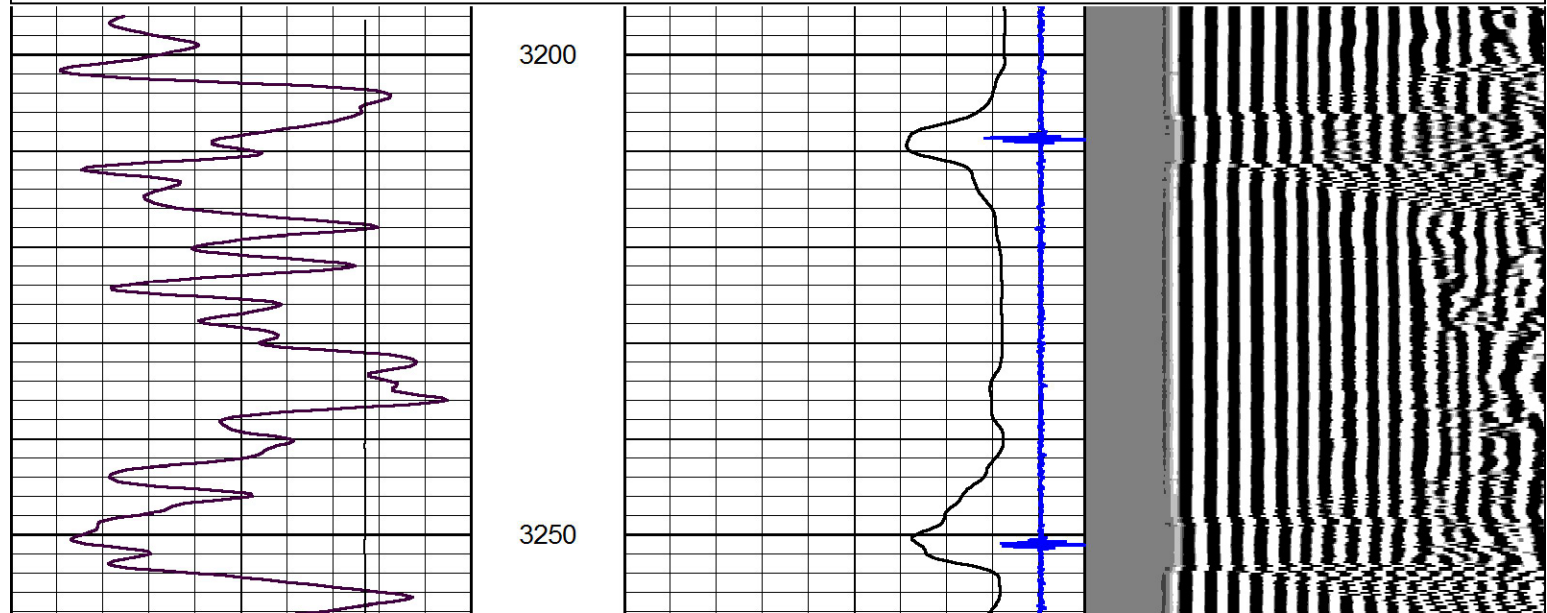
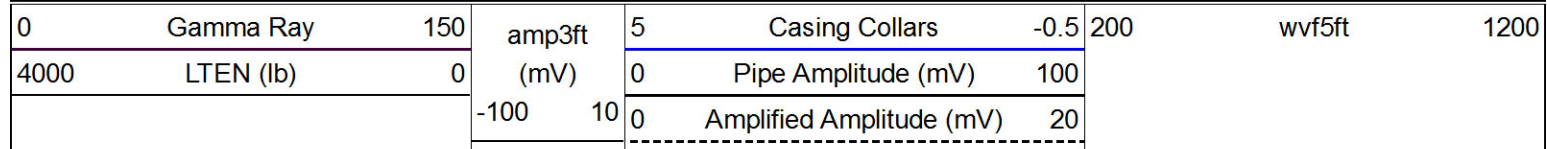
0	Gamma Ray	150	amp3ft	5	Casing Collars	-0.5	200	wvf5ft	1200
4000	LTEN (lb)	0	(mV)	0	Pipe Amplitude (mV)	100			
			-100 10	0	Amplified Amplitude (mV)	20			

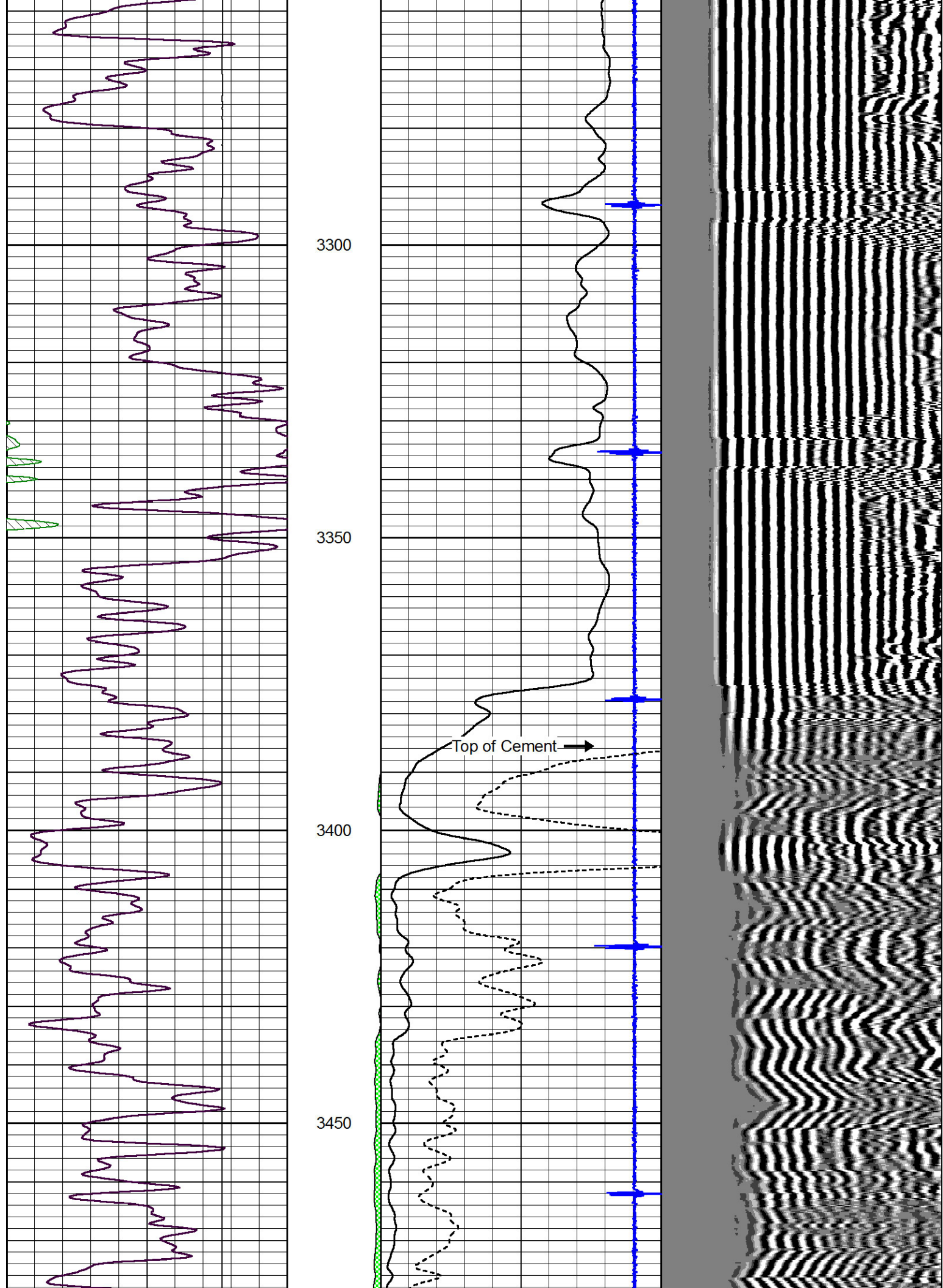


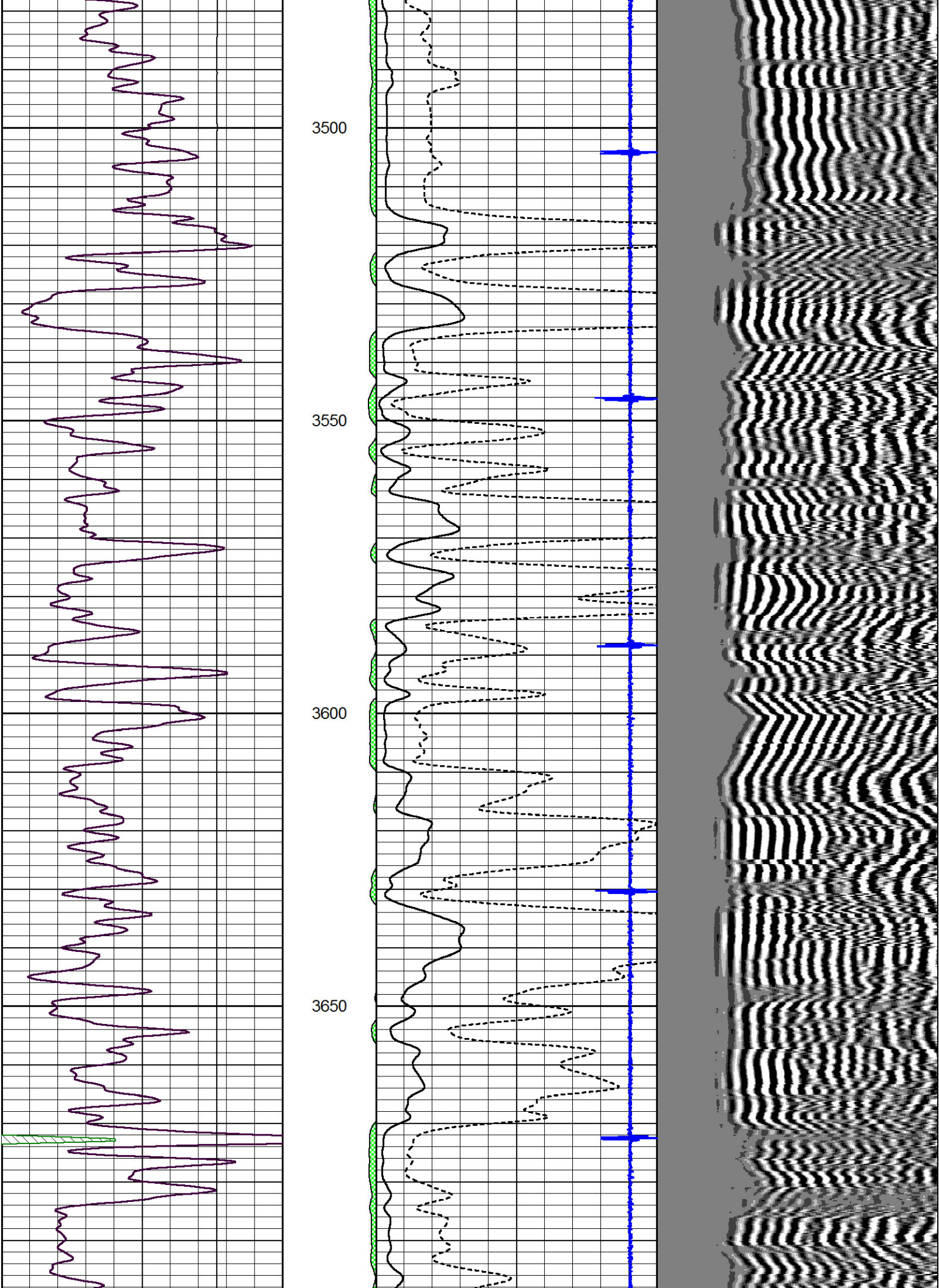


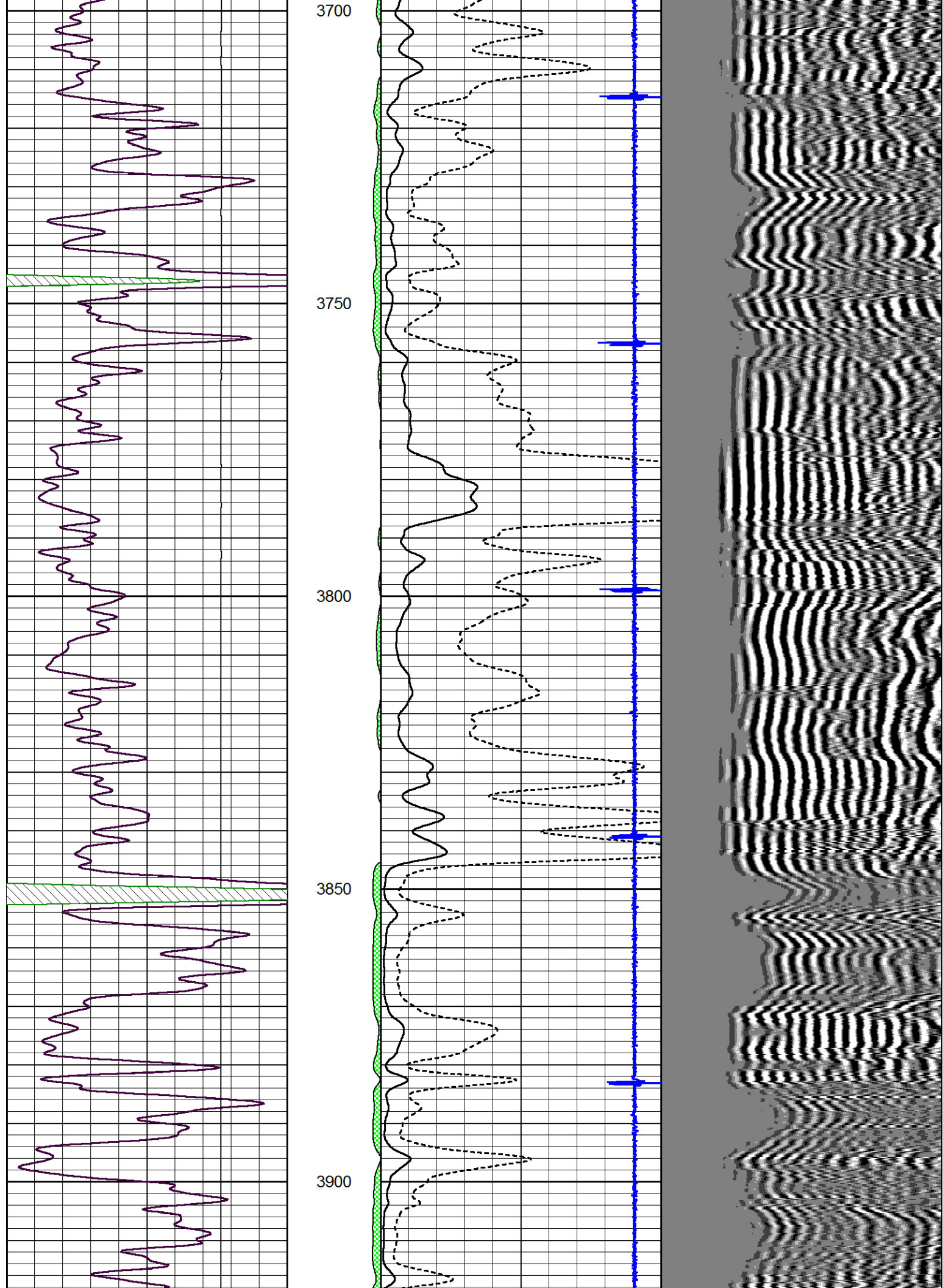
Main Pass

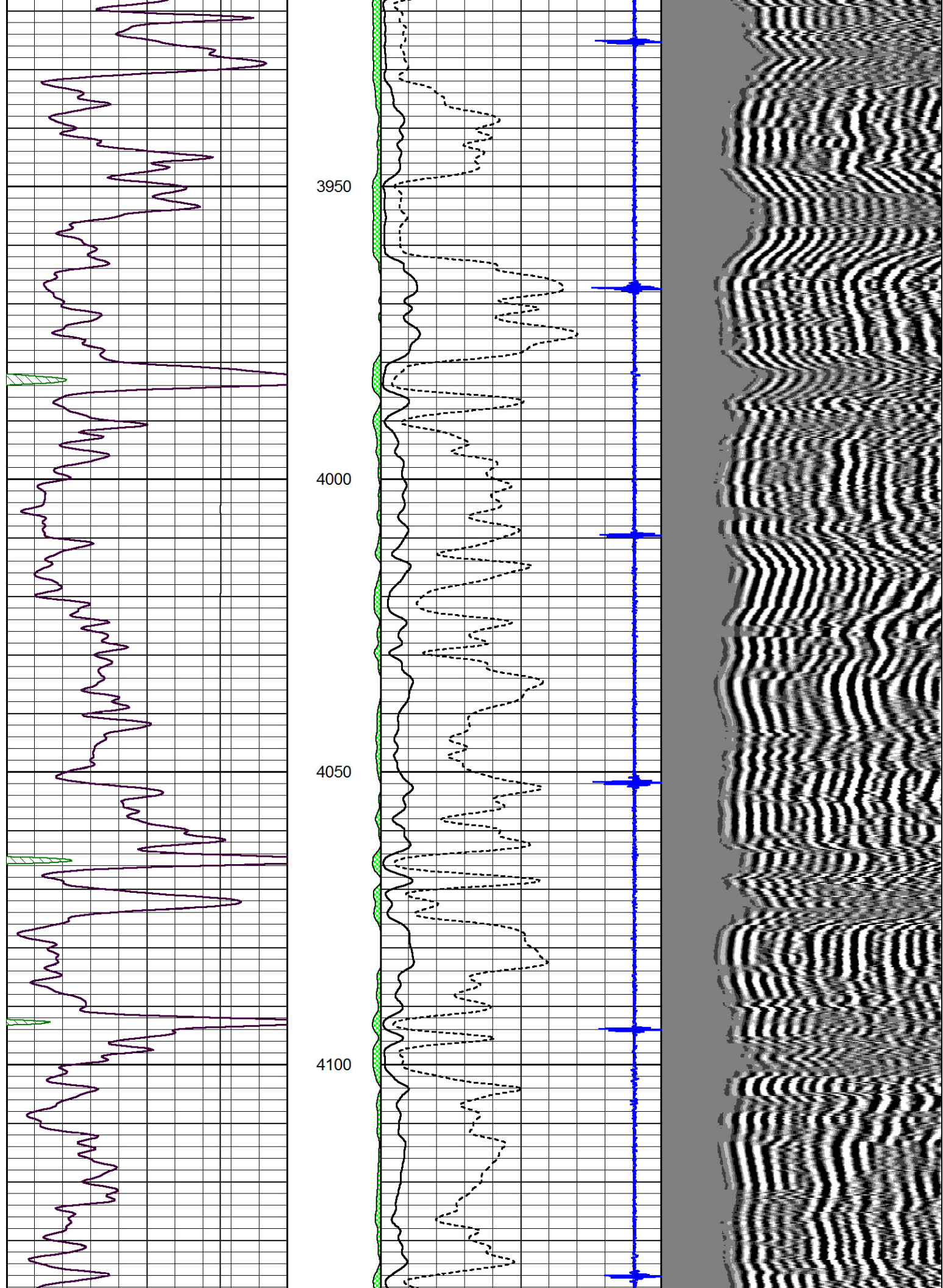
Database File: warrior_uehling_1-18.db
 Dataset Pathname: grcbl/pass6.1
 Presentation Format: cbldr
 Dataset Creation: Mon Mar 11 09:52:26 2013 by Calc 7.0 B1
 Charted by: Depth in Feet scaled 1:240

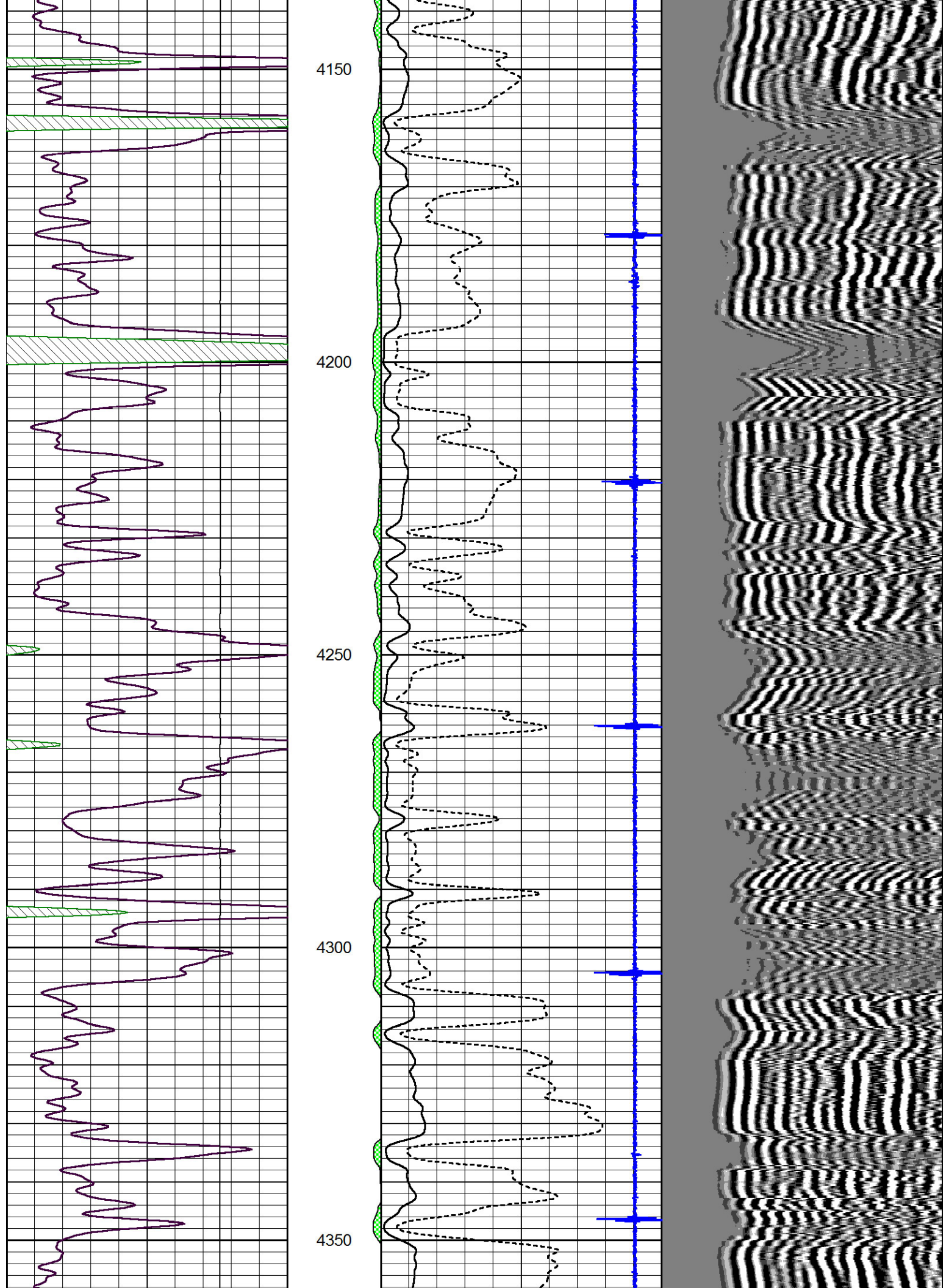










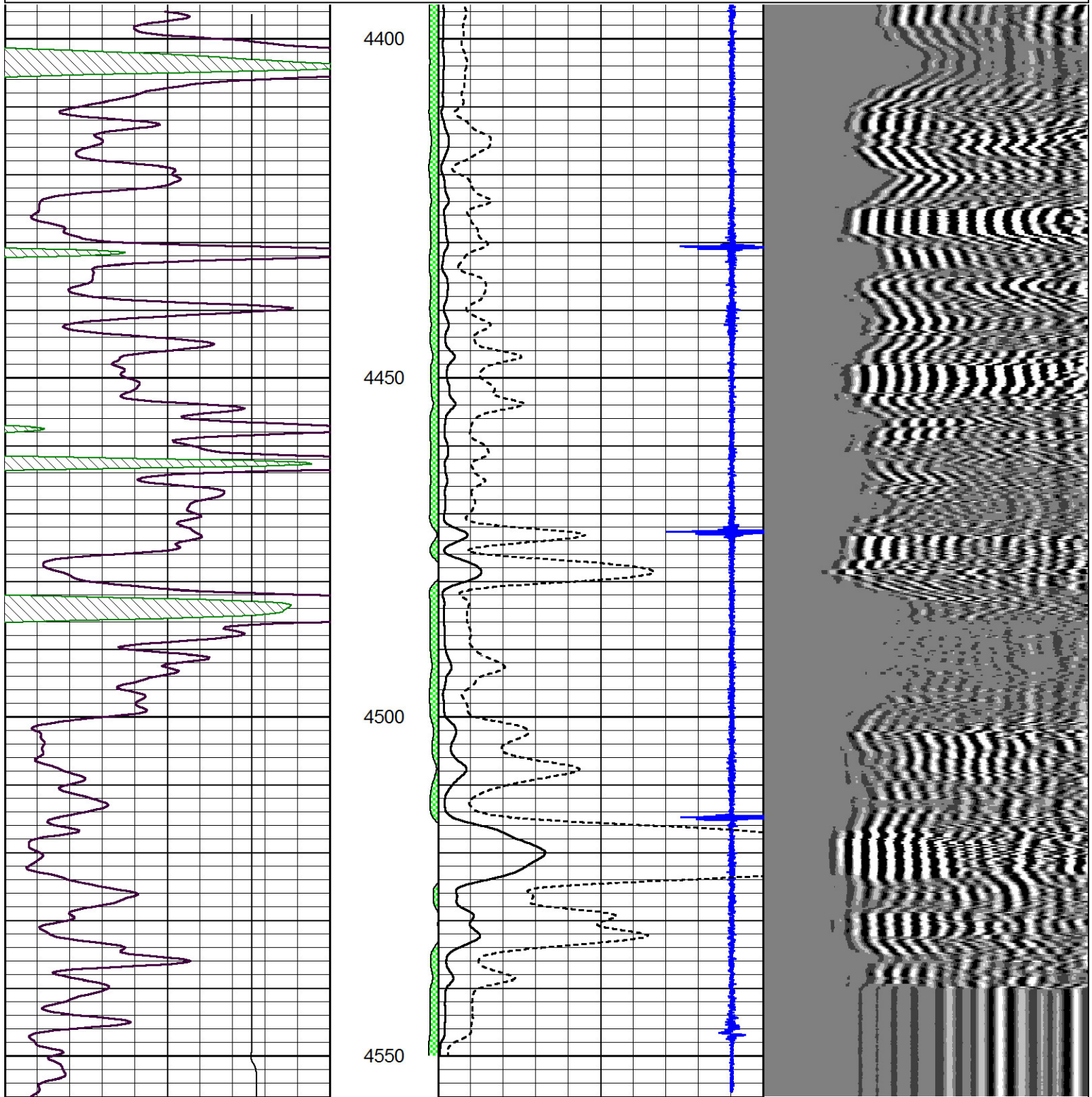




Repeat Section

Database File: warrior_uehling_1-18.db
 Dataset Pathname: grcbl/pass5.1
 Presentation Format: cbldr
 Dataset Creation: Mon Mar 11 09:28:31 2013 by Calc 7.0 B1
 Charted by: Depth in Feet scaled 1:240

0	Gamma Ray	150	amp3ft	3	Casing Collars	-0.3	200	wvf5ft	1200
4000	LTEN (lb)	0	(mV)	0	Pipe Amplitude (mV)	100			
			-100 10	0	Amplified Amplitude (mV)	20			



0	Gamma Ray	150	amp3ft	3	Casing Collars	-0.3	200	wvf5ft	1200
4000	LTEN (lb)	0	(mV)	0	Pipe Amplitude (mV)	100			
			-100 10	0	Amplified Amplitude (mV)	20			