



DIGITAL LOG (785) 625-3858

Microresistivity Log

15-009-25,729-00-00

API No.

Company F.G. Holl Company, LLC

Well Penner Trust Unit No. 1-15

Field

County Barton State Kansas

Location 80' N, 3' W of C E/2 E/2 E/2  
2,560' FNL & 333' FEL

Sec: 15 Twp: 20S Rge: 15W

Other Services  
CNL/CDL  
DIL/BHCS

Elevation

K.B. 1984

D.F. 1976

G.L. 1976

Permanent Datum Ground Level Elevation 1976

Log Measured From Kelly Bushing 8 Ft. Above Perm. Datum

Drilling Measured From Kelly Bushing

Date 7/26/2012

Run Number Two

Depth Driller 3850

Depth Logger 3851

Bottom Logged Interval 3850

Top Log Interval 1800

Casing Driller 8.625 @ 964

Casing Logger 960

Bit Size 7.875

Type Fluid in Hole Chemical

Salinity, ppm CL 5500

Density / Viscosity 9.1 57

pH / Fluid Loss 11.0 8.8

Source of Sample Flowline

Rm @ Meas. Temp .82 @ 78

Rmf @ Meas. Temp .62 @ 78

Rmc @ Meas. Temp 1.11 @ 78

Source of Rmf / Rmc Charts

Rm @ BHT .56 @ 115

Operating Rig Time 6 Hours

Max Rec. Temp. F 115

Equipment Number 108

Location Hays

Recorded By J. Long

Witnessed By Rene Husted

<<< Fold Here >>>

All interpretations are opinions based on inferences from electrical or other measurements and we cannot and do not guarantee the accuracy or correctness of any interpretation, and we shall not, except in the case of gross or willful negligence on our part, be liable or responsible for any loss, costs, damages, or expenses incurred or sustained by anyone resulting from any interpretation made by any of our officers, agents or employees. These interpretations are also subject to our general terms and conditions set out in our current Price Schedule.

Comments

Thank you for using Log-Tech, Inc.  
(785) 625-3858

Great Bend, 4 Southwest on 156 Highway to Turner Blacktop (SW 30 Road), 5 West to SW 100 Avenue, 1/2 South, West Into



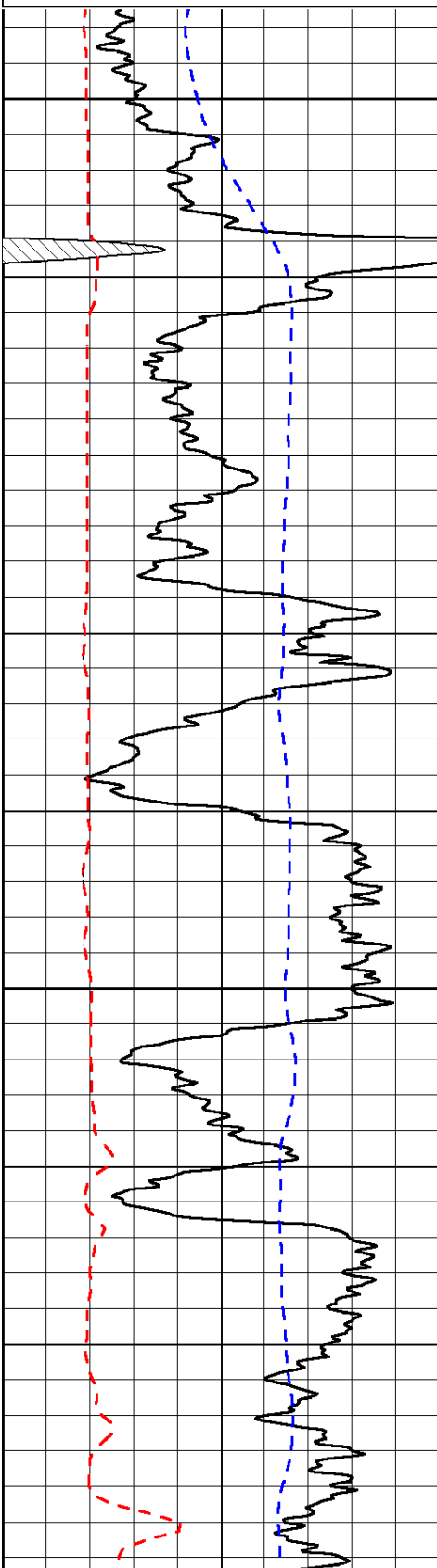
High Resolution

Database File: c:\warrior\data\fg holl\_penner trust unit no. 1-15\fgholl\_pennertrust\_1-15hd.db  
Dataset Pathname: dil/fghires  
Presentation Format: micro  
Dataset Creation: Thu Jul 26 18:14:25 2012  
Charted by: Depth in Feet scaled 1:120

0	Gamma Ray	150
6	Micro Log Caliper (GAPI)	16
-200	SP (mV)	0

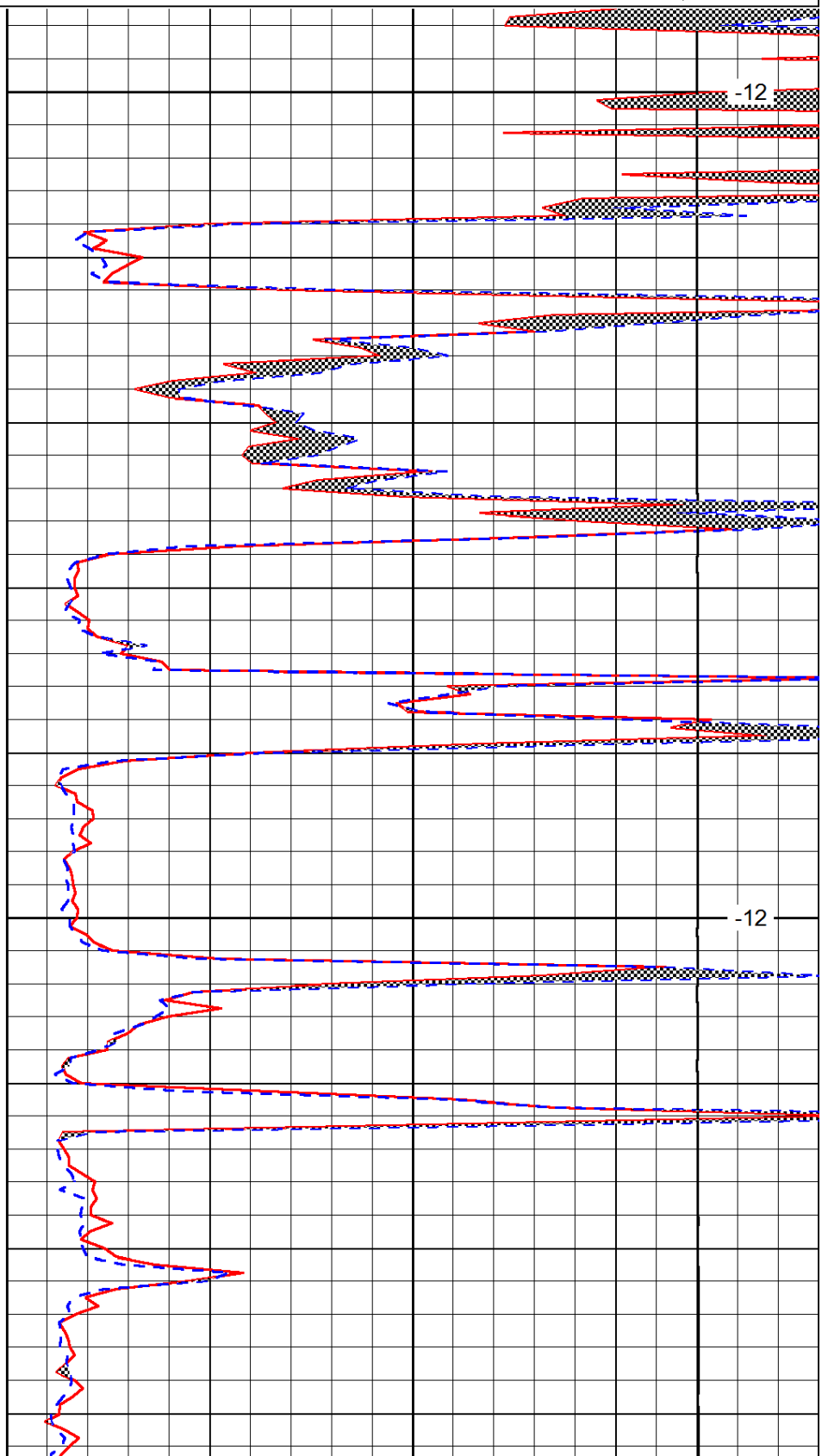
0	Micro Inverse 1 X 1	40
0	Micro Normal 2"	40
15000	Line Weight	0

LSPD



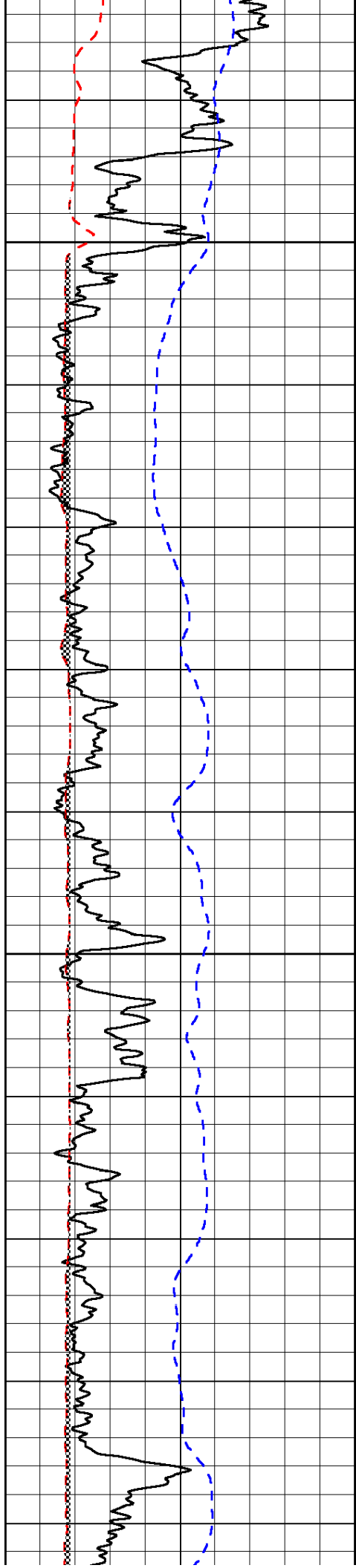
3600

3650



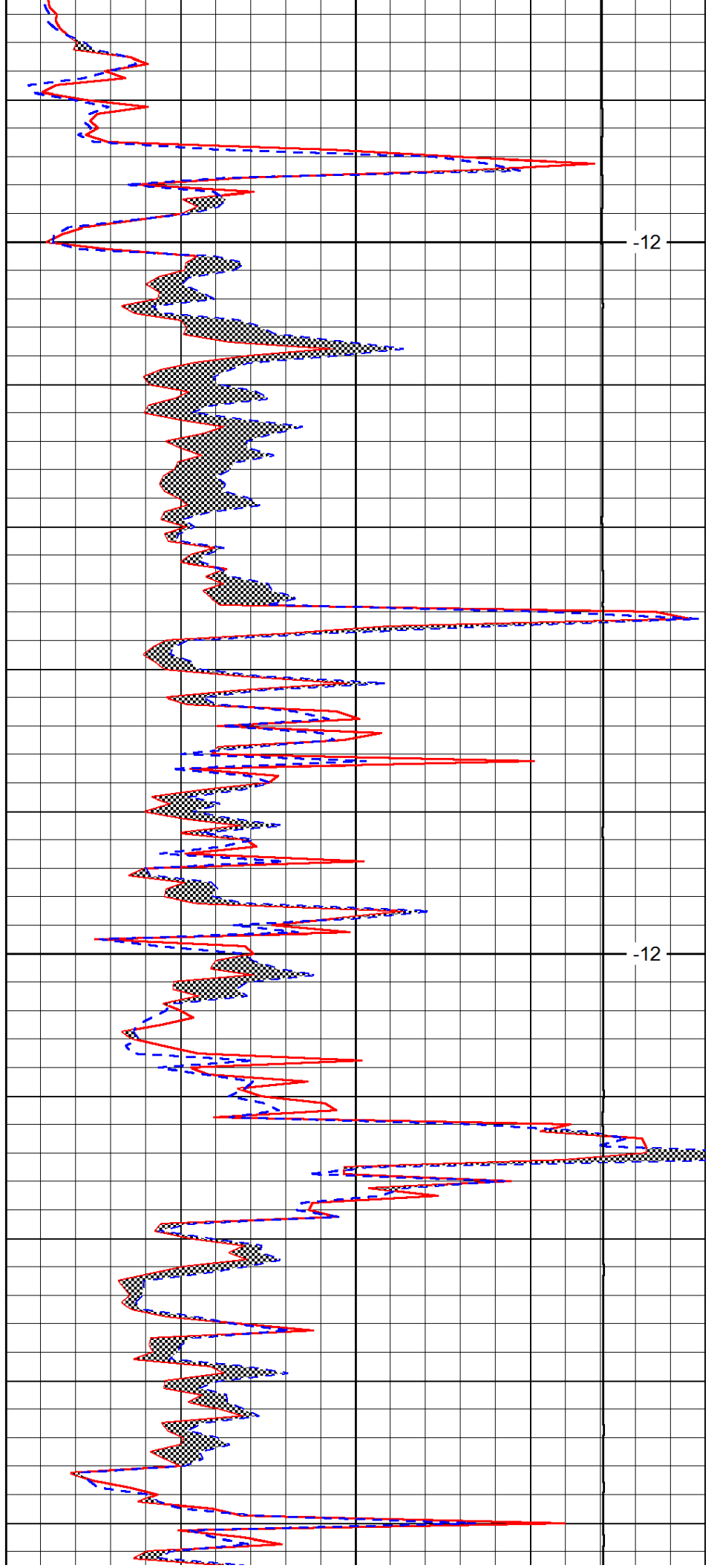
-12

-12



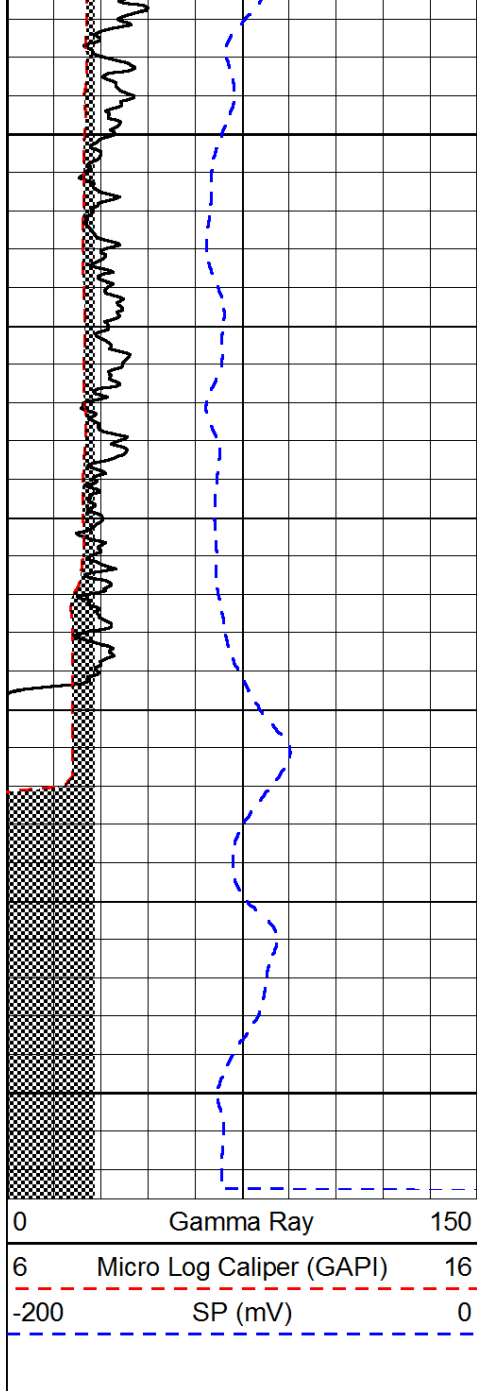
3700

3750



-12

-12

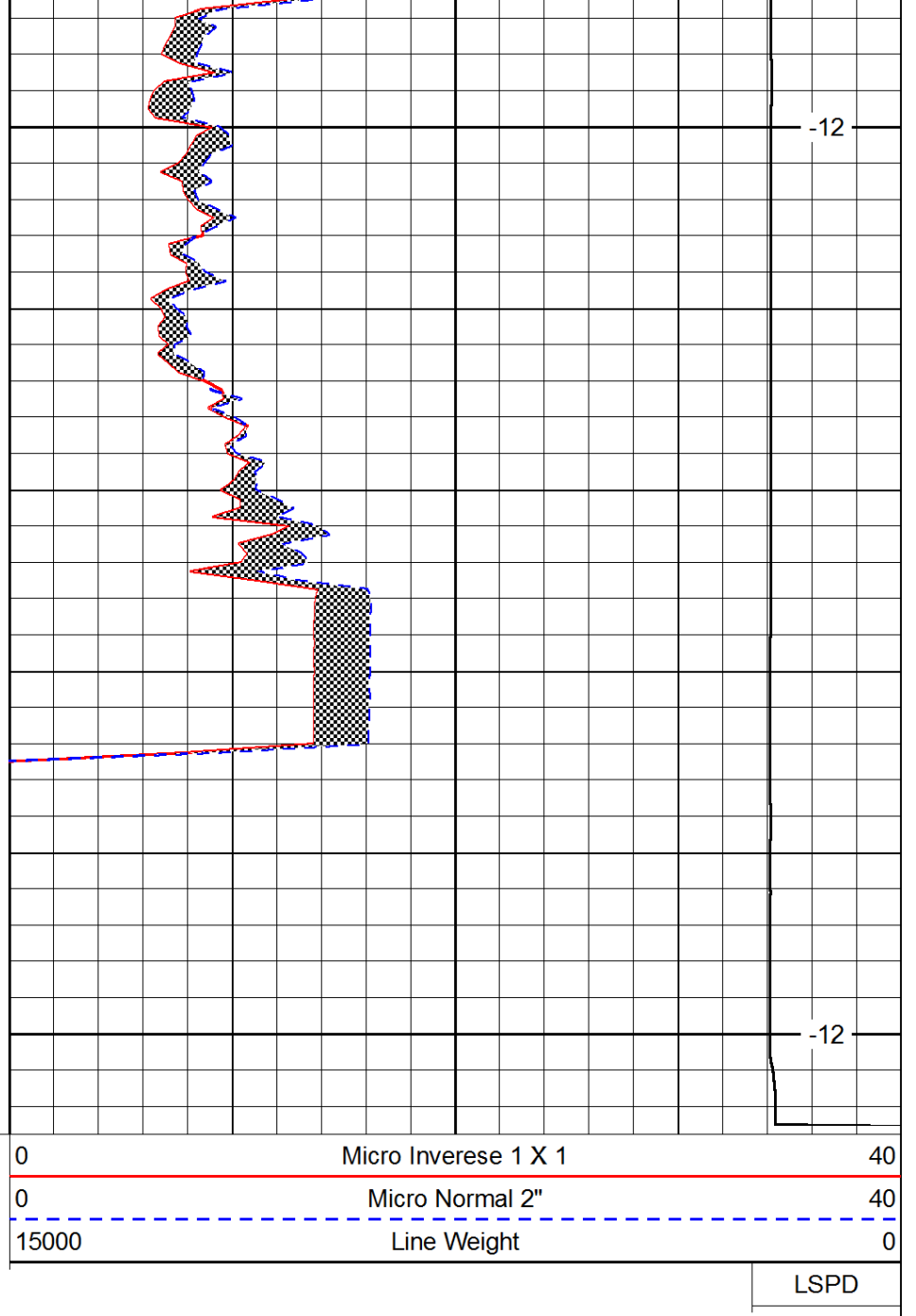


3800

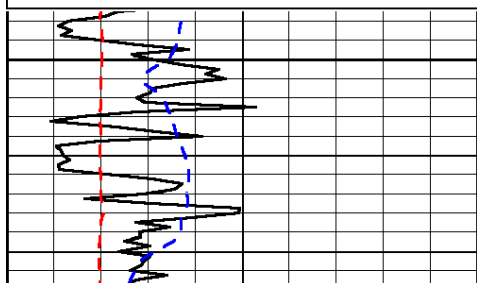
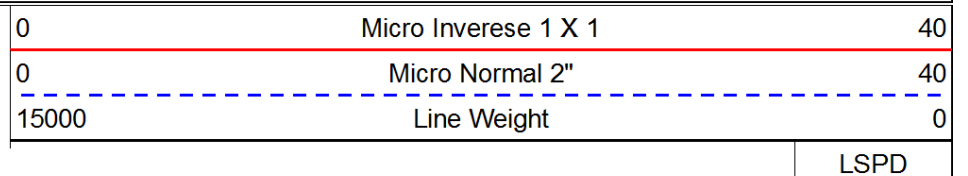
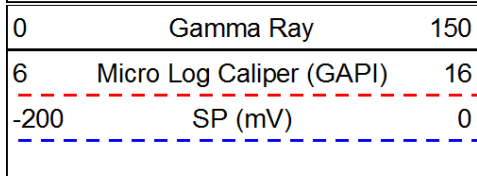
-12

3850

-12

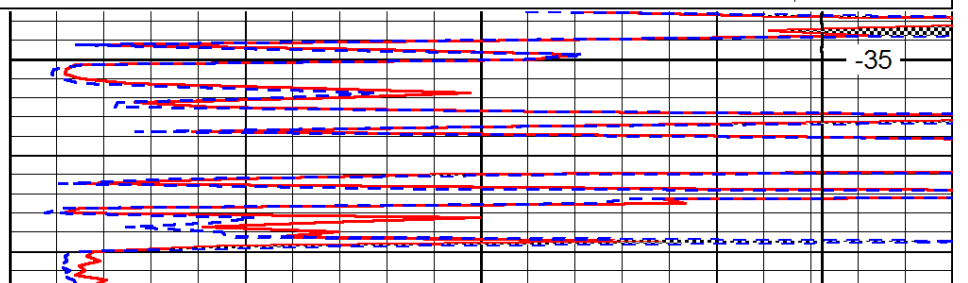


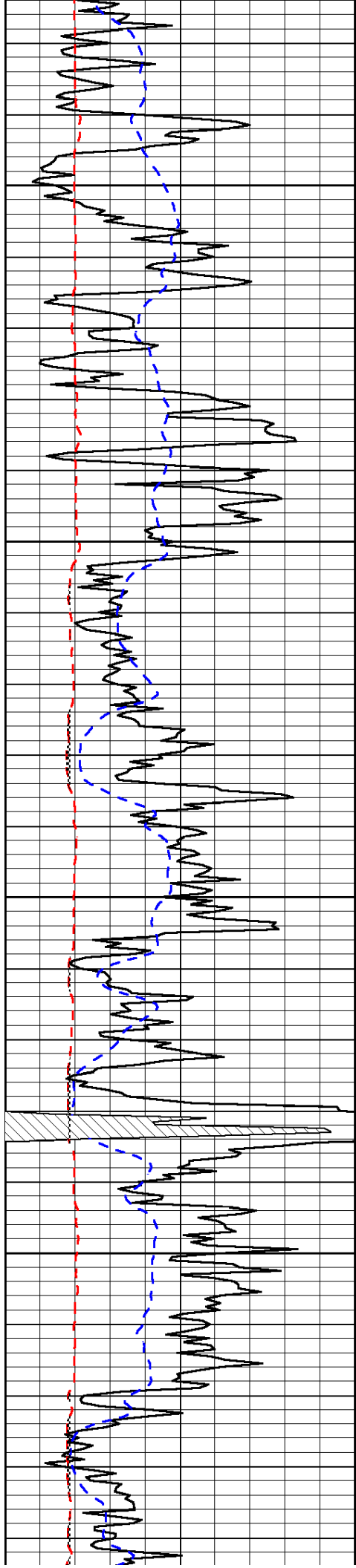
Database File: c:\warrior\data\fg holl\_penner trust unit no. 1-15\fg holl\_pennertrust\_1-15hd.db  
 Dataset Pathname: dil/fgstck  
 Presentation Format: micro  
 Dataset Creation: Thu Jul 26 18:14:27 2012  
 Charted by: Depth in Feet scaled 1:240



1800

-35



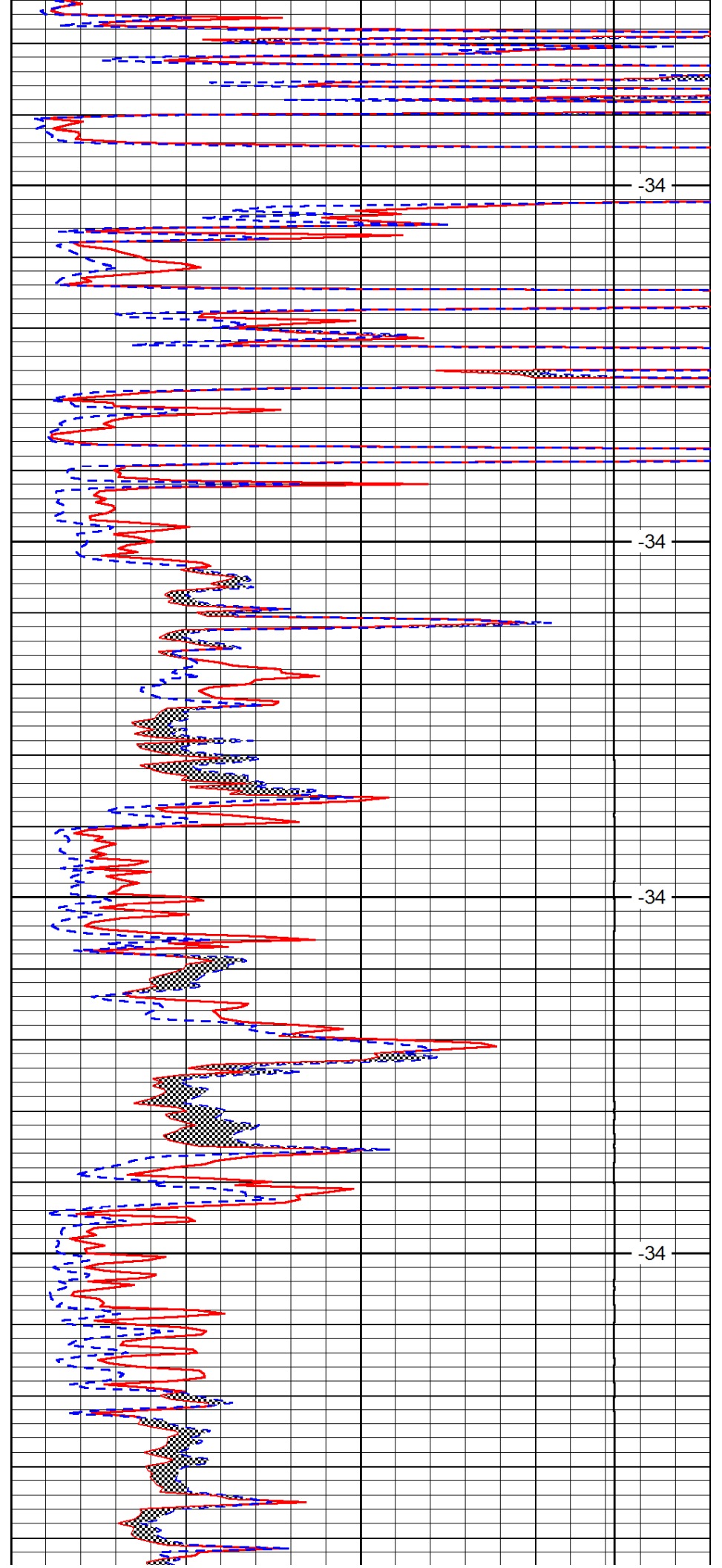


1850

1900

1950

2000

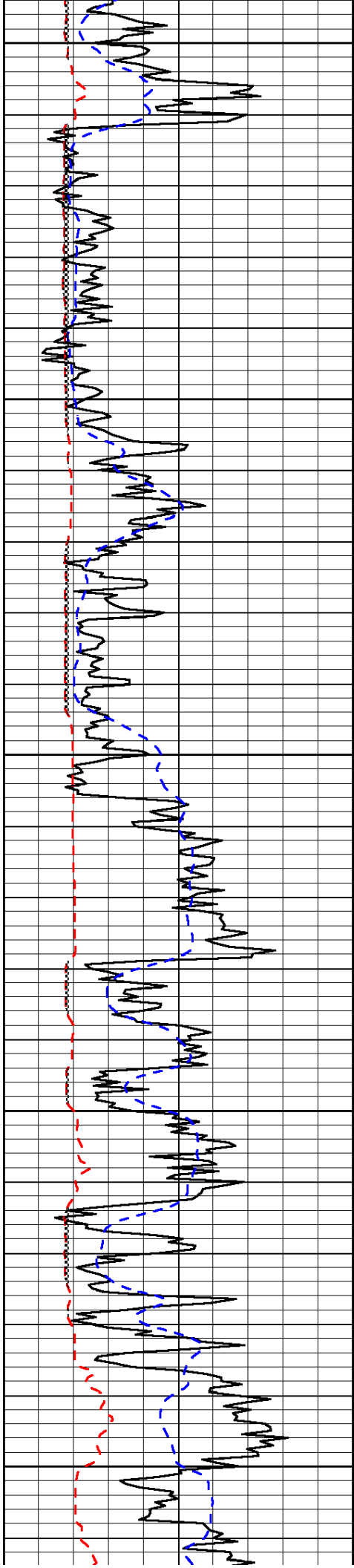


-34

-34

-34

-34



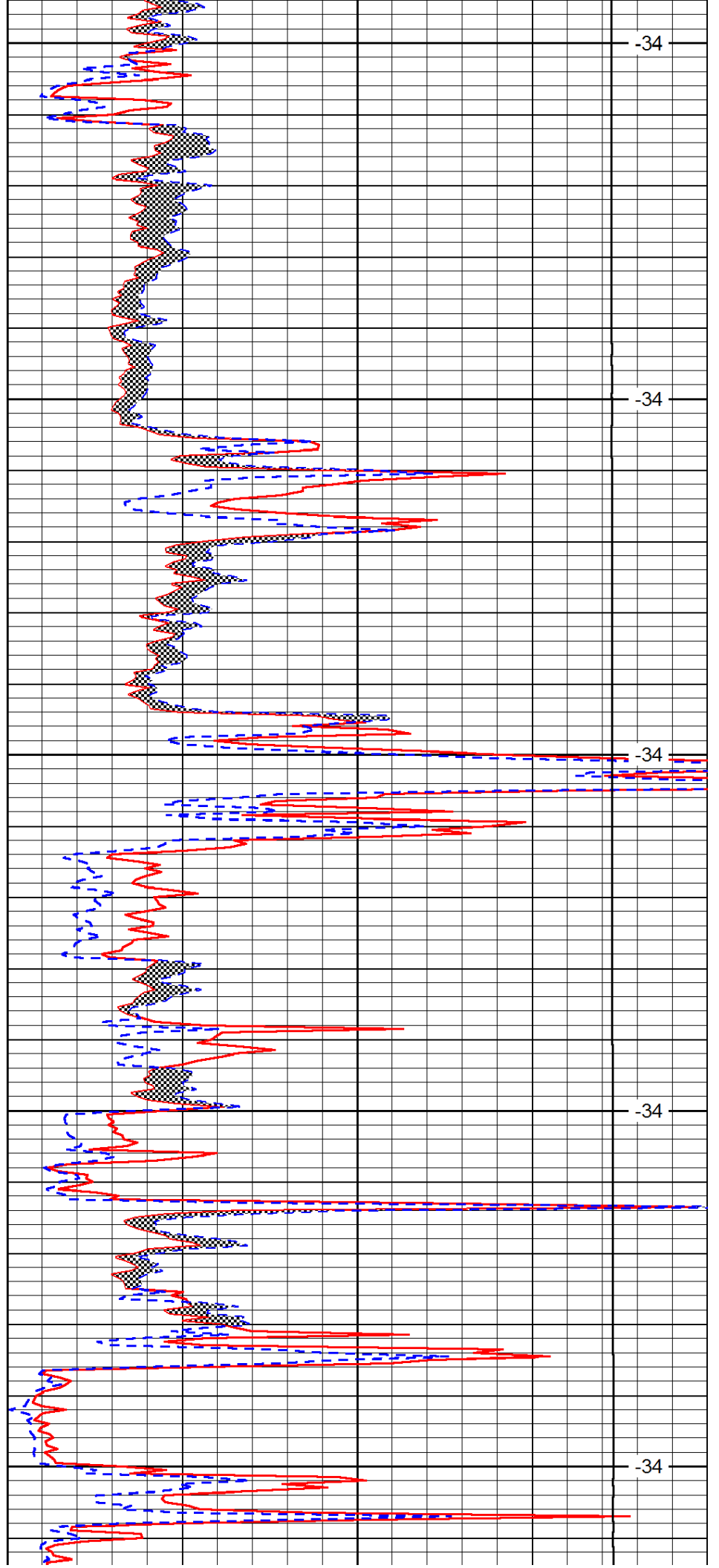
2050

2100

2150

2200

2250



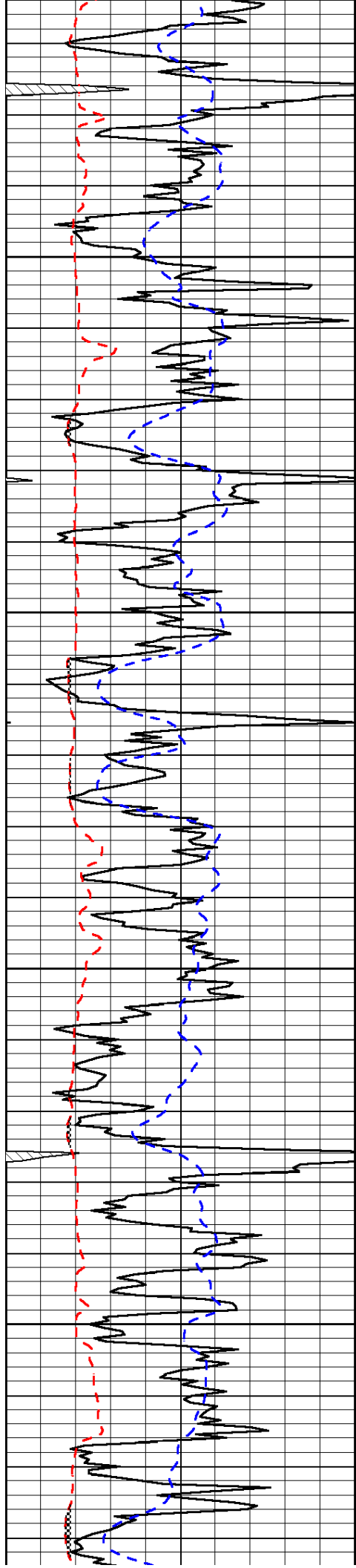
-34

-34

-34

-34

-34

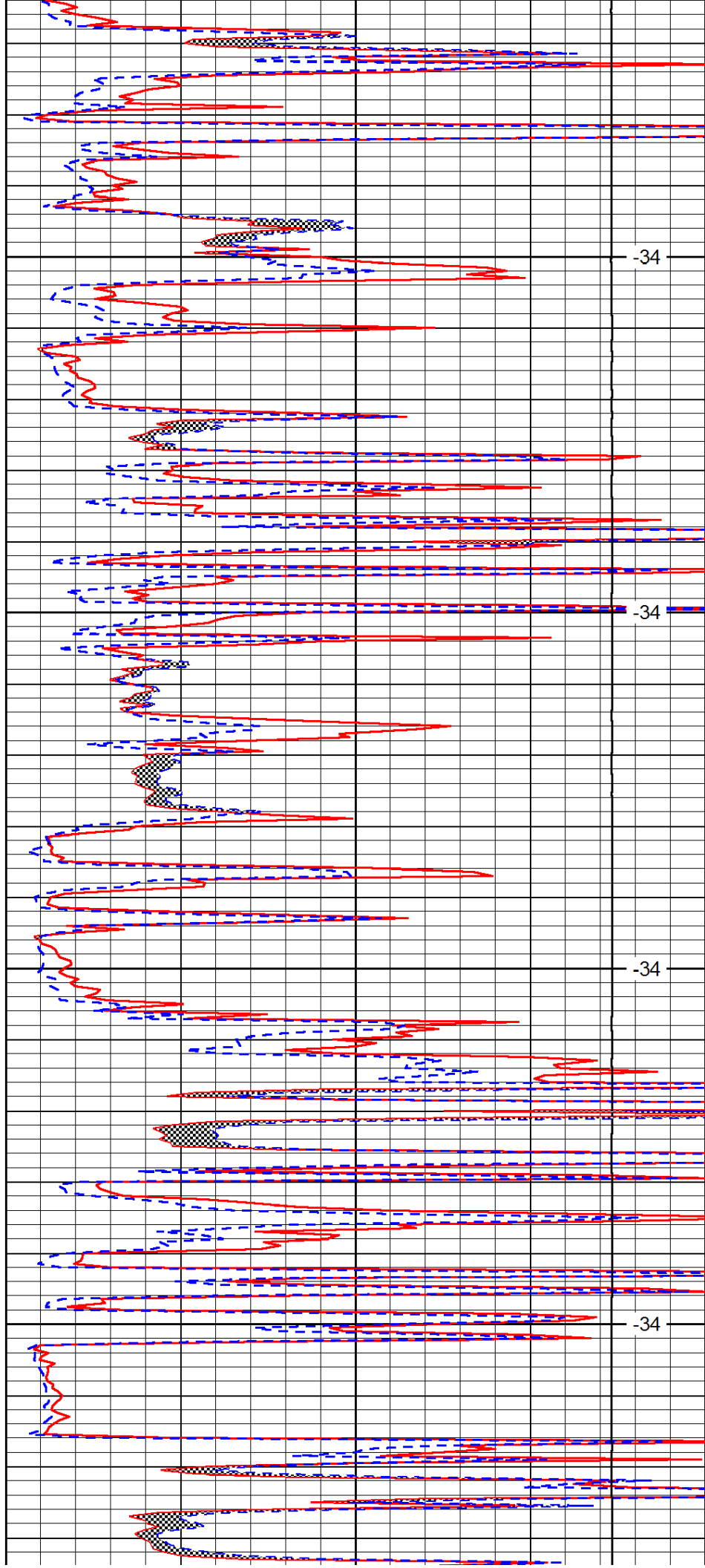


2300

2350

2400

2450

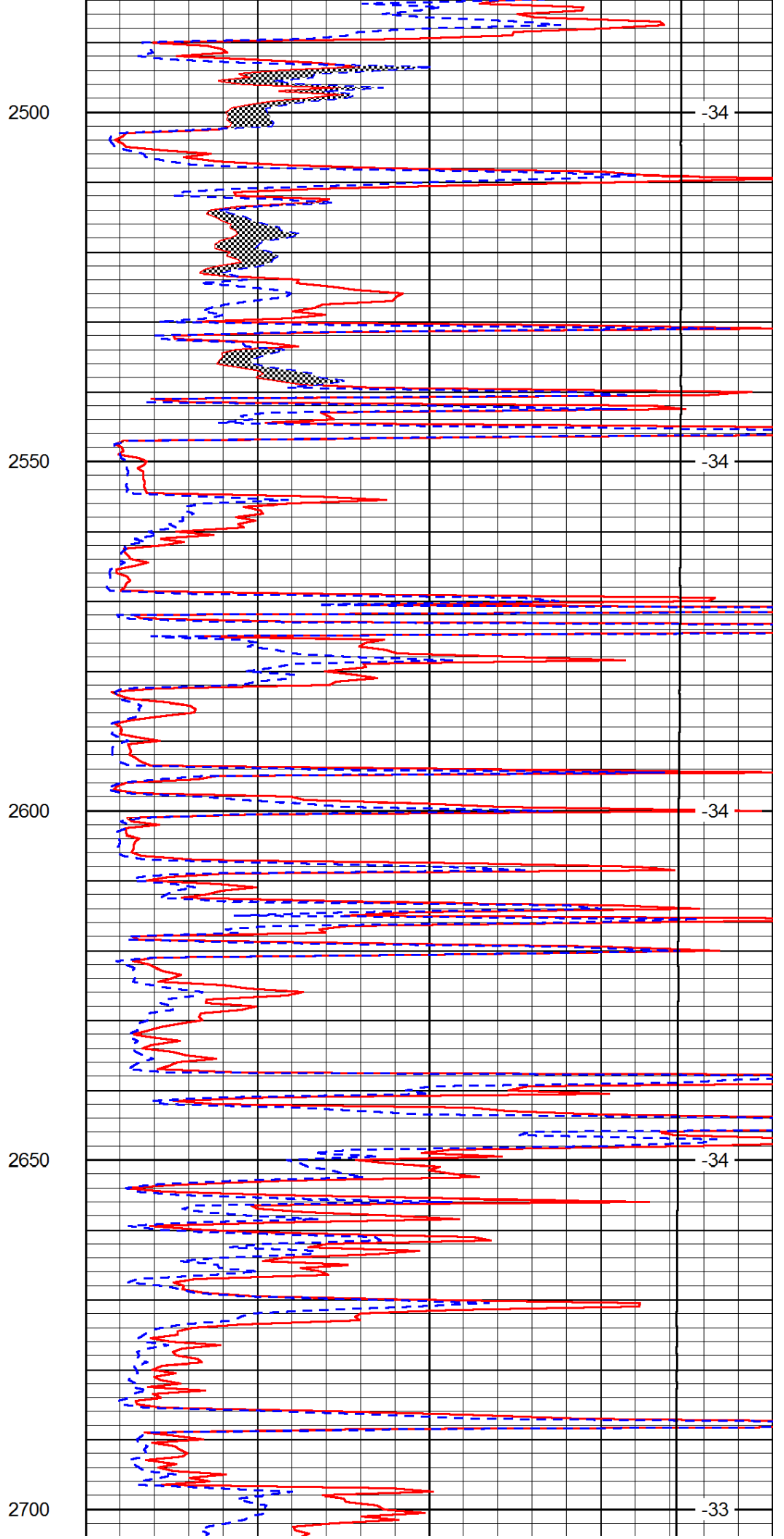
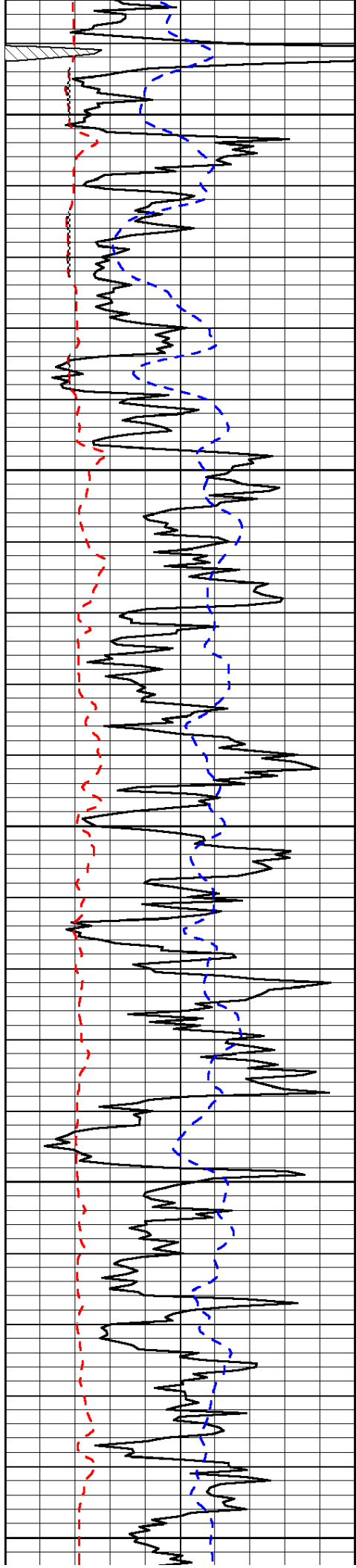


-34

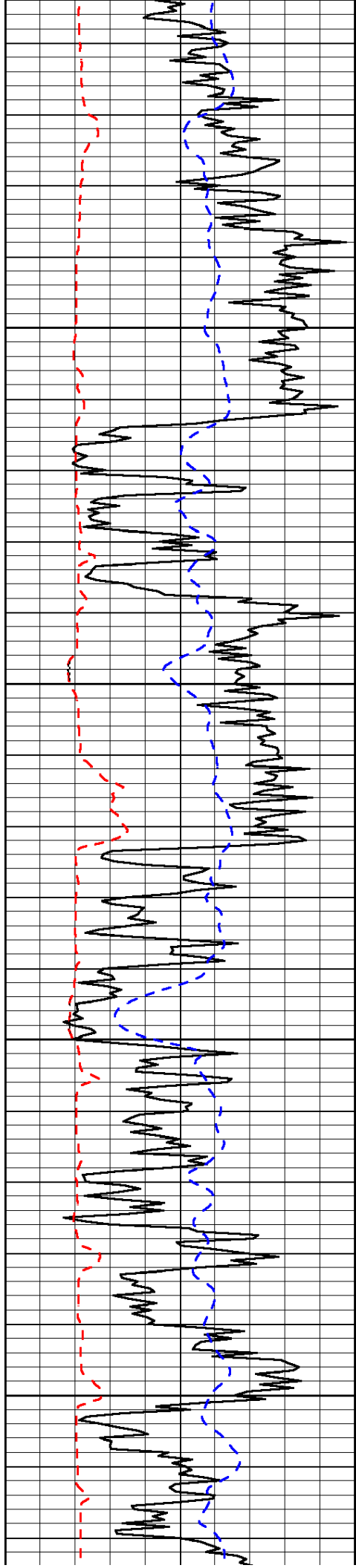
-34

-34

-34





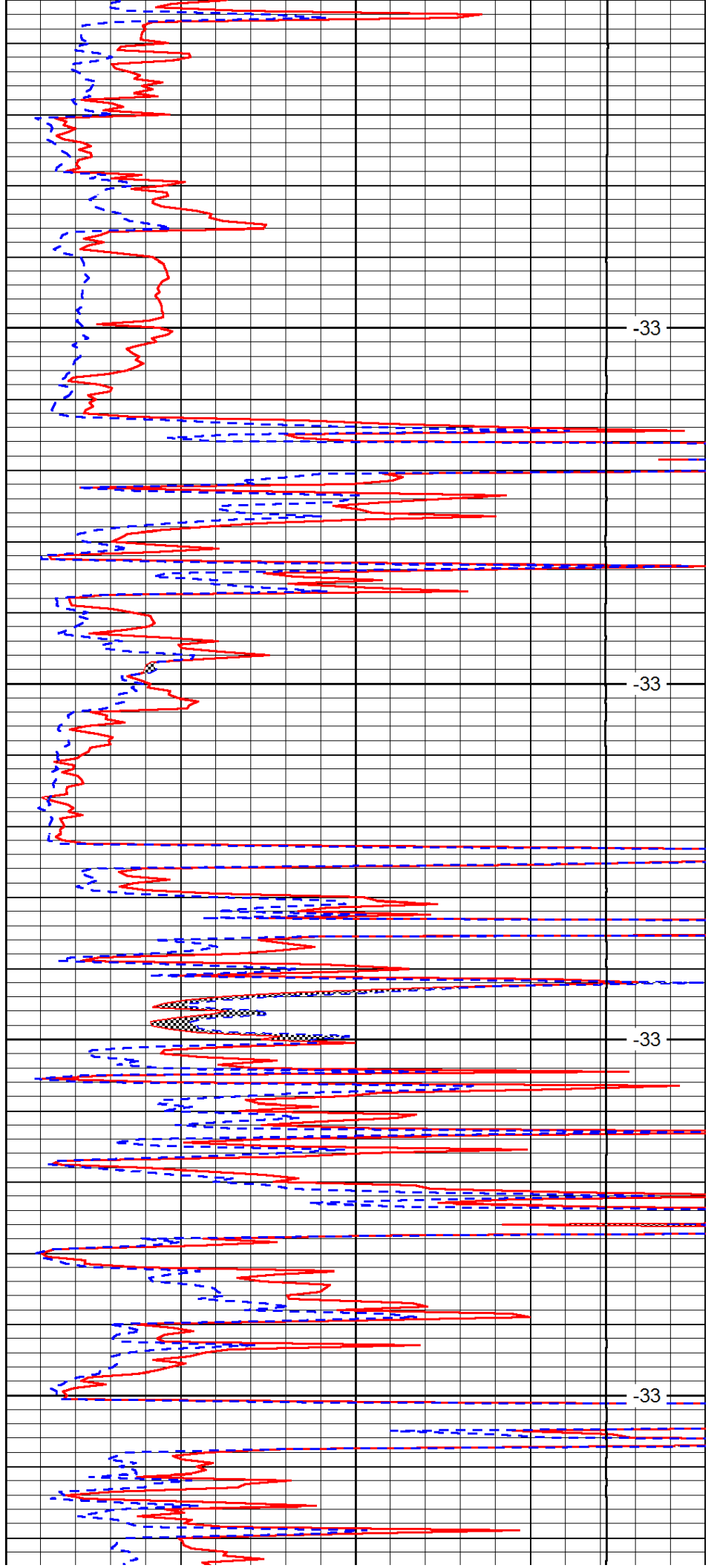


2750

2800

2850

2900

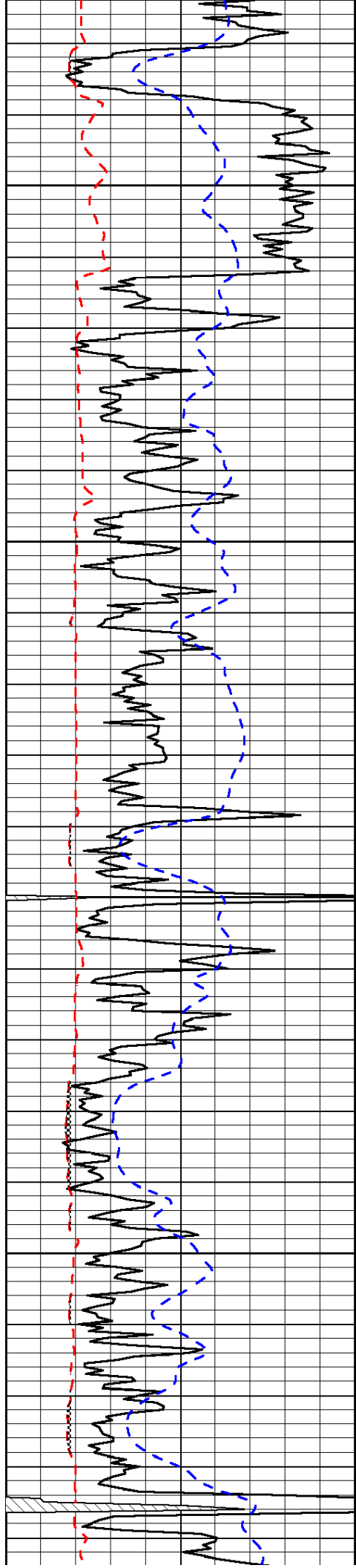


-33

-33

-33

-33

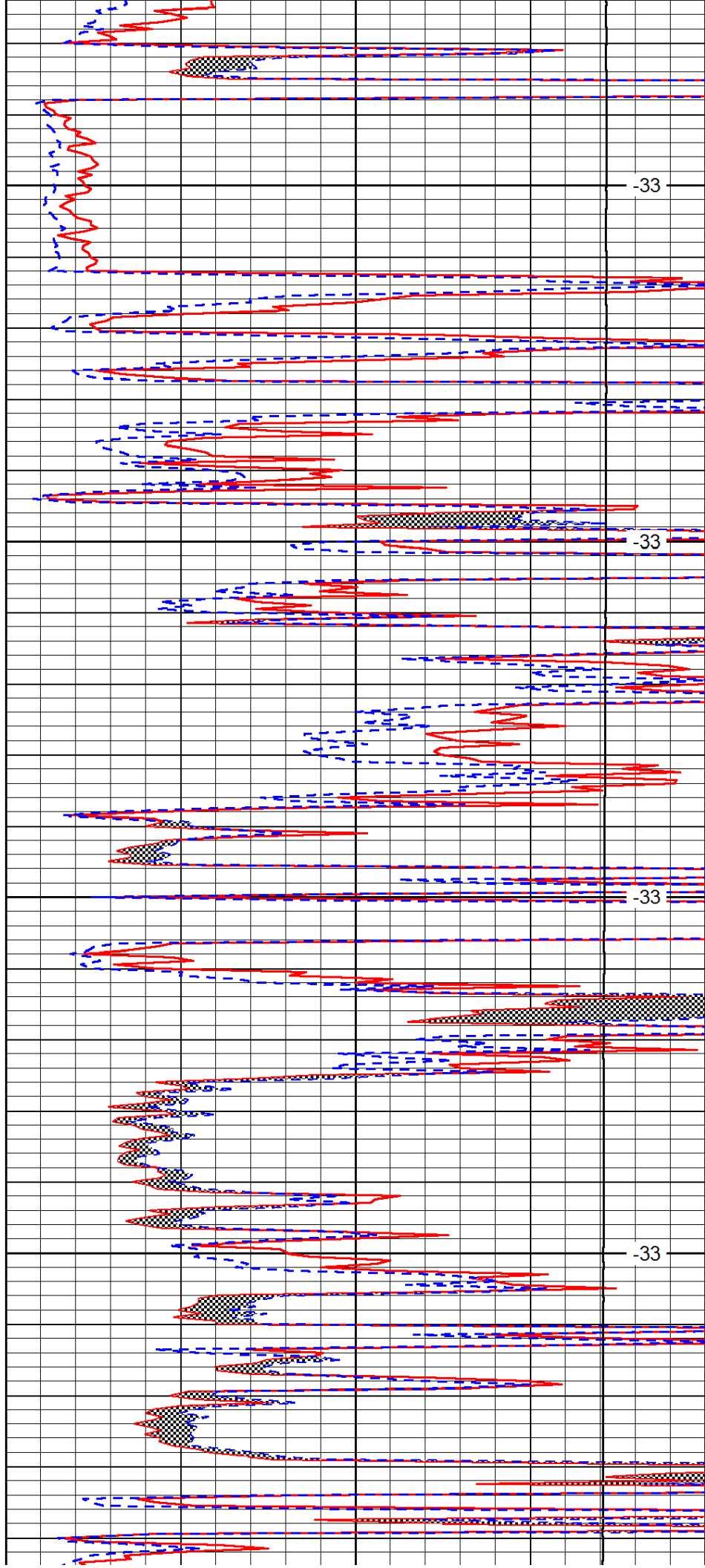


2950

3000

3050

3100

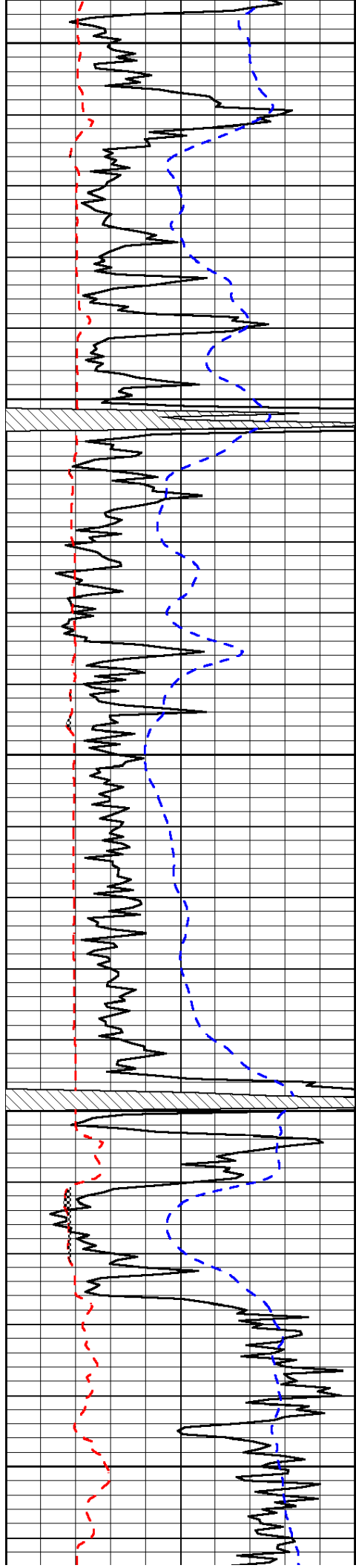


-33

-33

-33

-33



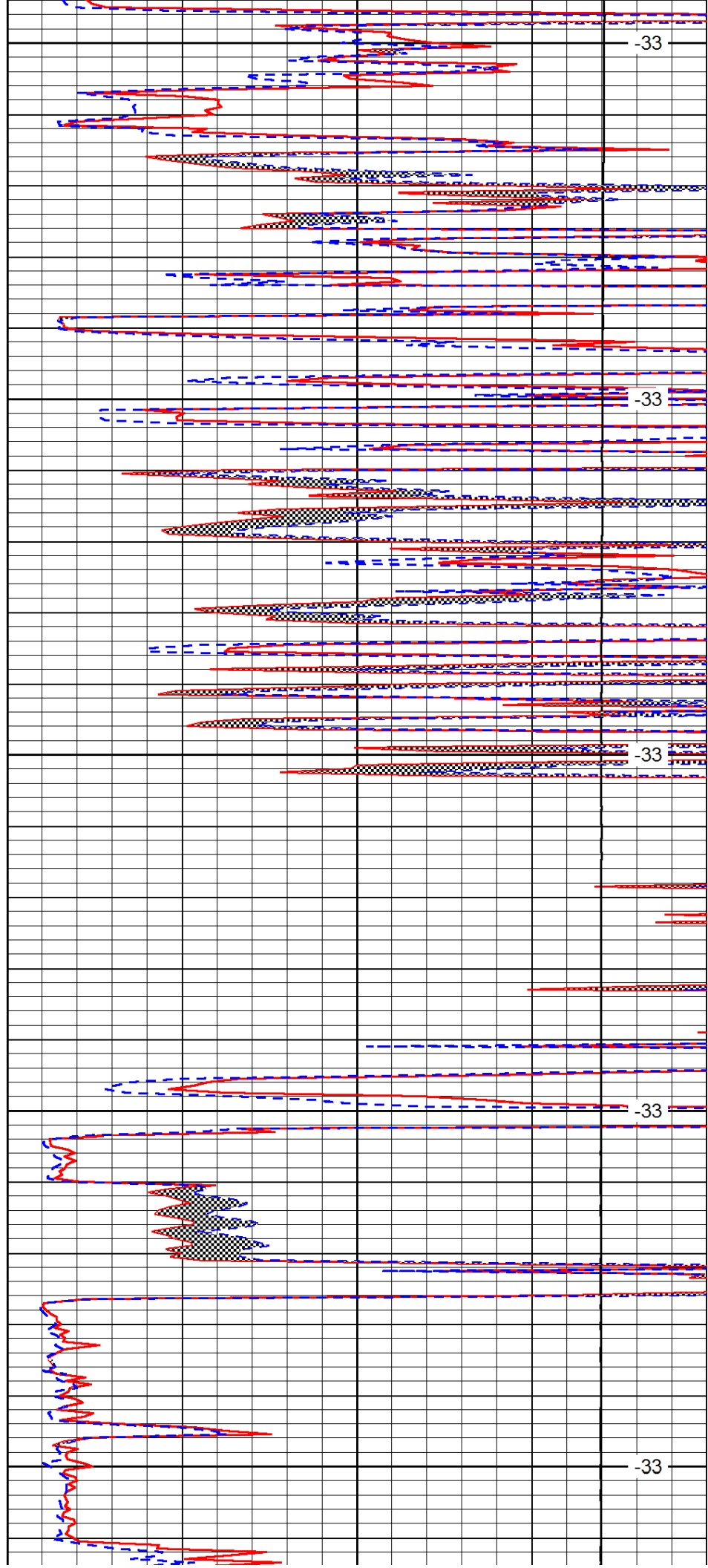
3150

3200

3250

3300

3350



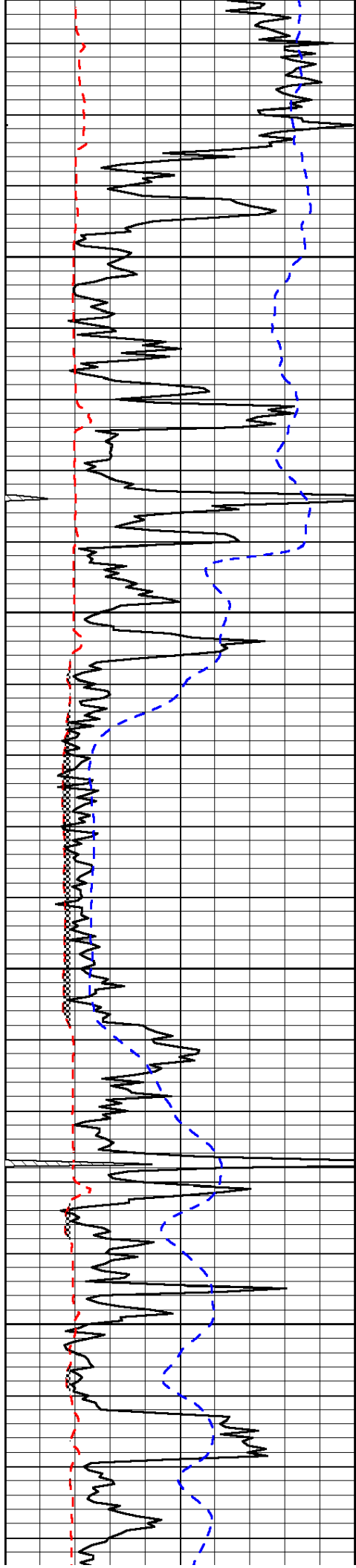
-33

-33

-33

-33

-33

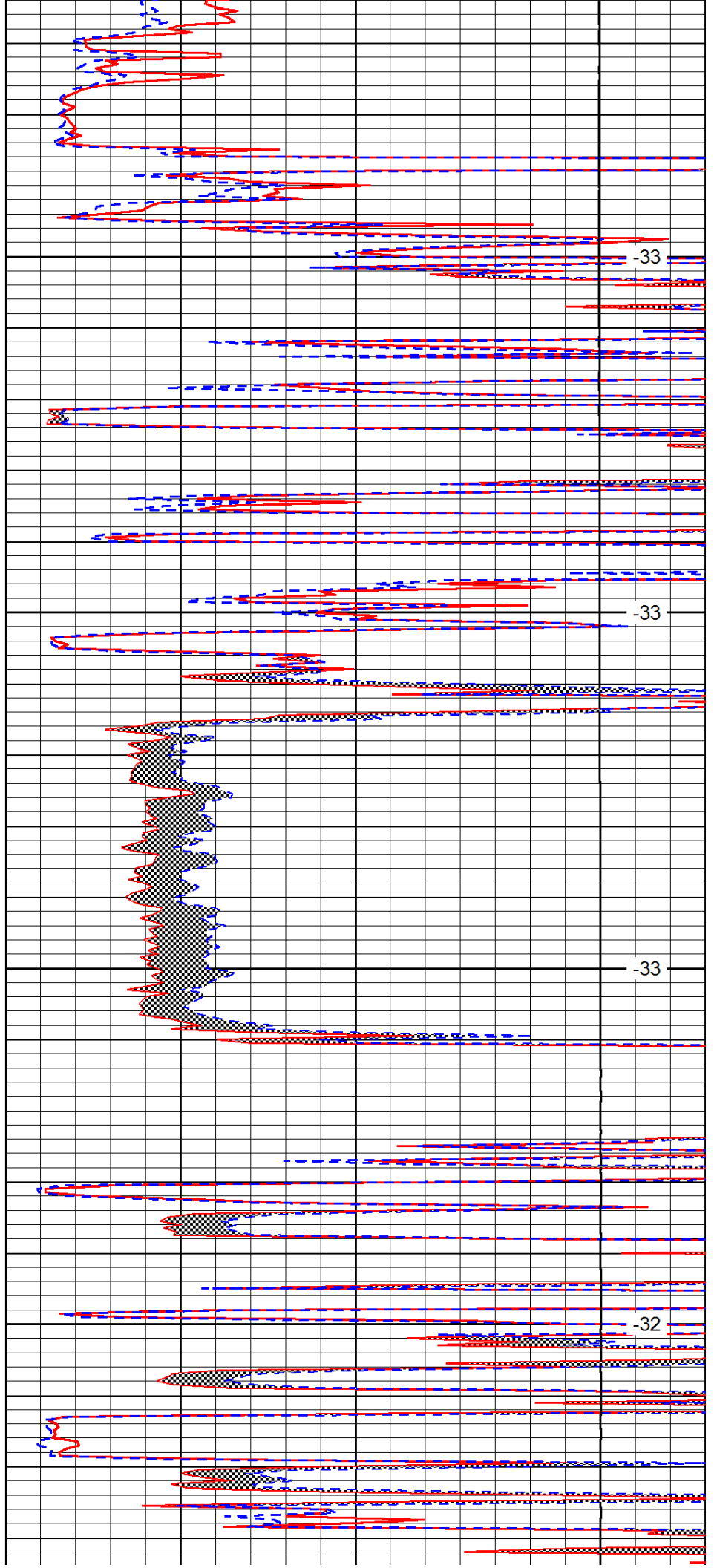


3400

3450

3500

3550

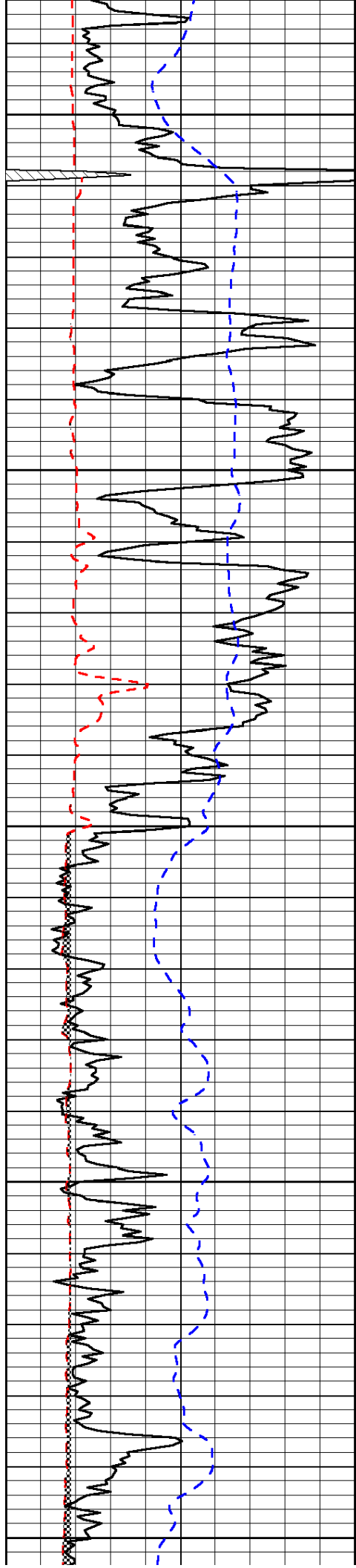


-33

-33

-33

-32



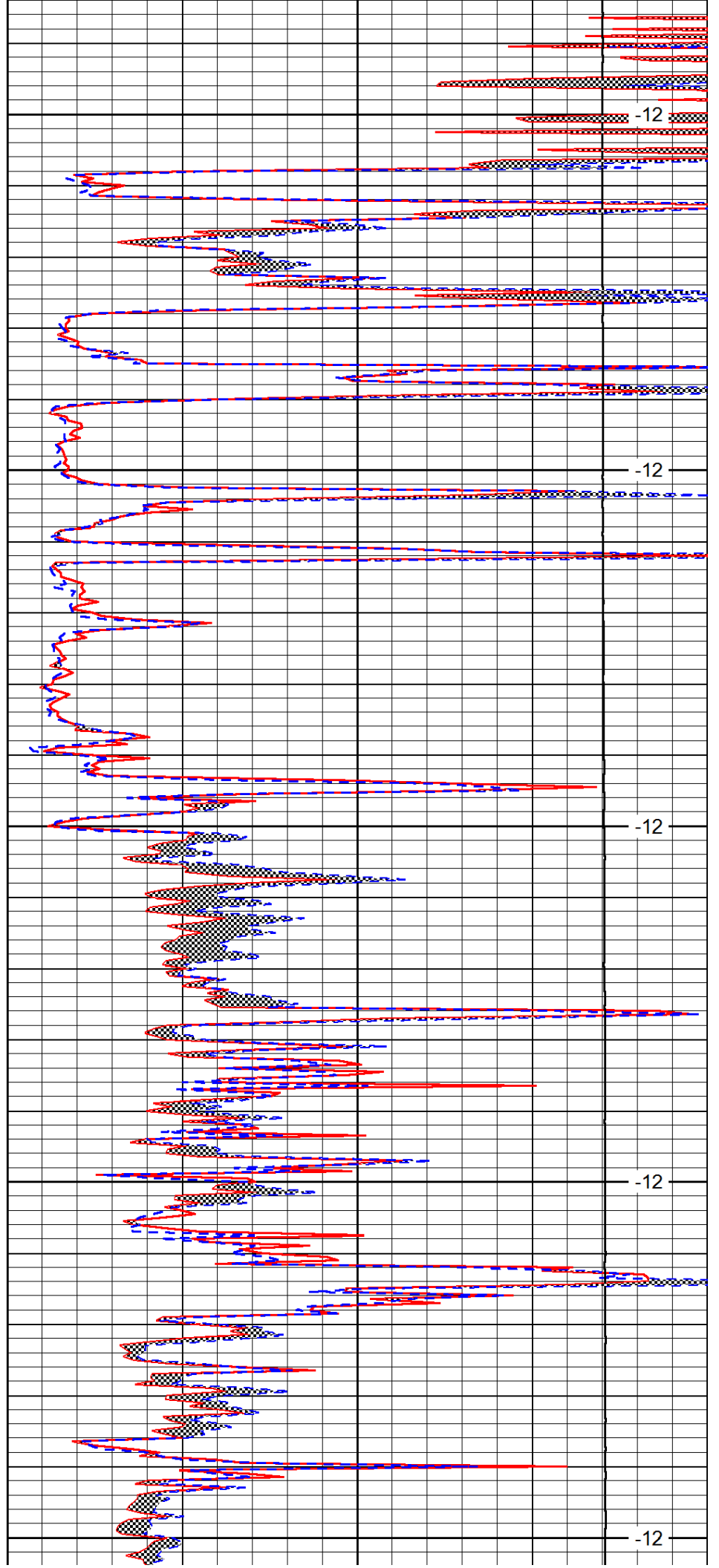
3600

3650

3700

3750

3800



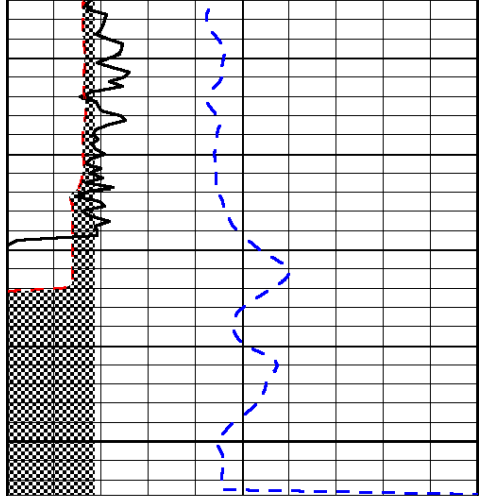
-12

-12

-12

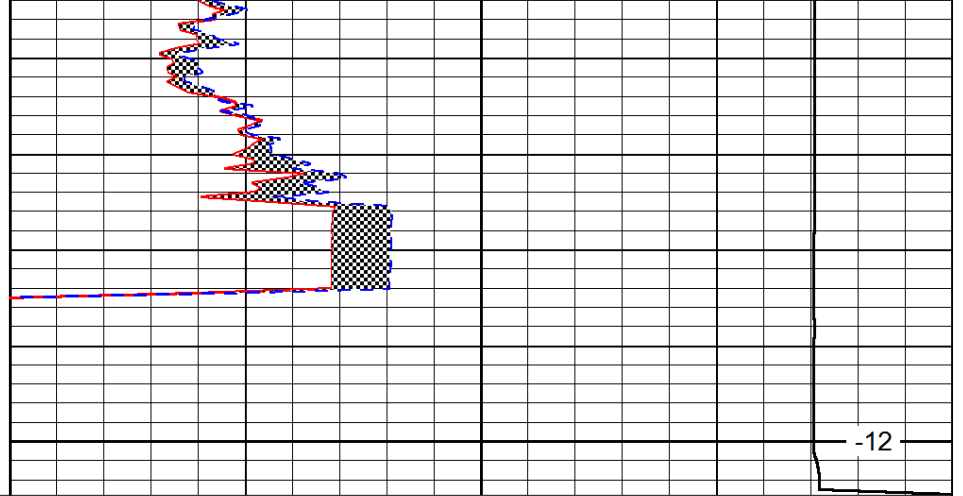
-12

-12



0	Gamma Ray	150
6	Micro Log Caliper (GAPI)	16
-200	SP (mV)	0

3850



0	Micro Inverse 1 X 1	40
0	Micro Normal 2"	40
15000	Line Weight	0

-12

LSPD