



DIGITAL LOG (785) 625-3858

Borehole Compensated  
Sonic Log

15-009-25,729-00-00

API No.

Company F.G. Holl Company, LLC  
Well Penner Trust Unit No. 1-15  
Field  
County Barton State Kansas

Location 80' N, 3' W of C E/2 E/2 E/2  
2,560' FNL & 333' FEL  
Sec: 15 Twp: 20S Rge: 15W

Other Services  
CNL/CDL  
MEL/DIL

Permanent Datum Ground Level Elevation 1976  
Log Measured From Kelly Bushing 8 Ft. Above Perm. Datum  
Drilling Measured From Kelly Bushing

Elevation  
K.B. 1984  
D.F.  
G.L. 1976

Date	7/26/2012	
Run Number	Two	
Type Log	BHC Sonic	
Depth Driller	3850	
Depth Logger	3851	
Bottom Logged Interval	3840	
Top Logged Interval	950	
Type Fluid In Hole	Chemical	
Salinity, PPM CL	5500	
Density	9.1	
Level	Full	
Max. Rec. Temp. F	115	
Operating Rig Time	6 Hours	
Equipment -- Location	108 Hays	
Recorded By	J. Long	
Witnessed By	Rene Husted	

Borehole Record

Casing Record

Run No.	Bit	From	To	Size	Wgt.	From	To
1	12.25	00	964	8.625	24#	00	964
2	7.875	964	3850				

<<< Fold Here >>>

All interpretations are opinions based on inferences from electrical or other measurements and we cannot and do not guarantee the accuracy or correctness of any interpretation, and we shall not, except in the case of gross or willful negligence on our part, be liable or responsible for any loss, costs, damages, or expenses incurred or sustained by anyone resulting from any interpretation made by any of our officers, agents or employees. These interpretations are also subject to our general terms and conditions set out in our current Price Schedule.

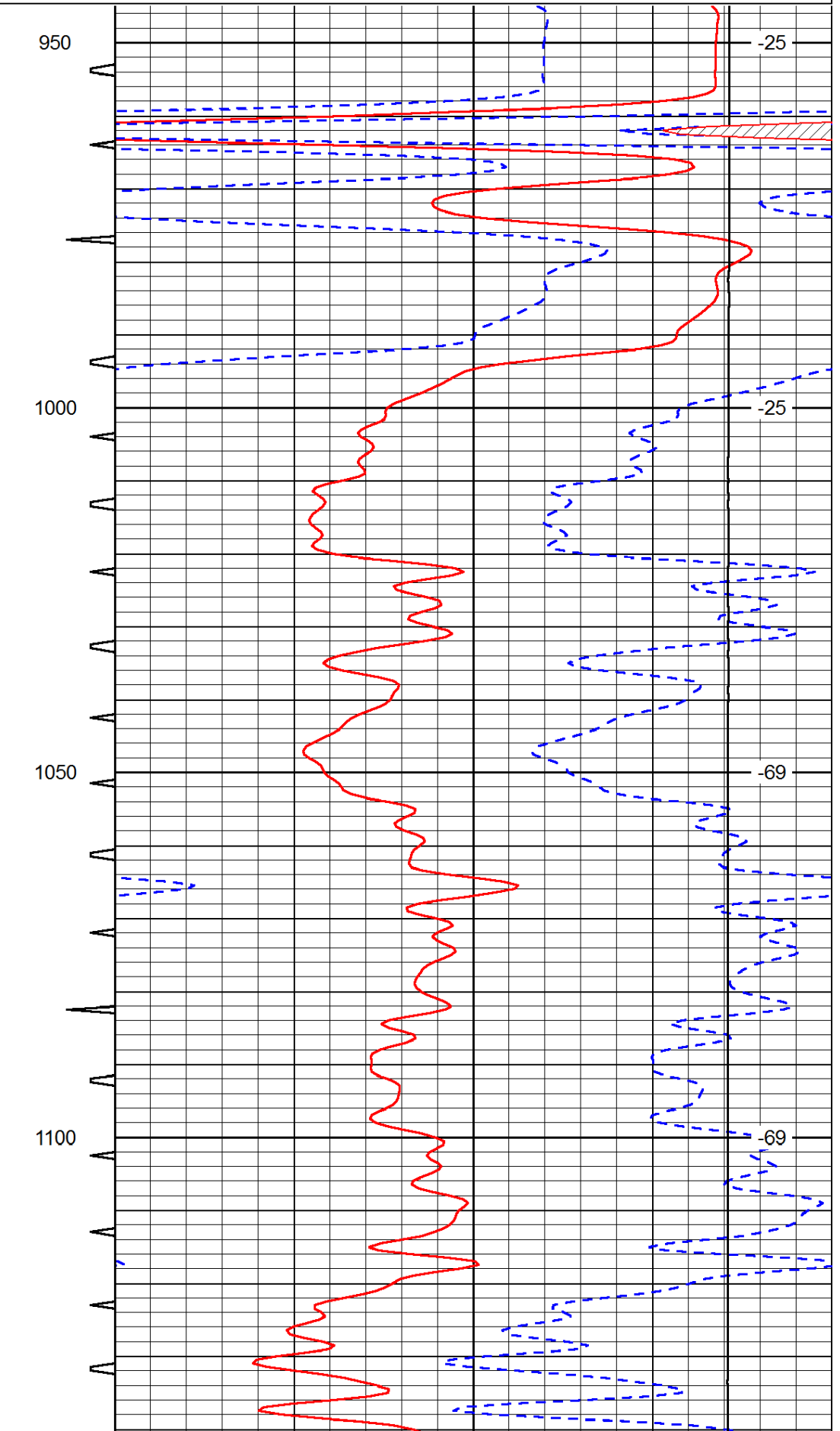
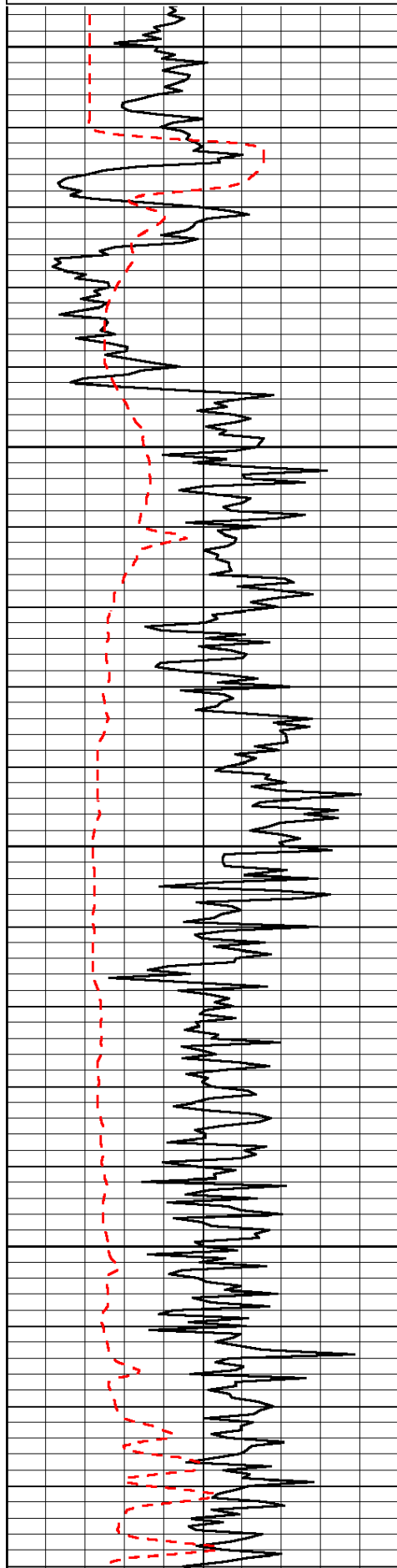
Comments

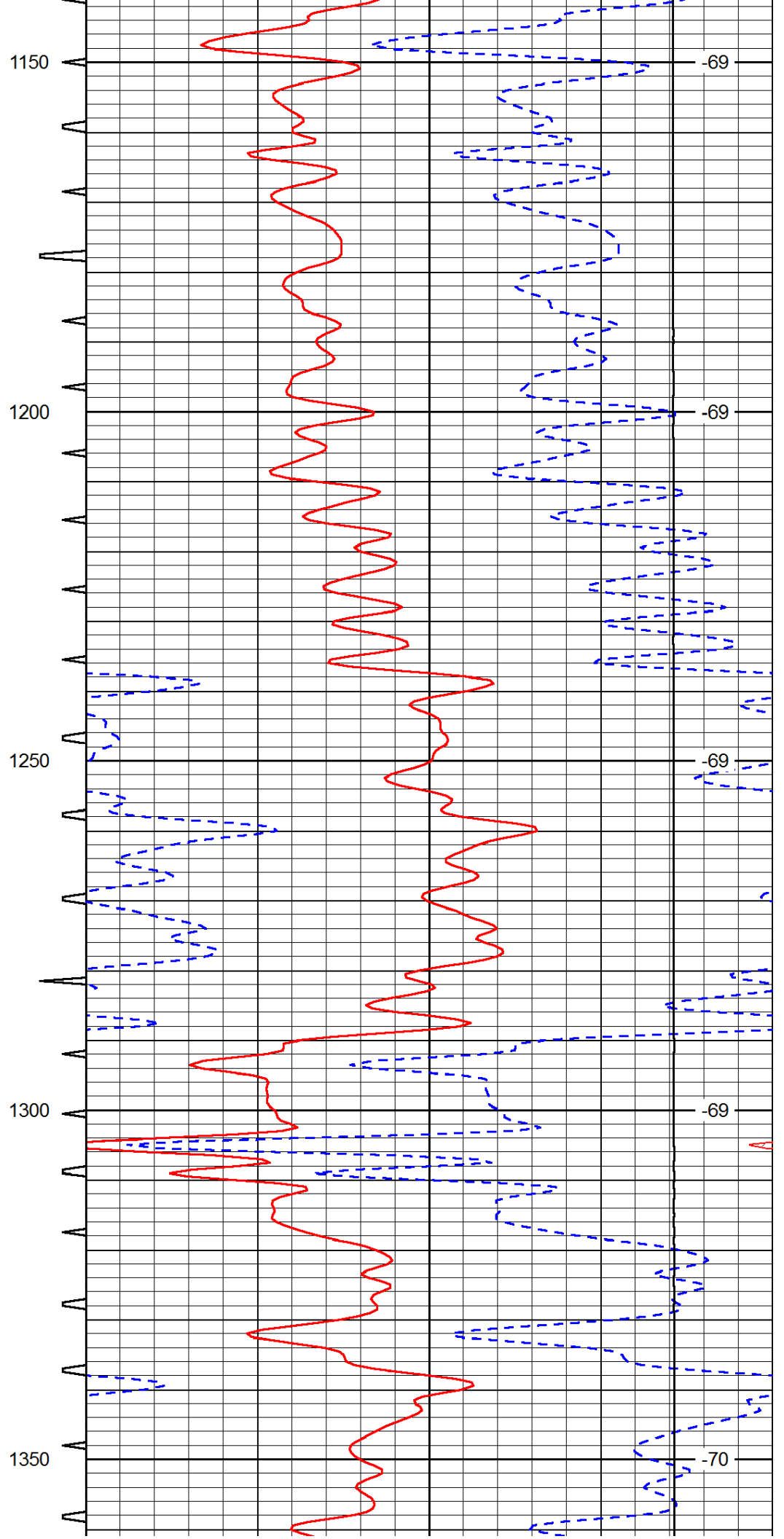
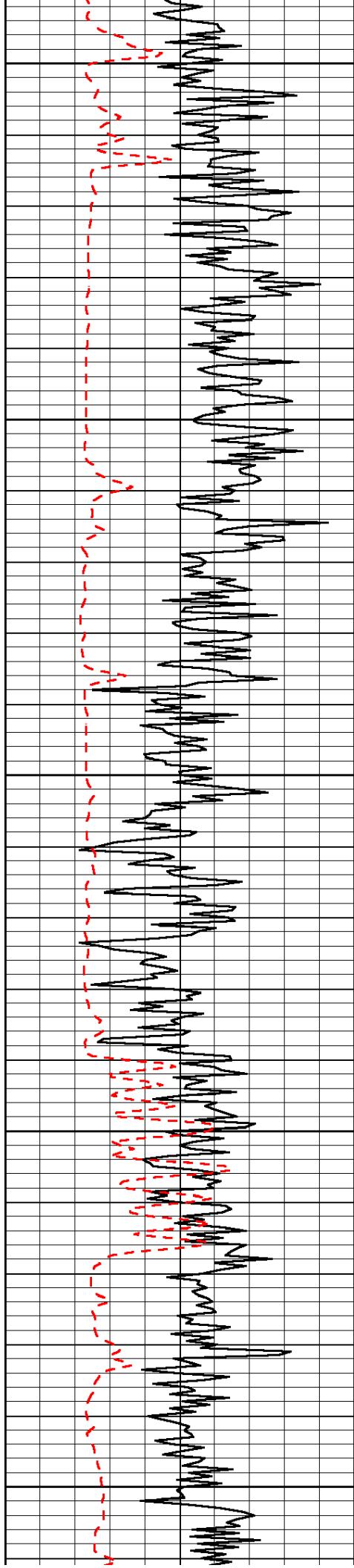
Thank you for using Log-Tech, Inc.  
(785) 625-3858  
  
Great Bend, 4 Southwest on 156 Highway to Turner Blacktop (SW 30 Road), 5 West to SW 100 Avenue, 1/2 South, West Into

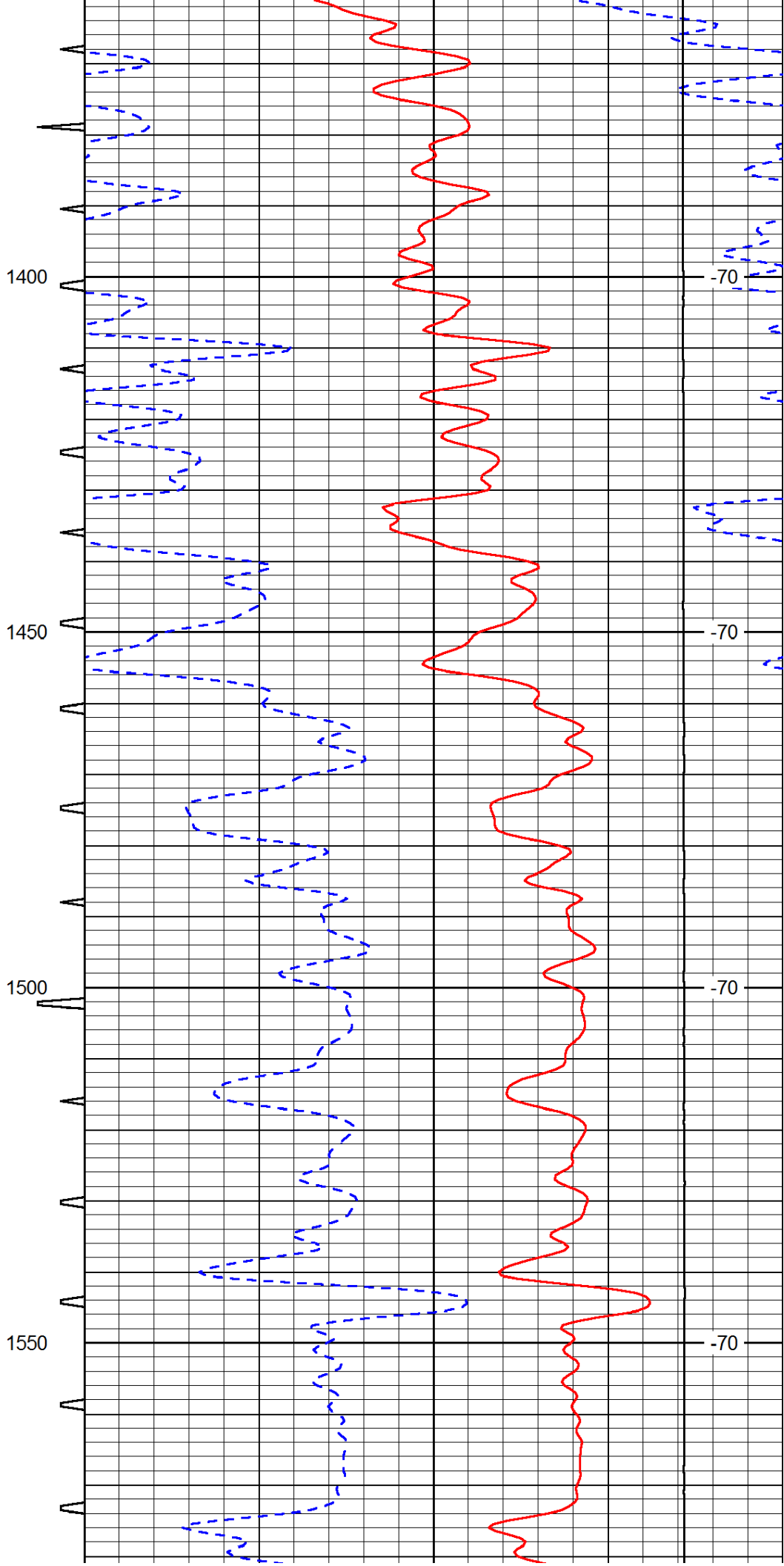
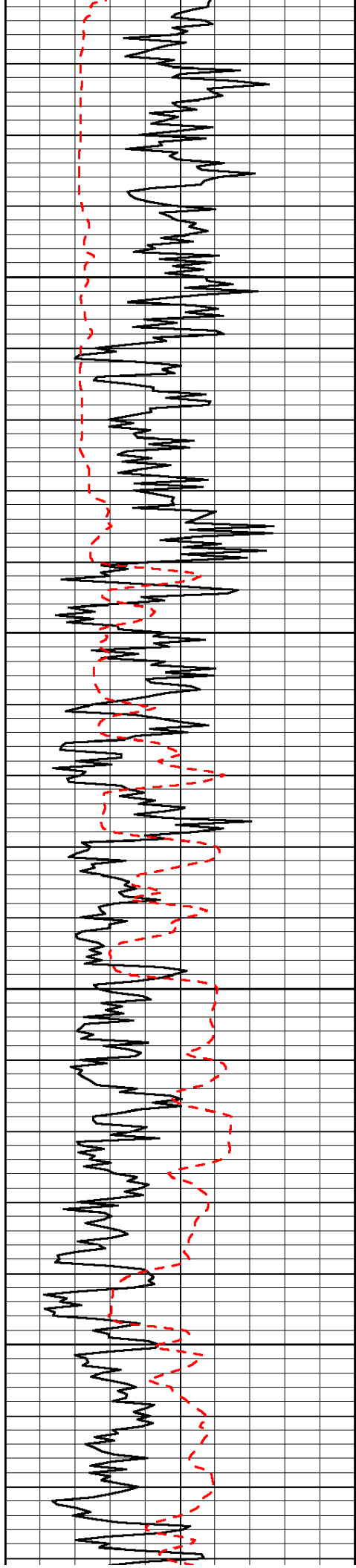
Database File: c:\warrior\data\fg holl\_penner trust unit no. 1-15\fgholl\_pennertrust\_1-15hd.db  
Dataset Pathname: dil/fgstck  
Presentation Format: sonic  
Dataset Creation: Thu Jul 26 18:14:27 2012  
Charted by: Depth in Feet scaled 1:240

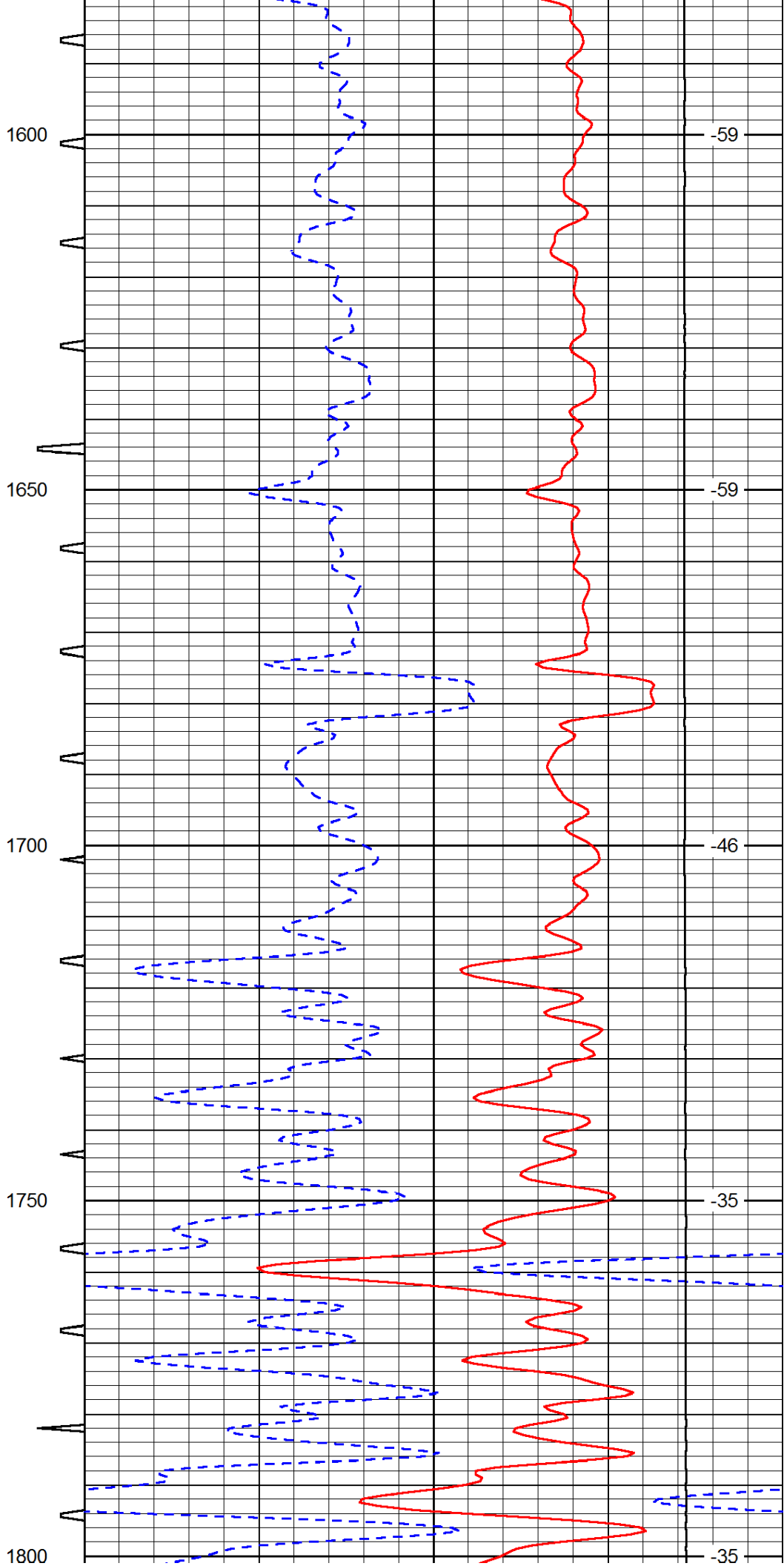
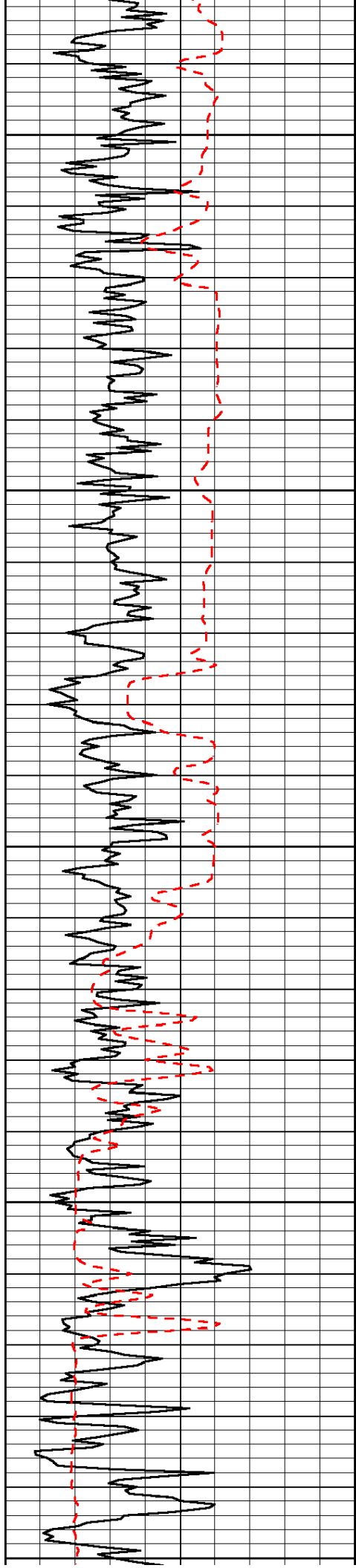
0	Gamma Ray	150	Sonic Int	140	Delta Time (usec/ft)	40
150	Gamma Ray	300	5	0	SPOR	-10
6	Caliper (GAPI)	16		15000	LTEN (lb)	0

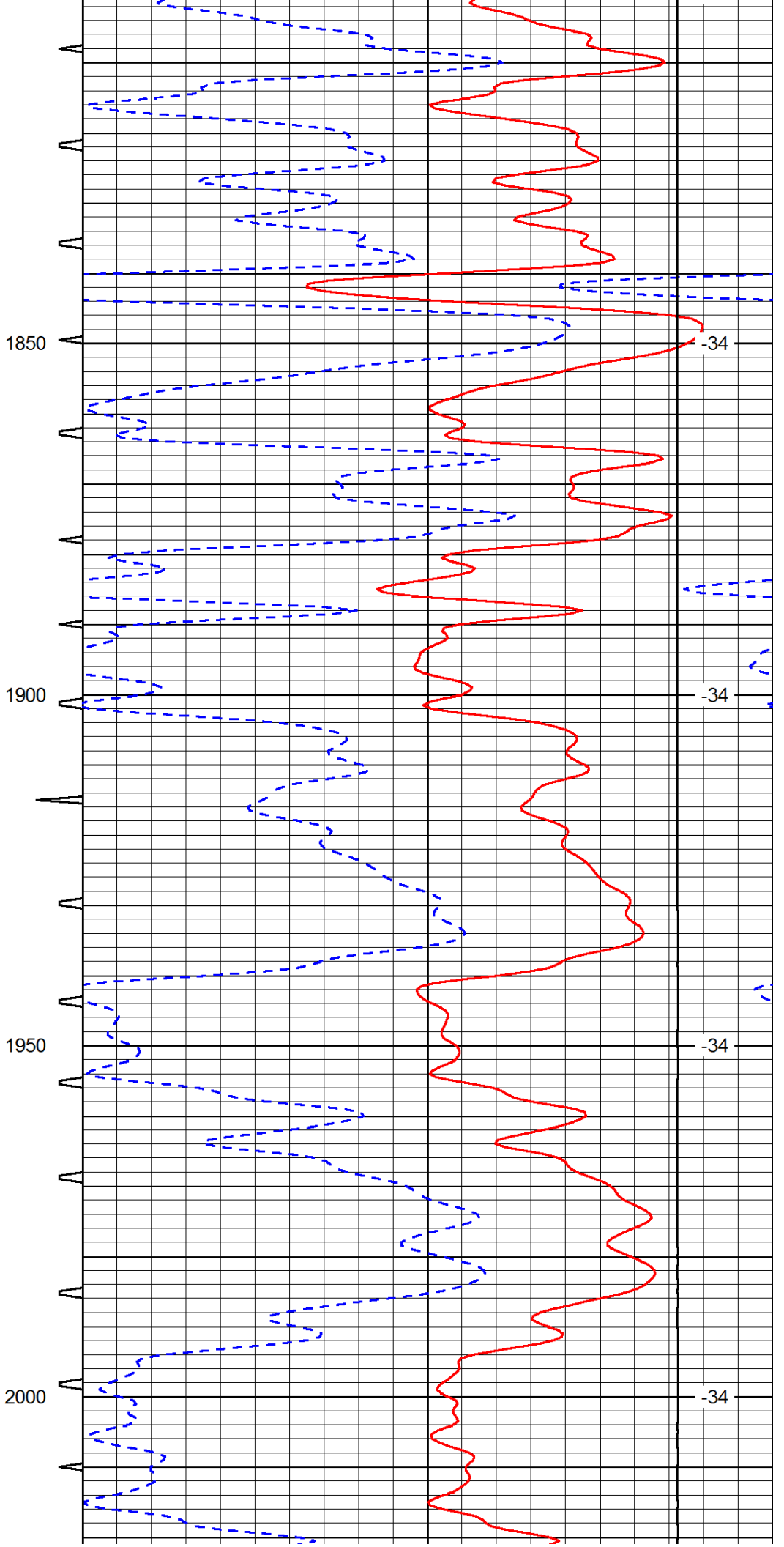
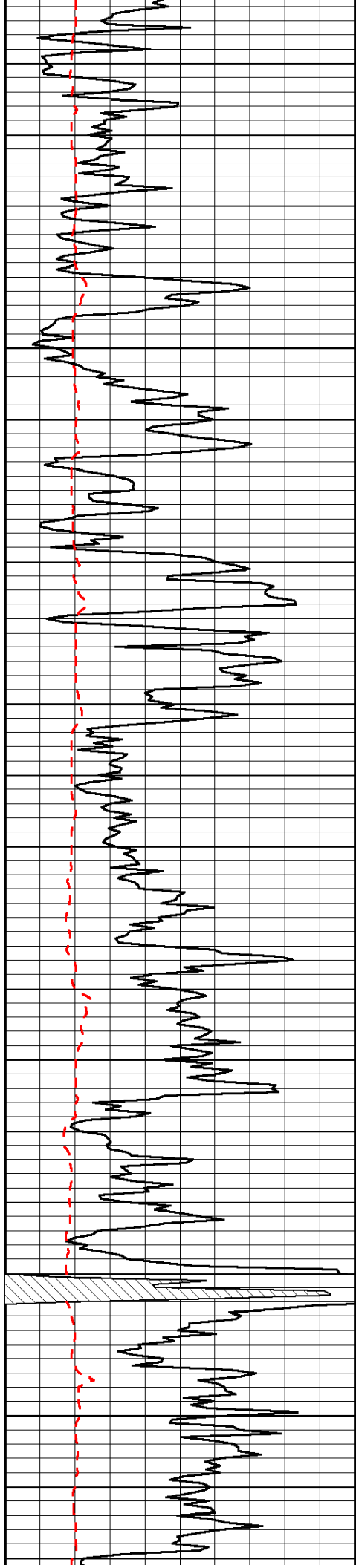
LSPD

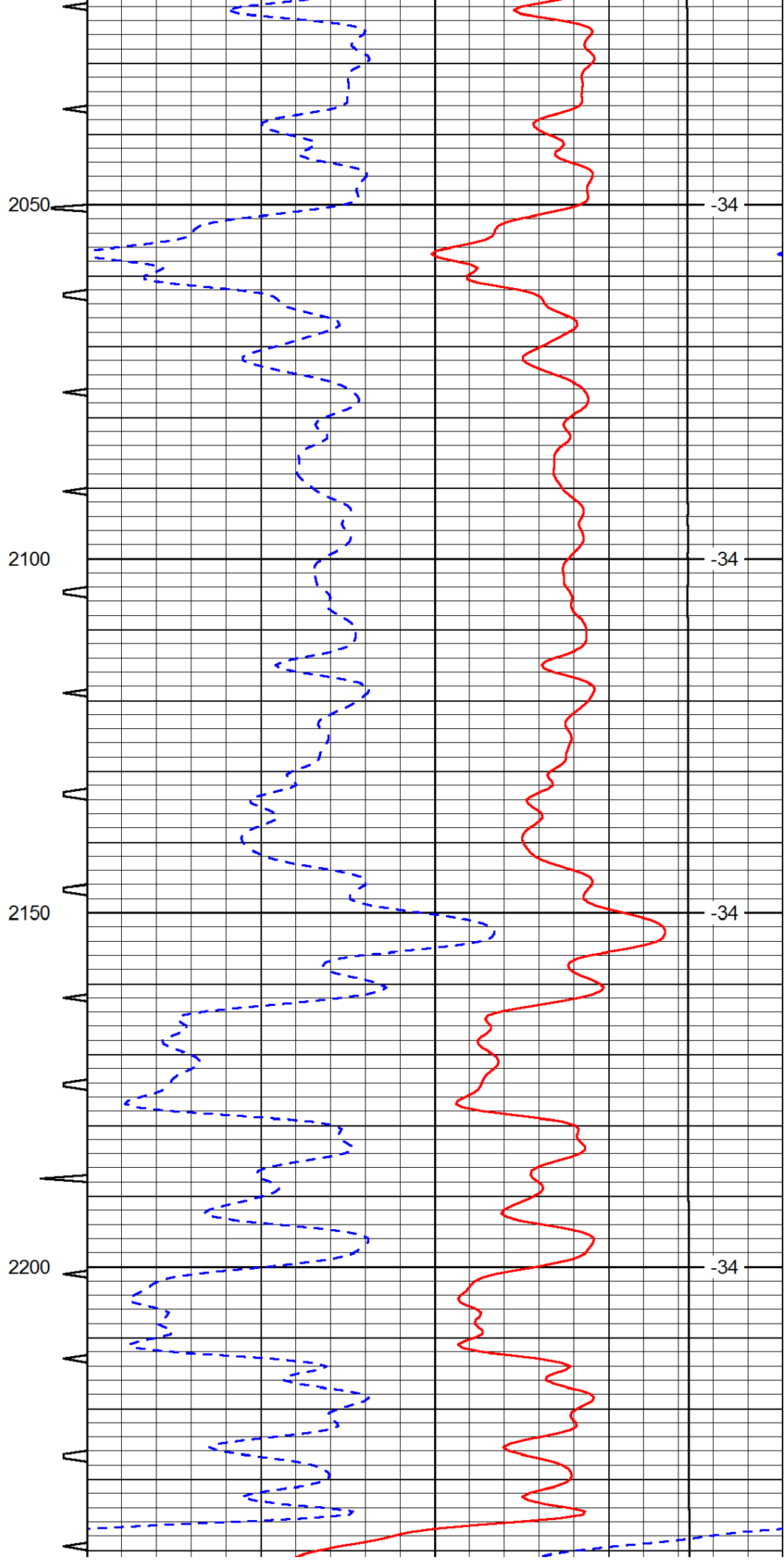
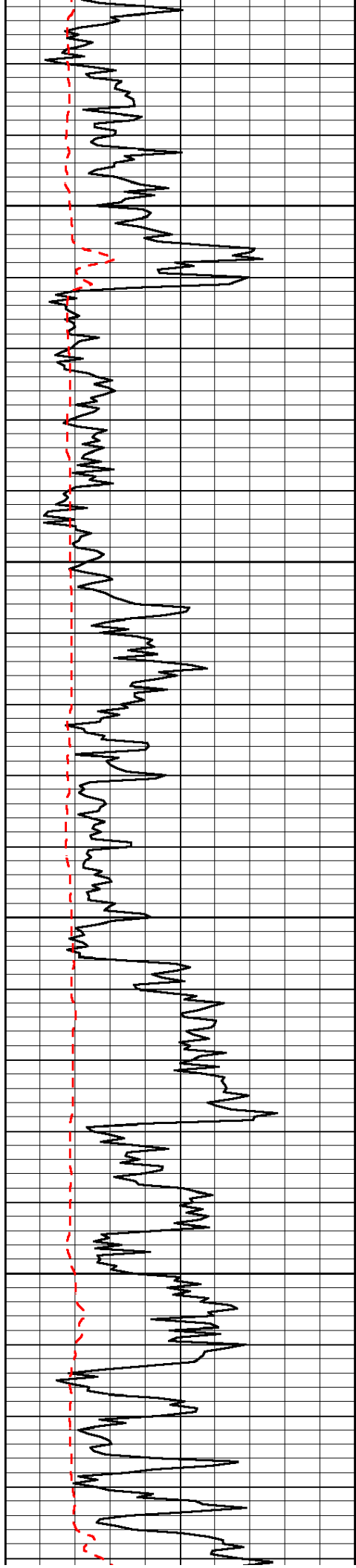


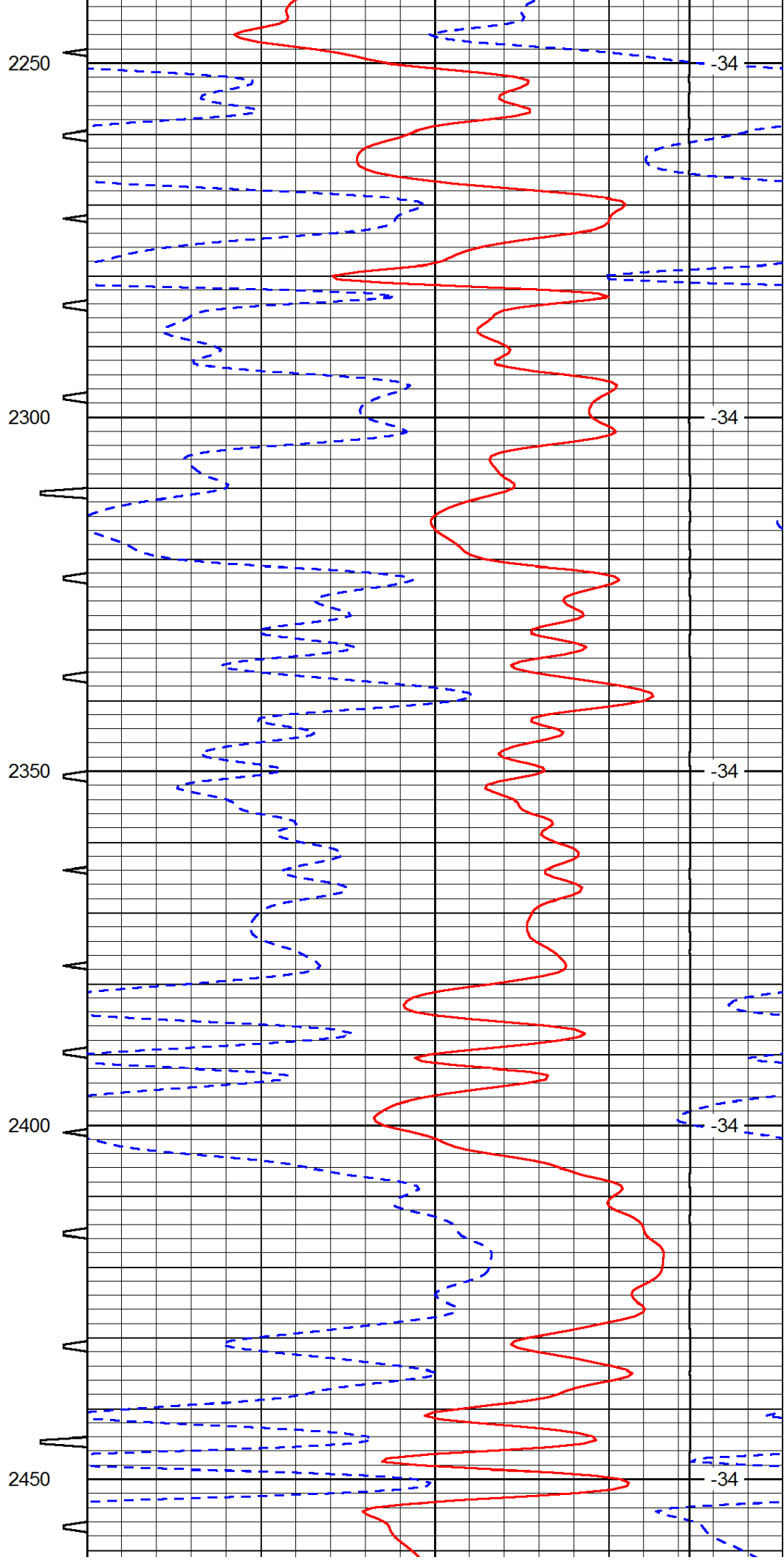
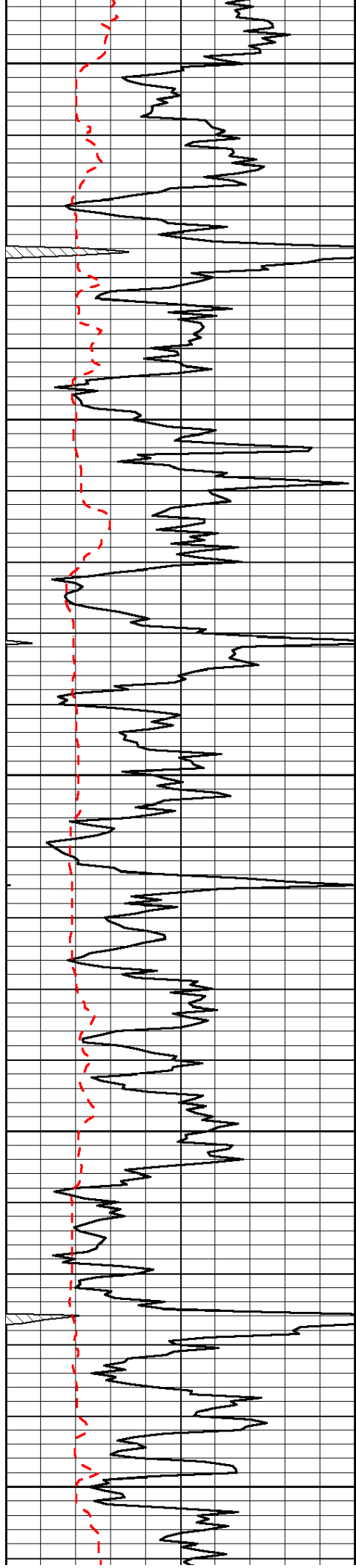




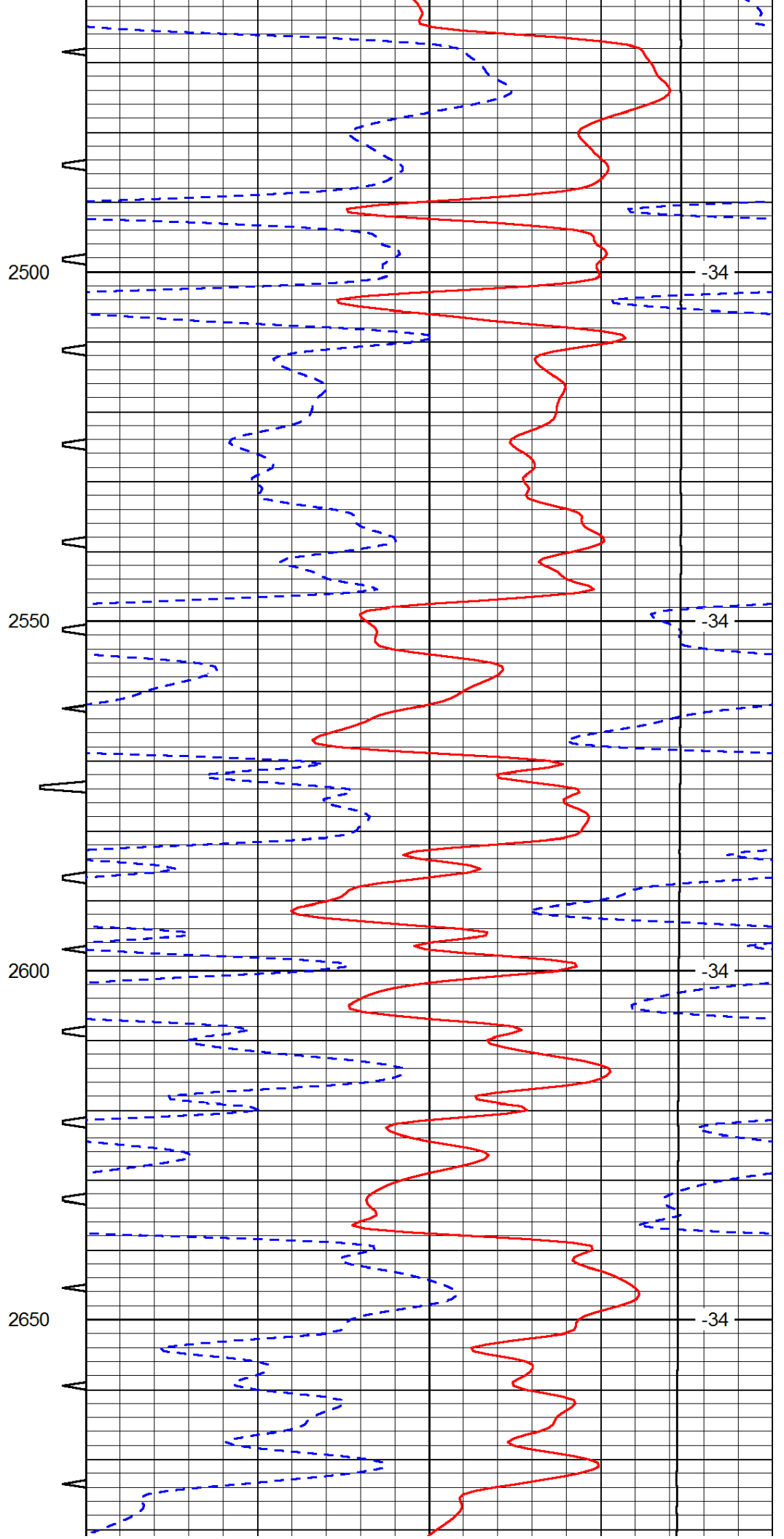
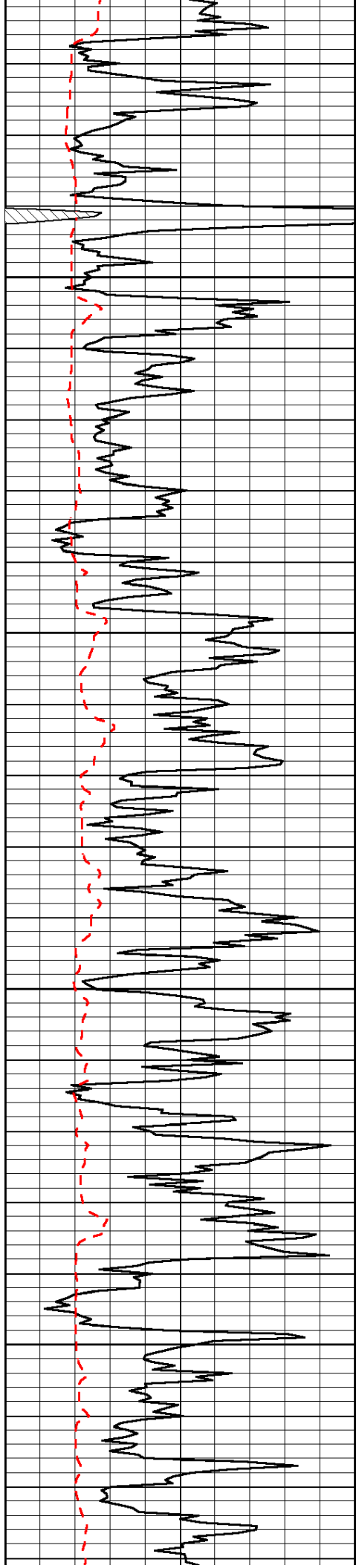


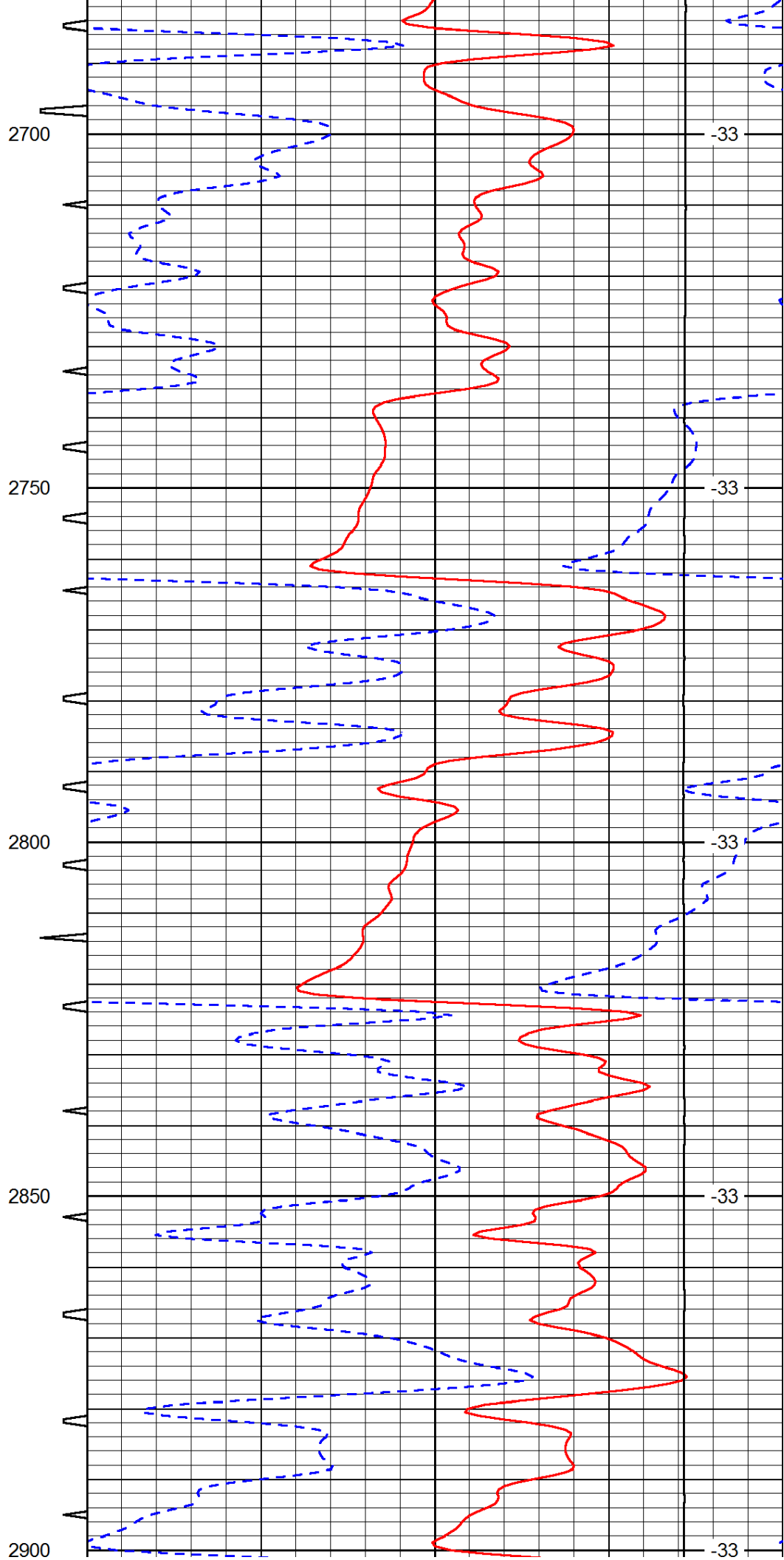
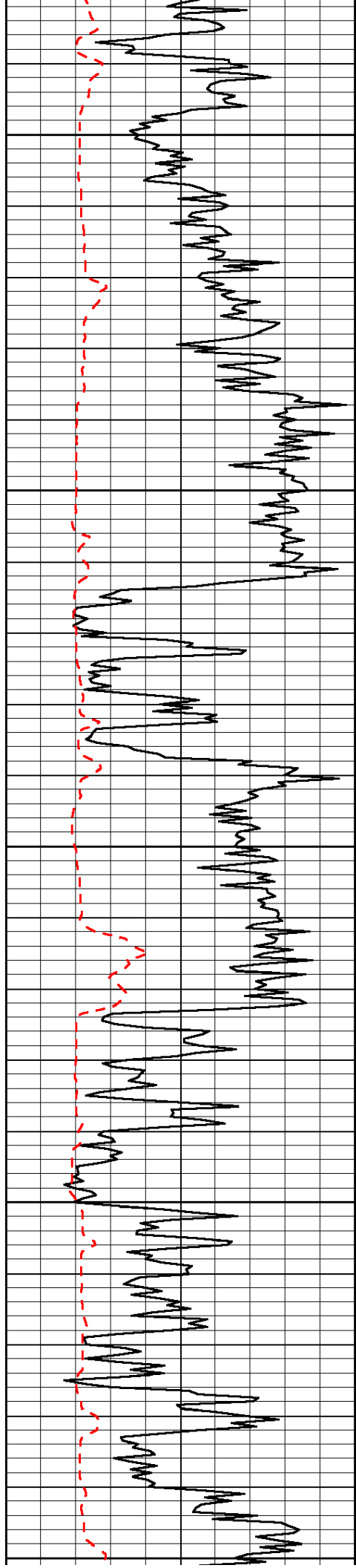


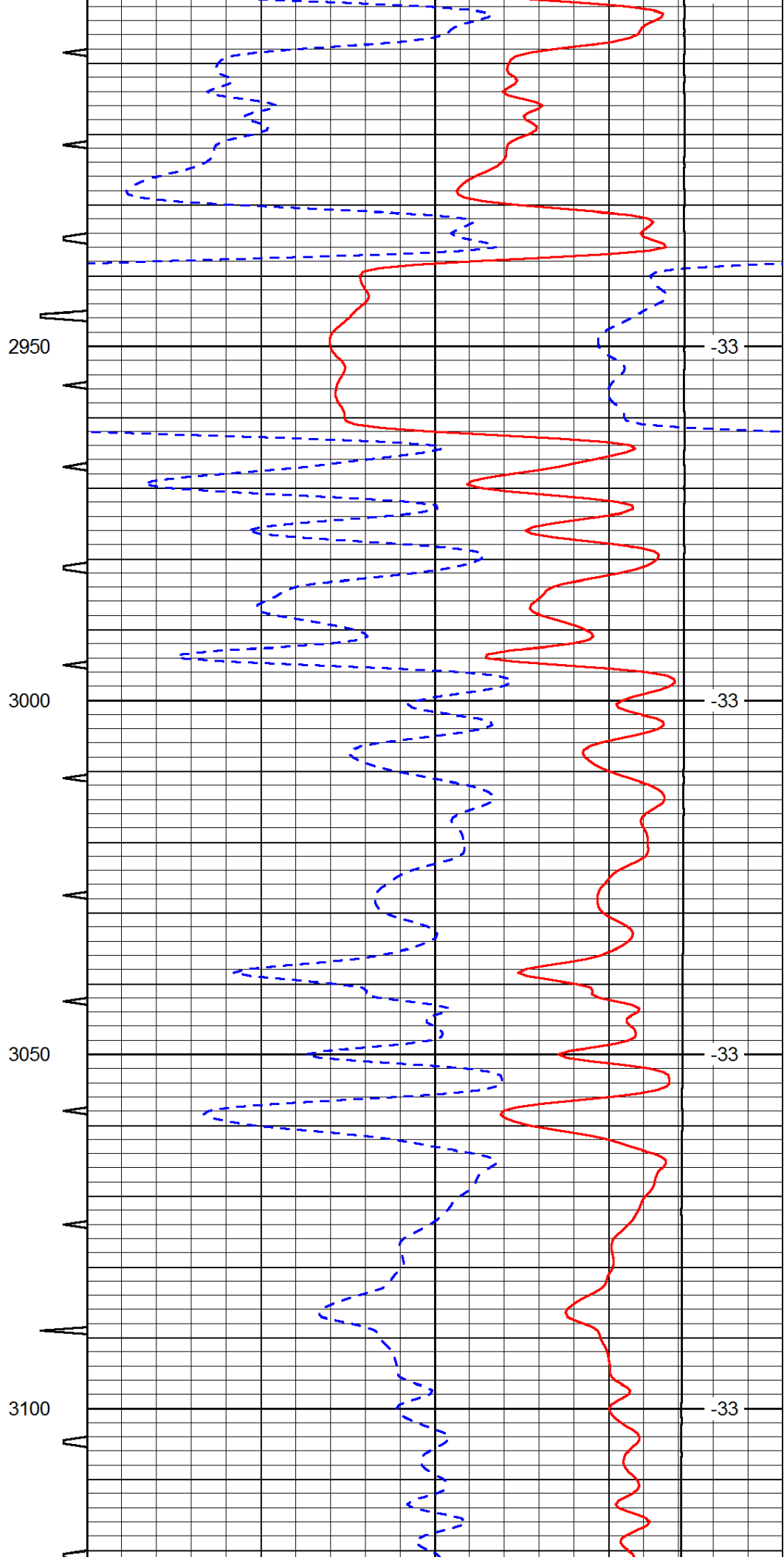
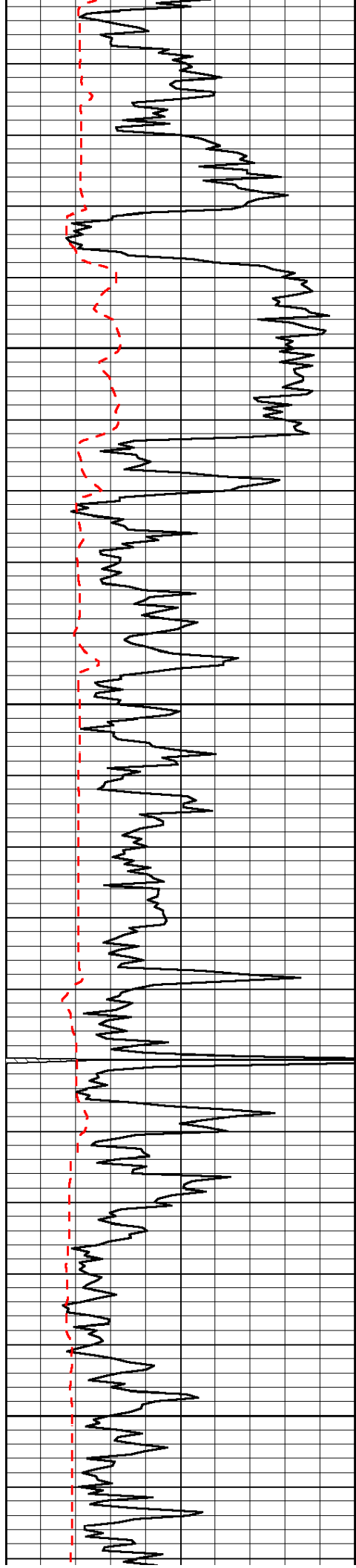


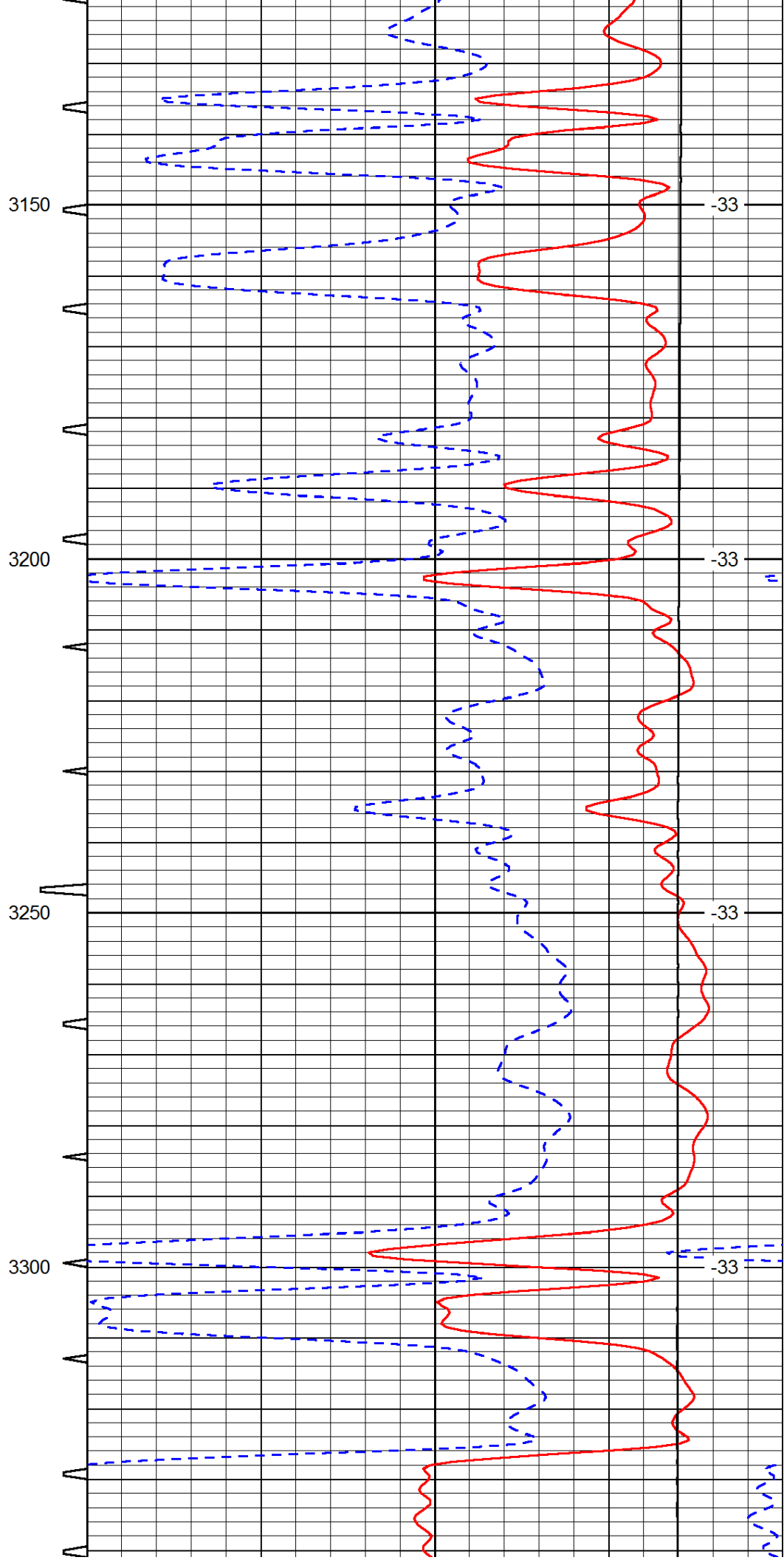
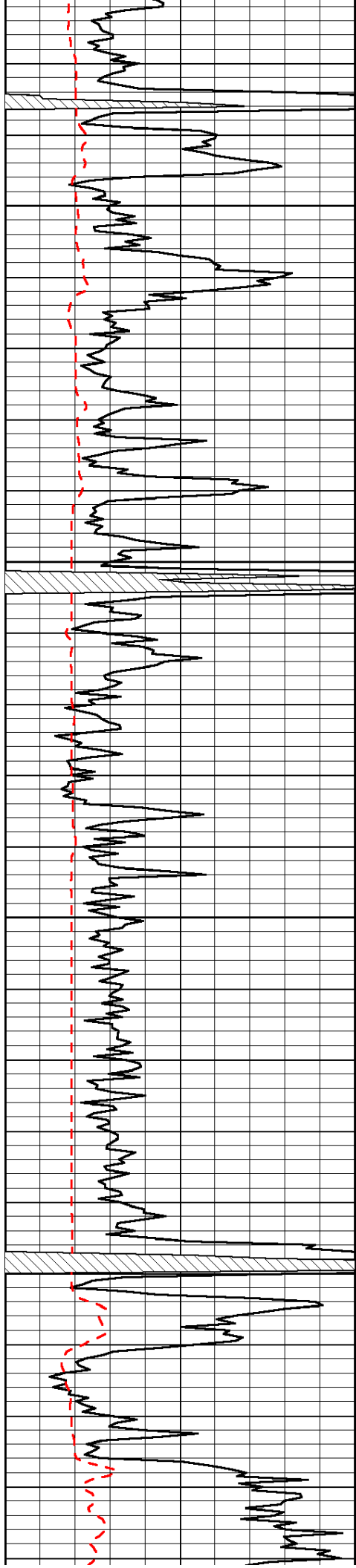


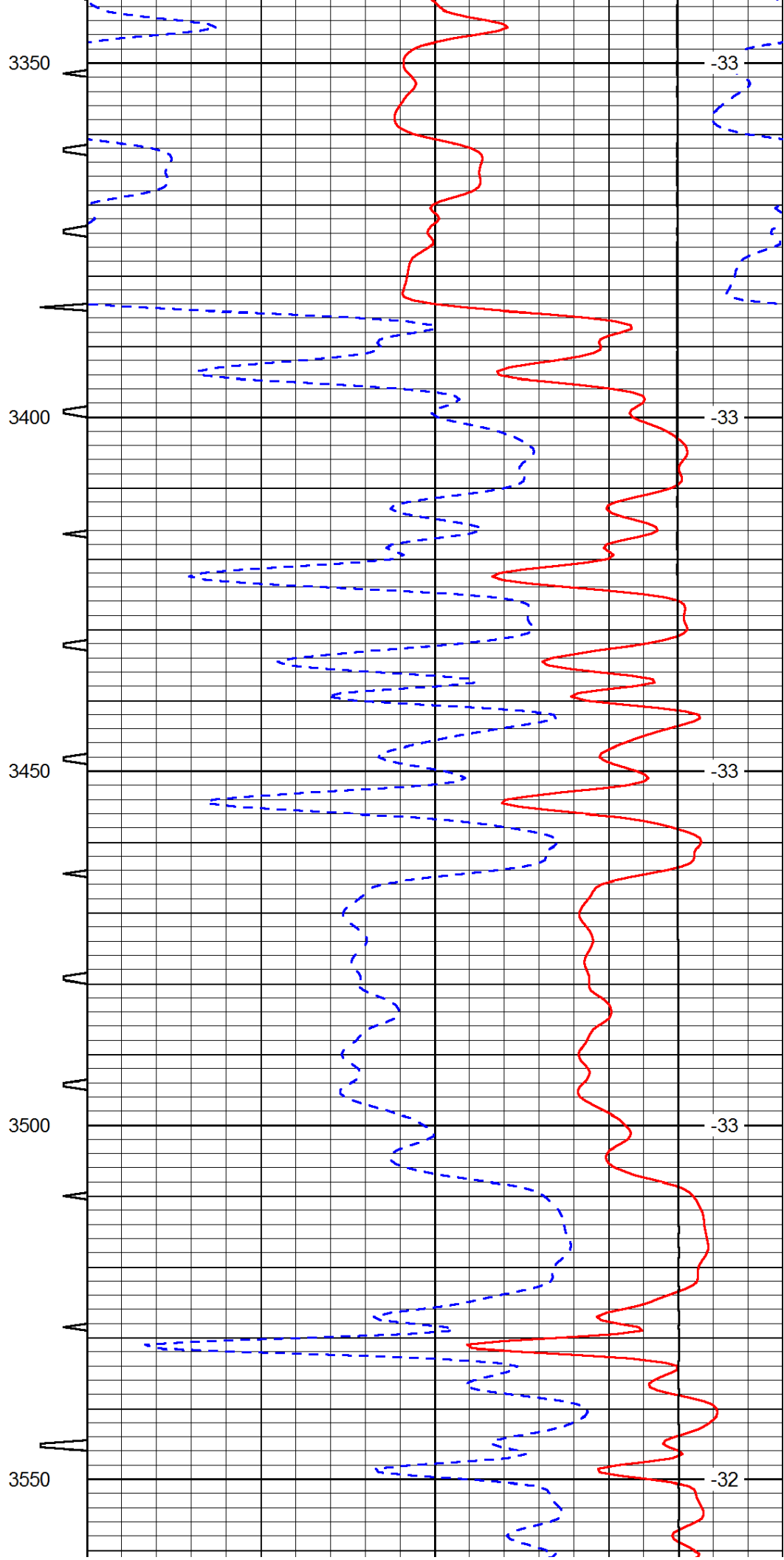
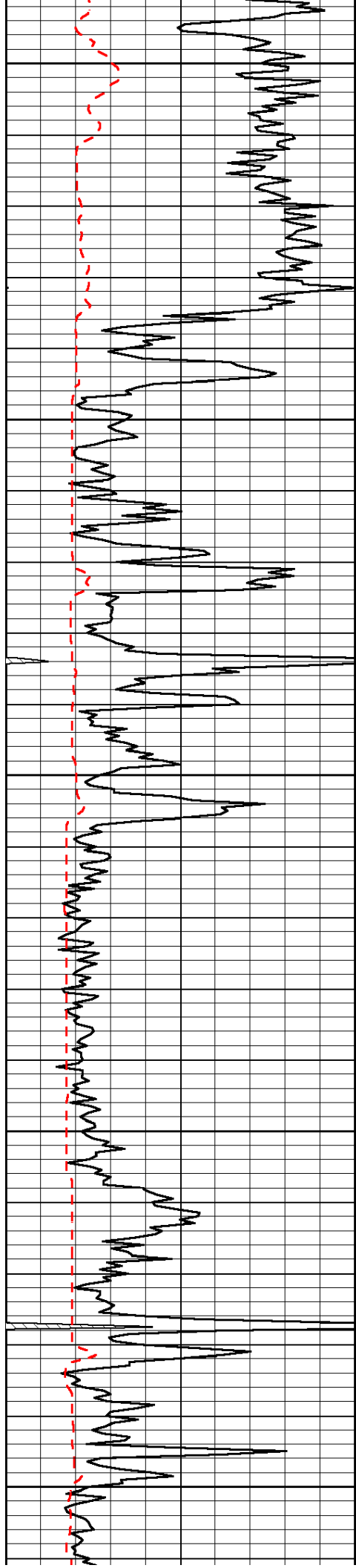


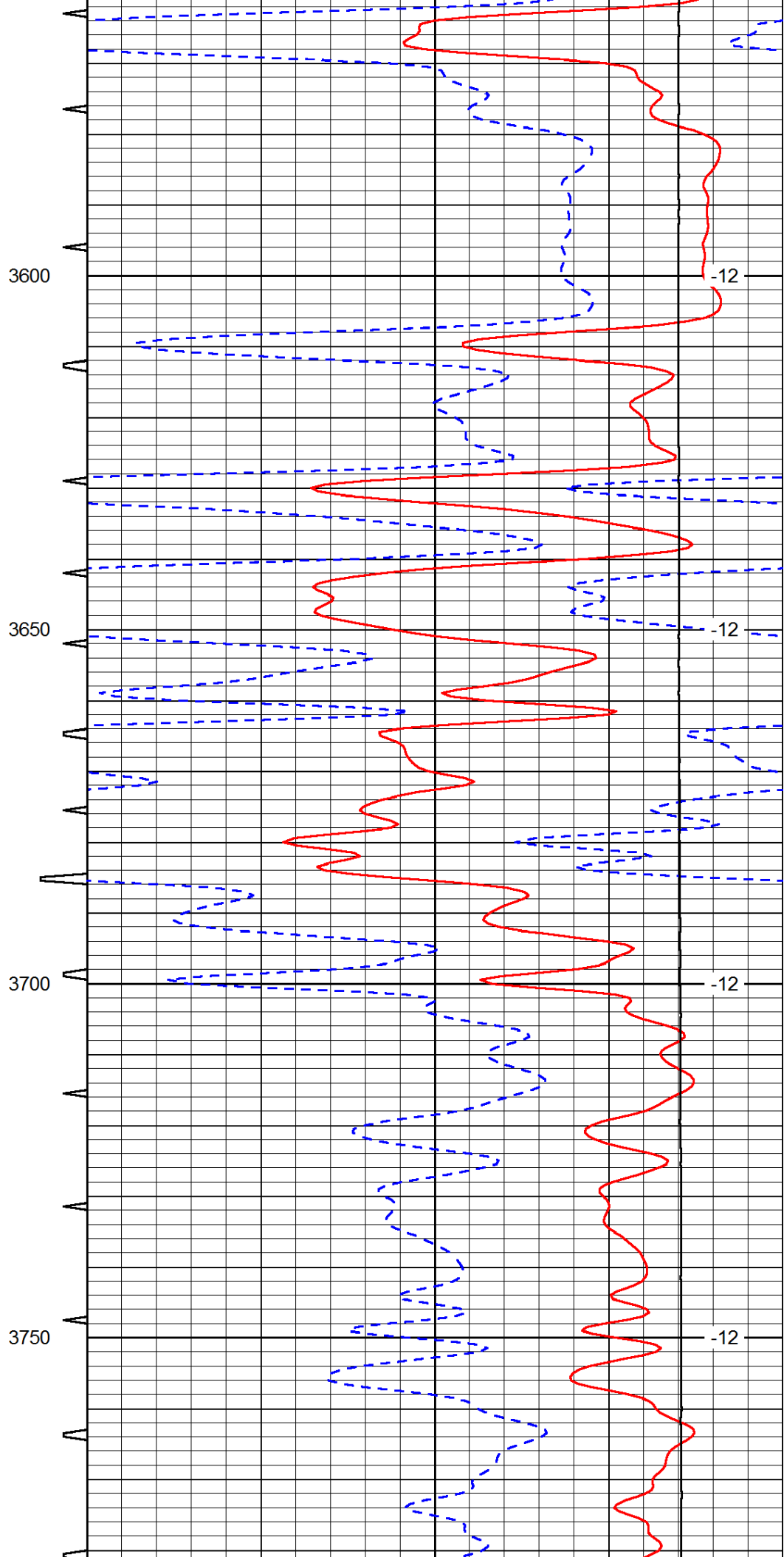
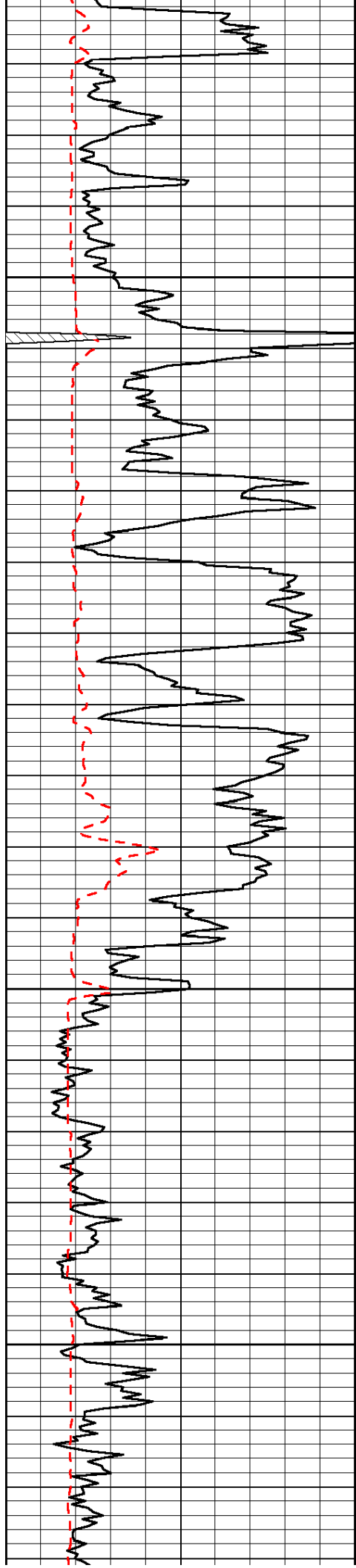


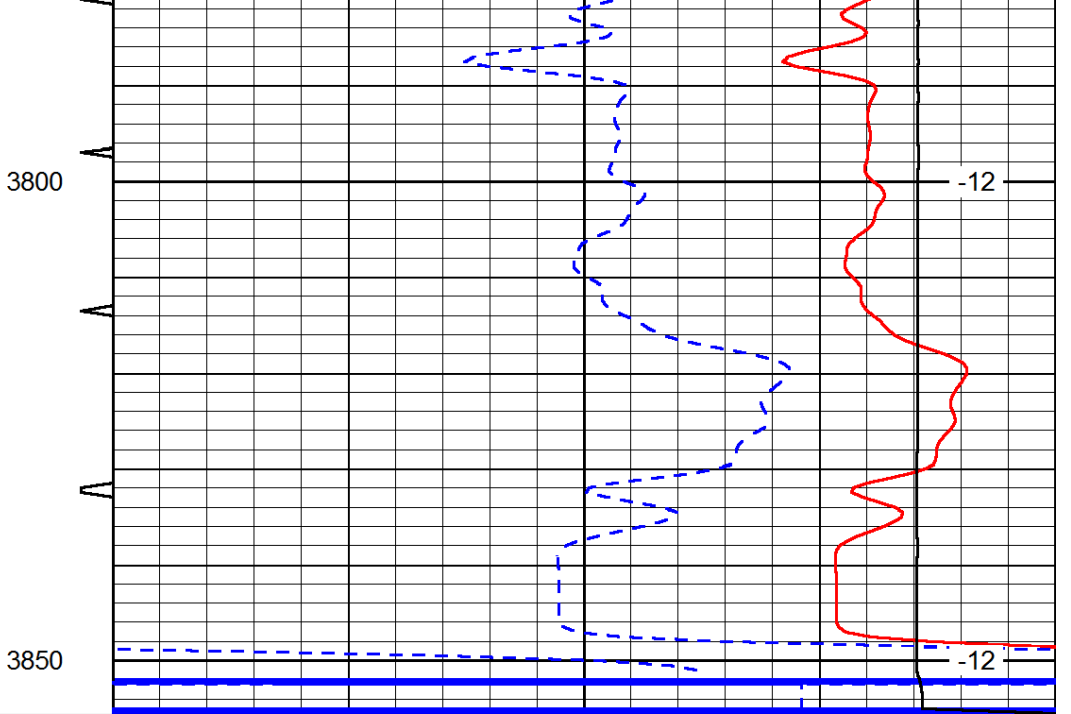
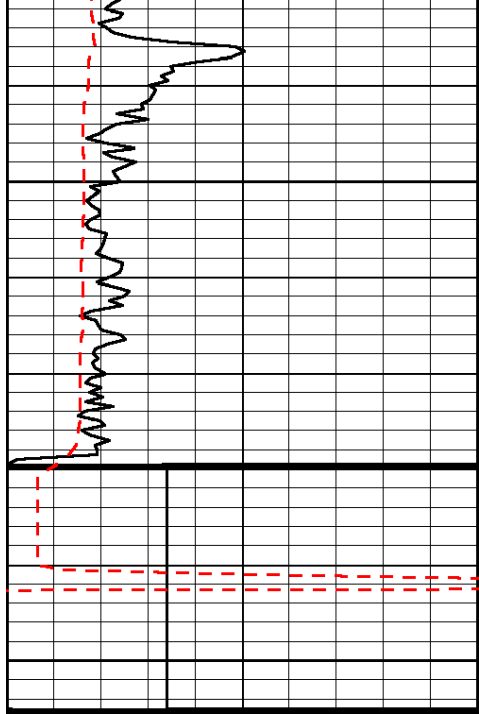












0	Gamma Ray	150
150	Gamma Ray	300
6	Caliper (GAPI)	16

Sonic Int	140	Delta Time (usec/ft)	40
5	0	SPOR	-10
	30	LTEN (lb)	0

LSPD